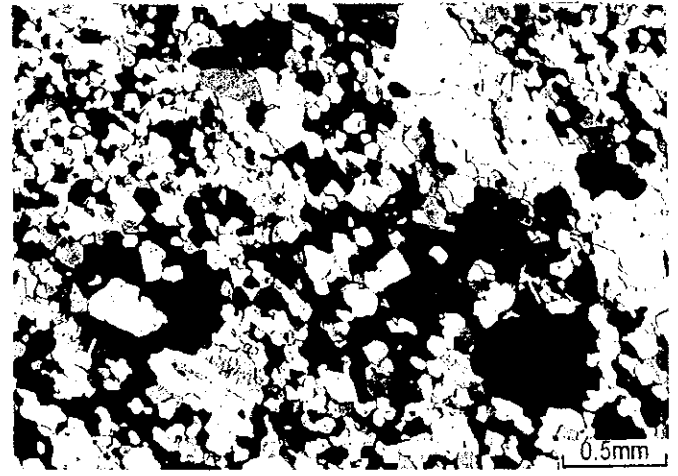
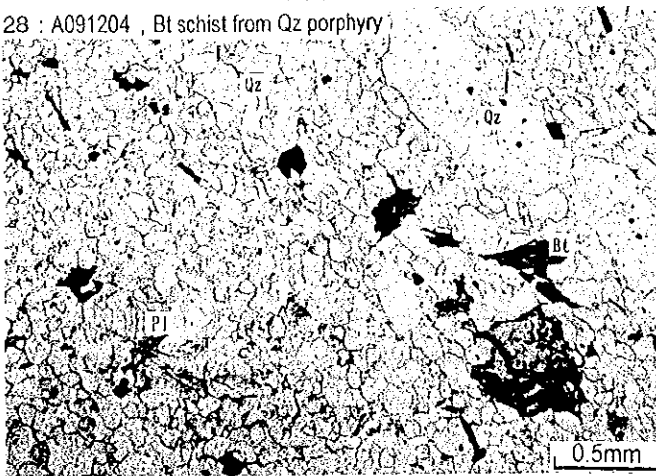


卷末資料 2 - 1 - 2 岩石薄片顯微鏡写真 (8/11)

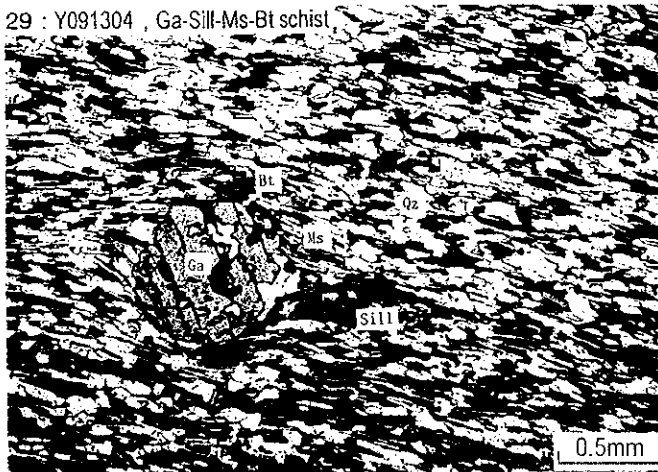
開放ニコル

直交ニコル

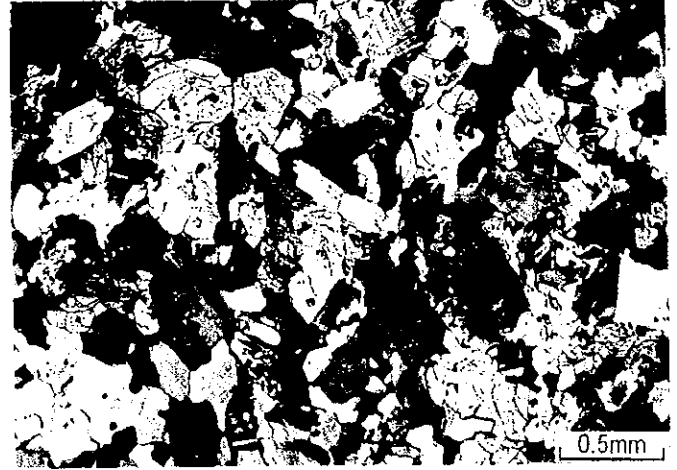
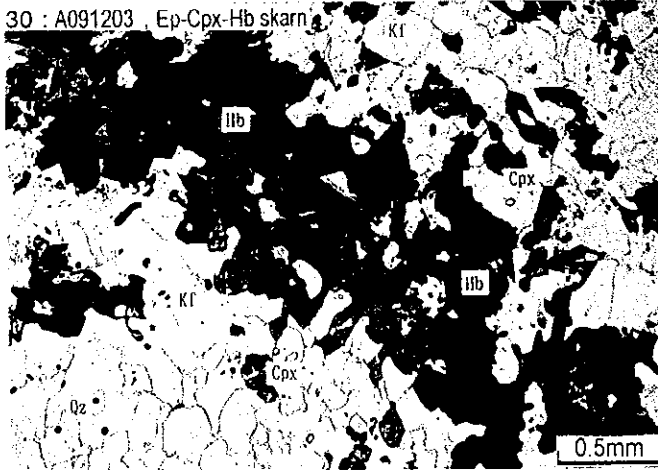
28 : A091204 , Bt schist from Qz porphyry



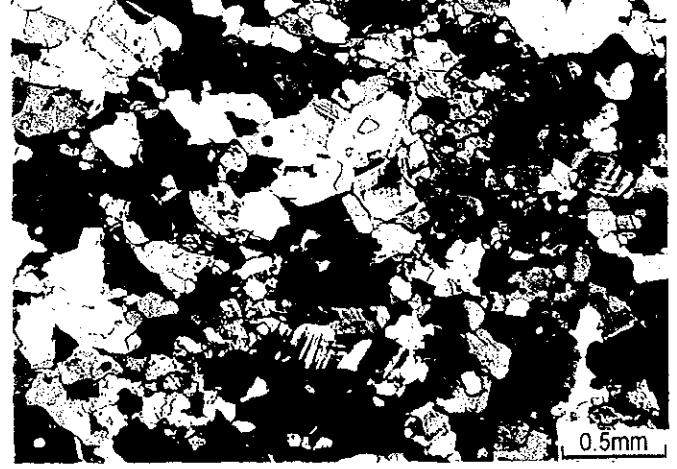
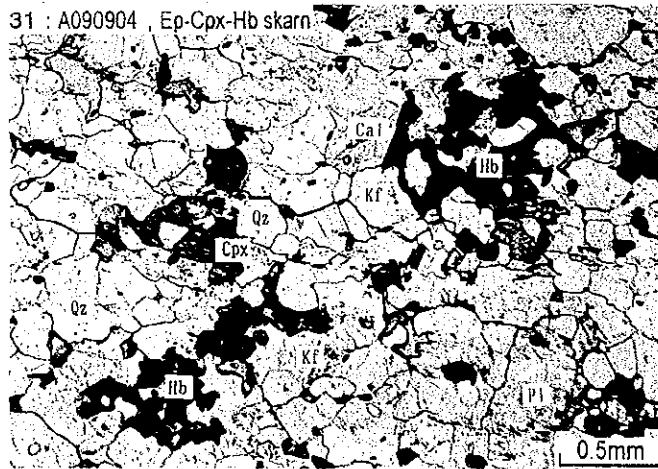
29 : Y091304 , Ga-Sill-Ms-Bt schist



30 : A091203 , Ep-Cpx-Hb skarn



31 : A090904 , Ep-Cpx-Hb skarn

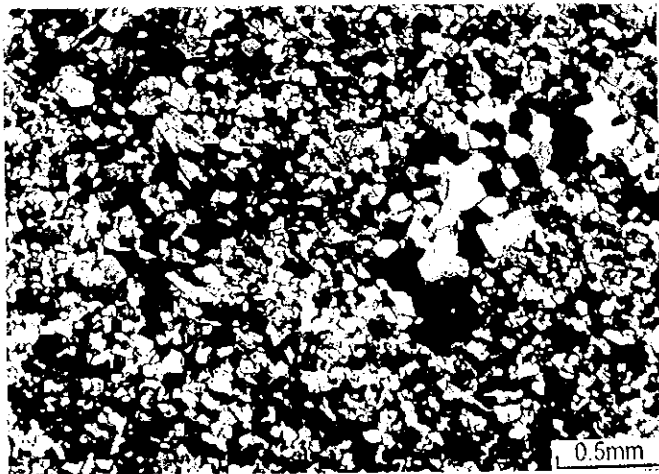
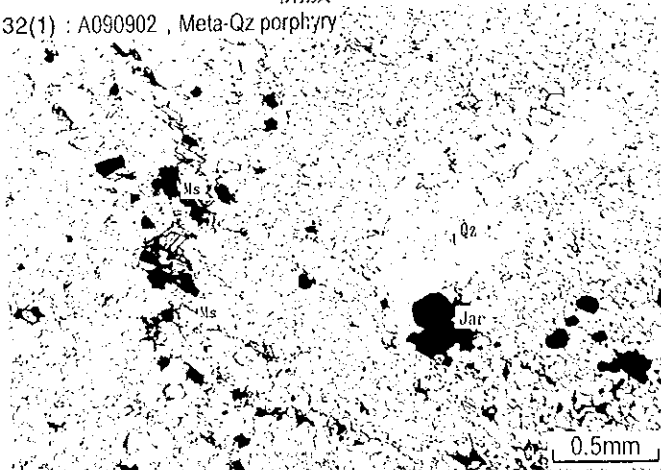


卷末資料 2 - 1 - 2 岩石薄片顯微鏡写真 (9/11)

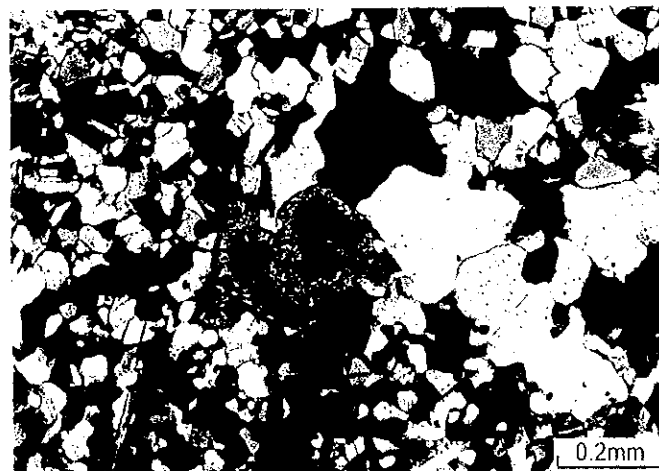
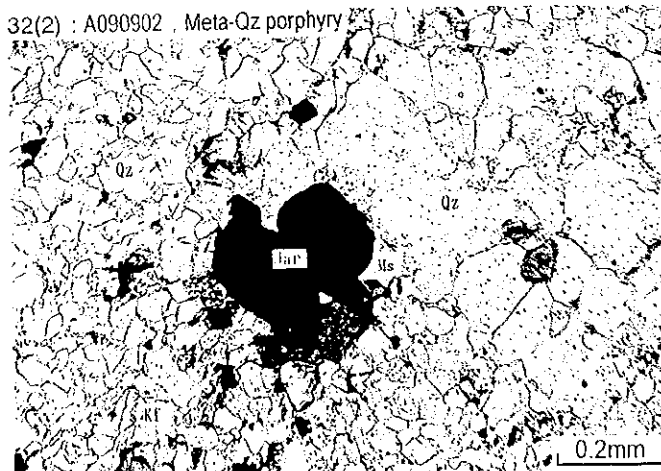
開放ニコル

直交ニコル

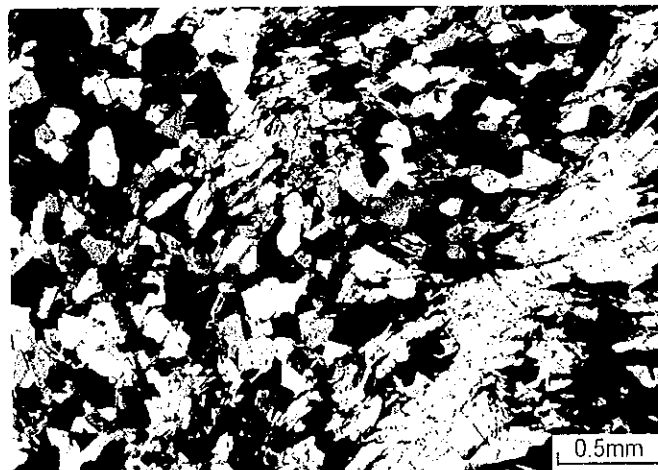
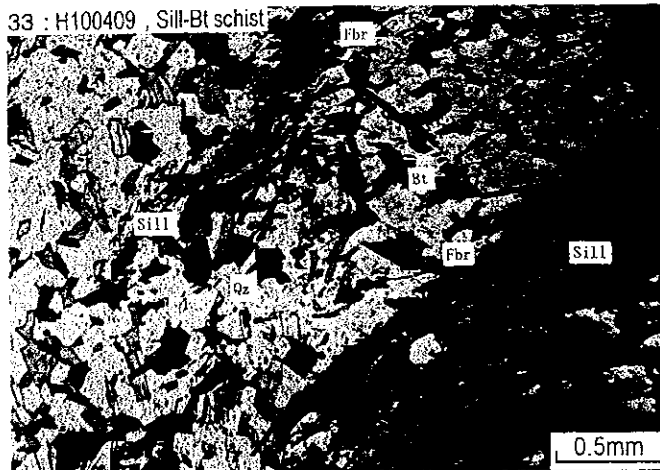
32(1) : A090902 , Meta-Qz porphyry



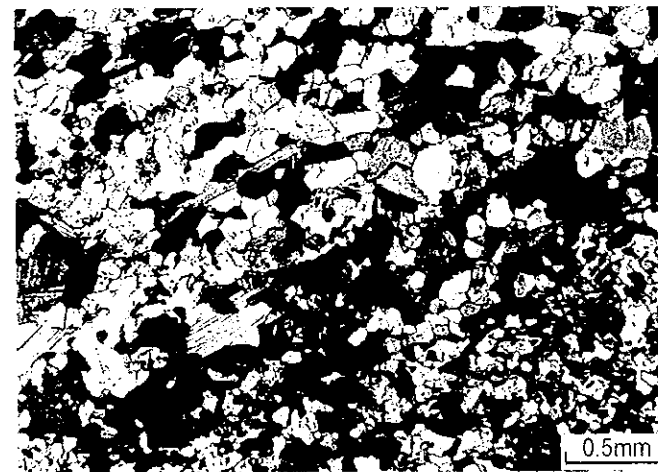
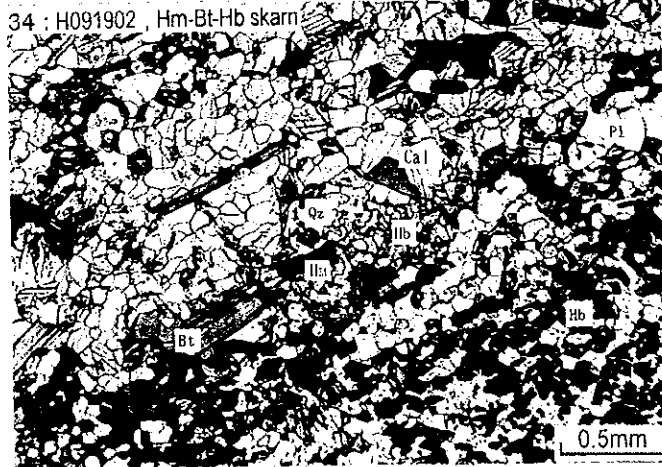
32(2) : A090902 , Meta-Qz porphyry



33 : H100409 , Sill-Bt schist



34 : H091902 , Hm-Bt-Hb skarn

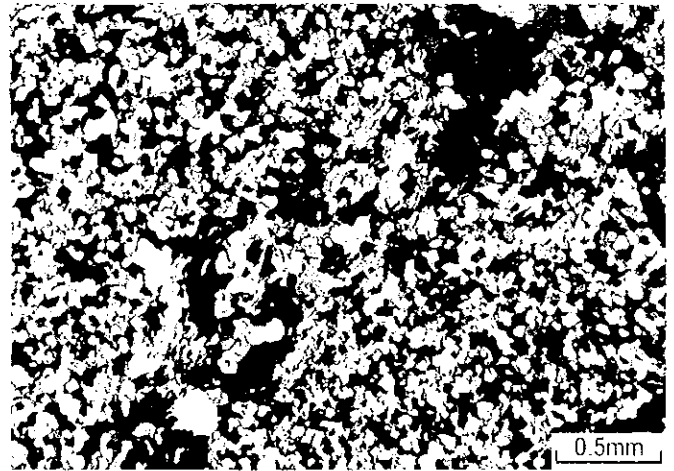
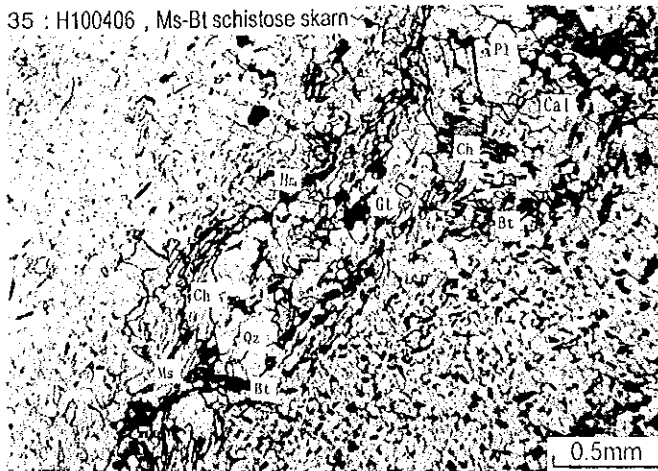


卷末資料 2 - 1 - 2 岩石薄片顯微鏡写真 (10/11)

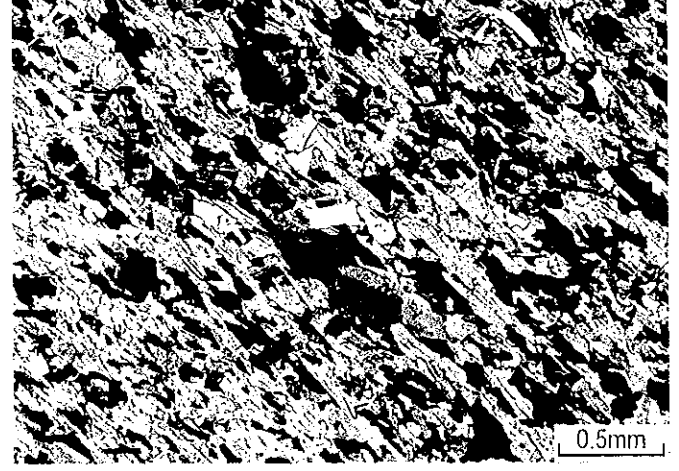
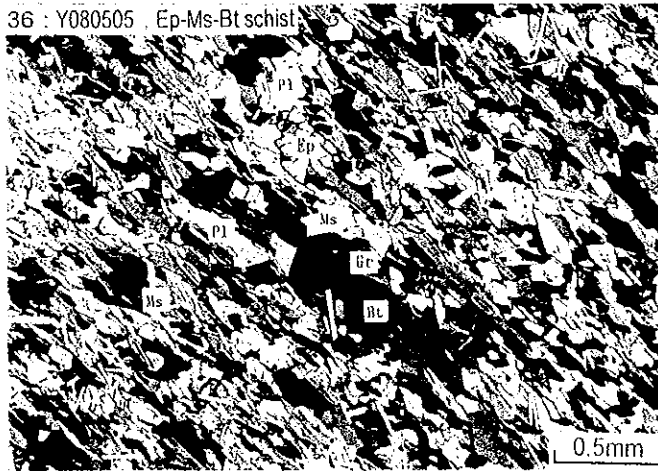
開放ニコル

直交ニコル

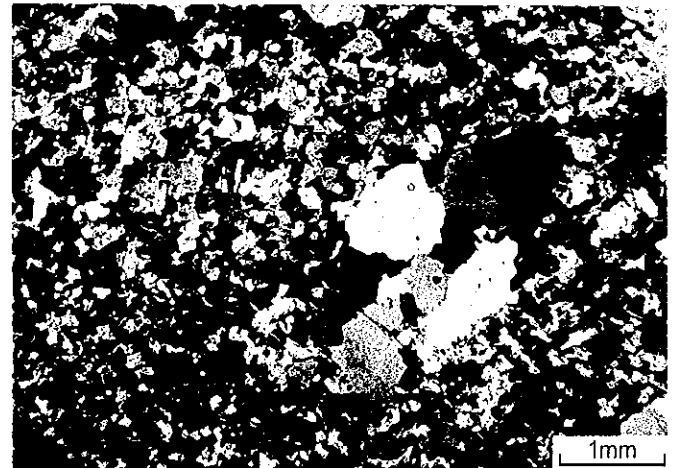
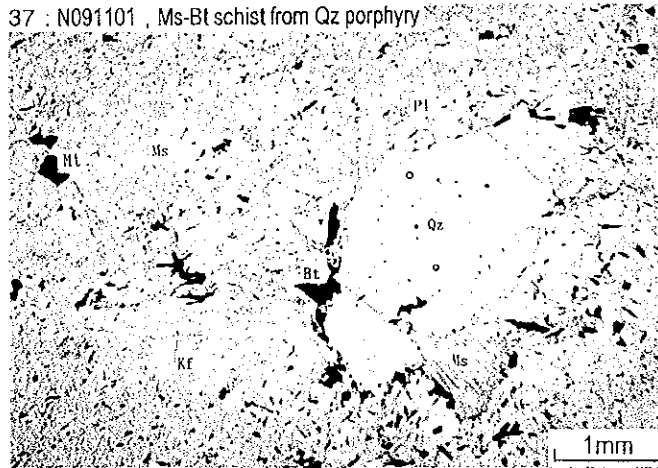
35 : H100406 , Ms-Bt schistose skarn



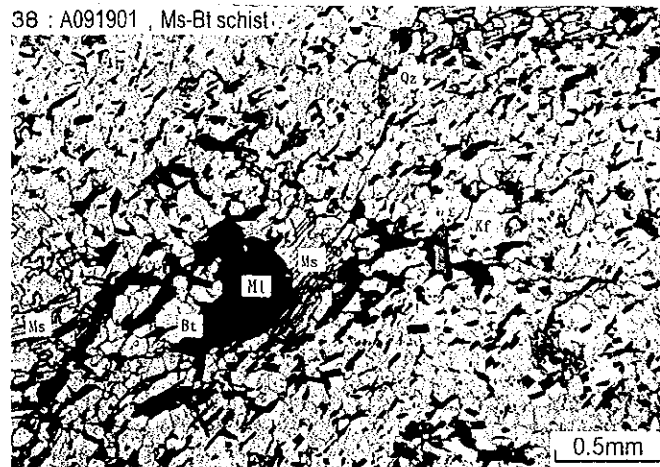
36 : Y080505 , Ep-Ms-Bt schist



37 : N091101 , Ms-Bt schist from Qz porphyry



38 : A091901 , Ms-Bt schist

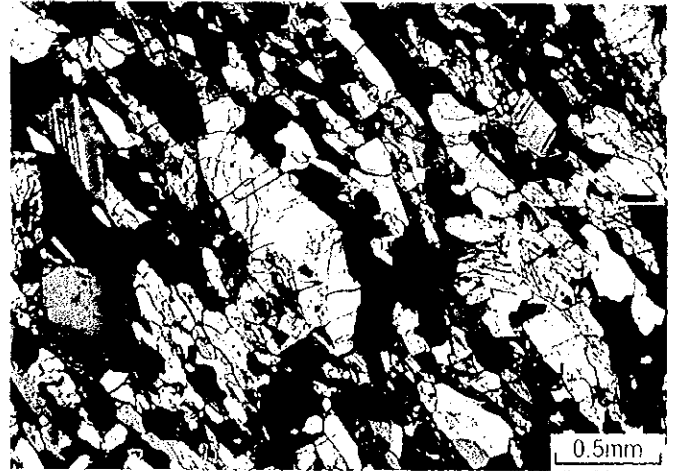
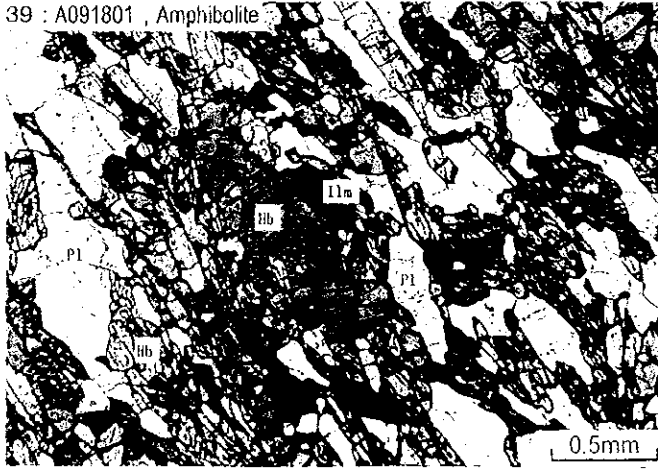


卷末資料 2 - 1 - 2 岩石薄片顕微鏡写真 (11/11)

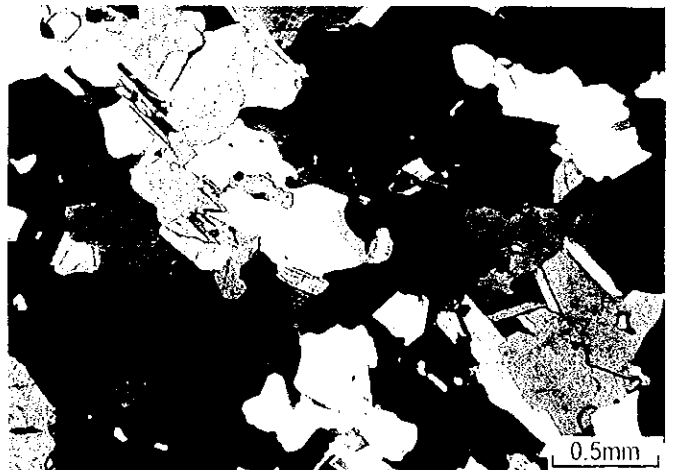
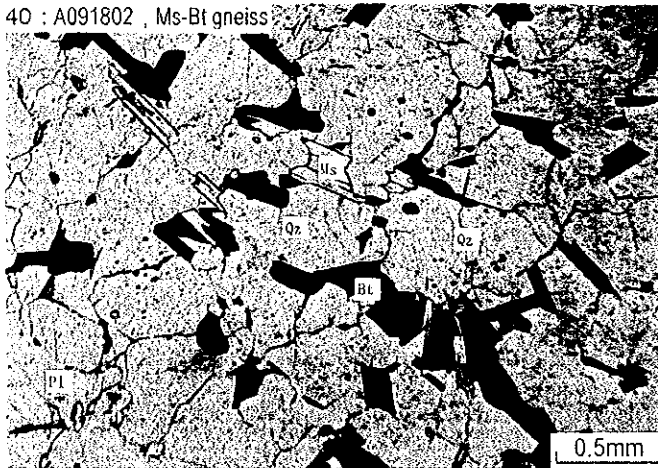
開放ニコル

直交ニコル

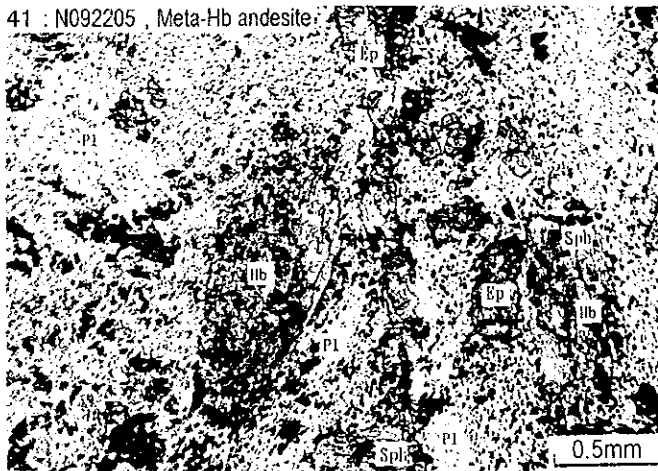
39 : A091801 , Amphibolite



40 : A091802 , Ms-Bt gneiss



41 : N092205 , Meta-Hb andesite



卷末付録 2 - 2 - 1 検鏡結果一覧表 (鉱石研磨薄片)

No.	Sample	Locality		Sample name	Ore minerals														Gangue minerals														Remarks	Labo. tests									
		District	Locality		El	Td	Cp	Cc	Sp	Gn	Py	Pn	Asp	Po	Mt	Hm	Chr	Bt	Gal	Cpx	Pl	Qz	Bt	Ms	Chl	Cal	Sd	Hb	Act	Sph	Ep	Goe			Trm	Stn							
1	N092605	Ashele	Duolanasayi	Qz-diorite, a few Py					△																																	Au 0.2ppm, Ag 0.12ppm, Fe 1.62%	XA
2	N092505	Ashele	Ashele	Py-Cp-Sp banded ore	△	○		○	△	◎				○																										Au 0.41ppm, Ag 80.5ppm, Cu 7.3%, Pb 1.29%, Zn 6.56%, Fe 35.6%	A		
3	N092804	NE of Habane	Saidu	Qz-diorite with Qz vein						○																														Ap, Au 0.92ppm, Ag 0.21ppm, Fe 1.09%	FA		
4	H081202	Altay	Wulasigou	Ep-Chl-Act rock																																				Au 0.34ppm, Fe 17.6%	A		
5	A082102	Altay	Hongling	Qz-Mt-Bt-Ga lens, w=50cm																																				Ap	XR		
6	H082104	Altay	W of Qiaxia	Bt-Qz schist, gry, mdg, Cp			△																																	Au 0.21ppm, Cu 0.32%, Fe 6.52%	FA		
7	A081201	Altay	Qiaxia	Cp-Qz rock, w=15cm, l=1.5m			△																																	Cu 1.46%, Fe 39.05%	A		
8	A081203	Altay	Qiaxia	Cp-Mt-Act skarn, d-grn, csg																																				Zr, Ap	X		
9	A081501	Altay	NE of Sarekuobu	Act-Chl-Ga schist, d-grn, fng																																				F			
10	N081701	Altay	Sarekuobu	Mt-Qz vein																																				XR			
11	N082203	Altay	Sarekuobu	El-Mt-Ga-Act vein ore																																				A			
12	N082206	Altay	Sarekuobu	El-Mt-Qz vein ore																																				A			
13	H081605	Altay	Tiemerte	Py-Mt-Qt banded ore, shaft waste			○		△		○																														A		
14	H081608	Altay	Tiemerte	Ga-Chl-Mt schist, gm																																				A			
15	N081704	Altay	Tiemerte	Cp-Mt-Py ore, Sp-Gn			○		○	◎																														A			
16	H090803	Maizi	Monku	Act-Chl-Qz schist, Py																																				A			
17	N090701	Maizi	Monku	Mt ore																																				A			
18	A090702	Maizi	B-5 anomaly	Mt-Qz carbonate skarn, w=1m																																				A			
19	A090802	Maizi	B-5 anomaly	Ga-Cpx skarn, gossan, w=6m																																				X			
20	N090807	Maizi	Akeharen	Gn ore																																				A			
21	H090707	Maizi	Central part	Qz-Pl rock, w=50cm																																				A			
22	N091011	Maizi	Keketale	Ga-Act-Bt skarn, Py			△																																	A			
23	N091002	Maizi	Keketale	Cu-Pb-Zn ore, Po, Sp, Ga			△		△																															A			
24	N091007	Maizi	Keketale	Ga-Bt-Pl-Qz rock																																				A			
25	A091707	Maizi	88-15 anomaly	Bi-Hb-Qz rock, fng, blk			○			○																														A			
26	A091902	Maizi	88-15 anomaly	Mt-Ga-Qz lens, w=1.9m																																				A			
27	N092302	W of Fuyun	Saerbulake	Mineralized muddy phyllite						○																														A			
28	Y080312	SE of Fuyun	Kalatongke	Cu-Ni ore in Hb gabbro			○																																	A			
29	N091908	SW of Fuyun	Qiaxiahala	Cp-Mt ore in Ga skarn			○		△																															A			
30	N091902	SW of Fuyun	Qiaxiahala	Cp-Mt ore in Ep skarn			△																																	A			
31	N092111	SW of Fuyun	Suoerkuduke	Cp disseminated Chl-albite rock																																				A			

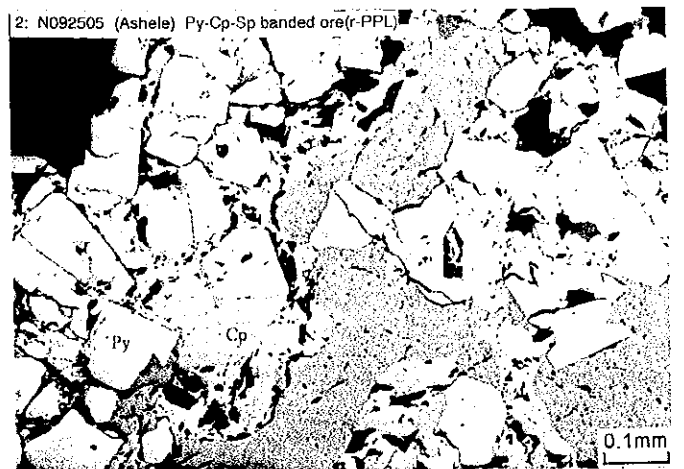
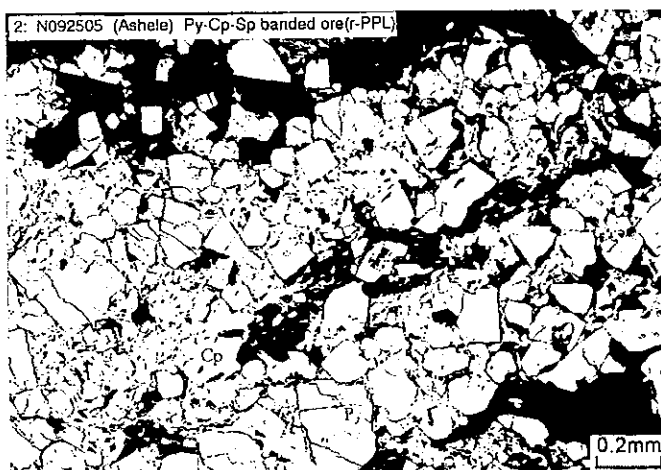
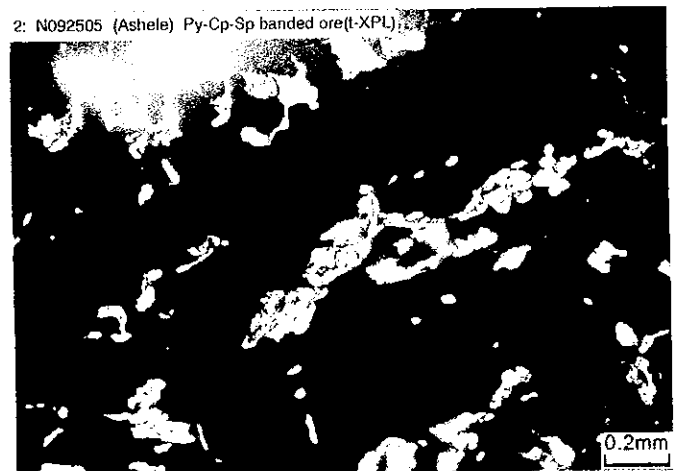
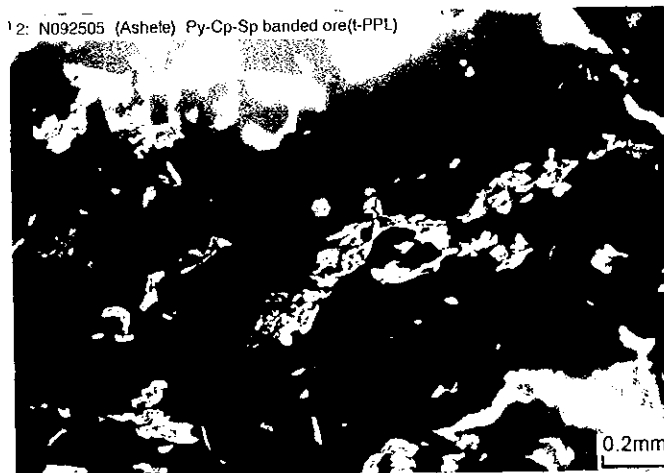
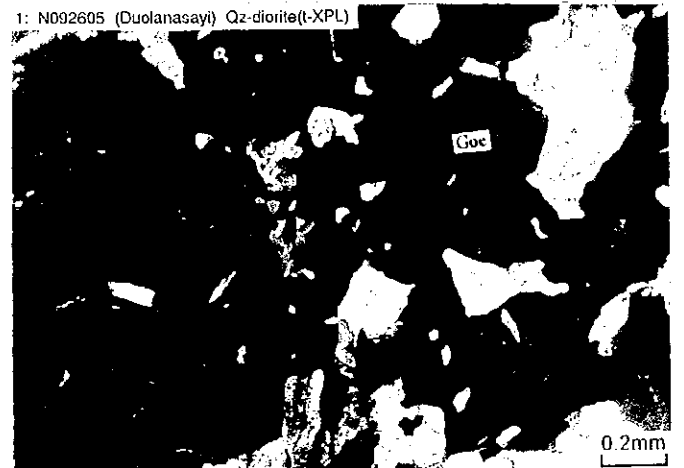
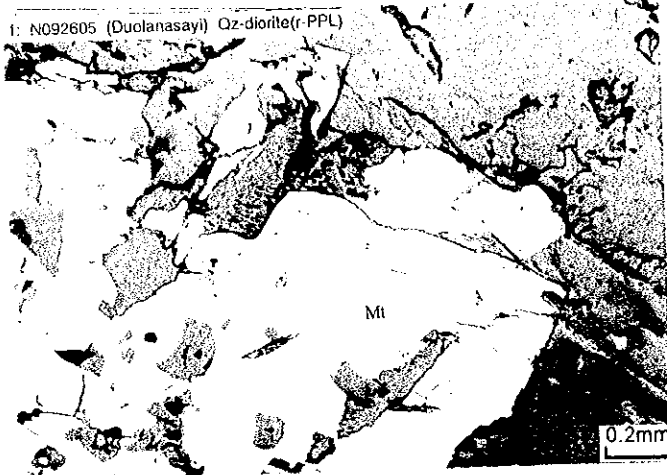
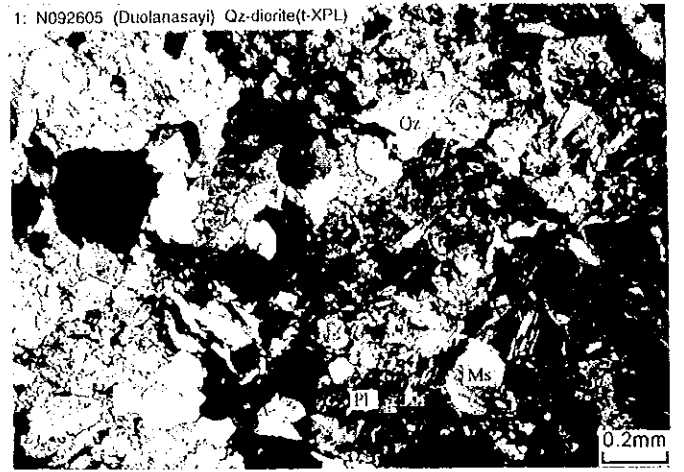
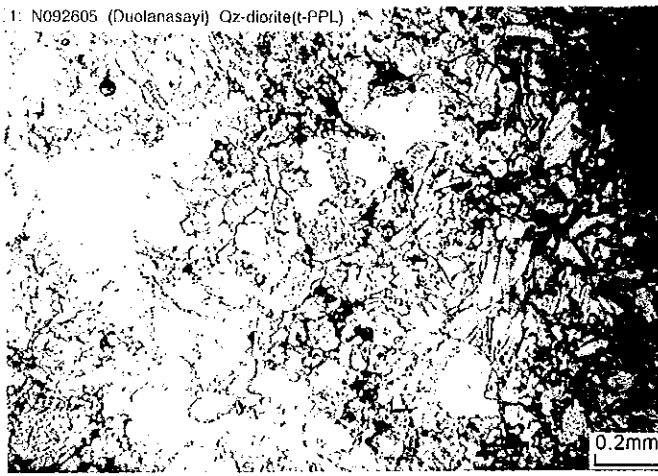
(35)

[Abundance]

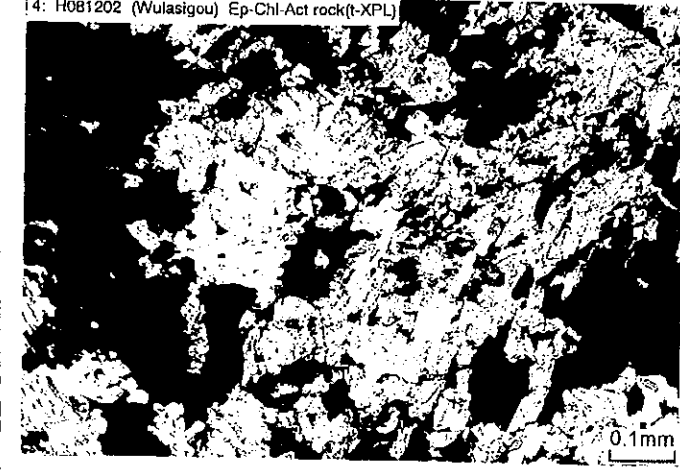
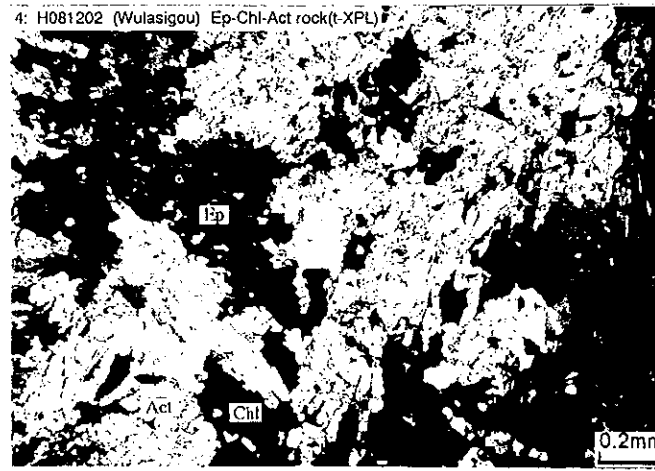
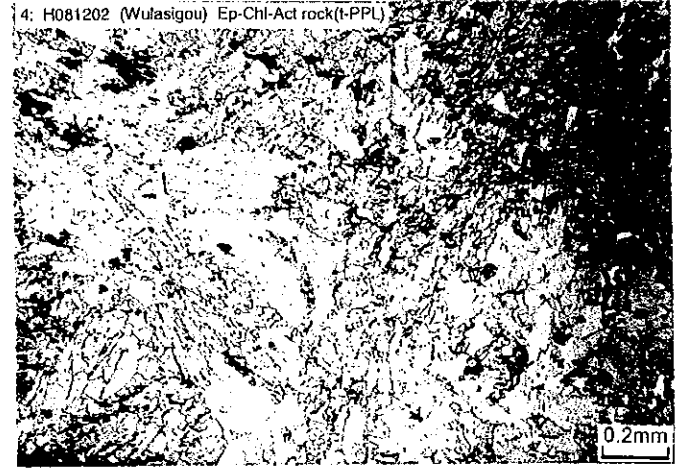
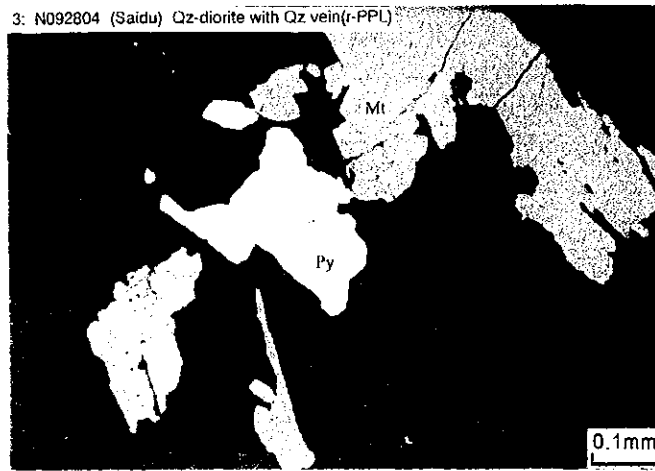
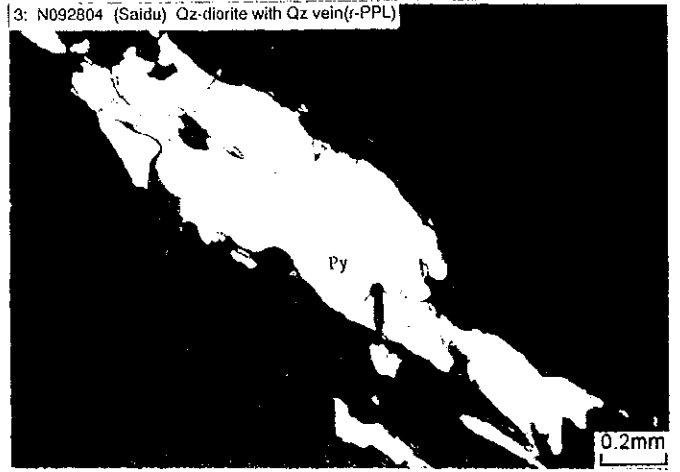
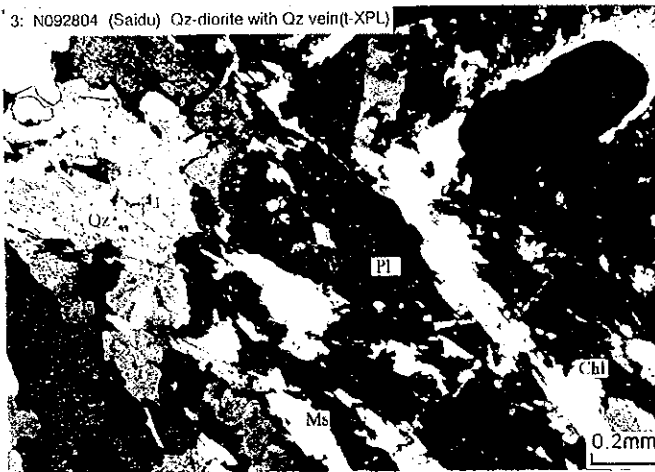
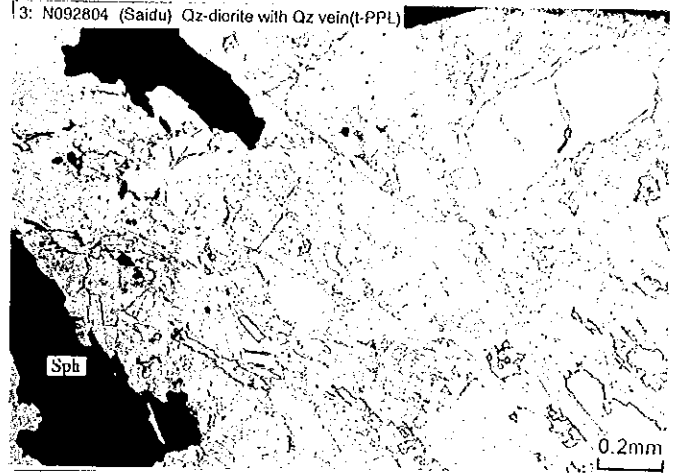
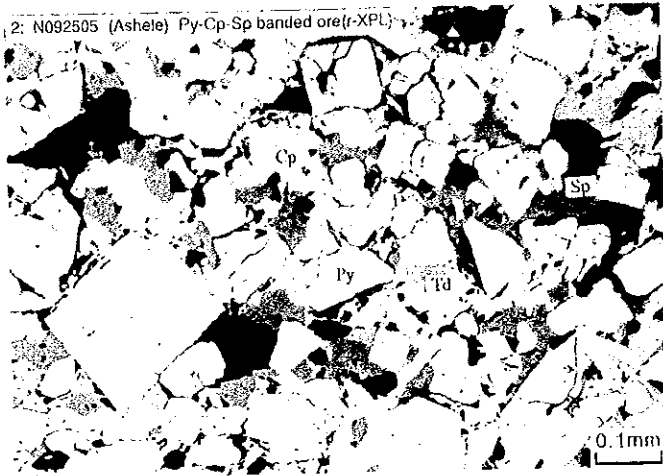
◎ : Abundant, ○ : Common, △ : Poor, · : Rare

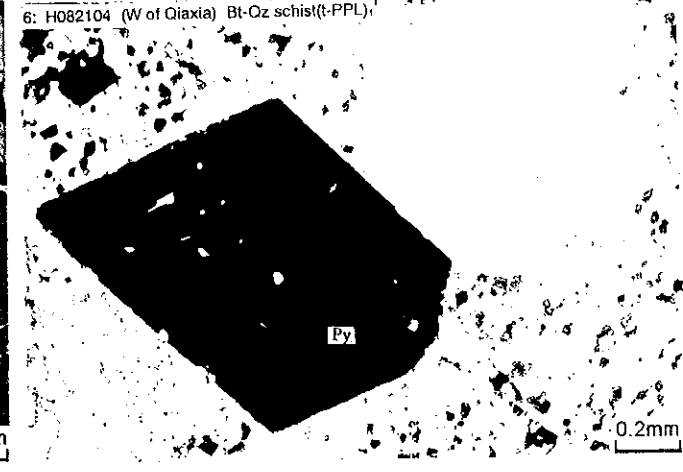
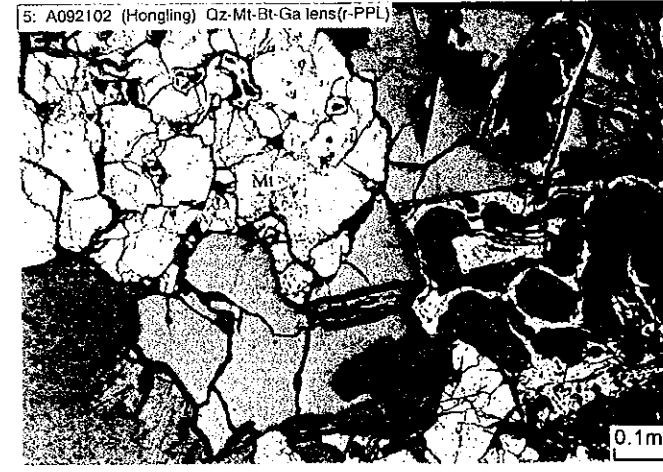
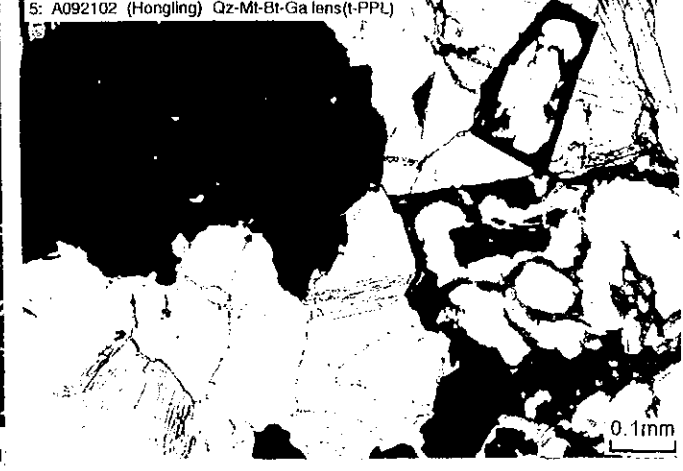
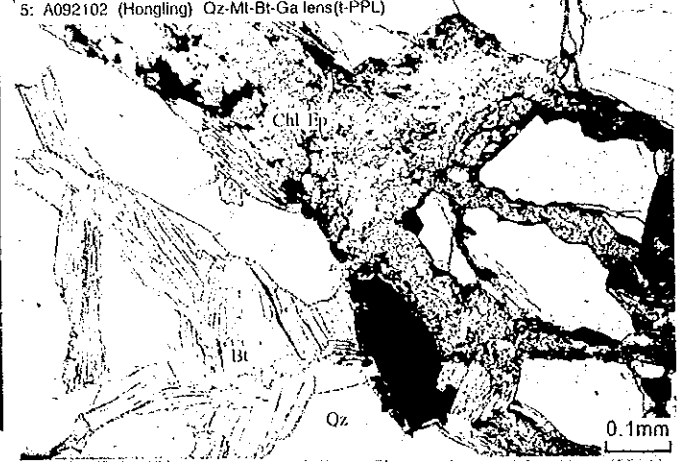
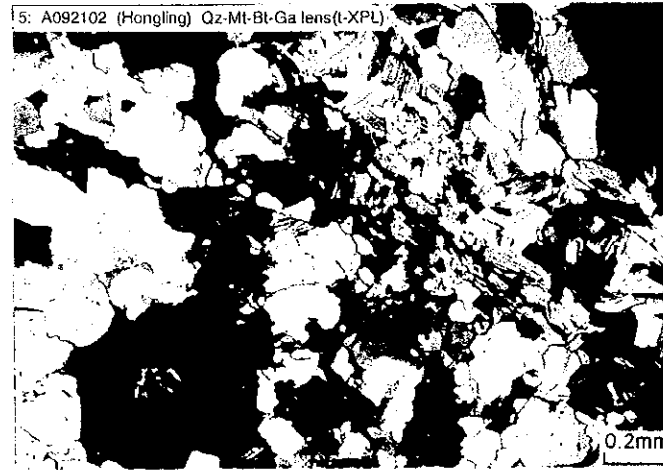
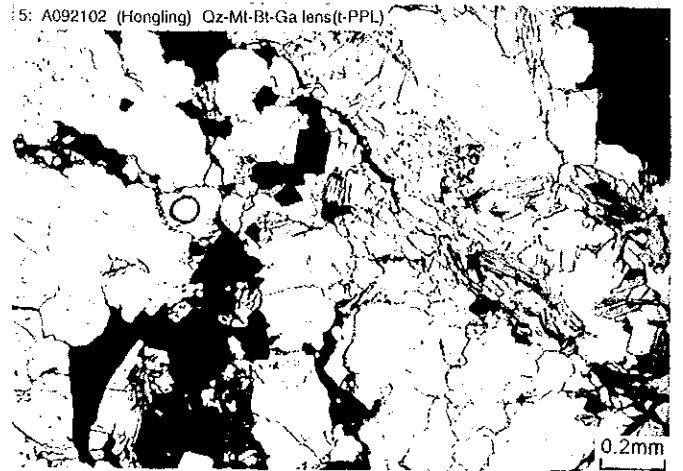
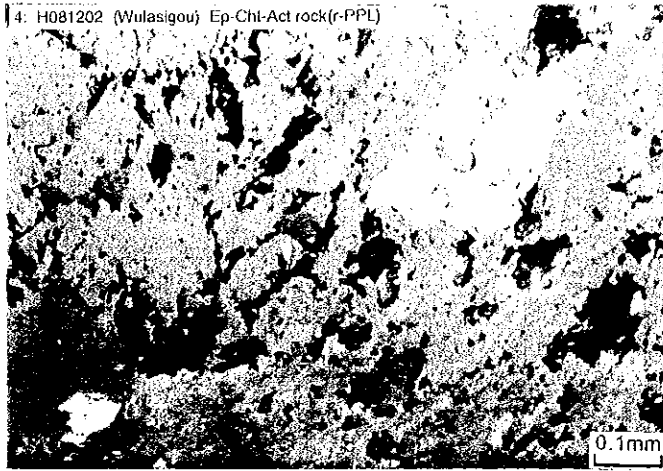
[Abbreviations]

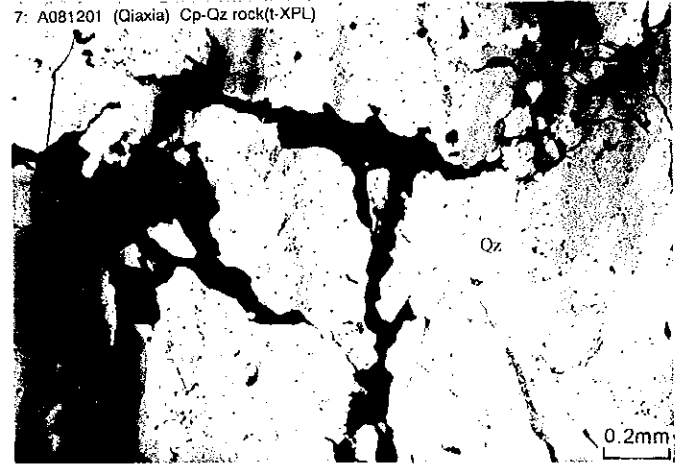
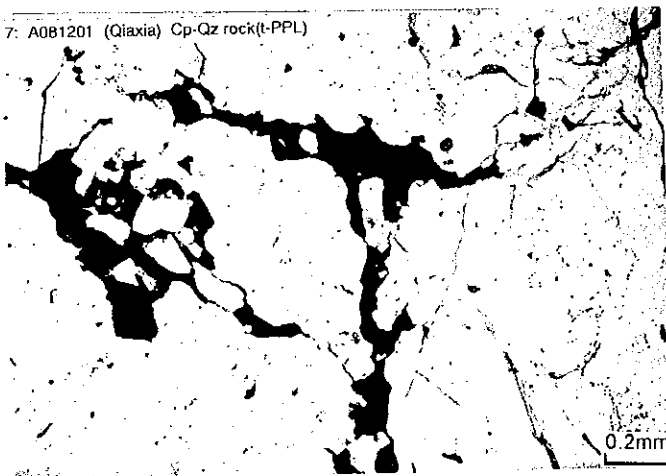
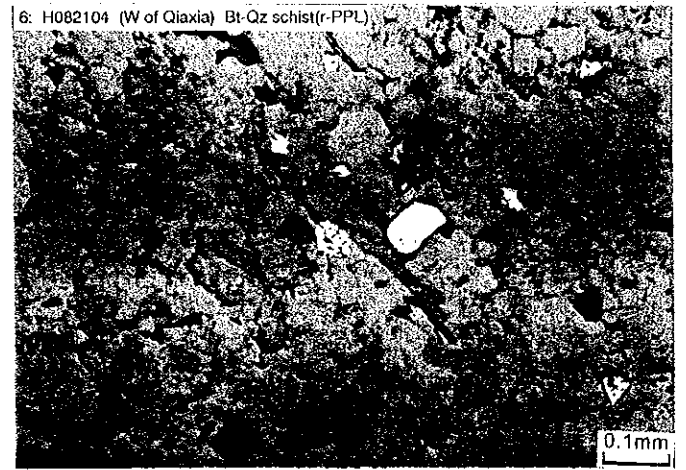
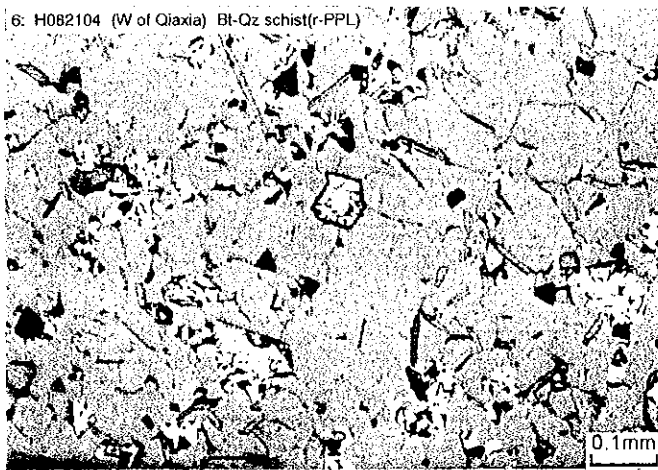
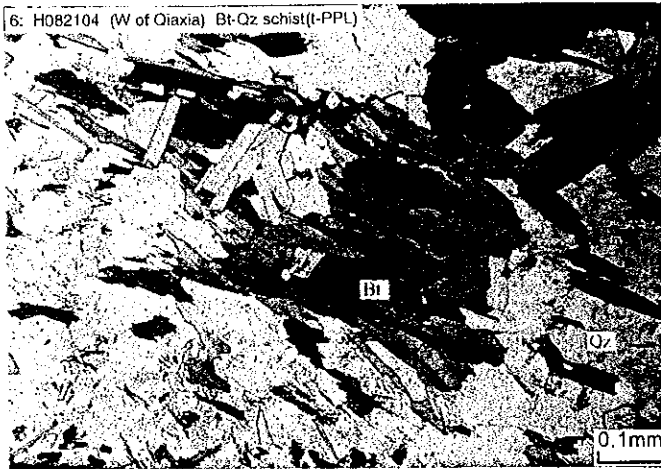
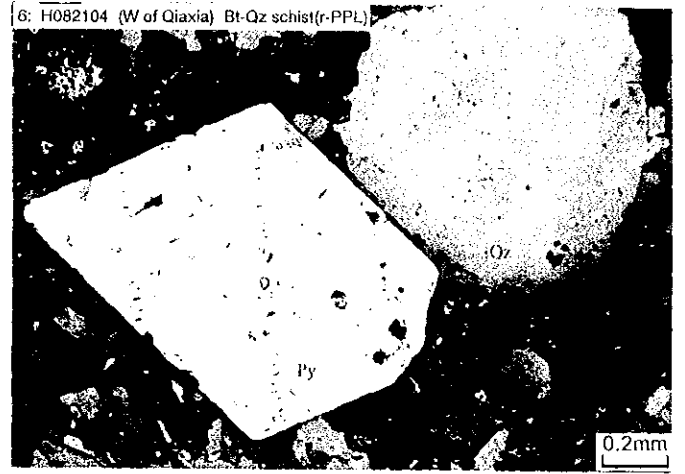
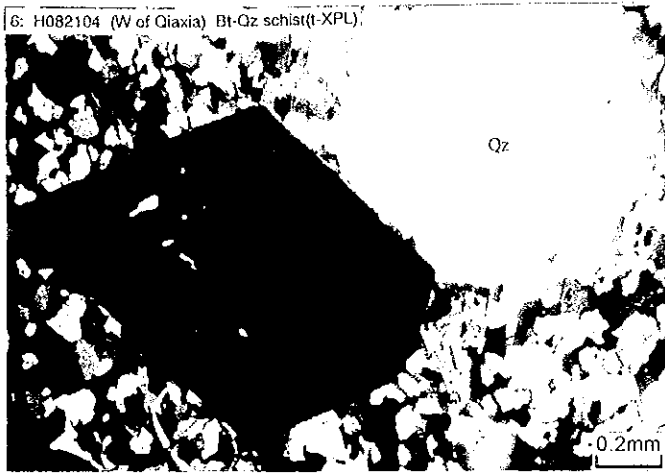
Act: Actinolite	Chr: Chrysocolla	Gr: Graphite	Pn: Pentlandite	Sta: Staurolite	A: Assay
Ap: Apatite	Cp: Chalcopyrite	Hb: Hornblende	Po: Pyrrhotite	Td: Tetrahedrite	F: Fluid inclusion homogenization temp. measurement
Asp: Arsenopyrite	Cpx: Clinopyroxene	Hm: Hematite	Py: Pyrite	Trm: Tourmaline	R: Resistivity & chargeability test
Bi-Te: Bi-Te mineral	El: Electrum	Ms: Muscovite	Qz: Quartz	Zr: Zircon	X: X-ray diffraction analysis
Bt: Biotite	Ep: Epidote	Mt: Magnetite	Sd: Siderite		
Cal: Calcite	Ga: Garnet	Ol: Olivine	Sp: Sphalerite		
Cc: Chalcocite	Gn: Galena	Opx: Orthopyroxene	Sph: Sphene		
Chl: Chlorite	Goe: Goethite	Pl: Plagioclase	Srp: Serpentine		



卷末資料 2 - 2 - 2 鉍石研磨薄片顯微鏡写真 (2/20)

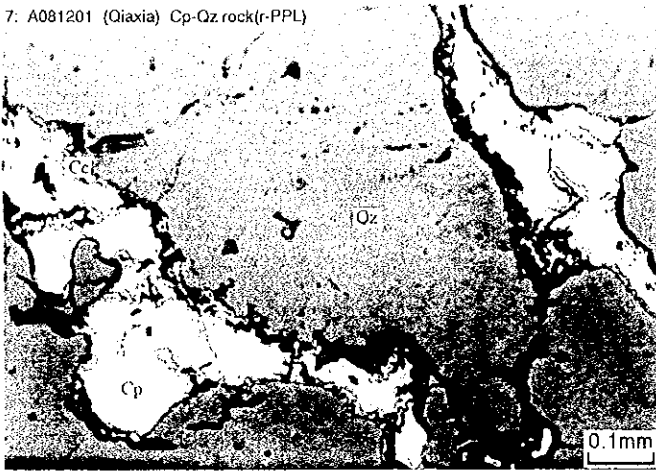




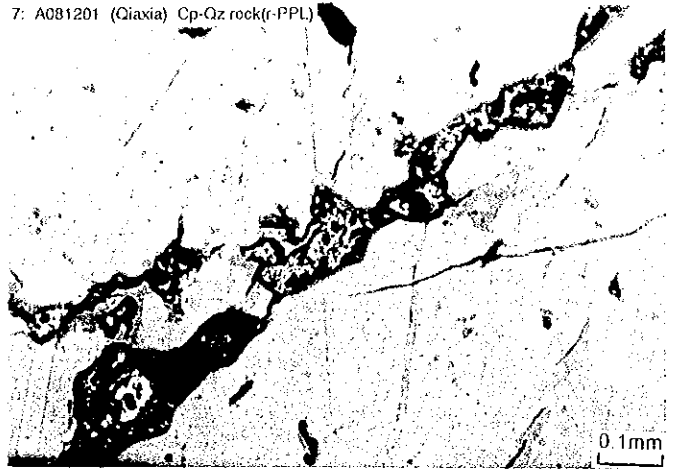


卷末資料 2 - 2 - 2 鉍石研磨薄片顯微鏡写真 (5/20)

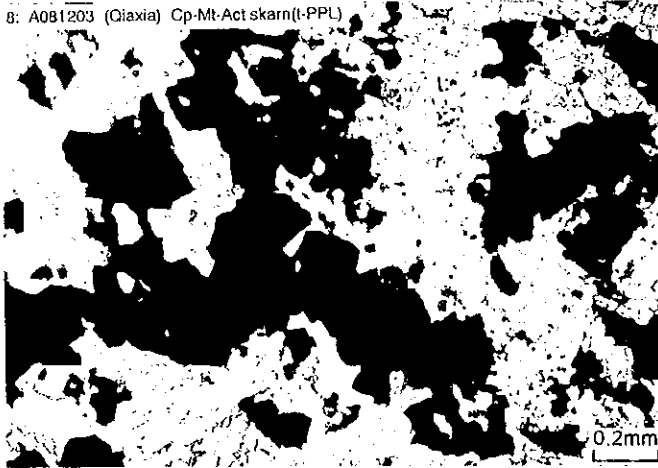
7: A081201 (Qiaxia) Cp-Qz rock(r-PPL)



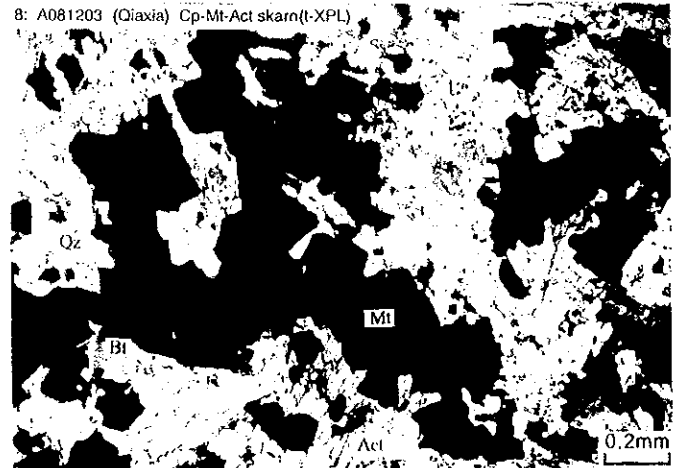
7: A081201 (Qiaxia) Cp-Qz rock(r-PPL)



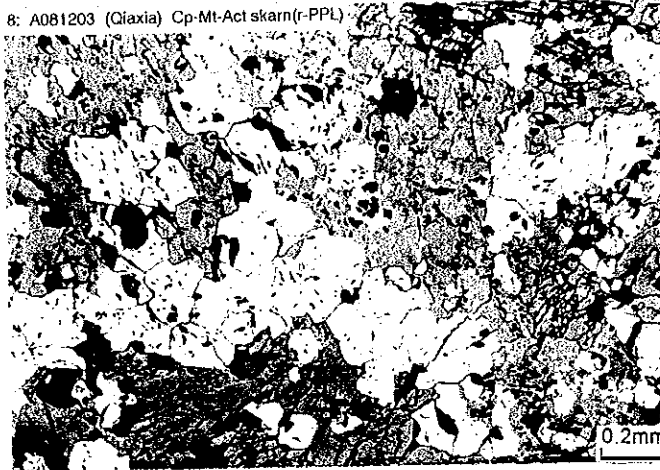
8: A081203 (Qiaxia) Cp-Mt-Act skarn(t-PPL)



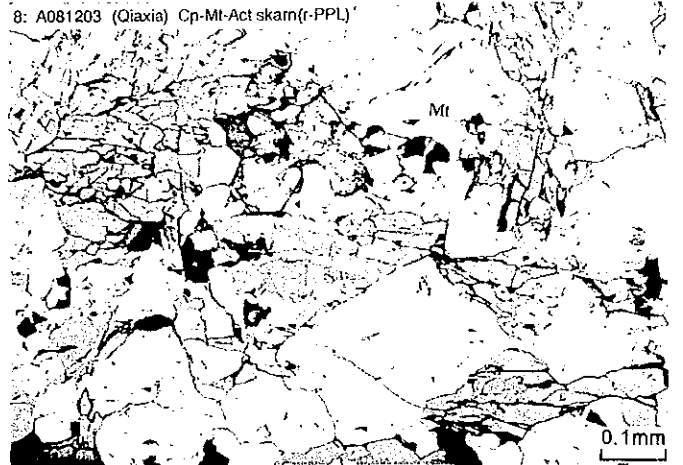
8: A081203 (Qiaxia) Cp-Mt-Act skarn(t-XPL)



8: A081203 (Qiaxia) Cp-Mt-Act skarn(r-PPL)



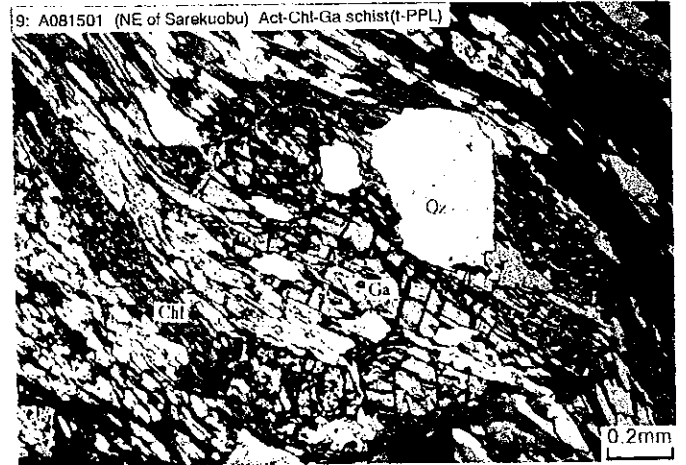
8: A081203 (Qiaxia) Cp-Mt-Act skarn(r-PPL)



8: A081203 (Qiaxia) Cp-Mt-Act skarn(r-PPL)

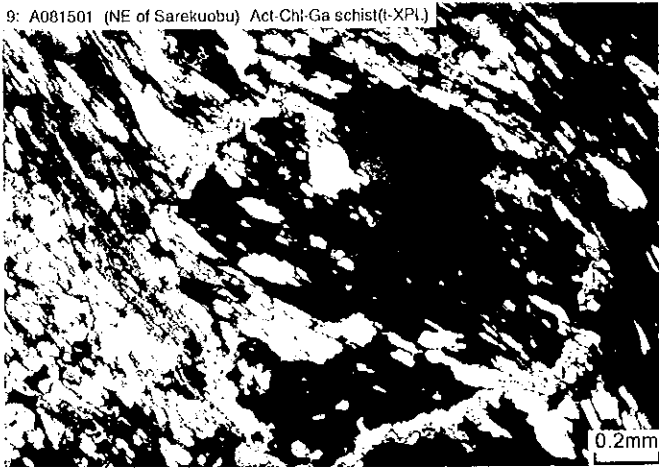


9: A081501 (NE of Sarekuobu) Act-Chl-Ga schist(t-PPL)

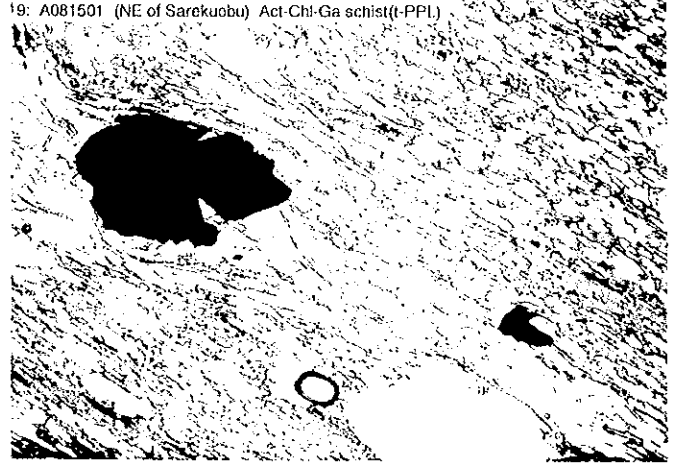


卷末資料 2 - 2 - 2 鉍石研磨薄片顯微鏡写真 (6/20)

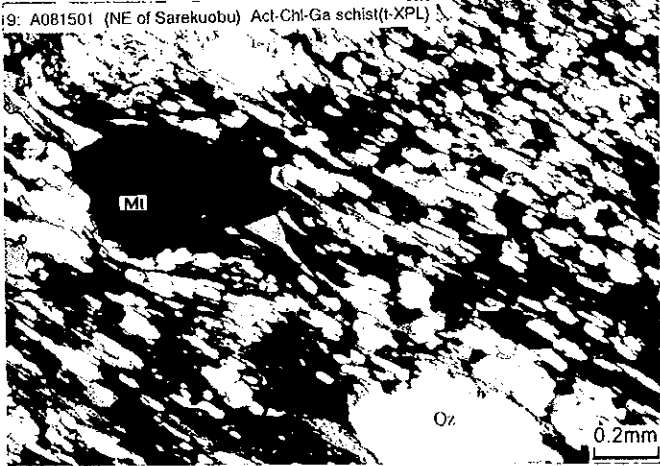
9: A081501 (NE of Sarekuobu) Act-Chl-Ga schist(t-XPL)



19: A081501 (NE of Sarekuobu) Act-Chl-Ga schist(t-PPL)



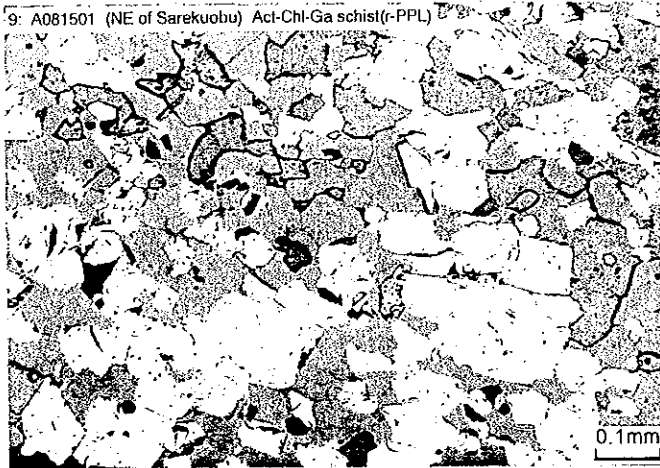
9: A081501 (NE of Sarekuobu) Act-Chl-Ga schist(t-XPL)



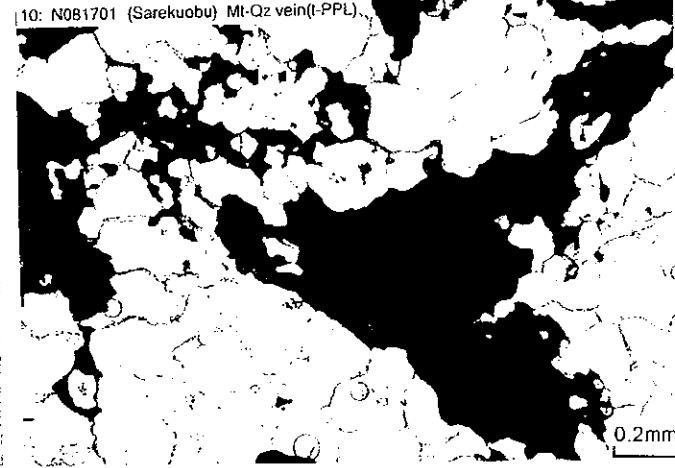
9: A081501 (NE of Sarekuobu) Act-Chl-Ga schist(r-PPL)



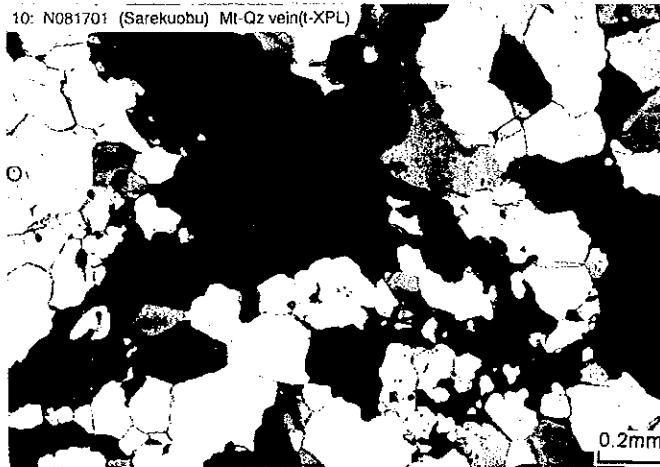
9: A081501 (NE of Sarekuobu) Act-Chl-Ga schist(r-PPL)



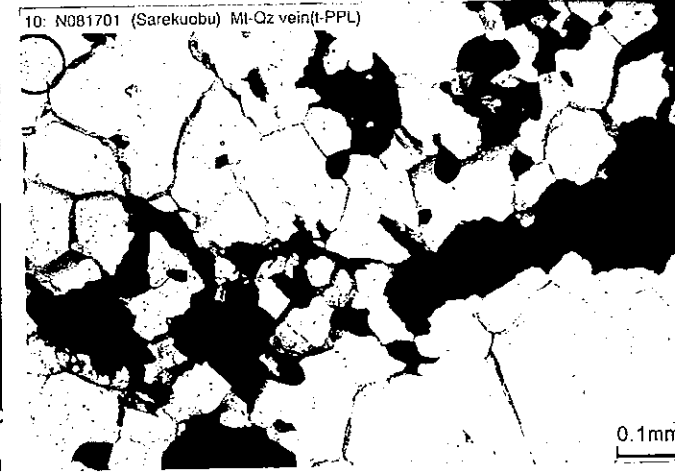
10: N081701 (Sarekuobu) Mt-Qz vein(t-PPL)



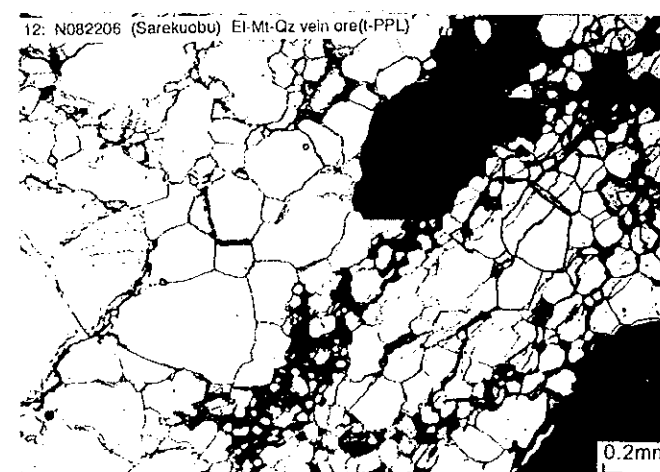
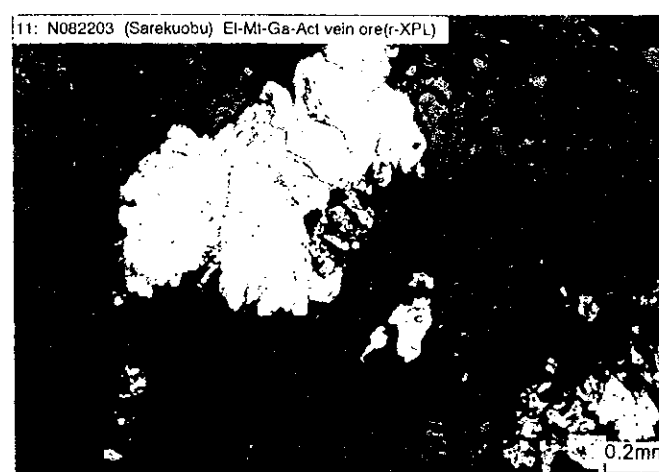
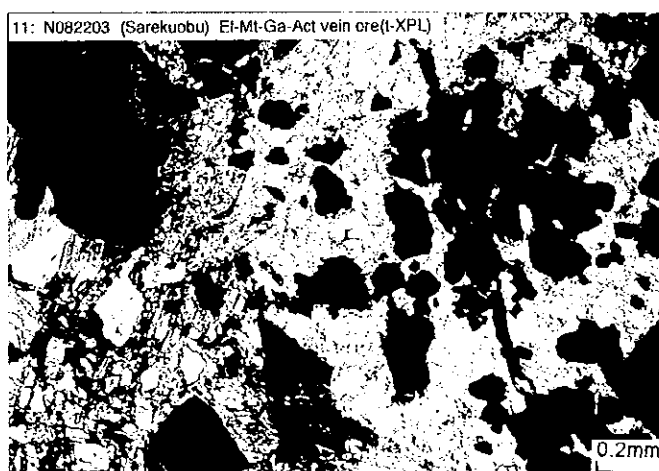
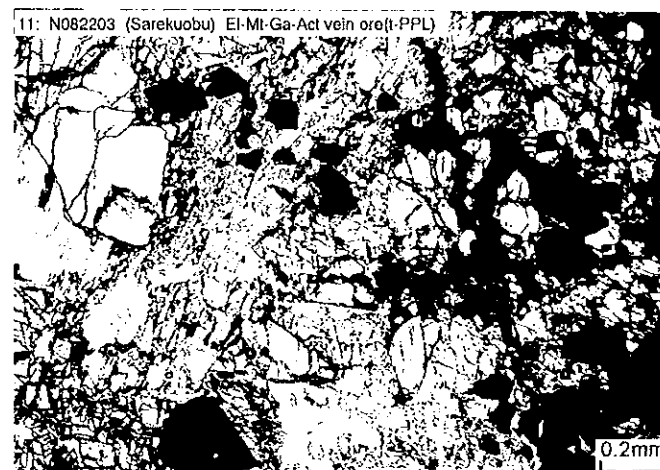
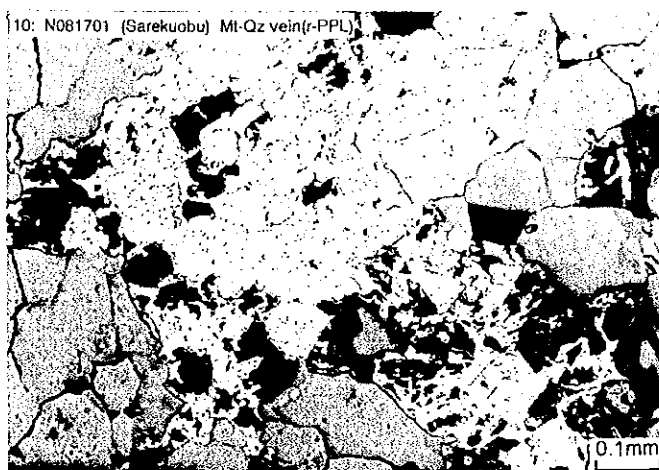
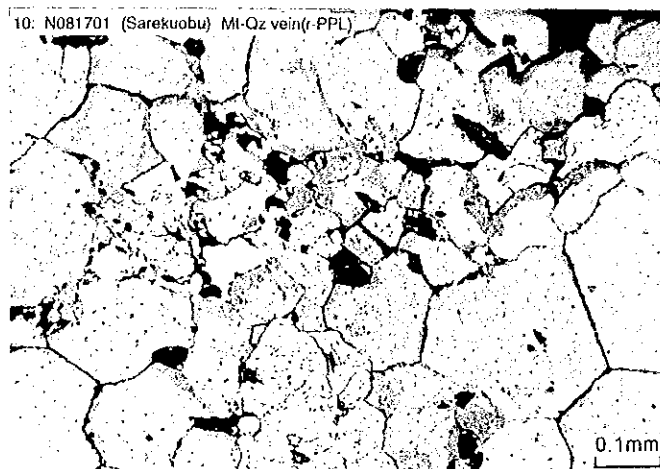
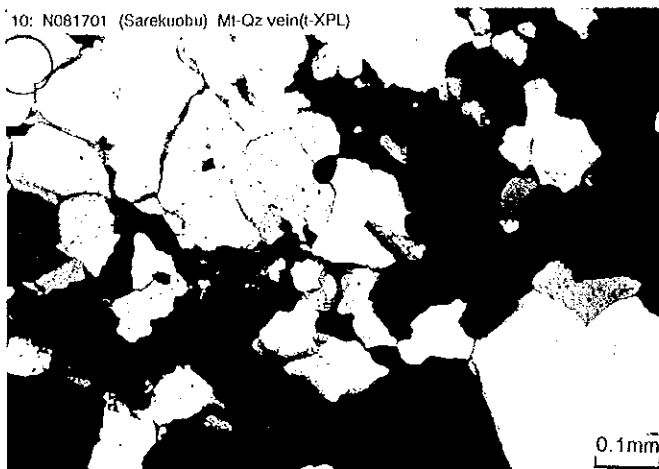
10: N081701 (Sarekuobu) Mt-Qz vein(t-XPL)

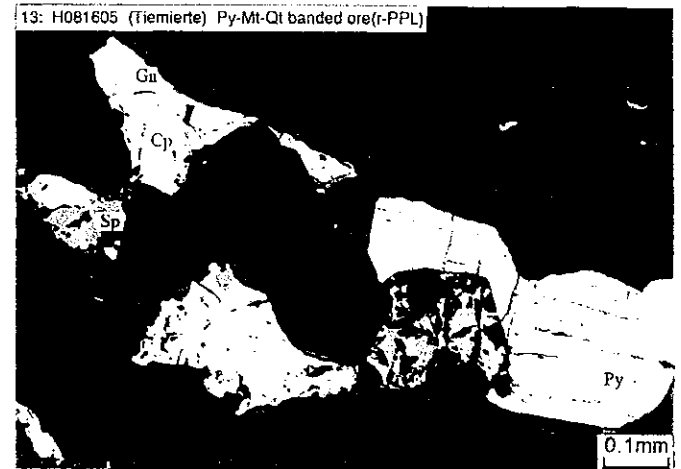
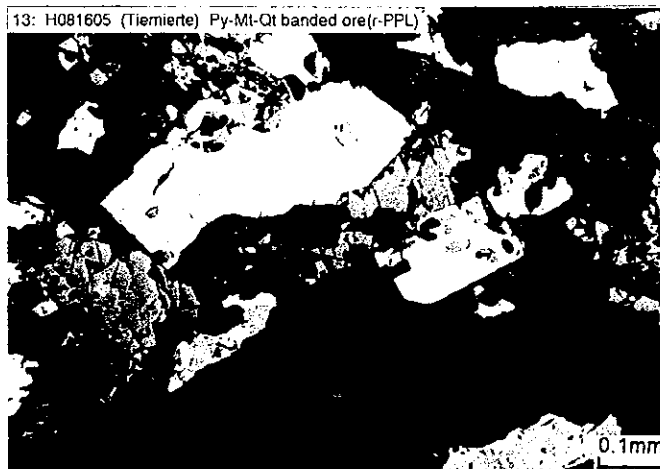
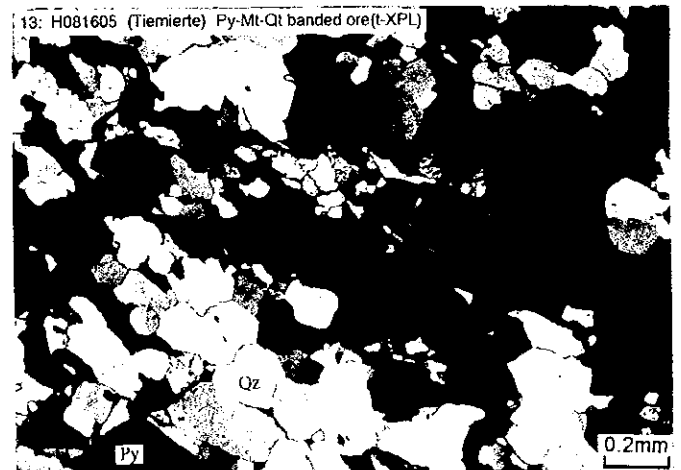
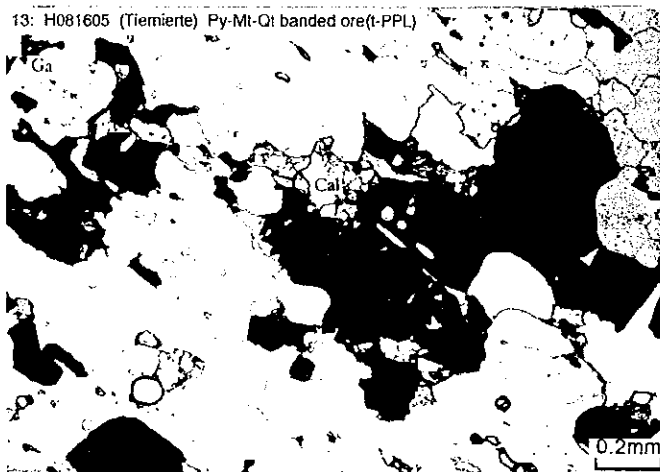
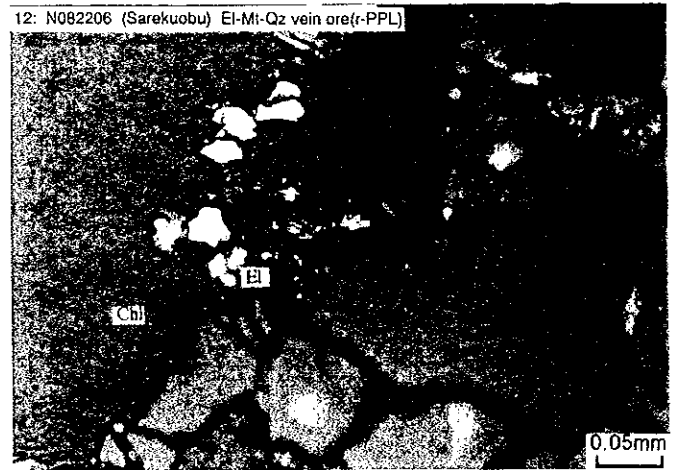
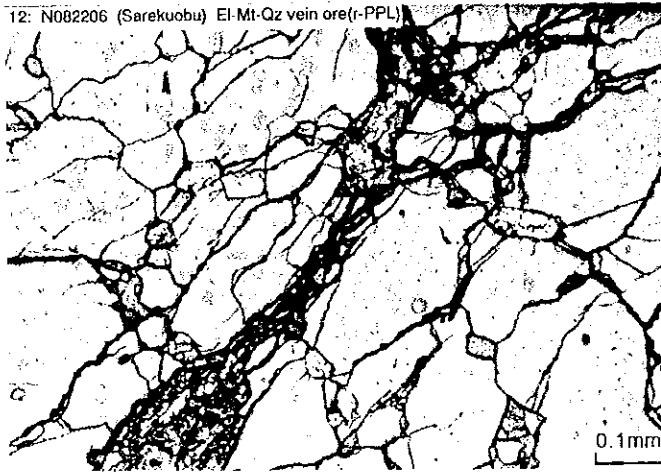
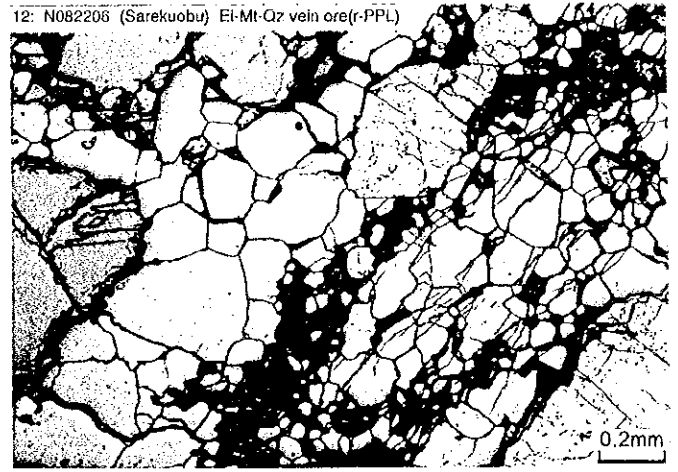
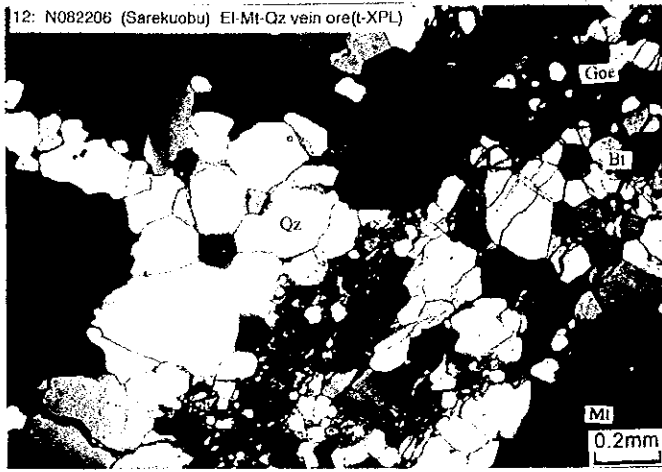


10: N081701 (Sarekuobu) Mt-Qz vein(t-PPL)

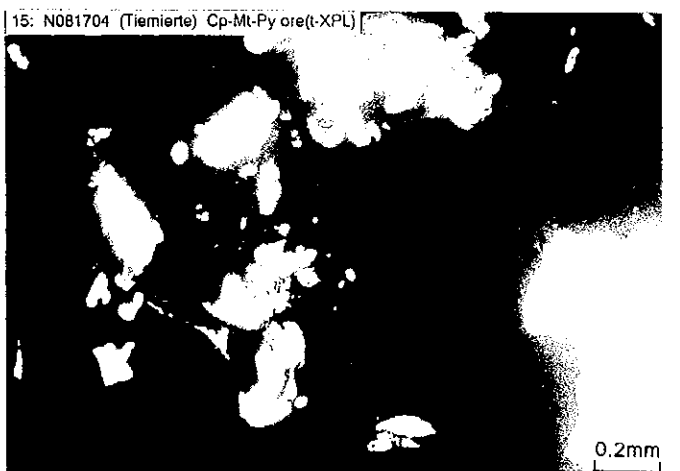
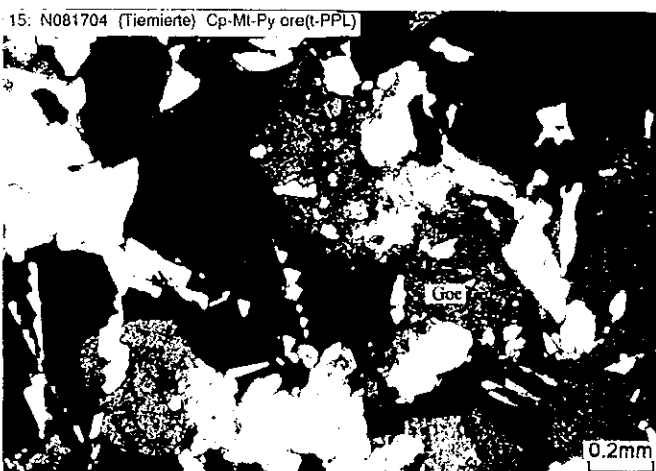
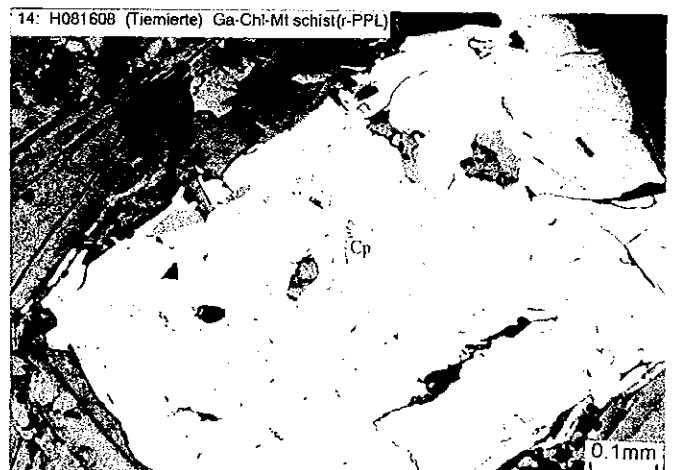
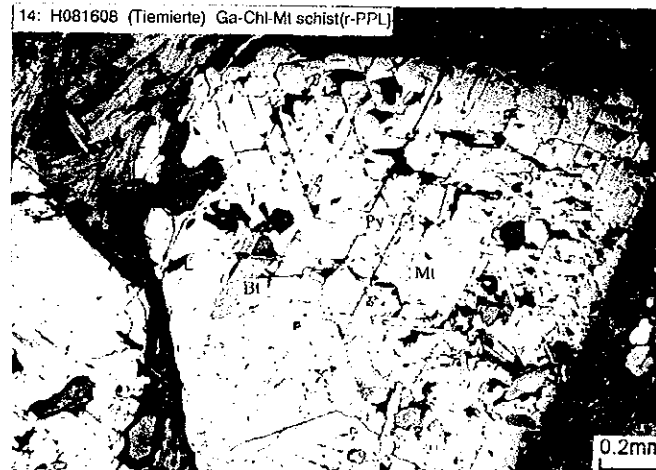
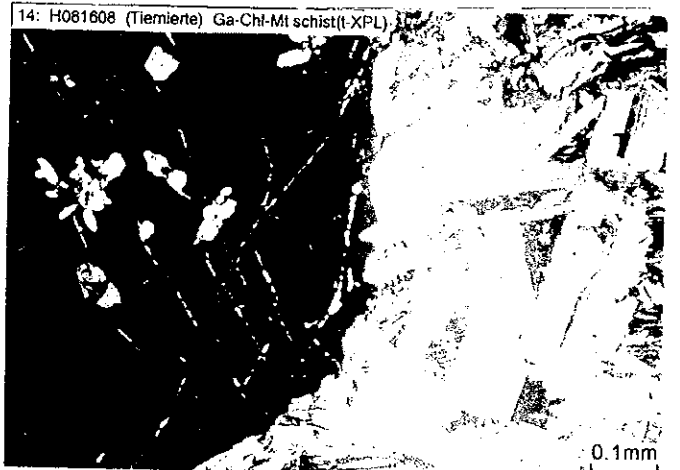
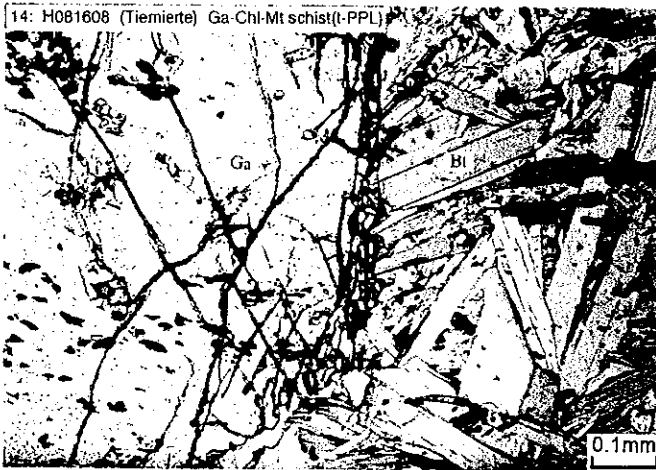
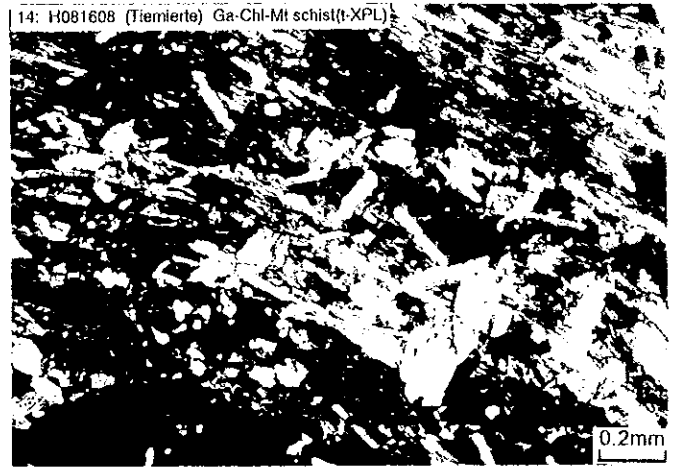
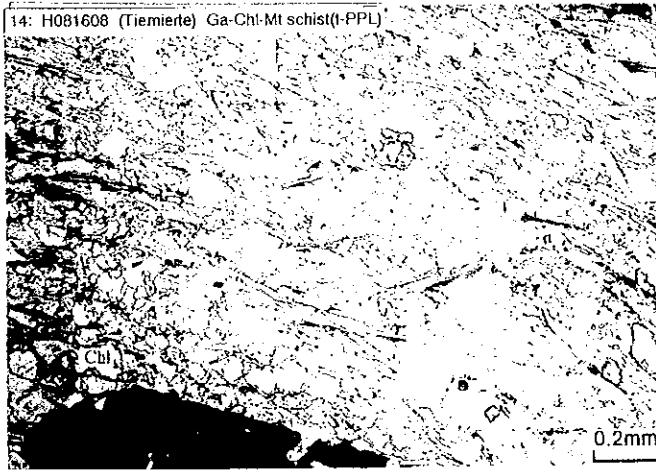


卷末資料 2 - 2 - 2 鉍石研磨薄片顯微鏡写真 (7/20)

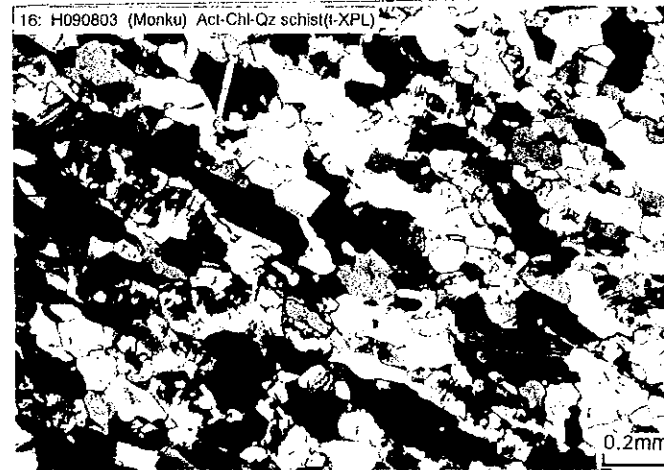
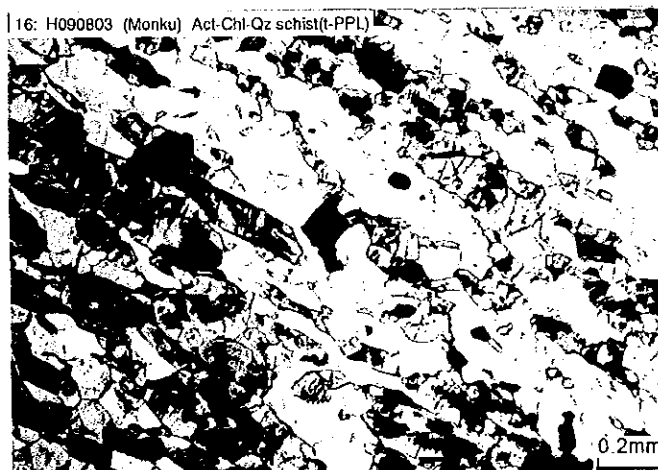
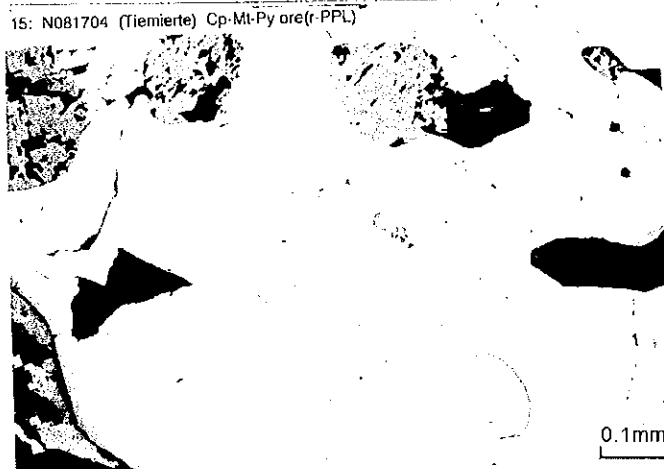
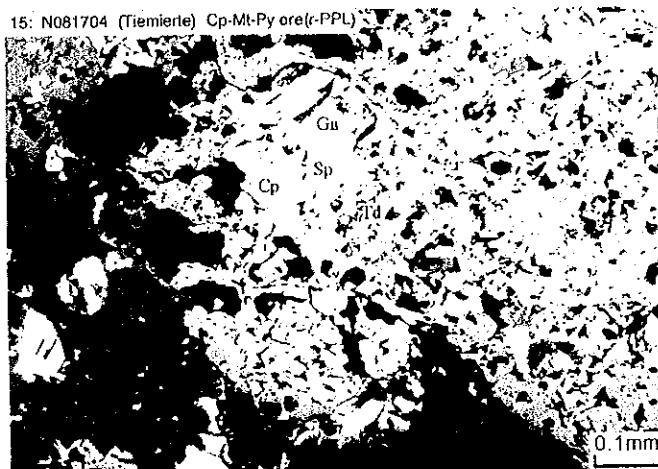
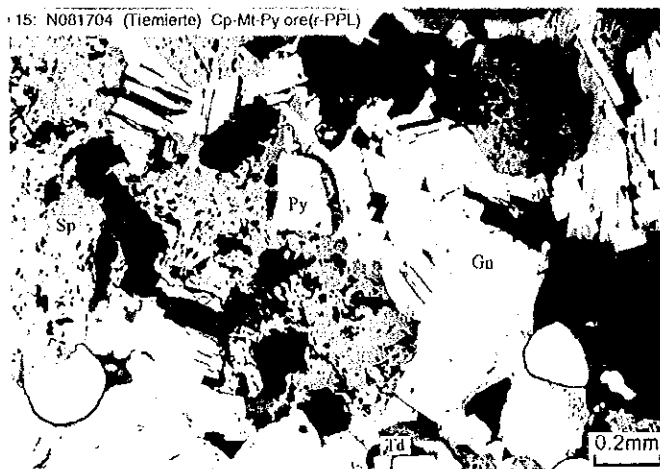
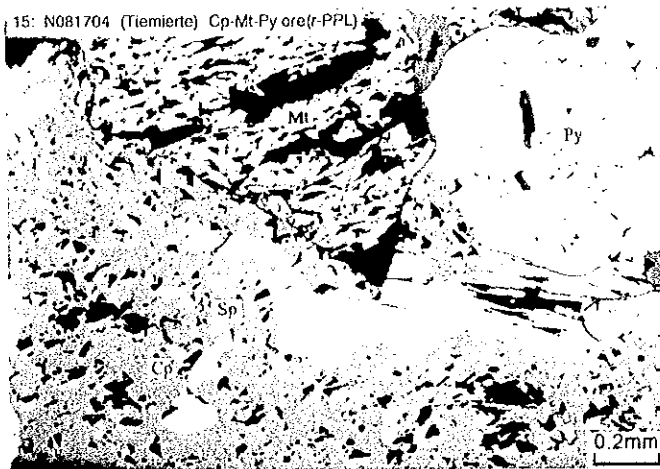


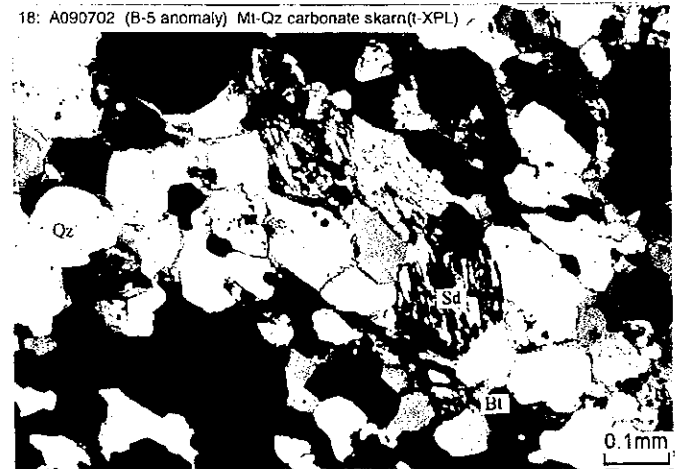
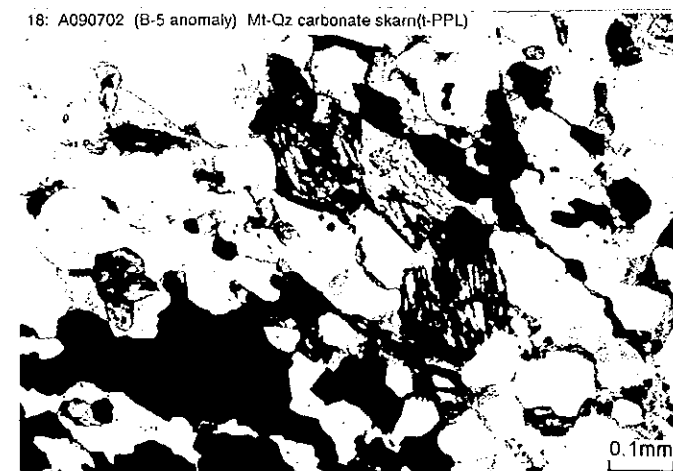
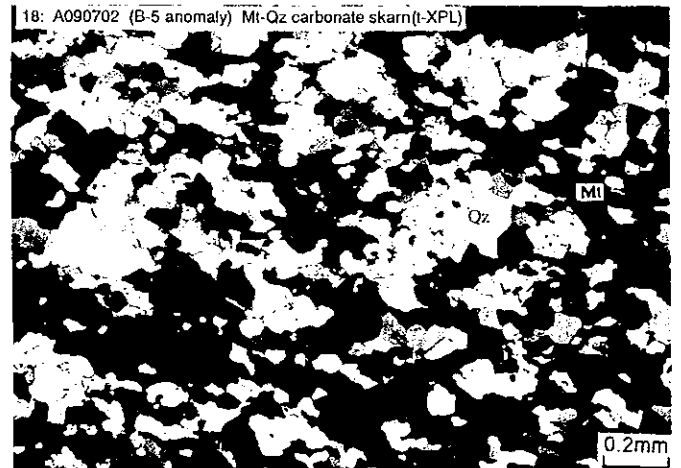
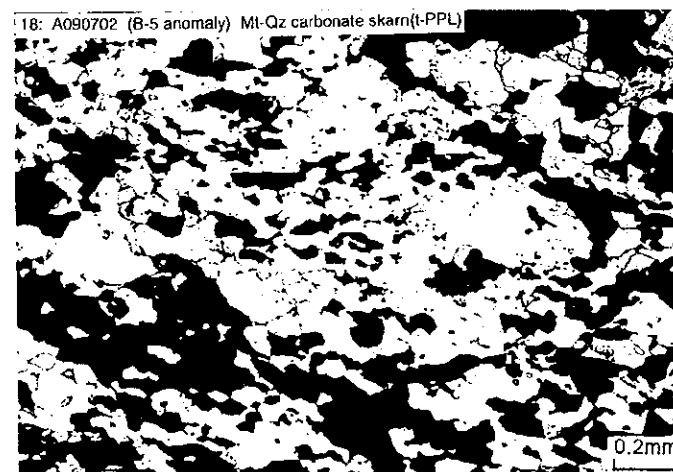
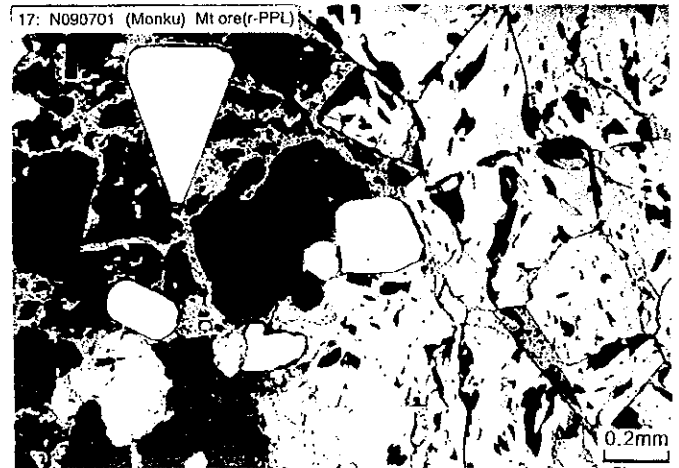
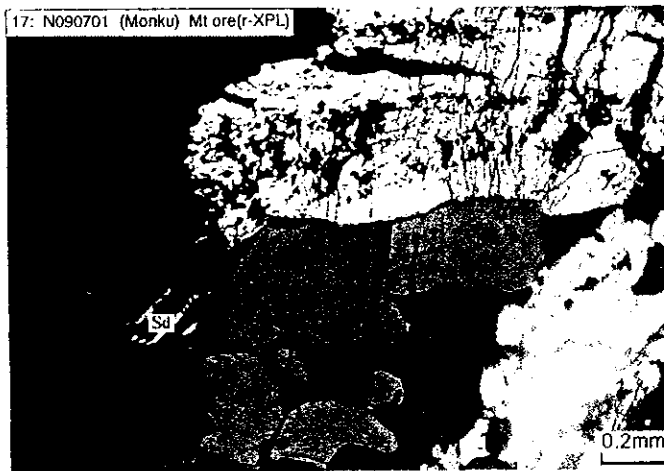
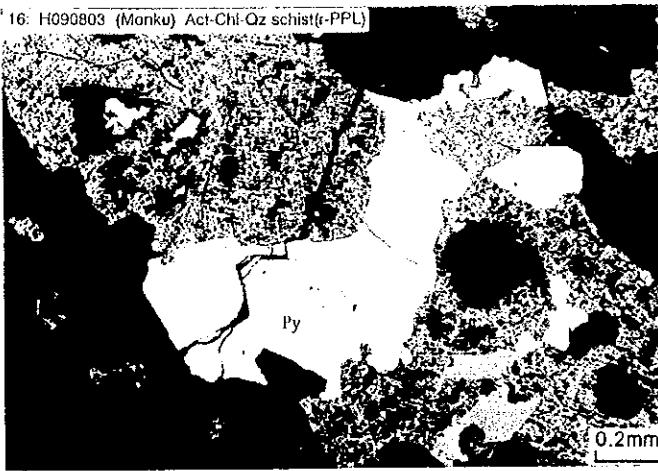


卷末資料 2 - 2 - 2 鉍石研磨薄片顯微鏡写真 (9/20)

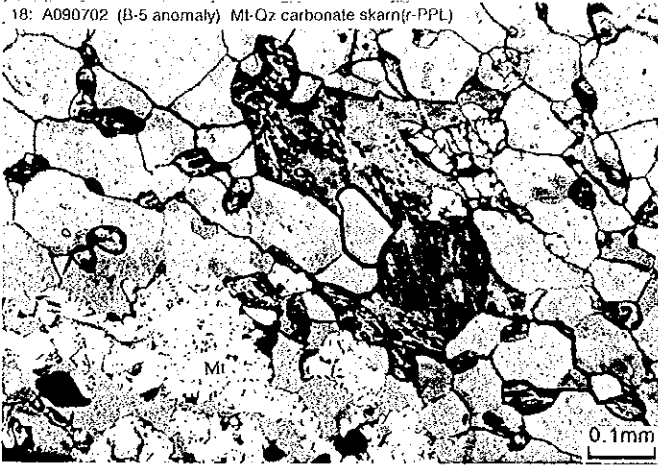


卷末資料 2 - 2 - 2 鉍石研磨薄片顯微鏡写真 (10/20)

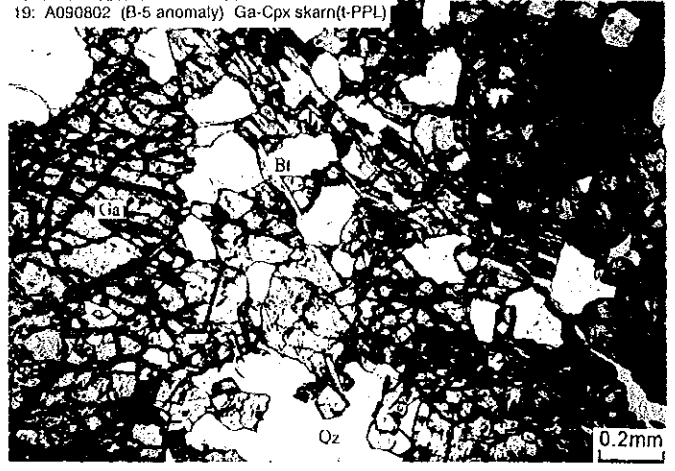




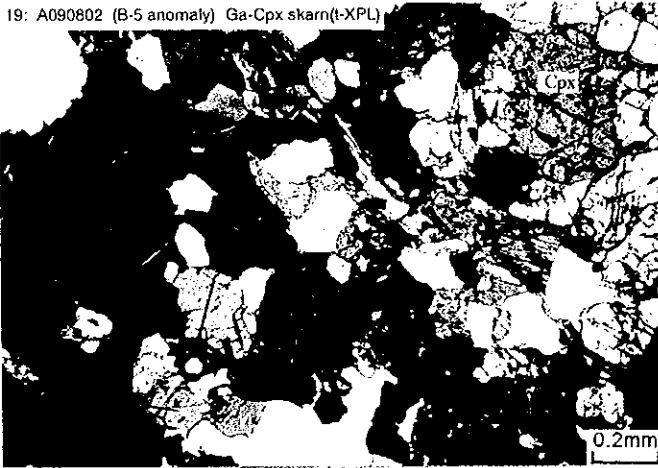
18: A090702 (B-5 anomaly) Mt-Oz carbonate skarn(r-PPL)



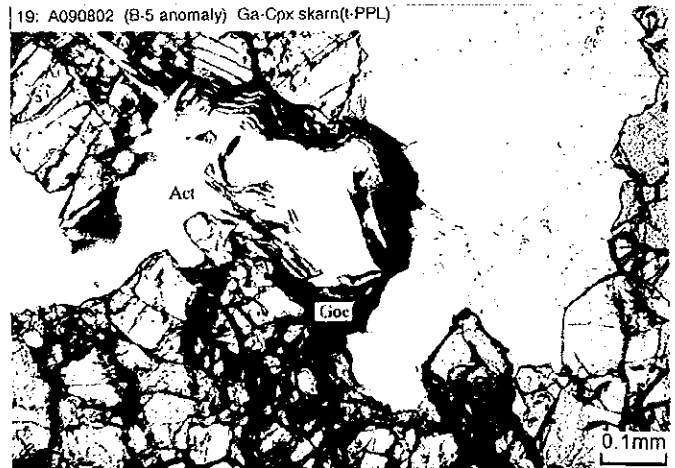
19: A090802 (B-5 anomaly) Ga-Cpx skarn(t-PPL)



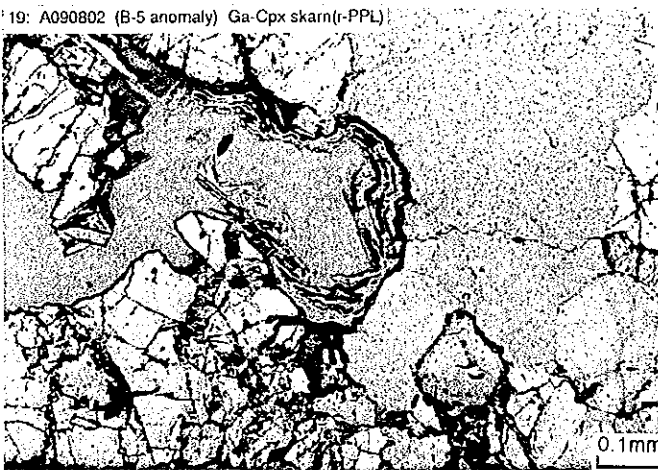
19: A090802 (B-5 anomaly) Ga-Cpx skarn(t-XPL)



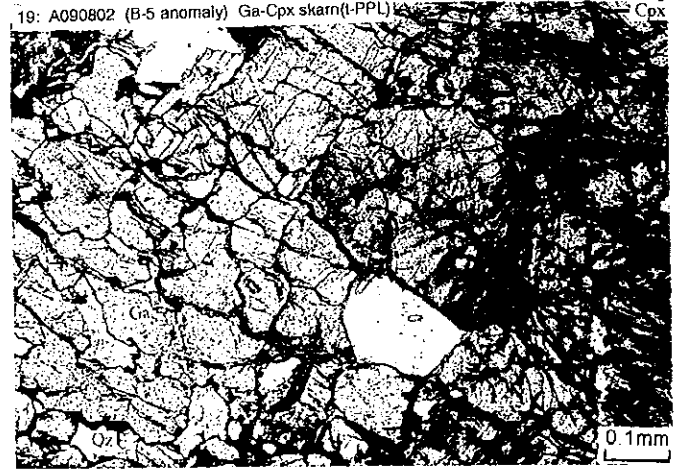
19: A090802 (B-5 anomaly) Ga-Cpx skarn(t-PPL)



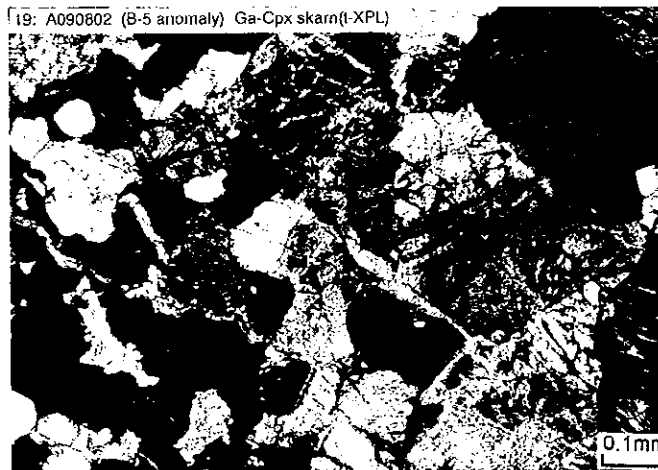
19: A090802 (B-5 anomaly) Ga-Cpx skarn(t-PPL)



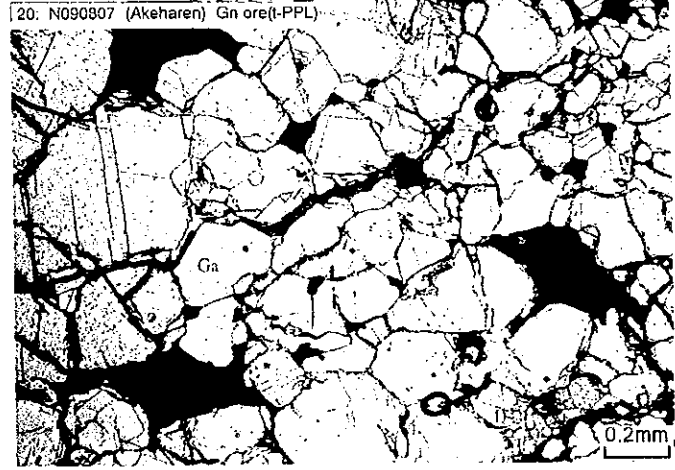
19: A090802 (B-5 anomaly) Ga-Cpx skarn(t-PPL)

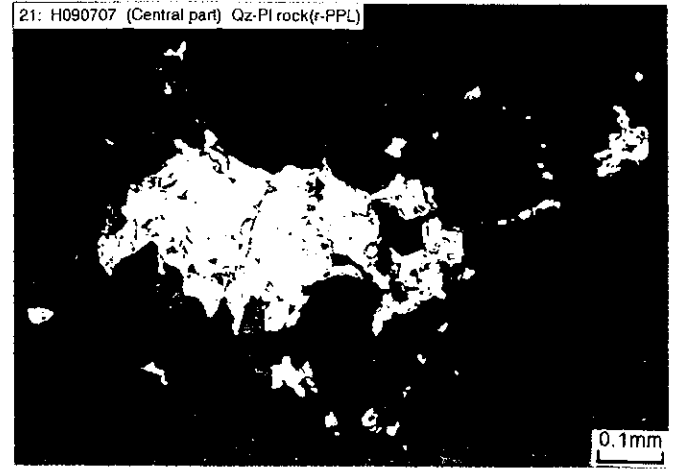
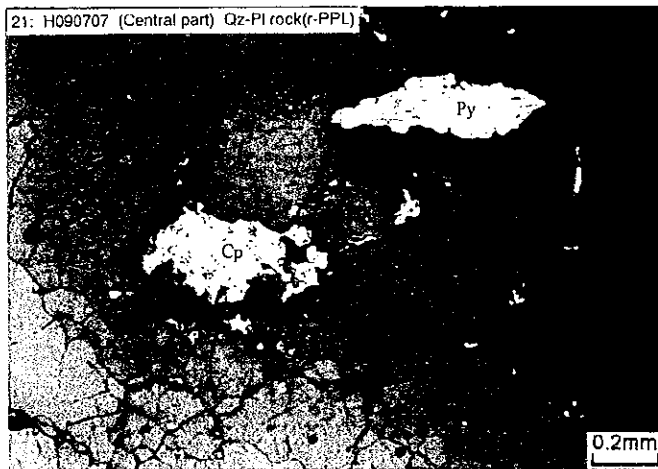
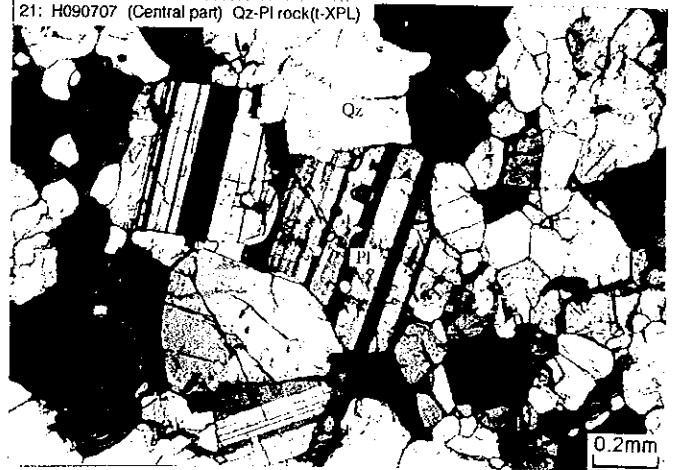
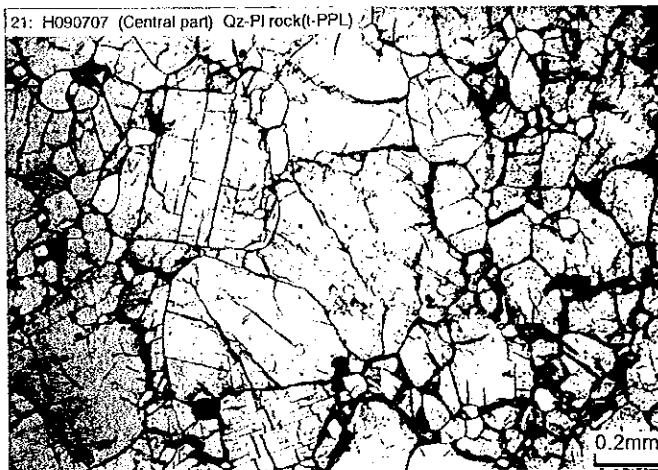
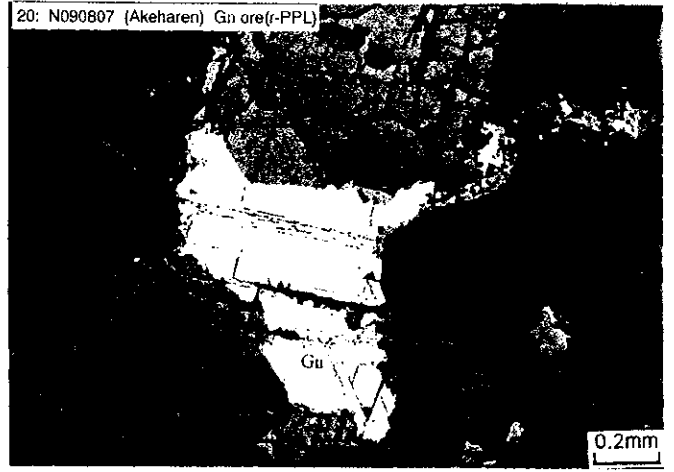
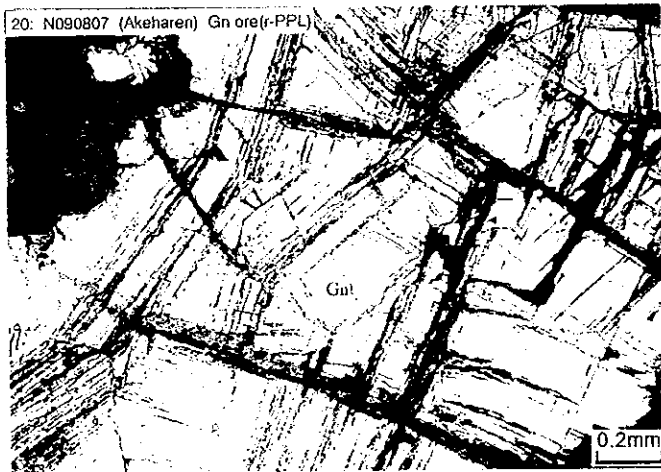
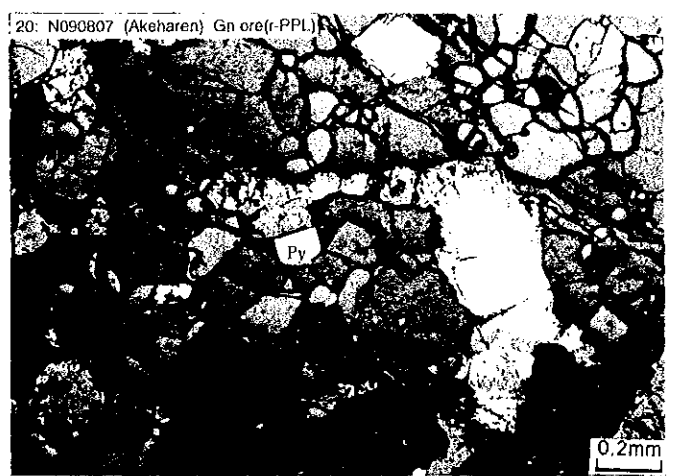


19: A090802 (B-5 anomaly) Ga-Cpx skarn(t-XPL)



20: N090807 (Akeharen) Gn ore(t-PPL)





卷末資料 2 - 2 - 2 鉍石研磨薄片顯微鏡写真 (14/20)

