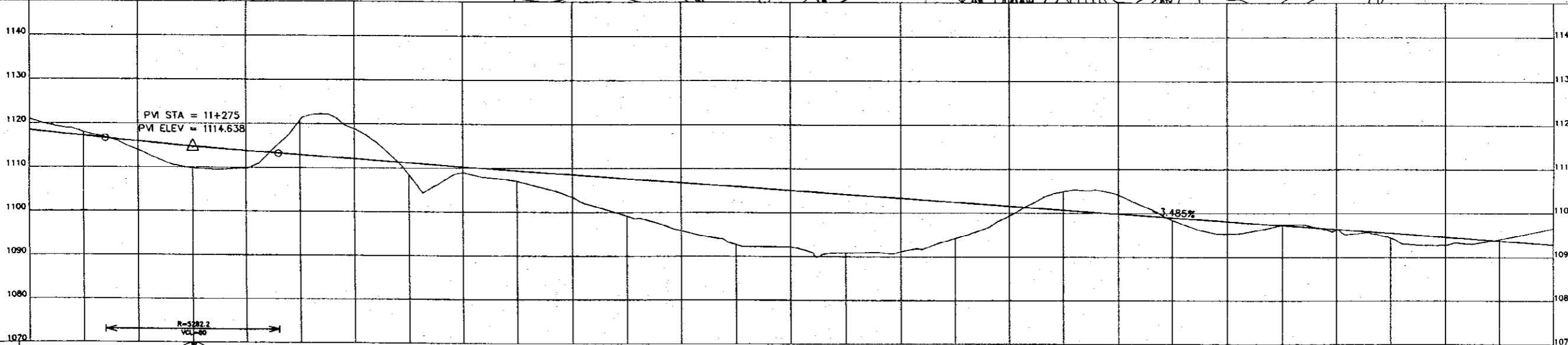
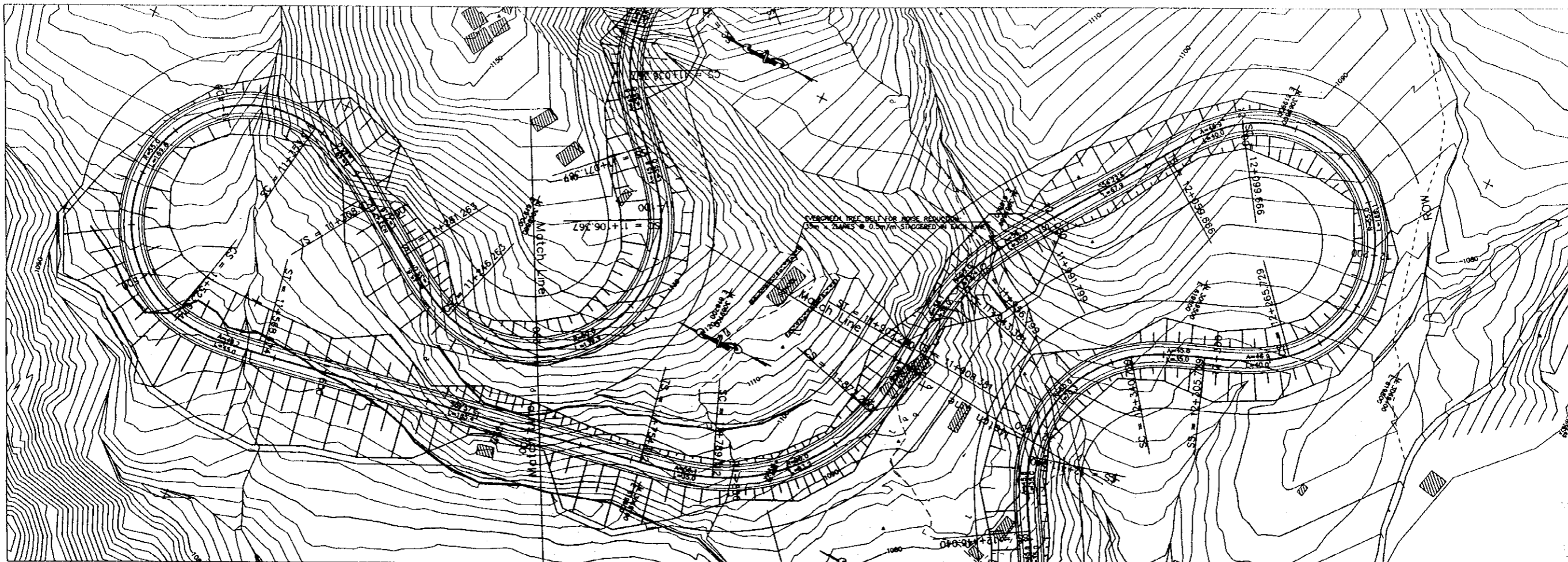


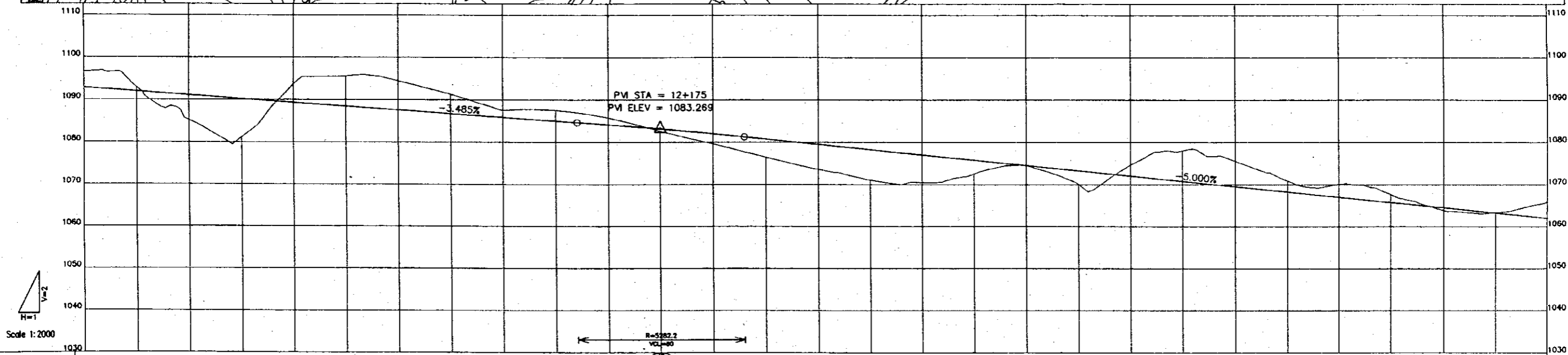
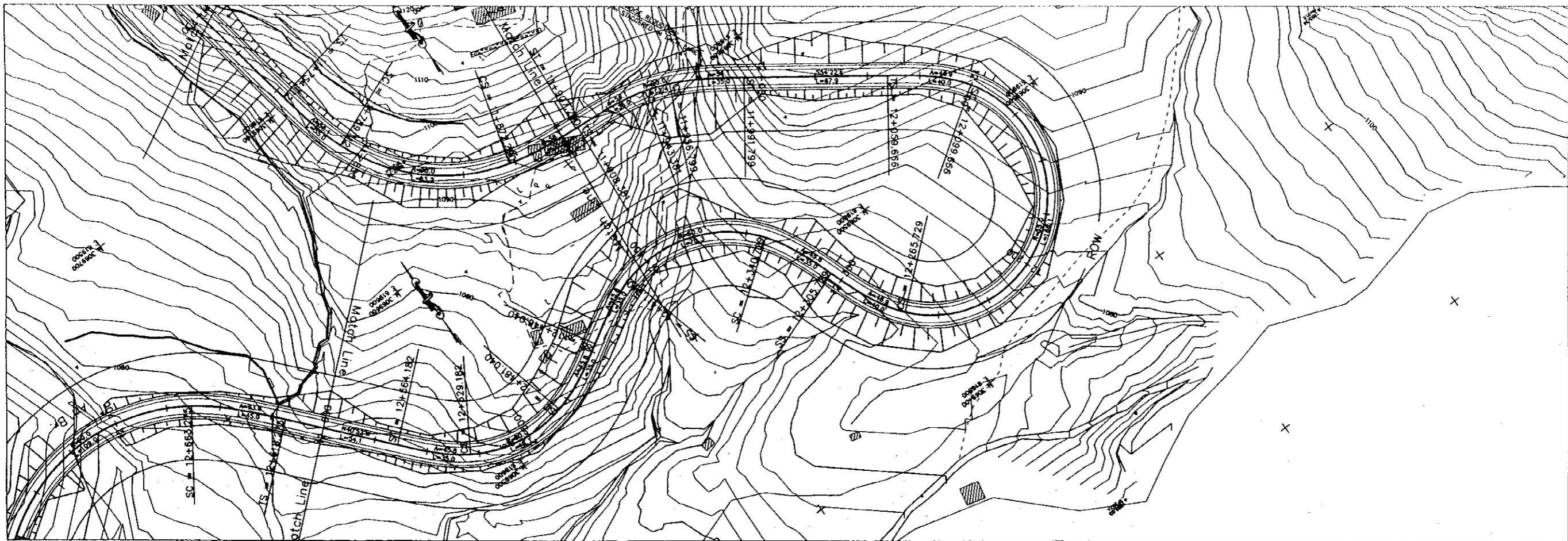
PROFILE																				
FINISHED GRADE	1153.388	1152.138	1150.888	1149.638	1148.388	1147.138	1145.888	1144.638	1143.388	1142.138	1140.888	1139.638	1138.388	1137.138	1135.888	1134.638	1133.388	1132.138	1130.888	1129.638
EXISTING GROUND	1154.578	1155.627	1157.689	1158.444	1154.674	1157.503	1153.188	1141.223	1140.081	1149.834	1135.776	1145.407	1144.769	1139.042	1134.444	1131.379	1130.010	1138.290	1141.833	1129.392
STATION	10+500	10+525	10+550	10+575	10+600	10+625	10+650	10+675	10+700	10+725	10+750	10+775	10+800	10+825	10+850	10+875	10+900	10+925	10+950	10+975
HORIZONTAL ALIGNMENT	$10+512.977$ $A=45.826$ $10+547.977$ $R=60$ $10+604.181$ $A=45.826$ $10+639.181$ $10+784.440$ $A=45.826$ $10+799.440$ $R=60$ $10+825.967$ $A=45.826$ $10+870.967$ $10+846.207$ $A=45.826$ $10+901.207$ $R=60$ $11+071.367$ $A=45.826$ $11+106.367$ $R=60$																			

PROJECT NAME	CLIENT	CONSULTANT	DWG TITLE	DWG NO.
THE FEASIBILITY STUDY ON THE CONSTRUCTION OF KATHMANDU - NAUBISE ALTERNATE ROAD IN THE KINGDOM OF NEPAL	JAPAN INTERNATIONAL COOPERATION AGENCY HIS MAJESTY'S GOVERNMENT OF NEPAL MINISTRY OF PHYSICAL PLANNING AND WORKS DEPARTMENT OF ROADS	NIPPON KOEI CO., LTD. Consulting Engineers Tokyo, JAPAN	PLAN AND PROFILE STA.10+500 to STA.11+200	Hw-20




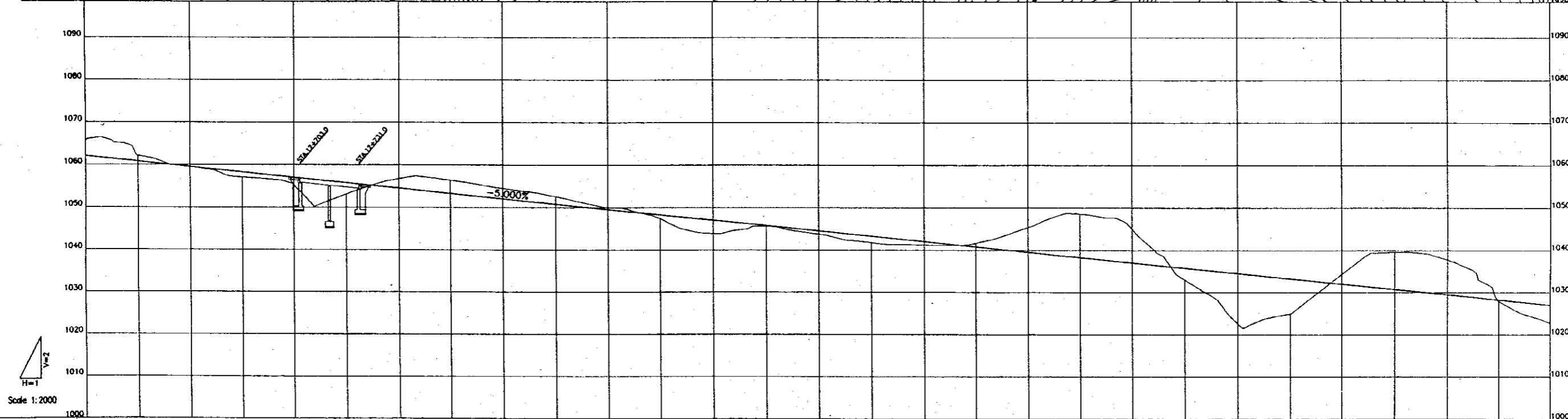
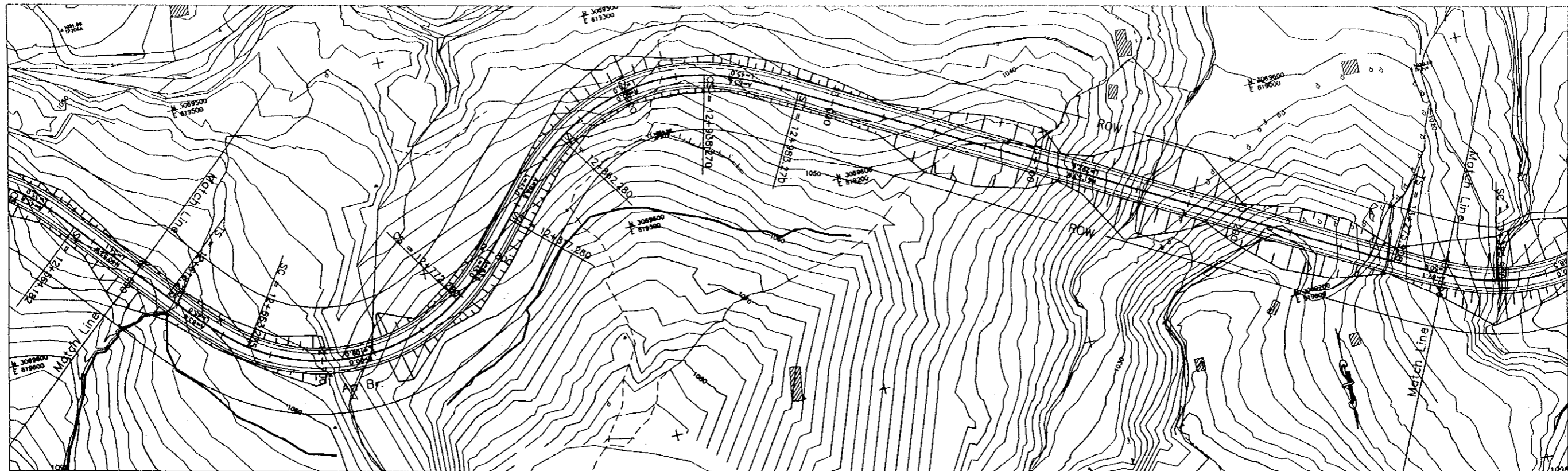
PROFILE	Stationing: 11+200 to 11+900																												
FINISHED GRADE	1118.360	1117.138	1115.909	1114.789	1113.768	1112.895	1112.024	1111.152	1110.281	1109.410	1108.538	1107.667	1106.796	1105.924	1105.053	1104.181	1103.310	1102.439	1101.567	1100.696	1099.825	1098.953	1098.082	1097.210	1096.339	1095.468	1094.596	1093.725	1092.854
EXISTING GROUND	1120.921	1117.947	1113.901	1109.805	1109.811	1120.807	1118.655	1108.439	1108.920	1107.051	1103.411	1099.114	1095.791	1092.692	1082.103	1090.833	1091.191	1094.258	1098.375	1104.937	1104.131	1098.389	1095.271	1097.339	1096.255	1094.411	1092.802	1094.098	1096.572
STATION	11+200	11+225	11+250	11+275	11+300	11+325	11+350	11+375	11+400	11+425	11+450	11+475	11+500	11+525	11+550	11+575	11+600	11+625	11+650	11+675	11+700	11+725	11+750	11+775	11+800	11+825	11+850	11+875	11+900
HORIZONTAL ALIGNMENT	$R=90$ $A=43.8261+281.263$ $R=11+306.911$ $A=49.749$ $R=11+353.911$ $A=55$ $R=11+353.674$ $A=49.746$ $R=11+508.674$ $R=90$ $A=36.125$ $R=11+789.112$ $A=56.125$ $R=90$ $A=56.125$																												

PROJECT NAME	CLIENT	CONSULTANT	DWG TITLE	DWG NO.
THE FEASIBILITY STUDY ON THE CONSTRUCTION OF KATHMANDU - NAUBISE ALTERNATE ROAD IN THE KINGDOM OF NEPAL	JAPAN INTERNATIONAL COOPERATION AGENCY HIS MAJESTY'S GOVERNMENT OF NEPAL MINISTRY OF PHYSICAL PLANNING AND WORKS DEPARTMENT OF ROADS	NIPPON KOEI CO., LTD. Consulting Engineers Tokyo, JAPAN	PLAN AND PROFILE STA.11+200 to STA.11+900	Hw-21



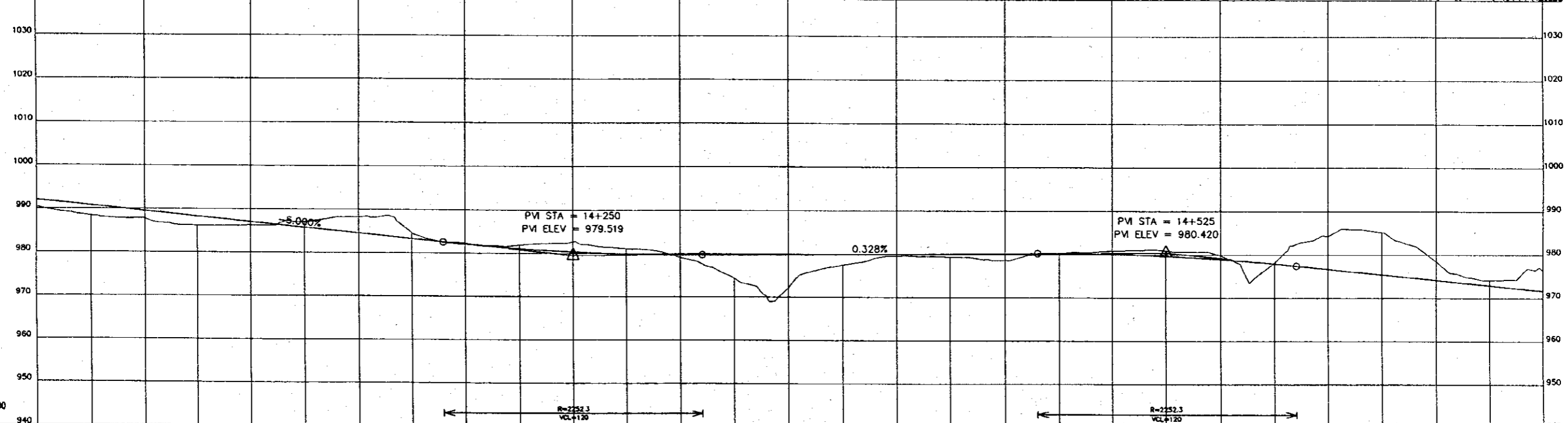
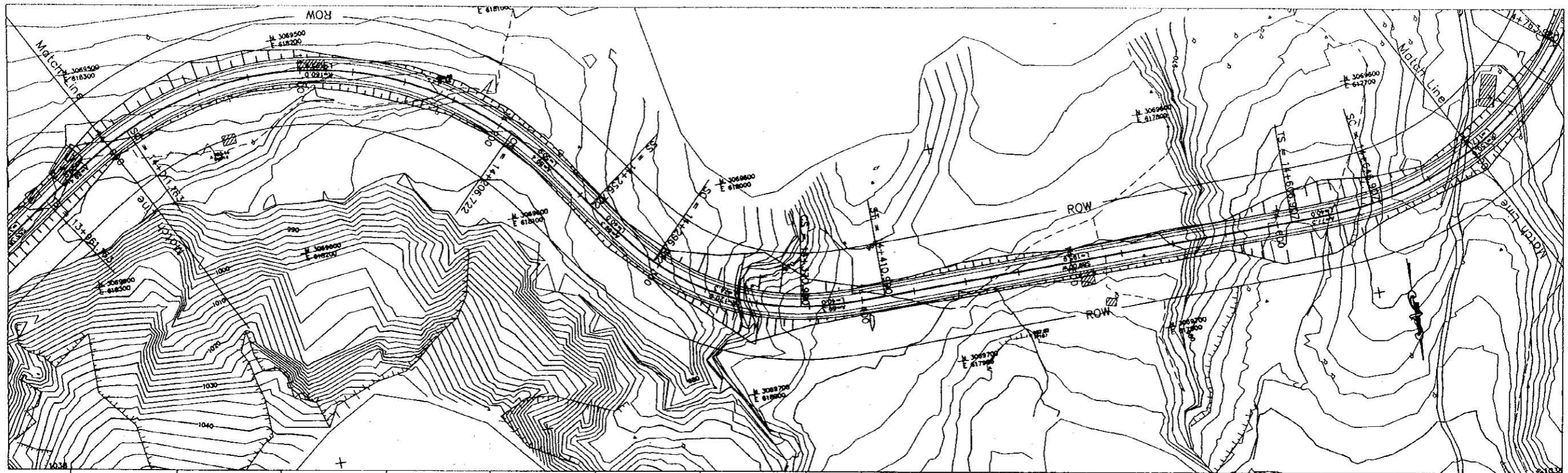
PROFILE	Stationing: 11+900 to 12+600																			
FINISHED GRADE	1092.854	1091.982	1091.111	1090.239	1089.368	1088.497	1087.625	1086.754	1085.883	1085.011	1084.139	1083.269	1082.397	1081.526	1080.654	1079.783	1078.911	1078.039	1077.167	1076.295
EXISTING GROUND	1096.572	1092.925	1085.199	1081.188	1093.750	1095.661	1094.488	1091.310	1087.524	1087.570	1085.748	1082.570	1079.658	1076.487	1073.574	1071.051	1070.445	1072.524	1074.480	1070.052
STATION	11+900	11+925	11+950	11+975	12+000	12+025	12+050	12+075	12+100	12+125	12+150	12+175	12+200	12+225	12+250	12+275	12+300	12+325	12+350	12+375
HORIZONTAL ALIGNMENT	11+900-381 A=56.128 R=90 11+954-799 A=56.128 R=90 12+000-888 A=48.504 R=∞ 12+050-986 A=48.504 R=∞ 12+100-1083.117 R=55 12+150-1179.519 A=45.804 R=340.729 12+200-1275.921 A=45.804 R=340.729 12+250-1372.323 A=45.826 R=60 12+300-1468.725 A=45.826 R=60 12+350-1565.127 A=45.826 R=60 12+400-1661.529 A=45.826 R=60 12+450-1757.931 A=45.826 R=60 12+500-1854.333 A=45.826 R=60 12+550-1950.735 A=45.826 R=60 12+600-2047.137 A=45.826 R=60																			

PROJECT NAME	CLIENT	CONSULTANT	DWG TITLE	DWG NO.
THE FEASIBILITY STUDY ON THE CONSTRUCTION OF KATHMANDU - NAUBISE ALTERNATE ROAD IN THE KINGDOM OF NEPAL	JAPAN INTERNATIONAL COOPERATION AGENCY HIS MAJESTY'S GOVERNMENT OF NEPAL MINISTRY OF PHYSICAL PLANNING AND WORKS DEPARTMENT OF ROADS	 NIPPON KOEI CO., LTD. Consulting Engineers Tokyo, JAPAN	PLAN AND PROFILE STA.11+900 to STA.12+600	Hw-22




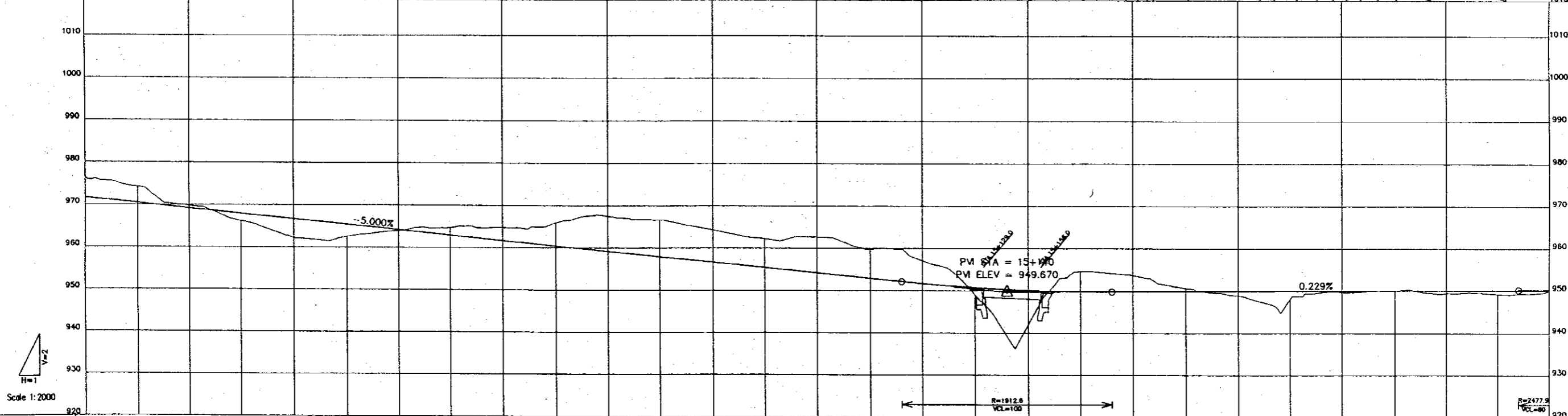
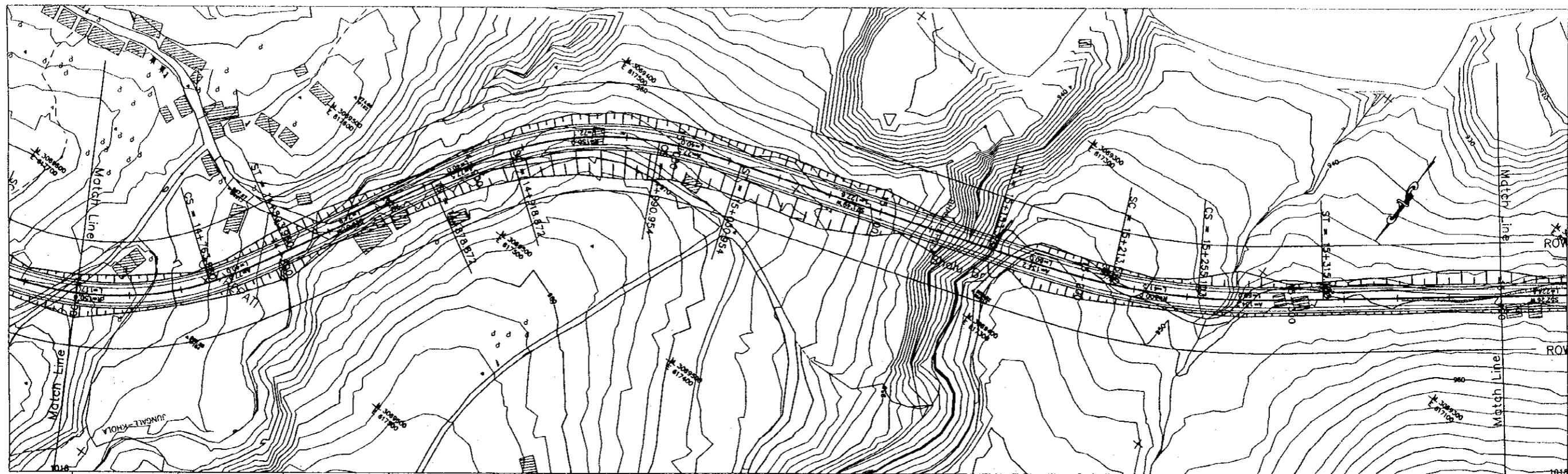
PROFILE																													
FINISHED GRADE	12+600	12+625	12+650	12+675	12+700	12+725	12+750	12+775	12+800	12+825	12+850	12+875	12+900	12+925	12+950	12+975	13+000	13+025	13+050	13+075	13+100	13+125	13+150	13+175	13+200	13+225	13+250	13+275	13+300
EXISTING GROUND	1085.851	1082.124	1059.519	1057.080	1055.280	1053.121	1054.519	1058.381	1054.477	1052.590	1049.955	1047.483	1043.868	1045.553	1043.718	1041.772	1041.205	1040.769	1045.355	1038.289	1044.889	1032.981	1022.585	1024.953	1034.377	1039.584	1037.732	1027.908	1022.760
STATION	12+600	12+625	12+650	12+675	12+700	12+725	12+750	12+775	12+800	12+825	12+850	12+875	12+900	12+925	12+950	12+975	13+000	13+025	13+050	13+075	13+100	13+125	13+150	13+175	13+200	13+225	13+250	13+275	13+300
HORIZONTAL ALIGNMENT																													

PROJECT NAME	CLIENT	CONSULTANT	DWG TITLE	DWG NO.
THE FEASIBILITY STUDY ON THE CONSTRUCTION OF KATHMANDU - NAUBISE ALTERNATE ROAD IN THE KINGDOM OF NEPAL	JAPAN INTERNATIONAL COOPERATION AGENCY HIS MAJESTY'S GOVERNMENT OF NEPAL MINISTRY OF PHYSICAL PLANNING AND WORKS DEPARTMENT OF ROADS	NIPPON KOEI CO., LTD. Consulting Engineers Tokyo, JAPAN	PLAN AND PROFILE STA.12+600 to STA.13+300	Hw-23




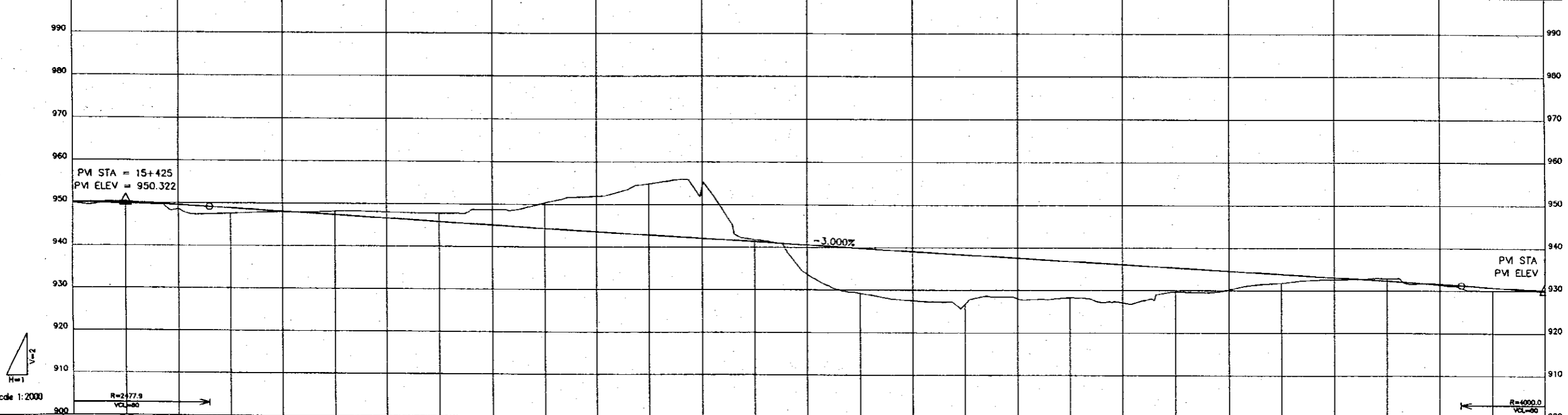
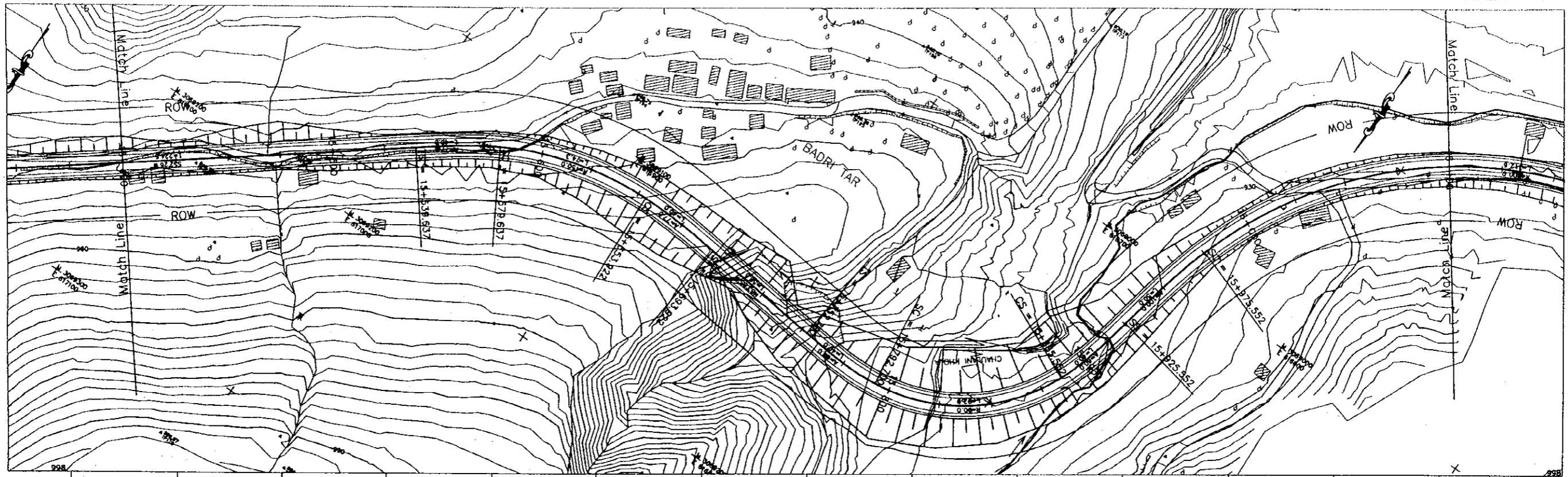
PROFILE	STATIONING																			
FINISHED GRADE	992.019	990.769	989.519	988.269	987.019	985.769	984.519	983.269	982.019	980.769	979.519	978.269	977.019	975.769	974.519	973.269	972.019	970.769	969.519	968.269
EXISTING GROUND	990.427	988.438	987.699	986.151	985.289	984.151	983.672	982.265	981.040	980.318	978.872	978.705	978.848	978.928	980.010	980.092	980.174	980.234	980.086	979.621
STATION	14+000	14+025	14+050	14+075	14+100	14+125	14+150	14+175	14+200	14+225	14+250	14+275	14+300	14+325	14+350	14+375	14+400	14+425	14+450	14+475
HORIZONTAL ALIGNMENT	<p> $R=150$ $R=252.3$ $R=150$ $R=252.3$ $R=150$ </p>																			

PROJECT NAME	CLIENT	CONSULTANT	DWG TITLE	DWG NO.
THE FEASIBILITY STUDY ON THE CONSTRUCTION OF KATHMANDU - NAUBISE ALTERNATE ROAD IN THE KINGDOM OF NEPAL	JAPAN INTERNATIONAL COOPERATION AGENCY HIS MAJESTY'S GOVERNMENT OF NEPAL MINISTRY OF PHYSICAL PLANNING AND WORKS DEPARTMENT OF ROADS	 NIPPON KOEI CO., LTD. Consulting Engineers Tokyo, JAPAN	PLAN AND PROFILE STA.14+000 to STA.14+700	Hw-25




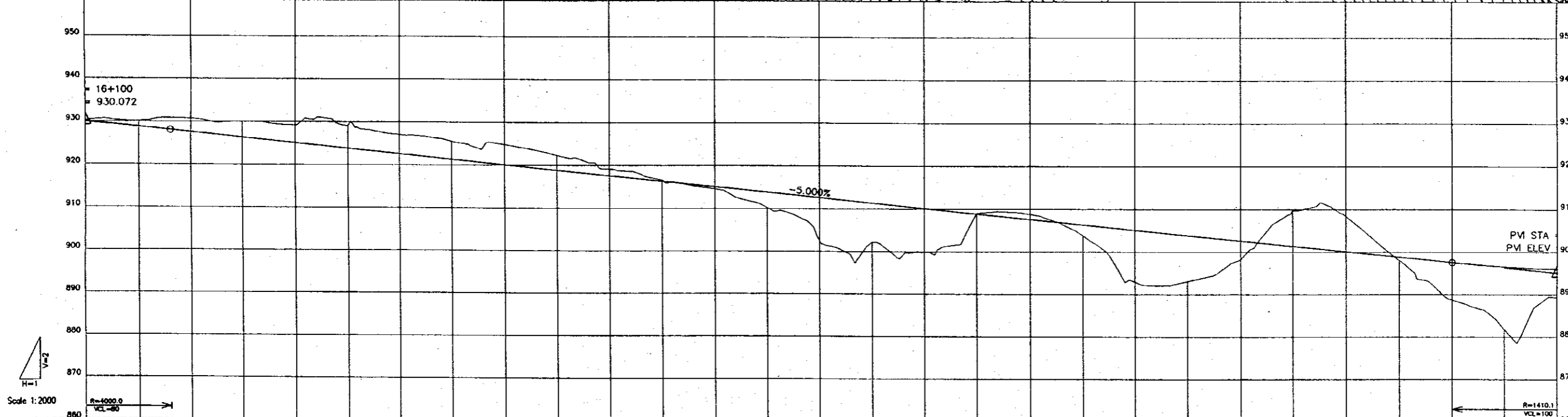
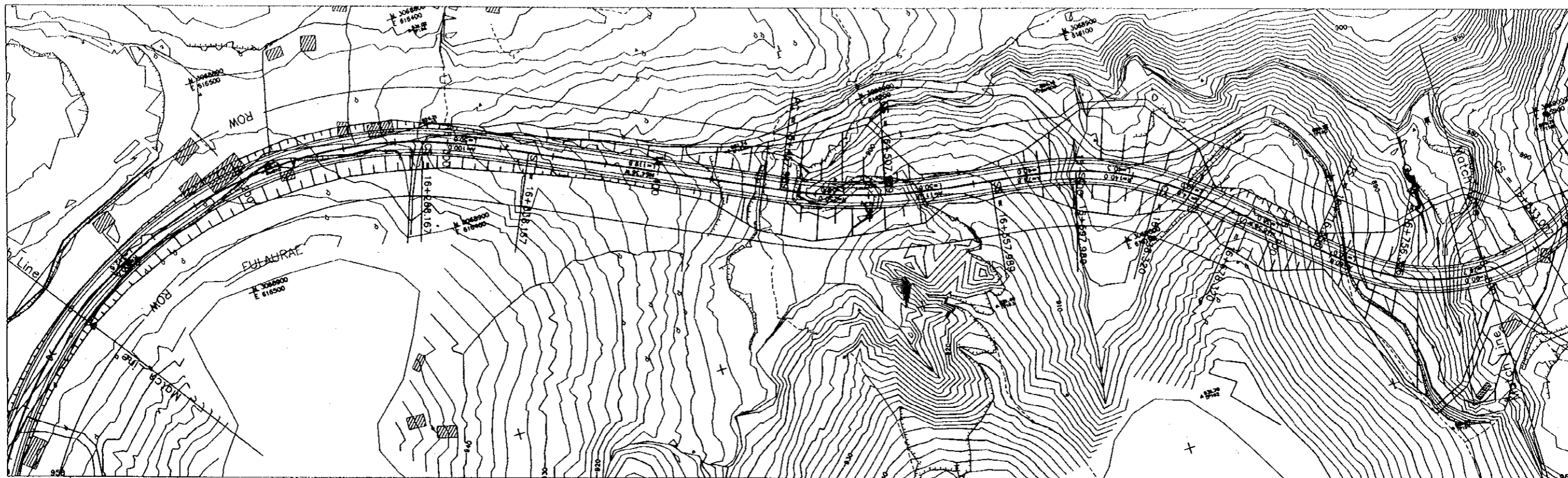
PROFILE	STATIONING																																							
FINISHED GRADE	14+700	14+725	14+750	14+775	14+800	14+825	14+850	14+875	14+900	14+925	14+950	14+975	15+000	15+025	15+050	15+075	15+100	15+125	15+150	15+175	15+200	15+225	15+250	15+275	15+300	15+325	15+350	15+375	15+400											
EXISTING GROUND	978.387	974.219	969.773	966.202	962.233	958.518	954.954	951.705	947.755	943.868	939.170	934.666	930.354	926.237	922.314	918.588	915.057	911.714	908.561	905.594	902.812	899.214	895.801	892.573	889.530	886.672	883.999	881.512	879.210	877.093										
STATION	14+700	14+725	14+750	14+775	14+800	14+825	14+850	14+875	14+900	14+925	14+950	14+975	15+000	15+025	15+050	15+075	15+100	15+125	15+150	15+175	15+200	15+225	15+250	15+275	15+300	15+325	15+350	15+375	15+400											
HORIZONTAL ALIGNMENT	R=150		14+783.980		A=77.460		R=∞		14+878.872		A=77.46		14+918.872		R=150		14+990.854		A=77.46		15+030.854		R=∞		15+153.570		A=134.184		15+213.570		R=300		15+255.103		A=134.184		15+315.103		R=∞	

PROJECT NAME	CLIENT	CONSULTANT	DWG TITLE	DWG NO.
THE FEASIBILITY STUDY ON THE CONSTRUCTION OF KATHMANDU - NAUBISE ALTERNATE ROAD IN THE KINGDOM OF NEPAL	JAPAN INTERNATIONAL COOPERATION AGENCY HIS MAJESTY'S GOVERNMENT OF NEPAL MINISTRY OF PHYSICAL PLANNING AND WORKS DEPARTMENT OF ROADS	 NIPPON KOEI CO., LTD. Consulting Engineers Tokyo, JAPAN	PLAN AND PROFILE STA.14+700 to STA.15+400	Hw-26




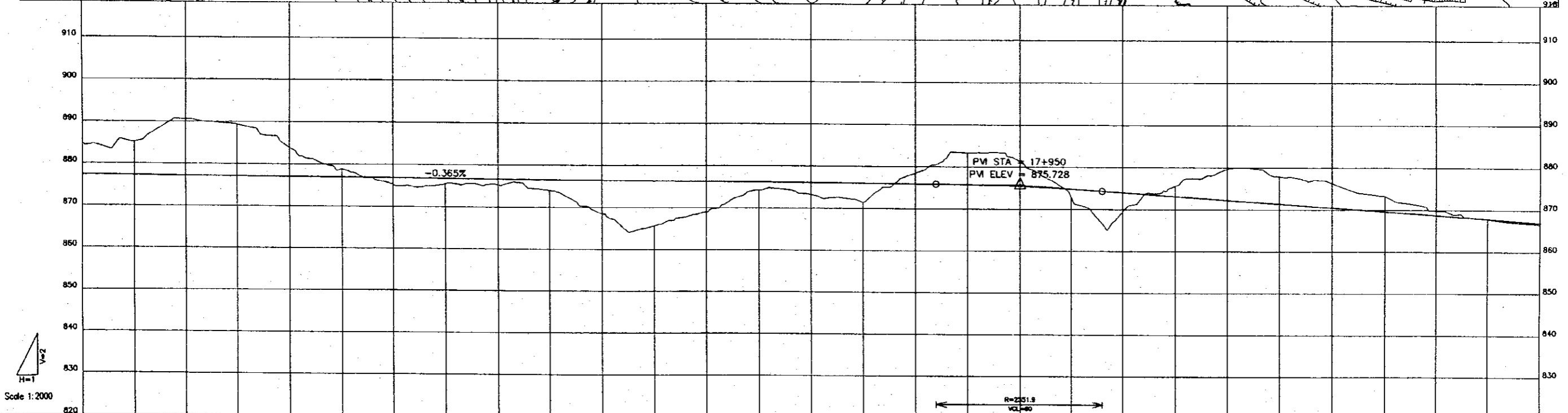
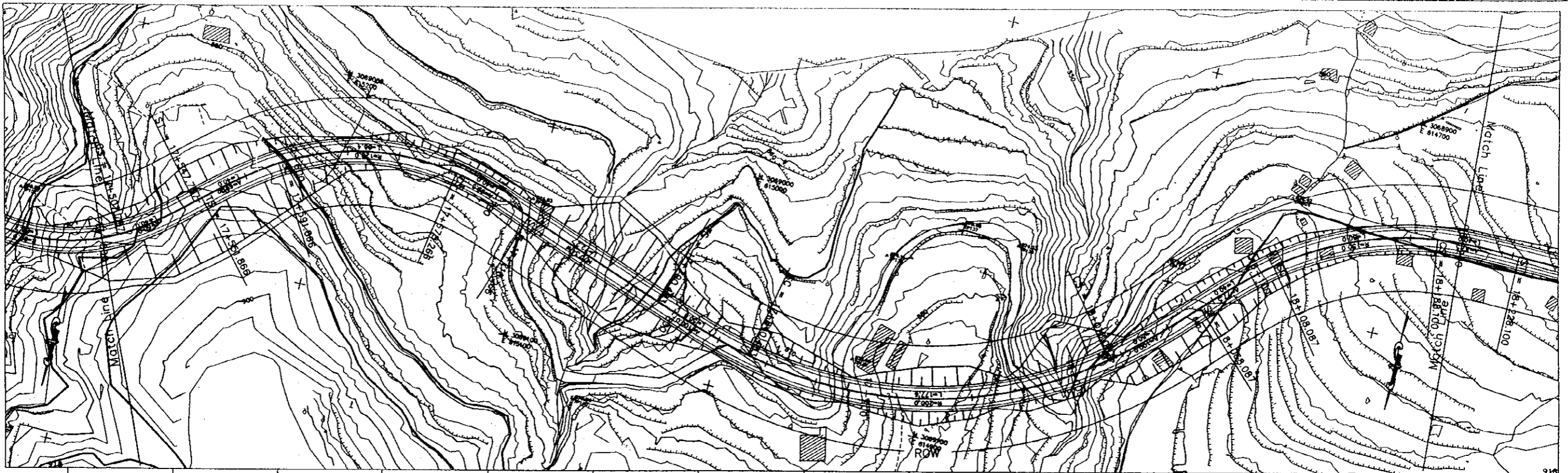
PROFILE	STATIONING																												
FINISHED GRADE	15+400	15+425	15+450	15+475	15+500	15+525	15+550	15+575	15+600	15+625	15+650	15+675	15+700	15+725	15+750	15+775	15+800	15+825	15+850	15+875	15+900	15+925	15+950	15+975	16+000	16+025	16+050	16+075	16+100
EXISTING GROUND	945.934	949.999	948.581	947.586	947.968	948.208	948.014	947.736	948.679	950.351	951.898	954.871	954.465	941.827	933.075	929.250	927.511	926.771	928.006	928.271	927.082	929.666	930.184	931.779	932.804	932.821	931.353	930.018	930.213
STATION	15+400	15+425	15+450	15+475	15+500	15+525	15+550	15+575	15+600	15+625	15+650	15+675	15+700	15+725	15+750	15+775	15+800	15+825	15+850	15+875	15+900	15+925	15+950	15+975	16+000	16+025	16+050	16+075	16+100
HORIZONTAL ALIGNMENT	<p> $R=∞$ $15+536.637$ $A=77.460$ $R=150$ $15+653.922$ $A=77.460$ $15+683.922$ $R=∞$ $15+752.700$ $A=80$ $15+792.700$ $R=30$ $15+885.552$ $A=90$ $15+925.552$ $A=100$ $15+975.552$ $R=200$ </p>																												

PROJECT NAME	CLIENT	CONSULTANT	DWG TITLE	DWG NO.
THE FEASIBILITY STUDY ON THE CONSTRUCTION OF KATHMANDU - NAUBISE ALTERNATE ROAD IN THE KINGDOM OF NEPAL	JAPAN INTERNATIONAL COOPERATION AGENCY HIS MAJESTY'S GOVERNMENT OF NEPAL MINISTRY OF PHYSICAL PLANNING AND WORKS DEPARTMENT OF ROADS	 NIPPON KOEI CO., LTD. Consulting Engineers Tokyo, JAPAN	PLAN AND PROFILE STA.15+400 to STA.16+100	Hw-27



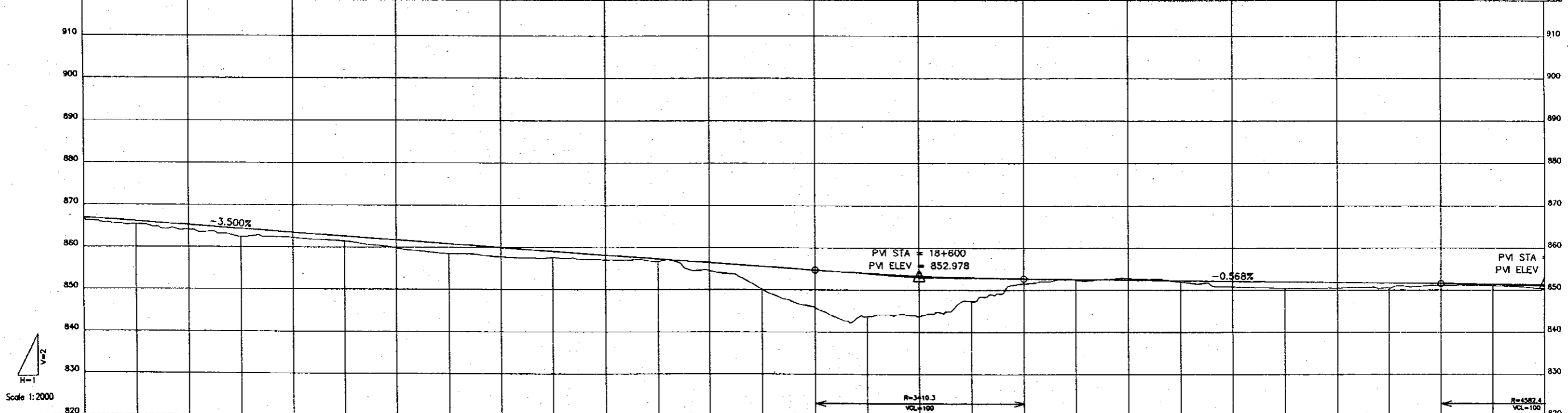
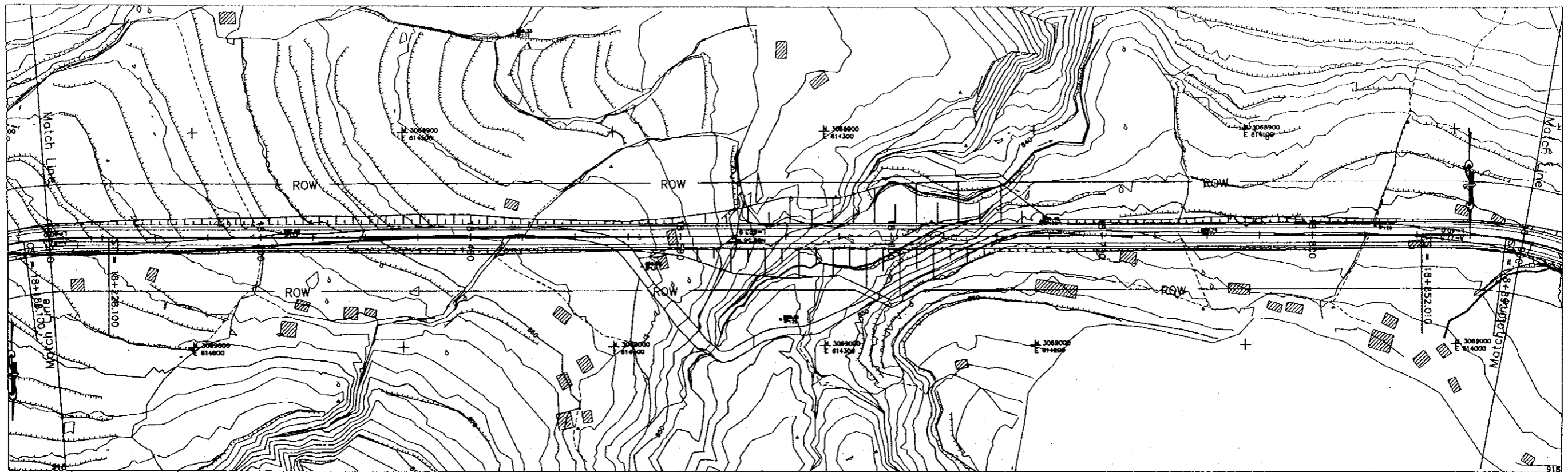
PROFILE	16+100 to 16+800																												
FINISHED GRADE	930.072	928.793	927.572	926.322	925.072	923.822	922.572	921.322	920.072	918.822	917.572	916.322	915.072	913.822	912.572	911.322	910.072	908.822	907.572	906.322	905.072	903.822	902.572	901.322	900.072	898.822	897.572	896.322	895.072
EXISTING GROUND	930.213	930.127	930.082	930.006	929.208	929.082	929.022	927.027	925.521	924.801	922.283	919.156	916.804	914.555	902.349	902.093	899.845	909.007	908.753	903.781	892.907	893.085	898.305	909.768	906.308	898.045	888.756	881.814	889.221
STATION	16+100	16+125	16+150	16+175	16+200	16+225	16+250	16+275	16+300	16+325	16+350	16+375	16+400	16+425	16+450	16+475	16+500	16+525	16+550	16+575	16+600	16+625	16+650	16+675	16+700	16+725	16+750	16+775	16+800
HORIZONTAL ALIGNMENT	R=200 16+288.167 A=100 16+336.167 R=∞ 16+437.989 R=250 16+507.989 A=111.803 16+537.989 A=74.811 16+587.989 R=140 16+636.320 A=74.833 16+678.320 R=∞ 16+718.356 A=60 16+756.356 R=90																												

PROJECT NAME	CLIENT	CONSULTANT	DWG TITLE	DWG NO.
THE FEASIBILITY STUDY ON THE CONSTRUCTION OF KATHMANDU - NAUBISE ALTERNATE ROAD IN THE KINGDOM OF NEPAL	JAPAN INTERNATIONAL COOPERATION AGENCY HIS MAJESTY'S GOVERNMENT OF NEPAL MINISTRY OF PHYSICAL PLANNING AND WORKS DEPARTMENT OF ROADS	 NIPPON KOEI CO., LTD. Consulting Engineers Tokyo, JAPAN	PLAN AND PROFILE STA.16+100 to STA.16+800	Hw-28




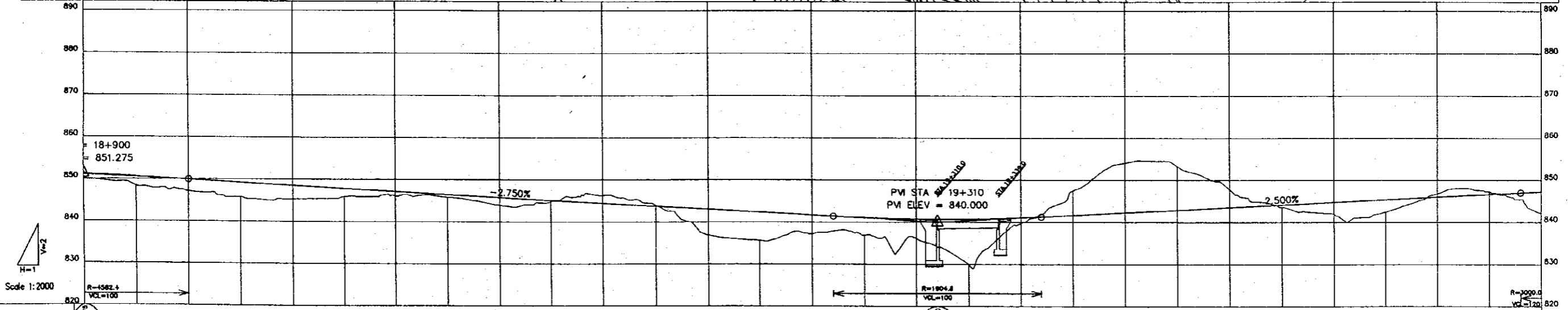
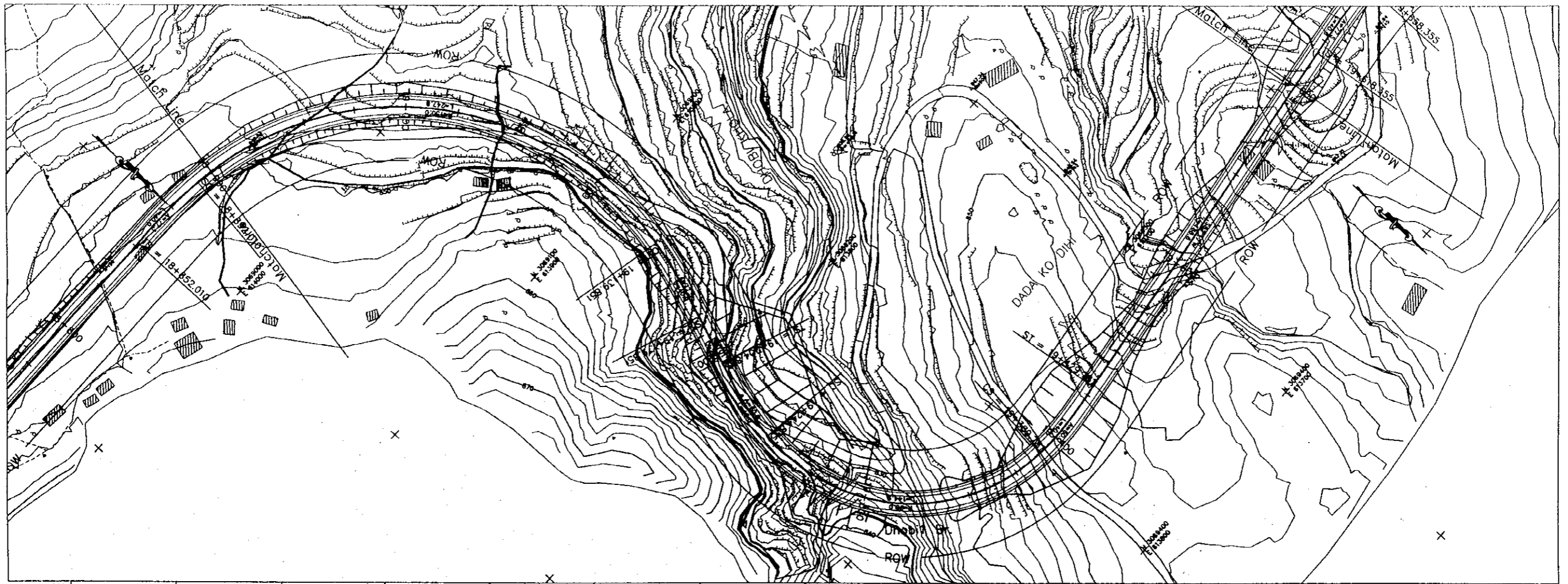
PROFILE	Stationing: 17+500 to 18+200																			
FINISHED GRADE	877.371	877.280	877.189	877.097	877.006	876.915	876.823	876.732	876.641	876.550	876.458	876.367	876.276	876.185	876.093	875.979	875.867	875.755	875.643	875.531
EXISTING GROUND	884.772	885.130	880.541	889.370	883.876	878.634	875.227	876.823	875.459	876.732	875.284	876.641	874.021	876.590	868.470	876.458	865.644	876.367	868.932	876.276
STATION	17+500	17+525	17+550	17+575	17+600	17+625	17+650	17+675	17+700	17+725	17+750	17+775	17+800	17+825	17+850	17+875	17+900	17+925	17+950	17+975
HORIZONTAL ALIGNMENT	Horizontal curve data: R=307.7, A=80, 17+347.787; R=551.896, A=89.282, 17+581.886; R=120, 17+678.286; A=89.282, 17+718.286; R=100, 17+790.483; A=100, 17+840.483; R=200, 18+018.087; A=100, 18+068.087, 18+108.087; R=20, 18+108.087; 18+200, 866.491, 866.978																			

PROJECT NAME THE FEASIBILITY STUDY ON THE CONSTRUCTION OF KATHMANDU - NAUBISE ALTERNATE ROAD IN THE KINGDOM OF NEPAL	CLIENT JAPAN INTERNATIONAL COOPERATION AGENCY HIS MAJESTY'S GOVERNMENT OF NEPAL MINISTRY OF PHYSICAL PLANNING AND WORKS DEPARTMENT OF ROADS	CONSULTANT NIPPON KOEI CO., LTD. Consulting Engineers Tokyo, JAPAN	DWG TITLE PLAN AND PROFILE STA.17+500 to STA.18+200	DWG NO. Hw-30
--	--	--	--	-------------------------



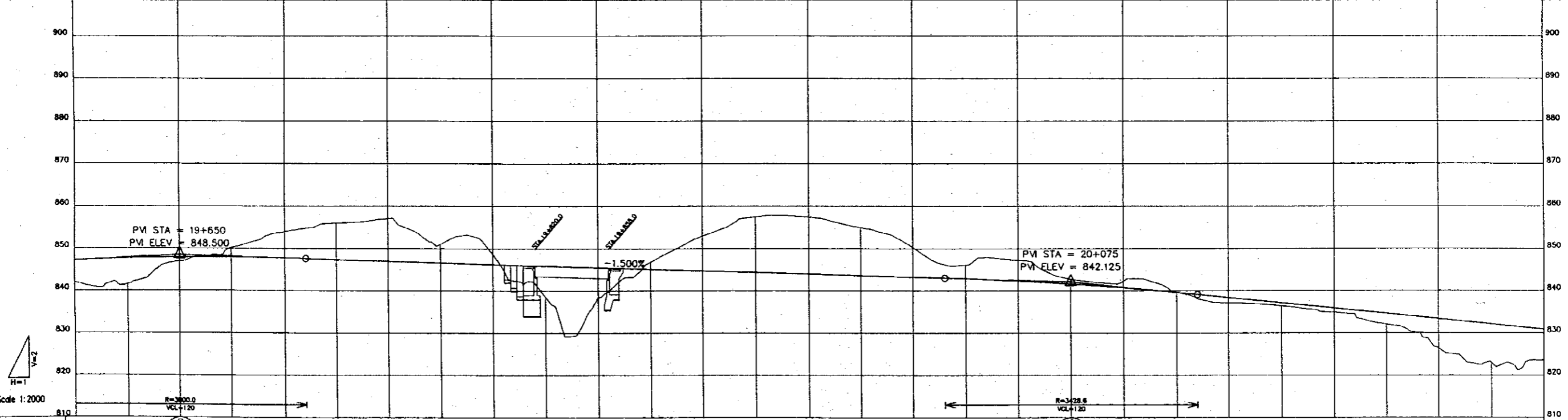
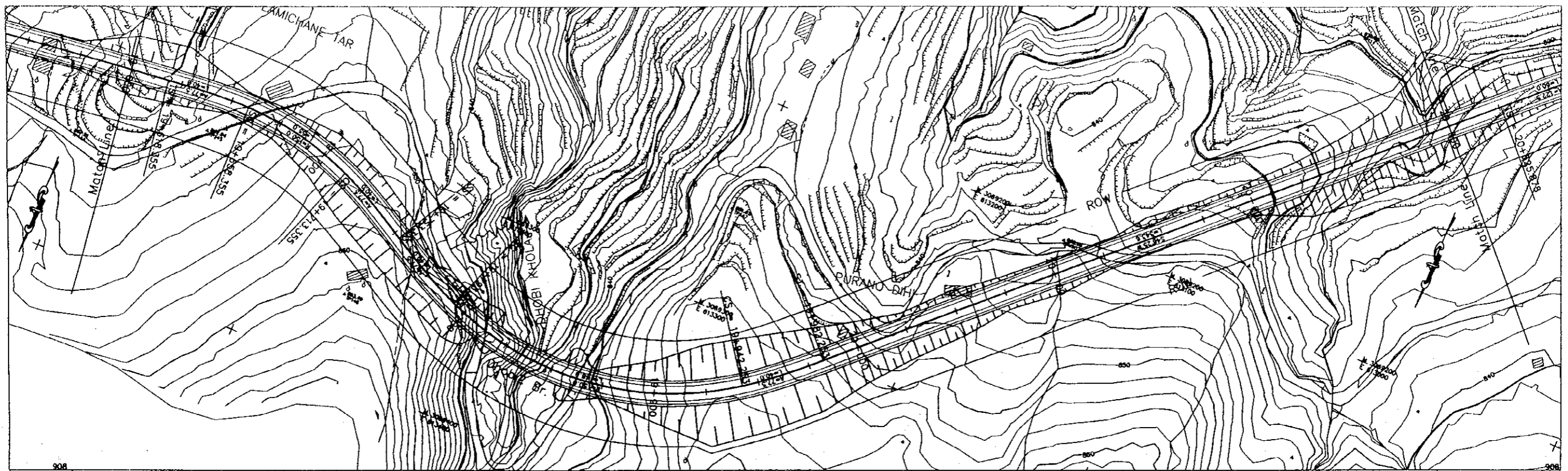
PROFILE	Stationing: 18+200 to 18+900																												
FINISHED GRADE	886.978	886.103	885.228	884.353	883.478	882.603	881.728	880.853	879.978	879.103	878.228	877.353	876.478	875.603	874.728	873.853	872.978	872.103	871.228	870.353									
EXISTING GROUND	886.491	885.335	884.081	882.827	881.573	880.319	879.065	877.811	876.557	875.303	874.049	872.795	871.541	870.287	869.033	867.779	866.525	865.271	864.017	862.763									
STATION	18+200	18+225	18+250	18+275	18+300	18+325	18+350	18+375	18+400	18+425	18+450	18+475	18+500	18+525	18+550	18+575	18+600	18+625	18+650	18+675	18+700	18+725	18+750	18+775	18+800	18+825	18+850	18+875	18+900
HORIZONTAL ALIGNMENT	A=77.440 18+228.100																R=348.3 VCL=100		R=4582.4 VCL=100										

PROJECT NAME	CLIENT	CONSULTANT	DWG TITLE	DWG NO.
THE FEASIBILITY STUDY ON THE CONSTRUCTION OF KATHMANDU - NAUBISE ALTERNATE ROAD IN THE KINGDOM OF NEPAL	JAPAN INTERNATIONAL COOPERATION AGENCY HIS MAJESTY'S GOVERNMENT OF NEPAL MINISTRY OF PHYSICAL PLANNING AND WORKS DEPARTMENT OF ROADS	 NIPPON KOEI CO., LTD. Consulting Engineers Tokyo, JAPAN	PLAN AND PROFILE STA.18+200 to STA.18+900	Hw-31



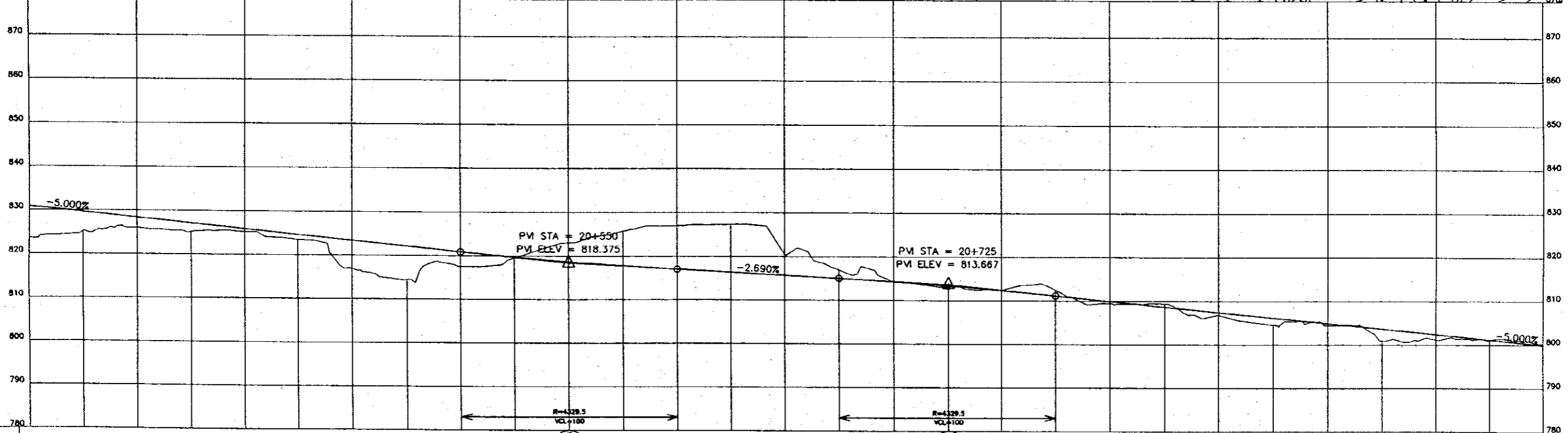
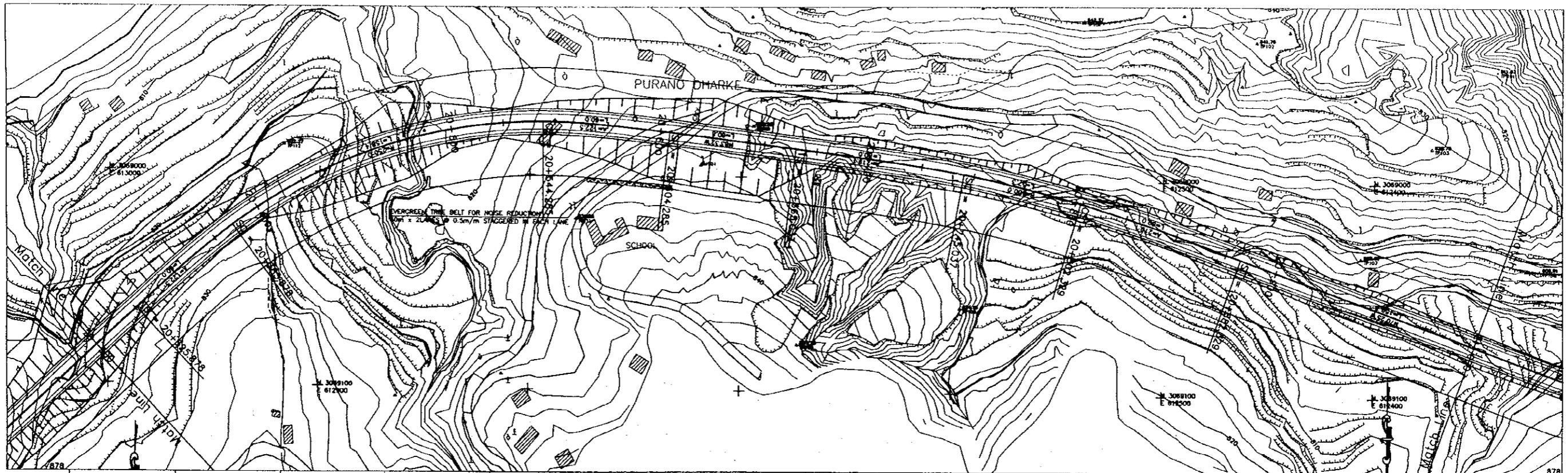
PROFILE																				
FINISHED GRADE	851.002	850.519	849.900	849.213	848.525	847.838	847.150	846.463	845.775	845.088	844.400	843.713	843.025	842.338	841.650	840.962	840.275	841.588	842.900	844.213
EXISTING GROUND	850.161	848.431	847.078	845.743	844.288	842.845	841.398	840.028	843.911	844.754	846.225	847.713	849.202	850.697	852.190	853.682	855.175	856.668	858.161	859.654
STATION	18+900	18+925	18+950	18+975	19+000	19+025	19+050	19+075	19+100	19+125	19+150	19+175	19+200	19+225	19+250	19+275	19+300	19+325	19+350	19+375
HORIZONTAL ALIGNMENT																				

PROJECT NAME	CLIENT	CONSULTANT	DWG TITLE	DWG NO.
THE FEASIBILITY STUDY ON THE CONSTRUCTION OF KATHMANDU - NAUBISE ALTERNATE ROAD IN THE KINGDOM OF NEPAL	JAPAN INTERNATIONAL COOPERATION AGENCY HIS MAJESTY'S GOVERNMENT OF NEPAL MINISTRY OF PHYSICAL PLANNING AND WORKS DEPARTMENT OF ROADS	NIPPON KOEI CO., LTD. Consulting Engineers Tokyo, JAPAN	PLAN AND PROFILE STA.18+900 to STA.19+600	Hw-32



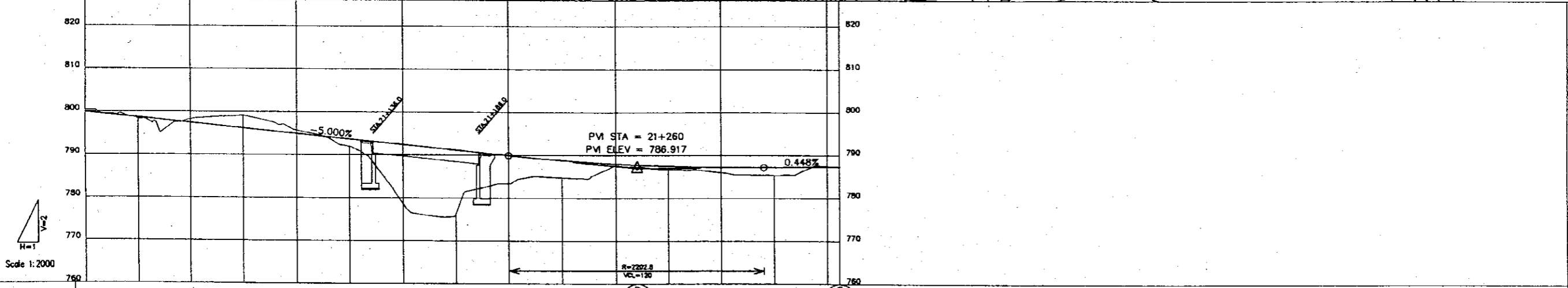
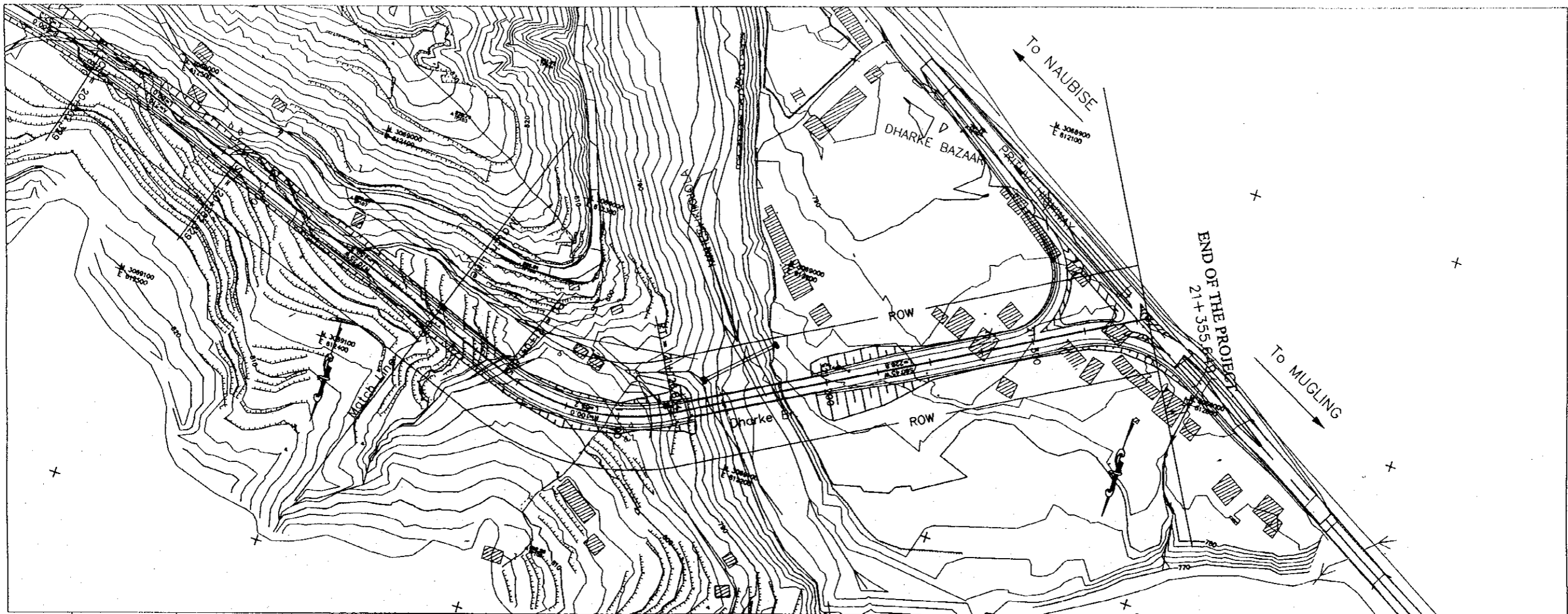
PROFILE																				
FINISHED GRADE	847.233	847.871	847.900	847.921	847.733	847.375	847.000	846.625	846.250	845.875	845.500	845.125	844.750	844.375	844.000	843.625	843.250	842.880	842.505	842.125
EXISTING GROUND	842.038	841.585	846.887	850.212	853.938	855.887	857.075	851.043	848.618	838.541	838.460	846.820	852.948	857.512	857.422	854.947	850.276	846.123	847.283	842.896
STATION	19+500	19+625	19+650	19+675	19+700	19+725	19+750	19+775	19+800	19+825	19+850	19+875	19+900	19+925	19+950	19+975	20+000	20+025	20+050	20+075
HORIZONTAL ALIGNMENT																				

PROJECT NAME	CLIENT	CONSULTANT	DWG TITLE	DWG NO.
THE FEASIBILITY STUDY ON THE CONSTRUCTION OF KATHMANDU - NAUBISE ALTERNATE ROAD IN THE KINGDOM OF NEPAL	JAPAN INTERNATIONAL COOPERATION AGENCY HIS MAJESTY'S GOVERNMENT OF NEPAL MINISTRY OF PHYSICAL PLANNING AND WORKS DEPARTMENT OF ROADS	NIPPON KOEI CO., LTD. Consulting Engineers Tokyo, JAPAN	PLAN AND PROFILE STA.19+600 to STA.20+300	Hw-33



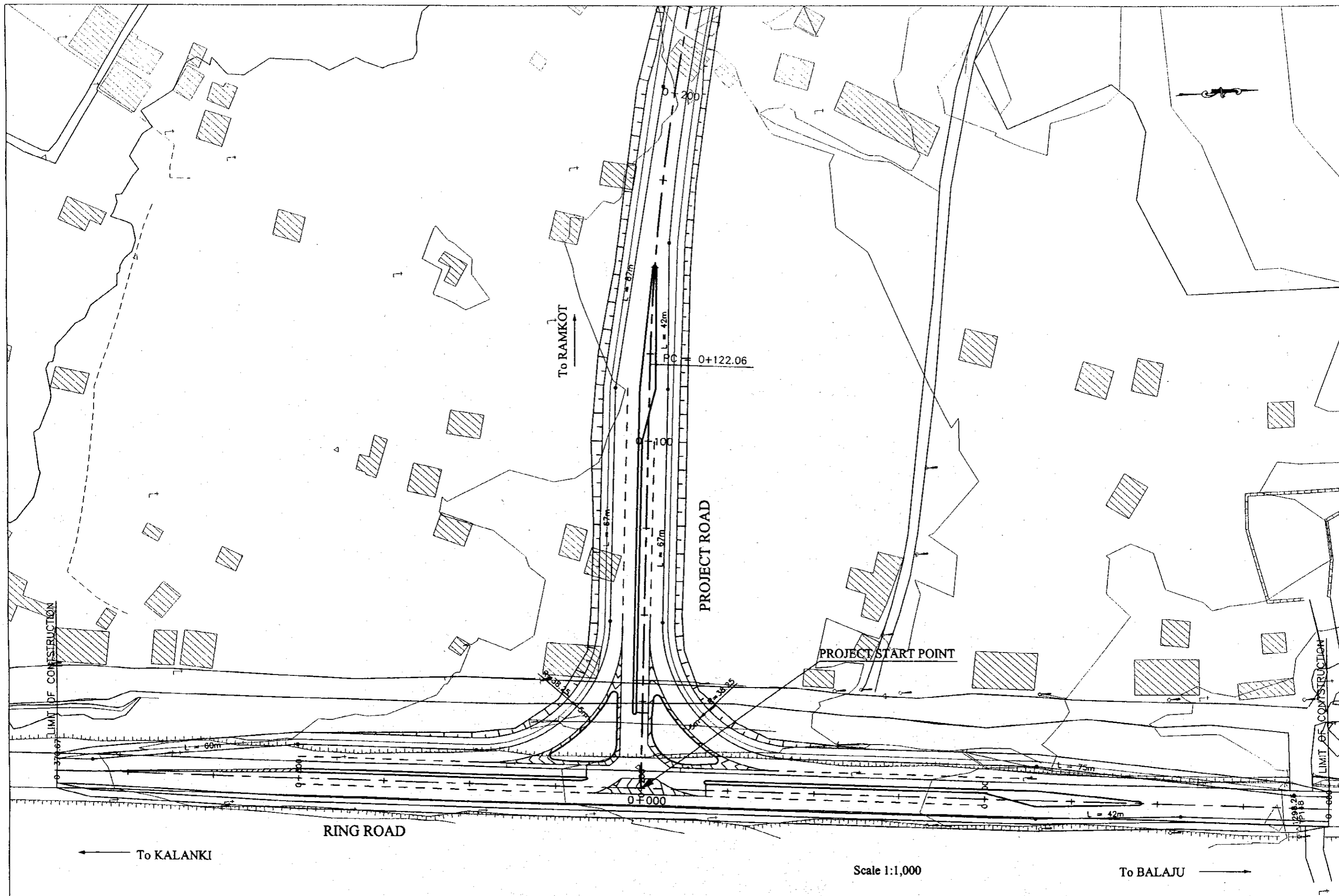
PROFILE	Stationing: 20+300 to 21+000																			
FINISHED GRADE	830.875	829.625	828.375	827.125	825.875	824.625	823.375	822.125	820.875	819.627	818.375	817.125	815.875	814.627	813.375	812.125	810.875	809.627	808.375	807.125
EXISTING GROUND	823.577	825.188	826.004	825.125	825.207	823.516	818.887	814.447	817.522	819.517	823.006	825.882	826.856	827.283	820.434	816.952	814.220	809.415	809.342	806.790
STATION	20+300	20+315	20+350	20+375	20+400	20+425	20+450	20+475	20+500	20+525	20+550	20+575	20+600	20+625	20+650	20+675	20+700	20+725	20+750	20+775
HORIZONTAL ALIGNMENT	$R=20+325.878$ $A=122.474$ $R=20+385.878$ $R=250$ $R=344.285$ $A=122.474$ $R=404.385$ $R=$ $R=685.037$ $A=219.089$ $R=745.037$ $R=800$ $R=802.329$ $A=219.089$ $R=882.329$ $R=$																			

PROJECT NAME	CLIENT	CONSULTANT	DWG TITLE	DWG NO.
THE FEASIBILITY STUDY ON THE CONSTRUCTION OF KATHMANDU - NAUBISE ALTERNATE ROAD IN THE KINGDOM OF NEPAL	JAPAN INTERNATIONAL COOPERATION AGENCY HIS MAJESTY'S GOVERNMENT OF NEPAL MINISTRY OF PHYSICAL PLANNING AND WORKS DEPARTMENT OF ROADS	NIPPON KOEI CO., LTD. Consulting Engineers Tokyo, JAPAN	PLAN AND PROFILE STA.20+300 to STA.21+000	Hw-34




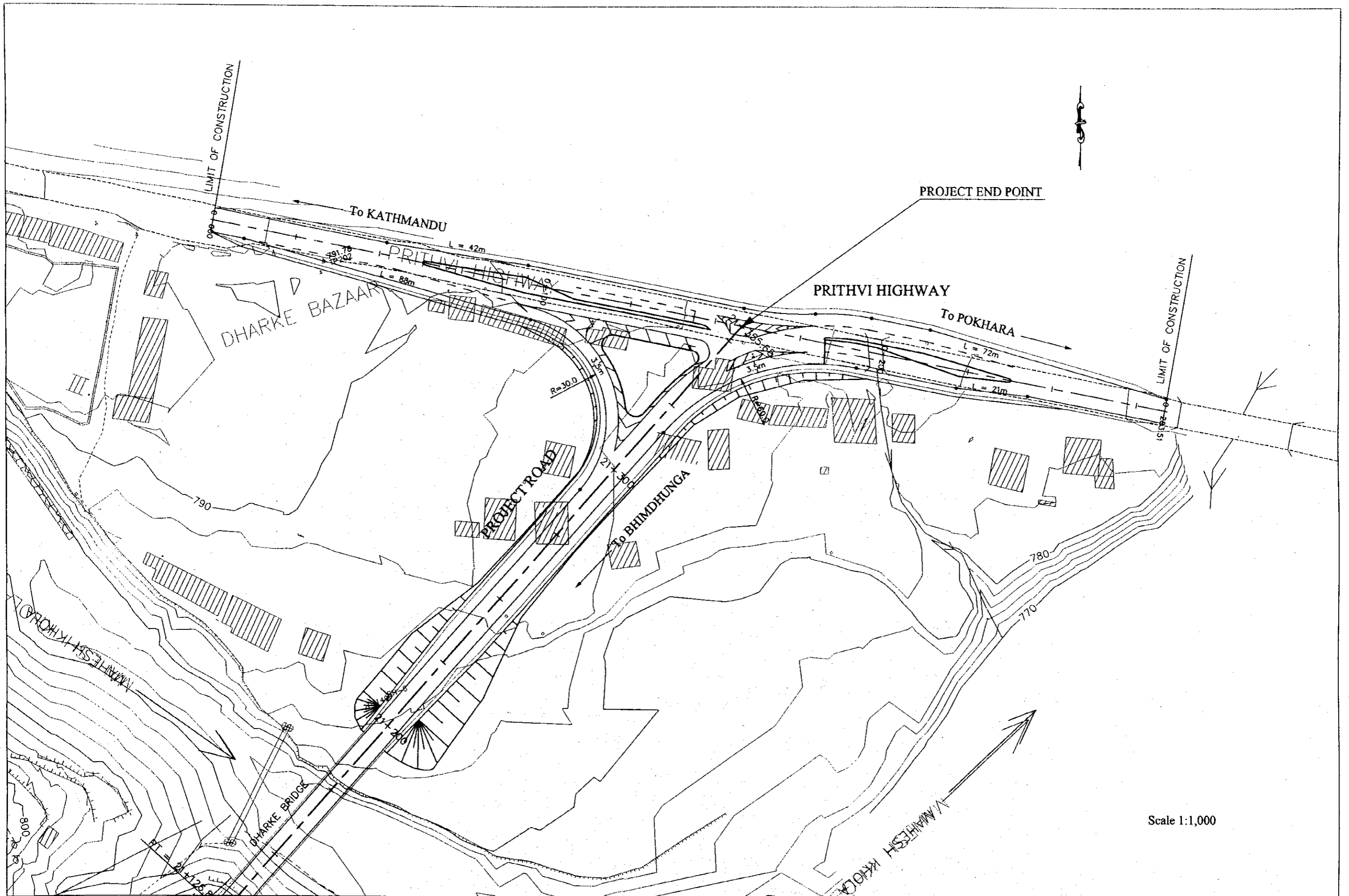
PROFILE	21+000 to 21+355.649														
FINISHED GRADE	798.917	798.657	797.417	796.187	794.917	793.667	792.417	791.167	789.917	788.609	787.344	786.087	784.837	783.587	782.337
EXISTING GROUND	800.332	798.316	796.259	794.096	791.851	789.554	787.249	784.949	782.654	780.354	778.054	775.754	773.454	771.154	768.854
STATION	21+000	21+025	21+050	21+075	21+100	21+125	21+150	21+175	21+200	21+225	21+250	21+275	21+300	21+325	21+350
HORIZONTAL ALIGNMENT	21+041.615 to 21+355.649														

PROJECT NAME	CLIENT	CONSULTANT	DWG TITLE	DWG NO.
THE FEASIBILITY STUDY ON THE CONSTRUCTION OF KATHMANDU - NAUBISE ALTERNATE ROAD IN THE KINGDOM OF NEPAL	JAPAN INTERNATIONAL COOPERATION AGENCY HIS MAJESTY'S GOVERNMENT OF NEPAL MINISTRY OF PHYSICAL PLANNING AND WORKS DEPARTMENT OF ROADS	NIPPON KOEI CO., LTD. Consulting Engineers Tokyo, JAPAN	PLAN AND PROFILE STA.21+000 to STA.21+355.649	Hw-35




Scale 1:1,000

PROJECT NAME	CLIENT	CONSULTANT	DWG TITLE	DWG NO.
THE FEASIBILITY STUDY ON THE CONSTRUCTION OF KATHMANDU - NAUBISE ALTERNATE ROAD IN THE KINGDOM OF NEPAL	JAPAN INTERNATIONAL COOPERATION AGENCY HIS MAJESTY'S GOVERNMENT OF NEPAL MINISTRY OF PHYSICAL PLANNING AND WORKS DEPARTMENT OF ROADS	 NIPPON KOEI CO., LTD. Consulting Engineers Tokyo, JAPAN	INTERSECTION (1/2) Intersection at Ring Road	Hw-36



Scale 1:1,000

PROJECT NAME	CLIENT	CONSULTANT	DWG TITLE	DWG NO.
THE FEASIBILITY STUDY ON THE CONSTRUCTION OF KATHMANDU - NAUBISE ALTERNATE ROAD IN THE KINGDOM OF NEPAL	JAPAN INTERNATIONAL COOPERATION AGENCY HIS MAJESTY'S GOVERNMENT OF NEPAL MINISTRY OF PHYSICAL PLANNING AND WORKS DEPARTMENT OF ROADS	 NIPPON KOEI CO., LTD. Consulting Engineers Tokyo, JAPAN	INTERSECTION (2/2) Intersection at Ring Road	Hw-37