

JAPAN INTERNATIONAL COOPERATION AGENCY (JICA)

HIS MAJESTY S GOVERNMENT OF NEPAL  
MINISTRY OF PHYSICAL PLANNING AND WORKS  
DEPARTMENT OF ROADS

THE FEASIBILITY STUDY  
ON  
THE CONSTRUCTION  
OF  
KATHMANDU-NAUBISE ALTERNATE ROAD  
IN  
THE KINGDOM OF NEPAL



FINAL REPORT  
VOLUME II: DRAWINGS

JICA LIBRARY



J1164136(2)

MARCH 2001


NIPPON KOEI CO., LTD.

SSF
JR
01-30

RY

# TABLE OF CONTENTS

DWG NO.	TITLE
<b>Highway</b>	
Hw-1~4	Typical Cross Section
Hw-5~35	Plan and Profile
Hw-36,37	Intersection
<b>Bridge &amp; Culvert</b>	
Bc-1~10	General View
Bc-11	Type of Culvert
Bc-12,13	Layout of Culvert
<b>Tunnel</b>	
Tn-1	General View of Tunnel
Tn-2	Geological Profile of Tunnel
Tn-3,4,5	Typical Cross Section of Tunnel
Tn-6,7,8	Supporting System
Tn-9,10	General Layout of Portal
Tn-11,12	Plan and Elevation of Portal
Tn-13	Arrangement of Tunnel Facility
Tn-14	Lighting System

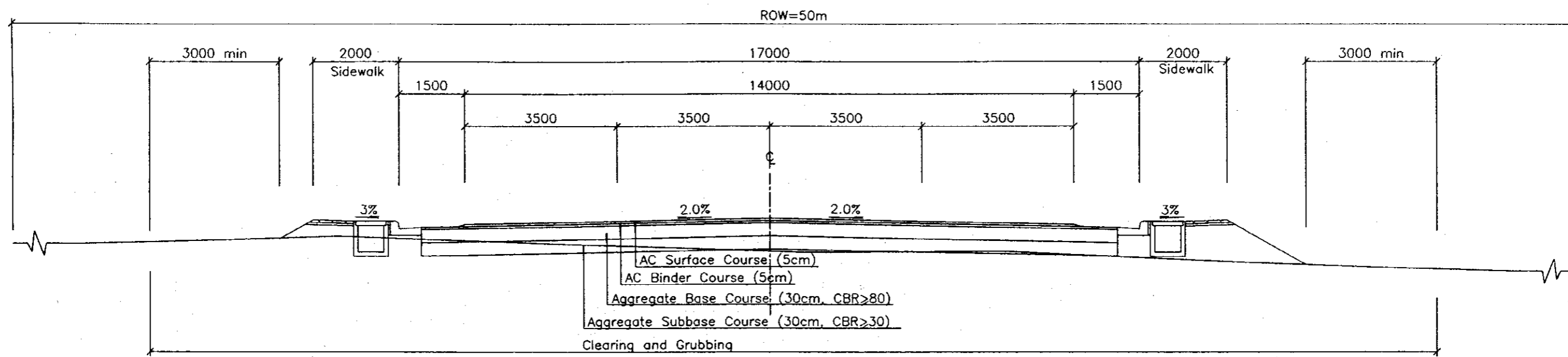
PROJECT NAME	CLIENT	CONSULTANT	DWG TITLE	DWG NO.
THE FEASIBILITY STUDY ON THE CONSTRUCTION OF KATHMANDU - NAUBISE ALTERNATE ROAD IN THE KINGDOM OF NEPAL	JAPAN INTERNATIONAL COOPERATION AGENCY HIS MAJESTY'S GOVERNMENT OF NEPAL MINISTRY OF PHYSICAL PLANNING AND WORKS DEPARTMENT OF ROADS	 NIPPON KOEI CO., LTD. Consulting Engineers Tokyo, JAPAN	Table of Contents	



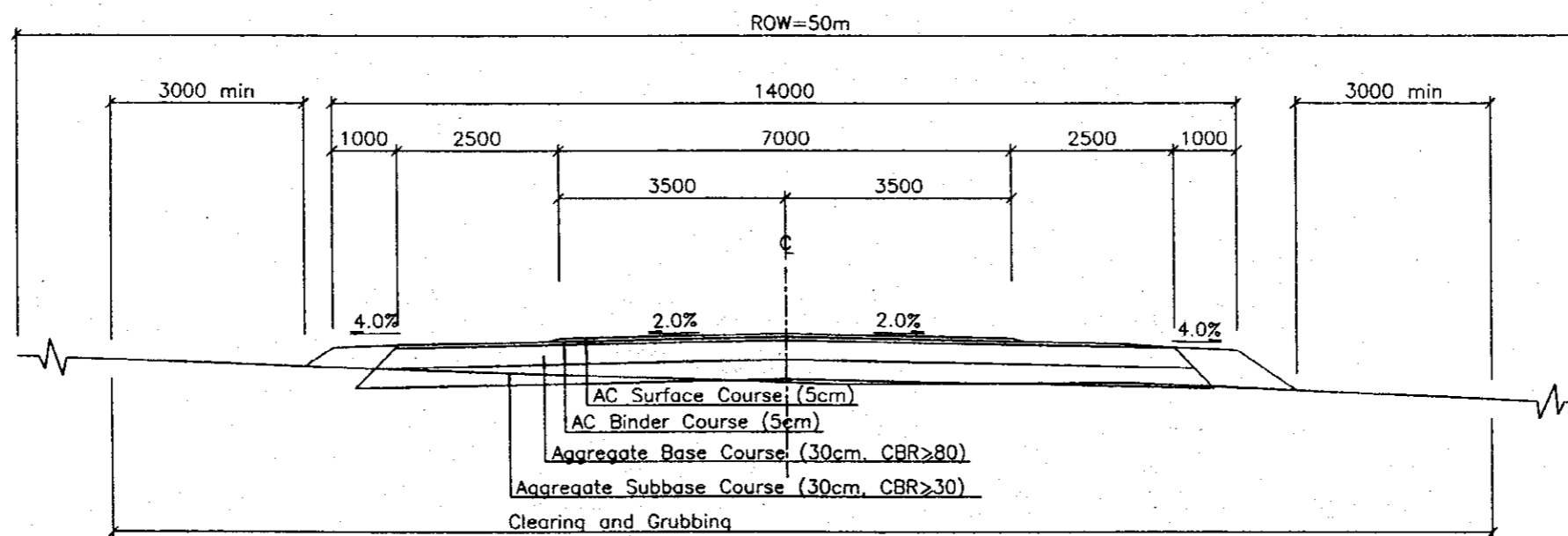
1164136[2]

***HIGHWAY***


Scale 1:100



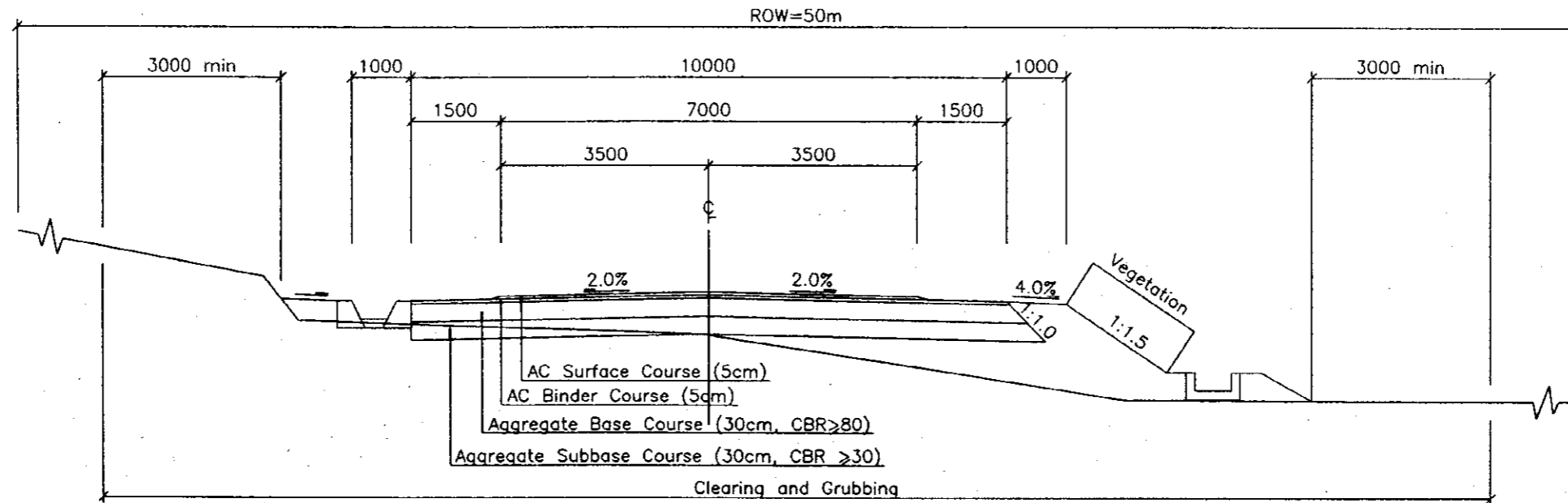
TYPE A - INTERSECTIONS AT RINGROAD AND DHARKE  
(SIDEWALK NOT INCLUDED AT DHARKE)



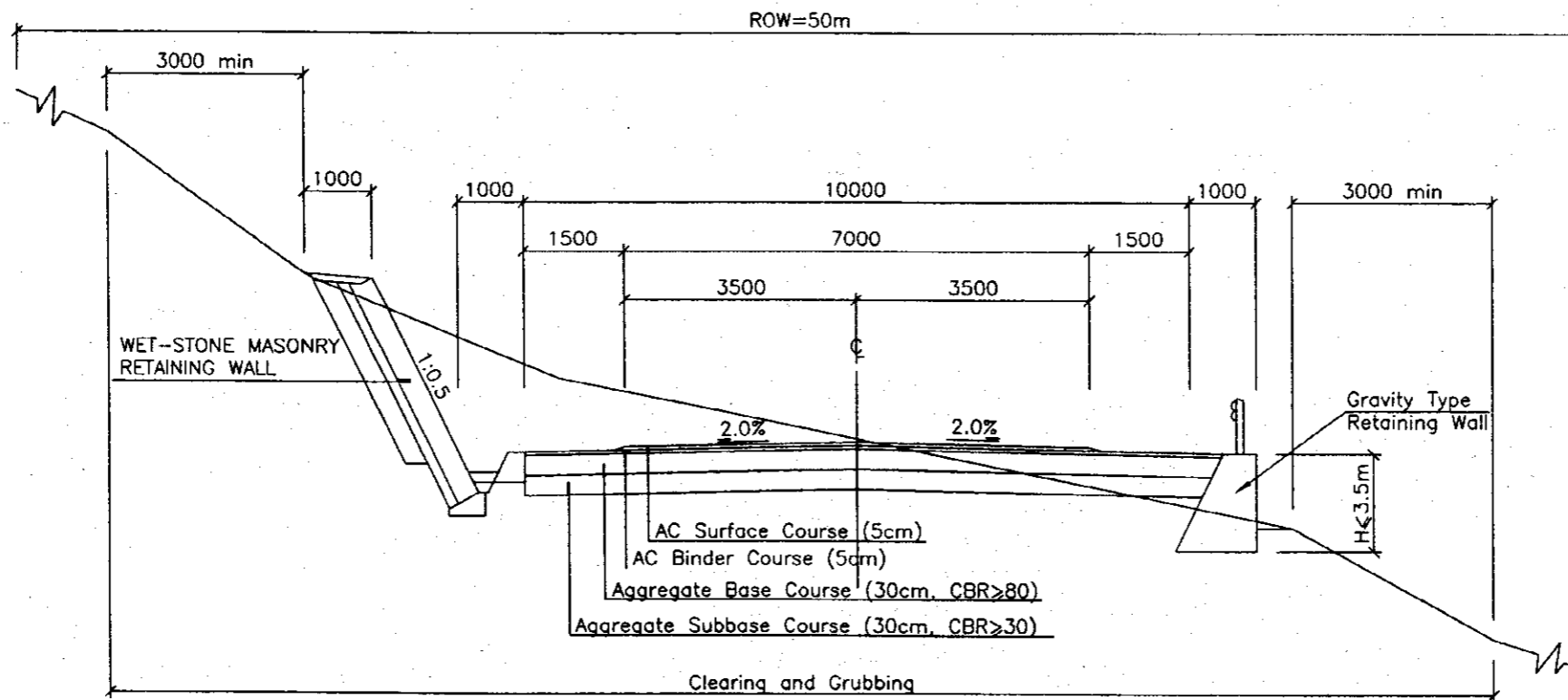
TYPE B - URBAN AREA  
(0+200 to 1+000)  
(21+200 to 21+355)

PROJECT NAME	CLIENT	CONSULTANT	DWG TITLE	DWG NO.
THE FEASIBILITY STUDY ON THE CONSTRUCTION OF KATHMANDU - NAUBISE ALTERNATE ROAD IN THE KINGDOM OF NEPAL	JAPAN INTERNATIONAL COOPERATION AGENCY HIS MAJESTY'S GOVERNMENT OF NEPAL MINISTRY OF PHYSICAL PLANNING AND WORKS DEPARTMENT OF ROADS	 NIPPON KOEI CO., LTD. Consulting Engineers Tokyo, JAPAN	Typical Cross Sections (1/4)	Hw-1


Scale 1:100



TYPE C - ROLLING/PLAIN TERRAIN

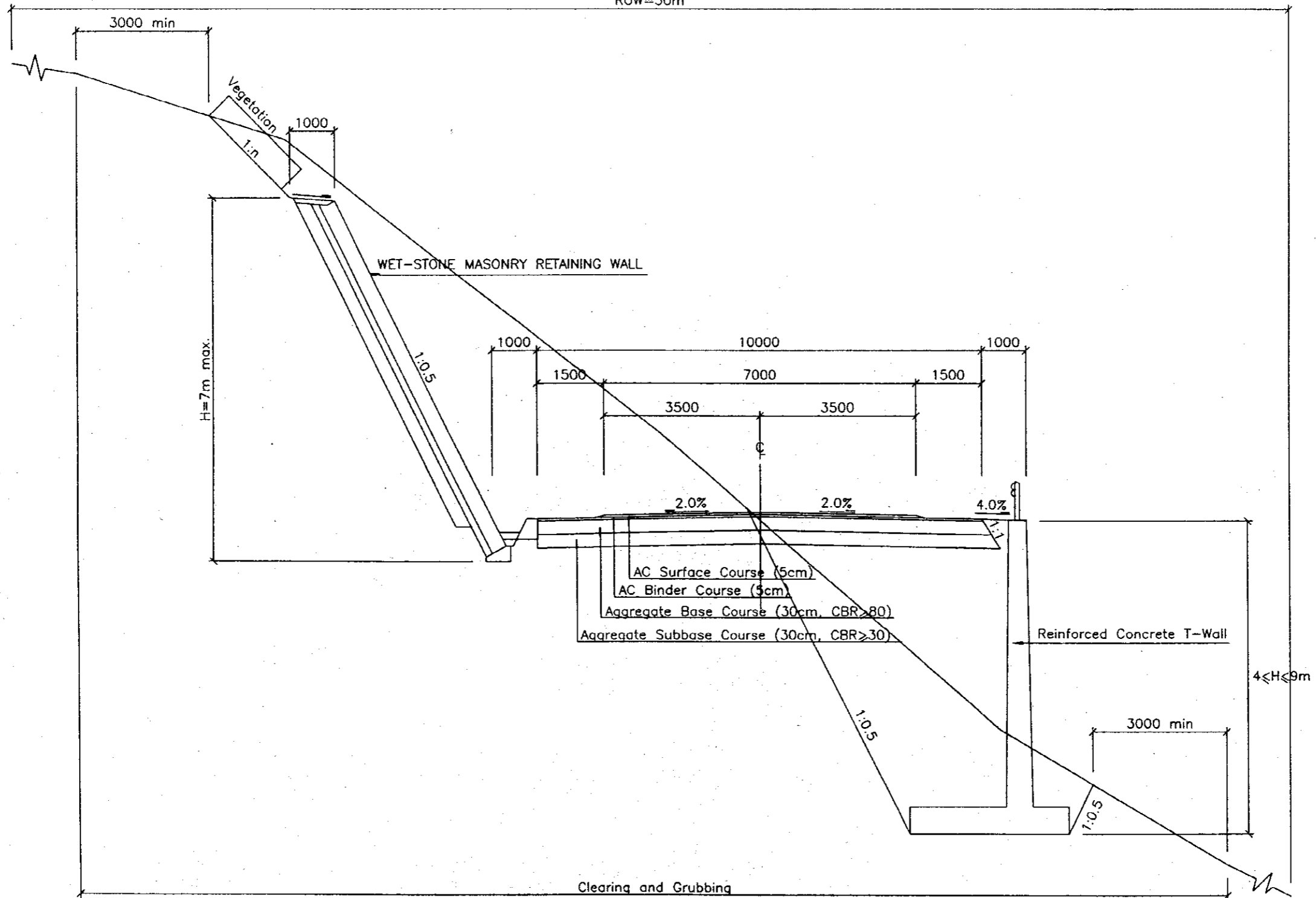


TYPE D - MOUNTAINOUS TERRAIN


PROJECT NAME	CLIENT	CONSULTANT	DWG TITLE	DWG NO.
THE FEASIBILITY STUDY ON THE CONSTRUCTION OF KATHMANDU - NAUBISE ALTERNATE ROAD IN THE KINGDOM OF NEPAL	JAPAN INTERNATIONAL COOPERATION AGENCY HIS MAJESTY'S GOVERNMENT OF NEPAL MINISTRY OF PHYSICAL PLANNING AND WORKS DEPARTMENT OF ROADS	 NIPPON KOEI CO., LTD. Consulting Engineers Tokyo, JAPAN	Typical Cross Sections (2/4)	Hw-2

Scale 1:100

ROW=50m

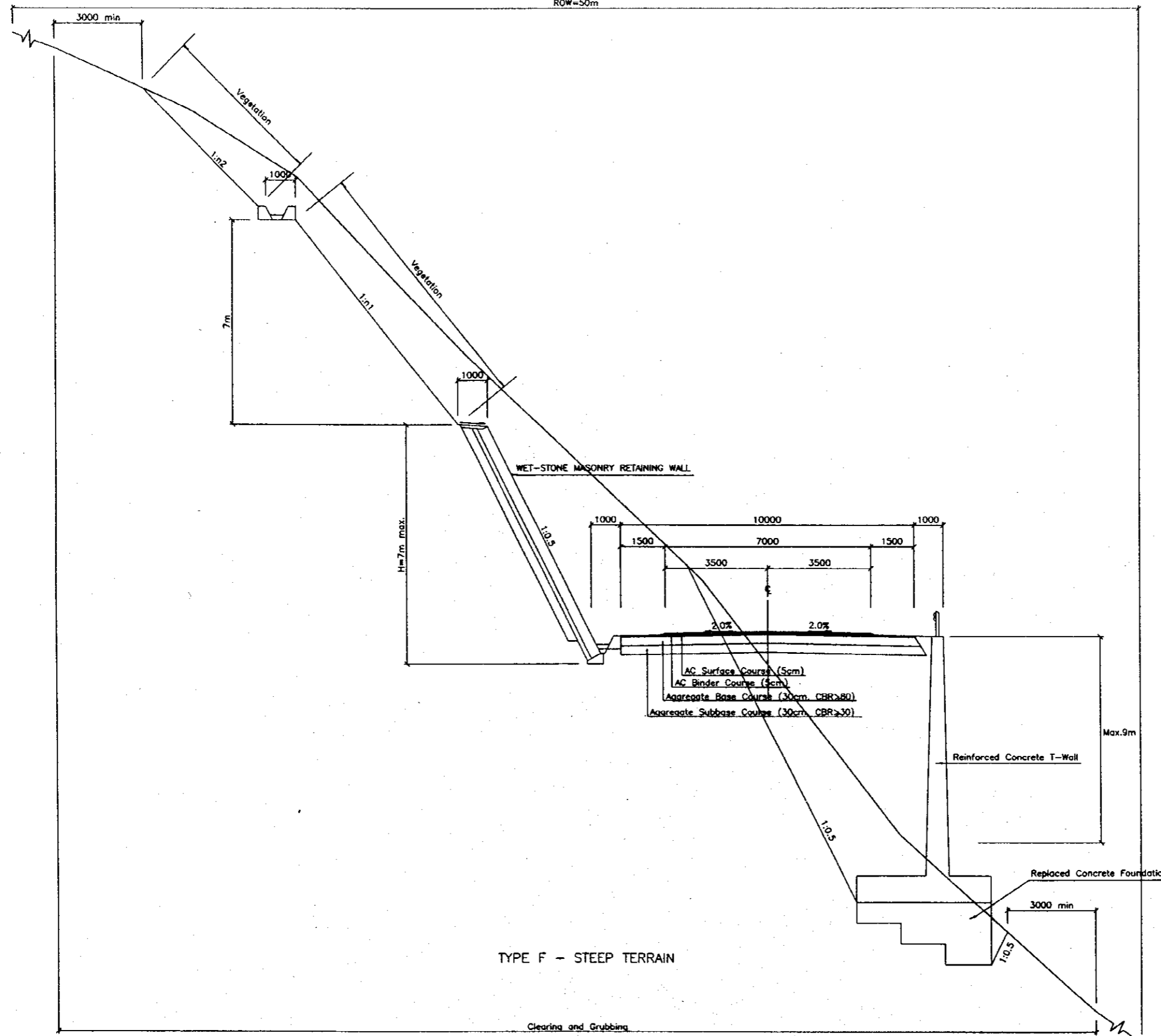



TYPE E - STEEP TERRAIN

PROJECT NAME	CLIENT	CONSULTANT	DWG TITLE	DWG NO.
THE FEASIBILITY STUDY ON THE CONSTRUCTION OF KATHMANDU - NAUBISE ALTERNATE ROAD IN THE KINGDOM OF NEPAL	JAPAN INTERNATIONAL COOPERATION AGENCY HIS MAJESTY'S GOVERNMENT OF NEPAL MINISTRY OF PHYSICAL PLANNING AND WORKS DEPARTMENT OF ROADS	 NIPPON KOEI CO., LTD. Consulting Engineers Tokyo, JAPAN	Typical Cross Sections (3/4)	Hw-3

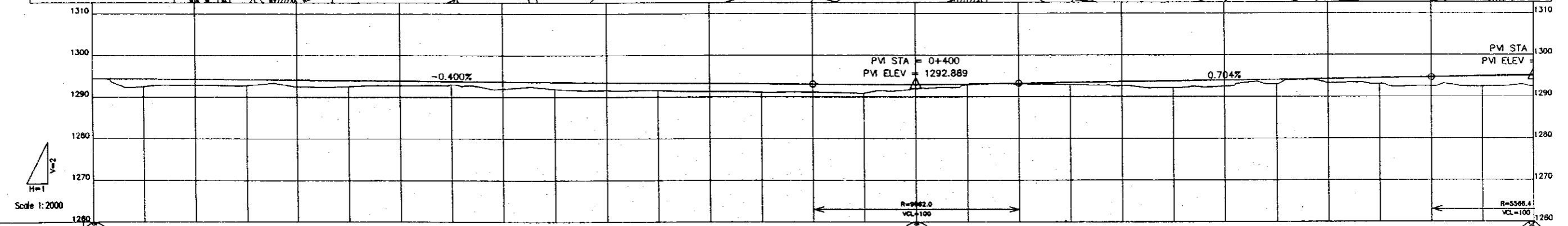
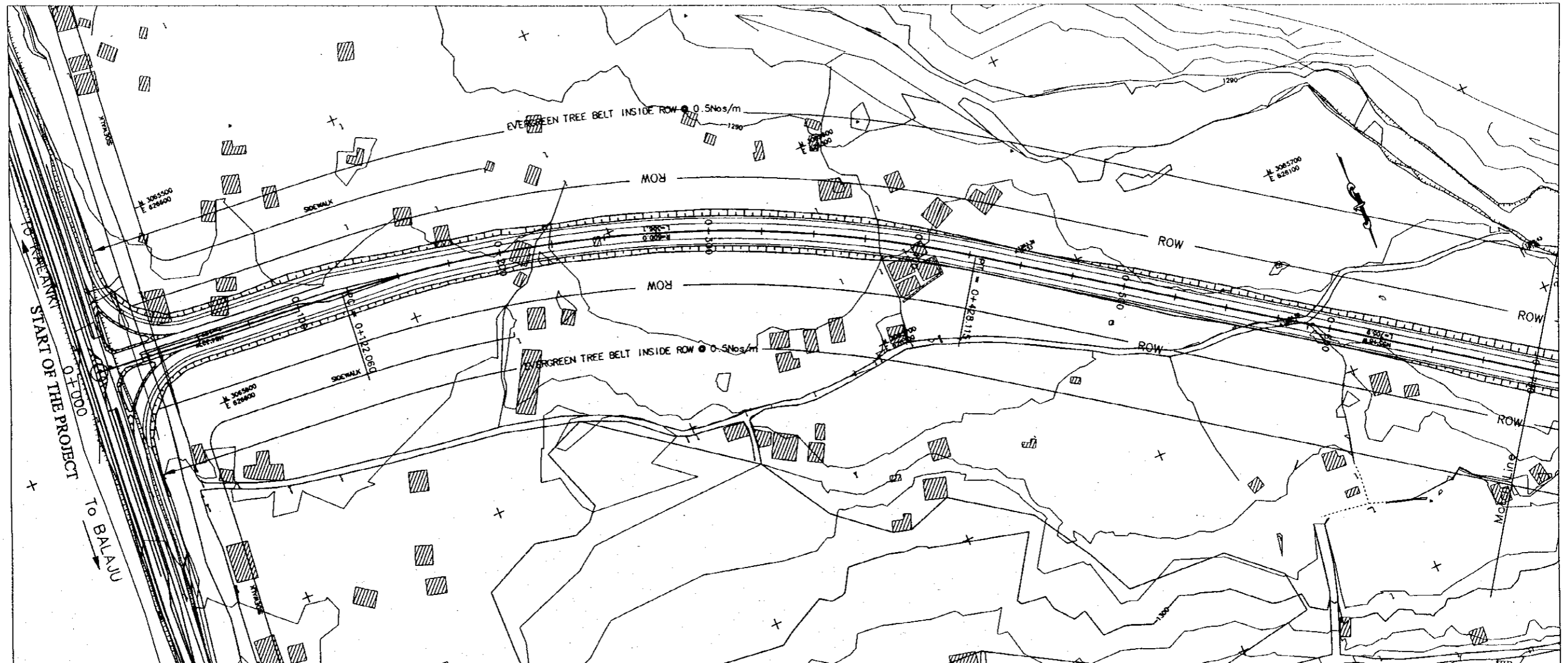
Scale 1:150

ROW=50m




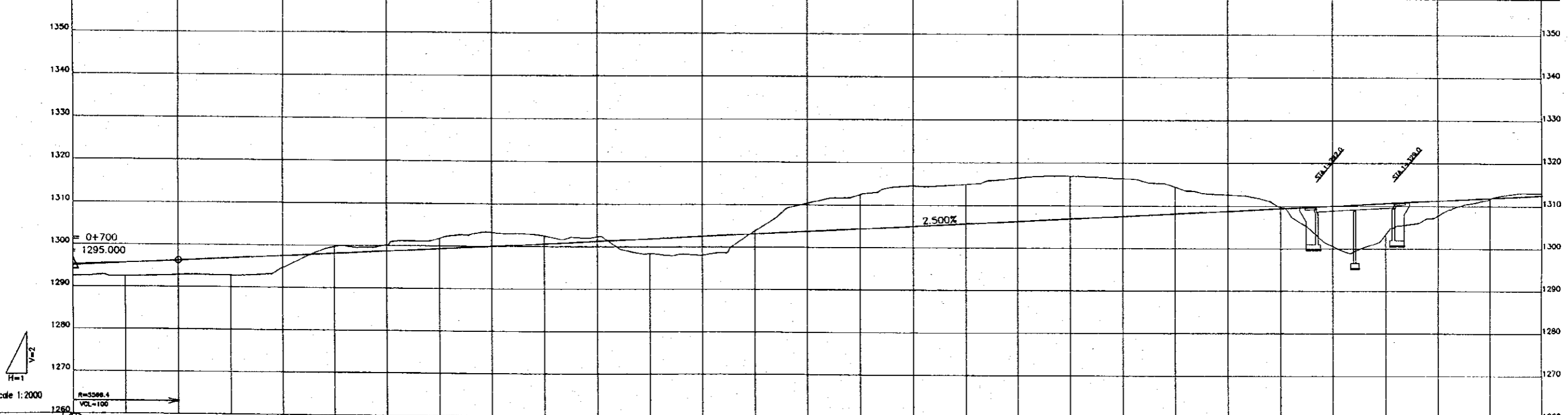
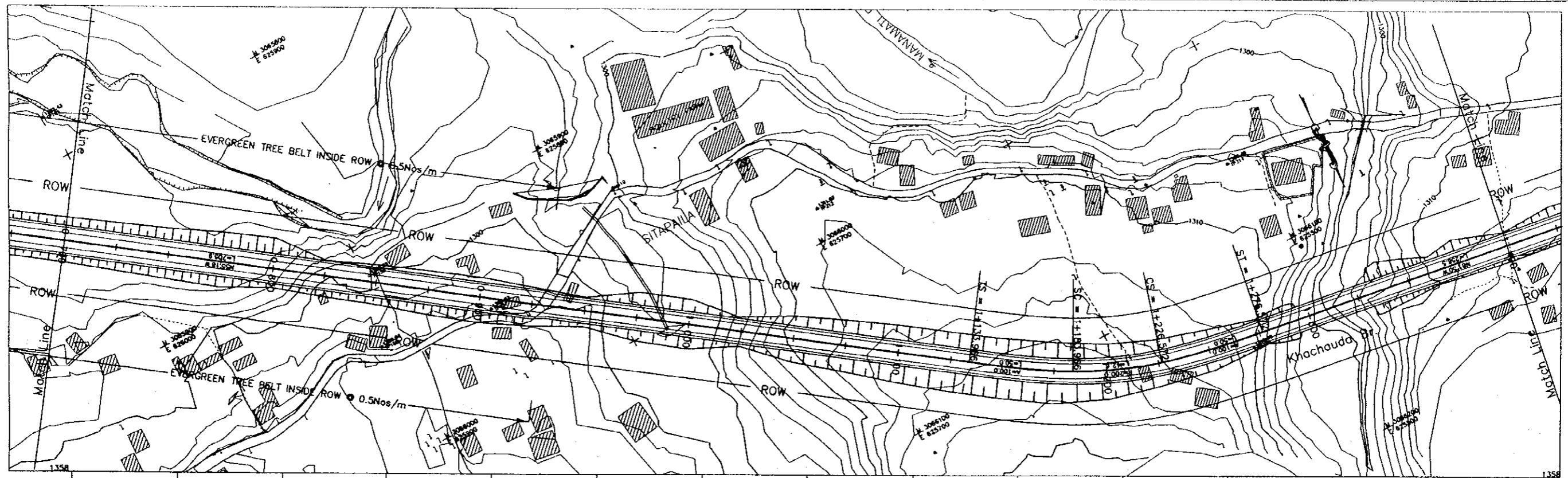
PROJECT NAME	CLIENT	CONSULTANT	DWG TITLE	DWG NO.
THE FEASIBILITY STUDY ON THE CONSTRUCTION OF KATHMANDU - NAUBISE ALTERNATE ROAD IN THE KINGDOM OF NEPAL	JAPAN INTERNATIONAL COOPERATION AGENCY HIS MAJESTY'S GOVERNMENT OF NEPAL MINISTRY OF PHYSICAL PLANNING AND WORKS DEPARTMENT OF ROADS	 NIPPON KOEI CO., LTD. Consulting Engineers Tokyo, JAPAN	Typical Cross Sections (4/4)	Hw-4






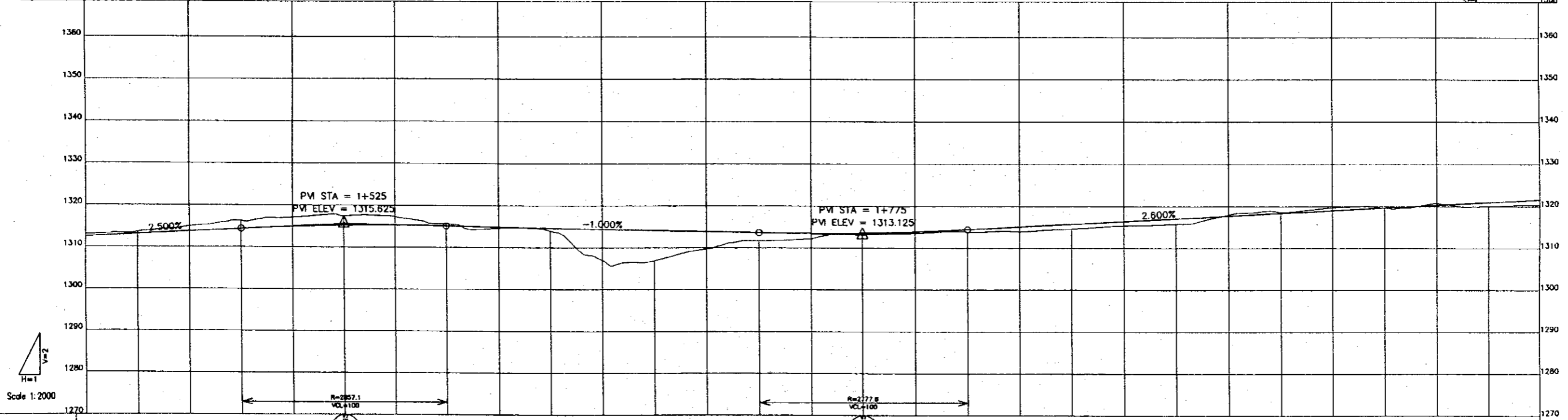
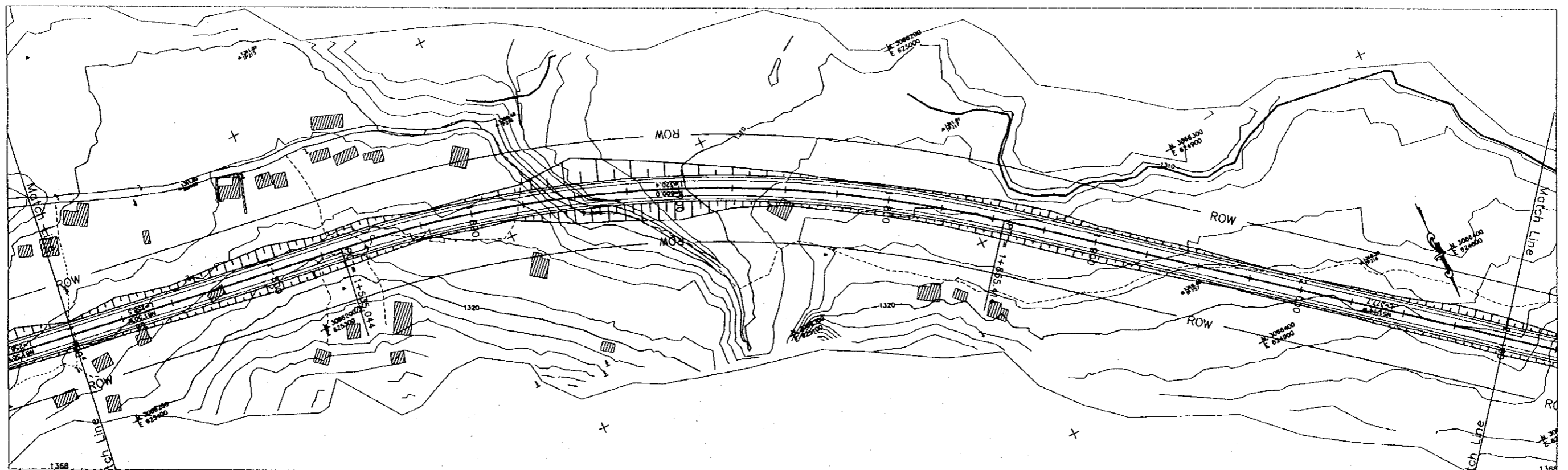
PROFILE	0+000 to 0+700																												
FINISHED GRADE	1294.489	1294.389	1294.289	1294.189	1294.089	1293.989	1293.889	1293.789	1293.689	1293.589	1293.489	1293.389	1293.289	1293.189	1293.089	1292.984	1292.888	1292.794	1292.699	1292.603									
EXISTING GROUND	1294.400	1294.531	1294.618	1294.743	1294.820	1294.899	1294.965	1295.028	1295.088	1295.146	1295.202	1295.255	1295.305	1295.352	1295.396	1295.436	1295.472	1295.503	1295.529	1295.551									
STATION	0+000	0+025	0+050	0+075	0+100	0+125	0+150	0+175	0+200	0+225	0+250	0+275	0+300	0+325	0+350	0+375	0+400	0+425	0+450	0+475	0+500	0+525	0+550	0+575	0+600	0+625	0+650	0+675	0+700
HORIZONTAL ALIGNMENT	0+000 to 0+700																												

PROJECT NAME	CLIENT	CONSULTANT	DWG TITLE	DWG NO.
THE FEASIBILITY STUDY ON THE CONSTRUCTION OF KATHMANDU - NAUBISE ALTERNATE ROAD IN THE KINGDOM OF NEPAL	JAPAN INTERNATIONAL COOPERATION AGENCY HIS MAJESTY'S GOVERNMENT OF NEPAL MINISTRY OF PHYSICAL PLANNING AND WORKS DEPARTMENT OF ROADS	 NIPPON KOEI CO., LTD. Consulting Engineers Tokyo, JAPAN	PLAN AND PROFILE STA.0+000 to STA.0+700	Hw-5



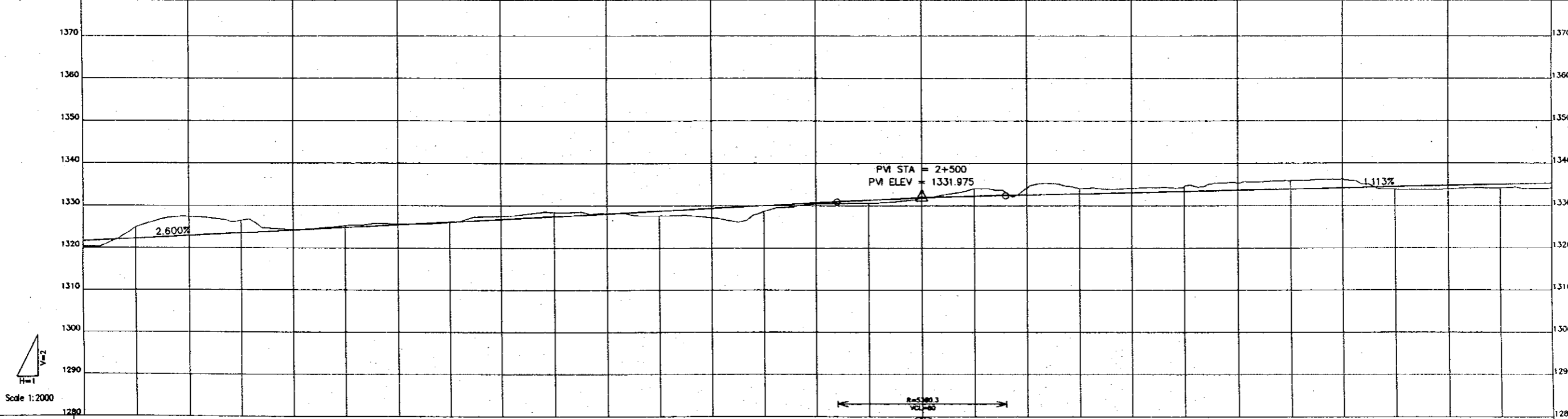
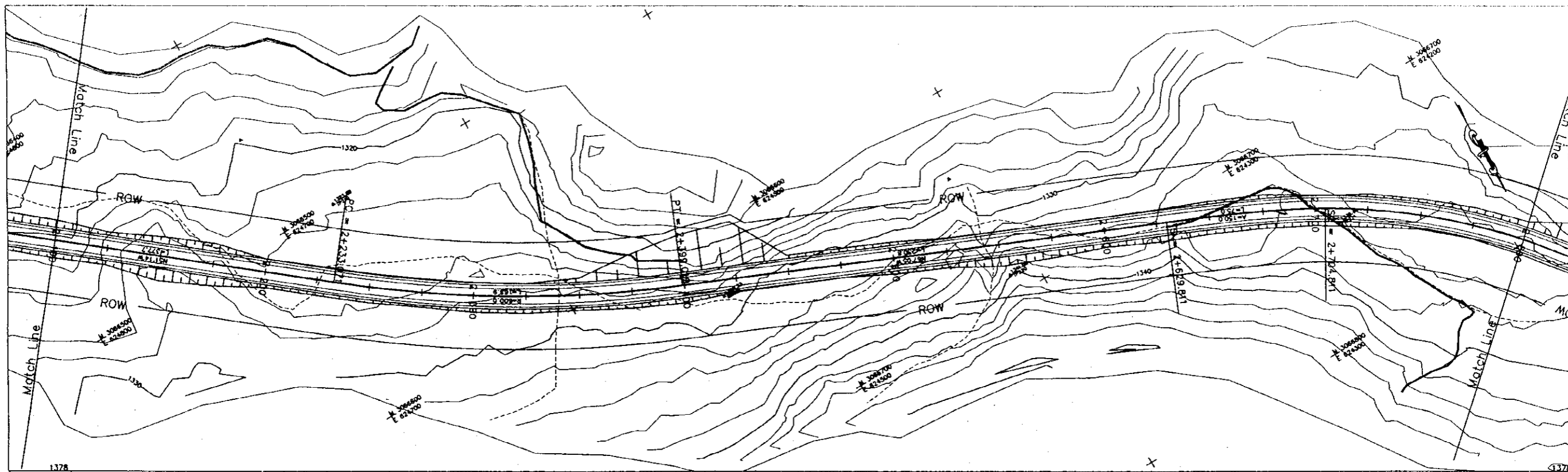
PROFILE																													
FINISHED GRADE	1295.225	1295.681	1296.250	1296.875	1297.500	1298.125	1298.750	1299.375	1300.000	1300.625	1301.250	1301.875	1302.500	1303.125	1303.750	1304.375	1305.000	1305.625	1306.250	1306.875	1307.500	1308.125	1308.750	1309.375	1310.000	1310.625	1311.250	1311.875	1312.500
EXISTING GROUND	1292.508	1292.511	1292.817	1292.770	1294.664	1299.676	1300.154	1301.820	1303.278	1302.481	1302.284	1298.328	1298.108	1303.809	1310.398	1312.500	1314.474	1314.821	1316.445	1316.868	1316.356	1314.417	1312.605	1309.728	1300.571	1303.346	1307.776	1311.822	1313.063
STATION	0+700	0+725	0+750	0+775	0+800	0+825	0+850	0+875	0+900	0+925	0+950	0+975	1+000	1+025	1+050	1+075	1+100	1+125	1+150	1+175	1+200	1+225	1+250	1+275	1+300	1+325	1+350	1+375	1+400
HORIZONTAL ALIGNMENT	R=3598.4															R=278.572		R=8											

PROJECT NAME	CLIENT	CONSULTANT	DWG TITLE	DWG NO.
THE FEASIBILITY STUDY ON THE CONSTRUCTION OF KATHMANDU - NAUBISE ALTERNATE ROAD IN THE KINGDOM OF NEPAL	JAPAN INTERNATIONAL COOPERATION AGENCY HIS MAJESTY'S GOVERNMENT OF NEPAL MINISTRY OF PHYSICAL PLANNING AND WORKS DEPARTMENT OF ROADS	 NIPPON KOEI CO., LTD. Consulting Engineers Tokyo, JAPAN	PLAN AND PROFILE STA.0+700 to STA.1+400	Hw-6



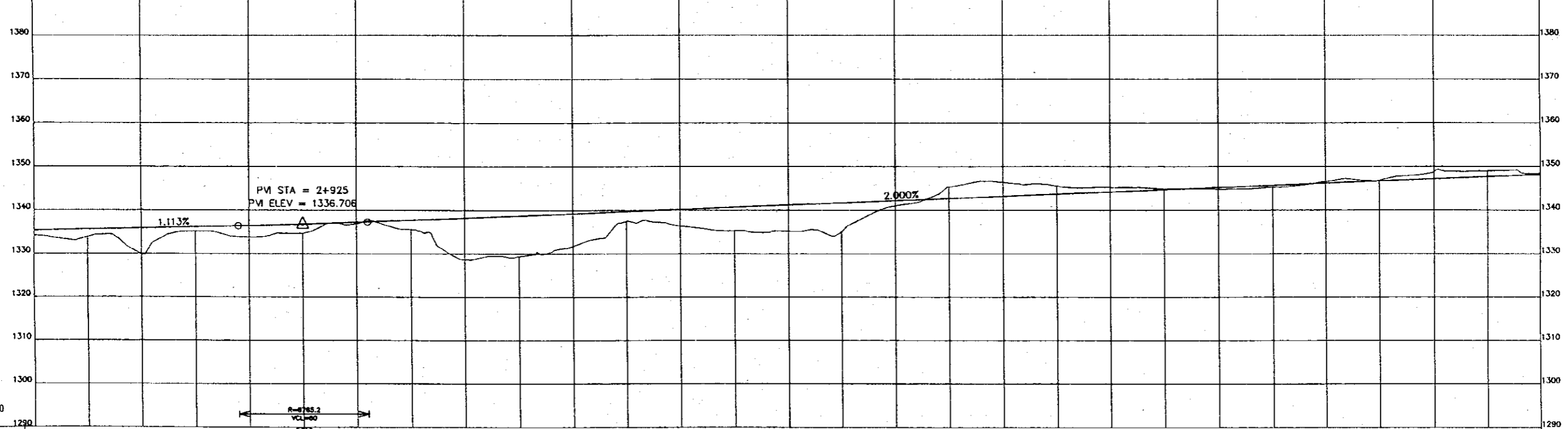
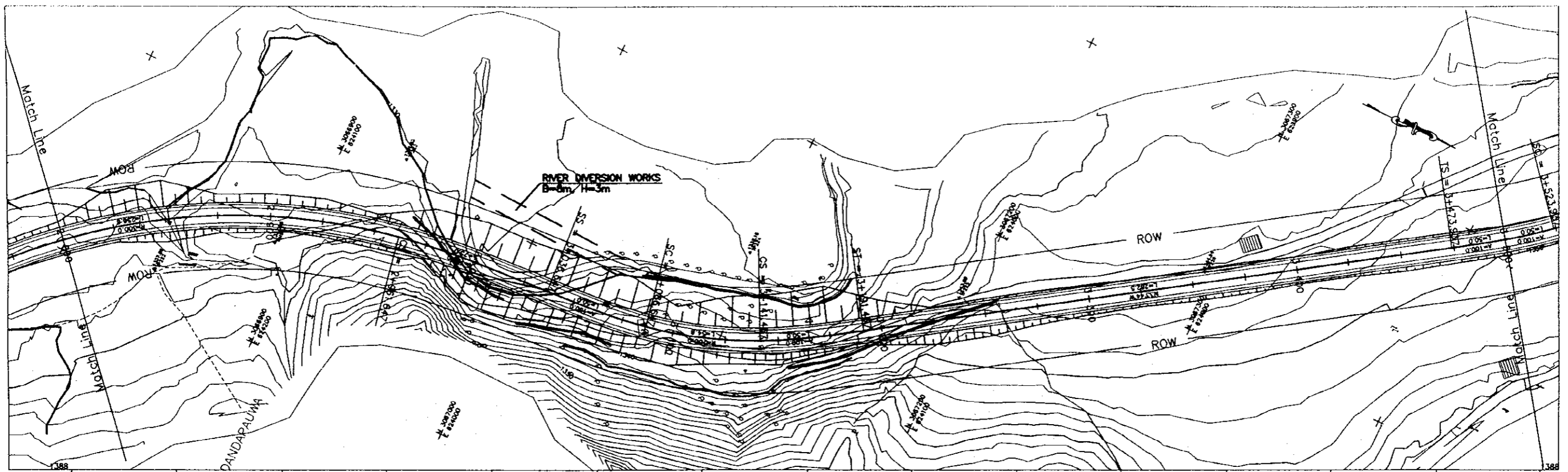
PROFILE																				
FINISHED GRADE	1312.500	1313.125	1313.750	1314.375	1314.891	1315.187	1315.266	1315.125	1314.875	1314.625	1314.375	1314.125	1313.875	1313.625	1313.375	1313.125	1312.875	1312.625	1312.375	1312.125
EXISTING GROUND	1313.083	1313.569	1314.011	1314.241	1314.130	1313.459	1317.507	1315.617	1314.805	1313.933	1307.014	1308.893	1309.738	1311.663	1312.158	1313.338	1313.520	1313.865	1313.907	1314.650
STATION	1+400	1+425	1+450	1+475	1+500	1+525	1+550	1+575	1+600	1+625	1+650	1+675	1+700	1+725	1+750	1+775	1+800	1+825	1+850	1+875
HORIZONTAL ALIGNMENT																				

PROJECT NAME	CLIENT	CONSULTANT	DWG TITLE	DWG NO.
THE FEASIBILITY STUDY ON THE CONSTRUCTION OF KATHMANDU - NAUBISE ALTERNATE ROAD IN THE KINGDOM OF NEPAL	JAPAN INTERNATIONAL COOPERATION AGENCY HIS MAJESTY'S GOVERNMENT OF NEPAL MINISTRY OF PHYSICAL PLANNING AND WORKS DEPARTMENT OF ROADS	NIPPON KOEI CO., LTD. Consulting Engineers Tokyo, JAPAN	PLAN AND PROFILE STA.1+400 to STA.2+100	Hw-7



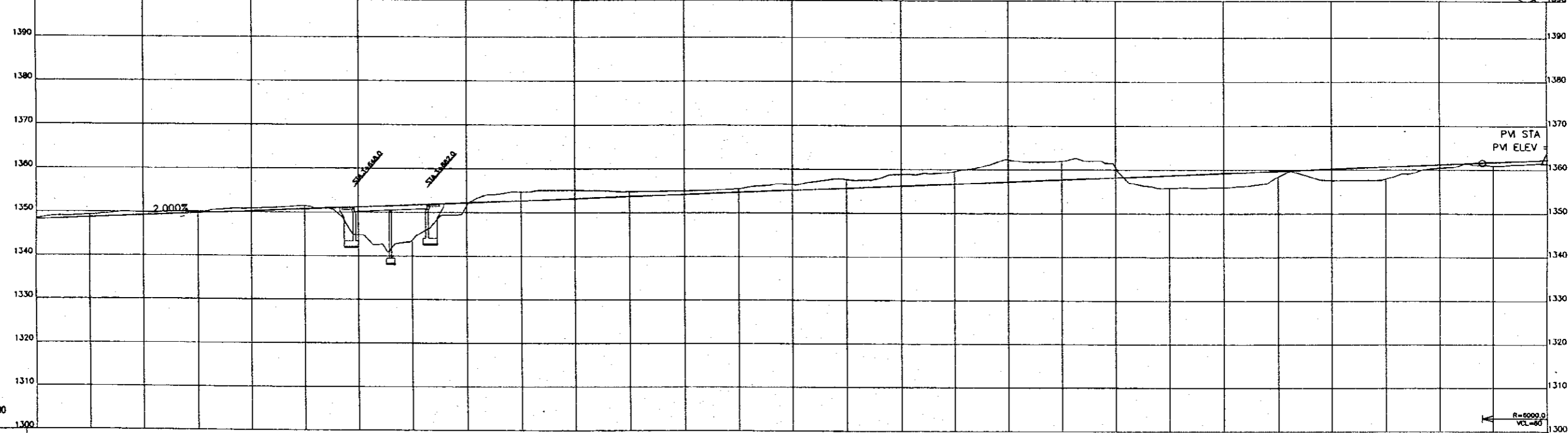
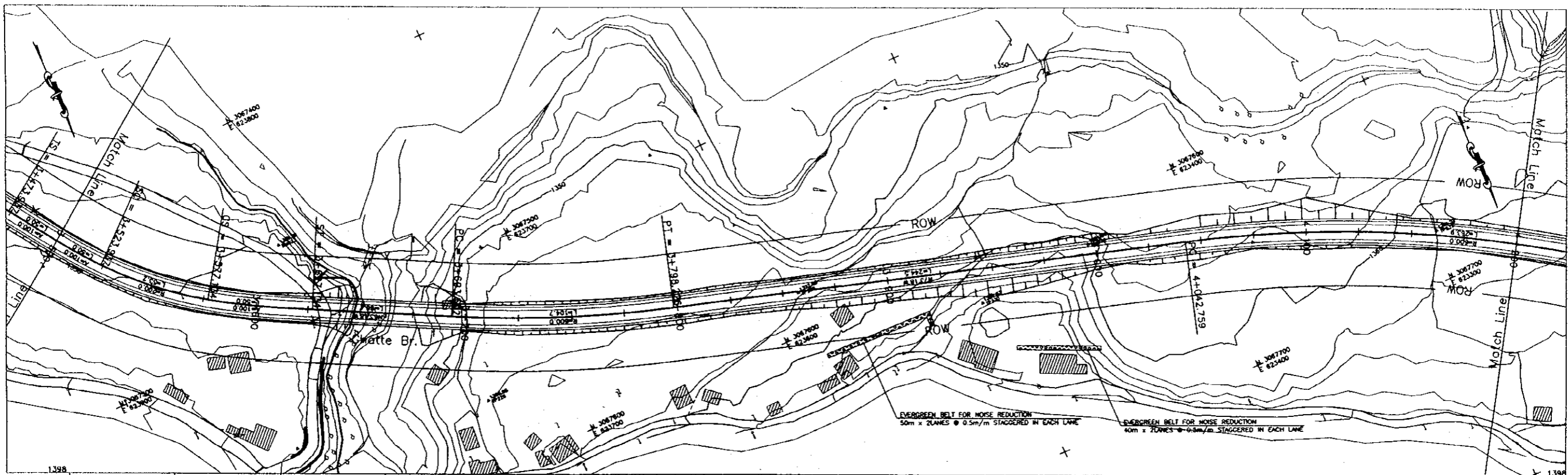
PROFILE	2+100 to 2+800																												
FINISHED GRADE	1321.575	1322.225	1322.875	1323.525	1324.175	1324.825	1325.475	1326.125	1326.775	1327.425	1328.075	1328.725	1329.375	1330.025	1330.675	1331.304	1331.926	1332.232	1332.532	1332.810	1333.088	1333.366	1333.645	1333.923	1334.201	1334.479	1334.758	1335.038	1335.314
EXISTING GROUND	1320.263	1321.866	1322.353	1322.503	1324.245	1325.247	1325.660	1326.008	1327.550	1328.175	1328.178	1327.615	1327.166	1328.634	1330.438	1330.587	1331.878	1334.040	1334.219	1334.056	1334.125	1334.551	1335.287	1335.899	1336.187	1333.645	1333.808	1334.204	1334.151
STATION	2+100	2+125	2+150	2+175	2+200	2+225	2+250	2+275	2+300	2+325	2+350	2+375	2+400	2+425	2+450	2+475	2+500	2+525	2+550	2+575	2+600	2+625	2+650	2+675	2+700	2+725	2+750	2+775	2+800
HORIZONTAL ALIGNMENT	<div style="display: flex; justify-content: space-between;"> <span>2+233.071</span> <span>R=800</span> <span>2+500.019</span> <span>R=∞</span> <span>2+629.811</span> <span>A=150</span> <span>2+764.811</span> </div>																												

<b>PROJECT NAME</b> THE FEASIBILITY STUDY ON THE CONSTRUCTION OF KATHMANDU - NAUBISE ALTERNATE ROAD IN THE KINGDOM OF NEPAL	<b>CLIENT</b> JAPAN INTERNATIONAL COOPERATION AGENCY HIS MAJESTY'S GOVERNMENT OF NEPAL MINISTRY OF PHYSICAL PLANNING AND WORKS DEPARTMENT OF ROADS	<b>CONSULTANT</b> NIPPON KOEI CO., LTD. Consulting Engineers Tokyo, JAPAN	<b>DWG TITLE</b> PLAN AND PROFILE STA.2+100 to STA.2+800	<b>DWG NO.</b> Hw-8
--	--	--	--	------------------------



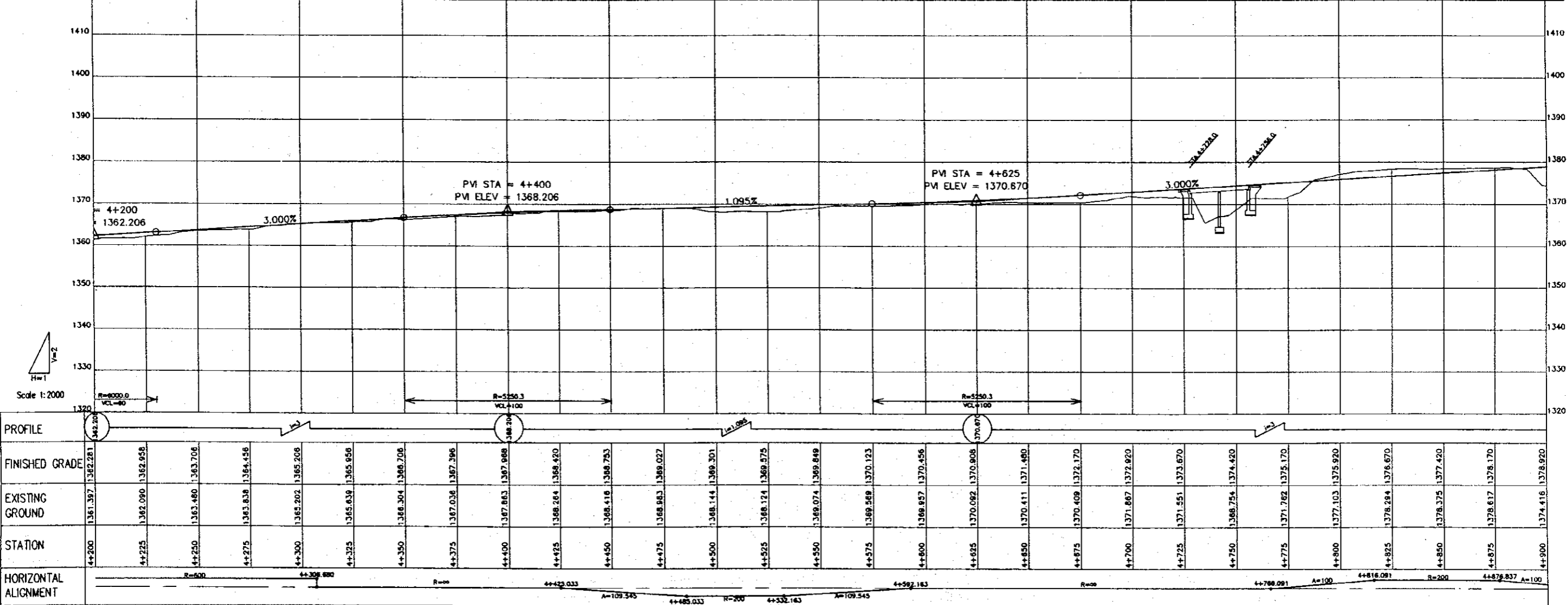
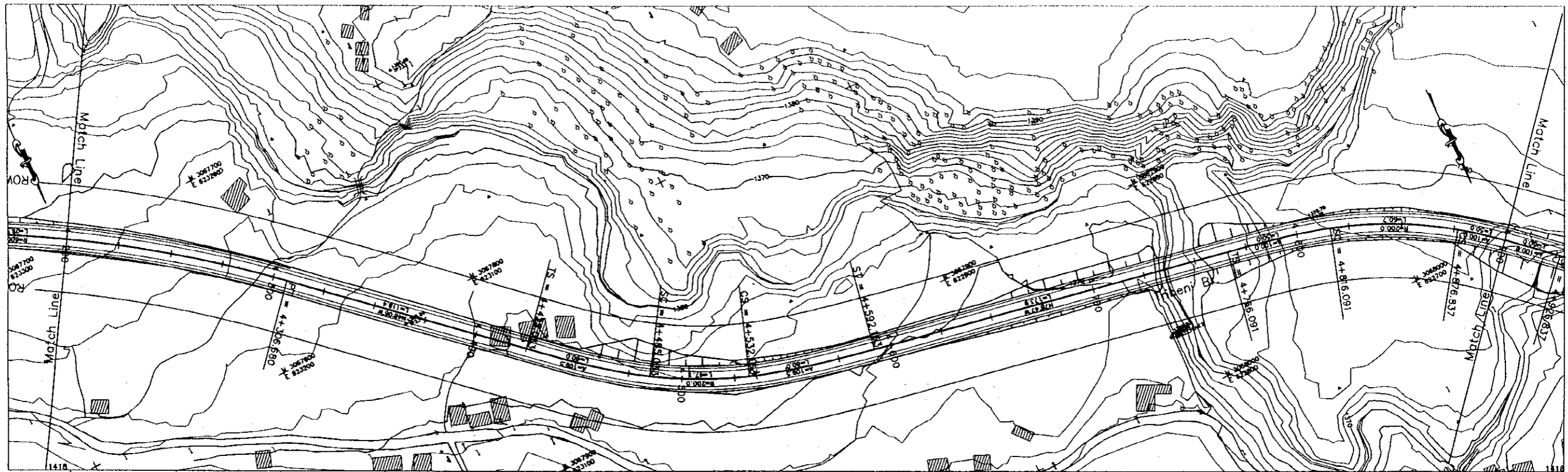
PROFILE																				
FINISHED GRADE	1334.151	1335.314	1335.593	1335.871	1336.149	1336.429	1336.706	1337.008	1337.208	1337.508	1337.706	1338.006	1338.306	1338.606	1338.906	1339.206	1339.506	1339.806	1340.106	1340.406
EXISTING GROUND	1334.151	1333.884	1333.593	1333.286	1332.971	1332.649	1332.314	1331.971	1331.621	1331.266	1330.906	1330.541	1330.171	1329.796	1329.411	1329.021	1328.626	1328.226	1327.821	1327.411
STATION	2+800	2+825	2+850	2+875	2+900	2+925	2+950	2+975	3+000	3+025	3+050	3+075	3+100	3+125	3+150	3+175	3+200	3+225	3+250	3+275
HORIZONTAL ALIGNMENT																				


PROJECT NAME	CLIENT	CONSULTANT	DWG TITLE	DWG NO.
THE FEASIBILITY STUDY ON THE CONSTRUCTION OF KATHMANDU - NAUBISE ALTERNATE ROAD IN THE KINGDOM OF NEPAL	JAPAN INTERNATIONAL COOPERATION AGENCY HIS MAJESTY'S GOVERNMENT OF NEPAL MINISTRY OF PHYSICAL PLANNING AND WORKS DEPARTMENT OF ROADS	NIPPON KOEI CO., LTD. Consulting Engineers Tokyo, JAPAN	PLAN AND PROFILE STA.2+800 to STA.3+500	Hw-9

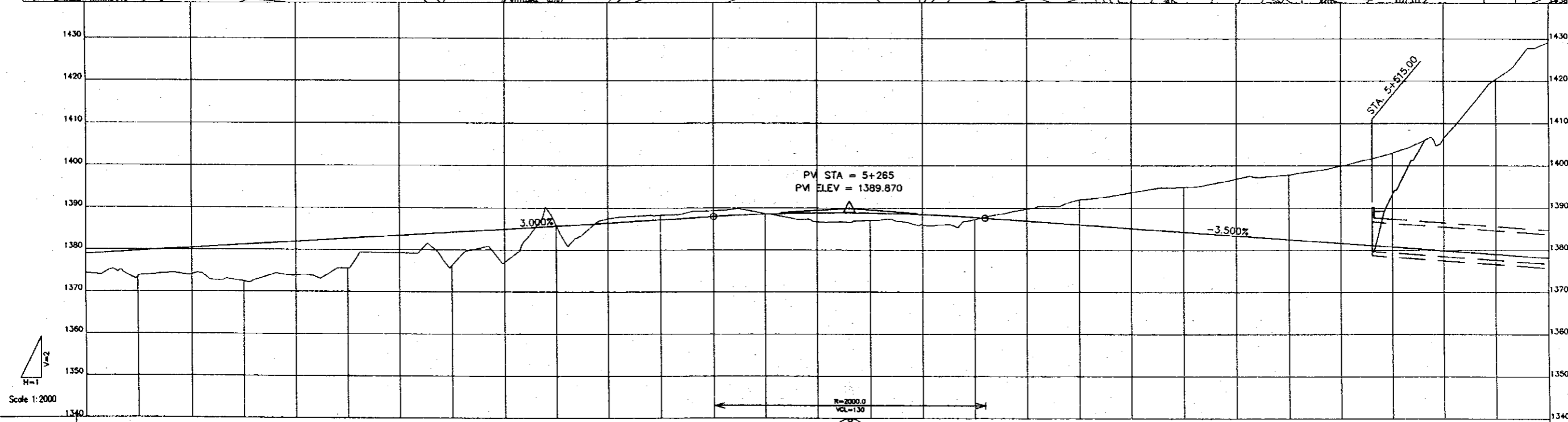
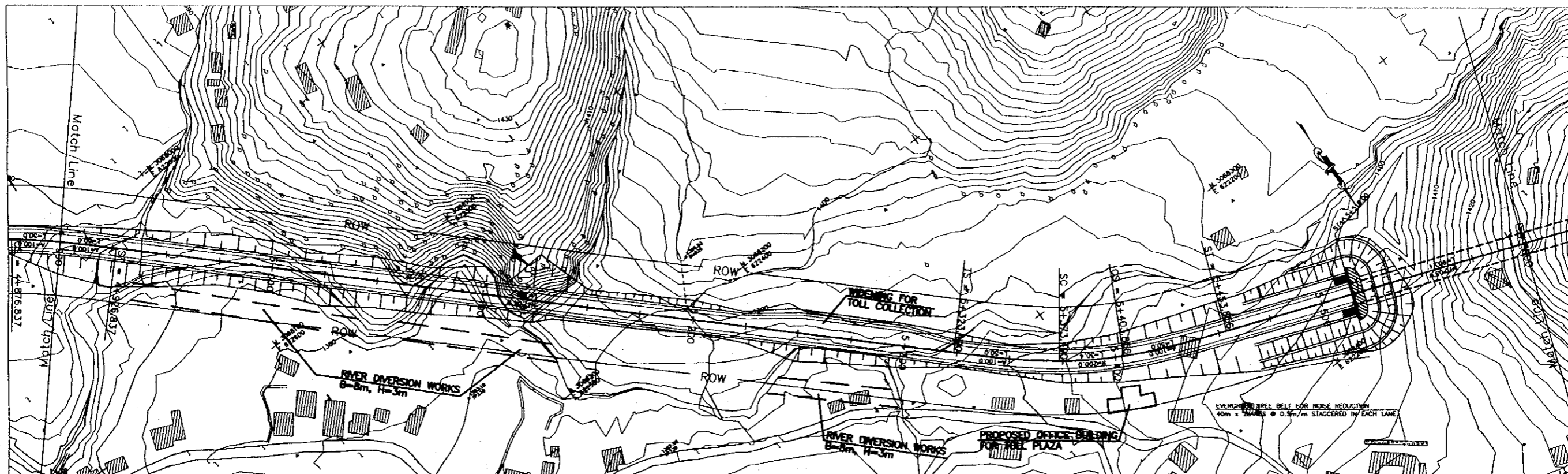


PROFILE																				
FINISHED GRADE	1348.83	1348.206	1348.706	1349.206	1349.706	1350.206	1350.706	1351.206	1351.706	1352.206	1352.706	1353.206	1353.706	1354.206	1354.706	1355.206	1355.706	1356.206	1356.706	1357.206
EXISTING GROUND	1348.83	1348.293	1348.871	1349.076	1349.776	1350.445	1351.111	1351.776	1352.445	1353.111	1353.776	1354.445	1355.111	1355.776	1356.445	1357.111	1357.776	1358.445	1359.111	1359.776
STATION	3+500	3+525	3+550	3+575	3+600	3+625	3+650	3+675	3+700	3+725	3+750	3+775	3+800	3+825	3+850	3+875	3+900	3+925	3+950	3+975
HORIZONTAL ALIGNMENT	<p> <math>A=100</math> <math>3+523.937</math> <math>R=200</math> <math>3+577.134</math> <math>A=100</math> <math>3+627.134</math> <math>R=500</math> <math>3+683.502</math> <math>R=600</math> <math>3+736.228</math> <math>R=500</math> <math>3+792.758</math> <math>R=600</math> </p>																			


PROJECT NAME	CLIENT	CONSULTANT	DWG TITLE	DWG NO.
THE FEASIBILITY STUDY ON THE CONSTRUCTION OF KATHMANDU - NAUBISE ALTERNATE ROAD IN THE KINGDOM OF NEPAL	JAPAN INTERNATIONAL COOPERATION AGENCY HIS MAJESTY'S GOVERNMENT OF NEPAL MINISTRY OF PHYSICAL PLANNING AND WORKS DEPARTMENT OF ROADS	NIPPON KOEI CO., LTD. Consulting Engineers Tokyo, JAPAN	PLAN AND PROFILE STA.3+500 to STA.4+200	Hw-10



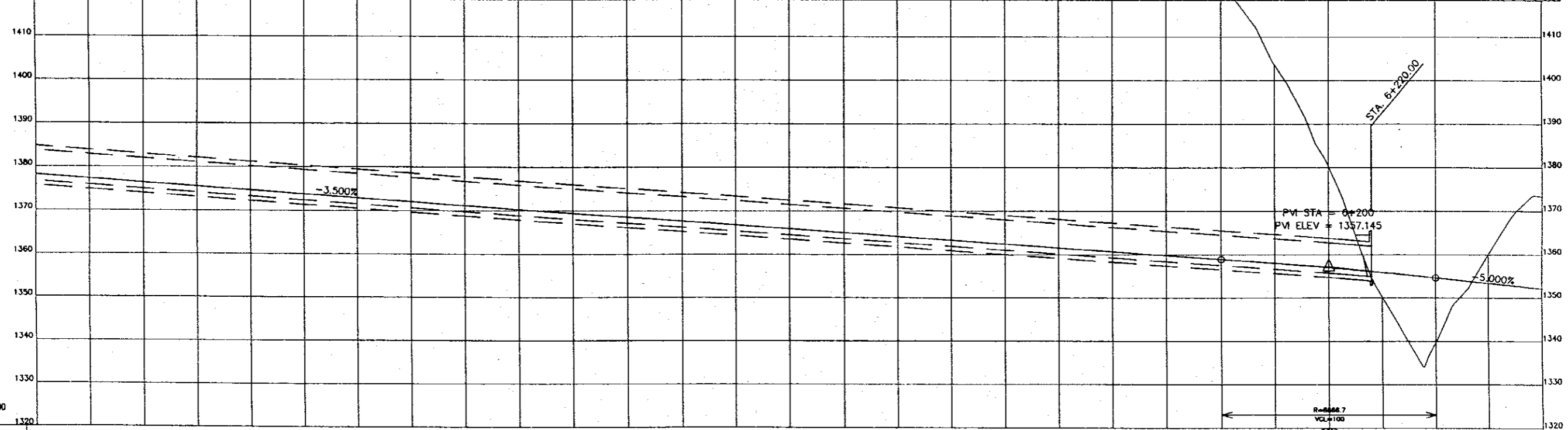
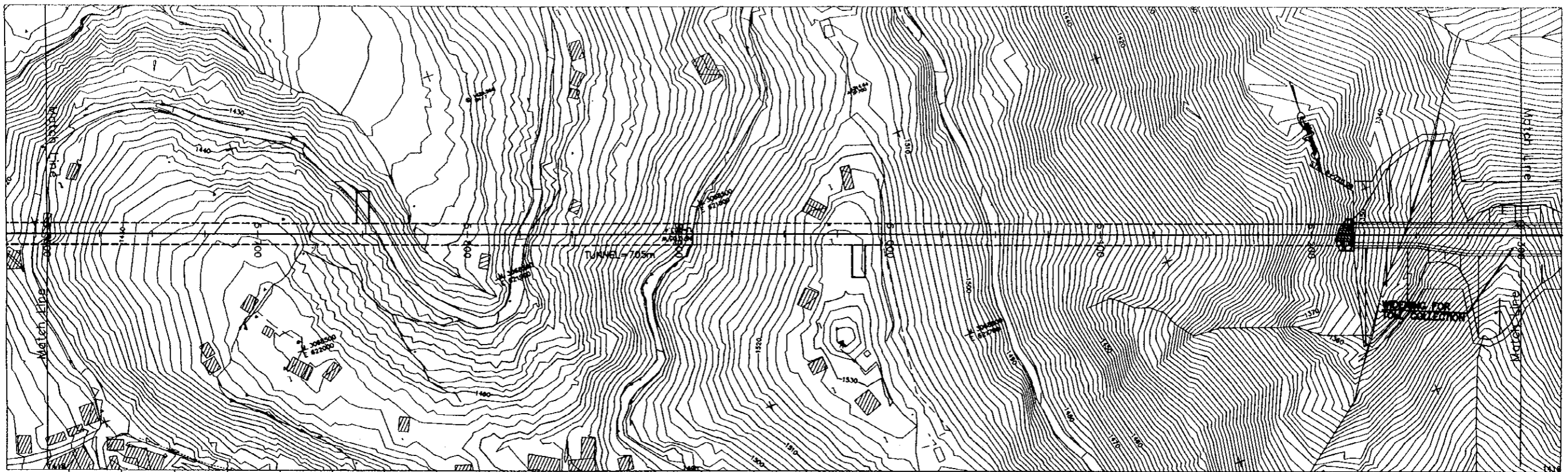
PROJECT NAME	CLIENT	CONSULTANT	DWG TITLE	DWG NO.
THE FEASIBILITY STUDY ON THE CONSTRUCTION OF KATHMANDU - NAUBISE ALTERNATE ROAD IN THE KINGDOM OF NEPAL	JAPAN INTERNATIONAL COOPERATION AGENCY HIS MAJESTY'S GOVERNMENT OF NEPAL MINISTRY OF PHYSICAL PLANNING AND WORKS DEPARTMENT OF ROADS	 NIPPON KOEI CO., LTD. Consulting Engineers Tokyo, JAPAN	PLAN AND PROFILE STA.4+200 to STA.4+900	Hw-11



PROFILE	ELEVATION DATA (m)																				
FINISHED GRADE	1378.920	1378.670	1380.420	1381.170	1381.920	1382.670	1383.420	1384.170	1384.920	1385.670	1386.420	1387.170	1387.920	1388.670	1389.420	1390.170	1390.920	1391.670	1392.420	1393.170	1393.920
EXISTING GROUND	1374.418	1373.988	1374.087	1372.413	1373.935	1375.581	1379.228	1378.308	1377.087	1385.770	1387.377	1388.221	1387.259	1386.657	1386.897	1384.983	1381.930	1383.744	1383.697	1394.665	1396.868
STATION	4+900	4+925	4+950	4+975	5+000	5+025	5+050	5+075	5+100	5+125	5+150	5+175	5+200	5+225	5+250	5+275	5+300	5+325	5+350	5+375	5+400
HORIZONTAL ALIGNMENT	A=100 4+928.637 R=∞ 5+322.480 A=100 5+373.490 R=200 5+403.858 A=100 5+453.858 R=∞																				

PROJECT NAME	CLIENT	CONSULTANT	DWG TITLE	DWG NO.
THE FEASIBILITY STUDY ON THE CONSTRUCTION OF KATHMANDU - NAUBISE ALTERNATE ROAD IN THE KINGDOM OF NEPAL	JAPAN INTERNATIONAL COOPERATION AGENCY HIS MAJESTY'S GOVERNMENT OF NEPAL MINISTRY OF PHYSICAL PLANNING AND WORKS DEPARTMENT OF ROADS	 NIPPON KOEI CO., LTD. Consulting Engineers Tokyo, JAPAN	PLAN AND PROFILE STA.4+900 to STA.5+600	Hw-12

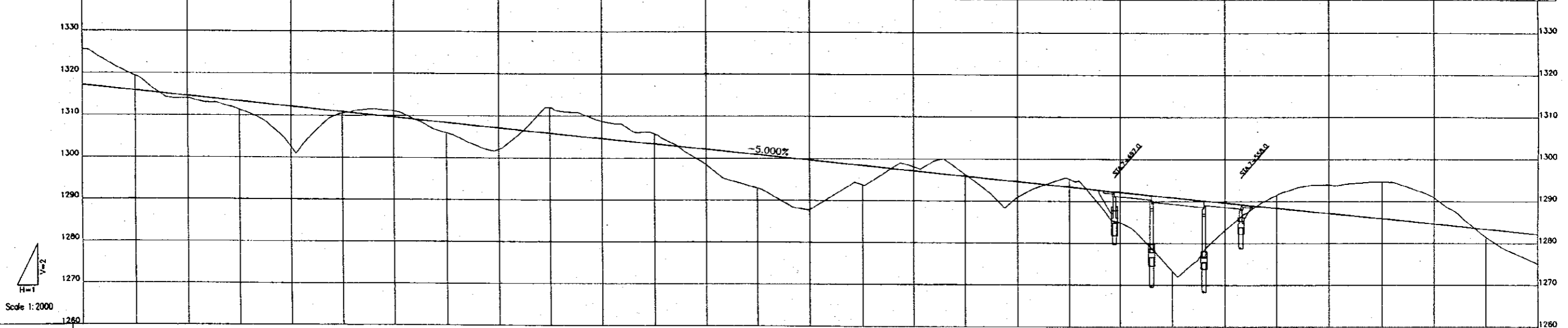





PROFILE																													
FINISHED GRADE	1378.145	1377.270	1376.395	1375.520	1374.645	1373.770	1372.895	1372.020	1371.145	1370.270	1369.395	1368.520	1367.645	1366.770	1365.895	1365.020	1364.145	1363.270	1362.395	1361.520	1360.645	1359.770	1358.895	1357.973	1356.958	1355.848	1354.645	1353.395	1352.145
EXISTING GROUND	1429.215	1447.384	1454.430	1459.248	1461.828	1453.102	1441.017	1427.880	1430.923	1444.217	1458.723	1473.882	1487.012	1503.646	1517.674	1528.200	1520.088	1505.383	1487.788	1470.570	1454.481	1438.577	1422.241	1403.553	1380.173	1350.219	1339.772	1360.082	1373.343
STATION	5+600	5+625	5+650	5+675	5+700	5+725	5+750	5+775	5+800	5+825	5+850	5+875	5+900	5+925	5+950	5+975	6+000	6+025	6+050	6+075	6+100	6+125	6+150	6+175	6+200	6+225	6+250	6+275	6+300
HORIZONTAL ALIGNMENT																													

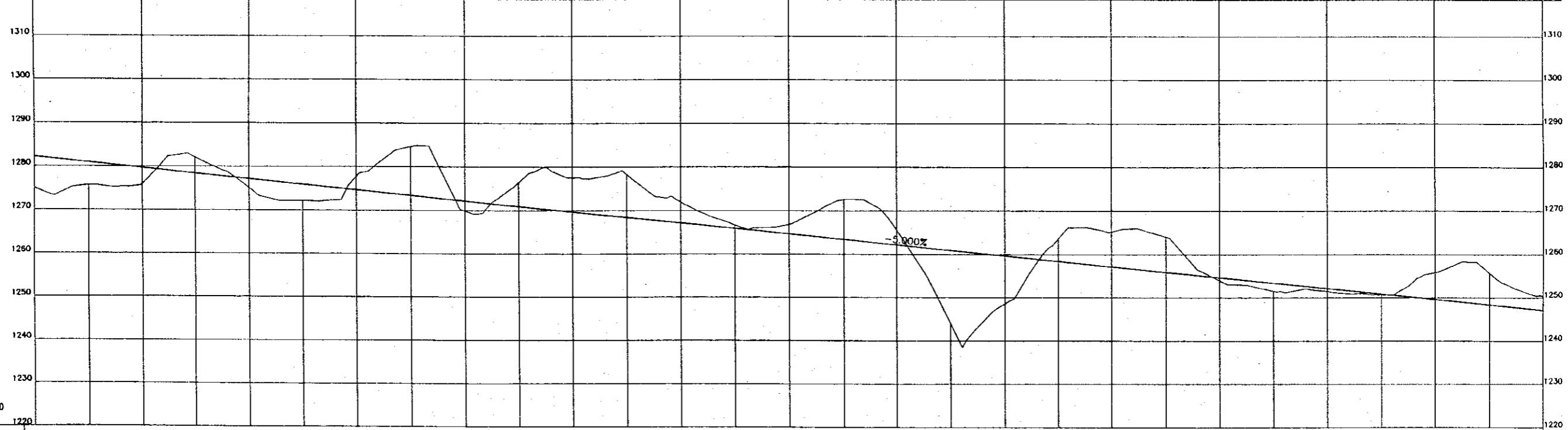
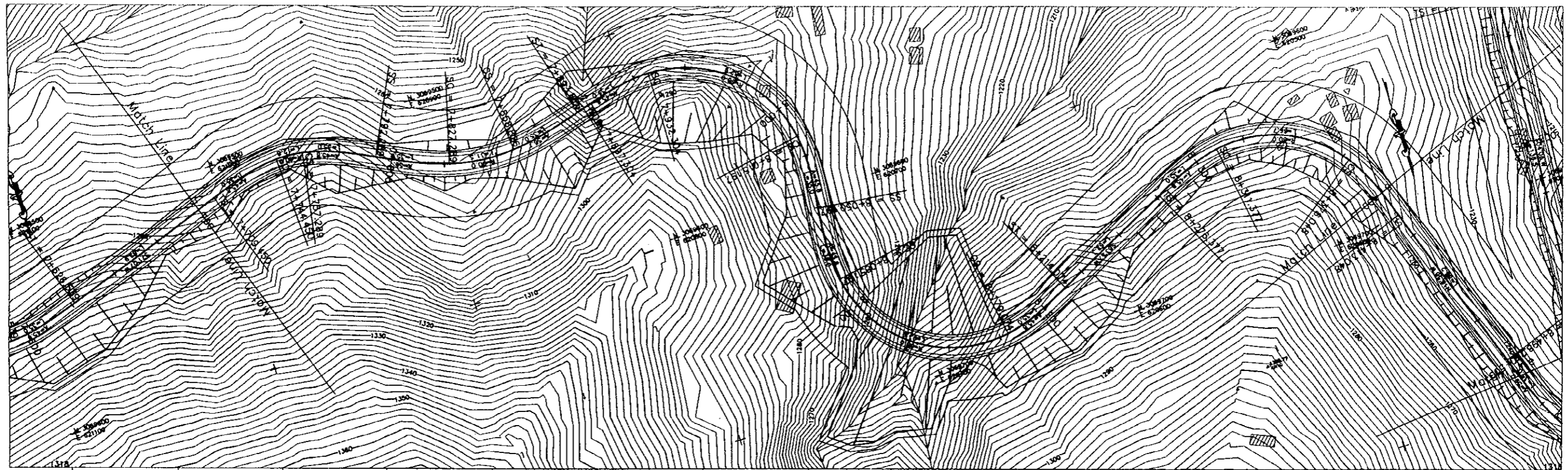
PROJECT NAME	CLIENT	CONSULTANT	DWG TITLE	DWG NO.
THE FEASIBILITY STUDY ON THE CONSTRUCTION OF KATHMANDU - NAUBISE ALTERNATE ROAD IN THE KINGDOM OF NEPAL	JAPAN INTERNATIONAL COOPERATION AGENCY HIS MAJESTY'S GOVERNMENT OF NEPAL MINISTRY OF PHYSICAL PLANNING AND WORKS DEPARTMENT OF ROADS	NIPPON KOEI CO., LTD. Consulting Engineers Tokyo, JAPAN	PLAN AND PROFILE STA.5+600 to STA.6+300	Hw-13






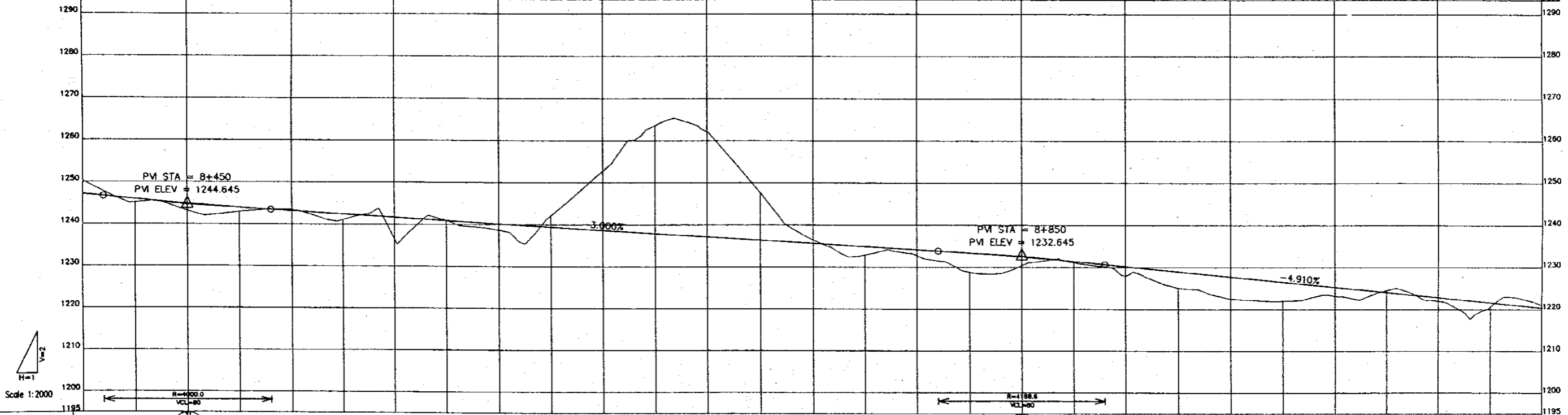
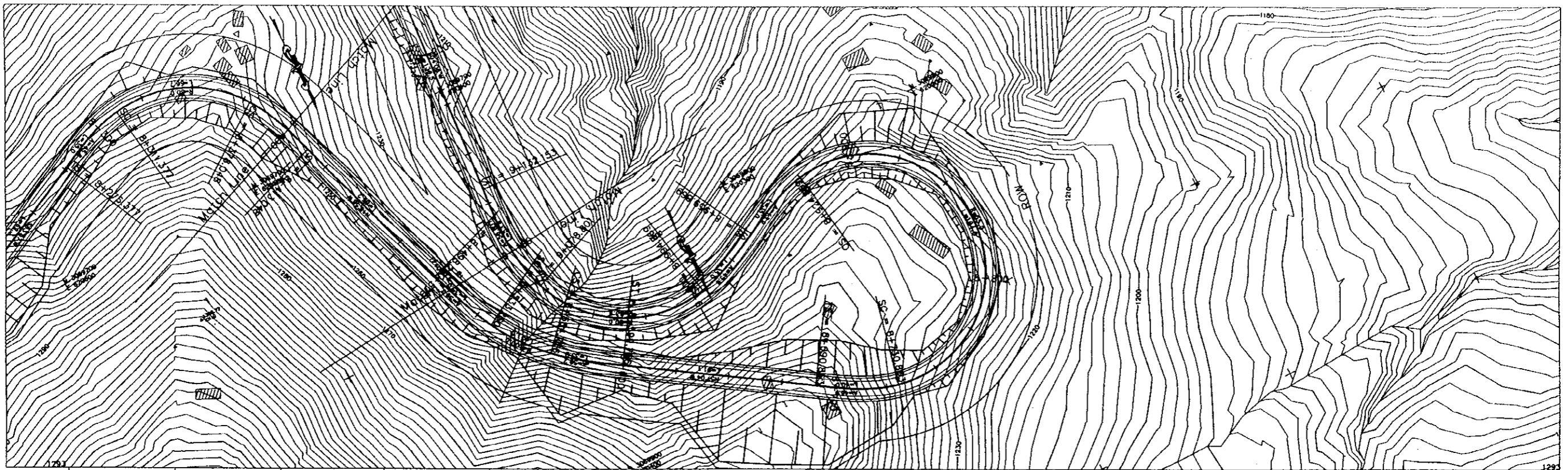
PROFILE																													
FINISHED GRADE	1317.145	1315.895	1314.645	1313.395	1312.145	1310.895	1309.645	1308.395	1307.145	1305.895	1304.645	1303.395	1302.145	1300.895	1299.645	1298.395	1297.145	1295.895	1294.645	1293.395	1292.145	1290.895	1289.645	1288.395	1287.145	1285.895	1284.645	1283.395	1282.145
EXISTING GROUND	1323.868	1319.372	1314.087	1311.362	1302.463	1310.515	1311.055	1305.930	1302.045	1311.959	1308.700	1305.755	1298.432	1305.867	1287.287	1293.747	1298.111	1286.292	1294.850	1285.278	1292.145	1273.280	1283.117	1281.503	1284.642	1290.874	1281.481	1275.042	
STATION	7+000	7+025	7+050	7+075	7+100	7+125	7+150	7+175	7+200	7+225	7+250	7+275	7+300	7+325	7+350	7+375	7+400	7+425	7+450	7+475	7+500	7+525	7+550	7+575	7+600	7+625	7+650	7+675	7+700
HORIZONTAL ALIGNMENT	<p> <math>R=60</math> <math>7+036.321</math> <math>A=45.826</math> <math>7+071.321</math> <math>7+168.223</math> <math>A=52.082</math> <math>7+213.387</math> <math>R=60</math> <math>7+258.565</math> <math>A=45.826</math> <math>7+283.565</math> <math>R=60</math> <math>7+431.453</math> <math>A=45.826</math> <math>7+468.453</math> <math>R=60</math> <math>7+561.539</math> <math>A=45.826</math> <math>7+628.539</math> <math>R=60</math> </p>																												

PROJECT NAME	CLIENT	CONSULTANT	DWG TITLE	DWG NO.
THE FEASIBILITY STUDY ON THE CONSTRUCTION OF KATHMANDU - NAUBISE ALTERNATE ROAD IN THE KINGDOM OF NEPAL	JAPAN INTERNATIONAL COOPERATION AGENCY HIS MAJESTY'S GOVERNMENT OF NEPAL MINISTRY OF PHYSICAL PLANNING AND WORKS DEPARTMENT OF ROADS	 NIPPON KOEI CO., LTD. Consulting Engineers Tokyo, JAPAN	PLAN AND PROFILE STA.7+000 to STA.7+700	Hw-15



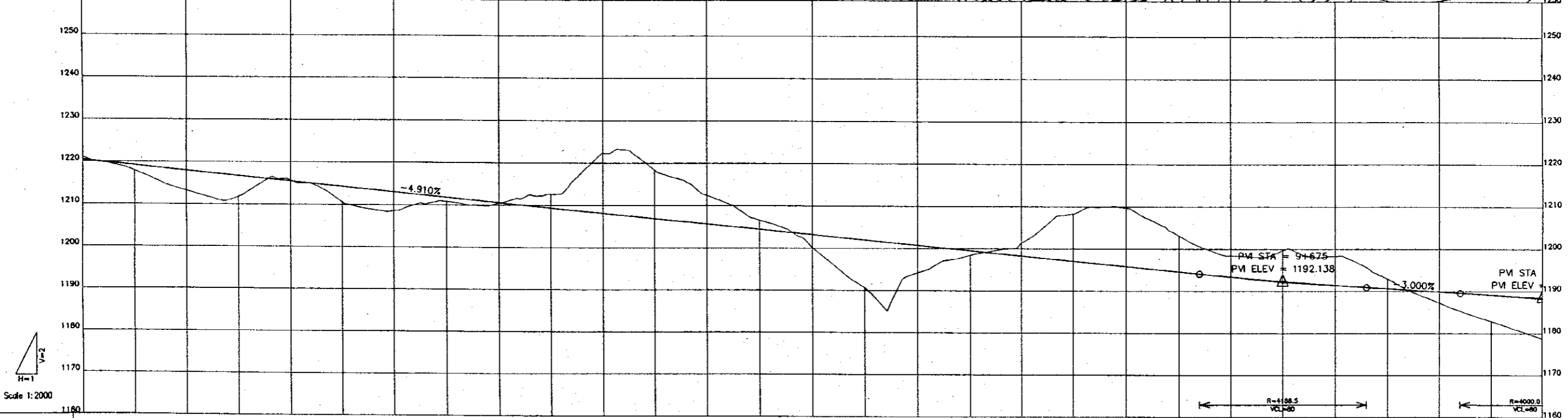
PROFILE																													
FINISHED GRADE	1282.145	1280.895	1278.645	1278.395	1277.145	1275.895	1274.645	1273.395	1272.145	1269.895	1268.645	1267.395	1266.145	1264.895	1263.645	1262.395	1261.145	1259.895	1258.645	1257.395	1256.145	1254.895	1253.645	1252.395	1251.145	1249.895	1248.645	1247.395	
EXISTING GROUND	1275.042	1275.649	1275.896	1278.395	1275.095	1272.146	1275.895	1277.768	1284.612	1269.861	1272.145	1271.917	1268.677	1268.787	1272.539	1265.528	1262.145	1243.978	1246.588	1263.568	1265.212	1264.043	1253.944	1251.501	1251.453	1250.654	1255.846	1255.662	1250.273
STATION	7+700	7+725	7+750	7+775	7+800	7+825	7+850	7+875	7+900	7+925	7+950	7+975	8+000	8+025	8+050	8+075	8+100	8+125	8+150	8+175	8+200	8+225	8+250	8+275	8+300	8+325	8+350	8+375	8+400
HORIZONTAL ALIGNMENT	$7+709.450$ $A=45.826$ $R=50$ $7+757.289$ $A=45.826$ $R=50$ $7+792.289$ $A=56.125$ $7+827.288$ $R=50$ $7+858.826$ $A=54.125$ $7+893.826$ $R=80$ $8+015.187$ $A=45.826$ $8+050.197$ $A=45.826$ $R=80$ $8+178.074$ $A=45.826$ $R=80$ $8+214.074$ $R=80$ $8+278.377$ $A=45.826$ $8+313.377$ $R=80$ $8+378.048$ $A=45.826$																												

PROJECT NAME	CLIENT	CONSULTANT	DWG TITLE	DWG NO.
THE FEASIBILITY STUDY ON THE CONSTRUCTION OF KATHMANDU - NAUBISE ALTERNATE ROAD IN THE KINGDOM OF NEPAL	JAPAN INTERNATIONAL COOPERATION AGENCY HIS MAJESTY'S GOVERNMENT OF NEPAL MINISTRY OF PHYSICAL PLANNING AND WORKS DEPARTMENT OF ROADS	 NIPPON KOEI CO., LTD. Consulting Engineers Tokyo, JAPAN	PLAN AND PROFILE STA.7+700 to STA.8+400	Hw-16



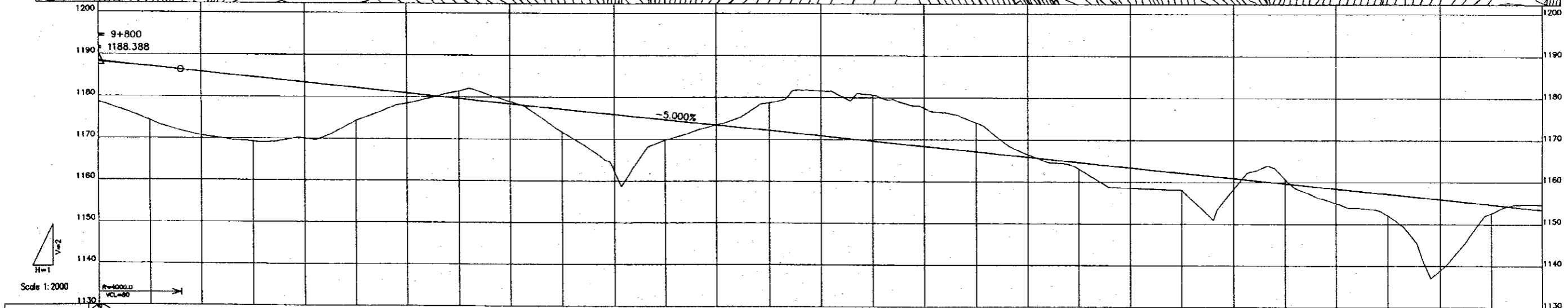
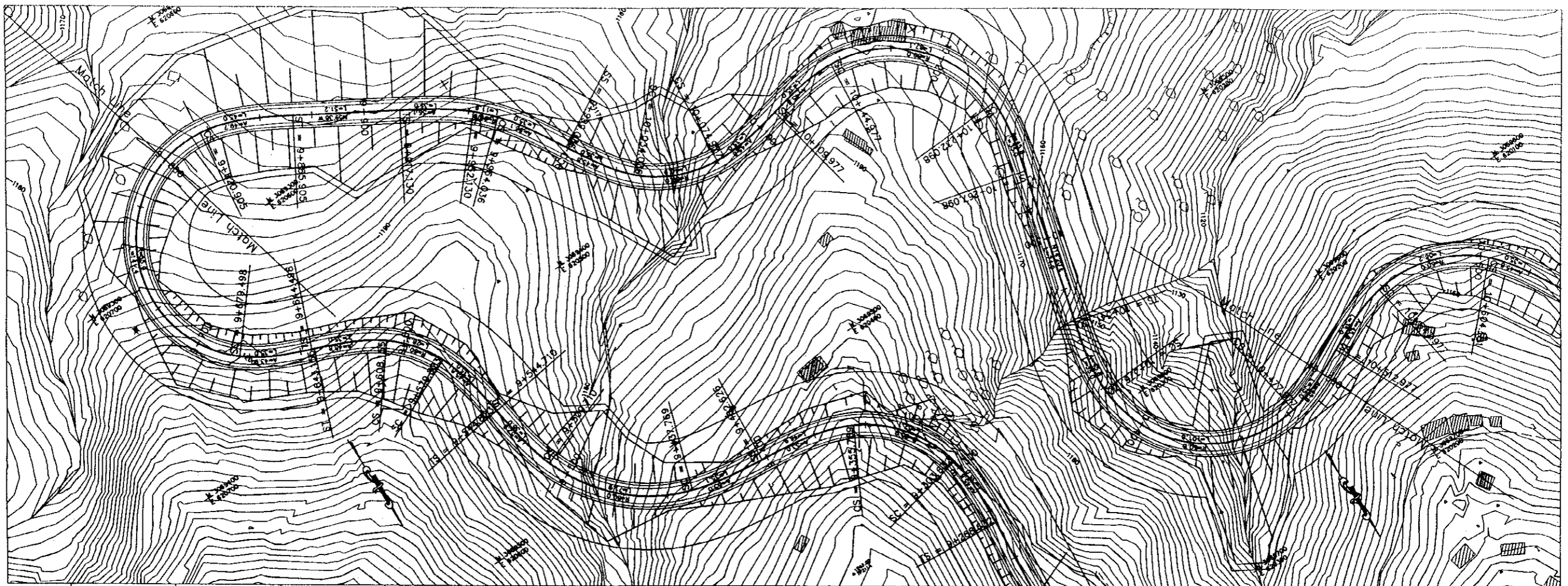
PROFILE																													
FINISHED GRADE	8+400	8+425	8+450	8+475	8+500	8+525	8+550	8+575	8+600	8+625	8+650	8+675	8+700	8+725	8+750	8+775	8+800	8+825	8+850	8+875	8+900	8+925	8+950	8+975	9+000	9+025	9+050	9+075	9+100
EXISTING GROUND	1250.273	1245.137	1243.144	1242.885	1243.358	1241.078	1236.401	1240.922	1238.648	1242.173	1232.813	1233.586	1237.145	1236.462	1232.867	1232.743	1228.815	1230.425	1222.486	1221.968	1223.146	1225.070	1222.486	1221.968	1223.146	1224.508	1221.977	1220.633	1220.987
STATION	8+400	8+425	8+450	8+475	8+500	8+525	8+550	8+575	8+600	8+625	8+650	8+675	8+700	8+725	8+750	8+775	8+800	8+825	8+850	8+875	8+900	8+925	8+950	8+975	9+000	9+025	9+050	9+075	9+100
HORIZONTAL ALIGNMENT	A=45.825 R=∞		A=113.048 R=∞		A=39.761 R=∞		A=53.280 R=100		A=264.756 R=∞		A=66.904 R=∞		A=730.063 R=35		A=45.825 R=∞		A=45.825 R=∞		A=45.825 R=∞		A=45.825 R=∞		A=45.825 R=∞		A=45.825 R=∞		A=45.825 R=∞		

PROJECT NAME	CLIENT	CONSULTANT	DWG TITLE	DWG NO.
THE FEASIBILITY STUDY ON THE CONSTRUCTION OF KATHMANDU - NAUBISE ALTERNATE ROAD IN THE KINGDOM OF NEPAL	JAPAN INTERNATIONAL COOPERATION AGENCY HIS MAJESTY'S GOVERNMENT OF NEPAL MINISTRY OF PHYSICAL PLANNING AND WORKS DEPARTMENT OF ROADS	NIPPON KOEI CO., LTD. Consulting Engineers Tokyo, JAPAN	PLAN AND PROFILE STA.8+400 to STA.9+100	Hw-17



PROFILE	STATIONING																												
FINISHED GRADE	1220.370	1219.143	1217.915	1216.688	1215.460	1214.233	1213.005	1211.778	1210.550	1209.323	1208.095	1206.868	1205.640	1204.413	1203.185	1201.958	1200.730	1199.503	1198.275	1197.048	1195.820	1194.593	1193.365	1192.138	1189.188				
EXISTING GROUND	1220.997	1217.877	1213.182	1211.768	1212.642	1210.570	1208.538	1210.820	1210.440	1212.654	1222.235	1218.415	1212.382	1206.573	1200.084	1190.611	1184.236	1198.423	1201.462	1208.208	1209.688	1203.109	1198.379	1199.686	1198.319	1187.231	1178.717		
STATION	9+100	9+125	9+150	9+175	9+200	9+225	9+250	9+275	9+300	9+325	9+350	9+375	9+400	9+425	9+450	9+475	9+500	9+525	9+550	9+575	9+600	9+625	9+650	9+675	9+700	9+725	9+750	9+775	9+800
HORIZONTAL ALIGNMENT	A=58.578 9+132.153		R=∞		9+288.632		A=45.876 9+303.632		R=60		9+385.789		A=53.021 9+437.789		R=80		9+508.710		A=52.915 9+544.710		R=80		9+644.488		A=43.824 9+672.488		R=155		

PROJECT NAME	CLIENT	CONSULTANT	DWG TITLE	DWG NO.
THE FEASIBILITY STUDY ON THE CONSTRUCTION OF KATHMANDU - NAUBISE ALTERNATE ROAD IN THE KINGDOM OF NEPAL	JAPAN INTERNATIONAL COOPERATION AGENCY HIS MAJESTY'S GOVERNMENT OF NEPAL MINISTRY OF PHYSICAL PLANNING AND WORKS DEPARTMENT OF ROADS	NIPPON KOEI CO., LTD. Consulting Engineers Tokyo, JAPAN	PLAN AND PROFILE STA.9+100 to STA.9+800	Hw-18



PROFILE	Stationing: 9+800 to 10+500																				
FINISHED GRADE	1188.388																				
EXISTING GROUND	1178.717	1174.240	1170.671	1165.888	1160.214	1154.638	1148.022	1141.388	1134.744	1128.100	1121.454	1114.808	1108.162	1101.516	1094.870	1088.224	1081.578	1074.932	1068.286	1061.640	
STATION	9+800	9+825	9+850	9+875	9+900	9+925	9+950	9+975	10+000	10+025	10+050	10+075	10+100	10+125	10+150	10+175	10+200	10+225	10+250	10+275	
HORIZONTAL ALIGNMENT	BASS 9+520.905 A=49.749 9+805.905 R=∞ 9+917.130 A=54.125 9+922.130 9+924.038 A=56.125 9+999.038 A=45.826 10+034.038 R=60 10+074.977 A=45.826 10+108.977 A=45.826 10+144.977 R=60 10+222.088 A=45.826 10+287.088 R=∞ 10+341.130 A=45.826 10+378.130 R=60 10+477.977 A=45.826																				

PROJECT NAME	CLIENT	CONSULTANT	DWG TITLE	DWG NO.
THE FEASIBILITY STUDY ON THE CONSTRUCTION OF KATHMANDU - NAUBISE ALTERNATE ROAD IN THE KINGDOM OF NEPAL	JAPAN INTERNATIONAL COOPERATION AGENCY HIS MAJESTY'S GOVERNMENT OF NEPAL MINISTRY OF PHYSICAL PLANNING AND WORKS DEPARTMENT OF ROADS	NIPPON KOEI CO., LTD. Consulting Engineers Tokyo, JAPAN	PLAN AND PROFILE STA.9+800 to STA.10+500	Hw-19