

図-5

レシフェ都市圏の下水道既存施設

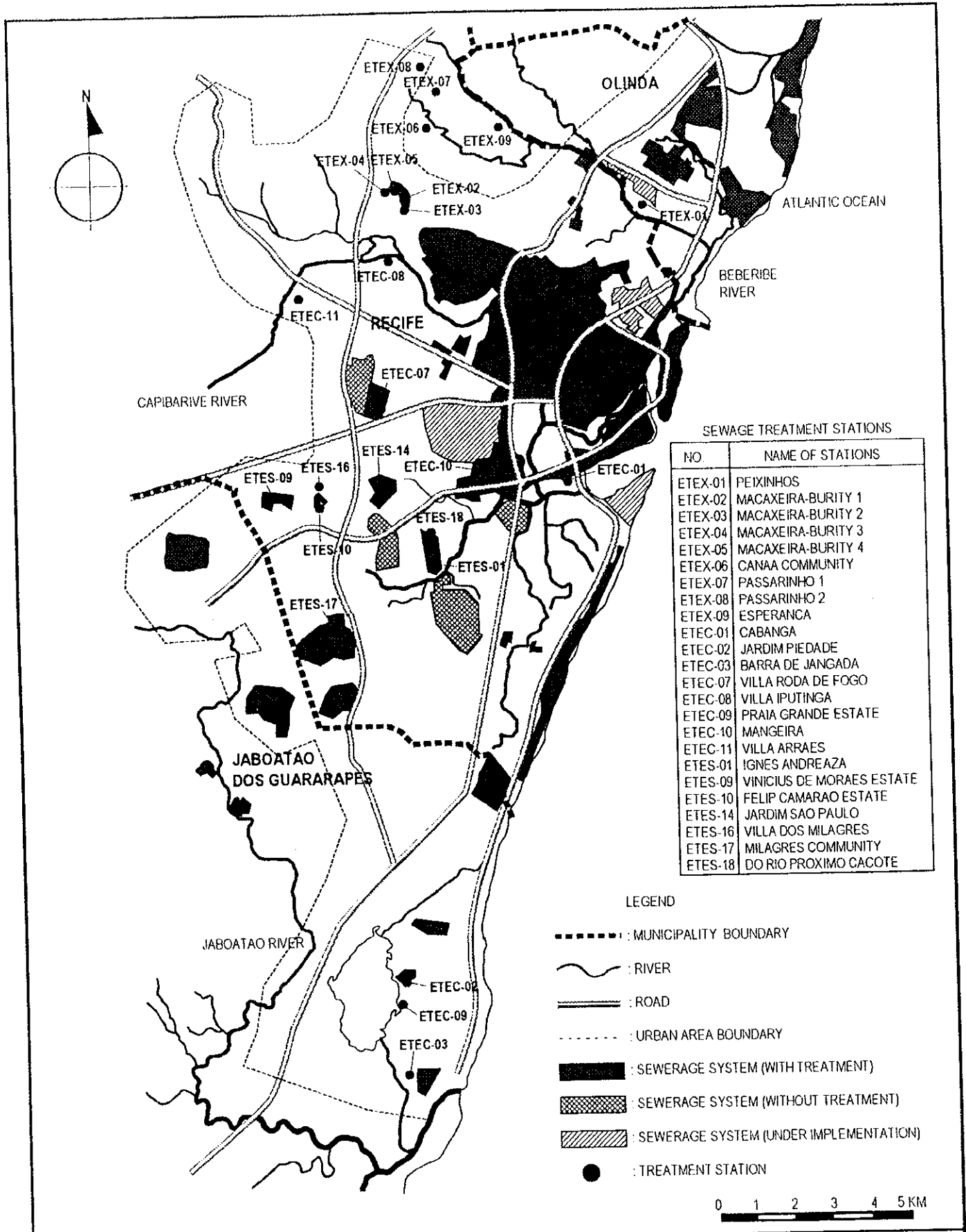


図- 2

レシフェ都市圏中心部の下水道既存施設

THE STUDY ON STORMWATER DRAINAGE AND SEWERAGE MANAGEMENT PLAN FOR RMR

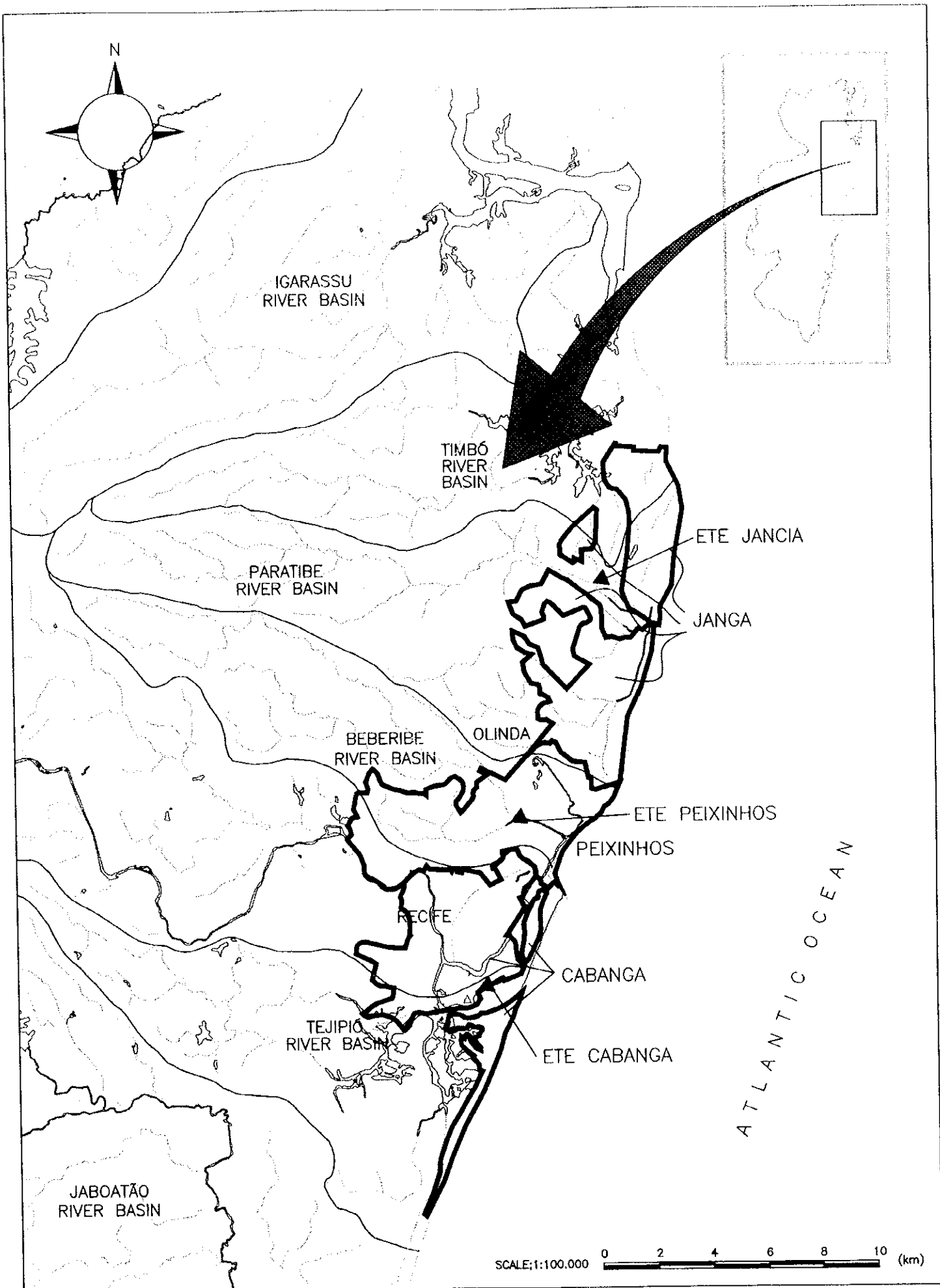


図-3

主要下水処理場処理区 (ジャンガ、ペンシニョ、カバンガ)

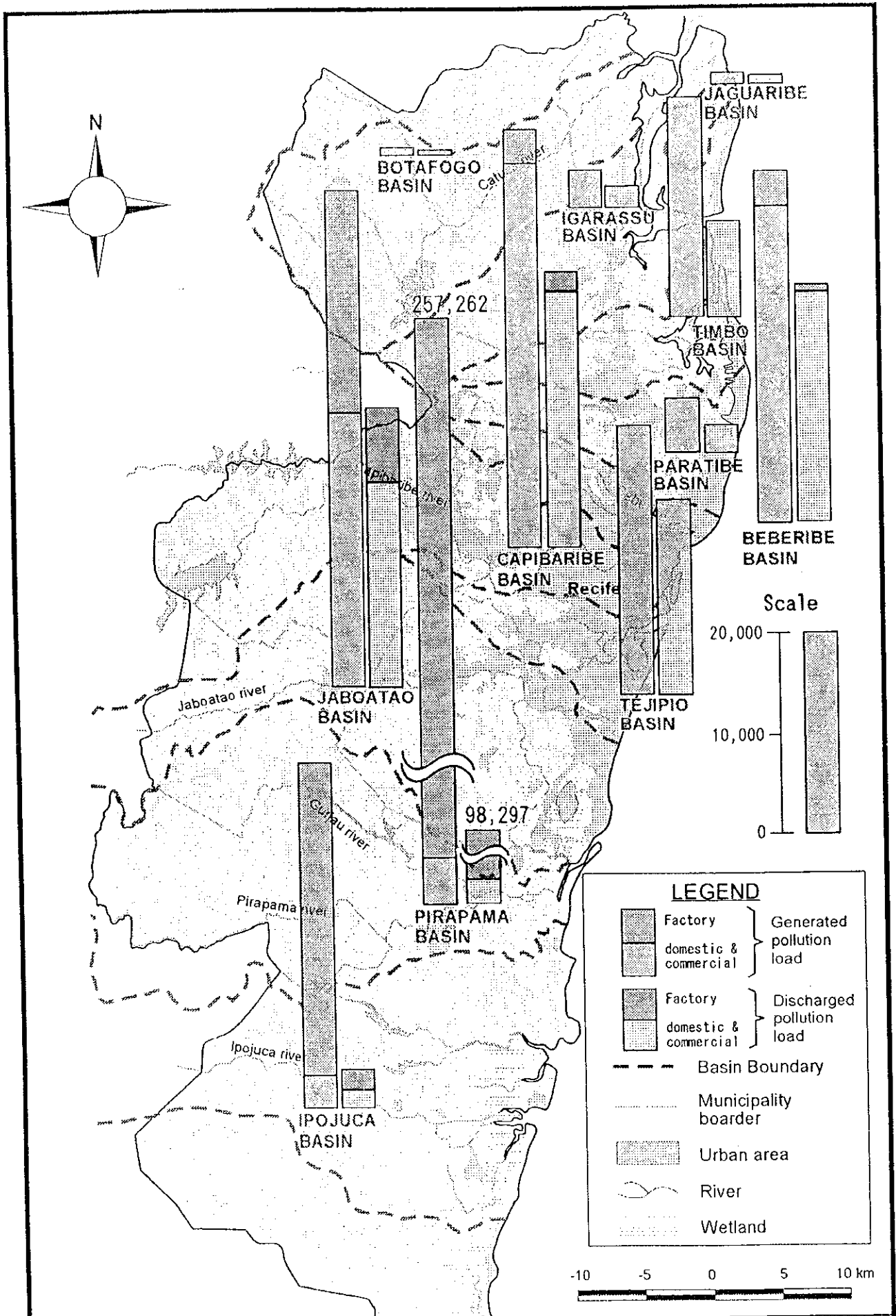
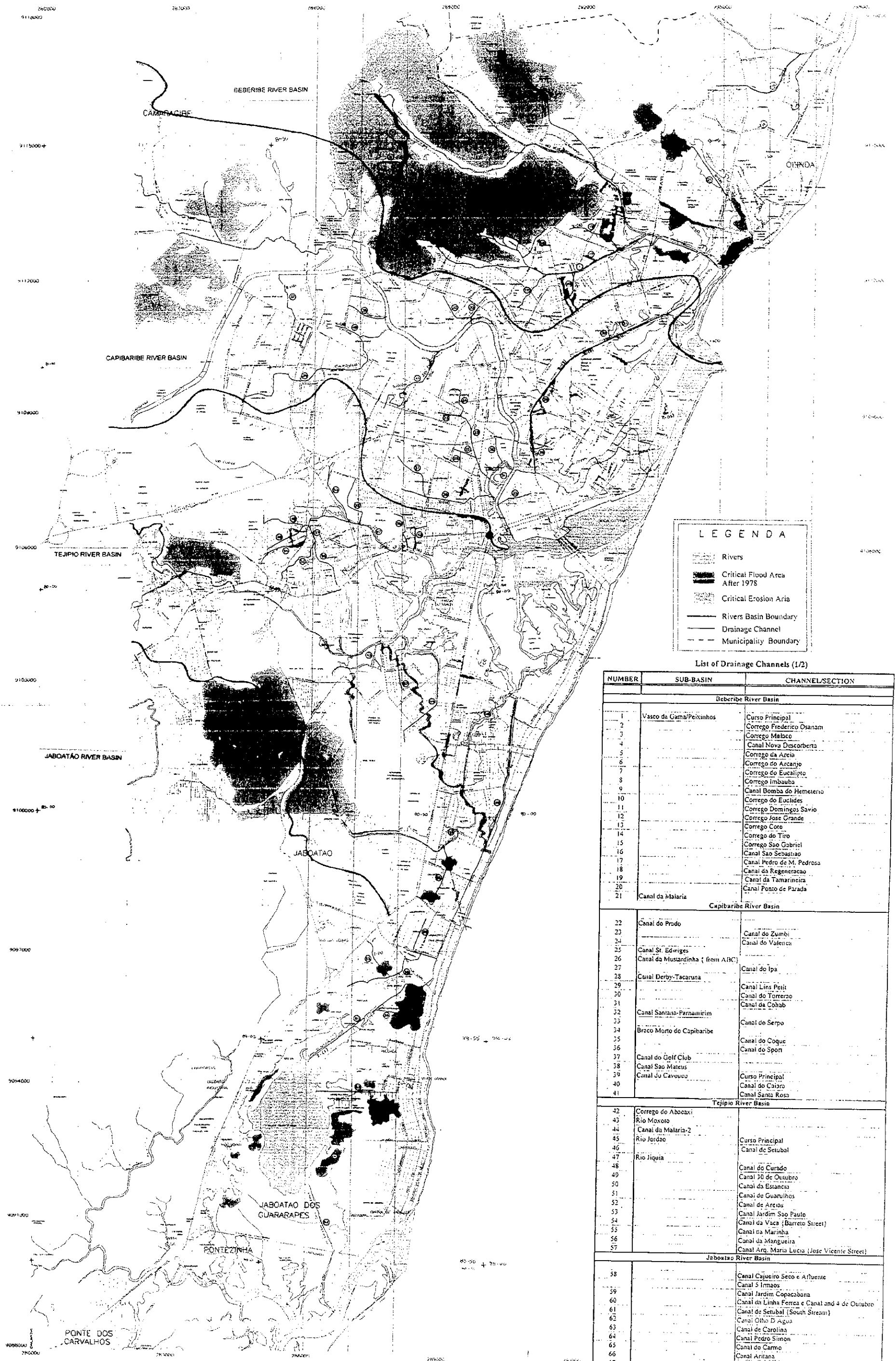


図-4

レシフェ都市圏の汚濁負荷量



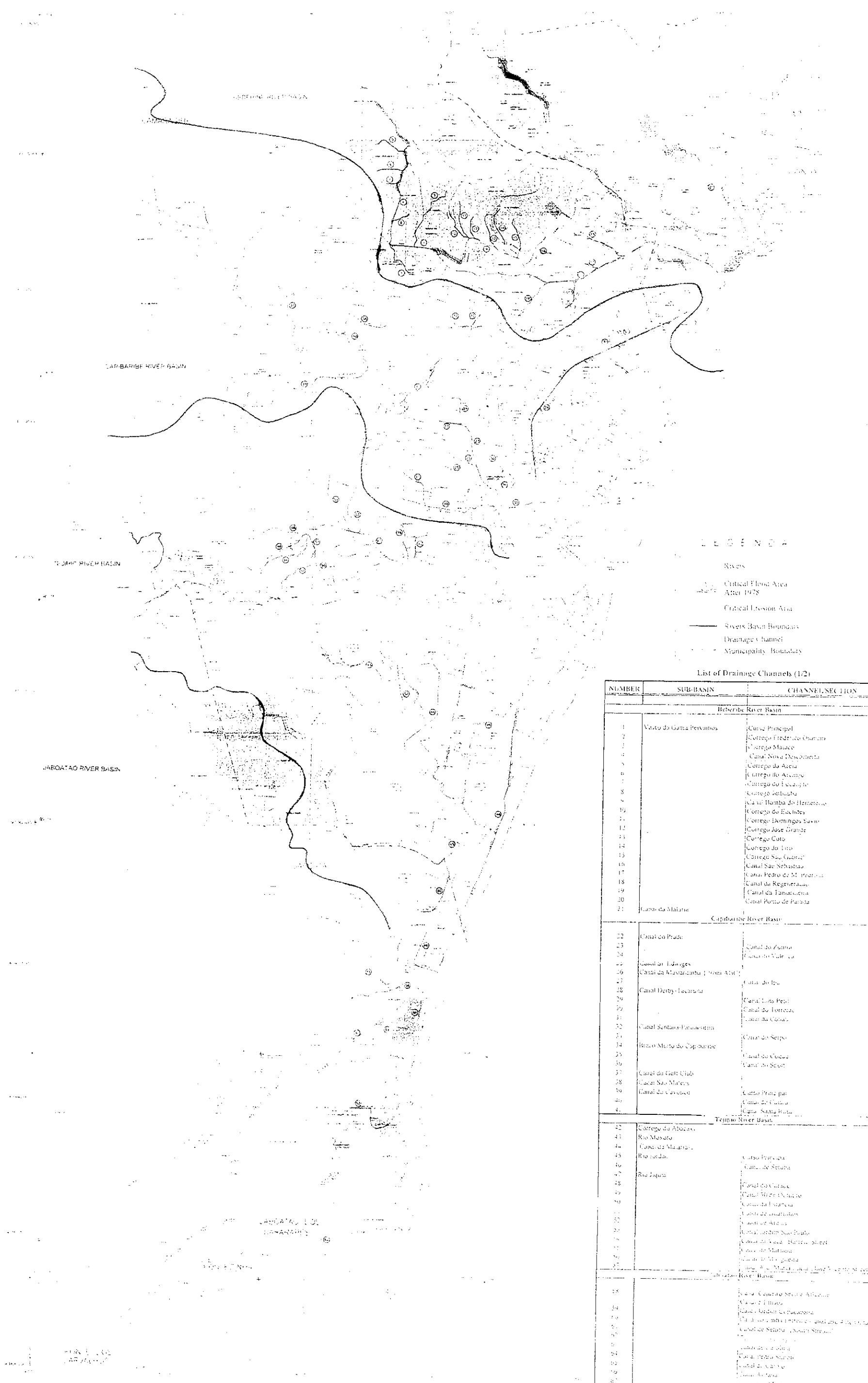
LEGENDA

- Rivers
- Critical Flood Area After 1978
- Critical Erosion Area
- Rivers Basin Boundary
- Drainage Channel
- Municipality Boundary

List of Drainage Channels (1/2)

NUMBER	SUB-BASIN	CHANNEL/SECTION
Beberibe River Basin		
1	Vasco da Gama/Peixinhos	Curso Principal
2		Corrego Frederico Osanam
3		Corrego Maluco
4		Canal Nova Descoberta
5		Corrego da Areia
6		Corrego do Arcanjo
7		Corrego do Eucalipto
8		Corrego Imbauba
9		Canal Bomba de Hemeterio
10		Corrego do Euclides
11		Corrego Domingos Savio
12		Corrego Jose Grande
13		Corrego Cora
14		Corrego do Tiro
15		Corrego Sao Gabriel
16		Canal Sao Sebastiao
17		Canal Pedro de M. Pedrosa
18		Canal da Regeneracao
19		Canal da Tamarineira
20		Canal Ponto de Parada
21	Canal da Malaria	
Capibaribe River Basin		
22	Canal do Prado	
23		Canal do Zumbi
24		Canal do Valencio
25	Canal St. Edwiges	
26	Canal da Mustardinha (from A.R.C.)	
27		Canal do Ipa
28	Canal Derby-Tacaruna	
29		Canal Lins Petit
30		Canal do Torrero
31		Canal da Colhab
32	Canal Santana-Parnaitrim	
33		Canal do Serpo
34	Broco Morto do Capibaribe	
35		Canal do Coque
36		Canal do Spon
37	Canal do Golf Club	
38	Canal Sao Mateus	
39	Canal Ju Cavouco	
40		Curso Principal
41		Canal do Caiaro
		Canal Santa Rosa
Tejipto River Basin		
42	Corrego do Abocaxi	
43	Rio Moxoto	
44	Canal da Malaria-2	
45	Rio Jordao	
46		Curso Principal
47		Canal de Setubal
48		
49		Canal do Curdo
50		Canal 20 de Outubro
51		Canal da Estancia
52		Canal de Guarulhos
53		Canal de Arcoz
54		Canal Jardim Sao Paulo
55		Canal da Vaca (Barreto Street)
56		Canal da Marinha
57		Canal da Mangueira
		Canal Arg. Maria Lucia (Jose Vicente Street)
Jabotão River Basin		
58		Canal Cajueiro Seco e Afluente
59		Canal 5 Irmaos
60		Canal Jardim Copacabana
61		Canal da Linha Ferrea e Canal and 4 de Outubro
62		Canal de Setubal (South Stream)
63		Canal Olho D Agua
64		Canal de Carolina
65		Canal Pedro Simon
66		Canal do Carmo
67		Canal Aritana
68		Canal Rio Morto
69		Canal Bultrins
		Canal do Matadouro

图-5 雨水排水地域 (1978年)



LEGENDA

- Rivers
- Critical Flood Area After 1978
- - - - Critical Division Area
- Rivers Basin Boundaries
- Drainage Channel
- - - - Municipality Boundary

List of Drainage Channels (1/2)

NUMBER	SUB-BASIN	CHANNEL SECTION
Heberbe River Basin		
1	Vale do Gama Perceiros	Curso Principal
2		Corrego Frederico Chaves
3		Corrego Mauace
4		Canal Nova Descoberta
5		Corrego do Azeite
6		Corrego do Arco
7		Corrego do Escalante
8		Corrego Anticoba
9		Canal Bomba do Hametoso
10		Corrego do Rio Preto
11		Corrego Domingos Sampaio
12		Corrego Jose Grande
13		Corrego Coto
14		Corrego do Ivo
15		Corrego Sao Gabriel
16		Canal Sao Sebastiao
17		Canal Pedro de M. Moreira
18		Canal do Regeneracao
19		Canal da Tamarizena
20		Canal Ponta de Paraiso
21		Lagoa da Malhada
Capibaribe River Basin		
22	Canal do Prado	Canal do Zumbi
23		Canal do Vale da
24	Canal de Indagos	Canal do Rio
25		Canal de Matarizinha (Form. Ant.)
26	Canal Derby-Lacimada	Canal do Rio
27		Canal do Rio
28	Canal Derby-Lacimada	Canal do Rio
29		Canal do Rio
30	Canal Derby-Lacimada	Canal do Rio
31		Canal do Rio
32	Canal Santos-Fernandes	Canal do Rio
33		Canal do Rio
34	Rio do Monte do Capibaribe	Canal do Rio
35		Canal do Rio
36	Canal do Monte do Capibaribe	Canal do Rio
37		Canal do Rio
38	Canal do Monte do Capibaribe	Canal do Rio
39		Canal do Rio
40	Canal do Monte do Capibaribe	Canal do Rio
41		Canal do Rio
Tejuco River Basin		
42	Corrego do Abacaxi	Canal do Rio
43		Canal do Rio
44	Rio Mesado	Canal do Rio
45		Canal do Rio
46	Rio Mesado	Canal do Rio
47		Canal do Rio
48	Rio Japuta	Canal do Rio
49		Canal do Rio
50	Rio Japuta	Canal do Rio
51		Canal do Rio
52	Rio Japuta	Canal do Rio
53		Canal do Rio
54	Rio Japuta	Canal do Rio
55		Canal do Rio
56	Rio Japuta	Canal do Rio
57		Canal do Rio
58	Rio Japuta	Canal do Rio
59		Canal do Rio

图-5 雨水排水地域 (1978年)

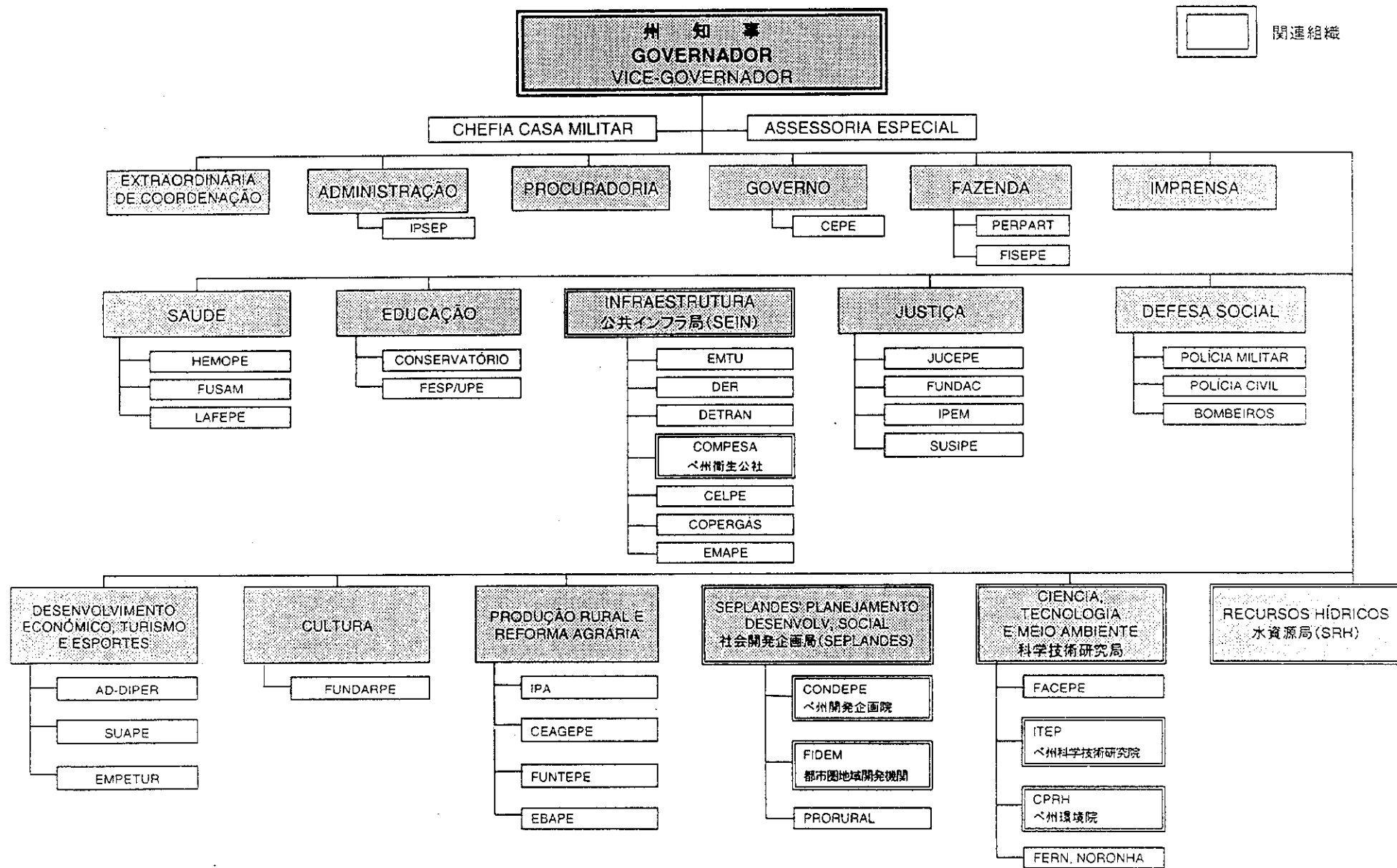


図-6 ペルナンブーコ州の組織

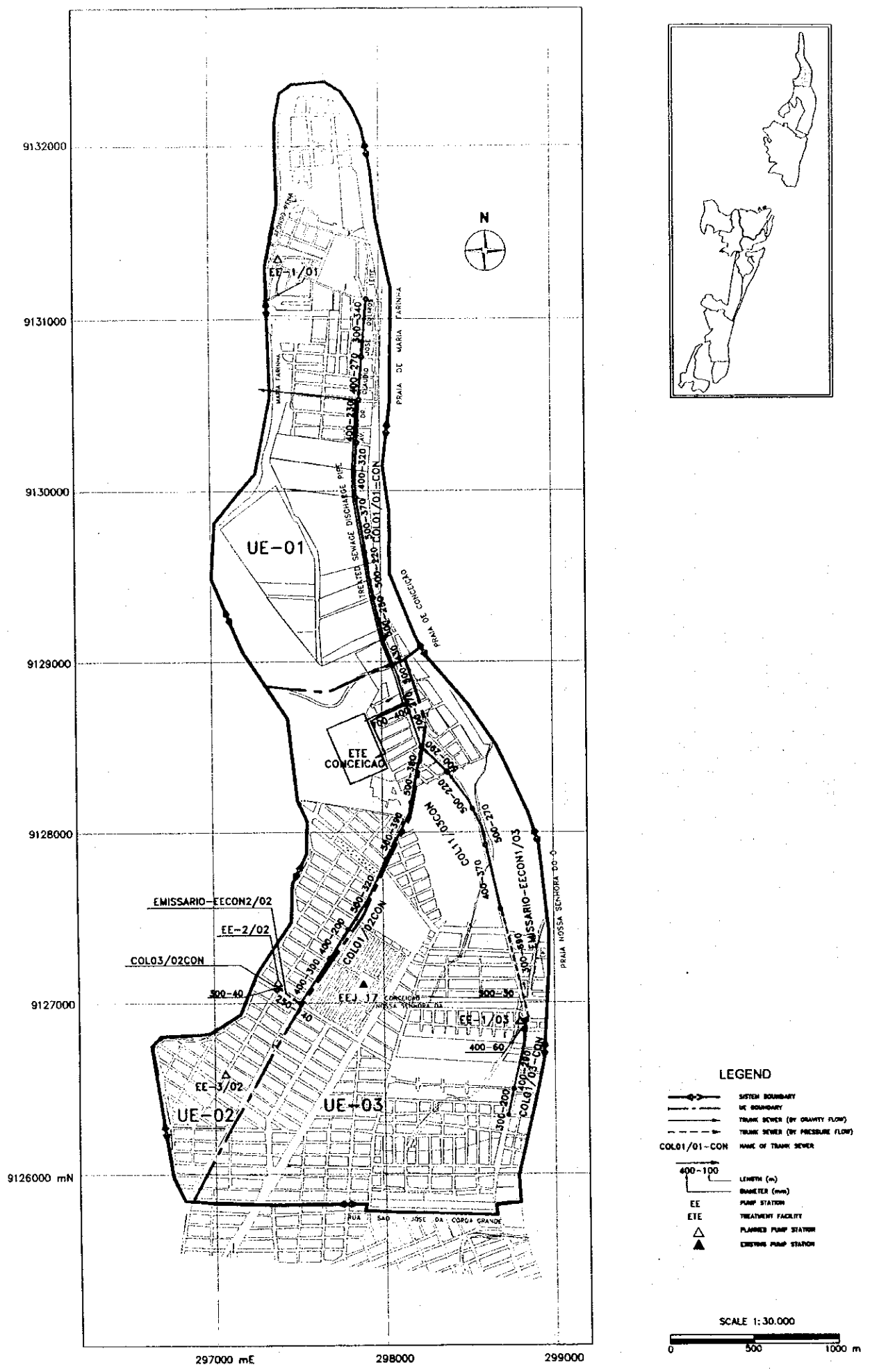


図-7 コンセイスン処理区下水道施設計画平面図

THE STUDY ON STORMWATER DRAINAGE AND SEWERAGE MANAGEMENT PLAN FOR RMR



9128000

9127000

9126000

9125000

9124000

9123000

9122000

9121000

9120000

9119000

9118000

9117000

300000

299000

TIMBO RIVER
SEWAGE DISCHARGE PIPES

ETE
JANGA

UE-04

C-4/04

EE-3/04

EE-1/04

UE-06

EEJ-11

EE-4/04

EEJ-05

EE-3/05

EE-3

AE 3

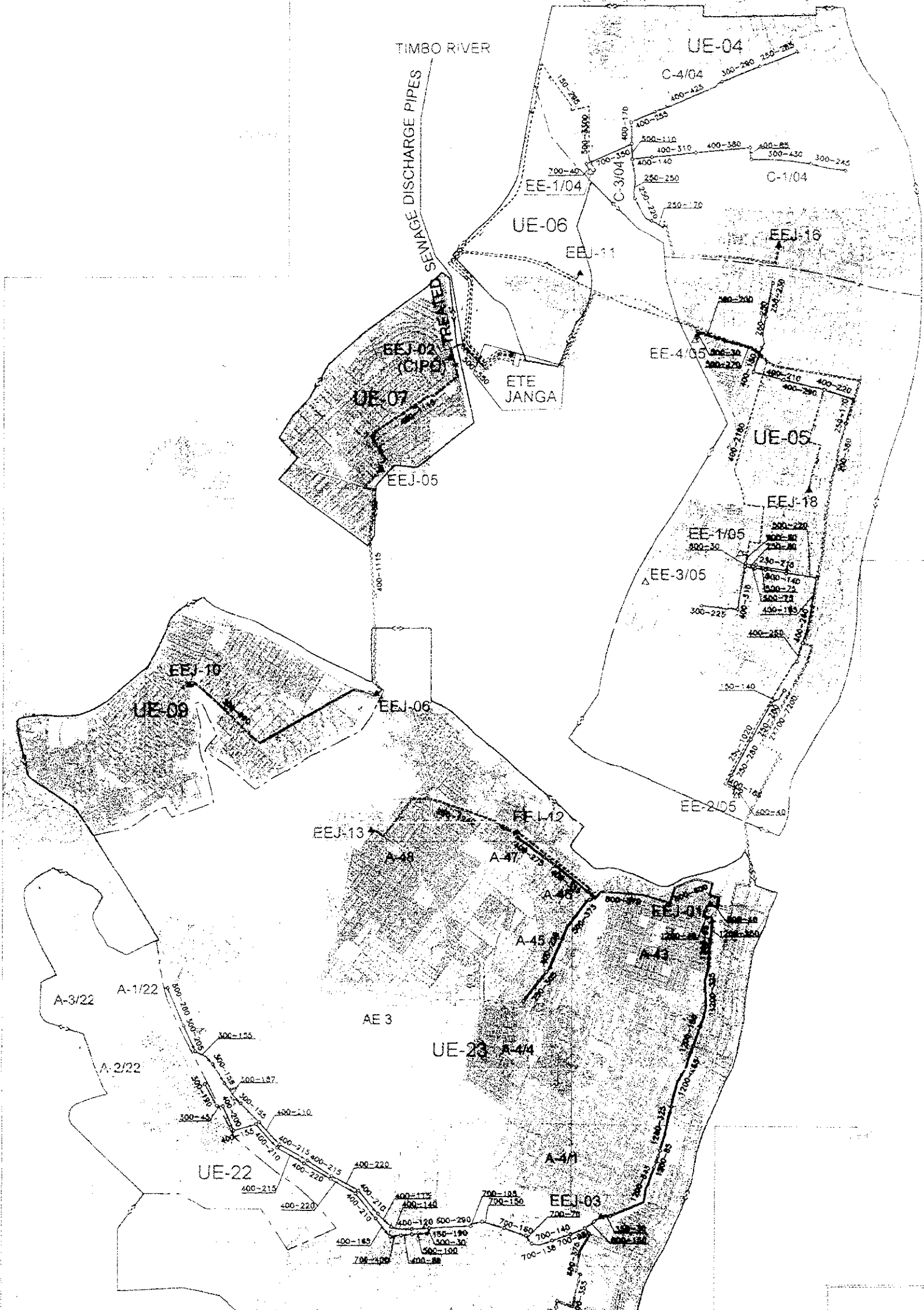
UE-22

A-3/22

A-1/22

A-2/22





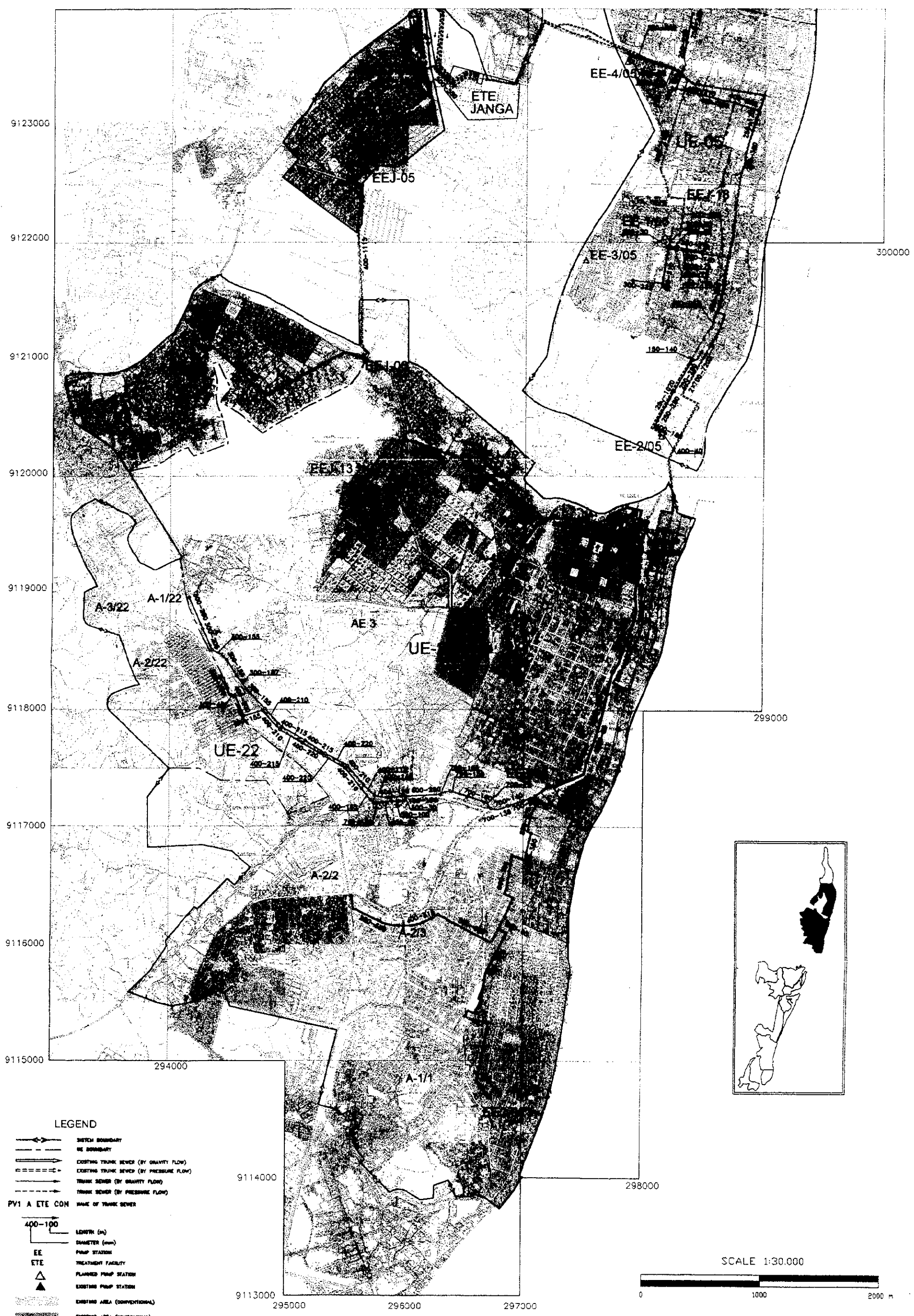


図-8 ジャンガ処理区下水道施設計画平面図
 THE STUDY ON STORMWATER DRAINAGE AND SEWERAGE MANAGEMENT PLAN FOR RMR



図-8

ジャンガ処理区下水道施設計画平面図

9112000

9110000

9109000

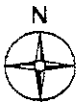
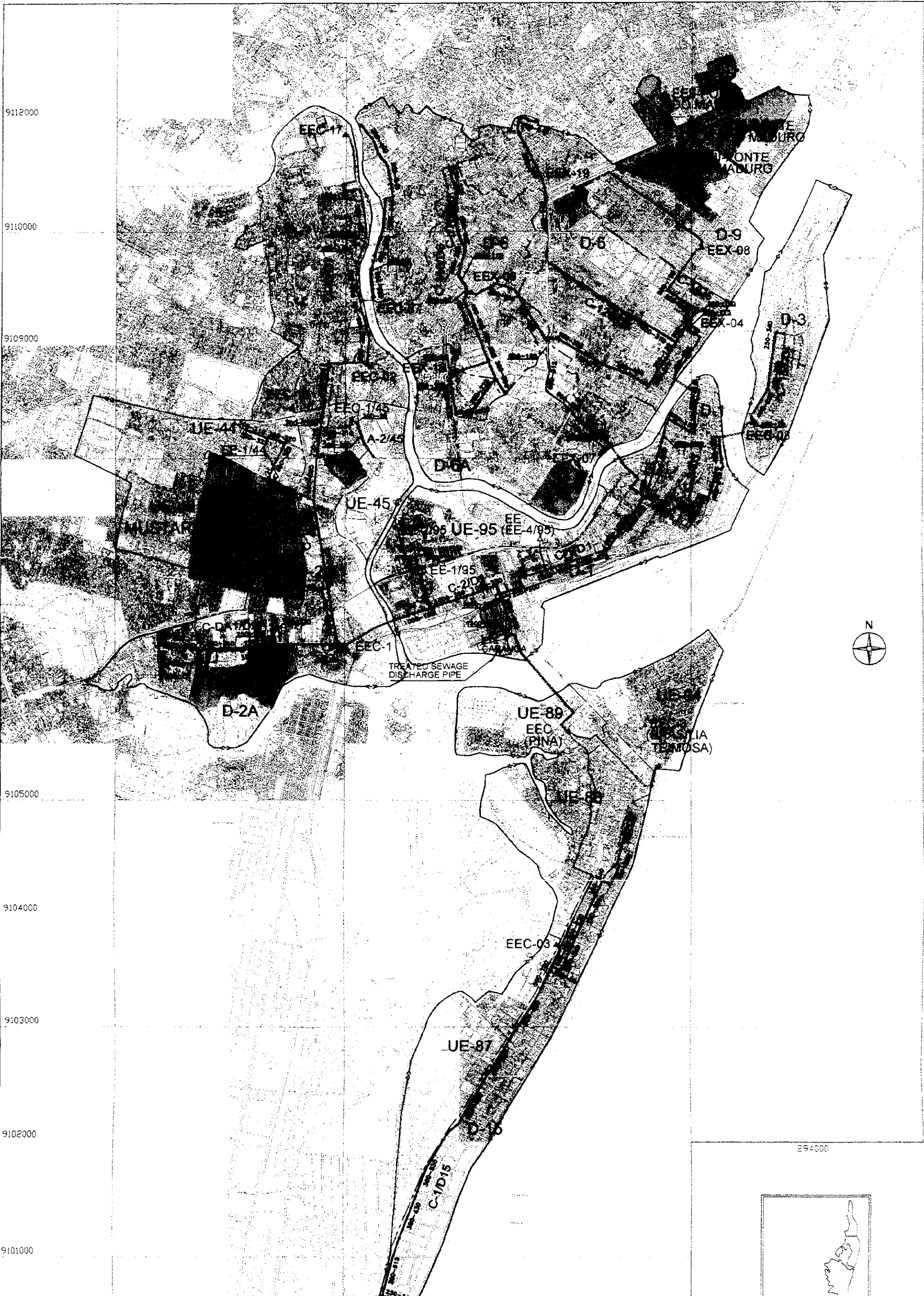
9105000

9104000

9103000

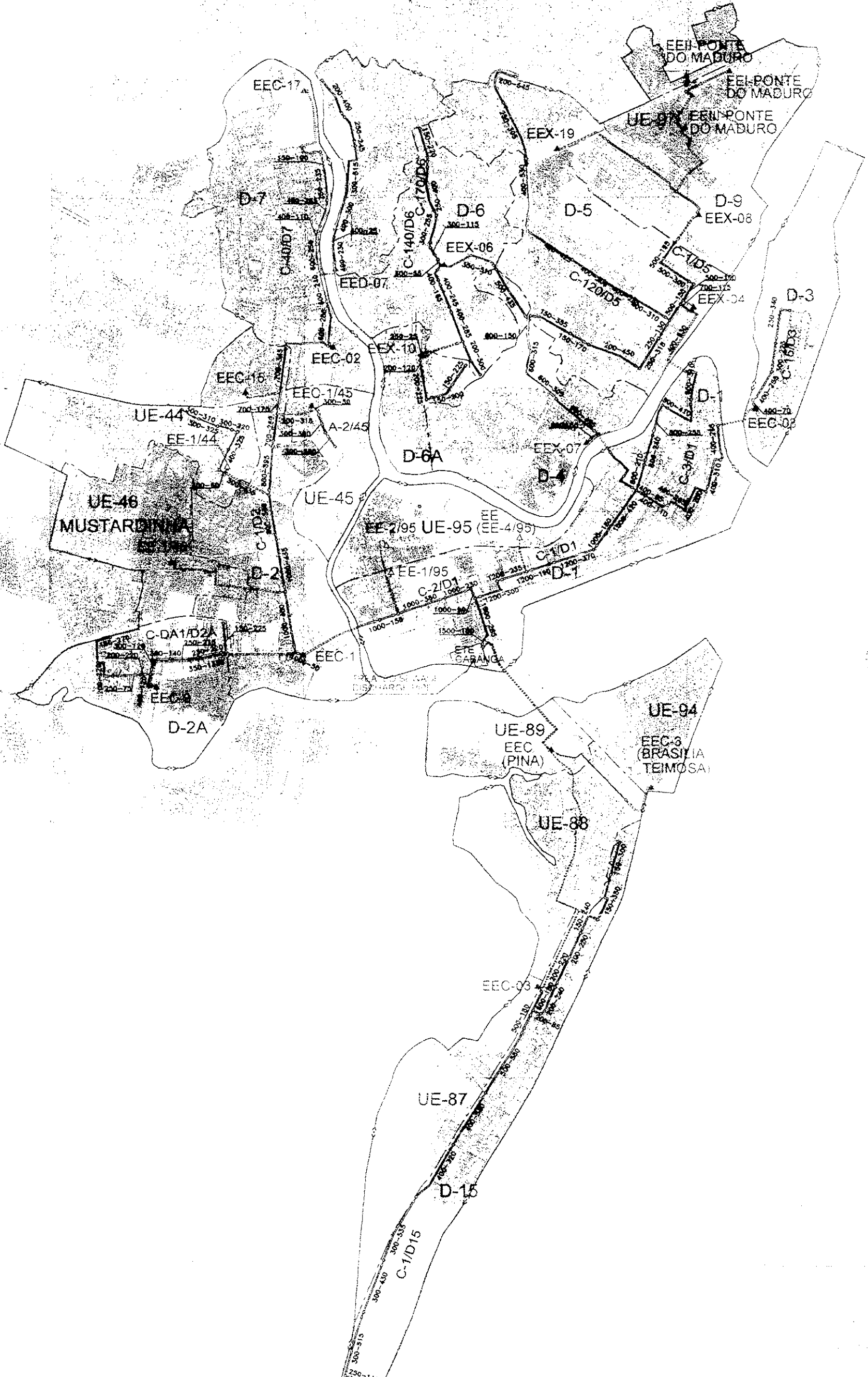
9102000

9101000



254000





UE-46
MUSTARDINHA

UE-89
EEC (PINA)

UE-94
EEC-3
(BRASILIA
TEIMOSA)

EEC-17

EEX-19

EEI-PONTE
DO MADURO

EEI-PONTE
DO MADURO

UE-97
EEI-PONTE
DO MADURO

D-7

D-6

D-5

D-9

EEX-08

C-40/D7

C-140/D6
C-170/D6

C-7/D5

D-3

EED-07

EEX-06

C-120/D5

EEX-04

EEC-16

EEC-02

EEX-10

EEC-1745

A-2/45

UE-44

EE-1/44

D-6A

EEX-07

EEC-03

UE-45

EE-2/95

UE-95

EE-4/95

EE-1/95

C-2/D1

C-1/D1

D-1

C-DA1/D2A

EEC-1

ETE
GARANGA

D-2A

UE-88

UE-88

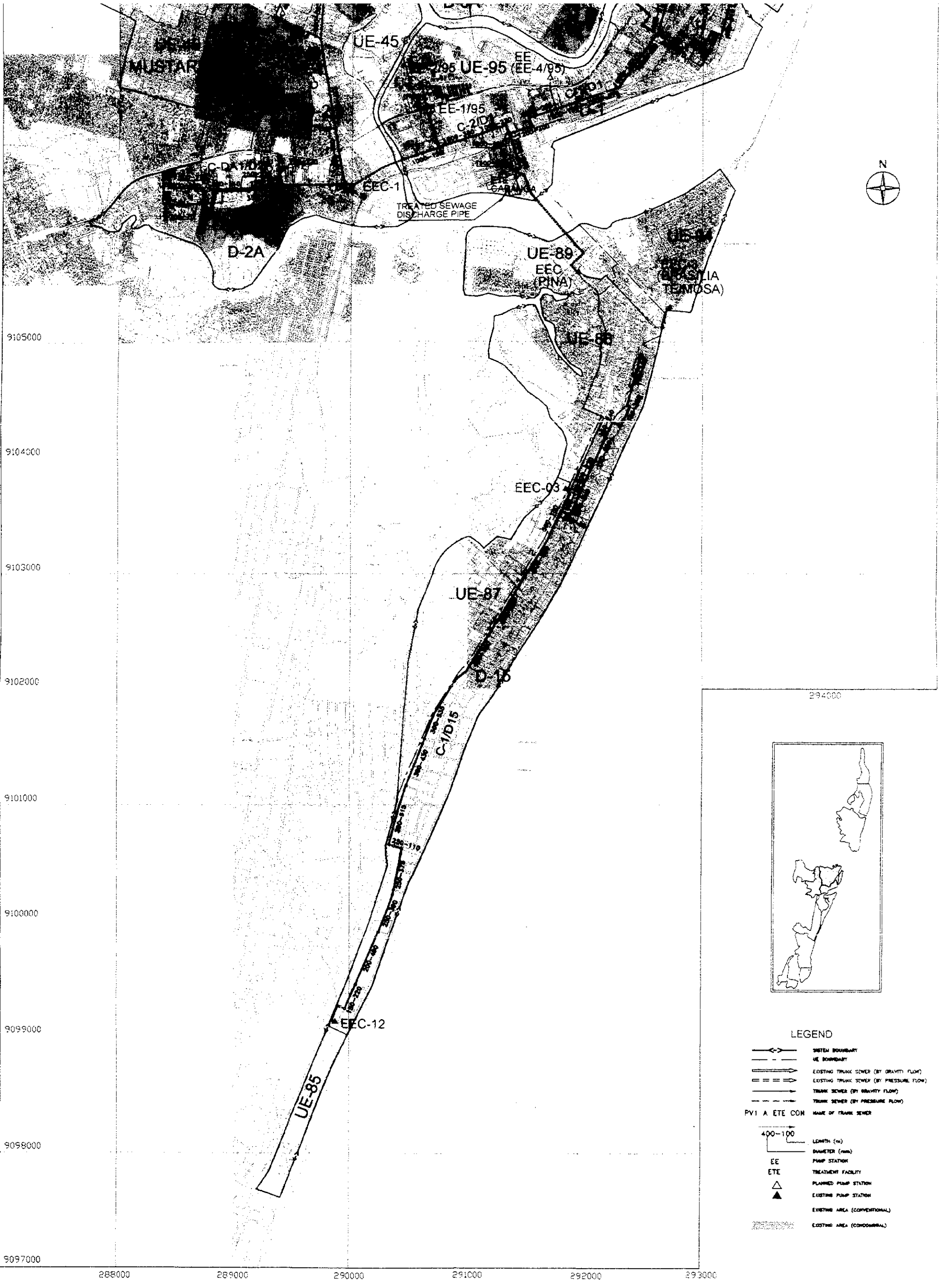
EEC-03

UE-87

D-15

C-1/D15





56

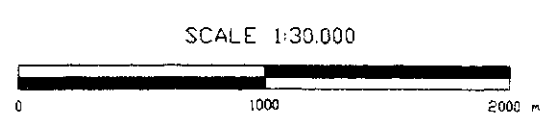
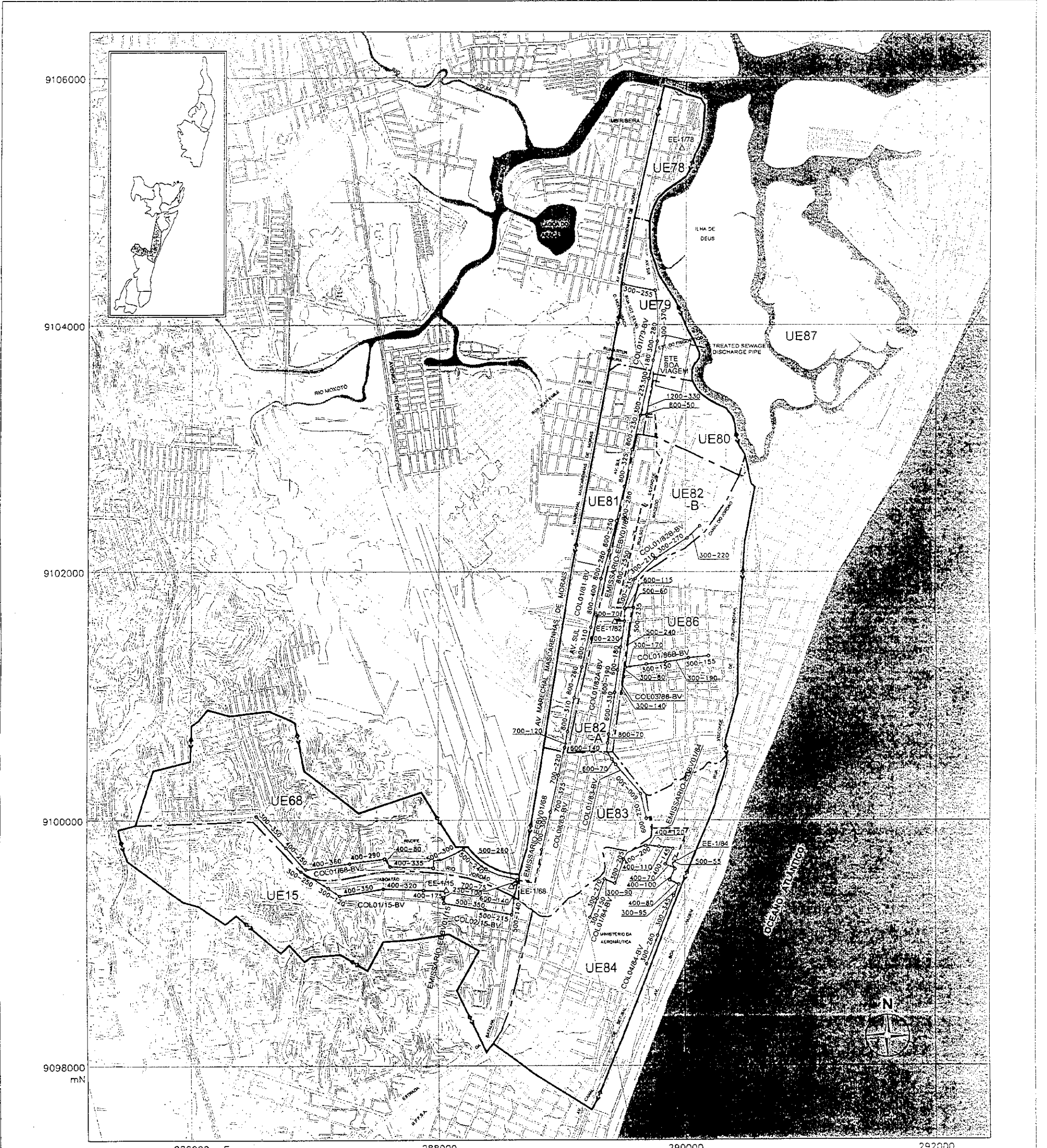


図-9 カバンガア処理区下水道施設計画平面図

THE STUDY ON STORMWATER DRAINAGE AND SEWERAGE MANAGEMENT PLAN FOR RMR



- LEGEND**
- SYSTEM BOUNDARY
 - UE BOUNDARY
 - TRUNK SEWER (BY GRAVITY FLOW)
 - TRUNK SEWER (BY PRESSURE FLOW)
 - COL01/81-BV NAME OF TRUNK SEWER
 - LENGTH (m)
DIAMETER (mm)
 - EE PUMP STATION
 - ETE TREATMENT FACILITY
 - PLANNED PUMP STATION
 - EXISTING PUMP STATION

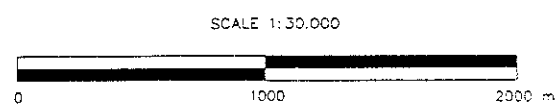


図-10

ポア ヴィアジェン処理区下水道施設計画平面図

THE STUDY ON STORMWATER DRAINAGE AND SEWERAGE MANAGEMENT PLAN FOR RMR

