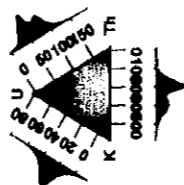


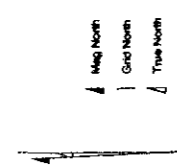
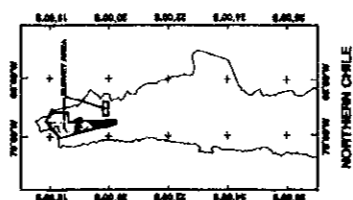
T COOPERATIVE MINERAL EXPLORATION  
 IN THE REGION A-18  
 THE REPUBLIC OF CHILE PHASE II  
 JAPAN INTERNATIONAL COOPERATION AGENCY  
 METAL MINING AGENCY OF JAPAN

ANALYST: GADON PEREZ CASTRINE E.  
 LABORATORY: LABORATORIO  
 CIENCIAS Y TECNICA  
 CIVIL (LIT.), S.A. (Santiago, Chile)  
 SAMPLE MEASUREMENT SYSTEM: MIRA  
 MINING DIGITAL ACQUISITION SYSTEM  
 TRANSMITTER: MIRA 2000  
 THE LUMBERBERRY SYSTEM  
 TRANSMITTER: MIRA 2000  
 MEAN TERAPIANT CLEARANCE: 100 meters  
 DIFFERENTIAL GPS SATELLITE POSITIONING

RADIOMETRIC TERNARY  
 Data Processing  
 GIBSON SYSTEM  
 PANALUX CONNECTION 1.5" Module



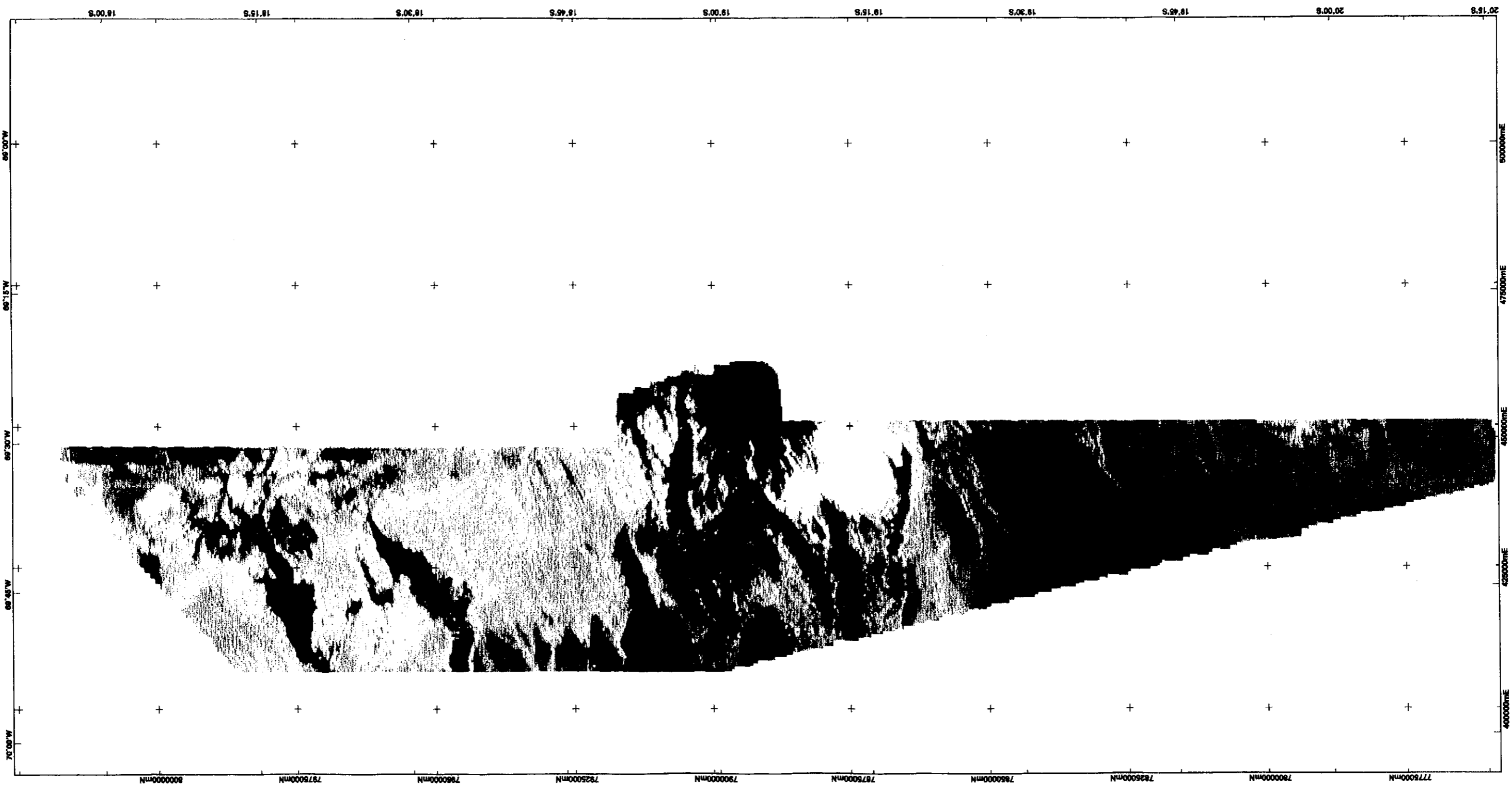
counts per second



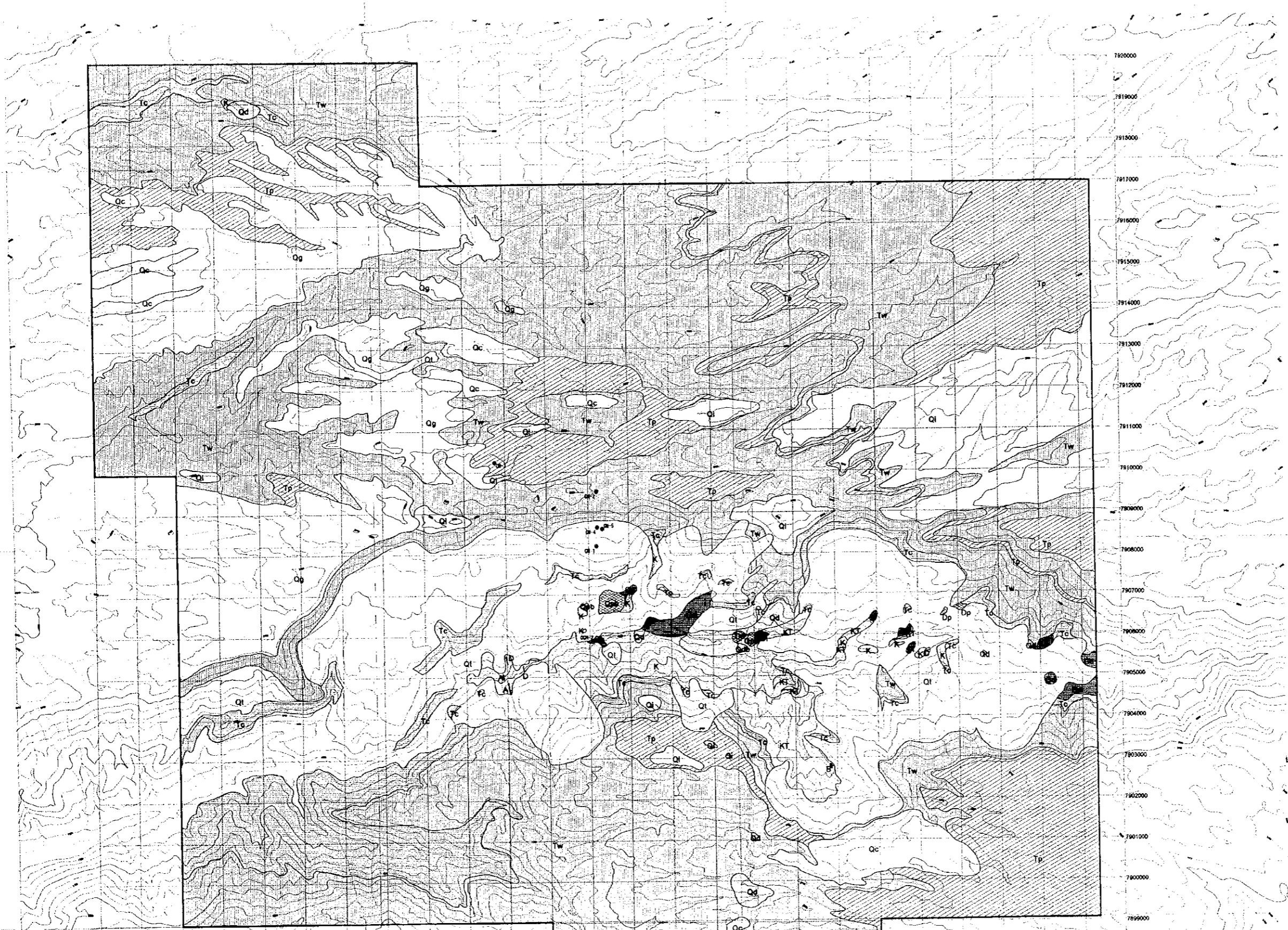
Magnetic North: 35° 15' 00"  
 Grid North: 22° 24' 30"  
 True North: 0° 0' 00"  
 Total Error: 22° 50' 30"  
 Grid Magnetic Angle: -2° 11' 30"  
 True Magnetic Angle: -1° 02' 30"  
 Secular Variation: -0' 22' 30" Per year



NIKKO EXPLORATION & DEVELOPMENT CO. LTD  
 Prepared and compiled by:  
 PUNO JAPAN PT. LTD.  
 Job Number 142  
 OCTOBER 2008 to FEBRUARY 2001



AP-20 Image of Radiometric Intensity

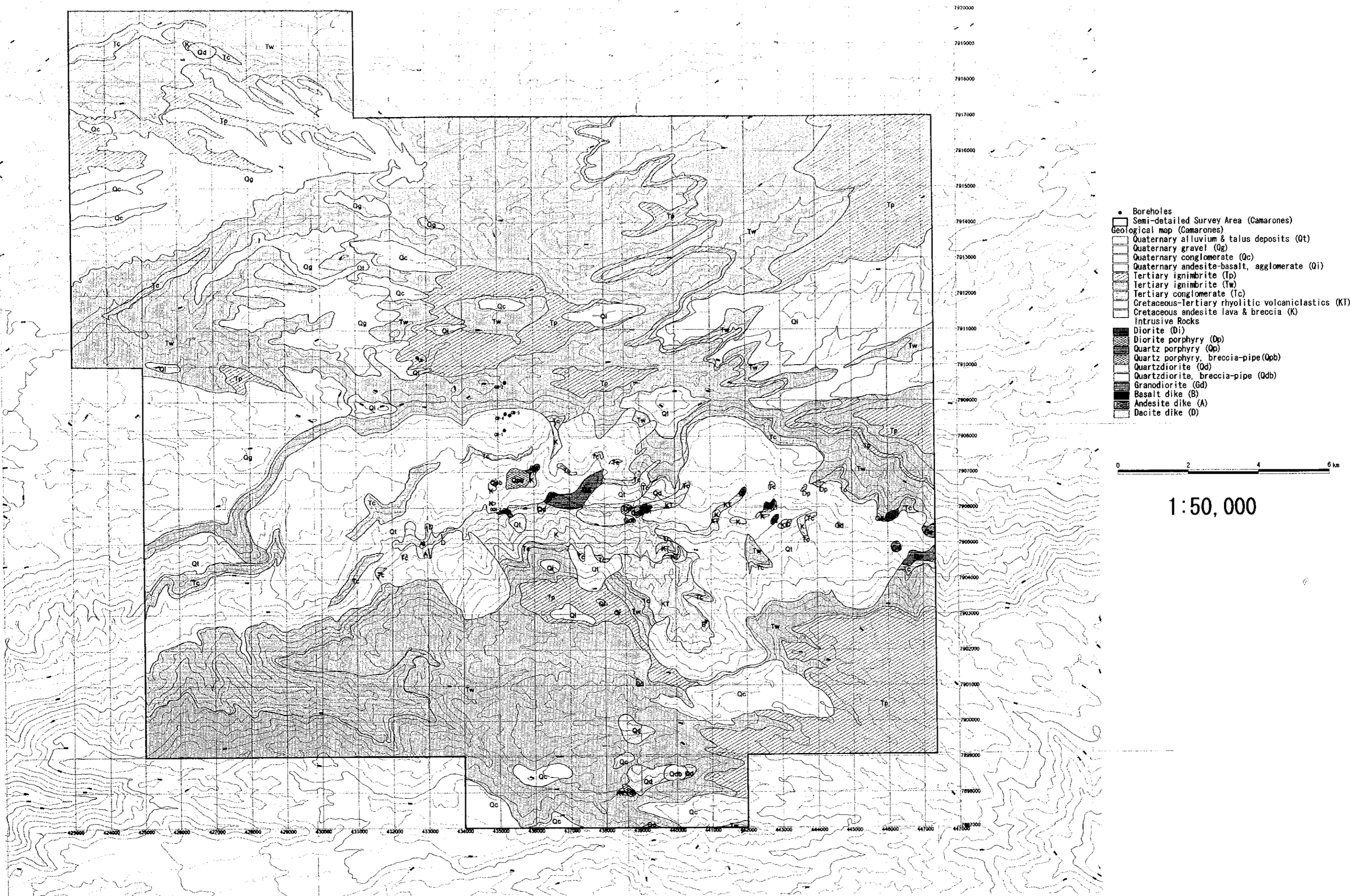


- Boreholes
- ▭ Semi-detailed Survey Area (Camarones)
- ▭ Geological map (Camarones)
- ▭ Quaternary alluvium & talus deposits (Qt)
- ▭ Quaternary gravel (Qg)
- ▭ Quaternary conglomerate (Qc)
- ▭ Quaternary andesite-basalt, agglomerate (Qi)
- ▭ Tertiary ignimbrite (Tp)
- ▭ Tertiary ignimbrite (Tw)
- ▭ Tertiary conglomerate (To)
- ▭ Cretaceous-Tertiary rhyolitic volcanoclastics (KT)
- ▭ Cretaceous andesite lava & breccia (K)
- Intrusive Rocks**
- ▭ Diorite (Di)
- ▭ Diorite porphyry (Dp)
- ▭ Quartz porphyry (Qp)
- ▭ Quartz porphyry, breccia-pipe (Qpb)
- ▭ Quartzdiorite (Qd)
- ▭ Quartzdiorite, breccia-pipe (Qdb)
- ▭ Granodiorite (Gd)
- ▭ Basalt dike (B)
- ▭ Andesite dike (A)
- ▭ Dacite dike (D)

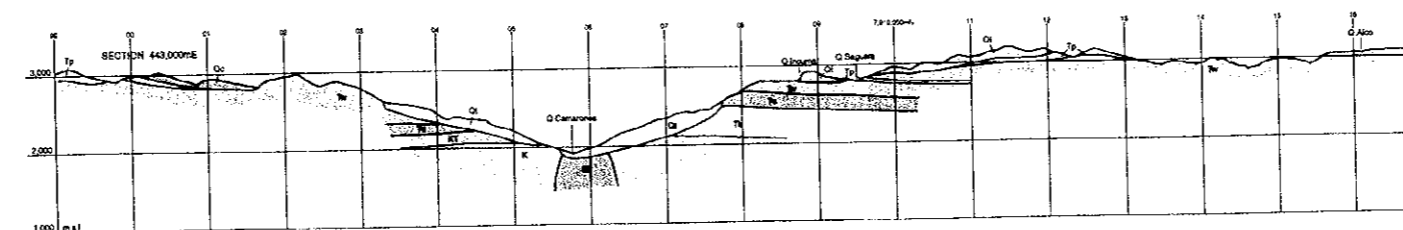
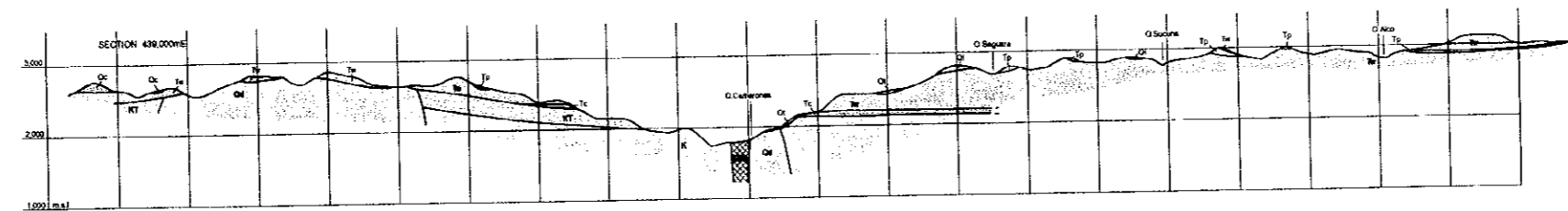
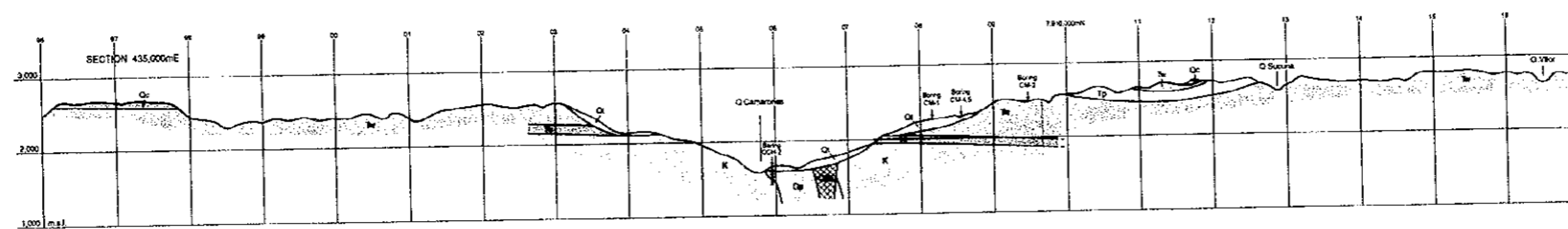
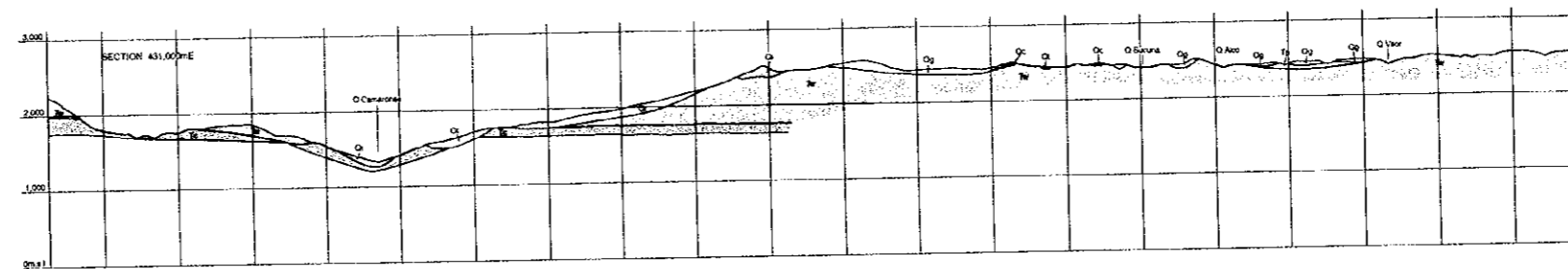
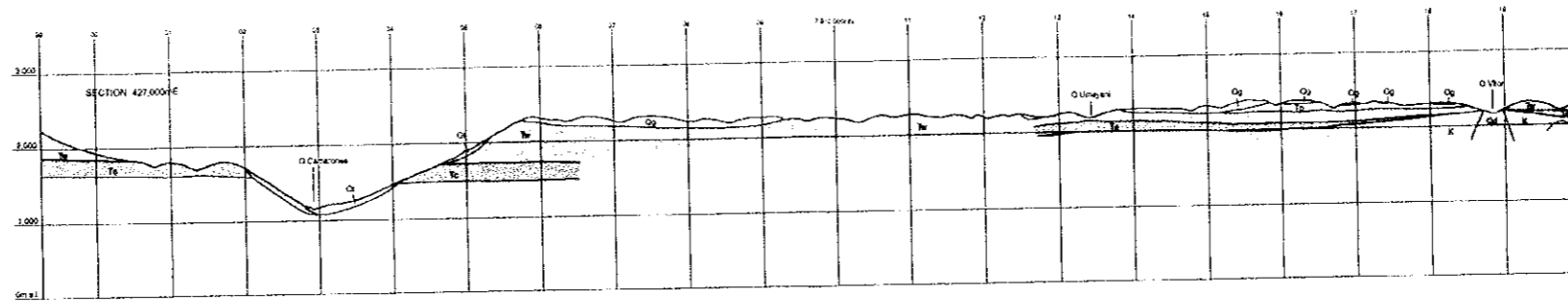


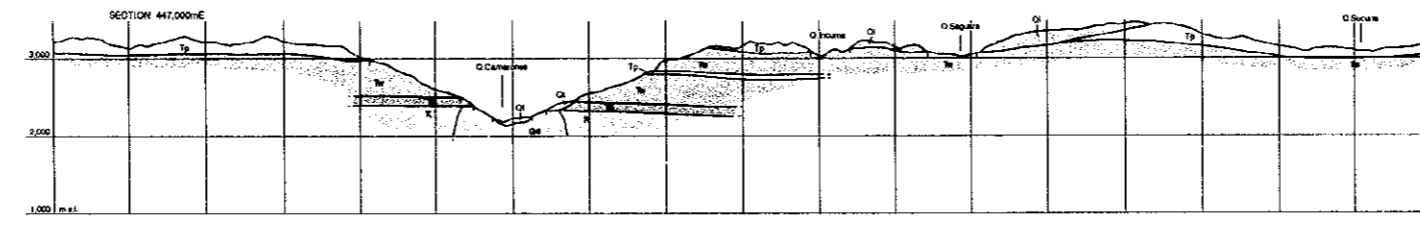
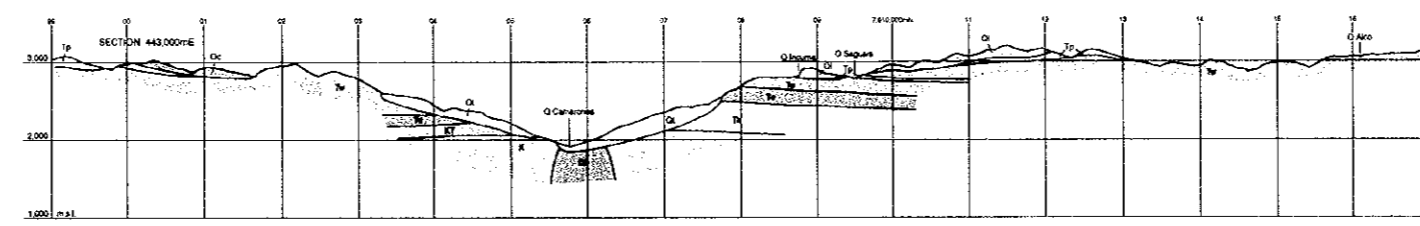
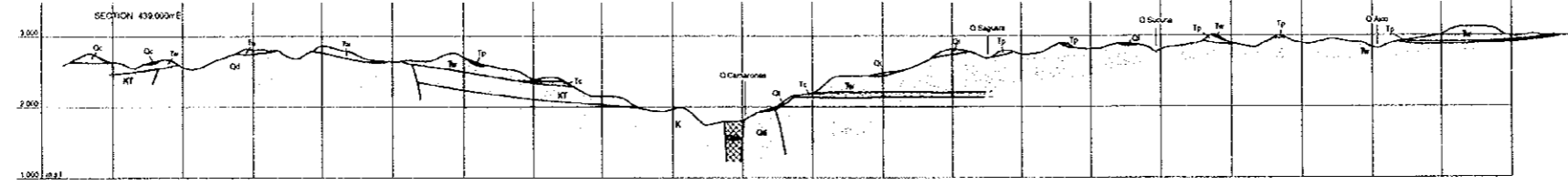
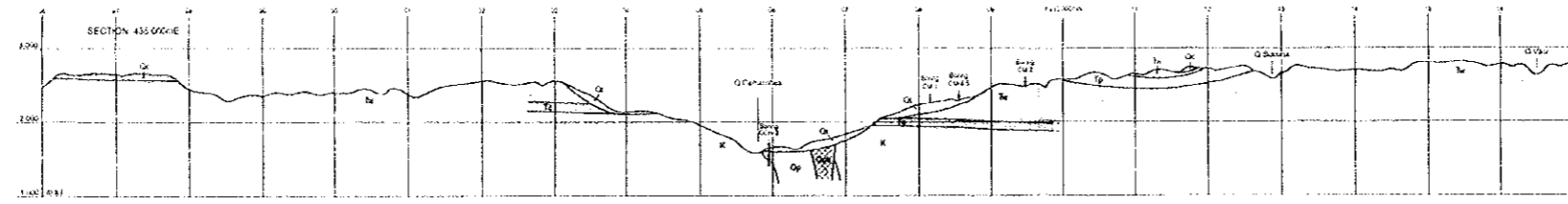
1:50,000

780000  
781000  
781500  
781700  
781800  
781900  
782000  
782100  
782200  
782300  
782400  
782500  
782600  
782700  
782800  
782900  
783000  
783100  
783200  
783300  
783400  
783500  
783600  
783700  
783800  
783900  
784000  
784100  
784200  
784300  
784400  
784500  
784600  
784700  
784800  
784900  
785000  
785100  
785200  
785300  
785400  
785500  
785600  
785700  
785800  
785900  
786000  
786100  
786200  
786300  
786400  
786500  
786600  
786700  
786800  
786900  
787000  
787100  
787200  
787300  
787400  
787500  
787600  
787700  
787800  
787900  
788000  
788100  
788200  
788300  
788400  
788500  
788600  
788700  
788800  
788900  
789000  
789100  
789200  
789300  
789400  
789500  
789600  
789700  
789800  
789900



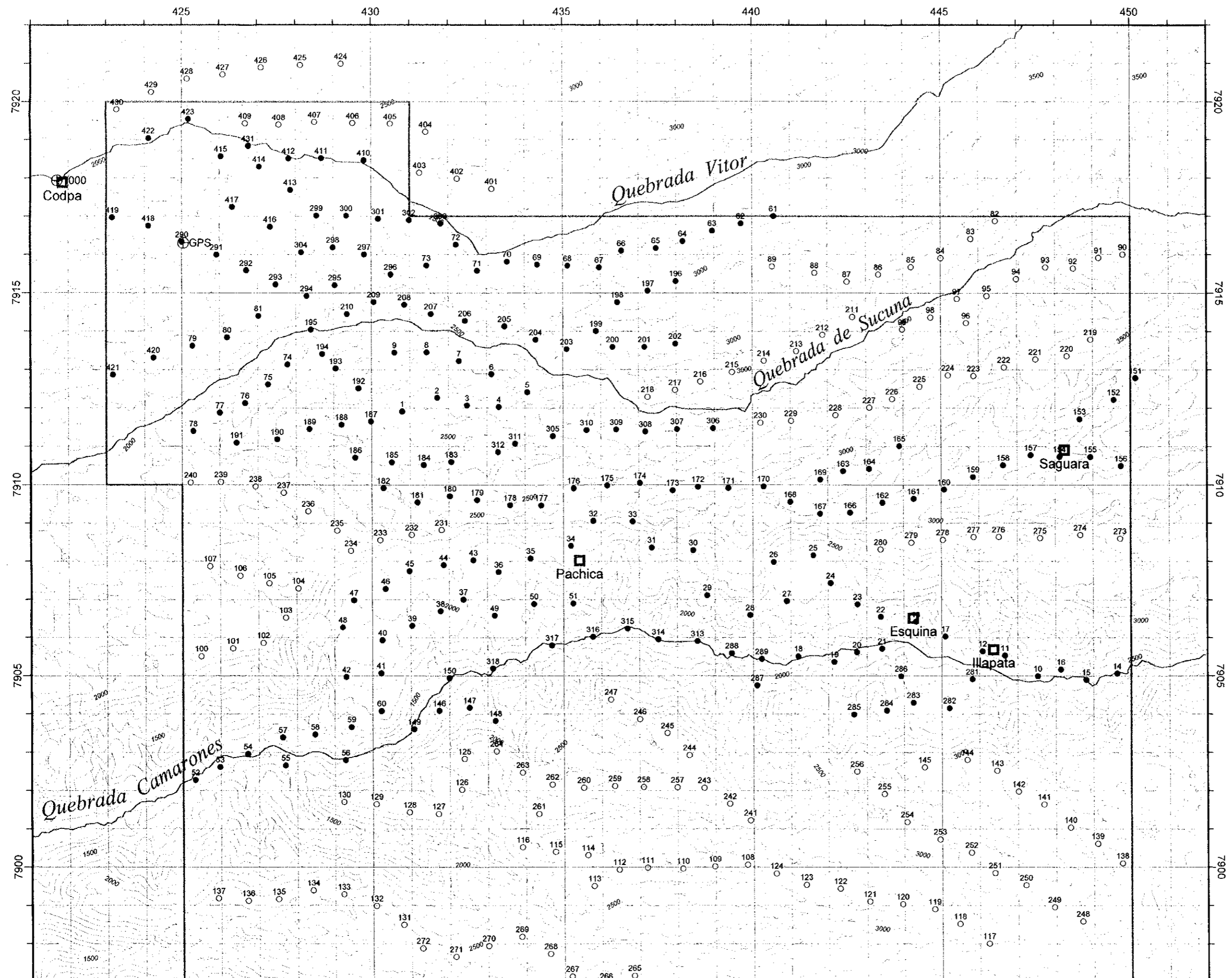
PL. 1 Geological Map of the Camarones Area





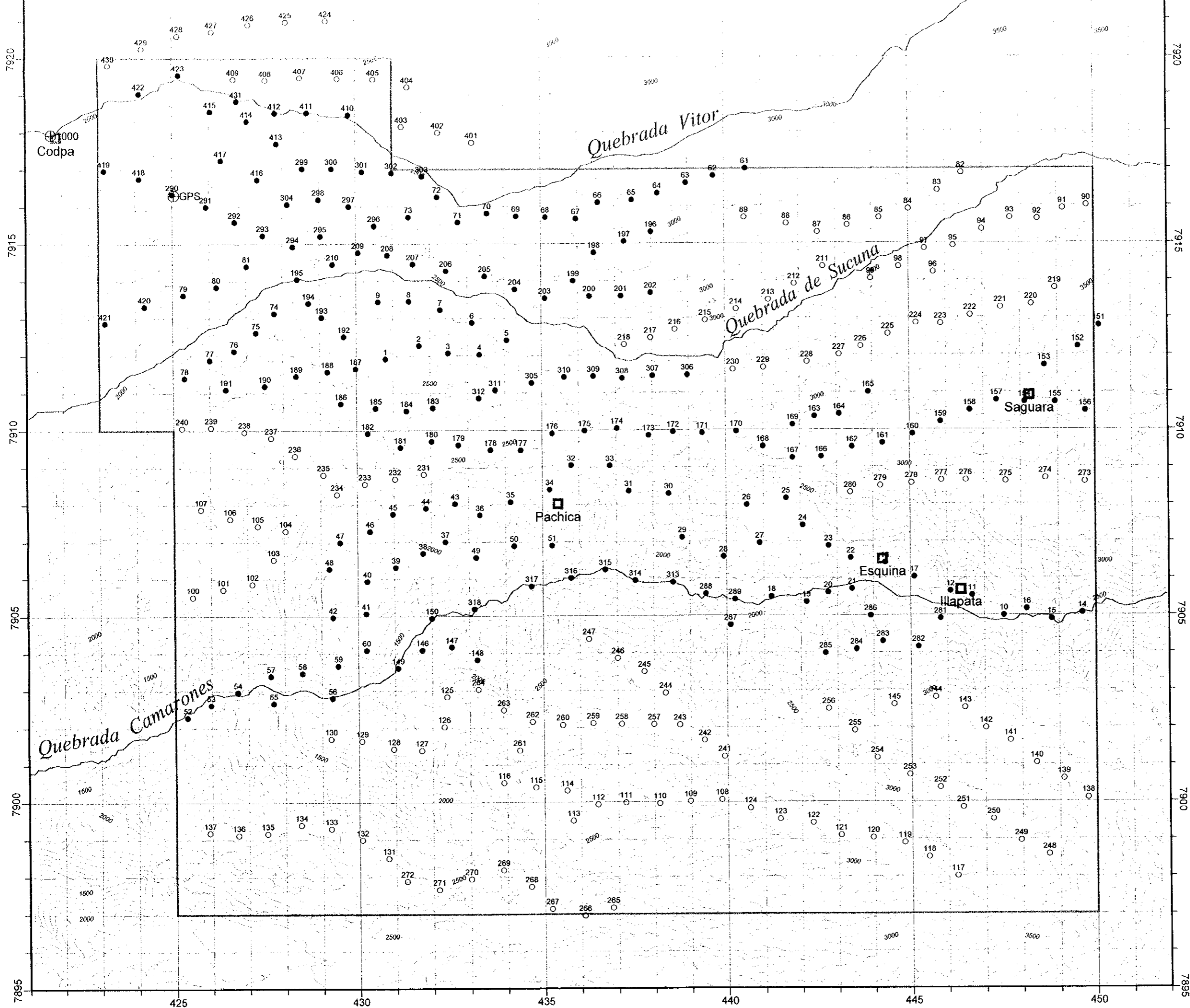
PL.2 Geological Profiles of the Camarones Area (1:50,000)





**LEGEND**

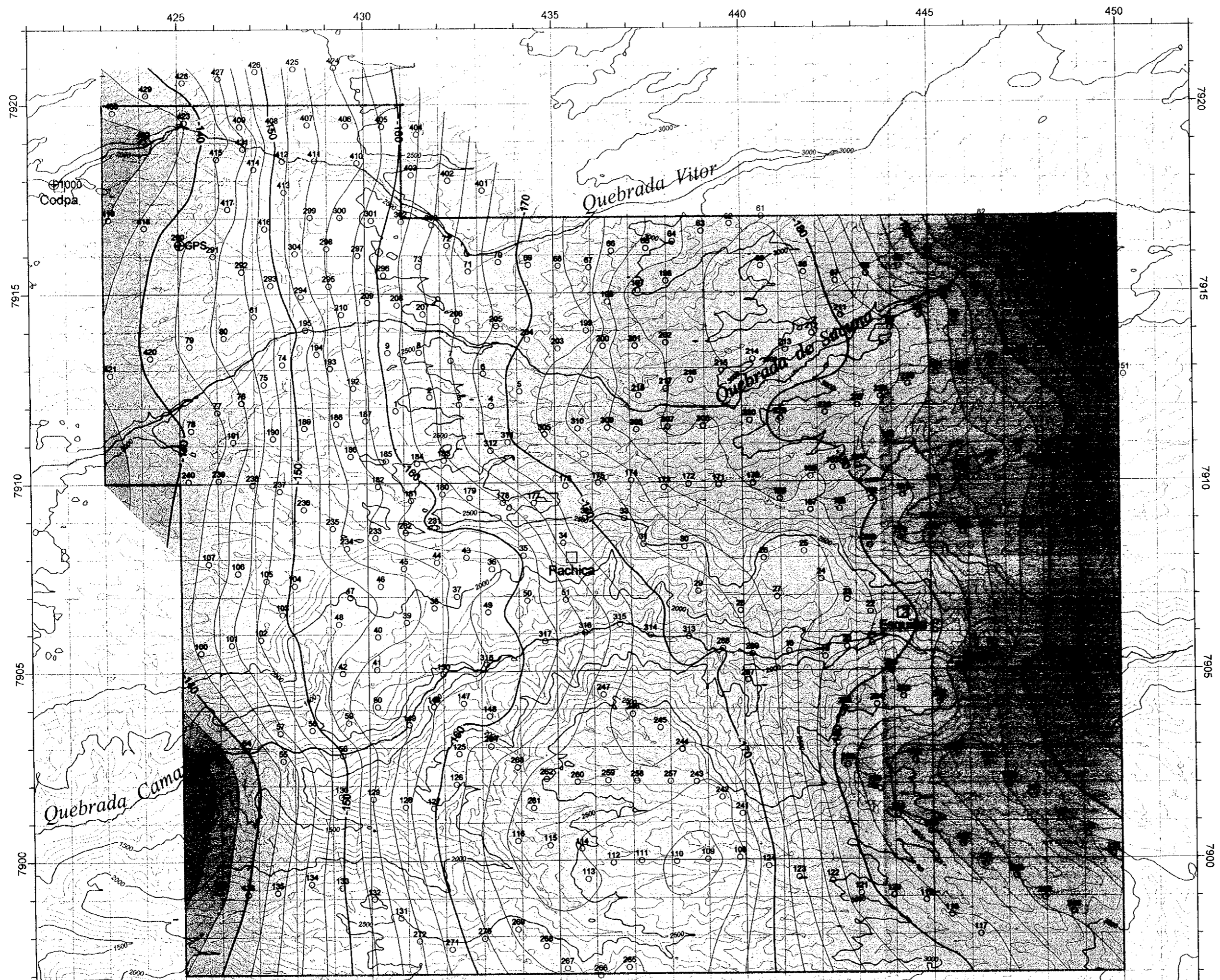
- By Helicopter
- By Car



**LEGEND**

- By Helicopter
- By Car

**Plate 3**  
Location of Gravity Station



**LEGEND**  
 123  
 ○ Gravity station and number

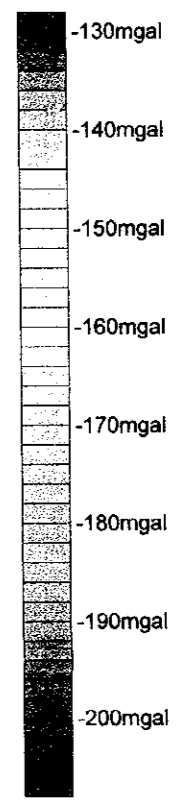
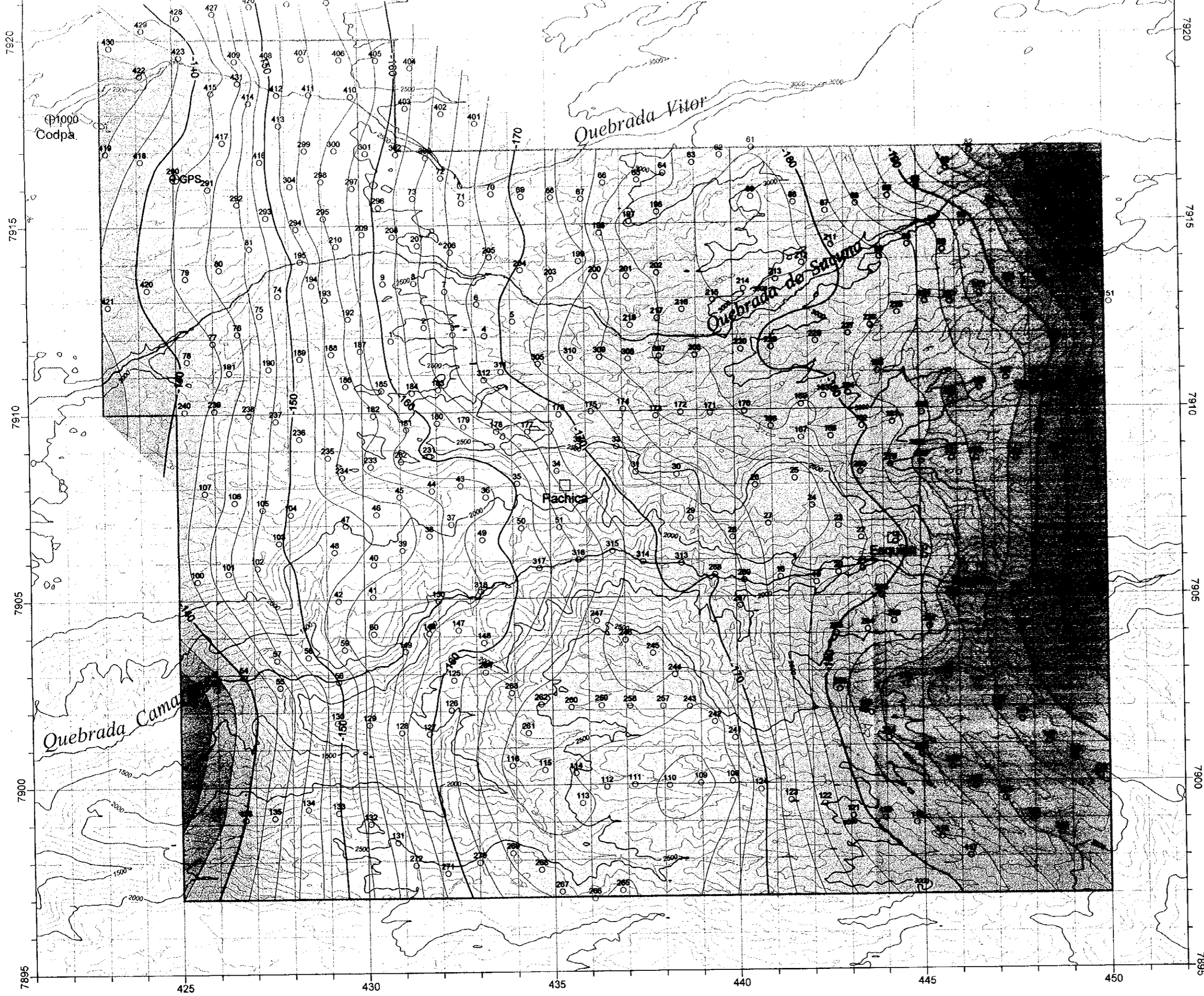


Plate 4  
 Bouguer Anomaly Map  
 (F.A.G= -0.3000 mgal/m)





LEGEND

123  
 ○ Gravity station and number

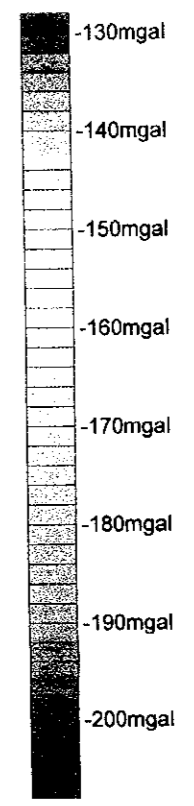
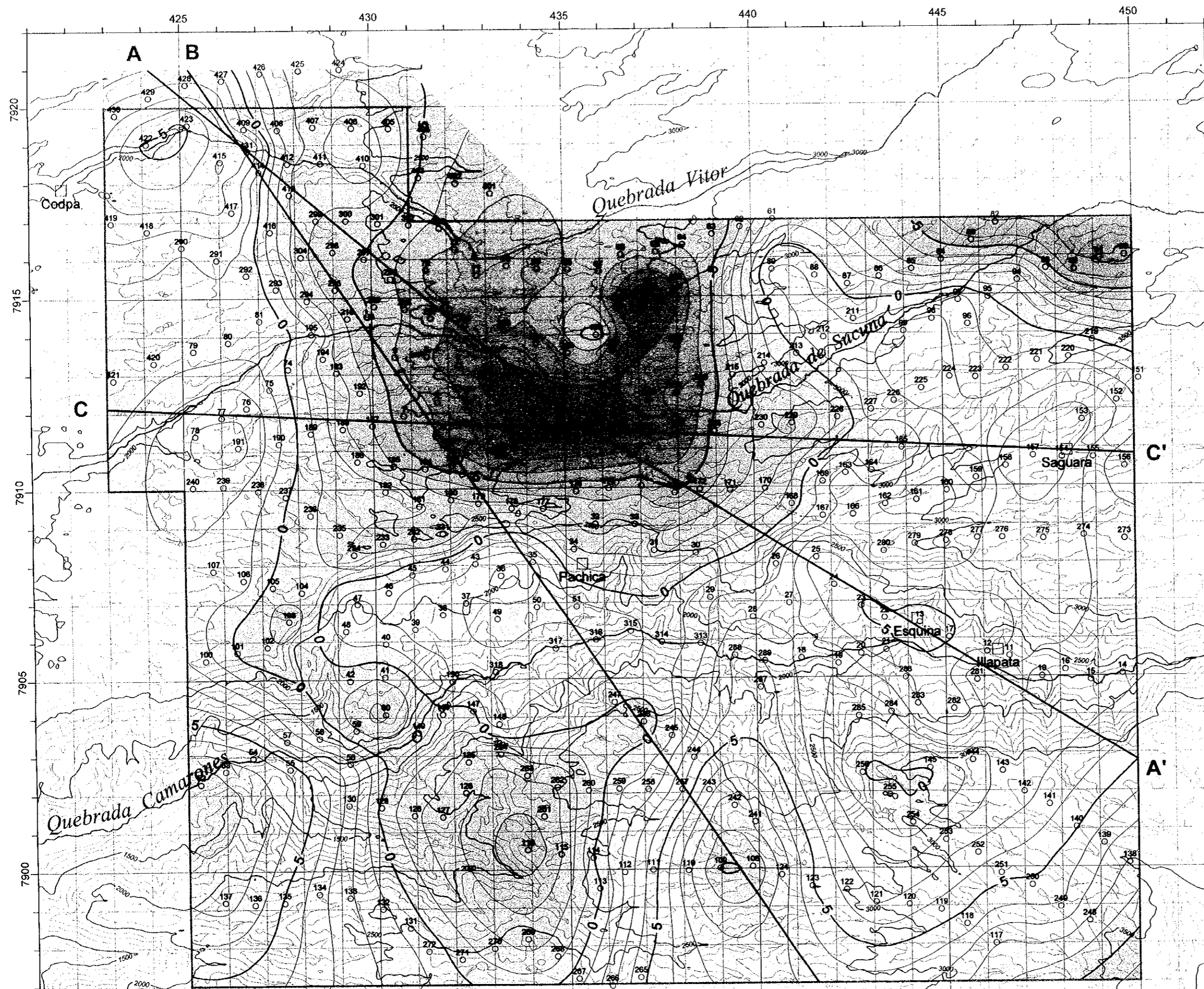


Plate 4  
 Bouguer Anomaly Map  
 (F.A.G= -0.3000 mgal/m)  
 $\rho = 2.25 \text{ g/cm}^3$



**LEGEND**  
 123  
 ○ Gravity station and number  
 — Section of 2D analysis

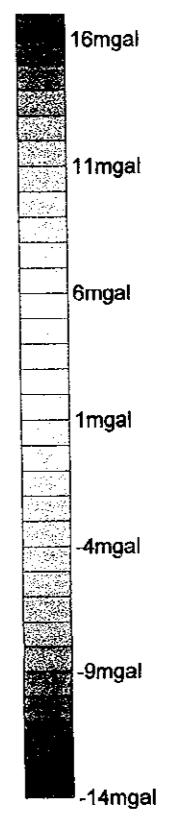


Plate 5  
 Residual Gravity Map  
 (F.A.G= -0.3000 mgal/m)