

AP-10 (2) Observed Features on Survey Routes (Phase 2)

Outcrop No.	Location	Coordinate N. E	Sample No.	Geo Chem	Ore Assay	Dating	X-ray	Thin-Section	Polished Section	Fluid Inclusion	Rock facies							Mineralization					Alteration			Oxidation/Leaching			Note								
											Formation / Intrusive	Unit Name	Rock Name	Color	Size of Phenocryst	Crystallinity	Hardness	Porosity	Others	Type	Size	Structure	Ore minerals	Texture of Qz v.	Qz v. density /m	Gangue minerals	Intensity	Color		Minerals	Color	Minerals	Type of boxwork	Relict			
	Camarones-QCC	7905728	437419	F106							I	Qd	Qz-di	wt	1-2						diss			Py	gry		Cal	h	wt	Qz-a Kf-Chl-s Cal-m							
	Camarones-QCC	7905728	437419	F107							I	Qd	Qz-di	rd gry	2-3						diss			Py-m Goe-Ba-s	gry		Qz-a Kf-a	vh	wt	Epi-Ser-s							
	Camarones-QCC	7905715	437931	F108							I	Qd	Qz-di								diss			Py	gry	Cal Gyp	m	wt	Qz-a Ser-Sme-c-s	rd	Jaro-s Lim	fog					
	Camarones-QCC	7905715	437961	F109							I	Qd	Qz-di	wt	2-3						diss			Py	gry	Qz	h	wt	Sil								
	Camarones-QCC	7905651	438781	F110							I	Qdb (Bre-pipe)	Qz-di	gry	2-3						diss			Py	gry	Qz	h	grn	Sil						float		
	Camarones-QCC	7905511	439064	F111							K	K	Prop	dk gry							diss			Py, Cu-oxi													
	Camarones-QCC	7905511	439064	F112							K	K	Prop	gry							diss	wd. 1.0m	N-S 70W	Py													
	Camarones-QCC	7905511	439064	F113							K	K	Prop	grn							stwk	wd. 0.5cm		Py		Gyp											
	Camarones-QCC	7905240	439389	F185							K	K	Prop	dk grn							diss			Py													
	Camarones-QCC	7905377	439241	F186							K	K	Prop	dk grn							diss			Py													
	Camarones-QCC	7905184	438337	F187							K	K	Prop	dk grn							diss			Py													
	Camarones-QCC	7905622	439017	F190							K	K	Prop	dk grn							diss			Py													
	Camarones-QCC	7905806	438738	F191							K	K	Prop	grn							vein	wd. 50cm	N40E	Py		Qz	h	gry	Qz, Ser	rd	Lim			Py			
	Camarones-QCC	7905831	438662	F192							I	Dp	Di-po	wt	1-2						diss			Py				h	yel	Qz, Ser							
	Camarones-QCC	7905831	438662	F193							I	Dp	Di-po	wt	1-2						diss			Py				h	yel	Qz, Ser							
	Camarones-QCC	7905831	438662	F194							I	Dp	Di-po	wt	1-2						diss			Py													
	Camarones-QCC	7905878	438645	F195							I	Dp	Di-po	wt	2-3						diss			Py-s													
	Camarones-QCC	7905941	438582	F196							I	Dp	Di-po	grn	2-3						diss			Py-s													
	Camarones-QCC	7905941	438582	F197							I	Dp	Di-po	grn	2-3						diss			Py-s													
	Camarones-QCC	7905897	438376	F198							I	Qd	Qz-di	grn	1-2						diss			Py-s													
	Camarones-QCC	7905897	438376	F199							I	Qd	Qz-di	grn	1-2						diss			Py-s				h	yel	Ser-s							
	Camarones-QCC	7905897	438376	F200							I	Qd	Qz-di	grn	1-2						diss			Py-s				s	yel	Qz-Ser-s							
	Camarones-QCC	7905885	438330	F201							I	Qd	Qz-di	grn	1-2						diss			Py-s				s	yel	Qz-Ser-s							
	Camarones-QCC	7905885	438330	F202							I	Qd	Qz-di	grn	1-2						diss			Py-s				s	yel	Qz-Ser-s							
	Camarones-QCC	7905885	438330	F203							I	Qd	Qz-di	grn	1-2						diss			Py-s		Qz, Tou	m	yel	Ka								
	Camarones-QCC	7905872	438143	F204							I	Qd	Qz-di	grn	1-2						diss			Py-s		Qz	h	yel	Qz, Ser								
	Camarones-QCC	7905872	438143	F205							I	Qd	Qz-di	grn	1-2						vein		fine Qz	Py		Qz	h	yel	Qz, Ser								
	Camarones-QCCE	7905489	439580	F114							K	K	And (prop)	dk grn													m	dk grn	Epi-Amp Ser-m Chl-s								
	Camarones-QCCE	7905164	438337	F188							K	K	Prop	dk grn																							
	Camarones-QCCE	7905287	439480	F189							K	K	Prop	dk grn																							
	Camarones-QCE	7905400	440325	F115							K	K	Tf-bre	gry							stwk	wd. 1-2m		Py		Tou, Qz											
	Camarones-QCE	7905231	440678	F116							K	K	Tf-bre	wt							diss			Py		Qz	vh	wt	Qz-a Ser-m								
	Camarones-QCE	7905231	440678	F117							K	K	Tf-bre	wt							diss			Py			h	wt	Ser, Sil	yel	Lim						
	Camarones-QCE	7905678	441581	F118							K	K	Tf-bre	wt							diss			Py			h	wt	Ser, Sil	rd-yel	Lim	fog?					
	Camarones-QCE	7905633	441855	F119							K	K	Tf-bre	wt							diss			Py			h	wt	Ser, Sil	rd-yel	Lim	fog?					
	Camarones-QCE	7906402	441960	H001							I	Di	Di	dk gry	2									Cu-oxi													
	Camarones-QCE	7906402	441960	H002							I	Di	Di	dk gry	2		ophitic							Cu-oxi													
	Camarones-QCE	7906292	441851	H003							I	Di	Di	dk gry	1																						
	Camarones-QCE	7906148	441553	H004							K-T	KT	Vol-cl	gry										Py		s	Lim										
	Camarones-QCE	7906148	441553	H005							K-T	KT	Vol-cl	gry										Py													
	Camarones-QCE	7906148	441553	H006							K-T	KT	Vol-cl	gry										Py-m		Silica-a Kf-m											
	Camarones-QCE	7905925	441292	H007							K	K	Vol-cl								diss			Py													
	Camarones-QCE	7905925	441292	H008							K	K	And																								
	Camarones-QCE	7905925	441292	H009							K	K	And																								
	Camarones-QCE	7905899	441276	H010							K	K	And																								
LE-40	Camarones-QCFE	7905565	442834	E068							I	Di	Di	grn	2mm±		hol-trachytic											m	grn	Epi-Chl-m Sme-c-m							
LE-40	Camarones-QCFE	7905585	442834	E069							I	Di	Di	bk	2mm±		hol-trachytic											m	bk	Epi-s							
LE-41	Camarones-QCFE	7905860	442731	E070							K-T	KT	Tf br	pl grn	3-5mm (Qz-a)													h-m	pl grn/wt	Qz-a							
LE-42	Camarones-QCFE	7905515	443238	E071							K-T	KT	Dac	pink-gry	2mm (Qz-m)		po											s	pink-gry	Sme-c-s							
LE-43	Camarones-QCFE	7905464	444668	E072							I	Qd	Qz-di	grn	1-2mm		hol-ophitic											m	grn	Epi-Chl- Amp-Ser-m							
LE-44	Camarones-QCFE	7905383																																			

AP-10 (2) Observed Features on Survey Routes (Phase 2)

Outcrop No.	Location	Coordinate N, E	Sample No.	Geo Chem	Ore Assay	Dating	X-ray	Thin Section	Polished Section	Fluid Inclusion	Formation / Intrusive	Unit Name	Rock Name	Rock facies				Others	Mineralization					Alteration			Oxidation/Leaching			Note					
														Color	Size of Phenocryst	Crystallinity	Hardness		Porosity	Type	Size	Structure	Ore minerals	Texture of Qz v.	Qz v. density /m	Gangue minerals	Intensity	Color	Minerals		Color	Minerals	Type of boxwork	Relict	
LE-121	Camarones-QCS	7902686	440870	E232									Qz vein					vein	wd. 10cm	N85E v in tf bre	Py-m	gry. cloudy		Qz											
LE-121	Camarones-QCS	7902686	440870	E233									Qz vein					vein	wd. 10cm	N85E v in tf bre	Py-m	gry. cloudy		Qz-Ser-a											
LE-122	Camarones-QCS	7902599	440819	E234									Qz vein					vein	wd. 50cm	N75E v in tf bre		pink-gry. cloudy		Qz											
LE-123	Camarones-QCS	7902414	441078	E235									Qz vein					f. vltz	50m+	network in tf bre	Py-m	gry. cloudy	0.5	Qz											
LE-123	Camarones-QCS	7902414	441078	E236									Qz vein					f. vltz	50m+	network in tf bre	Py-m	gry. cloudy	0.5	Qz											
LE-123	Camarones-QCS	7902414	441078	E237									Qz vein																						
LE-124	Camarones-QCS	7905039	439585	E238									Qz vein																						
	Camarones-QCS	7902155	440173	F130									Qz vein																						
	Camarones-QCS	7902112	440180	F131									Qz vein																						
	Camarones-QCS	7902112	440180	F132									Qz vein																						
	Camarones-QCS	7902128	440194	F133									Qz vein																						
	Camarones-QCS	7902128	440194	F134									Qz vein																						
	Camarones-QCS	7902141	440202	F135									Qz vein																						
	Camarones-QCS	7902141	440202	F136									Qz vein																						
	Camarones-QCS	7902153	440201	F137									Qz vein																						
	Camarones-QCS	7902170	440063	F138									Qz vein																						
	Camarones-QCS	7902290	440070	F139									Qz vein																						
	Camarones-QCS	7902526	435368	F140									Qz vein																						
	Camarones-QCS	7902204	440540	G123									Qz vein																						
	Camarones-QCS	7902204	440540	G124									Qz vein																						
	Camarones-QCS	7902204	440540	G125									Qz vein																						
	Camarones-QCS	7902204	440540	G126									Qz vein																						
	Camarones-QCS	7902181	440537	G127									Qz vein																						
	Camarones-QCS	7902181	440537	G128									Qz vein																						
	Camarones-QCS	7902058	440571	G129									Qz vein																						
	Camarones-QCS	7902058	440571	G130									Qz vein																						
	Camarones-QCS	7902109	440591	G131									Qz vein																						
	Camarones-QCS	7902109	440591	G132									Qz vein																						
	Camarones-QCS	7902049	440525	G133									Qz vein																						
	Camarones-QCS	7902049	440525	G134									Qz vein																						
	Camarones-QCS	7902042	440527	G135									Qz vein																						
	Camarones-QCS	7902042	440527	G136									Qz vein																						
	Camarones-QCS	7902071	440479	G137									Qz vein																						
	Camarones-QCS	7902071	440479	G138									Qz vein																						
	Camarones-QCS	7902071	440479	G139									Qz vein																						
	Camarones-QCS	7902071	440479	G140									Qz vein																						
	Camarones-QCS	7899645	440014	G141									Qz vein																						
	Camarones-QCS	7904012	440306	G188									Qz vein																						
	Camarones-QCS	7903955	440355	G189									Qz vein																						
	Camarones-QCS	7903955	440355	G190									Qz vein																						
	Camarones-QCS	7903923	440363	G191									Qz vein																						
	Camarones-QCS	7903867	440341	G192									Qz vein																						
	Camarones-QCS	7903838	440358	G193									Qz vein																						
	Camarones-QCS	7903825	440426	G194									Qz vein																						
	Camarones-QCS	7903825	440426	G195									Qz vein																						
	Camarones-QCS	7904474	440334	G196									Qz vein																						
	Camarones-QCS	7904493	440355	G197									Qz vein																						
	Camarones-QCS	7904493	440355	G198									Qz vein																						
	Camarones-QCS	7904493	440355	G199									Qz vein																						
	Camarones-QCS	7904520	440438	G200									Qz vein																						
	Camarones-QCS	7904581	440501	G201									Qz vein																						
	Camarones-QCS	7904596	440540	G202									Qz vein																						
	Camarones-QCS	7904596	440540	G203									Qz vein																						
	Camarones-QCS	7904145	440194	G204									Qz vein																						

AP-11 List of Gravity Station Data

GRAVITY SURVEY IN CAMARONES, REGION I, CHILE (2000)

Table with columns: No., Y, M D, LATITUDE (D, M, S), LONGITUDE (D, M, S), ELEVATION (m), GV (mgal), GRAVITY (METER), LEVEL, NORMAL GV (mgal), TERRAIN CORRECTIONS (DENSITY=2.00) (60-20km, 20-4km, 4-1km, 1-0.2km, 20-0m, TOTAL), X (km), Y (km), No.



AP-12 List of Bouguer Anomaly Values

***** GRAVITY SURVEY IN CAMARONES, REGION I, CHILE (2000) *****				BOUGUER ANOMALY VALUES (mgal) [FREE AIR GRADIENT = -0.3000 mgal/m]									
UTM COORDINATES(km)		STATION	ELEVATION										
<X>	<Y>	No.	m	<2.00>	<2.10>	<2.20>	<2.25>	<2.30>	<2.35>	<2.40>	<2.50>	<2.60>	<2.67>
430.795	7911.910	1	2469.11	-135.840	-145.850	-155.860	-160.870	-165.880	-170.880	-175.890	-185.900	-195.910	-202.920
431.702	7912.284	2	2566.10	-137.600	-147.610	-158.210	-163.360	-168.510	-173.660	-178.820	-189.120	-199.420	-206.630
432.478	7912.088	3	2605.48	-139.890	-150.320	-160.740	-165.950	-171.160	-176.370	-181.580	-192.000	-202.430	-209.720
433.318	7912.031	4	2607.18	-142.540	-153.010	-163.480	-168.710	-173.950	-179.180	-184.420	-194.860	-205.350	-212.680
434.064	7912.411	5	2635.42	-144.230	-154.830	-165.420	-170.720	-176.020	-181.320	-186.610	-197.210	-207.810	-215.220
433.124	7912.884	6	2612.05	-142.800	-153.310	-163.810	-169.060	-174.310	-179.560	-184.810	-195.320	-205.820	-213.170
432.268	7913.230	7	2593.02	-139.900	-150.320	-160.730	-165.940	-171.150	-176.350	-181.560	-191.980	-202.390	-209.680
431.433	7913.454	8	2547.76	-138.100	-148.330	-158.560	-163.670	-168.780	-173.900	-179.010	-189.240	-199.470	-206.630
430.584	7913.442	9	2473.60	-136.050	-146.010	-155.980	-160.970	-165.950	-170.930	-175.920	-185.880	-195.850	-202.830
447.524	7904.982	10	2285.05	-189.300	-177.750	-186.200	-190.430	-194.660	-198.890	-203.110	-211.560	-220.020	-225.930
446.664	7905.531	11	2224.25	-165.710	-173.850	-182.000	-186.070	-190.140	-194.210	-198.280	-206.430	-214.570	-220.270
446.086	7905.644	12	2206.84	-164.150	-172.300	-180.440	-184.510	-188.580	-192.650	-196.720	-204.870	-213.010	-218.710
444.317	7906.421	13	2170.48	-158.670	-166.810	-174.940	-179.010	-183.080	-187.150	-191.220	-199.350	-207.490	-213.180
449.621	7905.061	14	2361.78	-172.610	-181.200	-189.790	-194.080	-198.370	-202.660	-206.950	-215.540	-224.130	-230.140
448.803	7904.895	15	2299.13	-171.240	-179.580	-187.920	-192.090	-196.260	-200.430	-204.600	-212.930	-221.270	-227.110
448.135	7905.185	16	2288.51	-169.470	-177.780	-186.080	-190.230	-194.380	-198.530	-202.680	-210.990	-219.290	-225.100
445.094	7906.030	17	2247.51	-180.230	-188.710	-197.200	-200.230	-204.360	-208.490	-212.620	-220.750	-228.880	-234.910
441.196	7905.508	18	1845.82	-158.780	-165.400	-172.030	-175.350	-178.670	-181.990	-185.310	-191.940	-198.580	-203.220
442.153	7905.360	19	1915.35	-160.820	-167.780	-174.740	-178.210	-181.690	-185.170	-188.650	-195.610	-202.570	-207.440
442.746	7905.615	20	1935.31	-160.130	-167.120	-174.120	-177.610	-181.110	-184.610	-188.100	-195.100	-202.090	-206.990
443.408	7905.709	21	1987.90	-160.340	-167.570	-174.800	-178.410	-182.030	-185.640	-189.260	-196.490	-203.720	-208.780
443.372	7906.549	22	2220.84	-156.550	-165.010	-173.480	-177.710	-181.950	-186.180	-190.410	-198.880	-207.350	-213.270
442.764	7906.877	23	2289.85	-154.070	-162.920	-171.760	-176.190	-180.610	-185.030	-189.450	-198.300	-207.140	-213.340
442.064	7907.428	24	2303.05	-152.850	-161.810	-170.770	-175.240	-179.720	-184.200	-188.680	-197.640	-206.600	-212.870
441.607	7908.156	25	2349.05	-151.580	-160.630	-169.890	-174.220	-178.760	-183.290	-187.820	-196.890	-205.950	-212.900
440.548	7907.980	26	2443.00	-151.330	-160.830	-170.330	-175.080	-179.830	-184.580	-189.330	-198.820	-208.320	-214.970
440.892	7906.955	27	2298.05	-152.700	-161.640	-170.570	-175.040	-179.510	-183.980	-188.450	-197.380	-206.320	-212.570
439.919	7906.594	28	2298.06	-150.320	-159.110	-167.900	-172.290	-176.690	-181.080	-185.480	-194.270	-203.050	-209.210
438.789	7907.114	29	2319.04	-148.530	-157.430	-166.330	-170.780	-175.220	-179.670	-184.120	-189.020	-193.020	-201.920
438.430	7908.287	30	2446.22	-149.420	-158.860	-168.300	-173.020	-177.730	-182.450	-187.170	-196.610	-206.050	-212.650
437.335	7908.359	31	2482.48	-148.200	-157.790	-167.390	-172.190	-176.990	-181.780	-186.580	-196.180	-205.770	-212.490
435.788	7909.056	32	2515.00	-145.180	-155.030	-164.890	-169.820	-174.750	-179.680	-184.610	-194.470	-204.330	-211.230
436.829	7909.041	33	2487.95	-147.200	-156.870	-166.540	-171.370	-176.210	-181.040	-185.880	-195.550	-205.220	-211.990
435.199	7908.401	34	2294.95	-144.500	-153.520	-162.550	-167.080	-171.570	-176.060	-180.600	-189.620	-198.640	-204.960
434.132	7908.070	35	2085.60	-139.910	-147.940	-155.980	-160.000	-164.020	-168.040	-172.060	-180.090	-188.130	-193.760
433.296	7907.720	36	2033.13	-137.050	-144.990	-152.930	-156.900	-160.870	-164.840	-168.810	-176.750	-184.690	-190.250
432.368	7907.002	37	2038.39	-137.000	-145.010	-153.030	-157.030	-161.040	-165.040	-169.050	-177.060	-185.080	-190.690
431.768	7906.695	38	1974.47	-135.250	-143.040	-150.820	-154.720	-158.610	-162.500	-166.400	-174.180	-181.970	-187.420
431.030	7906.312	39	1899.67	-134.720	-142.160	-149.800	-153.320	-157.040	-160.760	-164.470	-171.910	-179.350	-184.560
430.257	7905.829	40	1905.72	-134.320	-141.850	-149.380	-153.140	-156.910	-160.670	-164.440	-171.960	-179.490	-184.760
430.219	7905.066	41	1880.97	-136.650	-144.030	-151.410	-155.100	-158.800	-162.490	-166.180	-173.560	-180.940	-186.110
429.304	7904.962	42	1888.10	-134.230	-141.610	-149.000	-152.690	-156.380	-160.070	-163.760	-171.150	-178.530	-183.700
432.629	7908.029	43	2115.85	-136.390	-144.690	-152.990	-157.140	-161.290	-165.440	-169.590	-177.900	-186.200	-192.010
431.851	7907.902	44	2149.63	-134.820	-143.290	-151.750	-155.980	-160.210	-164.440	-168.670	-177.140	-185.600	-191.520
430.969	7907.745	45	2123.30	-133.260	-141.610	-149.950	-154.120	-158.290	-162.470	-166.640	-174.980	-183.330	-189.170
430.343	7907.281	46	2056.08	-132.570	-140.730	-148.890	-152.970	-157.050	-161.130	-165.210	-173.370	-181.530	-187.250
429.523	7906.983	47	1979.55	-130.730	-138.520	-146.320	-150.220	-154.120	-158.020	-161.920	-169.720	-177.510	-182.970
429.211	7906.271	48	1938.85	-131.000	-138.660	-146.320	-150.150	-153.980	-157.810	-161.640	-169.300	-176.960	-182.320
433.186	7906.581	49	1839.45	-141.870	-148.990	-156.120	-163.250	-170.380	-177.510	-184.640	-191.770	-198.900	-206.030
434.224	7906.886	50	1809.99	-144.080	-150.980	-157.870	-164.760	-171.650	-178.540	-185.430	-192.320	-199.210	-206.100

***** GRAVITY SURVEY IN CAMARONES, REGION I, CHILE (2000) *****				BOUGUER ANOMALY VALUES (mgal) [FREE AIR GRADIENT = -0.3000 mgal/m]											
UTM COORDINATES(km)		STATION	ELEVATION												
<X>	<Y>	No.	m	<2.00>	<2.10>	<2.20>	<2.25>	<2.30>	<2.35>	<2.40>	<2.50>	<2.60>	<2.67>		
435.255	7906.901	51	1785.15	-147.240	-153.900	-160.560	-163.880	-167.210	-170.540	-173.870	-180.520	-187.180	-191.840		
425.325	7902.274	52	1139.32	-124.860	-128.680	-132.510	-134.420	-136.340	-138.250	-140.160	-143.990	-147.820	-150.490		
425.973	7902.810	53	1175.83	-127.170	-131.200	-135.220	-137.240	-139.250	-141.270	-143.280	-147.310	-151.330	-154.150		
426.696	7902.952	54	1196.64	-129.620	-133.710	-137.810	-139.860	-141.910	-143.950	-146.000	-150.100	-154.200	-157.060		
427.688	7902.657	55	1244.31	-131.800	-136.080	-140.370	-142.510	-144.650	-146.790	-148.940	-153.220	-157.510	-160.510		
429.280	7902.792	56	1271.34	-138.950	-143.170	-147.390	-149.490	-151.600	-153.710	-155.820	-160.040	-164.260	-167.220		
427.816	7903.388	57	1397.74	-132.770	-137.900	-143.030	-145.600	-148.180	-150.730	-153.290	-158.420	-163.560	-167.150		
428.471	7903.461	58	1471.08	-135.560	-141.040	-146.530	-149.270	-152.010	-154.750	-157.500	-162.980	-168.460	-172.300		
429.445	7903.660	59	1633.11	-138.090	-144.280	-150.480	-153.420	-156.370	-159.320	-162.270	-169.060	-175.260	-179.590		
430.225	7904.079	60	1766.95	-139.810	-146.820	-153.820	-156.820	-160.220	-163.630	-167.030	-173.830	-180.630	-185.400		
440.569	7917.006	61	3248.63	-146.060	-158.940	-171.830	-178.270	-184.710	-191.160	-197.600	-210.480	-223.370	-232.390		
439.706	7916.809	62	3174.13	-147.360	-160.040	-172.730	-179.070	-185.410	-191.760	-198.100	-210.780	-223.470	-232.350		
438.957	7916.622	63	3122.51	-148.290	-160.780	-173.280	-179.530	-185.770	-192.020	-198.270	-210.760	-223.260	-232.000		
438.178	7916.350	64	2998.72	-146.990	-159.030	-171.060	-177.080	-183.100	-189.120	-195.140	-207.170	-219.210	-227.630		
437.470	7916.169	65	2954.32	-146.750	-158.590	-170.440	-176.370	-182.290	-188.210	-194.140	-205.990	-217.840	-226.130		
436.555	7916.102	66	2891.54	-145.550	-157.160	-168.790	-174.580	-180.390	-186.200	-192.010	-203.620	-215.230	-223.360		
435.960	7915.870	67	2831.33	-144.730	-156.100	-167.470	-173.160	-178.850	-184.530	-190.220	-201.590	-212.960	-220.920		
435.130	7915.711	68	2776.89	-143.810	-154.970	-166.140	-171.720	-177.310	-182.890	-188.480	-199.640	-210.810	-218.630		
434.334	7915.743	69	2721.40	-143.160	-154.110	-165.050	-170.530	-176.000	-181.470	-186.950	-197.890	-208.840	-216.500		
433.540	7915.821	70	2666.42	-142.370	-153.080	-163.790	-169.150	-174.500	-179.860	-185.210	-195.920	-206.640	-214.130		
432.756	7915.582	71	2613.07	-140.630	-151.160	-161.690	-166.950	-172.220	-177.480	-182.750	-193.280	-203.800	-211.170		
432.203	7916.260	72	2596.55	-139.490	-149.940	-160.380	-165.610	-170.830	-176.050	-181.280	-191.720	-202.170	-209.480		
431.433	7915.719	73	2565.61	-138.150	-148.490	-158.620	-163.990	-169.150	-174.320	-179.490	-189.820	-200.150	-207.390		
427.776	7913.134	74	2381.99	-124.960	-134.530	-144.100	-148.890	-153.670	-158.460	-163.250	-172.820	-182.390	-189.090		
427.271	7912.613	75	2345.82	-123.040	-132.460	-141.870	-146.580	-151.290	-155.990	-160.700	-170.110	-179.520	-186.110		
426.653	7912.126	76	2263.67	-120.820	-129.930	-139.050	-143.600	-148.160	-152.710	-157.270	-166.380	-175.490	-181.860		
426.002	7911.878	77	2196.42	-118.900	-128.730	-137.570	-141.990	-146.400	-150.820	-155.240	-164.080	-172.910	-179.100		
425.303	7911.398	78	2156.78	-118.560	-127.210	-135.860	-140.180	-144.510	-148.830	-153.160	-161.810	-170.460	-176.510		
425.280	7913.617	79	2359.18	-119.100	-128.580	-138.060	-142.800	-147.540	-152.280	-157.020	-166.500	-175.980	-182.610		
426.190	7913.841	80	2396.17	-120.750	-130.370	-139.980	-144.790	-149.600	-154.410	-159.220	-168.840	-178.460	-185.190		
427.018	7914.404	81	2441.56	-121.620	-131.440	-141.250	-146.160	-151.070	-155.970	-160.880	-170.700	-180.510	-187.380		
446.444	7916.877	82	3351.89	-163.270	-176.630	-189.980	-196.680	-203.340	-210.010	-216.690	-230.050	-243.400	-252.750		
445.800	7916.413	83	3334.16	-161.020	-174.280	-187.540	-194.180	-200.810	-207.440	-214.070	-227.340	-240.600	-249.880		
445.003	7915.913	84	3304.97	-157.610	-170.730	-183.850	-190.410	-196.970	-203.530	-210.090	-223.210	-236.330	-245.520		
444.215	7915.675	85	3242.22	-155.290	-168.220	-181.150	-187.610	-194.080	-200.540	-207.010	-219.930	-232.860	-241.910		
443.336	7915.482	86	3200.34	-151.930	-164.700	-177.480	-183.860	-190.250	-196.640	-203.020	-215.800	-228.570	-237.520		
442.514	7915.295	87	3208.23	-149.600	-162.400	-175.190	-181.590	-187.980	-194.380	-200.770	-213.570	-226.360	-235.310		
441.664	7915.528	88	3171.37	-148.650	-159.330	-172.010	-178.350	-184.690	-191.030	-197.360	-210.040	-222.720	-231.600		
440.534	7915.690	89	3081.45	-144.230	-156.580	-168.900	-175.060	-181.230	-187.400	-193.560	-205.900	-218.230	-226.870		
449.804	7916.005	90	3567.98	-189.710	-193.810	-197.900	-204.950	-212.000	-219.050	-226.100	-240.190	-254.290	-264.150		
449.163	7915.920	91	3545.75	-187.610	-181.620	-195.640	-202.640	-209.650	-216.660	-223.670	-237.680	-251.700	-261.510		
448.491	7915.641	92	3435.74	-186.510	-180.120	-193.730	-200.540	-207.340	-214.150	-220.950	-234.560	-248.170	-257.700		
447.755	7915.672	93	3237.24	-184.670	-177.640	-190.620	-197.110	-203.600	-210.090	-216.580	-229.560	-242.540	-251.630		
446.994	7915.367	94	3113.19	-180.730	-173.210	-185.700	-191.940	-198.180	-204.430	-210.670	-223.150	-235.640	-244.380		
446.219	7914.928	95	3082.86	-158.000	-170.400	-182.610	-189.010	-195.220	-201.420	-207.630	-220.030	-232.440	-241.130		
445.672	7914.222	96	3084.85	-155.850	-168.230	-180.600	-186.780	-192.970	-199.160	-205.340	-217.720	-230.090	-238.750		
445.430	7914.852	97	3036.51	-155.070	-167.240	-179.410	-185.500	-191.590	-197.670	-203.760	-215.930	-228.110	-236.630		
444.732	7914.370	98	3038.31	-153.040	-165.240	-177.430	-183.530	-189.630	-195.730	-201.830	-214.030	-226.230	-234.770		
443.981	7914.051	99	3045.66	-151.050	-163.260	-175.480	-181.570	-187.670	-193.770	-199.870	-212.080	-224.290	-232.830		
425.491	7905.510	100	2348.37	-119.960	-128.930	-137.890	-142.370	-146.860	-151.340	-155.820	-164.790	-173.750	-180.030		

***** GRAVITY SURVEY IN CAMARONES, REGION I, CHILE (2000) *****				BOUGUER ANOMALY VALUES (mgal) [FREE AIR GRADIENT = -0.3000 mgal/m]										
UTM COORDINATES(m)		STATION	ELEVATION											
<X>	<Y>	No.	m	<2.00>	<2.10>	<2.20>	<2.25>	<2.30>	<2.35>	<2.40>	<2.50>	<2.60>	<2.67>	
426.321	7905.715	101	2352.17	-123.140	-132.200	-141.260	-145.790	-150.320	-154.850	-159.370	-168.430	-177.490	-183.830	
427.122	7905.856	102	2393.56	-125.410	-134.530	-143.660	-148.230	-152.790	-157.350	-161.920	-171.050	-180.170	-186.560	
427.705	7906.527	103	2356.27	-127.260	-136.410	-145.550	-150.130	-154.700	-159.270	-163.850	-172.990	-182.140	-188.540	
428.043	7907.298	104	2444.60	-128.510	-136.040	-145.570	-150.340	-155.110	-159.870	-164.640	-174.170	-183.710	-190.380	
427.286	7907.430	105	2416.15	-124.330	-133.840	-143.350	-148.100	-152.850	-157.610	-162.360	-171.670	-181.370	-188.030	
426.516	7907.825	106	2304.43	-121.640	-130.790	-139.940	-144.510	-149.080	-153.660	-158.230	-167.380	-176.520	-182.920	
425.790	7907.875	107	2229.89	-120.340	-129.280	-138.220	-142.690	-147.160	-151.630	-156.100	-165.040	-173.960	-180.240	
439.830	7900.060	108	2906.73	-136.510	-147.970	-159.440	-165.170	-170.900	-176.640	-182.370	-193.830	-205.300	-213.330	
438.970	7900.017	109	2869.36	-134.800	-146.130	-157.450	-163.120	-168.780	-174.440	-180.110	-191.430	-202.760	-210.690	
438.128	7899.962	110	2748.36	-136.170	-147.130	-158.080	-163.580	-169.040	-174.520	-180.000	-191.430	-202.760	-209.590	
437.198	7899.987	111	2717.71	-137.780	-148.580	-159.390	-164.790	-170.200	-175.600	-181.000	-191.810	-202.820	-210.180	
436.449	7899.933	112	2635.32	-139.160	-149.690	-160.220	-165.490	-170.750	-176.020	-181.280	-191.810	-202.340	-209.710	
435.781	7899.501	113	2545.38	-141.070	-151.270	-161.460	-166.580	-171.680	-176.750	-181.810	-191.490	-201.170	-207.940	
435.615	7900.310	114	2503.43	-140.590	-150.810	-160.630	-165.640	-170.650	-175.660	-180.670	-190.690	-200.710	-207.730	
434.768	7900.397	115	2428.56	-143.110	-152.790	-162.460	-167.300	-172.140	-176.980	-181.810	-191.490	-201.170	-207.940	
433.903	7900.518	116	2342.46	-143.790	-153.040	-162.280	-166.900	-171.520	-176.140	-180.760	-190.000	-199.250	-205.720	
448.228	7898.007	117	3266.52	-148.380	-161.360	-174.340	-180.830	-187.330	-193.820	-200.310	-213.290	-226.270	-235.360	
445.458	7898.517	118	3222.95	-149.890	-162.720	-175.540	-181.960	-188.370	-194.790	-201.200	-214.030	-226.850	-235.830	
444.794	7898.903	119	3184.41	-149.870	-162.510	-175.160	-181.480	-187.800	-194.120	-200.450	-213.090	-225.730	-234.580	
443.942	7899.037	120	3066.89	-149.700	-162.020	-174.350	-180.520	-186.680	-192.850	-199.010	-211.340	-223.670	-232.300	
443.060	7899.103	121	3063.50	-148.820	-161.030	-173.240	-179.350	-185.450	-191.560	-197.660	-209.870	-222.080	-230.630	
442.296	7899.439	122	3036.29	-146.590	-158.620	-170.650	-176.670	-182.680	-188.700	-194.720	-206.750	-218.780	-227.200	
441.397	7899.539	123	3001.23	-143.850	-155.730	-167.810	-173.560	-179.500	-185.440	-191.380	-203.260	-215.140	-223.460	
440.596	7899.835	124	2927.07	-139.990	-151.590	-163.190	-168.980	-174.780	-180.580	-186.380	-197.990	-209.570	-217.690	
432.383	7902.630	125	2055.09	-141.170	-149.220	-157.270	-163.300	-169.320	-175.350	-181.370	-189.420	-199.470	-209.510	
432.305	7902.028	126	2037.83	-141.010	-149.040	-157.070	-163.090	-169.120	-175.140	-181.170	-189.210	-199.250	-209.290	
431.703	7901.394	127	1981.34	-140.480	-148.230	-156.990	-162.970	-168.970	-174.970	-180.970	-189.000	-199.030	-209.060	
430.947	7901.434	128	1934.97	-138.700	-146.240	-154.770	-161.310	-167.850	-174.390	-180.930	-189.000	-199.030	-209.060	
430.085	7901.647	129	1960.32	-135.570	-143.030	-150.500	-157.540	-164.580	-171.620	-178.660	-186.730	-194.790	-202.860	
429.234	7901.704	130	1904.60	-131.580	-138.800	-145.630	-149.140	-152.650	-156.160	-159.680	-166.700	-173.720	-178.640	
430.793	7898.496	131	2550.39	-130.090	-139.950	-149.810	-154.750	-159.680	-164.610	-169.540	-179.400	-189.260	-196.160	
430.079	7898.992	132	2566.90	-128.180	-137.900	-147.630	-152.490	-157.350	-162.210	-167.070	-176.900	-186.520	-193.330	
429.221	7899.294	133	2416.05	-126.730	-135.970	-145.220	-149.840	-154.460	-159.080	-163.710	-172.950	-182.200	-188.670	
428.408	7899.394	134	2303.49	-124.700	-133.540	-142.390	-146.810	-151.230	-155.650	-160.070	-168.920	-177.760	-183.960	
427.496	7899.167	135	2271.41	-121.360	-130.140	-138.930	-143.320	-147.710	-152.100	-156.500	-165.280	-174.070	-180.210	
426.696	7899.121	136	2287.39	-118.050	-126.820	-135.590	-139.970	-144.350	-148.730	-153.120	-161.880	-170.650	-176.780	
425.922	7899.183	137	2282.57	-115.780	-124.380	-132.970	-137.270	-141.570	-145.870	-150.170	-158.770	-167.370	-173.390	
449.750	7900.103	138	3557.58	-153.850	-167.750	-181.650	-188.600	-195.540	-202.490	-209.440	-223.340	-237.240	-246.970	
449.096	7900.615	139	3445.66	-154.800	-168.300	-181.800	-188.550	-195.300	-202.050	-208.800	-222.300	-235.810	-245.260	
448.381	7901.040	140	3321.22	-156.000	-169.160	-182.320	-188.900	-195.470	-202.050	-208.630	-221.790	-234.940	-244.150	
447.679	7901.645	141	3279.98	-156.090	-169.070	-182.040	-188.590	-195.010	-201.500	-207.990	-220.960	-233.940	-243.020	
447.013	7901.977	142	3270.54	-156.020	-168.890	-181.780	-188.200	-194.630	-201.070	-207.510	-220.380	-233.250	-242.260	
446.452	7902.521	143	3204.82	-155.640	-168.150	-180.660	-186.920	-193.180	-199.430	-205.690	-218.200	-230.710	-239.460	
445.666	7902.805	144	3135.17	-156.290	-168.420	-180.550	-186.620	-192.680	-198.750	-204.810	-216.950	-229.080	-237.570	
444.539	7902.609	145	3092.26	-155.460	-167.470	-179.490	-185.490	-191.500	-197.510	-203.520	-215.530	-227.540	-235.960	
431.729	7904.083	146	1578.93	-143.520	-149.320	-155.120	-158.020	-160.920	-163.820	-166.720	-172.520	-178.320	-182.380	
432.521	7904.165	147	1706.56	-143.500	-149.980	-156.450	-159.690	-162.930	-166.170	-169.410	-175.890	-182.360	-186.900	
433.200	7903.823	148	1737.14	-141.950	-148.390	-154.820	-158.040	-161.260	-164.480	-167.700	-174.140	-180.570	-185.080	
431.076	7903.600	149	1338.17	-144.440	-148.850	-153.260	-155.470	-157.670	-159.880	-162.080	-166.490	-170.910	-173.990	
431.995	7904.940	150	1392.50	-144.360	-149.040	-153.710	-156.050	-158.390	-160.730	-163.060	-167.740	-172.410	-175.690	

***** GRAVITY SURVEY IN CAMARONES, REGION I, CHILE (2000) *****				BOUGUER ANOMALY VALUES (mgal) [FREE AIR GRADIENT = -0.3000 mgal/m]											
UTM COORDINATES(km)		STATION	ELAVATION												
<X>	<Y>	No.	m	<2.00>	<2.10>	<2.20>	<2.25>	<2.30>	<2.35>	<2.40>	<2.50>	<2.60>	<2.67>		
450.133	7912.781	151	3222.16	-164.200	-177.110	-190.010	-196.470	-202.920	-209.370	-215.830	-228.740	-241.640	-250.680		
449.554	7912.217	152	3169.09	-161.620	-174.310	-186.990	-193.330	-199.670	-206.010	-212.360	-225.040	-237.720	-246.600		
448.652	7911.716	153	3131.74	-158.390	-170.900	-183.420	-189.670	-195.930	-202.180	-208.440	-220.950	-233.460	-242.220		
448.115	7910.736	154	3093.17	-157.830	-170.190	-182.560	-188.740	-194.920	-201.100	-207.290	-219.650	-232.010	-240.670		
448.633	7910.733	155	3127.57	-161.240	-173.720	-186.210	-192.450	-198.690	-204.940	-211.180	-223.670	-236.150	-244.890		
449.741	7910.496	158	3212.32	-163.510	-176.350	-189.180	-195.600	-202.020	-208.440	-214.860	-227.700	-240.530	-249.520		
447.357	7910.777	157	3067.47	-155.800	-168.080	-180.360	-186.500	-192.640	-198.790	-204.920	-217.200	-229.480	-238.070		
446.633	7910.513	158	3029.05	-154.670	-166.790	-178.910	-184.970	-191.020	-197.080	-203.140	-215.260	-227.370	-235.860		
445.845	7910.211	159	2990.44	-157.790	-169.750	-181.710	-187.690	-193.660	-199.640	-205.620	-217.580	-229.540	-237.910		
445.074	7909.880	160	2950.28	-153.120	-164.930	-176.730	-182.630	-188.530	-194.430	-200.330	-212.130	-223.930	-232.190		
444.273	7909.639	161	2913.28	-152.120	-163.750	-175.390	-181.210	-187.030	-192.850	-198.670	-210.310	-221.940	-230.090		
443.427	7908.537	162	2890.93	-150.890	-162.370	-173.850	-179.600	-185.340	-191.080	-196.820	-208.310	-219.790	-227.830		
442.401	7910.356	163	2994.47	-148.290	-160.180	-172.070	-178.010	-183.960	-189.900	-195.840	-207.730	-219.620	-227.940		
443.075	7910.417	164	3028.75	-151.290	-163.350	-175.410	-181.440	-187.470	-193.500	-199.530	-211.590	-223.650	-232.090		
443.888	7911.007	165	3179.51	-152.570	-165.170	-177.780	-184.080	-190.380	-196.690	-202.990	-215.600	-228.200	-237.030		
442.582	7909.273	166	2854.68	-150.330	-161.870	-173.010	-178.680	-184.350	-190.010	-195.680	-207.020	-218.360	-226.300		
441.797	7908.242	167	2810.82	-150.210	-161.320	-172.430	-177.980	-183.540	-189.100	-194.650	-205.760	-216.870	-224.650		
440.994	7909.554	168	2851.50	-149.950	-161.280	-172.580	-178.230	-183.890	-189.550	-195.200	-206.520	-217.830	-225.750		
441.800	7910.137	169	2854.90	-149.180	-160.580	-171.930	-177.620	-183.310	-189.000	-194.690	-206.070	-217.440	-225.410		
440.284	7909.958	170	2847.90	-149.870	-161.220	-172.560	-178.240	-183.910	-189.580	-195.250	-206.600	-217.940	-225.890		
439.359	7909.914	171	2806.74	-149.270	-160.470	-171.660	-177.260	-182.860	-188.460	-194.050	-205.250	-216.440	-224.280		
438.561	7909.948	172	2776.80	-149.060	-160.120	-171.180	-176.710	-182.240	-187.770	-193.300	-204.360	-215.420	-223.170		
437.891	7909.856	173	2743.67	-148.660	-159.550	-170.440	-175.890	-181.340	-186.780	-192.230	-203.130	-214.020	-221.640		
437.027	7910.047	174	2672.18	-148.670	-157.310	-167.960	-173.280	-178.600	-183.920	-189.240	-199.880	-210.520	-217.970		
436.157	7909.983	175	2618.99	-145.370	-155.800	-166.240	-171.450	-176.870	-181.890	-187.100	-197.530	-207.970	-215.270		
435.277	7909.912	176	2542.62	-143.800	-153.930	-164.070	-169.140	-174.210	-179.270	-184.340	-194.480	-204.620	-211.710		
434.421	7909.462	177	2476.04	-141.680	-151.520	-161.370	-166.290	-171.210	-176.130	-181.060	-190.900	-200.750	-207.640		
433.800	7909.472	178	2457.82	-139.430	-149.200	-158.980	-163.840	-168.730	-173.610	-178.490	-188.250	-198.020	-204.850		
432.734	7909.605	179	2439.28	-138.000	-147.760	-157.520	-162.410	-167.290	-172.170	-177.050	-186.810	-196.570	-203.410		
432.020	7909.705	180	2427.70	-136.090	-145.820	-155.550	-160.410	-165.280	-170.140	-175.010	-184.740	-194.470	-201.280		
431.179	7909.541	181	2379.89	-133.780	-143.250	-152.720	-157.480	-162.200	-166.930	-171.670	-181.140	-190.620	-197.250		
430.208	7909.914	182	2351.00	-131.790	-141.160	-150.540	-155.220	-159.910	-164.600	-169.290	-178.660	-188.040	-194.600		
432.061	7910.598	183	2515.06	-138.430	-146.530	-158.640	-163.690	-168.740	-173.790	-178.850	-188.950	-199.060	-206.130		
431.355	7910.517	184	2520.43	-136.140	-146.240	-158.350	-163.400	-168.460	-173.510	-178.570	-188.680	-198.790	-203.660		
430.519	7910.589	185	2503.01	-133.800	-143.850	-153.900	-158.930	-163.950	-168.980	-174.000	-184.050	-194.100	-201.140		
429.569	7910.710	186	2488.65	-130.180	-140.130	-150.070	-155.050	-160.020	-164.990	-169.970	-179.910	-189.860	-196.820		
429.978	7911.649	187	2459.59	-132.770	-142.680	-152.600	-157.560	-162.520	-167.470	-172.430	-182.350	-192.270	-199.210		
429.201	7911.569	188	2485.17	-129.960	-139.900	-149.840	-154.810	-159.790	-164.760	-169.730	-179.670	-189.610	-196.570		
428.352	7911.454	189	2439.78	-126.390	-136.170	-145.950	-150.840	-155.730	-160.620	-165.510	-175.280	-185.060	-191.910		
427.503	7911.183	190	2346.02	-123.520	-132.930	-142.330	-147.040	-151.740	-156.440	-161.150	-170.550	-179.960	-186.540		
426.429	7911.095	191	2227.49	-120.090	-128.960	-137.820	-142.260	-146.690	-151.120	-155.560	-164.430	-173.290	-179.500		
429.658	7912.509	192	2353.09	-132.550	-142.020	-151.480	-156.210	-160.950	-165.680	-170.410	-179.880	-189.340	-195.970		
429.048	7913.031	193	2331.55	-130.830	-140.230	-149.640	-154.340	-159.050	-163.750	-168.450	-177.860	-187.260	-193.850		
428.896	7913.407	194	2364.76	-129.750	-139.290	-148.840	-153.610	-158.380	-163.160	-167.930	-177.480	-187.020	-193.700		
428.395	7914.049	195	2214.25	-128.470	-137.240	-146.020	-150.400	-154.790	-159.170	-163.560	-172.330	-181.110	-187.250		
437.991	7915.311	196	3074.70	-148.580	-160.800	-173.030	-179.140	-185.250	-191.360	-197.470	-209.690	-221.920	-230.470		
437.253	7915.058	197	3025.27	-149.460	-161.520	-173.580	-179.610	-185.640	-191.680	-197.710	-209.770	-221.830	-230.280		
436.436	7914.762	198	2896.41	-146.970	-158.590	-170.210	-176.020	-181.830	-187.640	-193.450	-205.070	-216.690	-224.830		
435.873	7914.006	199	2694.35	-143.250	-153.970	-164.700	-170.060	-175.430	-180.790	-186.150	-196.880	-207.600	-215.110		
436.311	7913.595	200	2853.51	-148.930	-158.370	-168.810	-175.530	-181.250	-186.970	-192.690	-204.140	-215.580	-223.590		

***** GRAVITY SURVEY IN CAMARONES REGION I, CHILE (2000) *****

UTM COORDINATES(km)		STATION	ELEVATION	BOUGUER ANOMALY VALUES (mgal) [FREE AIR GRADIENT = -0.3000 mgal/m]											
<X>	<Y>	No.	m	<2.00>	<2.10>	<2.20>	<2.25>	<2.30>	<2.35>	<2.40>	<2.50>	<2.60>	<2.67>		
437.159	7913.593	201	2926.72	-148.040	-159.770	-171.490	-177.350	-183.210	-189.080	-194.940	-206.660	-218.390	-226.590		
437.973	7913.679	202	2974.78	-148.420	-180.330	-172.230	-178.180	-184.140	-190.090	-196.040	-207.940	-219.850	-228.180		
435.103	7913.536	203	2711.66	-144.320	-155.220	-166.120	-171.570	-177.020	-182.460	-187.930	-198.830	-209.730	-217.360		
434.285	7913.780	204	2662.25	-143.620	-154.320	-165.020	-170.390	-175.730	-181.080	-186.430	-197.130	-207.840	-215.330		
433.471	7914.137	205	2602.20	-141.810	-152.280	-162.780	-168.000	-173.240	-178.470	-183.710	-194.190	-204.670	-212.000		
432.432	7914.277	206	2568.33	-140.230	-150.570	-160.900	-166.070	-171.240	-176.410	-181.580	-192.250	-202.500	-209.480		
431.546	7914.457	207	2532.16	-138.170	-148.360	-158.550	-163.840	-169.130	-174.420	-179.710	-189.100	-199.290	-206.420		
430.856	7914.695	208	2488.65	-136.540	-146.550	-156.580	-161.570	-166.570	-171.580	-176.580	-186.590	-196.610	-203.610		
430.062	7914.788	209	2417.20	-134.440	-144.190	-153.940	-158.810	-163.690	-168.560	-173.430	-183.180	-192.930	-199.750		
429.358	7914.455	210	2363.20	-132.770	-142.290	-151.810	-156.570	-161.330	-166.090	-170.850	-180.360	-189.880	-196.550		
442.656	7914.378	211	3098.60	-149.550	-161.990	-174.420	-180.630	-186.850	-193.070	-199.280	-211.710	-224.150	-232.650		
441.872	7913.910	212	3056.03	-146.700	-158.980	-171.250	-177.390	-183.530	-189.670	-195.810	-208.080	-220.360	-228.950		
441.168	7913.483	213	3048.15	-147.650	-159.880	-172.100	-178.220	-184.330	-190.450	-196.560	-208.790	-221.020	-229.580		
440.303	7913.234	214	3009.33	-147.250	-159.310	-171.360	-177.390	-183.420	-189.450	-195.470	-207.530	-219.580	-228.020		
439.467	7912.939	215	2974.72	-148.350	-160.260	-172.170	-178.130	-184.080	-190.040	-196.000	-207.910	-219.820	-228.160		
438.631	7912.688	216	2979.88	-148.090	-160.960	-172.830	-178.770	-184.710	-190.640	-196.580	-208.450	-220.330	-228.640		
437.965	7912.468	217	2923.29	-148.780	-160.420	-172.070	-177.890	-183.710	-189.530	-195.350	-206.990	-218.640	-226.780		
437.240	7912.288	218	2838.54	-147.910	-159.280	-170.640	-176.320	-182.000	-187.680	-193.360	-204.720	-216.080	-224.040		
448.945	7913.789	219	3556.69	-159.570	-173.670	-187.780	-194.830	-201.880	-208.930	-215.980	-230.080	-244.190	-254.060		
448.315	7913.357	220	3537.58	-156.870	-170.880	-184.890	-191.890	-198.900	-205.900	-212.910	-226.920	-240.930	-250.740		
447.488	7913.274	221	3486.25	-155.840	-168.690	-183.540	-190.460	-197.380	-204.310	-211.230	-225.080	-238.930	-248.620		
446.664	7913.066	222	3431.29	-154.950	-168.550	-182.150	-188.950	-195.760	-202.560	-209.360	-222.960	-236.560	-246.080		
445.868	7912.840	223	3369.22	-153.640	-166.960	-180.280	-186.940	-193.600	-200.260	-206.920	-220.240	-233.560	-242.880		
445.190	7912.856	224	3389.81	-151.340	-164.640	-177.950	-184.600	-191.250	-197.900	-204.550	-217.860	-231.160	-240.480		
444.437	7912.561	225	3350.33	-149.130	-162.360	-175.590	-182.210	-188.820	-195.440	-202.050	-215.280	-228.510	-237.780		
443.696	7912.235	226	3312.52	-149.360	-162.400	-175.440	-181.960	-188.490	-195.010	-201.530	-214.570	-227.610	-236.740		
443.087	7912.010	227	3156.45	-149.070	-161.680	-174.290	-180.590	-186.900	-193.200	-199.510	-212.120	-224.730	-233.560		
442.208	7911.817	228	3197.63	-150.080	-162.650	-175.220	-181.510	-187.790	-194.080	-200.360	-212.940	-225.510	-234.310		
441.020	7911.665	229	3118.98	-150.420	-162.790	-175.160	-181.340	-187.520	-193.710	-199.890	-212.260	-224.620	-233.280		
440.209	7911.618	230	2942.74	-149.050	-160.840	-172.620	-178.510	-184.400	-190.290	-196.190	-207.970	-219.750	-228.000		
431.802	7908.818	231	2516.39	-136.640	-146.520	-156.400	-161.350	-166.290	-171.230	-176.170	-186.060	-195.940	-202.860		
431.024	7908.691	232	2512.45	-134.280	-144.120	-153.950	-158.870	-163.790	-168.710	-173.630	-183.460	-193.300	-200.190		
430.207	7908.555	233	2462.79	-132.580	-142.260	-151.930	-156.770	-161.610	-166.450	-171.290	-180.960	-190.640	-197.410		
429.440	7908.278	234	2496.19	-130.500	-140.160	-149.820	-154.650	-159.480	-164.310	-169.140	-178.800	-188.460	-195.220		
429.072	7908.805	235	2491.72	-128.220	-138.080	-147.950	-152.880	-157.810	-162.750	-167.680	-177.540	-187.410	-194.310		
428.311	7909.313	236	2461.09	-126.330	-136.140	-145.960	-150.860	-155.770	-160.670	-165.580	-175.390	-185.200	-192.070		
427.671	7909.797	237	2422.62	-124.310	-133.970	-143.630	-148.460	-153.280	-158.110	-162.940	-172.600	-182.250	-189.010		
426.928	7909.959	238	2342.39	-122.240	-131.550	-140.880	-145.510	-150.170	-154.820	-159.480	-168.790	-178.100	-184.620		
426.023	7910.076	239	2208.64	-120.290	-129.170	-138.060	-142.500	-146.940	-151.380	-155.830	-164.710	-173.590	-179.810		
425.220	7910.058	240	2205.70	-118.520	-127.330	-136.150	-140.580	-144.960	-149.370	-153.780	-162.600	-171.410	-177.580		
439.912	7901.223	241	2768.18	-140.630	-151.450	-162.280	-167.690	-173.100	-178.510	-183.920	-194.750	-205.570	-213.150		
439.372	7901.659	242	2682.38	-138.260	-148.830	-159.390	-164.870	-169.960	-175.240	-180.520	-191.090	-201.650	-209.050		
438.695	7902.074	243	2819.55	-138.800	-149.690	-160.580	-166.020	-171.470	-176.910	-182.350	-193.240	-204.130	-211.760		
438.312	7902.928	244	2763.95	-140.830	-151.540	-162.250	-167.610	-172.960	-178.320	-183.670	-194.380	-205.090	-212.590		
437.730	7903.501	245	2757.91	-143.220	-153.850	-164.480	-169.800	-175.120	-180.440	-185.750	-196.390	-207.020	-214.470		
437.005	7903.862	246	2666.70	-143.910	-154.160	-164.410	-169.530	-174.650	-179.780	-184.900	-195.150	-205.390	-212.570		
436.237	7904.376	247	2489.00	-143.530	-152.990	-162.460	-167.190	-171.930	-176.660	-181.390	-190.860	-200.330	-206.950		
448.696	7898.583	248	3430.75	-152.240	-165.830	-179.420	-186.210	-193.000	-199.800	-206.590	-220.170	-233.760	-243.270		
447.943	7898.955	249	3349.03	-153.470	-166.800	-180.140	-186.810	-193.470	-200.140	-206.810	-220.140	-233.480	-242.810		
447.200	7899.530	250	3291.33	-153.320	-166.400	-179.490	-186.030	-192.580	-199.120	-205.660	-218.750	-231.830	-240.990		

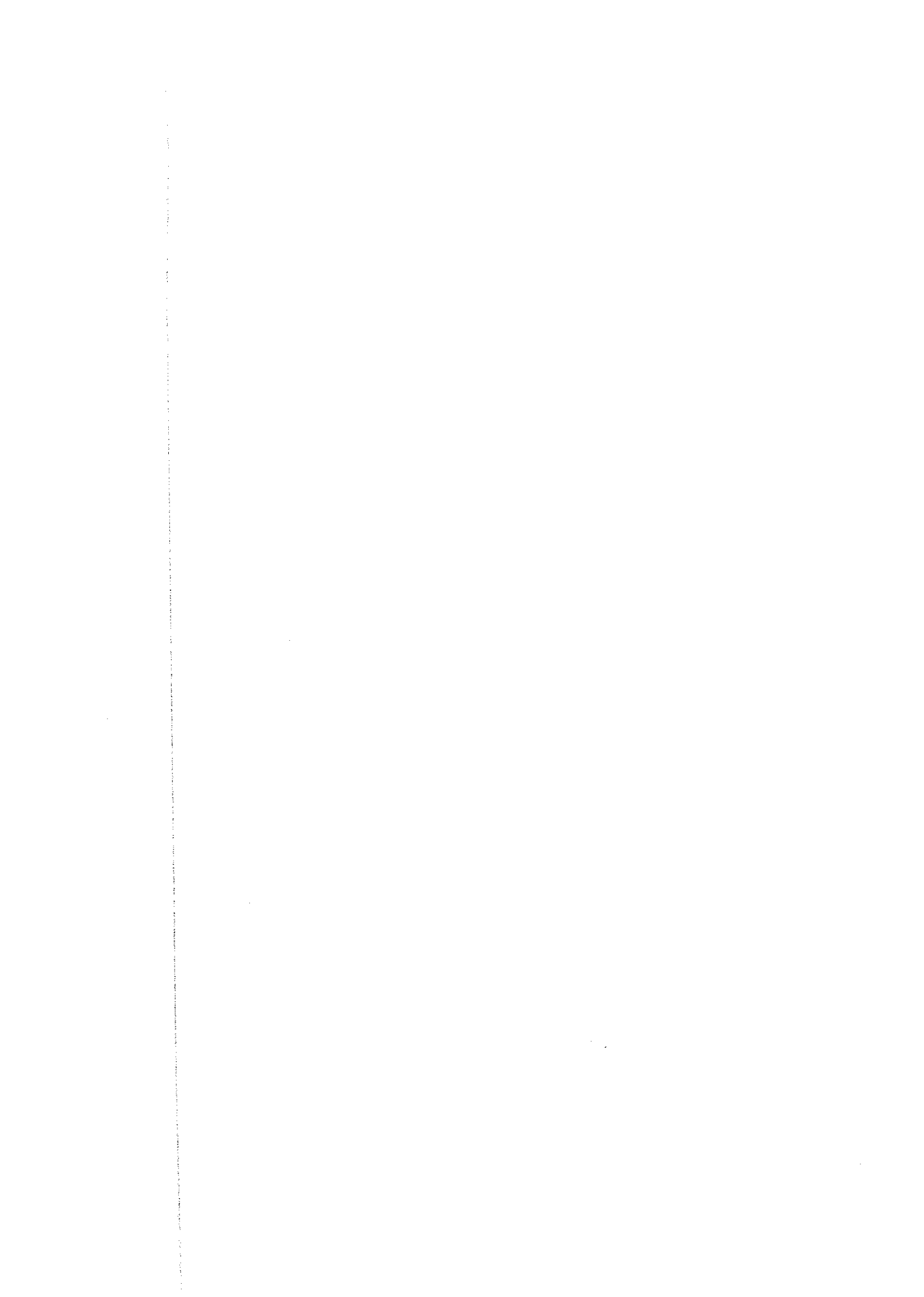
- 85 -

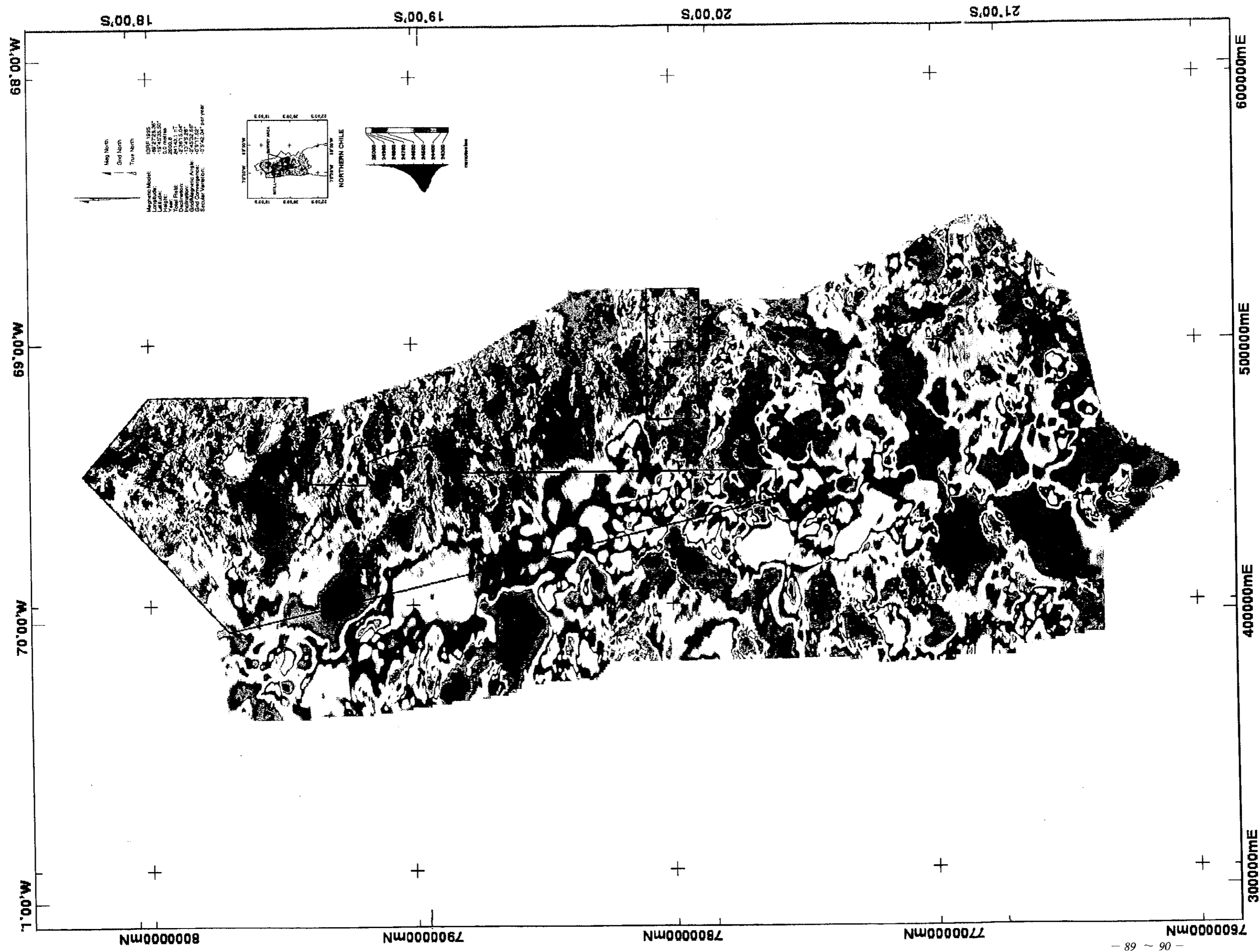
***** GRAVITY SURVEY IN CAMARONES, REGION I, CHILE (2000) *****

UTM COORDINATES(km)		STATION	ELEVATION	BOUGUER ANOMALY VALUES (mgal) [FREE AIR GRADIENT = -0.3000 mgal/m]									
<X>	<Y>	No.	m	<2.00>	<2.10>	<2.20>	<2.25>	<2.30>	<2.35>	<2.40>	<2.50>	<2.60>	<2.67>
448.388	7899.849	251	3252.28	-152.400	-165.290	-178.180	-184.630	-191.070	-197.520	-203.960	-216.850	-229.740	-238.760
445.775	7900.381	252	3166.35	-153.150	-165.750	-178.360	-184.670	-190.970	-197.270	-203.580	-216.190	-228.800	-237.620
444.942	7900.728	253	3104.18	-152.930	-165.280	-177.590	-183.750	-189.920	-196.080	-202.250	-214.580	-226.910	-235.540
444.071	7901.183	254	3037.00	-153.950	-166.000	-178.060	-184.080	-190.110	-196.140	-202.170	-214.220	-226.270	-234.710
443.457	7901.918	255	3010.30	-153.170	-165.020	-178.880	-182.810	-188.730	-194.660	-200.590	-212.450	-224.300	-232.600
442.740	7902.498	256	2848.79	-153.790	-164.950	-178.110	-181.690	-187.270	-192.860	-198.440	-209.600	-220.770	-228.580
437.988	7902.086	257	2782.98	-139.900	-150.830	-161.760	-167.220	-172.690	-178.150	-183.610	-194.540	-205.470	-213.120
437.100	7902.094	258	2702.01	-140.970	-151.670	-162.380	-167.730	-173.080	-178.430	-183.790	-194.490	-205.190	-212.690
436.332	7902.116	259	2607.39	-140.460	-150.820	-161.190	-166.370	-171.560	-176.740	-181.920	-192.290	-202.660	-209.910
435.515	7902.074	260	2571.11	-141.320	-151.520	-161.710	-166.810	-171.910	-177.010	-182.110	-192.300	-202.500	-209.640
434.341	7901.396	261	2417.04	-142.840	-152.420	-162.000	-166.780	-171.570	-176.360	-181.150	-190.720	-200.300	-207.000
434.689	7902.160	262	2515.47	-142.270	-152.180	-162.090	-167.040	-172.000	-176.950	-181.910	-191.810	-201.720	-208.660
433.909	7902.471	263	2382.40	-141.830	-151.070	-160.310	-164.930	-169.540	-174.160	-178.780	-188.020	-197.250	-203.720
433.225	7903.029	264	2233.12	-142.270	-150.780	-159.300	-163.550	-167.810	-172.070	-176.320	-184.830	-193.350	-199.300
436.835	7897.168	265	2710.78	-136.650	-147.470	-158.280	-163.690	-169.100	-174.500	-179.910	-190.730	-201.540	-209.110
436.078	7898.955	266	2734.63	-137.150	-147.980	-158.810	-164.220	-169.630	-175.050	-180.460	-191.290	-202.110	-209.690
435.190	7897.143	267	2667.30	-137.710	-148.350	-158.990	-164.310	-169.630	-174.950	-180.270	-190.910	-201.550	-209.000
434.629	7897.733	268	2654.31	-138.730	-149.270	-159.800	-165.070	-170.330	-175.600	-180.870	-191.400	-201.930	-209.300
433.879	7898.182	269	2601.16	-138.810	-149.130	-159.440	-164.600	-169.760	-174.920	-180.080	-190.400	-200.710	-207.930
433.003	7897.945	270	2597.82	-136.120	-146.340	-156.570	-161.680	-166.790	-171.910	-177.020	-187.240	-197.470	-204.630
432.141	7897.860	271	2636.41	-132.910	-143.230	-153.550	-158.700	-163.860	-169.020	-174.180	-184.490	-194.810	-202.030
431.283	7897.883	272	2609.60	-130.140	-140.360	-150.580	-155.700	-160.810	-165.920	-171.030	-181.250	-191.480	-198.630
449.718	7908.598	273	3421.51	-160.380	-173.880	-187.410	-194.170	-200.930	-207.690	-214.460	-227.980	-241.510	-250.970
448.667	7908.694	274	3282.08	-158.750	-171.800	-184.850	-191.380	-197.900	-204.430	-210.950	-224.000	-237.050	-246.190
447.599	7908.811	275	3250.00	-156.390	-169.230	-182.070	-188.490	-194.920	-201.340	-207.760	-220.610	-233.450	-242.440
446.518	7908.641	276	3205.70	-154.680	-167.270	-179.870	-186.160	-192.460	-198.760	-205.050	-217.650	-230.240	-239.060
445.859	7908.837	277	3163.62	-154.330	-166.710	-179.100	-185.290	-191.490	-197.680	-203.870	-216.260	-228.640	-237.310
445.042	7908.562	278	3092.19	-154.670	-166.720	-178.770	-184.800	-190.830	-196.850	-202.880	-214.930	-226.980	-235.420
444.206	7908.491	279	3014.88	-153.180	-164.930	-176.670	-182.540	-188.410	-194.290	-200.160	-211.900	-223.650	-231.870
443.373	7908.309	280	2927.51	-152.950	-164.240	-175.520	-181.160	-186.810	-192.450	-198.090	-209.380	-220.670	-228.570
445.812	7904.911	281	2246.79	-165.630	-174.090	-182.550	-186.780	-191.010	-195.240	-199.470	-209.930	-216.390	-222.310
445.200	7904.153	282	2418.36	-157.650	-166.960	-178.270	-180.920	-185.580	-190.230	-194.890	-204.190	-213.500	-220.020
444.247	7904.297	283	2414.48	-157.200	-166.580	-175.960	-180.680	-185.350	-190.040	-194.730	-204.110	-213.500	-220.070
443.522	7904.089	284	2465.18	-157.190	-166.820	-176.460	-181.270	-186.090	-190.910	-195.720	-205.360	-214.990	-221.740
442.667	7903.988	285	2458.91	-156.430	-165.990	-175.550	-180.330	-185.110	-189.880	-194.660	-204.220	-213.780	-220.470
443.919	7904.986	286	2324.67	-157.810	-166.790	-175.760	-180.250	-184.730	-189.220	-193.700	-202.680	-211.650	-217.930
440.099	7904.748	287	1848.67	-154.640	-161.200	-167.760	-171.040	-174.320	-177.610	-180.890	-187.450	-194.010	-198.500
439.437	7905.686	288	1755.40	-154.470	-160.590	-166.720	-169.780	-172.850	-175.910	-178.970	-185.100	-191.230	-195.520
440.221	7905.437	289	1793.28	-156.200	-162.540	-168.870	-172.040	-175.210	-178.380	-181.550	-187.890	-194.230	-198.660
425.001	7916.329	290	2346.67	-118.180	-127.810	-137.050	-141.770	-146.480	-151.200	-155.920	-163.350	-174.790	-181.390
425.918	7915.997	291	2393.42	-119.400	-129.050	-138.700	-143.520	-148.340	-153.170	-157.990	-167.640	-177.280	-184.030
426.687	7915.589	292	2426.09	-121.130	-130.910	-140.690	-145.570	-150.460	-155.350	-160.240	-170.020	-179.790	-186.640
427.475	7915.225	293	2454.61	-123.920	-133.830	-143.730	-148.680	-153.630	-158.580	-163.530	-173.430	-183.340	-190.270
428.285	7914.924	294	2419.46	-128.430	-138.190	-147.960	-152.840	-157.720	-162.600	-167.480	-177.240	-187.000	-193.840
429.035	7915.207	295	2439.52	-131.490	-141.330	-151.170	-156.090	-161.010	-165.930	-170.850	-180.680	-190.520	-197.410
430.501	7915.483	296	2500.39	-135.360	-145.440	-155.510	-160.550	-165.590	-170.620	-175.660	-185.740	-195.810	-202.860
429.813	7916.006	297	2486.33	-133.180	-143.180	-153.210	-158.220	-163.240	-168.250	-173.260	-183.290	-193.310	-200.330
428.983	7916.189	298	2433.55	-131.570	-141.400	-151.230	-156.150	-161.060	-165.980	-170.890	-180.730	-190.560	-197.440
428.549	7917.017	299	2389.90	-130.280	-139.930	-149.580	-154.400	-159.220	-164.040	-168.870	-178.510	-188.160	-194.910
429.344	7917.016	300	2482.47	-131.780	-141.740	-151.680	-156.650	-161.620	-166.590	-171.560	-181.510	-191.450	-198.410

***** GRAVITY SURVEY IN CAMARONES, REGION I, CHILE (2000) *****

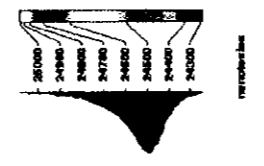
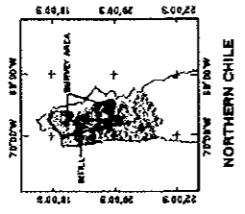
UTM COORDINATES(km)		STATION	ELAVATION	BOUGUER ANOMALY VALUES (mgal) [FREE AIR GRADIENT = -0.3000 mgal/m]										
<X>	<Y>	No.	m	<2.00>	<2.10>	<2.20>	<2.25>	<2.30>	<2.35>	<2.40>	<2.50>	<2.60>	<2.67>	
430.181	7916.933	301	2501.85	-133.420	-143.510	-153.610	-158.660	-163.710	-168.760	-173.810	-183.910	-194.010	-201.080	
430.986	7916.904	302	2544.08	-135.680	-145.940	-156.190	-161.310	-166.440	-171.560	-176.690	-186.940	-197.190	-204.370	
431.804	7916.812	303	2570.40	-138.070	-148.360	-158.650	-163.790	-168.940	-174.080	-179.220	-189.510	-199.800	-207.000	
428.140	7916.063	304	2414.15	-128.990	-138.740	-148.500	-153.380	-158.260	-163.140	-168.010	-177.770	-187.530	-194.360	
434.726	7911.268	305	2672.23	-145.460	-156.160	-166.870	-172.220	-177.570	-182.920	-188.280	-198.980	-209.680	-217.180	
438.964	7911.475	306	2907.72	-148.680	-160.310	-171.950	-177.770	-183.590	-189.410	-195.220	-206.860	-218.500	-226.640	
438.013	7911.453	307	2898.48	-149.530	-161.090	-172.640	-178.410	-184.190	-189.970	-195.740	-207.290	-218.850	-226.930	
437.178	7911.385	308	2858.90	-148.190	-159.590	-170.980	-176.670	-182.370	-188.060	-193.760	-205.150	-216.540	-224.520	
436.405	7911.440	309	2829.46	-147.720	-159.020	-170.320	-175.970	-181.620	-187.270	-192.920	-204.220	-215.520	-223.430	
435.616	7911.425	310	2782.57	-148.890	-157.990	-169.100	-174.650	-180.210	-185.760	-191.310	-202.420	-213.530	-221.300	
433.736	7911.068	311	2633.91	-143.490	-154.000	-164.510	-169.770	-175.020	-180.280	-185.530	-196.040	-206.550	-213.910	
433.291	7910.855	312	2587.53	-142.230	-152.590	-162.940	-168.120	-173.300	-178.480	-183.660	-194.010	-204.370	-211.620	
438.527	7905.903	313	1705.76	-156.120	-161.990	-167.870	-170.810	-173.750	-176.690	-179.620	-185.500	-191.380	-195.490	
437.499	7905.949	314	1660.70	-155.340	-161.030	-166.720	-169.560	-172.410	-175.250	-178.100	-183.790	-189.480	-193.460	
436.685	7906.237	315	1617.03	-153.090	-158.520	-163.940	-166.650	-169.370	-172.080	-174.790	-180.220	-185.650	-189.440	
435.765	7906.015	316	1575.58	-150.660	-155.980	-161.290	-163.940	-166.600	-169.250	-171.910	-177.220	-182.530	-186.250	
434.691	7905.794	317	1526.46	-148.030	-153.200	-158.370	-160.950	-163.540	-166.120	-168.700	-173.870	-179.040	-182.660	
433.137	7905.188	318	1447.26	-145.700	-150.540	-155.390	-157.820	-160.240	-162.660	-165.090	-169.940	-174.780	-178.180	
433.139	7917.717	401	2675.61	-140.450	-151.210	-161.970	-167.350	-172.730	-178.110	-183.490	-194.250	-205.010	-212.540	
432.234	7917.983	402	2621.76	-138.410	-148.950	-159.480	-164.750	-170.010	-175.280	-180.550	-191.080	-201.610	-208.990	
431.263	7918.136	403	2566.06	-135.610	-146.090	-156.370	-161.510	-166.660	-171.800	-176.940	-187.220	-197.500	-204.700	
431.420	7919.202	404	2606.33	-135.640	-146.130	-156.610	-161.850	-167.090	-172.340	-177.580	-188.060	-198.540	-205.880	
430.492	7919.411	405	2549.81	-132.540	-142.770	-153.010	-158.190	-163.250	-168.370	-173.480	-183.720	-193.960	-201.120	
429.517	7919.431	406	2466.55	-130.280	-140.180	-150.080	-155.040	-159.990	-164.940	-169.890	-179.800	-189.700	-196.630	
428.498	7919.460	407	2425.07	-129.280	-139.030	-148.790	-153.670	-158.550	-163.430	-168.300	-178.060	-187.820	-194.550	
427.559	7919.386	408	2381.09	-126.660	-136.170	-145.690	-150.450	-155.210	-159.960	-164.720	-174.240	-183.750	-190.420	
426.670	7919.420	409	2283.54	-122.660	-131.720	-140.780	-145.310	-149.840	-154.370	-158.900	-167.960	-177.010	-183.360	
429.809	7918.457	410	2254.91	-133.280	-142.050	-150.820	-155.200	-159.590	-163.970	-168.360	-177.130	-185.900	-192.040	
428.687	7918.512	411	2194.49	-132.620	-141.170	-149.730	-154.010	-158.290	-162.570	-166.840	-175.400	-183.960	-189.950	
427.821	7918.509	412	2151.52	-130.430	-138.870	-147.310	-151.530	-155.750	-159.970	-164.190	-172.630	-181.070	-186.980	
427.859	7917.688	413	2393.60	-128.030	-137.690	-147.340	-152.170	-156.990	-161.820	-166.640	-176.300	-185.950	-192.710	
427.043	7918.295	414	2378.57	-122.940	-132.460	-141.990	-146.750	-151.510	-156.270	-161.030	-170.550	-180.070	-186.740	
426.036	7918.563	415	2326.41	-118.980	-128.280	-137.570	-142.220	-146.860	-151.510	-156.160	-165.450	-174.740	-181.250	
427.332	7916.722	416	2410.58	-124.930	-134.670	-144.400	-149.270	-154.130	-159.000	-163.870	-173.600	-183.340	-190.150	
426.326	7917.242	417	2326.36	-118.850	-128.240	-137.620	-142.310	-147.010	-151.700	-156.390	-165.780	-175.160	-181.730	
424.102	7916.750	418	2231.24	-116.090	-125.090	-134.090	-138.590	-143.090	-147.590	-152.090	-161.090	-170.090	-176.390	
423.156	7916.963	419	2174.63	-114.090	-122.840	-131.590	-135.970	-140.340	-144.720	-149.090	-157.840	-166.590	-172.720	
424.239	7913.312	420	2321.90	-117.140	-126.460	-135.780	-140.430	-145.090	-149.750	-154.410	-163.720	-173.040	-179.560	
423.172	7912.864	421	2257.90	-115.990	-125.070	-134.150	-138.690	-143.230	-147.770	-152.310	-161.400	-170.480	-176.830	
424.108	7919.040	422	1971.06	-116.140	-123.840	-131.540	-135.390	-139.240	-143.090	-146.940	-154.640	-162.340	-167.730	
425.179	7919.532	423	2009.98	-118.120	-125.980	-133.800	-137.720	-141.640	-145.560	-149.480	-157.320	-165.160	-170.650	
429.214	7920.983	424	2485.17	-131.150	-141.130	-151.110	-156.100	-161.090	-166.080	-171.070	-181.050	-191.030	-198.020	
428.193	7920.952	425	2420.76	-128.620	-138.380	-148.140	-153.020	-157.900	-162.780	-167.660	-177.410	-187.170	-194.000	
427.107	7920.887	426	2382.62	-125.260	-134.870	-144.470	-149.280	-154.080	-158.890	-163.690	-173.300	-182.910	-189.640	
426.095	7920.705	427	2363.05	-119.830	-129.340	-138.850	-143.610	-148.370	-153.120	-157.880	-167.390	-176.900	-183.560	
425.138	7920.599	428	2310.15	-117.760	-127.030	-136.310	-140.950	-145.590	-150.230	-154.870	-164.140	-173.420	-179.920	
424.180	7920.254	429	2251.61	-115.890	-124.970	-134.040	-138.580	-143.120	-147.660	-152.200	-161.270	-170.350	-176.710	
423.282	7918.792	430	2199.15	-114.210	-123.070	-131.940	-136.380	-140.810	-145.250	-149.680	-158.550	-167.420	-173.630	
426.749	7918.832	431	2074.46	-121.430	-129.480	-137.480	-141.490	-145.500	-149.510	-153.520	-161.540	-169.570	-175.180	



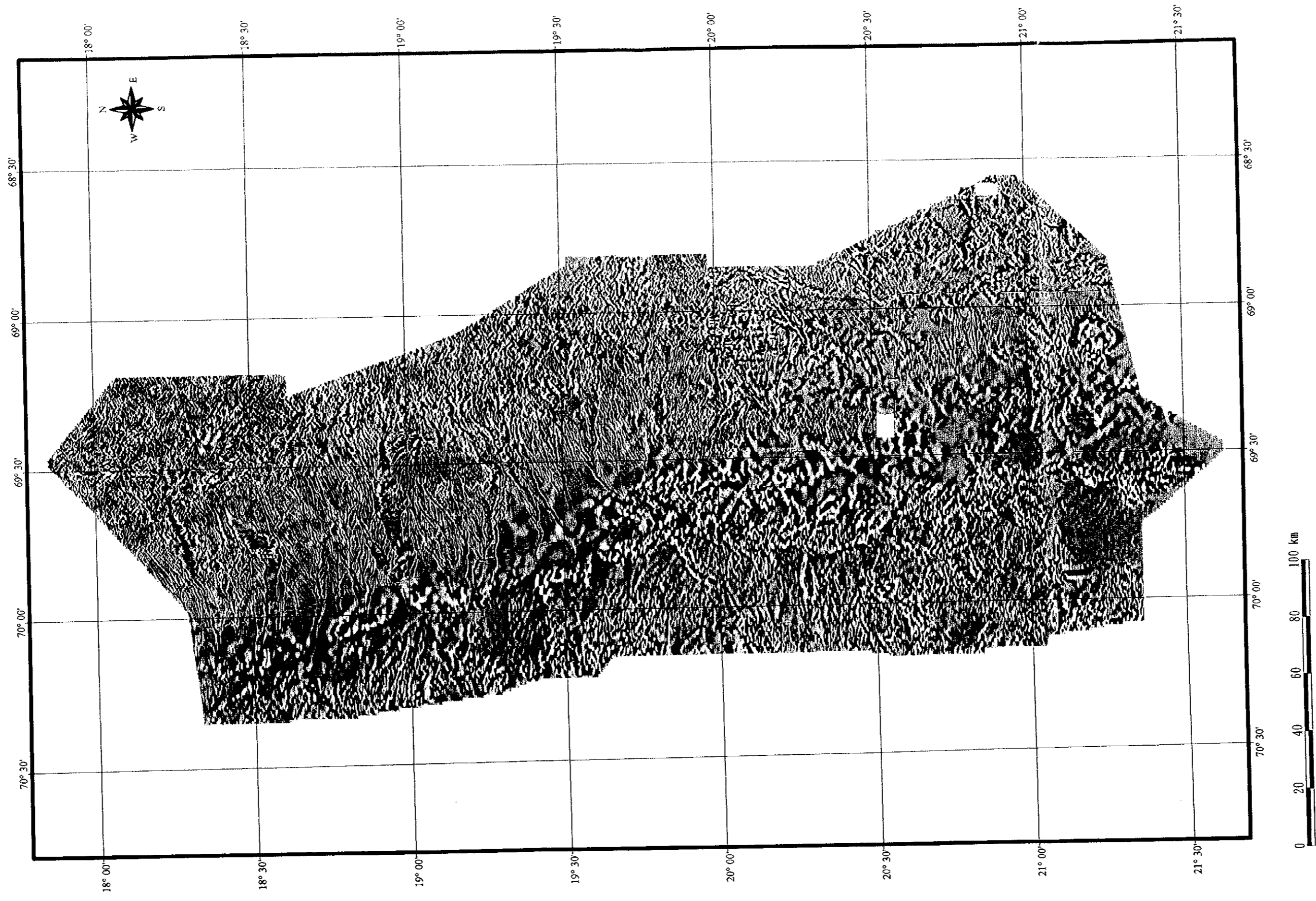


Mag North
 Grid North
 True North

Magnetic Model: IGRF 1995
 Longitude: 68° 27' 35" W
 Latitude: 19° 00' 00" S
 Height: 0.0 mtr
 Year: 2000
 Year Epoch: 2000.0
 Declination: 2° 28' 15.04" W
 Inclination: 66° 43' 22.86" N
 Magnetic Anomaly: -0° 17' 55" W
 Grid Convergence: -0° 17' 55" W
 Secular Variation: -0° 42' 04" per year



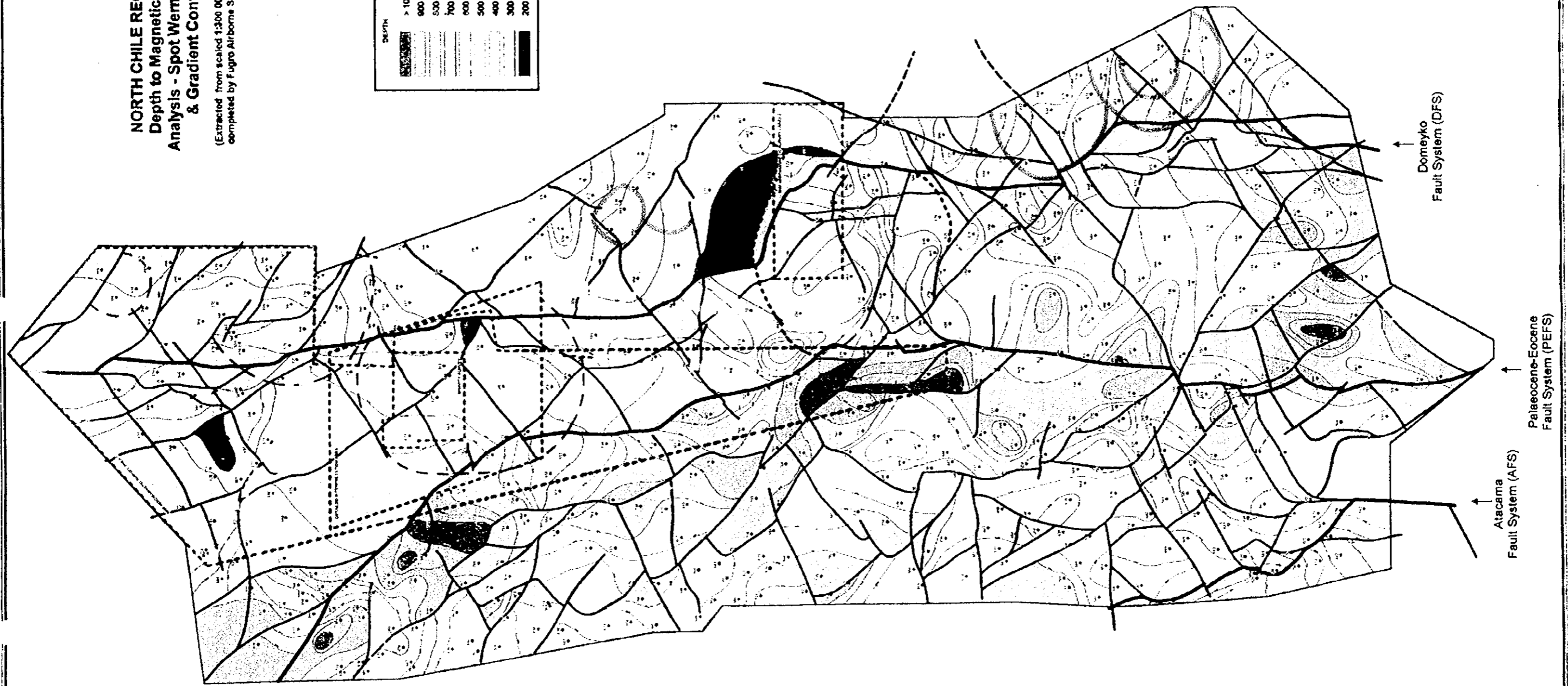
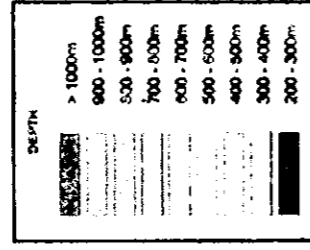
AP-13 Total Magnetic Intensity (Reduced to the Pole)



AP-14 First Vertical Derivative of Total Magnetic Intensity

**NORTH CHILE REGION 1:
Depth to Magnetic Source
Analysis - Spot Werner Depths
& Gradient Contours**

(Extracted from scaled 1:300 000 interpretation
completed by Fugro Airborne Surveys - Map 5)



Domeyko
Fault System (DFS)

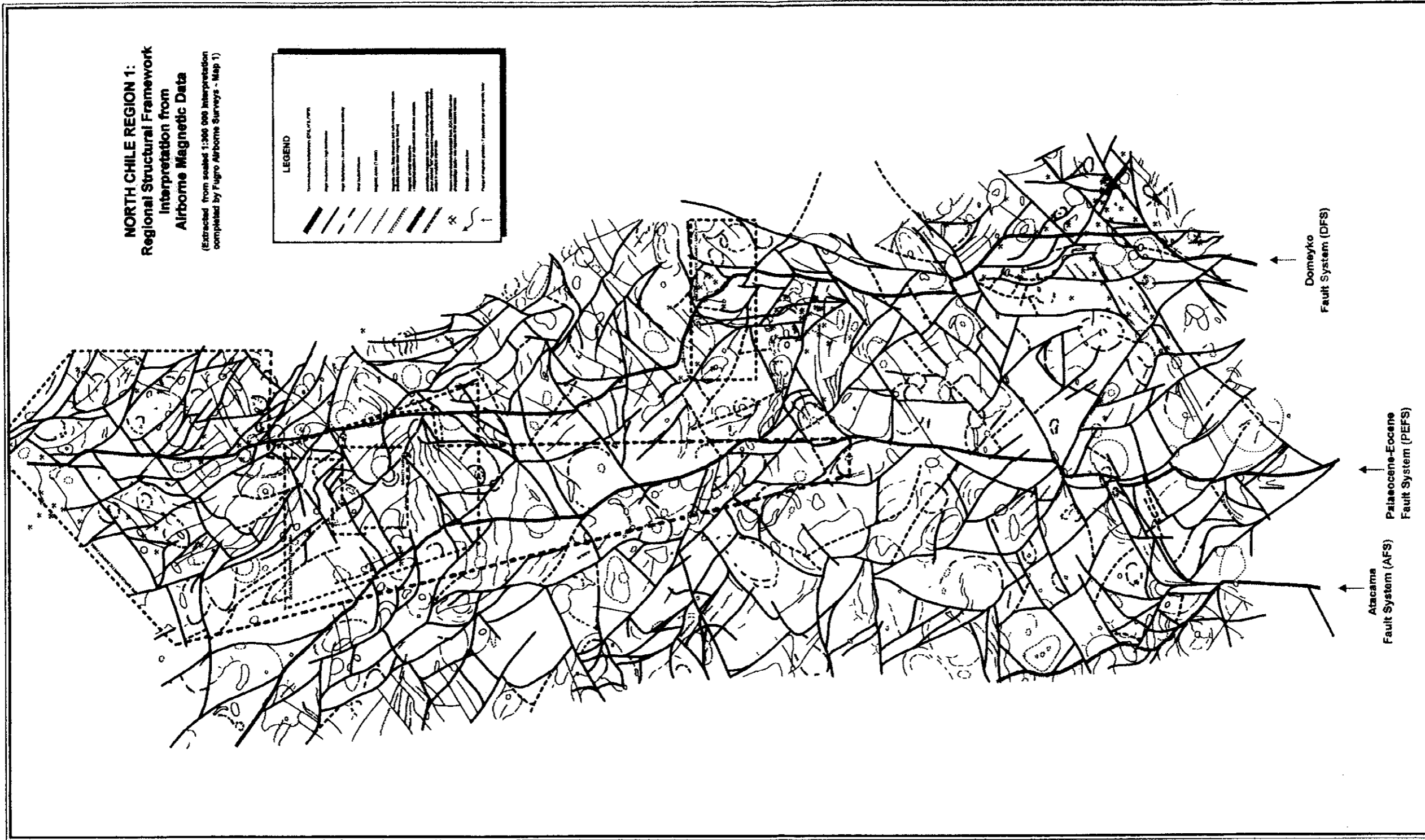
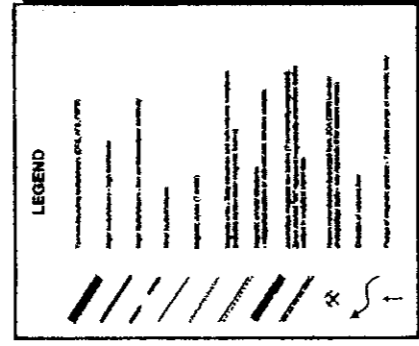
Atacama
Fault System (AFS)

Palaeocene-Eocene
Fault System (PEFS)

AP-15 Depth to the Magnetic Source

**NORTH CHILE REGION 1:
Regional Structural Framework
Interpretation from
Airborne Magnetic Data**

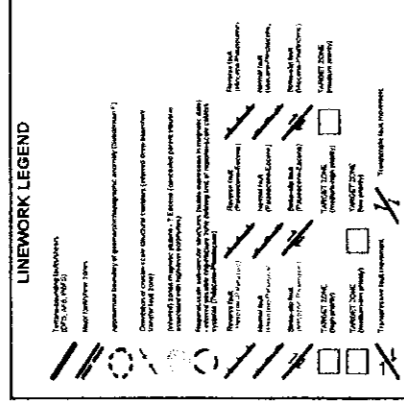
(Extracted from scaled 1:500 000 Interpretation
completed by Fugro Airborne Surveys - Map 1)



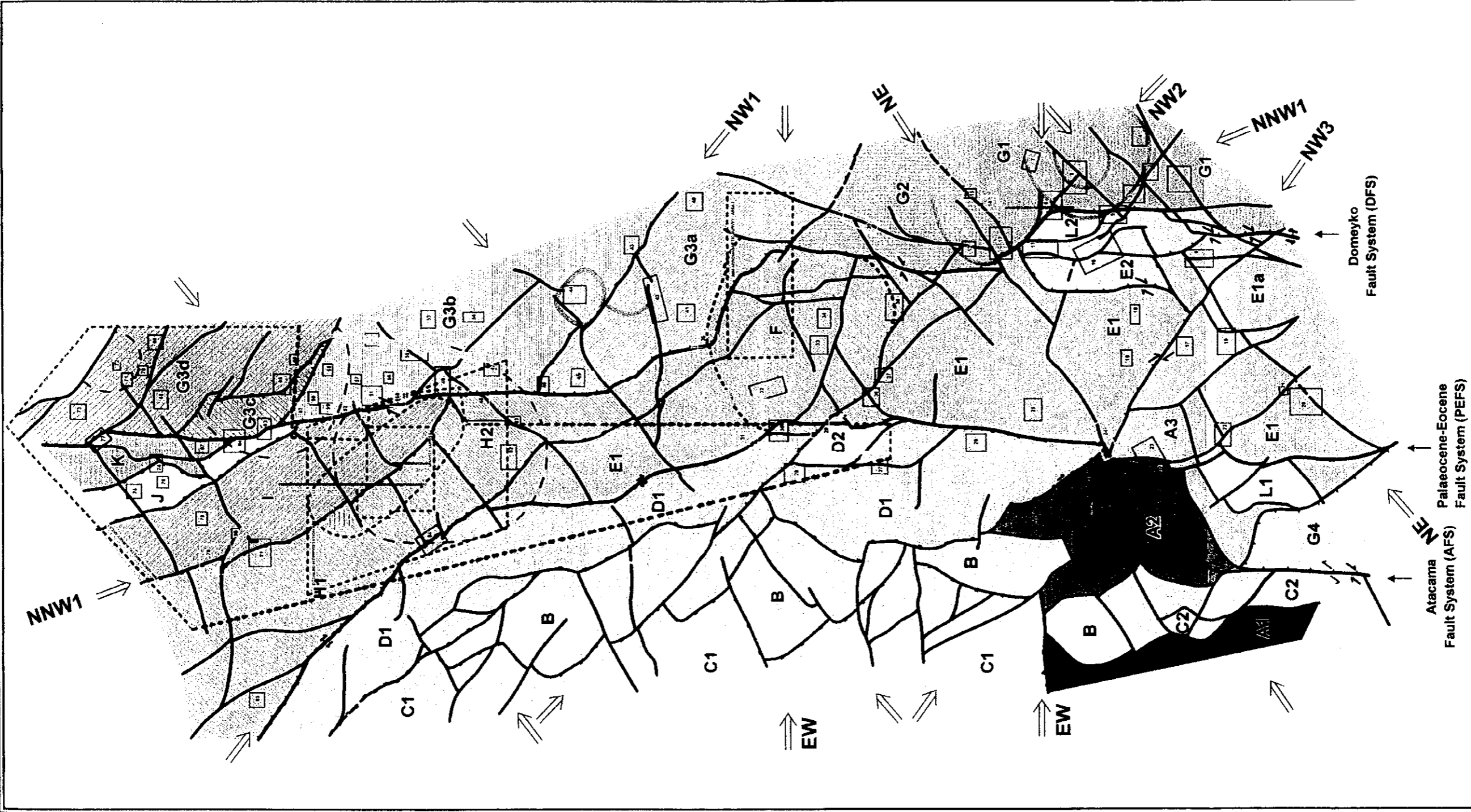
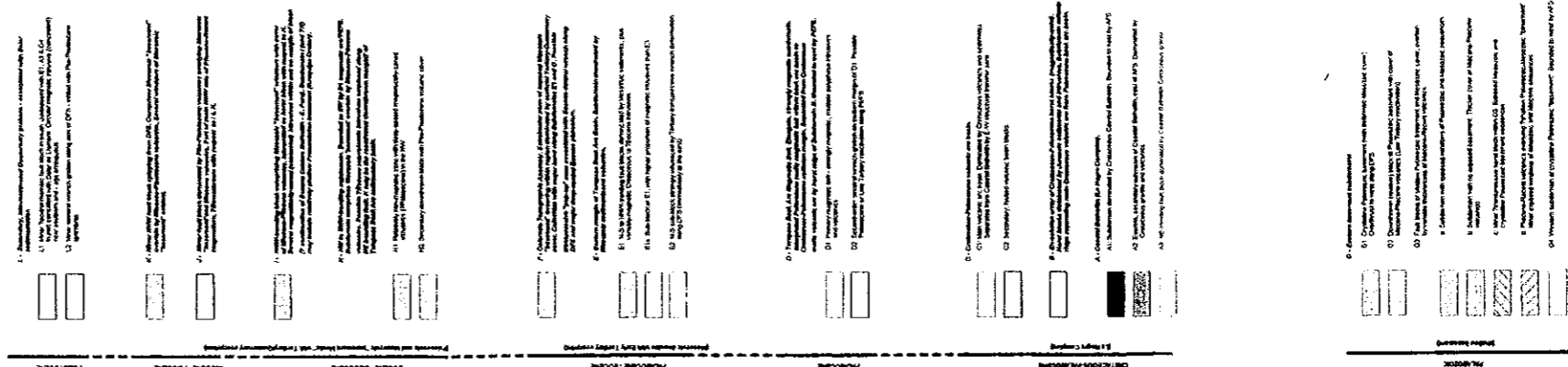
AP-16 Regional Structural Framework

**NORTH CHILE REGION 1:
Principle Tectonic Elements
&
Exploration Target Zones**

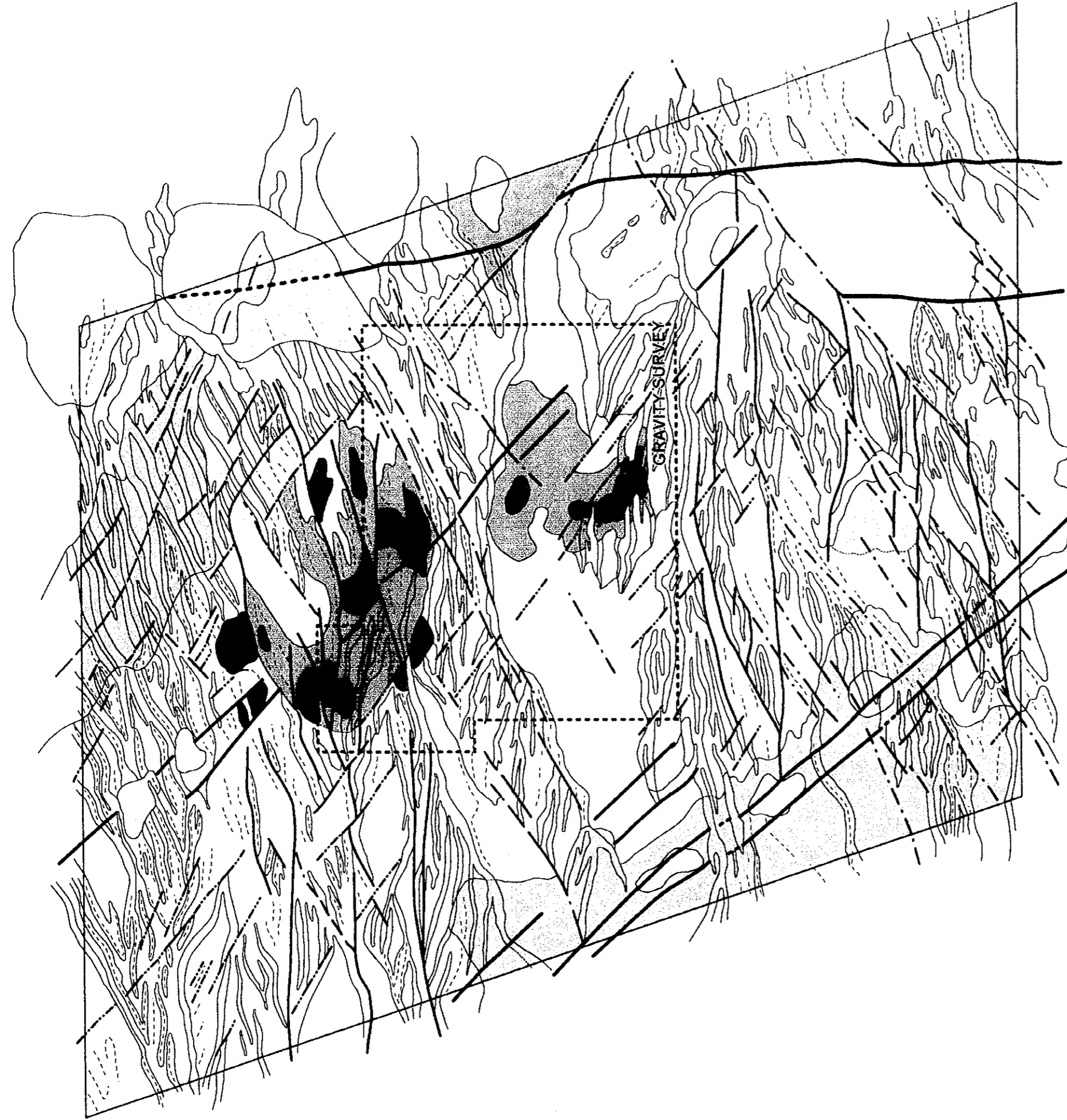
(Extracted from scaled 1:300 000 Interpretation
completed by Fugro Airborne Surveys - Map 2)



SUBDOMAIN LEGEND



AP-17 Principle tectonic Elements & Exploration Target Zones



**NORTH CHILE REGION 1:
Target Priorities for
Detailed Solid Geology
Interpretation**

(Extracted from 1:100 000 Target Priority
Interpretation completed by
Fugro Airborne Surveys - Map 4)

