

2. Of the forest product seized in violation of sub-article(1) of this Article is perishable, the Ministry or the appropriate regional body shall sell the said forest product at the prevailing market price and keep money until court ruling is obtained.

13. Prohibited Activities

1. No person shall:
 - a) Utilize or harvest *Hagenia abyssinica*, *Cordia Africana*, *Podocarpus gracillior* and *Juniperus Procera* from state or regional forest and
 - b) Cut any tree, utilize the products thereof or perform other activities in protected forest.
2. Without prejudice to sub-article forest(1) of this Article no person within a state forest and regional forest unless in possession of written permit from the Ministry or appropriate regional body, shall:
 - a) Cut any trees;
 - b) Settle temporality or permanently;
 - c) Graze domestic animals;
 - d) Carry out hunting activity; and
 - e) Keep bee-hives or extract honey
3. No person shall, unless in possession of a written permit from the Ministry or the appropriate regional body, take any forest product from or carry out an activity that may be harmful to natural resources state forest, protected forest, and regional forests.
4. Prior consultation and approval is required form the Ministry of the appropriate regional body in order to conduct large scale farming, mining operation construction or roads, water drilling, irrigation and or works and other similar activities, or to give license for such operation with in state or regional forests.

14. Forest Guards and Inspection on Movement of Forest Products

1. State and regional forest guards shall, in accordance with directives issued to them by the Ministry or the appropriate regional body protect forests against acts committed in violation of Articles 8(1), 9 and 13 of this proclamation.

2. In accordance with directives to be issued by the Ministry or the appropriate regional body, inspectors who monitor the mobility of forest products shall have the following powers and duties:
 1. With respect to forest products specifies in sub article (1) of Article (13) of this proclamation.
 - a) inspect any means of transport carrying forest products;
 - b) require any person who transports, processes or possesses forest products to produce certificate of origin of destination or legal document;
 2. Seize any forest products transported, or stored in violation of sub-article 1 of Article 12 of this proclamation; and
 3. Forest guards and inspectors who monitor the mobility or movement of forest products shall, while on duty, wear uniforms and carry identity card as shall be determined by the Ministry or the appropriate regional body.

15. Duty to Cooperate

1. Any person shall have the duty to cooperate with the Ministry or the appropriate regional body in the implementation of this proclamation, regulations and directives issued in accordance with this proclamation.

16. Penalty

1. cuts trees, takes, processes or in any other manner use forest products, accept pursuant to this proclamation and regulation and directives issued in accordance with this proclamation.
2. destroys, damages or falsifies forests boundary marks:
3. causes damages to forests by setting fire or in any other manner; or
4. Violates Article 13 of the proclamation, shall unless the penal code prescribes a graver penalty, be punishable with imprisonment not exceeding two years or with fine not exceeding Birr 5000 or with both.

17. Repeals and Savings

1. The following laws are hereby repealed;

- a) forest and Wildlife Conservation and Development proclamation No. 192/1980 with respect to provision of forestry;
 - b) Protection of State Forest Regulations No 344/1968
 - c) Exploitation of State Forest Regulations No 345/1968
 - d) Management of Protective forest Regulations No. 347/1968
 - e) Power of Rangers Regulations No 349/1968
 - f) Power of forest Guards Regulation No. 350/1968
2. Trade of Saw Logs and Veneer Longs Regulations No 351/1968 shall be deemed to have been issued under this proclamation and shall continued in force.

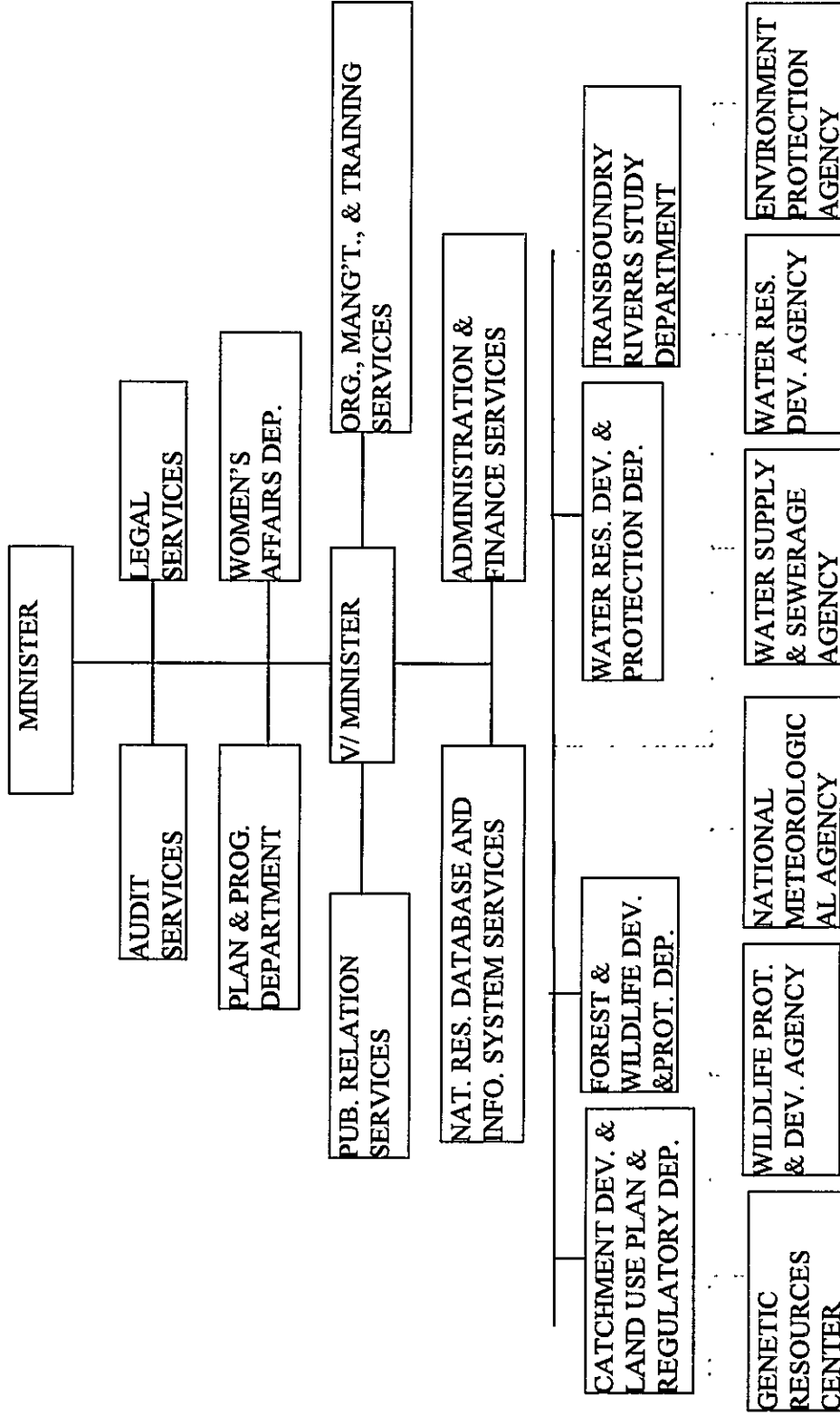
18. Effective Date

This proclamation shall enter into force on the date of its publication in the Negarit Gazetta.

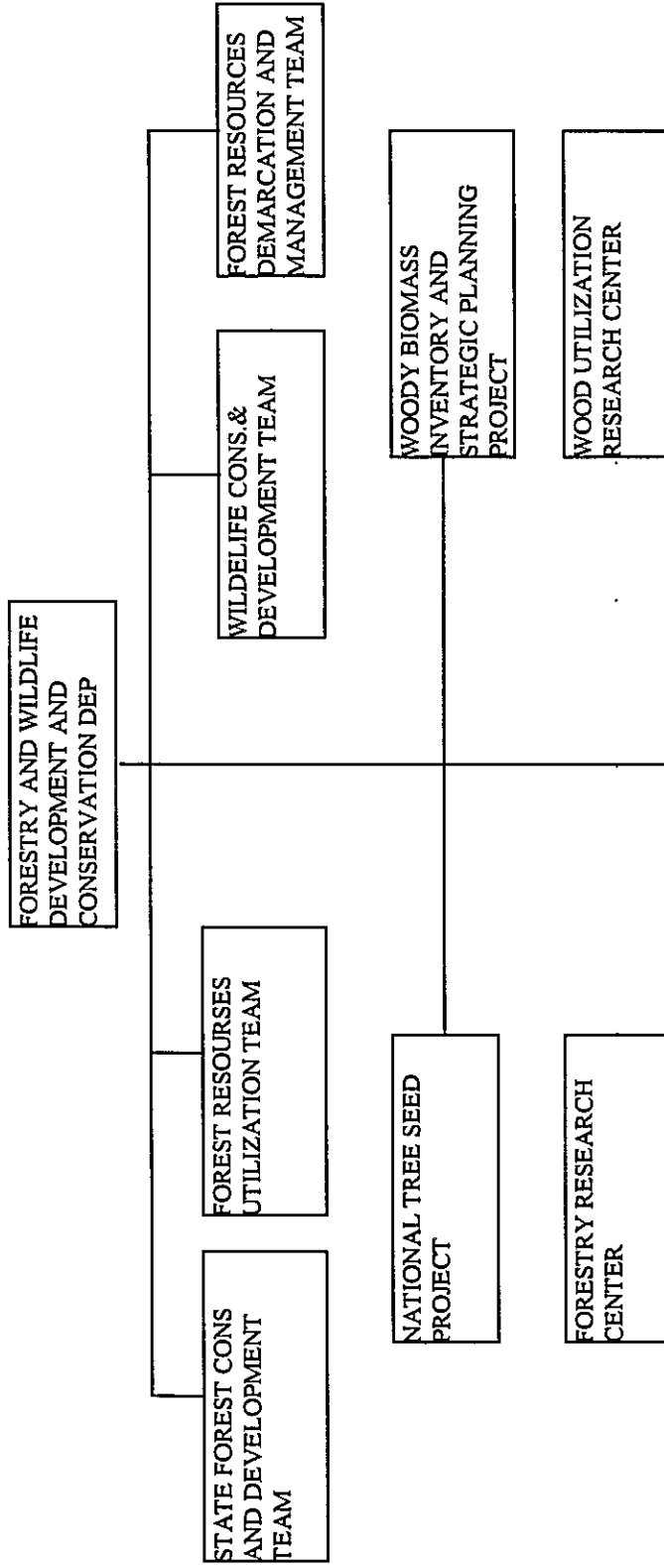
Done at Addis Ababa this 28th day of March 1994.

**MELES ZENAWI
PRESIDENT OF THE TRANSITIONAL
GOVERNMENT OF ETHIOPIA**

ORGANIZATIONAL STRUCTURE ANNEX 7-1
MINISTRY OF NATURAL RESOURCES DEVELOPMENT AND ENVIRONMENTAL PROTECTION

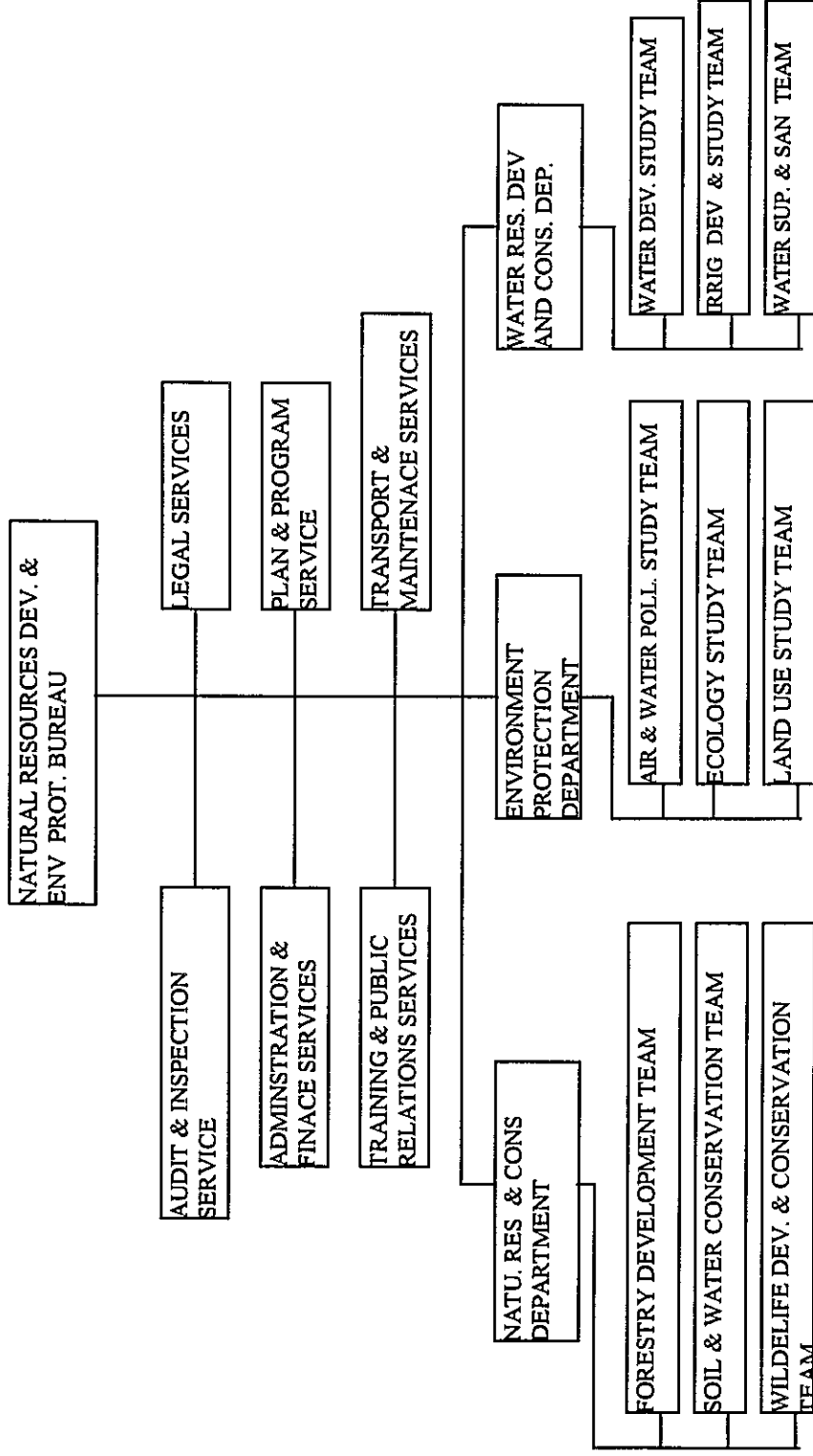


ANNEX 7-2



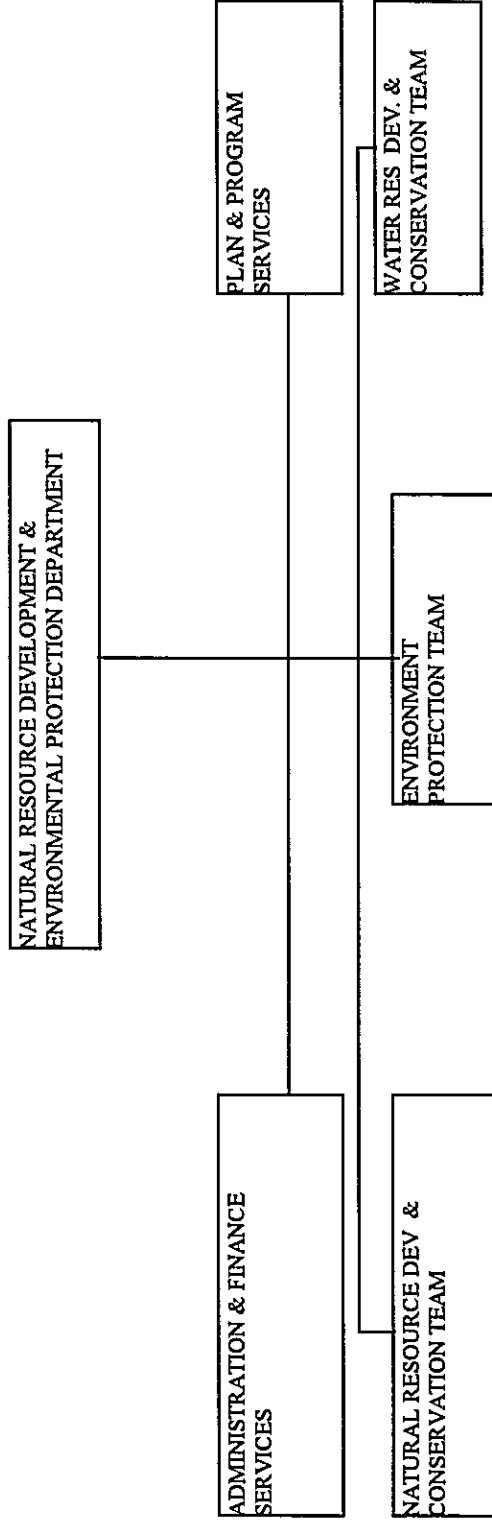
ANNEX 7-3

REGIONAL NRDEP BUREAU



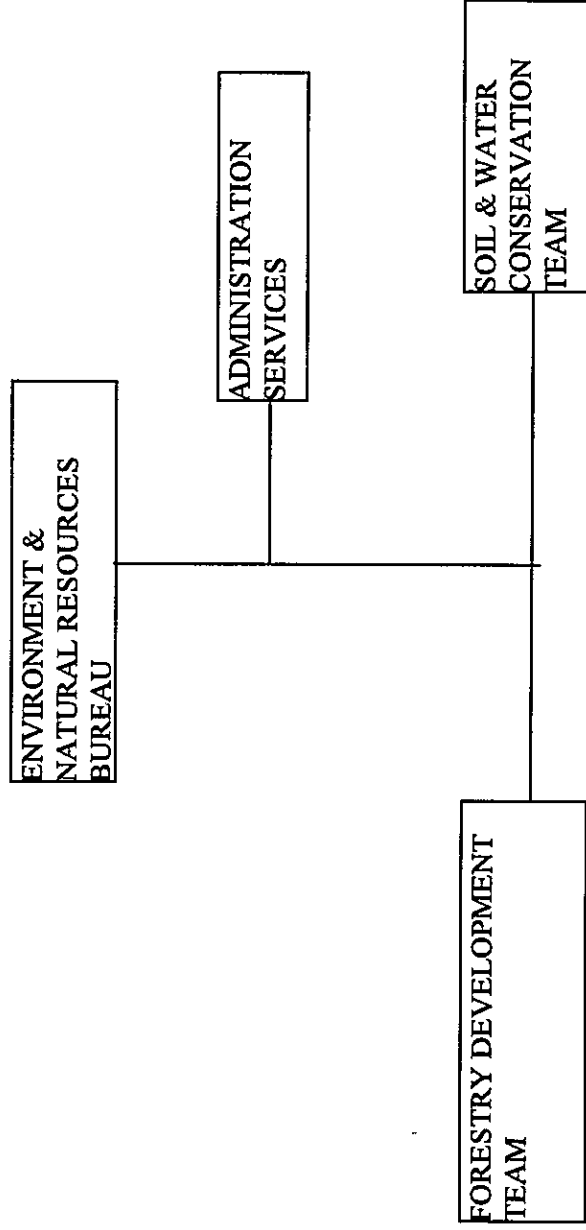
ANNEX 7-4

ZONAL NRDEP DEPARTMENT



ANNEX 7-5

DISTRICT NRDEP BUREAU



LIST OF ABBREVIATIONS

NGO'S

ADF	=	African Development Bank
ASE	=	Agri-Service Ethiopia
BHE	=	Babtist Mission of Ethiopia
CARE	=	Care International Ethiopia
CIDA	=	Canadian International Development Agency
CPAR	=	Canadian Physicians for Aid and Relief
CRDA	=	Christian relief and Development Association
CRS	=	Catholic Relief Service
DANIDA	=	Danish international Development Agency
EEC	=	European Economic Commission
EECMY	=	Ethiopian Evangelical Church Mekane Yesus
EOC/DICAD	=	Ethiopian Orthodox Church Development Inter church Aid Department
ERCS	=	Ethiopian Red Cross Society
FCIM	=	Feed the Children International Missionaries
FFHC/AD	=	Freedom from Hunger Campaign/Action Development
FHI	=	Food for the Hungry International
FINNIDA	=	Finnish International Development agency
FRG/GTZ	=	Federal Republic of Germany's Technical Cooperation Agency
GAA	=	German Agro Action
GOE	=	Government of Ethiopia
IFAD	=	International Fund for Agriculture Development
JRC	=	Jesuit Relief Service
JIVC	=	Japan International Volunteer Center
KHCDP	=	Kale Heywot Church Development Program
LVIA	=	Lay Volunteers International Association
MFM	=	Menschen für Menschen
NCA	=	Norwegian Church Aid
NSTC	=	Norwegian Save the Children
OXFAM	=	Oxford Committee for Famine Relief
SELF HELP	=	Self Help Third World Development
SIDA	=	Swedish International Development Agency
SIM	=	Society of International Missionaries
SPCM	=	Swedish Philadelphia Church Mission
24-HOUR TV	=	24 Hour TV Charity Committee
WB	=	World Bank
WFP	=	World Food Program
WV	=	World Vision

Other Abbreviations (inorder of appearance in the text)

FAO	=	Food and Agriculture Organization
IUCN	=	International Union for Conservation of Natural and Natural Resources
UNCED	=	United Nation Conference on Environment and velopment
EFAP	=	Ethiopian Forestry Action Plan
TGE	=	Transitional Government of Ethiopia
SFCDD	=	State Forest Conservation and Development Department
MONRDEP	=	Ministry of Natural Resources Development and vironment Protection

LIST OF REFERENCES

1. Dr. Ermias Bekele, Inventory of Forest Projects in Ethiopia
1989 Addis Ababa
2. EFAP Secretariat, Ethiopia Forest Action Program, Final Report, Addis Ababa, 1994
Vol. I Executive Summary
Vol. II The Challenge for Development
Vol.III Issues and actions
3. NCS Secretariat, National Conservation Strategy
Vol. I- Vol. V 1994, Addis Ababa
4. National Preparatory Committee, National Report on Environment and Development,
1992, Addis Ababa
5. NCS Secretariat, National Conservation Strategy, Phase I Report , 1990
6. Gedion Asfaw, The Process of Resource Planning Based on the Ethiopian National
Conservation Strategy, Paper presented at the 18th Session of the IUCN General
Assembly, 1990, Perth, Australia.

ANNEXES ----- LIVESTOCK

Annex 1

Ethiopia: Livestock Population

Species	Total Population ('000 head, '87)	Percentage in Highlands	Percentage Growth of populations	
			1961-74	1975-87
Cattle	30000	72	0.6	1.2
Sheep	23000	74-75	0.2	0.1
Goats	17000	28-40	0.1	
Equine	7015	80	0.6	0.3
Camels	56000	0	0.5	0.8
Poultry	56000	>70	2.1	0.9
Total (TLU)		>70	0.5	1.6

Source Addis Anteneh (1992) Ethiopia Livestock Development Strategy

Annex II

The Main Function of Livestock in Ethiopia

Class	Products	Input to arable cropping	Other roles
Cattle	meat milk, hides	traction, transport, manure	fuel, cash
Sheep/Goats	skin, hair, wool, mutton	Little or none	cash
Camels	milk, meat, skin	transport, traction(limited	-
Equine	-	transport, traction	-
Poultry	eggs, meat	(limited)	cash

Annex III

Estimate annual output of livestock in Ethiopia

	Unit	1979-81	1989	Annual rate of growth (%)
MILK TOTAL (a)	'000 t	742	784	0.7
Cattle milk		620	624	0.7
Sheep milk		58	65	1.5
Goat milk		94	95	0.2
MEAT TOTAL (a)	'000 t	421	459	1.1
Beef and veal		214	237	1.3
Mutton		82	82	0.0
Goats meat		56	66	2.1
Poultry meat		68	73	0.9
Pork		1	1	0.0
HIDES AND SKINS TOTAL (b)	'000 pcs	16020	16780	0.6
Bovine hides	'000 pcs	1820	2020	1.3
Sheep skins		7670	7920	0.4
Goat skins		6530	6840	0.6
Hen egg (a)		73	79	1.0
Honey (c)	'000 t	14	15.6	1.4
Bees -wax				

Source:

(a) - FAO production yearbook, 1989.

(b) - Estimated by the Task Force, based on offtake rates of 7% for cattle, 33% for sheep and 28% for goats.

(c) - ONCCP, Agricultural Development, 1990 (unpublished).

Annex IV

YIELDS OF FIRST LOCATION CROSS-BRED COWS

Sire Breed	Number	305 Day Yield (kg)	Butterfat %
Friesian	71	1944	5.16
Jersey	83	1697	5.98
Simmental	67	1845	5.07
Dam Breed			
Barka	53	1998	5.22
Boran	116	1854	5.41
Horo	52	1672	5.52

Source: IAR Forage and Range Progress Report 1980/81.

LOCAL AND CROSS-BRED DAIRY COWS YIELDS (305 DAY MAX.)

Type	Numbers	Milk (kg)	Fat %
Arsi	189	241	5.7
Fogera	13	752	5.5
Barka	4	995	4.8
Boran	17	83	5.3
Friesian and Arsi	10	1435	4.4
Jersey and Arsi	16	1153	4.9
Friesian and Boran	33	1990	4.6

Source: CADU.

Annex V

Feed Resources Available to Livestock in Ethiopia

Feed Source	HIGH LAND			LOW LAND			TOTAL	
	Area ha ('000)	Available tDM/ha.	Total DM ('000)	Area ha ('000)	Available tDM/ha	Total DM ('000)	Area ('000)	Total ('000 tDM)
Nature Pasture	22300	1.5	33450	43200	(0.56)	24192	65550	57642.0
Crop residues	5422		6930.7				5422	6930.7
Cereal	4688	1.4	6563.2				4688	6563.2
Pulses	735	0.5	367.5				735	367.5
Stubble grazing	4688	0.4	1875.2				4688	1875.2
Industrial by products			198.0					198.8
			42453.9			24192		6645.9

Source: Mesfin Alemu et al (1991)

Annex VI

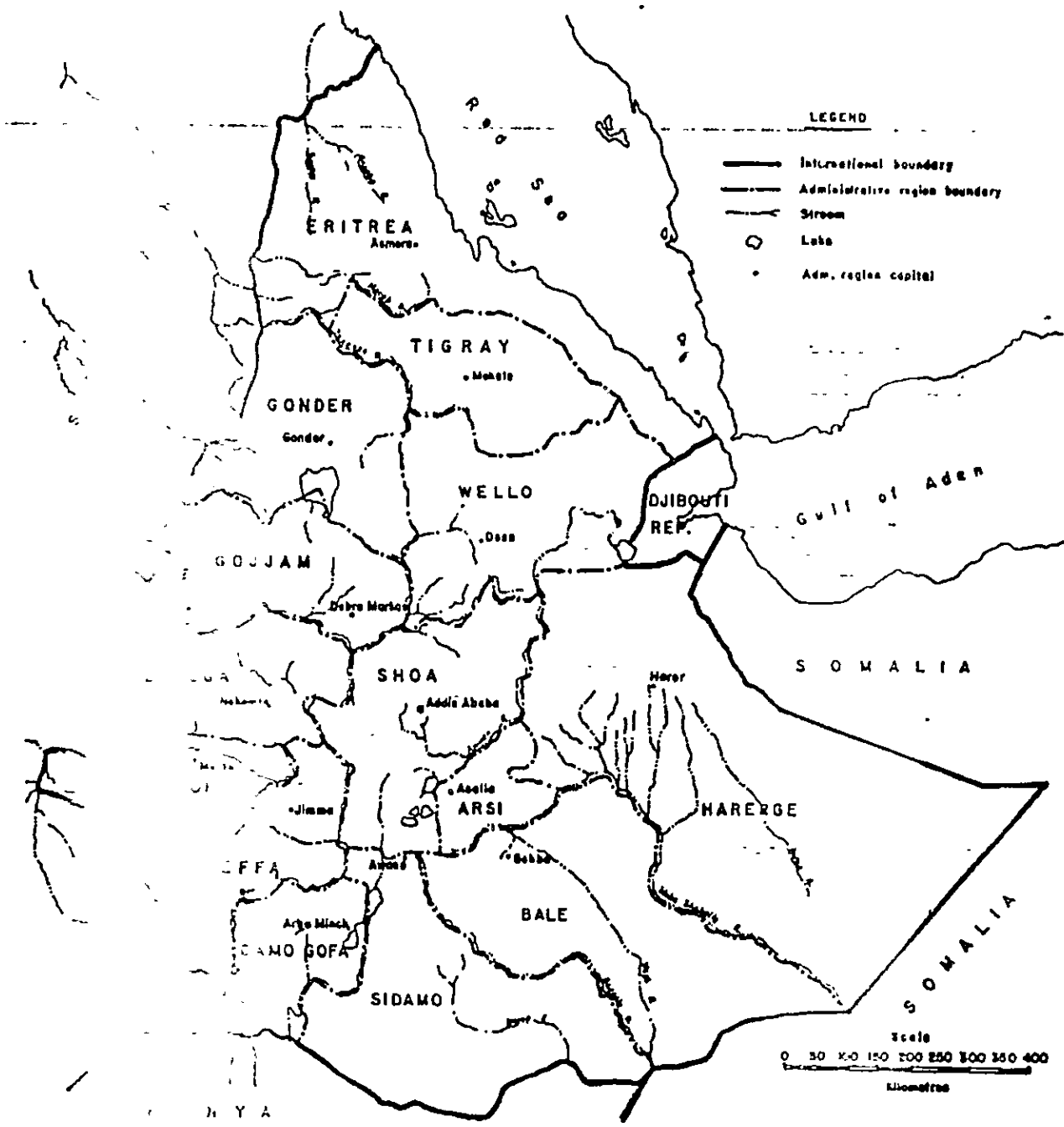
Feed Availability to Livestock in Ethiopia in Fodder Units

Feed Source	HIGH LAND			LOW LAND			TOTAL	
	Total DM Conversion	Total FU ('000t)	FU/kg DM (millions)	Total DM Conversion	Total FU ('000t)	FU/kg DM (millions)	Total DM ('000)	Total FU (Millions)
Nature Pasture	33450.0	0.75	25087.5	24192.0	0.36	8709.1	57642	33796.6
Crop residues	6930.7		3137.2				6930.7	3137.2
Cereal	6563.2	0.45	2953.4				6563.2	2953.4
Pulses	367.5	0.50	183.8				367.5	183.8
Stubble grazing	1875.2	0.50	937.7				1875.2	937.6
Industrial by products	198.0	0.67	132.7					132.7
	42453.9		29295.0			8709.1		38004.1

Source: Mesfin Alemu et al (1991)

Map 1

ETHIOPIA: ADMINISTRATIVE REGIONS UNTIL 1987



ETHIOPIA - UNCED NATIONAL REPORT: RESOURCE BASE

