

SCALE - 1:500
CONTOUR INTERVAL 1m

REFERENCE:

- BS - Bottom of Bank
- B(P) - Building (Permanent)
- BL - Bottom Level
- EP - Electric Post
- FL - Floor Level
- G - Gate
- IF - Iron Fence
- IR - Iron Rail
- MH - Manhole
- MHT - Manhole Telecom
- OFL - Overflow Level
- OL - Outlet
- OLL - Outlet Level
- P - Building (Permanent)
- RE - Road Edge
- RTL - Roof Top Level
- S-HUT - Security Hut
- TB - Top of Bank
- V - Valve
- VC - Valve Chamber
- VO - Ventilator Opening
- W - Wall
- WF - Wire Fence
- WL - Water Level
- WT - Water Tank

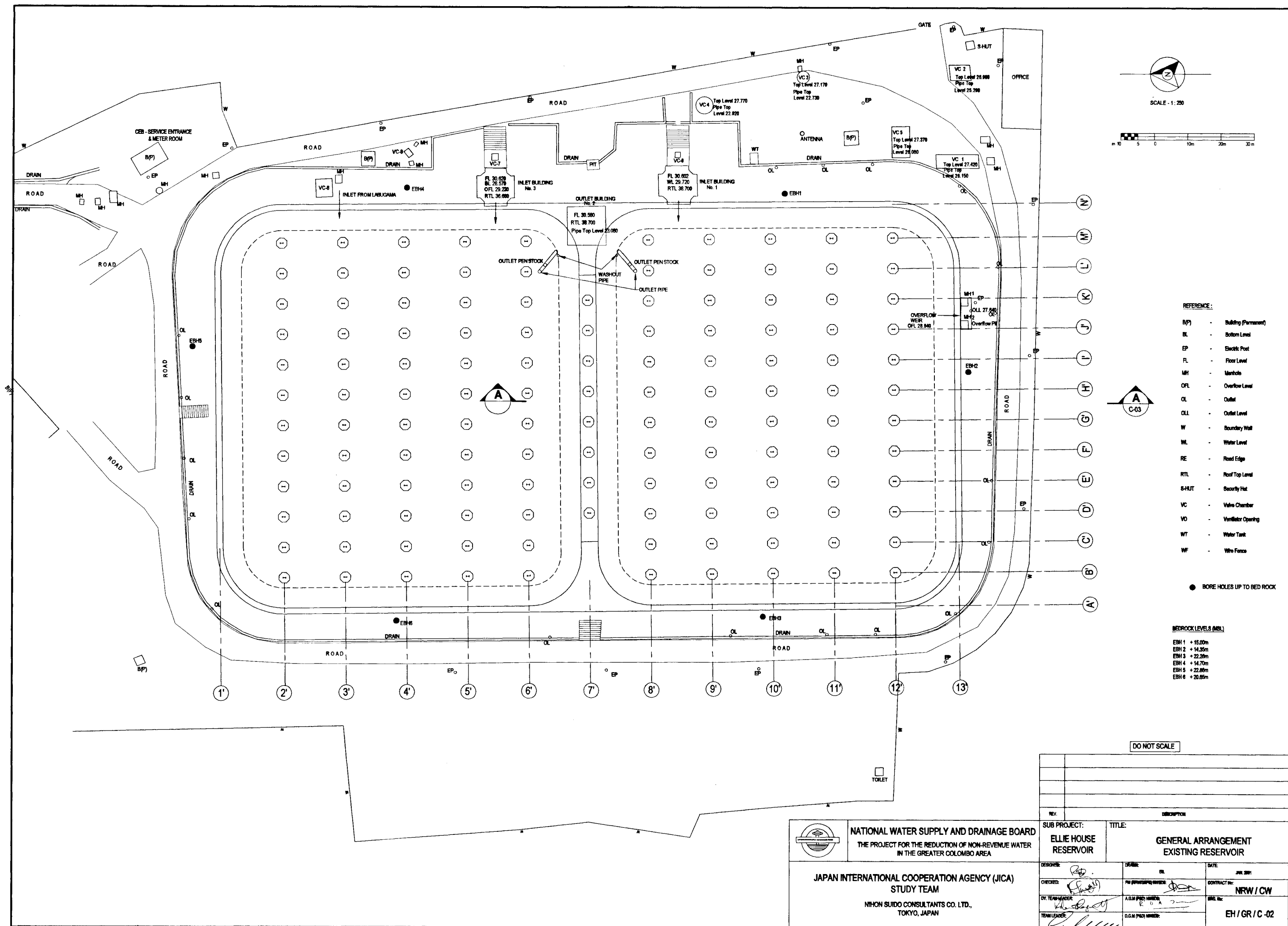
DO NOT SCALE

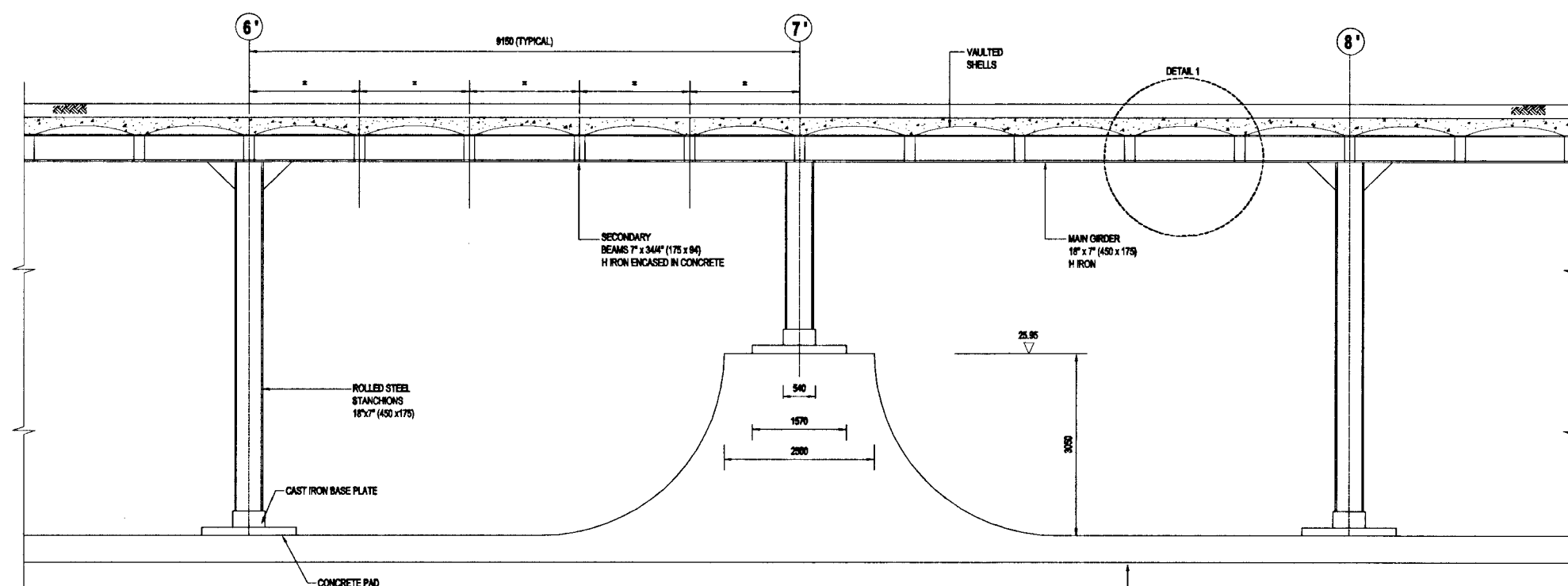
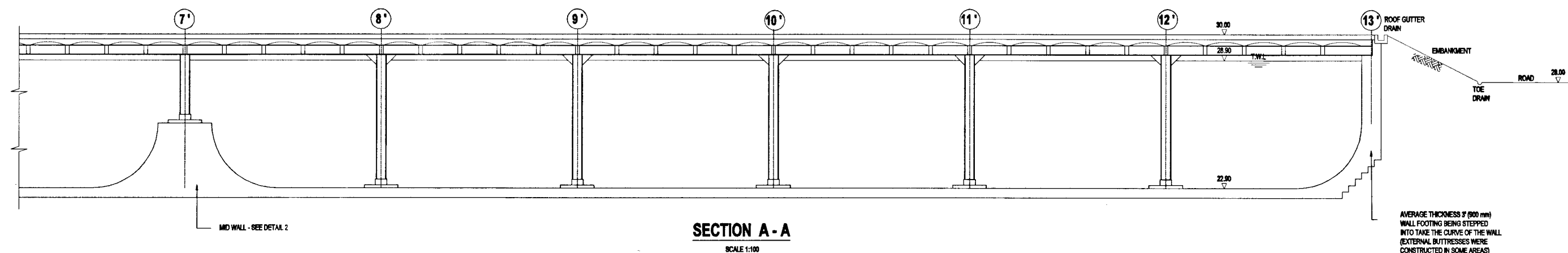


NATIONAL WATER SUPPLY AND DRAINAGE BOARD
THE PROJECT FOR THE REDUCTION OF NON-REVENUE WATER
IN THE GREATER COLOMBO AREA

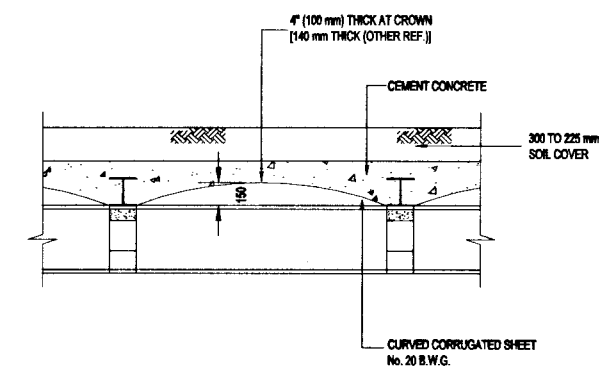
JAPAN INTERNATIONAL COOPERATION AGENCY (JICA)
STUDY TEAM
NIHON SUDO CONSULTANTS CO. LTD.,
TOKYO, JAPAN

SUB PROJECT:		TITLE:	
ELLIE HOUSE RESERVOIR		SITE SURVEY PLAN	
DESIGNED:	DR/AN:	DATE:	JUN 2001
CHECKED:	IN (PROVISED) NUMBER:	PROJECT NO.:	NRW / CW
BY TEAM LEADER:	A.G.M (PRO) NUMBER:	DRG. No.:	EH / GR / C-01
TEAM LEADER:	D.O.M (PRO) NUMBER:		





MID WALL DETAIL - 2
SCALE 1:50



ROOF DETAIL 1
SCALE 1:25

DO NOT SCALE

REFERENCES

1. "COLOMBO WATER WORKS," TRANSACTION OF THE ENGINEERING ASSOCIATION OF CEYLON 1907, PAPER No. 7 BY TAR MACADAM
2. "THE HISTORY OF COLOMBO WATER WORKS" TRANSACTION OF THE ENGINEERING ASSOCIATION OF CEYLON 1931, BY W.M. THYNE
3. NWSDB DWGS CONTRACT 7/3 1984, ELLIE HOUSE RESERVOIR REHABILITATION WORKS.

NOTES

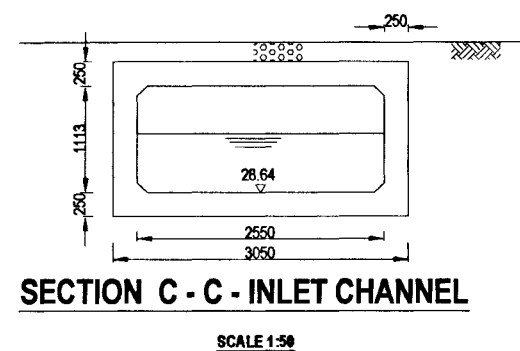
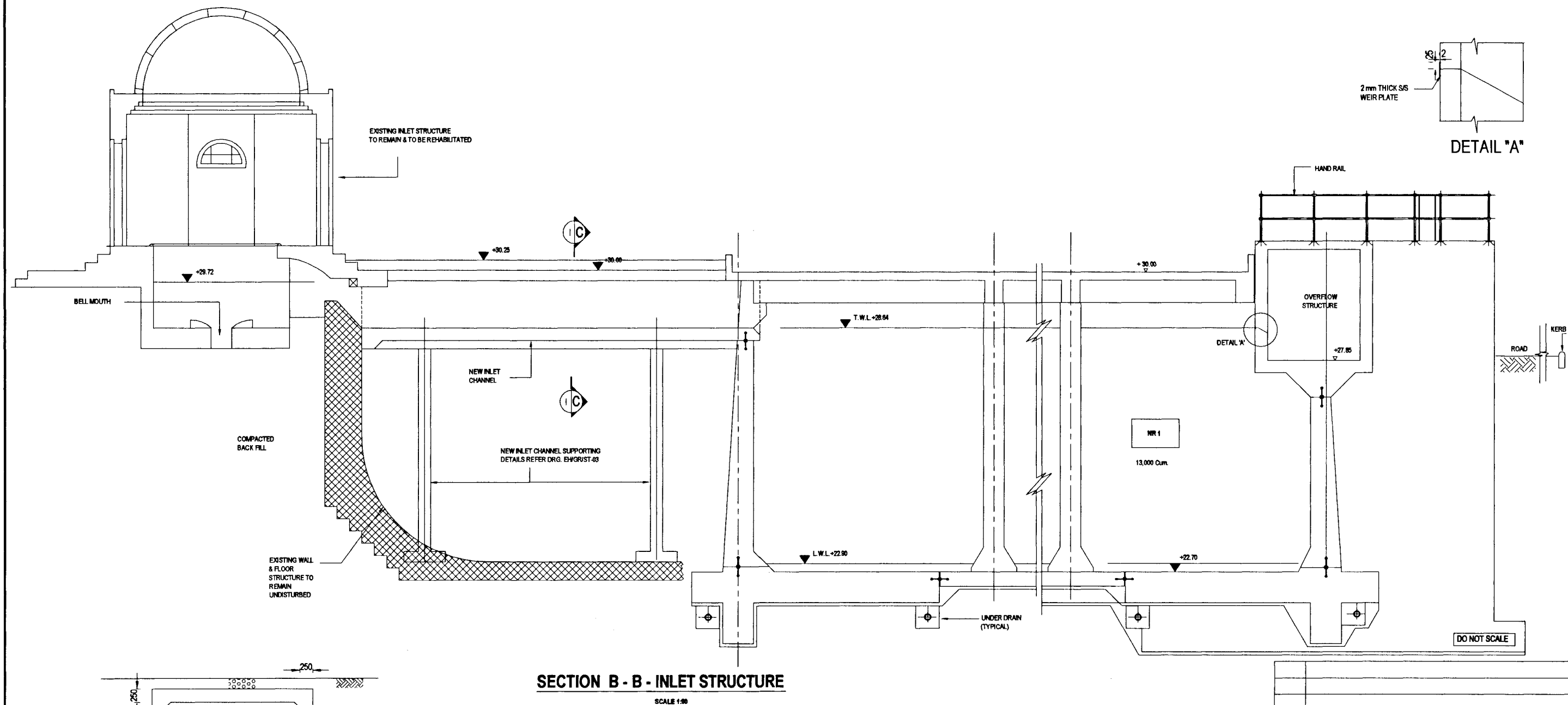
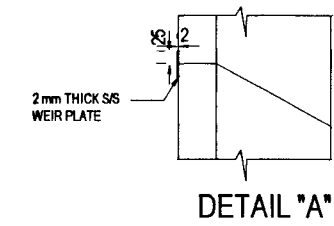
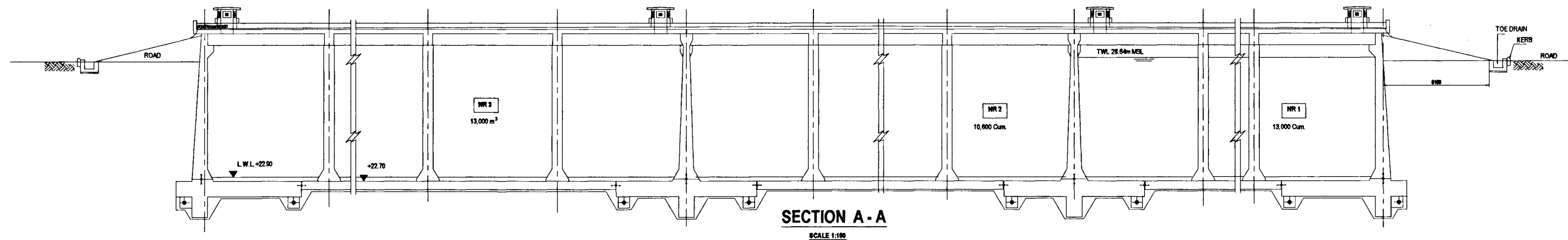
1. CONTRACTOR TO CONFIRM THE ELEMENT SIZES AND DIMENSIONS BY SITE MEASUREMENTS. THE DIMENSIONS SHOWN ON THE DRAWINGS ARE APPROXIMATE ONLY.
2. ELEMENT SIZES INDICATED ON THIS DRAWING ARE BASED ON THE DESCRIPTION PROVIDED IN REFERENCE 1 UNLESS OTHERWISE NOTED.
3. AS BUILT DRAWINGS ARE NOT AVAILABLE.


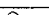

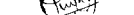





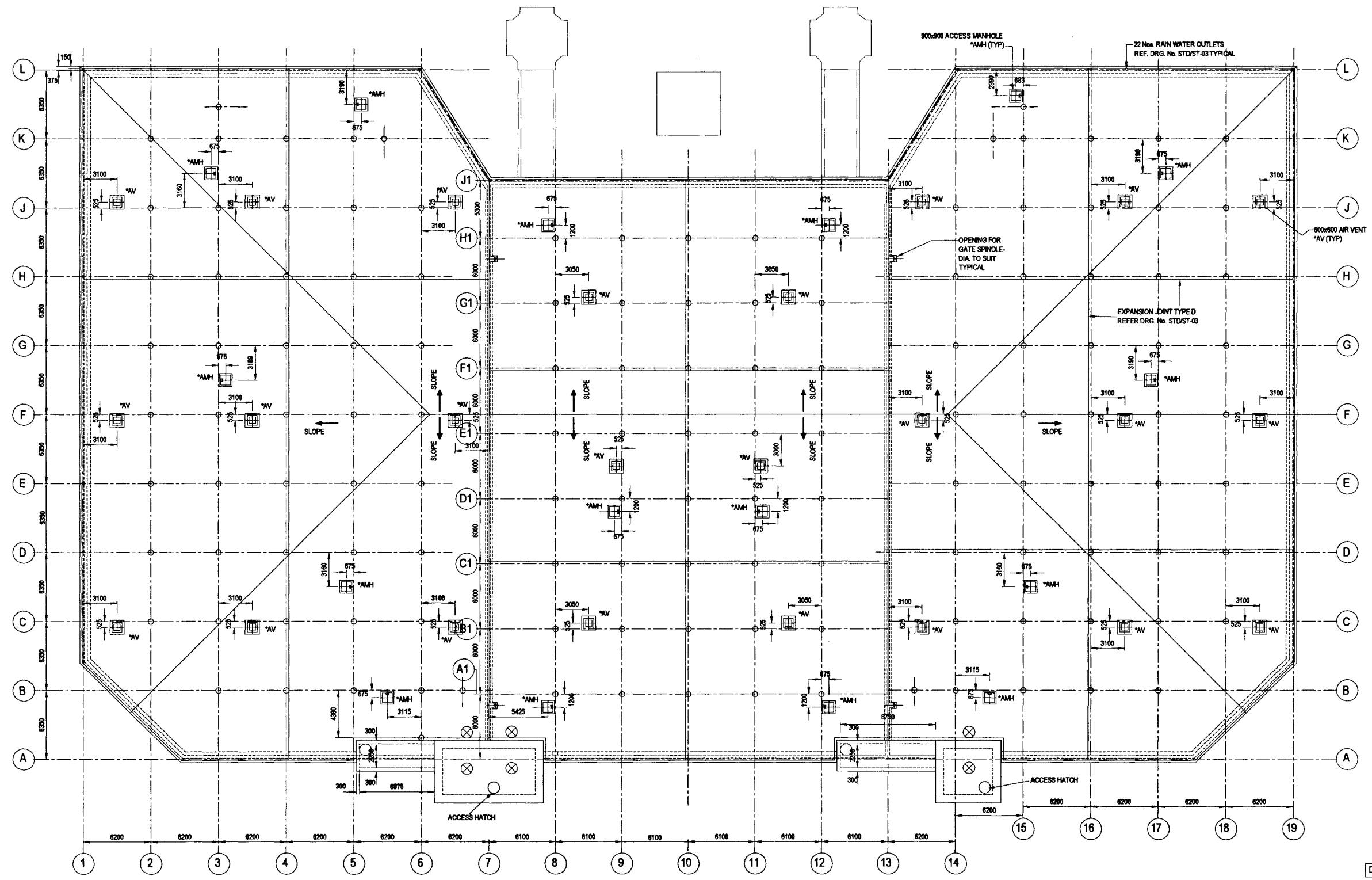
NATIONAL WATER SUPPLY AND DRAINAGE BOARD
THE PROJECT FOR THE REDUCTION OF NON-REVENUE WATER
IN THE GREATER COLOMBO AREA

JAPAN INTERNATIONAL COOPERATION AGENCY (JICA)
STUDY TEAM
NIHON SUIDO CONSULTANTS CO. LTD.,
TOKYO, JAPAN

SUB PROJECT:		TITLE:	
ELLIE HOUSE RESERVOIR		EXISTING RESERVOIR SECTIONAL DETAILS	
DESIGNED:	DRIVER:	DATE:	
CHECKED:	PM (NWSDB) INVOICE:	CONTRACT No:	
BY TEAM LEADER:	A.S.M (PM) INVOICE:	CRS. No:	
TEAM LEADER:	D.G.M (PM) INVOICE:		
			EH / GR / C-03



	NATIONAL WATER SUPPLY AND DRAINAGE BOARD THE PROJECT FOR THE REDUCTION OF NON-REVENUE WATER IN THE GREATER COLOMBO AREA		SUB PROJECT: ELLIE HOUSE RESERVOIR		TITLE: GENERAL ARRANGEMENT NEW RESERVOIR SECTIONAL DETAILS	
	JAPAN INTERNATIONAL COOPERATION AGENCY (JICA) STUDY TEAM NIHON SUDO CONSULTANTS CO. LTD., TOKYO, JAPAN		DESIGNED:  CHECKED:  DY. TEAM LEADER:  TEAM LEADER: 		DRAWN: DL PM (RW/SAPS) NUMBER:  A.G.M (PMD) NUMBER:  D.G.M (PMD) NUMBER:	



Scale - 1 : 50

Scale - 1 : 50

Scale - 1 : 50

PIPING SCHEDULE - Outlet From Reservoir (NR2 AND NR3)

Pipe No.	ND mm	Description	Length mm	Qty.
B1	1000	F/P/E Pipe Piece with Puddle Flange	1640	1
B2	1000	Flange Adapter		3
B3	1000	90° Flanged Bend		1
B4	1000	F/P/E Pipe Piece	625	1
B5	1000-1000	Flanged Tee		1
B6	1000	F/P/E Pipe Piece with Puddle Flange	3385	1
B7	1000	Coupling		1
B8	1000	F/P/E Pipe Piece with Puddle Flange	1800	1

PIPING SCHEDULE - Overflow Pipe (NR2 AND NR3)

Pipe No.	ND mm	Description	Length mm	Qty.
C1	500	P/E Pipe Piece with Puddle Flange	2575	1
C2	500	Flange Adapter		4
C3	500	Flanged Duckfoot Bend		1
C4	500	F/P/E Pipe Piece with Puddle Flange	1385	1
C5	500	F/P/E Pipe Piece	1240	1
C6	500	90° Flanged Bend		2
C7	500	D/F Pipe Piece with Puddle Flange	3185	1
C8	500-500	Flanged Tee		2
C9	500	F/P/E Pipe Piece	4315	1
C10	500	F/P/E Pipe Piece with Puddle Flange	2125	1
C11	500	S/P/E Pipe Piece with Puddle Flange	1950	2
C12	500	D/F Pipe Piece	1795	2
C13	500	Coupling		2
C14	500	D/F Pipe Piece	750	1

VALVE SCHEDULE

SG-EH-OU3	1000	Wall Mounted Penstock Gate	1
BV-EH-OU3	1000	Butterfly Valve	1
SG-EH-OU2	1000	Wall Mounted Penstock Gate	1
BV-EH-OU2	1000	Butterfly Valve	1
BV-EH-W2	500	Butterfly Valve	1
BV-EH-W3	500	Butterfly Valve	1

DO NOT SCALE



NATIONAL WATER SUPPLY AND DRAINAGE BOARD
THE PROJECT FOR THE REDUCTION OF NON-REVENUE WATER
IN THE GREATER COLOMBO AREA



JAPAN INTERNATIONAL COOPERATION AGENCY (JICA)
STUDY TEAM

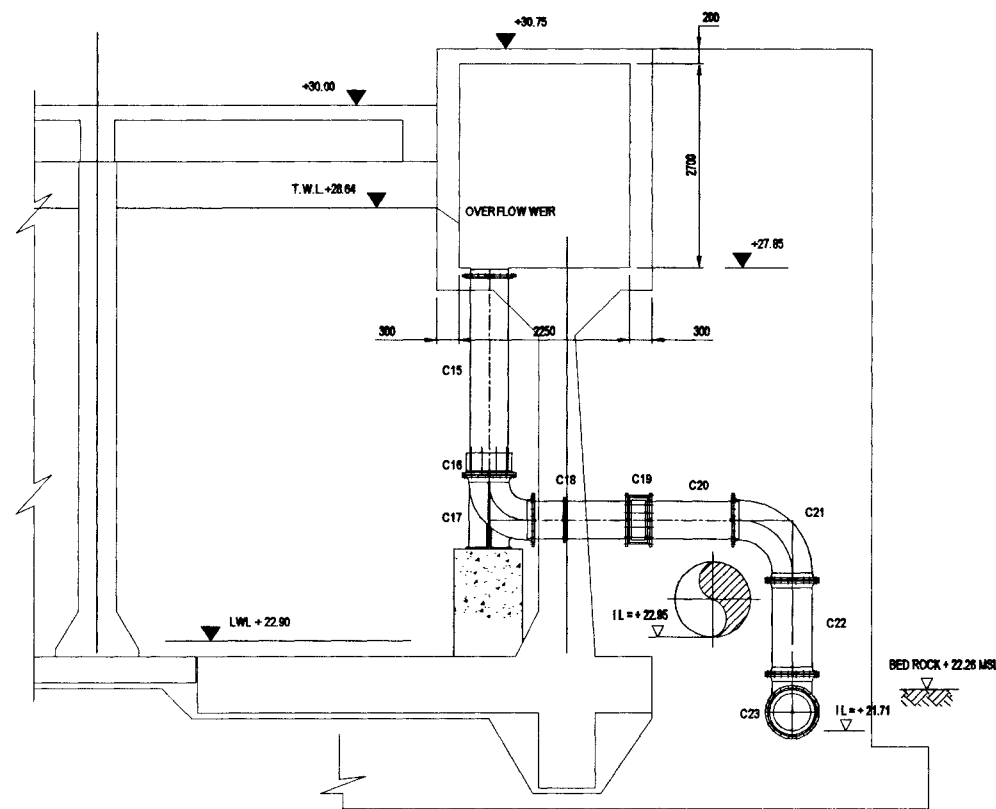
NIHON SUDO CONSULTANTS CO. LTD.,
TOKYO, JAPAN

	SUB PROJECT:	
D	ELLIE HOUSE	
R	RESERVOIR	

TITLE:
OUTLET & OVERFLOW AT NR 2/ NR3
PLAN AND SECTION

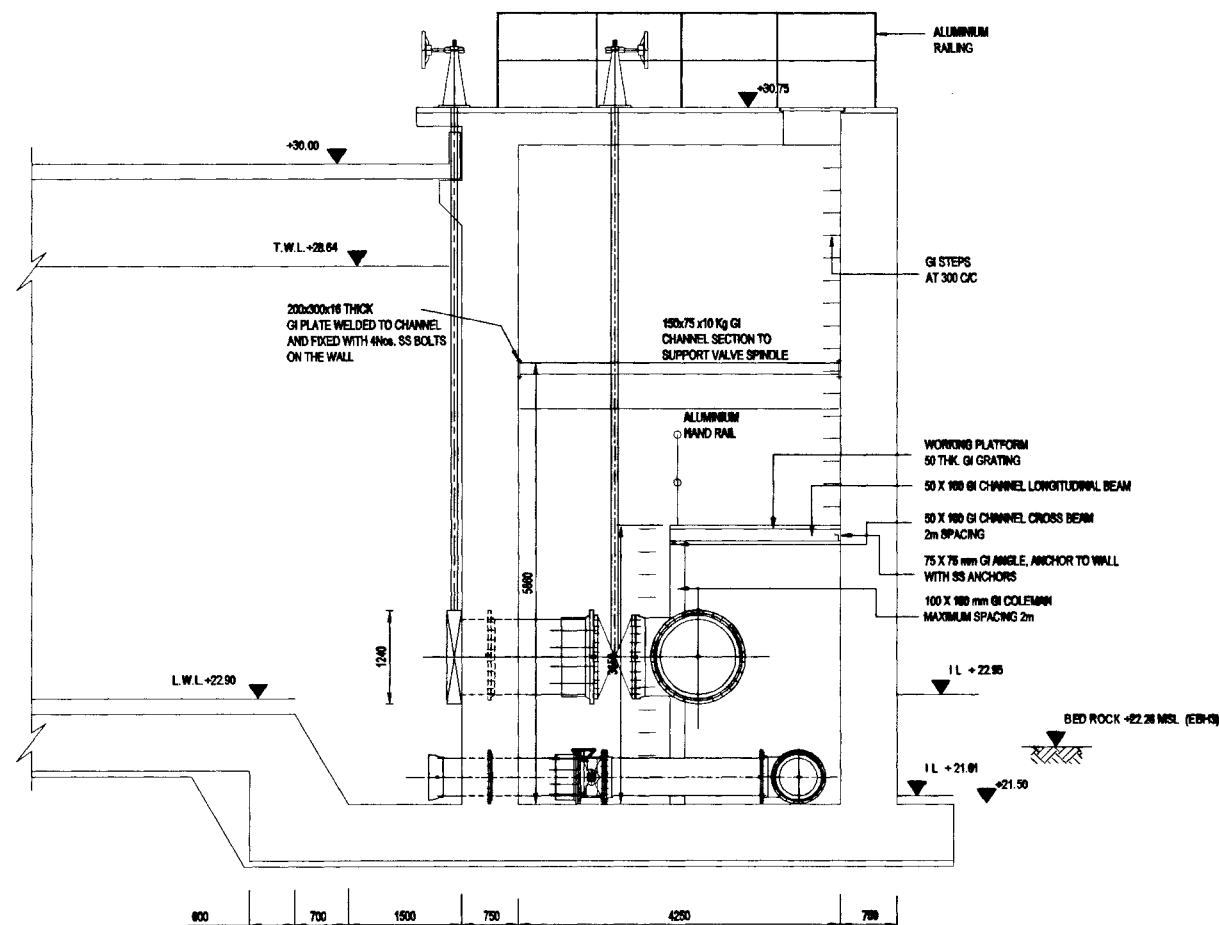
DESIGNED:	<i>Rd</i>
CHECKED:	<i>[Signature]</i>
BY TEAM LEADER:	<i>[Signature]</i>
TEAM LEADER:	<i>[Signature]</i>

DATE:	JUN 2001
DRUM:	DL
FW (NRWISAP) NWISD:	
CONTRACT No:	NRW / CW
A.G.M (PMD) NWISD:	
DRG. No:	EH / GR / C-07
D.G.M (PMD) NWISD:	



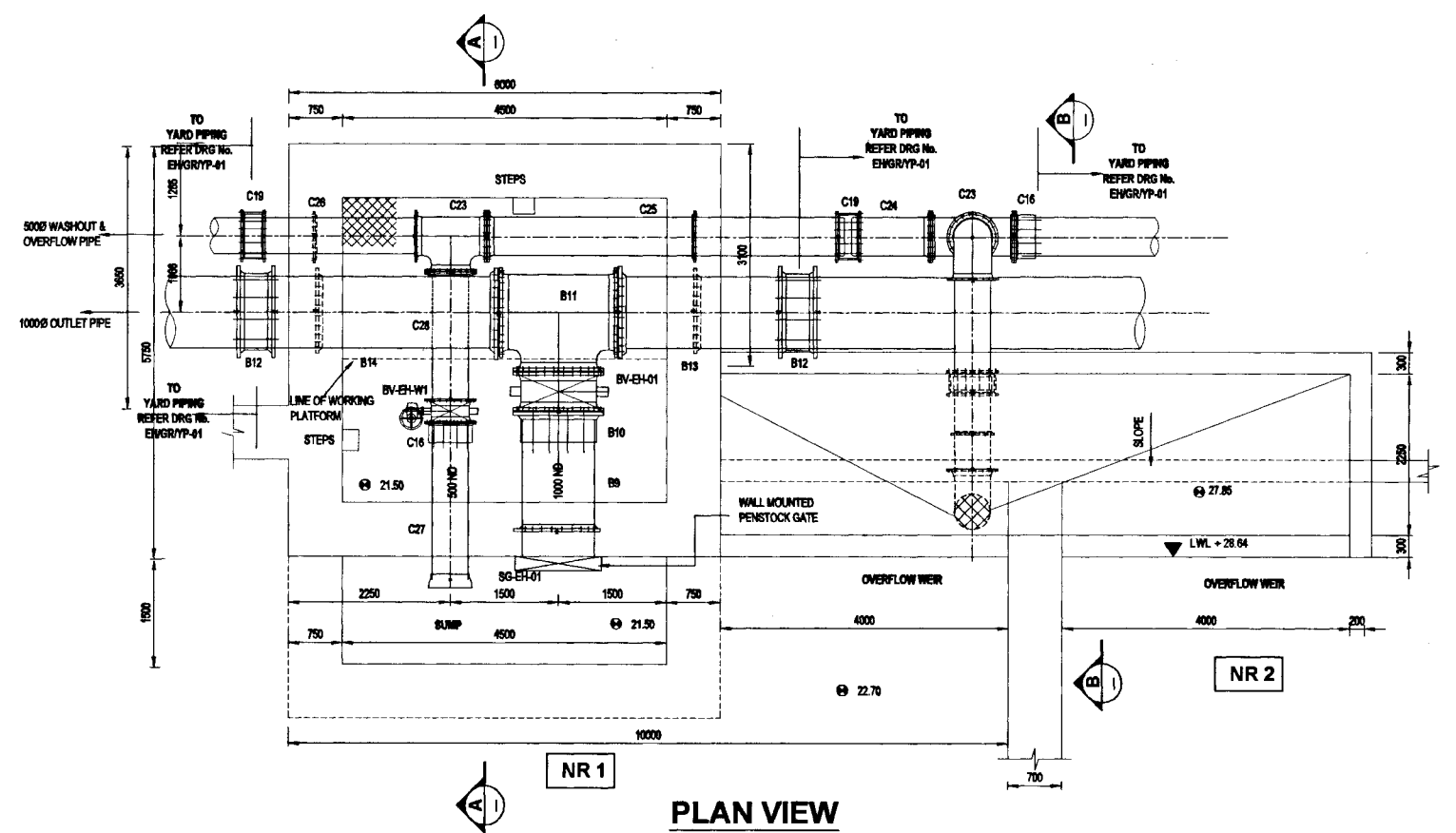
SECTION B-B

Scale - 1:50



SECTION A-A

Scale - 1:50



PLAN VIEW

Scale - 1:50

PIPING SCHEDULE - Outlet From Reservoir (NR 1)

Pipe No.	ND mm	Description	Length mm	Qty.
B9	1000	F/PE Pipe Piece with Puddle Flange	1775	1
B10	1000	Flange Adapter		1
B11	1000-1000	Flanged Tee		1
B12	1000	Coupling		2
B13	1000	F/PE Pipe Piece with Puddle Flange	2475	1
B14	1000	F/PE Pipe Piece with Puddle Flange	3400	1

PIPING SCHEDULE - Overflow & Washout Pipe (NR 1)

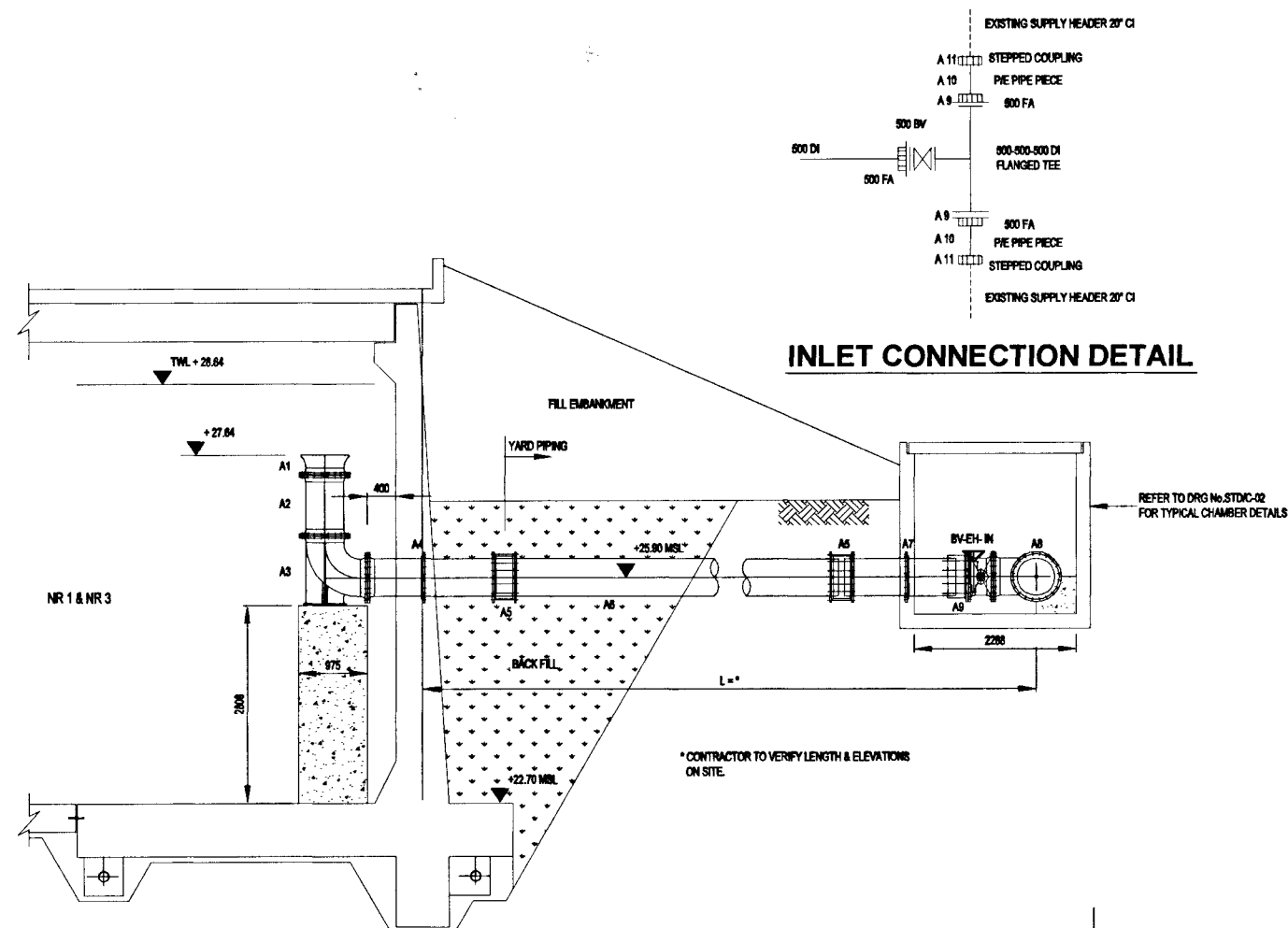
Pipe No.	ND mm	Description	Length mm	Qty.
C15	500	P/E Pipe Piece with Puddle Flange	2575	1
C16	500	Flange Adapter		2
C17	500	Flanged Duckfoot Bend		1
C18	500	F/PE Pipe Piece with Puddle Flange	1400	1
C19	500	Coupling		3
C20	500	F/PE Pipe Piece	1215	1
C21	500	90° Flanged Bend		1
C22	500	D/F Pipe Piece	1250	1
C23	500-500	Flanged Tee		2
C24	500	F/PE Pipe Piece	1100	1
C25	500	F/PE Pipe Piece with Puddle Flange	5000	1
C26	500	F/PE Pipe Piece with Puddle Flange	2270	1
C27	500	S/PE Pipe Piece with Puddle Flange	2000	1
C28	500	D/F Pipe Piece	1750	1

VALVE SCHEDULE

SG-EH-01	1000	Wall Mounted Penstock Gate	1
BV-EH-01	1000	Butterfly Valve	1
BV-EH-W1	500	Butterfly Valve	1

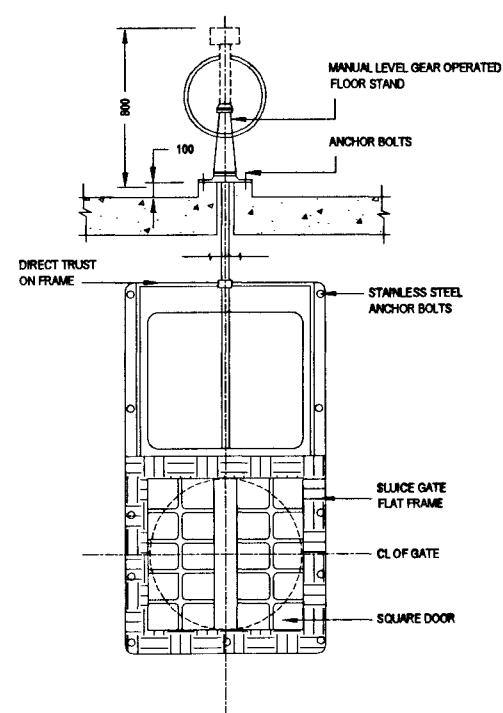
DO NOT SCALE

	NATIONAL WATER SUPPLY AND DRAINAGE BOARD THE PROJECT FOR THE REDUCTION OF NON-REVENUE WATER IN THE GREATER COLOMBO AREA		SUB PROJECT: ELLIE HOUSE RESERVOIR	TITLE: OUTLET & OVERFLOW AT NR1 / NR2 PLAN AND SECTION
	JAPAN INTERNATIONAL COOPERATION AGENCY (JICA) STUDY TEAM		DESIGNED:	DATE: JUN 2001
	NIHON SUIDO CONSULTANTS CO. LTD., TOKYO, JAPAN		CHECKED:	CONTRACT No.: NRW / CW
			TEAM LEADER:	D.G.M (P&I) NISDO:

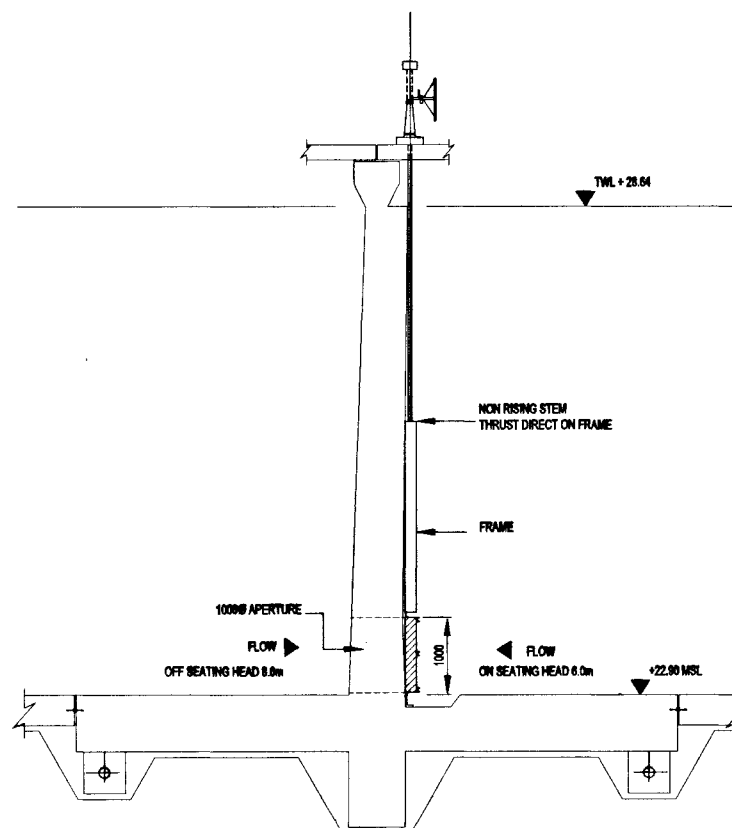


PIPING SCHEDULE (NR 1 & NR 3)				
PIPE No.	ND mm	DESCRIPTION	LENGTH mm	QTY.
A1	500	Flange Bell Mouth		2
A2	500	D/F Pipe Piece	850	2
A3	500	Duckfoot Bend		2
A4	500	F/PE Pipe Piece with Puddle Flange	1900	2
A5	500	Coupling		4
A6	500	P/E Pipe Piece	5000 to suit site	2
A7	500	P/E Pipe Piece	1560	2
A8	500-500	Flanged Tee		2
A9	500	Flanged Adaptor		6
A10	500	P/E Pipe Piece		4
A11	500	Stepped Coupling		4
VALVE SCHEDULE				
BV-EH-1	500	Butterfly Valve		2


INLET SECTION (TYPICAL OF 2)
Scale - 1:30

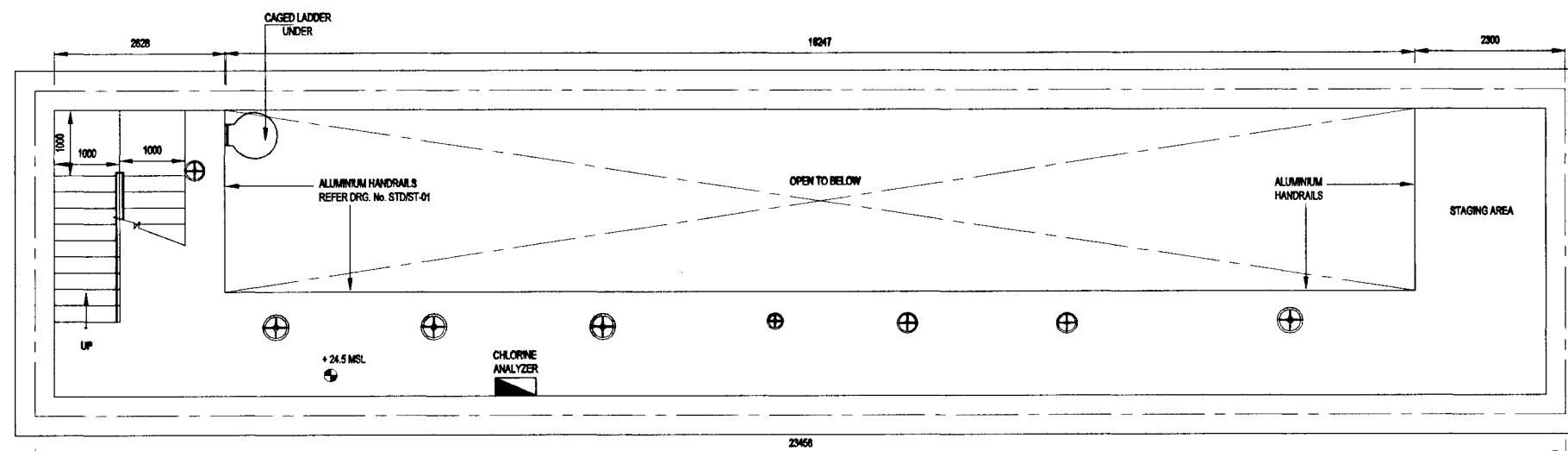


**OUTLET SLUICE GATE ELEVATION
TYPICAL OF (3)**
Scale - 1:25

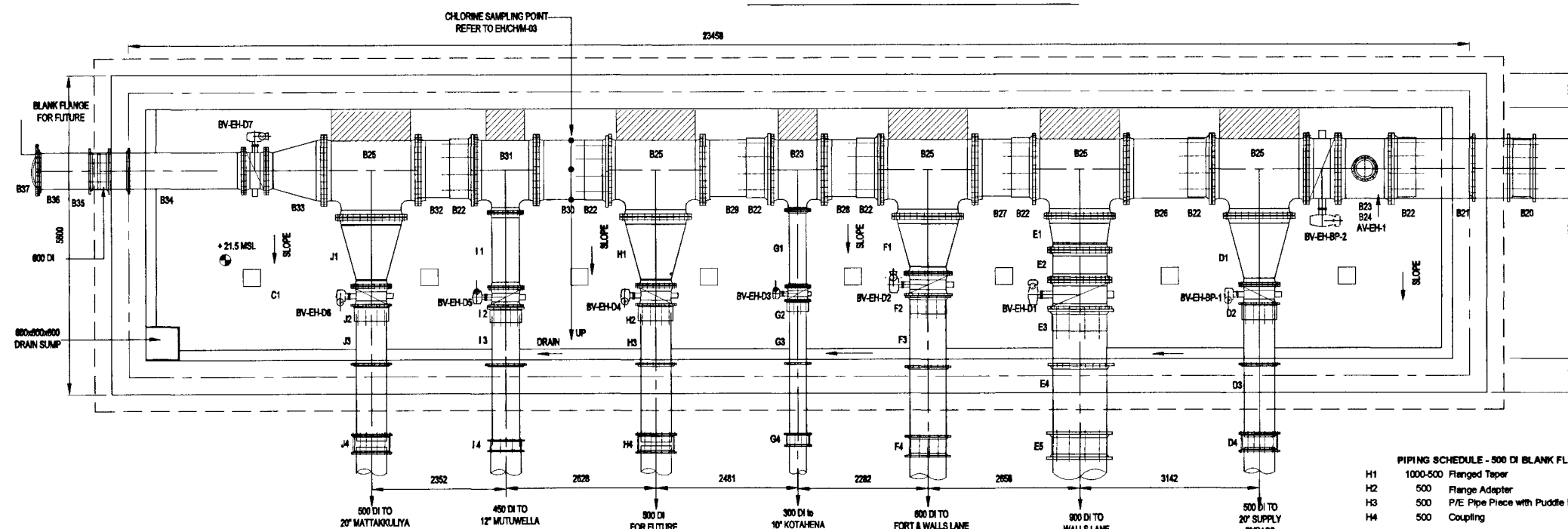


**SLUICE GATE INSTALLATION @
MIDDLE WALL (TYPICAL OF 4)**
Scale - 1:30

 NATIONAL WATER SUPPLY AND DRAINAGE BOARD THE PROJECT FOR THE REDUCTION OF NON-REVENUE WATER IN THE GREATER COLOMBO AREA		SUB PROJECT:		TITLE:	
		ELLIE HOUSE RESERVOIR		INLET CONNECTION TO NR1 AND SLUICE GATE INSTALLATION DETAILS	
DESIGNED:	DRAWN:	DATE:	JAN. 2017		
CHECKED:	PM (NRWSAP) NWSD:	CONTRACT No:		NRW / CW	
CV. TEAM LEADER:	A.G.M (PIED) NWSD:	DRG. No:		EH / GR / C-09	
TEAM LEADER:	D.G.M (PIED) NWSD:				



BASEMENT B1 LEVEL - 24.5MSL



BASEMENT B2 LEVEL - 21.5MSL

SCALE - 1:50

Pipe No.	ND mm	Description	Length mm	Qty.
B20	1000	Coupling		1
B21	1000	P/E Pipe Piece with Puddle Flange	1988	1
B22	1000	Flange Adapter		7
B23	1000-300	Flanged Tee		2
B24	300-150	Flanged Taper for Air Valve		1
B25	1000-1000	Flanged Tee		5
B26	1000	F/P/E Pipe Piece	1295	1
B27	1000	F/P/E Pipe Piece	845	1
B28	1000	F/P/E Pipe Piece	780	1
B29	1000	F/P/E Pipe Piece	990	1
B30	1000	F/P/E Pipe Piece	1070	1
B31	1000-450	Flanged Tee		1
B32	1000	F/P/E Pipe Piece	783	1
B33	1000-600	Flanged Taper		1
B34	600	F/P/E Pipe Piece with Puddle Flange	2500	1
B35	600	Coupling		1
B36	600	F/P/E Pipe Piece	1050	1
B37	600	Blank Flange		1

PIPING SCHEDULE - 500 DI TO 20" CI MAIN				
D1	1000-500	Flanged Taper		1
D2	900	Flange Adapter		1
D3	900	P/E Pipe Piece with Puddle Flange	2325	1
D4	500/20"	Stepped Coupling		1
PIPING SCHEDULE - 800 DI TO WALLS LANE				
E1	1000-500	Flanged Taper		1
E2	900	D/F Pipe Piece	500	1
E3	900	Flange Adapter		1
E4	900	P/E Pipe Piece with Puddle Flange	2220	1
E5	900	Coupling		1
PIPING SCHEDULE - 600 DI TO PORT & WALLS LANE				
F1	1000-500	Flanged Taper		1
F2	600	Flange Adapter		1
F3	600	P/E Pipe Piece with Puddle Flange	2635	1
F4	600	Coupling		1
PIPING SCHEDULE - 300 DI TO KOTAHENA				
G1	300	D/F Pipe Piece	1340	1
G2	300	Flange Adapter		1
G3	300	P/E Pipe Piece with Puddle Flange	2360	1
G4	300	Coupling		1

PIPING SCHEDULE - 500 DI BLANK FLANGE FOR FUTURE				
H1	1000-500	Flanged Taper		1
H2	500	Flange Adapter		1
H3	500	P/E Pipe Piece with Puddle Flange	2260	1
H4	500	Coupling		1

PIPING SCHEDULE - 450 DI TO MUTUWELLA				
I1	450	D/F Pipe Piece	1310	1
I2	450	Flange Adapter		1
I3	450	P/E Pipe Piece with Puddle Flange	2393	1
I4	450	Coupling		1

PIPING SCHEDULE - 800 DI TO MATTAKKULIYA				
J1	1000-500	Flanged Taper		1
J2	500	Flange Adapter		1
J3	500	P/E Pipe Piece with Puddle Flange	2260	1
J4	500	Coupling		1

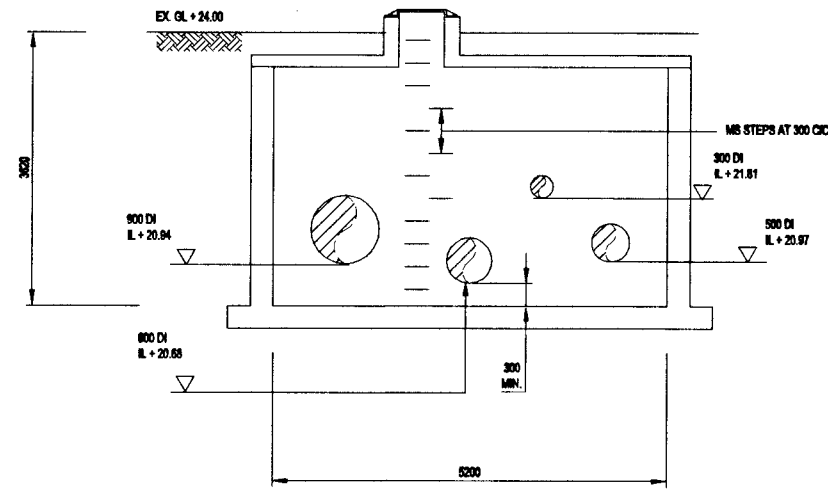
VALVE SCHEDULE				
AV-EH-1	150	D/O Air Valve		1
BV-EH-BP-2	1000	Butterfly Valve		1
BV-EH-D7	600	Butterfly Valve		1
BV-EH-BP-1	500	Butterfly Valve		1
BV-EH-D1	900	Butterfly Valve		1
BV-EH-D2	600	Butterfly Valve		1
BV-EH-D3	300	Butterfly Valve		1
BV-EH-D4	500	Butterfly Valve		1
BV-EH-D5	450	Butterfly Valve		1
BV-EH-D6	500	Butterfly Valve		1

SECTION B - B

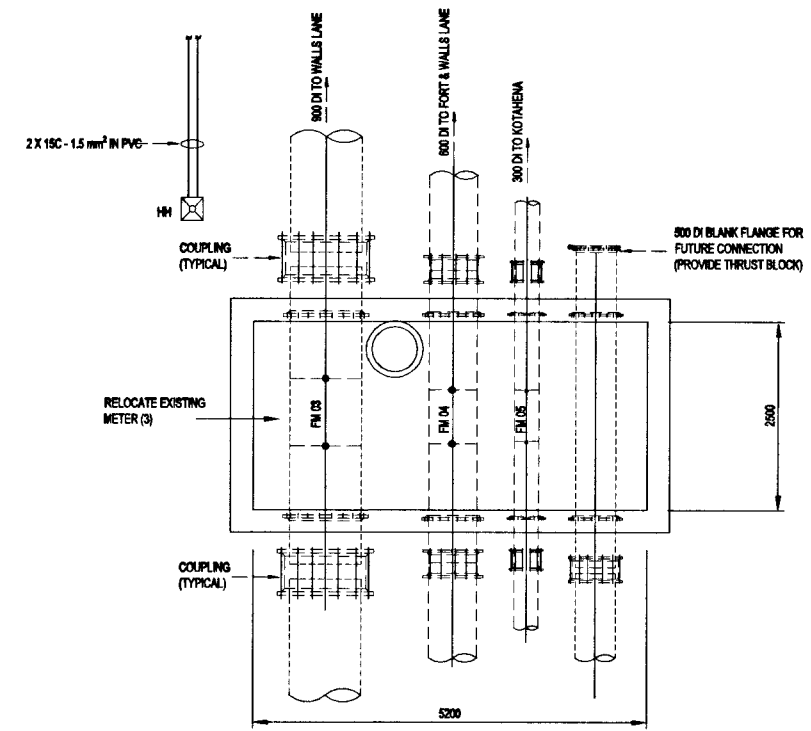
SCALE - 1:50

DO NOT SCALE

<p>NATIONAL WATER SUPPLY AND DRAINAGE BOARD THE PROJECT FOR THE REDUCTION OF NON-REVENUE WATER IN THE GREATER COLOMBO AREA</p> <p>JAPAN INTERNATIONAL COOPERATION AGENCY (JICA) STUDY TEAM</p> <p>NIHON SUDO CONSULTANTS CO. LTD., TOKYO, JAPAN</p>	<p>SUB PROJECT: ELLIE HOUSE RESERVOIR</p> <p>TITLE: VALVE HOUSE GENERAL ARRANGEMENT</p>	
	<p>DESIGNED: <i>[Signature]</i></p> <p>CHECKED: <i>[Signature]</i></p> <p>DRY. TEAM LEADER: <i>[Signature]</i></p> <p>TEAM LEADER: <i>[Signature]</i></p>	<p>DATE: JUN. 2001</p> <p>CONTRACT NO: NRW / CW</p> <p>DWG. NO: EH / GR / C-10</p>
	<p>DR. (NRW/SAP) INCHARGE: <i>[Signature]</i></p> <p>A.G.M (PMD) INCHARGE: <i>[Signature]</i></p> <p>D.G.M (PMD) INCHARGE: <i>[Signature]</i></p>	
	<p>REV. DESCRIPTION</p>	



SECTION



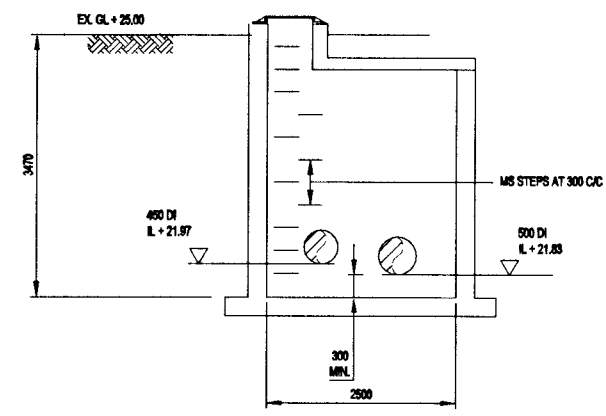
PLAN

DETAILS OF
FLOW METER CHAMBER - 1

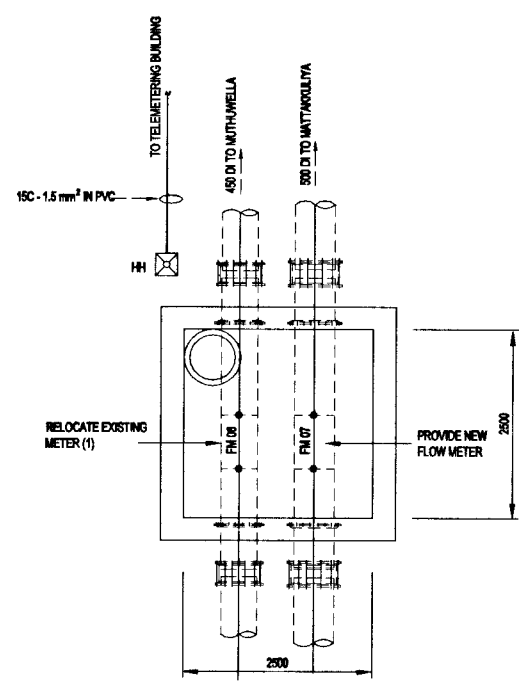
SCALE - 1:50

NOTES:

- EXTERNAL CLAMP ON FLOW METERS CONNECT TO EXISTING TELEMETERING SYSTEM (REFER TO DWG. No. ST04-03 DETAIL 16).
- FLOW METERS TO MATCH EXISTING DATUM FLUTE.
- FOR STRUCTURAL DETAILS OF FLOW METER CHAMBERS REFER DRG. No. EHVGRST-03.
- REFER TO DRG. No. EHVGR-01 FOR CABLES DETAILS.



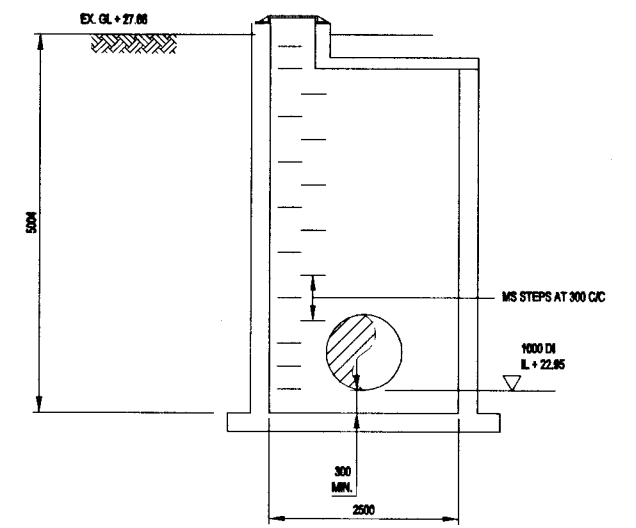
SECTION



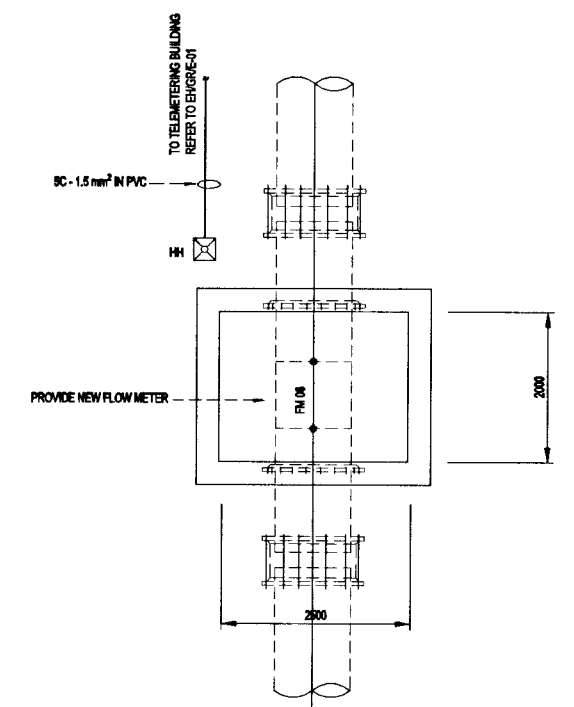
PLAN

DETAILS OF
FLOW METER CHAMBER - 2

SCALE - 1:50



SECTION




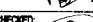

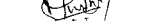



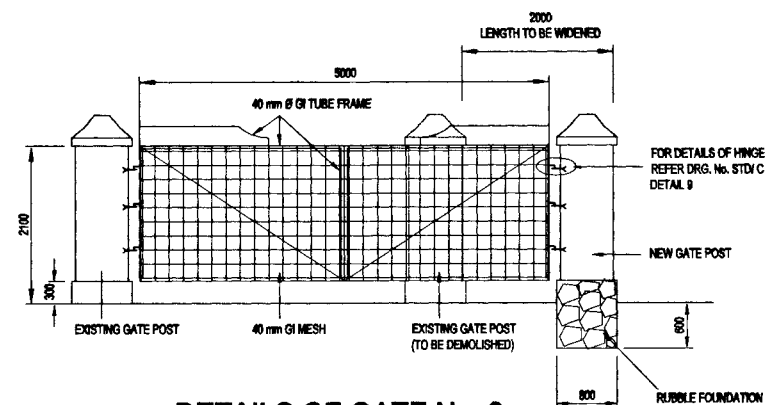
PLAN

DETAILS OF
FLOW METER CHAMBER - 3

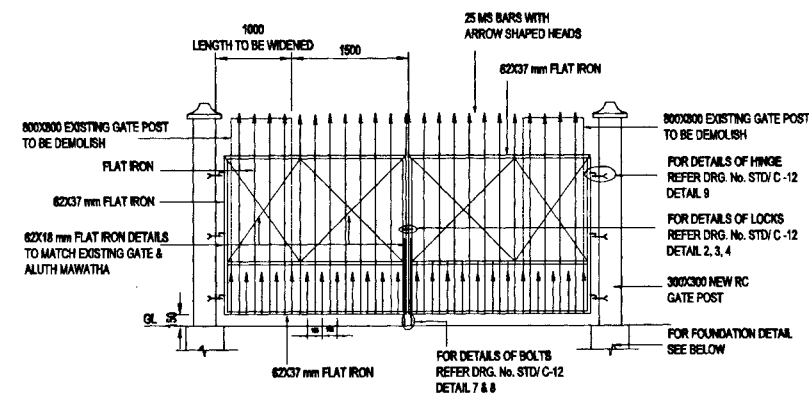
SCALE - 1:50

DO NOT SCALE

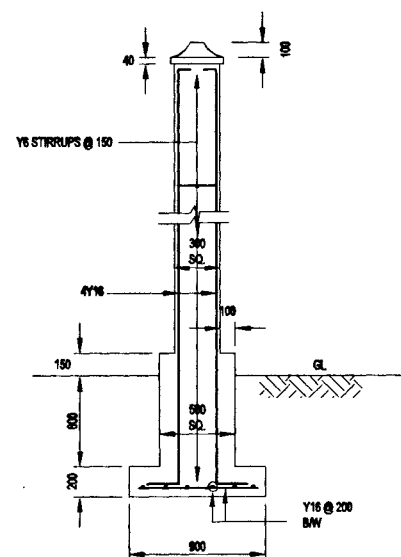
	NATIONAL WATER SUPPLY AND DRAINAGE BOARD THE PROJECT FOR THE REDUCTION OF NON-REVENUE WATER IN THE GREATER COLOMBO AREA	SUB PROJECT: ELLIE HOUSE RESERVOIR		TITLE: DETAILS OF FLOW METER CHAMBERS		
		DESIGNED: 		DRAWN: 	DATE: JAN. 2001	
JAPAN INTERNATIONAL COOPERATION AGENCY (JICA) STUDY TEAM NIHON SUDO CONSULTANTS CO. LTD., TOKYO, JAPAN		CHECKED: 		PM (NWS&D) INCHD: 		CONTRACT No: NRW / CW
		DY. TEAM LEADER: 		A.G.M (PM) INCHD: R D A D		DRG. No: EH / GR / C-11
		TEAM LEADER: 		D.G.M (PM) INCHD:		



DETAILS OF GATE No. 2

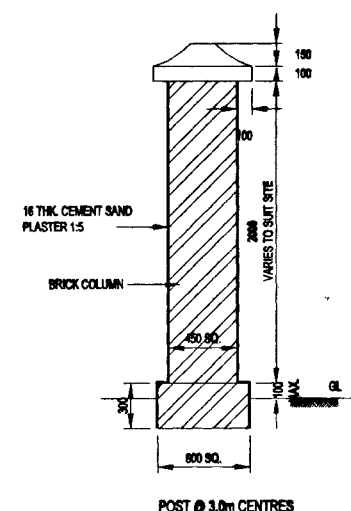


DETAILS OF GATE No.1
AT DELASALE ROAD

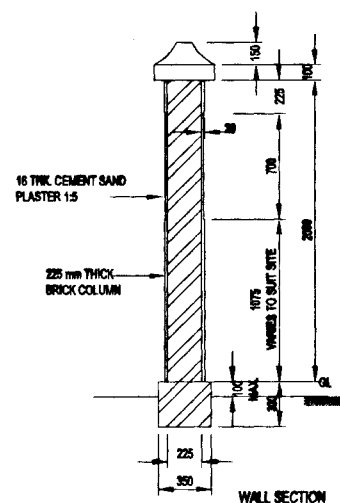


FOUNDATION & R/F DETAILS OF
PROPOSED GATE POST No.1

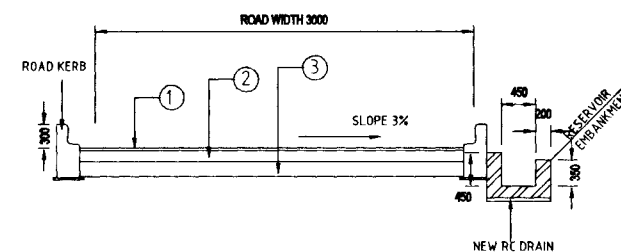
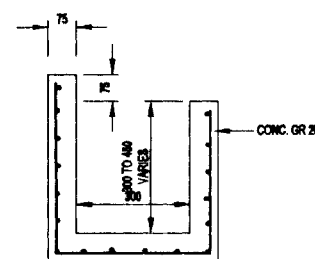
SCALE - 1:25



DETAIL OF PROPOSED BOUNDARY WALL

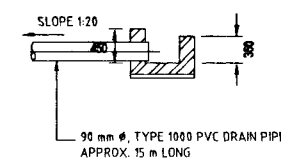


1 - R/F DETAILS OF DRAIN

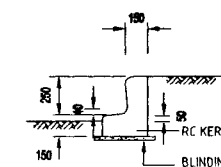


SECTION A

SCALE - 1:50




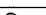






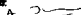
DETAIL OF SUMP PUMP
DISCHARGE

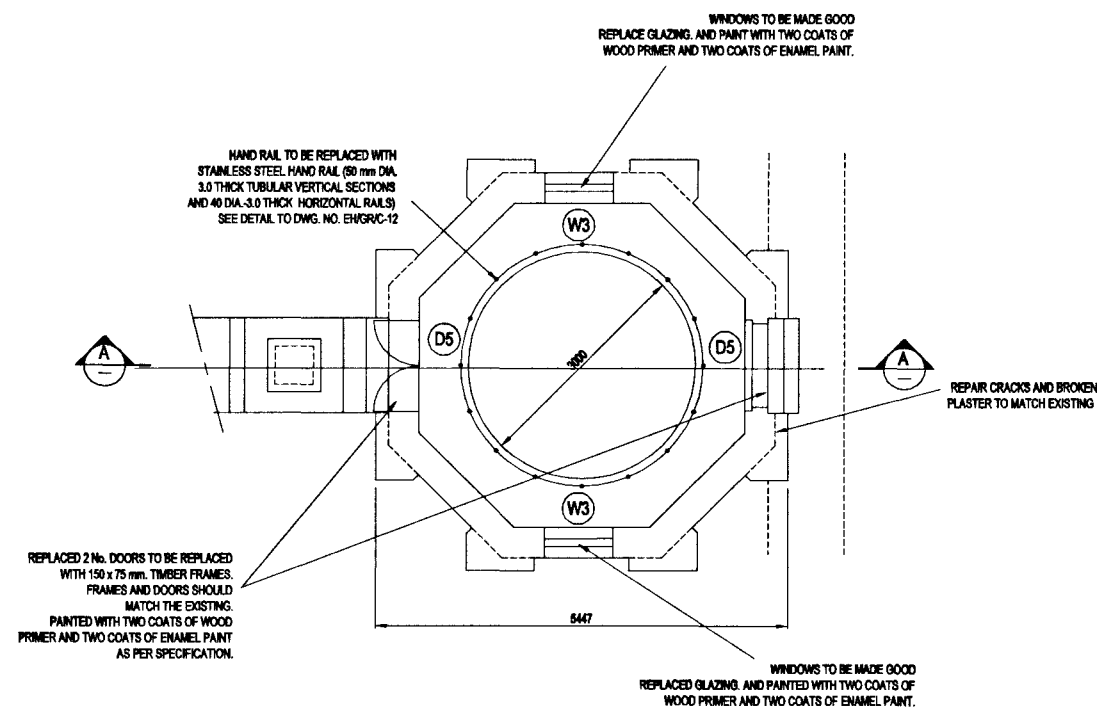


DETAIL OF ROAD KERB

SCALE - 1:25

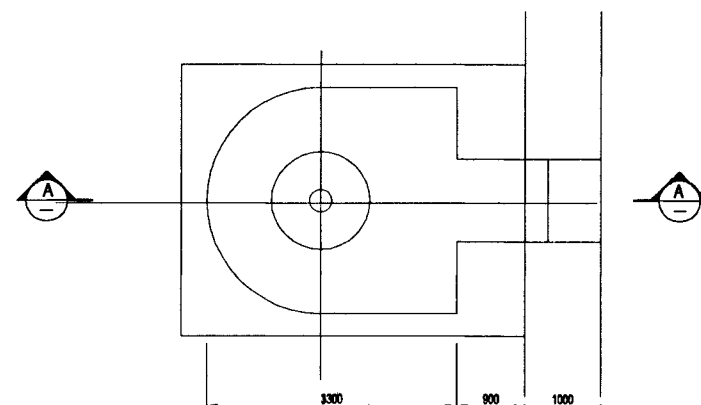
DO NOT SCALE

	NATIONAL WATER SUPPLY AND DRAINAGE BOARD THE PROJECT FOR THE REDUCTION OF NON-REVENUE WATER IN THE GREATER COLOMBO AREA	SUB PROJECT: ELLIE HOUSE RESERVOIR		TITLE: RESTORATION OF ROADS, DRAINS, WALLS AND GATES DETAILS	
JAPAN INTERNATIONAL COOPERATION AGENCY (JICA) STUDY TEAM NIHON SUIDO CONSULTANTS CO. LTD., TOKYO, JAPAN		DESIGNED: 	DRAWN: 	DATE: JAN. 2001	
		CHECKED: 	PM (PM/S&P) INCHARGE: 	CONTRACT No: NRW / CW	
		DT. TEAM LEADER: 	A.G.M (PMD) INCHARGE: R. D. A. 	DRG. No:	EH / GR / C - 13
		TEAM LEADER: 	D.O.M (PMD) INCHARGE: 		



GROUND FLOOR PLAN

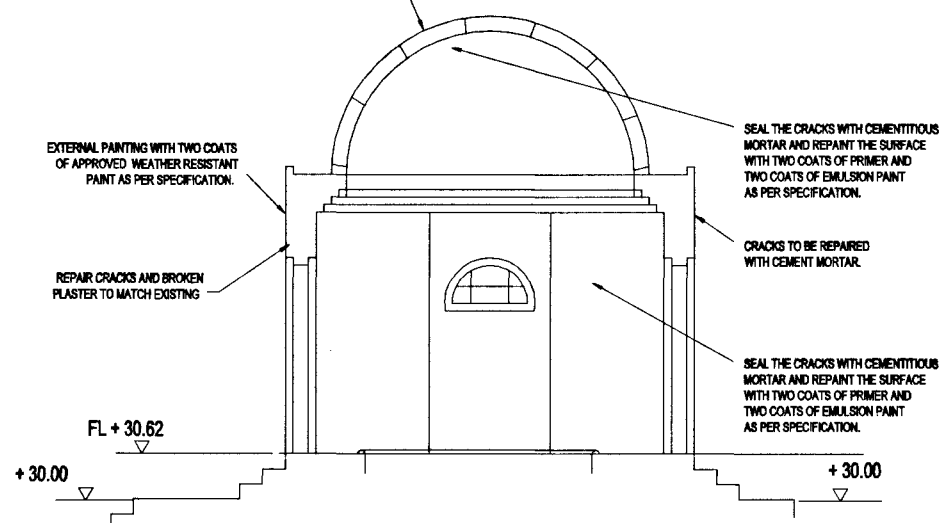
SCALE - 1:50



PLAN AT BELLMOUTH

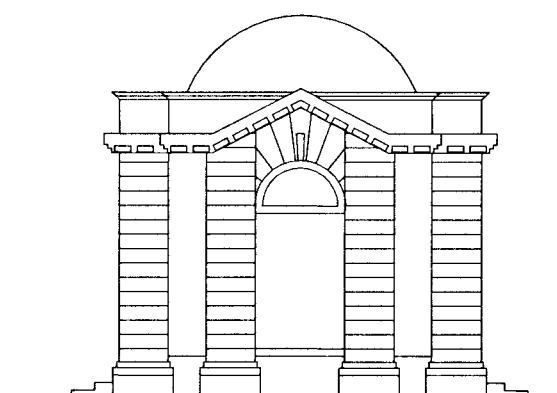
SCALE - 1:50

1. EXISTING SCREED TO BE REMOVED.
2. APPLY TWO PART ACRYLIC POLYMER MODIFIED CEMENTITIOUS COATING.
3. REPLASTER WITH NON SHRINK MORTAR.
4. REPAINT THE SURFACE WITH TWO COATS OF APPROVED WEATHER RESISTANT PAINT AS PER SPECIFICATION.




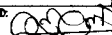
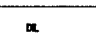
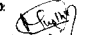

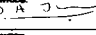
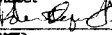
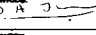
SECTION A - A

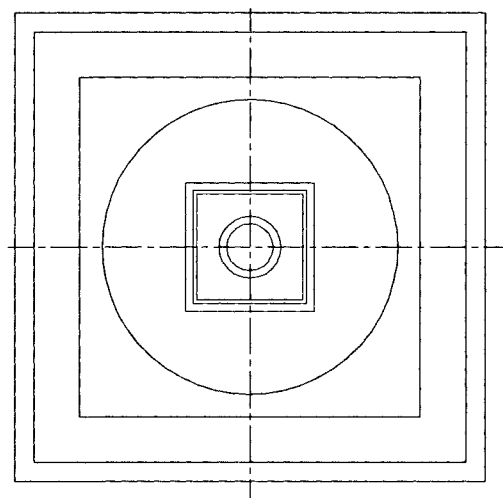
SCALE - 1:50



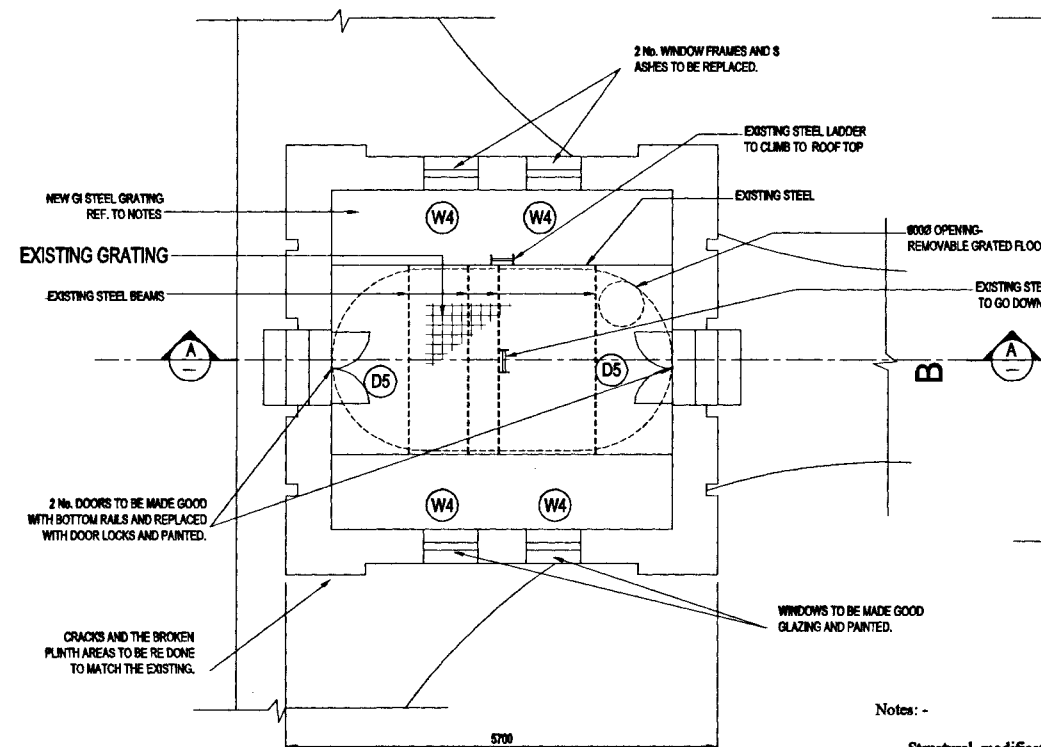
FRONT ELEVATION

DO NOT SCALE

	NATIONAL WATER SUPPLY AND DRAINAGE BOARD THE PROJECT FOR THE REDUCTION OF NON-REVENUE WATER IN THE GREATER COLOMBO AREA		SUB PROJECT: ELLIE HOUSE RESERVOIR		TITLE: RESTORATION OF INLET STRUCTURE BUILDING NO.1 & NO.3	
	JAPAN INTERNATIONAL COOPERATION AGENCY (JICA) STUDY TEAM NISHIN SUIDO CONSULTANTS CO. LTD., TOKYO, JAPAN		DESIGNED: 	DRAWN: 	DATE: JUL 2009	CONTRACT NO: NRW / CW
			CHECKED: 	PM (NWS&D) NUMBER: 	A.G.M (P&D) NUMBER: 	DRG. NO: EH / GR / A - 01
			DT. TEAM LEADER: 	D.G.M (P&D) NUMBER: 		

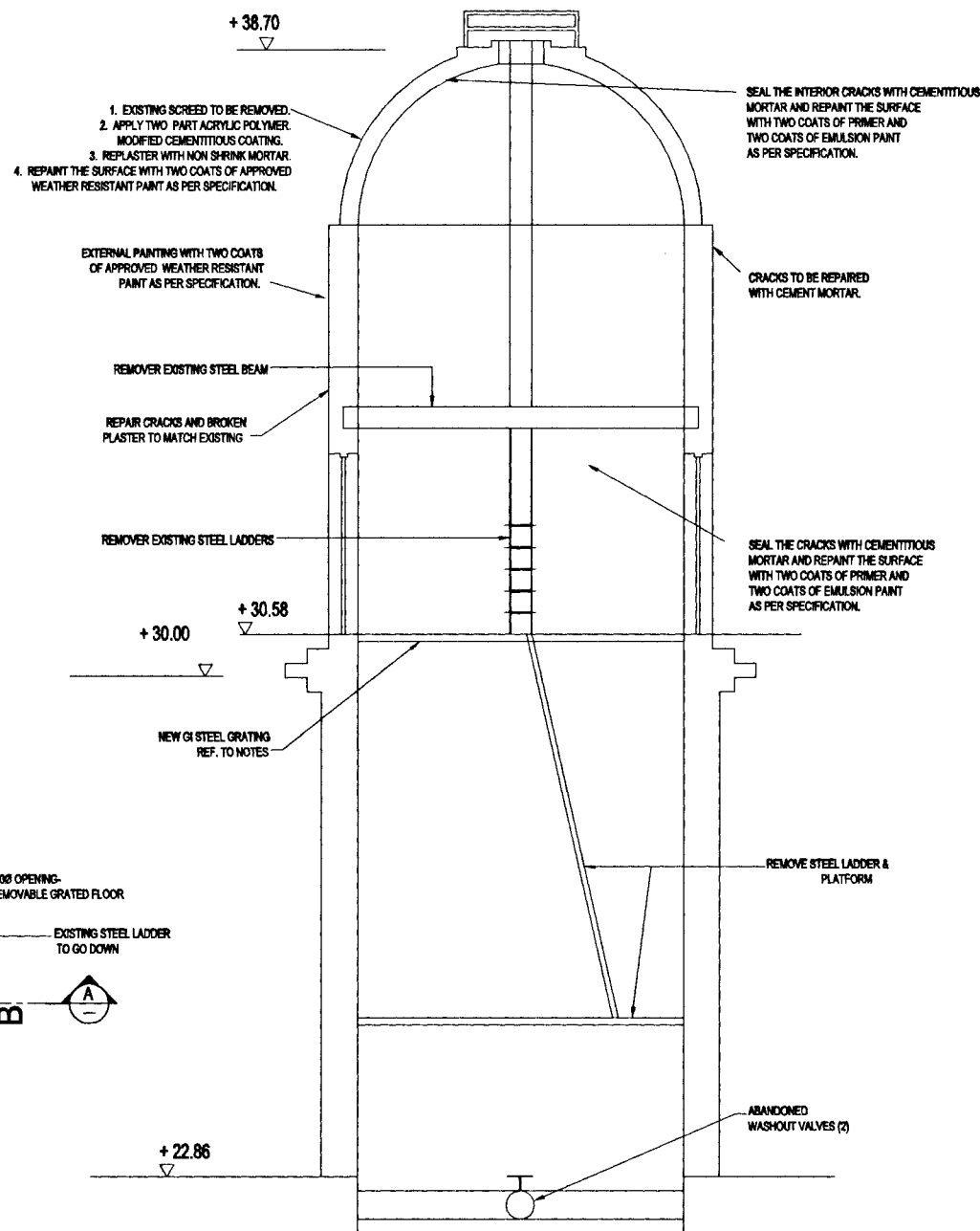


ROOF PLAN



GROUND FLOOR PLAN

SCALE: 1:50

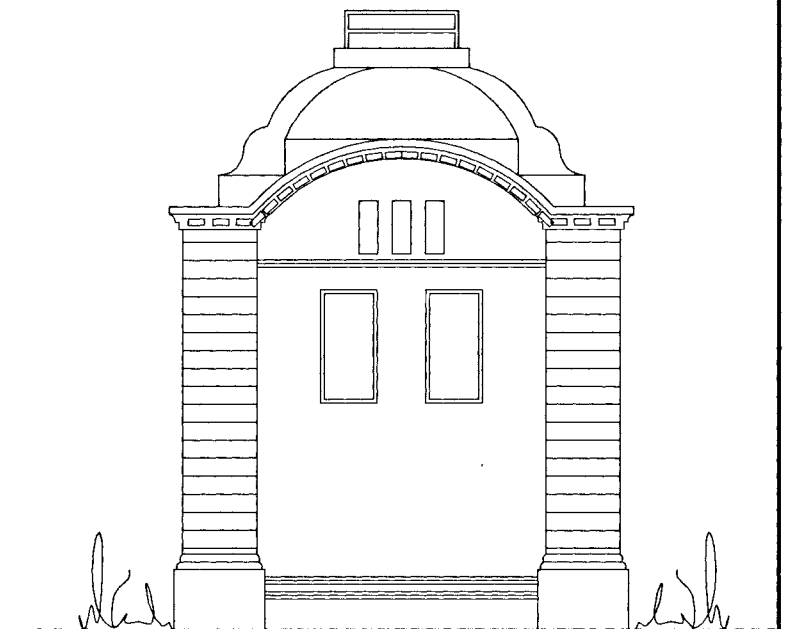


SECTION A - A

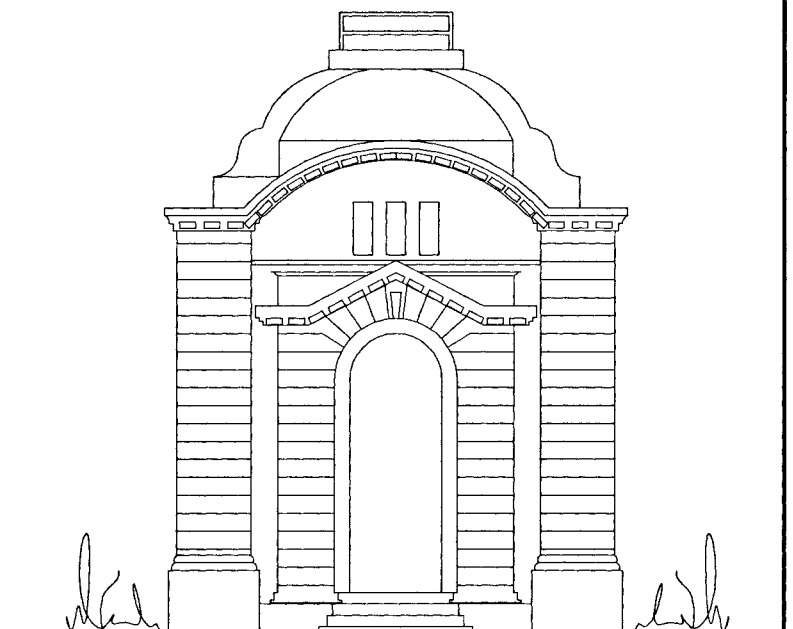
Notes: -

Structural modifications to the grated floor and ladders and its supports of the existing outlet structure

1. Remove the existing steel ladder from grated floor to the rooftop including the steel beam support at mid height and repair any damage to the existing structure. Remove the existing steel ladder from grated floor to inside of the outlet structure and repair any damage to the existing structure.
2. Remove the existing grated floor with its steel angle iron supports along the edges and the steel beam supports spanning across the opening.
3. Provide 4 numbers of new steel beam sections of 152 x 152 x 23, kg/m equally spaced and to span across the opening. -non shrink concrete and non-shrink mortar shall be used to fill the cavities and to make new supports.
4. Provide a new grated floor (opening sizes not more than 50 mm x 50 mm) supported on the newly placed steel beams and on the perimeter concrete floor. Make a new opening of 600 mm dia. and provide a removable grated cover for that area. This floor should be properly bolted to the steel beams.
5. Provide a new poly-carbonate -translucent cover and properly fix it to the existing roof.
6. All structural steel works shall be hot dip galvanized after fabrication.
7. The new grated floor should be designed to withstand a super load of 5.0 kN/m². The design calculations and detailed fabrication drawings for all rectification works shall be submitted for approval prior to start with the works.

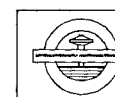


ELEVATION 'A'



ELEVATION 'B'

DO NOT SCALE

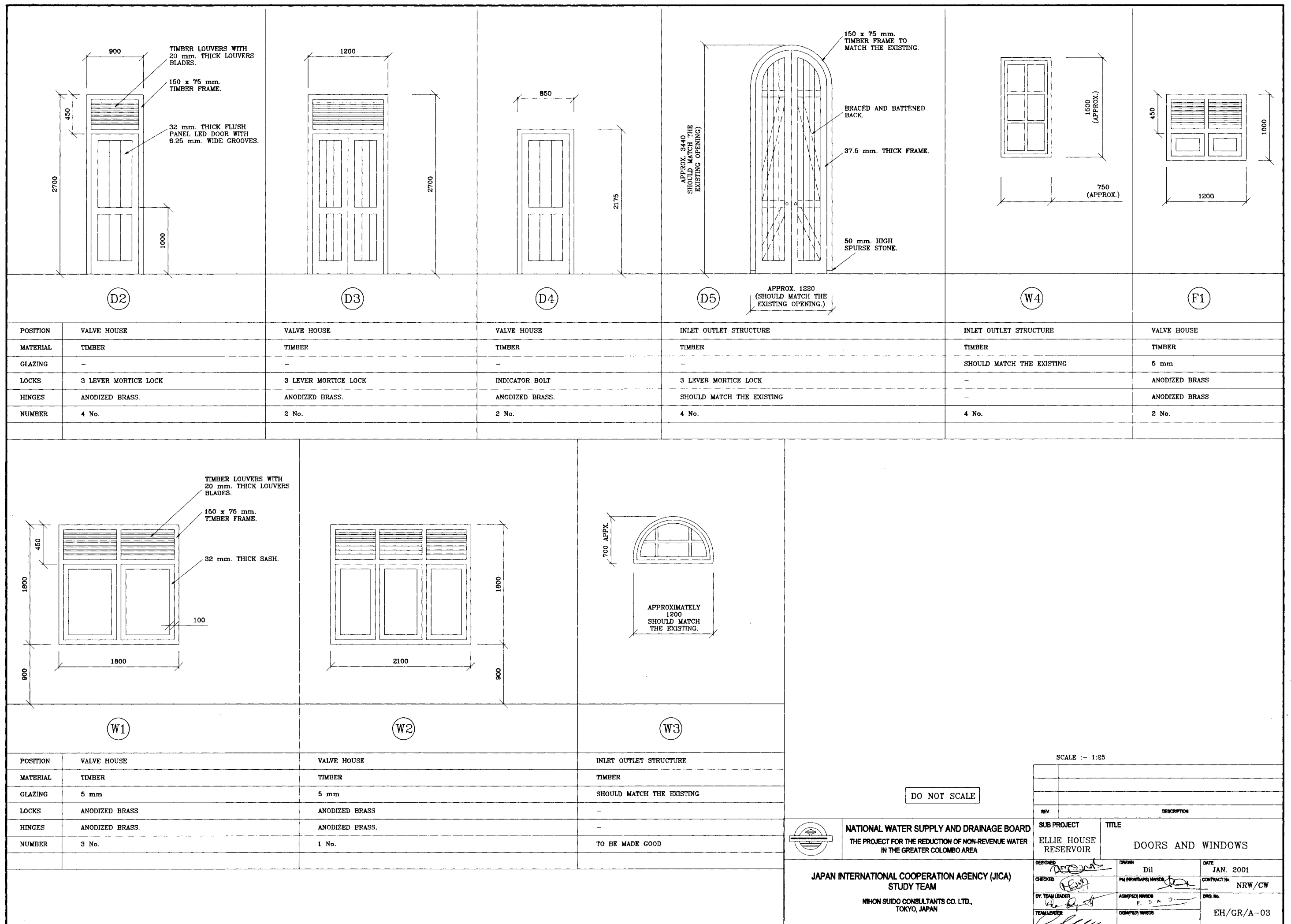


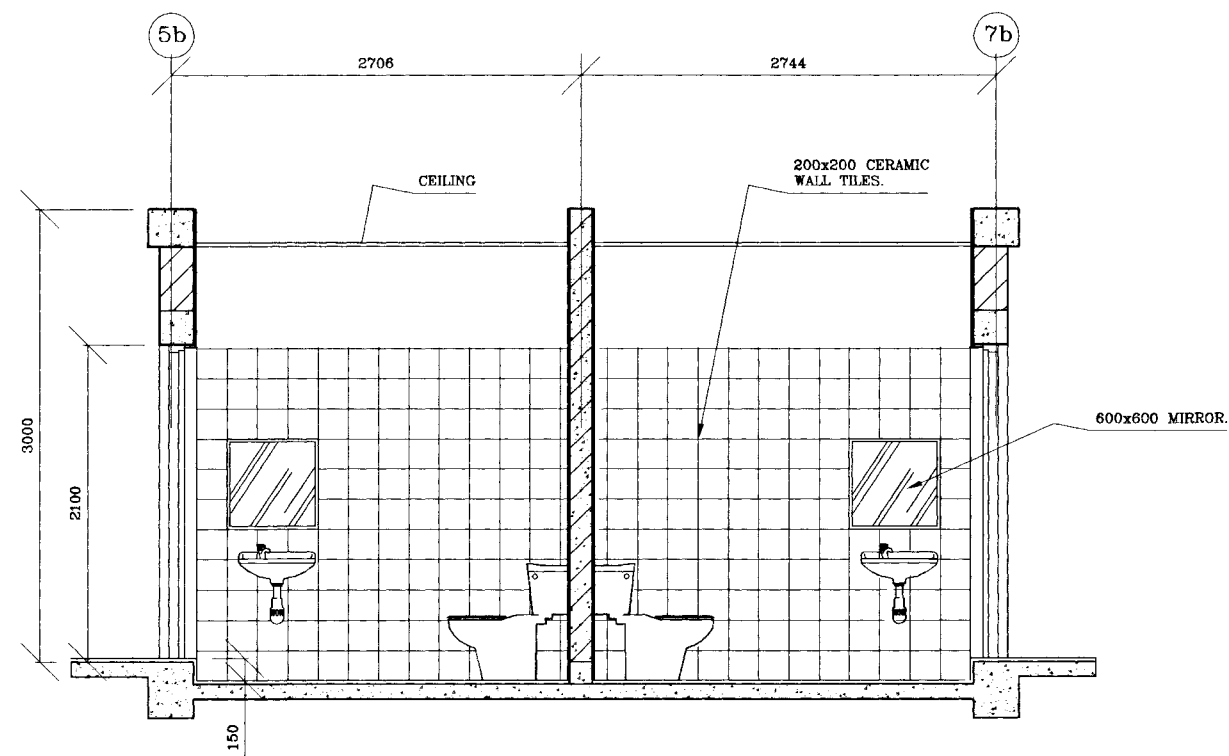
NATIONAL WATER SUPPLY AND DRAINAGE BOARD
THE PROJECT FOR THE REDUCTION OF NON-REVENUE WATER
IN THE GREATER COLOMBO AREA

JAPAN INTERNATIONAL COOPERATION AGENCY (JICA)
STUDY TEAM
NIHON SUDO CONSULTANTS CO. LTD.,
TOKYO, JAPAN

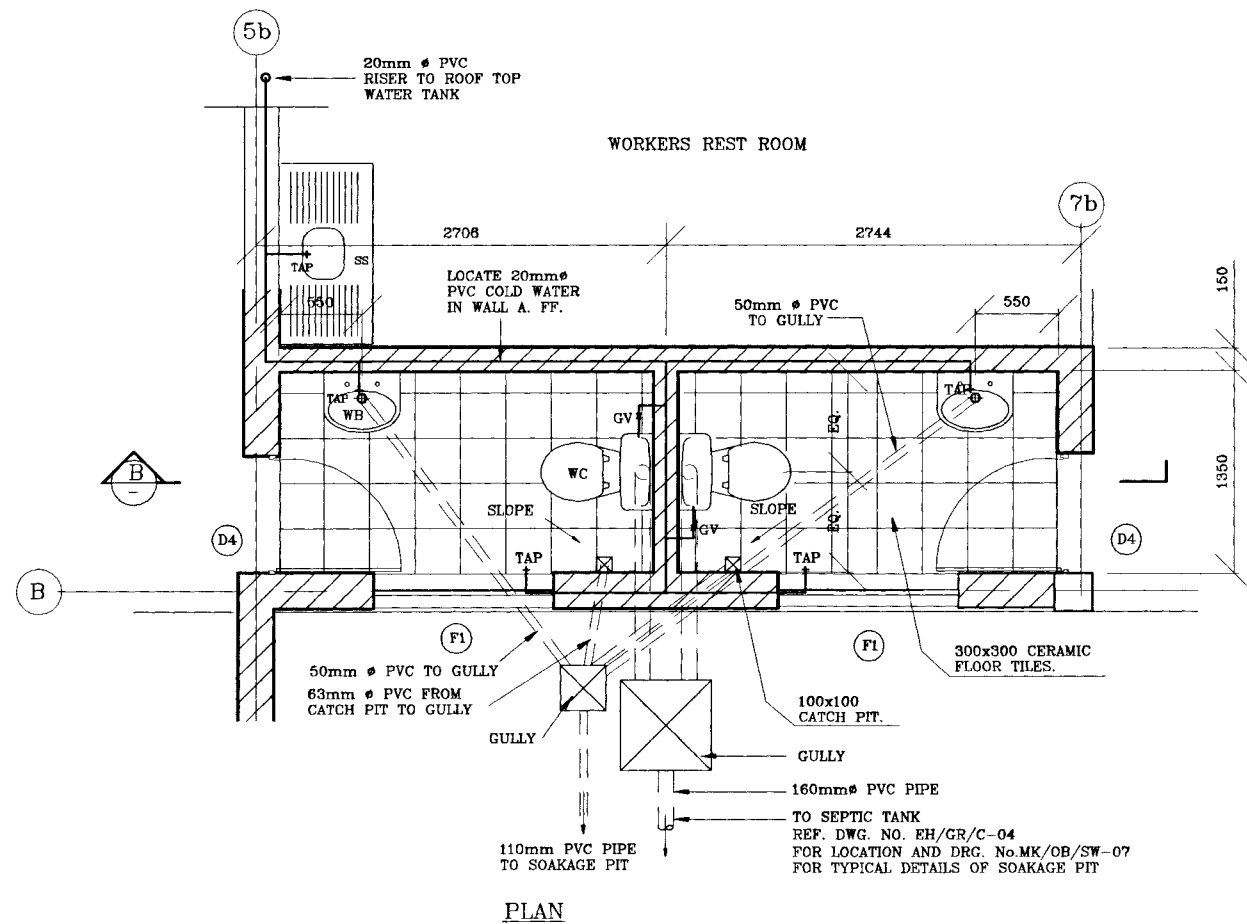
SUB PROJECT:		TITLE:	
ELLIE HOUSE RESERVOIR		RESTORATION OF EXISTING OUTLET STRUCTURE BUILDING No.2	
DESIGNED: [Signature]	DATE: JAN. 2001	CONTRACT No: NRW / CW	
CHECKED: [Signature]	DATE: [Signature]	CONTRACT No: NRW / CW	
DR. TEAM LEADER: [Signature]	DATE: [Signature]	CONTRACT No: NRW / CW	
TEAM LEADER: [Signature]	DATE: [Signature]	CONTRACT No: NRW / CW	

EH / GR / A -02

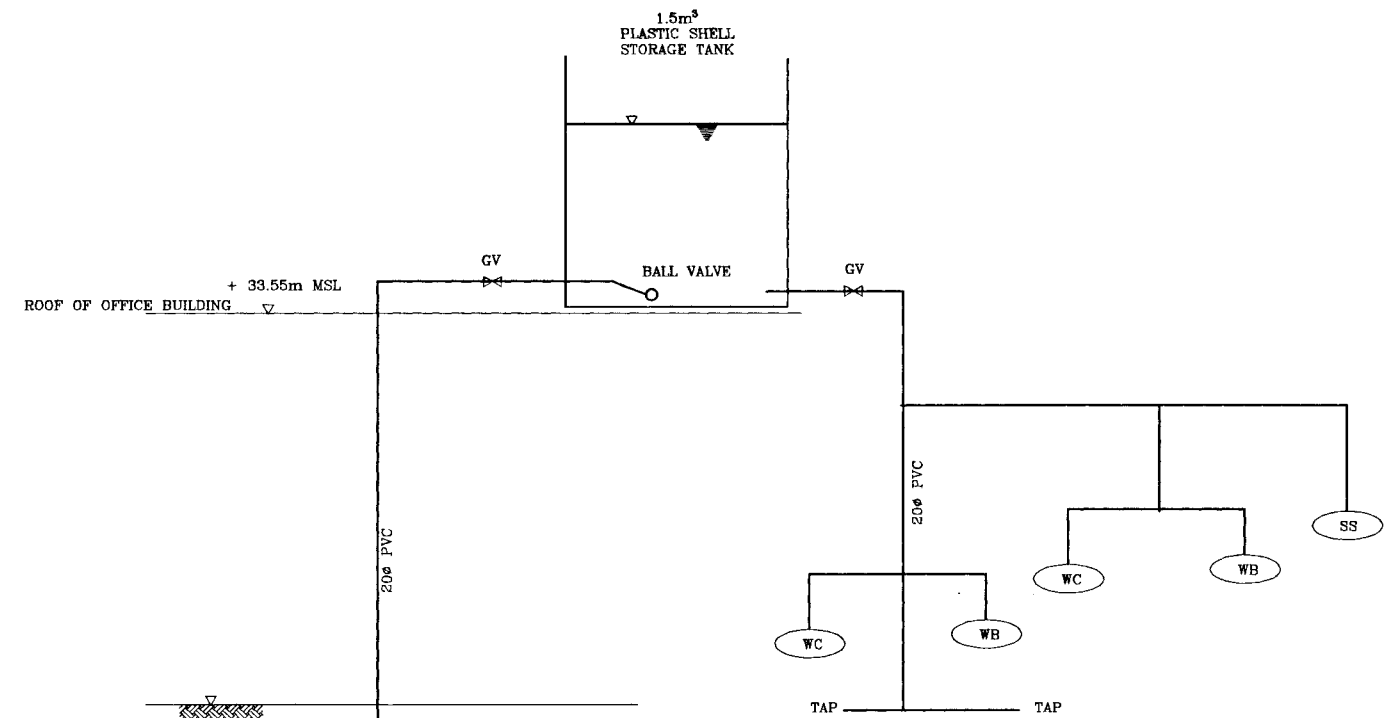




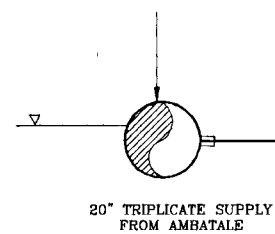
SECTION B-B



PLAN



REFER TO DRG. No. STD/C-09
TYPICAL SERVICE CONNECTION DETAILS



DO NOT SCALE

REV.		DESCRIPTION	
SUB PROJECT		TITLE	
ELLIE HOUSE RESERVOIR		VALVE HOUSE OFFICE TOILET DETAILS	
DESIGNED	DRAWN	DATE	JAN. 2001
CHECKED	PM (NRWSAPS) NWSD	CONTRACT NO.	NRW/CW
DR. TEAM LEADER	ADMPED NWSD	DRG. No.	EH/GR/A-04
TEAM LEADER	DRAPAD NWSD		

NATIONAL WATER SUPPLY AND DRAINAGE BOARD
THE PROJECT FOR THE REDUCTION OF NON-REVENUE WATER
IN THE GREATER COLOMBO AREA

JAPAN INTERNATIONAL COOPERATION AGENCY (JICA)
STUDY TEAM

NIHON SUIDO CONSULTANTS CO. LTD.,
TOKYO, JAPAN