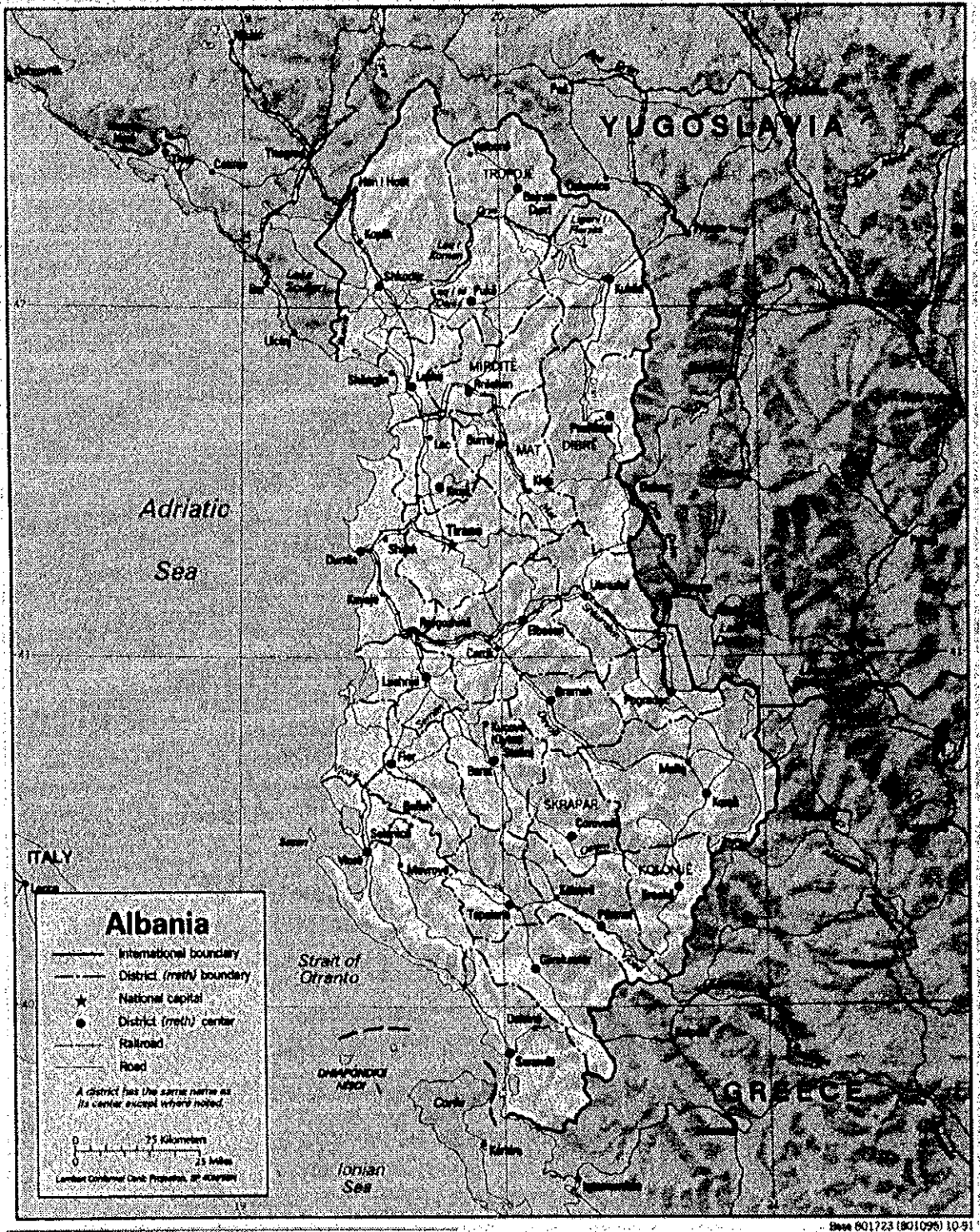
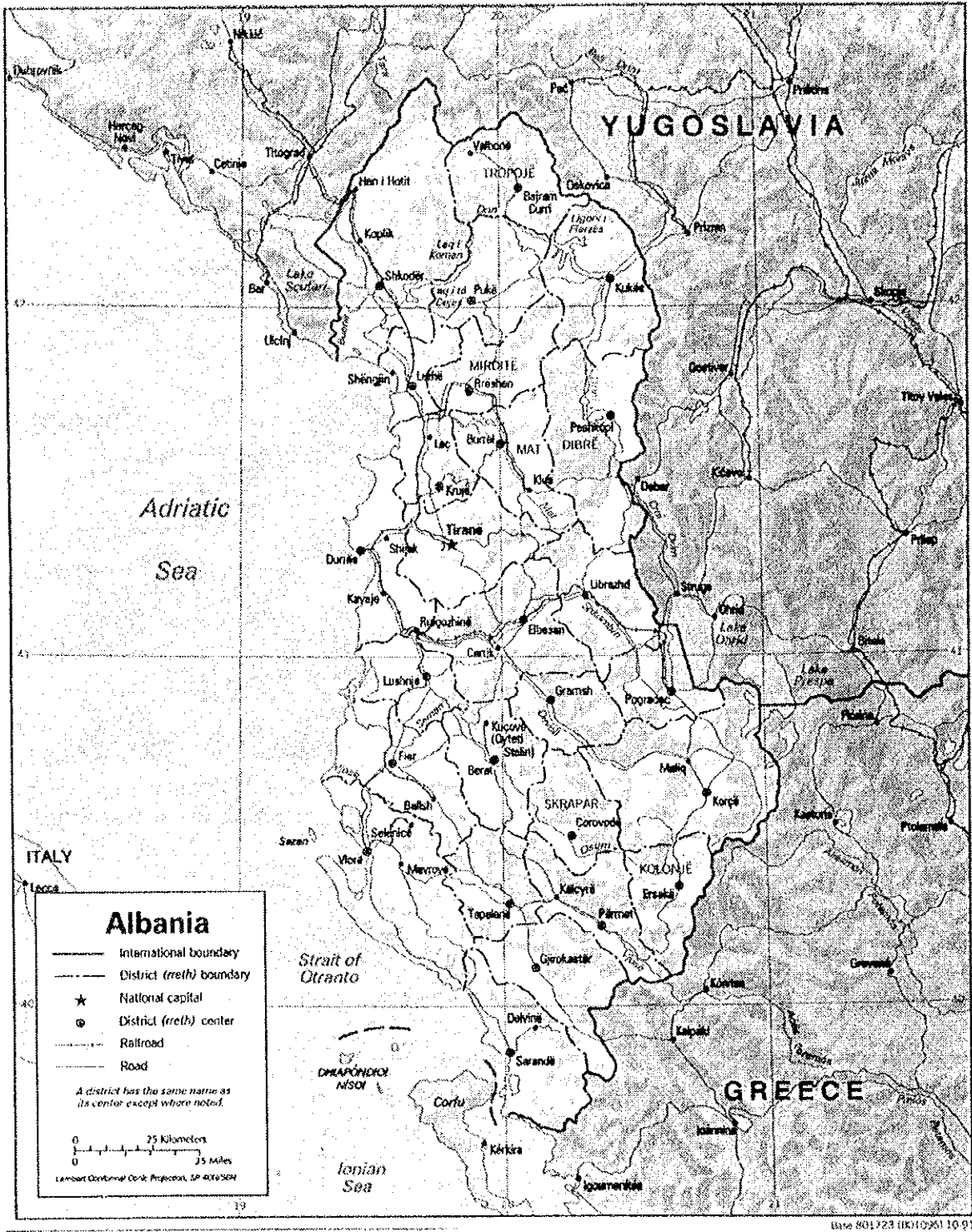


## Annex I

### Maps of Vlora, Durres and Lake Ohrit





Base 801723 (R1) (9x1) 10-91

## Annex II

### Photos of sites visited

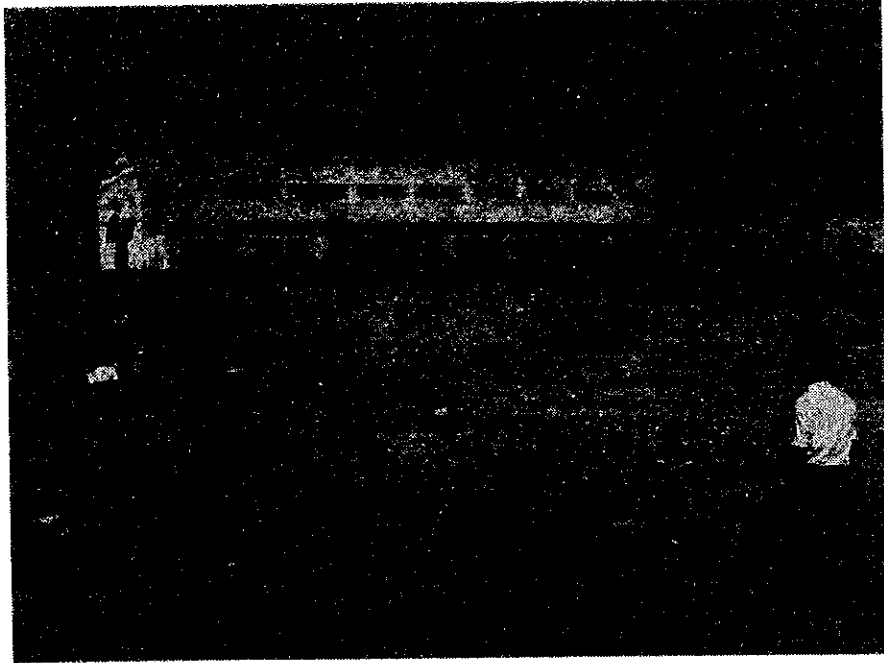


Figure 1 Porto Nuovo (Vlora) Fishing Port —Buildings on site



Figure 2 Trawlers in Porto Nuovo



Figure 3 Purse seiners in Porto Nuovo

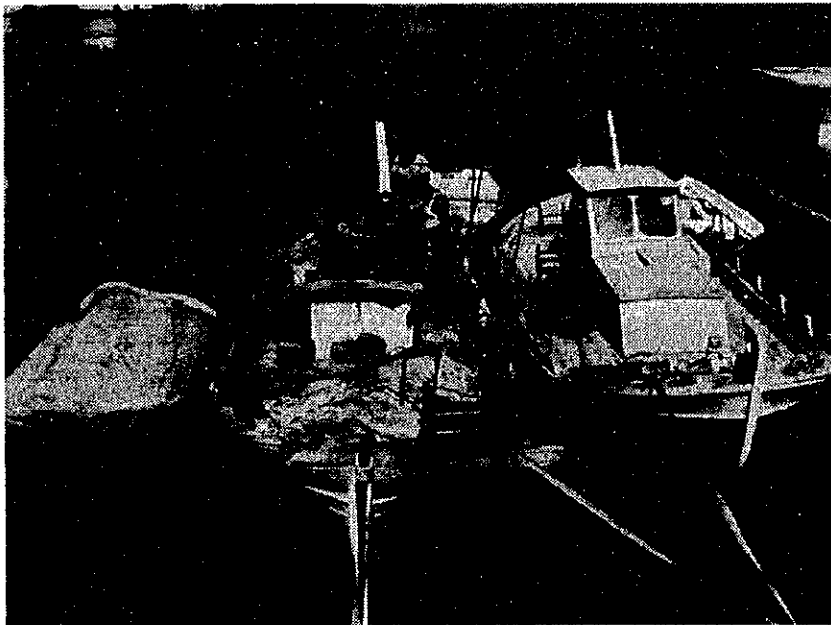


Figure 4 Trammel nets fishing boat

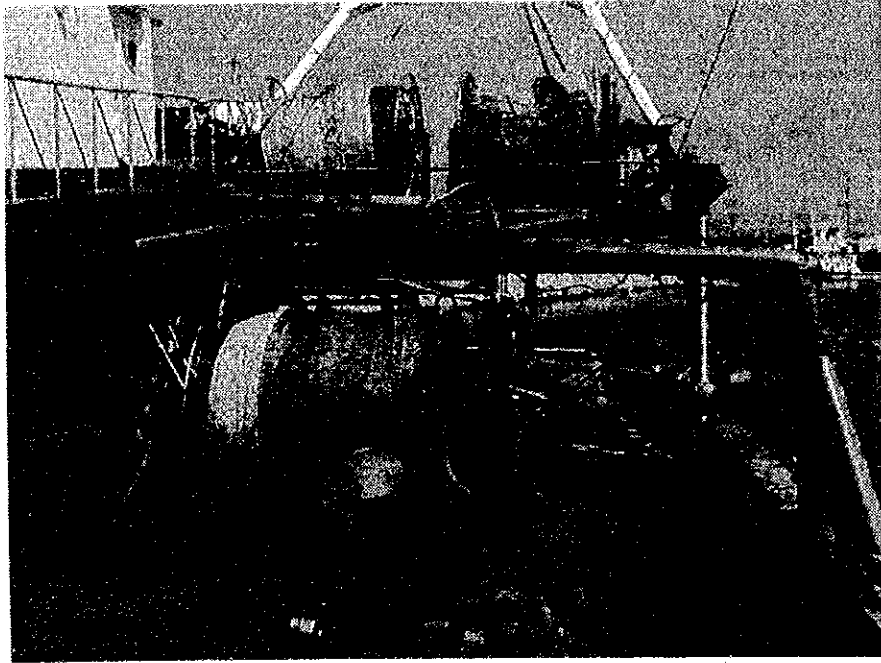


Figure 5 Deck layout of trawler equipped with hydraulic net drum and spare net reels

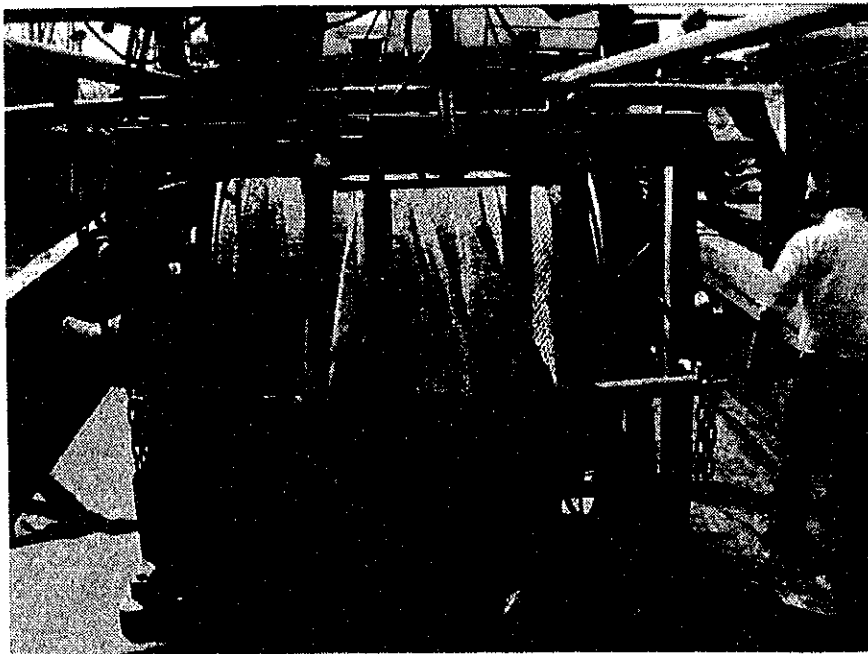


Figure 6 Close up view of net drum and sweep spreaders of trawler



Figure 7 Knotless netting 12 mm codend

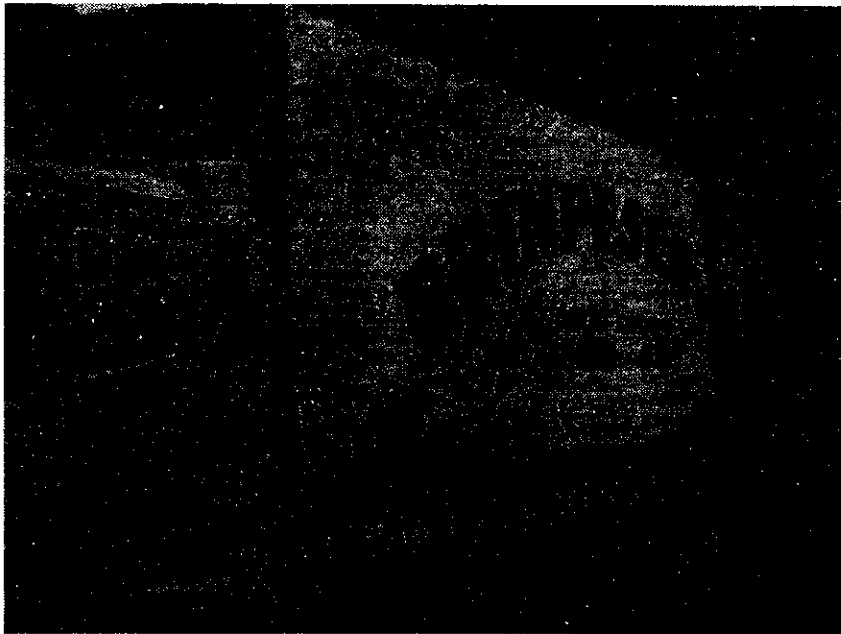


Figure 8 Truck used to export fish from Vlora fish packing company





Figure 9 Fish iced and boxed for export

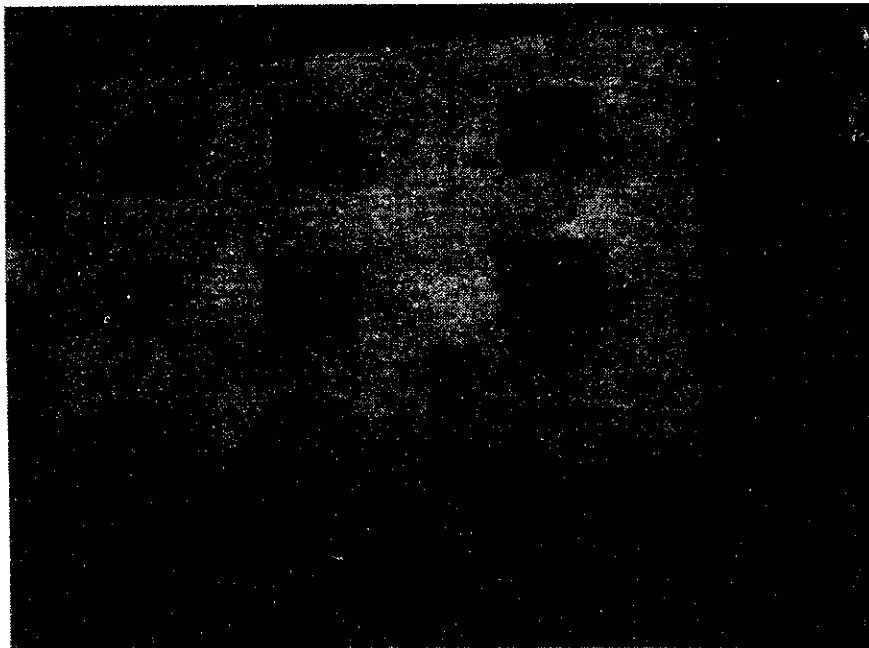


Figure 10 Durres Fishery Research Institute

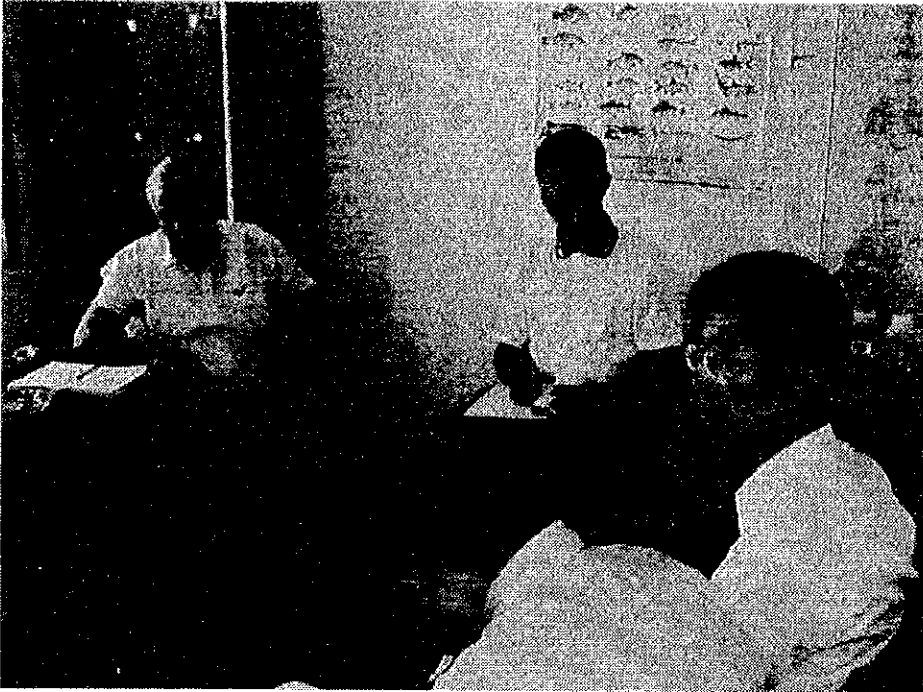


Figure 11 meeting in Durres Institute (Mevlan Balilaj, Sasaki, Mikuni)



Figure 12 Deputy Director (Kapitani) showing GIS maps of aquaculture sites prepared by EU PHARE project.



Figure 13 Site tour of Durres Fishing Port



Figure 14 Typical wooden stern trawlers moored in Durres port with small trammel net boats in foreground

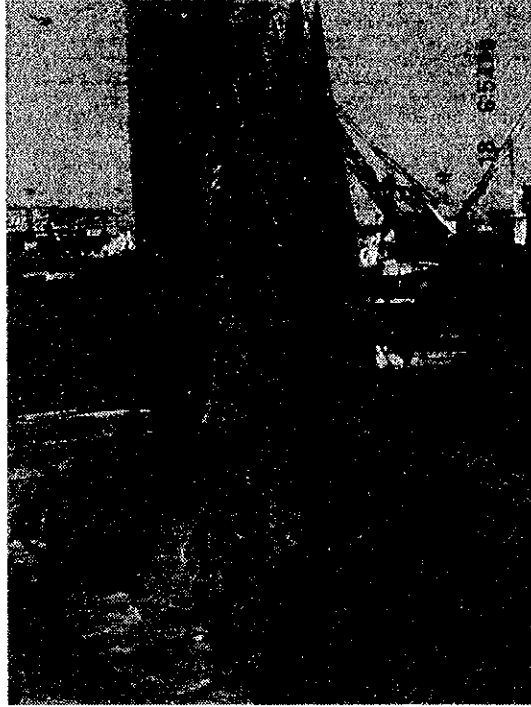


Figure 15 Otter trawl codend and ground chains



Figure 16 Stern area of trawler showing wooden otter boards and ground sweeps for herding demersal species

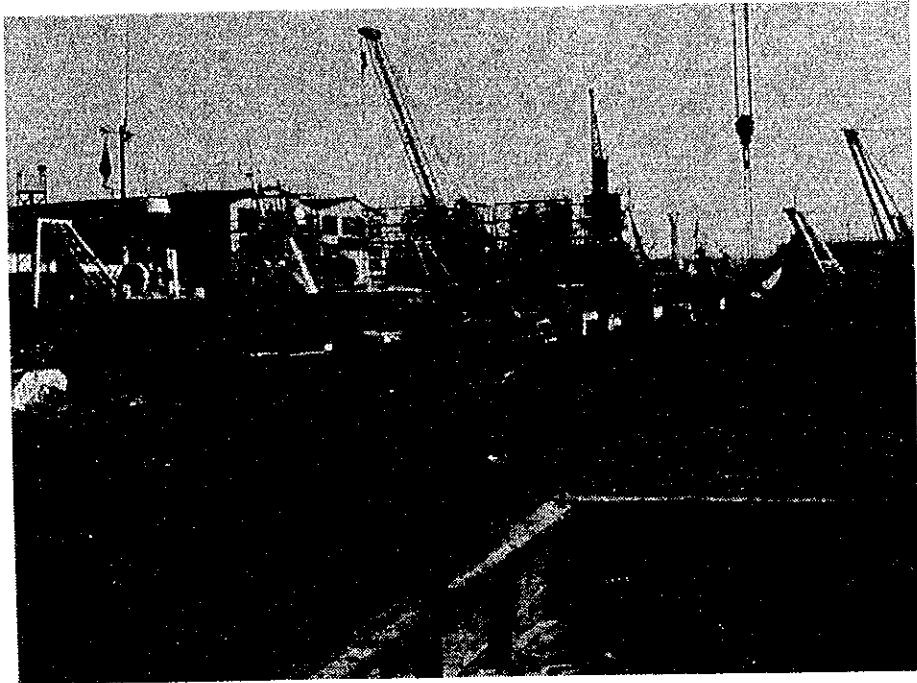


Figure 17 Typical examples of trawlers moored in Durres port

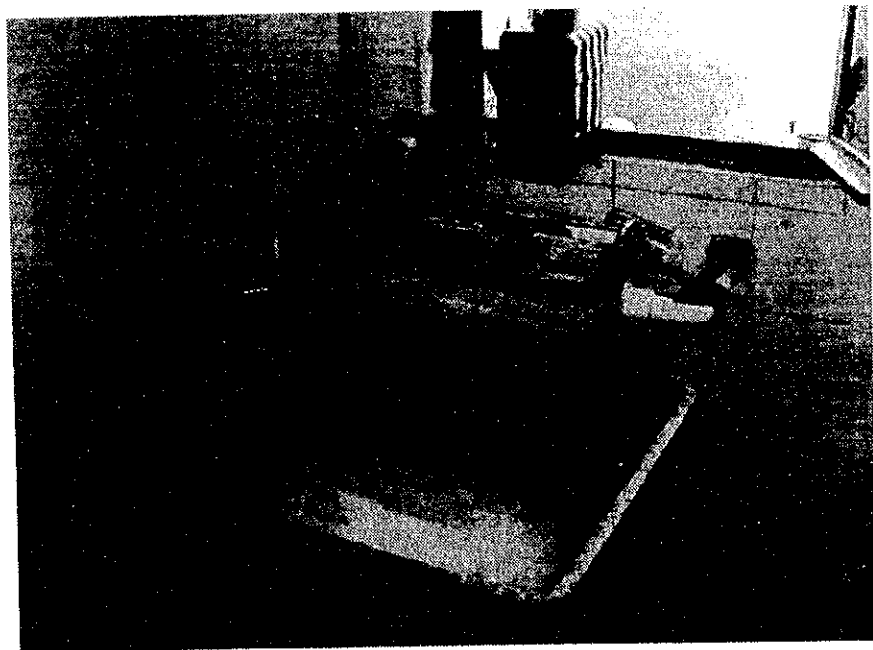


Figure 18 Drum ice prepared by export packer

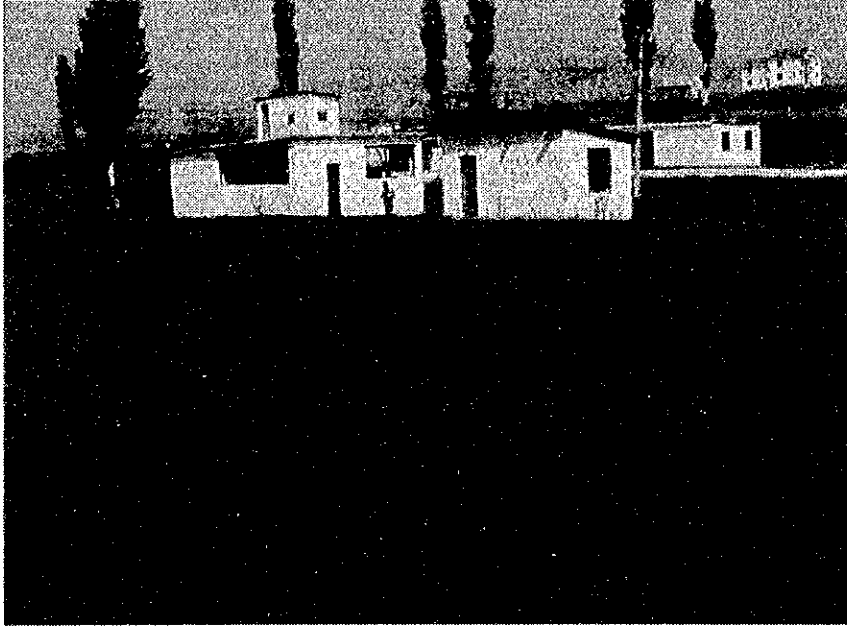


Figure 19 Trapize fish farm showing hatchery building and grow out ponds

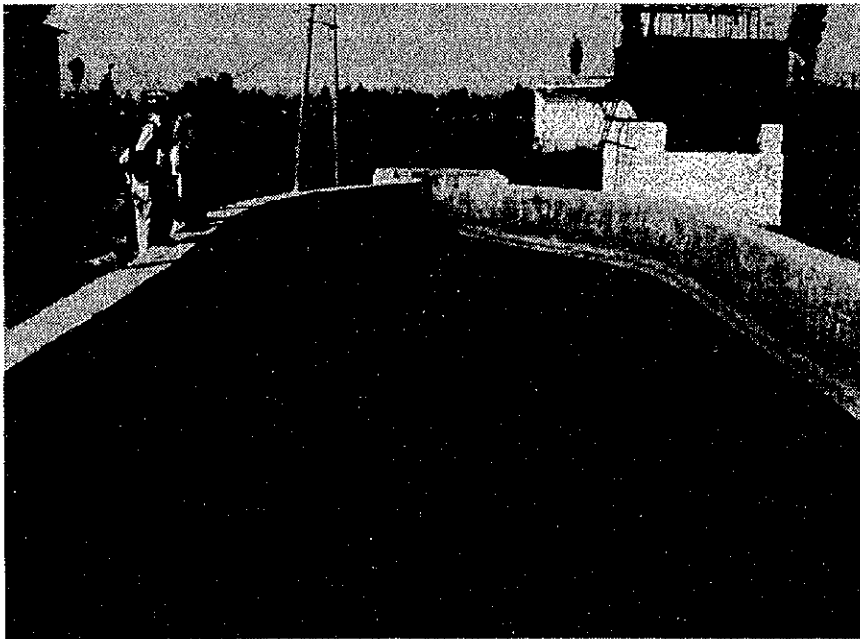


Figure 20 Trapize hatchery —concrete spawning tank

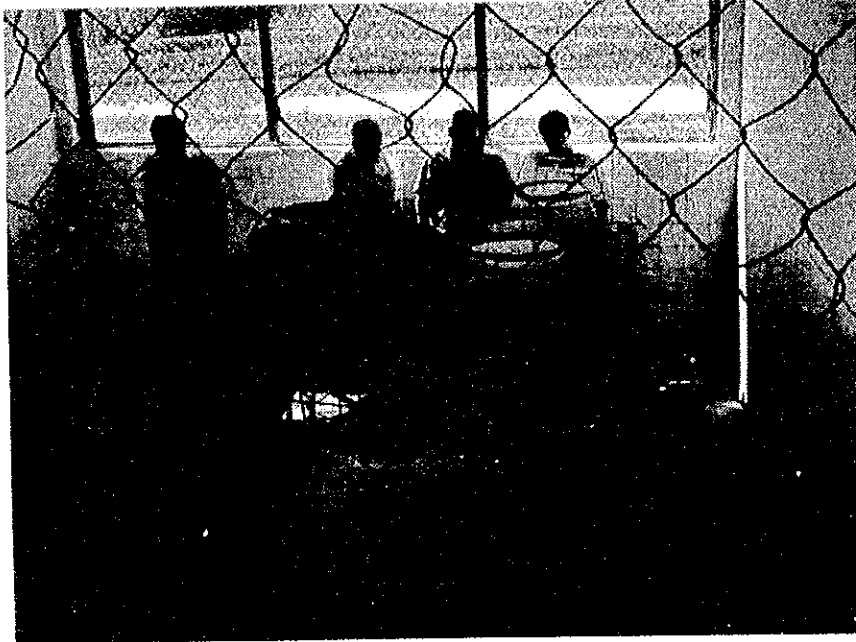


Figure 21 Trapize hatchery room

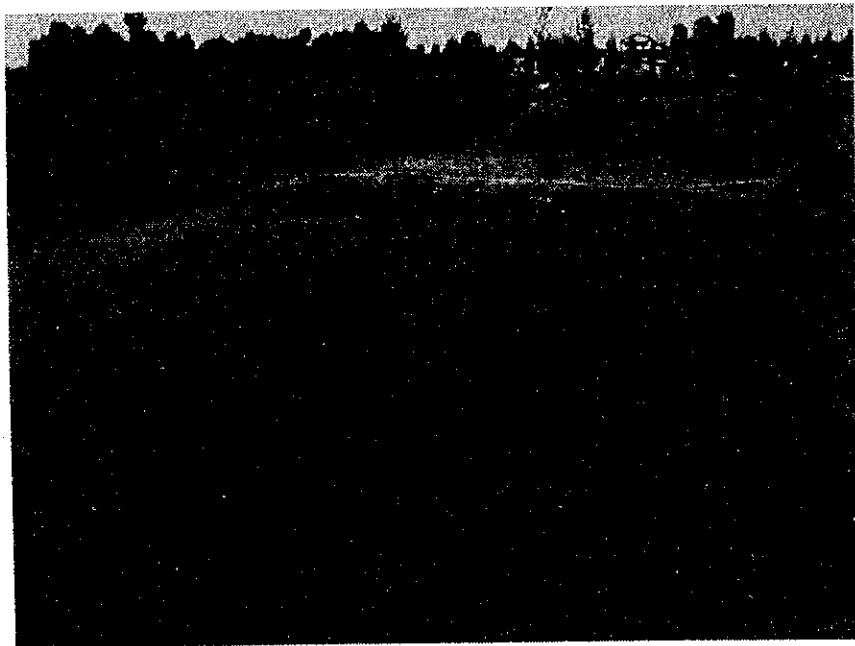


Figure 22 Trapize hatchery grow out ponds and site of tilapia project



Figure 23 Trapize hatchery showing gravity feed from irrigation dam



Figure 24 Irrigation reservoir adjacent to Trapize hatchery. Chinese carp fingerlings released into this reservoir are harvested by boat seine



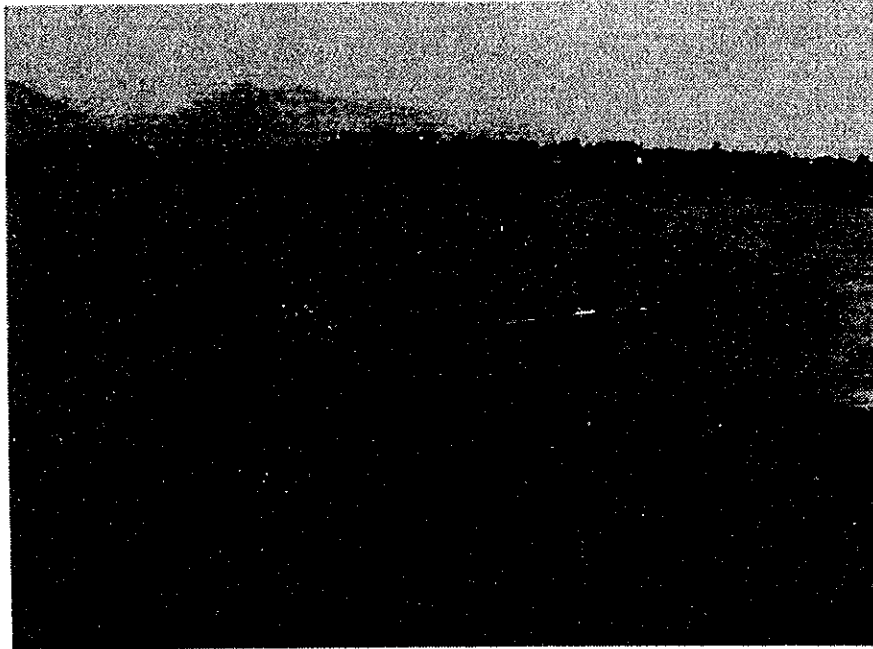


Figure 25 Boat seine used to harvest Chinese carp from Trapize irrigation reservoir

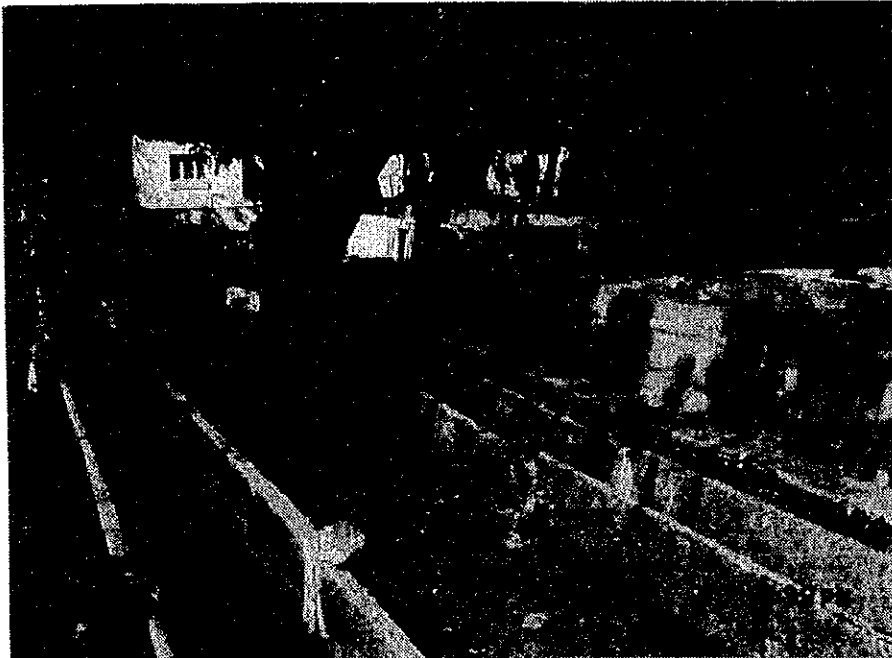


Figure 26 Lin hatchery for Koran trout



Figure 27 Lin hatchery facilities and brood stock holding area

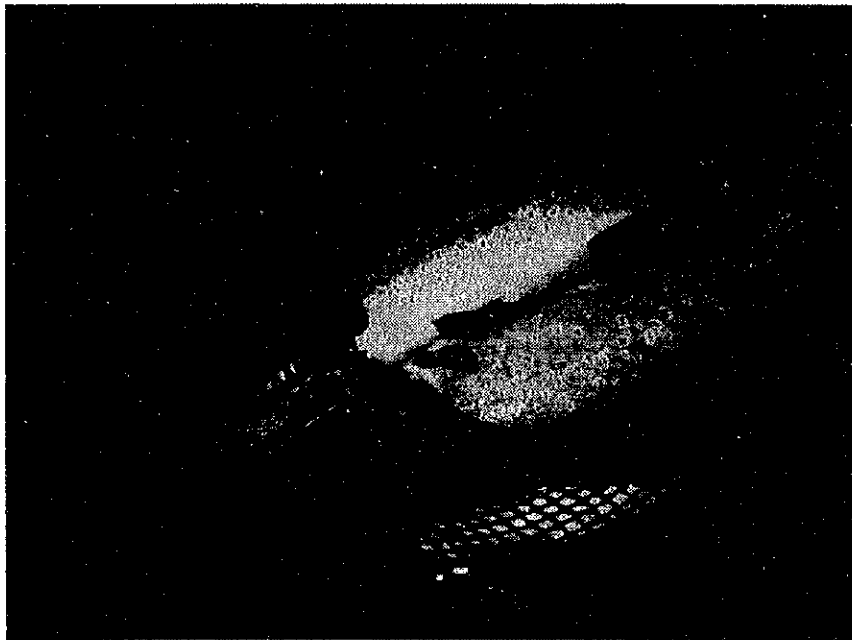


Figure 28 Koran brood stock

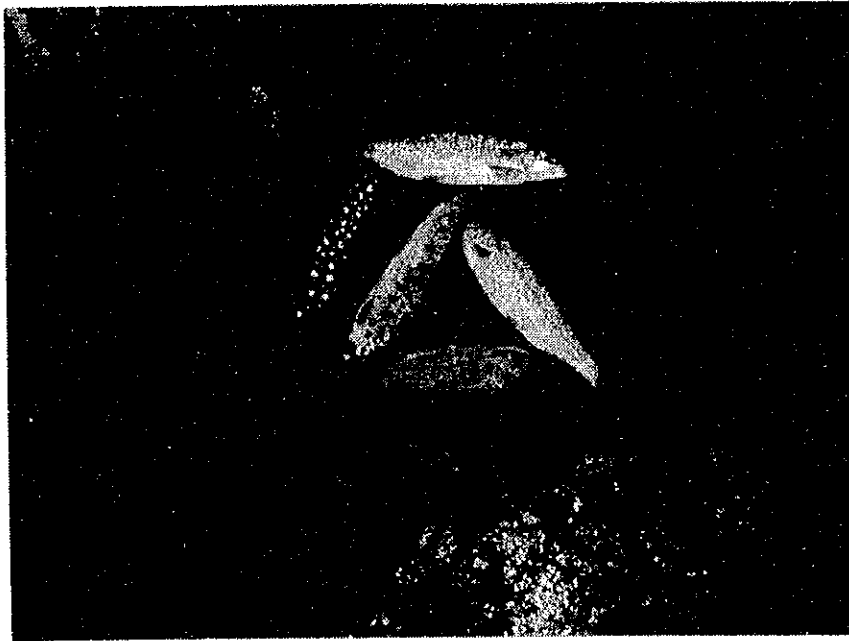


Figure 29 3 year old Koran trout held in hatchery



Figure 30 2-3 gram koran trout held in outside tanks

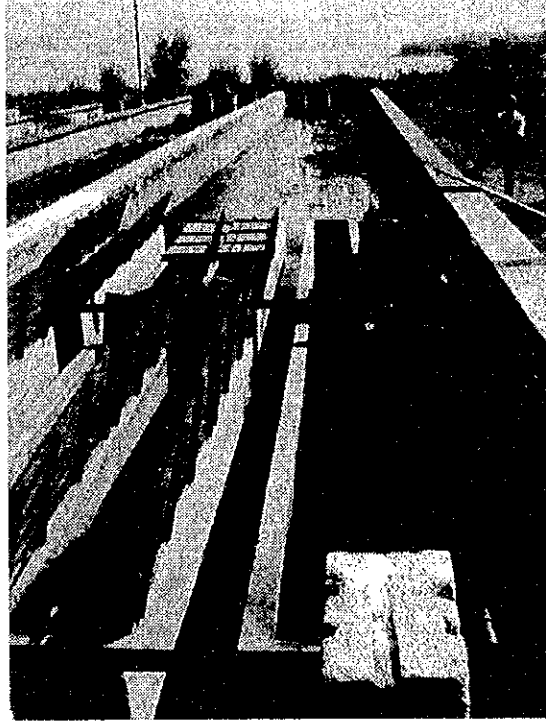


Figure 31 Raceways in Lin hatchery used for grow out of juveniles

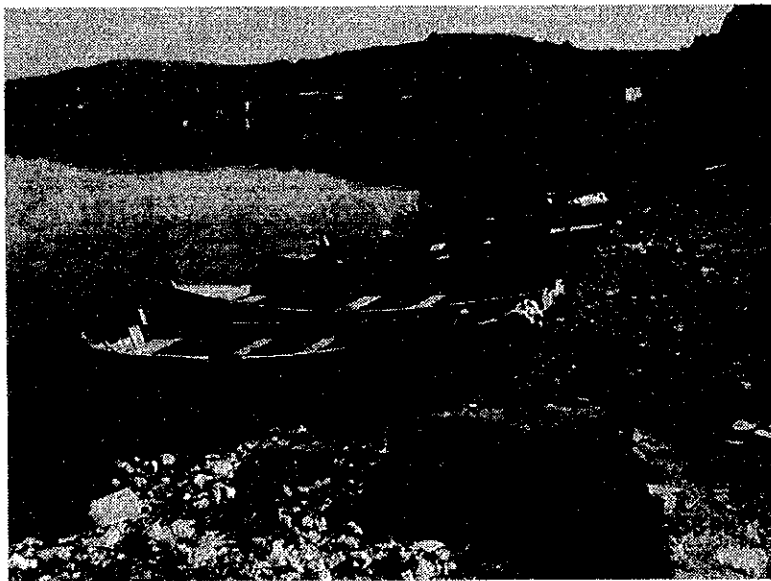


Figure 32 Wooden boats in Lin used for harvesting Koran trout by trammel net

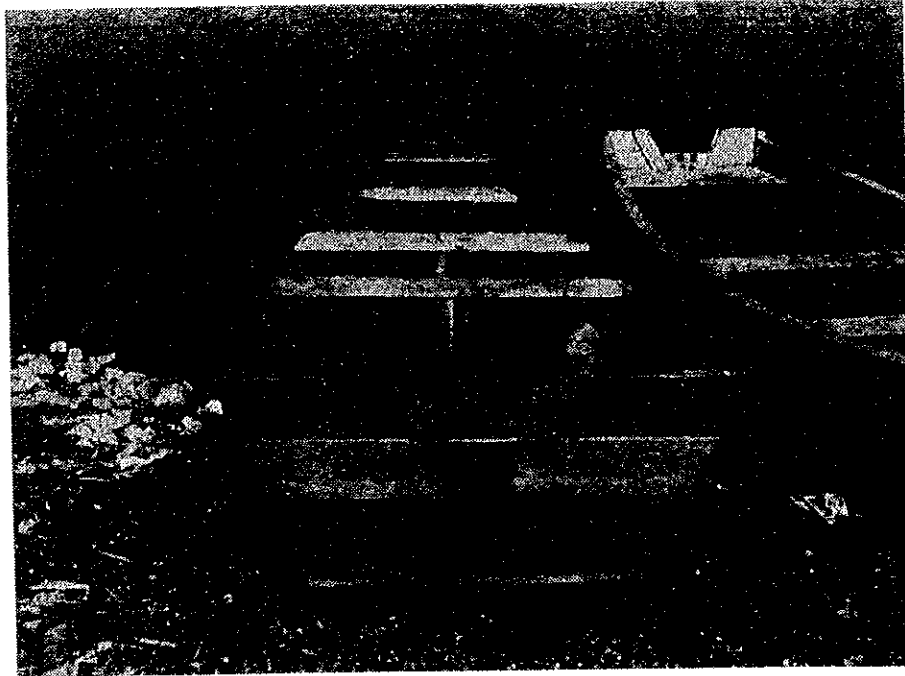


Figure 33 Close up view of wooden boat showing simple construction techniques



Figure 34 Landing fish and trammel nets from wooden boat near Lin

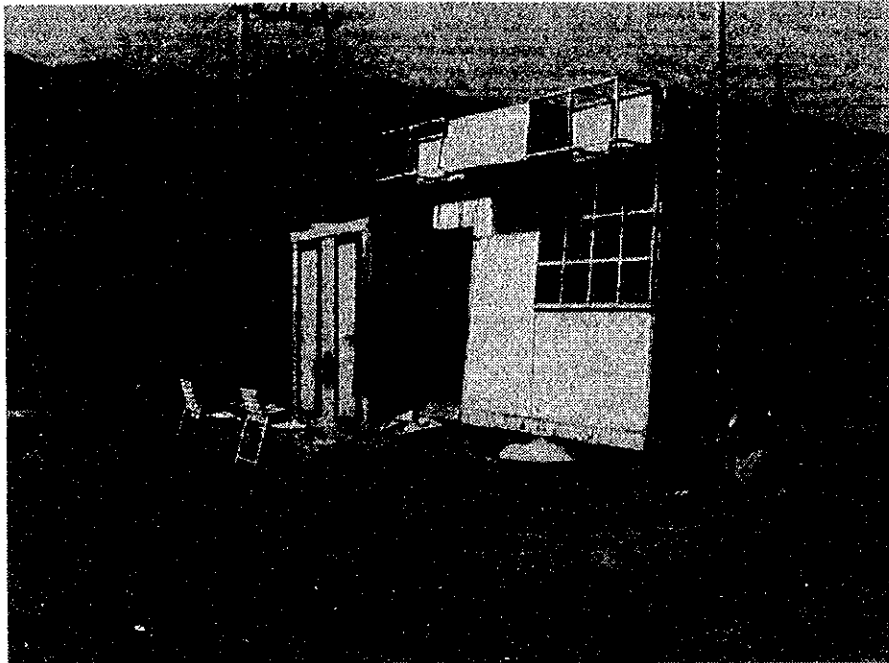


Figure 35 Small shop between Lin and Progradec constructing trammel nets



Figure 36 Fish for sale from roadside vendor located between Lin and Progradec. Fish size appears between 150g-600g.



Figure 37 Roadside vendor selling Koran trout directly to the general public

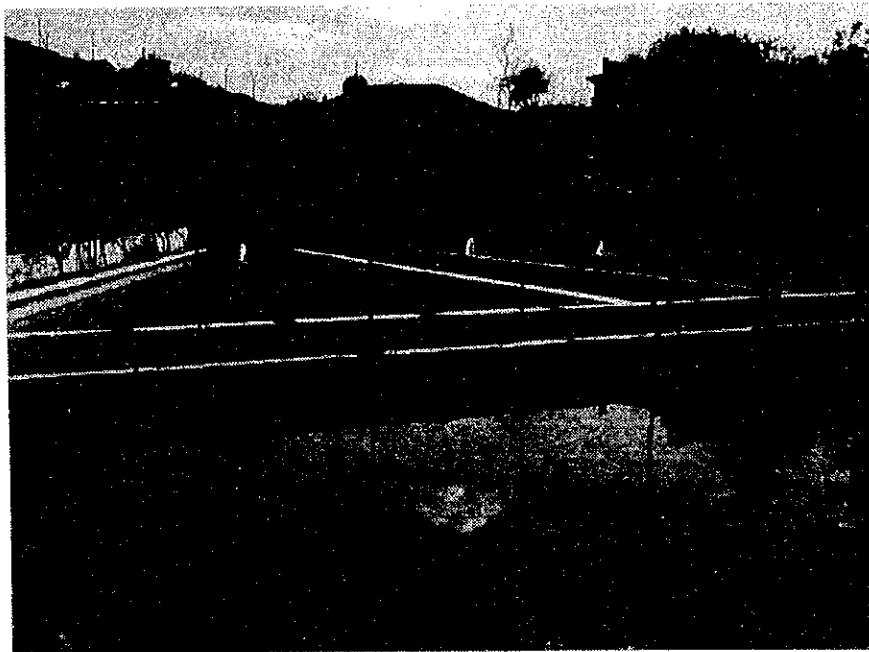


Figure 38 Private rainbow trout hatchery in Progradeč

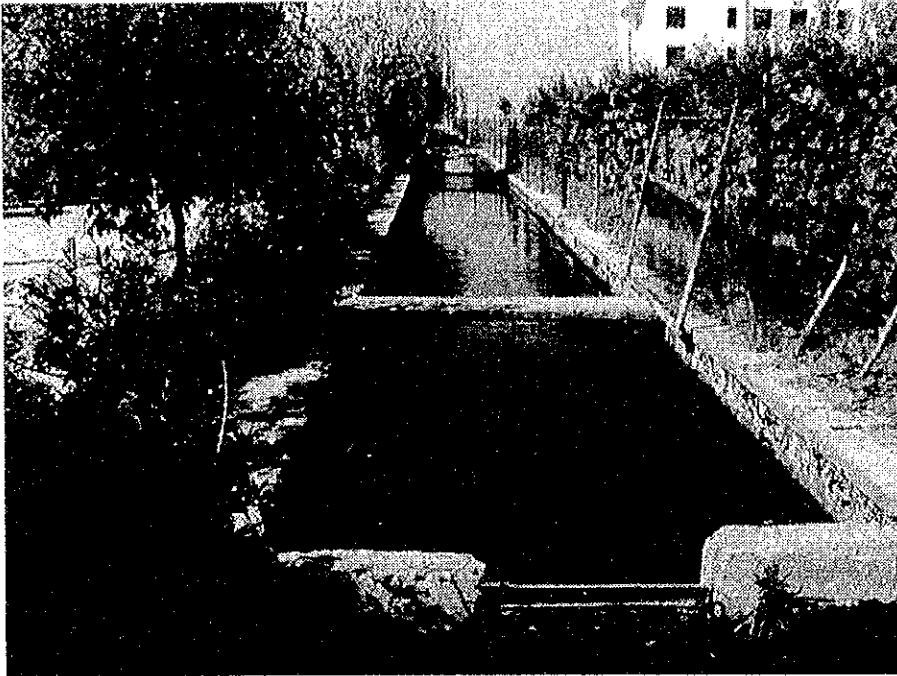


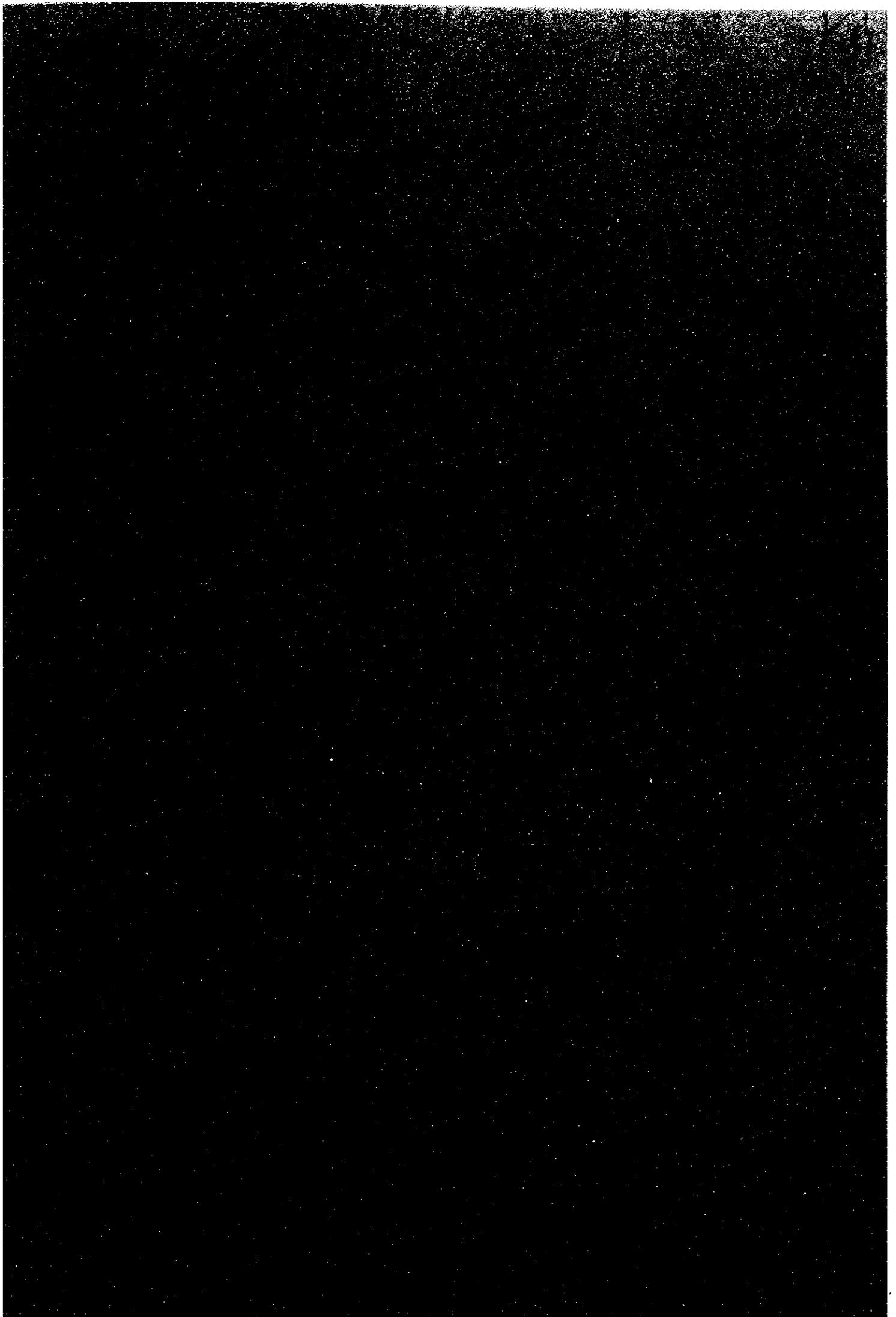
Figure 39 Private hatchery for carp that also operates restaurant and winery



Figure 40 Fish restaurant and hatchery in Progradec







JICA