

物理探查位置图 2

物理探査総括表 (Vertical Electric Sounding Points)

Area	Site	Point	AB/2	UTM-N	UTM-E	Elev.	Meas.Date
PK20	F3bis	F3bis-1	900	1277141	38282515	162	8/24
		F3bis-2	900	1277176	38282090	164	8/24
		F3bis-3	900	1277211	38281687	175	8/24
	F9bis	F9bis	900	1277008	38283183	160	8/26
	F10bis	F10bis	900	1277510	38282831	168	8/26
	FU2	FU2	900	1278354	38280185	135	8/26
Gegada	Z25	Z25-1	900	1259886	38294958	185	8/23
		Z25-2	900	1259989	38294653	180	8/22
		Z25-3	900	1250195	38294190	186	8/23
	Z2	Z2-1	900	1260282	38293803	186	8/22
		Z2-2	900	1260323	38293421	191	8/21
		Z2-3	900	1260470	38293105	178	8/21
	Z3	Z3-1	900	1258519	38292140	234	8/21
		Z3-2	900	1258537	38291625	242	8/19
		Z3-3	900	1258131	38291453	240	8/19
Godchabel	F3	F3-1	500	1268909	38297479	56	8/12
		F3-2	500	1269263	38297467	52	8/12
		F3-3	500	1269644	38297580	90	8/13
		F3-4	500	1270022	38297490	49	8/13
	F4	F4-1	650	1267165	38299831	85	8/14
		F4-2	650	1267200	38299342	82	8/14
		F4-3	650	1267208	38298940	64	8/16
		F4-4	650	1267141	38298538	80	8/16
	F5	F5-1	400	1268025	38301402	40	8/14
		F5-2	400	1268021	38300984	32	8/13
		F5-3	400	1267988	38300574	36	8/20
		F5-4	400	1268150	38300208	38	8/15
		E4	E4	300	1275449	38296119	19
Nagad	E5	E5-1	300	1275209	38296709	24	8/5
		E5-2	300	1275116	38296977	24	8/5
	E7	E7	300	1274577	38296575	30	8/5
	E11	E11	300	1273320	38296368	36	8/27
	RG1	RG1	300	1276920	38296264	24	8/27
	RG2	RG2	300	1276263	38296041	30	8/27
Sea Water Invasion Survey	A	A-1	300	1275390	38299839	7	8/9
		A-2	300	1274882	38299364	8	8/9
		A-3	300	1274320	38298876	9	8/10
		A-4	300	1274067	38298088	23	8/10
		A-5	300	1273774	38297681	24	8/10
		A-6	300	1273133	38298148	39	8/10
	B	B-1	300	1273224	38302748	2	8/8
		B-2	300	1272752	38302397	3	8/8
		B-3	300	1272452	38302050	4	8/8
		B-4	300	1272129	38301678	8	8/8
		B-5	300	1271464	38301437	10	8/8
		B-6	300	1271256	38300717	25	8/9
		B-7	300	1270811	38300150	20	8/9
	C	C-1	300	1270716	38305692	3	8/7
		C-2	300	1270268	38305399	5	8/6
		C-3	300	1269811	38304318	10	8/6
		C-4	300	1269488	38303919	15	8/6
		C-5	300	1268907	38303557	12	8/7
		C-6	300	1268483	38303513	15	8/7
		C-7	300	1268129	38303851	18	8/7
C-8		300	1268162	38302991	30	8/7	

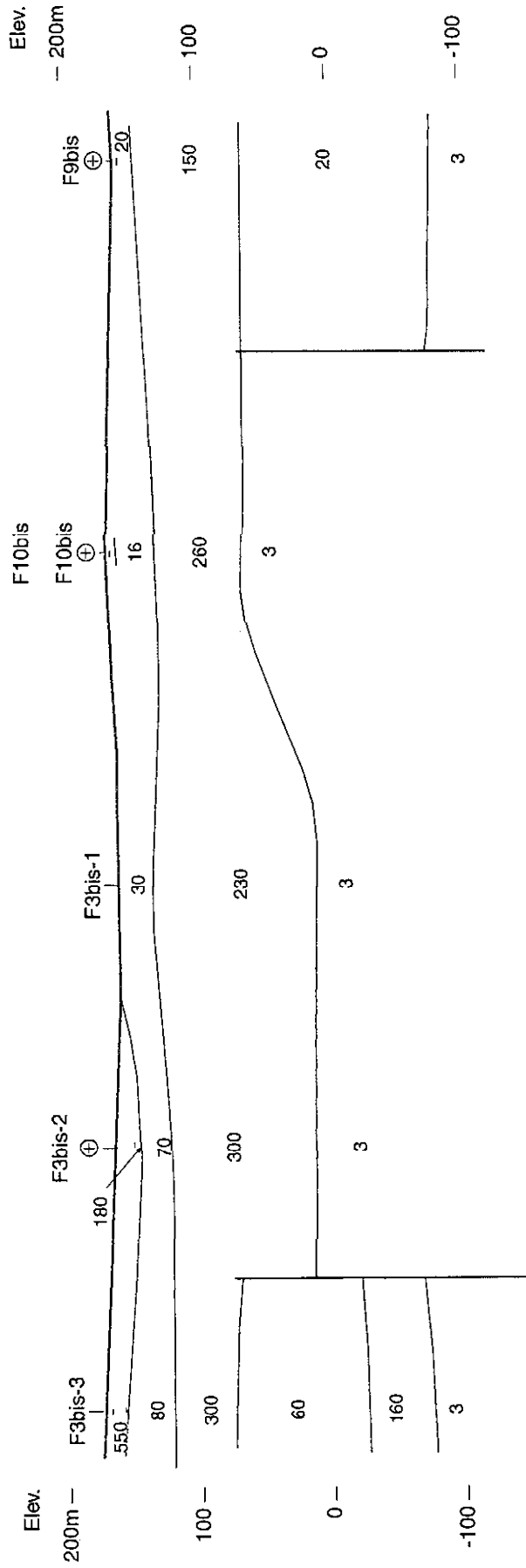
(Note) AB/2 : AB/2 (m) Meas.Date : Measured Date
Elev. : Elevation (m)

PK20

→ E

← W

F3bis F10bis F9bis

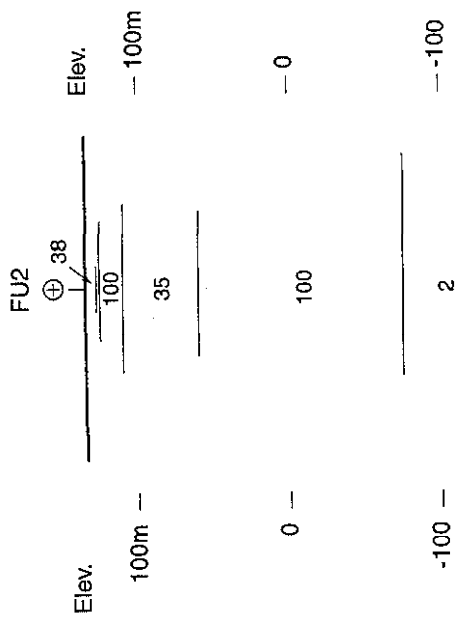


Legend

- Geophysical Survey Point
- E5-1 ⊕ Planned Drilling Site
- Ground Surface
- 130 Analyzed Resistivity (Ω-m)
- 40 Resistivity Boundary
- Elev. : Elevation (m)

PK20

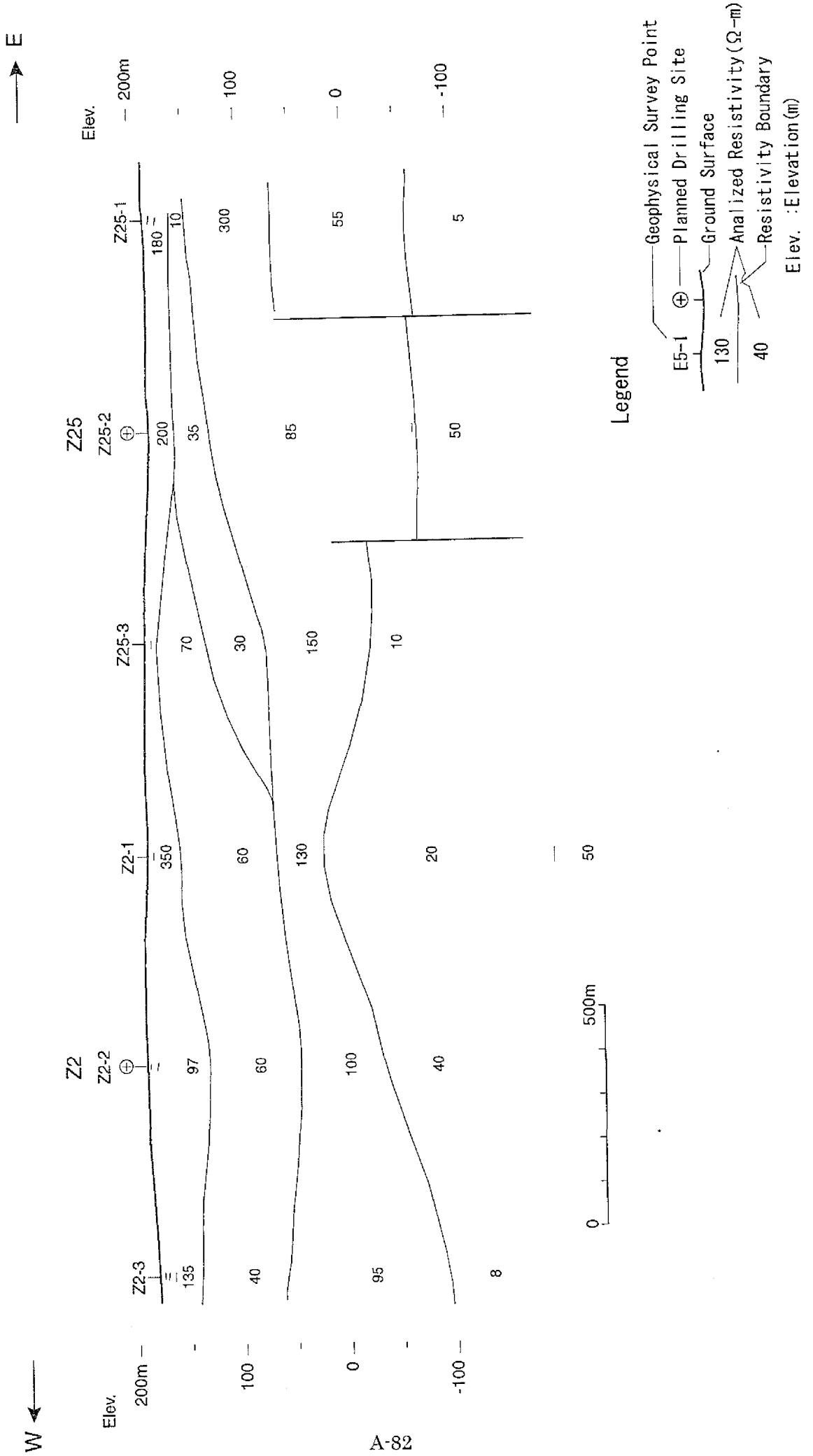
W ← → E



Legend

- Geophysical Survey Point
- Planned Drilling Site
- Ground Surface
- 130
- 40
- Analyzed Resistivity ($\Omega\text{-m}$)
- Resistivity Boundary
- Elev. : Elevation (m)

Gegada

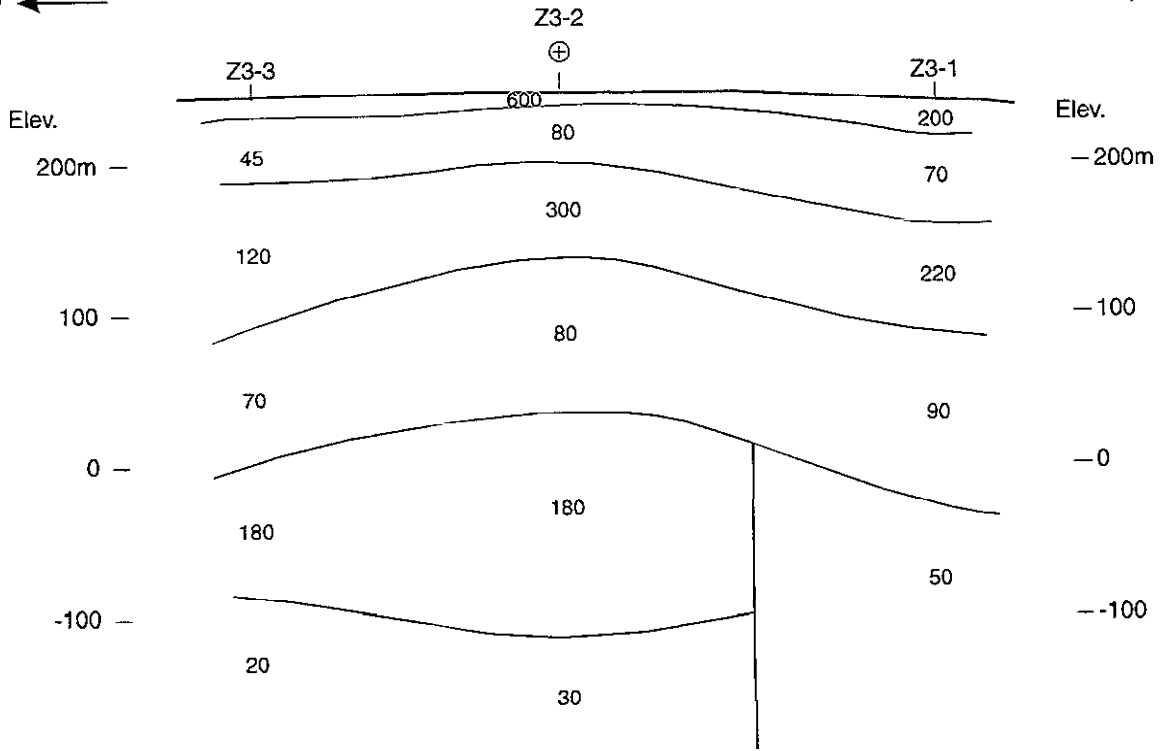


Gegada

Z3

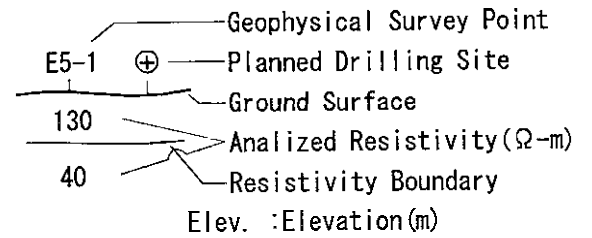
W ←

→ E



0 500m

Legend

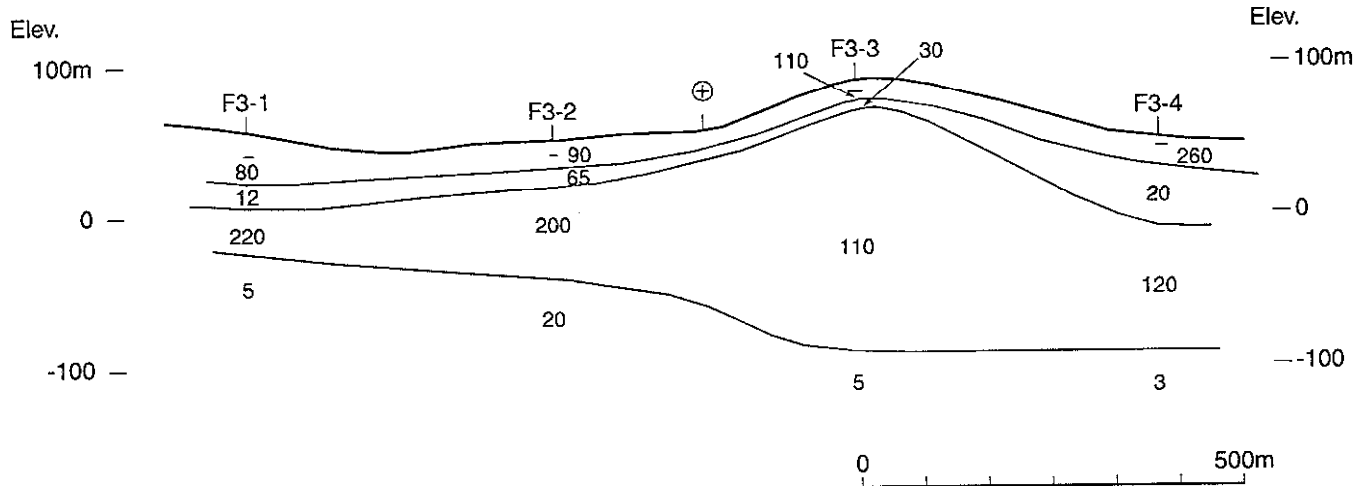


Godchabel

F3

S ←

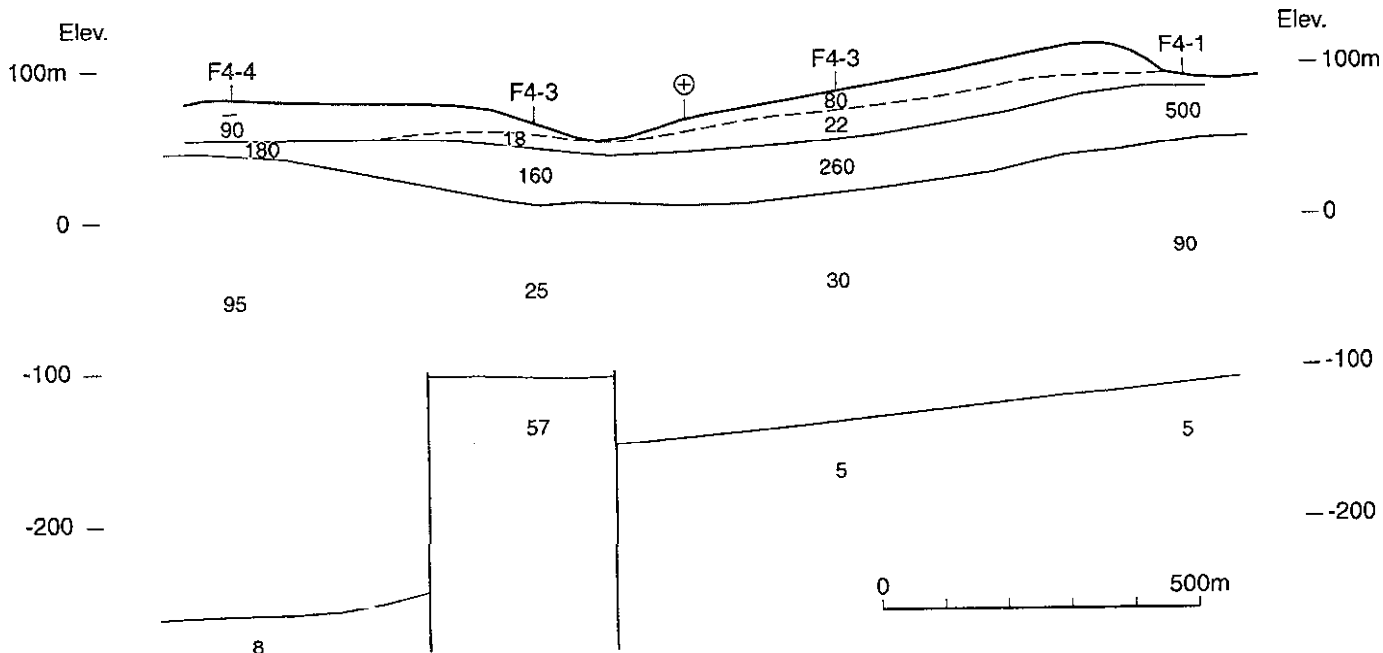
→ N



F4

W ←

→ E



Legend

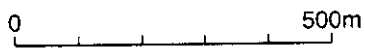
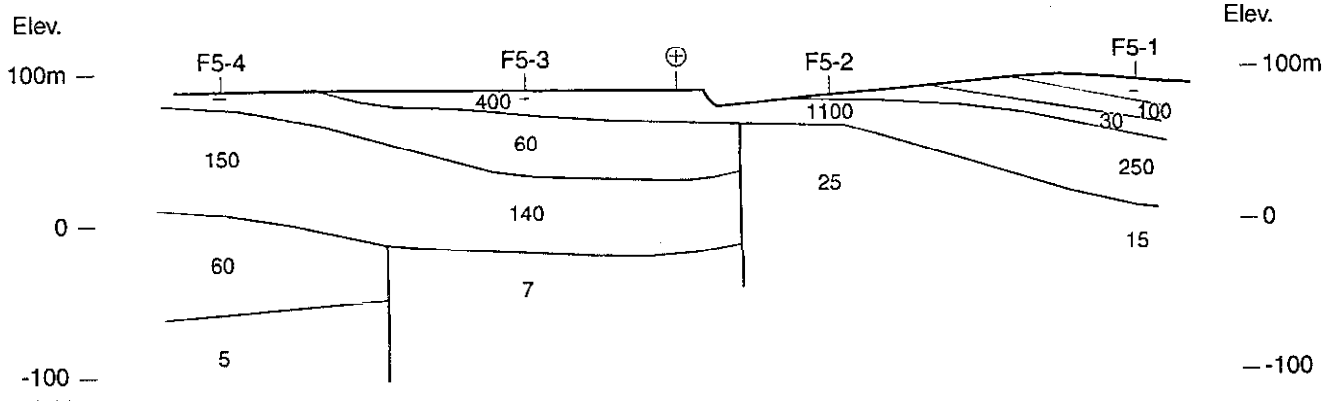
- Geophysical Survey Point
- E5-1 ⊕ — Planned Drilling Site
- Ground Surface
- 130 — Analyzed Resistivity (Ω -m)
- 40 — Resistivity Boundary
- Elev. : Elevation (m)

Godchabel

F5

W ←

→ E

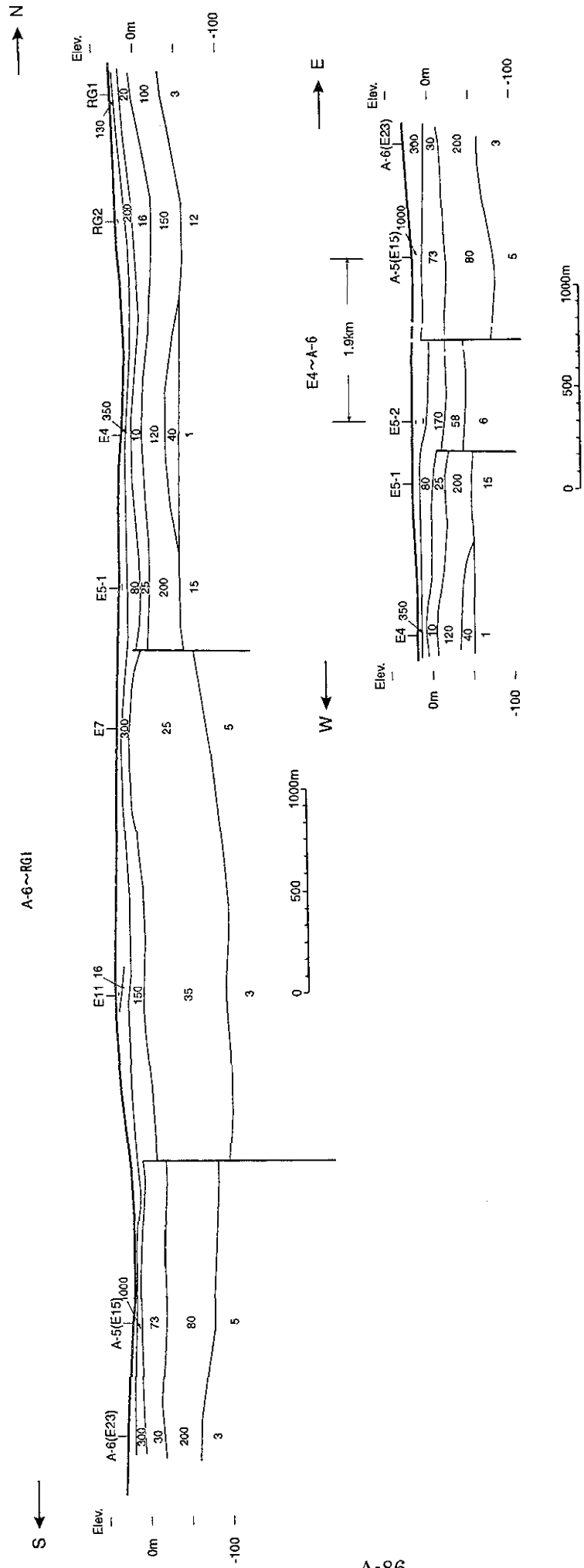


Legend

- Geophysical Survey Point
- E5-1 ⊕ — Planned Drilling Site
- Ground Surface
- 130 — Analyzed Resistivity ($\Omega\text{-m}$)
- 40 — Resistivity Boundary
- Elev. : Elevation (m)

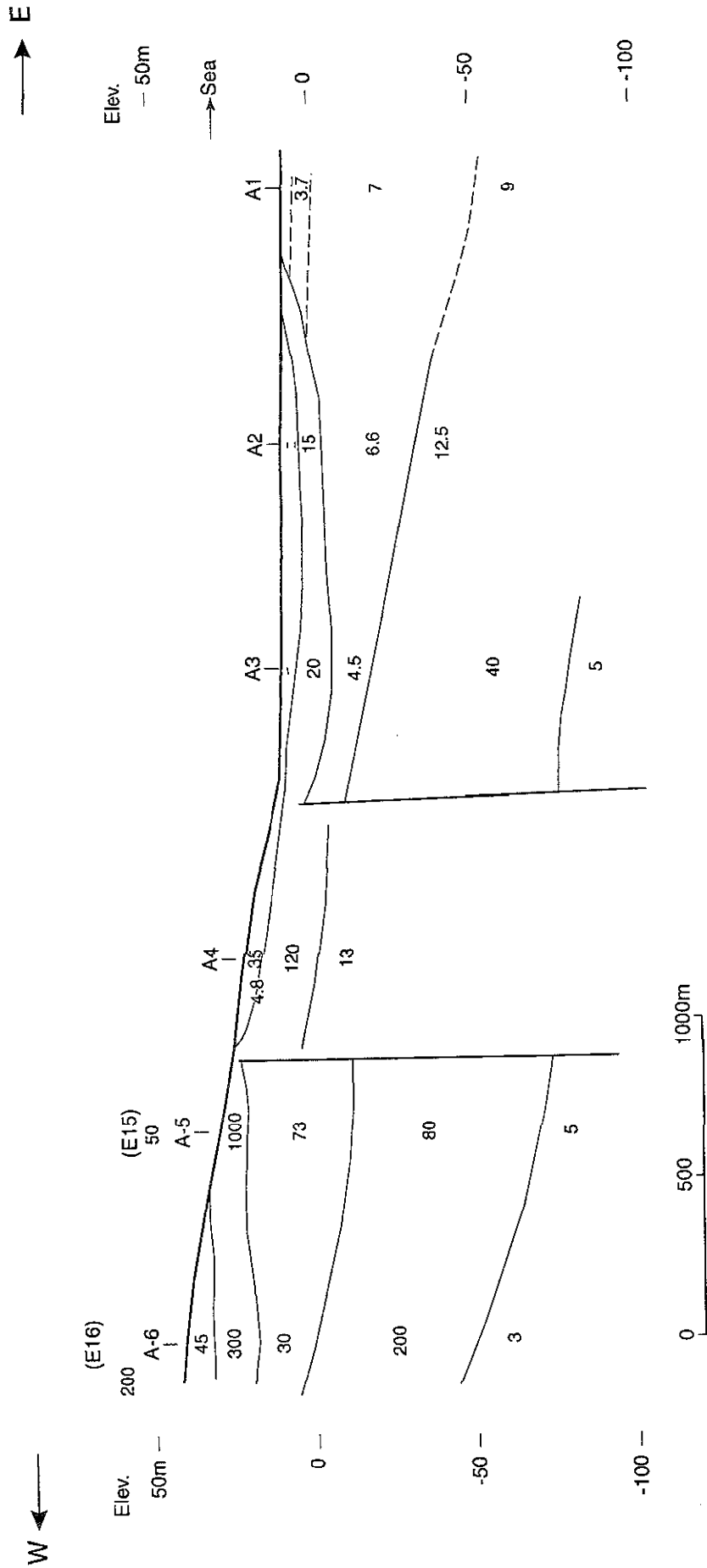
Nagad

A-6~RG1



- Legend**
- Geophysical Survey Point
 - Planned Drilling Site
 - Ground Surface
 - 130 Analyzed Resistivity($\Omega\cdot m$)
 - 40 Resistivity Boundary
 - Elev. : Elevation(m)

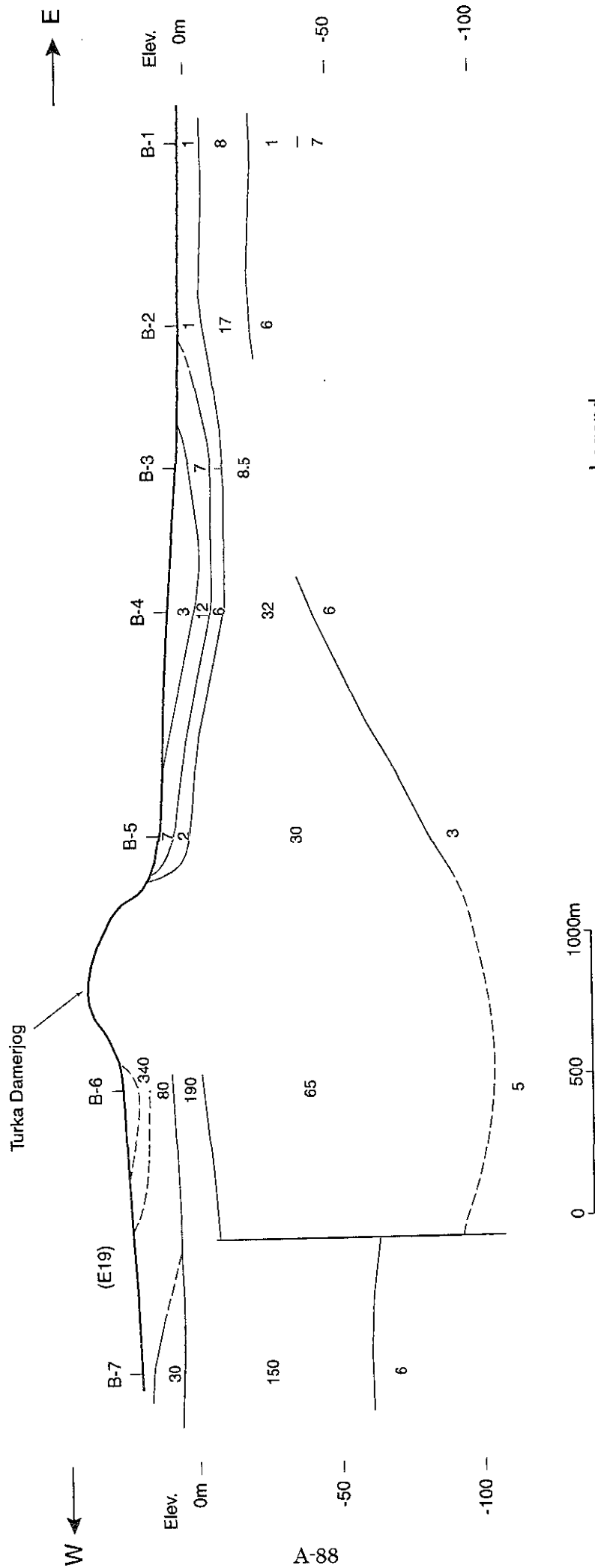
A Line



Legend

- ⊕ Geophysical Survey Point
- ⊕ Planned Drilling Site
- Ground Surface
- Analyzed Resistivity (Ω -m)
- Resistivity Boundary
- Elev. : Elevation (m)

B Line



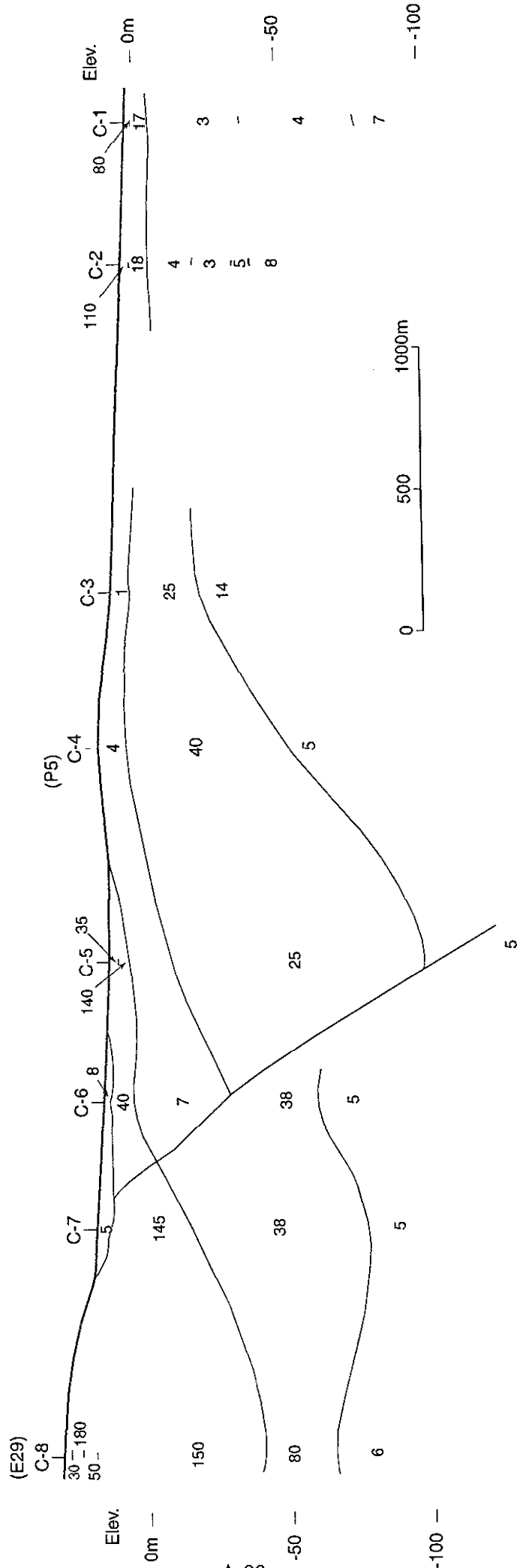
Legend

- ⊕ Geophysical Survey Point
- ⊕ Planned Drilling Site
- Ground Surface
- - - Analyzed Resistivity (Ω-m)
- Resistivity Boundary
- Elev. :Elevation(m)

C Line

→ E. Sea

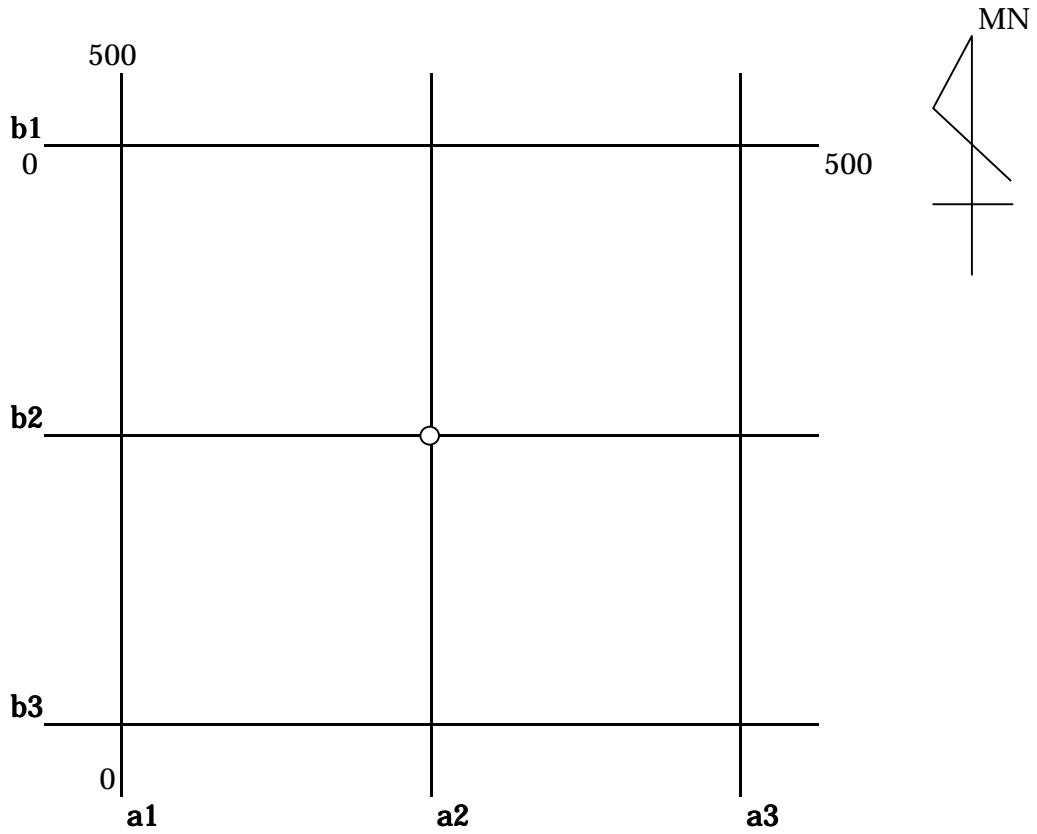
← W



Legend

- Geophysical Survey Point
- ⊕ Planned Drilling Site
- Ground Surface
- Analyzed Resistivity (Ω-m)
- - - Resistivity Boundary
- : Elevation (m)

VLF Lines & Coordinate



Line length : 500m
 Lines distance : 200m
 Points distance : 20m

	<u>F3</u>	<u>F4</u>	<u>F5</u>	<u>Z25</u>	<u>Z2</u>	<u>Z3</u>	<u>Obs</u>
a1 :	0001	0011	0021	0031	0041	0051	0061
a2 :	0201	0211	0221	0231	0241	0251	0261
a3 :	0401	0411	0421	0431	0441	0451	0461
b1 :	0002	0012	0022	0032	0042	0052	0062
b2 :	0202	0212	0222	0232	0242	0252	0262
b3 :	0402	0412	0422	0432	0442	0452	0462

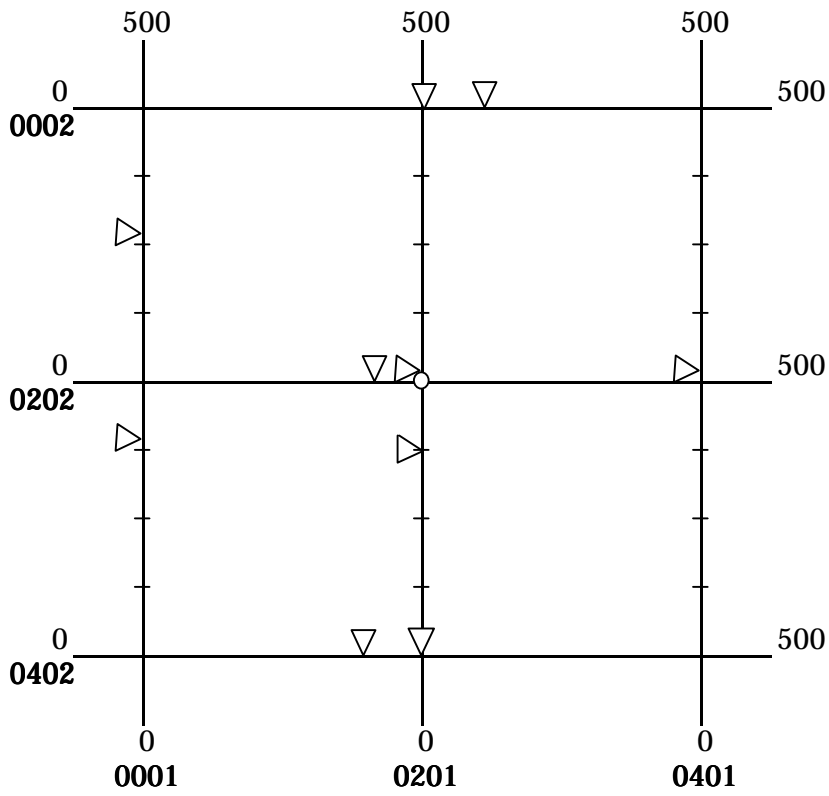
○ : Programmed Drilling Site

VLF Measurement Data

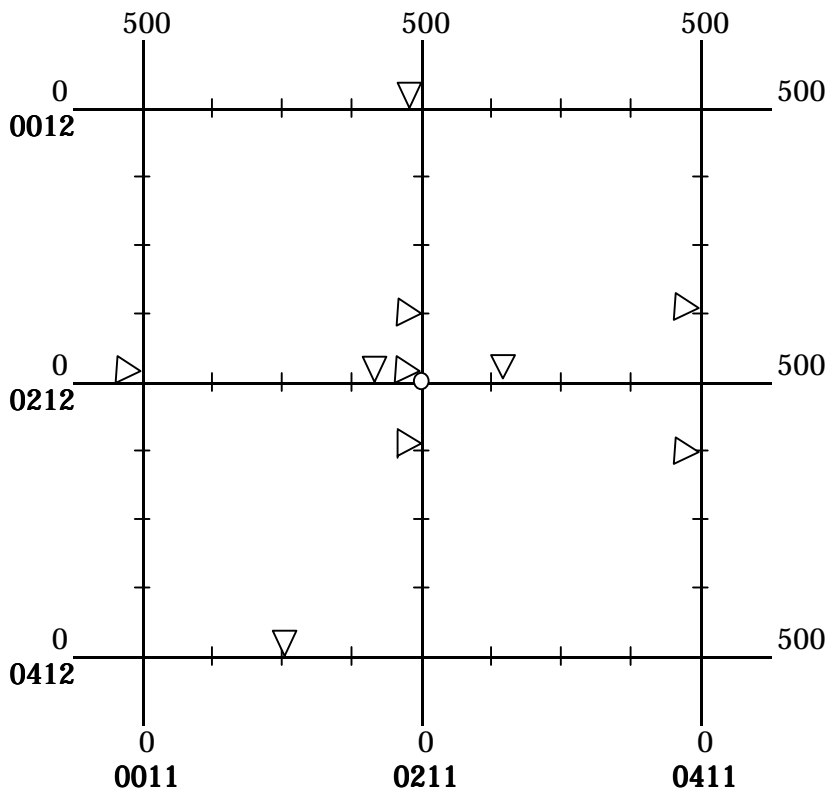
Area	Site	Prof.	Direc.	Lng.	UTME/S	UTMN/S	UTME/E	UTMN/E	Meas.Date	VLF
Godchabel	F3	0001	NS	500	297256	1269091	297262	1269593	2000/8/13	19.8
		0201	NS	500	297460	1269089	297463	1269590	2000/8/13	19.8
		0401	NS	500	297657	1269086	297655	1269589	2000/8/13	19.8
		0002	EW	500	297203	1269541	297708	1269545	2000/8/13	18.1
		0202	EW	500	297201	1269335	297705	1269342	2000/8/13	19.8
		0402	EW	500	297193	1269138	297698	1269135	2000/8/31	20.3
	F4	0011	NS	520	298905	1266956	298904	1267480	2000/8/29	19.7
		0211	NS	520	299115	1266959	299110	1267494	2000/8/29	19.7
		0411	NS	500	299310	1266962	299320	1267483	2000/8/29	19.7
		0012	EW	500	298851	1267435	299353	1267438	2000/8/30	20.5
		0212	EW	500	298856	1267230	299358	1267236	2000/8/30	19.8
		0412	EW	500	298862	1267036	299362	1267042	2000/8/29	19.8
	F5	0021	NS	500	300568	1267729	300568	1268234	2000/8/30	24.9
		0221	NS	500	300772	1267742	300778	1268241	2000/9/5	15.0
		0421	NS	500	300974	1267747	301972	1268245	2000/9/5	17.6
		0022	EW	500	300510	1268180	301008	1268186	2000/9/5	20.5
		0222	EW	500	300516	1267990	301018	1267983	2000/8/31	19.7
		0422	EW	500	300508	1267786	301011	1267789	2000/8/31	19.7
Gegada	Z25	0031	NS	500	294400	1259763	294418	1260266	2000/9/1	19.8
		0231	NS	500	294600	1259757	294606	1260261	2000/9/1	19.8
		0431	NS	500	294802	1259751	294812	1260259	2000/9/1	19.8
		0032	EW	500	294359	1260208	294863	1260213	2000/9/5	21.1
		0232	EW	500	294366	1260002	294861	1260013	2000/9/5	19.8
		0432	EW	500	294363	1259800	294865	1259810	2000/9/5	20.9
	Z2	0041	NS	500	293274	1260050	293269	1260562	2000/9/4	18.1
		0241	NS	500	293377	1260045	293381	1260554	2000/9/4	18.1
		0441	NS	500	293599	1260040	293590	1260568	2000/9/4	20.9
		0042	EW	500	293131	1260514	293635	1260503	2000/9/4	20.9
		0242	EW	500	293120	1260305	293634	1260283	2000/9/4	20.9
		0442	EW	500	293127	1260113	293633	1260080	2000/9/4	20.9
	Z3	0051	NS	500	291444	1258120	291289	1258730	2000/9/2	19.8
		0251	NS	500	291660	1258283	291609	1258734	2000/9/2	19.8
		0451	NS	500	291875	1258270	291847	1258858	2000/9/2	19.8
		0052	EW	500	291379	1258715	291860	1258328	2000/9/2	20.9
		0252	EW	500	291390	1258537	291868	1258320	2000/9/2	20.9
		0452	EW	500	291357	1258302	291855	1258325	2000/9/2	20.9

(Note) Prof. : Profile
 Direc. : Direction
 Leng. : Length(m)
 UTME/S : UTME/000
 UTME/E : UTME/500
 UTMN/S : UTMN/000
 UTMN/E : UTMN/500
 Meas.Date : Measured Date
 VLF : VLF (kHz)

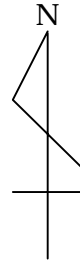
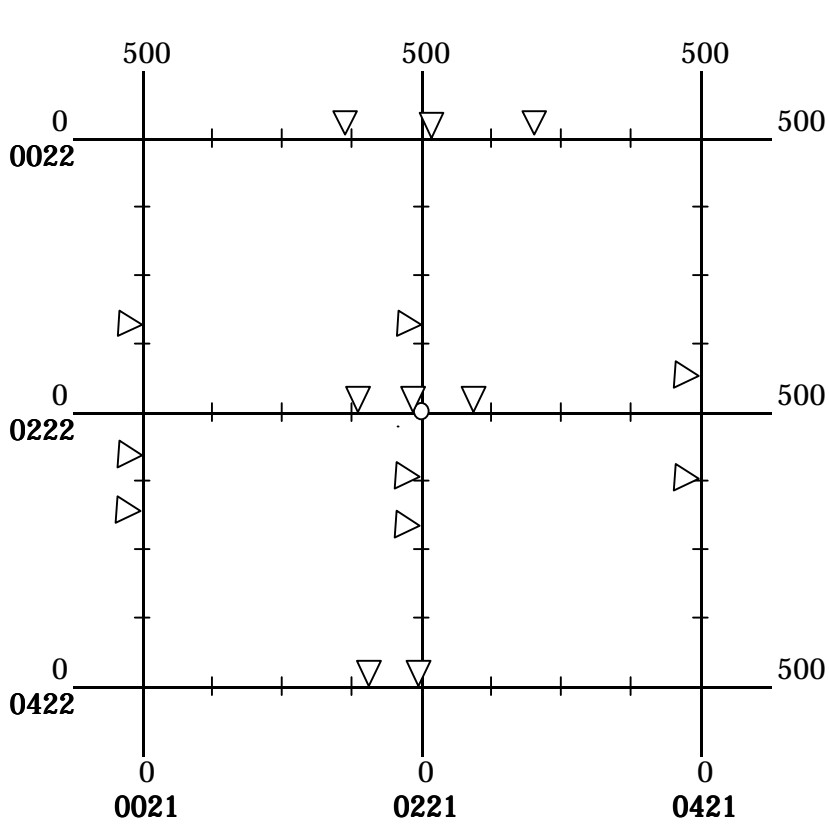
F3



F4

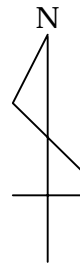
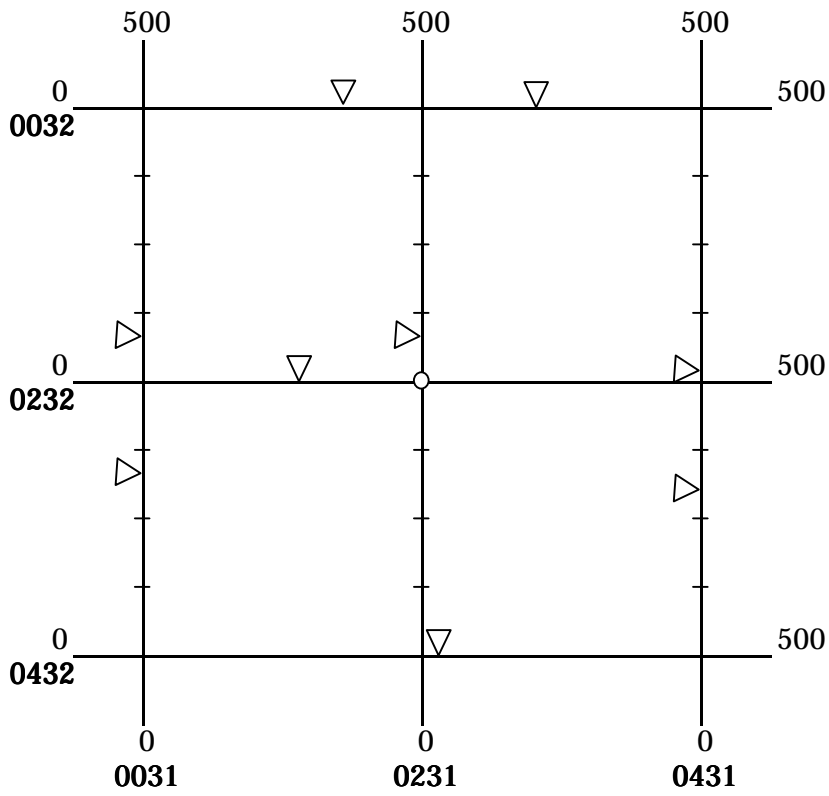


F5

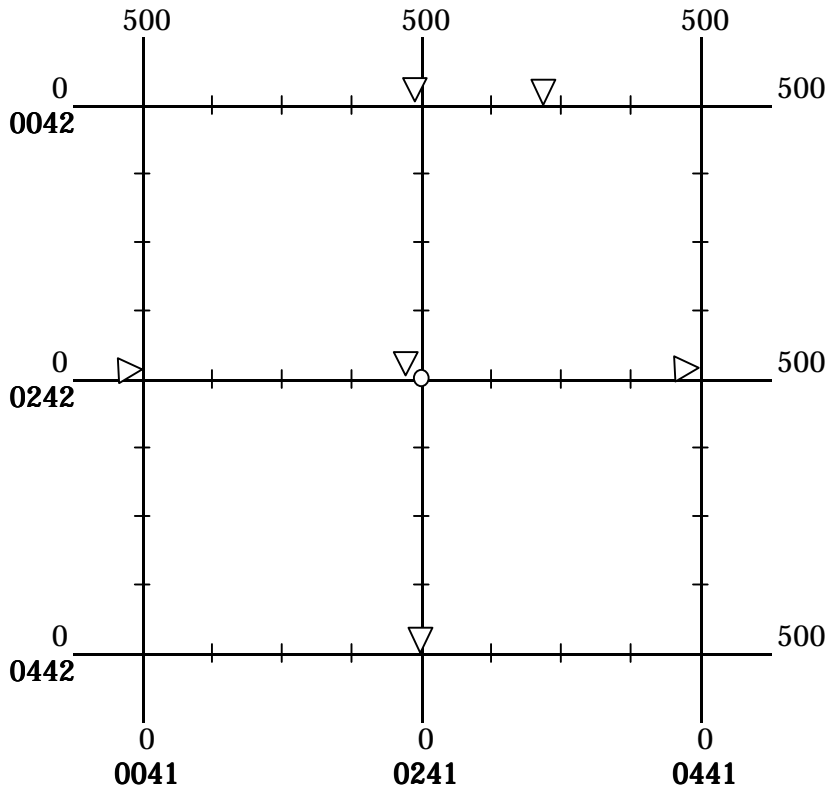


- Legend
- ▽ Weak anomaly
 - ▼ Strong anomaly
 - Planned site

Z25

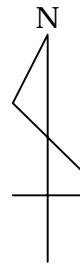
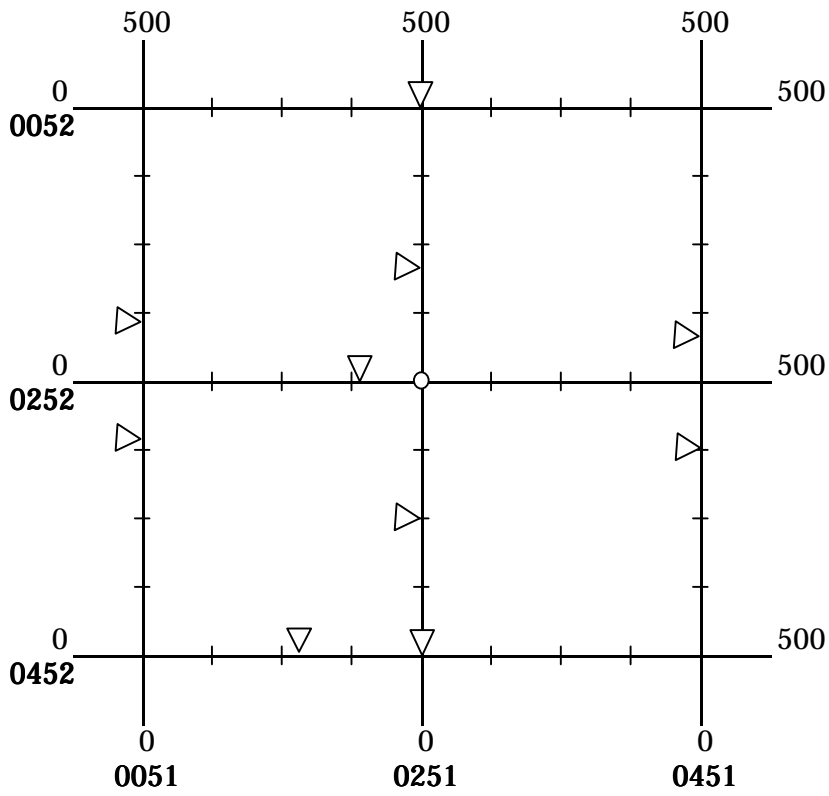


Z2

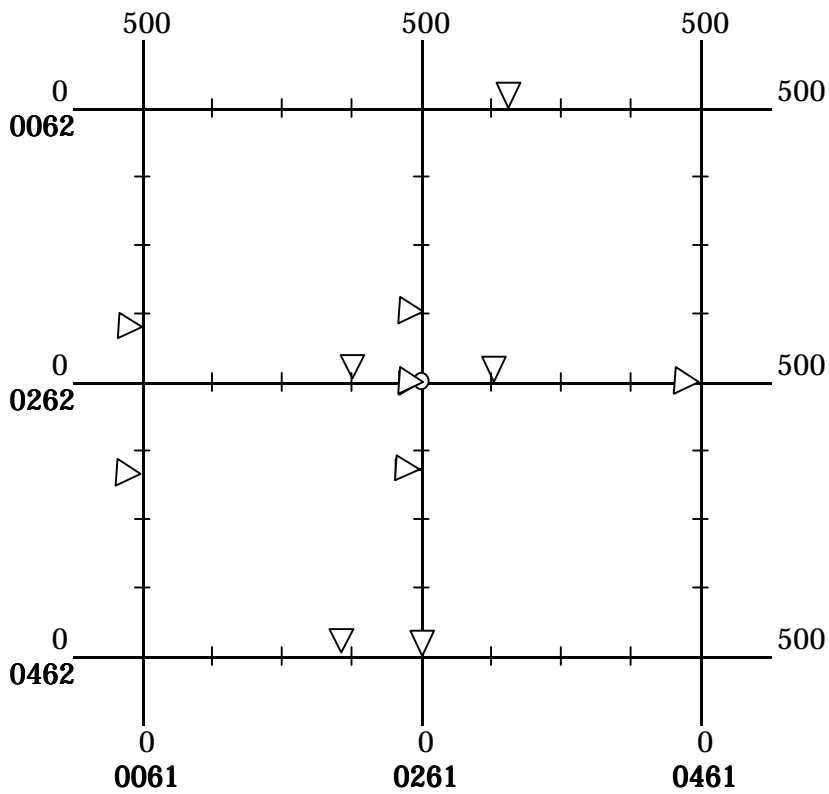


- Legend
- ▽ Weak anomaly
 - ▲ Strong anomaly
 - Planned site

Z3



Observation(Z3-1)



- Legend**
- ▽ Weak anomaly
 - ▲ Strong anomaly
 - Planned site