

グルジア国の鉱物資源

The appreciation of sought mineral resources enrolled on the State balance

#	Useful ores	The cost	
		Milliard USD	%
1.	The facing (constructing) materials	10.75	20.77
2.	The pure water for a drink (fresh mineral-healing)	9	17.38
3.	The rocked black coal	7	13.52
4.	Manganese ore	4.7	9.08
5.	Oil	4.7	9.08
6.	The constructing send materials	3.64	7.03
7.	Diatomite	1.23	2.37
8.	Ceolite	1.23	2.37
9.	The thermal water	1.2	2.3
10.	Calcite	1.06	2.04
11.	The perlite	1.05	2.02
12.	Natural gas	0.8	1.54
13.	Andezite	0.79	1.52
14.	Copper	0.7	1.35
15.	The quartz-feldspar send	0.6	1.16
16.	Bentonite	0.58	1.12
17.	Gold	0.55	1.06
18.	Barite	0.47	0.9
19.	Zinc	0.4	0.77
20.	The non-metal ore for metallurgy (Dolomite and Fluice limestone)	0.38	0.73
21.	Ceramic resource (Trahite and Reolite)	0.34	0.65
22.	Lead	0.2	0.38
23.	Arsenic	0.14	0.27
24.	The sends for glass-making	0.13	0.25
25.	Basalt for stone smelting	0.06	0.11
26.	Silver	0.03	0.06
27.	Antimony (Stibium)	0.03	0.06
Total:		51.76	100

Madneuli 鉱山 選鉱実績

年	銅鉱石				バライット鉱石											
	破砕量 1000T	給鉱量 1000T	精鉱量 1000T	Cu % 採収率	Au g/T 給鉱	Au g/T 精鉱	Au 採収率	Ag g/T 給鉱	Ag g/T 精鉱	Ag 採収率	破砕量 1000T	給鉱量 1000T	精鉱量 1000T	BaSO4 給鉱	BaSO4 精鉱 %	BaSO4 採収率
1975	567	567	63	2.42	1.92	9.87	57.0	4.01	30.29	42.0						
1976	1,357	1,357	101	1.71	1.46	11.62	59.3	3.38	24.47	45.6						
1977	460	451	31	1.43	1.12	9.83	59.6	4.81	22.37	45.0						
1978	69	67	3	0.96	0.80	8.01	51.3	5.74	45.26	48.1		167	27	24.7	87.2	57.9
1979	310	297	13	0.78	0.82	11.61	61.7	6.78	59.32	45.0		566	95	24.4	88.2	60.7
1980	696	673	42	1.14	1.03	9.03	55.0	5.45	45.90	42.5		379	62	24.8	84.9	55.6
1981	840	811	51	1.16	0.91	7.10	48.9	3.88	33.13	37.9		117	17	21.3	85.7	61.7
1982	1,006	962	50	0.96	0.72	6.17	44.4	4.00	28.37	37.9		172	24	18.9	87.7	67.1
1983	1,155	1,116	52	0.90	0.69	6.65	45.5	4.37	33.42	39.3		171	26	19.6	87.4	71.1
1984	1,320	1,227	60	0.91	0.59	5.53	46.4	2.97	23.76	39.4		175	24	19.7	86.1	62.5
1985	1,412	1,361	72	0.93	0.50	4.70	50.0	2.02	15.18	39.7		174	21	18.7	84.8	55.8
1986	1,395	1,343	70	0.95	0.64	5.77	47.2	2.61	19.91	40.0		170	27	21.9	85.9	64.1
1987	1,411	1,354	76	0.95	0.58	4.96	47.0	2.82	20.61	40.7		172	28	21.6	86.0	67.3
1988	1,448	1,397	71	0.95	0.71	6.67	47.6	2.88	22.77	40.3		263	40	20.7	85.3	65.0
1989	1,431	1,382	64	0.95	1.04	11.35	47.3	2.56	21.56	39.3		277	41	19.5	85.9	68.3
1990	1,451	1,392	66	0.96	1.16	11.97	48.7	2.21	19.07	40.8		188	23	17.8	85.0	62.2
1991	820	790	34	0.94	1.08	16.10	64.9	2.78	27.78	43.5		3	0	33.5	82.6	35.3
1992	877	884	37	0.87	0.86	10.45	46.4	2.25	17.74	33.3						
1993	391	377	13	0.80	1.19	17.27	49.1	2.76	22.66	27.4						
1994	391	230	9	0.87	0.92	10.94	48.2	3.24	21.69	27.3		15	5	32.2	85.1	33.4
1995	532	515	23	0.86	1.31	14.92	51.4	3.27	19.67	27.3						
1996	686	658	27	0.93	1.21	13.13	45.3	3.36	19.29	23.9						
1997	424	483	20	0.89	1.04	9.98	39.3	3.42	20.39	24.5						
1998	255	247	12	0.96	1.27	11.25	42.1	2.88	18.97	31.4						
1999	85	81	4	0.98	1.34	11.94	45.1	2.77	17.76	32.5						

ს.ს. „მადნეულის“ სპილენძის კონცენტრატის
ხარისხის სერტიფიკატი

10

ძირითადი კომპონენტები
Madneuli
精鉱品

შემცველობა % , გრ/ტნ

1. Cu	15 - 20 %
2. Pb.....	0.02 - 0.25 %
3. Zn.....	0.2 - 4.0 %
4. S.....	20 - 35 %
5. Fe.....	35 - 40 %
6. BaSO ₄	0.21 - 1.0 %
7. SiO ₂	10 - 18 %
8. Au.....	5 - 15 გრ/ტნ
9. Ag.....	15 - 28 გრ/ტნ
10. Ni.....	0.05 - 0.25 გრ/ტნ
11. Pd.....	0.20 გრ/ტნ
12. Se.....	0.01 გრ/ტნ
13. Te.....	0.115 გრ/ტნ
14. Al ₂ O ₃	0.1 - 0.8 %
15. Mg.....	0.1 - 0.5 %
16. CaO.....	0.01 - 0.21 %
17. Mn.....	0.006 - 0.05 %
18. Ti.....	0.03 - 0.06 %
19. Mo.....	0.001 - 0.003 %
20. Cr.....	0.01 %
21. Cd.....	0.006 %
22. As.....	0.001 - 0.01 %
23. Hg.....	0.0005 %
24. Bi.....	0.05 %



ტექ. უფროსი

Handwritten signature

კანხიძე

Handwritten signature

ოციმაკურიძე

Figure 9. Administrative structure of the Ministry of Environment of Georgia
 According to the Presidential Decree No. 128

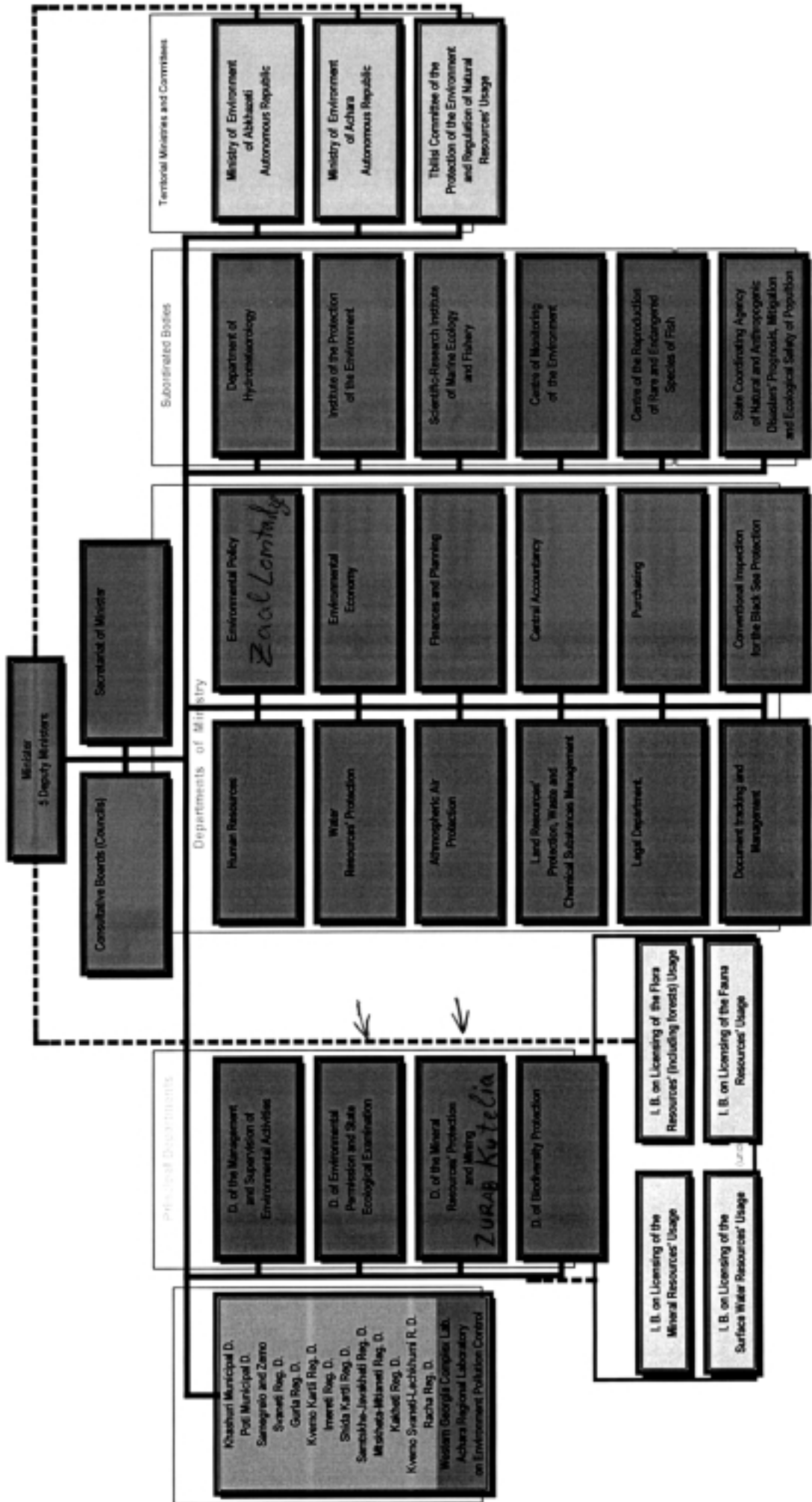


Figure 9. Administrative structure of the Ministry of Environment of Georgia
According to the Presidential Decree N198

