





**JICA/MEPA Workshop III**

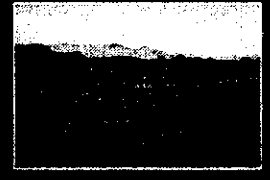
**"MEPA Ongoing GIS & RS Activities"**

**Mohammed Bukhari**



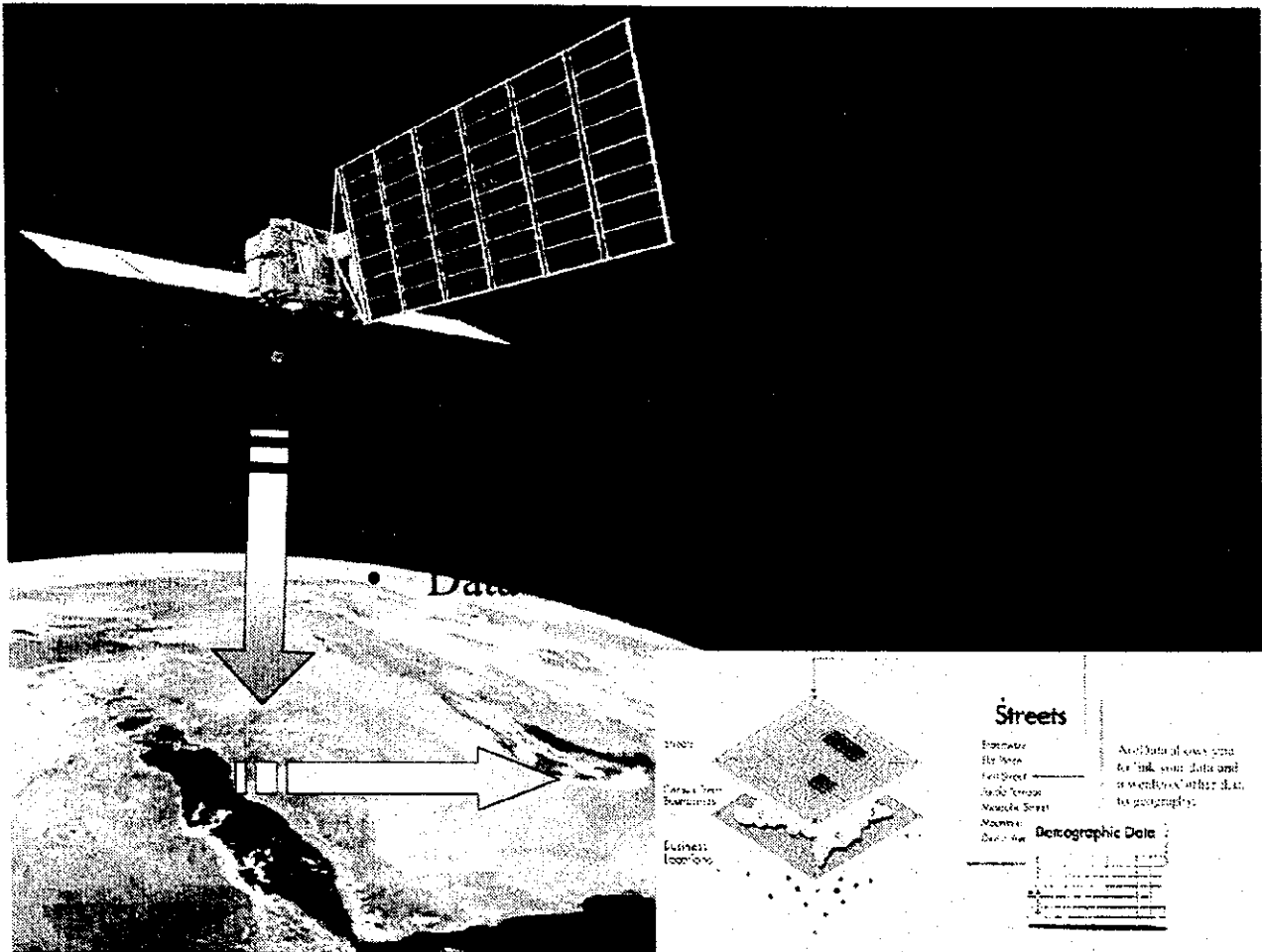
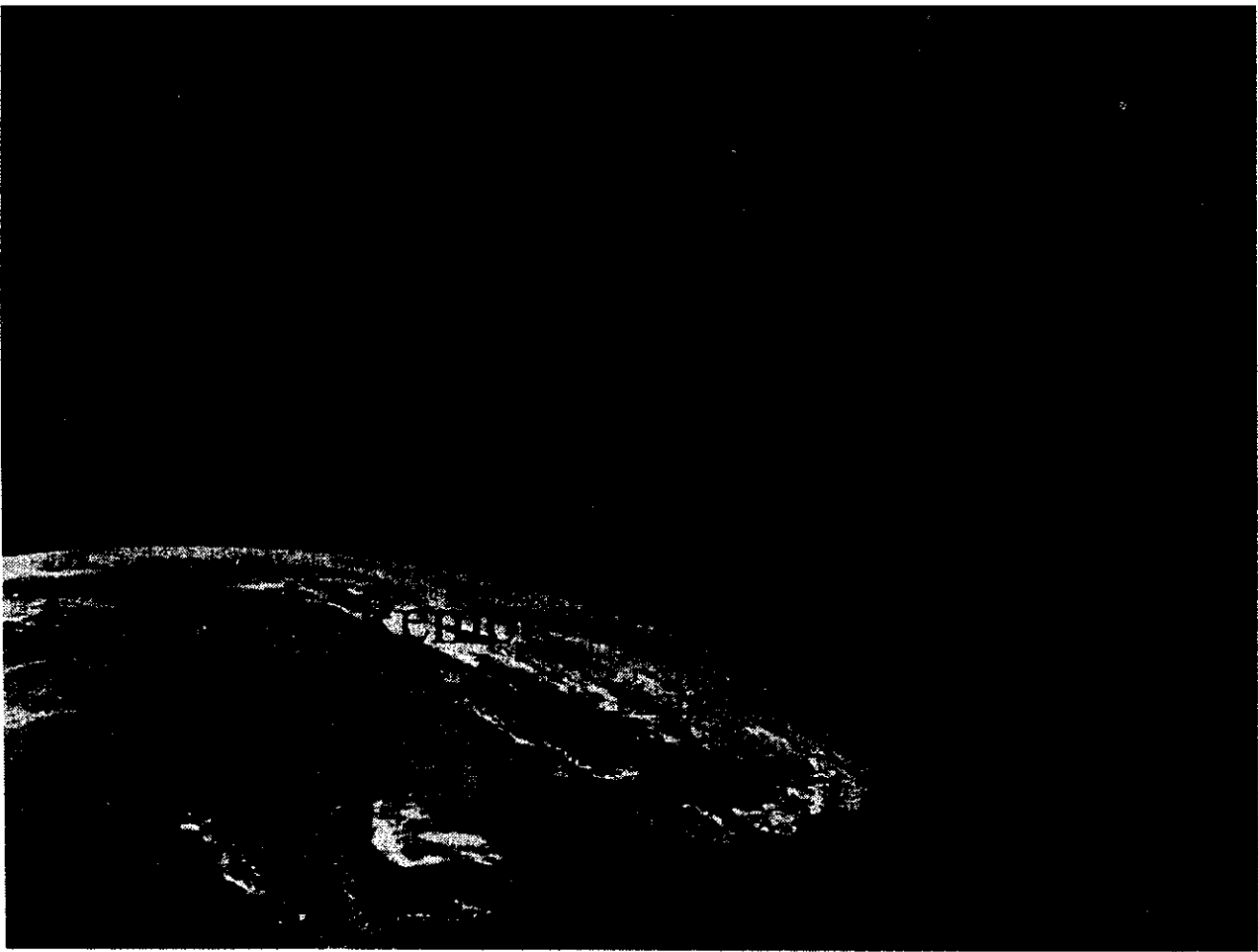
# MEPA's ongoing

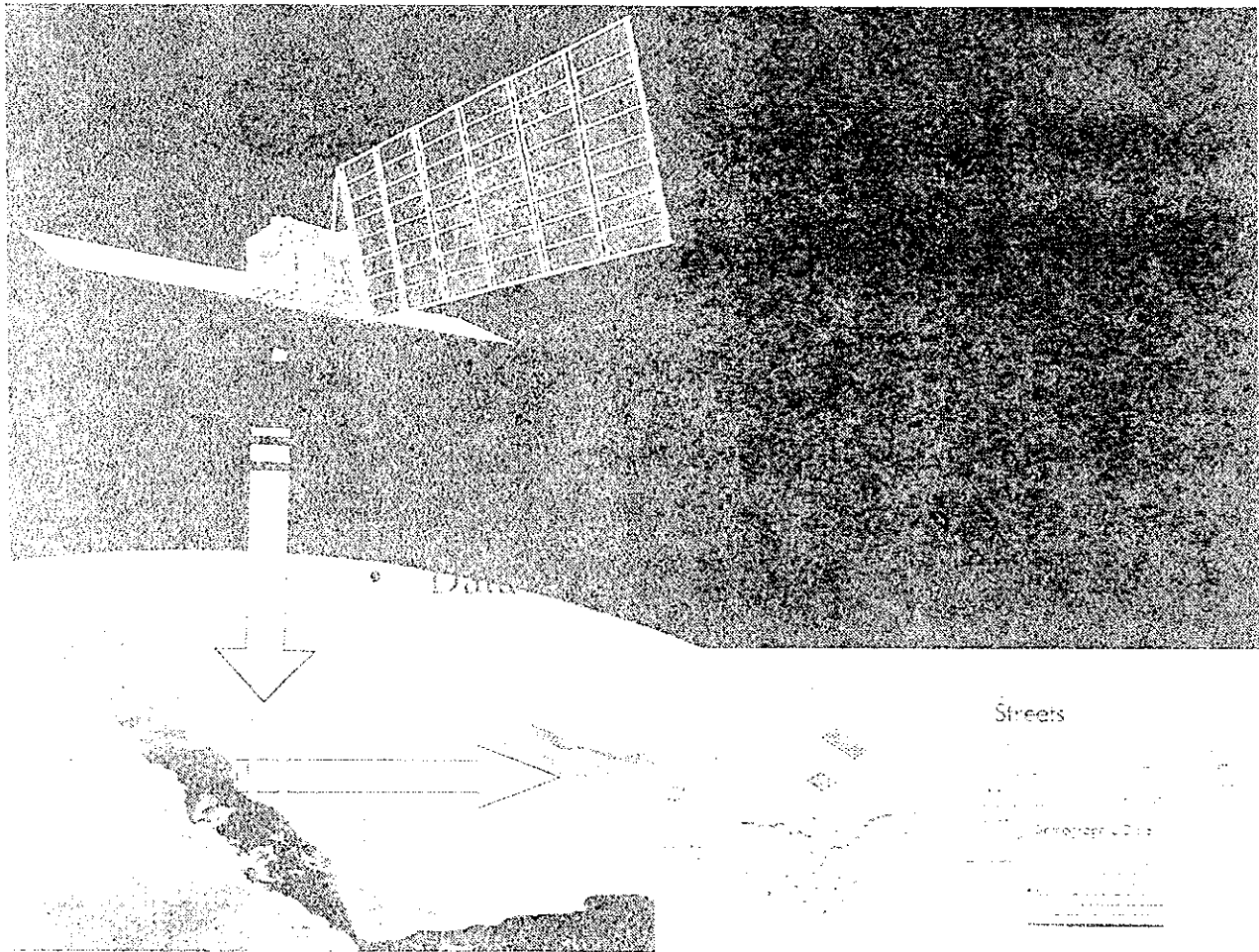
# initiatives

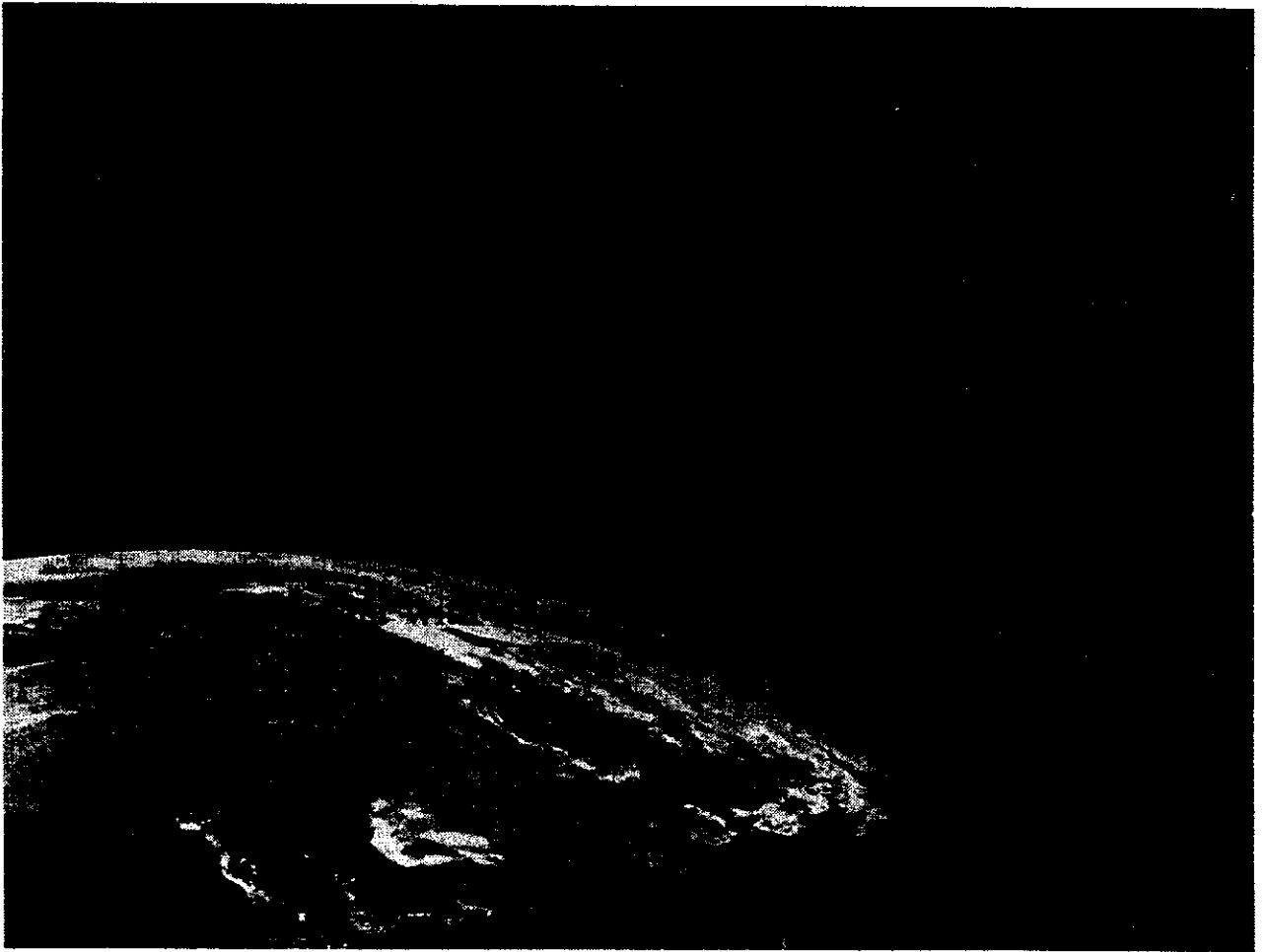
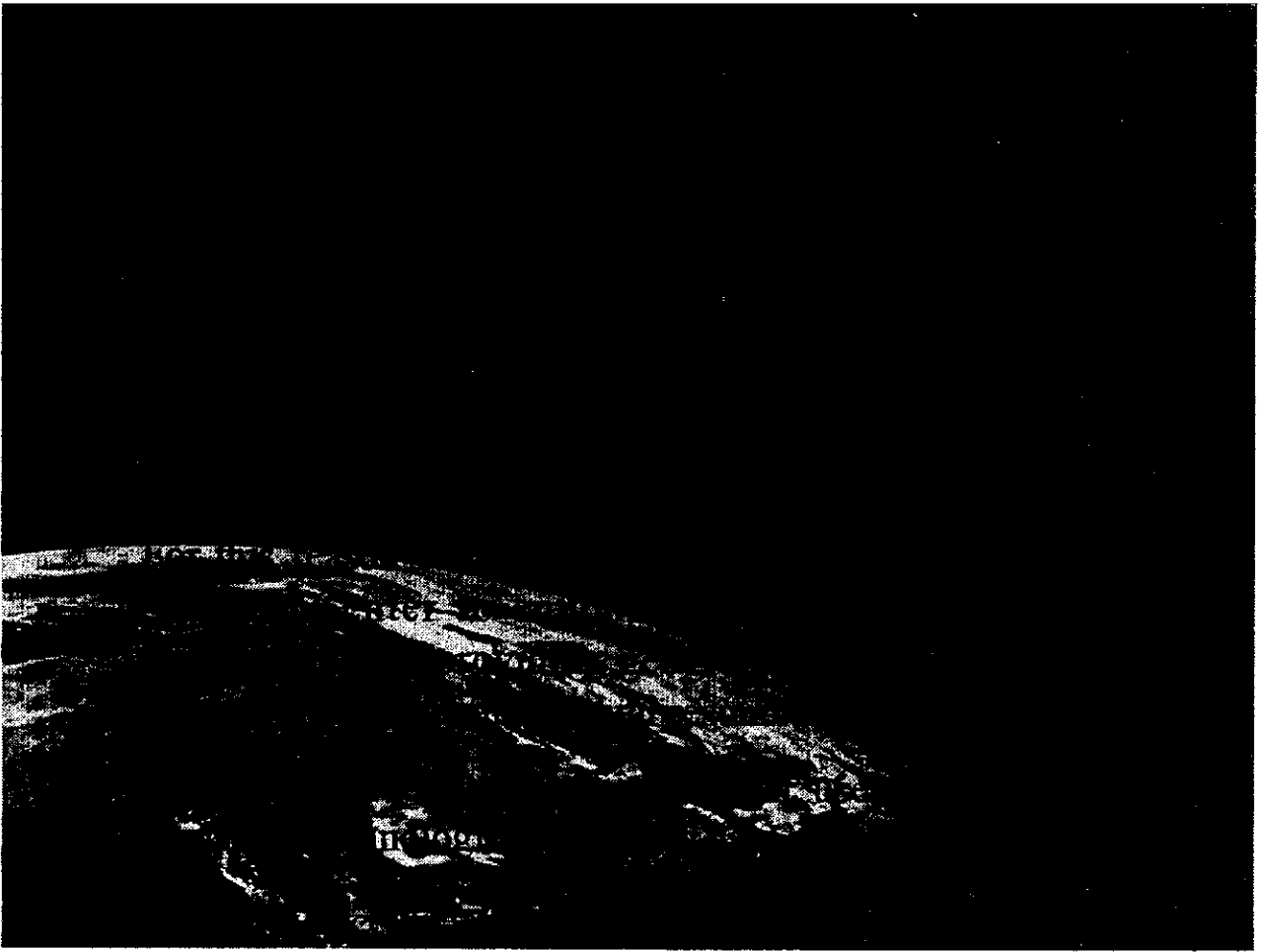


Mon  
1987

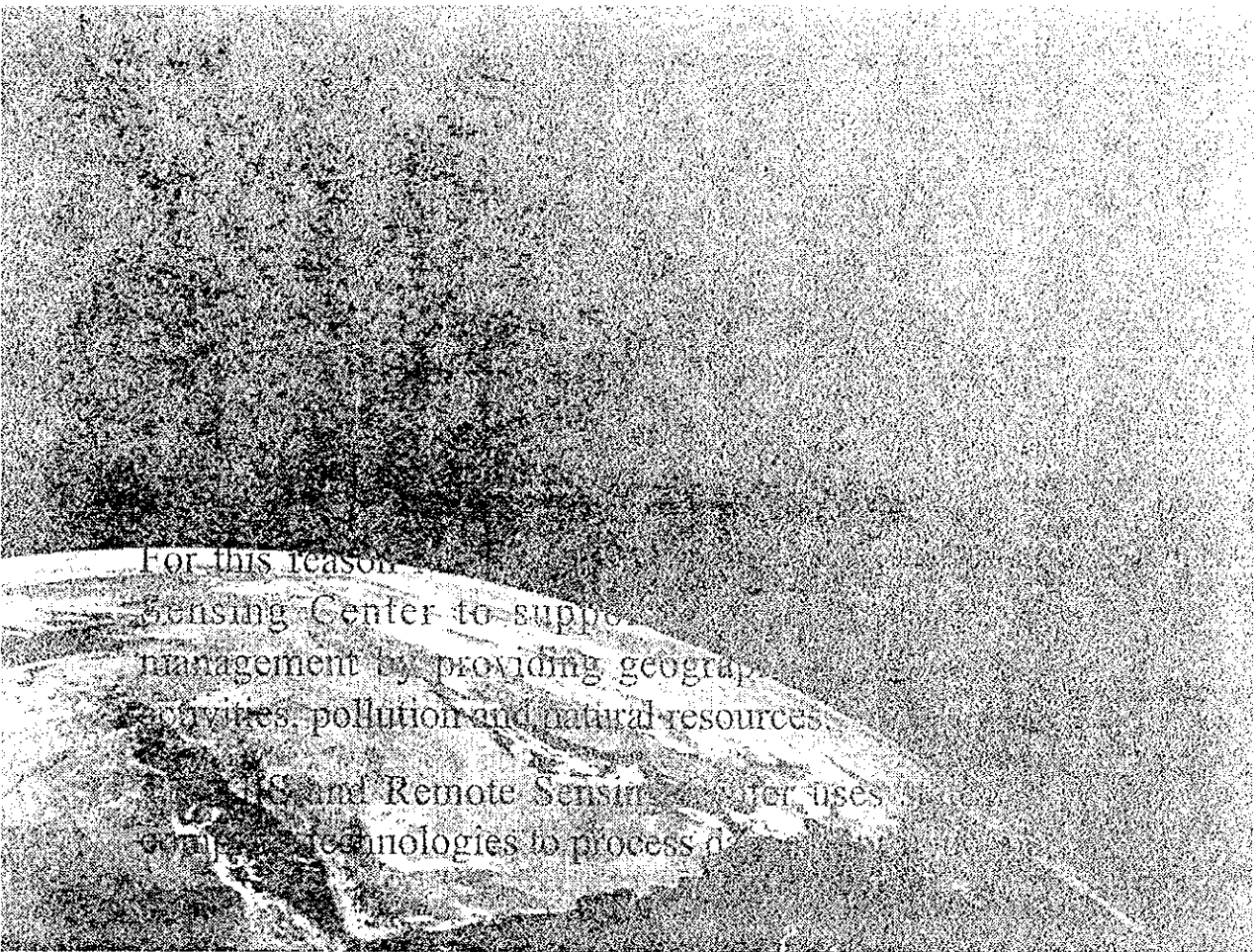












For this reason,

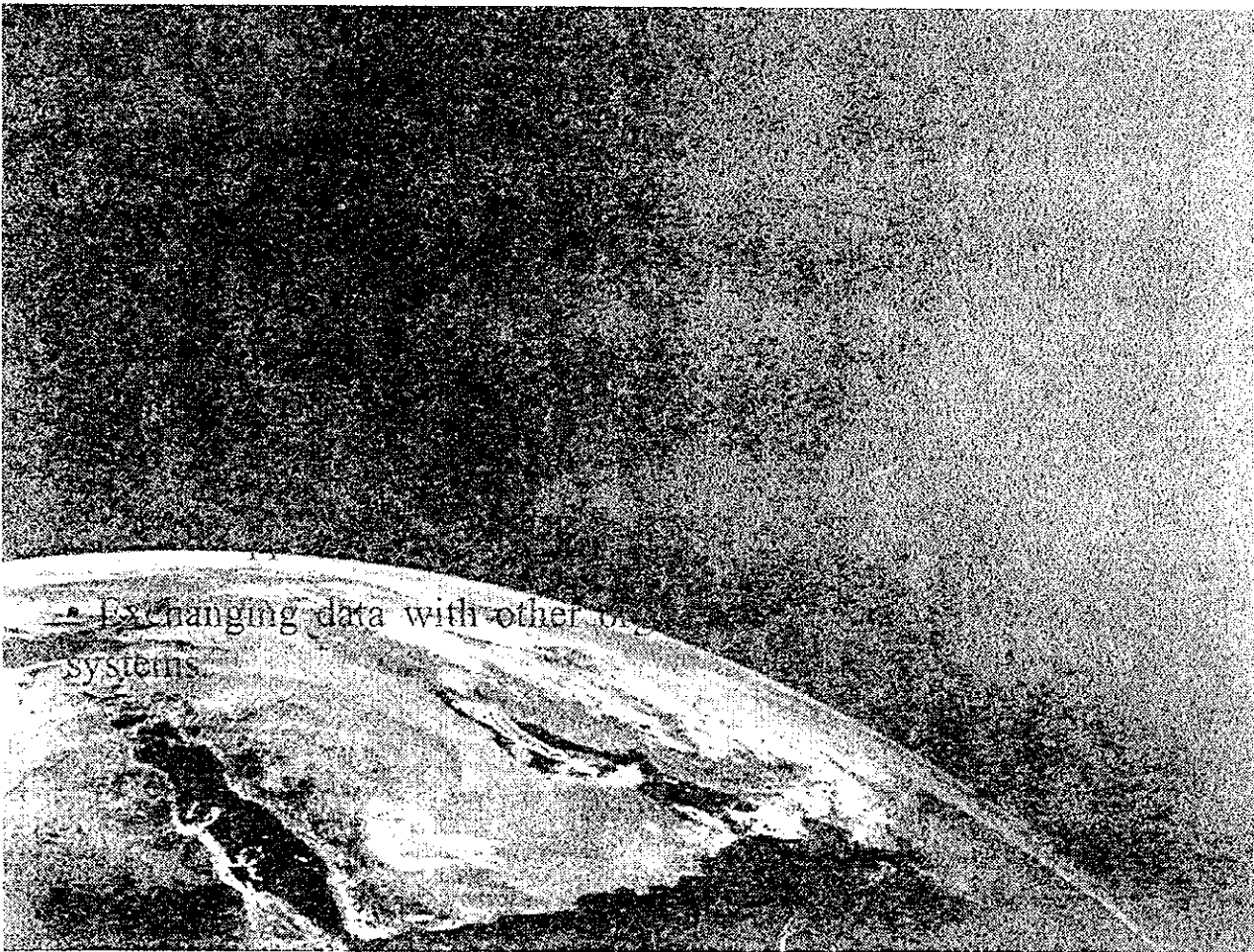
the Center to support

management by providing geograph

ical information on land use, water resources,

and Remote Sensing. The Center uses

various technologies to process d

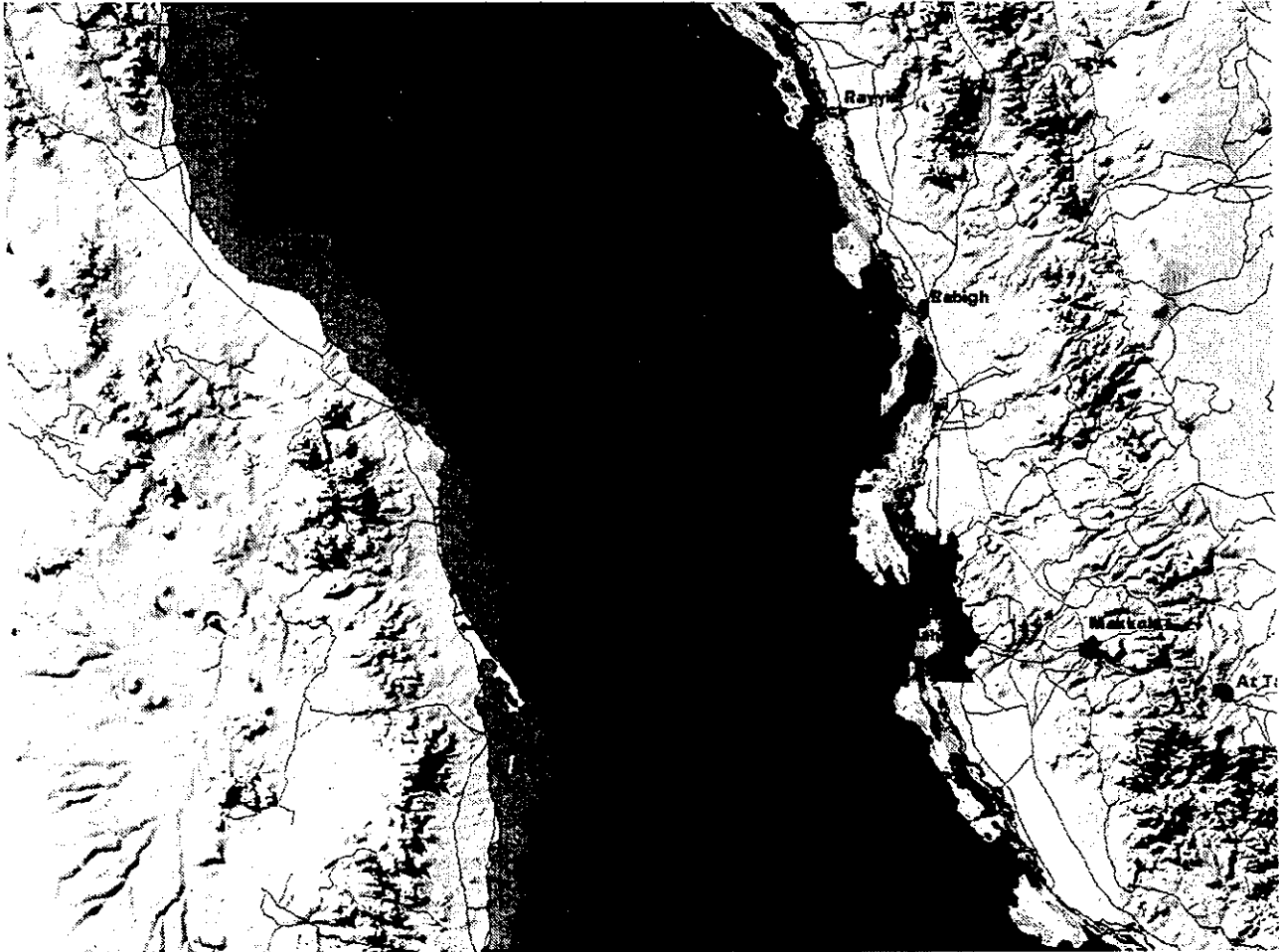
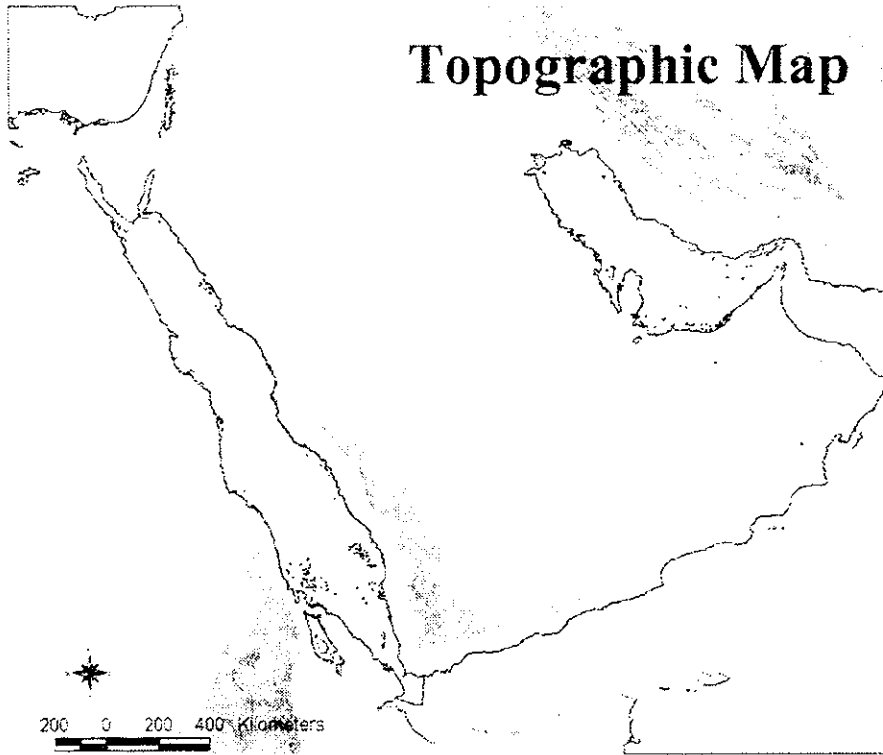


Exchanging data with other  
systems.



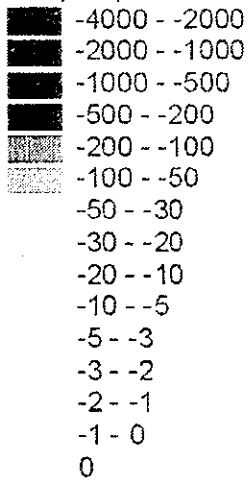
# Topographic Map

- Topop.shp
- 500 - 0
  - 0 - 250
  - 250 - 750
  - 750 - 1500
  - 1500 - 2500
  - 2500 - 3500
  - 3500 - 4500
  - 4500 - 5500
  - 5500 - 6500
  - 6500 - 7500
  - 7500 - 8500
  - 7501 - 8500
  - 8500 - 9500
  - 9500 - 10500
  - 10500 - 11500
  - 11500 - 12500
  - 12500 - 14500

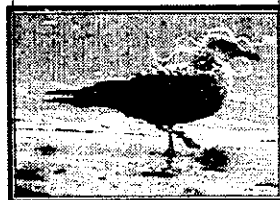
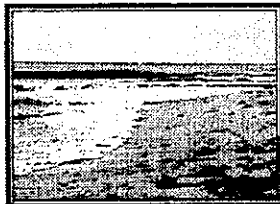
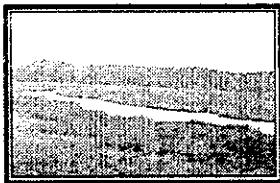


# Bathymetry Map

Bathp.shp



300 0 300 600 Kilometers



## Coastal Zone

