

## 附属資料 1

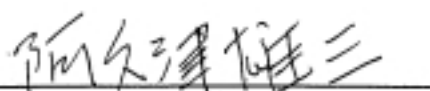
RECORD OF DISCUSSIONS BETWEEN JAPANESE  
IMPLEMENTATION STUDY TEAM AND  
AUTHORITIES CONCERNED OF THE GOVERNMENT OF  
THE KINGDOM OF THAILAND  
ON JAPANESE TECHNICAL COOPERATION FOR  
THE REFORESTATION AND EXTENSION PROJECT  
IN THE NORTHEAST OF THAILAND (PHASE II)

The Japanese Implementation Study Team organized by Japan International Cooperation Agency and headed by Mr. Yuzo AKUTSU (hereinafter referred to as "the Team"), visited the Kingdom of Thailand from August 29, 1999 to September 9, 1999 for the purpose of working out the details of the technical cooperation program concerning the Reforestation and Extension Project in the Northeast of Thailand (hereinafter referred to as "the Project") in the Kingdom of Thailand.

During its stay in the Kingdom of Thailand, the Team exchanged views and had a series of discussions with the Thai authorities concerned on desirable measures to be taken by both Governments for successful implementation of the above-mentioned Project.

As a result of the discussions, the Team and the Thai authorities concerned agreed to recommend to their respective Governments the matters referred to in the document attached hereto.

Bangkok, September 6, 1999



Yuzo AKUTSU  
Leader  
Japanese Implementation Study Team  
Japan International Cooperation Agency  
Japan



Plodprasop SURASWADI  
Director General  
Royal Forest Department  
Ministry of Agriculture and Cooperatives  
The Kingdom of Thailand

ATTACHED DOCUMENT

I. COOPERATION BETWEEN BOTH GOVERNMENTS

1. The Government of the Kingdom of Thailand will implement the Reforestation and Extension Project in the Northeast of Thailand Phase II (hereinafter referred to as "the Project") in cooperation with the Government of Japan.

2. The Project will be implemented in accordance with the Master Plan which is given in Annex I.

II. MEASURES TO BE TAKEN BY THE GOVERNMENT OF JAPAN

In accordance with the laws and regulations in force in Japan, the Government of Japan will take, at its own expense, the following measures through Japan International Cooperation Agency (hereinafter referred to as "JICA") according to the normal procedures under the technical cooperation scheme of the Colombo Plan for Cooperative Economic and Social Development in Asia and Pacific (hereinafter referred to as "the Colombo Plan").

1. DISPATCH OF JAPANESE EXPERTS

The Government of Japan will provide services of the Japanese experts as listed in Annex II.

2. PROVISION OF MACHINERY AND EQUIPMENT

The Government of Japan will provide such machinery, equipment and other materials necessary for the implementation of the Project as listed in Annex III (hereinafter referred to as "the Equipment"). The Equipment will become the property of the Government of the Kingdom of Thailand upon being delivered C.I.F to the Thai authorities concerned at the ports and/or airports of disembarkation.

3. TRAINING OF THAI PERSONNEL IN JAPAN

The Government of Japan will receive Thai personnel connected with the Project for technical training in Japan.

4. SPECIAL MEASURES TO BE TAKEN BY THE GOVERNMENT OF JAPAN

To ensure the smooth implementation of the Project, the Government of Japan



will take, in accordance with the laws and regulations in force in Japan, special measures through JICA for supplementing a portion of the local cost expenditures necessary for the execution of the physical infrastructure and middle level trainees training program.

### III. MEASURES TO BE TAKEN BY THE GOVERNMENT OF THE KINGDOM OF THAILAND

1. The Government of the Kingdom of Thailand will take necessary measures to ensure self-reliant operation of the Project during and after the period of Japanese technical cooperation, through the full and active involvement of all related authorities, beneficiary groups and institutions in the Project.

2. The Government of the Kingdom of Thailand will ensure that the technologies and knowledge acquired by the Thai nationals as a result of Japanese technical cooperation will contribute to the economic and social development of the Kingdom of Thailand.

3. The Government of the Kingdom of Thailand will grant, in the Kingdom of Thailand, privileges, exemptions and benefits to the Japanese experts referred to in II-1 above and their families, which are no less favorable than those accorded to experts of third countries working in the Kingdom of Thailand under the Colombo Plan.

4. The Government of the Kingdom of Thailand will ensure that the Equipment referred to in II-2 above will be utilized effectively for the implementation of the Project in consultation with the Japanese experts referred to in Annex II.

5. The Government of the Kingdom of Thailand will take necessary measures to ensure that the knowledge and experience acquired by the Thai personnel through technical training in Japan will be utilized effectively in the implementation of the Project.

6. In accordance with the laws and regulations in force in the Kingdom of Thailand, the Government of the Kingdom of Thailand will take necessary measures to provide at its own expense for the Project.

(1) Services of the Thai counterpart personnel and administrative personnel as listed in Annex IV;



- (2) Land, buildings and facilities as listed in Annex V;
- (3) Supply or replacement of machinery, equipment, instruments, vehicles, tools, spare parts and any other materials necessary for the implementation of the Project other than the Equipment provided through JICA under II-2 above;
- (4) Means of transport and travel allowances for the Japanese experts for the official travel within the Kingdom of Thailand; and
- (5) Suitably furnished accommodations for the Japanese experts and their families.

7. In accordance with the laws and regulations in force in the Kingdom of Thailand, the Government of the Kingdom of Thailand will take necessary measures to meet:

- (1) Expenses necessary for transportation within the Kingdom of Thailand of the Equipment referred to in II-2 above as well as for the installation, operation and maintenance thereof;
- (2) Custom duties, internal taxes and any other charges imposed in the Kingdom of Thailand on the Equipment referred to in II-2 above; and
- (3) Running expenses necessary for the implementation of the Project.

#### IV. ADMINISTRATION OF THE PROJECT

1. Director General, Royal Forest Department, Ministry of Agriculture and Cooperatives, as the Project Director, will bear overall responsibility for the administration and implementation of the Project.

2. Director, Reforestation Office, Royal Forest Department, Ministry of Agriculture and Cooperatives, as the Project Manager, will be responsible for the managerial and technical matters of the Project.

3. The Japanese Chief Advisor will provide necessary recommendations and advice to the Project Director and the Project Manager on any matters pertaining to the implementation of the Project.

4. The Japanese experts will provide necessary technical guidance and advice to the Thai counterpart personnel on technical matters pertaining to the implementation of the Project.



8



5. For the effective and successful implementation of technical cooperation for the Project, a Joint Coordinating Committee will be established whose functions and composition are described in Annex VI.

6. The Organizational Chart of the Project is shown in Annex VII.

#### V. JOINT EVALUATION

Evaluation of the Project will be conducted jointly by the two Governments through JICA and the Thai authorities concerned, at the middle and during the last six months of the cooperation term in order to examine the level of achievement.

#### VI. CLAIMS AGAINST JAPANESE EXPERTS

The Government of the Kingdom of Thailand shall bear claims, if any arises, against the Japanese experts engaged in technical cooperation for the Project resulting from, occurring in the course of, or otherwise connected with the discharge of their official functions in the Kingdom of Thailand except for those arising from the willful misconduct or gross negligence of the Japanese experts.

#### VII. MUTUAL CONSULTATION

There will be mutual consultation between the two Governments on any major issues arising from, or in connection with, this Attached Document.

#### VIII. MEASURES TO PROMOTE UNDERSTANDING OF AND SUPPORT FOR THE PROJECT

For the purpose of promoting support for the Project among the people of the Kingdom of Thailand, the Government of the Kingdom of Thailand will take appropriate measures to make the Project widely known to the people of the Kingdom of Thailand.

#### IX. TERM OF COOPERATION

The duration of technical cooperation for the Project under this Attached Document will be five (5) years from December 13, 1999.

*Akutan*

*PS*

ANNEX I	MASTER PLAN
ANNEX II	LIST OF JAPANESE EXPERTS
ANNEX III	LIST OF MACHINERY AND EQUIPMENT
ANNEX IV	LIST OF THAI COUNTERPART AND ADMINISTRATIVE PERSONNEL
ANNEX V	LIST OF LAND, BUILDINGS AND FACILITIES
ANNEX VI	JOINT COORDINATING COMMITTEE
ANNEX VII	ORGANIZATIONAL CHART OF REFORESTATION AND EXTENSION PROJECT PHASE II

*Akafan*

*DS.*

ANNEX I      MASTER PLAN

1. Overall Goal

Sustainable forest management techniques in small-scale plantation are adopted in the project area.

2. Project Purpose

Systems for the extension/improvement of the sustainable forest management techniques in small-scale plantation are established in the project area.

3. Outputs of the Project

- 1) Forest management information is accumulated at RFD.
- 2) Sustainable forest management techniques in small-scale plantation are improved.
- 3) Information and techniques on the forest management are introduced to the residents through the RFD and its network activities.
- 4) Monitoring result is well utilized for the improvement of project activities.

4. Activities of the Project

4 -1 Forest management information

- 1) Collection and analysis of the forest management information and data
- 2) Building up database management systems
- 3) Development of information delivering systems

4 -2 Sustainable forest management techniques in small-scale plantation

- 1) Improvement of nursery and reforestation techniques
- 2) Improvement of the method for forest products utilization
- 3) Establishment and improvement of model/demonstration forests
- 4) Drawing up the handbook for the forest management

4 -3 Training and Extension

- 1) Establishment of extension model areas
- 2) Conducting training courses and extension services
- 3) Improvement of the training and extension techniques

4 -4 Monitoring

- 1) Monitoring of project activities on a regular basis
- 2) Picking up useful information in order to improve each project activity





ANNEX II LIST OF JAPANESE EXPERTS

1. Chief Advisor
2. Coordinator
3. Long-term experts in the following technical fields:
  - 1) Forest Management Information
  - 2) Forest Management Techniques
  - 3) Training and Extension

Note: Chief Advisor and Coordinator may serve concurrently as one of these experts.

4. Short-term experts in related fields will be dispatched as necessary for smooth implementation of the Project.

ANNEX III LIST OF MACHINERY AND EQUIPMENT

1. Machinery, equipment, tools, spare parts, and materials in the following technical fields:
  - 1) Forest Management Information
  - 2) Forest Management Techniques
  - 3) Training and Extension

2. Other equipments necessary for the implementation of the Project

*Alister*

*RB*

ANNEX IV LIST OF THAI COUNTERPART AND ADMINISTRATIVE PERSONNEL

1. Project Director: Director General, Royal Forest Department (RFD)
2. Project Manager: Director, Reforestation Office, RFD
3. Field Manager: To be appointed by the Project Director
4. Project Coordinator: To be appointed by the Project Director
5. Chief of the Reforestation and Extension Center 1-4
6. Counterparts at each four Centers in the field of:
  - 1) Forest Management Techniques
  - 2) Forest Management and Information
  - 3) Training and Extension
7. Administrative personnel
  - 1) Clerks
  - 2) Drivers
  - 3) Laborers
  - 4) Other necessary supporting staff

ANNEX V LIST OF LAND, BUILDINGS, AND FACILITIES

1. Land for
  - 1) Project Office and related facilities
  - 2) Model forests
2. Buildings and Facilities for
  - 1) Project Office
  - 2) Expert Room
  - 3) Laboratory
  - 4) Administrative Room
  - 5) Others

*A. Katan*

*FB*

## ANNEX VI. JOINT COORDINATING COMMITTEE

### 1. Functions

The Joint Coordinating Committee will meet at least once a year or whenever necessity arises, and work:

- 1) To approve the Annual Plan of Operation to be formulated by the Project in accordance with the Record of Discussions;
- 2) To review the overall progress of the technical cooperation program and activities carried out under the above-mentioned Annual Plan of Operation in particular; and
- 3) To review and exchange views on major issues arising from or in connection with the technical cooperation program.

### 2. Composition

1) Chairperson: Director General of RFD, Ministry of Agriculture and Cooperatives, as the Project Director

#### 2) Thai side

- (1) Representative, Department of Technical and Economical Cooperation
- (2) Director, Reforestation Office, RFD
- (3) Representative, Budget Bureau
- (4) Director, Foreign Agricultural Relations Division, Ministry of Agriculture and Cooperatives
- (5) Director, Forest Research Office, RFD
- (6) Director, Foreign Forestry Affairs Division, RFD
- (7) Director, Forest Nursery Division, RFD
- (8) Director, Private Reforestation Division, RFD
- (9) Director, Community Forestry Division, RFD
- (10) Director, State Reforestation Division, RFD
- (11) Field Manager, as a member and a secretary of the committee

#### 3) Japanese side

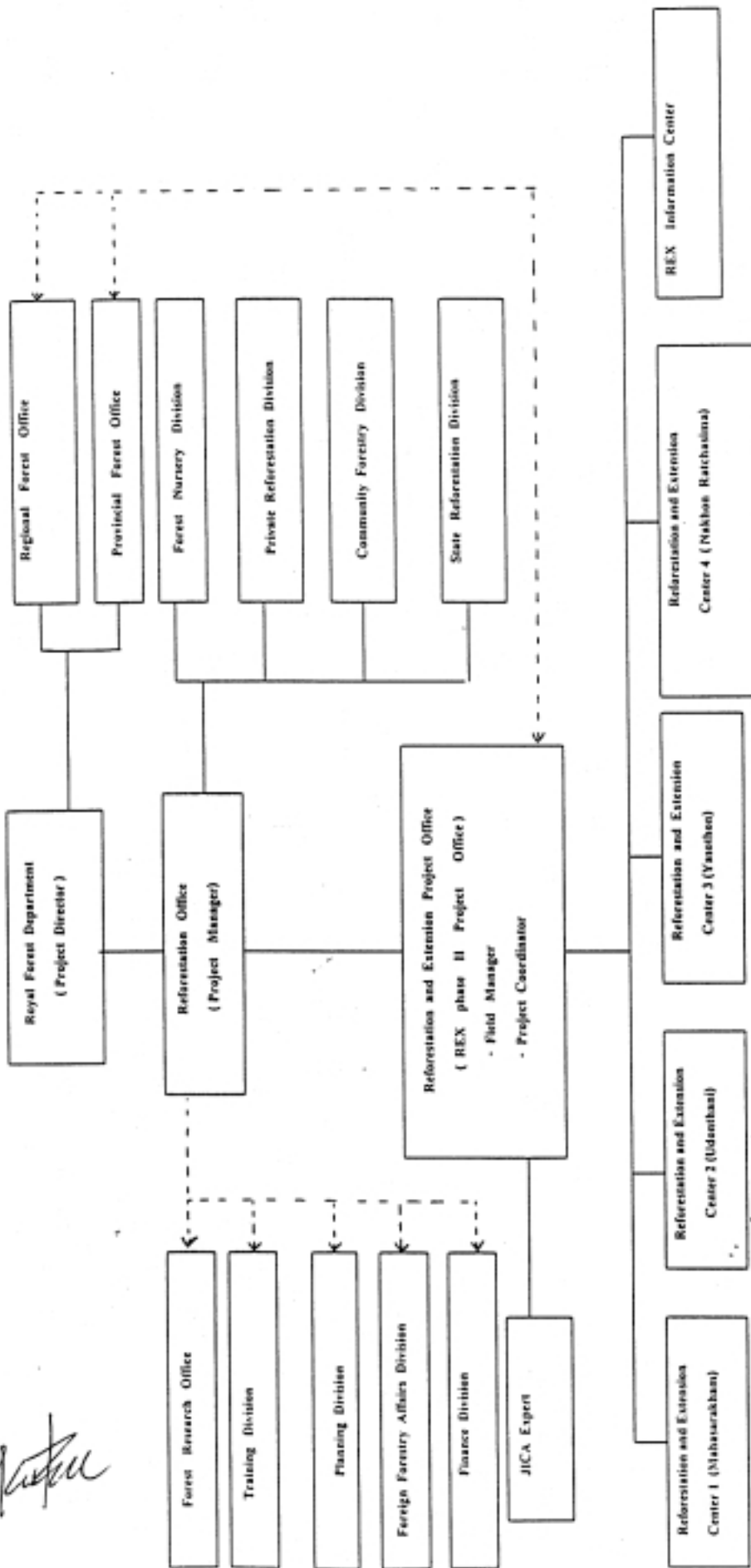
- (1) Chief Advisor
- (2) Coordinator
- (3) Experts appointed by the Chief Advisor
- (4) Resident Representative of JICA Thailand Office
- (5) Personnel concerned to be dispatched by JICA, if necessary

Note: Official(s) of the Embassy of Japan may attend the Joint Coordinating Committee meeting as observer(s). Chairperson can request the attendance of official(s) if necessary.



ANNEX VII ORGANIZATION CHART OF REFORESTATION AND EXTENSION PROJECT PHASE II

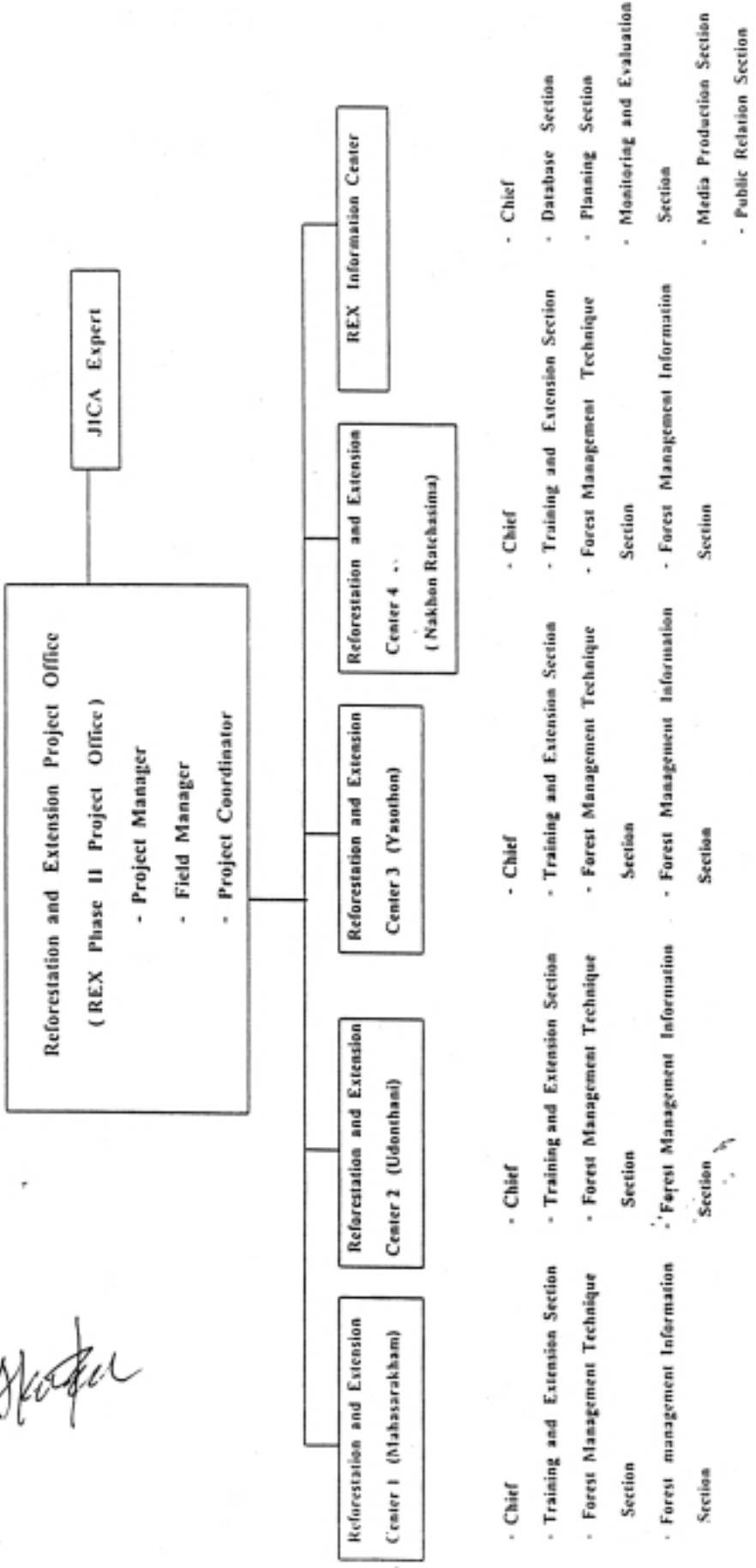
*Handwritten signature*



Legend : Line of Command \_\_\_\_\_  
Line of Communication and Integration - - - - -

*Handwritten signature*

*Handwritten signature*



*Handwritten initials*

THE MINUTES OF DISCUSSIONS BETWEEN  
JAPAN INTERNATIONAL COOPERATION AGENCY AND  
AUTHORITIES CONCERNED OF  
THE GOVERNMENT OF THE KINGDOM OF THAILAND  
ON JAPANESE TECHNICAL COOPERATION FOR  
THE REFORESTATION AND EXTENSION PROJECT  
IN THE NORTHEAST OF THAILAND (PHASE II)

The Japanese Implementation Study Team organized by Japan International Cooperation Agency and headed by Mr. Yuzo AKUTSU (hereinafter referred to as "the Team"), had a series of discussions with the authorities concerned of the Government of the Kingdom of Thailand on the Japanese technical cooperation programme for the Reforestation and Extension Project in the Northeast of Thailand (hereinafter referred to as "the Project").

As the result of the discussions, both parties jointly formulated the Tentative Schedule of Implementation for the Project as attached hereto. It has been formulated in accordance with the Attached Document of the Record of Discussions (hereinafter referred to as "R/D") signed in Bangkok on September 6, 1999, and is subject to change within the framework of R/D, when necessity arises, in the course of the implementation of the Project.

Both parties have also agreed to convey the following understandings to the authorities concerned in their respective governments for their consideration.


1. Project office would be located at the Reforestation and Extension Center 4(four) in Nakhon Ratchasima for the efficient collaboration with relevant organizations. As it is essential to coordinate among all the related authorities concerned and to accumulate the forest management information, Project Liaison Office and REX Information Center will be set up at the Royal Forest Department in Bangkok.



2. For the enhancement and utilization of the project results, facilities to reach out to the residents in the Project area will be established at the Reforestation and Extension Center 4. Having recognized the importance of this establishment, the Team will recommend the Japanese authorities to consider the possibility of providing supplemental local cost for establishment of the building.

3. Both parties would try out to provide the necessary budget for the smooth implementation of the Project.

Bangkok, September 6, 1999



Yuzo AKUTSU

Leader

Japanese Implementation Study Team  
Japan International Cooperation Agency  
Japan



Plodprasop SURASWADI

Director General

Royal Forest Department  
Ministry of Agriculture and Cooperatives  
The Kingdom of Thailand



**Tentative Schedule of Implementation for  
the Reforestation and Extension Project in the Northeast of Thailand (Phase II)**

Activities	1999	2000	2001	2002	2003	2004
<b>1. Forest management information</b> 1) Collection and analysis of the forest management information and data 2) Building up database management systems 3) Development of information delivering systems						
<b>2. Sustainable forest management techniques in small-scale plantation</b> 1) Improvement of nursery and reforestation techniques 2) Improvement of methods for forest products utilization 3) Establishment and improvement of model/ demonstration forests 4) Drawing up the handbook for the forest management						
<b>3. Training and Extension</b> 1) Establishment of extension model areas 2) Conducting training courses and extension services 3) Improvement of training and extension techniques						
<b>4. Monitoring</b> 1) Monitoring of project activities on a regular basis 2) Picking up useful information in order to improve each project activity						

