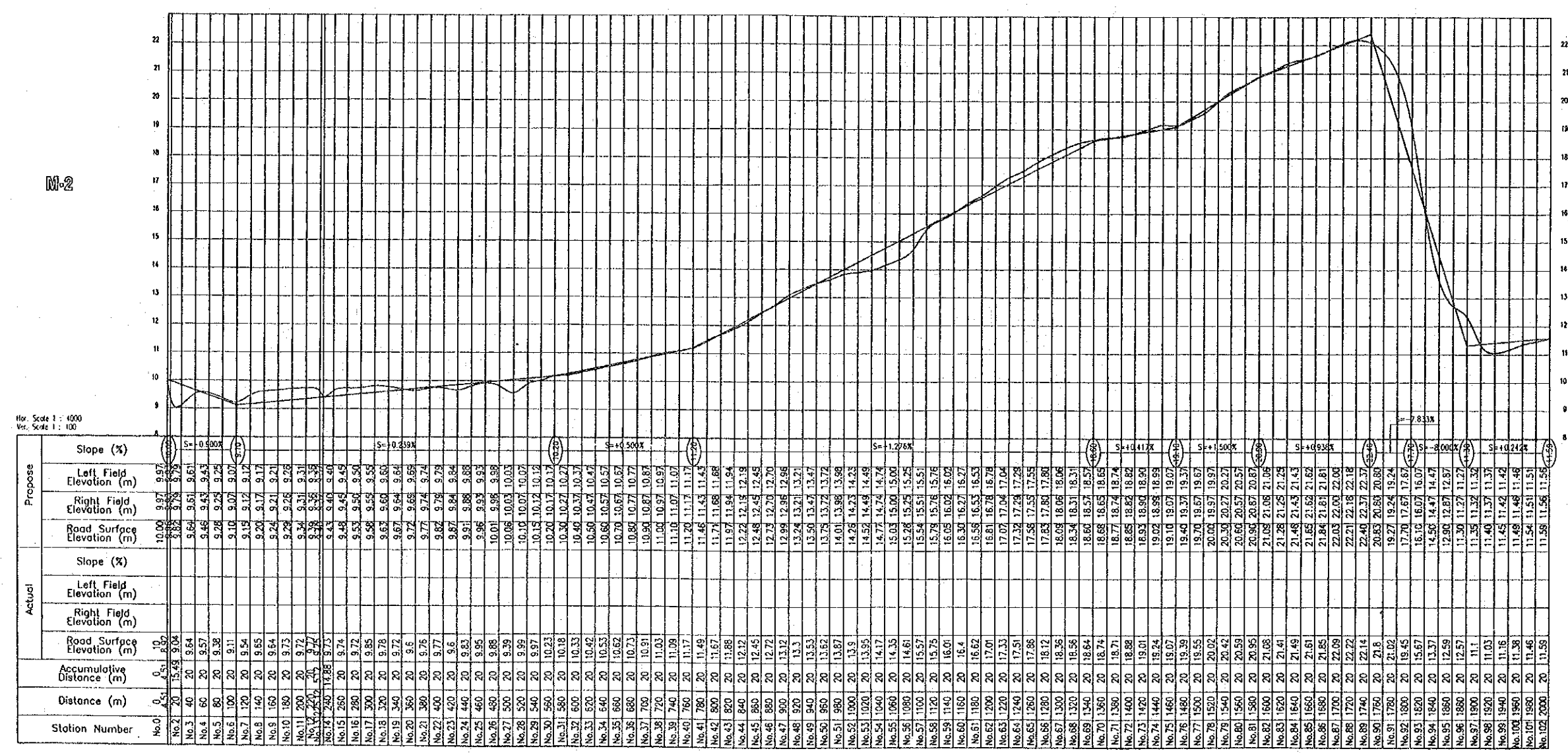
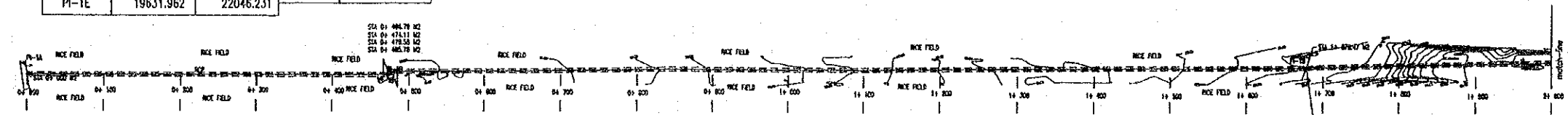
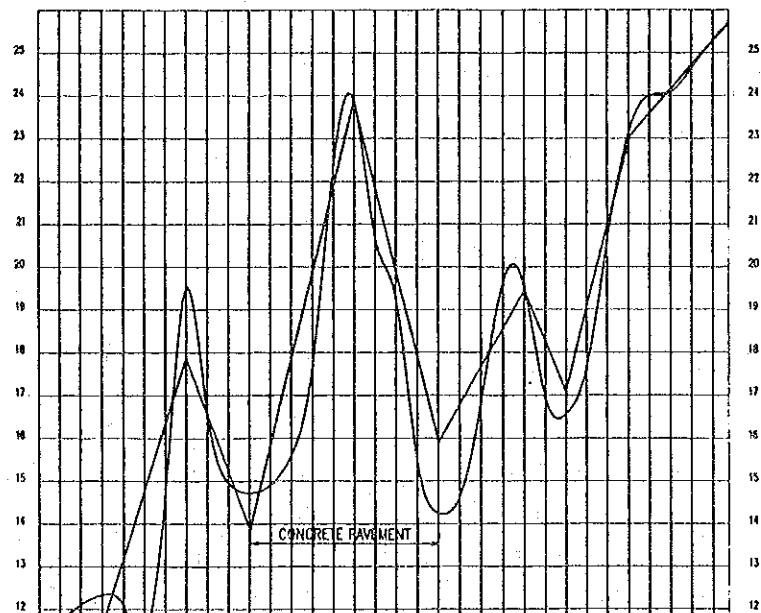
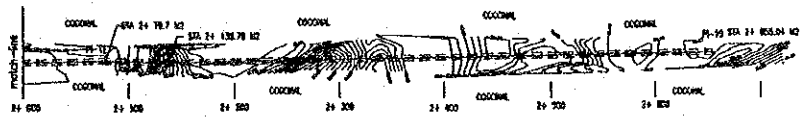


P.I.#	COORDINATES		DST.	BEARING	T (M)	I	R (M)	Lc (M)	E	D	PC	PT
	NORTHING	EASTING										
M2												
PI-1A	20000	20000	470.5	S 79-15 E								
PI-1B	19912.228	20462.236	11.81	N 79-47 E	3.7	20-58	20	7.32	0.34	57.3	Sta. 0+ 466.79	Sta. 0+ 474.11
PI-1C	19914.322	20473.855	1196.33	S 79-36 E	3.64	20-37	20	7.2	0.33	57.3	Sta. 0+ 478.58	Sta. 0+ 485.78
PI-1D	19698.249	21650.514										
PI-1E	19631.962	22046.231	401.23	S 80-29 E								



	SURVEYED BY:	GEODETIC ENGINEER:	PROJECT TITLE:	DATE SURVEYED:	FILE NAME:
	MEGA PHILIPPINES, INC. Block 3, Lot 14, Orchids cor. Roces Streets, West, Fairview, Quezon City Tel. Nos. 936-06-06 937-66-96 937-66-78 Loc. 1 to 12 Direct Line 938-71-18 Fax (632) 938-27-01	NICANOR VALENCIA ANDAYON REG. NO. 3532 DATE: 03-20-87 LIC. NO. 7953671 DATE: 01-04-2K	FARM TO MARKET ROADS THE DEVELOPMENT OF AGRARIAN REFORM COMMUNITIES (ARC'S) IN THE PROVINCE OF ISABELA IN THE REPUBLIC OF THE PHILIPPINES	Aug. 14-17, 2000	M-1
			LOCATION:	CAD BY:	
			Minagbag, Quezon, Isabela	TALAHIB	

THE REPUBLIC OF THE PHILIPPINES THE STUDY ON THE DEVELOPMENT OF ARCS IN THE PROVINCE OF ISABELA	
Road Profile (M-1) (1/2)	DWG B-29
JAPAN INTERNATIONAL COOPERATION AGENCY	



Hor. Scale 1 : 4000
Ver. Scale 1 : 100

Station Number	Propose				Actual				Accumulative Distance (m)	Distance (m)
	Slope (%)	Left Field Elevation (m)	Right Field Elevation (m)	Road Surface Elevation (m)	Slope (%)	Left Field Elevation (m)	Right Field Elevation (m)	Road Surface Elevation (m)		
No. 102 2000	6.67%	11.56	11.56	11.56	6.67%	11.59	11.59	11.59	20	2000
No. 103 2020	0.00%	11.56	11.56	11.56	0.00%	11.69	11.69	11.69	20	2020
No. 104 2040	0.00%	11.56	11.56	11.56	0.00%	12.15	12.15	12.15	20	2040
No. 105 2060	7.69%	11.56	11.56	11.56	7.69%	12.35	12.35	12.35	20	2060
No. 106 2080	13.14%	11.56	11.56	11.56	13.14%	12.43	12.43	12.43	20	2080
No. 107 2100	14.72%	11.56	11.56	11.56	14.72%	10.38	10.38	10.38	20	2100
No. 108 2120	17.87%	11.56	11.56	11.56	17.87%	14.02	14.02	14.02	20	2120
No. 109 2140	16.54%	11.56	11.56	11.56	16.54%	20	20	20	20	2140
No. 110 2160	15.23%	11.56	11.56	11.56	15.23%	15.73	15.73	15.73	20	2160
No. 111 2180	13.87%	11.56	11.56	11.56	13.87%	14.67	14.67	14.67	20	2180
No. 112 2200	14.83%	11.56	11.56	11.56	14.83%	20	20	20	20	2200
No. 113 2220	15.46%	11.56	11.56	11.56	15.46%	14.83	14.83	14.83	20	2220
No. 114 2240	16.9%	11.56	11.56	11.56	16.9%	15.46	15.46	15.46	20	2240
No. 115 2260	23.03%	11.56	11.56	11.56	23.03%	19.80	19.80	19.80	20	2260
No. 116 2280	21.87%	11.56	11.56	11.56	21.87%	20	20	20	20	2280
No. 117 2300	23.87%	11.56	11.56	11.56	23.87%	25.14	25.14	25.14	20	2300
No. 118 2320	21.87%	11.56	11.56	11.56	21.87%	19.68	19.68	19.68	20	2320
No. 119 2340	19.87%	11.56	11.56	11.56	19.87%	20.31	20.31	20.31	20	2340
No. 120 2360	17.87%	11.56	11.56	11.56	17.87%	14.57	14.57	14.57	20	2360
No. 121 2380	16.75%	11.56	11.56	11.56	16.75%	14.18	14.18	14.18	20	2380
No. 122 2400	15.87%	11.56	11.56	11.56	15.87%	14.25	14.25	14.25	20	2400
No. 123 2420	17.62%	11.56	11.56	11.56	17.62%	16.6	16.6	16.6	20	2420
No. 124 2440	18.50%	11.56	11.56	11.56	18.50%	20.26	20.26	20.26	20	2440
No. 125 2460	19.37%	11.56	11.56	11.56	19.37%	20.2	20.2	20.2	20	2460
No. 126 2480	18.17%	11.56	11.56	11.56	18.17%	16.24	16.24	16.24	20	2480
No. 127 2500	16.97%	11.56	11.56	11.56	16.97%	16.5	16.5	16.5	20	2500
No. 128 2520	18.97%	11.56	11.56	11.56	18.97%	17.12	17.12	17.12	20	2520
No. 129 2540	20.97%	11.56	11.56	11.56	20.97%	20.82	20.82	20.82	20	2540
No. 130 2560	22.97%	11.56	11.56	11.56	22.97%	23.49	23.49	23.49	20	2560
No. 131 2580	23.54%	11.56	11.56	11.56	23.54%	24.15	24.15	24.15	20	2580
No. 132 2600	24.11%	11.56	11.56	11.56	24.11%	23.94	23.94	23.94	20	2600
No. 133 2620	24.68%	11.56	11.56	11.56	24.68%	24.64	24.64	24.64	20	2620
No. 134 2640	25.25%	11.56	11.56	11.56	25.25%	25.34	25.34	25.34	20	2640
No. 135 2660	25.82%	11.56	11.56	11.56	25.82%	25.71	25.71	25.71	20	2660

P.I.	COORDINATES		DIST.	BEARING	T (M)	I	R (M)	Lc (M)	E	D	PC	PT
	NORTHING	EASTING										
ROAD-1												
PI-1D	19698.249	21650.514	401.23	S 80-29 E								
PI-1E	19631.962	22046.231	60.08	S 78-10 E								
PI-1F	19619.65	22105.035	515.26	S 80-15 E								
PI-1G	19532.409	22612.855										



SURVEYED BY:
MEGA PHILIPPINES, INC.
Block 3, Lot 14, Orchids cor. Rocas Streets, West
Fairview, Quezon City
Tel. Nos. 938-06-08 937-68-88 937-60-78
Loc. 1 to 12 Direct Line 938-71-18
Fax (632) 938-27-61

GEODETIC ENGINEER:
NICANOR VALENCIA ANDAYON
REG. NO. 3532 DATE: 03-20-87
LIC. NO. 7953671 DATE: 01-04-2K

PROJECT TITLE:
FARM TO MARKET ROADS
THE DEVELOPMENT OF AGRARIAN REFORM COMMUNITIES (ARC'S)
IN THE PROVINCE OF ISABELA
IN THE REPUBLIC OF THE PHILIPPINES

DATE SURVEYED:
Aug. 14-17, 2000

LOCATION:
Mingbag, Quezon, Isabela

FILE NAME:
M-1

CAD BY:
TALAHIB

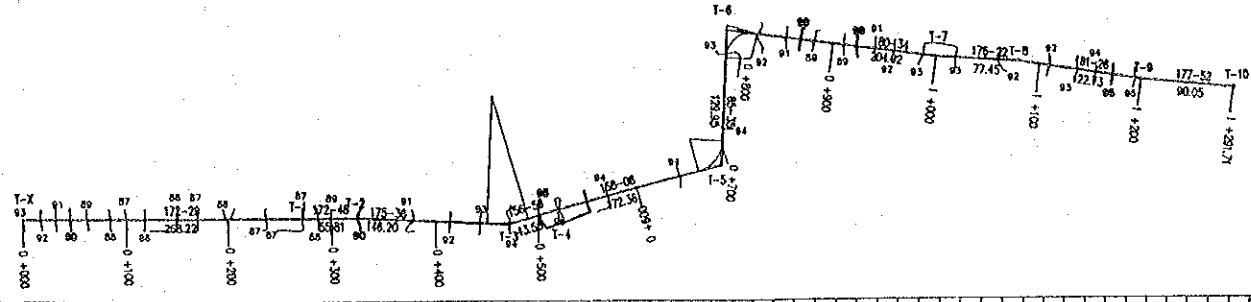
THE REPUBLIC OF THE PHILIPPINES THE STUDY ON THE DEVELOPMENT OF ARC'S
IN THE PROVINCE OF ISABELA

Road Profile (M-1) (2/2)

JAPAN INTERNATIONAL COOPERATION AGENCY

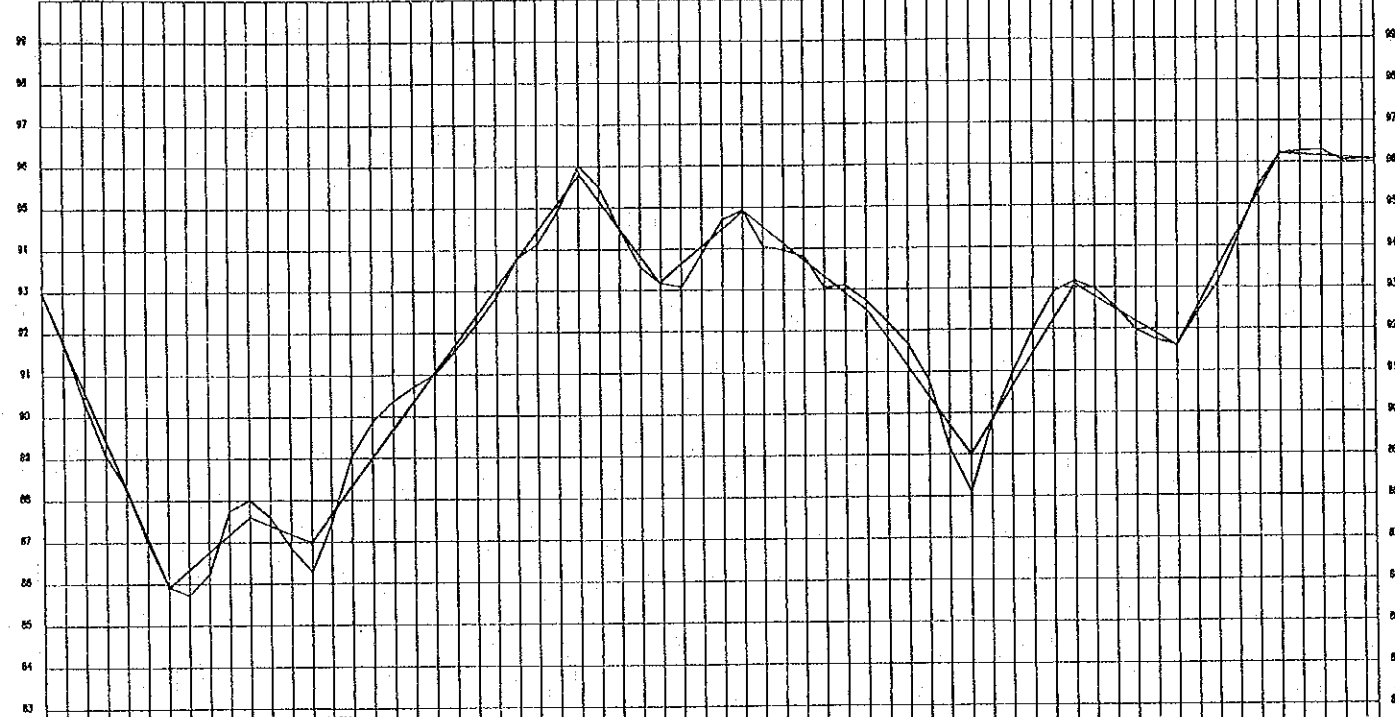
DWG
B-30

PI#	COORDINATES		DIST.	BEARING	T	I	R	Lc	E	D	PC	PT
	NORTHING	EASTING										
S-1												
T-1	9656.62	14922.24										
T-2	10122.53	14887.15	268.22	N 7-31 W								
T-3	10177.8	14880.16	55.81	N 7-12 W								
T-4	10323.67	14858.94	146.2	N 4-24 W	20.15	18-45	127	39.94	1.65	9.39	Sta. 0+ 450.00	Sta. 0+ 490.02
T-5	10363.74	14851.6	43.58	N 23-10 W								
T-6	10523.7	14787.6	172.36	N 21-52 W	23.57	72-33	32.12	40.67	7.72	35.68	Sta. 0+ 662.24	Sta. 0+ 702.91
T-7	10613.3345	14653.439	134.56	S 85-35 W	31.44	103-24	24.83	44.81	15.23	46.15	Sta. 0+ 787.46	Sta. 0+ 827.27
T-8	10718.6	14660.07	205.37	N 1-51 E								
T-9	10795.89	14655.16	77.45	N 3-38 W								
T-10	10918.58	14658.22	122.73	N 1-26 E								
T-11	11008.57	14654.88	90.05	N 2-8 W								



S-1

TOTAL DIST. OF S1 = 1,291.71 M.



		Propose		Actual		Accumulative Distance (m)	Distance (m)	Station Number
		Slope (%)	Left Field Elevation (m)	Right Field Elevation (m)	Road Surface Elevation (m)			
		0.00%	93.00	92.71	92.97	0	0	0+00
		-5.91%	91.82	91.75	91.78	93.00	91.8	0+20
		0.00%	90.63	90.60	90.60	90.63	90.35	0+40
		0.00%	89.45	89.42	89.42	89.45	89.08	0+60
		0.00%	88.27	88.24	88.24	88.27	87.99	0+80
		0.00%	87.08	87.05	87.05	87.08	86.82	0+100
		0.00%	85.90	85.87	85.87	85.90	85.92	0+120
		0.00%	84.72	84.69	84.69	84.72	84.75	0+140
		0.00%	83.54	83.51	83.51	83.54	83.57	0+160
		0.00%	82.36	82.33	82.33	82.36	82.39	0+180
		0.00%	81.18	81.15	81.15	81.18	81.21	0+200
		0.00%	80.00	79.97	79.97	80.00	80.03	0+220
		0.00%	78.82	78.79	78.79	78.82	78.85	0+240
		0.00%	77.64	77.61	77.61	77.64	77.67	0+260
		0.00%	76.46	76.43	76.43	76.46	76.49	0+280
		0.00%	75.28	75.25	75.25	75.28	75.31	0+300
		0.00%	74.10	74.07	74.07	74.10	74.13	0+320
		0.00%	72.92	72.89	72.89	72.92	72.95	0+340
		0.00%	71.74	71.71	71.71	71.74	71.77	0+360
		0.00%	70.56	70.53	70.53	70.56	70.59	0+380
		0.00%	69.38	69.35	69.35	69.38	69.41	0+400
		0.00%	68.20	68.17	68.17	68.20	68.23	0+420
		0.00%	67.02	66.99	66.99	67.02	67.05	0+440
		0.00%	65.84	65.81	65.81	65.84	65.87	0+460
		0.00%	64.66	64.63	64.63	64.66	64.69	0+480
		0.00%	63.48	63.45	63.45	63.48	63.51	0+500
		0.00%	62.30	62.27	62.27	62.30	62.33	0+520
		0.00%	61.12	61.09	61.09	61.12	61.15	0+540
		0.00%	59.94	59.91	59.91	59.94	59.97	0+560
		0.00%	58.76	58.73	58.73	58.76	58.79	0+580
		0.00%	57.58	57.55	57.55	57.58	57.61	0+600
		0.00%	56.40	56.37	56.37	56.40	56.43	0+620
		0.00%	55.22	55.19	55.19	55.22	55.25	0+640
		0.00%	54.04	54.01	54.01	54.04	54.07	0+660
		0.00%	52.86	52.83	52.83	52.86	52.89	0+680
		0.00%	51.68	51.65	51.65	51.68	51.71	0+700
		0.00%	50.50	50.47	50.47	50.50	50.53	0+720
		0.00%	49.32	49.29	49.29	49.32	49.35	0+740
		0.00%	48.14	48.11	48.11	48.14	48.17	0+760
		0.00%	46.96	46.93	46.93	46.96	46.99	0+780
		0.00%	45.78	45.75	45.75	45.78	45.81	0+800
		0.00%	44.60	44.57	44.57	44.60	44.63	0+820
		0.00%	43.42	43.39	43.39	43.42	43.45	0+840
		0.00%	42.24	42.21	42.21	42.24	42.27	0+860
		0.00%	41.06	41.03	41.03	41.06	41.09	0+880
		0.00%	39.88	39.85	39.85	39.88	39.91	0+900
		0.00%	38.70	38.67	38.67	38.70	38.73	0+920
		0.00%	37.52	37.49	37.49	37.52	37.55	0+940
		0.00%	36.34	36.31	36.31	36.34	36.37	0+960
		0.00%	35.16	35.13	35.13	35.16	35.19	0+980
		0.00%	33.98	33.95	33.95	33.98	34.01	1+000



SURVEYED BY:
MEGA PHILIPPINES, INC.
 Block 3, Lot 14, Orchids cor. Rocas Streets, West Fairview, Quezon city
 Tel. Nos. 936-06-06 937-66-96 937-66-78
 Loc. 1 to 12 Direct Line 938-71-18
 Fax (632) 938-27-61

GEODETIC ENGINEER:
NICANOR VALENCIA ANDAYON
 REG. NO. 3532 DATE: 03-20-87
 LIC. NO. 7953671 DATE: 01-04-2K

PROJECT TITLE:
FARM TO MARKET ROADS
 THE DEVELOPMENT OF AGRARIAN REFORM COMMUNITIES (ARC'S)
 IN THE PROVINCE OF ISABELA
 IN THE REPUBLIC OF THE PHILIPPINES

DATE SURVEYED:
 August 28-31,2000
LOCATION:
 San Manuel, Echague, Isabela

FILE NAME:
 S1
CAD BY:
 TALAHIB

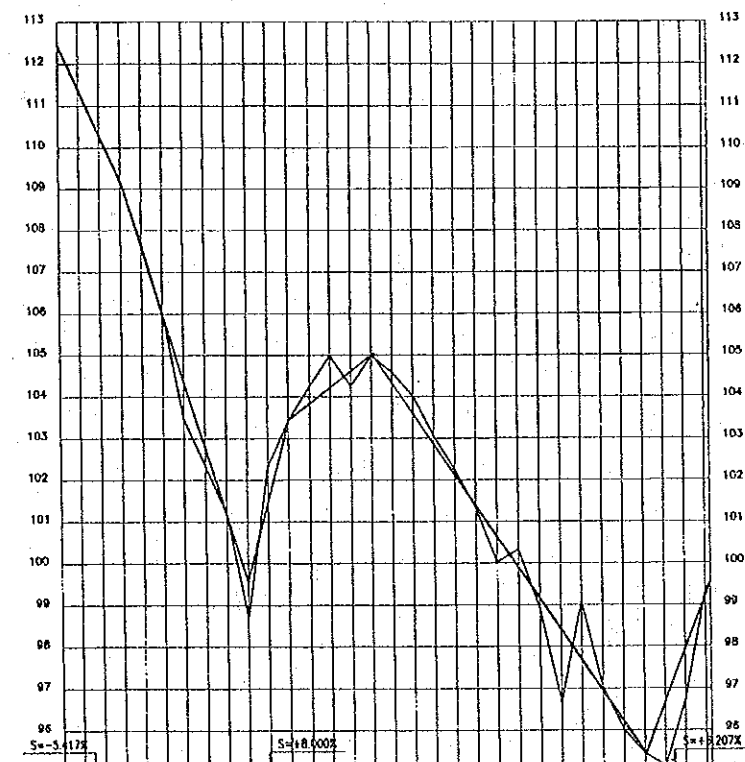
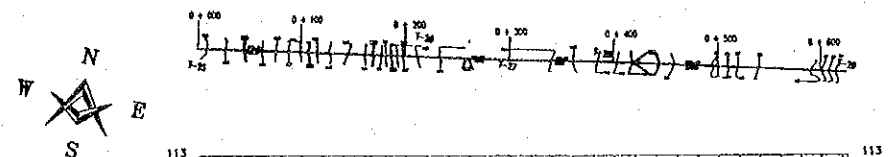
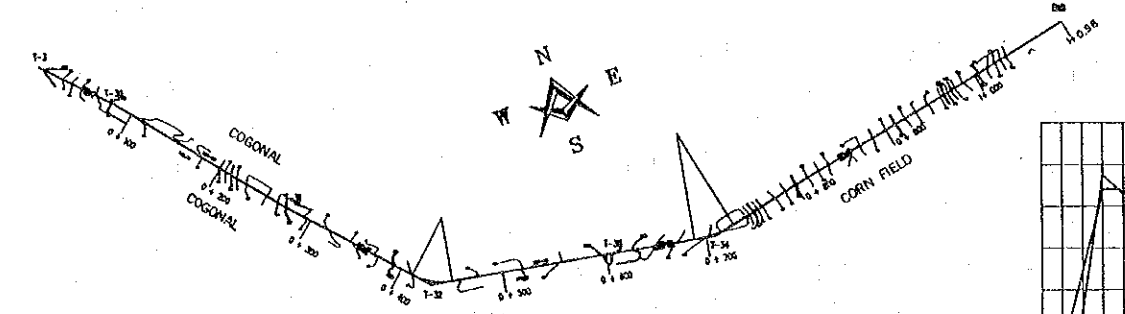
THE REPUBLIC OF THE PHILIPPINES THE STUDY ON THE DEVELOPMENT OF ARCS
 IN THE PROVINCE OF ISABELA

Road Profile (S-1)

DWG B-32

JAPAN INTERNATIONAL COOPERATION AGENCY

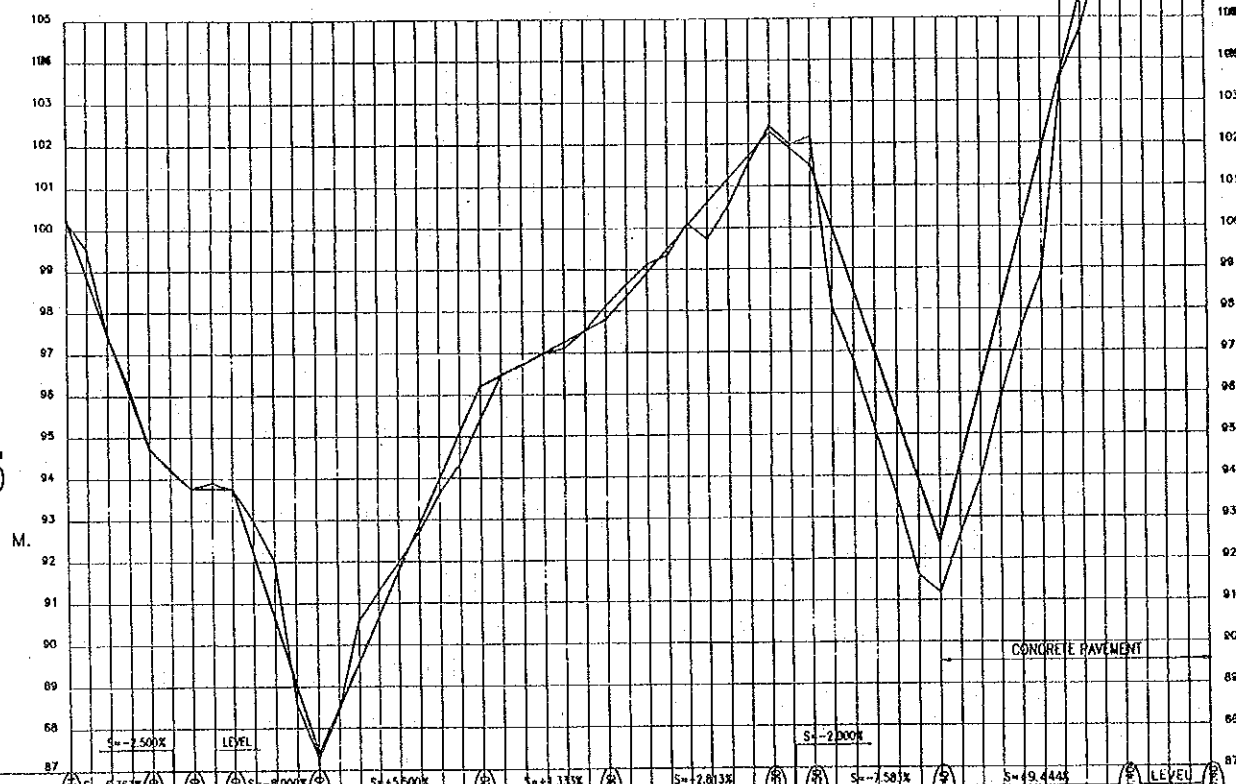
PI	COORDINATES		DIST.	REMARKS	T	I	R	Lc	E	D	PC	M
	NORTHING	EASTING										
S-3												
T-25	8807.04	18110.75										
T-26	8841.44	18324.7	216.7	H 80-52 E								
T-27	8854.82	18407.24	64.31	H 80-52 E								
T-28	8869.89	18491.02	64.44	H 79-43 E								
T-29	8906.71	18727.98	239.2	H 81-10 E								
S-5												
T-3	9139.27	15561.18										
T-30	9083.25	15418.5	78.74	S 44-39 E								
T-31	8928.03	15541.87	199.4	S 38-53 E								
T-32	8812.65	15643.99	154.21	S 41-34 E	20.84	37-38	61.17	40.18	3.45	18.73	Sta. 0+ 411.52	Sta. 0+ 451.69
T-33	8779.37	15818.43	177.58	S 79-12 E								
T-34	8759.99	15916.75	100.21	S 78-51 E	20.28	22-11	103.47	40.06	1.97	11.07	Sta. 0+ 688.35	Sta. 0+ 728.42
DND	8834.83	18299.57	390.03	H 78-58 E								



TOTAL DIST. OF S3 = 625.25 M.

S-5

TOTAL DIST. OF S5 = 1,099.98 M.



Hor. Scale 1 : 4000
Ver. Scale 1 : 100

Hor. Scale 1 : 4000
Ver. Scale 1 : 100

		Propose	Actual
	Left Field Elevation (m)	12.4512.42	12.4512.42
	Right Field Elevation (m)	11.3711.34	11.3711.34
	Road Surface Elevation (m)	10.2810.25	10.2810.25
	Left Field Elevation (m)	10.2810.25	10.2810.25
	Right Field Elevation (m)	10.2810.25	10.2810.25
	Road Surface Elevation (m)	10.2810.25	10.2810.25
Accumulative Distance (m)	0	0	0
Distance (m)	0	0	0
Station Number	No.0	No.0	No.0
	No.1	No.1	No.1
	No.2	No.2	No.2
	No.3	No.3	No.3
	No.4	No.4	No.4
	No.5	No.5	No.5
	No.6	No.6	No.6
	No.7	No.7	No.7
	No.8	No.8	No.8
	No.9	No.9	No.9
	No.10	No.10	No.10
	No.11	No.11	No.11
	No.12	No.12	No.12
	No.13	No.13	No.13
	No.14	No.14	No.14
	No.15	No.15	No.15
	No.16	No.16	No.16
	No.17	No.17	No.17
	No.18	No.18	No.18
	No.19	No.19	No.19
	No.20	No.20	No.20
	No.21	No.21	No.21
	No.22	No.22	No.22
	No.23	No.23	No.23
	No.24	No.24	No.24
	No.25	No.25	No.25
	No.26	No.26	No.26
	No.27	No.27	No.27
	No.28	No.28	No.28
	No.29	No.29	No.29
	No.30	No.30	No.30
	No.31	No.31	No.31
	No.32	No.32	No.32
	No.33	No.33	No.33
	No.34	No.34	No.34
	No.35	No.35	No.35
	No.36	No.36	No.36
	No.37	No.37	No.37
	No.38	No.38	No.38
	No.39	No.39	No.39
	No.40	No.40	No.40
	No.41	No.41	No.41
	No.42	No.42	No.42
	No.43	No.43	No.43
	No.44	No.44	No.44
	No.45	No.45	No.45
	No.46	No.46	No.46
	No.47	No.47	No.47
	No.48	No.48	No.48
	No.49	No.49	No.49
	No.50	No.50	No.50
	No.51	No.51	No.51
	No.52	No.52	No.52
	No.53	No.53	No.53
	No.54	No.54	No.54
	No.55	No.55	No.55

		Propose	Actual
	Slope (%)		
	Left Field Elevation (m)	100.21100.18	100.21100.18
	Right Field Elevation (m)	98.8598.83	98.8598.83
	Road Surface Elevation (m)	97.5197.48	97.5197.48
	Left Field Elevation (m)	96.1596.12	96.1596.12
	Right Field Elevation (m)	94.8094.77	94.8094.77
	Road Surface Elevation (m)	94.3394.27	94.3394.27
	Left Field Elevation (m)	93.8093.77	93.8093.77
	Right Field Elevation (m)	93.8093.77	93.8093.77
	Road Surface Elevation (m)	92.2392.17	92.2392.17
	Left Field Elevation (m)	89.0088.97	89.0088.97
	Right Field Elevation (m)	87.4687.37	87.4687.37
	Road Surface Elevation (m)	88.5088.47	88.5088.47
	Left Field Elevation (m)	90.7090.67	90.7090.67
	Right Field Elevation (m)	89.6089.57	89.6089.57
	Road Surface Elevation (m)	91.8091.77	91.8091.77
	Left Field Elevation (m)	92.9092.87	92.9092.87
	Right Field Elevation (m)	94.0093.97	94.0093.97
	Road Surface Elevation (m)	95.1095.07	95.1095.07
	Left Field Elevation (m)	96.2096.17	96.2096.17
	Right Field Elevation (m)	96.4796.44	96.4796.44
	Road Surface Elevation (m)	96.7096.67	96.7096.67
	Left Field Elevation (m)	97.2697.23	97.2697.23
	Right Field Elevation (m)	97.5197.48	97.5197.48
	Road Surface Elevation (m)	97.8497.77	97.8497.77
	Left Field Elevation (m)	98.3698.33	98.3698.33
	Right Field Elevation (m)	98.6398.60	98.6398.60
	Road Surface Elevation (m)	98.9898.95	98.9898.95
	Left Field Elevation (m)	100.05100.02	100.05100.02
	Right Field Elevation (m)	100.6100.58	100.6100.58
	Road Surface Elevation (m)	101.18101.15	101.18101.15
	Left Field Elevation (m)	101.74101.71	101.74101.71
	Right Field Elevation (m)	102.30102.27	102.30102.27
	Road Surface Elevation (m)	101.80101.81	101.80101.81
	Left Field Elevation (m)	101.50101.47	101.50101.47
	Right Field Elevation (m)	99.9499.95	99.9499.95
	Road Surface Elevation (m)	98.4798.44	98.4798.44
	Left Field Elevation (m)	95.4195.40	95.4195.40
	Right Field Elevation (m)	93.8493.84	93.8493.84
	Road Surface Elevation (m)	92.4192.37	92.4192.37
	Left Field Elevation (m)	94.2694.26	94.2694.26
	Right Field Elevation (m)	95.1895.16	95.1895.16
	Road Surface Elevation (m)	96.0796.04	96.0796.04
	Left Field Elevation (m)	96.9996.98	96.9996.98
	Right Field Elevation (m)	97.8497.82	97.8497.82
	Road Surface Elevation (m)	98.7198.69	98.7198.69
	Left Field Elevation (m)	99.6399.63	99.6399.63
	Right Field Elevation (m)	100.51100.51	100.51100.51
	Road Surface Elevation (m)	101.40101.41	101.40101.41
	Left Field Elevation (m)	102.30102.27	102.30102.27
	Right Field Elevation (m)	103.19103.17	103.19103.17
	Road Surface Elevation (m)	104.09104.07	104.09104.07
	Left Field Elevation (m)	104.99104.97	104.99104.97
	Right Field Elevation (m)	105.88105.85	105.88105.85
	Road Surface Elevation (m)	106.78106.75	106.78106.75
	Left Field Elevation (m)	107.68107.65	107.68107.65
	Right Field Elevation (m)	108.57108.54	108.57108.54
	Road Surface Elevation (m)	109.47109.44	109.47109.44
	Left Field Elevation (m)	110.37110.34	110.37110.34
	Right Field Elevation (m)	111.26111.23	111.26111.23
	Road Surface Elevation (m)	112.16112.13	112.16112.13



SURVEYED BY:
MEGA PHILIPPINES, INC.
Block 3, Lot 14, Orchids cor. Rocas Streets, West, Fairview, Quezon City.
Tel. Nos. 936-06-06 937-66-96 937-66-78
Loc. 1 to 12 Direct Line 936-71-18
Fax (632) 936-27-81

GEODETIC ENGINEER:
NICANOR VALENCIA ANDAYON
REG. NO. 3532 DATE: 03-20-87
LIC. NO. 7953671 DATE: 01-04-2K

PROJECT TITLE:
FARM TO MARKET ROADS
IN THE PROVINCE OF ISABELA
IN THE REPUBLIC OF THE PHILIPPINES

DATE SURVEYED:
August 28-31, 2000

LOCATION:
San Manuel, Echague, Isabela

FILE NAME:
S3 S5

CAD BY:
TALAHIB

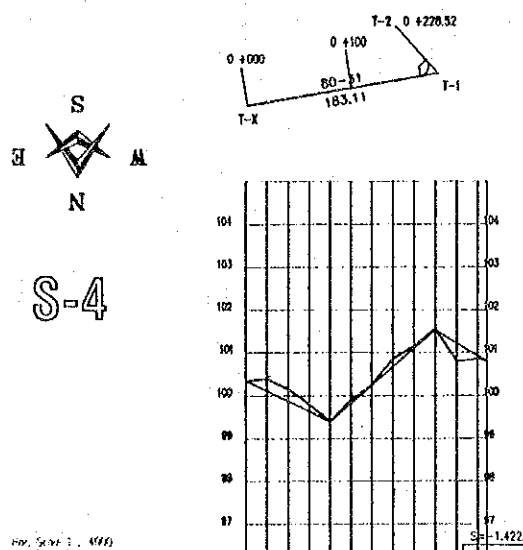
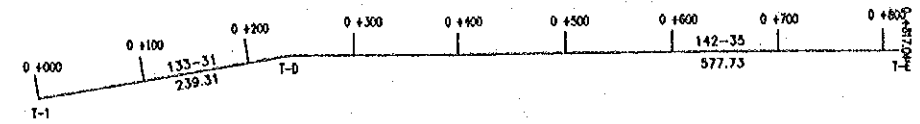
THE REPUBLIC OF THE PHILIPPINES THE STUDY ON THE DEVELOPMENT OF ARCS
IN THE PROVINCE OF ISABELA

Road Profile (S-3,S-5)

DWG
B-34

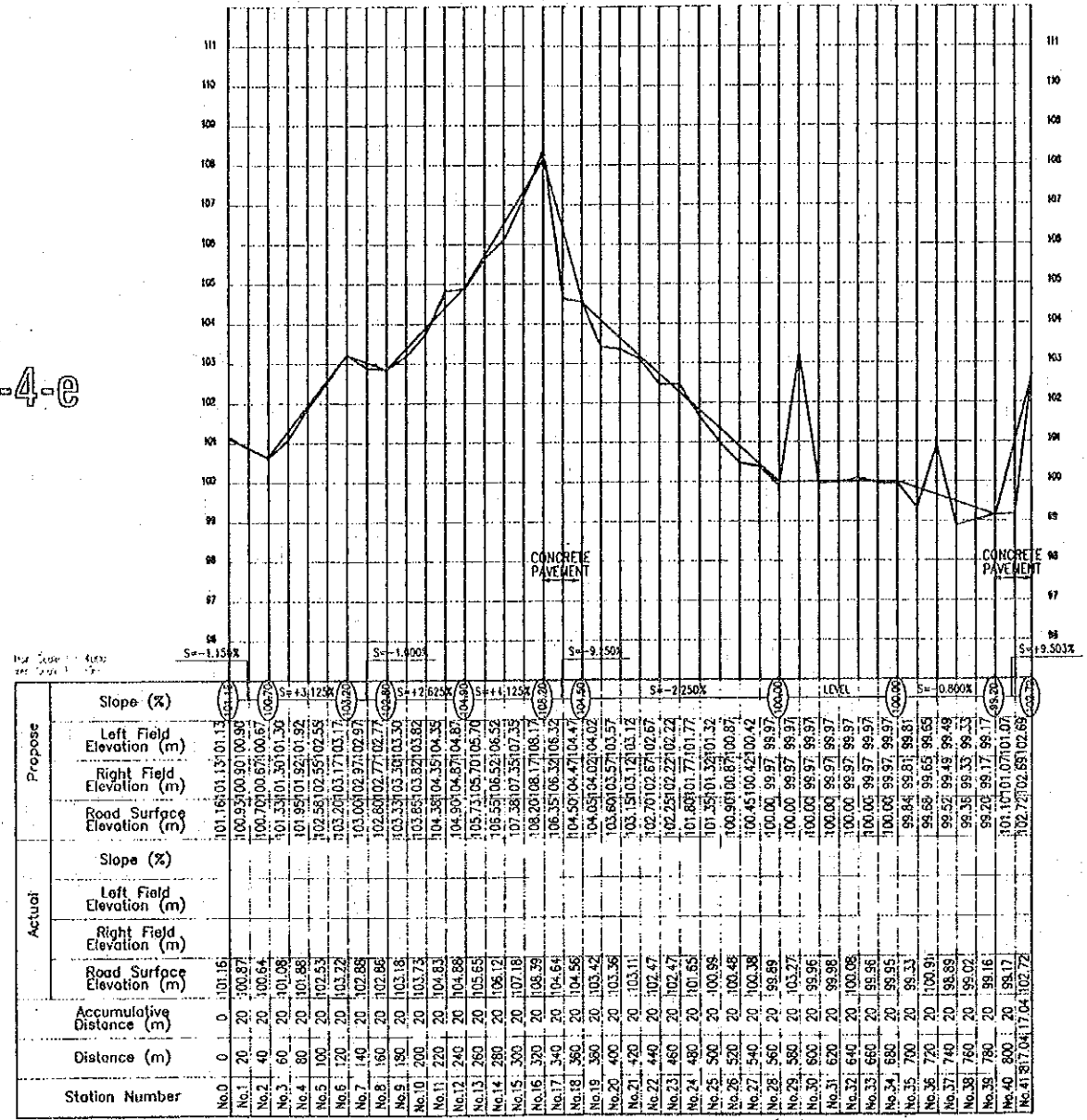
JAPAN INTERNATIONAL COOPERATION AGENCY

P.I.	COORDINATES		DST.	BEARING	T (m)	I (m)	R (m)	Lc (m)	E	D	PC	PT
	NORTHING	EASTING										
S-4-EXTENSION												
T-1	9826.4507	14741.6325	239.31	N 46-29 W								
T-D	9991.2313	14568.091	577.73	N 37-25 W								
T-E	10450.0864	14217.0583										



Station Number	Propose			Actual		
	Slope (%)	Left Field Elevation (m)	Right Field Elevation (m)	Slope (%)	Left Field Elevation (m)	Right Field Elevation (m)
No.0		100.24100.31100.31	100.11100.08100.08		100.34	100.34
No.1	S=-1.175%	99.87	99.84		100.4	100.15
No.2		99.84	99.61		100.15	100.15
No.3	S=+2.100%	99.45	99.37		100.15	100.15
No.4		99.85	99.75		100.25	100.25
No.5		100.24	100.21		100.25	100.25
No.6		100.65	100.63		100.25	100.25
No.7		101.04	101.01		100.8	100.8
No.8		101.55	101.47		100.8	100.8
No.9		101.94	101.81		100.8	100.8
No.10		102.22	102.10		100.8	100.8
No.11		102.51	102.39		100.8	100.8
No.12		102.80	102.68		100.8	100.8
No.13		103.09	102.97		100.8	100.8
No.14		103.38	103.26		100.8	100.8
No.15		103.67	103.55		100.8	100.8
No.16		103.96	103.84		100.8	100.8
No.17		104.25	104.13		100.8	100.8
No.18		104.54	104.42		100.8	100.8
No.19		104.83	104.71		100.8	100.8
No.20		105.12	105.00		100.8	100.8
No.21		105.41	105.29		100.8	100.8
No.22		105.70	105.58		100.8	100.8
No.23		105.99	105.87		100.8	100.8
No.24		106.28	106.16		100.8	100.8
No.25		106.57	106.45		100.8	100.8
No.26		106.86	106.74		100.8	100.8
No.27		107.15	107.03		100.8	100.8
No.28		107.44	107.32		100.8	100.8
No.29		107.73	107.61		100.8	100.8
No.30		108.02	107.90		100.8	100.8
No.31		108.31	108.19		100.8	100.8
No.32		108.60	108.48		100.8	100.8
No.33		108.89	108.77		100.8	100.8
No.34		109.18	109.06		100.8	100.8
No.35		109.47	109.35		100.8	100.8
No.36		109.76	109.64		100.8	100.8
No.37		110.05	109.93		100.8	100.8
No.38		110.34	110.22		100.8	100.8
No.39		110.63	110.51		100.8	100.8
No.40		110.92	110.80		100.8	100.8
No.41		111.21	111.09		100.8	100.8

S-4-e

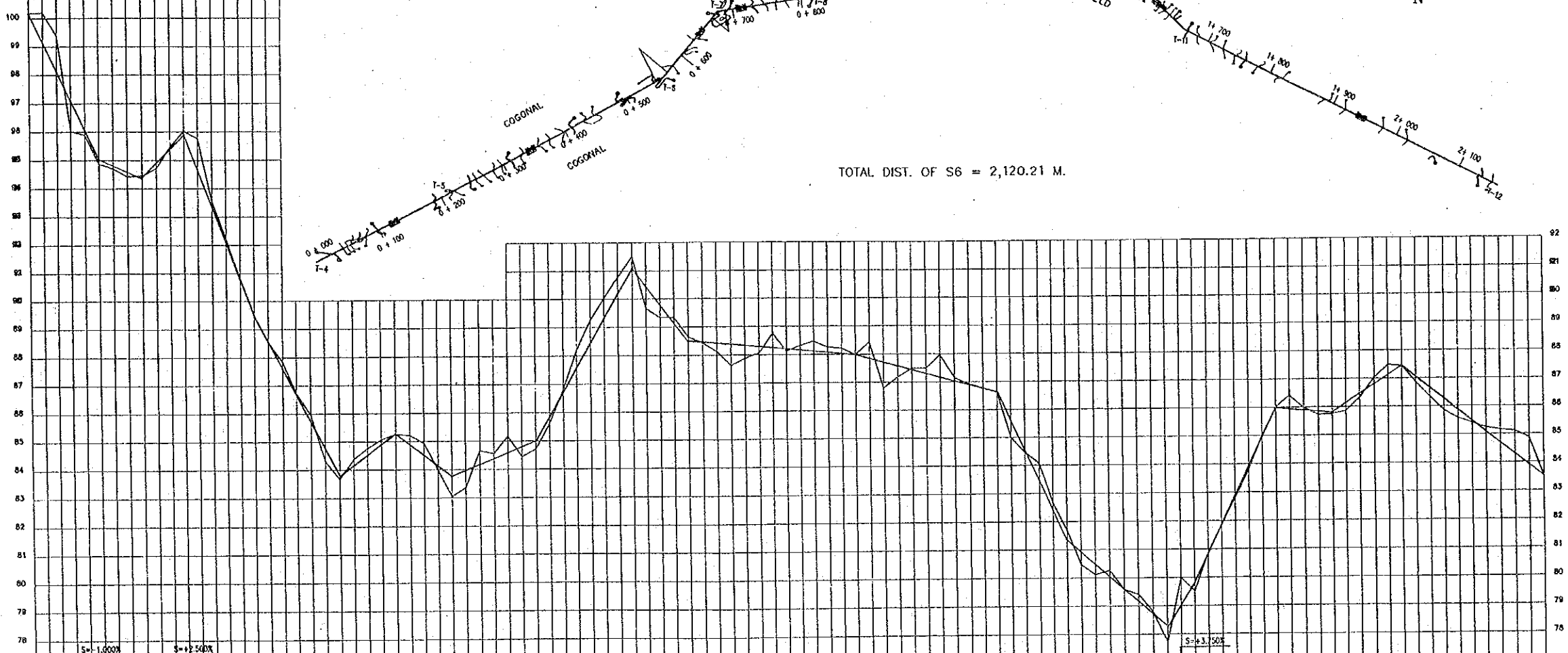


Station Number	Propose			Actual		
	Slope (%)	Left Field Elevation (m)	Right Field Elevation (m)	Slope (%)	Left Field Elevation (m)	Right Field Elevation (m)
No.0		101.16	101.13		101.16	101.16
No.1	S=-1.15%	100.93	100.90		101.16	101.16
No.2		100.70	100.67		101.16	101.16
No.3	S=-1.90%	100.47	100.44		101.16	101.16
No.4		100.24	100.21		101.16	101.16
No.5	S=-2.25%	100.01	99.98		101.16	101.16
No.6		99.78	99.75		101.16	101.16
No.7	S=+1.90%	99.55	99.52		101.16	101.16
No.8		99.32	99.29		101.16	101.16
No.9		99.09	99.06		101.16	101.16
No.10		98.86	98.83		101.16	101.16
No.11		98.63	98.60		101.16	101.16
No.12		98.40	98.37		101.16	101.16
No.13		98.17	98.14		101.16	101.16
No.14		97.94	97.91		101.16	101.16
No.15		97.71	97.68		101.16	101.16
No.16		97.48	97.45		101.16	101.16
No.17		97.25	97.22		101.16	101.16
No.18		97.02	96.99		101.16	101.16
No.19		96.79	96.76		101.16	101.16
No.20		96.56	96.53		101.16	101.16
No.21		96.33	96.30		101.16	101.16
No.22		96.10	96.07		101.16	101.16
No.23		95.87	95.84		101.16	101.16
No.24		95.64	95.61		101.16	101.16
No.25		95.41	95.38		101.16	101.16
No.26		95.18	95.15		101.16	101.16
No.27		94.95	94.92		101.16	101.16
No.28		94.72	94.69		101.16	101.16
No.29		94.49	94.46		101.16	101.16
No.30		94.26	94.23		101.16	101.16
No.31		94.03	94.00		101.16	101.16
No.32		93.80	93.77		101.16	101.16
No.33		93.57	93.54		101.16	101.16
No.34		93.34	93.31		101.16	101.16
No.35		93.11	93.08		101.16	101.16
No.36		92.88	92.85		101.16	101.16
No.37		92.65	92.62		101.16	101.16
No.38		92.42	92.39		101.16	101.16
No.39		92.19	92.16		101.16	101.16
No.40		91.96	91.93		101.16	101.16
No.41		91.73	91.70		101.16	101.16

<p>MEGA PHILIPPINES, INC. Block 3, Lot 14, Orchids cor. Rocas Streets, West, Fairview, Quezon city Tel. Nos. 938-06-06 937-66-96 937-66-78 Loc. 1 to 12 Direct Line 938-71-18 Fax (632) 938-27-61</p>	<p>SURVEYED BY:</p> <p>MEGANOR VALENCIA ANDAYON</p> <p>REG. NO. 3532 DATE: 03-20-87 LIC. NO. 7953671 DATE: 01-04-2X</p>	<p>PROJECT TITLE:</p> <p>FARM TO MARKET ROADS THE DEVELOPMENT OF AGRARIAN REFORM COMMUNITIES (ARC'S) IN THE PROVINCE OF ISABELA IN THE REPUBLIC OF THE PHILIPPINES</p>	<p>DATE SURVEYED:</p> <p>August 28-31, 2000</p>	<p>FILE NAME:</p> <p>S4</p>	<p>THE REPUBLIC OF THE PHILIPPINES THE STUDY ON THE DEVELOPMENT OF ARCS IN THE PROVINCE OF ISABELA</p> <p>Road Profile (S-4)</p> <p>JAPAN INTERNATIONAL COOPERATION AGENCY</p>
	<p>LOCATION:</p> <p>San Manuel, Isabela</p>	<p>CAD BY:</p> <p>TALAHIB</p>	<p>DWG</p> <p>B-35</p>		

PIV	COORDINATES		DIST.	BEARING	Y	I	R	Lc	E	D	PC	PT
	NORTHING	EASTING										
S-6												
T-4	8136.2	15342.41	202.5	S 30-24 W								
T-5	8973.21	15242.24	356.08	S 35-30 W								
T-6	8683.88	15034.72	121.14	S 13-34 W	10.35	22-5	53.02	20.43	1	21.81	Sta. 0+ 548.21	Sta. 0+ 568.85
T-7	8568.12	15006.3	139.77	S 54-16 W	11.14	40-42	30.04	21.34	2	38.15	Sta. 0+ 688.3	Sta. 0+ 689.64
T-8	8484.49	14892.84	234.82	S 34-13 E	14.76	88-29	15.18	23.41	5	75.59	Sta. 0+ 803.51	Sta. 0+ 828.97
T-9	8290.48	15224.77	546.2	S 87-1 W	20	121-14	11.28	23.83	11.69	101.77	Sta. 1+ 267.8	Sta. 1+ 50.6
T-10	8282.65	14479.31	83.43	N 72-14 W								
T-11	8287.51	14399.86	499.97	S 89-45 W								
T-12	8283.33	13999.89										

S-6



TOTAL DIST. OF S6 = 2,120.21 M.

Hor. Scale 1 : 4000
Ver. Scale 1 : 100

Propose	Slope (%)		Left Field Elevation (m)	Right Field Elevation (m)	Road Surface Elevation (m)
	Left	Right			
Actual	Left Field Elevation (m)	Right Field Elevation (m)	Left Field Elevation (m)	Right Field Elevation (m)	Road Surface Elevation (m)
	Left Field Elevation (m)	Right Field Elevation (m)	Left Field Elevation (m)	Right Field Elevation (m)	Road Surface Elevation (m)
Accumulative Distance (m)			Distance (m)		
Station Number					



SURVEYED BY:
MEGA PHILIPPINES, INC.
Back 3, Lot 14, Orchids cor. Rocas Streets, West,
Fairview, Quezon City
Tel. Nos. 938-06-06 937-66-96 937-66-78
Loc. 1 to 12 Direct Line 938-71-18
Fax (632) 938-27-61

GEODETIC ENGINEER:
NICANOR VALENCIA ANDAYON
REG. NO. 3532 DATE: 03-20-87
LIC. NO. 7953871 DATE: 01-04-2X

PROJECT TITLE:
FARM TO MARKET ROADS
THE DEVELOPMENT OF AGRARIAN REFORM COMMUNITIES (ARC'S)
IN THE PROVINCE OF ISABELA
IN THE REPUBLIC OF THE PHILIPPINES

DATE SURVEYED:
August 28-31, 2000
LOCATION:
San Manuel, Echague, Isabela
FILE NAME:
S6
CAD BY:
TALAHIB

THE REPUBLIC OF THE PHILIPPINES THE STUDY ON THE DEVELOPMENT OF ARC'S
IN THE PROVINCE OF ISABELA

Road Profile (S-6)

DWG
B-36

JAPAN INTERNATIONAL COOPERATION AGENCY

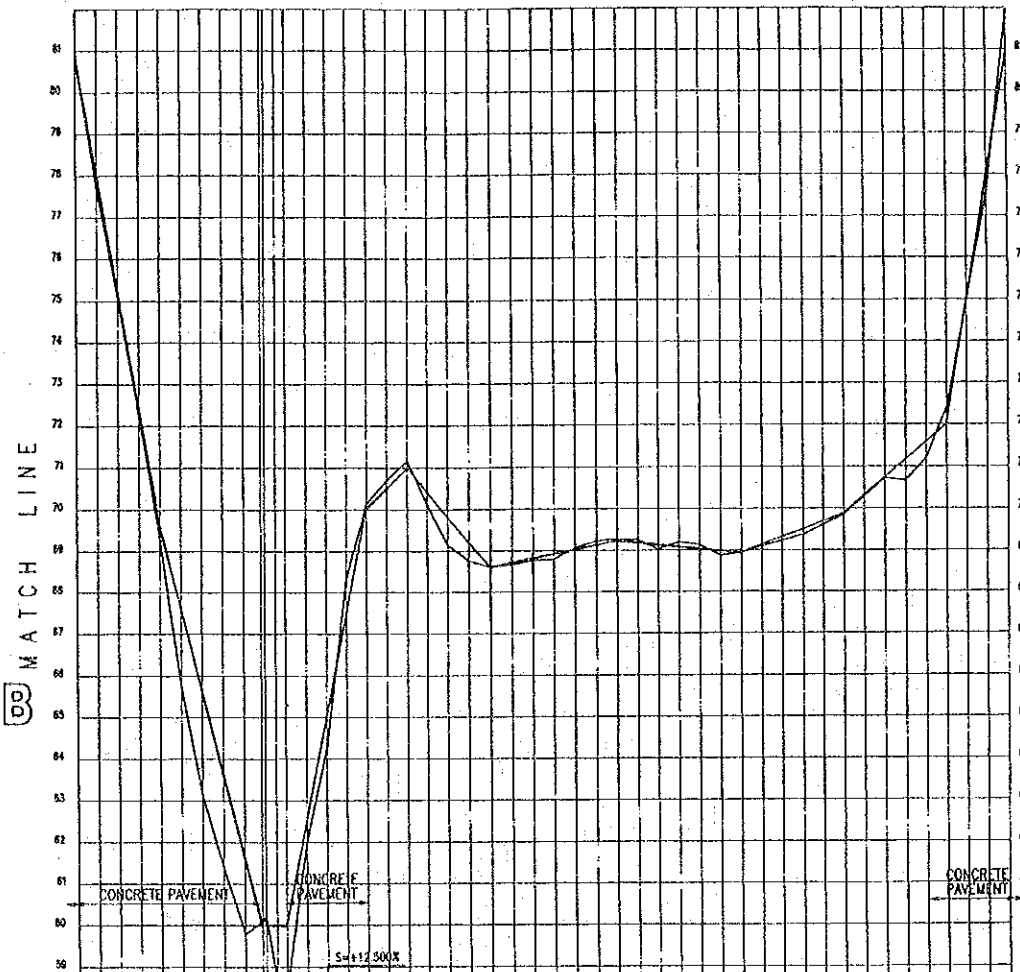
I-3-A



Hr. Scale 1 : 4000 Vr. Scale 1 : 100	
Propose	Actual
Slope (%)	Slope (%)
Left Field Elevation (m)	Left Field Elevation (m)
Right Field Elevation (m)	Right Field Elevation (m)
Road Surface Elevation (m)	Road Surface Elevation (m)
Accumulative Distance (m)	Accumulative Distance (m)
Distance (m)	Distance (m)
Station Number	Station Number

MATCH LINE

I-3-B



Hr. Scale 1 : 4000 Vr. Scale 1 : 100	
Propose	Actual
Slope (%)	Slope (%)
Left Field Elevation (m)	Left Field Elevation (m)
Right Field Elevation (m)	Right Field Elevation (m)
Road Surface Elevation (m)	Road Surface Elevation (m)
Accumulative Distance (m)	Accumulative Distance (m)
Distance (m)	Distance (m)
Station Number	Station Number

MATCH LINE



SURVEYED BY:
MEGA PHILIPPINES, INC.
Block 3, Lot 14, Orchids cor. Reyes Streets, West,
Fairview, Quezon City
Tel. Nos. 936-06-08 937-66-98 937-66-78
Loc. 1 to 12 Direct Line 938-71-18
Fax (632) 938-27-61

GEODETIC ENGINEER:
NICANOR VALENCIA ANDAYON
REG. NO. 3532 DATE: 03-20-87
LIC. NO. 7953671 DATE: 01-04-2K

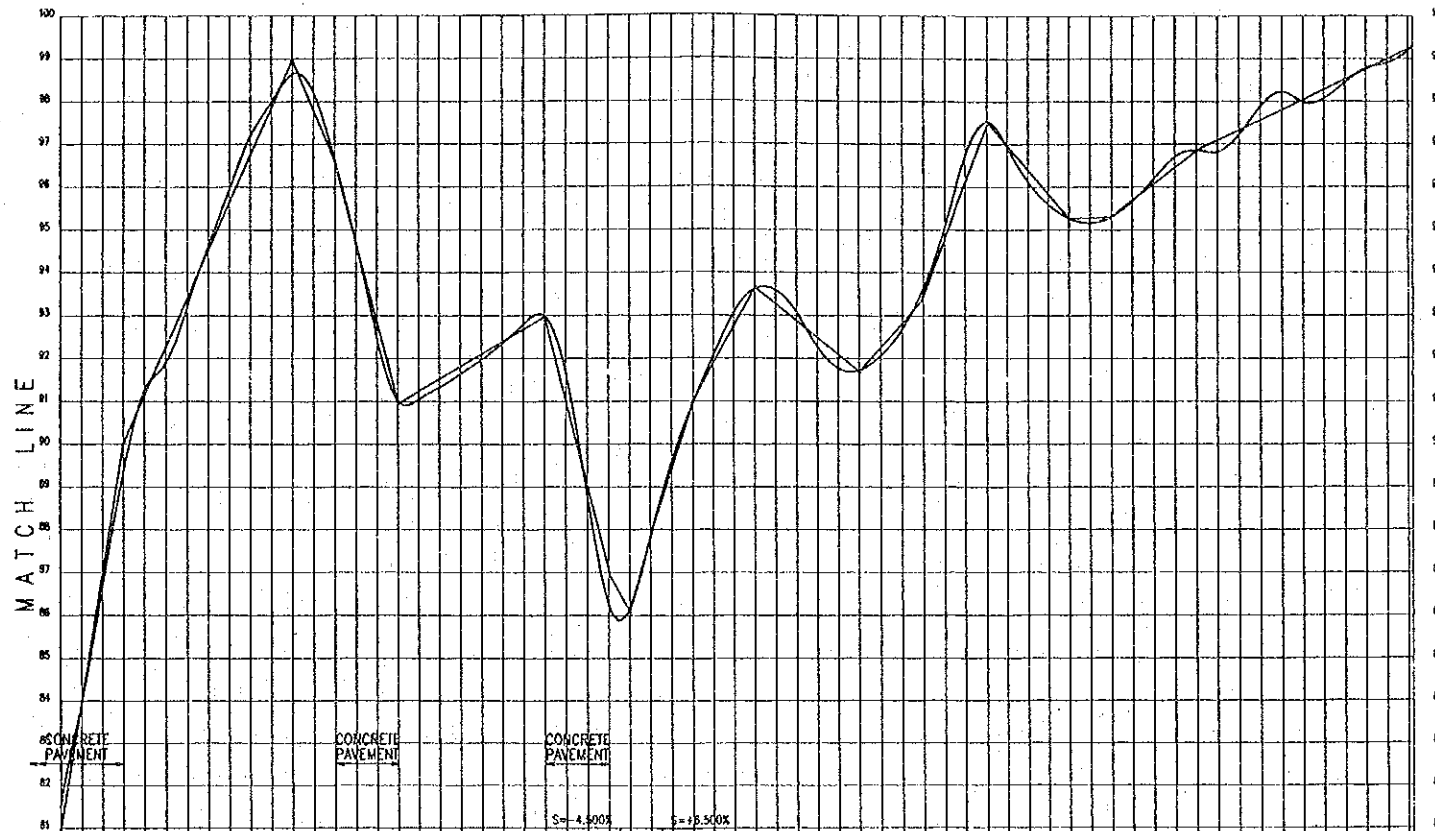
PROJECT TITLE:
FARM TO MARKET ROADS
THE DEVELOPMENT OF AGRARIAN REFORM COMMUNITIES (ARC'S)
IN THE PROVINCE OF ISABELA
IN THE REPUBLIC OF THE PHILIPPINES

DATE SURVEYED:
August 21-28, 2000
LOCATION:
Bo. La Suerte, Angadanan, Isabela

FILE NAME:
13
CAD BY:
TALAHIB

THE REPUBLIC OF THE PHILIPPINES THE STUDY ON THE DEVELOPMENT OF ARCS
IN THE PROVINCE OF ISABELA
Road Profile (I-3) (1/2)
JAPAN INTERNATIONAL COOPERATION AGENCY
DWG B-39

1-3-C



Station Number	Propose			Actual			Accumulative Distance (m)	Distance (m)	Slope (%)
	Left Field Elevation (m)	Right Field Elevation (m)	Road Surface Elevation (m)	Left Field Elevation (m)	Right Field Elevation (m)	Road Surface Elevation (m)			
No. 92 3100	81.00	80.95	80.95	81.97			20	81.97	S=+15.00%
No. 93 3120	84.00	83.95	83.95	83.76			20	83.76	S=+15.00%
No. 94 3140	87.00	86.95	86.95	86.75			20	86.75	S=+15.00%
No. 95 3160	90.00	89.95	89.95	89.47			20	89.47	S=+15.00%
No. 96 3180	91.13	91.08	91.08	91.62			20	91.62	S=+15.00%
No. 97 3200	92.25	92.20	92.20	91.62			20	91.62	S=+15.00%
No. 98 3220	93.38	93.33	93.33	93.27			20	93.27	S=+15.00%
No. 99 3240	94.50	94.45	94.45	94.64			20	94.64	S=+15.00%
No. 100 3260	95.63	95.58	95.58	95.93			20	95.93	S=+15.00%
No. 101 3280	96.75	96.70	96.70	97.31			20	97.31	S=+15.00%
No. 102 3300	97.88	97.83	97.83	97.95			20	97.95	S=+15.00%
No. 103 3320	99.00	98.95	98.95	98.87			20	98.87	S=+15.00%
No. 104 3340	97.80	97.75	97.75	98.45			20	98.45	S=+15.00%
No. 105 3360	96.60	96.55	96.55	96.61			20	96.61	S=+15.00%
No. 106 3380	94.70	94.65	94.65	94.79			20	94.79	S=+15.00%
No. 107 3400	92.80	92.75	92.75	92.35			20	92.35	S=+15.00%
No. 108 3420	90.90	90.85	90.85	90.68			20	90.68	S=+15.00%
No. 109 3440	91.20	91.15	91.15	91.08			20	91.08	S=+15.00%
No. 110 3460	91.50	91.45	91.45	91.32			20	91.32	S=+15.00%
No. 111 3480	91.80	91.75	91.75	91.64			20	91.64	S=+15.00%
No. 112 3500	92.10	92.05	92.05	91.96			20	91.96	S=+15.00%
No. 113 3520	92.40	92.35	92.35	92.34			20	92.34	S=+15.00%
No. 114 3540	92.70	92.65	92.65	92.76			20	92.76	S=+15.00%
No. 115 3560	93.00	92.95	92.95	92.94			20	92.94	S=+15.00%
No. 116 3580	91.00	90.95	90.95	92.01			20	92.01	S=+15.00%
No. 117 3600	89.00	88.95	88.95	88.78			20	88.78	S=+15.00%
No. 118 3620	87.00	86.95	86.95	86.73			20	86.73	S=+15.00%
No. 119 3640	86.10	86.05	86.05	85.94			20	85.94	S=+15.00%
No. 120 3660	87.40	87.35	87.35	87.87			20	87.87	S=+15.00%
No. 121 3680	88.70	88.65	88.65	88.69			20	88.69	S=+15.00%
No. 122 3700	90.00	89.95	89.95	91.01			20	91.01	S=+15.00%
No. 123 3720	91.23	91.18	91.18	92.03			20	92.03	S=+15.00%
No. 124 3740	92.47	92.42	92.42	93.16			20	93.16	S=+15.00%
No. 125 3760	93.70	93.65	93.65	93.72			20	93.72	S=+15.00%
No. 126 3780	93.30	93.25	93.25	93.67			20	93.67	S=+15.00%
No. 127 3800	92.90	92.85	92.85	93.15			20	93.15	S=+15.00%
No. 128 3820	92.50	92.45	92.45	92.22			20	92.22	S=+15.00%
No. 129 3840	92.10	92.05	92.05	91.71			20	91.71	S=+15.00%
No. 130 3860	91.70	91.65	91.65	91.69			20	91.69	S=+15.00%
No. 131 3880	92.27	92.22	92.22	92.03			20	92.03	S=+15.00%
No. 132 3900	92.83	92.78	92.78	92.64			20	92.64	S=+15.00%
No. 133 3920	93.40	93.35	93.35	93.56			20	93.56	S=+15.00%
No. 134 3940	94.77	94.72	94.72	94.97			20	94.97	S=+15.00%
No. 135 3960	96.13	96.08	96.08	96.89			20	96.89	S=+15.00%
No. 136 3980	97.50	97.45	97.45	97.83			20	97.83	S=+15.00%
No. 137 4000	96.93	96.88	96.88	96.95			20	96.95	S=+15.00%
No. 138 4020	96.35	96.30	96.30	96.07			20	96.07	S=+15.00%
No. 139 4040	95.78	95.73	95.73	95.56			20	95.56	S=+15.00%
No. 140 4060	95.20	95.15	95.15	95.24			20	95.24	S=+15.00%
No. 141 4080	95.25	95.20	95.20	95.11			20	95.11	S=+15.00%
No. 142 4100	95.30	95.25	95.25	95.29			20	95.29	S=+15.00%
No. 143 4120	95.70	95.65	95.65	95.63			20	95.63	S=+15.00%
No. 144 4140	96.10	96.05	96.05	96.18			20	96.18	S=+15.00%
No. 145 4160	96.50	96.45	96.45	96.78			20	96.78	S=+15.00%
No. 146 4180	96.90	96.85	96.85	96.92			20	96.92	S=+15.00%
No. 147 4200	97.14	97.09	97.09	96.71			20	96.71	S=+15.00%
No. 148 4220	97.37	97.32	97.32	97.17			20	97.17	S=+15.00%
No. 149 4240	97.61	97.56	97.56	97.95			20	97.95	S=+15.00%
No. 150 4260	97.85	97.80	97.80	98.38			20	98.38	S=+15.00%
No. 151 4280	98.08	98.03	98.03	97.88			20	97.88	S=+15.00%
No. 152 4300	98.32	98.27	98.27	98.03			20	98.03	S=+15.00%
No. 153 4320	98.56	98.51	98.51	98.25			20	98.25	S=+15.00%
No. 154 4340	98.79	98.74	98.74	98.45			20	98.45	S=+15.00%
No. 155 4360	99.03	98.98	98.98	98.85			20	98.85	S=+15.00%
No. 156 4380	99.27	99.22	99.22	98.64			20	98.64	S=+15.00%
No. 157 4400	99.32	99.27	99.27	98.44			20	98.44	S=+15.00%

Hor. Scale 1 : 4000
Ver. Scale 1 : 100



SURVEYED BY:
MEGA PHILIPPINES, INC.
Block 3, Lot 14, Orchids cor. Rocas Streets, West,
Fairview, Quezon city
Tel. Nos. 936-06-06 937-86-98 937-86-78
Loc. 1 to 12 Direct Line 936-71-18
Fax (632) 938-27-81

GEODETIC ENGINEER:
NICANOR VALENCIA ANDAYON
REG. NO. 3532 DATE: 03-20-87
LIC. NO. 7953871 DATE: 01-04-2K

PROJECT TITLE:
FARM TO MARKET ROADS
THE DEVELOPMENT OF AGRARIAN REFORM COMMUNITIES (ARC'S)
IN THE PROVINCE OF ISABELA
IN THE REPUBLIC OF THE PHILIPPINES

DATE SURVEYED:
21-28 Aug. 2K

LOCATION:
Bo. La Suerte, Angadanan, Isabela

FILE NAME:
13-14

CAD BY:
TALAHIB

THE REPUBLIC OF THE PHILIPPINES THE STUDY ON THE DEVELOPMENT OF ARCS
IN THE PROVINCE OF ISABELA

Road Profile (1-3) (2/2)

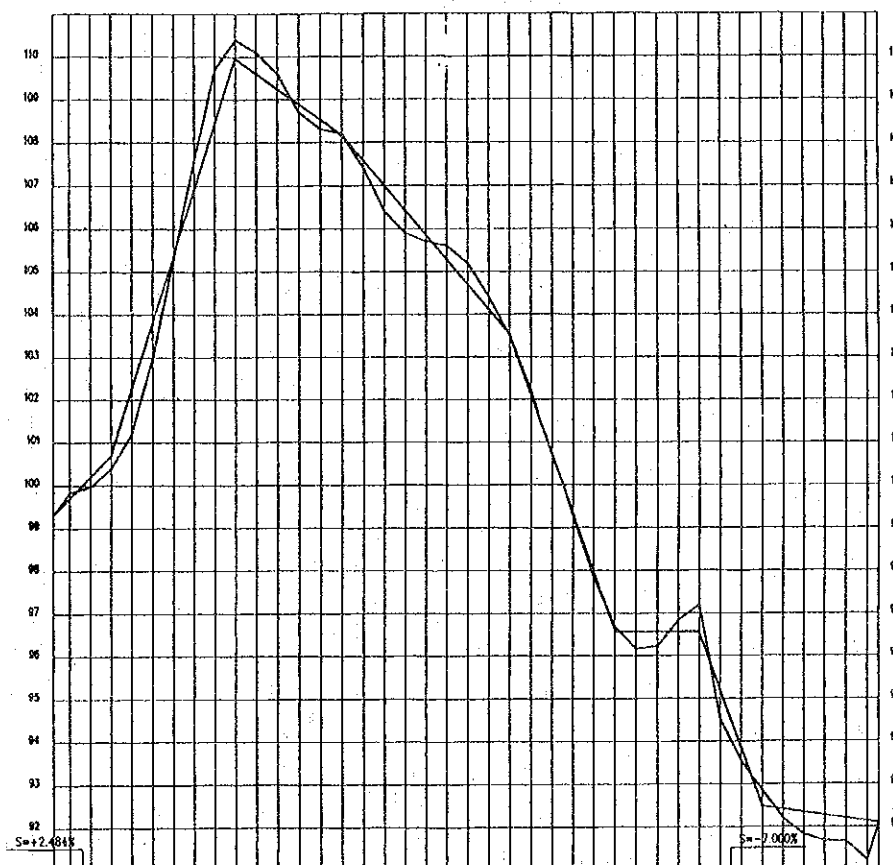
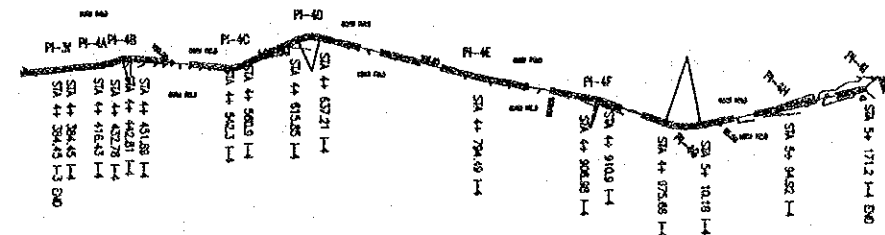
JAPAN INTERNATIONAL COOPERATION AGENCY

DWG
B-40

PI	COORDINATES		DIST.	BEARING	I M	I M	R M	Lc M	E	D	PC	PT
	NORTHING	EASTING										
I-4												
PI-3	21578.4148	23180.8236	40.18	N 44-10 E								
PI-4A	21607.233	23188.817	22.83	N 32-38 E								
PI-4B	21628.455	23201.127	104.51	N 54-38 E								
PI-4C	21867.01	23288.31	75.55	N 25-11 E								
PI-4D	21755.382	23318.44	188.37	N 63-23 E								
PI-4E	21830.835	23468.978	114.46	N 50-49 E								
PI-4F	21886.303	23587.81	84.59	N 68-21 E								
PI-4G	21918.535	23648.348	102.42	N 38-5 E								
PI-4H	22000.148	23708.518	78.28	N 38-8 E								
PI-4I	22041.782	23754.457										

I-4

TOTAL DIST. OF I-4 = 786.75 M.



Hor. Scale 1 : 4000
Ver. Scale 1 : 100

Station Number	Propose				Actual			
	Slope (%)	Left Field Elevation (m)	Right Field Elevation (m)	Road Surface Elevation (m)	Slope (%)	Left Field Elevation (m)	Right Field Elevation (m)	Road Surface Elevation (m)
No. 0 1394.45		99.32	99.29	99.28		99.32	99.29	99.28
No. 1 4400	7.75%	99.71	99.68	99.68		99.71	99.68	99.68
No. 2 4420		100.20	100.17	100.17		100.20	100.17	100.17
No. 3 4440		100.70	100.67	100.67		100.70	100.67	100.67
No. 4 4460		102.25	102.22	102.22		102.25	102.22	102.22
No. 5 4480		103.80	103.77	103.77		103.80	103.77	103.77
No. 6 4500		105.35	105.32	105.32		105.35	105.32	105.32
No. 7 4520		106.90	106.87	106.87		106.90	106.87	106.87
No. 8 4540		108.45	108.42	108.42		108.45	108.42	108.42
No. 9 4560		110.00	109.97	109.97		110.00	109.97	109.97
No. 10 4580		109.20	109.17	109.17		109.20	109.17	109.17
No. 11 4600		108.40	108.37	108.37		108.40	108.37	108.37
No. 12 4620		107.60	107.57	107.57		107.60	107.57	107.57
No. 13 4640		106.80	106.77	106.77		106.80	106.77	106.77
No. 14 4660		106.00	105.97	105.97		106.00	105.97	105.97
No. 15 4680		105.20	105.17	105.17		105.20	105.17	105.17
No. 16 4700		104.40	104.37	104.37		104.40	104.37	104.37
No. 17 4720		103.60	103.57	103.57		103.60	103.57	103.57
No. 18 4740		102.80	102.77	102.77		102.80	102.77	102.77
No. 19 4760		102.00	101.97	101.97		102.00	101.97	101.97
No. 20 4780		101.20	101.17	101.17		101.20	101.17	101.17
No. 21 4800		100.40	100.37	100.37		100.40	100.37	100.37
No. 22 4820		99.60	99.57	99.57		99.60	99.57	99.57
No. 23 4840		98.80	98.77	98.77		98.80	98.77	98.77
No. 24 4860		98.00	97.97	97.97		98.00	97.97	97.97
No. 25 4880		97.20	97.17	97.17		97.20	97.17	97.17
No. 26 4900		96.40	96.37	96.37		96.40	96.37	96.37
No. 27 4920		95.60	95.57	95.57		95.60	95.57	95.57
No. 28 4940		94.80	94.77	94.77		94.80	94.77	94.77
No. 29 4960		94.00	93.97	93.97		94.00	93.97	93.97
No. 30 4980		93.20	93.17	93.17		93.20	93.17	93.17
No. 31 5000		92.40	92.37	92.37		92.40	92.37	92.37
No. 32 5020		91.60	91.57	91.57		91.60	91.57	91.57
No. 33 5040		90.80	90.77	90.77		90.80	90.77	90.77
No. 34 5060		90.00	89.97	89.97		90.00	89.97	89.97
No. 35 5080		89.20	89.17	89.17		89.20	89.17	89.17
No. 36 5100		88.40	88.37	88.37		88.40	88.37	88.37
No. 37 5120		87.60	87.57	87.57		87.60	87.57	87.57
No. 38 5140		86.80	86.77	86.77		86.80	86.77	86.77
No. 39 5160		86.00	85.97	85.97		86.00	85.97	85.97
No. 40 5172		85.20	85.17	85.17		85.20	85.17	85.17



SURVEYED BY:
MEGA PHILIPPINES, INC.
Block 3, Lot 14, Orchids cor. Rocas Streets, West,
Fairview, Quezon city
Tel. Nos. 936-06-08 937-66-98 937-66-78
Loc. 1 to 12 Direct Line 938-71-18
Fax (632) 938-27-81

GEODETIC ENGINEER:
NICANOR VALENCIA ANDAYON
REG. NO. 3532 DATE: 03-20-87
LIC. NO. 7953871 DATE: 01-04-2K

PROJECT TITLE:
FARM TO MARKET ROADS
THE DEVELOPMENT OF AGRARIAN REFORM COMMUNITIES (ARC'S)
IN THE PROVINCE OF ISABELA
IN THE REPUBLIC OF THE PHILIPPINES

DATE SURVEYED:
21-28 Aug. 2K
LOCATION:
Bo. La Suerte, Angadanan, Isabela

FILE NAME:
14
CAD BY:
TALAHIB

THE REPUBLIC OF THE PHILIPPINES THE STUDY ON THE DEVELOPMENT OF ARCS
IN THE PROVINCE OF ISABELA

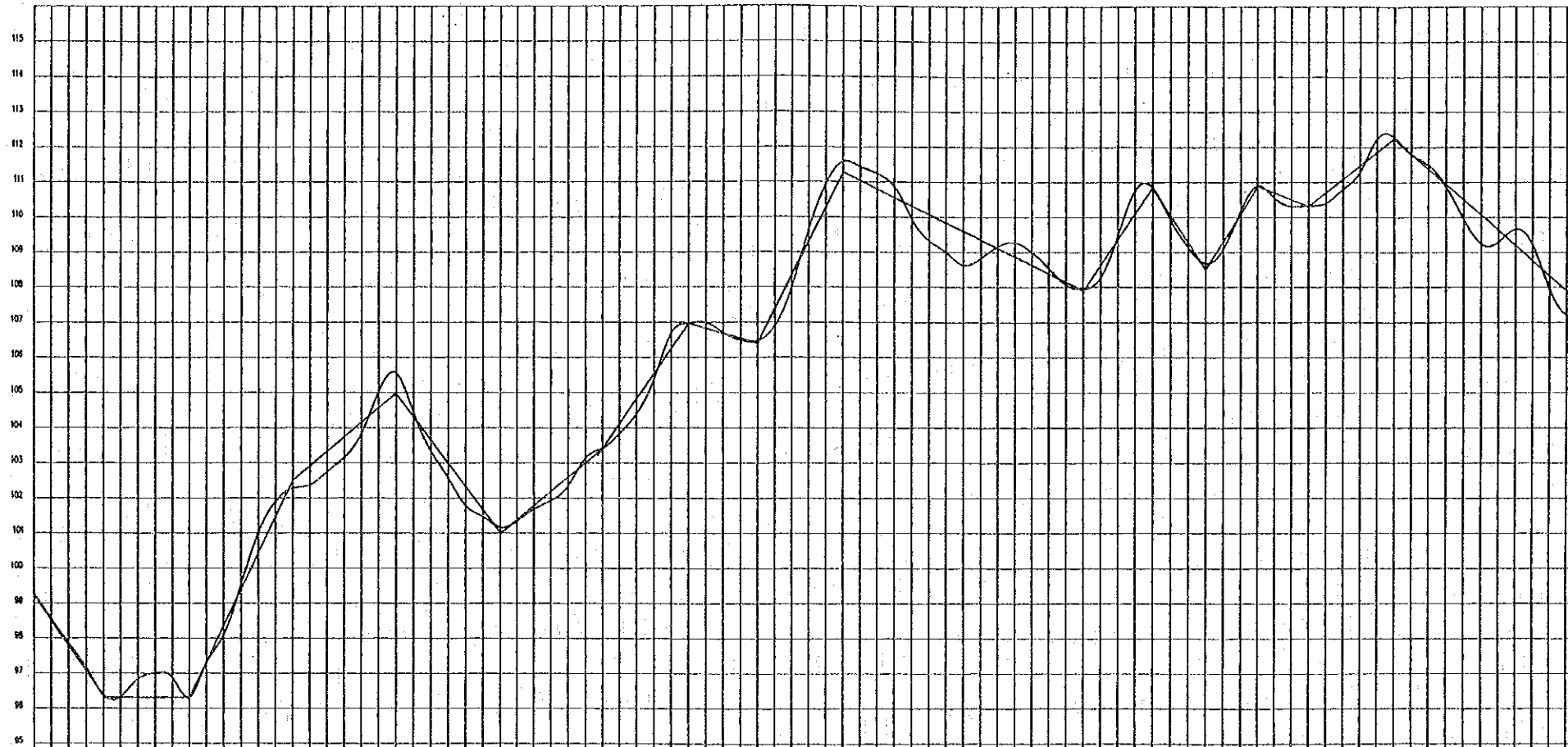
Road Profile (I-4)

DWG
IB-41

JAPAN INTERNATIONAL COOPERATION AGENCY

I-5-A

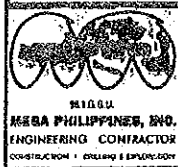
I-5-B



Hor. Scale 1 : 400
Ver. Scale 1 : 100

Station Number	Propose			Actual			Accumulative Distance (m)	Distance (m)
	Slope (%)	Left Field Elevation (m)	Right Field Elevation (m)	Slope (%)	Left Field Elevation (m)	Right Field Elevation (m)		
No. 0		99.37	99.29	99.28			0	0
No. 1	3.77%	98.87	98.54	98.54			20	20
No. 2		97.81	97.74	97.78			40	20
No. 3		97.08	97.03	97.03			60	20
No. 4		96.50	96.27	96.27			80	20
No. 5		96.30	96.27	96.27			100	20
No. 6		96.30	96.27	96.27			120	20
No. 7		96.30	96.27	96.27			140	20
No. 8		96.30	96.27	96.27			160	20
No. 9		96.30	96.27	96.27			180	20
No. 10		97.33	97.30	97.30			200	20
No. 11		98.37	98.34	98.34			220	20
No. 12		99.40	99.37	99.37			240	20
No. 13		100.43	100.40	100.40			260	20
No. 14		101.47	101.44	101.44			280	20
No. 15		102.50	102.47	102.47			300	20
No. 16		103.53	103.50	103.50			320	20
No. 17		104.56	104.53	104.53			340	20
No. 18		105.59	105.56	105.56			360	20
No. 19		106.62	106.59	106.59			380	20
No. 20		107.65	107.62	107.62			400	20
No. 21		108.68	108.65	108.65			420	20
No. 22		109.71	109.68	109.68			440	20
No. 23		110.74	110.71	110.71			460	20
No. 24		111.77	111.74	111.74			480	20
No. 25		112.80	112.77	112.77			500	20
No. 26		113.83	113.80	113.80			520	20
No. 27		114.86	114.83	114.83			540	20
No. 28		115.89	115.86	115.86			560	20
No. 29		116.92	116.89	116.89			580	20
No. 30		117.95	117.92	117.92			600	20
No. 31		118.98	118.95	118.95			620	20
No. 32		119.01	118.98	118.98			640	20
No. 33		120.04	119.01	119.01			660	20
No. 34		121.07	120.04	120.04			680	20
No. 35		122.10	121.07	121.07			700	20
No. 36		123.13	122.10	122.10			720	20
No. 37		124.16	123.13	123.13			740	20
No. 38		125.19	124.16	124.16			760	20
No. 39		126.22	125.19	125.19			780	20
No. 40		127.25	126.22	126.22			800	20
No. 41		128.28	127.25	127.25			820	20
No. 42		129.31	128.28	128.28			840	20
No. 43		130.34	129.31	129.31			860	20
No. 44		131.37	130.34	130.34			880	20
No. 45		132.40	131.37	131.37			900	20
No. 46		133.43	132.40	132.40			920	20
No. 47		134.46	133.43	133.43			940	20
No. 48		135.49	134.46	134.46			960	20
No. 49		136.52	135.49	135.49			980	20
No. 50		137.55	136.52	136.52			1000	20
No. 51		138.58	137.55	137.55			1020	20
No. 52		139.61	138.58	138.58			1040	20
No. 53		140.64	139.61	139.61			1060	20
No. 54		141.67	140.64	140.64			1080	20
No. 55		142.70	141.67	141.67			1100	20
No. 56		143.73	142.70	142.70			1120	20
No. 57		144.76	143.73	143.73			1140	20
No. 58		145.79	144.76	144.76			1160	20
No. 59		146.82	145.79	145.79			1180	20
No. 60		147.85	146.82	146.82			1200	20
No. 61		148.88	147.85	147.85			1220	20
No. 62		149.91	148.88	148.88			1240	20
No. 63		150.94	149.91	149.91			1260	20
No. 64		151.97	150.94	150.94			1280	20
No. 65		153.00	151.97	151.97			1300	20
No. 66		154.03	153.00	153.00			1320	20
No. 67		155.06	154.03	154.03			1340	20
No. 68		156.09	155.06	155.06			1360	20
No. 69		157.12	156.09	156.09			1380	20
No. 70		158.15	157.12	157.12			1400	20
No. 71		159.18	158.15	158.15			1420	20
No. 72		160.21	159.18	159.18			1440	20
No. 73		161.24	160.21	160.21			1460	20
No. 74		162.27	161.24	161.24			1480	20
No. 75		163.30	162.27	162.27			1500	20
No. 76		164.33	163.30	163.30			1520	20
No. 77		165.36	164.33	164.33			1540	20
No. 78		166.39	165.36	165.36			1560	20
No. 79		167.42	166.39	166.39			1580	20
No. 80		168.45	167.42	167.42			1600	20
No. 81		169.48	168.45	168.45			1620	20
No. 82		170.51	169.48	169.48			1640	20
No. 83		171.54	170.51	170.51			1660	20
No. 84		172.57	171.54	171.54			1680	20
No. 85		173.60	172.57	172.57			1700	20
No. 86		174.63	173.60	173.60			1720	20
No. 87		175.66	174.63	174.63			1740	20
No. 88		176.69	175.66	175.66			1760	20
No. 89		177.72	176.69	176.69			1780	20
No. 90		178.75	177.72	177.72			1800	20

MATCH LINE



SURVEYED BY:
MEGA PHILIPPINES, INC.
Block 3, Lot 14, Orchids cor. Rocas Streets, West,
Fairview, Quezon city
Tel. Nos. 936-06-08 937-86-98 937-66-78
Loc. 1 to 17 Direct Line 938-71-18
Fax (832) 938-27-81

GEODETIC ENGINEER:
NICANOR VALENCIA ANDAYON
REG. NO. 3532 DATE: 03-20-87
LIC. NO. 7951871 DATE: 01-04-2K

PROJECT TITLE:
FARM TO MARKET ROADS
THE DEVELOPMENT OF AGRARIAN REFORM COMMUNITIES (ARC'S)
IN THE PROVINCE OF ISABELA
IN THE REPUBLIC OF THE PHILIPPINES

DATE SURVEYED:
21-28 Aug. 2K
LOCATION:
Bo. La Suerte, Angadanan, Isabela

FILE NAME:
15
CAD BY:
TALAHIB

THE REPUBLIC OF THE PHILIPPINES THE STUDY ON THE DEVELOPMENT OF ARCS
IN THE PROVINCE OF ISABELA

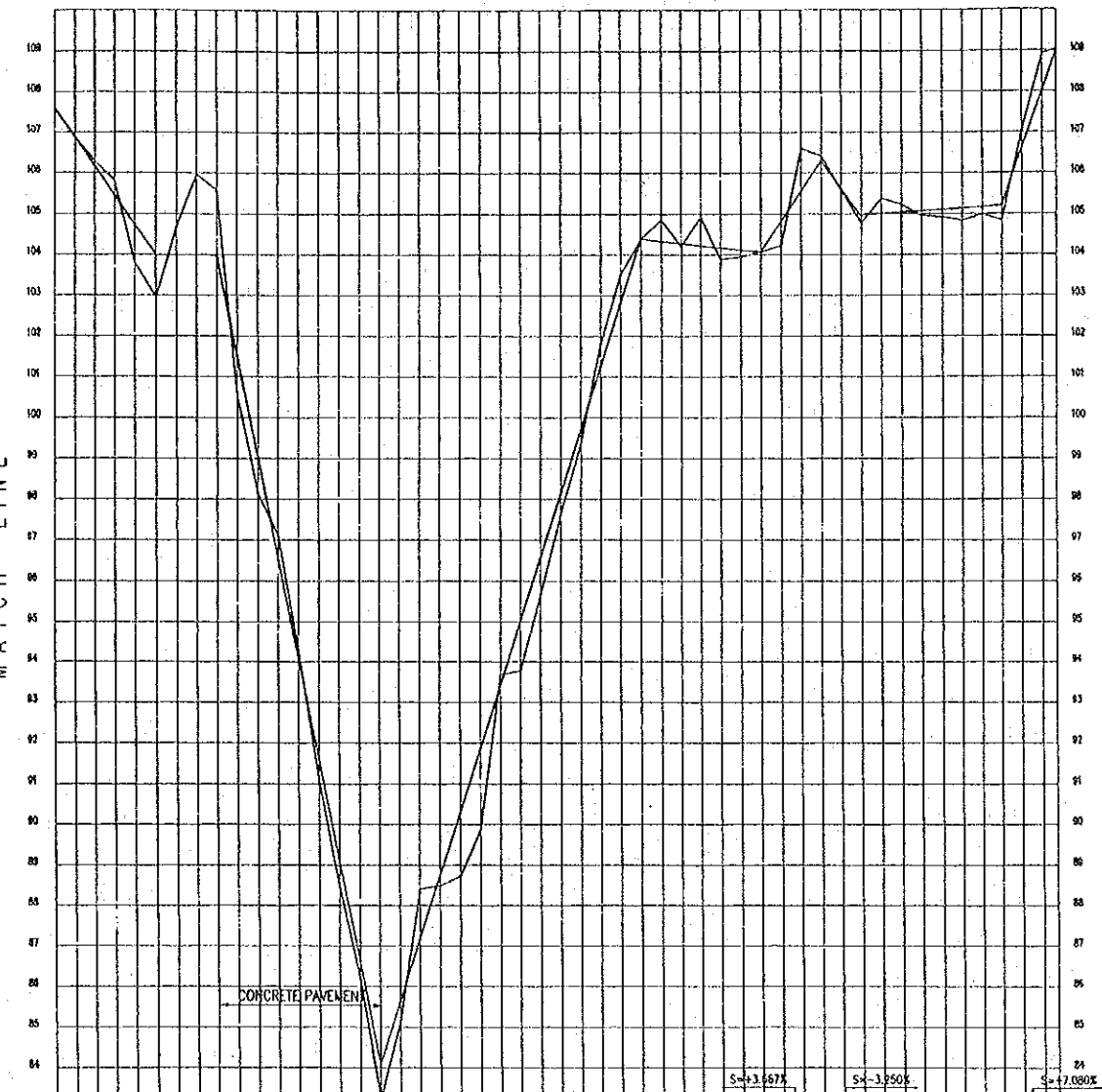
Road Profile (I-5) (1/2)

DWG B-42

JAPAN INTERNATIONAL COOPERATION AGENCY

1-5-B

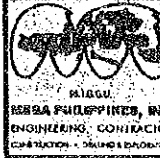
MATCH LINE



Hor. Scale 1 : 4000
Ver. Scale 1 : 100

Station Number	Propose				Actual			
	Slope (%)	Left Field Elevation (m)	Right Field Elevation (m)	Road Surface Elevation (m)	Slope (%)	Left Field Elevation (m)	Right Field Elevation (m)	Road Surface Elevation (m)
	No. 85-1800	107.580	107.580	106.685	106.685	107.580	107.580	106.685

PI#	COORDINATES		DST.	BEARING	T M	I	R M	Lc M	E	D	PC	PT
	NORTHING	EASTING										
R-1	23397.901	23797.578	ELEV.	111.271								



SURVEYED BY:
MEGA PHILIPPINES, INC.
Block 3, Lot 14, Orchids cor. Rocas Streets, West
Fairview, Quezon City
Tel. No. 938-06-06 937-66-96 937-66-78
Loc. 1 to 12 Direct Line 938-71-18
Fax (632) 938-27-61

GEODETIC ENGINEER:
NICANOR VALENCIA ANDAYON
REG. NO. 3532 DATE: 03-20-07
LIC. NO. 7953671 DATE: 01-04-2K

PROJECT TITLE:
FARM TO MARKET ROADS
THE DEVELOPMENT OF AGRARIAN REFORM COMMUNITIES (ARC'S)
IN THE PROVINCE OF ISABELA
IN THE REPUBLIC OF THE PHILIPPINES

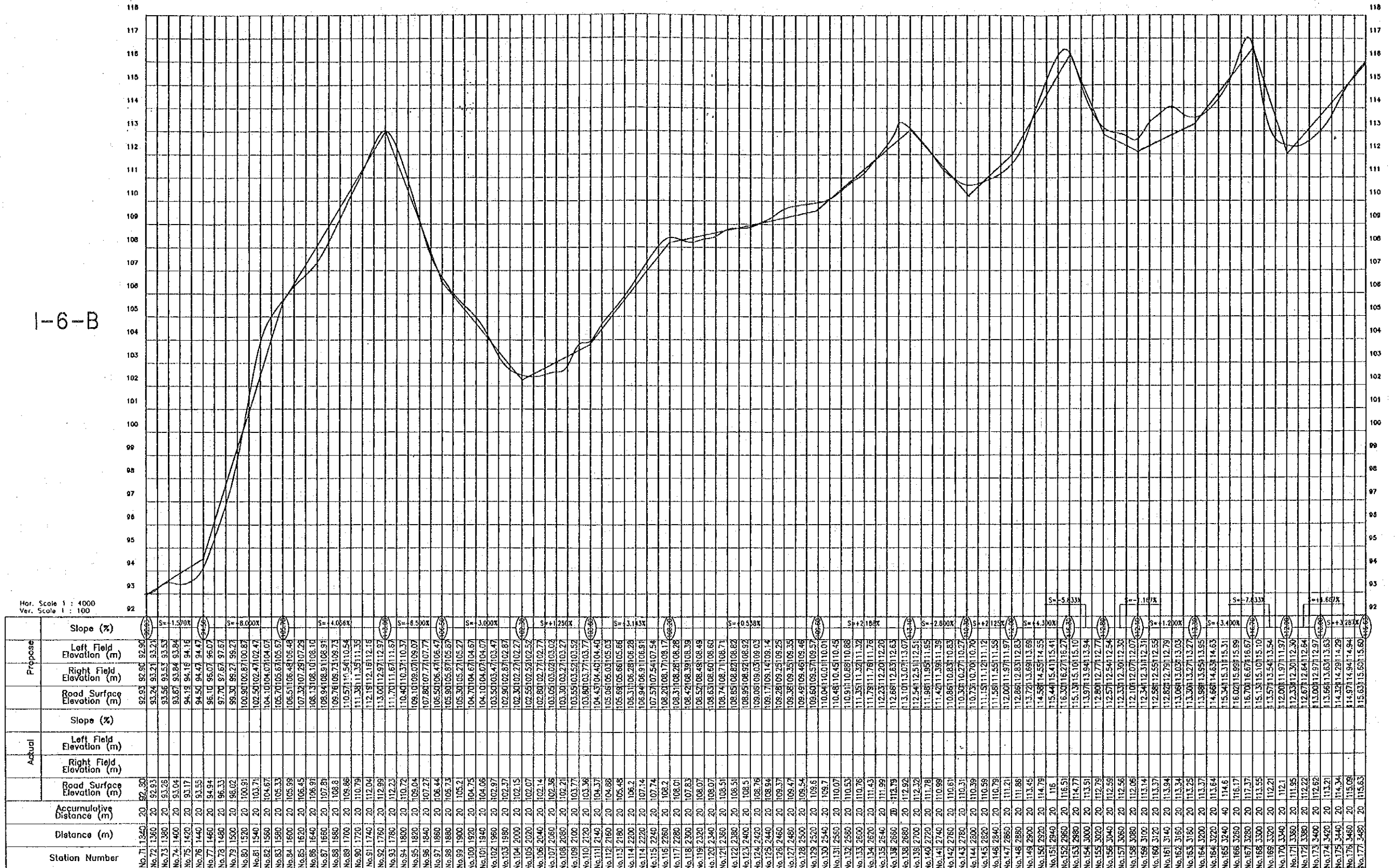
DATE SURVEYED:
August 21-28, 2000
LOCATION:
Bo. La Suerte, Angodanan, Isabela

FILE NAME:
15
CAD BY:
TALAHIB

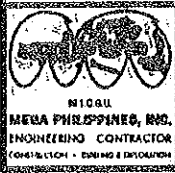
THE REPUBLIC OF THE PHILIPPINES THE STUDY ON THE DEVELOPMENT OF ARCS
IN THE PROVINCE OF ISABELA

Road Profile (1-5) (2/2)
DWG B-43
JAPAN INTERNATIONAL COOPERATION AGENCY

I-6-B



I-6A



SURVEYED BY:
MEGA PHILIPPINES, INC.
Block 3, Lot 14, Orchids cor. Rocas Streets, West,
Fairview, Quezon city
Tel. Nos. 938-06-06 937-66-96 937-66-78
Loc. 1 to 12 Direct Line 938-71-18
Fax (632) 938-27-61

GEODETTIC ENGINEER:
NICANOR VALENCIA ANDAYON
REG. NO. 3532 DATE: 03-20-87
LIC. NO. 7953671 DATE: 01-04-2K

PROJECT TITLE:
FARM TO MARKET ROADS
THE DEVELOPMENT OF AGRARIAN REFORM COMMUNITIES (ARC'S)
IN THE PROVINCE OF ISABELA
IN THE REPUBLIC OF THE PHILIPPINES

DATE SURVEYED:
Aug. 21-28, 2K
LOCATION:
Bo. San Vicente, Angondanon

FILE NAME:
16
CAD BY:
TALAHIB

THE REPUBLIC OF THE PHILIPPINES THE STUDY ON THE DEVELOPMENT OF ARCS
IN THE PROVINCE OF ISABELA

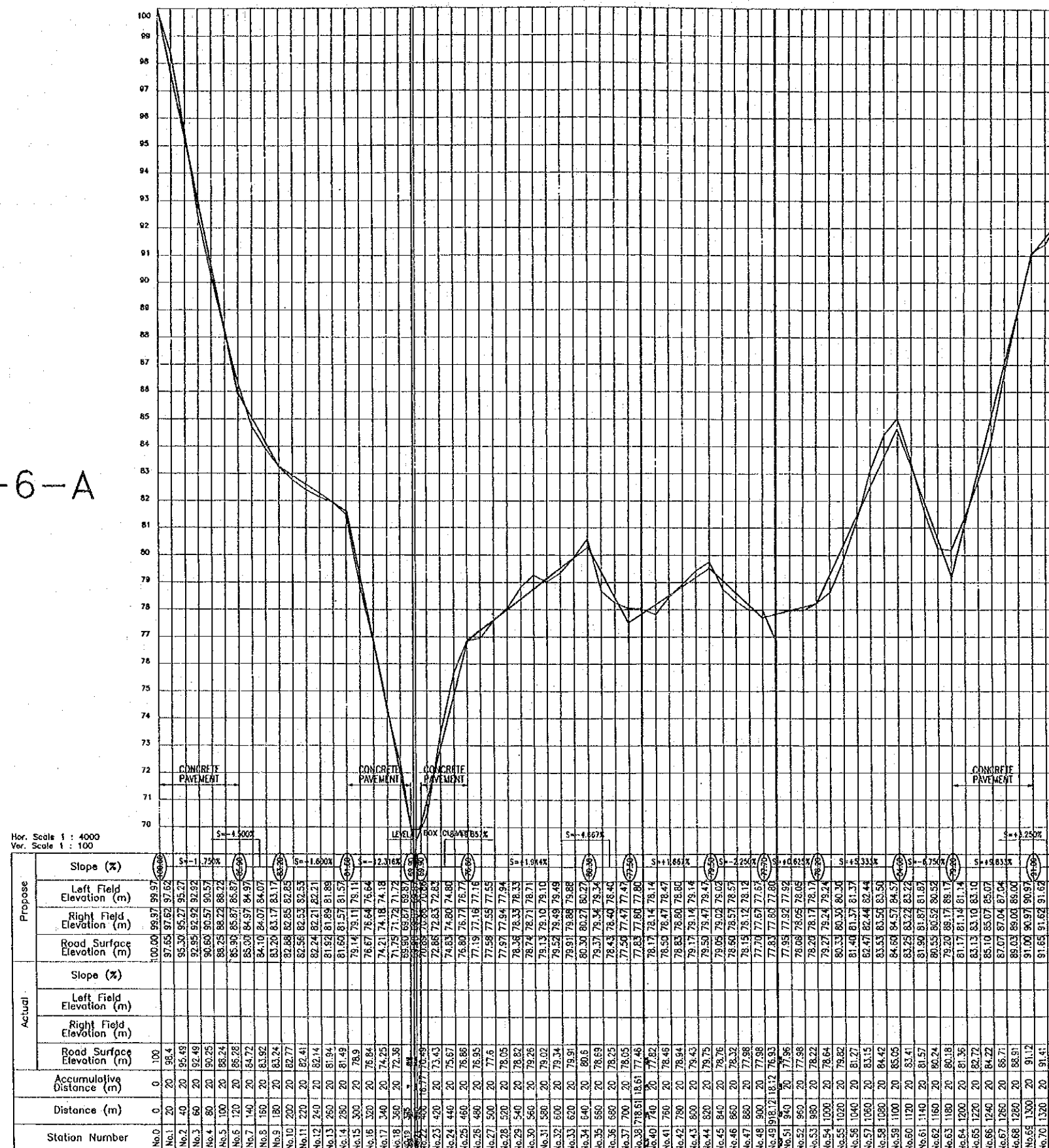
Road Profile (1-6) (1/2)

JAPAN INTERNATIONAL COOPERATION AGENCY

DWG B-44

1-6-A

1-6-B



Hor. Scale 1 : 4000
Ver. Scale 1 : 100

Station Number	Propose				Actual			
	Slope (%)	Left Field Elevation (m)	Right Field Elevation (m)	Road Surface Elevation (m)	Slope (%)	Left Field Elevation (m)	Right Field Elevation (m)	Road Surface Elevation (m)
No. 0		100.00	99.97	99.97				
No. 1	-1.73%	97.65	97.62	97.62				
No. 2		95.30	95.27	95.27				
No. 3		92.95	92.92	92.92				
No. 4		90.60	90.57	90.57				
No. 5		88.25	88.22	88.22				
No. 6		85.90	85.87	85.87				
No. 7		83.55	83.52	83.52				
No. 8		81.20	81.17	81.17				
No. 9		78.85	78.82	78.82				
No. 10		76.50	76.47	76.47				
No. 11		74.15	74.12	74.12				
No. 12		71.80	71.77	71.77				
No. 13		69.45	69.42	69.42				
No. 14		67.10	67.07	67.07				
No. 15		64.75	64.72	64.72				
No. 16		62.40	62.37	62.37				
No. 17		60.05	59.98	59.98				
No. 18		57.70	57.67	57.67				
No. 19		55.35	55.32	55.32				
No. 20		53.00	52.97	52.97				
No. 21		50.65	50.62	50.62				
No. 22		48.30	48.27	48.27				
No. 23		45.95	45.92	45.92				
No. 24		43.60	43.57	43.57				
No. 25		41.25	41.22	41.22				
No. 26		38.90	38.87	38.87				
No. 27		36.55	36.52	36.52				
No. 28		34.20	34.17	34.17				
No. 29		31.85	31.82	31.82				
No. 30		29.50	29.47	29.47				
No. 31		27.15	27.12	27.12				
No. 32		24.80	24.77	24.77				
No. 33		22.45	22.42	22.42				
No. 34		20.10	19.98	19.98				
No. 35		17.75	17.67	17.67				
No. 36		15.40	15.32	15.32				
No. 37		13.05	12.97	12.97				
No. 38		10.70	10.62	10.62				
No. 39		8.35	8.27	8.27				
No. 40		6.00	5.92	5.92				
No. 41		3.65	3.57	3.57				
No. 42		1.30	1.22	1.22				
No. 43		-1.05	-1.02	-1.02				
No. 44		-3.40	-3.37	-3.37				
No. 45		-5.75	-5.67	-5.67				
No. 46		-8.10	-7.98	-7.98				
No. 47		-10.45	-10.32	-10.32				
No. 48		-12.80	-12.67	-12.67				
No. 49		-15.15	-14.98	-14.98				
No. 50		-17.50	-17.32	-17.32				
No. 51		-19.85	-19.67	-19.67				
No. 52		-22.20	-21.98	-21.98				
No. 53		-24.55	-24.32	-24.32				
No. 54		-26.90	-26.67	-26.67				
No. 55		-29.25	-29.02	-29.02				
No. 56		-31.60	-31.42	-31.42				
No. 57		-33.95	-33.77	-33.77				
No. 58		-36.30	-36.12	-36.12				
No. 59		-38.65	-38.47	-38.47				
No. 60		-41.00	-40.78	-40.78				
No. 61		-43.35	-43.12	-43.12				
No. 62		-45.70	-45.47	-45.47				
No. 63		-48.05	-47.82	-47.82				
No. 64		-50.40	-50.17	-50.17				
No. 65		-52.75	-52.52	-52.52				
No. 66		-55.10	-54.87	-54.87				
No. 67		-57.45	-57.22	-57.22				
No. 68		-59.80	-59.58	-59.58				
No. 69		-62.15	-61.92	-61.92				
No. 70		-64.50	-64.32	-64.32				



SURVEYED BY:
MEGA PHILIPPINES, INC.
 Block 3, Lot 14, Orchide cor. Rocas Streets, West,
 Fairview, Quezon city
 Tel. Nos. 936-06-06 937-65-96 937-66-78
 Loc. 1 to 12 Direct Line 938-71-18
 Fax (832) 938-27-61

GEODETIC ENGINEER:
NICANOR VALENCIA ANDAYON
 REG. NO. 3532 DATE: 03-20-87
 LIC. NO. 7953671 DATE: 01-04-2K

PROJECT TITLE:
FARM TO MARKET ROADS
 THE DEVELOPMENT OF AGRARIAN REFORM COMMUNITIES (ARC'S)
 IN THE PROVINCE OF ISABELA
 IN THE REPUBLIC OF THE PHILIPPINES

DATE SURVEYED:
 August 21-28, 2000

LOCATION:
 Bo. Sn. Vicente, Angadanan, Isabela

FILE NAME:
 16

CAD BY:
 TALASHIB

THE REPUBLIC OF THE PHILIPPINES THE STUDY ON THE DEVELOPMENT OF ARCS
 IN THE PROVINCE OF ISABELA

Road Profile (1-6) (2/2) DWG B-45

JAPAN INTERNATIONAL COOPERATION AGENCY

JICA