

No. 2

JAPAN INTERNATIONAL COOPERATION AGENCY (JICA)
DEPARTMENT OF AGRARIAN REFORM (DAR)
REPUBLIC OF THE PHILIPPINES

**THE STUDY
ON THE DEVELOPMENT OF AGRARIAN
REFORM COMMUNITIES [ARCS]
IN THE PROVINCE OF ISABELA
IN THE REPUBLIC OF THE PHILIPPINES**

DRAWINGS

JANUARY 2001

JICA LIBRARY



J1161275(1)

SANYU CONSULTANTS INC.
I. C. NET LIMITED

A F A

J R

00-61

JAPAN INTERNATIONAL COOPERATION AGENCY (JICA)

DEPARTMENT OF AGRARIAN REFORM (DAR)

REPUBLIC OF THE PHILIPPINES

**THE STUDY
ON THE DEVELOPMENT OF AGRARIAN
REFORM COMMUNITIES [ARCS]
IN THE PROVINCE OF ISABELA
IN THE REPUBLIC OF THE PHILIPPINES**

DRAWINGS

JANUARY 2001

SANYU CONSULTANTS INC.

I. C. NET LIMITED



1161275 [1]

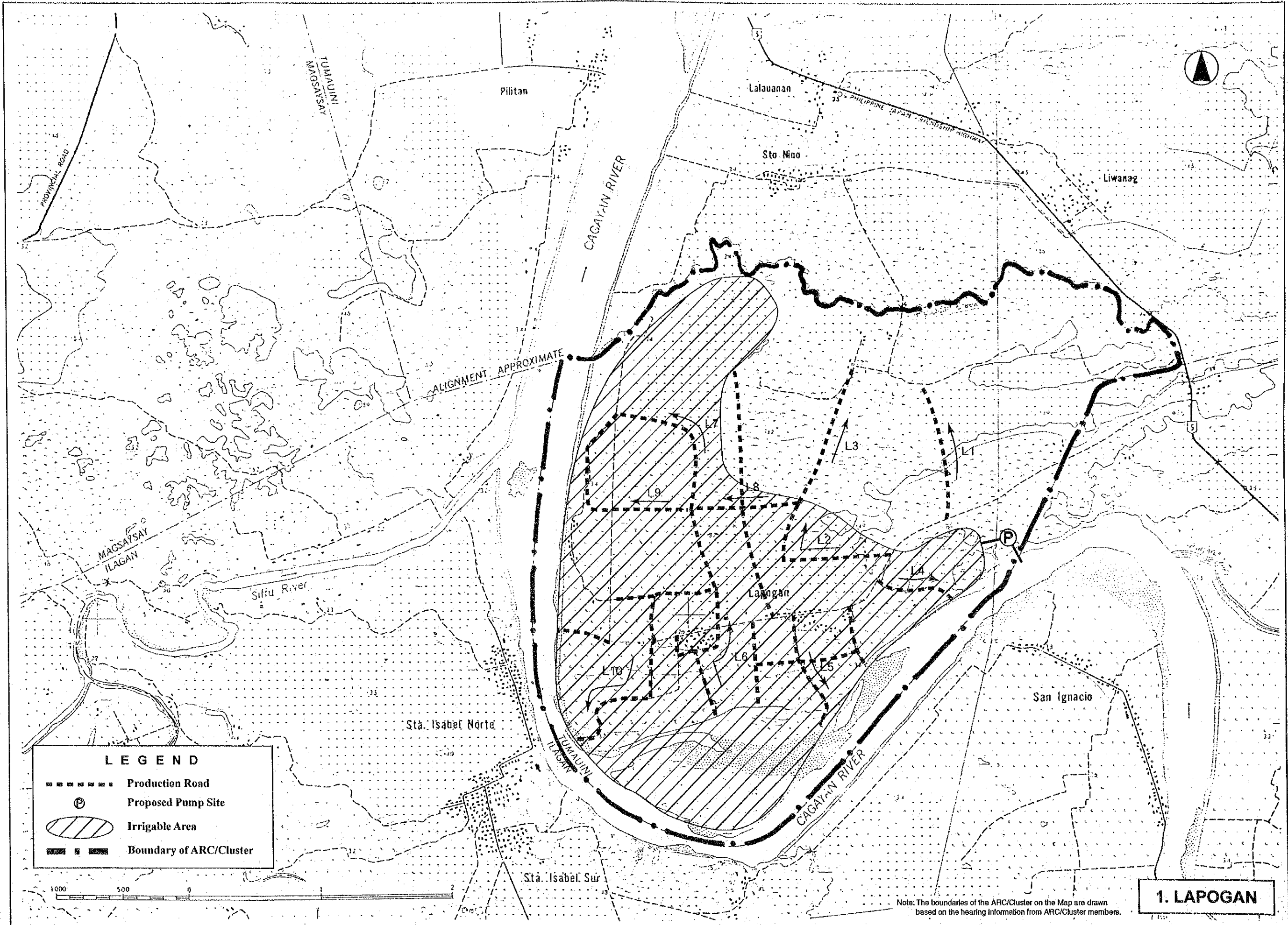
List of Attachment and Drawings for Master Plan

A. General Plan Maps

- A-1 Lapogan ARC (No. 1)
- A-2 Quling ARC (No. 2)
- A-3 San Manuel ARC (No. 4)
- A-4 San Miguel ARC (No. 5)
- A-5 Amulungan-Rizal ARC (No. 6)
- A-6 La Suerte Cluster (No. 7-1) in Isabela Settlement 1/2
- A-7 La Suerte Cluster (No. 7-1) in Isabela Settlement 2/2
- A-8 Dipasivi Cluster (No. 7-2) in Isabela Settlement
- A-9 Cenea Cluster (No. 7-3) in Isabela Settlement
- A-10 Minagbag ARC (No. 8)
- A-11 Cabaruan ARC (No. 9)
- A-12 Capirpiriwan ARC (No. 10)
- A-13 Fermeldy ARC (No. 11)
- A-14 Luzon ARC (No. 12) and Canan ARC (No. 15)
- A-15 Progresso ARC (No. 13)
- A-16 Yeban Norte/Benito Soliven ARC (No. 14)
- A-17 Andarayan ARC (No. 16)
- A-18 Bantug Petines ARC (No. 17)
- A-19 Dalena & Simanu ARC (No. 18) 1/2
- A-20 Dalena & Simanu ARC (No. 18) 2/2
- A-21 Dammao ARC (No. 19)
- A-22 San Miguel Burgos ARC (No. 20)
- A-23 San Roman ARC (No. 21)
- A-24 Viola Estate Cluster (No. 22)

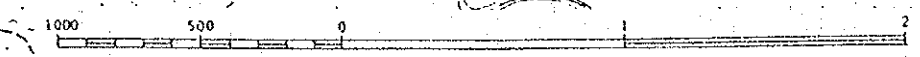
B. Drawings

- B-1 Solar Dryer
- B-2 Warehouse
- B-3 Farm-to-market Road
- B-4 Bridge



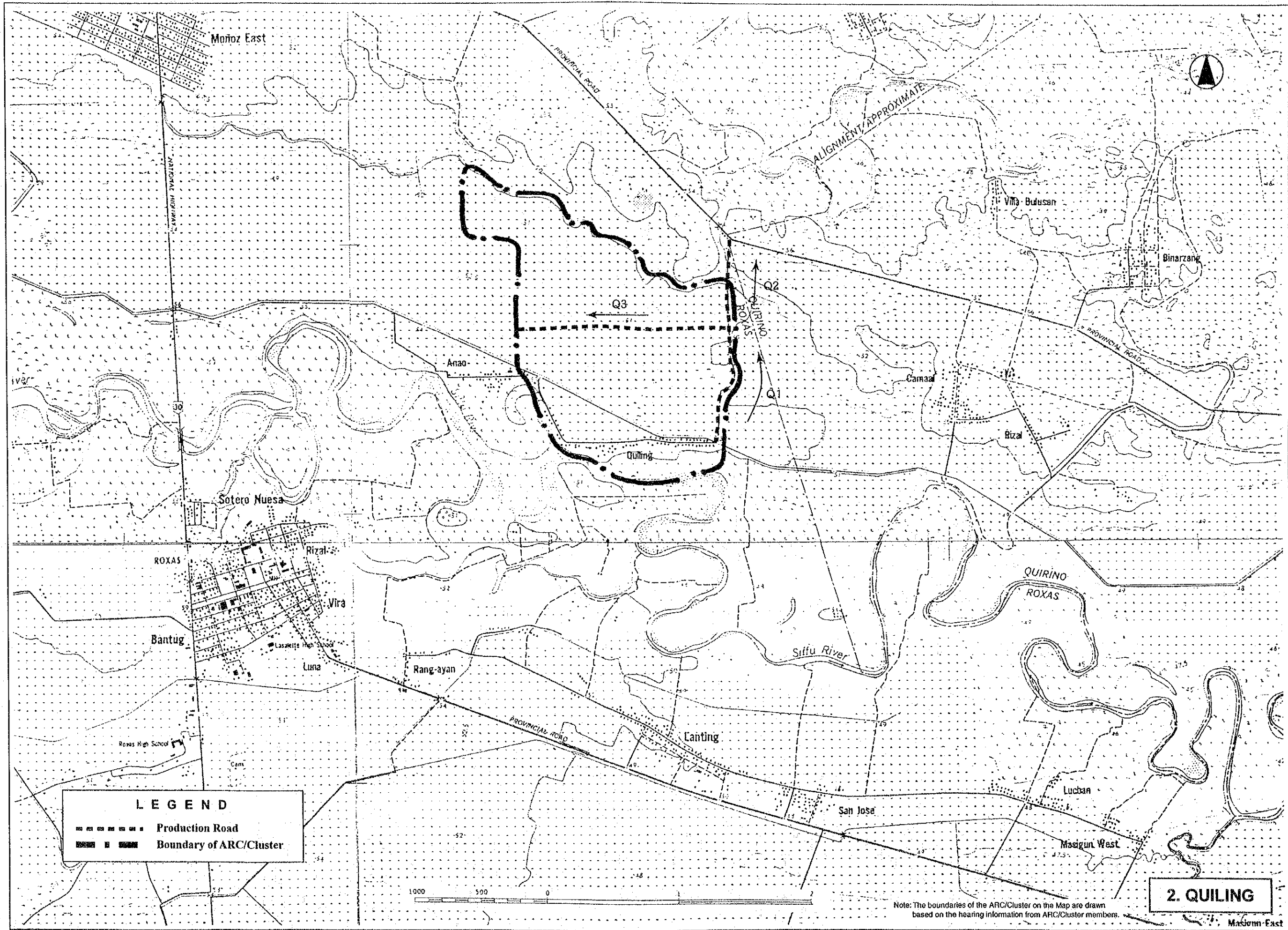
LEGEND

- Production Road
- Ⓟ Proposed Pump Site
- ▨ Irrigable Area
- Boundary of ARC/Cluster



Note: The boundaries of the ARC/Cluster on the Map are drawn based on the hearing information from ARC/Cluster members.

1. LAOAGAN



Moñoz East



ALIGNMENT APPROXIMATE

Villa Bulusan

Binarzang

Q3

Q2

Q1

Anao

Camaal

Bitzal

Sotero Nueva

ROXAS

Rizal

Vira

Bantug

Luna

Rang-ayan

Sifu River

QUIRINO

ROXAS

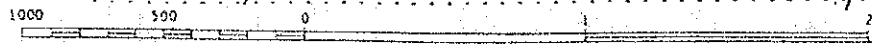
PROVINCIAL ROAD

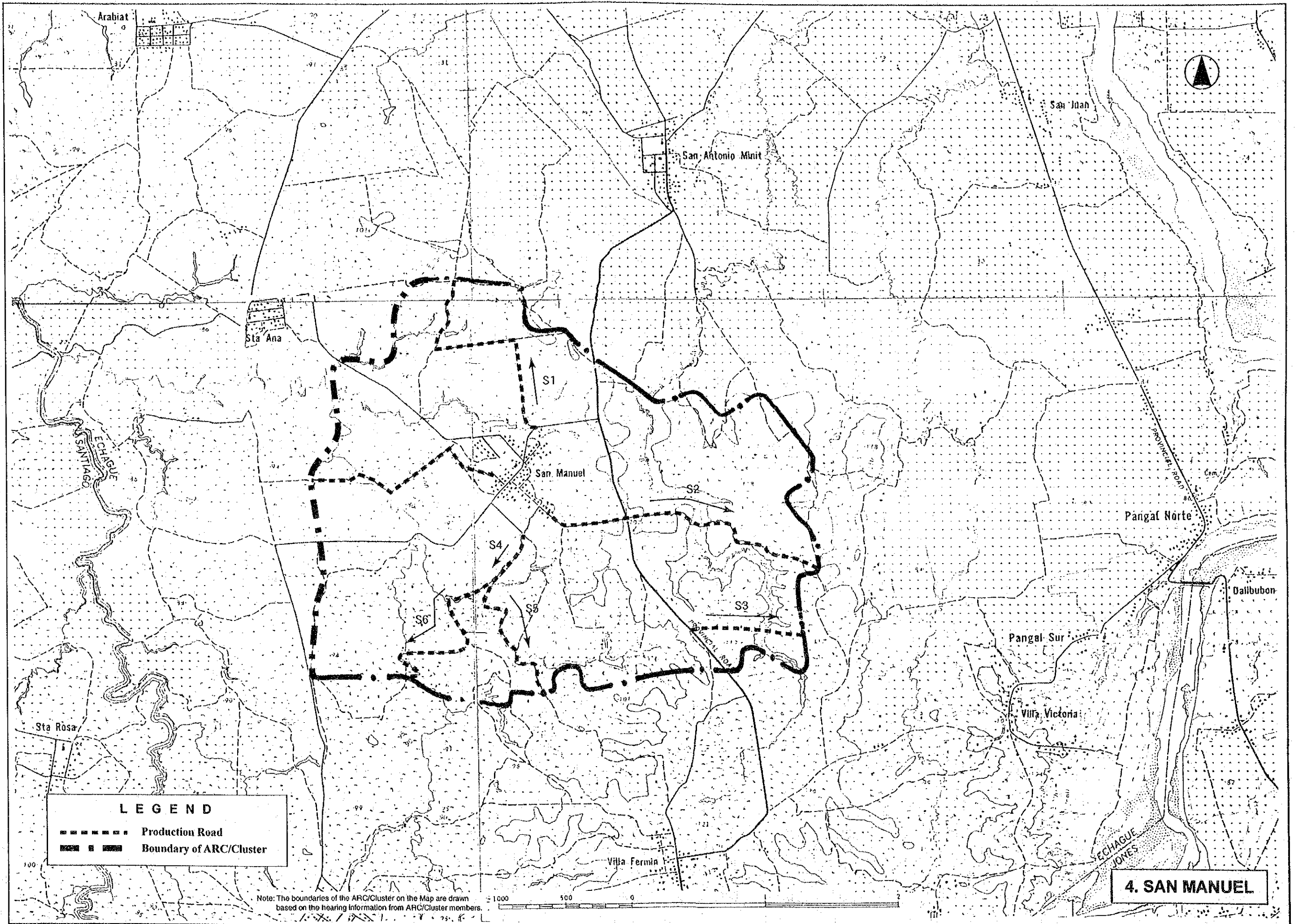
Canting

San Jose

Lucban

Masigun West





LEGEND

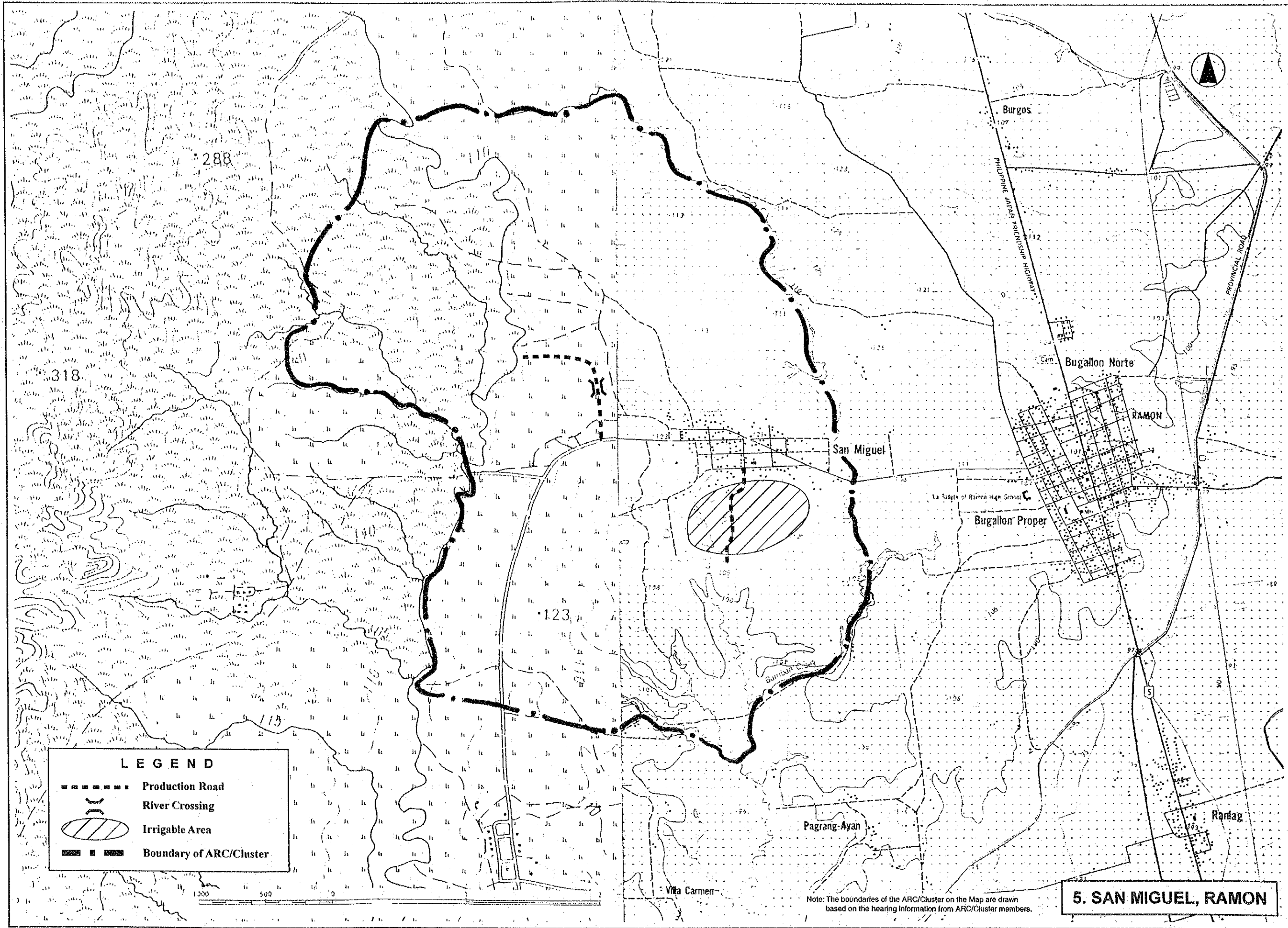
----- Production Road

———— Boundary of ARC/Cluster

Note: The boundaries of the ARC/Cluster on the Map are drawn based on the hearing information from ARC/Cluster members.

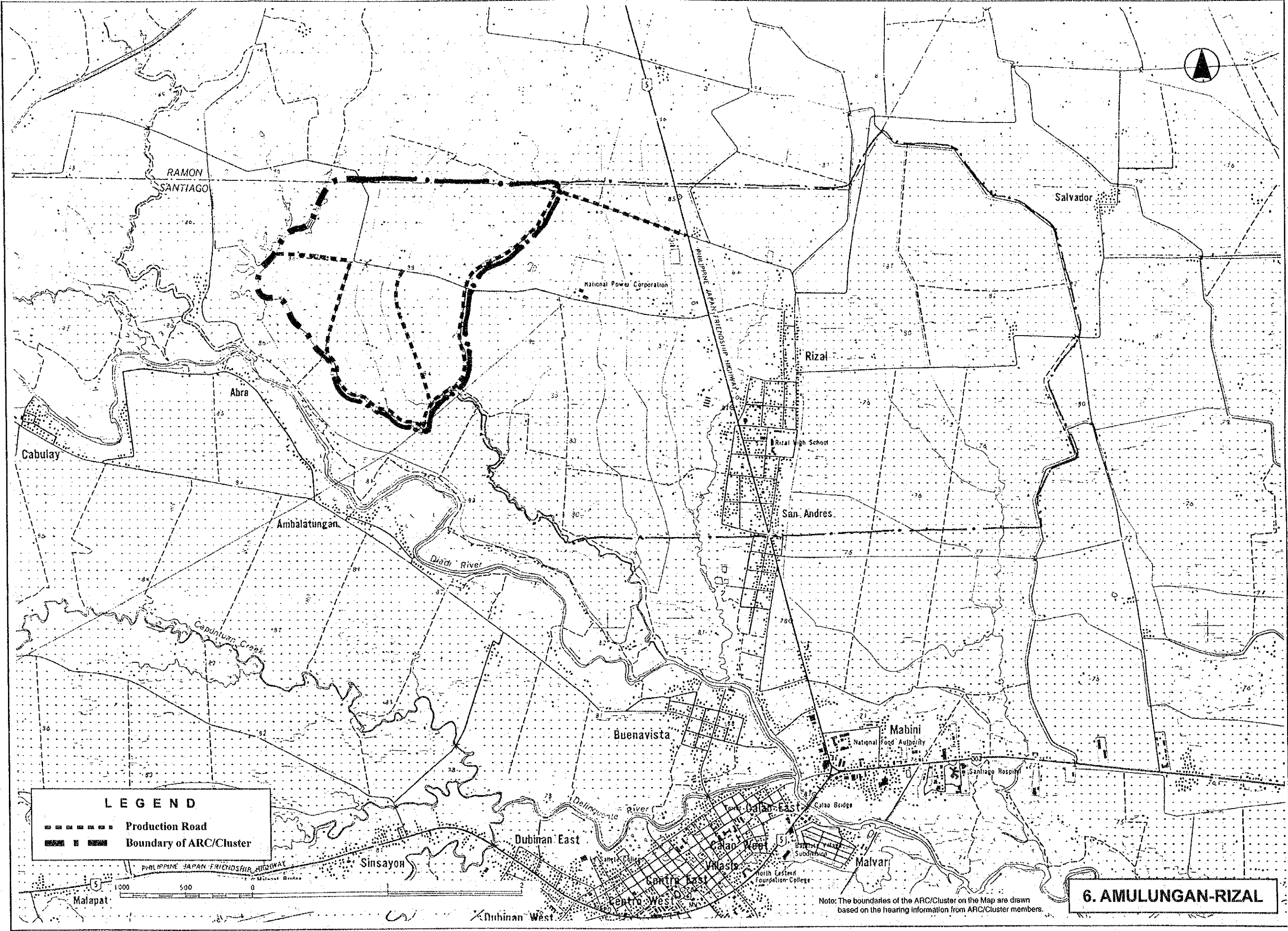
1000 500 0

4. SAN MANUEL



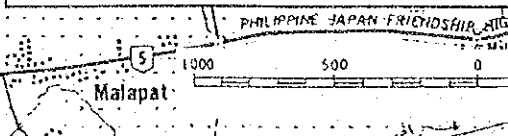
Note: The boundaries of the ARC/Cluster on the Map are drawn based on the hearing information from ARC/Cluster members.

5. SAN MIGUEL, RAMON



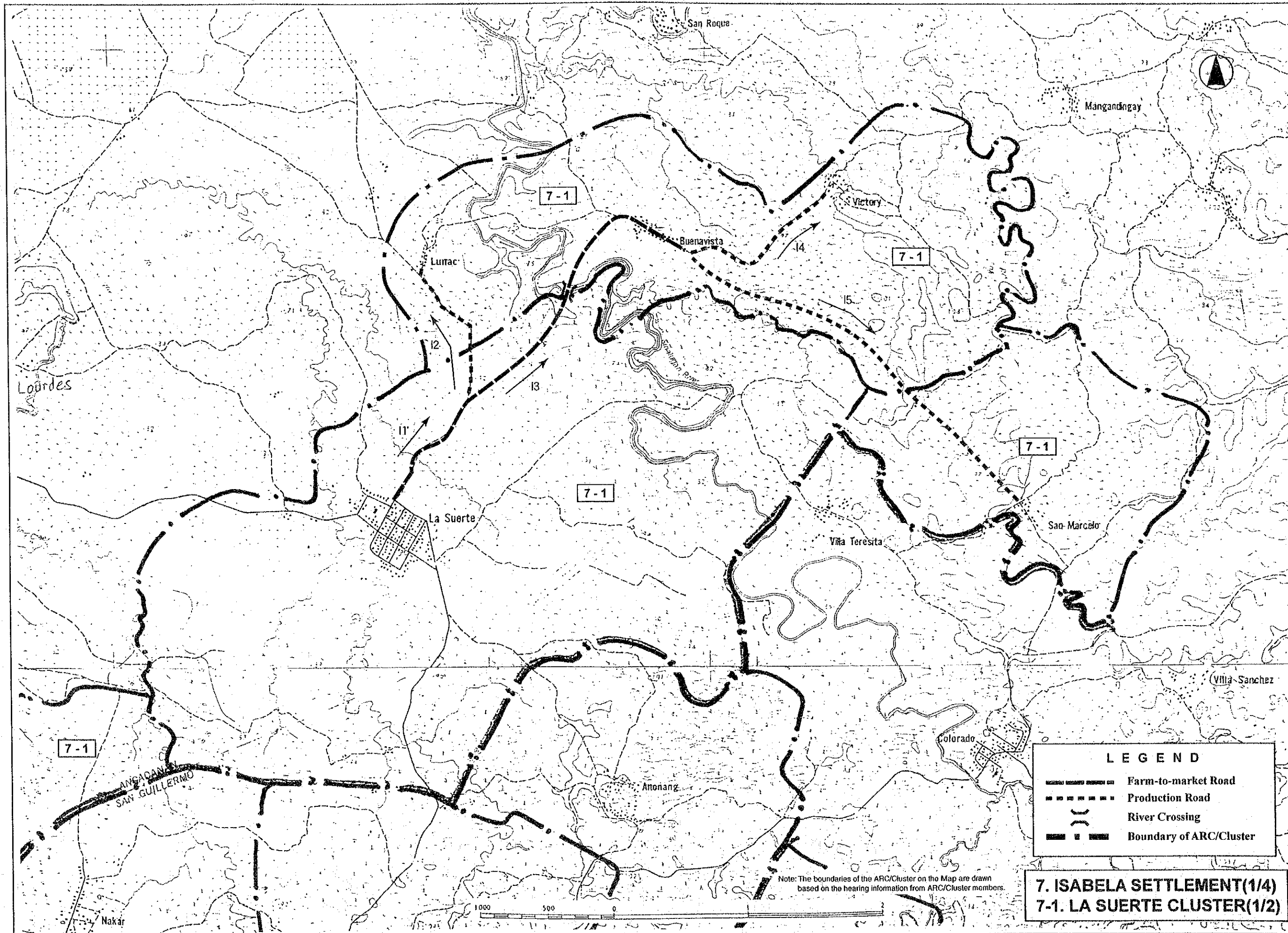
LEGEND

- Production Road
- Boundary of ARC/Cluster



6. AMULUNGAN-RIZAL

Note: The boundaries of the ARC/Cluster on the Map are drawn based on the hearing information from ARC/Cluster members.

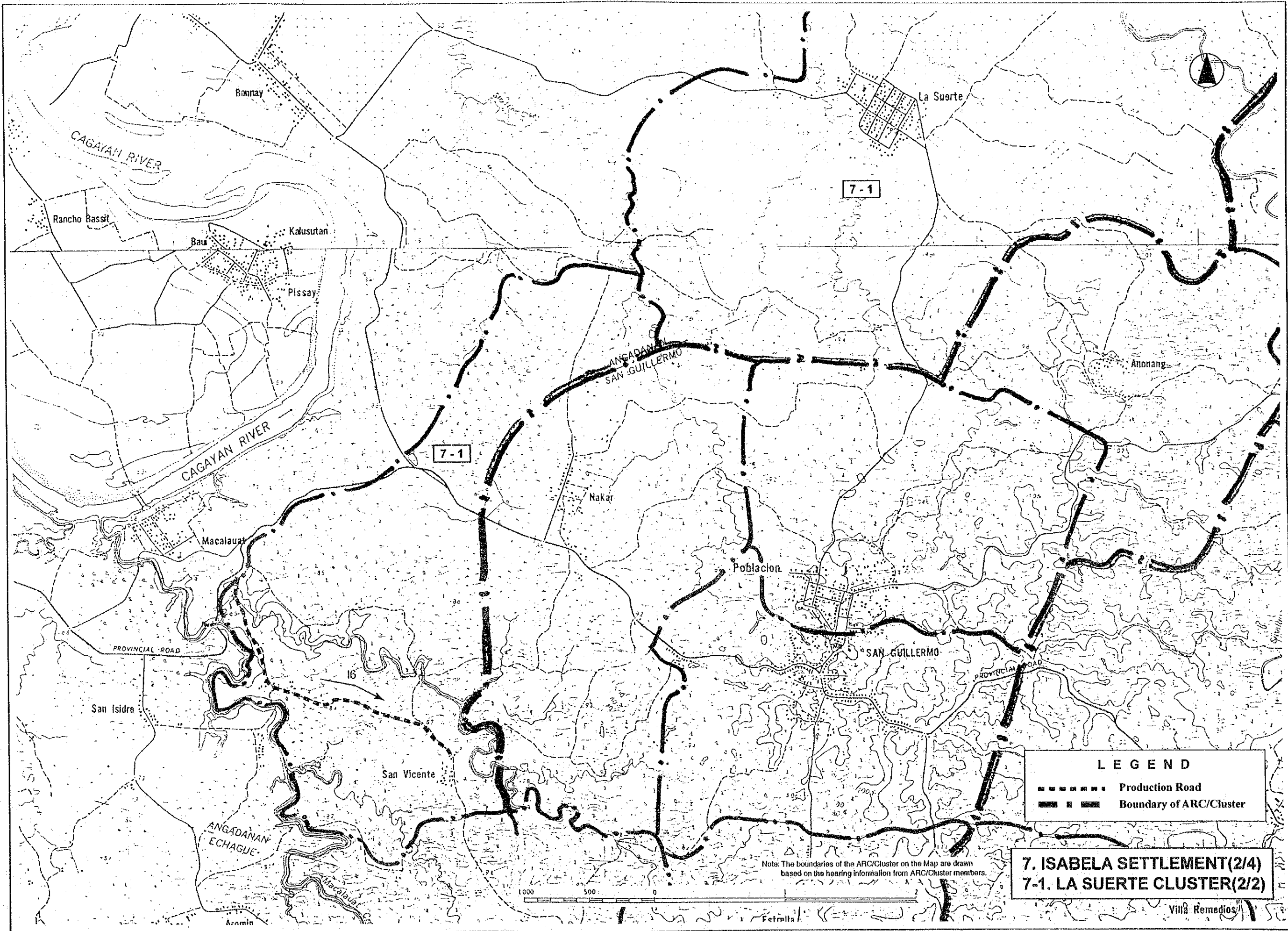


LEGEND

- Farm-to-market Road
- Production Road
- River Crossing
- Boundary of ARC/Cluster

7. ISABELA SETTLEMENT (1/4)
7-1. LA SUERTE CLUSTER (1/2)

Note: The boundaries of the ARC/Cluster on the Map are drawn based on the hearing information from ARC/Cluster members.

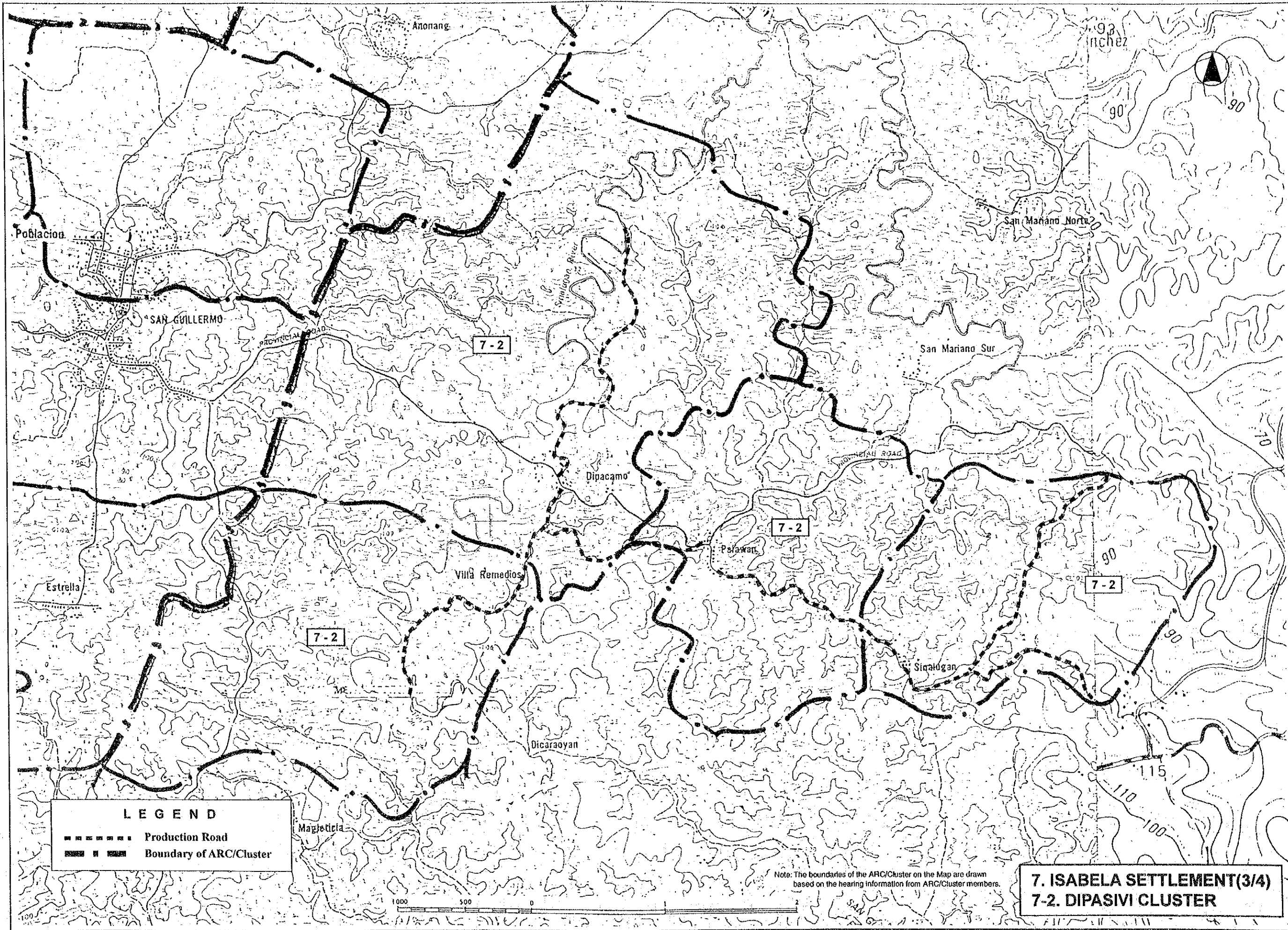


LEGEND

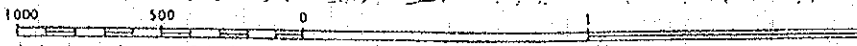
- Production Road
- Boundary of ARC/Cluster

7. ISABELA SETTLEMENT(2/4)
7-1. LA SUERTE CLUSTER(2/2)

Note: The boundaries of the ARC/Cluster on the Map are drawn based on the hearing information from ARC/Cluster members.

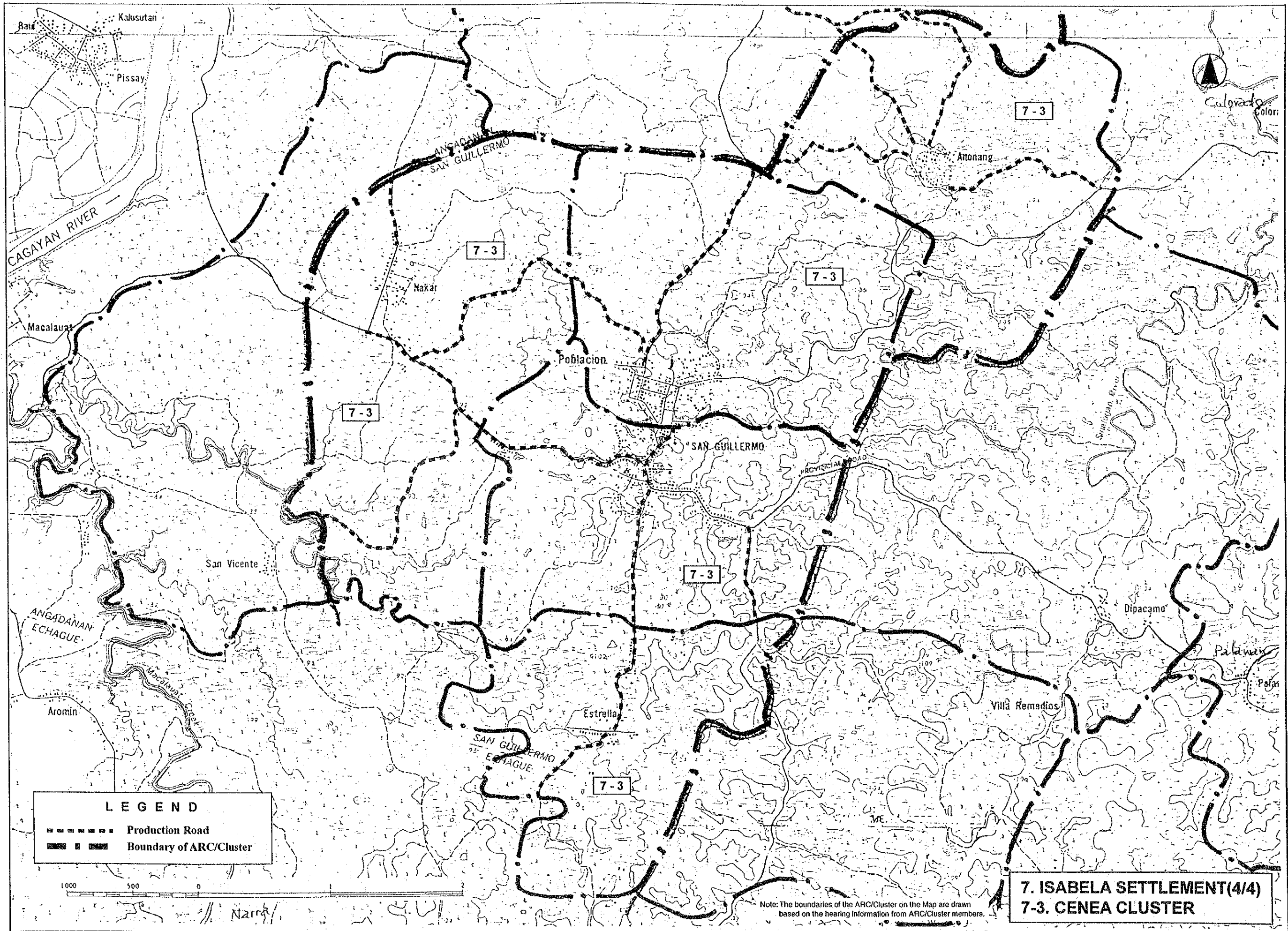


LEGEND
----- Production Road
- - - - - Boundary of ARC/Cluster



Note: The boundaries of the ARC/Cluster on the Map are drawn based on the hearing information from ARC/Cluster members.

**7. ISABELA SETTLEMENT(3/4)
7-2. DIPASIVI CLUSTER**



LEGEND

----- Production Road

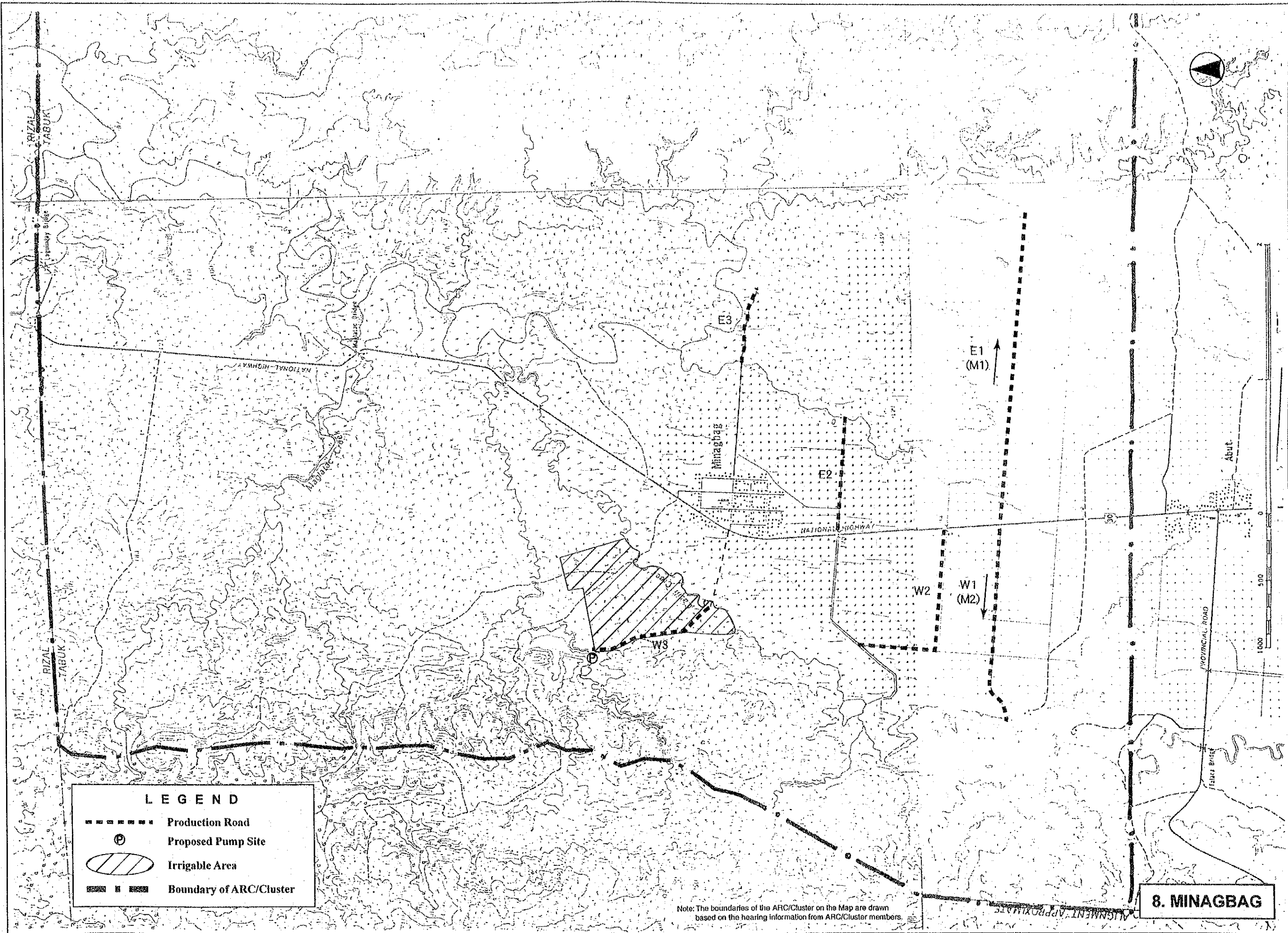
■ ■ ■ ■ ■ Boundary of ARC/Cluster



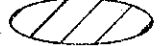



7. ISABELA SETTLEMENT(4/4)

7-3. CENEA CLUSTER

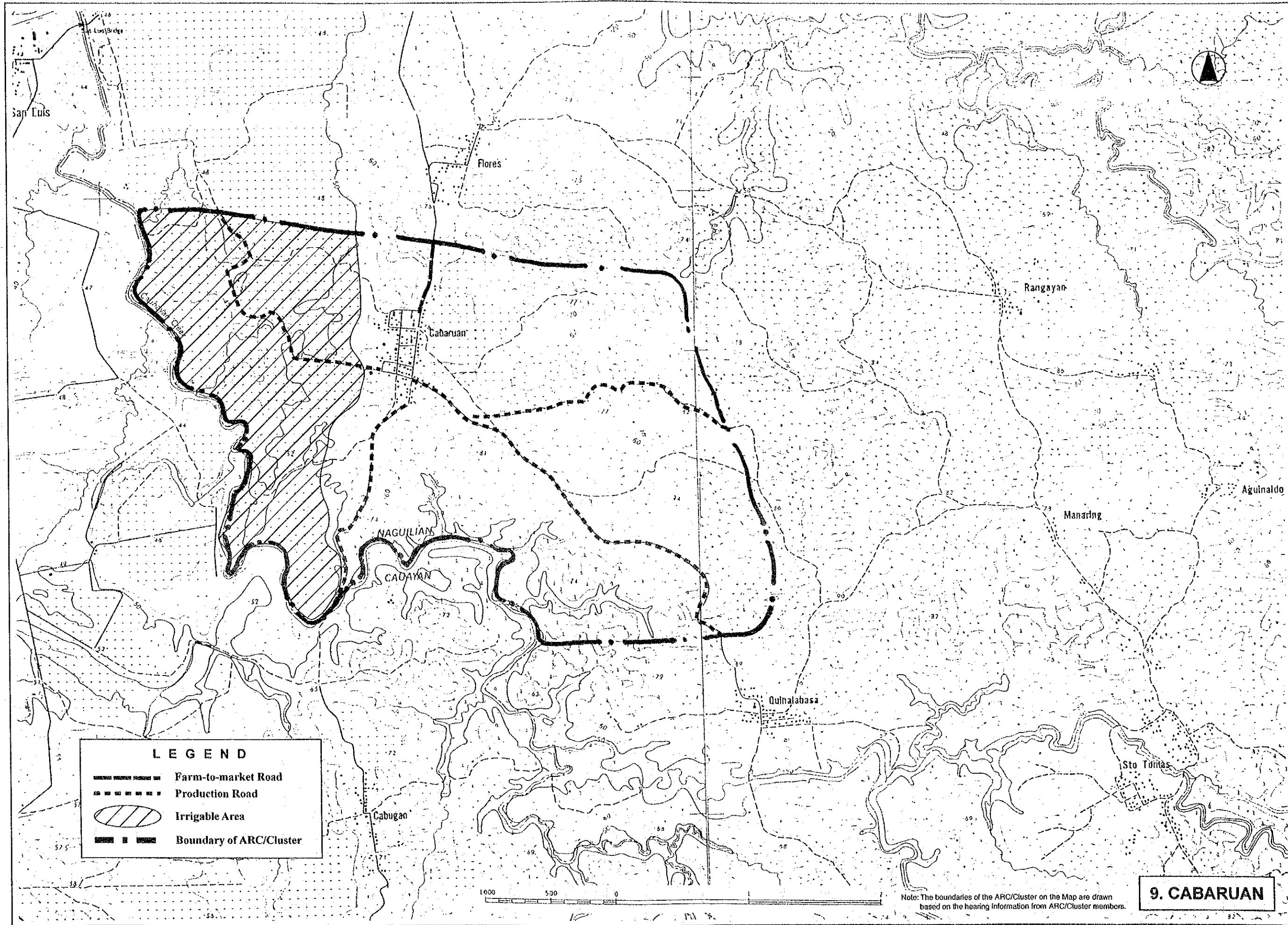
Note: The boundaries of the ARC/Cluster on the Map are drawn based on the hearing information from ARC/Cluster members.







LEGEND	
	Production Road
	Proposed Pump Site
	Irrigable Area
	Boundary of ARC/Cluster

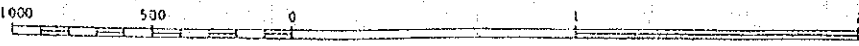
Note: The boundaries of the ARC/Cluster on the Map are drawn based on the hearing information from ARC/Cluster members.

8. MINAGBAG



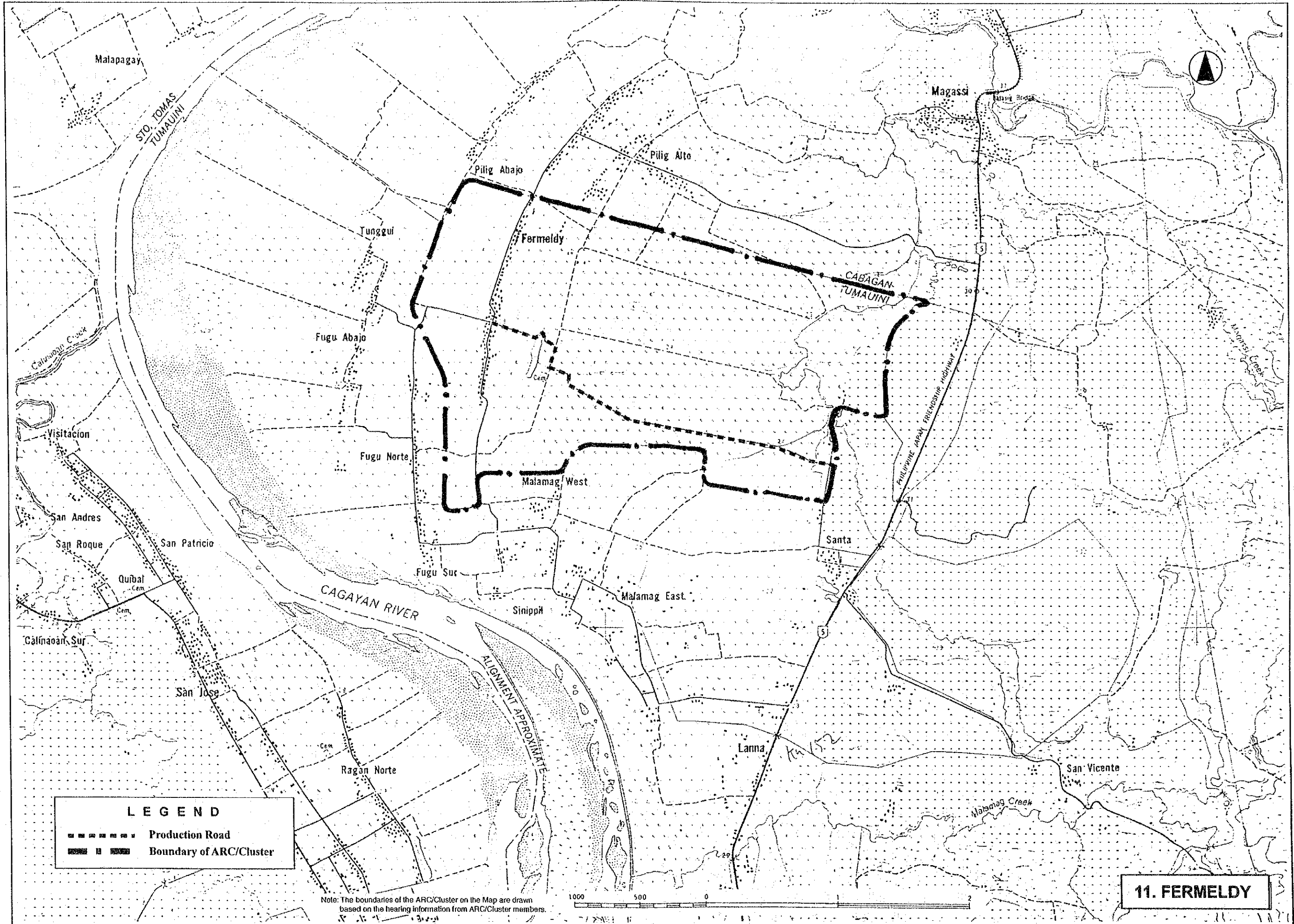
LEGEND

-  Farm-to-market Road
-  Production Road
-  Irrigable Area
-  Boundary of ARC/Cluster





Note: The boundaries of the ARC/Cluster on the Map are drawn based on the hearing information from ARC/Cluster members.

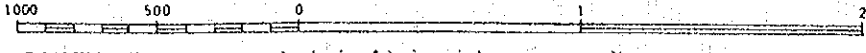
9. CABARUAN



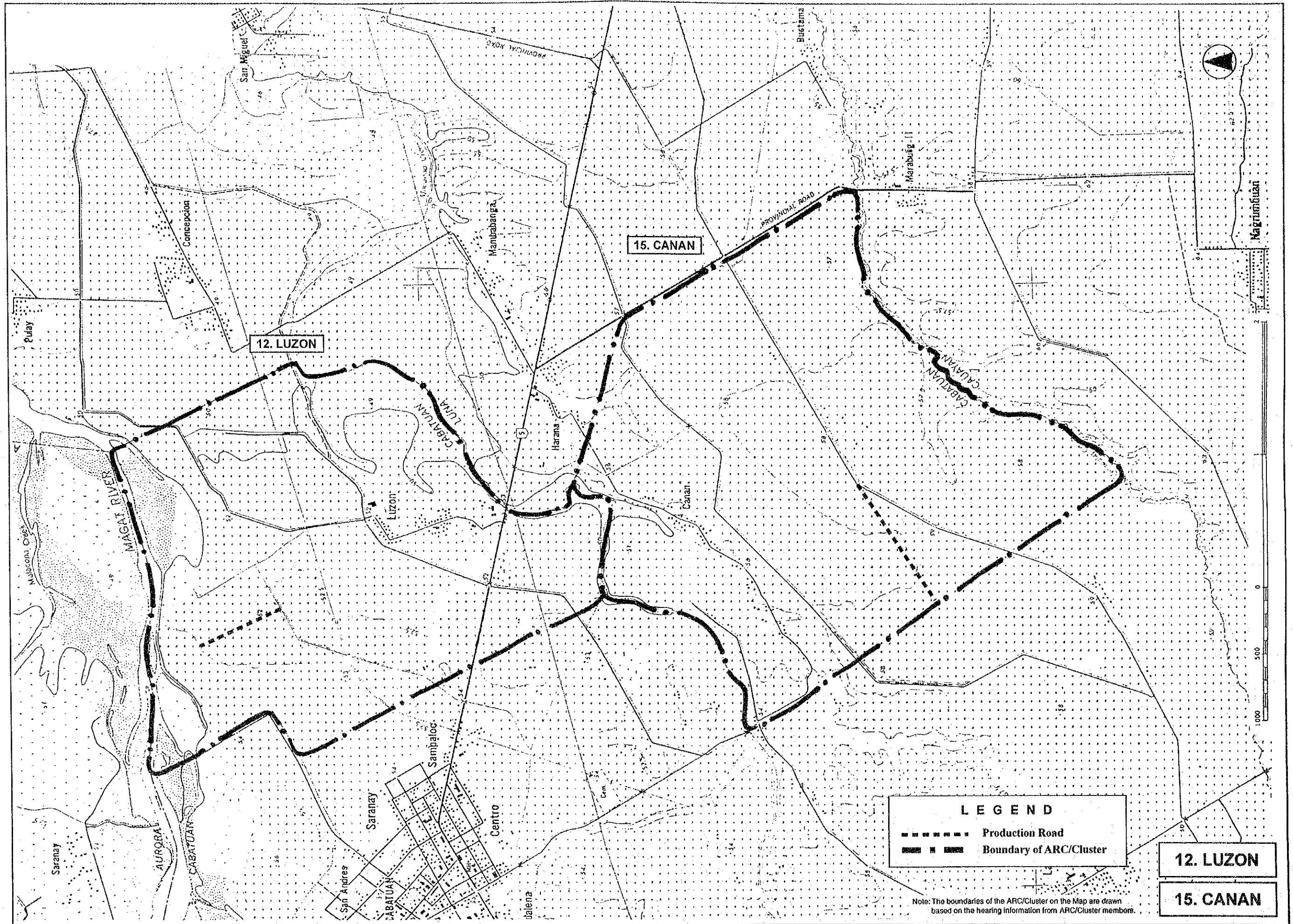
LEGEND

-  Production Road
-  Boundary of ARC/Cluster

Note: The boundaries of the ARC/Cluster on the Map are drawn based on the hearing information from ARC/Cluster members.



11. FERMELDY



12. LUZON

15. CANAN

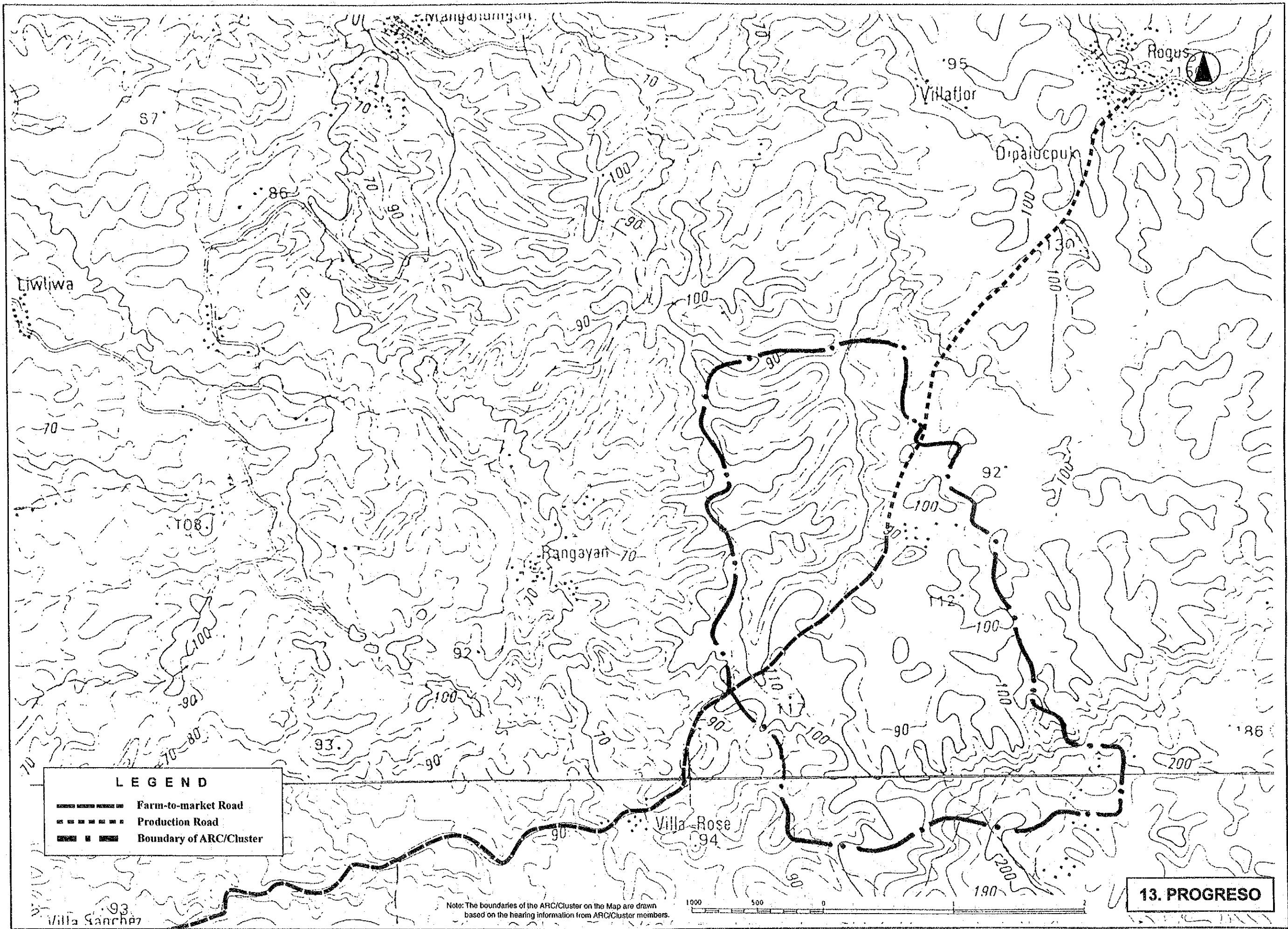
LEGEND

- Production Road
- Boundary of ARC/Cluster

12. LUZON

15. CANAN

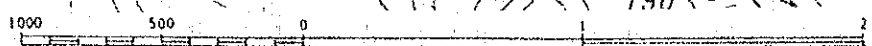
Note: The boundaries of the ARC/Cluster on the Map are drawn based on the hearing information from ARC/Cluster members.



LEGEND

- Farm-to-market Road
- Production Road
- Boundary of ARC/Cluster

Note: The boundaries of the ARC/Cluster on the Map are drawn based on the hearing information from ARC/Cluster members.



13. PROGRESO