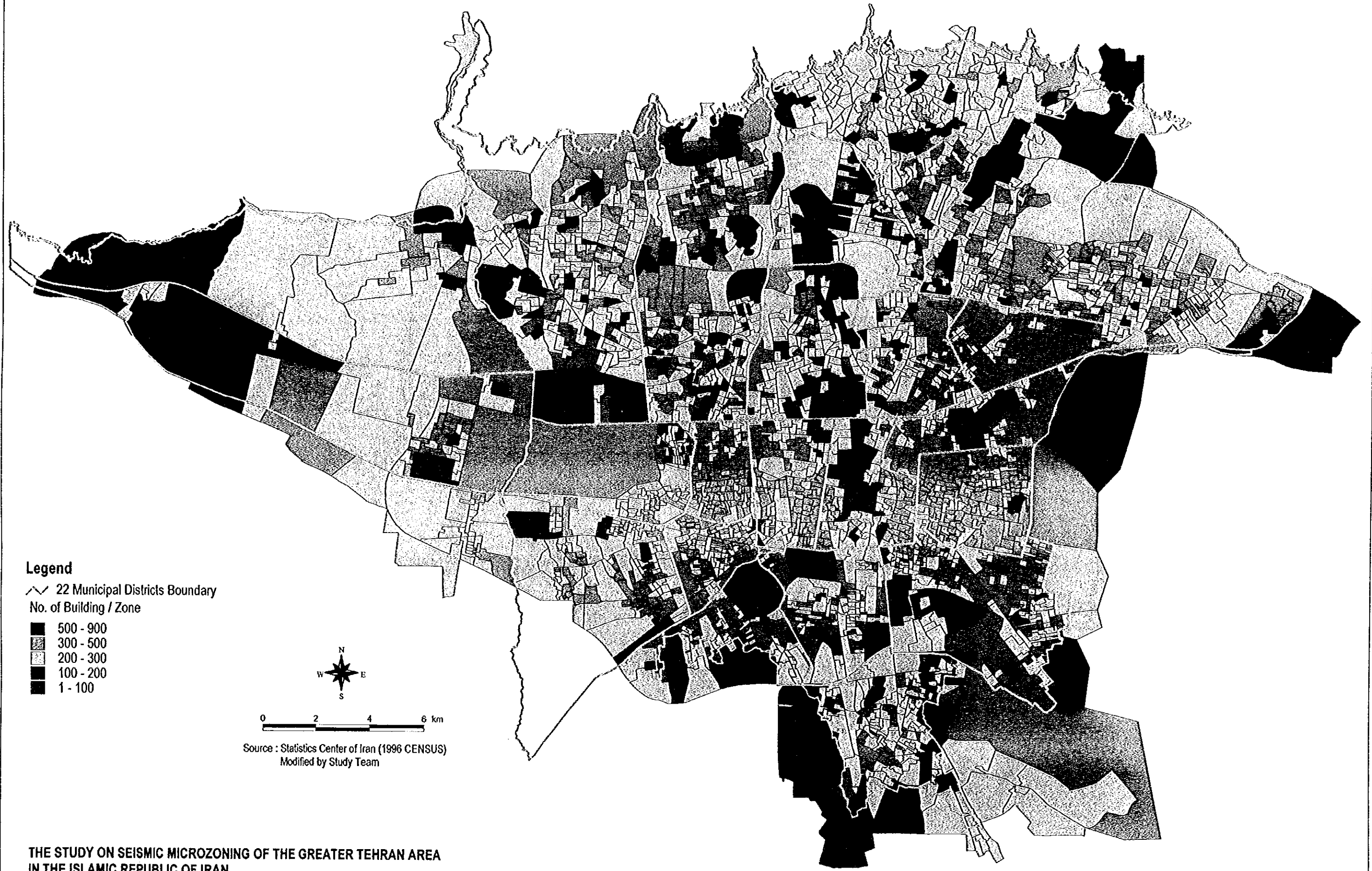


C. Seismic Damage Analysis

Building Distribution by Structure (Total)



Legend

∩ 22 Municipal Districts Boundary

No. of Building / Zone

- 500 - 900
- ▨ 300 - 500
- ░ 200 - 300
- 100 - 200
- 1 - 100

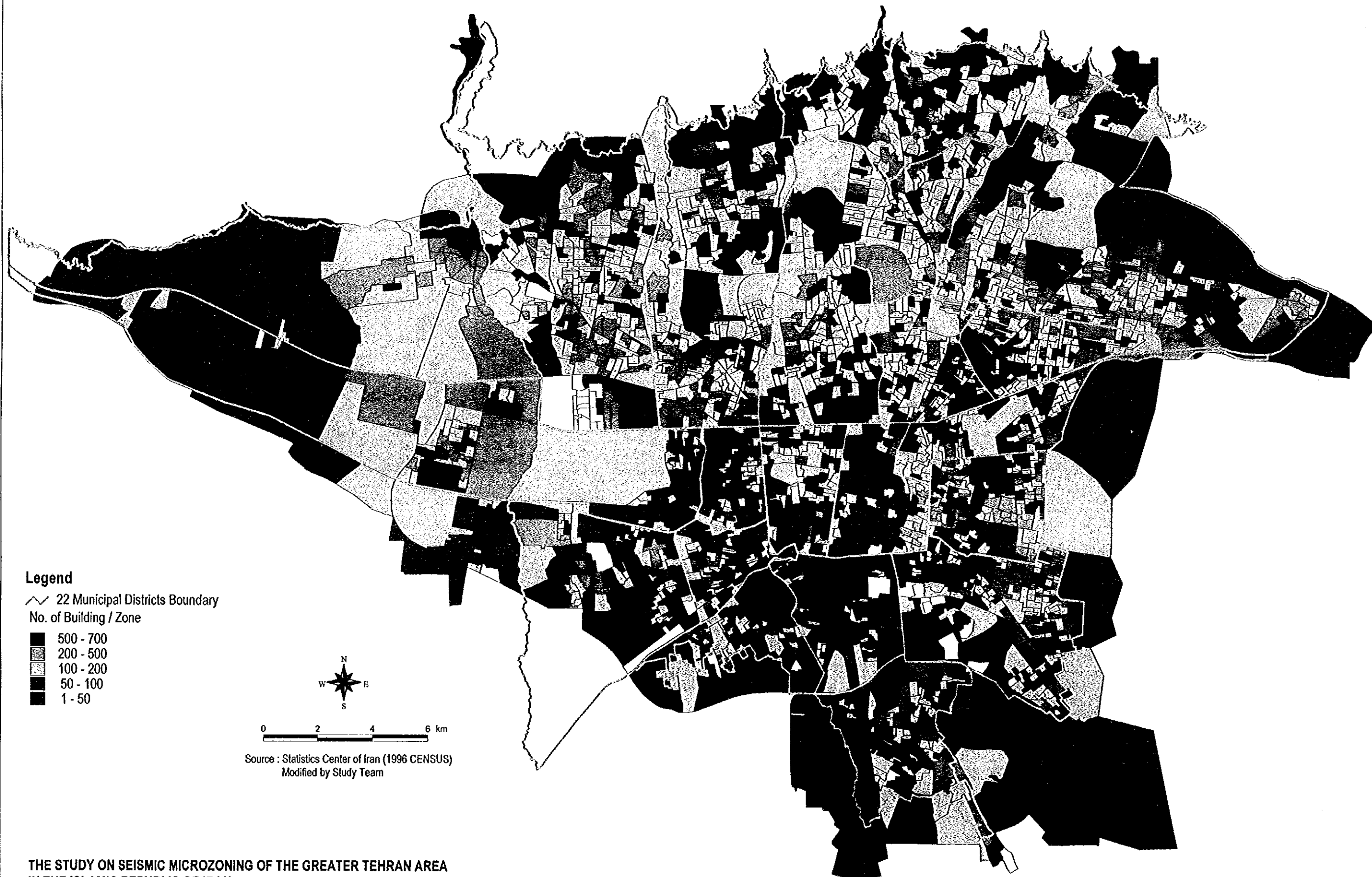


Source : Statistics Center of Iran (1996 CENSUS)
Modified by Study Team

**THE STUDY ON SEISMIC MICROZONING OF THE GREATER TEHRAN AREA
IN THE ISLAMIC REPUBLIC OF IRAN**

Centre for Earthquake and Environmental Studies of Tehran (CEST)
Japan International Cooperation Agency (JICA)

Building Distribution by Structure (Steel Frame)



Legend
∩ 22 Municipal Districts Boundary
No. of Building / Zone

- 500 - 700
- ▨ 200 - 500
- ▧ 100 - 200
- ▩ 50 - 100
- 1 - 50



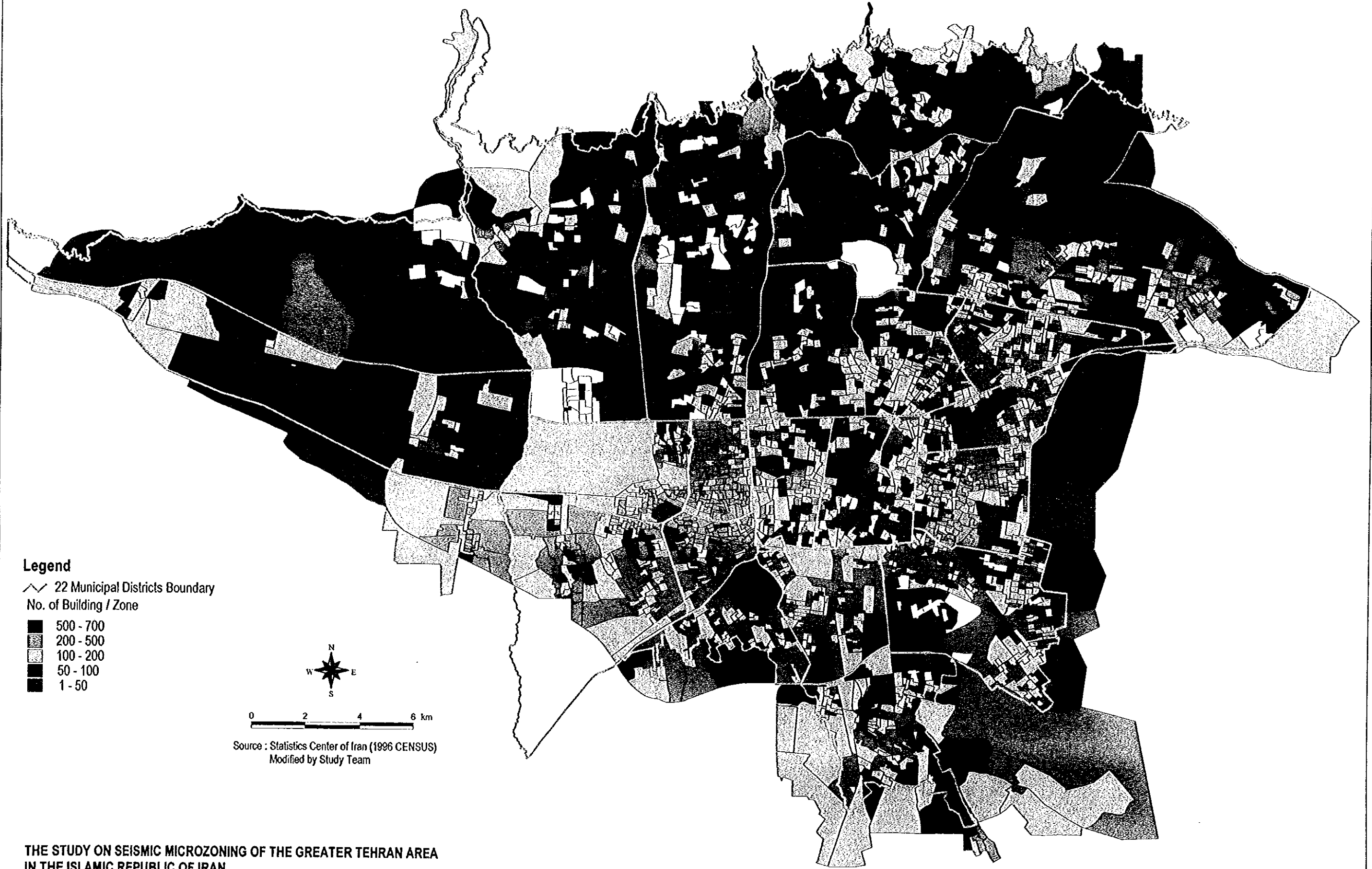
0 2 4 6 km

Source : Statistics Center of Iran (1996 CENSUS)
Modified by Study Team

**THE STUDY ON SEISMIC MICROZONING OF THE GREATER TEHRAN AREA
IN THE ISLAMIC REPUBLIC OF IRAN**

Centre for Earthquake and Environmental Studies of Tehran (CEST)
Japan International Cooperation Agency (JICA)

Building Distribution by Structure (Steel & Brick)



Legend

∩ 22 Municipal Districts Boundary

No. of Building / Zone

- 500 - 700
- 200 - 500
- 100 - 200
- 50 - 100
- 1 - 50



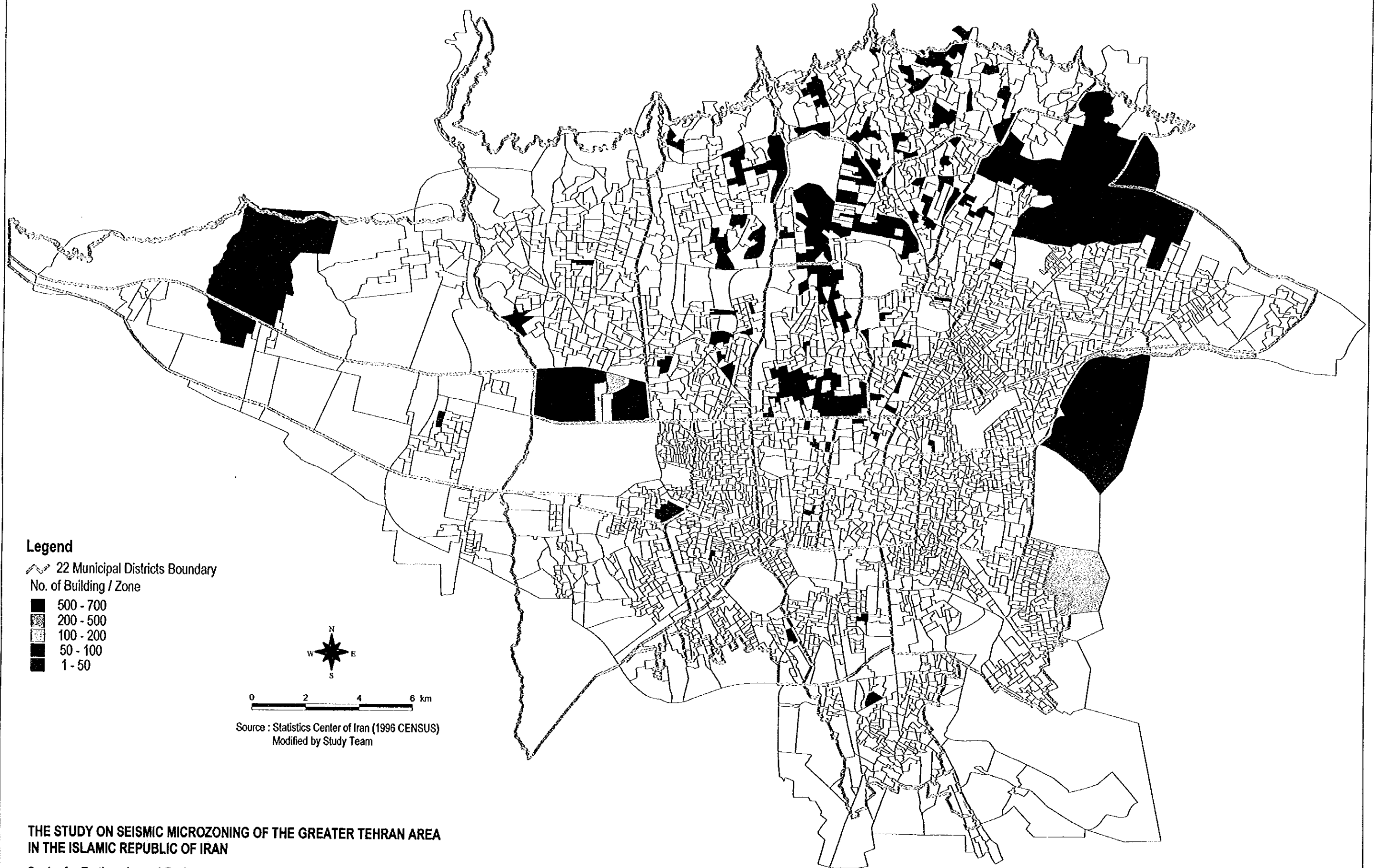
0 2 4 6 km

Source : Statistics Center of Iran (1996 CENSUS)
Modified by Study Team

**THE STUDY ON SEISMIC MICROZONING OF THE GREATER TEHRAN AREA
IN THE ISLAMIC REPUBLIC OF IRAN**

Centre for Earthquake and Environmental Studies of Tehran (CEST)
Japan International Cooperation Agency (JICA)

Building Distribution by Structure (RC-0)



Legend

--- 22 Municipal Districts Boundary

No. of Building / Zone

- 500 - 700
- ▨ 200 - 500
- ░ 100 - 200
- 50 - 100
- 1 - 50



0 2 4 6 km

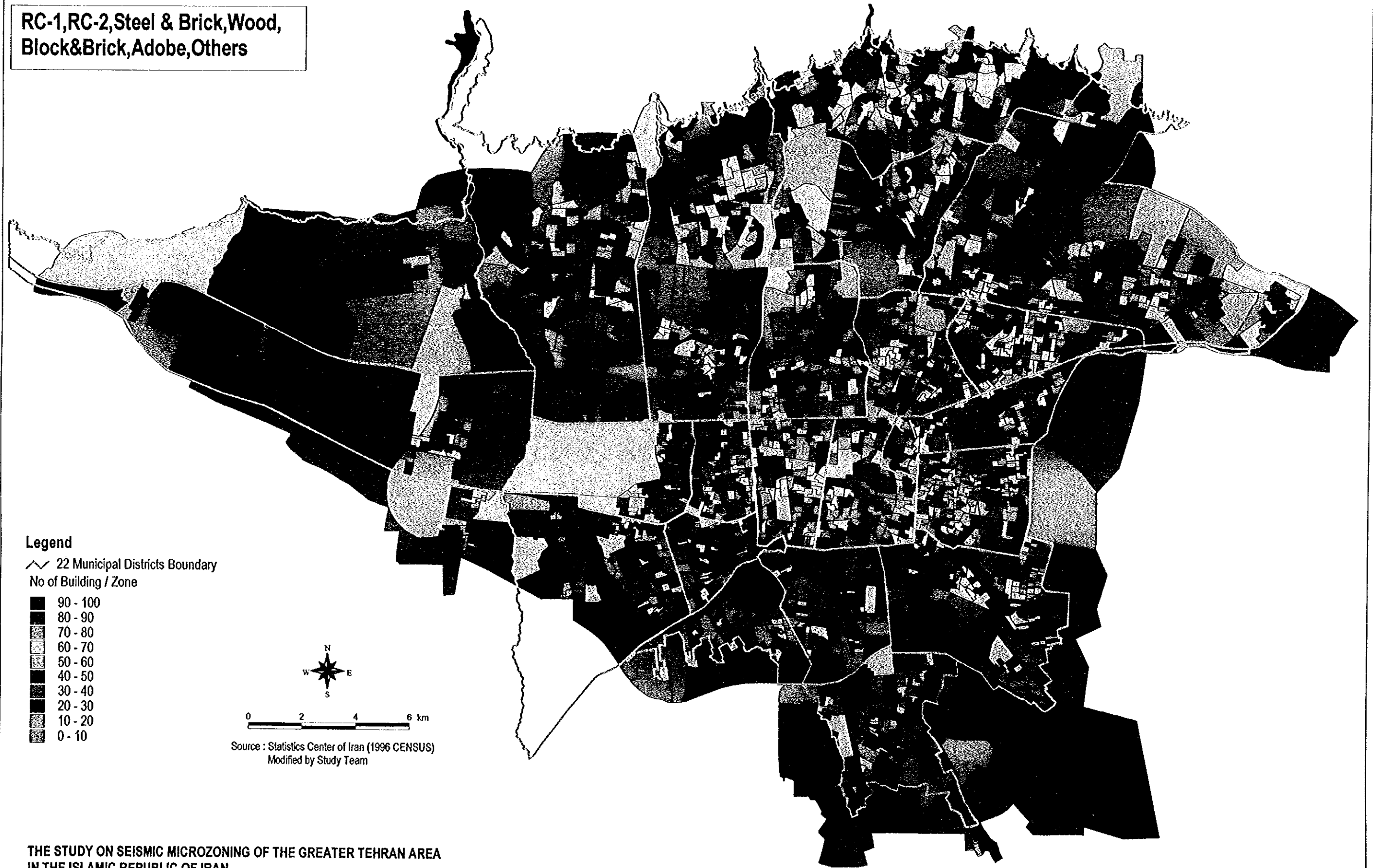
Source : Statistics Center of Iran (1996 CENSUS)
Modified by Study Team

**THE STUDY ON SEISMIC MICROZONING OF THE GREATER TEHRAN AREA
IN THE ISLAMIC REPUBLIC OF IRAN**

Centre for Earthquake and Environmental Studies of Tehran (CEST)
Japan International Cooperation Agency (JICA)

"Weak" Building Distribution

RC-1,RC-2,Steel & Brick,Wood,
Block&Brick,Adobe,Others



Legend

∩ 22 Municipal Districts Boundary

No of Building / Zone

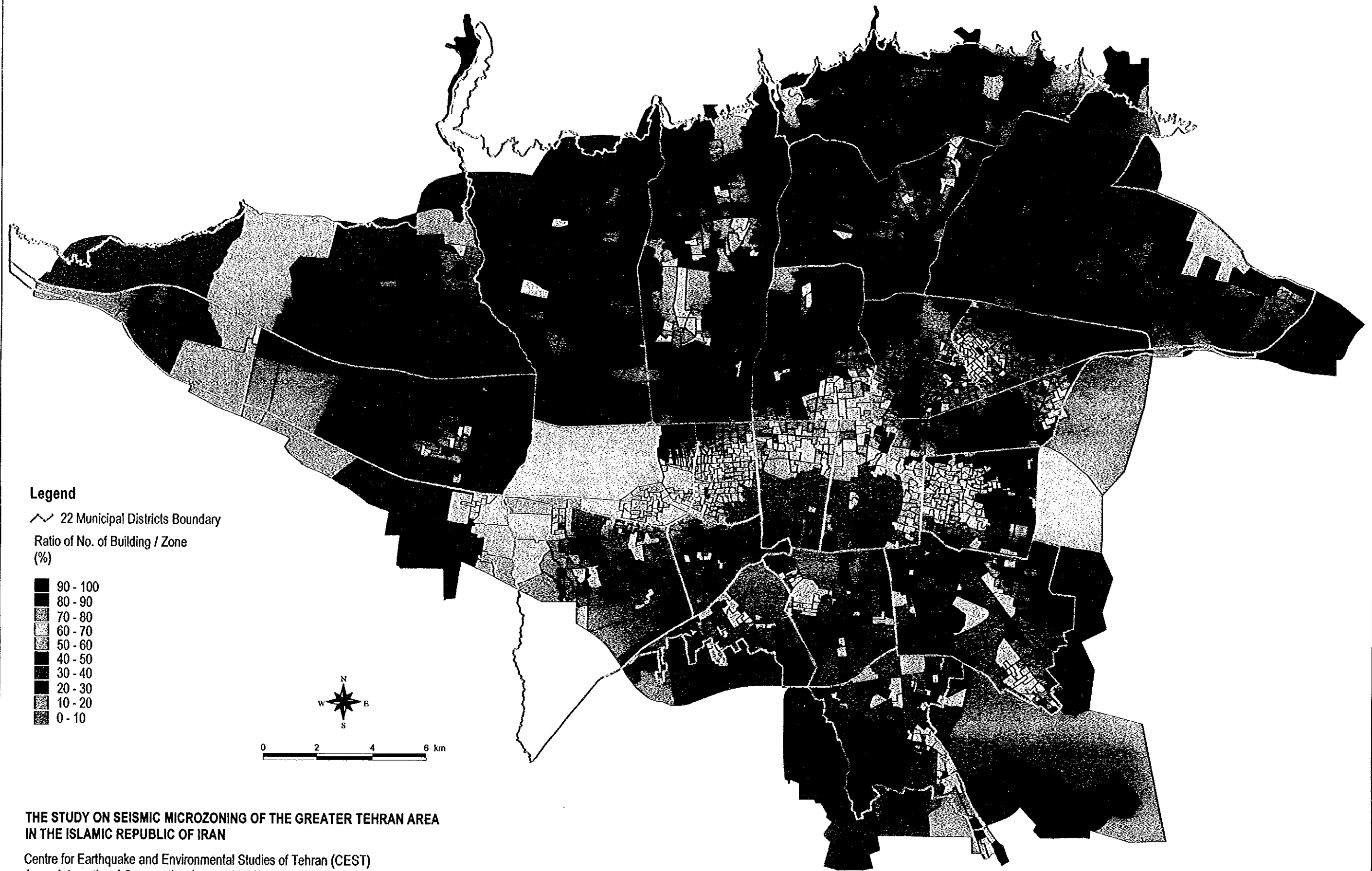
- 90 - 100
- 80 - 90
- 70 - 80
- 60 - 70
- 50 - 60
- 40 - 50
- 30 - 40
- 20 - 30
- 10 - 20
- 0 - 10

Source : Statistics Center of Iran (1996 CENSUS)
Modified by Study Team

**THE STUDY ON SEISMIC MICROZONING OF THE GREATER TEHRAN AREA
IN THE ISLAMIC REPUBLIC OF IRAN**

Centre for Earthquake and Environmental Studies of Tehran (CEST)
Japan International Cooperation Agency (JICA)

Heavily Damaged or Collapsed Building Ratio Distribution (Ray Fault model)



Legend

~ 22 Municipal Districts Boundary

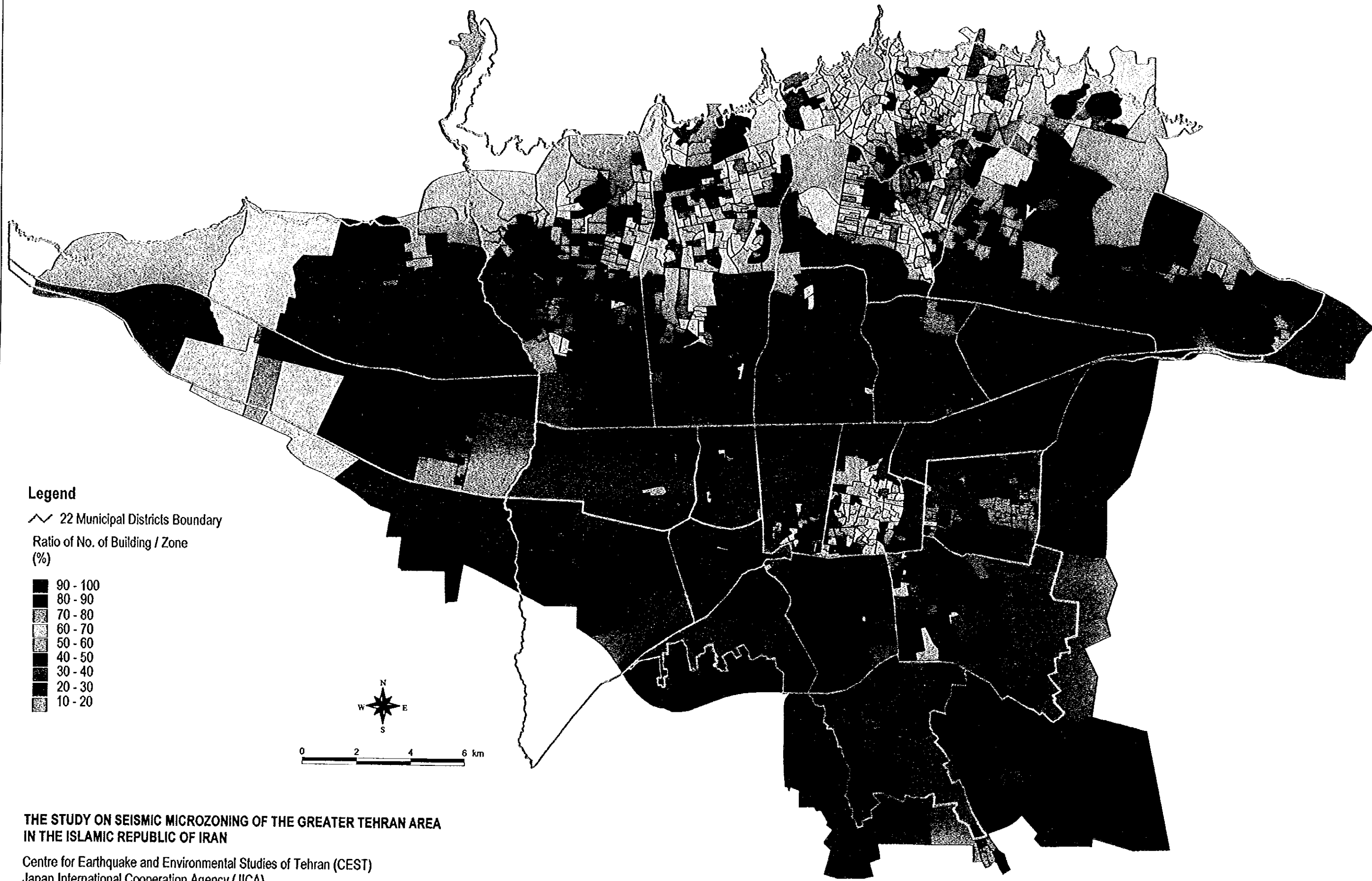
Ratio of No. of Building / Zone (%)

- 90 - 100
- 80 - 90
- 70 - 80
- 60 - 70
- 50 - 60
- 40 - 50
- 30 - 40
- 20 - 30
- 10 - 20
- 0 - 10

THE STUDY ON SEISMIC MICROZONING OF THE GREATER TEHRAN AREA
IN THE ISLAMIC REPUBLIC OF IRAN

Centre for Earthquake and Environmental Studies of Tehran (CEST)
Japan International Cooperation Agency (JICA)

Heavily Damaged or Collapsed Building Ratio Distribution (NTF model)

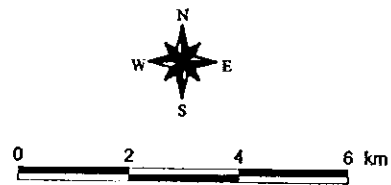


Legend

~ 22 Municipal Districts Boundary

Ratio of No. of Building / Zone (%)

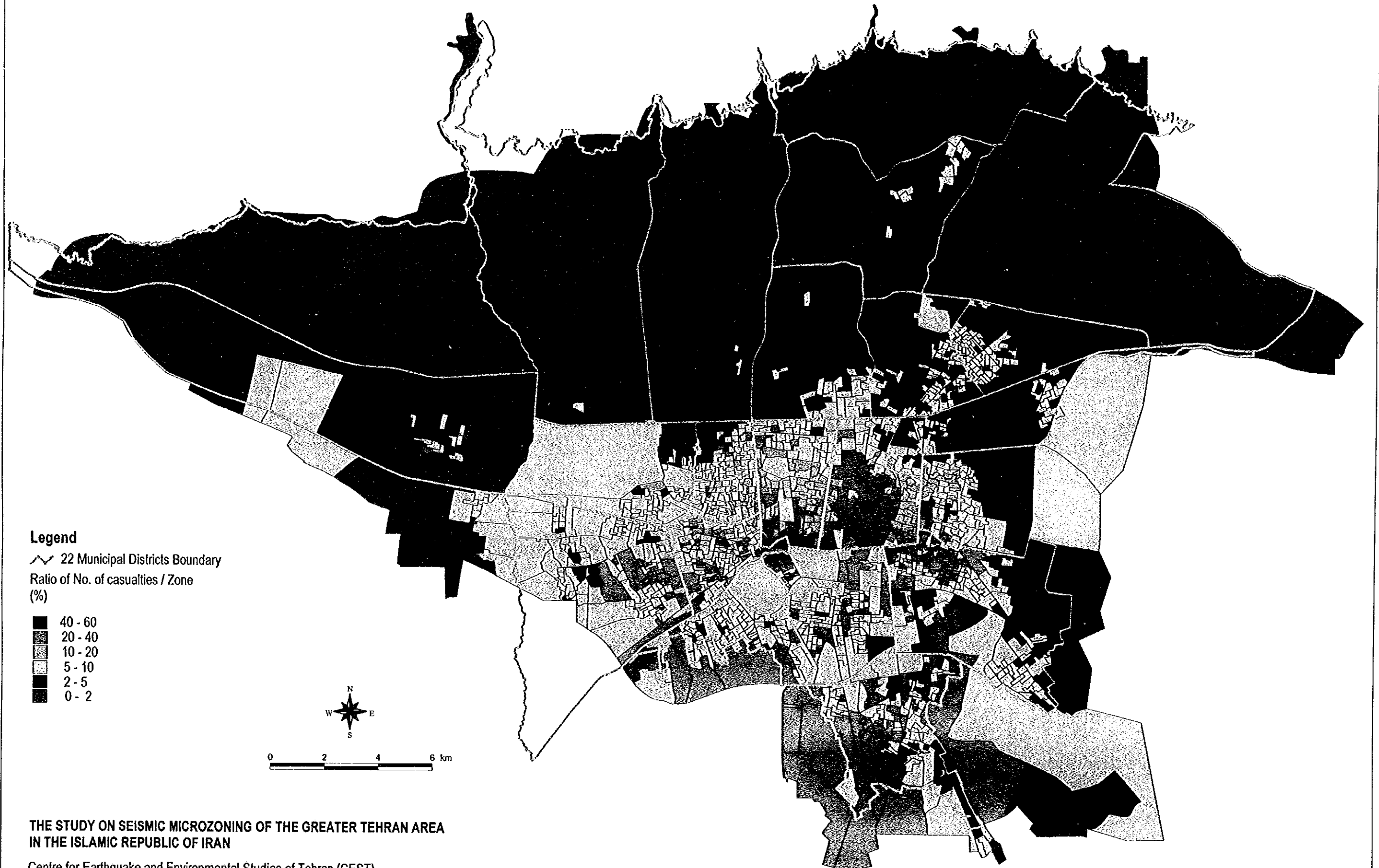
- 90 - 100
- 80 - 90
- 70 - 80
- 60 - 70
- 50 - 60
- 40 - 50
- 30 - 40
- 20 - 30
- 10 - 20



**THE STUDY ON SEISMIC MICROZONING OF THE GREATER TEHRAN AREA
IN THE ISLAMIC REPUBLIC OF IRAN**

Centre for Earthquake and Environmental Studies of Tehran (CEST)
Japan International Cooperation Agency (JICA)

Casualty Ratio Distribution - Night No Rescue Work (Ray Fault model)



Legend

~ 22 Municipal Districts Boundary

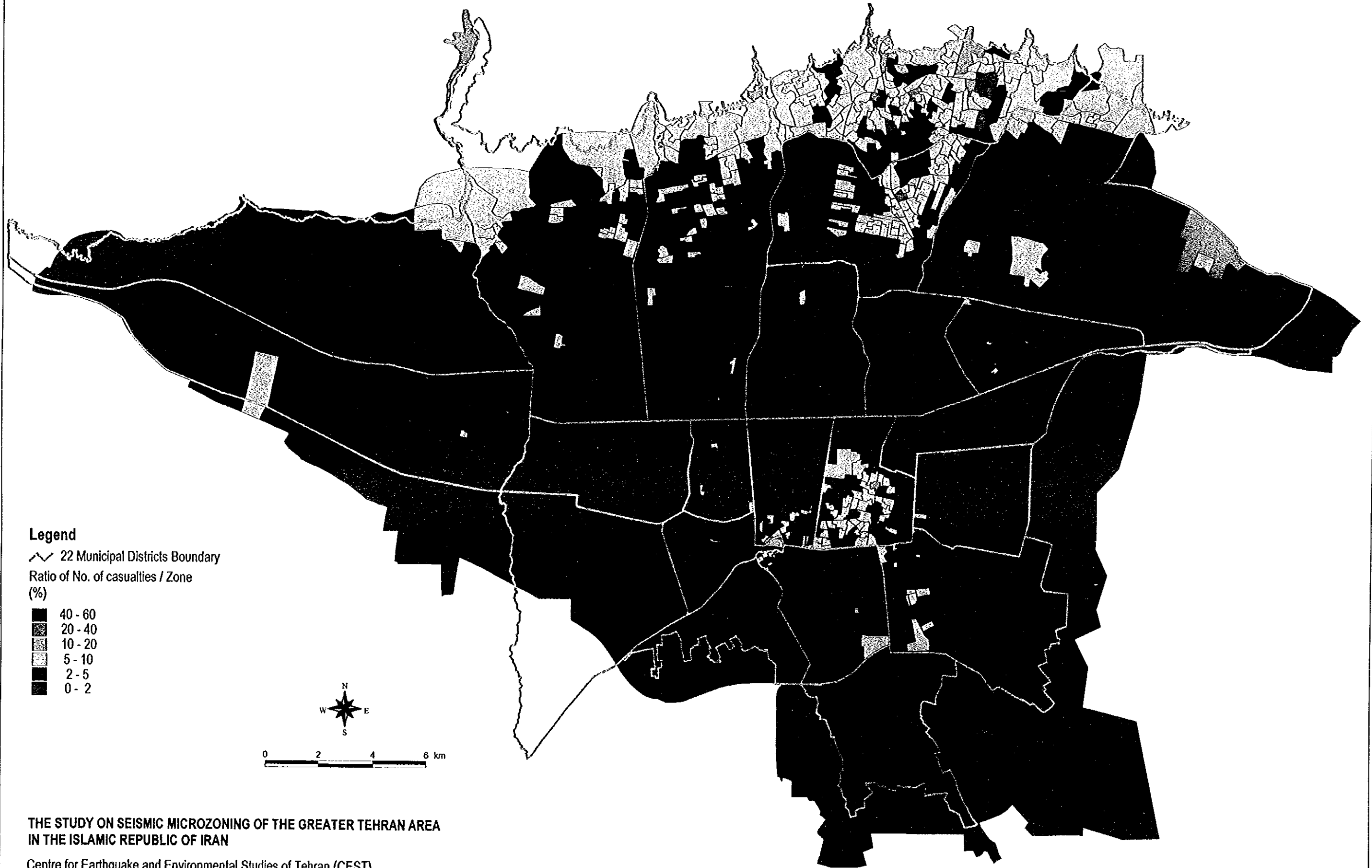
Ratio of No. of casualties / Zone (%)

- 40 - 60
- 20 - 40
- 10 - 20
- 5 - 10
- 2 - 5
- 0 - 2

THE STUDY ON SEISMIC MICROZONING OF THE GREATER TEHRAN AREA
IN THE ISLAMIC REPUBLIC OF IRAN

Centre for Earthquake and Environmental Studies of Tehran (CEST)
Japan International Cooperation Agency (JICA)

Casualty Ratio Distribution - Night No Rescue Work (NTF model)



Legend

~ 22 Municipal Districts Boundary

Ratio of No. of casualties / Zone (%)

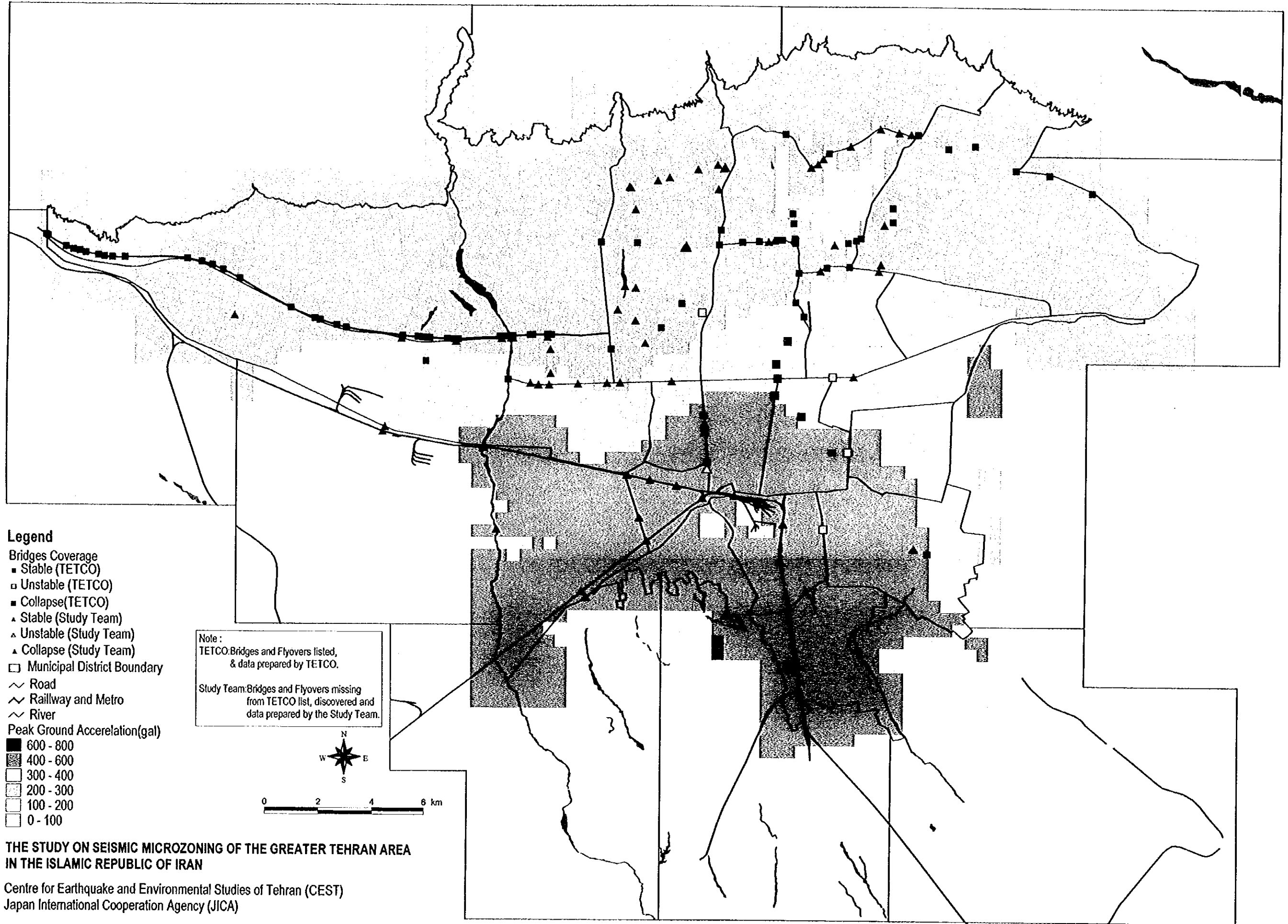
- 40 - 60
- 20 - 40
- 10 - 20
- 5 - 10
- 2 - 5
- 0 - 2



THE STUDY ON SEISMIC MICROZONING OF THE GREATER TEHRAN AREA
IN THE ISLAMIC REPUBLIC OF IRAN

Centre for Earthquake and Environmental Studies of Tehran (CEST)
Japan International Cooperation Agency (JICA)

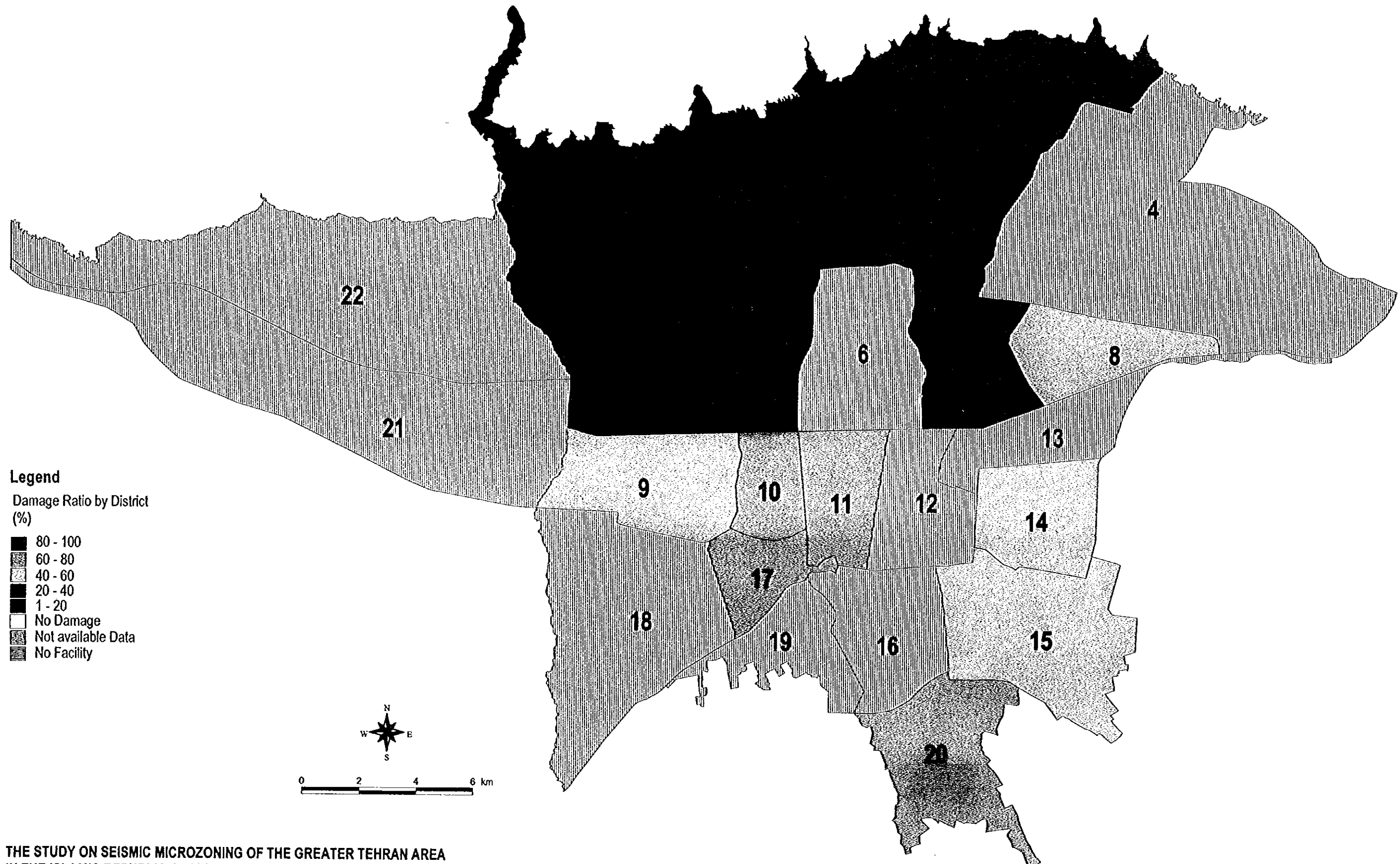
Damage of Bridges (Ray Fault Model)



**THE STUDY ON SEISMIC MICROZONING OF THE GREATER TEHRAN AREA
 IN THE ISLAMIC REPUBLIC OF IRAN**

Centre for Earthquake and Environmental Studies of Tehran (CEST)
 Japan International Cooperation Agency (JICA)

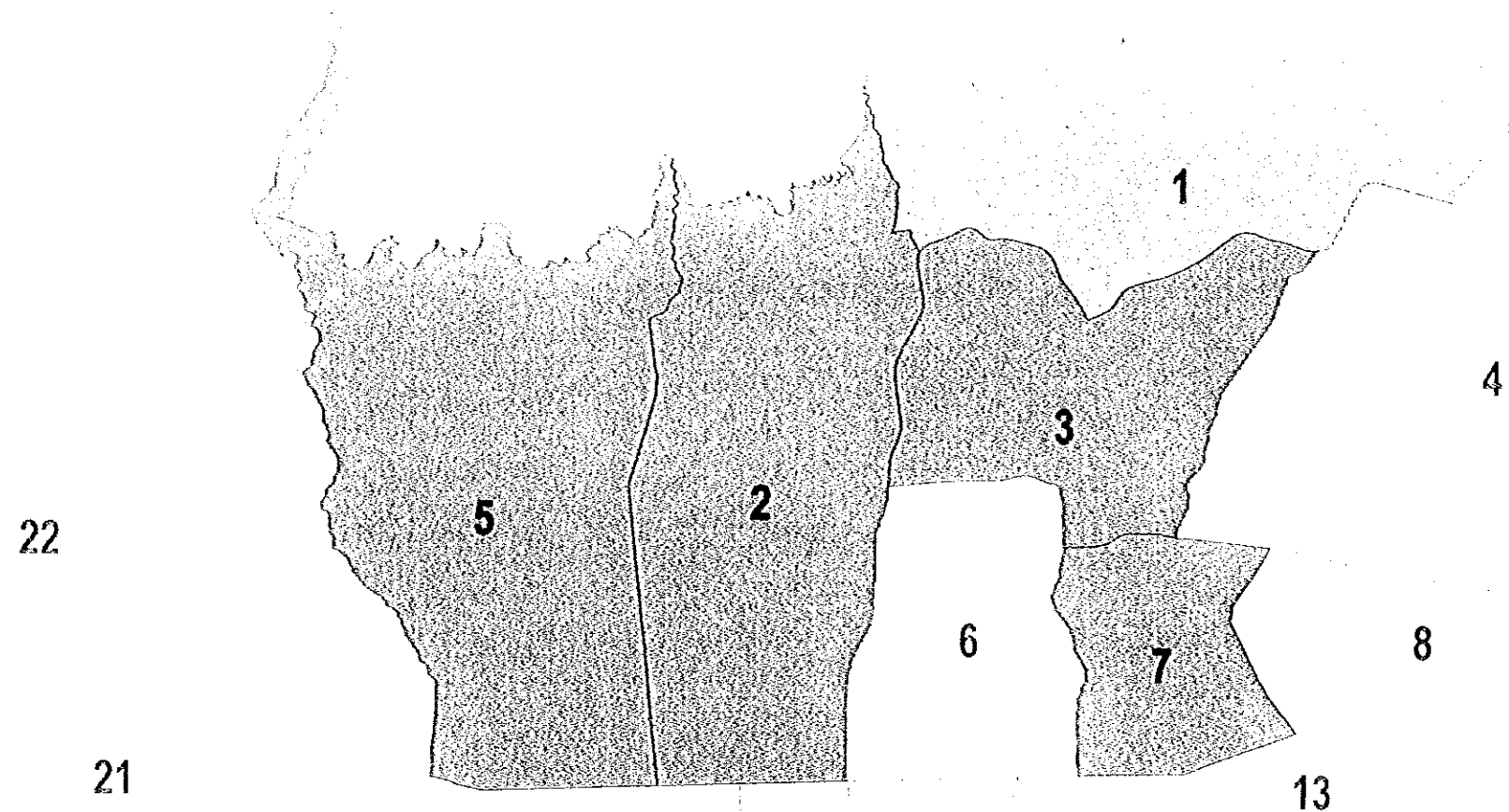
Damage Ratio of Governmental Facilities (Ray Fault model)



THE STUDY ON SEISMIC MICROZONING OF THE GREATER TEHRAN AREA
IN THE ISLAMIC REPUBLIC OF IRAN

Centre for Earthquake and Environmental Studies of Tehran (CEST)
Japan International Cooperation Agency (JICA)

Damage Ratio of Governmental Facilities (Ray Fault model)



Legend

Damage Ratio (%)

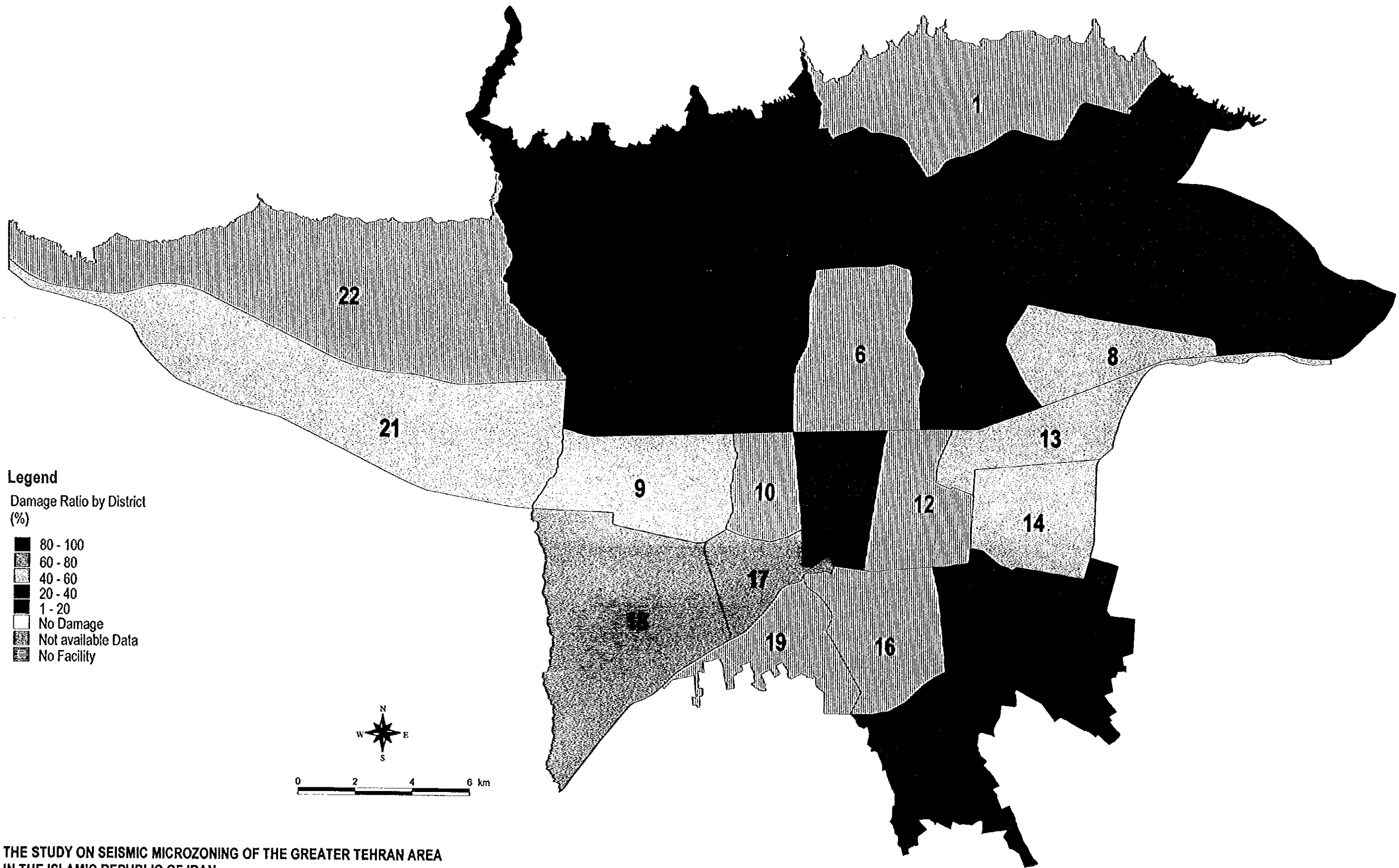
- 80-100
- 60-80
- 40-60
- 20-40
- 1-20
- No Damage
- Not available Data
- No Facility



THE STUDY ON SEISMIC MICROZONING OF THE GREATER TEHRAN AREA
IN THE ISLAMIC REPUBLIC OF IRAN

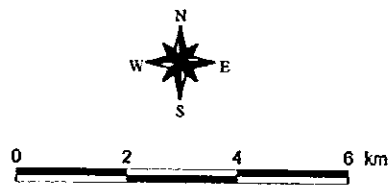
Centre for Earthquake and Environmental Studies of Tehran (CESE)
Japan International Cooperation Agency (JICA)

Damage Ratio of Police Station (Ray Fault model)



Legend
Damage Ratio by District (%)

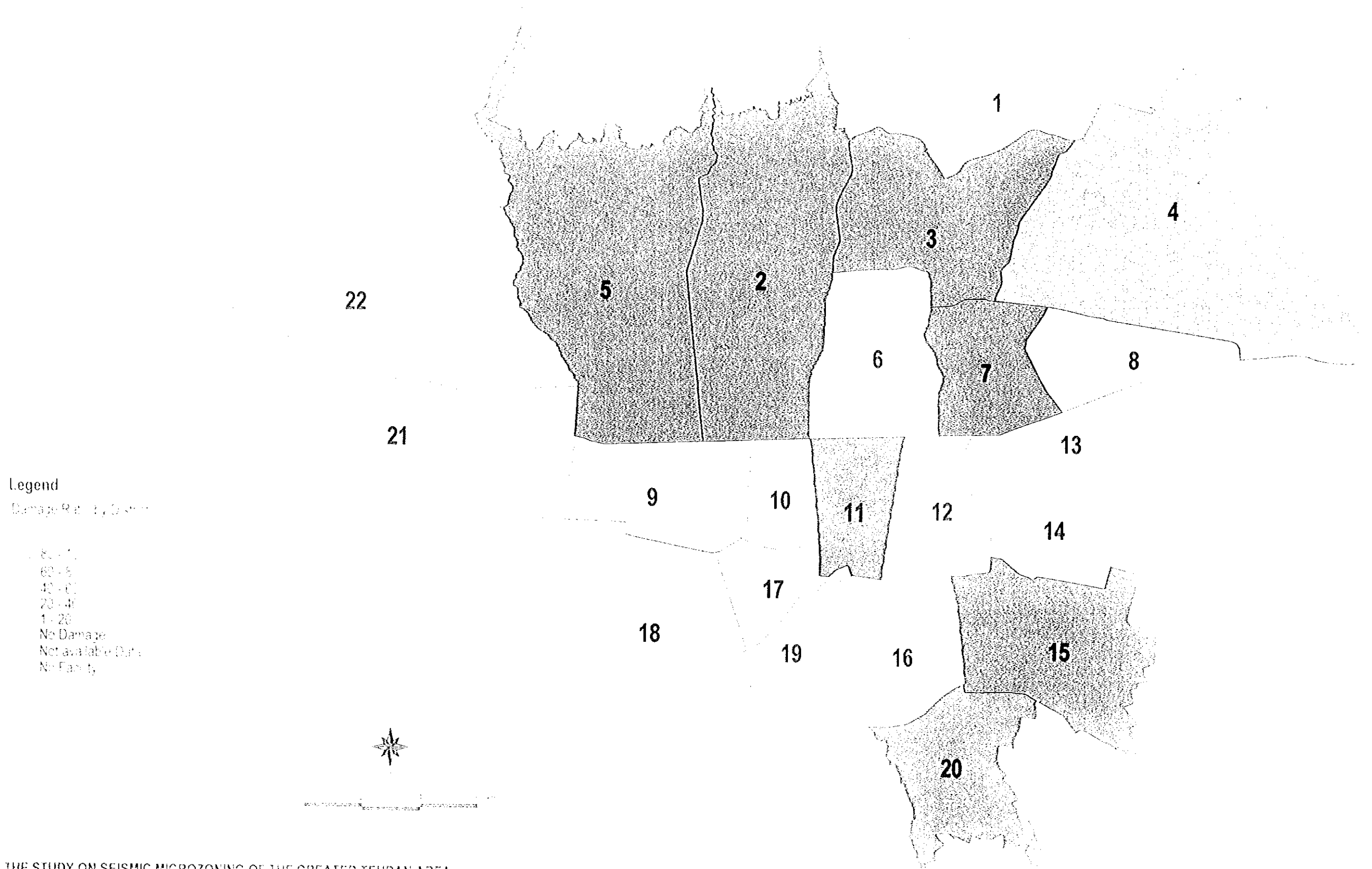
- 80 - 100
- 60 - 80
- 40 - 60
- 20 - 40
- 1 - 20
- No Damage
- Not available Data
- No Facility



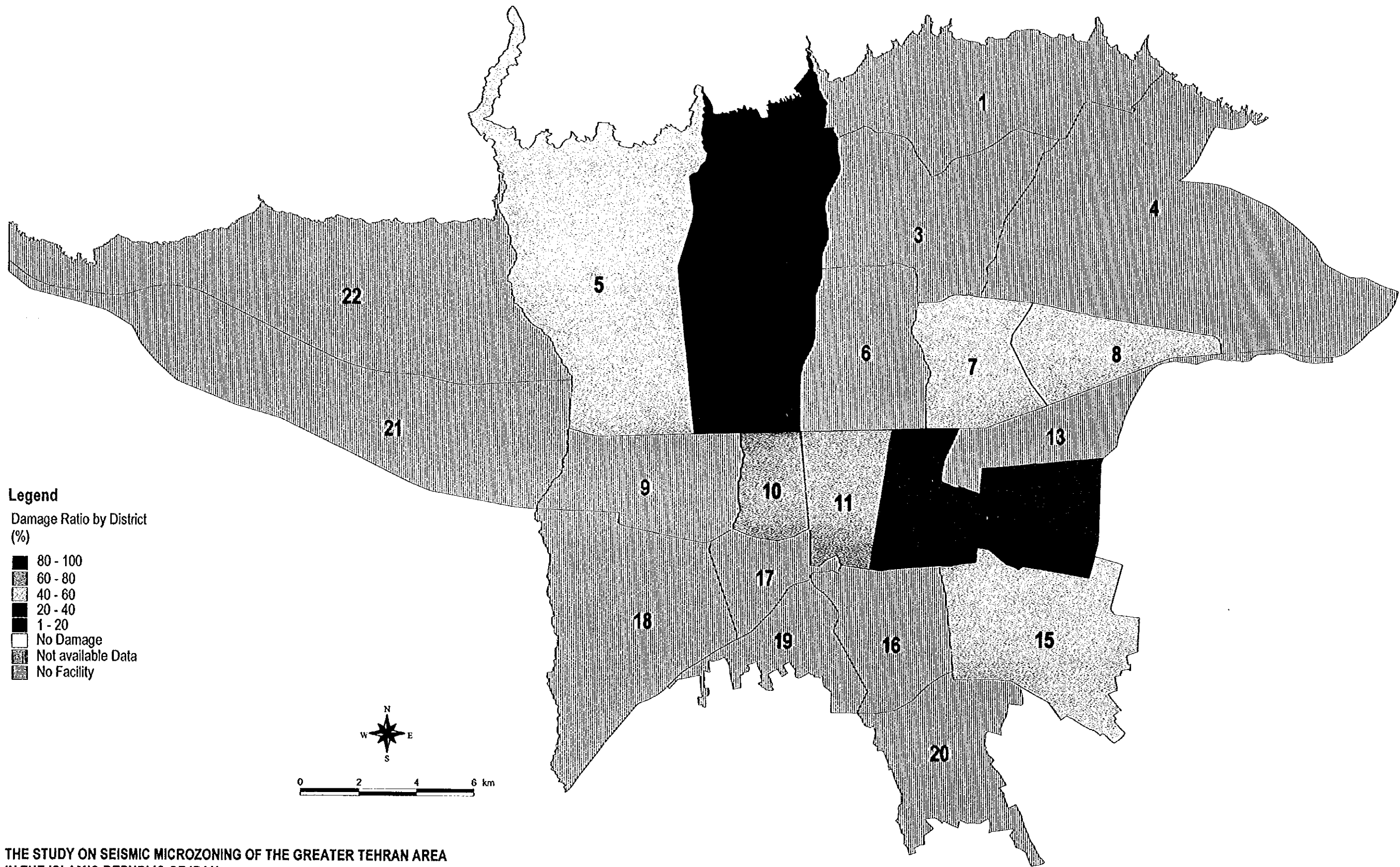
THE STUDY ON SEISMIC MICROZONING OF THE GREATER TEHRAN AREA
IN THE ISLAMIC REPUBLIC OF IRAN

Centre for Earthquake and Environmental Studies of Tehran (CEST)
Japan International Cooperation Agency (JICA)

Damage Ratio of Police Station (Ray Fault model)



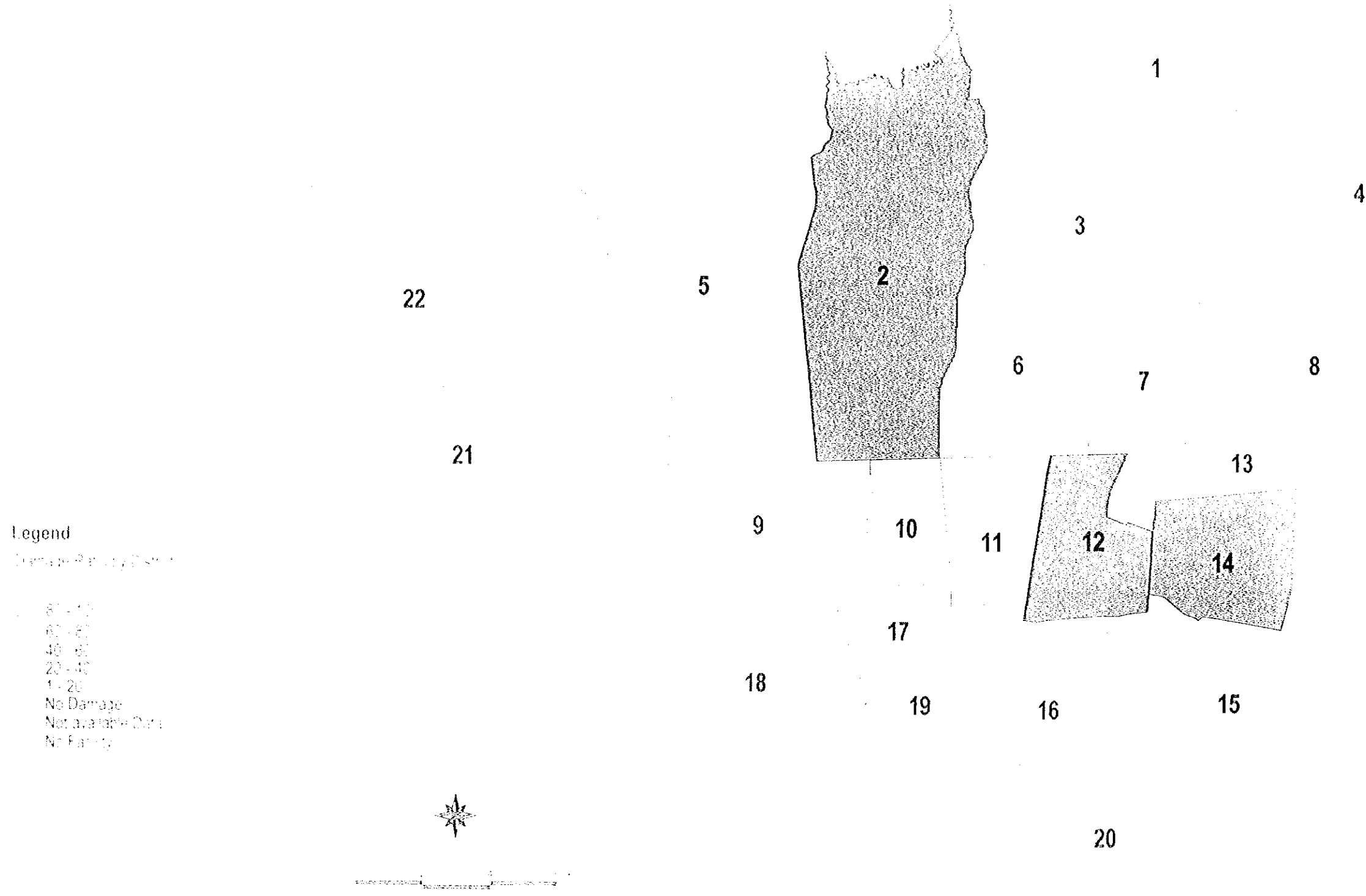
Damage Ratio of Traffic Police Station (Ray Fault model)



THE STUDY ON SEISMIC MICROZONING OF THE GREATER TEHRAN AREA
IN THE ISLAMIC REPUBLIC OF IRAN

Centre for Earthquake and Environmental Studies of Tehran (CEST)
Japan International Cooperation Agency (JICA)

Damage Ratio of Traffic Police Station (Ray Fault model)



THE STUDY ON SEISMIC MICROZONING OF THE GREATER TEHRAN AREA
IN THE ISLAMIC REPUBLIC OF IRAN

Centre for Earthquake and Environmental Studies of Tehran (CEST),
Japan International Cooperation Agency (JICA)