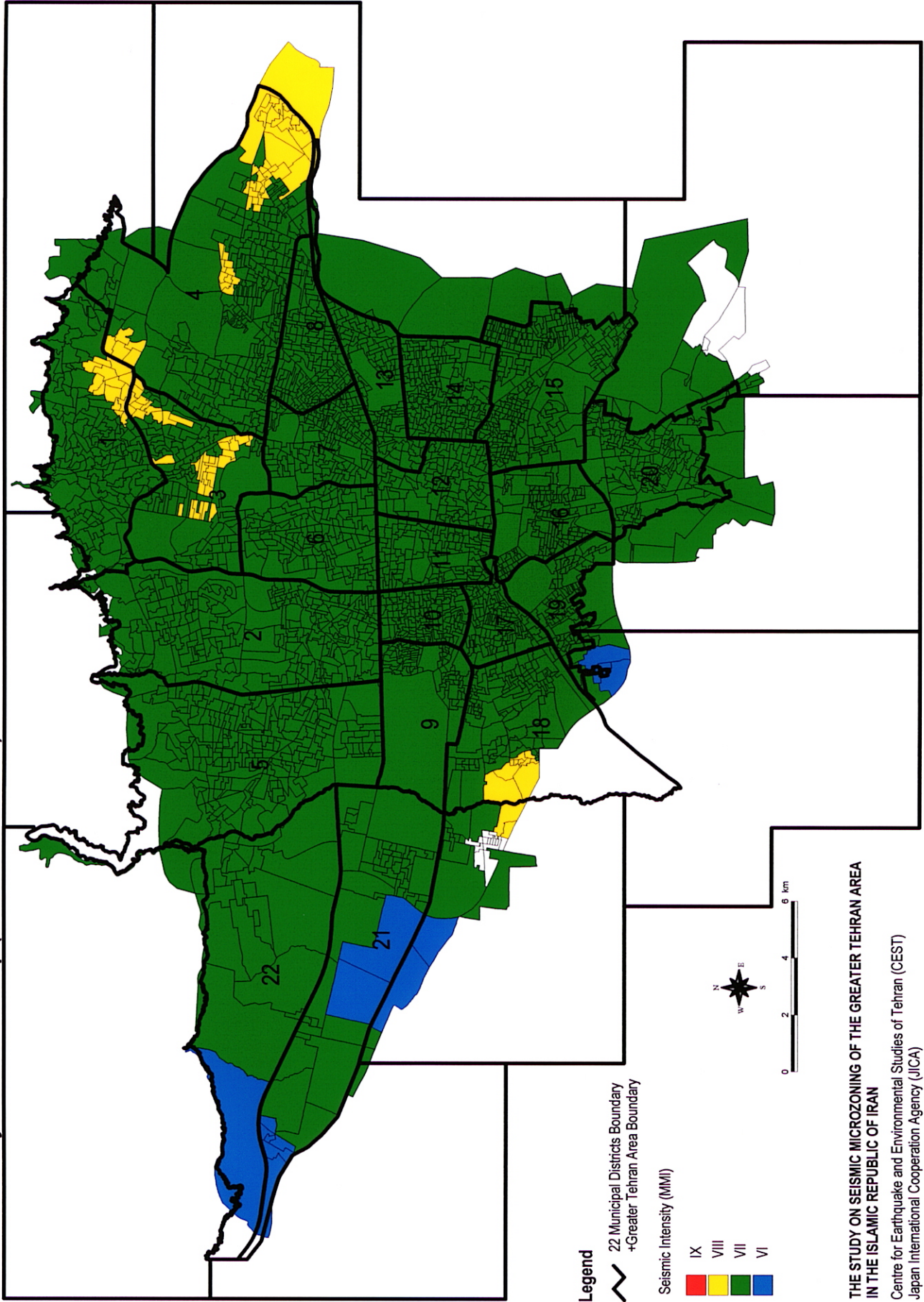


Figure 3.5.8

Seismic Intensity Distribution Map (Mosha Fault model)

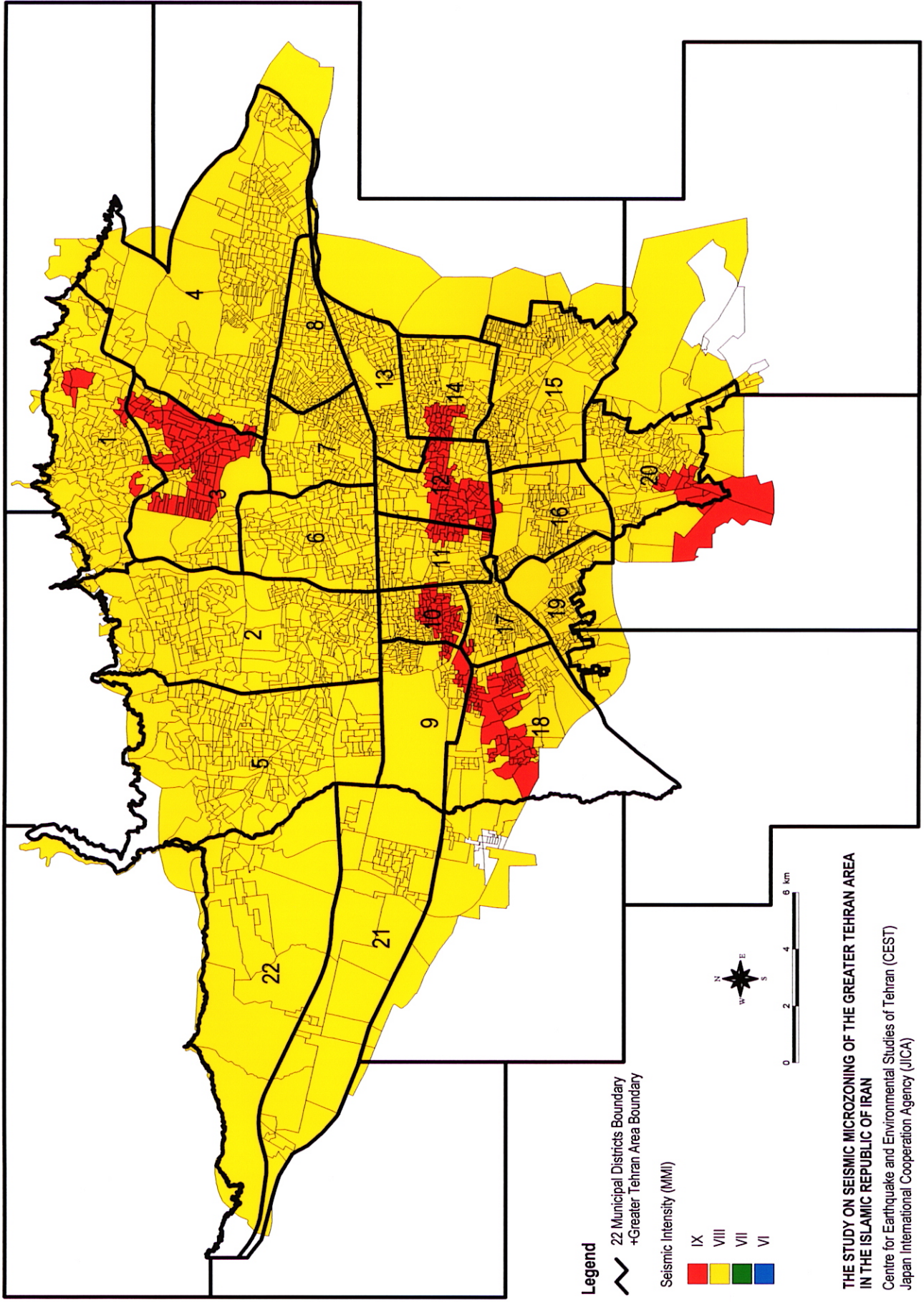


THE STUDY ON SEISMIC MICROZONING OF THE GREATER TEHRAN AREA
IN THE ISLAMIC REPUBLIC OF IRAN

Centre for Earthquake and Environmental Studies of Tehran (CEST)
Japan International Cooperation Agency (JICA)

Figure 3.5.9

Seismic Intensity Distribution Map (Floating model)



References for section 3.5

Trifunac, M.D. and A.G. Brady, 1975, On the Correlation of Seismoscope Response with Earthquake Magnitude and Modified Mercalli Intensity, Bull. Seism. Soc. Am., Vol.65, No.2.