

### **2.2.13. Hazardous Facilities**

Hazardous facilities can be identified as the facilities (mainly petrol stations, factories, etc.) which handle hazardous and dangerous substances. These facilities may cause secondary disasters such as fire outbreaks, explosions, etc. At the time of an earthquake, listing and knowing the location of these facilities can minimise or prevent damage.

For collection of hazardous facilities data, the fire fighting department of the Tehran Municipality cooperated to create the database. In Tehran, a total of approximately 1,500 facilities are considered hazardous facilities, according to their categorisation. The department prepared the location map of 840 facilities in total, and the Study Team digitised the locations for use in the GIS database and included necessary attribute data.

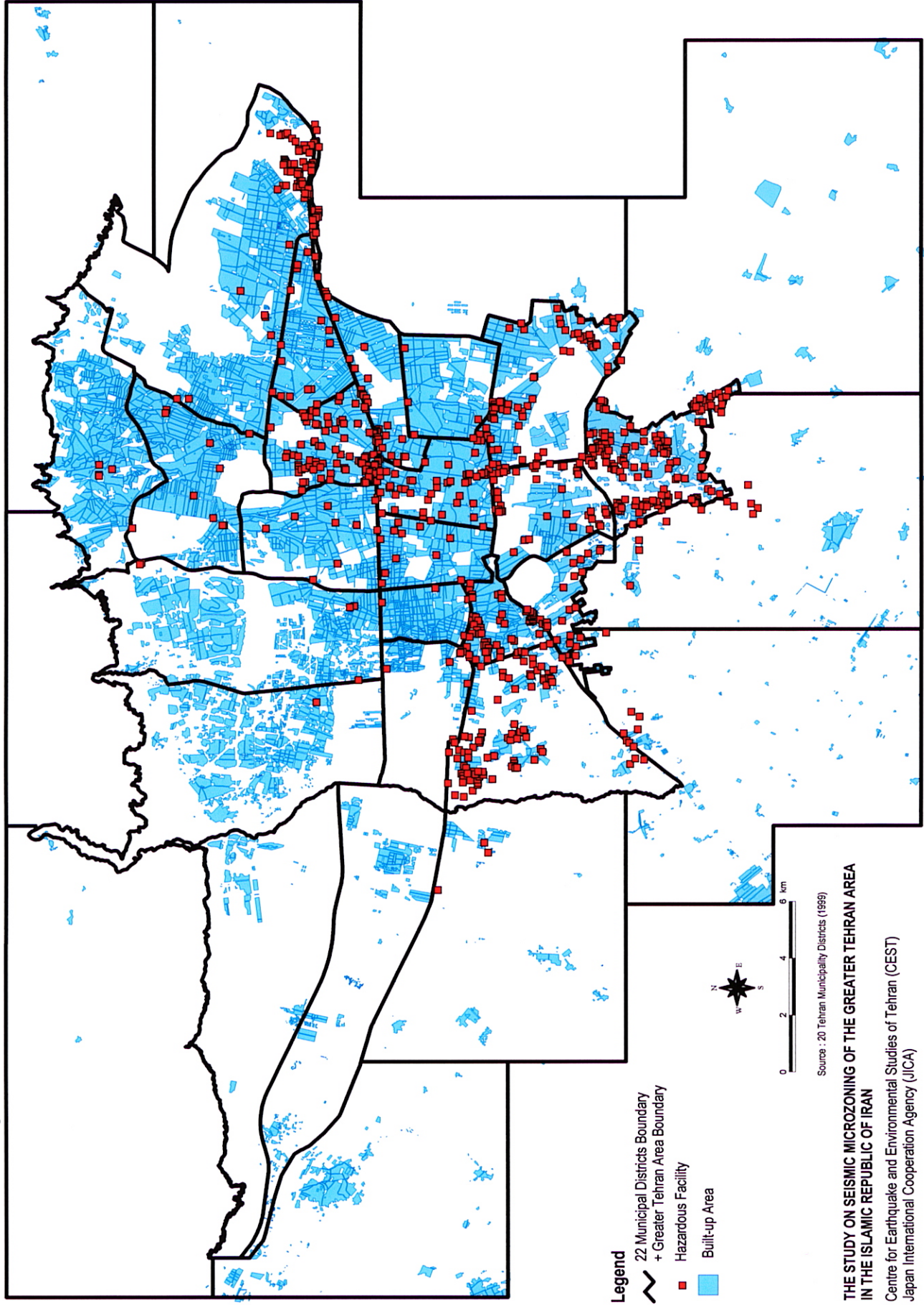
In the database prepared by the fire fighting department, many outdated data were found through a random check. For instance, many kerosene distributors included in the database are no longer in business or have changed location. The data, which is outdated, cannot be trusted and it may lead to a serious disaster in the event of an earthquake. Therefore, it is urgently recommended to update the data as soon as possible.

Since lack of addresses and inaccuracies were found in the data supplied, a location map could not be completed. Also, there were many facilities included in the database which were not considered as hazardous facilities and were eliminated for the damage analysis.

Figure 2.2.38 shows the location of hazardous facilities, as prepared by the fire fighting department of the Tehran Municipality.

Figure 2.2.38

### Hazardous Facility



**Chapter 3:**  
**Earthquake Analysis**