

## (2) Building Storey

For the study, SCI cooperated to complement 1996 census data with building storey data supplied by the Post Office. A summarized table building storey distribution is shown in Table 2.2.12. The data is obscure for 14% of Tehran's total buildings, and accuracy of the data is not high. Therefore, further data collection/revision/correction is necessary.

By observing existing data prepared by SCI, 68% of the buildings within Tehran's 22 districts have up to 3 stories. In Districts 2, 3, 5, 6, 21 and 22, the percentage of buildings with less than 3 stories is 41% - 56%. Therefore, it can be said that the ratio of low-rise residential building in these districts is relatively low. On the other hand, in Districts 10, 13, 14, 16, 17, 18, 19 and 20, the percentage of buildings have less than 3 stories is more than 75%, a percentage which can be considered comparatively high. Particularly, in District 17, 90% of buildings have less than 3 stories, while in both Districts 10 and 18, 79% of buildings have less than 3 stories.

Figure 2.2.15 to Figure 2.2.17 show building distribution by storey for Tehran's 22 Municipal Districts.

**Table 2.2.12 Building Distribution by Storey (Dwelling Unit)**

District	ST1-3	ST4-15	OVER ST15	Unknown	Total by District
1	43,117	12,102	513	6,826	62,558
2	63,700	35,335	3,082	15,481	117,598
3	36,402	24,851	1,169	7,771	70,193
4	103,365	24,057	314	19,793	147,529
5	56,811	23,271	3	22,456	102,541
6	24,420	28,545	117	6,030	59,112
7	46,845	24,664	94	6,456	78,059
8	60,955	13,242	5	9,319	83,521
9	28,250	3,961	2	5,613	37,826
10	48,970	8,231	2	4,992	62,195
11	35,600	14,502	71	4,123	54,296
12	29,200	4,585	7	5,453	39,245
13	44,989	6,653	5	7,458	59,105
14	65,640	9,338	2	12,464	87,444
15	90,622	8,493	22	23,475	122,612
16	41,490	4,329	2	4,267	50,088
17	38,239	1,208	0	2,831	42,278
18	37,168	1,014	2	9,156	47,340
19	33,148	1,327	0	8,058	42,533
20	55,679	5,692	8	9,220	70,599
21	19,940	4,479	10	11,055	35,484
22	6,549	2,103	0	3,330	11,982
Total	1,011,099	261,982	5,430	205,627	1,484,138
Percentage	68.1	17.7	0.4	13.9	100

Source: Statistics Center of Iran (1999)

Figure 2.2.15

**Building Distribution by Storey (1 - 3 Storeys) [Dwelling Unit]**

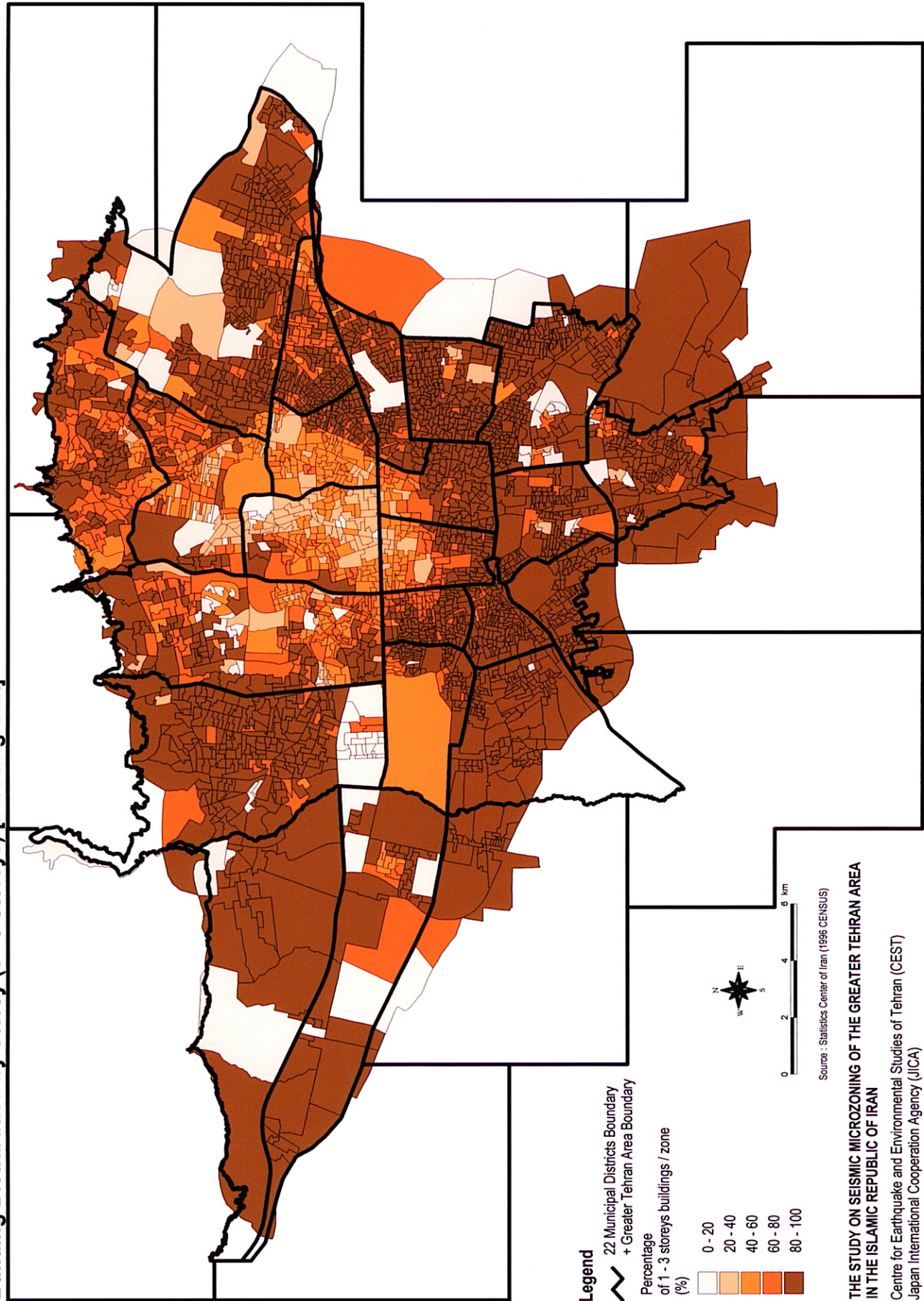


Figure 2.2.16

Building Distribution by storey (4 - 15 Storeys) [Dwelling Unit]

