

2.2.7. Population

According to the 1996 population census, the total population of Tehran for its 22 districts is calculated at 6,742,165. Population distribution by each census zone is shown in Figure 2.2.9. District 4 has the largest population, counted at 663 thousand, and district 15 has the second-largest population, counted at 622 thousand. The least populated district is District 22, with 56 thousand. Districts 9, 12 and 21 also have relatively smaller populations.

Population density is also calculated by census zone and based on 1996 population census data (Table 2.2.8 and Figure 2.2.10). The average population density of the entire city of Tehran is 110 persons per hectare. The average density of District 10 is 349 person/ha and 347 person/ha in District 17. These two districts have the highest population density values. District 14 has 269 person/ha and District 8 has 250 person/ha. These are the second-highest density districts in Tehran. On the contrary, the district with the lowest population density is District 22, with 9 person/ha. The second lowest district is District 21, with 36 person/ha. The density of Districts 1, 2, 3 and 4, which are located in northern Tehran, is shown to be between 71 person/ha and 92 person/ha.

Table 2.2.8 Population / Density Distribution by Districts

District	No of Census Zones	Number of Census Zones		Highest Population Density (person/ha)		Area (ha)	Population	Population Density (Person/ha)
		Density exceeds 600 p/ha	Density exceeds 800 p/ha	Density (p/ha)	Zone No.			
1	163	0	0	391	01075	3,462	245,502	71
2	238	0	0	313	02149	4,968	456,414	92
3	155	0	0	449	03108	2,945	259,019	88
4	297	5	0	710	04133	7,260	663,166	91
5	215	1	0	673	05033	5,915	427,955	72
6	123	0	0	324	06088	2,149	220,331	103
7	151	0	0	554	07081	1,541	300,212	195
8	150	5	0	712	08014	1,327	332,005	250
9	80	10	0	761	09047	1,960	173,482	89
10	125	2	0	632	10083	808	282,308	349
11	110	0	0	446	11089	1,189	225,840	190
12	108	0	0	422	12060	1,359	189,625	140
13	113	0	0	508	13034	1,391	245,142	176
14	168	1	0	621	14119	1,459	392,524	269
15	252	33	4	878	15060	2,852	622,517	219
16	129	6	0	744	16077	1,649	298,410	181
17	109	30	0	783	17082	829	287,367	347
18	121	14	1	826	18097	3,794	293,598	77
19	88	8	0	680	19041	1,152	227,389	197
20	167	0	0	588	20093	2,033	354,449	174
21	85	4	0	778	21048	5,208	188,890	36
22	26	0	0	164	22010	6,154	56,020	9
Total	3,173	119	5			61,404	6,742,165	110

Source: Statistics Center of Iran (1996)

As shown in Table 2.2.8, it is remarkable that Districts 9,15,17 and 18 have more than 10 census zones with densities of more than 600 persons/ha. A detailed list of these census zones is shown in Table 2.2.9.

Table 2.2.9 List of Census Zones (more than 600persons/ha)

District	Census Zone No.	Population	Area (ha)	Population Density (P/ha)
4	04121	2,054	3.11	661
	04126	2,132	3.43	621
	04130	1,832	2.99	612
	04132	2,323	3.68	632
	04133	2,395	3.37	710
5	05033	2,393	3.55	673
8	08014	2,378	3.34	712
	08015	2,170	3.05	711
	08025	2,454	3.89	632
	08028	2,224	3.55	627
	08030	2,363	3.60	657
9	09028	2,007	2.82	711
	09029	2,066	2.94	703
	09030	1,905	2.90	656
	09035	2,210	3.48	636
	09043	1,965	3.24	606
	09045	2,038	2.93	696
	09047	2,021	2.66	761
	09049	1,831	2.94	624
	09053	2,026	3.29	615
09063	1,984	3.26	609	
10	10052	2,515	4.05	621
	10083	2,435	3.85	632
14	14119	2,302	3.70	621
15	15013	2,206	2.68	822
	15014	2,070	3.31	626
	15015	2,216	2.97	747
	15016	2,241	3.59	624
	15017	2,430	3.96	614
	15023	2,117	3.38	627
	15049	2,389	3.85	621
	15050	2,438	3.95	617
	15052	2,373	3.47	684
	15053	2,303	3.38	682
	15055	2,334	2.91	803
	15056	2,143	3.46	619
	15058	2,212	2.92	758
	15059	2,129	2.74	777
	15060	2,302	2.62	878
	15062	2,222	3.18	698
	15064	2,242	2.99	750
	15065	2,280	3.80	600
	15067	2,301	3.37	682
	15074	2,171	3.45	629
15081	2,111	3.04	694	
15086	2,060	2.71	759	
15087	2,429	3.33	730	
15089	2,273	3.57	636	
15093	2,357	2.76	854	
15103	2,535	3.92	646	

15	15106	2,348	3.49	673
	15108	2,018	3.18	635
	15113	2,309	3.00	770
	15133	2,595	4.15	626
	15135	2,349	3.53	665
	15210	2,618	4.29	611
	15228	2,719	4.35	626
16	16075	2,458	3.81	645
	16076	2,467	3.78	653
	16077	2,531	3.40	744
	16085	2,276	3.55	642
	16087	2,285	3.61	633
	16088	2,183	3.27	668
17	17013	2,343	3.64	644
	17032	2,804	4.25	660
	17034	2,554	4.13	618
	17040	2,516	3.67	685
	17042	2,668	3.69	722
	17043	2,484	3.34	744
	17044	2,582	4.21	613
	17046	2,623	3.53	744
	17047	2,518	3.49	722
	17048	2,486	3.55	701
	17049	2,426	3.15	771
	17050	2,323	3.28	709
	17051	2,440	3.70	659
	17055	2,894	4.52	640
	17057	2,466	3.67	672
	17059	2,692	3.68	731
	17061	2,712	4.12	659
	17067	2,499	3.79	660
	17074	2,836	3.87	733
	17079	3,497	5.41	646
	17081	2,786	4.34	643
	17082	2,915	3.72	783
	17083	3,157	5.20	608
	17084	2,723	4.48	608
	17085	3,338	4.88	685
17094	2,398	3.41	703	
17096	2,529	4.02	629	
17097	2,676	4.08	656	
17098	2,502	4.09	612	
17100	2,524	3.58	705	
18	18006	2,589	3.58	723
	18007	2,798	4.40	636
	18013	2,540	4.03	630
	18063	2,399	3.80	632
	18064	2,526	4.18	605
	18067	2,337	3.86	605
	18080	2,520	3.62	697
	18082	2,274	3.53	645
	18088	2,349	3.81	617
	18097	2,351	2.84	826
	18098	2,444	3.37	725
	18099	2,430	3.51	692
	18119	2,810	4.07	691
	18124	2,319	3.58	647
19	19012	2,511	3.91	642
	19014	2,502	3.73	672

19	19016	2,653	4.28	619
	19018	2,655	4.28	620
	19019	2,543	3.83	664
	19025	2,624	4.34	605
	19041	2,499	3.67	680
	19042	2,394	3.58	668
21	21048	2,232	2.87	778
	21053	2,117	3.48	608
	21054	2,380	3.43	695
	21055	2,240	2.93	765

Figure 2.2.9

Population

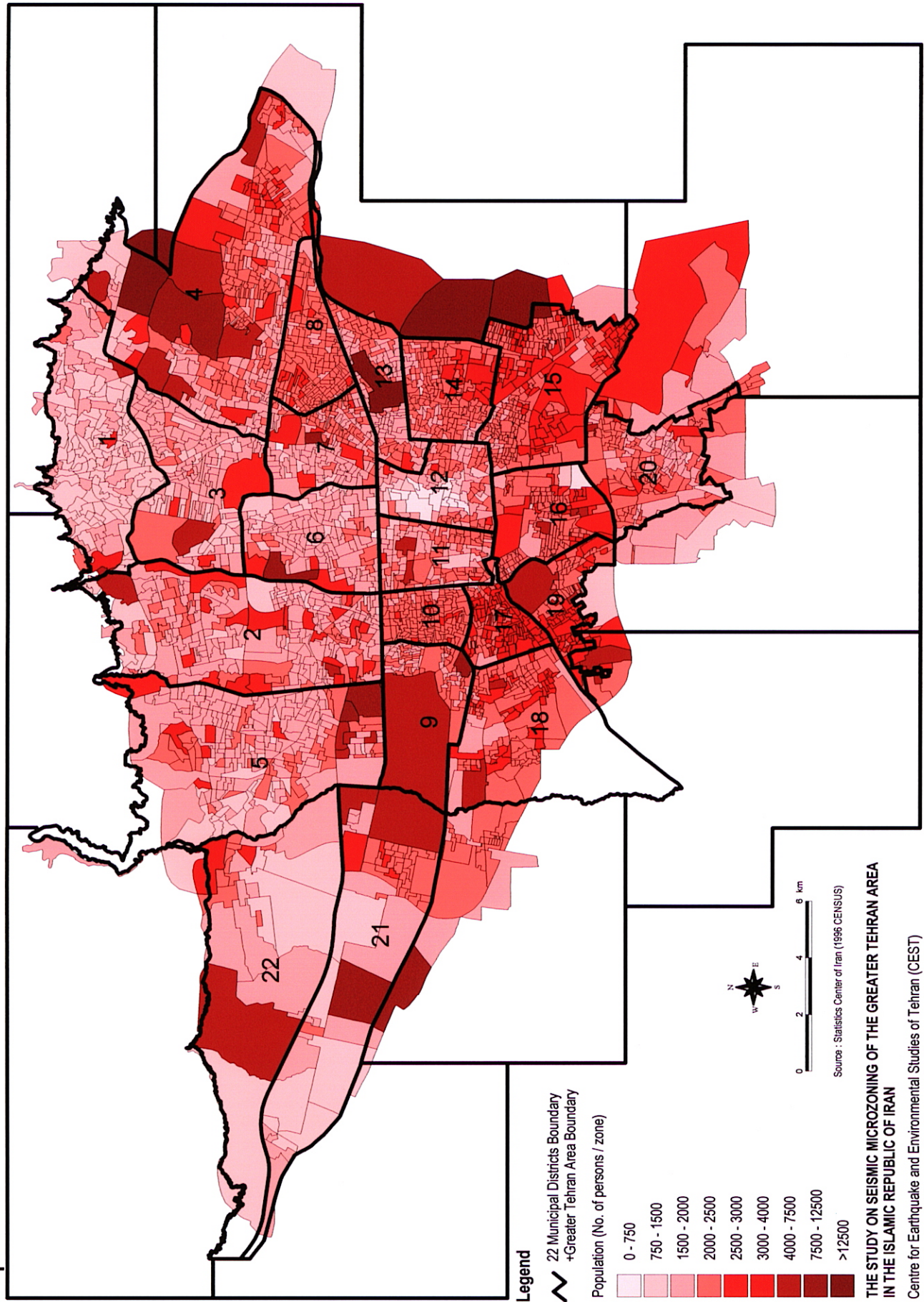


Figure 2.2.10

Population Density

