

2.2.6. Existing Land Use

Existing land use of the study area was generated by selecting necessary map layers prepared for 1:25,000 topographical mapping in 1995 by the Tehran GIS Center (Figure 2.2.8). The selected thirteen map layers are as follow:

- 1) Buildings
- 2) Built-up Area
- 3) Forest
- 4) Orchard -Trees
- 5) Vineyard
- 6) Bushes
- 7) Cultivated Land
- 8) Park
- 9) Sand Dune
- 10) Salt Land
- 11) Drainage
- 12) Road
- 13) Railway

In these map layers, built-up areas, which represent the existing urbanised areas of Tehran, were calculated for each district. Results are shown in Table 2.2.7. In this table, Districts 7, 8, 10, 11, 12 and 14 are densely made up of built-up areas, and they have limited open space. Districts 6, 13 and 17 are also densely urbanised. Districts 21 and 22, located in western Tehran, have a very small built-up area ratio (less than 10%), although new residential areas are being developed. The built-up ratio of District 18 is also a very small value (13%). The airport and military base are located in Districts 9, 13 and 19. Extensive open space is shown as white zones on the map.

Figure 2.2.8

Land Use

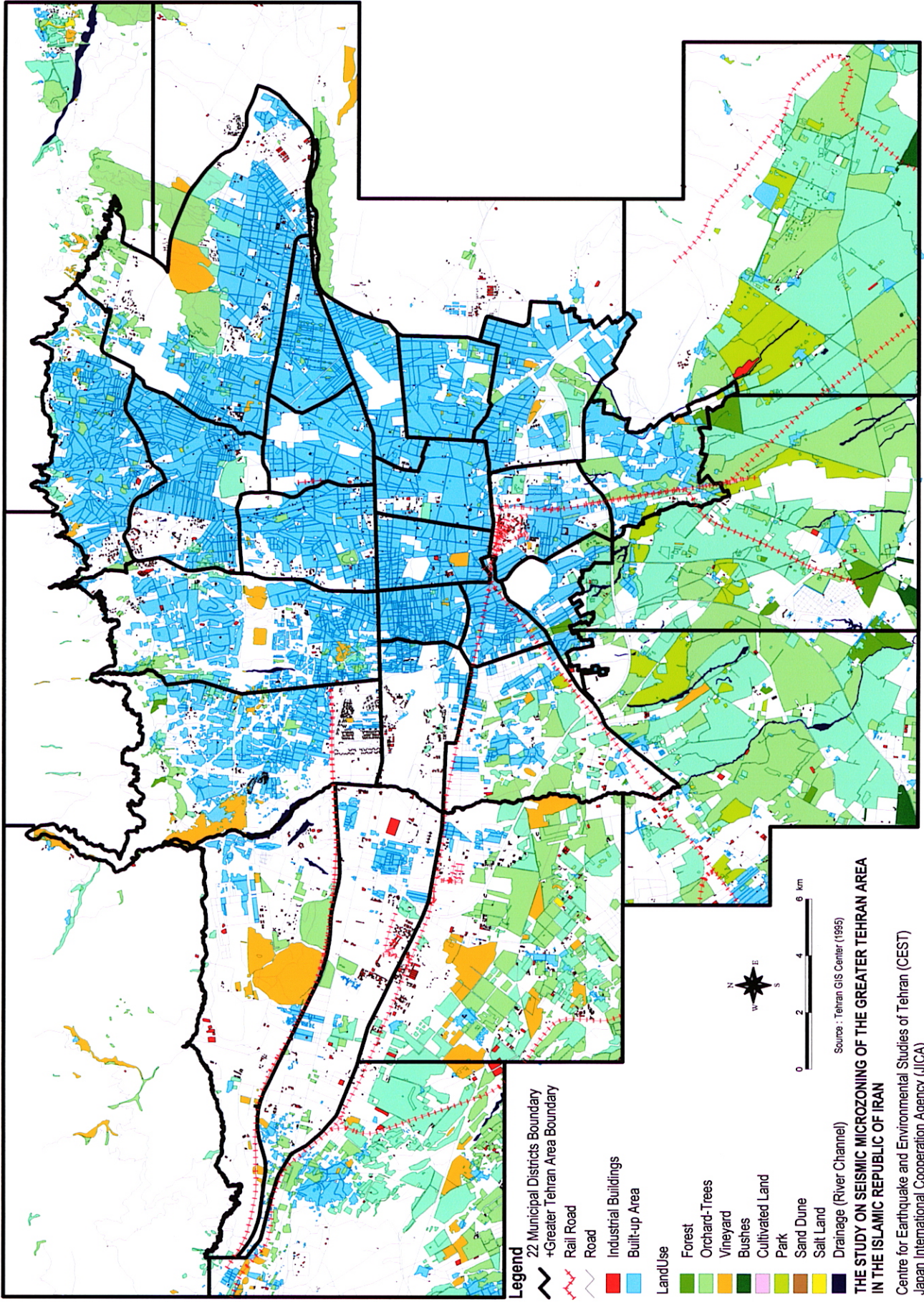


Table 2.2.7 Built-up Area

District	Area (ha)	Built-up Area (ha)	Built-up area ratio (%)	Population	Population Density (Person/ha)
1	3,462	1,826	53	245,502	71
2	4,968	1,910	38	456,414	92
3	2,945	1,639	56	259,019	88
4	7,260	2,645	36	663,166	91
5	5,915	1,431	24	427,955	72
6	2,149	1,291	60	220,331	103
7	1,541	1,082	70	300,212	195
8	1,327	1,074	81	332,005	250
9	1,960	290	15	173,482	89
10	808	604	75	282,308	349
11	1,189	881	74	225,840	190
12	1,359	1,074	79	189,625	140
13	1,391	850	61	245,142	176
14	1,459	1,067	73	392,524	269
15	2,852	1,371	48	622,517	218
16	1,649	678	41	298,410	181
17	829	536	65	287,367	347
18	3,794	508	13	293,598	77
19	1,152	407	35	227,389	197
20	2,033	796	39	354,449	174
21	5,208	394	8	188,890	36
22	6,154	234	4	56,020	9
Total	61,404	22,588	37	6,742,165	110

Source: Statistics Center of Iran (1996)