

JAPAN INTERNATIONAL COOPERATION AGENCY (JICA)

MINISTRY OF NATURAL RESOURCES (MNR)

SOLOMON ISLANDS ELECTRICITY AUTHORITY (SIEA)

THE SOLOMON ISLANDS

**MASTER PLAN STUDY
OF
POWER DEVELOPMENT
IN
SOLOMON ISLANDS**

FINAL REPORT

**VOLUME
APPENDIX**

JANUARY 2001

**TOKYO ELECTRIC POWER SERVICES CO., LTD.
IC NET LIMITED**

鉦資調
J R
00-220

List of Appendix (1)

No.	Title	Page
Chapter 4		
Appendix 4-2-1	Area served by the existing SIEA's powerstation (Guadalcanal)	A4-1
Appendix 4-2-2	Area served by the existing SIEA's powerstation (Auki, Malu'u)	A4-2
Appendix 4-2-3	Area served by the existing SIEA's powerstation (Buala)	A4-3
Appendix 4-2-4	Area served by the existing SIEA's powerstation (Kirakira)	A4-4
Appendix 4-2-5	Area served by the existing SIEA's powerstation (Lata)	A4-5
Appendix 4-2-6	Area served by the existing SIEA's powerstation (Gizo, Noro-Munda)	A4-6
Chapter 5		
Appendix 5-1-1	Hydro Potential Map of Guadalcanal	A5-1
Appendix 5-1-1 (1)	Hydro Potential Map of Guadalcanal (1)	A5-2
Appendix 5-1-1 (2)	Hydro Potential Map of Guadalcanal (2)	A5-3
Appendix 5-1-1 (3)	Hydro Potential Map of Guadalcanal (3)	A5-4
Appendix 5-1-1 (4)	Hydro Potential Map of Guadalcanal (4)	A5-5
Appendix 5-1-1 (5)	Hydro Potential Map of Guadalcanal (5)	A5-6
Appendix 5-1-1 (6)	Hydro Potential Map of Guadalcanal (6)	A5-7
Appendix 5-1-1 (7)	Hydro Potential Map of Guadalcanal (7)	A5-8
Appendix 5-1-1 (8)	Hydro Potential Map of Guadalcanal (8)	A5-9
Appendix 5-1-1 (9)	Hydro Potential Map of Guadalcanal (9)	A5-10
Appendix 5-1-1 (10)	Hydro Potential Map of Guadalcanal (10)	A5-11
Appendix 5-1-1 (11)	Hydro Potential Map of Guadalcanal (11)	A5-12
Appendix 5-1-1 (12)	Hydro Potential Map of Guadalcanal (12)	A5-13
Appendix 5-1-1 (13)	Hydro Potential Map of Guadalcanal (13)	A5-14
Appendix 5-1-1 (14)	Hydro Potential Map of Guadalcanal (14)	A5-15
Appendix 5-1-1 (15)	Hydro Potential Map of Guadalcanal (15)	A5-16
Appendix 5-1-1 (16)	Hydro Potential Map of Guadalcanal (16)	A5-17
Appendix 5-1-1 (17)	Hydro Potential Map of Guadalcanal (17)	A5-18
Appendix 5-1-1 (18)	Hydro Potential Map of Guadalcanal (18)	A5-19
Appendix 5-1-1 (19)	Hydro Potential Map of Guadalcanal (19)	A5-20
Appendix 5-1-1 (20)	Hydro Potential Map of Guadalcanal (20)	A5-21
Appendix 5-1-1 (21)	Hydro Potential Map of Guadalcanal (21)	A5-22
Appendix 5-1-1 (22)	Hydro Potential Map of Guadalcanal (22)	A5-23
Appendix 5-1-1 (23)	Hydro Potential Map of Guadalcanal (23)	A5-24
Appendix 5-1-1 (24)	Hydro Potential Map of Guadalcanal (24)	A5-25
Appendix 5-1-1 (25)	Hydro Potential Map of Guadalcanal (25)	A5-26
Appendix 5-1-1 (26)	Hydro Potential Map of Guadalcanal (26)	A5-27
Appendix 5-1-2	Hydro Potential Map of Malaita	A5-28
Appendix 5-1-2 (1)	Hydro Potential Map of Malaita (1)	A5-29
Appendix 5-1-2 (2)	Hydro Potential Map of Malaita (2)	A5-30
Appendix 5-1-2 (3)	Hydro Potential Map of Malaita (3)	A5-31
Appendix 5-1-2 (4)	Hydro Potential Map of Malaita (4)	A5-32
Appendix 5-1-2 (5)	Hydro Potential Map of Malaita (5)	A5-33
Appendix 5-1-2 (6)	Hydro Potential Map of Malaita (6)	A5-34
Appendix 5-1-2 (7)	Hydro Potential Map of Malaita (7)	A5-35
Appendix 5-1-2 (8)	Hydro Potential Map of Malaita (8)	A5-36
Appendix 5-1-2 (9)	Hydro Potential Map of Malaita (9)	A5-37
Appendix 5-1-2 (10)	Hydro Potential Map of Malaita (10)	A5-38
Appendix 5-1-2 (11)	Hydro Potential Map of Malaita (11)	A5-39
Appendix 5-1-2 (12)	Hydro Potential Map of Malaita (12)	A5-40

List of Appendix (2)

No.	Title	Page
Chapter 5		
Appendix 5-1-2 (13)	Hydro Potential Map of Malaita (13)	A5-41
Appendix 5-1-3	Hydro Potential Map of Santa Isabel	A5-42
Appendix 5-1-3 (1)	Hydro Potential Map of Santa Isabel (1)	A5-43
Appendix 5-1-3 (2)	Hydro Potential Map of Santa Isabel (2)	A5-44
Appendix 5-1-3 (3)	Hydro Potential Map of Santa Isabel (3)	A5-45
Appendix 5-1-4	Hydro Potential Map of New Georgia	A5-46
Appendix 5-1-4 (1)	Hydro Potential Map of New Georgia (1)	A5-47
Appendix 5-1-4 (2)	Hydro Potential Map of New Georgia (2)	A5-48
Appendix 5-1-4 (3)	Hydro Potential Map of New Georgia (3)	A5-49
Appendix 5-1-4 (4)	Hydro Potential Map of New Georgia (4)	A5-50
Appendix 5-1-4 (5)	Hydro Potential Map of New Georgia (5)	A5-51
Appendix 5-1-4 (6)	Hydro Potential Map of New Georgia (6)	A5-52
Appendix 5-1-4 (7)	Hydro Potential Map of New Georgia (7)	A5-53
Appendix 5-1-4 (8)	Hydro Potential Map of New Georgia (8)	A5-54
Appendix 5-1-4 (9)	Hydro Potential Map of New Georgia (9)	A5-55
Appendix 5-1-4 (10)	Hydro Potential Map of New Georgia (10)	A5-56
Appendix 5-1-4 (11)	Hydro Potential Map of New Georgia (11)	A5-57
Appendix 5-1-4 (12)	Hydro Potential Map of New Georgia (12)	A5-58
Appendix 5-1-4 (13)	Hydro Potential Map of New Georgia (13)	A5-59
Appendix 5-1-4 (14)	Hydro Potential Map of New Georgia (14)	A5-60
Appendix 5-1-4 (15)	Hydro Potential Map of New Georgia (15)	A5-61
Appendix 5-1-4 (16)	Hydro Potential Map of New Georgia (16)	A5-62
Appendix 5-1-4 (17)	Hydro Potential Map of New Georgia (17)	A5-63
Appendix 5-1-4 (18)	Hydro Potential Map of New Georgia (18)	A5-64
Appendix 5-1-5	Hydro Potential Map of San Cristobal	A5-65
Appendix 5-1-5 (1)	Hydro Potential Map of San Cristobal (1)	A5-66
Appendix 5-1-5 (2)	Hydro Potential Map of San Cristobal (2)	A5-67
Appendix 5-1-5 (3)	Hydro Potential Map of San Cristobal (3)	A5-68
Appendix 5-1-5 (4)	Hydro Potential Map of San Cristobal (4)	A5-69
Appendix 5-1-5 (5)	Hydro Potential Map of San Cristobal (5)	A5-70
Appendix 5-1-5 (6)	Hydro Potential Map of San Cristobal (6)	A5-71
Appendix 5-1-5 (7)	Hydro Potential Map of San Cristobal (7)	A5-72
Appendix 5-1-5 (8)	Hydro Potential Map of San Cristobal (8)	A5-73
Appendix 5-1-6	Hydro Potential Map of Choiseul	A5-74
Appendix 5-1-6 (1)	Hydro Potential Map of Choiseul (1)	A5-75
Appendix 5-1-6 (2)	Hydro Potential Map of Choiseul (2)	A5-76
Appendix 5-1-6 (3)	Hydro Potential Map of Choiseul (3)	A5-77
Appendix 5-1-6 (4)	Hydro Potential Map of Choiseul (4)	A5-78
Appendix 5-1-6 (5)	Hydro Potential Map of Choiseul (5)	A5-79
Appendix 5-1-6 (6)	Hydro Potential Map of Choiseul (6)	A5-80
Appendix 5-1-6 (7)	Hydro Potential Map of Choiseul (7)	A5-81
Appendix 5-1-6 (8)	Hydro Potential Map of Choiseul (8)	A5-82
Appendix 5-1-6 (9)	Hydro Potential Map of Choiseul (9)	A5-83
Appendix 5-1-6 (10)	Hydro Potential Map of Choiseul (10)	A5-84
Appendix 5-1-7	Hydro Potential Map of Santa Cruz Islands	A5-85
Appendix 5-1-7 (1)	Hydro Potential Map of Santa Cruz Islands (1)	A5-86
Appendix 5-1-7 (2)	Hydro Potential Map of Santa Cruz Islands (2)	A5-87
Appendix 5-2	Summary of Project Cost Estimate	A5-88

List of Appendix (3)

No.	Title	Page
Chapter 5		
Appendix 5-3-1	Reference for Kware'a Flood Discharge	A5-89
Appendix 5-3-2	Sedimentation Analysis for Kware'a	A5-90
Appendix 5-3-3	Water Level and Storage Curve for Kware'a	A5-91
Appendix 5-4	Study of Poporo Hydropower	A5-92
Chapter 6		
Appendix 6-4-1	Price list	A6-1
Appendix 6-6-1	Monthly maximum mean temperature	A6-3
Appendix 6-6-2	Monthly mean temperature	A6-4
Appendix 6-6-3	Monthly minimum mean temperature	A6-5
Appendix 6-6-4	Monthly maximum wind gust	A6-6
Appendix 6-6-5	Geographical distribution of earthquakes in Solomon Islands	A6-7
Appendix 6-6-6	Earthquakes greater than magnitude 5.6	A6-8
Chapter 7		
Appendix 7-5-1	Location of the Investigated Village	A7-1
Appendix 7-5-2(1)	Result of the Second Site Survey	A7-8
Appendix 7-5-2(2)	Result of the Second Site Survey	A7-11
Appendix 7-7-1	Sunshine duration & solar irradiation at Vavaya Ridge Upper Air Observatory in Guadalcanal Island	A7-14
Appendix 7-8-1	Calculation of PV and battery capacity in Honiara	A7-18
Appendix 7-8-2	Calculation of PV and battery capacity in Munda	A7-21
Appendix 7-8-3	Calculation of PV and battery capacity in Taro	A7-24
Appendix 7-8-4	Calculation of PV and battery capacity in Lata	A7-27
Appendix 7-8-5	Calculation of available demand on PV panel, available consecutive non-sunshine day & its recovery day on battery in Honiara	A7-30
Appendix 7-8-6	Calculation of available demand on PV panel, available consecutive non-sunshine day & its recovery day on battery in Munda	A7-31
Appendix 7-8-7	Calculation of available demand on PV panel, available consecutive non-sunshine day & its recovery day on battery in Taro	A7-32
Appendix 7-8-8	Calculation of available demand on PV panel, available consecutive non-sunshine day & its recovery day on battery in Lata	A7-33
Appendix 7-8-9	Available demand on PV panel, available consecutive non-sunshine day and recovery day on battery in Honiara	A7-34
Appendix 7-8-10	Available demand on PV panel, available consecutive non-sunshine day and recovery day on battery in Munda	A7-37
Appendix 7-8-11	Available demand on PV panel, available consecutive non-sunshine day and recovery day on battery in Taro	A7-40
Appendix 7-8-12	Available demand on PV panel, available consecutive non-sunshine day and recovery day on battery in Lata	A7-43
Appendix 7-10-1(1)	Expenses for the SHS (36Wp: with tax and others)	A7-46
Appendix 7-10-1(2)	Expenses for the SHS (36Wp: without tax and duty)	A7-46
Appendix 7-10-2(1)	Expenses for the SHS (55Wp: with tax and others)	A7-47
Appendix 7-10-2(2)	Expenses for the SHS (55Wp: without tax and duty)	A7-47
Appendix 7-10-3(1)	Expenses for the SHS (75Wp: with tax and others)	A7-48
Appendix 7-10-3(2)	Expenses for the SHS (75Wp: without tax and duty)	A7-48
Appendix 7-11-1(1)	Calculation of annual expenses for the SHS (36Wp: with tax and others)	A7-49
Appendix 7-11-1(2)	Calculation of annual expenses for the SHS (36Wp: without tax and duty)	A7-49

List of Appendix (4)

No.	Title	Page
Chapter 7		
Appendix 7-11-2(1)	Calculation of annual expenses for the SHS (55Wp: with tax and others)	A7-50
Appendix 7-11-2(2)	Calculation of annual expenses for the SHS (55Wp: without tax and duty)	A7-50
Appendix 7-11-3(1)	Calculation of annual expenses for the SHS (75Wp: with tax and others)	A7-51
Appendix 7-11-3(2)	Calculation of annual expenses for the SHS (75Wp: without tax and duty)	A7-51
Chapter 10		
Appendix 10-3-1	Area served by the future powerstation (Guadalcanal)	A10-1
Appendix 10-3-2	Area served by the future powerstation (Auki, Malu'u)	A10-2
Appendix 10-3-3	Area served by the future powerstation (Buala)	A10-3
Appendix 10-3-4	Area served by the future powerstation (Kirakira)	A10-4
Appendix 10-3-5	Area served by the future powerstation (Lata)	A10-5
Appendix 10-3-6	Area served by the future powerstation (Gizo, Munda-Noro)	A10-6
Appendix 10-3-11	Power demand and power supply development (Honiara-Lungga) Plan-1	A10-7
Appendix 10-3-12	Power demand and power supply development (Honiara-Lungga) Plan-2	A10-8
Appendix 10-3-13	Power demand and power supply development (Honiara-Lungga) Plan-3	A10-9
Appendix 10-3-14	Power demand and power supply development (Honiara-Lungga) Plan-4	A10-10
Appendix 10-3-21	Power demand and power supply development (Auki-Malu'u-Bina) Plan-1	A10-11
Appendix 10-3-22	Power demand and power supply development (Auki-Malu'u-Bina) Plan-2	A10-12
Appendix 10-3-23	Power demand and power supply development (Auki-Malu'u-Bina) Plan-3	A10-13
Appendix 10-3-24	Power demand and power supply development (Auki-Malu'u-Bina) Plan-4	A10-14
Appendix 10-3-25	Power demand and power supply development (Auki-Malu'u-Bina) Plan-5	A10-15
Appendix 10-3-26	Power demand and power supply development (Auki-Malu'u-Bina) Plan-6	A10-16
Appendix 10-3-31	Power demand and power supply development (Buala) Plan-1	A10-17
Appendix 10-3-32	Power demand and power supply development (Buala) Plan-2	A10-18
Appendix 10-3-41	Power demand and power supply development (Kirakira) Plan-1	A10-19
Appendix 10-3-42	Power demand and power supply development (Kirakira) Plan-2	A10-20
Appendix 10-3-43	Power demand and power supply development (Kirakira) Plan-3	A10-21
Appendix 10-3-51	Power demand and power supply development (Lata) Plan-1	A10-22
Appendix 10-3-52	Power demand and power supply development (Lata) Plan-2	A10-23
Appendix 10-3-61	Power demand and power supply development (Choiseul) Plan-1	A10-24
Appendix 10-3-62	Power demand and power supply development (Choiseul) Plan-2	A10-25
Appendix 10-3-71	Power demand and power supply development (Gizo) Plan-1	A10-26
Appendix 10-3-72	Power demand and power supply development (Gizo) Plan-2	A10-27
Appendix 10-3-73	Power demand and power supply development (Gizo) Plan-3	A10-28
Appendix 10-3-74	Power demand and power supply development (Noro-Munda) Plan-1	A10-29
Appendix 10-3-75	Power demand and power supply development (Noro-Munda) Plan-2	A10-30
Appendix 10-3-81	Power demand and power supply development (Tulagi) Plan-1	A10-31
Appendix 10-3-82	Power demand and power supply development (Tulagi) Plan-2	A10-32
Appendix 10-3-91	Power demand and power supply development (Rennell and Bellona) Plan-1	A10-33
Appendix 10-3-92	Power demand and power supply development (Rennell and Bellona) Plan-2	A10-34

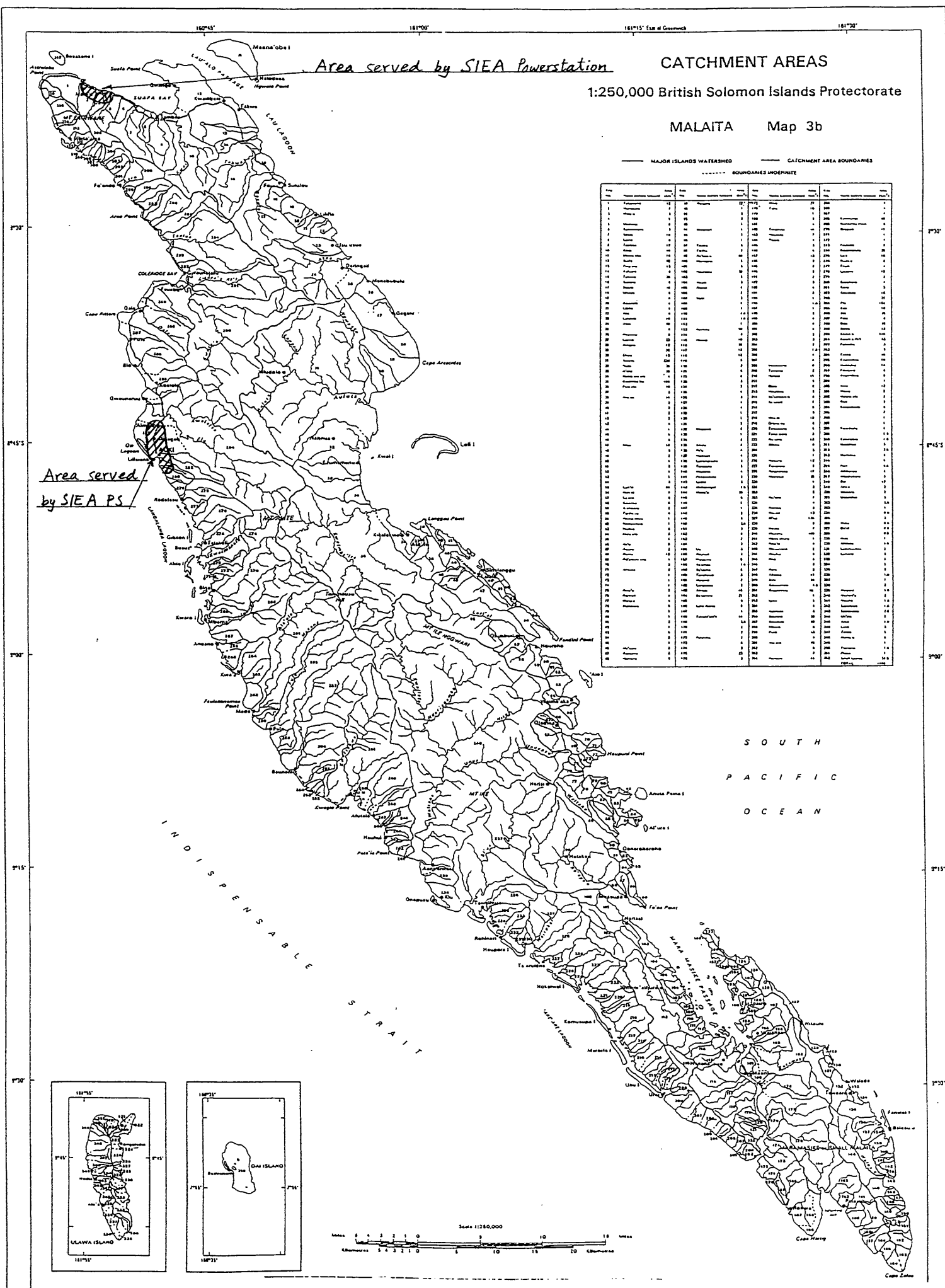
List of Appendix (5)

No.	Title	Page
Chapter 12		
Appendix 12-1-1	LRAIC and LRMC for the master plan	A12-1
Appendix 12-1-2	Honiara-Lungga grid plan 1-4	A12-2
Appendix 12-1-3	Auki-Malu'u grid plan 1-6	A12-3
Appendix 12-1-4	Buala plan 1-2	A12-4
Appendix 12-1-5	Kirakira plan 1-3	A12-5
Appendix 12-1-6	Lata plan 1-2	A12-6
Appendix 12-1-7	Taro-Choiseul plan 1-2	A12-7
Appendix 12-1-8	Gizo plan 1-3	A12-8
Appendix 12-1-9	Noro-Munda plan 1-2	A12-9
Appendix 12-1-10	Tulagi plan 1-2	A12-10
Appendix 12-1-11	Rennell plan 1-2	A12-11
Appendix 12-2-7 (1)	Calculation of IRR (1)	A12-12
Appendix 12-2-7 (2)	Calculation of IRR (2)	A12-13
Appendix 12-2-7 (3)	Calculation of IRR (3)	A12-14
Appendix 12-2-7 (4)	Calculation of IRR (4)	A12-15
Appendix 12-2-7 (5)	Calculation of IRR (5)	A12-16
Appendix 12-2-7 (6)	Calculation of IRR (6)	A12-17
Appendix 12-2-7 (7)	Calculation of IRR (7)	A12-18
Appendix 12-2-7 (8)	Calculation of IRR (8)	A12-19
Appendix 12-2-7 (9)	Calculation of IRR (9)	A12-20
Appendix 12-2-7 (10)	Calculation of IRR (10)	A12-21
Appendix 12-2-7 (11)	Calculation of IRR (11)	A12-22

CHAPTER 4

POWER DEMAND

Appendix 4-2-1 Area served by the existing SIEA's powerstation (Guadalcanal)



CATCHMENT AREAS
1:250,000 Solomon Islands
SANTA ISABEL Map 5b

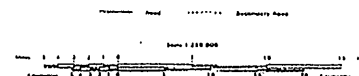
MAJOR ISLANDS HATCHED
CATCHMENT AREA BOUNDARIES
..... INTERMEDIATE BOUNDARIES

S O U T H P A C I F I C O C E A N

N E W G E O R G I A S O U N D

Area served by SIEA Powerstation

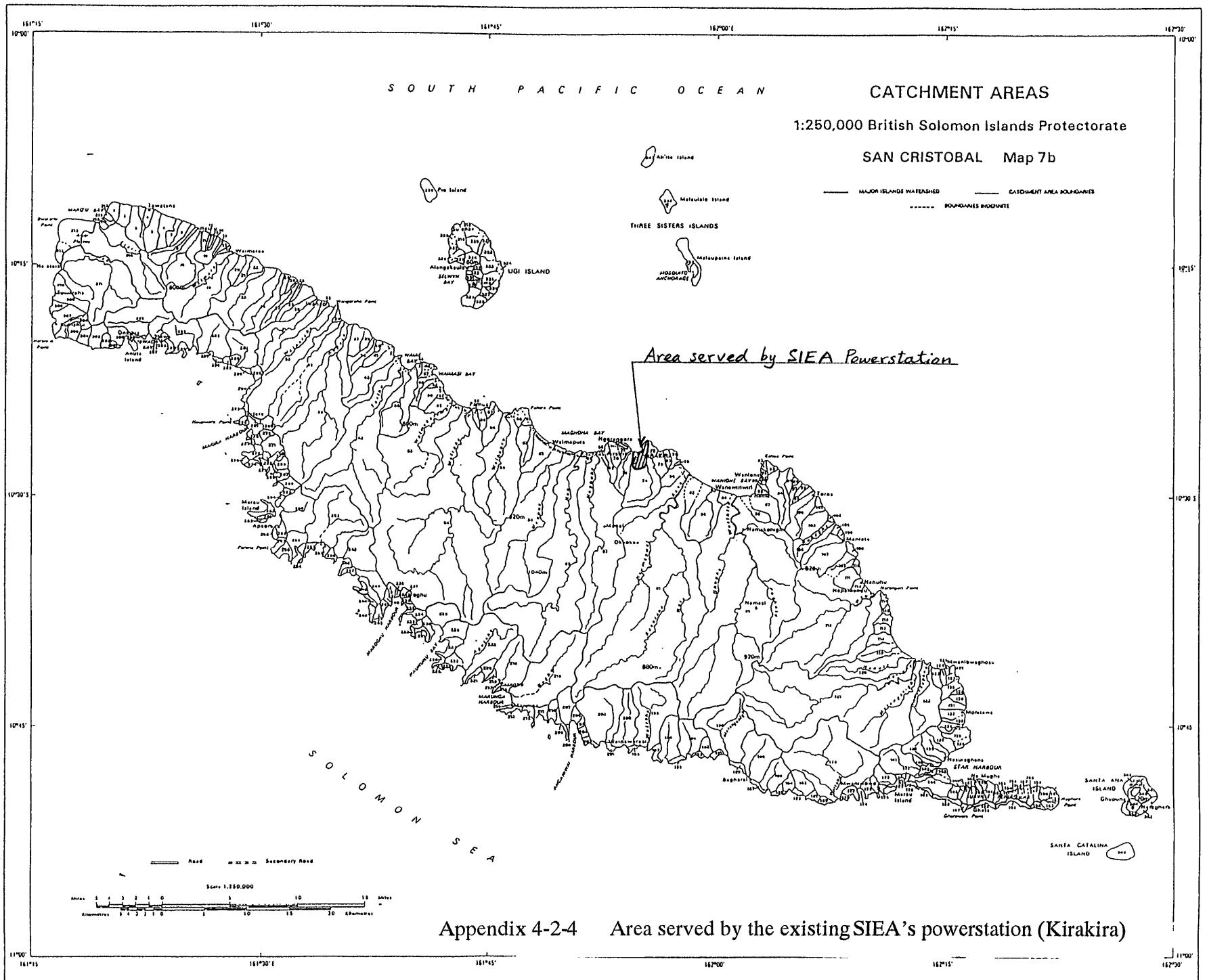
SAN JORGE ISLAND

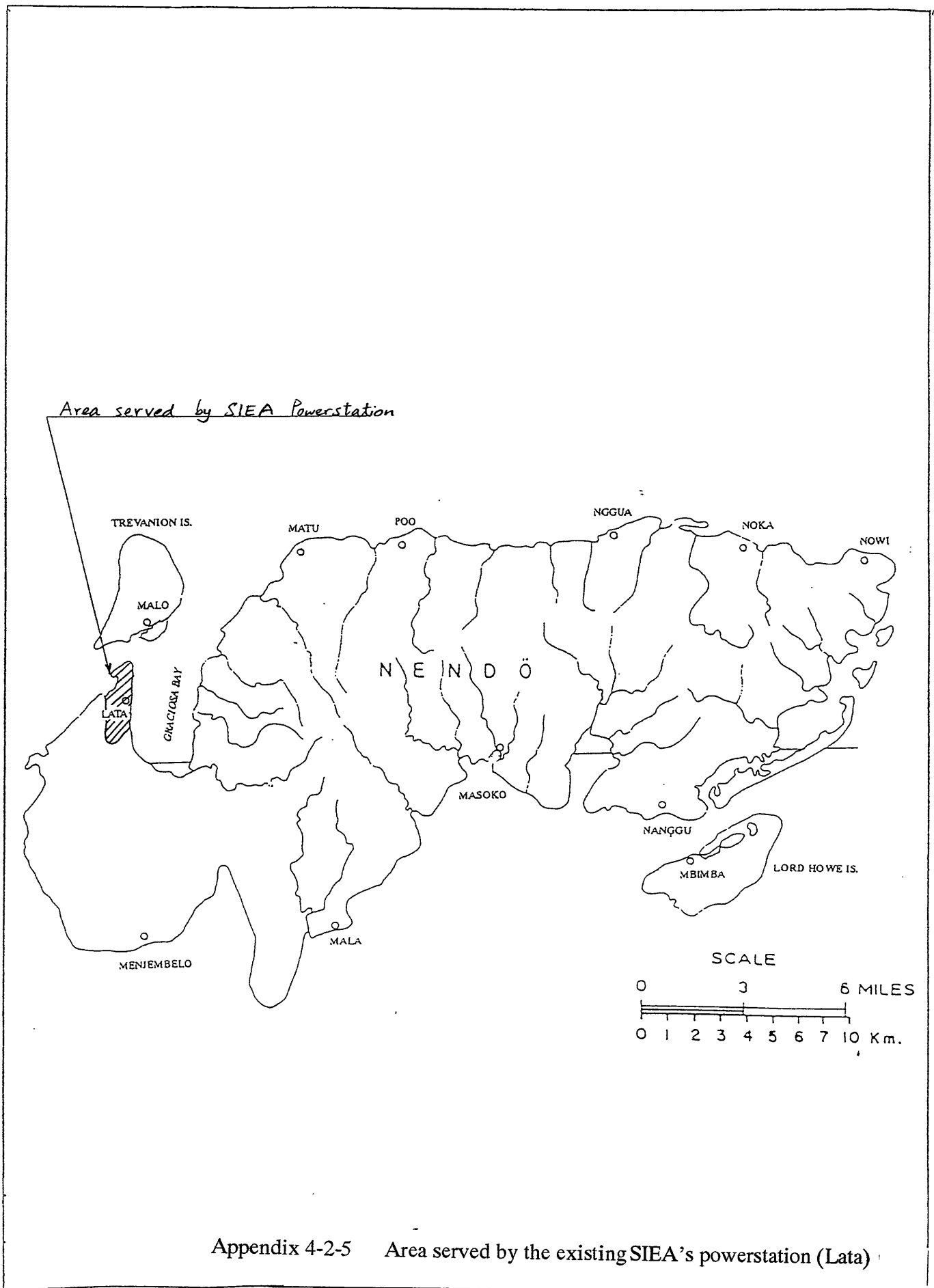


Prepared by Directorate of Statistics, Bureau, 1976. Printed by B.S.S. for the Directorate.
Based on information from C.A.M.B. Series 2711 (B.S.S. 1976, 1978).
Map showing boundaries of the 14 Land Divisions of the Eastern Islands, Western Islands, and
Land Divisions, Bureau of Statistics, Directorate of Statistics, Bureau, 1976.
Published by the Bureau Government of the Eastern Islands, Land Division, Bureau.
B.S.S. 2071

Appendix 4-2-3

Area served by the existing SIEA's powerstation (Buala)

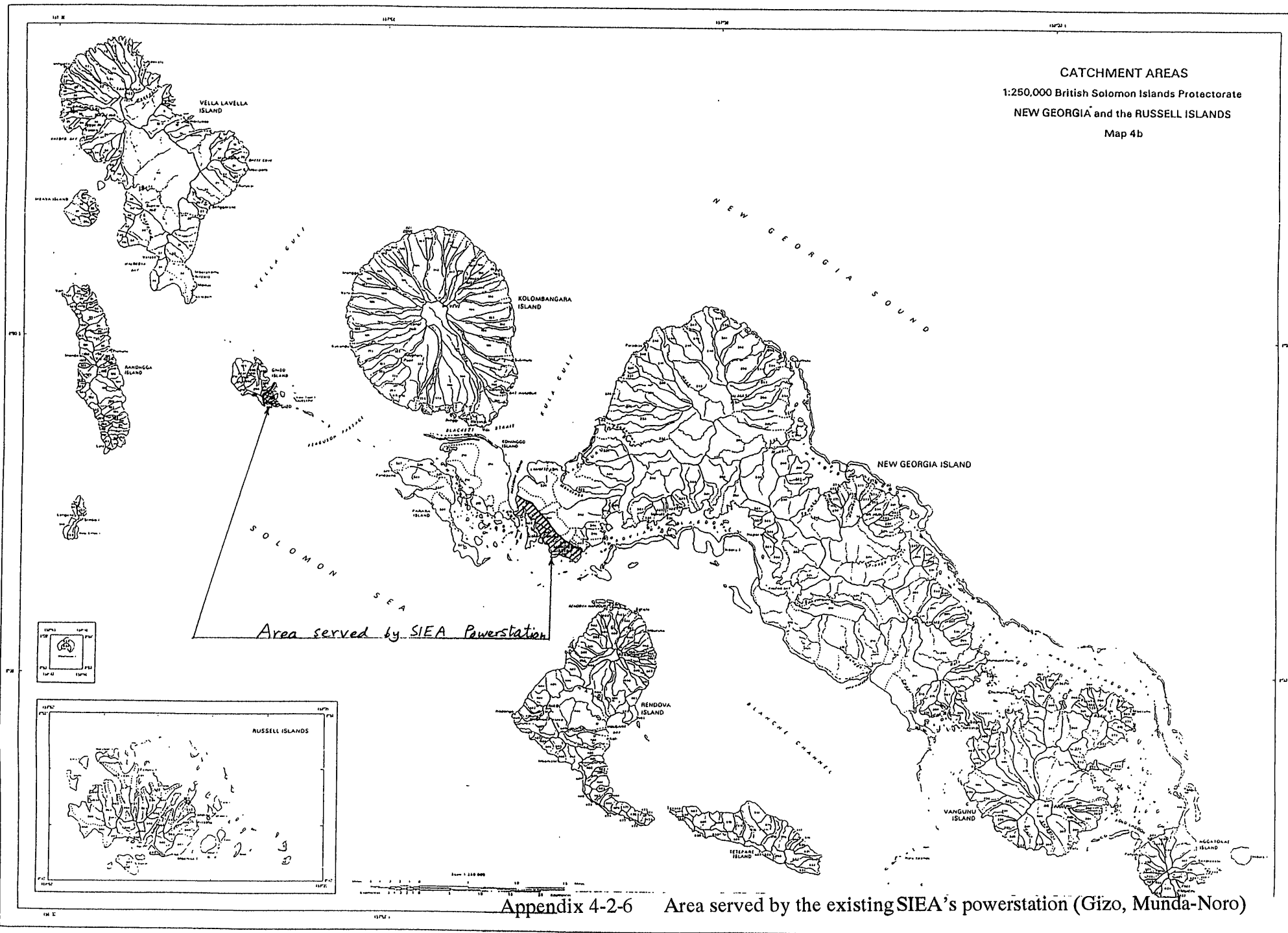




CHAPTER 5

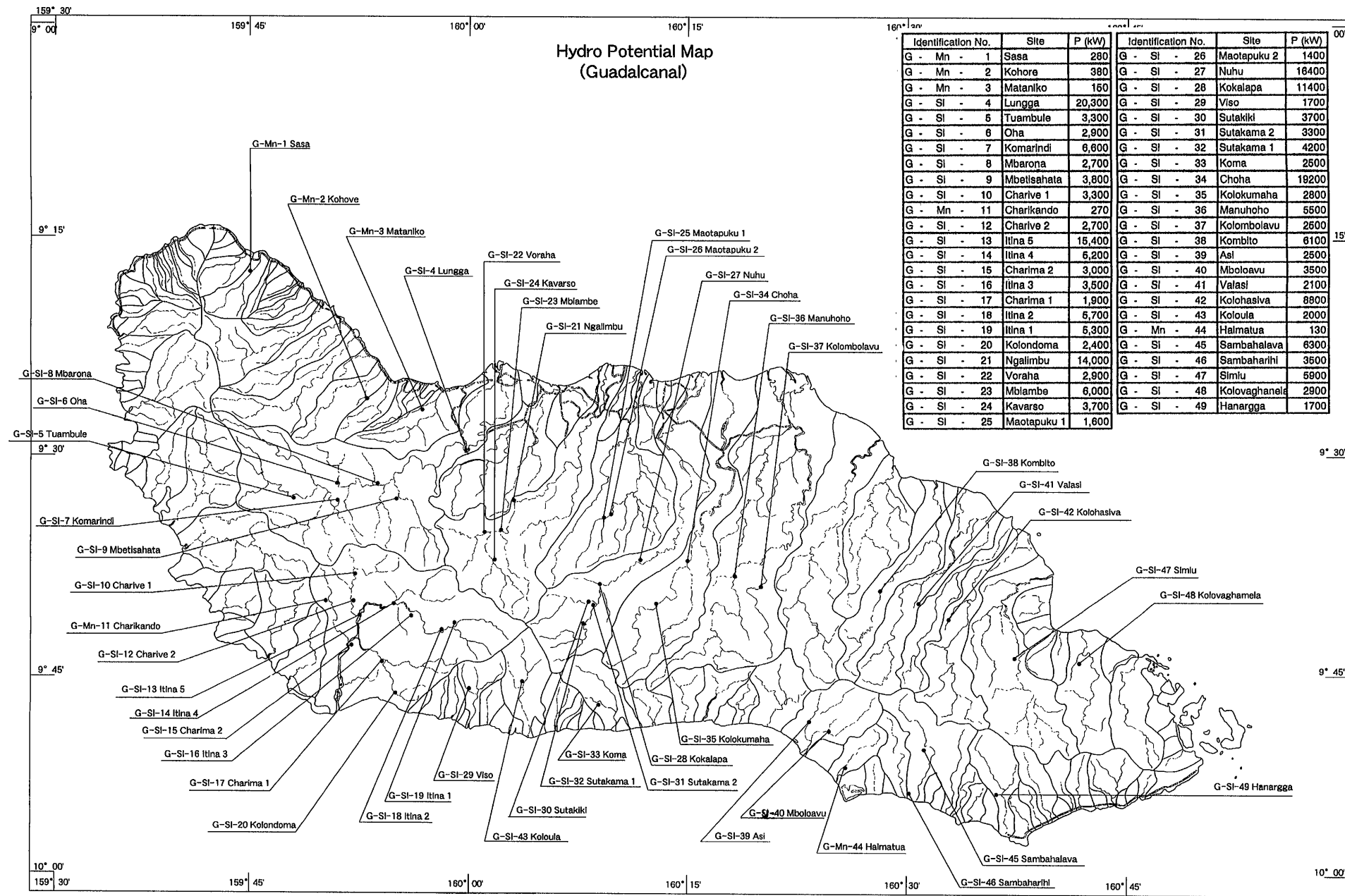
SMALL HYDROPOWER
GENERATION

CATCHMENT AREAS
1:250,000 British Solomon Islands Protectorate
NEW GEORGIA and the RUSSELL ISLANDS
Map 4b



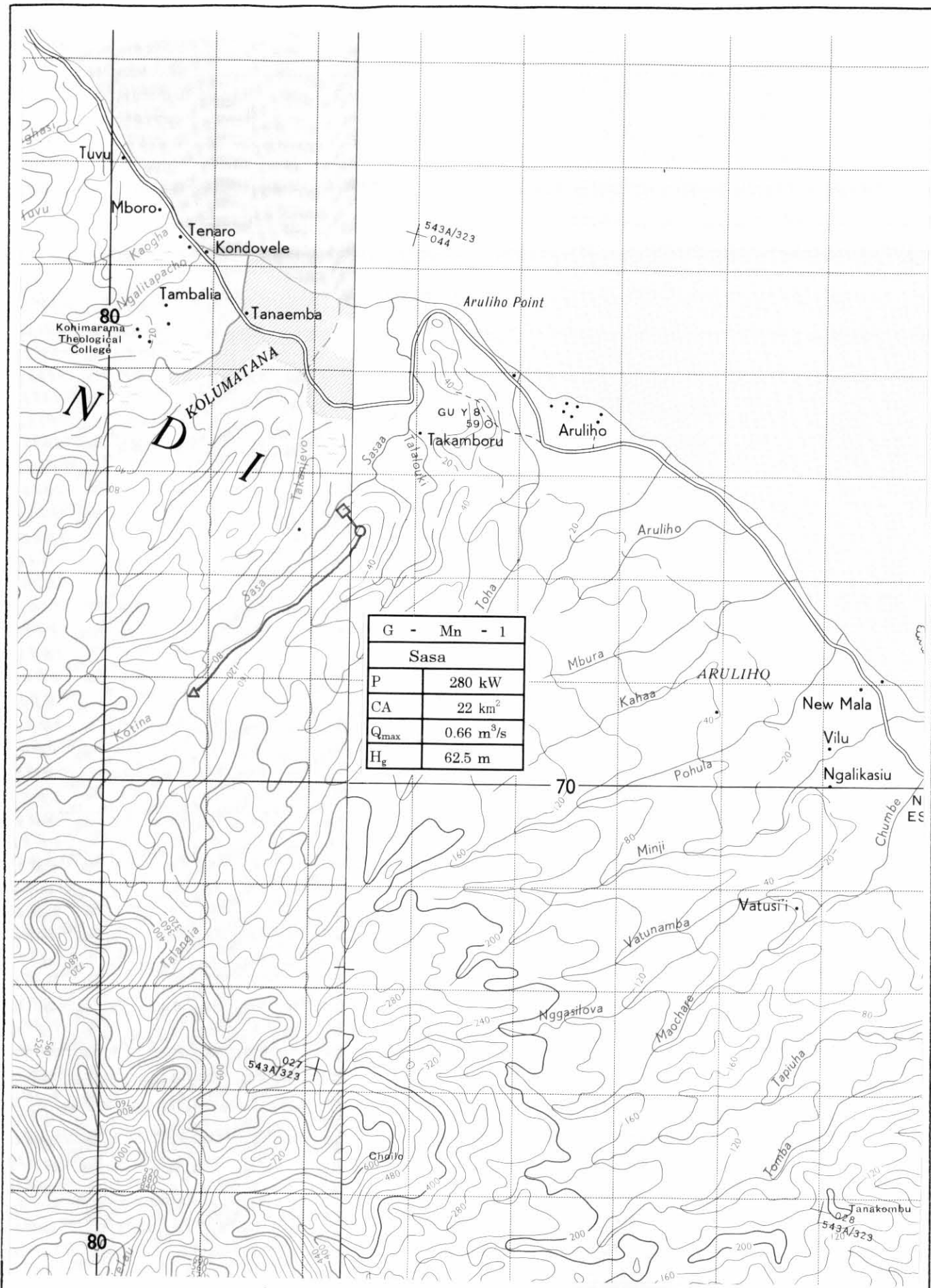
Appendix 4-2-6 Area served by the existing SIEA's powerstation (Gizo, Munda-Noro)

AS-111



Identification No.	Site	P (kW)	Identification No.	Site	P (kW)
G - Mn - 1	Sasa	280	G - SI - 26	Maotapuku 2	1400
G - Mn - 2	Kohore	380	G - SI - 27	Nuhu	16400
G - Mn - 3	Mataniko	160	G - SI - 28	Kokalapa	11400
G - SI - 4	Lungga	20,300	G - SI - 29	Viso	1700
G - SI - 5	Tuambule	3,300	G - SI - 30	Sutakiki	3700
G - SI - 6	Oha	2,900	G - SI - 31	Sutakama 2	3300
G - SI - 7	Komarindi	6,600	G - SI - 32	Sutakama 1	4200
G - SI - 8	Mbarona	2,700	G - SI - 33	Koma	2500
G - SI - 9	Mbetisahata	3,800	G - SI - 34	Choha	19200
G - SI - 10	Charive 1	3,300	G - SI - 35	Kolokumaha	2800
G - Mn - 11	Charikando	270	G - SI - 36	Manuhoho	5500
G - SI - 12	Charive 2	2,700	G - SI - 37	Kolombolavu	2500
G - SI - 13	Itina 5	15,400	G - SI - 38	Kombito	6100
G - SI - 14	Itina 4	6,200	G - SI - 39	Asi	2500
G - SI - 15	Charima 2	3,000	G - SI - 40	Mboloavu	3500
G - SI - 16	Itina 3	3,500	G - SI - 41	Valasi	2100
G - SI - 17	Charima 1	1,900	G - SI - 42	Kolohasiva	8800
G - SI - 18	Itina 2	5,700	G - SI - 43	Koloula	2000
G - SI - 19	Itina 1	5,300	G - Mn - 44	Halmatua	130
G - SI - 20	Kolondoma	2,400	G - SI - 45	Sambahalava	6300
G - SI - 21	Ngalimbu	14,000	G - SI - 46	Sambaharhi	3500
G - SI - 22	Voraha	2,900	G - SI - 47	Simlu	5900
G - SI - 23	Mblambe	6,000	G - SI - 48	Kolovaghanela	2900
G - SI - 24	Kavarso	3,700	G - SI - 49	Hanargga	1700
G - SI - 25	Maotapuku 1	1,600			

Appendix 5-1-1 Hydro Potential Map of Guadalcanal



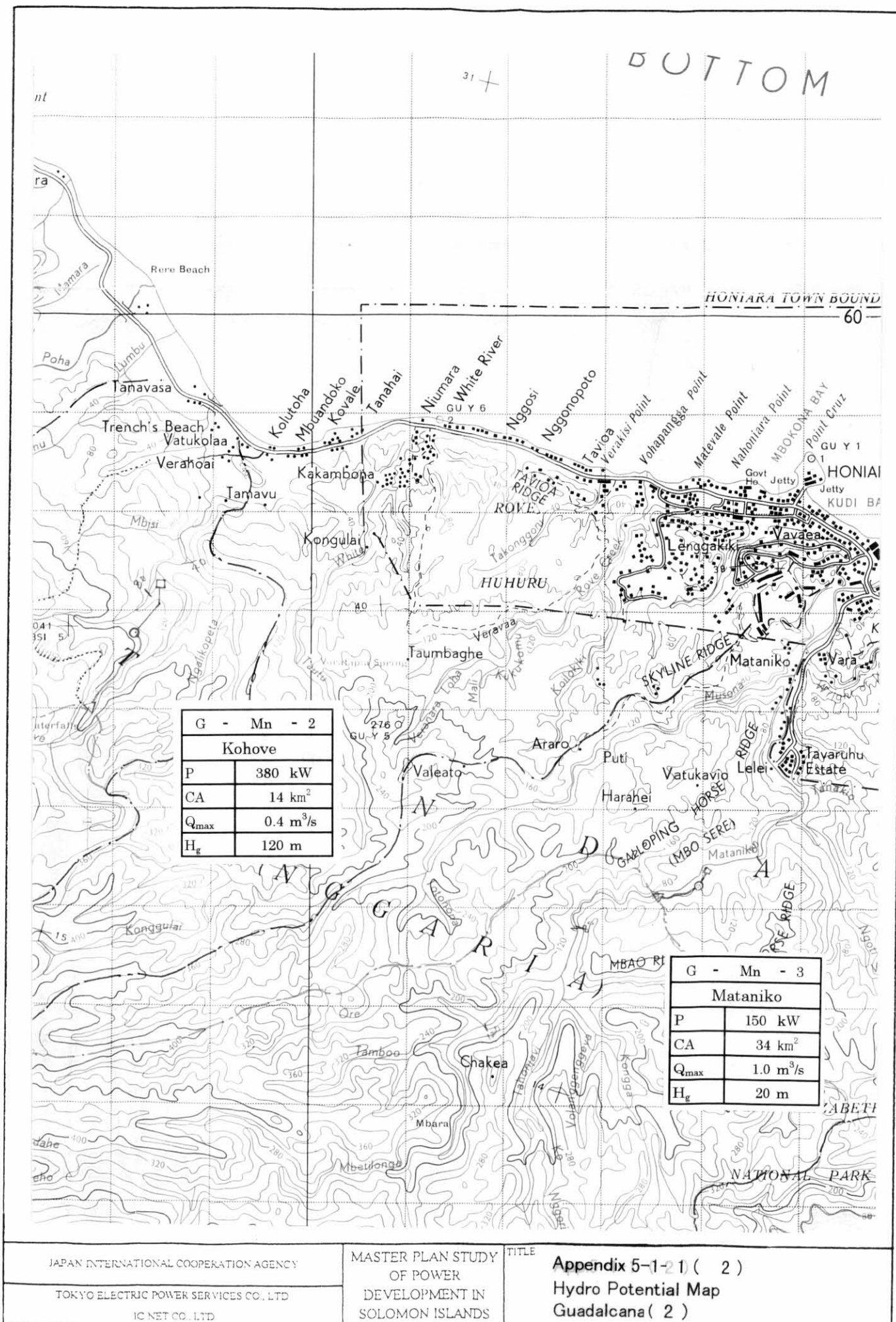
JAPAN INTERNATIONAL COOPERATION AGENCY

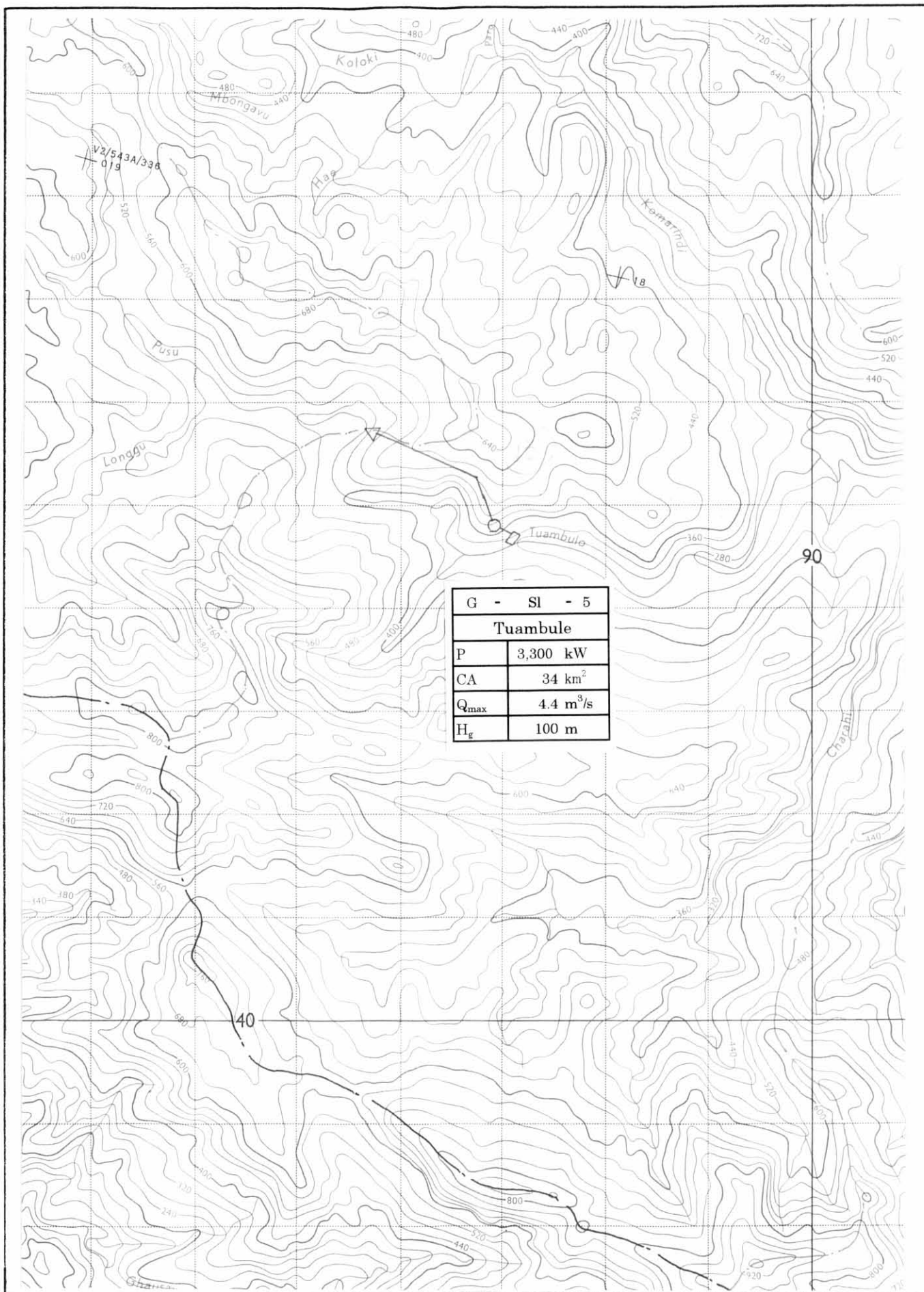
TOKYO ELECTRIC POWER SERVICES CO., LTD
IC NET CO., LTD

MASTER PLAN STUDY
OF POWER
DEVELOPMENT IN
SOLOMON ISLANDS

TITLE

Appendix 5-1- 1 (1)
Hydro Potential Map
Guadalcanara (1)





JAPAN INTERNATIONAL COOPERATION AGENCY

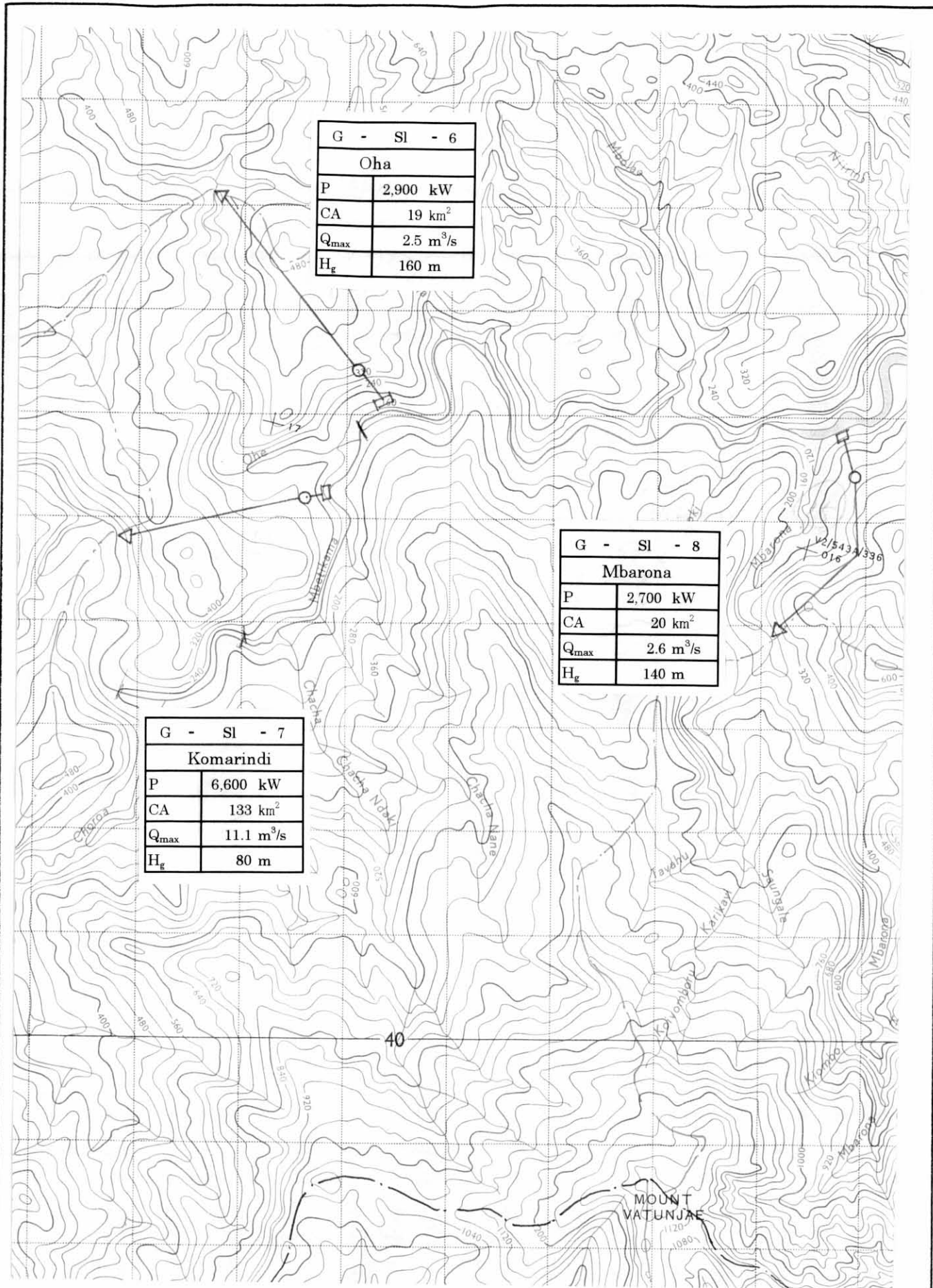
TOKYO ELECTRIC POWER SERVICES CO., LTD

IC NET CO., LTD

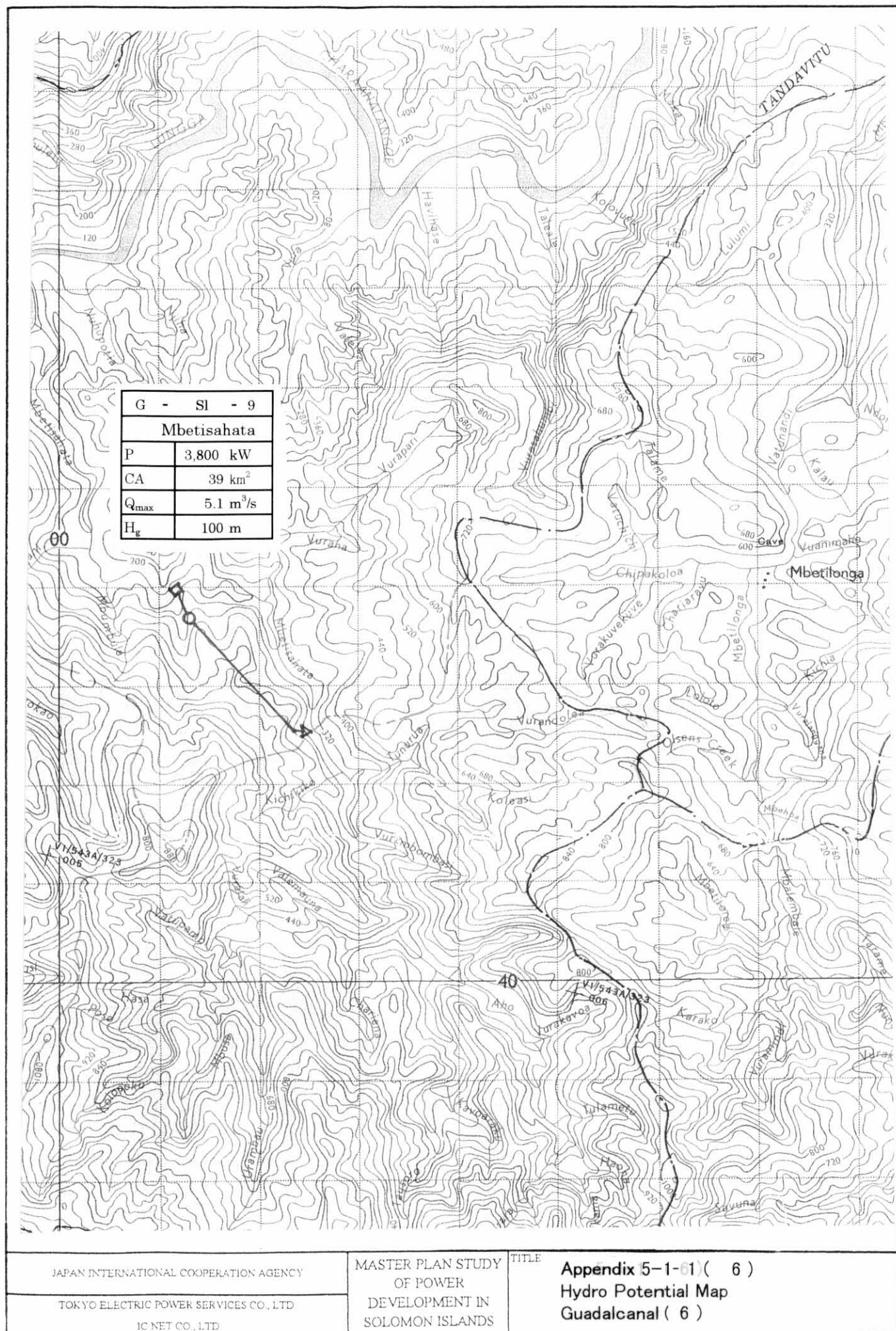
MASTER PLAN STUDY
OF POWER
DEVELOPMENT IN
SOLOMON ISLANDS

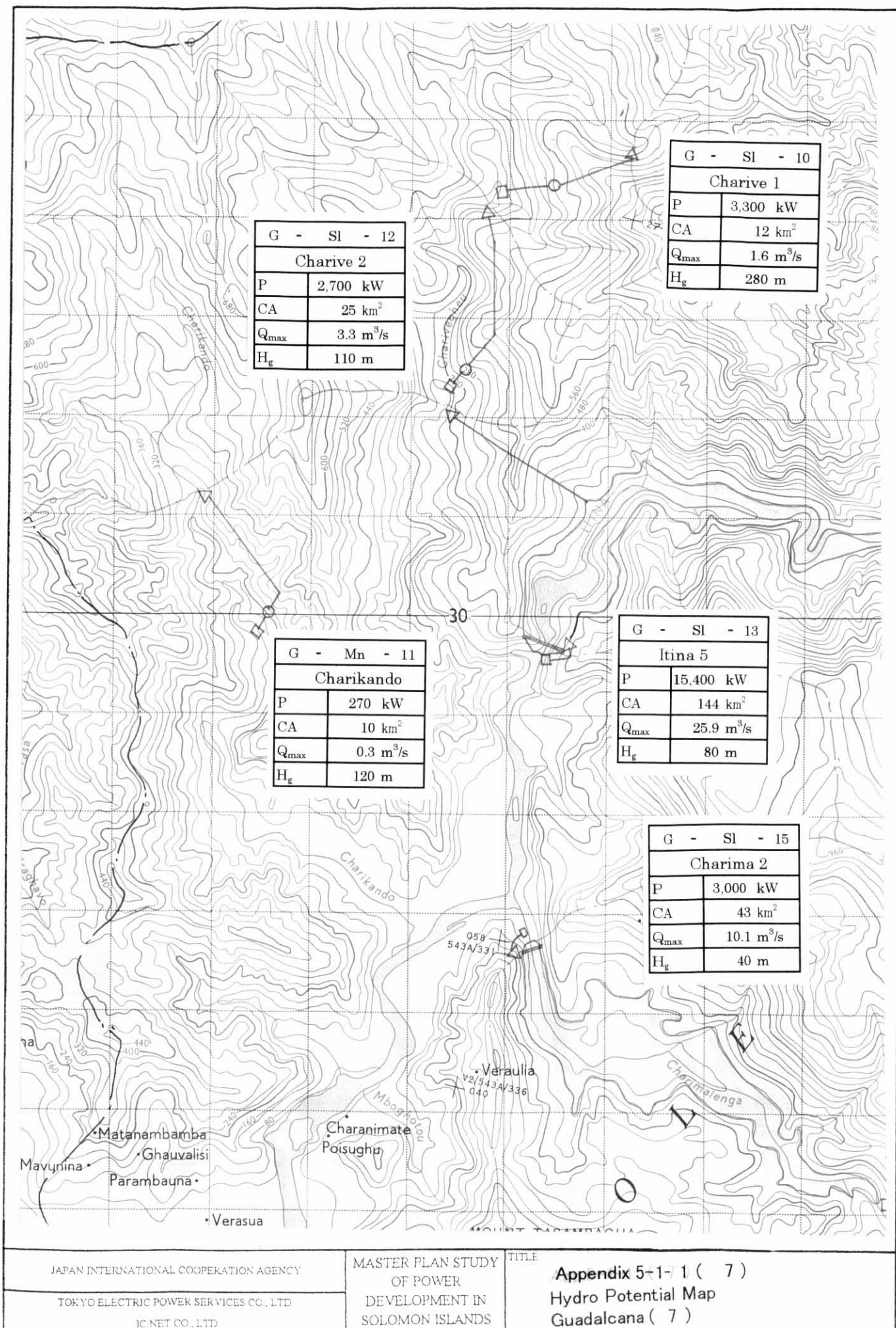
TITLE

Appendix 5-1-41 (4)
Hydro Potential Map
Guadalcanara (4)



JAPAN INTERNATIONAL COOPERATION AGENCY	MASTER PLAN STUDY OF POWER DEVELOPMENT IN SOLOMON ISLANDS	TITLE Appendix 5-1- 1 (5) Hydro Potential Map Guadalcanara (5)
TOKYO ELECTRIC POWER SERVICES CO., LTD		
IC NET CO., LTD		





JAPAN INTERNATIONAL COOPERATION AGENCY

TOKYO ELECTRIC POWER SERVICES CO., LTD

IC NET CO., LTD

 MASTER PLAN STUDY
 OF POWER
 DEVELOPMENT IN
 SOLOMON ISLANDS

TITLE

 Appendix 5-1-1 (7)
 Hydro Potential Map
 Guadalcanara (7)