

国際協力事業団

ソロモン諸島国
天然資源省
ソロモン電力庁

ソロモン諸島国

長期電力開発マスタープラン調査

ファイナルレポート
第 巻
付属資料

平成13年1月

東電設計株式会社
アイシーネット株式会社

付属資料目次 (1)

番号	タイトル	頁
第4章		
Appendix 4-2-1	Area served by the existing SIEA's powerstation (Guadalcanal)	A 4-1
Appendix 4-2-2	Area served by the existing SIEA's powerstation (Auki, Malu'u)	A 4-2
Appendix 4-2-3	Area served by the existing SIEA's powerstation (Buala)	A 4-3
Appendix 4-2-4	Area served by the existing SIEA's powerstation (Kirakira)	A 4-4
Appendix 4-2-5	Area served by the existing SIEA's powerstation (Lata)	A 4-5
Appendix 4-2-6	Area served by the existing SIEA's powerstation (Gizo, Noro-Munda)	A 4-6
第5章		
Appendix 5-1-1	Hydro Potential Map of Guadalcanal	A5-1
Appendix 5-1-1 (1)	Hydro Potential Map of Guadalcanal (1)	A5-2
Appendix 5-1-1 (2)	Hydro Potential Map of Guadalcanal (2)	A5-3
Appendix 5-1-1 (3)	Hydro Potential Map of Guadalcanal (3)	A5-4
Appendix 5-1-1 (4)	Hydro Potential Map of Guadalcanal (4)	A5-5
Appendix 5-1-1 (5)	Hydro Potential Map of Guadalcanal (5)	A5-6
Appendix 5-1-1 (6)	Hydro Potential Map of Guadalcanal (6)	A5-7
Appendix 5-1-1 (7)	Hydro Potential Map of Guadalcanal (7)	A5-8
Appendix 5-1-1 (8)	Hydro Potential Map of Guadalcanal (8)	A5-9
Appendix 5-1-1 (9)	Hydro Potential Map of Guadalcanal (9)	A5-10
Appendix 5-1-1 (10)	Hydro Potential Map of Guadalcanal (10)	A5-11
Appendix 5-1-1 (11)	Hydro Potential Map of Guadalcanal (11)	A5-12
Appendix 5-1-1 (12)	Hydro Potential Map of Guadalcanal (12)	A5-13
Appendix 5-1-1 (13)	Hydro Potential Map of Guadalcanal (13)	A5-14
Appendix 5-1-1 (14)	Hydro Potential Map of Guadalcanal (14)	A5-15
Appendix 5-1-1 (15)	Hydro Potential Map of Guadalcanal (15)	A5-16
Appendix 5-1-1 (16)	Hydro Potential Map of Guadalcanal (16)	A5-17
Appendix 5-1-1 (17)	Hydro Potential Map of Guadalcanal (17)	A5-18
Appendix 5-1-1 (18)	Hydro Potential Map of Guadalcanal (18)	A5-19
Appendix 5-1-1 (19)	Hydro Potential Map of Guadalcanal (19)	A5-20
Appendix 5-1-1 (20)	Hydro Potential Map of Guadalcanal (20)	A5-21
Appendix 5-1-1 (21)	Hydro Potential Map of Guadalcanal (21)	A5-22
Appendix 5-1-1 (22)	Hydro Potential Map of Guadalcanal (22)	A5-23
Appendix 5-1-1 (23)	Hydro Potential Map of Guadalcanal (23)	A5-24
Appendix 5-1-1 (24)	Hydro Potential Map of Guadalcanal (24)	A5-25
Appendix 5-1-1 (25)	Hydro Potential Map of Guadalcanal (25)	A5-26
Appendix 5-1-1 (26)	Hydro Potential Map of Guadalcanal (26)	A5-27
Appendix 5-1-2	Hydro Potential Map of Malaita	A5-28
Appendix 5-1-2 (1)	Hydro Potential Map of Malaita (1)	A5-29
Appendix 5-1-2 (2)	Hydro Potential Map of Malaita (2)	A5-30
Appendix 5-1-2 (3)	Hydro Potential Map of Malaita (3)	A5-31
Appendix 5-1-2 (4)	Hydro Potential Map of Malaita (4)	A5-32
Appendix 5-1-2 (5)	Hydro Potential Map of Malaita (5)	A5-33
Appendix 5-1-2 (6)	Hydro Potential Map of Malaita (6)	A5-34
Appendix 5-1-2 (7)	Hydro Potential Map of Malaita (7)	A5-35
Appendix 5-1-2 (8)	Hydro Potential Map of Malaita (8)	A5-36
Appendix 5-1-2 (9)	Hydro Potential Map of Malaita (9)	A5-37
Appendix 5-1-2 (10)	Hydro Potential Map of Malaita (10)	A5-38
Appendix 5-1-2 (11)	Hydro Potential Map of Malaita (11)	A5-39
Appendix 5-1-2 (12)	Hydro Potential Map of Malaita (12)	A5-40

付属資料目次 (2)

番号	タイトル	頁
第5章		
Appendix 5-1-2 (13)	Hydro Potential Map of Malaita (13)	A5-41
Appendix 5-1-3	Hydro Potential Map of Santa Isabel	A5-42
Appendix 5-1-3 (1)	Hydro Potential Map of Santa Isabel (1)	A5-43
Appendix 5-1-3 (2)	Hydro Potential Map of Santa Isabel (2)	A5-44
Appendix 5-1-3 (3)	Hydro Potential Map of Santa Isabel (3)	A5-45
Appendix 5-1-4	Hydro Potential Map of New Georgia	A5-46
Appendix 5-1-4 (1)	Hydro Potential Map of New Georgia (1)	A5-47
Appendix 5-1-4 (2)	Hydro Potential Map of New Georgia (2)	A5-48
Appendix 5-1-4 (3)	Hydro Potential Map of New Georgia (3)	A5-49
Appendix 5-1-4 (4)	Hydro Potential Map of New Georgia (4)	A5-50
Appendix 5-1-4 (5)	Hydro Potential Map of New Georgia (5)	A5-51
Appendix 5-1-4 (6)	Hydro Potential Map of New Georgia (6)	A5-52
Appendix 5-1-4 (7)	Hydro Potential Map of New Georgia (7)	A5-53
Appendix 5-1-4 (8)	Hydro Potential Map of New Georgia (8)	A5-54
Appendix 5-1-4 (9)	Hydro Potential Map of New Georgia (9)	A5-55
Appendix 5-1-4 (10)	Hydro Potential Map of New Georgia (10)	A5-56
Appendix 5-1-4 (11)	Hydro Potential Map of New Georgia (11)	A5-57
Appendix 5-1-4 (12)	Hydro Potential Map of New Georgia (12)	A5-58
Appendix 5-1-4 (13)	Hydro Potential Map of New Georgia (13)	A5-59
Appendix 5-1-4 (14)	Hydro Potential Map of New Georgia (14)	A5-60
Appendix 5-1-4 (15)	Hydro Potential Map of New Georgia (15)	A5-61
Appendix 5-1-4 (16)	Hydro Potential Map of New Georgia (16)	A5-62
Appendix 5-1-4 (17)	Hydro Potential Map of New Georgia (17)	A5-63
Appendix 5-1-4 (18)	Hydro Potential Map of New Georgia (18)	A5-64
Appendix 5-1-5	Hydro Potential Map of San Cristobal	A5-65
Appendix 5-1-5 (1)	Hydro Potential Map of San Cristobal (1)	A5-66
Appendix 5-1-5 (2)	Hydro Potential Map of San Cristobal (2)	A5-67
Appendix 5-1-5 (3)	Hydro Potential Map of San Cristobal (3)	A5-68
Appendix 5-1-5 (4)	Hydro Potential Map of San Cristobal (4)	A5-69
Appendix 5-1-5 (5)	Hydro Potential Map of San Cristobal (5)	A5-70
Appendix 5-1-5 (6)	Hydro Potential Map of San Cristobal (6)	A5-71
Appendix 5-1-5 (7)	Hydro Potential Map of San Cristobal (7)	A5-72
Appendix 5-1-5 (8)	Hydro Potential Map of San Cristobal (8)	A5-73
Appendix 5-1-6	Hydro Potential Map of Choiseul	A5-74
Appendix 5-1-6 (1)	Hydro Potential Map of Choiseul (1)	A5-75
Appendix 5-1-6 (2)	Hydro Potential Map of Choiseul (2)	A5-76
Appendix 5-1-6 (3)	Hydro Potential Map of Choiseul (3)	A5-77
Appendix 5-1-6 (4)	Hydro Potential Map of Choiseul (4)	A5-78
Appendix 5-1-6 (5)	Hydro Potential Map of Choiseul (5)	A5-79
Appendix 5-1-6 (6)	Hydro Potential Map of Choiseul (6)	A5-80
Appendix 5-1-6 (7)	Hydro Potential Map of Choiseul (7)	A5-81
Appendix 5-1-6 (8)	Hydro Potential Map of Choiseul (8)	A5-82
Appendix 5-1-6 (9)	Hydro Potential Map of Choiseul (9)	A5-83
Appendix 5-1-6 (10)	Hydro Potential Map of Choiseul (10)	A5-84
Appendix 5-1-7	Hydro Potential Map of Santa Cruz Islands	A5-85
Appendix 5-1-7 (1)	Hydro Potential Map of Santa Cruz Islands (1)	A5-86
Appendix 5-1-7 (2)	Hydro Potential Map of Santa Cruz Islands (2)	A5-87
Appendix 5-2	Summary of Project Cost Estimate	A5-88

付属資料目次 (3)

番号	タイトル	頁
第5章		
Appendix 5-3-1	Reference for Kware'a Flood Discharge	A5-89
Appendix 5-3-2	Sedimentation Analysis for Kware'a	A5-90
Appendix 5-3-3	Water Level and Storage Curve for Kware'a	A5-91
Appendix 5-4	Study of Poporo Hydropower	A5-92
第6章		
Appendix 6-4-1	Price list	A6-1
Appendix 6-6-1	Monthly maximum mean temperature	A6-3
Appendix 6-6-2	Monthly mean temperature	A6-4
Appendix 6-6-3	Monthly minimum mean temperature	A6-5
Appendix 6-6-4	Monthly maximum wind gust	A6-6
Appendix 6-6-5	Geographical distribution of earthquakes in Solomon Islands	A6-7
Appendix 6-6-6	Earthquakes greater than magnitude5.6	A6-8
第7章		
Appendix 7-5-1	Location of the Investigated Village	A7-1
Appendix 7-5-2(1)	Result of the Second Site Survey	A7-8
Appendix 7-5-2(2)	Result of the Second Site Survey	A7-11
Appendix 7-7-1	Sunshine duration & solar irradiation at Vavaya Ridge Upper Air Observatory in Guadalcanal Island	A7-14
Appendix 7-8-1	Calculation of PV and battery capacity in Honiara	A7-18
Appendix 7-8-2	Calculation of PV and battery capacity in Munda	A7-21
Appendix 7-8-3	Calculation of PV and battery capacity in Taro	A7-24
Appendix 7-8-4	Calculation of PV and battery capacity in Lata	A7-27
Appendix 7-8-5	Calculation of available demand on PV panel, available consecutive non-sunshine day & its recovery day on battery in Honiara	A7-30
Appendix 7-8-6	Calculation of available demand on PV panel, available consecutive non-sunshine day & its recovery day on battery in Munda	A7-31
Appendix 7-8-7	Calculation of available demand on PV panel, available consecutive non-sunshine day & its recovery day on battery in Taro	A7-32
Appendix 7-8-8	Calculation of available demand on PV panel, available consecutive non-sunshine day & its recovery day on battery in Lata	A7-33
Appendix 7-8-9	Available demand on PV panel, available consecutive non-sunshine day and recovery day on battery in Honiara	A7-34
Appendix 7-8-10	Available demand on PV panel, available consecutive non-sunshine day and recovery day on battery in Munda	A7-37
Appendix 7-8-11	Available demand on PV panel, available consecutive non-sunshine day and recovery day on battery in Taro	A7-40
Appendix 7-8-12	Available demand on PV panel, available consecutive non-sunshine day and recovery day on battery in Lata	A7-43
Appendix 7-10-1(1)	Expenses for the SHS (36Wp: with tax and others)	A7-46
Appendix 7-10-1(2)	Expenses for the SHS (36Wp: without tax and duty)	A7-46
Appendix 7-10-2(1)	Expenses for the SHS (55Wp: with tax and others)	A7-47
Appendix 7-10-2(2)	Expenses for the SHS (55Wp: without tax and duty)	A7-47
Appendix 7-10-3(1)	Expenses for the SHS (75Wp: with tax and others)	A7-48
Appendix 7-10-3(2)	Expenses for the SHS (75Wp: without tax and duty)	A7-48
Appendix 7-11-1(1)	Calculation of annual expenses for the SHS (36Wp: with tax and others)	A7-49
Appendix 7-11-1(2)	Calculation of annual expenses for the SHS (36Wp: without tax and duty)	A7-49

付属資料目次 (4)

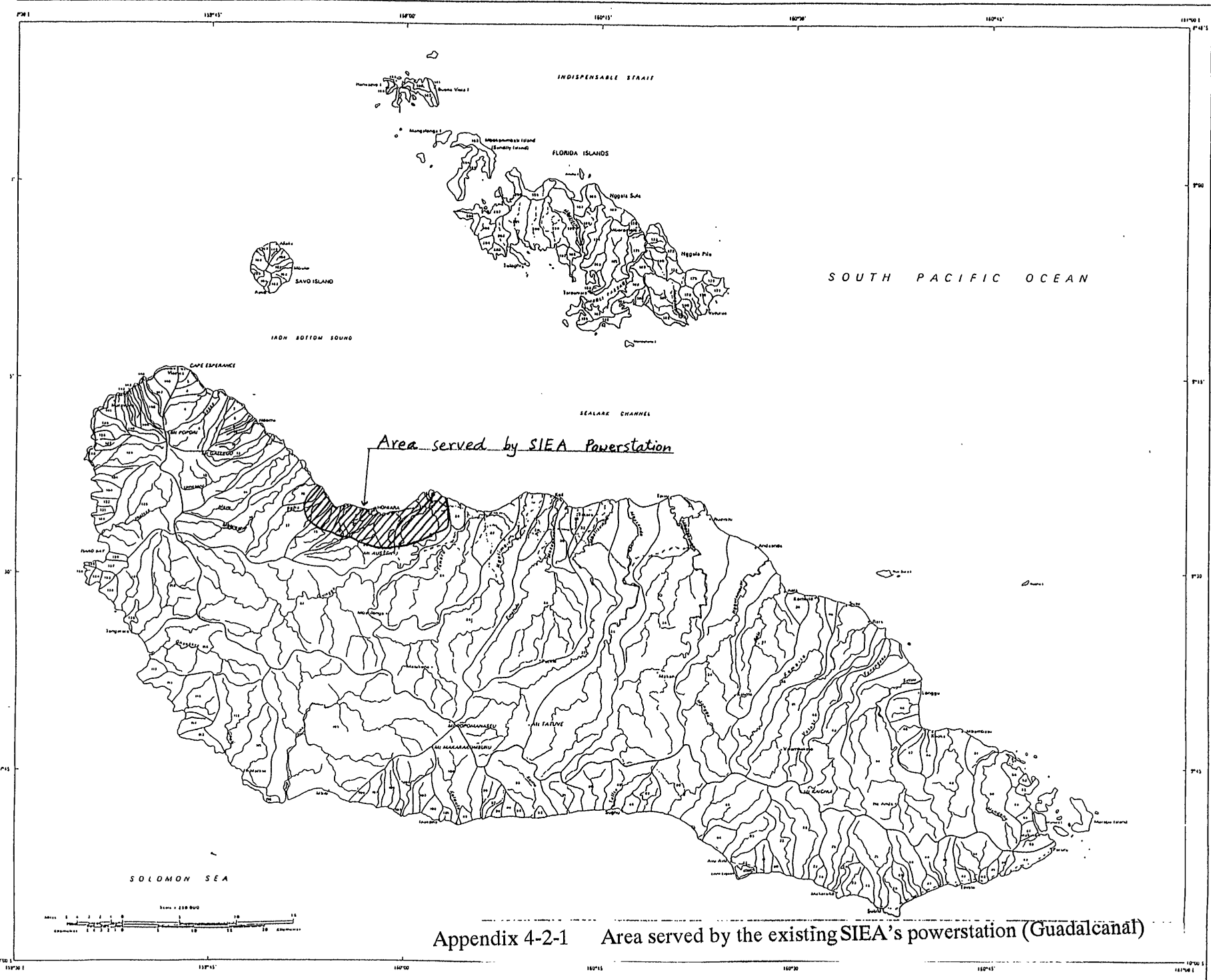
番号	タイトル	頁
第7章		
Appendix 7-11-2(1)	Calculation of annual expenses for the SHS (55Wp: with tax and others)	A7-50
Appendix 7-11-2(2)	Calculation of annual expenses for the SHS (55Wp: without tax and duty)	A7-50
Appendix 7-11-3(1)	Calculation of annual expenses for the SHS (75Wp: with tax and others)	A7-51
Appendix 7-11-3(2)	Calculation of annual expenses for the SHS (75Wp: without tax and duty)	A7-51
第10章		
Appendix 10-3-1	Area served by the future powerstation (Guadalcanal)	A10-1
Appendix 10-3-2	Area served by the future powerstation (Auki, Malu'u)	A10-2
Appendix 10-3-3	Area served by the future powerstation (Buala)	A10-3
Appendix 10-3-4	Area served by the future powerstation (Kirakira)	A10-4
Appendix 10-3-5	Area served by the future powerstation (Lata)	A10-5
Appendix 10-3-6	Area served by the future powerstation (Gizo, Munda-Noro)	A10-6
Appendix 10-3-11	Power demand and power supply development (Honiara-Lungga) Plan-1	A10-7
Appendix 10-3-12	Power demand and power supply development (Honiara-Lungga) Plan-2	A10-8
Appendix 10-3-13	Power demand and power supply development (Honiara-Lungga) Plan-3	A10-9
Appendix 10-3-14	Power demand and power supply development (Honiara-Lungga) Plan-4	A10-10
Appendix 10-3-21	Power demand and power supply development (Auki-Malu'u-Bina) Plan-1	A10-11
Appendix 10-3-22	Power demand and power supply development (Auki-Malu'u-Bina) Plan-2	A10-12
Appendix 10-3-23	Power demand and power supply development (Auki-Malu'u-Bina) Plan-3	A10-13
Appendix 10-3-24	Power demand and power supply development (Auki-Malu'u-Bina) Plan-4	A10-14
Appendix 10-3-25	Power demand and power supply development (Auki-Malu'u-Bina) Plan-5	A10-15
Appendix 10-3-26	Power demand and power supply development (Auki-Malu'u-Bina) Plan-6	A10-16
Appendix 10-3-31	Power demand and power supply development (Buala) Plan-1	A10-17
Appendix 10-3-32	Power demand and power supply development (Buala) Plan-2	A10-18
Appendix 10-3-41	Power demand and power supply development (Kirakira) Plan-1	A10-19
Appendix 10-3-42	Power demand and power supply development (Kirakira) Plan-2	A10-20
Appendix 10-3-43	Power demand and power supply development (Kirakira) Plan-3	A10-21
Appendix 10-3-51	Power demand and power supply development (Lata) Plan-1	A10-22
Appendix 10-3-52	Power demand and power supply development (Lata) Plan-2	A10-23
Appendix 10-3-61	Power demand and power supply development (Choiseul) Plan-1	A10-24
Appendix 10-3-62	Power demand and power supply development (Choiseul) Plan-2	A10-25
Appendix 10-3-71	Power demand and power supply development (Gizo) Plan-1	A10-26
Appendix 10-3-72	Power demand and power supply development (Gizo) Plan-2	A10-27
Appendix 10-3-73	Power demand and power supply development (Gizo) Plan-3	A10-28
Appendix 10-3-74	Power demand and power supply development (Noro-Munda) Plan-1	A10-29
Appendix 10-3-75	Power demand and power supply development (Noro-Munda) Plan-2	A10-30
Appendix 10-3-81	Power demand and power supply development (Tulagi) Plan-1	A10-31
Appendix 10-3-82	Power demand and power supply development (Tulagi) Plan-2	A10-32
Appendix 10-3-91	Power demand and power supply development (Rennell and Bellona) Plan-1	A10-33
Appendix 10-3-92	Power demand and power supply development (Rennell and Bellona) Plan-2	A10-34

付属資料目次 (5)

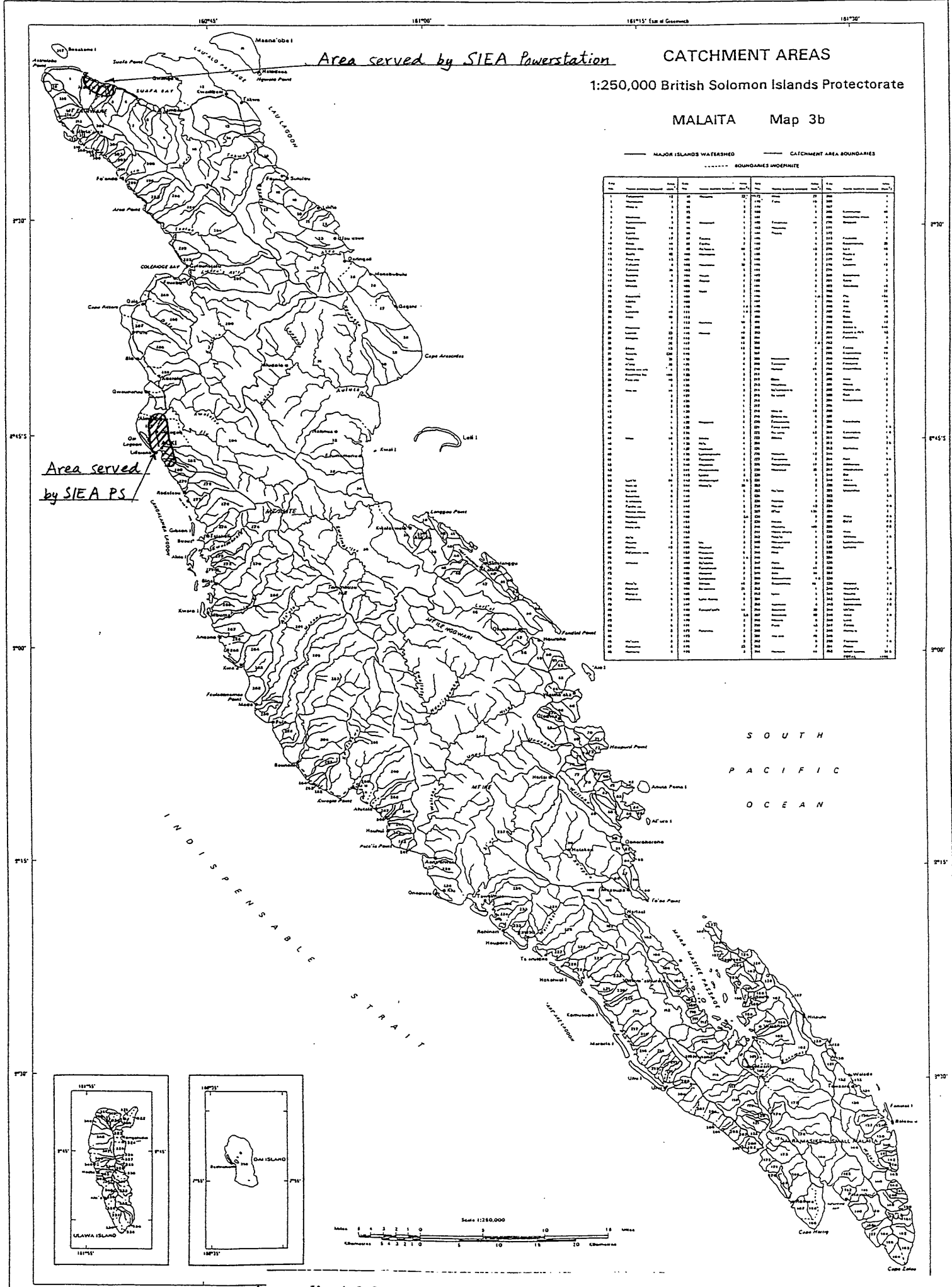
番号	タイトル	頁
第 1 2 章		
Appendix 12-1-1	LRAIC and LRMC for the master plan	A12-1
Appendix 12-1-2	Honiara-Lungga grid plan 1-4	A12-2
Appendix 12-1-3	Auki-Malu'u grid plan 1-6	A12-3
Appendix 12-1-4	Buala plan 1-2	A12-4
Appendix 12-1-5	Kirakira plan 1-3	A12-5
Appendix 12-1-6	Lata plan 1-2	A12-6
Appendix 12-1-7	Taro-Choiseul plan 1-2	A12-7
Appendix 12-1-8	Gizo plan 1-3	A12-8
Appendix 12-1-9	Noro-Munda plan 1-2	A12-9
Appendix 12-1-10	Tulagi plan 1-2	A12-10
Appendix 12-1-11	Rennell plan 1-2	A12-11
Appendix 12-2-7 (1)	Calculation of IRR (1)	A12-12
Appendix 12-2-7 (2)	Calculation of IRR (2)	A12-13
Appendix 12-2-7 (3)	Calculation of IRR (3)	A12-14
Appendix 12-2-7 (4)	Calculation of IRR (4)	A12-15
Appendix 12-2-7 (5)	Calculation of IRR (5)	A12-16
Appendix 12-2-7 (6)	Calculation of IRR (6)	A12-17
Appendix 12-2-7 (7)	Calculation of IRR (7)	A12-18
Appendix 12-2-7 (8)	Calculation of IRR (8)	A12-19
Appendix 12-2-7 (9)	Calculation of IRR (9)	A12-20
Appendix 12-2-7 (10)	Calculation of IRR (10)	A12-21
Appendix 12-2-7 (11)	Calculation of IRR (11)	A12-22

第 4 章 電力需要

A4-1



Appendix 4-2-1 Area served by the existing SIEA's powerstation (Guadalcanal)



Area served by SIEA Powerstation

CATCHMENT AREAS

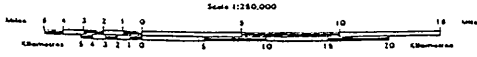
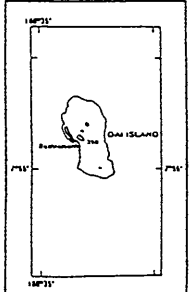
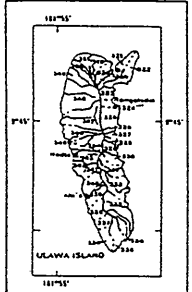
1:250,000 British Solomon Islands Protectorate

MALAITA Map 3b

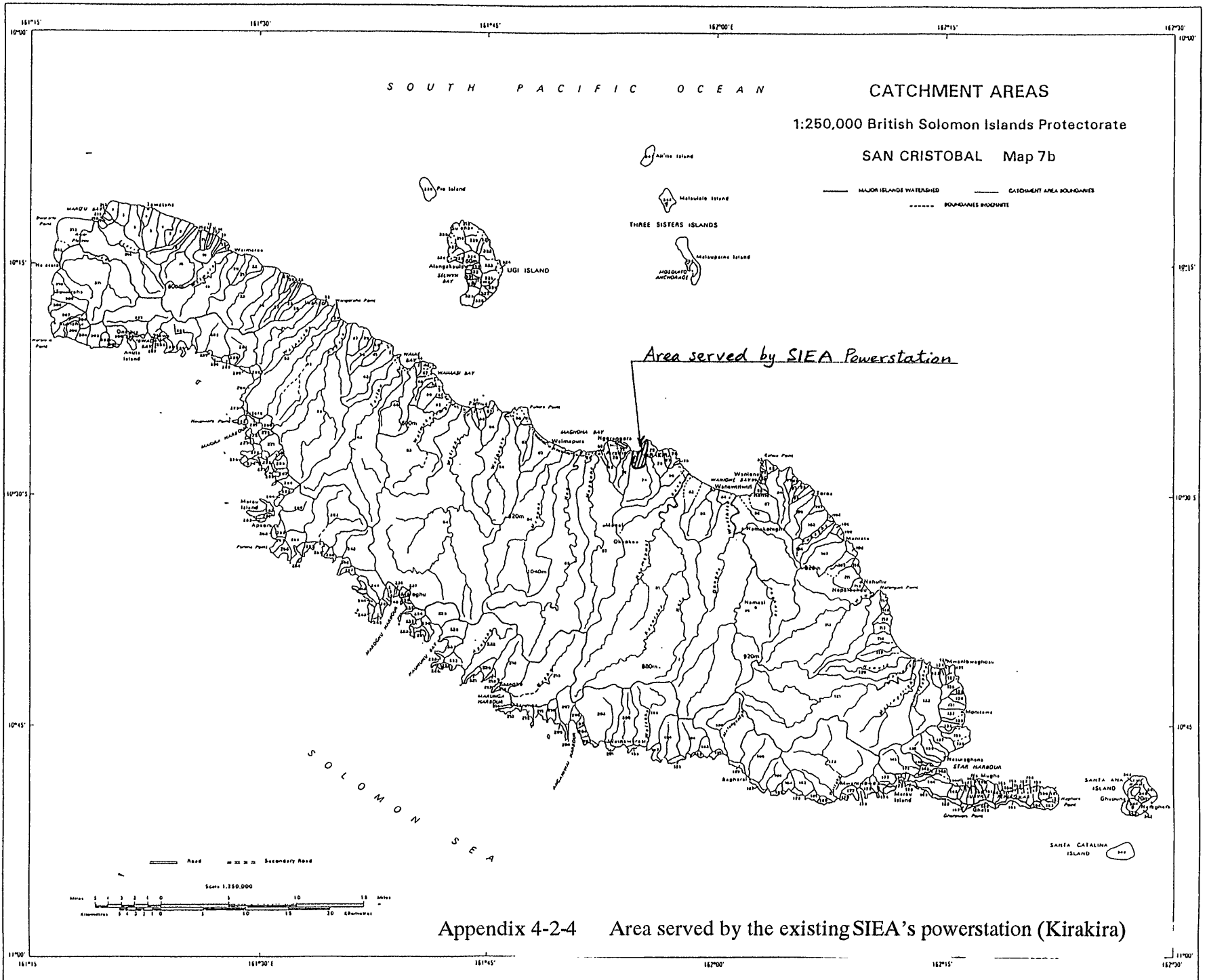
MAJOR ISLANDS WATERSHED CATCHMENT AREA BOUNDARIES
 BOUNDARIES UNDEFINITE

Area	Symbol	Area	Symbol
1	10
2	11
3	12
4	13
5	14
6	15
7	16
8	17
9	18
10	19
11	20
12	21
13	22
14	23
15	24
16	25
17	26
18	27
19	28
20	29
21	30
22	31
23	32
24	33
25	34
26	35
27	36
28	37
29	38
30	39
31	40
32	41
33	42
34	43
35	44
36	45
37	46
38	47
39	48
40	49
41	50
42	51
43	52
44	53
45	54
46	55
47	56
48	57
49	58
50	59
51	60
52	61
53	62
54	63
55	64
56	65
57	66
58	67
59	68
60	69
61	70
62	71
63	72
64	73
65	74
66	75
67	76
68	77
69	78
70	79
71	80
72	81
73	82
74	83
75	84
76	85
77	86
78	87
79	88
80	89
81	90
82	91
83	92
84	93
85	94
86	95
87	96
88	97
89	98
90	99
91	100

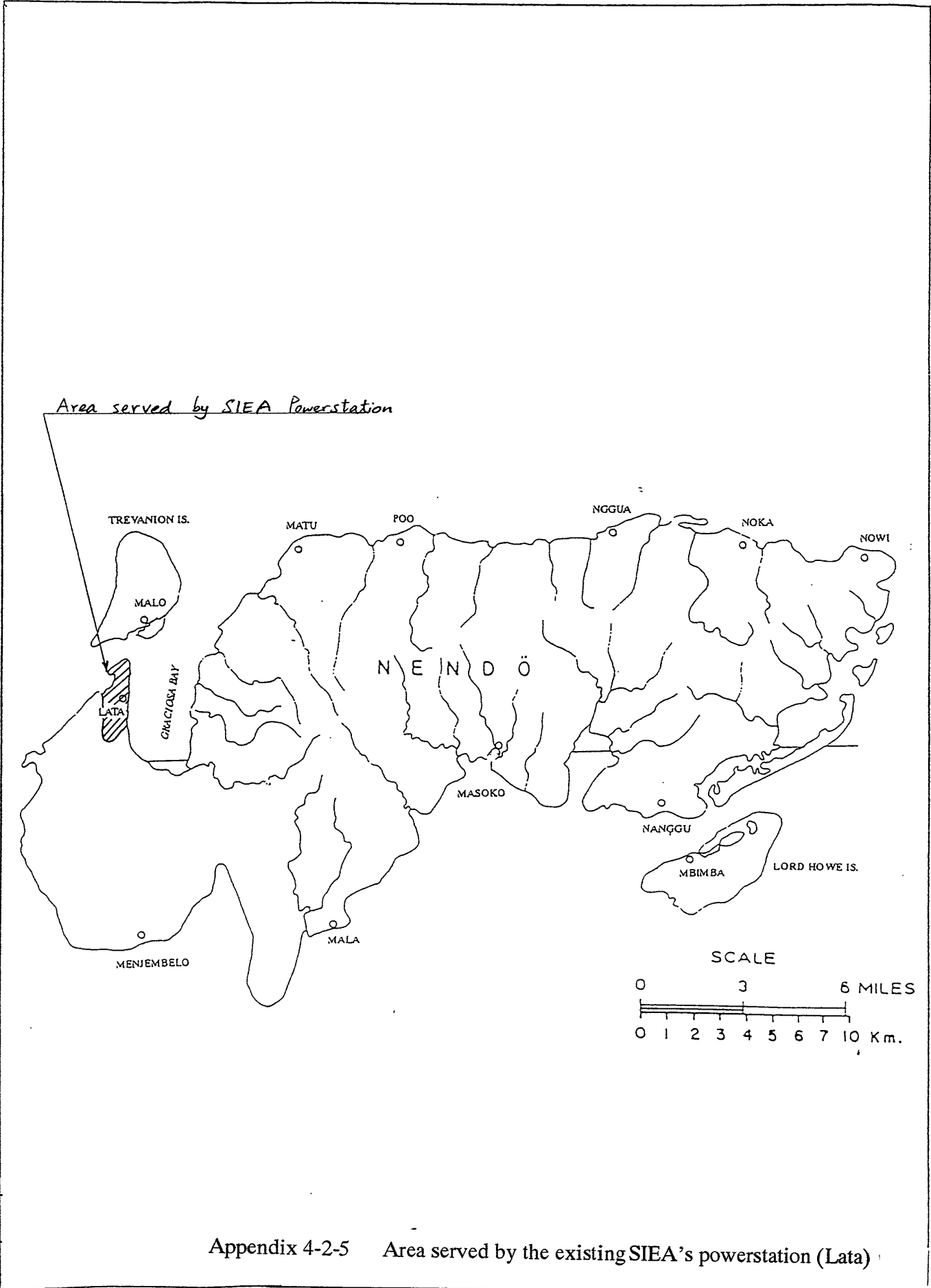
Area served by SIEA PS



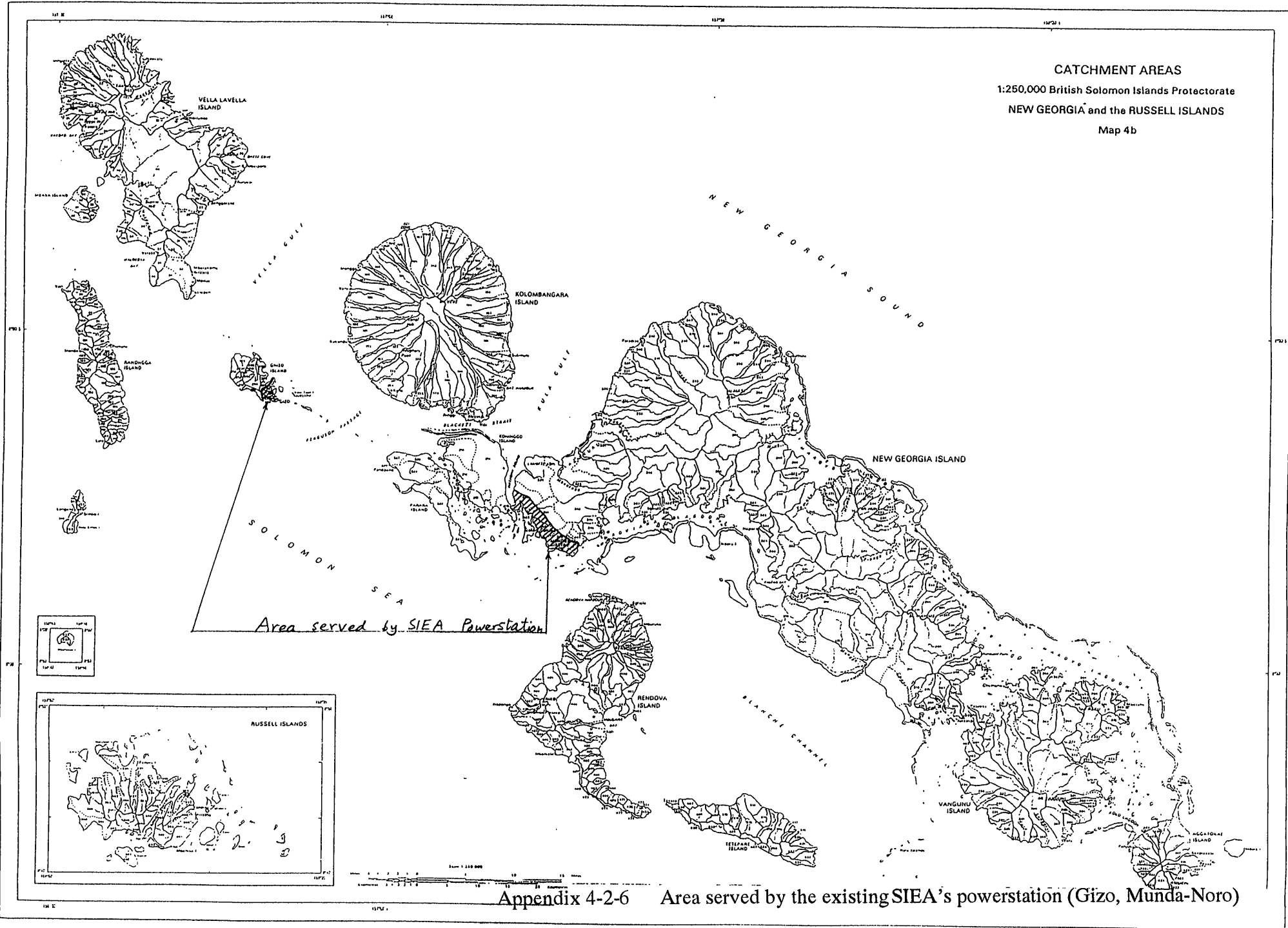
Appendix 4-2-2 Area served by the existing SIEA's powerstation (Auki, Malu'u)



A4-4



CATCHMENT AREAS
 1:250,000 British Solomon Islands Protectorate
 NEW GEORGIA and the RUSSELL ISLANDS
 Map 4b



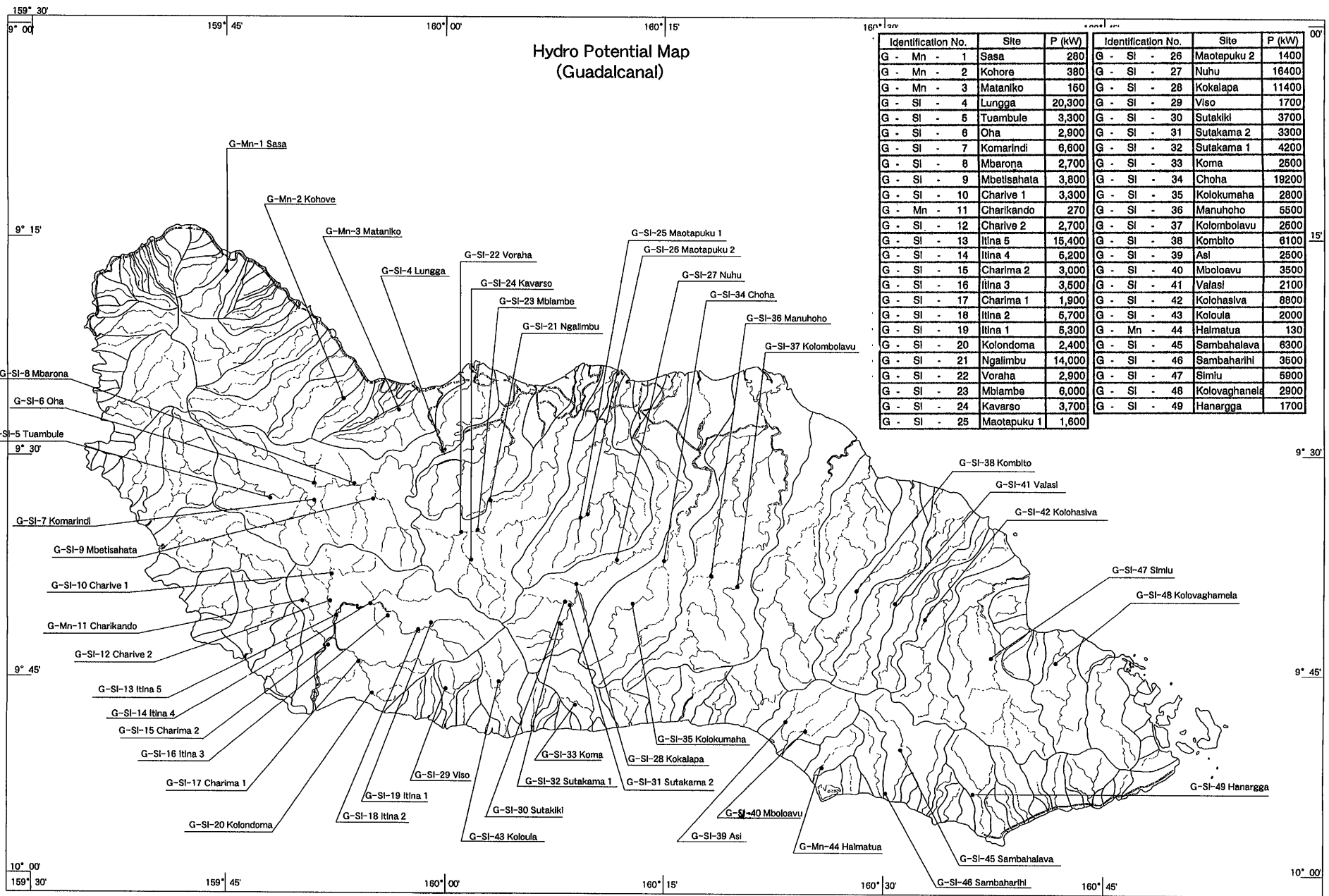
Area served by SIEA Powerstation

Appendix 4-2-6 Area served by the existing SIEA's powerstation (Gizo, Munda-Noro)

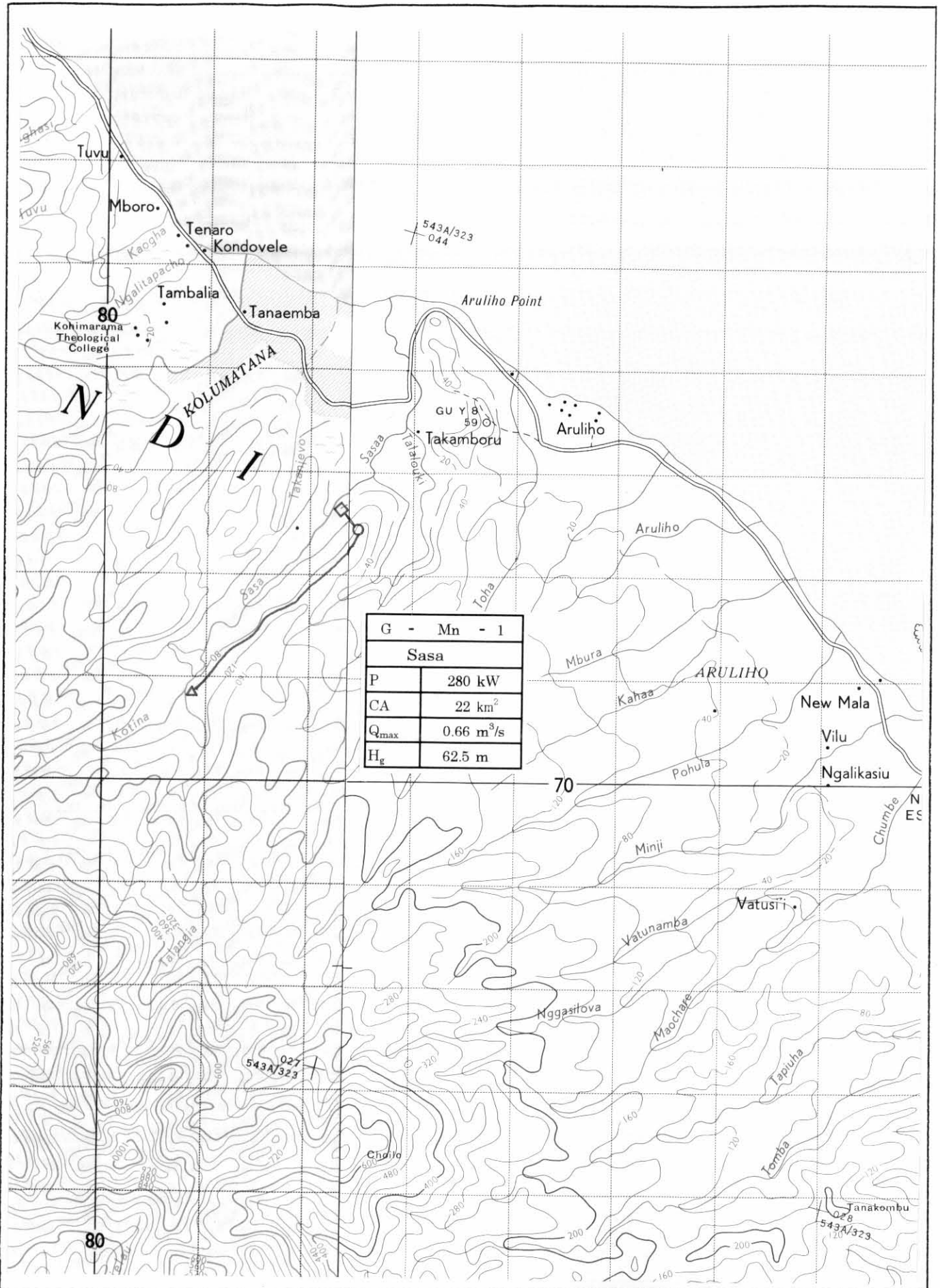
A4-6

第 5 章 小水力発電

AS-111



Appendix 5-1-1 Hydro Potential Map of Guadalcanal



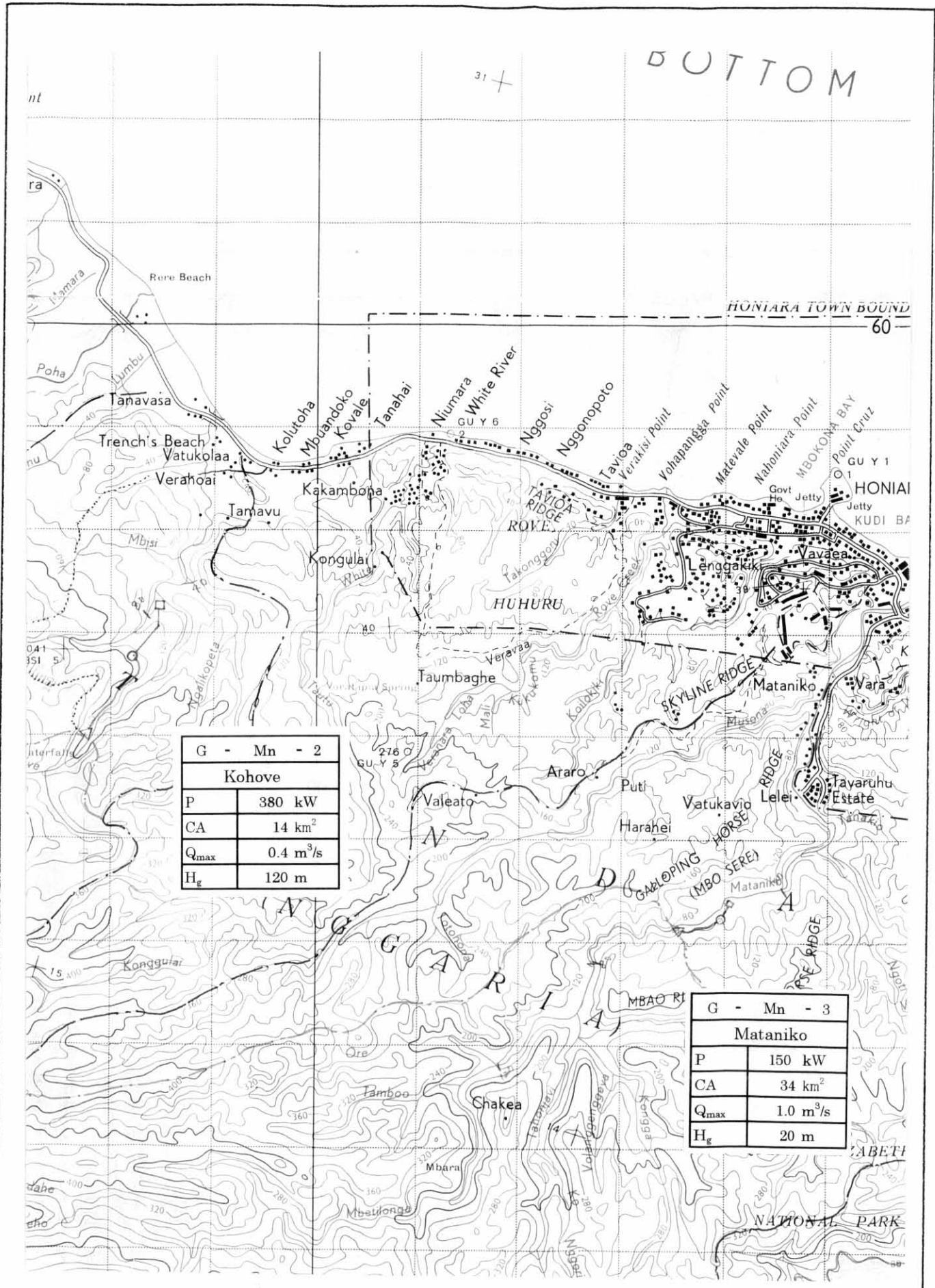
JAPAN INTERNATIONAL COOPERATION AGENCY

TOKYO ELECTRIC POWER SERVICES CO., LTD
IC NET CO., LTD

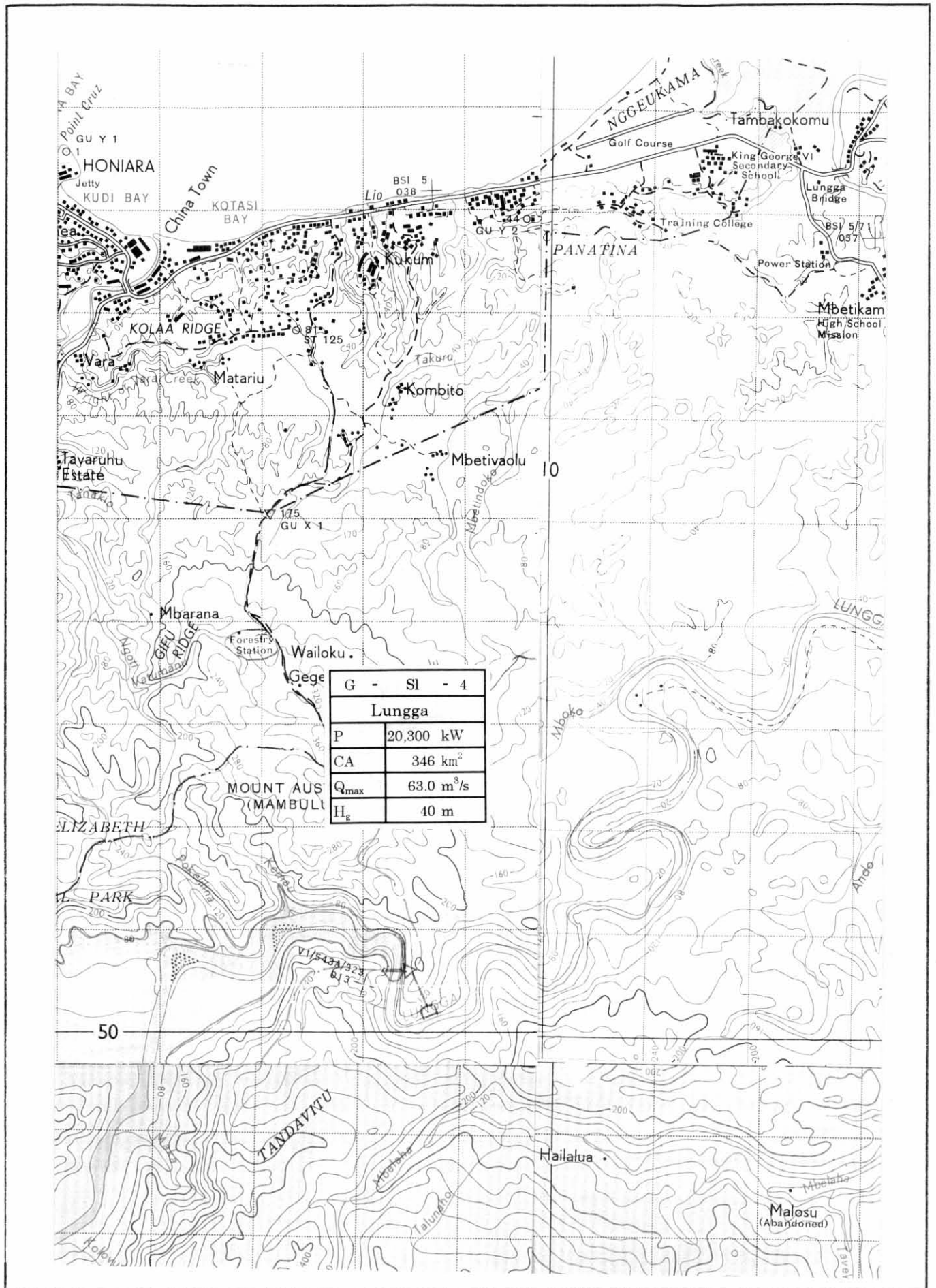
MASTER PLAN STUDY
OF POWER
DEVELOPMENT IN
SOLOMON ISLANDS

TITLE

Appendix 5-1- 1 (1)
Hydro Potential Map
Guadalcanara (1)



JAPAN INTERNATIONAL COOPERATION AGENCY TOKYO ELECTRIC POWER SERVICES CO., LTD IC NET CO., LTD	MASTER PLAN STUDY OF POWER DEVELOPMENT IN SOLOMON ISLANDS	TITLE Appendix 5-1-21 (2) Hydro Potential Map Guadalcanara (2)
---	--	--

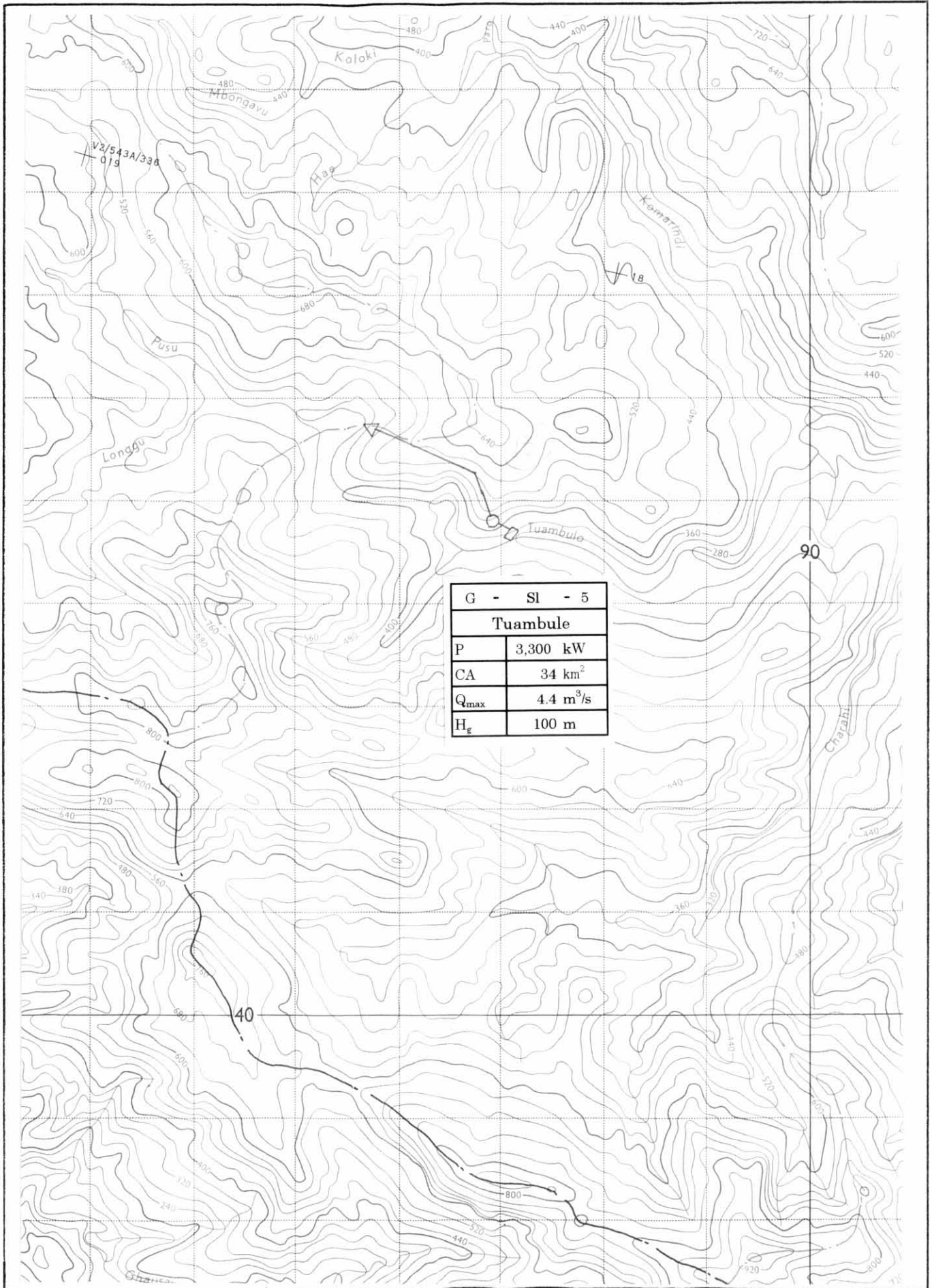


JAPAN INTERNATIONAL COOPERATION AGENCY

TOKYO ELECTRIC POWER SERVICES CO., LTD
IC NET CO., LTD

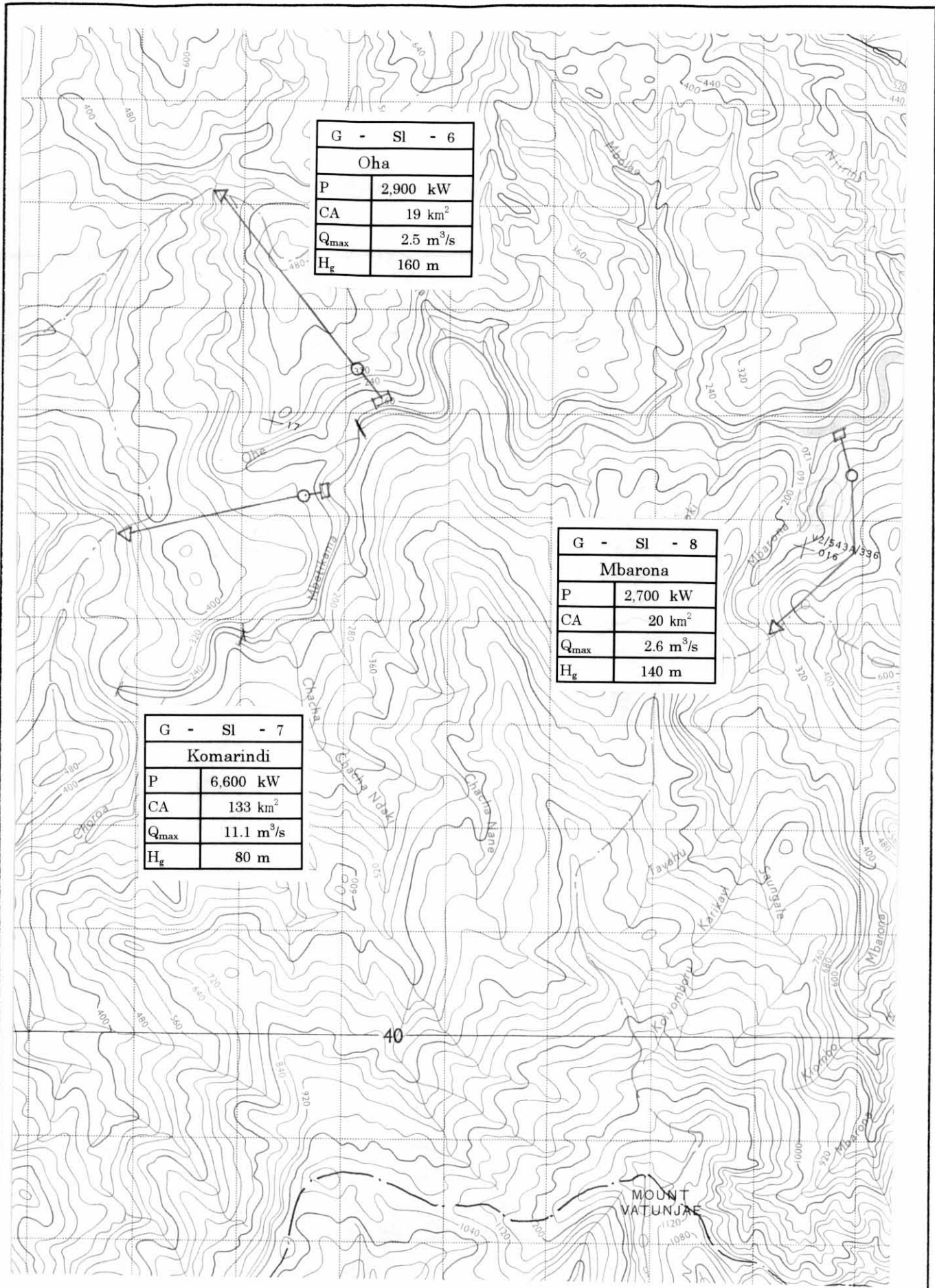
MASTER PLAN STUDY
OF POWER
DEVELOPMENT IN
SOLOMON ISLANDS

TITLE **Appendix 5-1-31 (3)**
Hydro Potential Map
Guadalcanal (3)



G - SI - 5	
Tuambule	
P	3,300 kW
CA	34 km ²
Q _{max}	4.4 m ³ /s
H _g	100 m

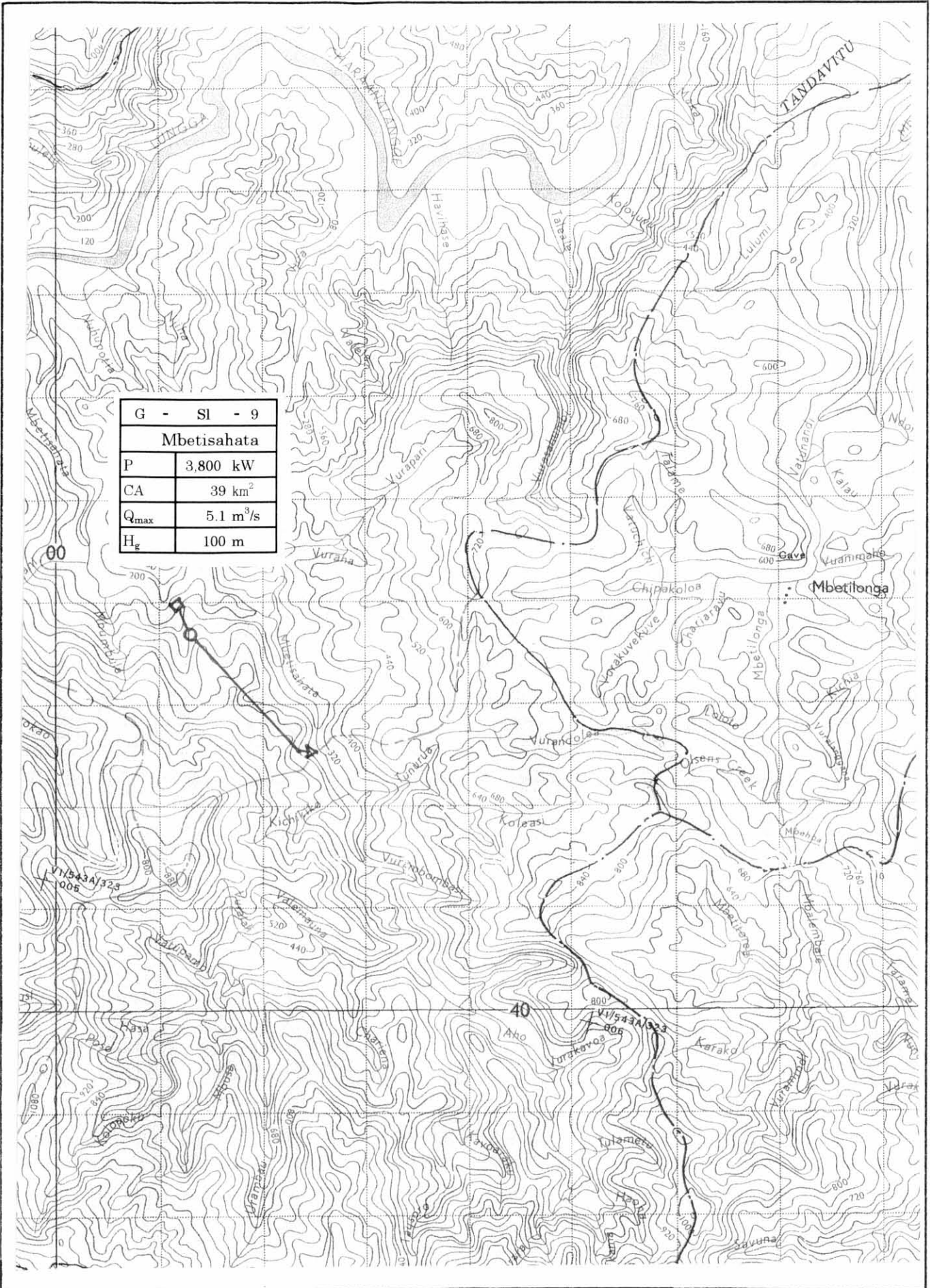
JAPAN INTERNATIONAL COOPERATION AGENCY	MASTER PLAN STUDY OF POWER DEVELOPMENT IN SOLOMON ISLANDS	TITLE Appendix 5-1-41 (4) Hydro Potential Map Guadalcanara (4)
TOKYO ELECTRIC POWER SERVICES CO., LTD IC NET CO., LTD		



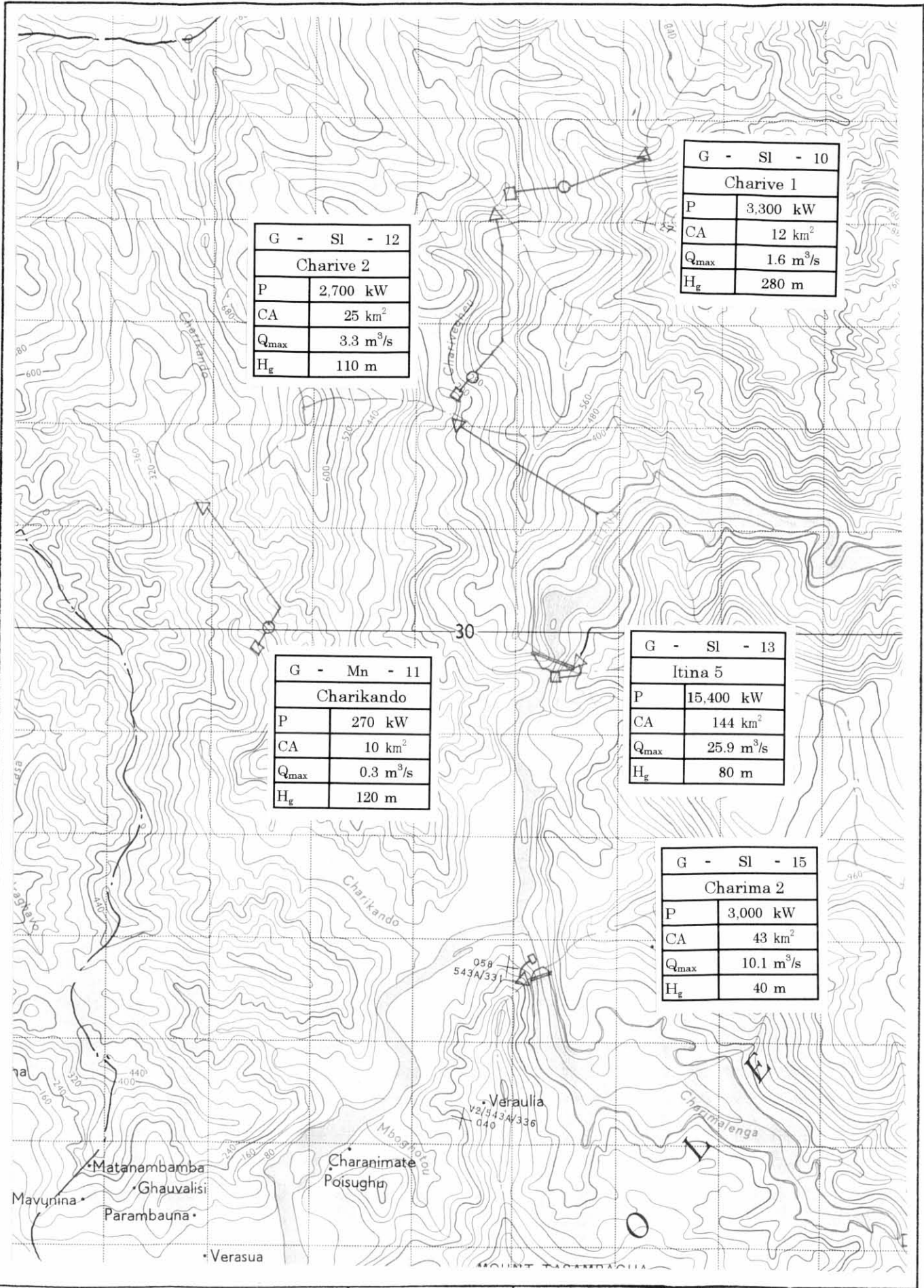
G - SI - 6	
Oha	
P	2,900 kW
CA	19 km ²
Q _{max}	2.5 m ³ /s
H _g	160 m

G - SI - 8	
Mbarona	
P	2,700 kW
CA	20 km ²
Q _{max}	2.6 m ³ /s
H _g	140 m

G - SI - 7	
Komarindi	
P	6,600 kW
CA	133 km ²
Q _{max}	11.1 m ³ /s
H _g	80 m



JAPAN INTERNATIONAL COOPERATION AGENCY	MASTER PLAN STUDY OF POWER DEVELOPMENT IN SOLOMON ISLANDS	TITLE Appendix 5-1-61 (6) Hydro Potential Map Guadalcanal (6)
TOKYO ELECTRIC POWER SERVICES CO., LTD IC NET CO., LTD		



G - SI - 12	
Charive 2	
P	2,700 kW
CA	25 km ²
Q _{max}	3.3 m ³ /s
H _g	110 m

G - SI - 10	
Charive 1	
P	3,300 kW
CA	12 km ²
Q _{max}	1.6 m ³ /s
H _g	280 m

G - Mn - 11	
Charikando	
P	270 kW
CA	10 km ²
Q _{max}	0.3 m ³ /s
H _g	120 m

G - SI - 13	
Itina 5	
P	15,400 kW
CA	144 km ²
Q _{max}	25.9 m ³ /s
H _g	80 m

G - SI - 15	
Charima 2	
P	3,000 kW
CA	43 km ²
Q _{max}	10.1 m ³ /s
H _g	40 m

JAPAN INTERNATIONAL COOPERATION AGENCY	MASTER PLAN STUDY OF POWER DEVELOPMENT IN SOLOMON ISLANDS	TITLE
TOKYO ELECTRIC POWER SERVICES CO., LTD IC NET CO., LTD		Appendix 5-1-1 (7) Hydro Potential Map Guadalcanara (7)