

Figure A.3.4.1 (8) Borehole Log BH7

## GEOLOGICAL RECORD OF BORING

Date of Drilling: 07/05/2000		
Project : Galle Port Development Project		Angle from the vertical: 0
Bore Hole Number : BH 08	Depth of Hole (m)	2.20
Ground Ele. (m) :	Depth to the ground water level (m)	
Dia of the hole (mm) : 100		
Drilled by : GBME	Logged By	BSY

Elevation (m)	Depth (m)	Thick-ness (m)	Field Observations				Standard Penetration Test														
			Column Section	Soil / Rock Classifn.	Colour	Description	Depth (m)	(N)													
									0	10	20	30	40	50	60						
0.00	-11.50																				
0.50																					
1.00	-12.70	1.20	1.20		ML	Grayish brown	Soft very fine sand mixed with silt mica and sea shells	1.00	>50												
1.50					Ch. Gn.	Gray	Slightly weathered bed rock		20cm												
2.00	-13.70	2.20	1.00				CR = 73% RQD = 65%														
2.50							Bore hole terminated at 2.20m below the sea bed in slightly weathered bed rock														
3.00																					
3.50																					
4.00																					
4.50																					
5.00																					
5.50																					
6.00																					
6.50																					
7.00																					
7.50																					
8.00																					
8.50																					
9.00																					
9.50																					
10.00																					
10.50																					
11.00																					
11.50																					
12.00																					
12.50																					
13.00																					
13.50																					
14.00																					
14.50																					
15.00																					
15.50																					
16.00																					
16.50																					
17.00																					
17.50																					
18.00																					
18.50																					
19.00																					
19.50																					
20.00																					
20.50																					
21.00																					
21.50																					
22.00																					
22.50																					
23.00																					

Figure A.3.4.1 (9) Borehole Log BH8

## GEOLOGICAL RECORD OF BORING

Date of Drilling: 26/04/2000

Project : Galle Port Development Project

Angle from the vertical: 0

Bore Hole Number : BH 09

Depth of Hole (m) 1.00

Ground Ele. (m) :

Depth to the ground water level (m)

Dia of the hole (mm) : 100

Drilled by : GBME

Logged By BSY

Elevation (m)	Depth (m)	Thick-ness (m)	Field Observations				Standard Penetration Test												
			Column Section	Soil / Rock Classifn.	Colour	Description	Depth (m)	(N)	0	10	20	30	40	50	60				
0.00	-11.80																		
0.50				Ch Gn	Grayish	Slightly to moderately weathered bed													
1.00	-12.80	1.00	1.00		brown	rock. Cr = 58% RQD = 15%													
1.50							Bore hole terminated at 1.00m below the sea bed in slightly to moderately weathered bed rock												
2.00																			
2.50																			
3.00																			
3.50																			
4.00																			
4.50																			
5.00																			
5.50																			
6.00																			
6.50																			
7.00																			
7.50																			
8.00																			
8.50																			
9.00																			
9.50																			
10.00																			
10.50																			
11.00																			
11.50																			
12.00																			
12.50																			
13.00																			
13.50																			
14.00																			
14.50																			
15.00																			
15.50																			
16.00																			
16.50																			
17.00																			
17.50																			
18.00																			
18.50																			
19.00																			
19.50																			
20.00																			
20.50																			
21.00																			
21.50																			
22.00																			
22.50																			
23.00																			

Figure A.3.4.1 (10) Borehole Log BH9

#### Appendix 4.6.1 Duties of the Ports Authority

Nine duties of the Ports Authority defined in the Act

Among them, 1) and 2) specify the services to be provided, 3) to 7) the regulation and control of port activities and 8) and 9) the Authority to be self supporting.

- 1) To provide in any specified port, efficient and regular services for stevedoring, lighterage, shipping and transshipping, landing and warehousing ; for wharfage, the supply of water, fuel and electricity to vessels, for handling petroleum, petroleum products and Lubricating oils to and from vessels and between bunkers and depots ; for pilotage and the mooring of vessels : for diving and under-water ship repairs and for other services incidental thereto;
- 2) To provide in any specified port, efficient and regular tally and protective services;
- 3) To regulate and control navigation within the limits of, and the approaches to the specified ports;
- 4) To maintain port installation and promote the use, improvement and development of the specified ports;
- 5) To co-ordinate and regulate all activities within any specified port excluding the functions of the Customs;
- 6) To establish and maintain on and off the coast of Sri Lanka such lights and other means for the guidance and protection of vessels as are necessary for navigation in and out of the specified ports;
- 7) To perform such other duties as are imposed on the Ports Authority by this Act;
- 8) To conduct the business of the Ports Authority in such manner and to make in accordance with this Act such charges for services rendered by the Authority as will secure that the revenue of the Authority is not less than sufficient for meeting the charges which are proper to be made to the revenue of the Authority, to replace assets, make new investments and to establish and maintain an adequate general reserve; and
- 9) To endeavour to manage the specified ports and each of them as a self-supporting enterprise in accordance with the provisions of this Acts.

## Appendix 4.6.2 Functions of Divisions in the Ports Authority

Functions of divisions in the Ports Authority are set out as follows;

- 1) Operations Division: To provide services for stevedoring, lighterage, shipping, transshipping, landing and warehousing of cargo; operation and management of Container terminals; supply of fresh water to ships, hiring out of cargo handling equipment, and other services incidental thereto.
- 2) Engineering Division: To maintain and improve all civil engineering structure, roads, paved areas, maritime facilities and to acquire, fabricate and maintain plant/machinery and floating craft required for operational activities and provides all other engineering services to meet the needs of the Ports Authority.
- 3) Planning & Development Division: To provide planned development of the Ports coming under the purview of the Ports Authority and implement such developments in case of foreign funding.
- 4) Contract & Design Division: To prepare a contract of project, proceed with basic design and oversee project progress in case of domestic funding.
- 5) Electrical Division: To play same function as Engineering Division concerning Electrical & Electric Engineering.
- 6) Supplies Division: To effect purchases (local and foreign) and supply all plant/machinery equipment, spare parts and all other general stores items required for the operational activities of the Ports and their maintenance.
- 7) Navigation Division : Piloting of ships in and out of harbour, berthing of ships, providing services of tugs and floating cranes;
- 8) Personnel Division: To manage and control recruitment, determine terms and conditions of service of all personnel including labour and non-labour, maintain good and proper industrial relations and provide adequate welfare facilities.
- 9) Welfare & Industrial Relations Division: To introduce and develop new concepts of social welfare for high standard of quality of life of families in the Ports; as welfare measures, economic welfare, medical welfare, training & educational welfare, housing & property welfare, safety & insurance welfare, transport welfare, sports welfare, welfare for service appreciation, religious welfare, asthmatic development welfare and welfare for common services are provided.
- 10) Commercial Division : To ensure proper documentation as well as the systematic delivery of import cargo after recovery of wharfage charges, rent and other charges according to the tariff; speedy checking of service certificates for billing on stevedoring services; maintenance of bonding services; disposal of claims from importers; sale of uncleared cargo, unserviceable assets and old equipment by auction or tender; registration of clearing agencies and wharf clerks operating in the Ports; provision of regular tally services on vessels; drawing up of cargo storage plans and bay plans; surveying of bad order cargo on vessels.
- 11) Security Division: To protect and safeguard the property of the Ports Authority, all cargo, ashore and afloat; provide on board security services, warehouse security, etc.
- 12) Information System Division: To set up efficient information systems for improving port management and operation by enhancement of the computer facilities and development of application systems.
- 13) Medical Division: To organize, manage and provide medical services and facilities to personnel of the Ports Authority.

- 14) Training Institute: To provide systematic training to meet the requirements of the Ports Authority and administer and control SLPA Training Institute.
- 15) Legal Division: To attend to all legal matters and matters related to Board of Directors of the Ports Authority. The chief law officer also functions as the secretary to the Board of Directors.
- 16) Finance Division: To carry out the financial management of the Ports Authority by directing and coordinating the work of accounting staff and by designing and maintaining accounting systems adequate to the needs of the organization.
- 17) Administrative Secretariat: To co-ordinate the day-to-day administration work of the Ports Authority and attend to all matters pertaining to Real Estate of the Ports Authority and the allocation of SLPA quarters.
- 18) Internal Audit Division: To review and appraise the soundness, adequacy and application of accounting procedures and financial controls in the organization and ascertain the extent of compliance with established policies, systems, programs and procedures of such financial controls.
- 19) Media Consultant: To be a spokesman of SLPA.

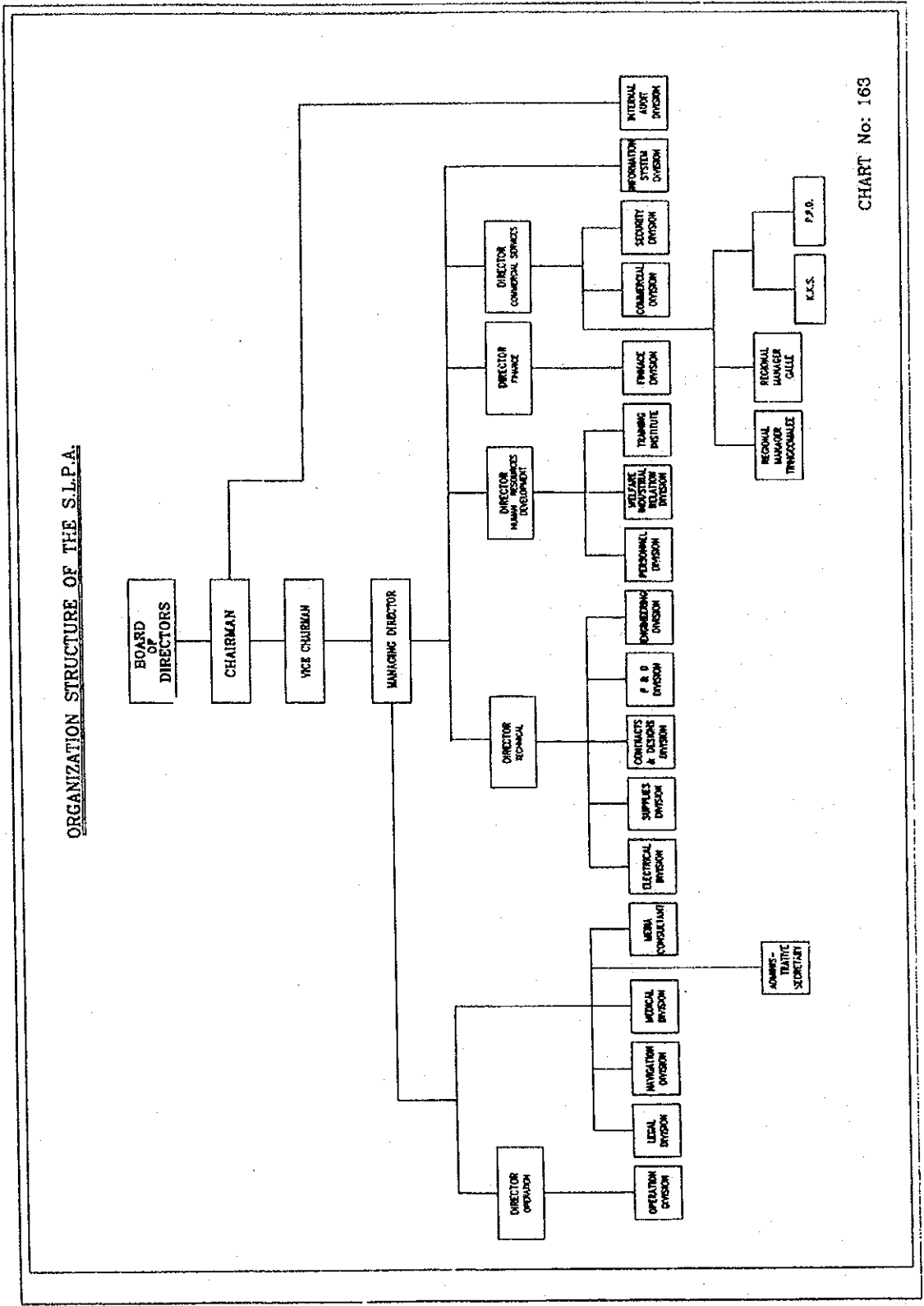


CHART No: 163

Figure A 4.6.1 Organization Structure of SLPA

Table A4.6.1 Members of Board of Directors

Post	Function	Appointment
Chairman	Chief Executive of SLPA	Ministry of Ports Development, Rehabilitation and Reconstruction (MOPDRR)
Vice Chairman	Support to Chairman	(MOPDRR)
Managing Director	Direction of business Administrative control of the employees	(MOPDRR)
Working Director	-	(MOPDRR)
Director	-	(MOPDRR)
Director	-	(MOPDRR)
Director	(Director General of Customs)	Sri Lanka Customs
Director	(Deputy Director of Fiscal Policy Division, General Treasury)	Ministry of Finance
Director	(Chairman of Ceylon Fisheries Corporation)	Ministry of Fisheries

Table A4.6.3 Number of Employee in SLPA (as of 29, February, 2000)

Division/Grade	Executive	Non-Labodr	Technical	Labour	Total
Operations	60	2,671	2	3,286	6,019
Commercial	17	532	-	44	593
Personnel	14	244	-	1	259
Welfare & Industrial Relations	9	354	2	-	365
Secretariat	12	125	-	5	142
Contracts & Designs	24	105	10	10	149
Engineering	108	1,082	1,555	1,269	4,014
Supplies	12	252	2	68	334
Electrical	4	36	183	147	370
Planning Div.	20	66	9	28	123
Training Institute	44	120	12	19	195
Internal Audit	11	110	-	-	121
Medical	7	68	-	-	75
Security	38	2,066	5	15	2,124
Harbour Master	58	381	918	112	1,469
Finance	66	726	-	-	792
Legal	9	38	-	-	47
Information System	42	40	-	-	82
Colombo Sub Total	555	9,016	2,698	5,004	17,273
Galle	14	224	91	439	768
Trincomalee	15	422	121	504	1,062
Total	584	9,662	2,910	5,947	19,103



Table A4.6.2 Working condition in Colombo

Services	Operating Hours	Number of Shifts	Break Time & Meal Time	Number of Closing Days in a Year	Date of Closing Days in a Year
Pilotage	24 hours	1 pilot: 730 - 730 2 pilots: 830 - 830	Non	1	May Day
Break Bulk Cargo Operation (stevedoring/longshoring)	(day) 730 - 1630 (night) 1630 - 630	2 shifts	1200 - 1300 2400 - 100	2	New year's Day & May Day
Container Loading/Unloading	(day) 700 - 1800 (night) 1800 - 700	2 shifts	1200 - 1230 1500 - 1515 2100 - 2130 2300 - 2315 400 - 415	1	May Day
Container Handling (marshalling/stacking containers)	(day) 700 - 1800 (night) 1800 - 700	2 shifts	1200 - 1230 1500 - 1515 2100 - 2130 2300 - 2315 400 - 415	1	May Day
Stuffing/Destuffing Containers	(day) 730 - 1630 (night) 1630 - 630	2 shifts	1200 - 1230 2100 - 2130 630 - 730	1	May Day
Delivering/Receiving Cargoes	(FCL) 24 hours (LCL) 730 - 2100	1 shift	Working is based on Customs Schedule	1	May Day
Gate Operation of CY	(day) 730 - 1730 (night) 1730 - 2100, 2130 - 630	2 shifts day & night	Non	1	May Day
Water Supply	24 hours	1 shift	1200 - 1230	1	May Day
Garbage Collection	730 - 1900	1 shift	1200 - 1230	1	May Day
Customs Clearance	900 - 1645 available till 2200 upon request	1 shift	1200 - 1230	Saturday, Sunday, Government Holidays	
Quarantine Inspection	900 - 1645 if necessary 24 hrs.	1 shift	No	Sunday, Government Holidays, Saturday's work upon request.	
Office Work of the Ports Authority	900 - 1715	1 shift	1230 - 1300	Saturday, Sunday, Government Holidays	

Note: In case of cargo operation, work is continuous but workers take rests by turns

Table A4.6.4 Share of Employees in SLPA (as of 29, February, 2000)

Division/Grade	Executive	Non-Labour	Technical	Labour	Total
Operations	0.3%	14.0%	0.0%	17.2%	31.5%
Commercial	0.1%	2.8%	-	0.2%	3.1%
Personnel	0.1%	1.3%	-	0.0%	1.4%
Welfare & Industrial Relations	0.0%	1.9%	0.0%	-	1.9%
Secretariat	0.1%	0.7%	-	0.0%	0.7%
Contracts & Designs	0.1%	0.5%	0.1%	0.1%	0.8%
Engineering	0.6%	5.7%	8.1%	6.6%	21.0%
Supplies	0.1%	1.3%	0.0%	0.4%	1.7%
Electrical	0.0%	0.2%	1.0%	0.8%	1.9%
Planning Div.	0.1%	0.3%	0.0%	0.1%	0.6%
Training Institute	0.2%	0.6%	0.1%	0.1%	1.0%
Internal Audit	0.1%	0.6%	-	-	0.6%
Medical	0.0%	0.4%	-	-	0.4%
Security	0.2%	10.8%	0.0%	0.1%	11.1%
Harbour Master	0.3%	2.0%	4.8%	0.6%	7.7%
Finance	0.3%	3.8%	-	-	4.1%
Legal	0.0%	0.2%	-	-	0.2%
Information System	0.2%	0.2%	-	-	0.4%
Colombo Sub Total	2.9%	47.2%	14.1%	26.2%	90.4%
Galle	0.1%	1.2%	0.5%	2.3%	4.0%
Trincomalee	0.1%	2.2%	0.6%	2.6%	5.6%
Total	3.1%	50.6%	15.2%	31.1%	100.0%

Table A 4.6.5 Berth Assignment at JCT as a case of Public Terminal

Case	Vessel	Reserved Time	Actual Arrived Time	Priority		Remarks
				Vacant Berth	Occupied Berth	
Case 1	Vessel 'A'	6:00	6:00	2 nd	1 st	Within 4 hours deviation from original time, the Priority remains.
	Vessel 'B'	9:00	5:30	1 st	2 nd	
Case 2	Vessel 'A'	6:00	6:00	1 st	1 st	Over 4 hours deviation from original time, the Priority doesn't remain.
	Vessel 'B'	9:00	4:00	2 nd	2 nd	



Table A.6.1 Population of Sri Lanka and Southern Province

(In thousands)

Year	Galle (a)	Matara (a)	Hambantota (a)	Southern Province Sub-total	Share of South (%)	Sri Lanka (b)
1989	922	757	502	2,181	13.0	16,825
1990	932	765	510	2,207	13.0	16,993
1991	946	776	517	2,239	13.0	17,247
1992	958	786	524	2,268	13.0	17,405
1993	971	797	531	2,299	13.0	17,619
1994	983	810	537	2,330	13.0	17,865
1995	999	826	549	2,374	13.1	18,112
1996	1,007	832	549	2,388	13.0	18,315
1997	1,019	842	554	2,415	13.0	18,552
1998	1,030	852	558	2,440	13.0	18,774

Source : (a) Registrar General's Office

(b) Department of Census and Statistics, Ministry of Finance & Planning

Table A.6.2 Annual Growth Rate of GDP in Sri Lanka and Southern Province  
at 1990 Constant Prices

Year	Sri Lanka (Rs.Million)	Growth Rate (%)	Southern Province (Rs.Million)	Growth Rate of South (%)	Share of South (%)
1990	317,904	6.2	30,064		9.5
1991	333,230	4.8	33,885	12.7	10.2
1992	347,822	4.4	34,707	2.4	10.0
1993	371,876	6.9	37,423	7.8	10.1
1994	392,884	5.6	38,507	2.9	9.8
1995	414,608	5.5	40,357	4.8	9.7
1996	430,186	3.8	41,728	3.4	9.7
1997	457,905	6.4	44,410	6.4	9.7
1998	479,653	4.7			

Source : National Planning Department (At Constant-1990-Price),  
Ministry of Finance & Planning

Table A.6.3 Import Container Cargo Volume through Colombo Port in 1999 (1)

NO	ITEMS	Jan %	July %	Average
<b>100</b>	<b>Food Stuffs</b>	<b>29.60%</b>	<b>22.62%</b>	<b>26.11%</b>
101	Potatoes	5.30%	4.95%	5.12%
102	Beans	4.90%	0.33%	2.62%
103	Onions	2.90%	4.81%	3.86%
104	Rice	2.50%	0.55%	1.52%
105	Fish	1.80%	1.52%	1.66%
106	Suger	1.70%	1.45%	1.58%
107	Maize	1.60%	0.00%	0.80%
108	Fruits	1.30%	0.53%	0.92%
109	Flour	1.20%	0.84%	1.02%
110	Dairy Products	1.10%	1.54%	1.32%
111	Seeds	0.80%	0.30%	0.55%
112	Fish Meal	0.70%	0.28%	0.49%
113	Beverage	0.70%	1.17%	0.93%
114	Spice	0.40%	0.67%	0.53%
115	Seasoning	0.30%	0.00%	0.15%
116	Other Foodstuffs	2.40%	3.69%	3.05%
<b>20</b>	<b>Consumer Goods</b>	<b>29.50%</b>	<b>22.52%</b>	<b>26.01%</b>
21	Household Goods	1.60%	1.14%	1.37%
22	Personal effects	1.00%	2.79%	1.89%
23	Furniture	0.50%	0.69%	0.60%
24	Household Electricals	0.30%	0.60%	0.45%
25	Garments	0.20%	0.74%	0.47%
26	Miscellaneous	25.90%	16.56%	21.23%
<b>30</b>	<b>Metal</b>	<b>6.80%</b>	<b>7.16%</b>	<b>6.98%</b>
31	Iron and steel products	5.10%	3.96%	4.53%
32	Copper products	0.80%	0.29%	0.54%
33	Zinc products	0.40%	0.00%	0.20%
34	Other metal products	0.50%	2.92%	1.71%
<b>40</b>	<b>Ceramics</b>	<b>0.90%</b>	<b>1.20%</b>	<b>1.05%</b>
41	Tiles	0.60%	0.89%	0.75%
42	Sanitary wares	0.20%	0.05%	0.12%
43	Other ceramics	0.10%	0.26%	0.18%
<b>50</b>	<b>Glass</b>	<b>0.90%</b>	<b>1.45%</b>	<b>1.18%</b>
51	Float glass	0.70%	0.68%	0.69%
52	Other glass products	0.20%	0.78%	0.49%
<b>60</b>	<b>Construction materials</b>	<b>2.70%</b>	<b>4.26%</b>	<b>3.48%</b>
61	Other con. met.	1.40%	2.97%	2.18%
62	Plywood	0.70%	0.31%	0.50%
63	Sheets	0.60%	0.99%	0.79%
<b>70</b>	<b>Chemicals</b>	<b>6.40%</b>	<b>6.74%</b>	<b>6.57%</b>
71	Polythylene	0.90%	2.03%	1.46%
72	Liquid Chemicals	1.40%	0.11%	0.75%
73	Nylon Products	0.20%	0.26%	0.23%
74	Plastic Products	0.20%	0.92%	0.56%
75	Other Chemical Products	3.10%	3.26%	3.18%
76	Resin	0.60%	0.17%	0.38%

Table A.6.3 Import Container Cargo Volume through Colombo Port in 1999 (2)

NO	ITEMS	Jan %	July %	Average
<b>80</b>	<b>Textile Industries</b>	<b>4.80%</b>	<b>7.38%</b>	<b>6.09%</b>
81	Fabric	2.70%	2.35%	2.53%
82	Polyester	0.90%	2.23%	1.56%
83	Garment Accessories	0.20%	0.89%	0.54%
84	Raw Cotton	0.10%	1.06%	0.58%
85	Yarn	0.60%	0.72%	0.66%
86	Textile Machinery	0.20%	0.04%	0.12%
87	Hangers	0.10%	0.10%	0.10%
<b>90</b>	<b>Papers &amp; paper boards</b>	<b>3.50%</b>	<b>6.54%</b>	<b>4.14%</b>
91	Paper products	3.40%	4.77%	2.58%
92	Paper boards	0.10%	1.76%	1.94%
<b>200</b>	<b>Industrial Machinery</b>	<b>2.60%</b>	<b>3.78%</b>	<b>1.59%</b>
201	Industrial Machinery	0.80%	0.57%	0.57%
202	Machine Parts	0.50%	0.34%	0.33%
203	Trectors	0.30%	0.15%	0.28%
204	Electrical parts	0.30%	0.27%	0.52%
205	Electrical appliiances	0.20%	0.74%	0.10%
206	Machine tools	0.20%	0.01%	0.18%
207	Eletronic parts	0.10%	0.16%	0.16%
208	Construction machinary	0.10%	0.23%	0.71%
209	Electronic equipment	0.10%	1.32%	0.49%
<b>300</b>	<b>Minerals</b>	<b>1.80%</b>	<b>0.87%</b>	<b>0.99%</b>
301	Carbon black	1.10%	0.19%	0.74%
302	Calsium	0.20%	0.38%	0.11%
303	Foundry coke	0.10%	0.02%	0.09%
304	Salt	0.10%	0.07%	0.09%
305	Other minerals	0.20%	0.09%	0.16%
306	Kaoline clay	0.10%	0.13%	0.05%
<b>400</b>	<b>Petroleum products</b>	<b>0.90%</b>	<b>0.01%</b>	<b>0.45%</b>
401	Petroleum products	0.80%	0.01%	0.74%
402	Lubricant	0.10%	0.00%	0.39%
<b>500</b>	<b>Feed</b>	<b>0.20%</b>	<b>0.69%</b>	<b>0.47%</b>
501	Animal feed	0.10%	0.69%	0.21%
502	Aquacultural feed	0.10%	0.00%	0.26%
<b>600</b>	<b>Rubber Products</b>	<b>0.50%</b>	<b>0.73%</b>	<b>3.25%</b>
601	Tyres	0.20%	0.31%	0.12%
602	Other rubber products	0.30%	0.42%	0.23%
<b>700</b>	<b>Other Industrial Materials</b>	<b>3.00%</b>	<b>6.00%</b>	<b>1.63%</b>
701	Railway equipment	0.30%	0.04%	0.18%
702	Office supplies	0.20%	0.16%	0.11%
703	Industrial equipment	0.10%	0.25%	2.79%
704	Tools	0.10%	0.05%	1.12%
705	Instrument	0.10%	0.03%	0.11%
706	Other Industrial Materials	2.20%	5.48%	1.25%

Table A.6.3 Import Container Cargo Volume through Colombo Port in 1999 (3)

NO	ITEMS	Jan %	July %	Average
<b>800</b>	<b>Vehicles</b>	<b>1.60%</b>	<b>2.15%</b>	<b>0.85%</b>
801	Auto rikshaws	0.30%	0.12%	0.22%
802	Bicycle parts	0.20%	0.30%	0.13%
803	Motor cycles	0.20%	0.09%	0.33%
804	Motor cycles spare parts	0.10%	0.14%	0.54%
805	Bicycles	0.10%	0.06%	0.47%
806	Other Vehicles	0.30%	0.47%	0.54%
807	Vehicle parts	0.40%	0.97%	0.23%
<b>900</b>	<b>Medical care</b>	<b>0.30%</b>	<b>0.84%</b>	<b>2.67%</b>
901	Phamaceuticals	0.20%	0.78%	50.10%
902	Medical supplies	0.10%	0.06%	0.08%
<b>0</b>	<b>Unknown</b>	<b>4.00%</b>	<b>5.05%</b>	<b>4.52%</b>
	<b>TOTAL</b>	<b>100.00%</b>	<b>100.00%</b>	<b>100.00%</b>

Table A.6.4 Short Sea Routes Ratio in Container Import through Colombo Port in Jan. 1999

Import cargo items	Item No.	Trade partners' areas		MT	(%)
Potatoes (5.51%)	101	Short-sea routes	Southeast Asia	8	0.07%
			Gulf countries	762	6.71%
			South Asia	10,169	89.61%
			sub-totoal	10,938	96.39%
		Total	11,348	100.00%	
Beans (4.04%)	102	Short-sea routes	Southeast Asia	665	7.98%
			Gulf countries	325	3.90%
			South Asia	1,681	20.18%
			sub-totoal	2,671	32.06%
		Total	8,331	100.00%	
Onions (2.92%)	103	Short-sea routes	Southeast Asia	24	0.39%
			Gulf countries	217	3.62%
			South Asia	4,561	75.93%
			sub-totoal	4,802	79.94%
		Total	6,007	100.00%	
Rice (2.78%)	104	Short-sea routes	Southeast Asia	144	2.51%
			South Asia	5,583	97.49%
			sub-totoal	5,727	100.00%
			Total	5,727	100.00%
		Fish (3.42%)	105	Short-sea routes	Southeast Asia
Gulf countries	37				0.52%
South Asia	2,105				29.87%
sub-totoal	5,102				72.41%
Total	7,046			100.00%	
Other foodstuffs (12.54%)	106-116	Short-sea routes	Southeast Asia	3,735	14.46%
			Gulf countries	4,298	16.63%
			South Asia	5,858	22.67%
			sub-totoal	13,891	53.76%
		Total	25,837	100.00%	
Metal products (5.83%)	31-34	Short-sea routes	Southeast Asia	2,326	19.34%
			Gulf countries	113	0.94%
			South Asia	5,195	43.21%
			sub-totoal	7,633	63.49%
		Total	12,023	100.00%	
Construction materials 2.64%	61-63	Short-sea routes	Southeast Asia	1,703	31.26%
			South Asia	891	16.36%
			sub-totoal	2,594	47.63%
			Total	5,446	100.00%
		Textile industrial matreials 7.09%	81-87	Short-sea routes	Southeast Asia
Gulf countries	232				1.59%
South Asia	2,214				15.15%
sub-totoal	6,370				43.60%
Total	14,610			100.00%	

Source: Analyzed by the study team using data from SLPA



Table A.6.5 Export Container Cargo Volume through Colombo Port in 1999 (1)

NO.	ITEMS	Jan %	July %	Average
<b>10</b>	<b>Plantation Products</b>	<b>42.36%</b>	<b>50.93%</b>	<b>46.65%</b>
11	black tea	23.55%	24.47%	24.01%
12	coconut coirs & coir products	9.68%	10.21%	9.95%
13	coconut products excl. coirs	6.03%	9.38%	7.71%
14	fresh coconuts	1.38%	1.58%	1.48%
15	spice	1.48%	2.10%	1.79%
16	nuts	0.24%	2.61%	1.43%
17	other plantation products	0.00%	0.58%	0.29%
<b>20</b>	<b>Rubber Industrial Products</b>	<b>10.76%</b>	<b>9.97%</b>	<b>10.37%</b>
21	tyres	4.38%	3.14%	3.76%
22	raw rubber	3.93%	2.15%	3.04%
23	other rubber products	2.45%	4.68%	3.57%
<b>30</b>	<b>Textile Industrial Goods</b>	<b>17.16%</b>	<b>15.76%</b>	<b>16.46%</b>
31	garment	11.68%	12.14%	11.91%
32	fabric	1.78%	1.42%	1.60%
33	yarn	3.31%	0.88%	2.10%
34	polyester	0.39%	1.32%	0.86%
<b>40</b>	<b>Other Light Industrial Goods</b>	<b>7.06%</b>	<b>4.58%</b>	<b>5.82%</b>
41	bags	3.23%	1.52%	2.38%
42	tents	1.27%	0.07%	0.67%
43	foot wears	0.59%	0.56%	0.58%
44	other finished goods	1.97%	2.43%	2.20%
<b>50</b>	<b>Metal</b>	<b>6.58%</b>	<b>3.41%</b>	<b>5.00%</b>
51	scrap iron	5.29%	2.55%	3.92%
52	iron and steel products	0.45%	0.64%	0.55%
53	other metal products	0.84%	0.22%	0.53%
<b>60</b>	<b>Minerals</b>	<b>3.66%</b>	<b>0.26%</b>	<b>1.96%</b>
61	silica quartts	1.74%	0.19%	0.97%
62	other minerals	1.92%	0.07%	1.00%
<b>70</b>	<b>Ceramics</b>	<b>2.60%</b>	<b>1.91%</b>	<b>2.26%</b>
71	tiles	1.80%	1.70%	1.75%
72	other ceramics	0.80%	0.21%	0.51%
<b>80</b>	<b>Foodstuffs</b>	<b>1.47%</b>	<b>0.98%</b>	<b>1.23%</b>
81	frozen fish	0.32%	0.00%	0.16%
82	other foodstuffs	1.15%	0.98%	1.07%
<b>90</b>	<b>Chemicals</b>	<b>1.80%</b>	<b>4.76%</b>	<b>3.28%</b>
91	polythylene	0.00%	0.21%	0.11%
92	nylon products	0.49%	1.50%	1.00%
93	plastic products	0.75%	0.99%	0.87%
94	other chemical products	0.56%	2.06%	1.31%
<b>100</b>	<b>Consumer Goods</b>	<b>1.05%</b>	<b>2.00%</b>	<b>1.53%</b>
101	household goods	0.34%	0.48%	0.41%
102	personal effects	0.13%	0.23%	0.18%
103	furniture	0.07%	0.04%	0.06%
104	household electric appliances	0.01%	0.01%	0.01%
105	miscellaneous	0.50%	1.24%	0.87%

Table A.6.5 Export Container Cargo Volume through Colombo Port in 1999 (2)

NO.	ITEMS	Jan %	July %	Average
<b>200</b>	<b>Paper and Paper Boards</b>	<b>1.65%</b>	<b>2.17%</b>	<b>1.91%</b>
201	waste paper	1.39%	1.72%	1.56%
202	paper products	0.26%	0.45%	0.36%
<b>300</b>	<b>Industrial Machinery</b>	<b>0.37%</b>	<b>0.84%</b>	<b>0.61%</b>
301	Industrial Machinery	0.31%	0.38%	0.35%
302	electronic parts	0.02%	0.02%	0.02%
303	construction machinery	0.04%	0.08%	0.06%
304	electronic equipment	0.00%	0.36%	0.18%
<b>400</b>	<b>Other Industrial Materials</b>	<b>0.77%</b>	<b>0.94%</b>	<b>0.86%</b>
401	industrial equipment	0.15%	0.40%	0.28%
402	instrument	0.29%	0.00%	0.15%
403	other industrial materials	0.33%	0.54%	0.44%
<b>500</b>	<b>Glass</b>	<b>0.21%</b>	<b>0.65%</b>	<b>0.43%</b>
501	glass products	0.21%	0.65%	0.43%
<b>600</b>	<b>Vehicles</b>	<b>0.53%</b>	<b>0.36%</b>	<b>0.45%</b>
601	motorcycles	0.01%	0.01%	0.01%
602	bicycles	0.15%	0.11%	0.13%
603	vehicles	0.01%	0.13%	0.07%
604	vehicle spare parts	0.36%	0.11%	0.24%
<b>700</b>	<b>Medical care</b>	<b>0.02%</b>	<b>0.04%</b>	<b>0.03%</b>
701	Pharmaceuticals	0.02%	0.04%	0.03%
<b>0</b>	<b>Unknown</b>	<b>1.95%</b>	<b>0.44%</b>	<b>1.20%</b>
	<b>Total</b>	<b>100.00%</b>	<b>100.00%</b>	<b>100.00%</b>

Table A.6.6 Short Sea Route Ratio in Container Export through Colombo in Jan, 1999

Cargo Item	No	Discharging Port	No	No	MT	(%)	Cargo Item	No	Discharging Port	No	No	MT	(%)		
black tea (23.55%)	11	Singapore	13	1	1,356	9.00%	metal (6.58%)	51-53	Singapore	13	1	98	2.30%		
		UAE	22	2	1,850	12.20%			India	31	3	2,632	62.30%		
		Saudi Arabia	23	2	1,156	7.60%			Netherlands	53	5	62	1.50%		
		Jordan	26	2	634	4.20%			Egypt	71	7	567	13.40%		
		India	32	3	449	3.00%			Israel	72	7	715	16.90%		
		U.K.	51	5	724	4.80%			All routes			4,227	96.40%		
		Germany	52	5	1,677	11.10%			Short-sea routes				66.50%		
		Netherlands	53	5	550	3.60%			minerals (3.66%)	61-62	Indonesia	11	1	82	3.50%
		Italy	54	5	2,248	14.90%					Singapore	13	1	562	23.90%
		Malta	55	5	1,788	11.80%					Pakistan	33	3	142	6.10%
		PRC	64	6	494	3.30%					Australia	41	4	44	1.90%
		Egypt	71	7	257	1.70%					U.K.	51	5	109	4.60%
		Israel	72	7	793	5.20%					Germany	52	5	515	21.50%
		All routes			15,131	92.40%					Japan	61	6	130	5.50%
		Short-sea routes				39.10%					Taiwan	63	6	134	5.70%
coconuts and its products 17.19%	12-14	Singapore	13	1	1,909	17.40%	USA	81			8	183	7.80%		
		UAE	22	2	1,128	10.30%	South Africa	91			9	164	7.00%		
		Pakistan	33	3	364	3.30%	All routes			2,349	87.90%				
		U.K.	51	5	1,784	16.30%	Short-sea routes				38.20%				
		Germany	52	5	399	3.60%	ceramics (2.60%)	71-72	Singapore	13	1	727	43.50%		
		Netherlands	53	5	816	7.40%			Malaysia	15	1	124	7.50%		
		France	591	5	197	1.80%			Kuwait	24	2	58	3.40%		
		Japan	61	6	338	3.10%			U.K.	51	5	60	3.60%		
		Korea	62	6	482	4.40%			Netherlands	53	5	60	3.60%		
		Taiwan	63	6	700	6.40%			Malta	55	5	98	5.90%		
		PRC	64	6	380	3.50%			Taiwan	63	6	119	7.10%		
		Lebanon	73	7	186	1.70%			USA	81	8	244	14.60%		
		USA	81	8	423	3.90%			All routes			1,669	89.30%		
		Portland	102	10	312	2.80%			Short-sea routes				59.50%		
		All routes			10,980	85.80%	other foodstuffs 1.47%	81-82	Singapore	13	1	124	13.10%		
Short-sea routes				36.30%	Oman	28			2	65	6.90%				
rubber and its products 10.76%	21-23	Singapore	13	1	1,012	14.60%			Maldives	35	3	129	13.60%		
		U.K.	51	5	394	5.70%			Netherlands	53	5	82	8.60%		
		Germany	52	5	590	8.50%			Italy	54	5	75	7.90%		
		Netherlands	53	5	831	12.00%			Japan	61	6	129	13.70%		
		Italy	54	5	471	6.80%			PRC	64	6	104	11.00%		
		Belgium	57	5	286	4.10%			USA	81	8	64	6.80%		
		Spain	58	5	423	6.10%			All routes			944	81.70%		
		PRC	64	6	378	5.50%			Short-sea routes				43.00%		
		USA	81	8	1,303	18.80%	others (9.97%)	91-701,0	Indonesia	11	1	233	4.30%		
		All routes			6,913	82.30%			Singapore	13	1	909	17.00%		
Short-sea routes				23.00%	UAE	22			2	162	3.00%				
textile industrial materials and products(17.16%)	31-34	Singapore	13	1	1,419	12.90%			India	31	3	665	12.40%		
		UAE	22	2	177	1.60%			Bangladesh	34	3	158	2.90%		
		U.K.	51	5	1,211	11.00%			Maldives	35	3	122	2.30%		
		Germany	52	5	443	4.00%			U.K.	51	5	325	6.10%		
		Netherlands	53	5	856	7.80%			Netherlands	53	5	721	13.40%		
		Italy	54	5	164	1.50%			Belgium	57	5	56	1.10%		
		Belgium	57	5	325	2.90%			Sweeden	592	5	191	3.60%		
		France	591	5	278	2.50%	Japan	61	6	98	1.80%				
		Korea	62	6	896	8.10%	Korea	62	6	132	2.50%				
		Taiwan	63	6	271	2.50%	PRC	64	6	86	1.60%				
USA	81	8	4,027	36.50%	Egypt	71	7	442	8.20%						
All routes			11,025	91.30%	Lebanon	73	7	204	3.80%						
Short-sea routes				16.50%	USA	81	8	530	9.90%						
lber light industrial products 7.06%	41-44	Singapore	13	1	610	13.40%	All routes			5,361	93.90%				
		UAE	22	2	88	1.90%	Short-sea routes				44.10%				
		U.K.	51	5	427	9.40%									
		Germany	52	5	274	6.00%									
		Netherlands	53	5	244	5.40%									
		Italy	54	5	127	2.80%									
		Malta	55	5	313	6.90%									
		France	591	5	176	3.90%									
		Japan	61	6	75	1.70%									
		Taiwan	63	6	287	6.30%									
		PRC	64	6	306	6.70%									
		USA	81	8	1,290	28.50%									
		All routes			4,534	93.00%									
		Short-sea routes				19.40%									

Source: Analyzed by the study team using data from SLPA

Table A.6.7 Wheat/Flour Handled at the Port in Sri Lanka

('000 M.T.)

Year	Wheat to Trincomalee	Conversion to Flour	Flour to Colombo	Flour to Galle	Flour total Col. & Galle
1989	734.9	477.7	227.8	41.4	269.2
1990	655.3	425.9	335.2	43.3	378.5
1991	669.4	435.1	239.0	32.7	271.7
1992	707.4	459.8	237.3	37.2	274.5
1993	830.3	539.7	238.9	51.4	290.3
1994	864.0	561.6	213.5	45.9	259.4
1995	1,061.0	689.7	188.0	47.0	235.0
1996	871.0	566.2	155.0	48.0	203.0
1997	779.0	506.4	135.0	42.0	177.0
1998	892.0	579.8	97.0	39.0	136.0
1999	861.0	559.7	84.0	34.0	118.0

Source : Port Statistics by SLPA

Table A.6.8 Sugar Statistics

	Production (M.T.)	Import ('000 M.T.)	Consumption (M.T.)	Per Capita Consumption (Kg)
1989	53,839	409	373,839	20.6
1990	57,165	287	362,165	21.3
1991	66,450	388	424,450	24.6
1992	59,974	372	429,974	24.7
1993	68,603	382	462,603	26.3
1994	72,274	343	563,274	31.5
1995	71,416	431	489,416	27.0
1996	70,114	385	451,114	24.6
1997	63,106	547	608,106	32.8
1998	61,549	333	505,549	26.9

Source : Central Bank, Economic and Social Statistics  
Port Statistics by SLPA for Import

Table A.6.9 Fertilizer Issue for Major Crops

('000 M.T.)

Year	Total Consumption	Tea	Rubber	Coconut	Paddy	Other Crops
1989	522.2	126.3	22.0	38.5	240.2	95.2
1990	437.1	134.1	22.2	23.6	161.2	96.0
1991	453.7	118.9	13.7	28.8	179.3	113.0
1992	475.8	110.2	13.1	34.3	207.8	110.4
1993	549.1	147.2	17.9	36.1	248.0	99.9
1994	532.6	126.4	17.2	31.2	269.7	88.1
1995	597.6	120.3	14.9	33.6	256.8	172.0
1996	524.2	154.0	16.6	39.1	237.5	77.0
1997	528.8	161.8	12.3	35.0	240.6	79.1
1998	561.4	182.3	15.7	37.7	251.9	73.8

Source : Central Bank, Economic and Social Statistics

Table A 6.10 Port Statistics for Cement

('000 M.T.)

Year	Port	Cement Bag	Cement	Clinker	Total
1989	Colombo	75.9	311.2		387.1
	Galle				0
	Trincomalee				0
	Total			0.0	387.1
1990	Colombo	121.4	304.0		425.4
	Galle				0.0
	Trincomalee				0.0
	Total			0.0	425.4
1991	Colombo	160.8	200.9		361.7
	Galle				0.0
	Trincomalee				0.0
	Total			0.0	361.7
1992	Colombo	88.3	321.8		410.1
	Galle			147.7	147.7
	Trincomalee				0.0
	Total			147.7	557.8
1993	Colombo	215.9	332.8	9.9	558.6
	Galle			174.6	174.6
	Trincomalee			204.0	204.0
	Total			388.5	937.2
1994	Colombo	223.2	403.1	55.4	681.7
	Galle	8.8		196.5	205.3
	Trincomalee			244.0	244.0
	Total			495.9	1,131.0
1995	Colombo	516.0	438.0	48.0	1,002.0
	Galle	4.0		168.0	172.0
	Trincomalee			224.0	224.0
	Total			440.0	1,398.0
1996	Colombo	326.0	535.0	10.0	871.0
	Galle			177.0	177.0
	Trincomalee			267.0	267.0
	Total			454.0	1,315.0
1997	Colombo	409.0	490.0	44.0	943.0
	Galle	28.0		101.0	129.0
	Trincomalee			326.0	326.0
	Total			471.0	1,398.0
1998	Colombo	376.0	515.0	105.0	996.0
	Galle	52.0		280.0	332.0
	Trincomalee			348.0	348.0
	Total			733.0	1,676.0
1999	Colombo	446.0	622.0	113.0	1,181.0
	Galle	119.0	87.0	174.0	380.0
	Trincomalee			437.0	437.0
	Total			724.0	1,998.0

Source : Port Statistics by SLPA

Table A.6.11 Port Statistics for Iron/Steel and M/Vehicle

Year	('000 M.T.)	
	Iron/Steel	M/Vehicle
1995	167	54
1996	216	43
1997	204	54
1998	251	77
1999	225	71

Source : Port Statistics by SLPA

Table A.6.12 Statistics for Maize Consumption and Number of Livestock

Year	Poultry	Maize
	('000 No.)	Consumption ('000 M.T.)
1993	9,261	113
1994	9,433	117
1995	9,573	115
1997	9,323	113
1998	9,866	156

Source : Central Bank, Economic and Social Statistics 1999

Food Balance Sheet 1992-1996 by Department of Census and Statistics

Table A.6.13 Paddy Statistics

Year	1		2	3	4
	Production		Yield per Hectare (Kgs./Ha.)	Import Rice ('000 M.T.)	Domestic Consumption Rice ('000 M.T.)
	Paddy ('000 M.T.)	Rice Equivalent ('000 M.T.)			
1988	2,477	1,512			1,670
1989	2,063	1,250	3,374	328	1,544
1990	2,538	1,552	3,453	201	1,724
1991	2,389	1,455	3,398	131	1,693
1992	2,340	1,423	3,428	236	1,673
1993	2,570	1,538	3,511	243	1,665
1994	2,684	1,627	3,363	218	1,697
1995	2,810	1,737	3,535	3	1,653
1996	2,061	1,239	3,513	206	1,670
1997	2,239	1,358	3,619	84	1,725
1998	2,692	1,615	3,678	81	

Source : Agricultural Statistics of Sri Lanka 1997 by Department of Census & statistics

Central Bank, Economic and Social Statistics

Port Statistics by SLPA for Import

Table A.6.14 Paddy Production in Southern Province

(M.T.)

Year	Galle	Matara	Hambantota	Subtotal	Sri Lanka	Share of South (%)
1984	67,049	77,973	116,034	261,056	2,413,588	10.82
1985	66,340	74,727	115,189	256,256	2,261,182	11.33
1986	70,436	75,047	124,264	269,747	2,388,197	11.30
1987	63,029	77,488	96,954	237,471	2,127,824	11.16
1988	79,178	75,318	147,612	302,108	2,476,613	12.20
1989	73,024	80,297	136,914	290,235	2,063,437	14.07
1990	77,000	93,000	120,000	290,000	2,538,000	11.43
1991	66,000	66,000	109,000	241,000	2,389,000	10.09
1992	59,900	83,300	119,500	262,700	2,339,700	11.23
1993	60,870	75,910	136,030	272,810	2,570,170	10.61
1994	70,800	84,740	143,440	298,980	2,683,690	11.14

Source: Paddy Statistics of Sri Lanka 1952-1996 by Dept. of Census &amp; Statistics



Table A.6.15 Production and Consumption for Other Crops in Sri Lanka  
( '000 M.T.)

	Pulses		Potatoes		Onion		Dry Fish	
	Product	Import	Product	Import	Product	Import	Product	Import
1988	48	37	88	0	59	12	5	31
		per capita(kg)	4.83		3.71		2.14	2.17
1989	41	45	83	1	77	23	6	20
		per capita(kg)	4.90		3.50		3.07	1.58
1990	53	48	87	0	61	31	11	38
		per capita(kg)	5.45		4.44		3.67	2.91
1991	51	58	67	0	56	49	13	44
		per capita(kg)	5.92		2.60		3.86	3.29
1992	42	56	79	0	82	36	14	44
		per capita(kg)	5.19		3.08		3.73	3.38
1993	42	49	78	0	73	34	16	65
		per capita(kg)	5.13		3.05		3.26	4.56
1994	39	94	79	8	83	50	16	48
		per capita(kg)	7.06		3.59		4.09	3.57
1995	35	69	82	12	78	78	12	48
		per capita(kg)	5.81		3.83		4.93	3.34
1996	34	62	101	26	63	94	10	48
		per capita(kg)	5.60		5.35		5.06	3.18
1997	29	83	66	108	74	122	12	52
		per capita(kg)	5.67		7.79		6.46	3.45

Source: Agricultural Statistics of Sri Lanka 1997 by Department of Census & Statistics

Table A.6.16 Future GDP Growth Rate

(%)

Regional Concordance	1996-2000		2001-2010	
	HG	LG	HG	LG
ASE	7.7	6.1	7.0	4.8
BRA	5.4	3.8	6.1	3.0
CHN	9.3	7.9	8.2	5.3
ECE	5.5	2.0	5.5	3.8
EUR	2.4	2.4	2.7	2.0
IDN	7.5	5.9	7.0	4.1
IND	6.5	4.4	7.2	4.3
JPN	3.3	3.3	2.9	2.0
LAT	4.3	3.0	5.9	3.2
MNA	5.0	2.1	7.1	2.2
NIS	3.5	1.1	6.0	4.2
POE	4.3	4.3	4.7	4.0
ROW	6.5	5.0	6.6	4.3
SSA	4.6	2.8	5.0	2.8
USA	2.2	2.2	2.7	2.1

Source : The World in 2020 by Organization for Economic Co-operation and Development (OECD)

Table A.6.17 Production of Rubber in the Southern Province

(M.T.)

Year	Galle	Matara	Hambantota	Southern Province	Share of South (%)	Sri Lanka
1995	9,134	4,343	19	13,496	12.8	105,717
1996	9,157	4,354	19	13,530	12.0	112,490
1997	9,156	4,251	18	13,425	12.7	105,782
1998	8,968	4,264	18	13,250	13.8	95,710

Source : Rubber Development Department

Table A.6.18 The Number/Ratio of Employee in the Southern Province  
(%)

District	Hinterland Ratio for Galle to Sri Lanka	Employee for Manufacturing Industries	Employee for Textile	
			Employee	Hinterland Ratio for Galle
Galle	100.0	6.4	4.0	4.0
Matara	100.0	3.4	1.5	1.5
Hambantota	100.0	1.8	1.3	1.3
Kalutara	30.0		4.5	1.4
Ratnapura	70.0		2.8	2.0
Badoulla	30.0		1.7	0.5
Monaragara	70.0		1.1	0.8
Total		11.6		11.5

Source : ARJUNA'S Atlas of Sri Lanka by Arjuna Consulting Co Ltd

Table A.6.19 Ratio of Containerization in Sri Lanka (Import)

Year	Container-lizable Cargo ('000 M.T.) ①	Container Cargo ('000 M.T.) ②	Container Ratio ②/①	Estimated Result (%)
1990	1,582.4	933.4	58.99	53.07
1991	1,603.9	972.9	60.66	58.96
1992	1,946.8	1,175.8	60.40	64.60
1993	2,149.9	1,399.9	65.11	69.86
1994	2,406.5	1,627.5	67.63	74.65
1995	2,170.0	1,847.0	85.12	78.91
1996	2,508.0	2,018.0	80.46	82.62
1997	2,796.0	2,450.0	87.63	85.79
1998	3,188.0	2,806.0	88.02	88.47
1999	3,151.0	2,866.0	90.96	90.69
2005	5,175.0	5,045.0		97.49
2010	7,818.0	7,758.0		99.23

Equation of the Logistic Curve

$$Y = 100 / \{1 + e^{(476.136 - 0.2393X)}\}$$

Table A.6.20 Ratio of Containerization in Sri Lanka (Export)

Year	Container- lizable Cargo (‘000 M.T.) ①	Container Cargo (‘000 M.T.) ②	Container Ratio ②/①	Estimated Result (%)
1990	1,194.7	821.4	68.75	68.33
1991	1,223.1	844.2	69.02	73.45
1992	1,127.8	886.8	78.63	78.01
1993	1,233.8	1,030.8	83.55	81.98
1994	1,440.7	1,193.2	82.82	85.37
1995	1,512.0	1,363.0	90.15	88.21
1996	1,609.0	1,436.0	89.25	90.56
1997	1,750.0	1,681.0	96.06	92.48
1998	1,831.0	1,706.0	93.17	94.04
1999	1,944.0	1,816.0	93.42	95.29
2005	2,690.0	2,657.0		98.79
2010	3,525.0	3,513.0		99.65

Equation of the Logistic Curve

$$Y = 100 / \{1 + e^{(494.040 - 0.2486X)}\}$$



Table A 13.1 Profit and Loss Account of SLPA (1995-1999)

	1999	1998	1997	1996	1995
	1000 Rs	1000 Rs	1000 Rs	1000 Rs	1000 Rs
<b>Revenue</b>					
Revenue from port activity	13,469,981	12,695,782	10,254,390	8,336,710	6,335,162
SAGT revenue	143,823				
Other revenue	1,474,752	942,095	719,979	670,705	484,410
	15,088,556	13,637,877	10,974,369	9,007,415	6,819,572
<b>Expenditure</b>					
Cost of operation	4,186,708	3,845,347	3,599,860	2,529,300	2,128,835
Cost of repair & maintenance	1,694,129	1,541,697	1,366,895	1,255,334	1,089,507
Cost of administration	2,875,738	2,016,250	1,914,172	1,508,857	1,337,464
Interest on foreign loan	1,008,379	965,385	650,410	596,373	495,178
B.T.T	0	220,762	664,744	561,464	409,111
Income tax	1,509,084	954,562	848,284	1,016,103	894,075
Provision for special levy	3,750,000	2,350,000	400,000	1,000,000	0
Provision for deemed dividend tax	700,626	443,190	0	0	0
	15,724,664	12,337,193	9,444,365	8,467,431	6,354,170
<b>Net Profit after Tax</b>	-636,108	1,300,684	1,530,004	539,984	465,402

Source: Sri Lanka Port Authority

Table A 13.2 Cash flow Statement of SLPA (1995-1999)

DESCRIPTION	1999		1998		1997		1996		1995	
	Rs.M.	Rs.M.	Rs.M.	Rs.M.	Rs.M.	Rs.M.	Rs.M.	Rs.M.	Rs.M.	Rs.M.
Cash & cash equivalents at beginning of period		7,464,379		4,245,850		2,169,403		2,506,665		626,227
<b>Cashflows from Operating Activities</b>										
Cash receipts from operations	13,270,304		12,614,606		9,994,377		8,086,184		6,774,054	
Cash paid to employees	(4,003,696)		(3,795,101)		(3,301,051)		(3,615,039)		(2,284,080)	
Materials & Electricity expenses	(778,821)		(566,183)		(835,423)		(658,341)		(582,685)	
Miscellaneous expenditure	(932,594)		(916,466)		(603,074)		(595,567)		(604,730)	
	7,556,193		7,336,856		5,254,829		3,217,177		3,292,559	
Income tax, Deemed dividend tax & T.tax	(3,964,809)		(1,044,450)		(1,425,747)		(1,652,268)		(628,786)	
Special levy to Treasury	(3,750,000)		(2,350,000)		(400,000)		(1,000,000)		0,000	
	(59,616)		3,942,406		3,429,082		564,909		2,763,793	
<b>Net cash from other activities</b>										
Interest received from Treasury bills, Call deposits & Fixed deposits	1,058,523		632,686		349,695		381,733		172,762	
Miscellaneous revenue	660,318		468,441		514,159		346,776		332,956	
Port Development Project expenditure	(137,673)		(323,147)		(327,526)		(773,095)		(1,096,741)	
Capital expenditure	(1,744,867)		(455,228)		(429,915)		(789,922)		(340,433)	
	(163,699)		322,754		106,413		(834,508)		(930,456)	
<b>Cashflows from financing activities</b>										
Reimbursement of Foreign Loan	(189,128)		(18,695)		(27,858)		0,000		215,684	
Exchange difference Yen To Rupees	(489,872)		(482,529)		(287,969)		0,000		75,635	
Net cashflow from Shipping Development Fund	(629,671)		(537,463)		(393,421)		11,274		29,256	
Foreign Loan - Interest	(21,482)		(7,944)		0,000		(30,762)		(150,693)	
Foreign Loan - Principal	(167,020)		0,000		(750,000)		(48,175)		(122,781)	
Net cash used in financing activities	(1,497,174)		(1,046,631)		(1,459,048)		(67,663)		47,101	
<b>Net decrease in cash &amp; cash equivalents</b>		(1,720,489)		3,218,529		2,076,447		(337,262)		1,880,438
Cash & cash equivalents at the end of the period		5,743,890		7,464,379		4,245,850		2,169,403		2,506,665

Source: Sri Lanka Port Authority

Table A 13.3 Balance Sheet of SLPA (1995-1999)

	1999	1998	1997	1996	1995
	1000 Rs	1000 Rs	1000 Rs	1000 Rs	1000 Rs
<b>Capital 資本</b>					
<i>Equity &amp; other capital</i>					
Equity capital	470,552	470,552	470,552	470,552	470,552
Other capital	7,120,828	7,120,828	7,120,828	7,120,828	7,120,828
	-909,093				
	6,682,287	7,591,380	7,591,380	7,591,380	7,591,380
<i>Reserves &amp; provision</i>					
Capital reserve	1,402,022	994,564	973,344	973,344	973,436
Port development reserve	557,024	557,024	557,024	557,024	557,024
Loan redemption reserve	6,473,901	6,473,901	4,879,026	3,619,575	2,802,598
Foreign exchange fluctuation A/C	0	718,923	727,588	567,664	272,125
Other Reserves & provisions	1,125	1,125	1,125	2,638	2,638
	8,434,072	8,745,537	7,138,107	5,720,245	4,607,821
<b>Sub-total</b>	<b>15,116,359</b>	<b>16,336,917</b>	<b>14,729,487</b>	<b>13,311,625</b>	<b>12,199,201</b>
<b>Liability 債務</b>					
<i>Long-term liability</i>					
Port development loans(Japanese loan)	40,334,445	33,938,978	27,255,018	15,262,592	12,885,597
Other foreign loans	231,162	91,575	109,890	128,205	146,520
	40,565,607	34,030,553	27,364,908	15,390,797	13,032,117
<i>Current liability</i>					
Creditors and accrued charges	2,480,914	2,362,672	2,219,749	2,288,864	1,056,013
Deposit & advanced payment	1,029,386	882,549	793,253	858,290	1,521,727
Shipping development fund & other funds	1,407,528	1,645,385	1,631,017	1,633,418	1,465,992
Provision for income tax	186,283	1,385,108	1,101,467	916,967	507,112
Provision for deemed dividend tax		0			551,721
Provisions for claims	7,243	8,903	6,515	18,538	10,292
Bank balance O/D	50,980	25,959	61,482	132,517	26,688
	5,162,334	6,310,576	5,813,483	5,848,594	5,139,545
<b>Sub-total</b>	<b>45,727,941</b>	<b>40,341,129</b>	<b>33,178,391</b>	<b>21,239,391</b>	<b>18,171,662</b>
<b>Total</b>	<b>60,844,300</b>	<b>56,678,046</b>	<b>47,907,878</b>	<b>34,551,016</b>	<b>30,370,863</b>
<b>Assets 資產</b>					
<i>Fixed Assets</i>					
Property,Operational craft,Plant	40,562,438	28,697,375	27,558,368	20,174,335	19,899,852
Capital work in progress	1,742,441	15,450,325	11,099,951	7,759,067	4,183,862
	42,304,879	44,147,700	38,658,319	27,933,402	24,083,714
<i>Investment</i>					
Investment in company share	360,904	20,925	20,925	20,925	20,925
Long-term investment	783,689	780,491	781,116	32,918	29,199
	1,144,593	801,416	802,041	53,843	50,124
<i>Non-current assets</i>					
Deferred revenue expenditure	5,549,696	84,670	87,577	98,524	0
<i>Current assets</i>					
Goods in stock	1,019,756	949,959	796,459	625,725	425,014
Goods in transit	612,699	291,004	549,094	604,297	493,324
Net trade debtors & accrued revenue	923,146	846,139	810,019	1,105,825	874,973
Non trade debtors & advance payment	1,224,981	850,440	803,534	658,666	727,323
Over payment on re-scheduling of Japanese loans		0	0	157,670	336,079
Loans & advance to employees	1,179,023	1,152,108	1,050,863	961,769	804,785
Investments in treasury bills, fixed/call deposits	5,572,114	7,393,750	4,212,377	2,161,542	2,432,993
Deposits & other reseivables	778,055	64,271	42,640	49,375	32,174
Foreign Currency cash A/C	312,600				
Cash in transit, cash at bank & in hand	222,757	96,588	94,955	140,378	100,360
	11,845,131	11,644,259	8,359,941	6,465,247	6,227,025
<b>Total</b>	<b>60,844,299</b>	<b>56,678,045</b>	<b>47,907,878</b>	<b>34,551,016</b>	<b>30,360,863</b>

Source: Sri Lanka Port Authority

Table A 13.4 Financial Index of SLPA(1995-1999)

(Unit:1000Rs)

	1995	1996	1997	1998	1999	
Net Profit before Tax (a)	1,854,952	3,052,459	3,428,697	6,013,820	6,331,981	
Depreciation (b)	617,071	1,000,223	2,119,035	2,103,807	2,540,529	
Principal of Long Term Loan (C)	122,781	48,175	393,421	537,463	629,671	
Interest of Long term Loan (d)	150,693	30,762	287,969	482,529	489,872	
Debt Service coverage Ratio(a+b/c+d)	9.0	51.3	8.1	8.0	7.9	more than 1.0
Current Assets (e)	6,237,024	6,465,247	8,359,940	11,644,258	11,845,131	
Current Liability (f)	5,139,545	5,848,595	5,813,483	6,310,576	5,162,334	
Working Capital (e/f)	1.21	1.11	1.44	1.85	2.29	
Cost of Operation	2,128,835	2,629,300	3,599,860	3,840,150	4,186,708	
Cost of Repair and Maintenance	1,089,507	1,255,334	1,366,895	1,538,133	1,694,129	
Cost of Administration	1,337,164	1,508,857	1,914,172	2,025,011	2,875,738	
Operation Expense (g)	4,555,506	5,393,491	6,880,927	7,403,294	8,756,575	
Operation Expense before Depreciation(h) g-b	3,938,435	4,393,268	4,761,892	5,299,487	6,216,046	
Operation Revenue (i)	6,819,571	9,007,414	10,974,368	13,637,877	15,088,556	
Working Ratio (h/i)	57.8%	48.8%	43.4%	38.9%	41.2%	less than 50-60%
Operating Ratio(g/i)	66.8%	59.9%	62.7%	54.3%	58.0%	less than 70-75%
Fixed Assets (j)	24,133,838	27,987,244	39,460,361	44,949,116	43,449,471	
Rate of Return on Net Fixed Assets (a/j)	7.69%	10.91%	8.69%	13.38%	14.57%	more than 7.0%

Source: Sri Lanka Port Authority



Table A 13.5 Loan Repayment Schedule of the project

	1	2	3	4	5	6	7	8	9	10	11	12	13	14	15	16	17
<b>Total</b>	120,851,250	1,943,418,500	3,028,779,250	2,232,885,000	1,678,373,750	366,480,000											
<b>Foreign portion</b>	43,283,750	647,805,500	1,276,259,750	754,295,000	543,251,250	122,160,000											
<b>Total Cost</b>	13,548,381,000	2,591,222,000	5,105,039,000	3,017,180,000	2,173,169,000	488,040,000											
<b>Principal</b>																	
<b>Foreign loan</b>	120,851,250	1,943,418,500	3,028,779,250	2,232,885,000	1,678,373,750	366,480,000											
<b>Domestic loan</b>	0	0	0	0	0	0	0	0	0	0	0	0	0	0	0	0	0
<b>Balance</b>	120,851,250	2,073,267,750	5,902,047,000	8,184,932,000	9,794,805,750	10,161,285,750	10,161,285,750	10,161,285,750	10,161,285,750	10,161,285,750	10,161,285,750	10,161,285,750	10,161,285,750	10,161,285,750	10,161,285,750	10,161,285,750	10,161,285,750
<b>Domestic Loan</b>	0	0	0	0	0	0	0	0	0	0	0	0	0	0	0	0	0
<b>Interest</b>	0	0	0	0	0	0	0	0	0	0	0	0	0	0	0	0	0
<b>JBIC Loan</b>	0	0	0	0	0	0	0	0	0	0	0	0	0	0	0	0	0
<b>Domestic Loan</b>	0	0	0	0	0	0	0	0	0	0	0	0	0	0	0	0	0
<b>Total</b>	120,851,250	1,943,418,500	3,028,779,250	2,232,885,000	1,678,373,750	366,480,000											
<b>Total principal</b>	0	0	0	0	0	0	0	0	0	0	0	0	0	0	0	0	0
<b>Interest</b>	0	0	0	0	0	0	0	0	0	0	0	0	0	0	0	0	0
<b>JBIC Loan</b>	0	0	0	0	0	0	0	0	0	0	0	0	0	0	0	0	0
<b>Domestic Loan</b>	0	0	0	0	0	0	0	0	0	0	0	0	0	0	0	0	0
<b>Total</b>	0	0	0	0	0	0	0	0	0	0	0	0	0	0	0	0	0
<b>JBIC Loan</b>	0	0	0	0	0	0	0	0	0	0	0	0	0	0	0	0	0
<b>Domestic Loan</b>	0	0	0	0	0	0	0	0	0	0	0	0	0	0	0	0	0
<b>Total</b>	0	0	0	0	0	0	0	0	0	0	0	0	0	0	0	0	0

Table A 13.5 Loan Repayment Schedule of the project

	18	19	20	21	22	23	24	25	26	27	28	29	30	31	32	33	34	35
Foreign portion																		
Domestic portion																		
Total Cost																		
Principal																		
Foreign loan																		
1	6,492,563	6,492,563	6,492,563	6,492,563	6,492,563	6,492,563	6,492,563	6,492,563	6,492,563	6,492,563	6,492,563	6,492,563	6,492,563	6,492,563	6,492,563	6,492,563	6,492,563	6,492,563
2	97,170,825	97,170,825	97,170,825	97,170,825	97,170,825	97,170,825	97,170,825	97,170,825	97,170,825	97,170,825	97,170,825	97,170,825	97,170,825	97,170,825	97,170,825	97,170,825	97,170,825	97,170,825
3	191,438,963	191,438,963	191,438,963	191,438,963	191,438,963	191,438,963	191,438,963	191,438,963	191,438,963	191,438,963	191,438,963	191,438,963	191,438,963	191,438,963	191,438,963	191,438,963	191,438,963	191,438,963
4	113,144,250	113,144,250	113,144,250	113,144,250	113,144,250	113,144,250	113,144,250	113,144,250	113,144,250	113,144,250	113,144,250	113,144,250	113,144,250	113,144,250	113,144,250	113,144,250	113,144,250	113,144,250
5	81,493,688	81,493,688	81,493,688	81,493,688	81,493,688	81,493,688	81,493,688	81,493,688	81,493,688	81,493,688	81,493,688	81,493,688	81,493,688	81,493,688	81,493,688	81,493,688	81,493,688	81,493,688
6	18,324,000	18,324,000	18,324,000	18,324,000	18,324,000	18,324,000	18,324,000	18,324,000	18,324,000	18,324,000	18,324,000	18,324,000	18,324,000	18,324,000	18,324,000	18,324,000	18,324,000	18,324,000
Total	508,064,288	508,064,288	508,064,288	508,064,288	508,064,288	508,064,288	508,064,288	508,064,288	508,064,288	508,064,288	508,064,288	508,064,288	508,064,288	508,064,288	508,064,288	508,064,288	508,064,288	508,064,288
Balance	7,933,847,700	8,825,783,413	6,317,719,125	5,609,854,838	5,391,590,550	4,793,526,263	4,283,461,975	3,777,397,688	3,269,333,400	2,761,269,113	2,253,204,825	1,745,140,538	1,237,076,250	735,504,525	351,103,525	118,141,688	18,324,000	0
Domestic Loan																		
1																		
2																		
3																		
4																		
5																		
6																		
Total																		
Balance	78,761,125	12,216,000	0	0	0	0	0	0	0	0	0	0	0	0	0	0	0	0
Total Principal	508,064,288	574,609,413	500,290,288	508,064,288	508,064,288	508,064,288	508,064,288	508,064,288	508,064,288	508,064,288	508,064,288	508,064,288	508,064,288	501,571,725	404,400,900	212,981,938	39,817,688	18,324,000
Interest																		
JBIC Loan	172,522,864	161,344,649	150,167,235	138,999,821	127,812,406	116,634,952	105,457,576	94,280,163	83,102,748	71,925,335	60,747,920	49,570,506	38,393,092	27,215,678	16,181,100	7,284,280	2,598,117	403,128
Domestic Loan	16,955,181	5,907,064	316,200	0	0	0	0	0	0	0	0	0	0	0	0	0	0	0
Total Interest	189,077,245	167,251,714	151,068,435	138,999,821	127,812,406	116,634,952	105,457,576	94,280,163	83,102,748	71,925,335	60,747,920	49,570,506	38,393,092	27,215,678	16,181,100	7,284,280	2,598,117	403,128
Total	690,588,351	695,408,937	658,231,523	647,054,109	635,876,694	624,699,230	613,521,865	602,344,451	591,167,037	579,989,822	568,812,208	557,634,794	546,457,378	538,787,403	528,246,217	520,246,217	510,416,805	18,727,128
JBIC Loan	158,528,806	72,482,209	13,132,200	0	0	0	0	0	0	0	0	0	0	0	0	0	0	0
Domestic Loan	835,116,157	741,861,148	671,363,723	647,054,109	635,876,694	624,699,230	613,521,865	602,344,451	591,167,037	579,989,822	568,812,208	557,634,794	546,457,373	538,787,403	528,246,217	520,246,217	510,416,805	18,727,128



Table A13.7 FIRR(Revenue-10%)

Cost 1.0

Revenue 0.9

1 Construction Costs		Rs	12,812,961,820
(1) Civil		Rs	3,551,388,058 (Base of maintenance calculation)
(2) Procurement		Rs	735,420,000
Gantry Crane			
VTMS			
WOPF			
Forklift			
(3) Dredging			
(4) Total			490,280,000
2 Maintenance		Rs	245,140,000
(1) Civil (1%)		Rs	332,969,124
(2) Procurement (4%)		Rs	13,548,381,820
(3) Dredging			
3 Re-investment		Rs	35,513,981
(1) Gantry Crane		Rs	29,416,800
(2) Forklift		Rs	0
(3) Total			
4 Management		Unit	84,930,781 Sub-total (1)+(2)
Personnel	Number of persons	Rs	82,418,000
		Rs	202,000
6 Cost and Revenue		Revenue	0.9

13,548,381,820 Sub-total (1)+(2)

84,930,781 Sub-total (1)+(2)

490,280,000 20 years renewal

245,140,000 10 years renewal

735,420,000

Administration cost

20%

82,418,000

Financial Analysis

Year	Revenue			Cost			Expenses			Total	Difference		Net Present Value(NPV)	
	Revenue	Investment	Total	Maintenance Costs	Management Costs	Re-Investment	Revenue	- Cost	Revenue		- Cost	Revenue	- Cost	
1		0	173,135,250											
2		0	2,591,222,308											
3		0	5,105,038,923											
4		0	3,017,179,898											
5		0	2,173,165,435											
6		0	488,640,005											
7		699,206,400	699,206,400	64,930,781	82,416,000									
8		778,180,500	778,180,500	64,930,781	82,416,000									
9		855,680,400	855,680,400	64,930,781	82,416,000									
10		936,279,900	936,279,900	64,930,781	82,416,000									
11		1,015,254,000	1,015,254,000	64,930,781	82,416,000									
12		1,183,583,700	1,183,583,700	64,930,781	82,416,000									
13		1,183,583,700	1,183,583,700	64,930,781	82,416,000									
14		1,183,583,700	1,183,583,700	64,930,781	82,416,000									
15		1,183,583,700	1,183,583,700	64,930,781	82,416,000									
16		1,183,583,700	1,183,583,700	64,930,781	82,416,000									
17		1,183,583,700	1,183,583,700	64,930,781	82,416,000									
18		1,183,583,700	1,183,583,700	64,930,781	82,416,000									
19		1,183,583,700	1,183,583,700	64,930,781	82,416,000									
20		1,183,583,700	1,183,583,700	64,930,781	82,416,000									
21		1,183,583,700	1,183,583,700	64,930,781	82,416,000									
22		1,183,583,700	1,183,583,700	64,930,781	82,416,000									
23		1,183,583,700	1,183,583,700	64,930,781	82,416,000									
24		1,183,583,700	1,183,583,700	64,930,781	82,416,000									
25		1,183,583,700	1,183,583,700	64,930,781	82,416,000									
26		1,183,583,700	1,183,583,700	64,930,781	82,416,000									
27		1,183,583,700	1,183,583,700	64,930,781	82,416,000									
28		1,183,583,700	1,183,583,700	64,930,781	82,416,000									
29		1,183,583,700	1,183,583,700	64,930,781	82,416,000									
30		1,183,583,700	1,183,583,700	64,930,781	82,416,000									
31		1,183,583,700	1,183,583,700	64,930,781	82,416,000									
32		1,183,583,700	1,183,583,700	64,930,781	82,416,000									
33		1,183,583,700	1,183,583,700	64,930,781	82,416,000									
34		1,183,583,700	1,183,583,700	64,930,781	82,416,000									
35		1,183,583,700	1,183,583,700	64,930,781	82,416,000									
Total		32,690,610,000	32,690,610,000	1,882,992,637	2,390,064,000	980,560,000	18,801,998,457	13,888,611,543	14,606,971,723	14,606,971,723	0			

FIRR = 4.27%

3.53%













JICA