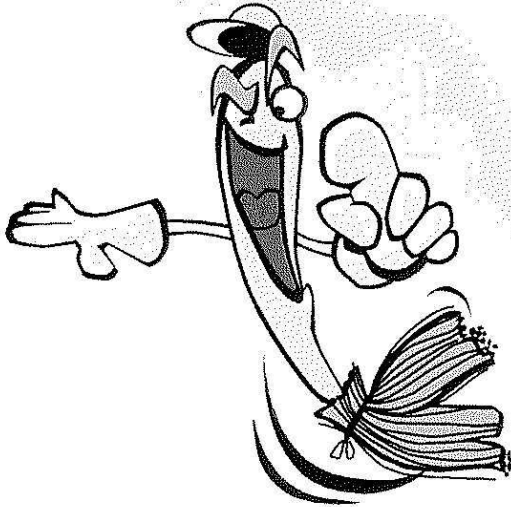


What we can do?

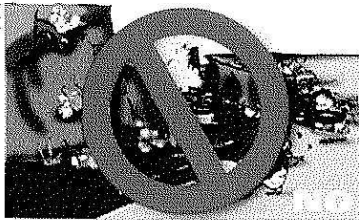
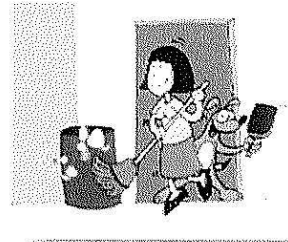


Due to the absence of hygienic measures (basic hygienic actions) in the habitat and the environment, diseases prevail, especially diarrhea, and contribute to the increase of infantile mortality.

Appropriate waste management and regular cleaning of houses and waste collection points contribute to the improvement of public health and quality of life.

There are many ways you can help to improve hygiene conditions and to make a clean and sound city.

- 1** Let's keep our houses clean inside, in the front and around them.



- Don't throw garbage in quebradas, ravines, watercourses, rivers and drainage. **2**

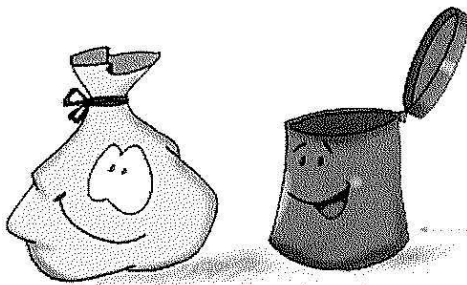
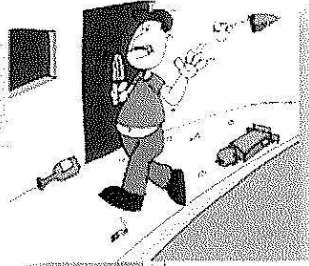
- 3** In places where waste is not collected, let's throw garbage into deep pits and put soil on it.



- Don't burn garbage such as plastic and rubber, which produce a lot of smoke and fumes. **4**

What we can do? Appropriate handling of waste

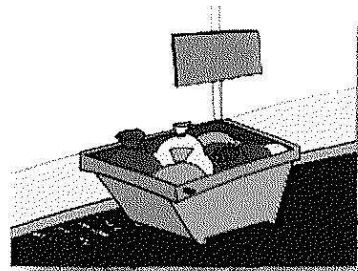
- 5** Let's throw litter into litter boxes.
Do not throw on the sidewalks
and in the streets.



- Let's discharge waste in tied plastic
bags or in containers with a lid.

6

- 7** Let's discharge waste at a collection
point near our house only at the
collection date and time, before the
truck comes.



R Reduce/Reuse/Recycle + Change of Attitude
=
Improvement of Socio-Environmental Quality

- Let's **Reduce** the amount of waste discharged by avoiding buying goods, which produce much waste after being consumed (mainly plastics).
- Let's **Reuse** things before considering them as "waste".
- Let's **Recycle** through separate collection and transformation of used materials in new products.

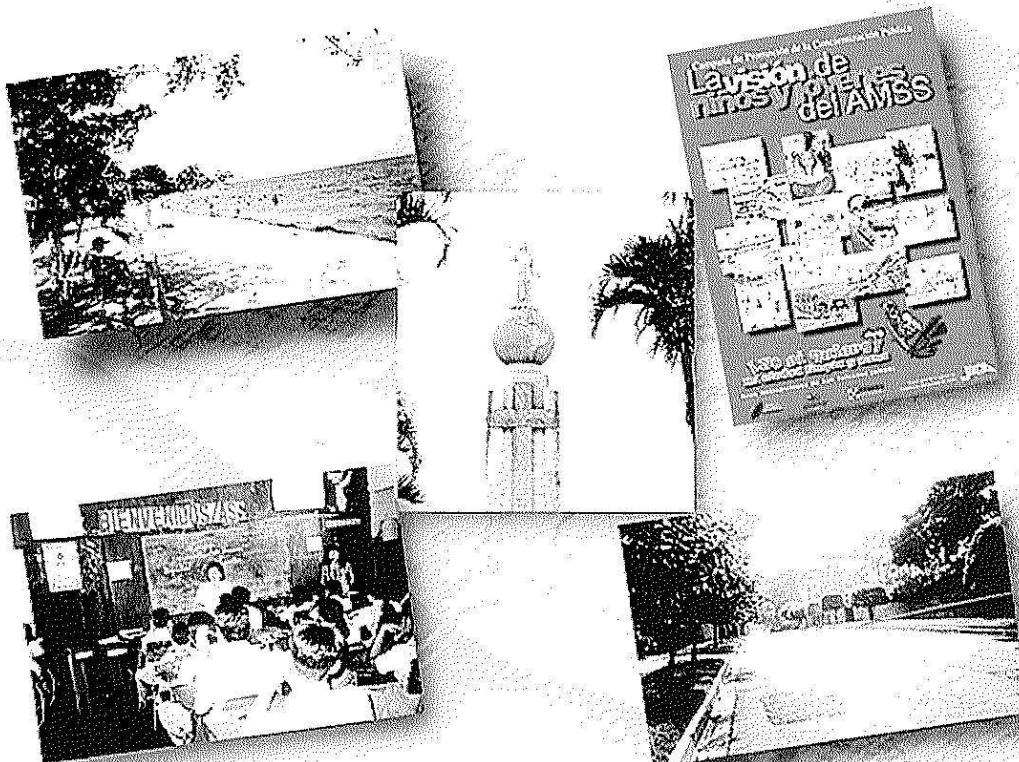
I want it! a clean and sound city

Let's think:

- The quality of the environment is important in the quality of the human life.
- The main destroyer of the environment is man, and it affects his health.
- Our environmental behavior has a direct relationship with environmental health and hygiene.

And let's build roads towards a better environment

In order to build these roads, the cooperation of all the actors of the society -rulers, professionals, students, manufacturers, businessmen, members of NGOs and of the public sector in general- is necessary.



Always keeping in mind... our individual responsibility

Inadequate waste management can have serious consequences on the public health. Appropriate waste management is therefore a crucial component for the protection of the environmental health.

Health and welfare at home, at school and in the work place, and the socio/environmental consequences are
THE RESPONSIBILITY AND INTEREST OF EVERYONE.