

Data B---Part 1

Institutions survey

**- Private companies and public
institutions**

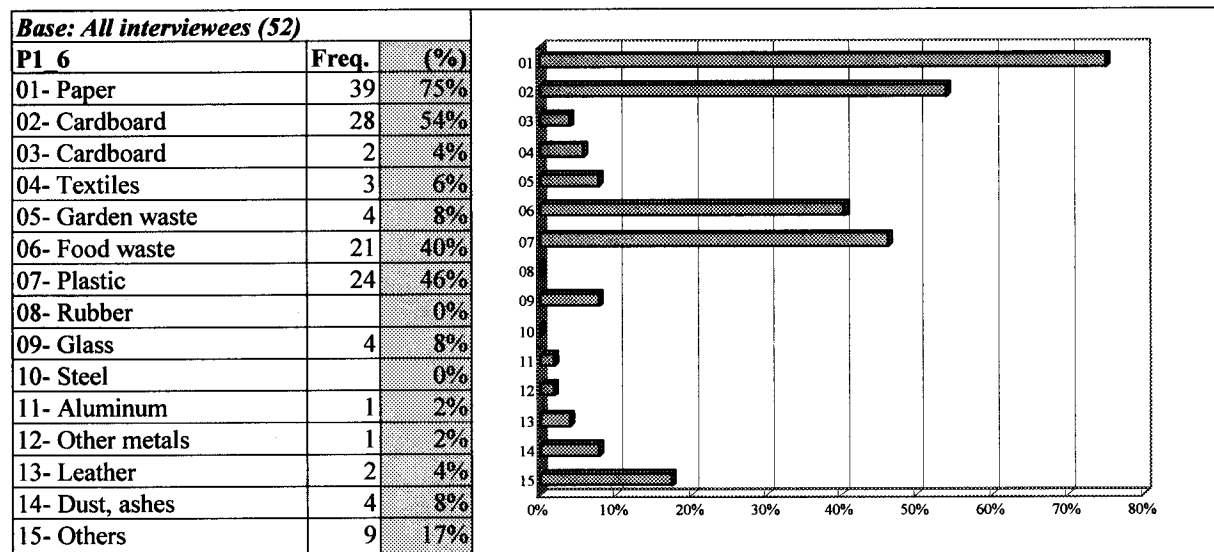
**The Study on Regional Solid Waste Management for
San Salvador Metropolitan Area in the Republic of El Salvador
Questionnaire for Public Opinion Survey
(Institutions-private companies and public institutions)**

Interviewer: _____ Date: _____
Municipality: _____ Segment: _____
Name of the institution: _____
Enterprise/office/business address: _____
Name of person giving the information: _____

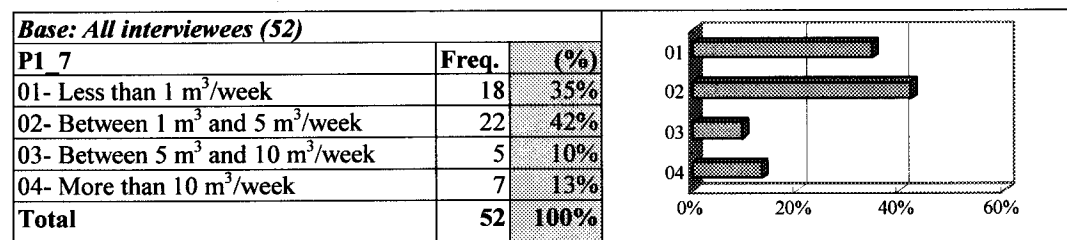
1. GENERAL QUESTIONS

Type of business	Municipality								Total	%
	01SS	02MJ	07ST	08AC	09SY	10IL	11SMT	12AP		
60- Government/Private	7	1			1				9	17%
61- Shops	23	2	2	1	3	2	1	1	35	67%
62- Municipal Market	1		1					1	3	6%
63- Industry								1	1	2%
64- Restaurant and hotel	3		1						4	8%
Total	34	3	4	1	4	2	1	3	52	100%

P1_6. What kind of wastes are mainly generated in your institution? *[mark everything the interviewee says]*



P1_7. How many cubic meters of waste are approximately generated per week, including recycled waste?



2. WASTE STORAGE, DISCHARGE, COLLECTION AND DISPOSAL

P2_1. Where do you store your waste?

<i>Base: All interviewees (52)</i>		
P2_1	Freq.	(%)
01- In the establishment	42	81%
02- Outside the establishment	10	19%
Total	52	100%

(1) In the establishment

(2) Outside the establishment

P2_2. What type of container do you use for storing waste? [mark everything the interviewee mentions]

<i>Base: All interviewees (52)</i>		
P2_2	Freq.	(%)
01- Plastic bag	25	48%
02- Paper bags	1	2%
03- Carton boxes	11	21%
04- Metal/plastic/wood containers	19	37%
05- Basket		0%
06- Others	6	12%
Total	52	100%

P2_3. Who collects your waste?

<i>Base: All interviewees (52)</i>		
P2_3	Freq.	(%)
01- Municipal waste collector [next]	33	63%
02- Private collector [next]	4	8%
03- Both municipal and private waste collector [next]	4	8%
04- We take it to a specific place	8	15%
07- Others	3	6%
Total	52	100%

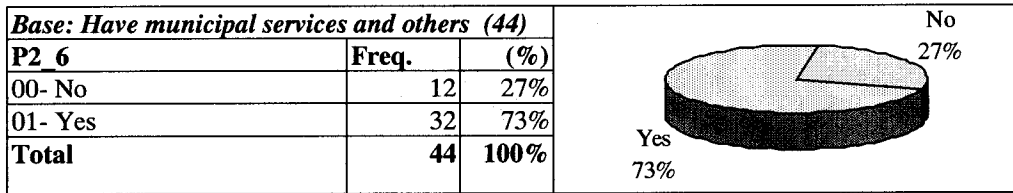
P2_4. How is your waste collected?

<i>Base: Have municipal services and others (44)</i>		
P2_4	Freq	(%)
01- Waste collection workers come into establishment to fetch the waste	10	23%
02- We put waste in front of our institution	24	55%
03- We carry waste to a certain waste collection point	6	14%
04- We directly carry waste to a waste collection truck	4	9%
Total	44	100%

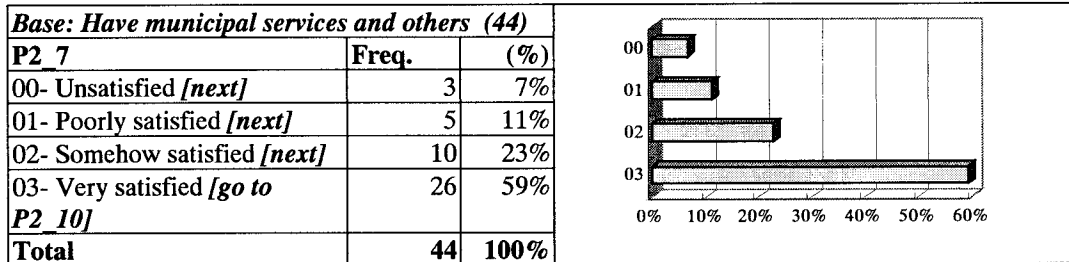
P2_5. How often is your waste collected?

<i>Base: Have municipal services and others (44)</i>		
P2_5	Freq.	(%)
01- Once a week	3	7%
02- Twice a week	6	14%
03- Three times a week	17	39%
04- More than three times	18	41%
Total	44	100%

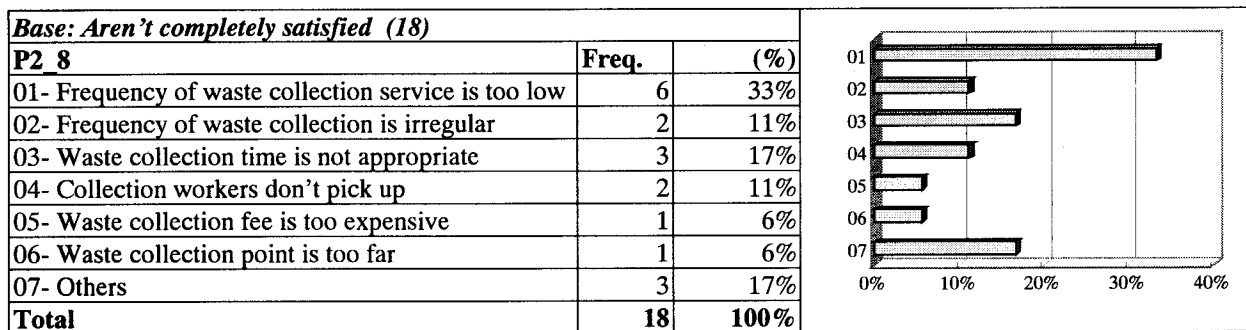
P2_6. Is the waste collection service done at a fixed time of the day?



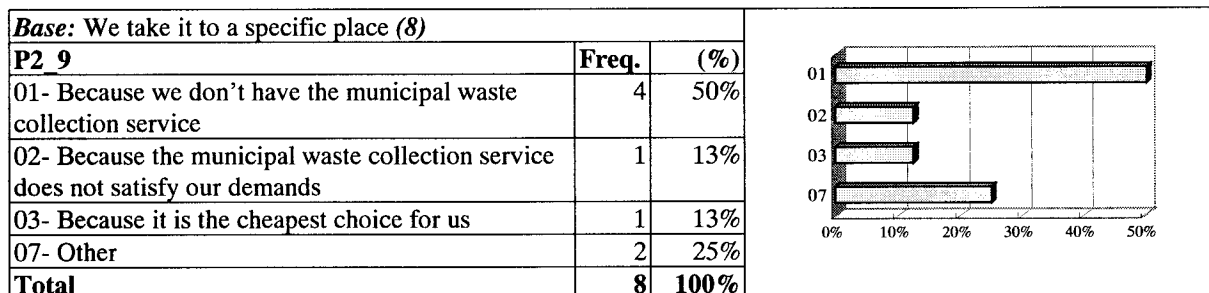
P2_7. How satisfied are you with the collection service?



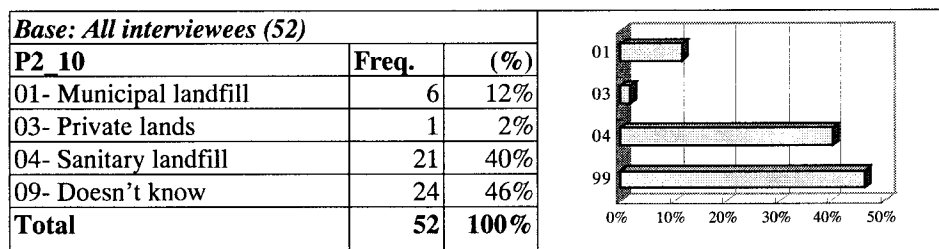
P2_8. Why aren't you completely satisfied with the collection service? [in any case go to P2_10]



P2_9. Why do you directly carry your waste?

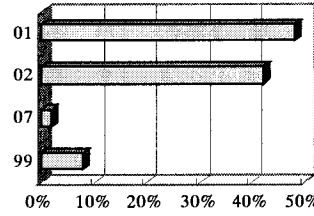


P2_10. Do you know where your waste is disposed of?



P2_11. What do you think that waste collection service should be in the future (about in 10years)

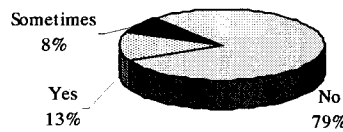
<i>Base: All interviewees (52)</i>		
P2_11	Freq.	(%)
01- Municipality should continue executing the service	25	48%
02- The waste collection service should be privatized	22	42%
07- Other	1	2%
09- N/A	4	8%
Total	52	100%



3. RECYCLING AND WASTE REDUCTION

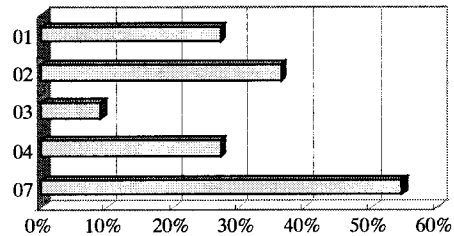
P3_1. Do you separate your waste so that it can be collected for recycling?

<i>Base: All interviewees (52)</i>		
P3_1	Freq.	(%)
00- No	41	79%
01- Yes	7	13%
02- Sometimes	4	8%
Total	52	100%



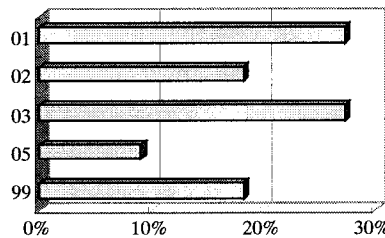
P3_2. Why do you separate waste? [mark everything the interviewee mentions]

<i>Base: Separate waste for recycling (11)</i>		
P3_2	Freq.	(%)
01- For selling it to manufacturers	3	27%
02- For selling it to local peddlers	4	36%
03- For reducing waste volume to minimize collection fee	1	9%
04- For reducing waste volume to minimize adverse impact on environment	3	27%
07- Others	6	55%

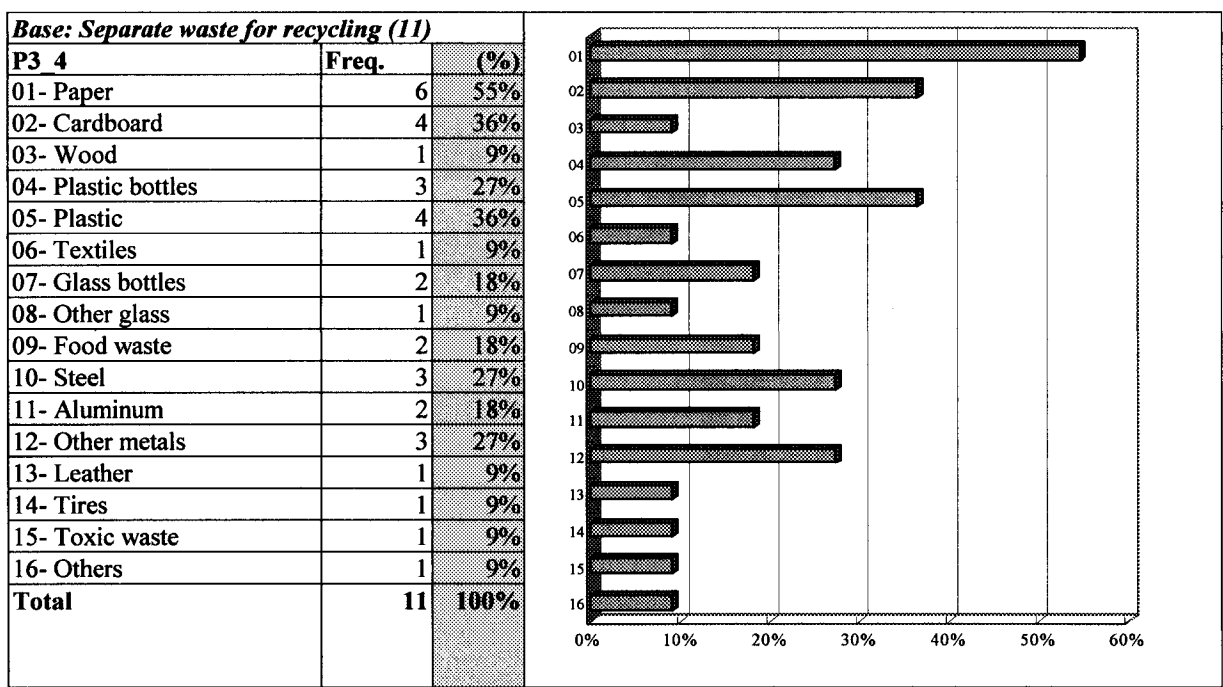


P3_3. How many cubic meters of waste do you normally recycle per week?

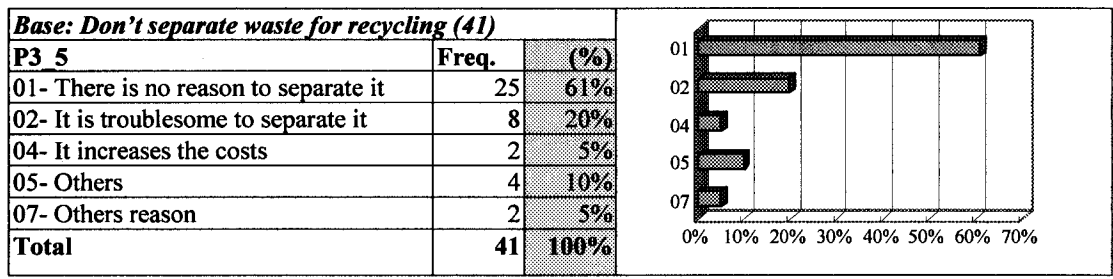
<i>Base: Separate waste for recycling (11)</i>		
P3_3	Freq.	(%)
01- Less than 0.5 m ³ /per week	3	27%
02- Between 0.5 m ³ and 1 m ³ /per week	2	18%
03- Between 1 m ³ and 5 m ³ /per week	3	27%
05- More than 10 m ³ /per week	1	9%
09- N/A	2	18%
Total	11	100%



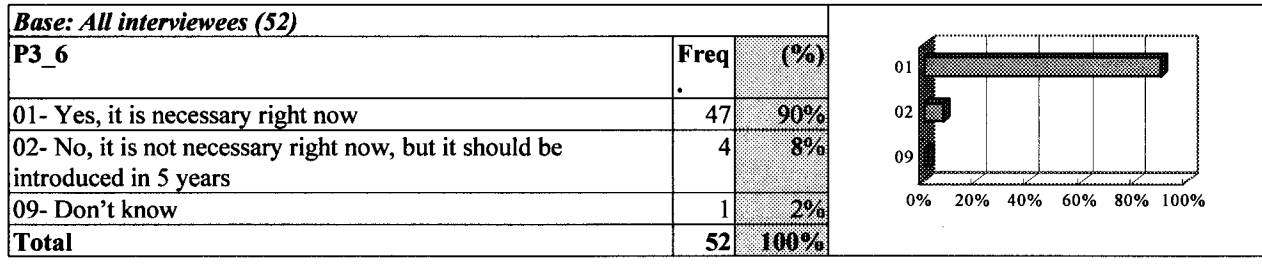
P3_4. Which type of waste do you separate? [mark everything the interviewee mentions] [in any case go to P3_6]



P3_5. Why you do not separate your waste?

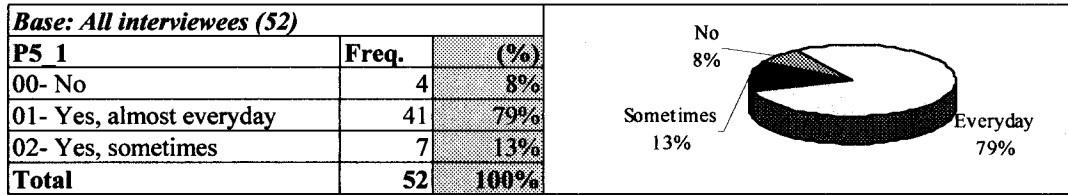


P3_6. Do you think recycling is necessary for San Salvador Metropolitan Area? [read options]

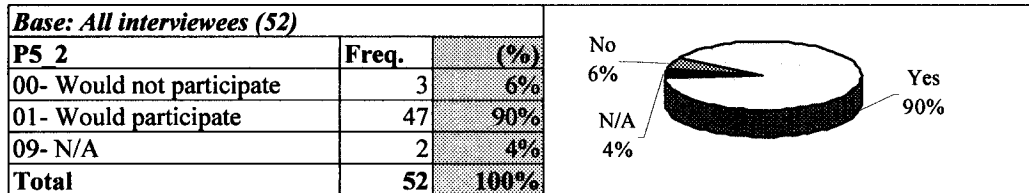


5. PUBLIC COOPERATION

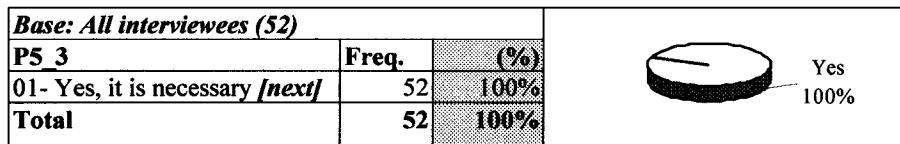
P5_1. Does anyone of your employees clean the road shoulder or adjacent public area in front of your establishment?



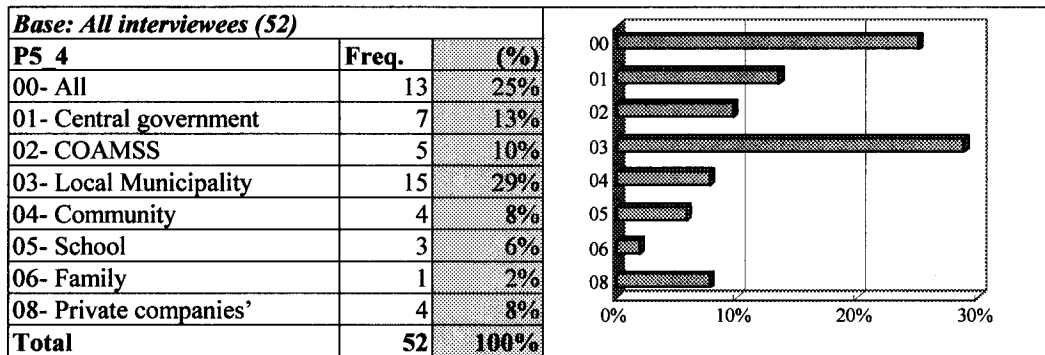
P5_2. It is obviously required that the municipality endeavor more to improve solid waste management. However, public cooperation is also required. Would you cooperate in maintaining a cleaner city and environment?



P5_3. Do you think a campaign to raise awareness of people for maintaining the cleaner city and environment is necessary?

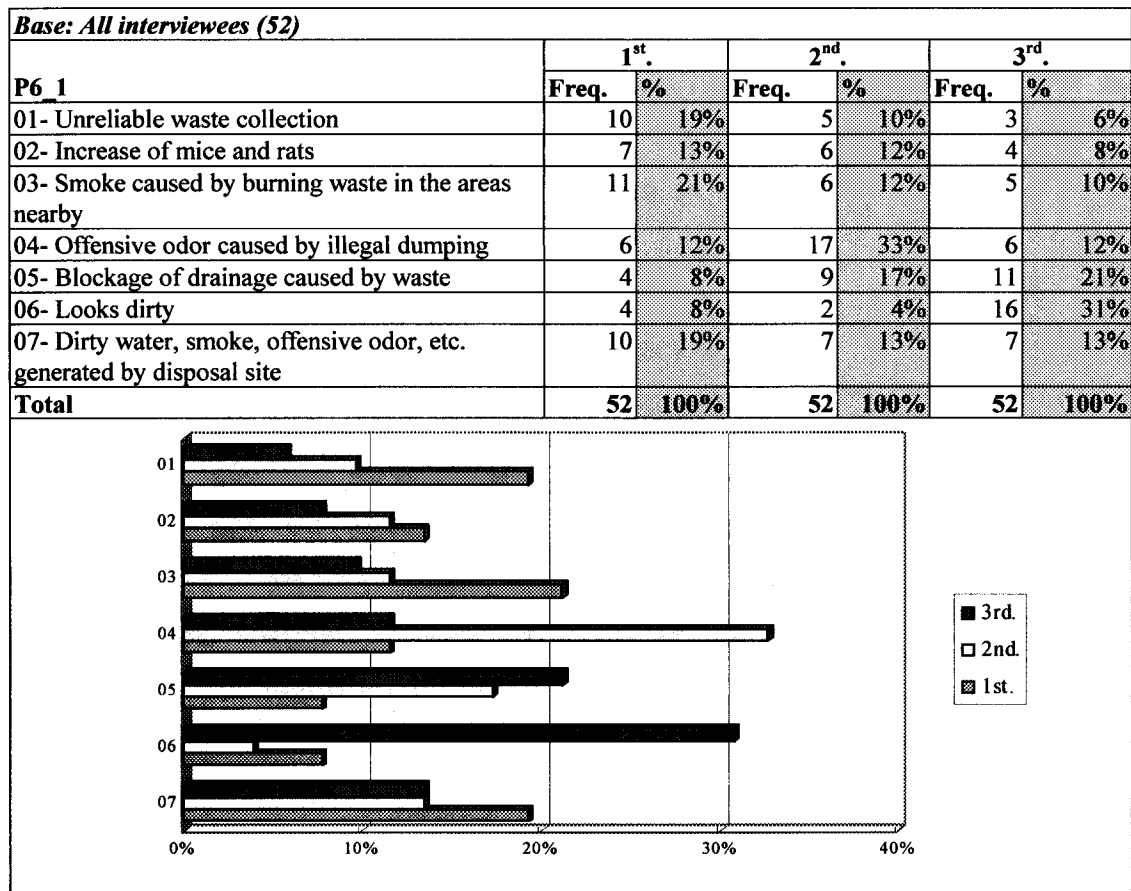


P5_4. Who should take such actions?



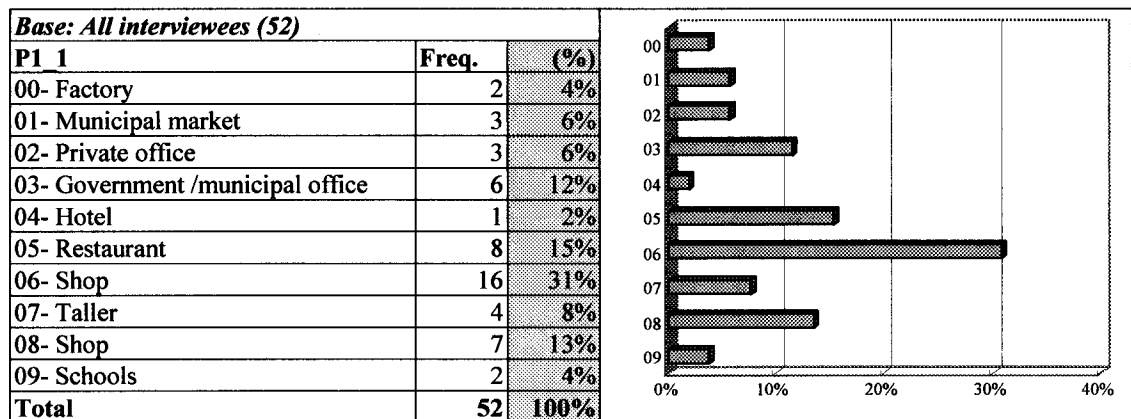
6. PRIORITY OF PROBLEMS RELATED TO SOLID WASTE MANAGEMENT

P6_1. What is the concerned problems related to solid waste management for you? *[select top three]*

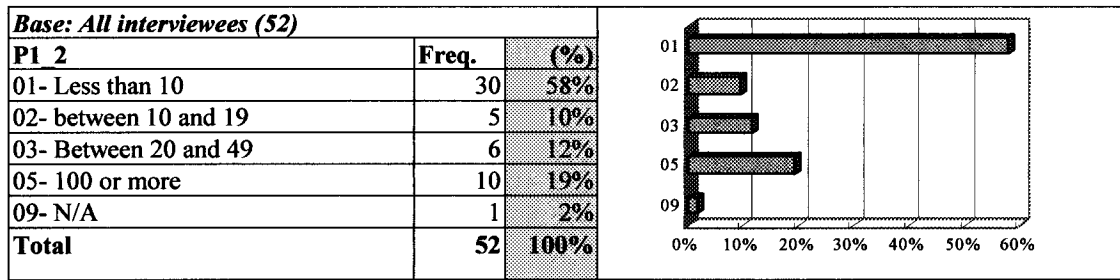


QUESTIONS FOR ADMINISTRATIVE STAFF

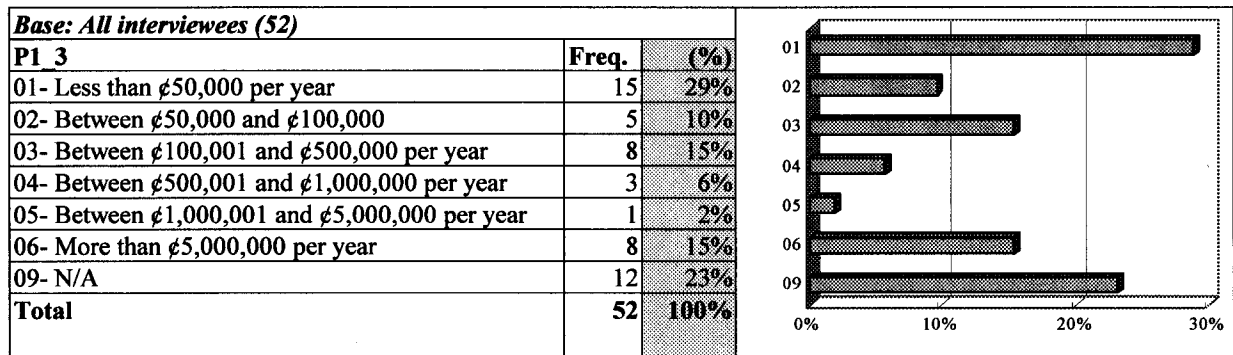
P1_1. What is your business?



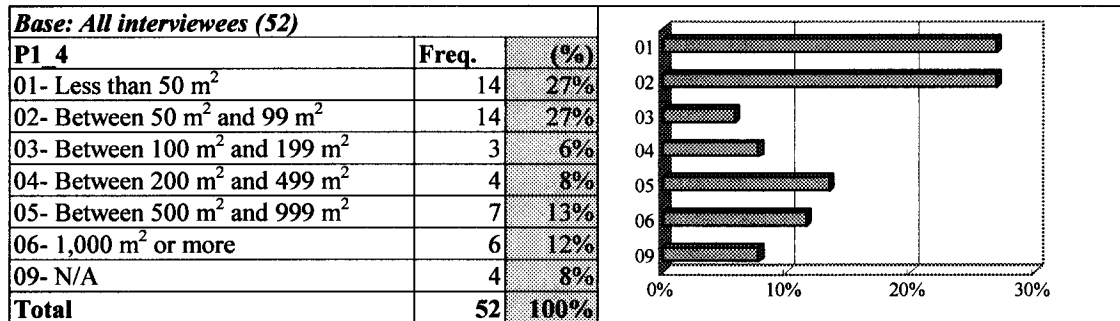
P1_2. How many employees do you have?



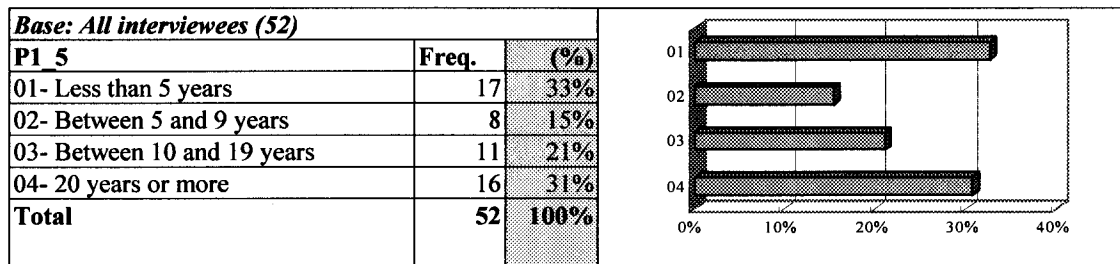
P1_3. How much are the annual sales?



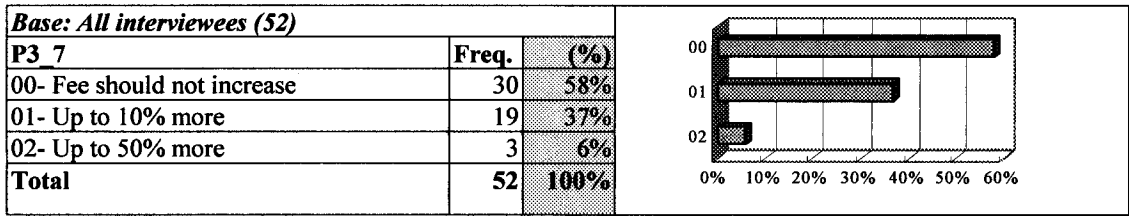
P1_4. How large is total floor area of your institution?



P1_5. How many years have you been running your business here?

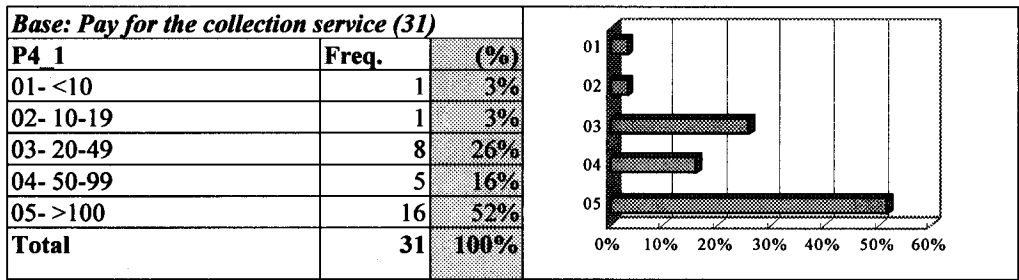
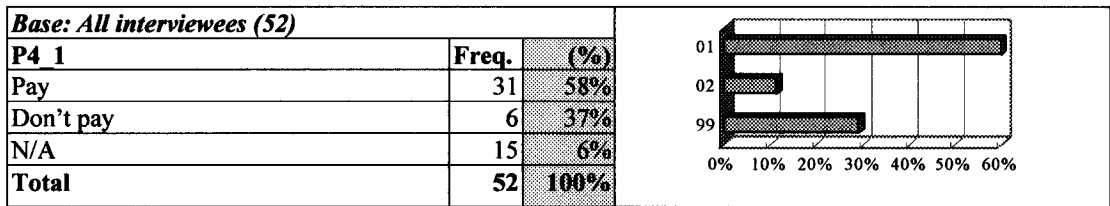


P3_7. How much do you consider it would be fair to pay for the collection service if the fee increases due to the implementation of a recycling program in the San Salvador Metropolitan Area?

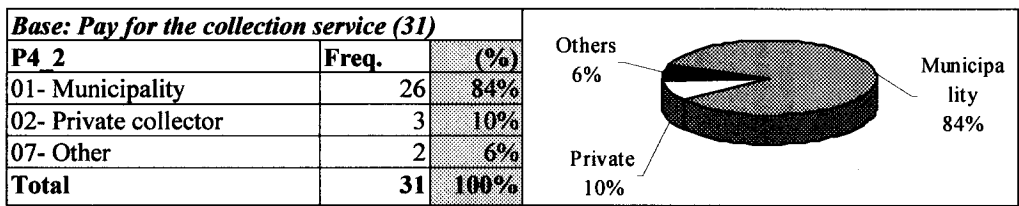


4. COLLECTION FEE AND FINANCIAL MATTERS

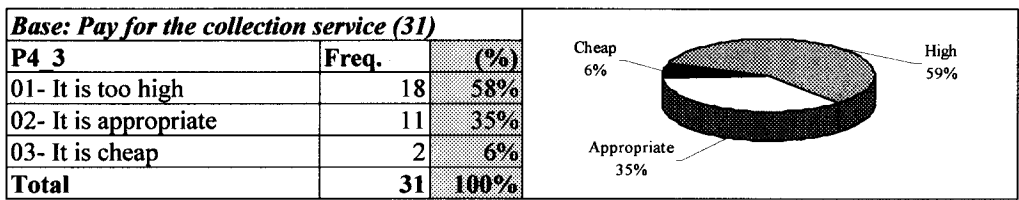
P4_1. How much do you pay for the collection service per month?



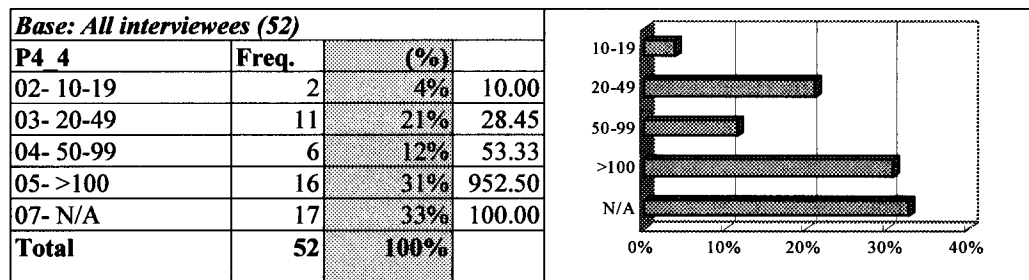
P4_2. Who do you pay it to?



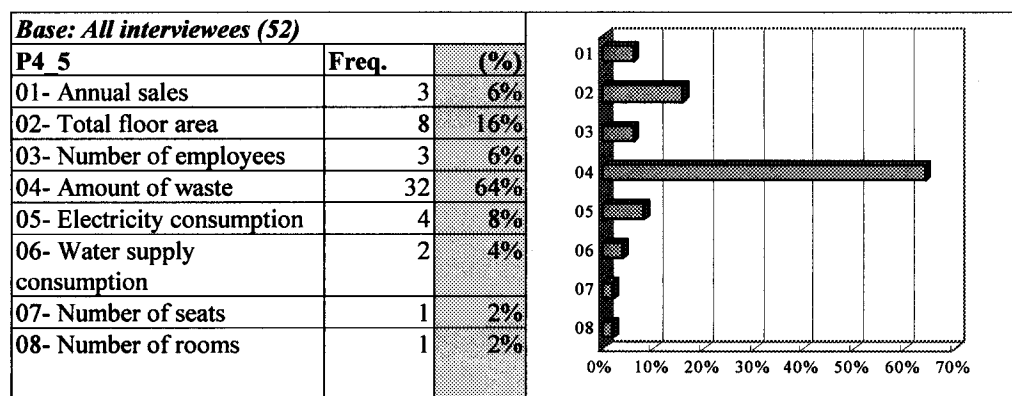
P4_3. What do you think about the amount of waste collection fee?



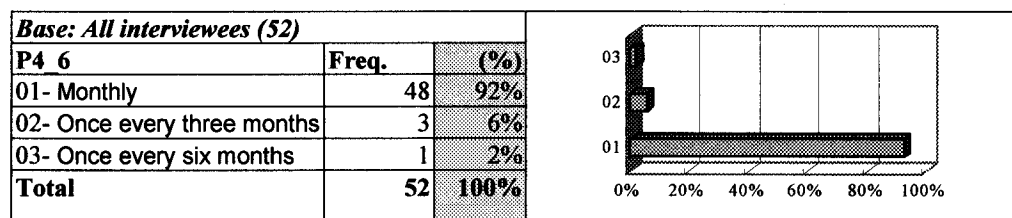
P4_4. Supposing that collection services were operating satisfactory, how much do you think that your household would be willing to pay for the waste collection service? _____ colones per month



P4_5. Do you accept waste collection fee which is set depending on: *[mark everything the interviewee mentions]*



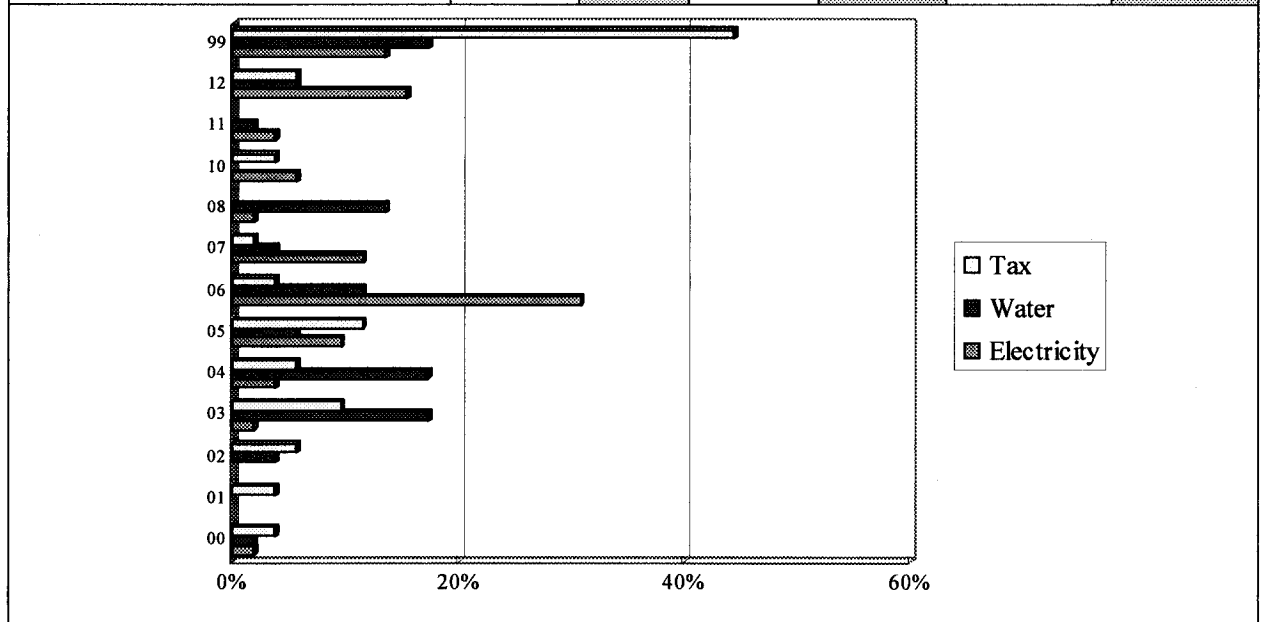
P4_6. How often would you like to pay your bill?



How much do you pay monthly for ...

P4_7. Electricity service \$ _____ Monthly
 P4_8. Water supply service \$ _____ Monthly
 P4_9 Income tax \$ _____ Monthly

<i>Base: All interviewees (420)</i>						
Category	P4 7. Electricity		P4 8. Water supply		P4 9. Income tax	
	Freq.	%	Freq.	%	Freq.	%
00- Don't pay	1	2%	1	2%	2	4%
01- Less than 10 colones					2	4%
02- 10 - 25 colones			2	4%	3	6%
03- 25 - 50	1	2%	9	17%	5	10%
04- 50 - 100	2	4%	9	17%	3	6%
05- 100 - 200	5	10%	3	6%	6	12%
06- 200 - 500	16	31%	6	12%	2	4%
07- 500 - 1,000	6	12%	2	4%	1	2%
08- 1,000 - 1,500	1	2%	7	13%		
10- 2,000 - 3,000	3	6%			2	4%
11- 3,000 - 5,000	2	4%	1	2%		
12- MAS DE 5,000	8	15%	3	6%	3	6%
99- N/A	7	13%	9	17%	23	44%
Total	52	100%	52	100%	52	100%



OBSERVATIONS: _____