

**Plate 4: Field Investigations (4) Medical Waste Survey**



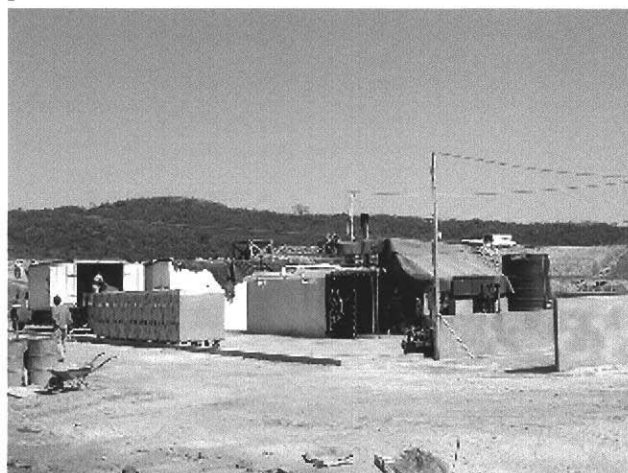
Medical waste are discharged being placed in red plastic cases in order to distinguish it from municipal waste.



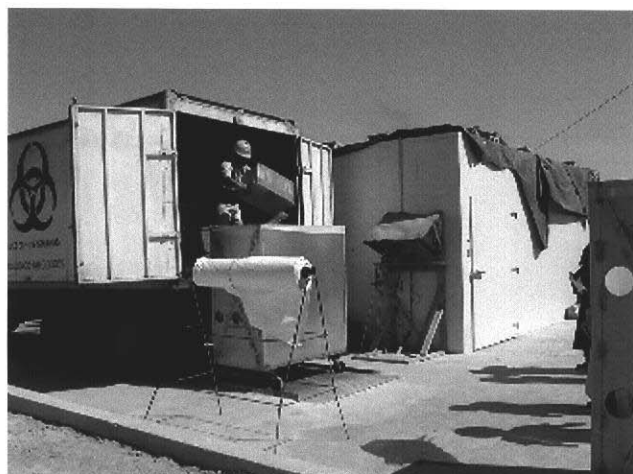
Some medical waste generated by hospitals are gathered at the first medical waste gathering point.



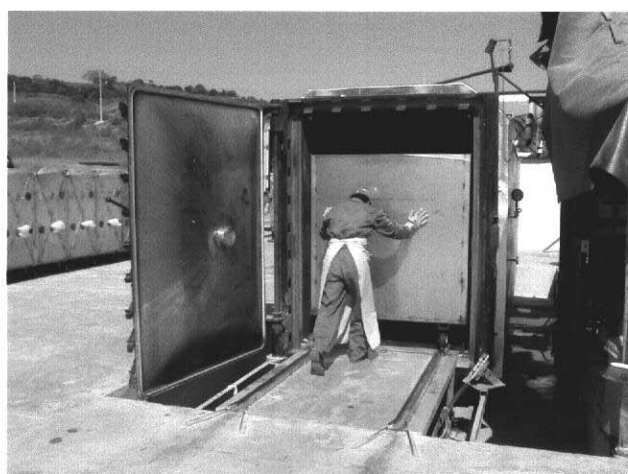
A private waste collection company collects and hauls medical waste from hospitals.



Autoclave in Nejapa Landfill Site



Medical waste are transferred into exclusive carts.



Medical waste are sterilized in the Autoclave.



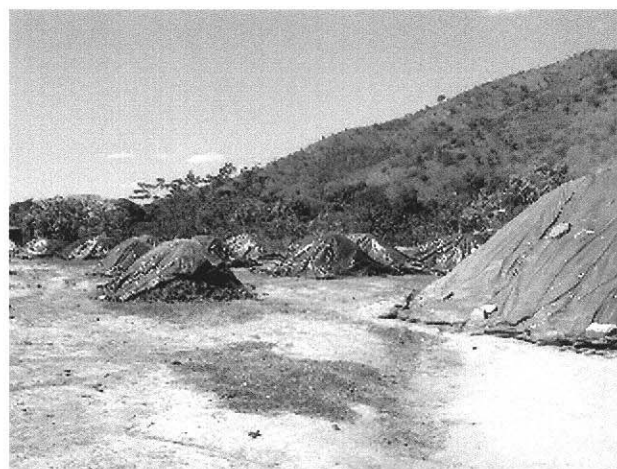
Waste discharged on the street for collection



Waste collection service. Waste collection workers sometimes need to collect waste scattered around the collection point by using a sheet.



Street sweeping. Oil drums are utilized for handcarts.



Compost project being carried out by Municipality of San Salvador



Nejapa Landfill Site



Waste are spread and compacted by a bulldozer in Nejapa Sanitary Landfill Site.

**Plate 6: Pilot Project (1): Sanitary/environmental Education,  
Public Awareness Promotion Campaign about SWM Issues**

**Campaign Logo Contest**



Campaign logo which won the first prize in the campaign logo contest advertized in a local newspaper

**Campaign Goods**



Banners (50), posters (5000), stickers (large:10000, small: 20000) were made for the campaign.

**Workshops for Residents**



Workshops were held in the pilot project areas in order to encourage residents' participation in the clean-up operation and provide them sanitary education.

**Clean-up Operation**



The suitability of the container collection system in marginal areas where collection is unsatisfactory was studied. The clean-up operations were carried out to encourage the residents to dump waste into the containers.

**Workshop for Teacher's Training**



Workshop for primary school teachers was conducted before waste education classes are carried out at their schools.

**Educational Programs on Solid Waste**



The educational booklets, panels and videos produced by Counterpart and the Study Team were used to conduct educational programs at primary schools.

**Plate 7: Pilot Project (2): Collection Service Experiment  
Pilot Project (3): Inspection of Collection Route Improvement**

**Collection Service Experiment**



Containers were made and installed in the pilot project areas where waste collection is not satisfactorily provided.



The clean-up operations were carried out in order to encourage residents to dump waste into the containers.

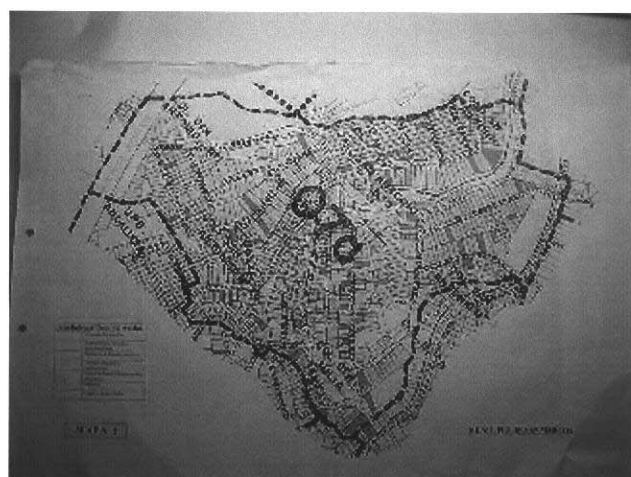


Site visits to the pilot project areas before and after execution of pilot project

**Inspection of Collection Route Improvement**



Counterparts of each municipality and Study Team verified the collection route improvement.



Maps are made in the pilot project.



The effect of the improvement of collection route was verified by Time & Motion Survey.