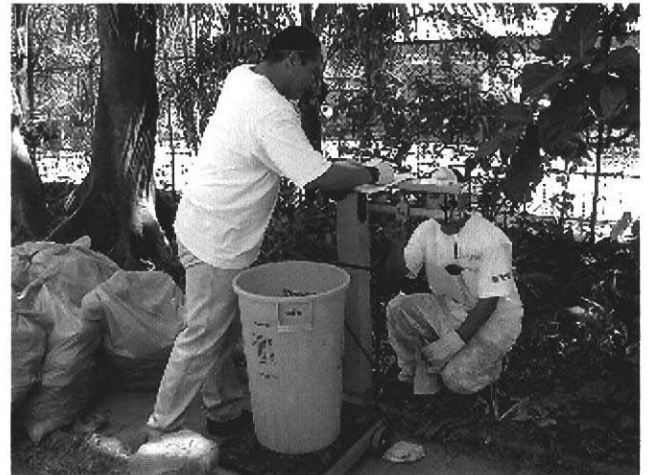


Plate 1: Field Investigations (1) Waste Amount and Composition Survey

Waste Amount Survey



Collection of household waste samples



Weighing of waste samples

Waste Composition Survey



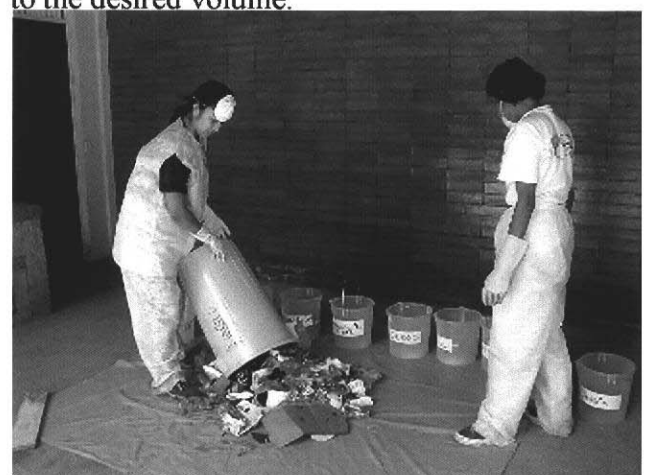
Thorough mixing of collected waste samples



After proper mixing, the waste was divided into four segments of approximately the same size and this is repeated until the volume is reduced to the desired volume.



Waste samples were put into a calibrated plastic bucket to record volume and weight.



Analysis of physical composition of waste samples

**Plate 2: Field Investigations (2) Waste Amount and Composition Survey,
Market Research on Recycling**

Waste Composition Survey



Samples were divided into 10 components.



The samples divided into 10 components were measured individually.



Moisture contents of waste were measured.



Carbon and nitrogen contents of the waste were analyzed.

Market Research on Recycling



Interview to the recycling company



Cans ready to be sold after compressed at the recycling company

Public Opinion Survey (POS)



Interview of 420 households on waste discharge and collection service



Interview of public institutions

Time and Motion Survey



Interview of private companies



Waste collection service by compactor truck



Waste collection service by dump truck



Interview to a driver of waste collection vehicle