

# Annex SOC

**SOC-F-1**

**Preliminary Analysis on Major Socio-Economic  
Characteristics in the Study Area Basin**

# SOC-F-1

## PRELIMINARY ANALYSIS ON MAJOR SOCIO-ECONOMIC CHARACTERISTICS IN THE STUDY-AREA BASIN ( A. FOR THE LAND AREA )

Item	Advantage	Disadvantage
<b>SOCIAL ASPECT:</b>		
1. Social framework	Solid and well-managed for high development with basic westernization	Some underprivileged classes could not adapt with the high pace of social development
2. Social Infrastructure	Basic social-infrastructure such as Road, Water, School and Hospital are almost available for common uses	Most domestic sewage discharges are still not treated. Most rural parts have no sewage piping works.
3. Social strata	Basic social strata of Gaucho tradition and spirit.	Rather closed in local community-based system
4. Social services	Possessing basic social services at each community unit	Concentrated in metropolitan and urban areas. Lack of recreation facilities in rural areas.
5. Life-style	Mostly westernized lifestyle, but not for underprivileged classes	Not so pressed in working style
<b>ECONOMIC ASPECT:</b>		
1. Economic Asset	Possessing a rather abundant asset for economic development	Facilities and systems are rather old. Needed to be renovation and updated
2. Natural resources	Possessing abundantly natural resources ( land, water, climat ) as basic potential factors for economic development	Most land areas and water resources are needed for consolidation works for socio-economic development..
3. Infra-structures and facilities for production	Possessing basic production infrastructures and facilities for all economic sectors .	Mostly concentrated in Rio-Grande-Pelotas and the litoral part
4. Human resource	Abundance of labor force of skilled workers and educated persons	No intensive employment programs. Rather politically oriented mentality
5. Production system	Production systems limited in areas, types and scales	Limited in production area, types and employment volumes
6. Martket	Mainly based on some specified domestic markets for routine stability	No further market researches and engagements in global competition
7, Supporting facilities	Available supporting facilities from previous times for using up to now	No large effects in dynamic supports for global competition and economic development in all sectors

**PRELIMINARY ANALYSIS OF  
MAJOR SOCIO-ECONOMIC CHARACTERISTICS IN THE STUDY-AREA BASIN  
( B. FOR THE INLAND WATER AREA )**

Item	Advantage	Disadvantage
<b>SOCIAL ASPECT:</b>		
1. Whole region sharing a same natural water resource	Contribution to unification of local mind for a mutual regional development	Water of the lake being polluted by various pollution sources
2. Living media by forming fisherman colonies	Establishing a potential economic sector with long tradition in the region	Present polluted water and degradation in eco-system totally affecting their living
3. Most local agglomerations concentrating around the lake	Forming basic factors for further socio-economic development in this part of the region	Restricting the socio-economic development for other inside regions.
<b>ECONOMIC ASPECT:</b>		
1. Large water surfaces for multi-purposed economic development	Universal utilization in fishery, aquaculture, tourism, navigation, irrigation, industrial water and even as drinking water source.	Needs of strict controlling system of water quality and utilization areas.
2. Long circle coastal lines for multi-purposed economic development	For commercial development of touristic lake-around-journey road, resort villas, pensions, recreation-centers etc.	Needs of large investments for these beach-side construction works
3. Two main regional seaports ( Porto Alegre and Rio Grande)	For uses in domestic and international marine transportation with cheap transport costs	Depth-restriction in in-lake navigation. Needs of annual sediment dredging and economic promotion activities
4. Two kinds of inland water ( fresh and saline )	Could be used for 2 types of aquaculture ( fresh and saline waters ) of high commercial products ( oysters, shrimp, pearl etc.)	Needs of researches and investments as well as governmental supports and management planning
5. Utilization for international events	Could be used for international events of marine sports, world youth-jamboree, marine study symposium, international association conferences etc.	Needs of construction of international meeting facilities and consolidation works for developing the under-developed parts around the whole lake.

**SOC-F-2**

**Brief Comparison Between Programa Mar de Dentro  
and JICA Master Plan Study**

## SOC-F-2

### BRIEF COMPARISON BETWEEN PROGRAMA MAR de DENTRO AND JICA MASTER PLAN STUDY

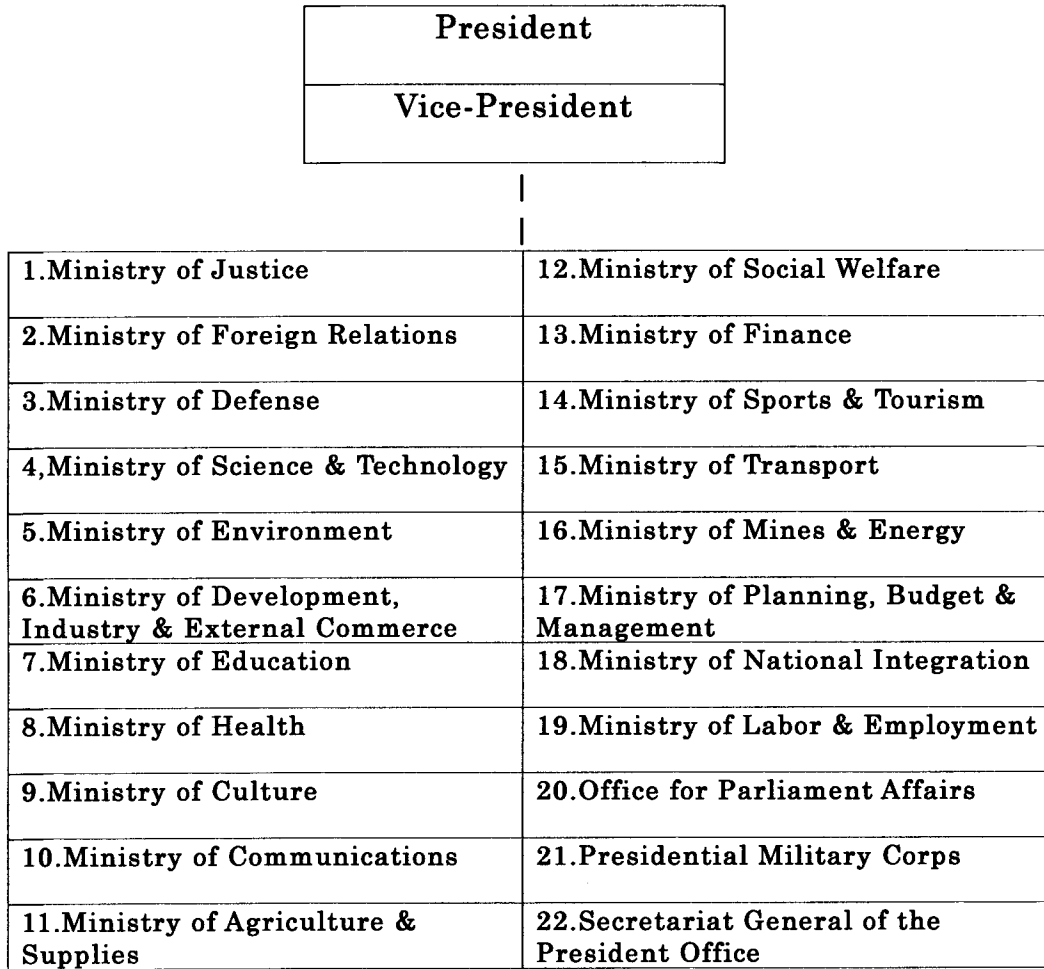
Item	Programa Mar de Dentro	JICA M/P Study
1. Initiative	For environmental conservation and socio-economic development of the South	For management of the aquatic environment of Patos and Mirim lakes
2. Long-term Objective	Maintenance of environmental quality for socio-economic improvement in the region	Environmental management of the Study area ( Patos-Mirim basins )
3. Medium & short-term Objectives	Implementing the 9 sub-programs for a period of 10-15 years	Obtaining the designed water quality at target years of 2010 and 2020 with implementation of corresponding sectoral plans
4. Covered Area	50 Municipio in the South of RS	50 Municipio in the South of RS
5. Beneficiary Population	The population of 50 Municipio in Mar Dentro Programa (1.1 million inhabitants )	About 1 million inhabitants covered in the Study area
6. Project-Components	4 Modules consisting of 9 sub-programs (1. Administration and Management, 2. GIS, 3. Environmental Education, 4. Treatment systems of Water, Sewage and Solidwaste, 5. Housing sanitation, solid waste and animal waste control, 6. Sustainable development of basins and sub-basins, 7. Preservation of environmental properties, 8. Communication Planning and 9. Environmental M/P )	6 Sectoral Plans ( Water quality control, Water quality monitoring, Basin ( erosion and pollution control) management, Wetland management, Environmental education and Project-Informaton mangement system )
7. Priority Projects	8-9 sub-programs to be selected	To be specified in the Final Report
8. Project-Benefits	For globalized socio-economic benefits in the region	Socio-economic benefits of all related aspects are being identified for remuneration
9. Project Costs	To be depended on State-allocated budgets and cooperation situation with other organizations.	To be calculated and noted in the Final Report
10. Finance Sources	State budget and cooperation with other organizations For 2000, 2,7 million R\$ from State budget. ( Expecting 6-7 million R\$ for a 4 year-program )	Not yet specified. But basically 2 sources ( foreign and local ) are considered indispensable for the project implementation.
11. Implementation Plan	Starting from 2000, but detailed scheduling is no yet determined	Projected implementation plan will be notified in the Final Report
12. Others	Could be changed with political policy changes	To be used as a basic document for international (financial and technical ) cooperation

**SOC-F-3**

**Organization of the Federal Government**

### SOC-F-3

## ORGANIZATION OF THE FEDERAL GOVERNMENT



Note: As for the present Federal Government of President Fernando Henrique Cardoso starting from Dec.1999.