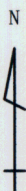
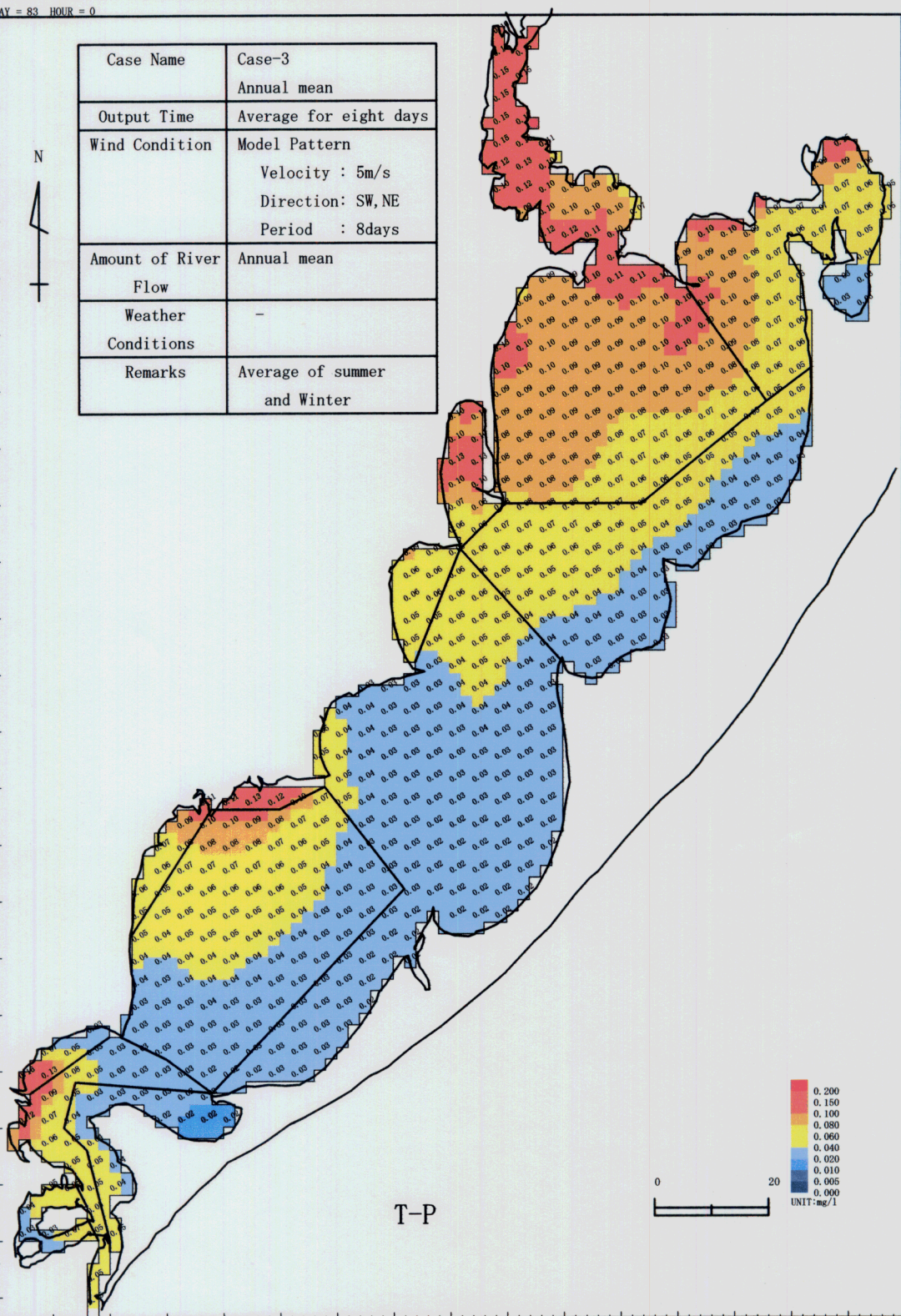


DAY = 83 HOUR = 0

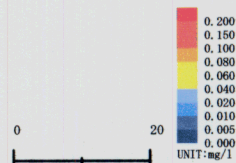
115
110
105
100
95
90
85
80
75
70
65
60
55
50
45
40
35
30
25
20
15
10
5



Case Name	Case-3 Annual mean
Output Time	Average for eight days
Wind Condition	Model Pattern Velocity : 5m/s Direction: SW, NE Period : 8days
Amount of River Flow	Annual mean
Weather Conditions	-
Remarks	Average of summer and Winter



T-P



DIGa003_bodts.Ptp

THE STUDY ON THE ENVIRONMENTAL MANAGEMENT
OF THE HYDROGRAPHIC BASIN OF PATOS AND MIRIM LAKES
IN THE FEDERATIVE REPUBLIC OF BRAZIL

JAPAN INTERNATIONAL COOPERATION AGENCY
KOKUSAI KOGYO CO., LTD. / PACIFIC CONSULTANTS
INTERNATIONAL

Fig. 5-1

Distribution of T-P Concentration
in Case 3 (Reduction rate: 20%
for main rivers and 50% for
other rivers).