

List of Figures

| | <i>Page</i> |
|------------|---|
| Fig. 2.1.1 | Organogram of MAC..... F - 1 |
| Fig. 2.1.2 | Organogram of RCO..... F - 1 |
| Fig. 2.1.3 | Administrative Structure..... F - 2 |
| Fig. 3.1.1 | Population Distribution of Coast Region..... F - 3 |
| Fig. 3.1.2 | Isohyetal Lines in Coast Region F - 4 |
| Fig. 3.1.3 | Drainage System in Coast Region F - 5 |
| Fig. 3.1.4 | Hydrogeologic Zones in Coast Region F - 6 |
| Fig. 3.1.5 | Soil Map for Coast Region F - 7 |
| Fig. 3.1.6 | Agricultural Soil Capability Map for Coast Region F - 8 |
| Fig. 3.1.7 | Agricultural Land Use Map in Coast Region..... F - 9 |
| Fig. 3.2.1 | Road System of Coast Region F - 10 |
| Fig. 3.3.1 | Market Channel for the Area along the Morogoro Highway..... F - 11 |
| Fig. 3.3.2 | Fluctuation in Price on Selected Major Vegetables..... F - 12 |
| Fig. 3.5.1 | Location Map of Villages Surveyed F - 13 |
| Fig. 3.5.2 | Drinking Water Sources and Water Quality by Village..... F - 14 |
| Fig. 4.1.1 | Problem Tree Prepared in the PCM Workshop F - 15 (25 th and 26 th November 1999) |
| Fig. 4.1.2 | Problem Tree Prepared in the PCM Workshop of Extension Officers..... F - 16 (1 st December 1999) |
| Fig. 4.2.1 | District-wide Horticultural Farming System in Coast Region..... F - 17 |
| Fig. 5.2.1 | Objective Tree and Development Approaches F - 18 |
| Fig. 5.3.1 | Credit Transaction at Stage I..... F - 19 |
| Fig. 5.4.1 | Implementation Schedule of F - 20 Participatory Development Capacity Building Programme |
| Fig. 6.2.1 | Area Classification of Development Potential for Horticulture F - 21 |

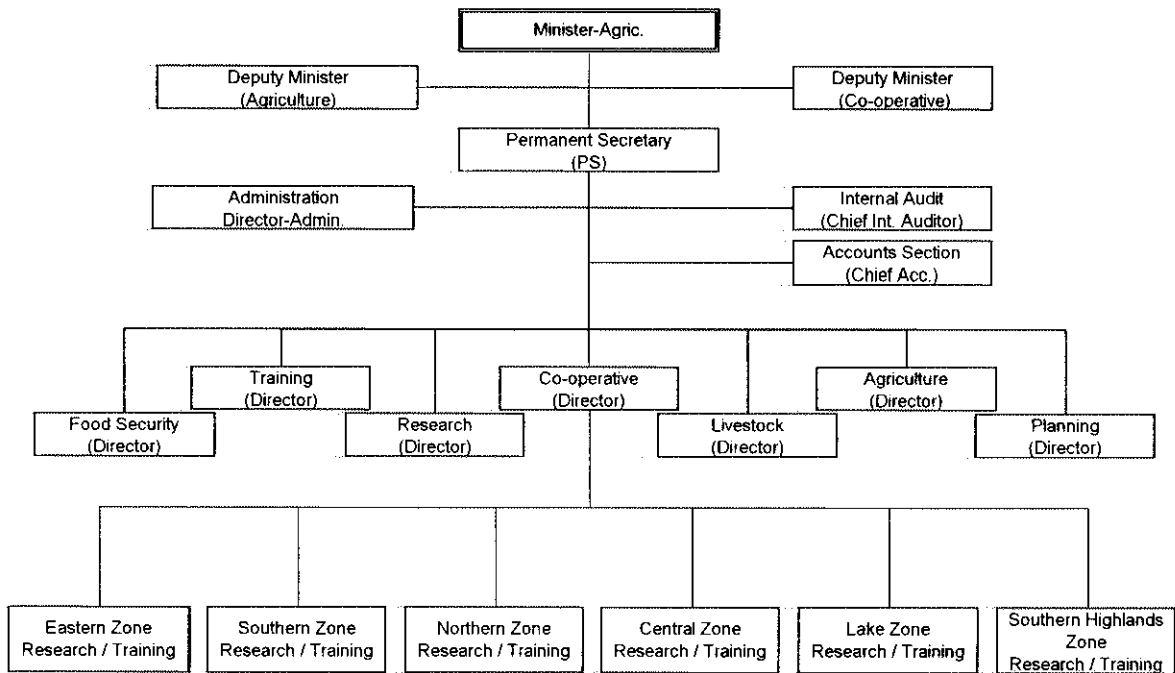


Fig. 2.1.1 Organogram of the Ministry of Agriculture and Cooperative (MAC)

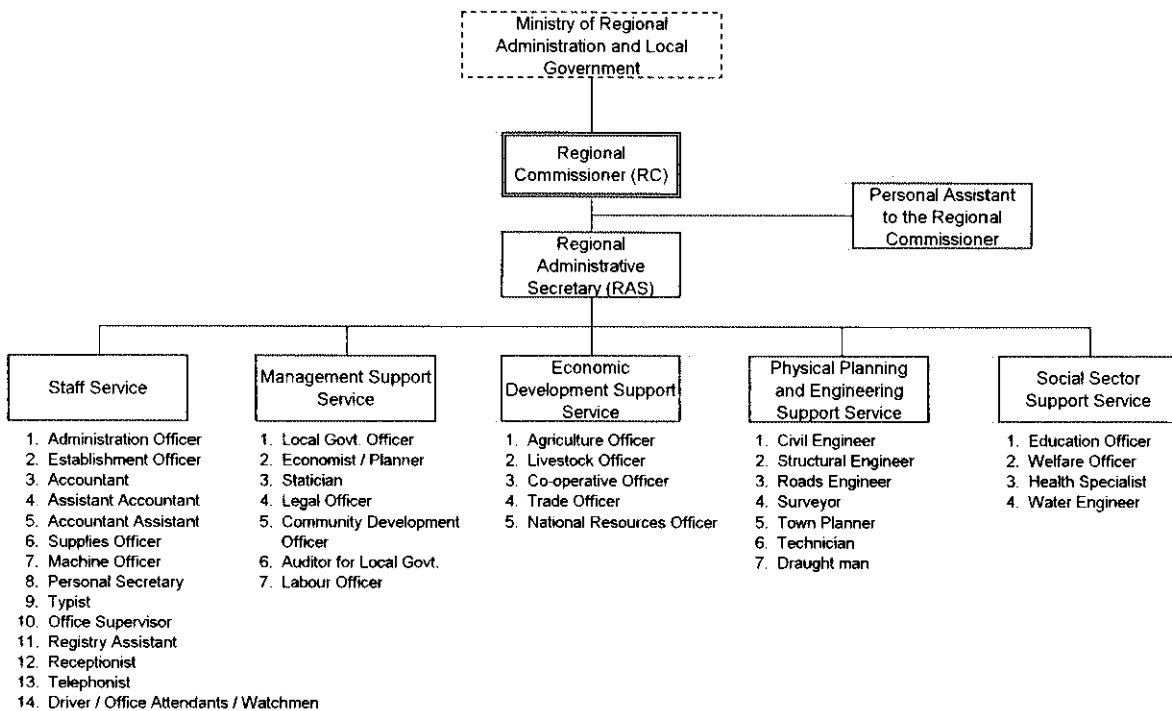
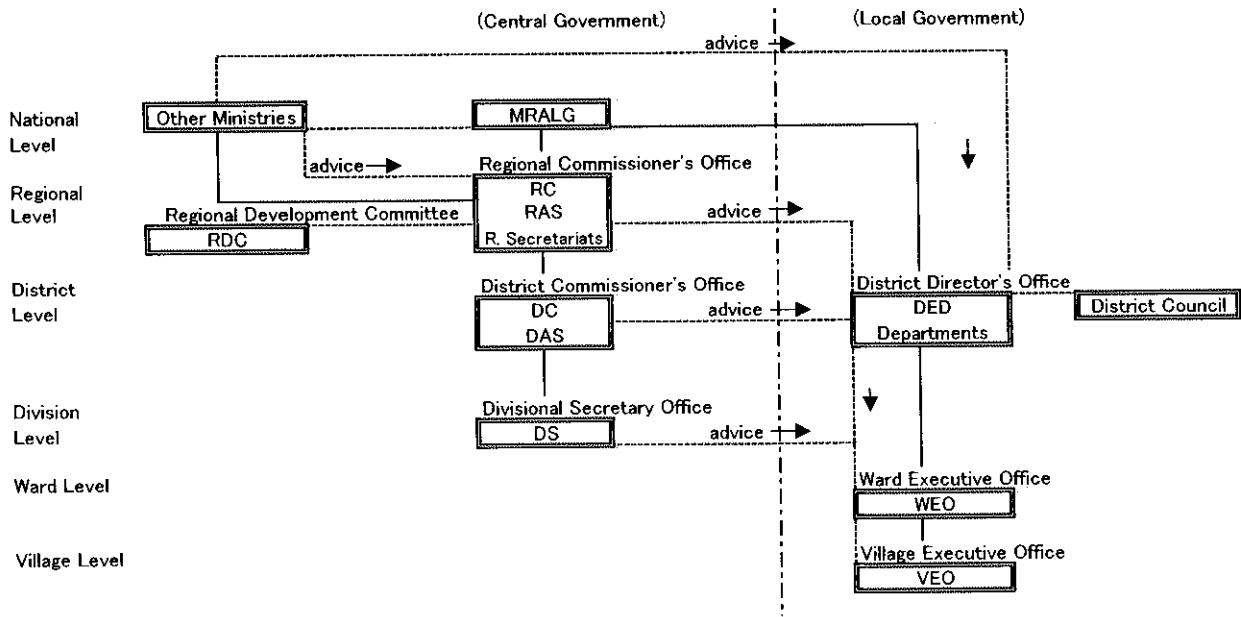


Fig. 2.1.2 Organogram of the Regional Commissioner's Office (RCO)



(Remarks)

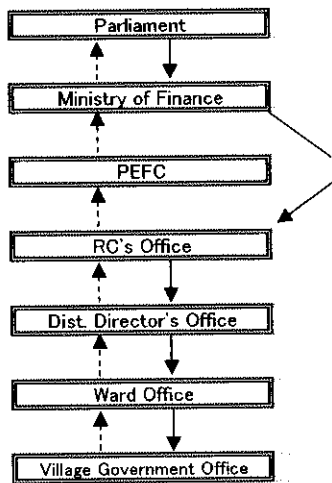
RC and DC are nominated by the President of Tanzania.
 Role of RC is only administration advisory and supervision
 Role of DC and DS is to guard law and order.
 District Council has rights of decision making on personnel, budget and reorganization of District Office.

———— Relationship on Administrative Matters
 - - - - - Consultative/Advisory

- MRALG Ministry of Regional Administration and Local Government
- PEFC Parliamentary Economic and Finance Committee
- RC Regional Commissioner
- RAS Regional Administrative Secretary
- DC District Commissioner
- DAS District Administration Secretary
- DED District Executive Director
- DS Divisional Secretary
- WEO Ward Executive Officer
- VEO Village Executive Officer

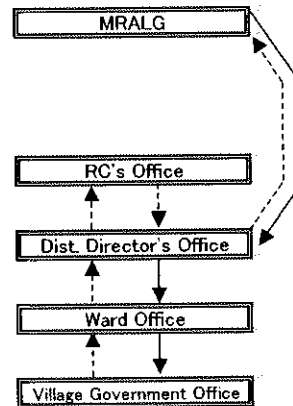
Flow of Budget 1. In case of Subvention of the Central Government

Subvention from Central Government
 Used for Salaries and Development Projects



2. In case of District Revenue Budget

Resources from Cess and Levy
 Used for General Running of the District



notice: Dotted arrows show the flow of budget request and solid ones, flow of budget.

Fig. 2.1.3 Administrative Structure

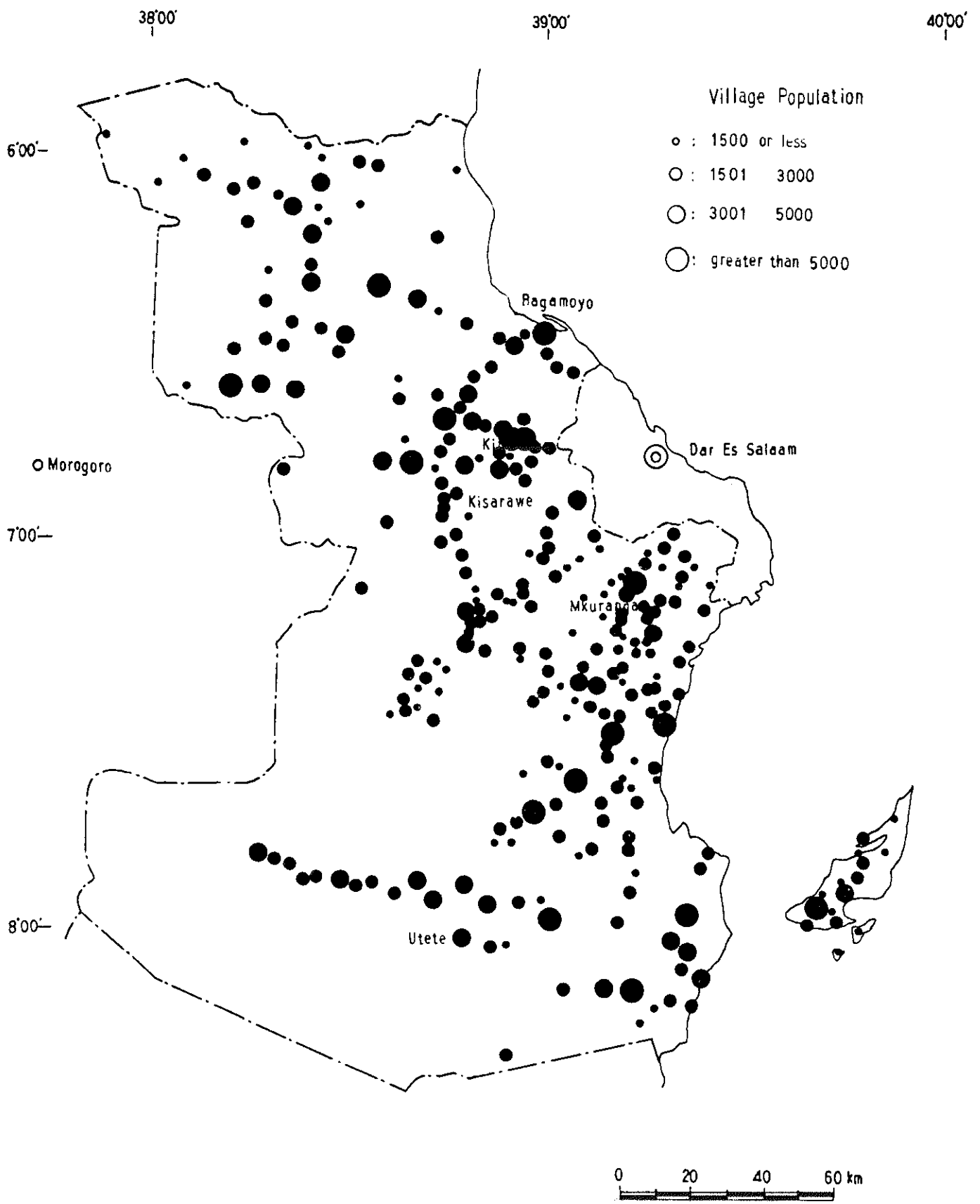


Fig. 3.1.1 Population Distribution of Coast Region

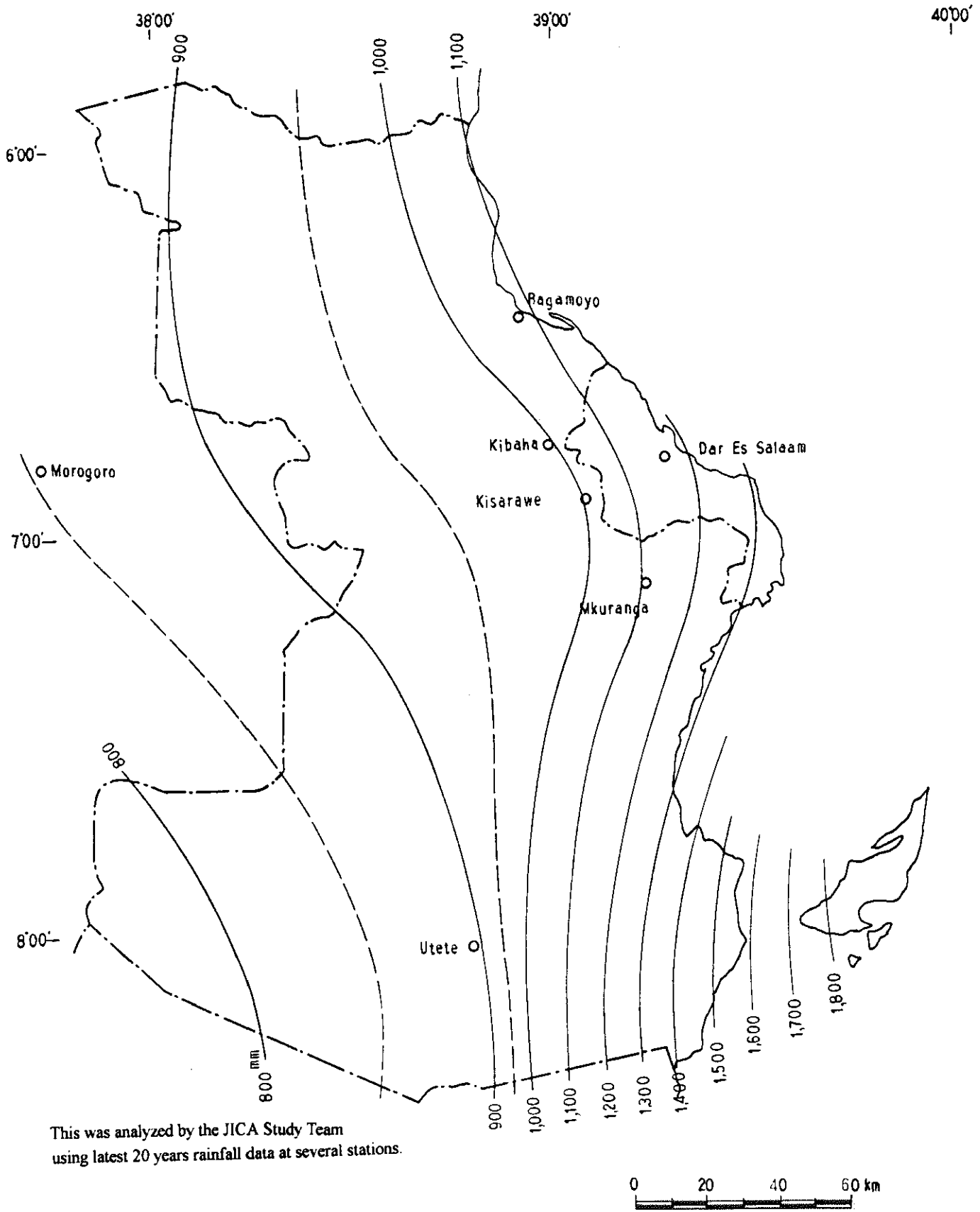


Fig. 3.1.2 Isohyetal Lines in Coast Region

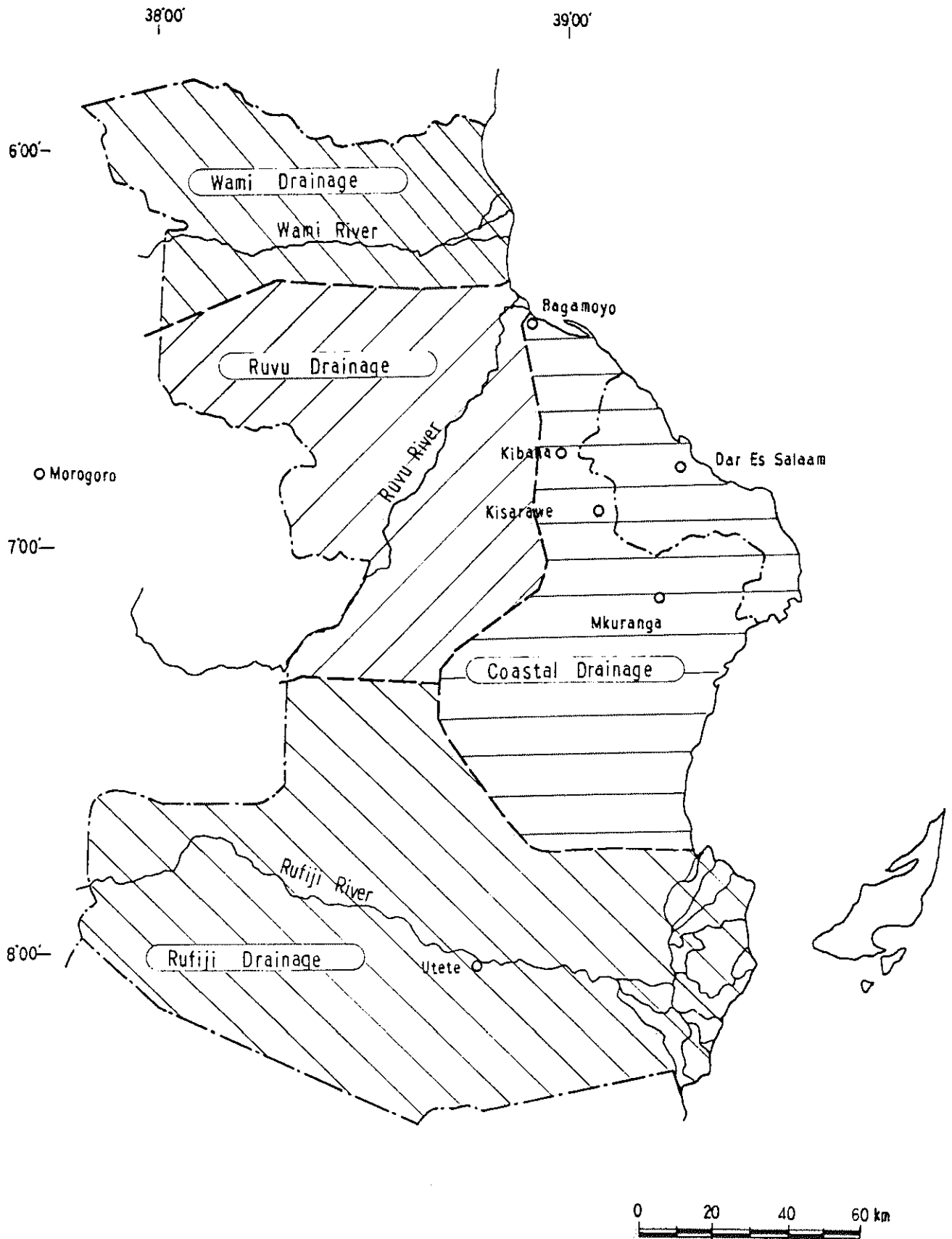
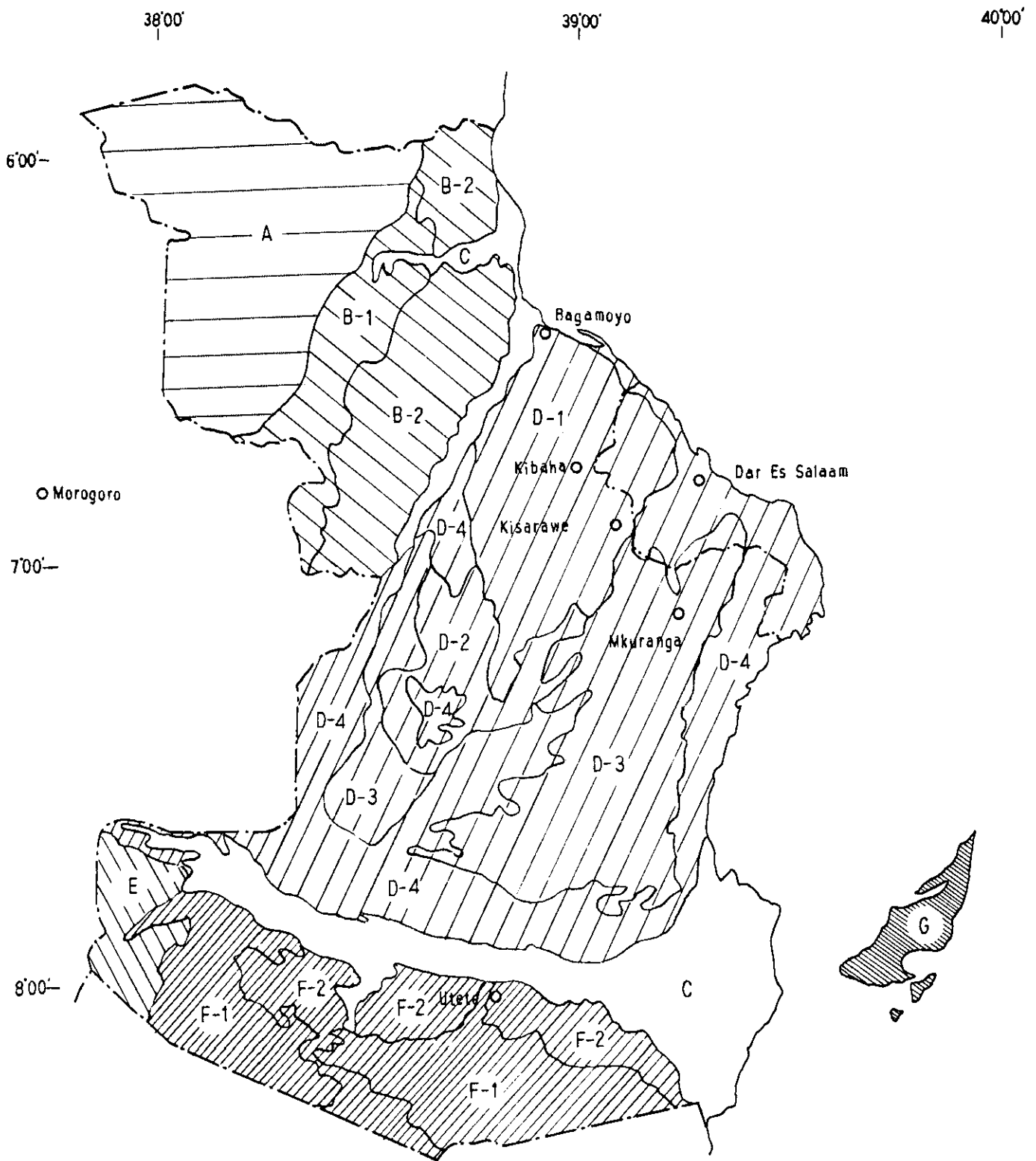


Fig. 3.1.3 Drainage System in Coast Region



Source: Coast/Dar Es Salaam Regions Water Master Plan, Ministry of Water

Fig. 3.1.4 Hydrogeologic Zones in Coast Region

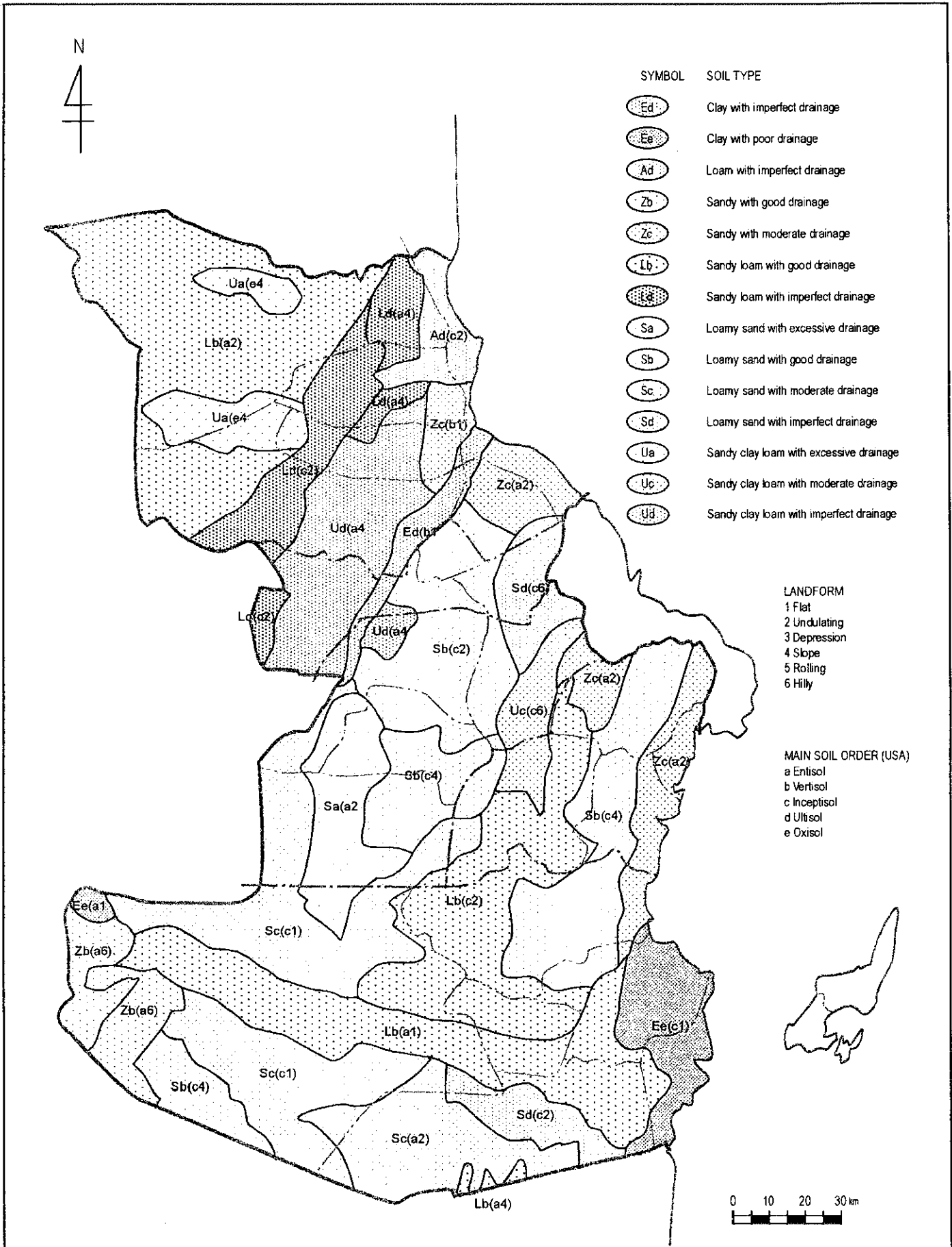


Fig. 3.1.5 Soil Map for Coast Region

Source: Soil Atlas of Tanzania, S.A. Hathout, 1983



LEGEND

- 1 Soils with no significant limitations in use for crops.
- 2 Soils with moderate limitations that restrict the range of crops or require moderate conservation practices.
- 3 Soils with moderately severe limitations that restrict the range of crops or require special conservation practices.
- 4 Soils with severe limitations that restrict the range of crops or require special conservation practices.
- 5 Soils with very severe limitations that restrict their capability to producing perennial forage crops and are feasibly improved.
- 6 Soils capable only for producing perennial forage crops and improvement practices are not feasible.
- 7 Soils with no capability for arable culture or permanent pasture.

Soil Properties Conservation practices

| | Severe | Moderate |
|------------------------|--------|----------|
| Topography | A | a |
| Drainage | B | b |
| Erosion | C | c |
| Stoniness | D | d |
| Fertility (Salinity) | E | e |
| Water availability | F | f |
| Soil phase | G | g |
| Water holding capacity | H | h |

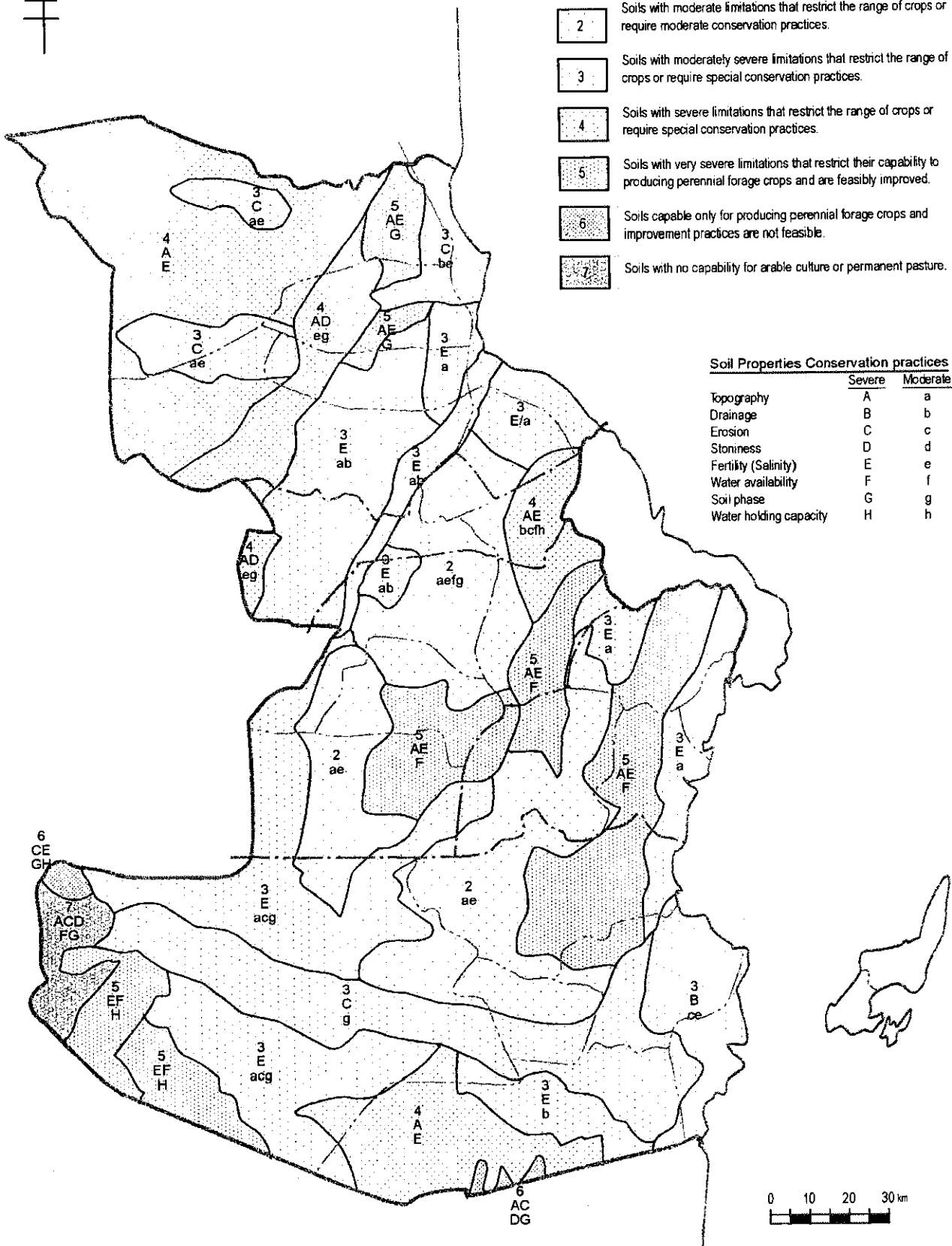


Fig. 3.1.6 Agricultural Soil Capability Map for Coast Region

Source: Soil Atlas of Tanzania, S.A. Hathout, 1983

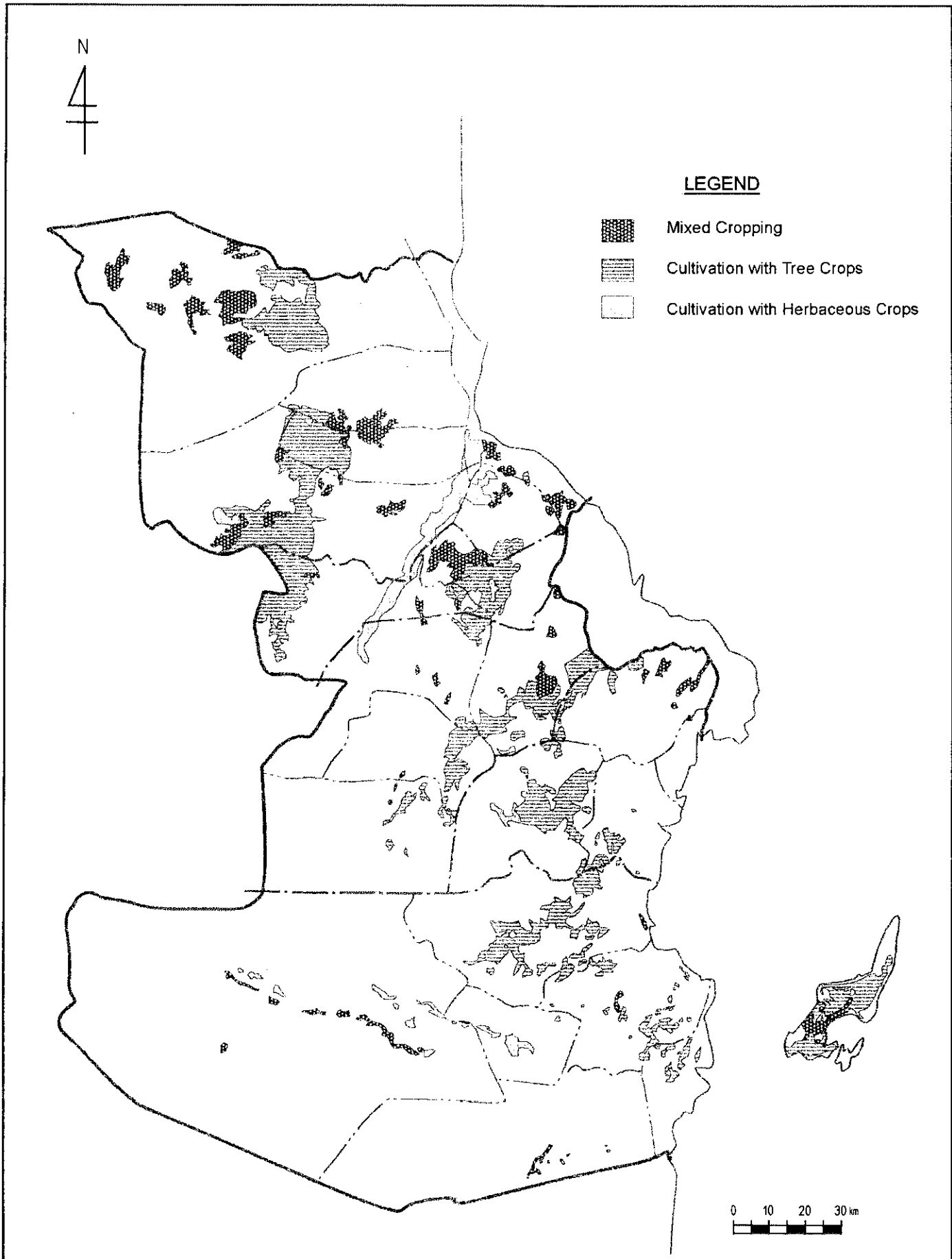
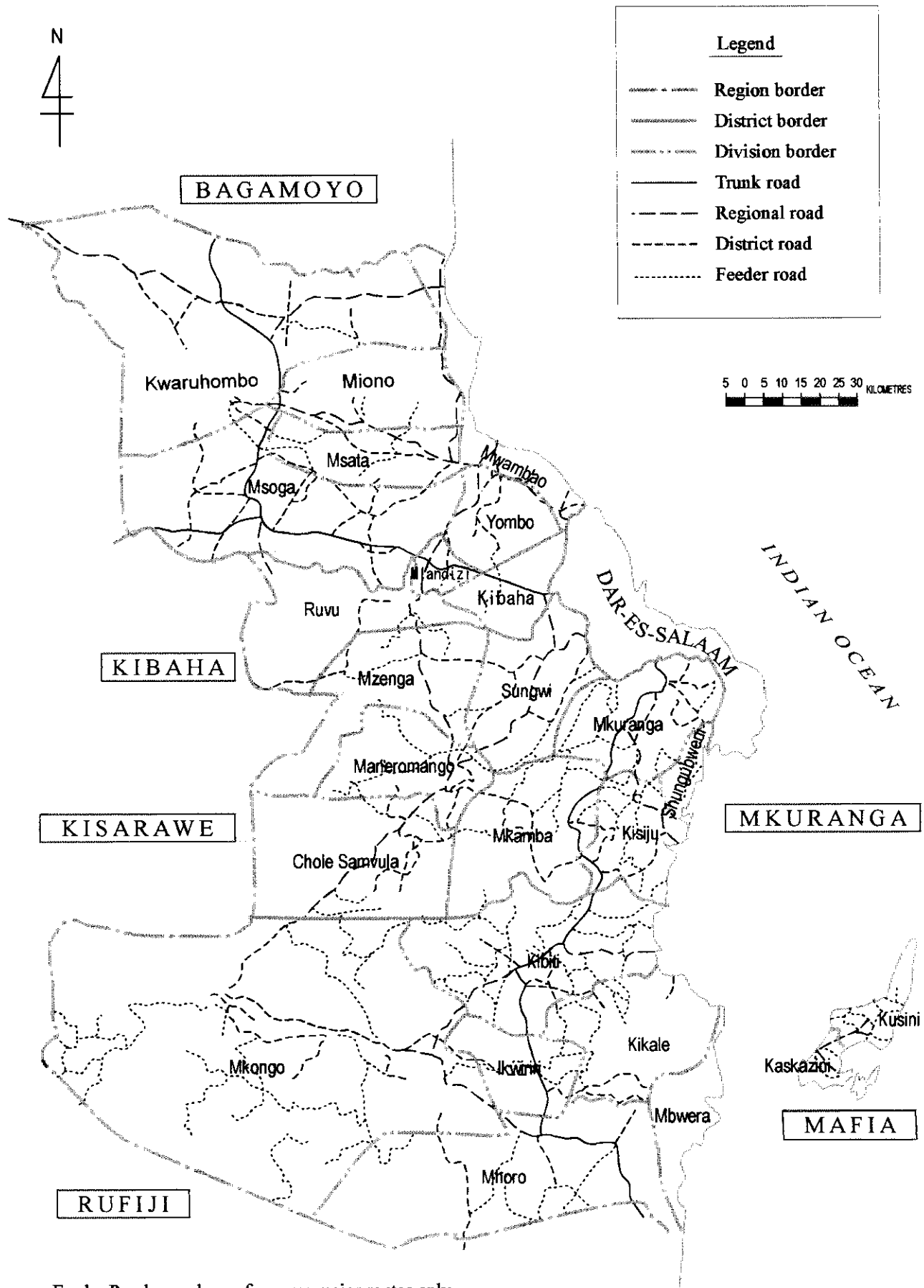


Fig. 3.1.7 Agricultural Land Use Map in Coast Region

Source: Land Cover and Land Use Map (1/250,000),
Hunting Technical Service, 1996



Feeder Roads are shown for some major routes only.

Fig. 3.2.1 Road System of Coast Region

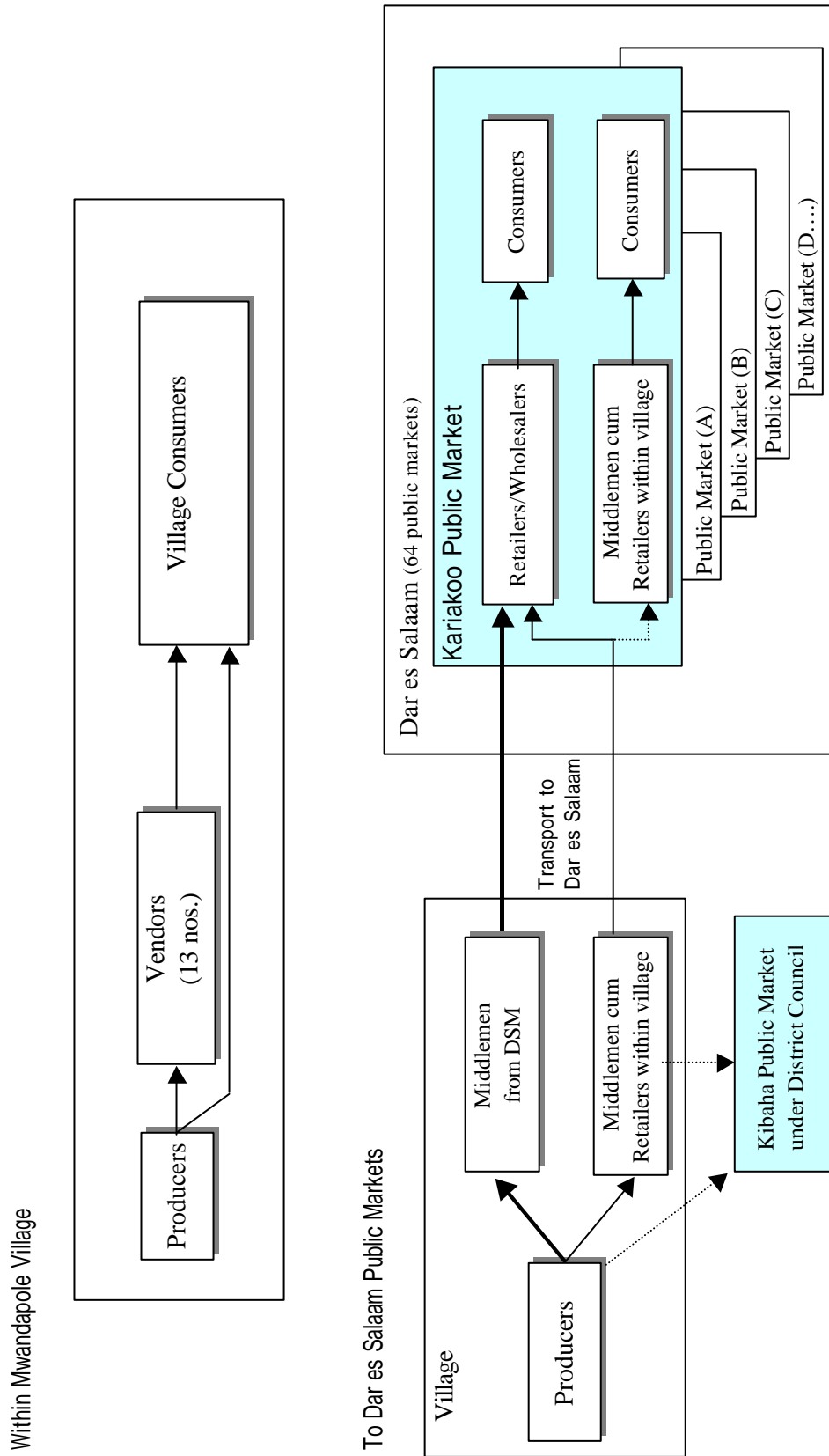
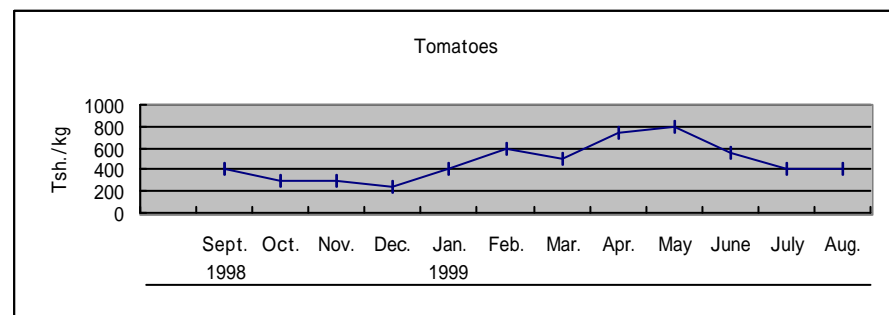
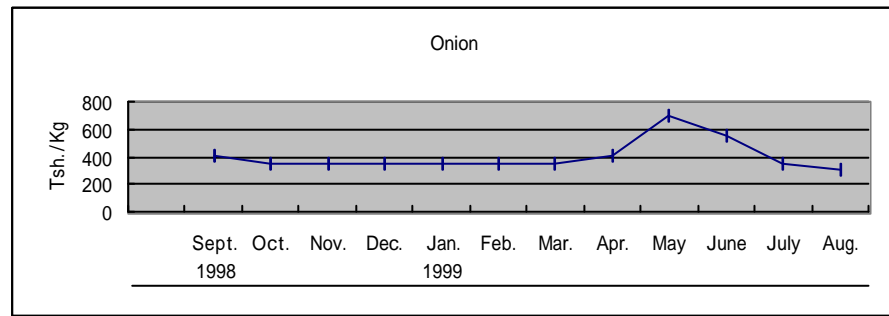
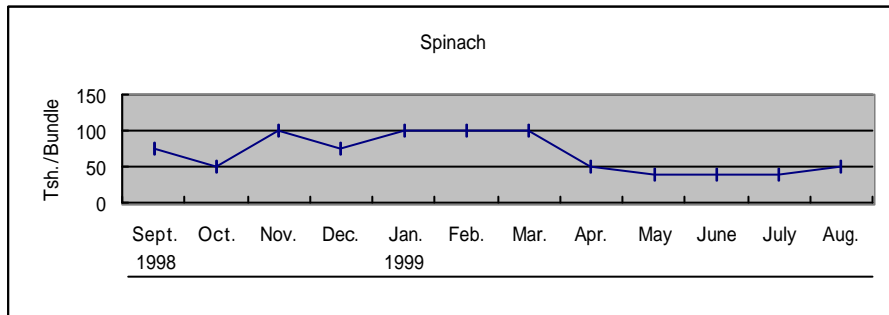
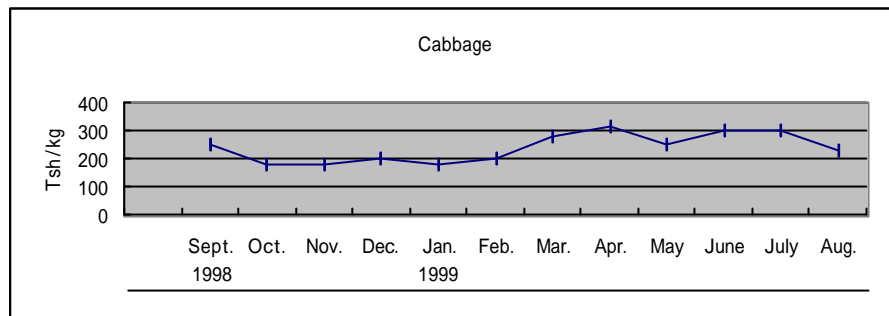
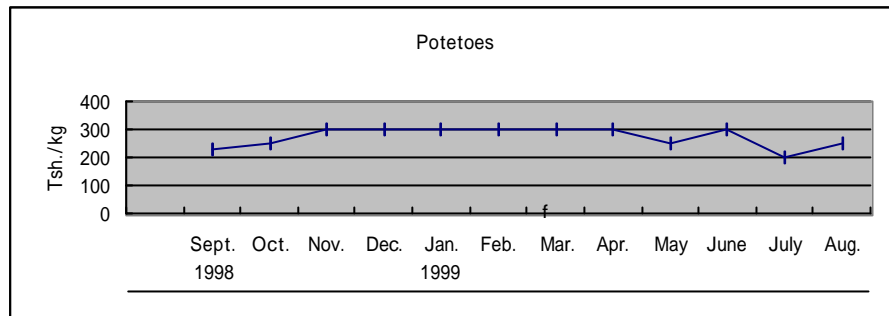


Fig 3.3.1 Market Channels for the Area along the Morogoro Highway



Source: Financial Times, from Sept.1998 to Aug.1999.

Note: Retail price calculated by each the first weekly mean at Ubungo market in Dar es Salaam.

Fig. 3.3.2 Fluctuation in Price on Selected Major Vegetables

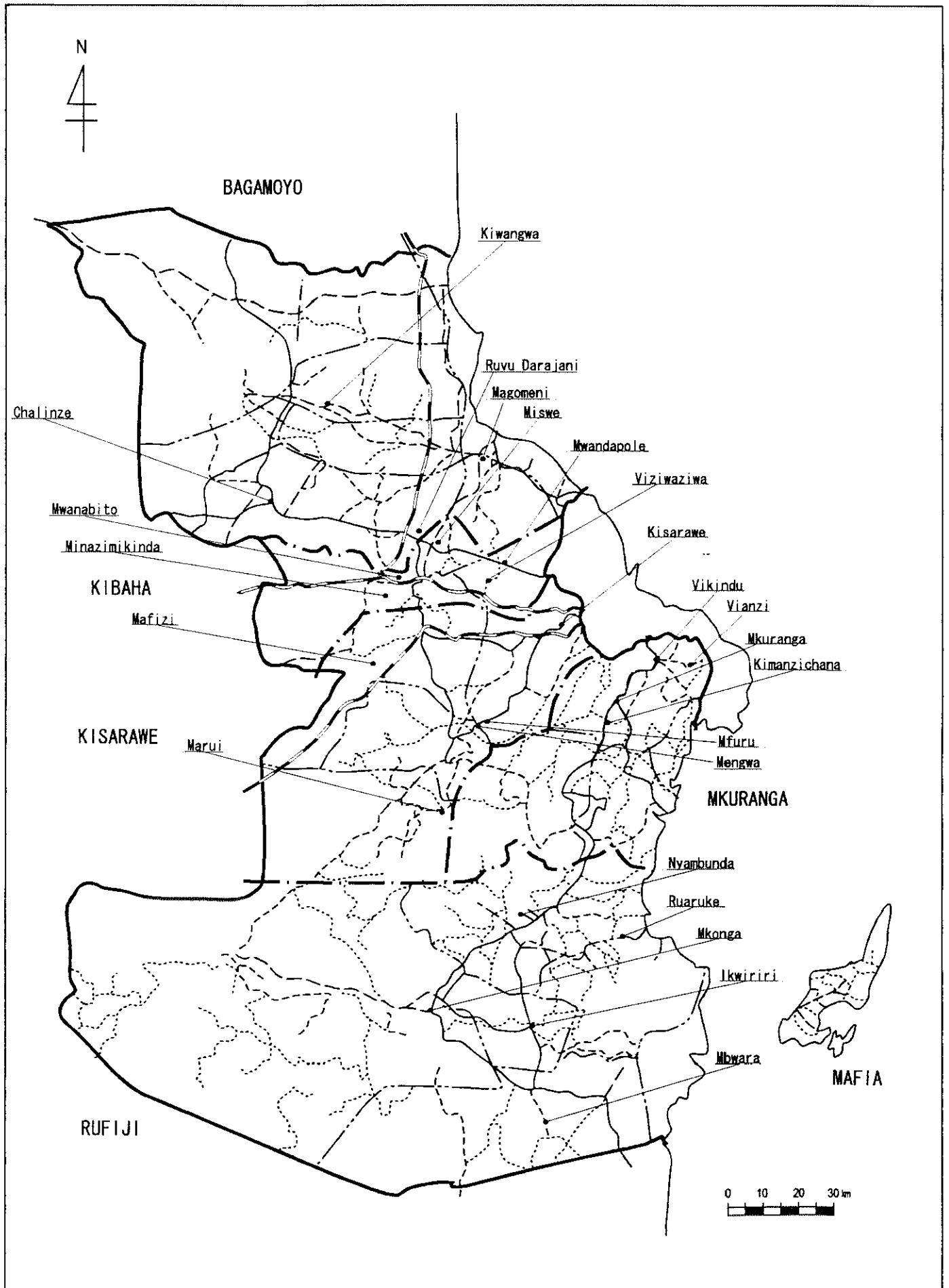


Fig. 3.5.1 Location Map of Villages Surveyed

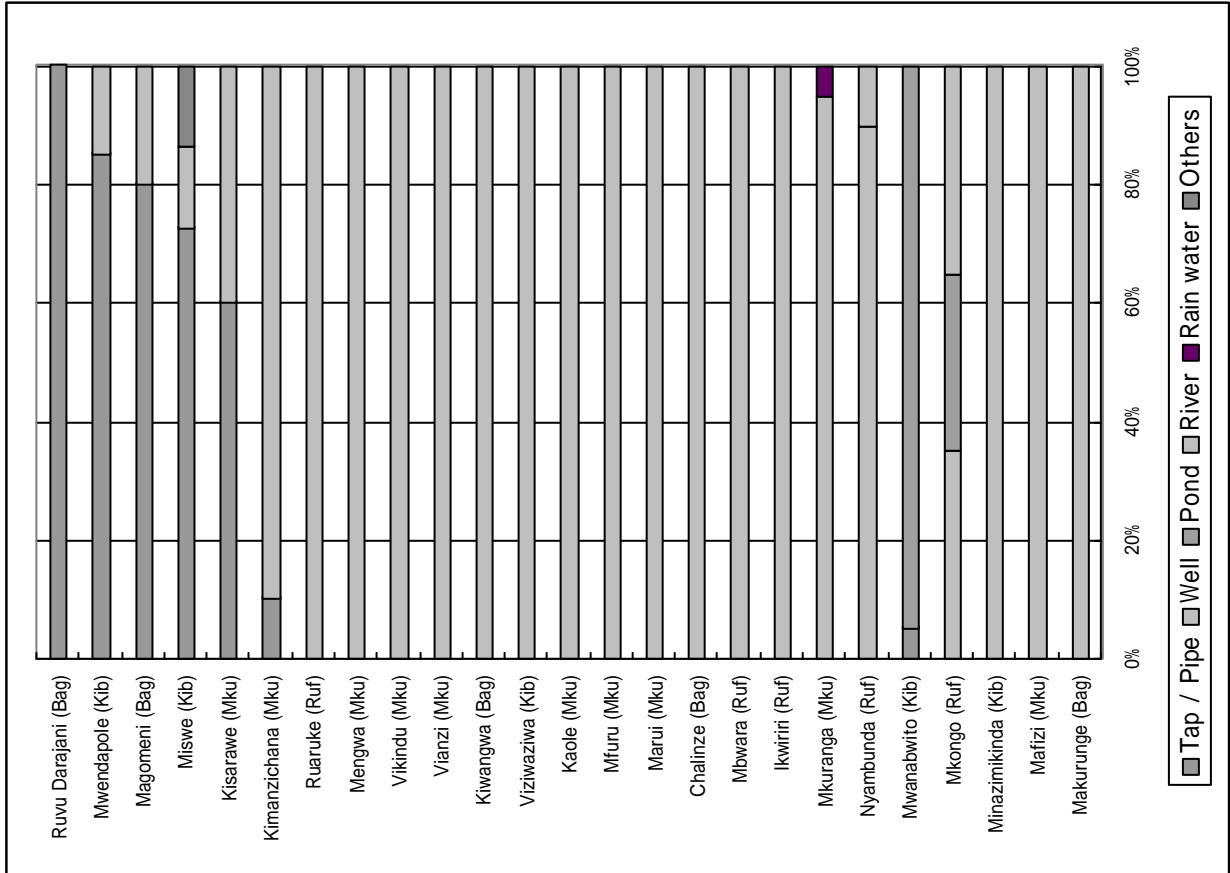
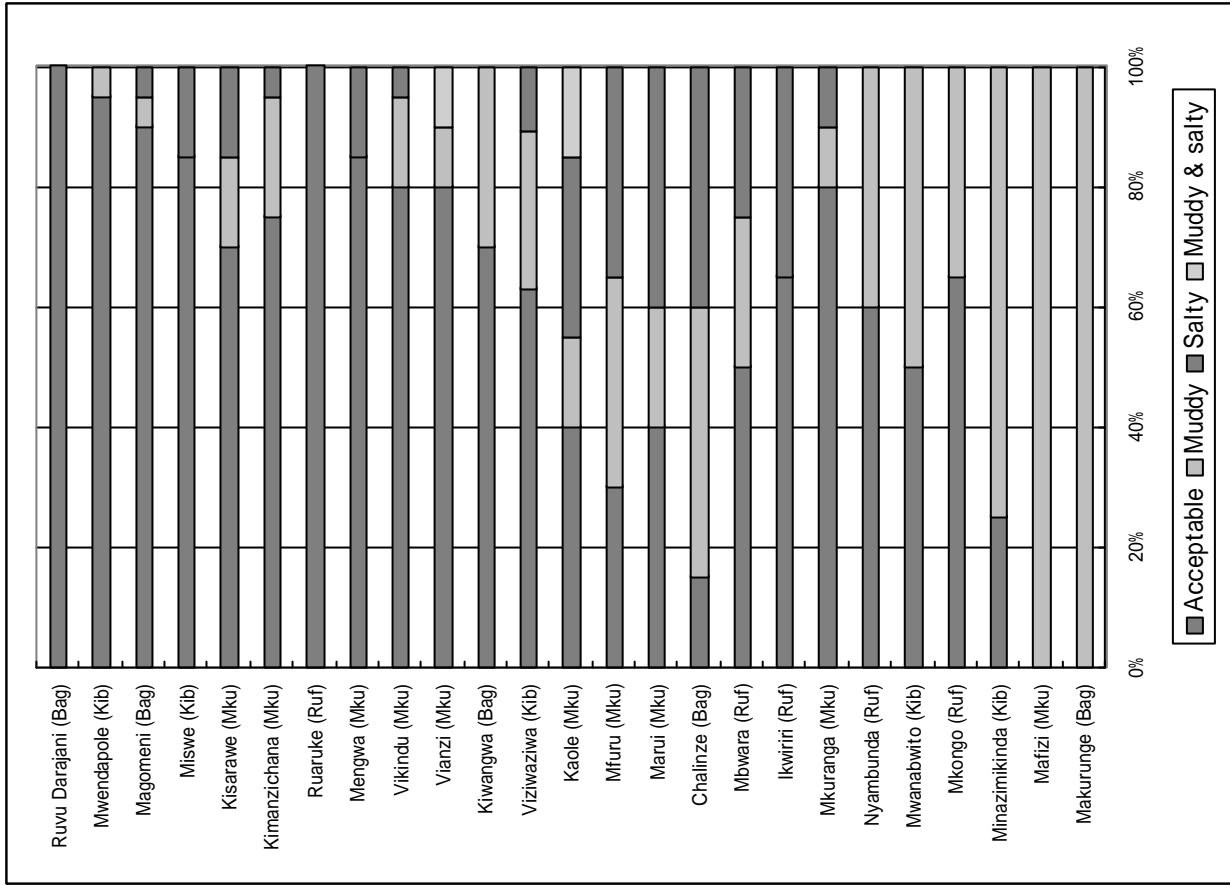


Fig. 3.5.2 Drinking Water Sources and Water Quality by Village

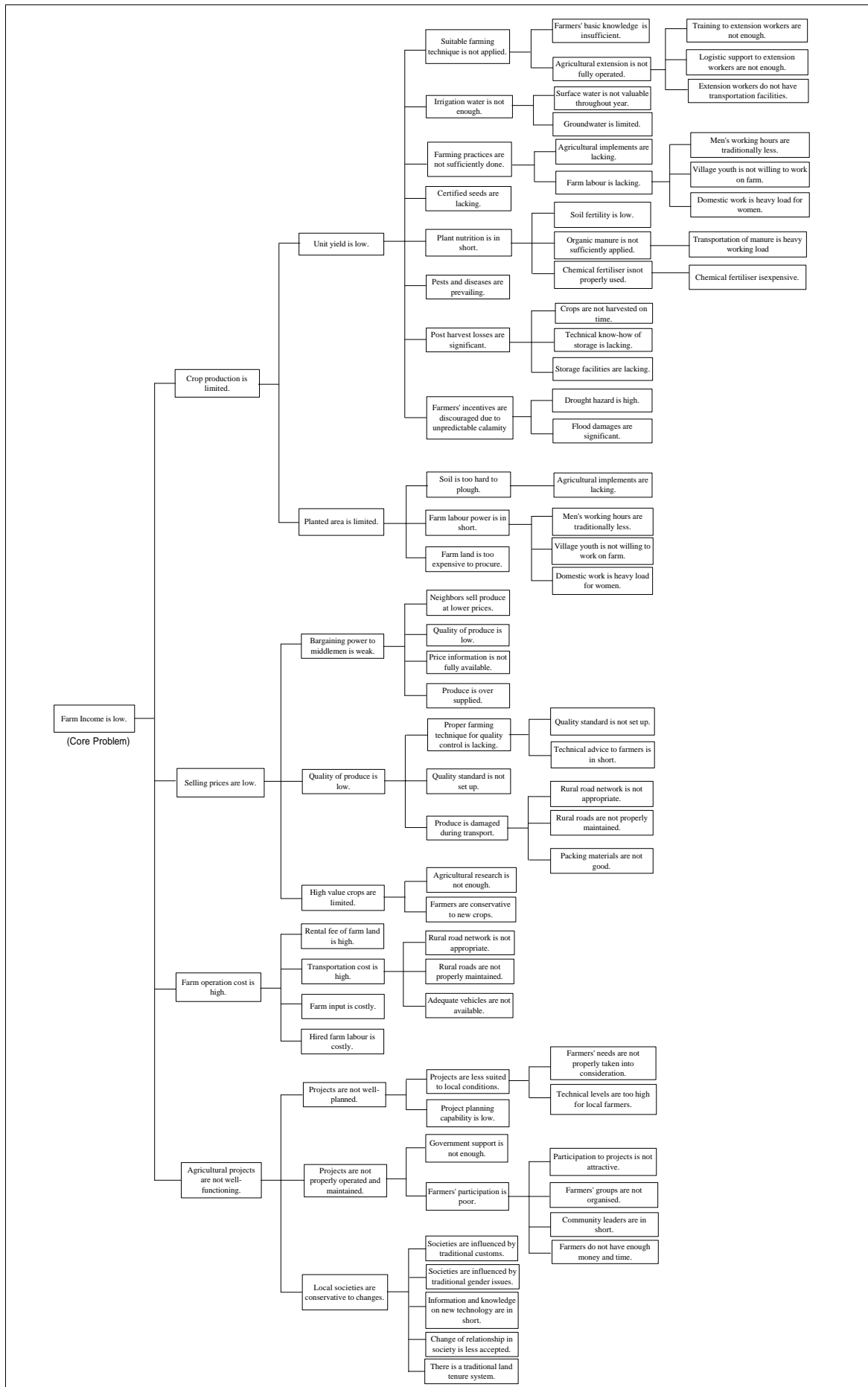


Fig. 4.1.1 Problem Tree Prepared in the PCM Workshop (25th and 26th November 1999)

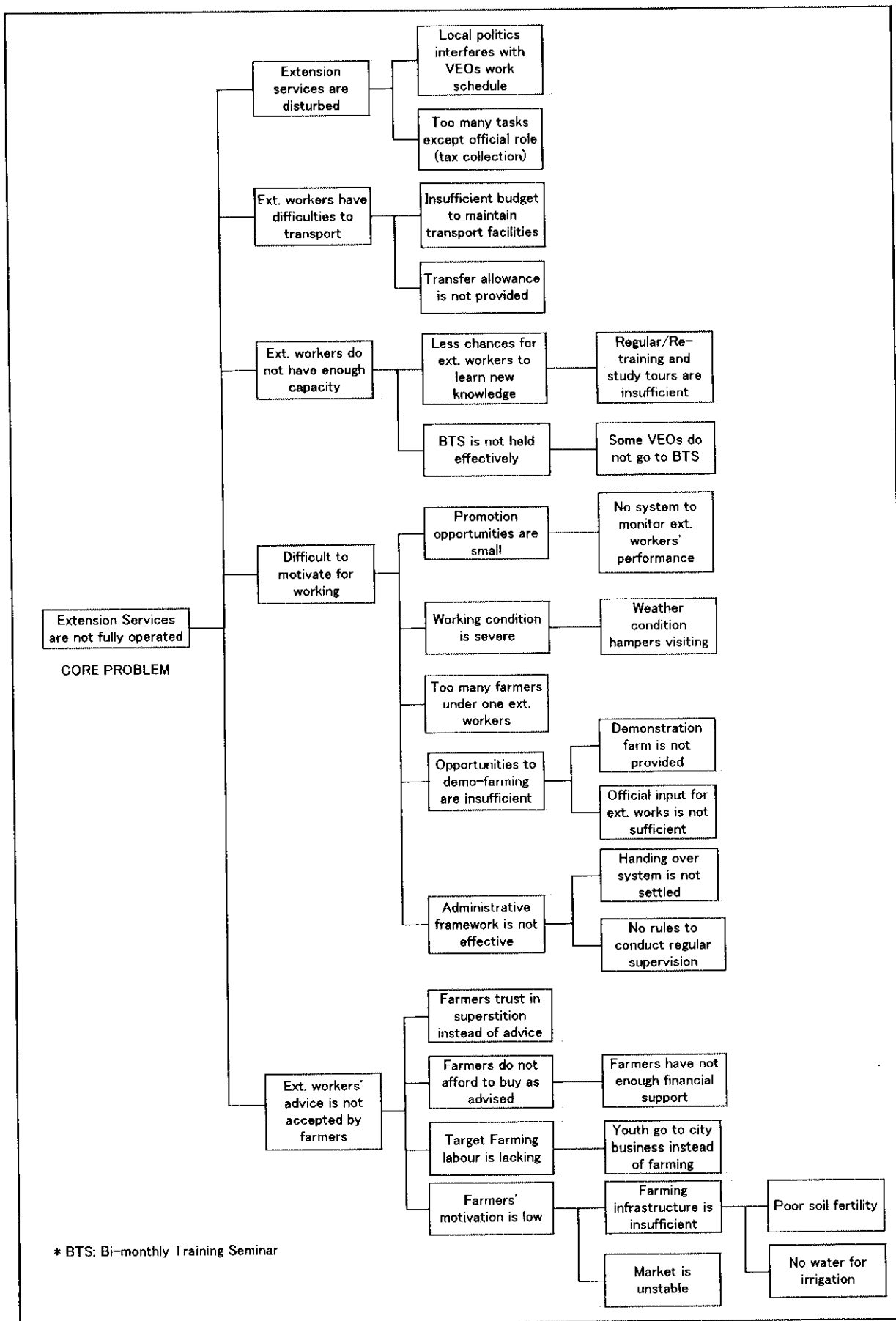


Fig. 4.1.2 Problem Tree Prepared in the PCM Workshop of Extension Officers (1st December 1999)

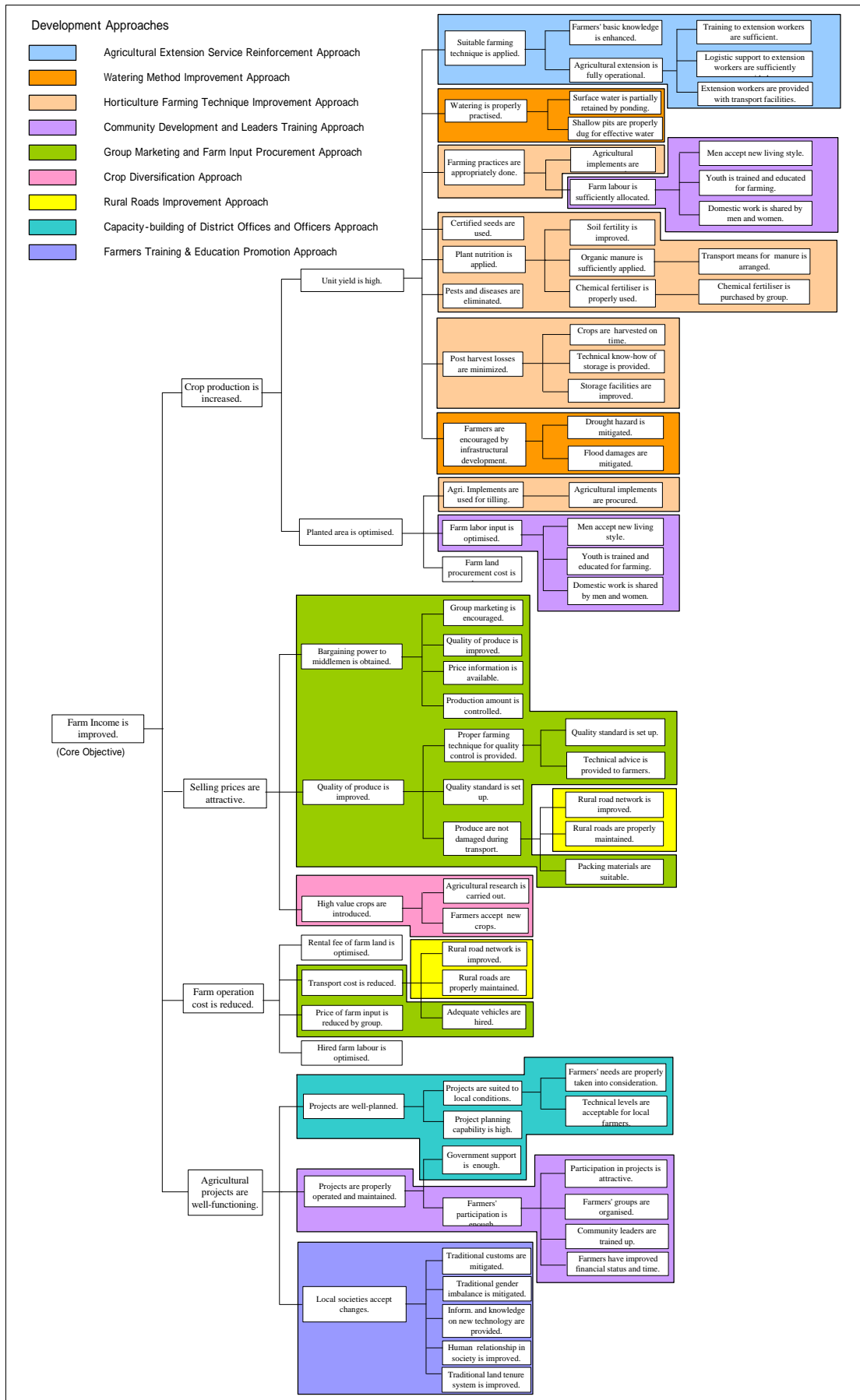
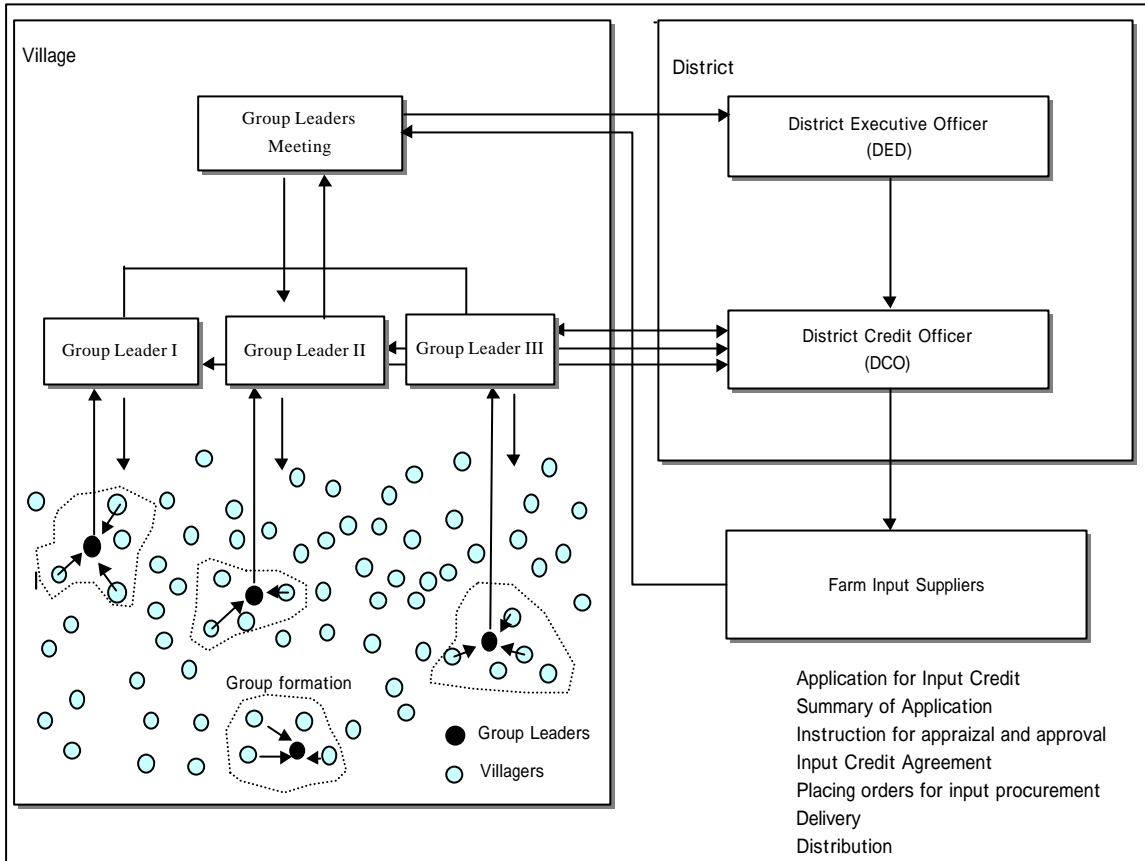


Fig. 5.2.1 Objective Tree and Development Approaches (Under Preparation)

APPLICATION & DELIVERY



REPAYMENT

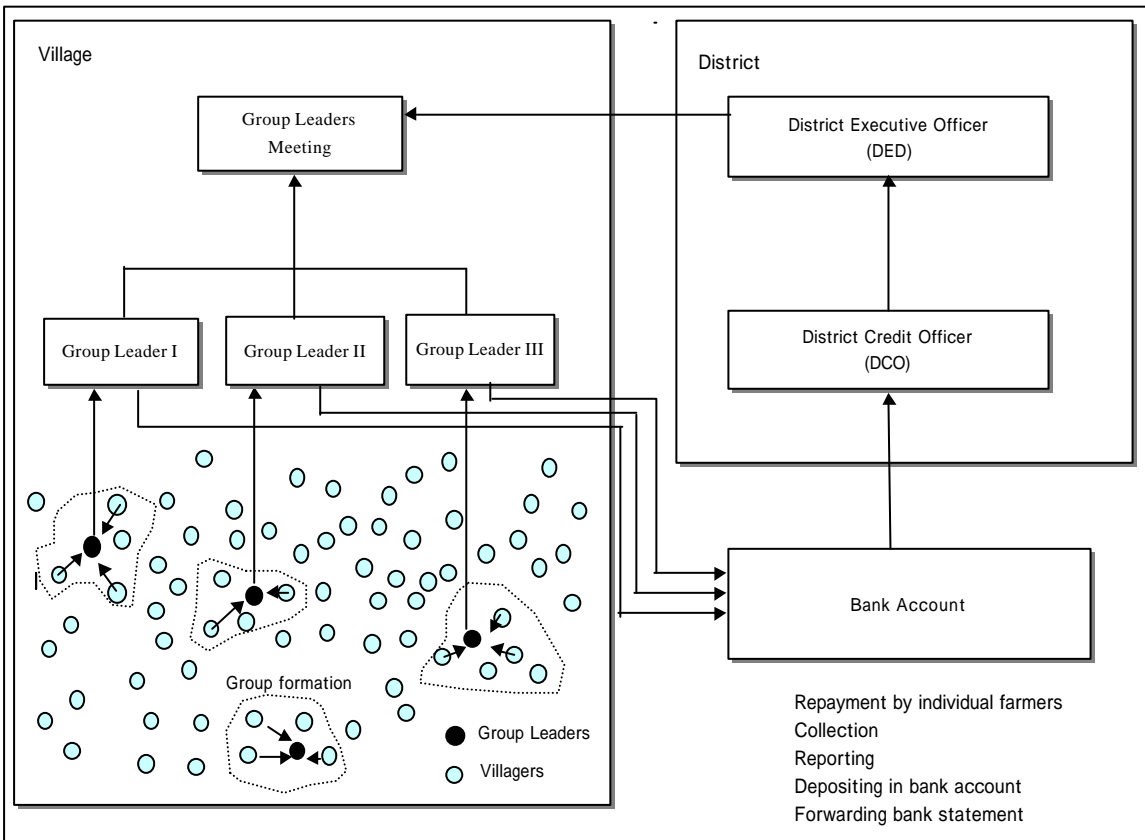


Fig. 5.3.1 Credit Transaction at Stage I (Action Plan)

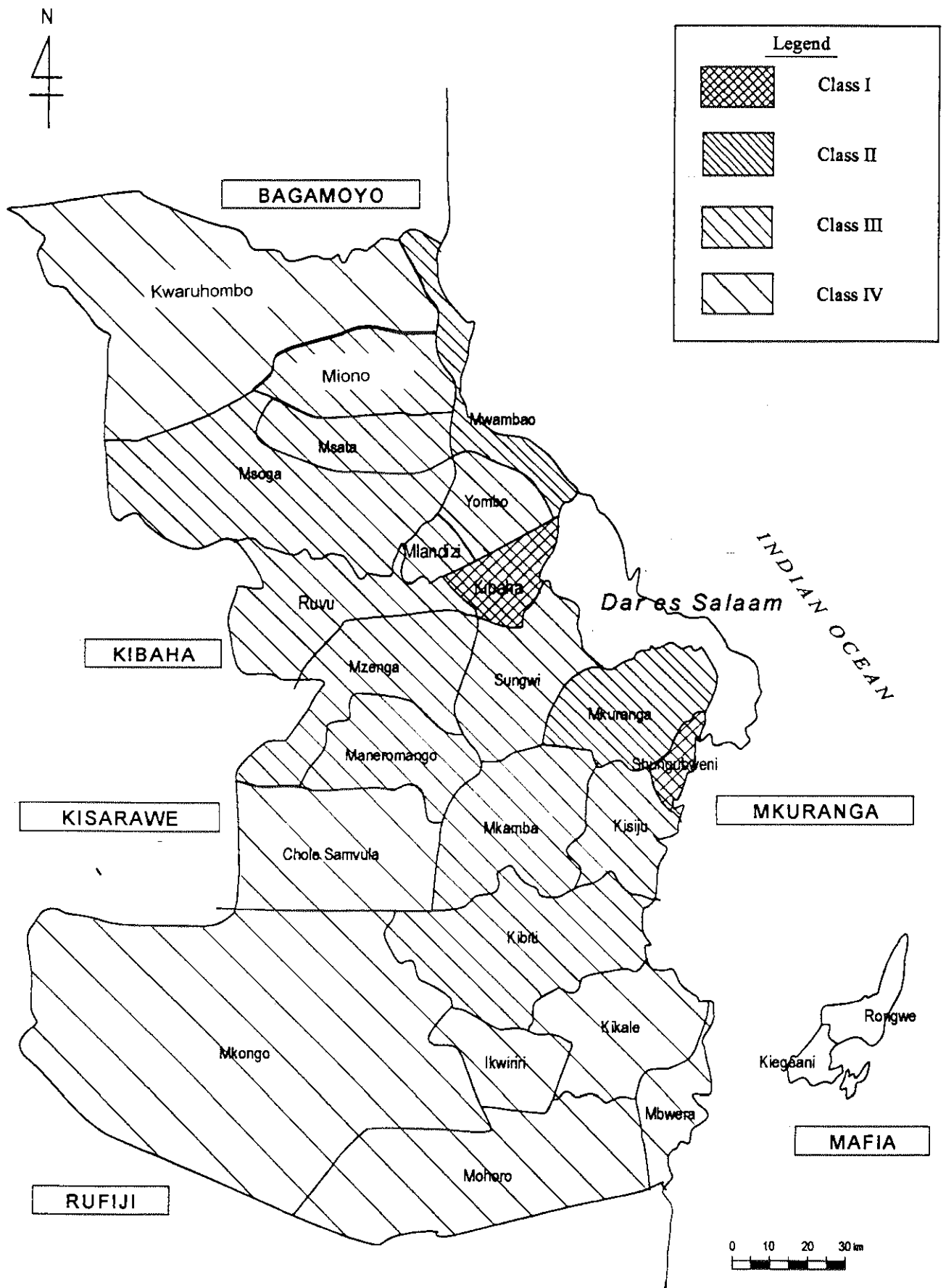


Fig. 6.2.1 Area Classification of Development Potential for Horticulture