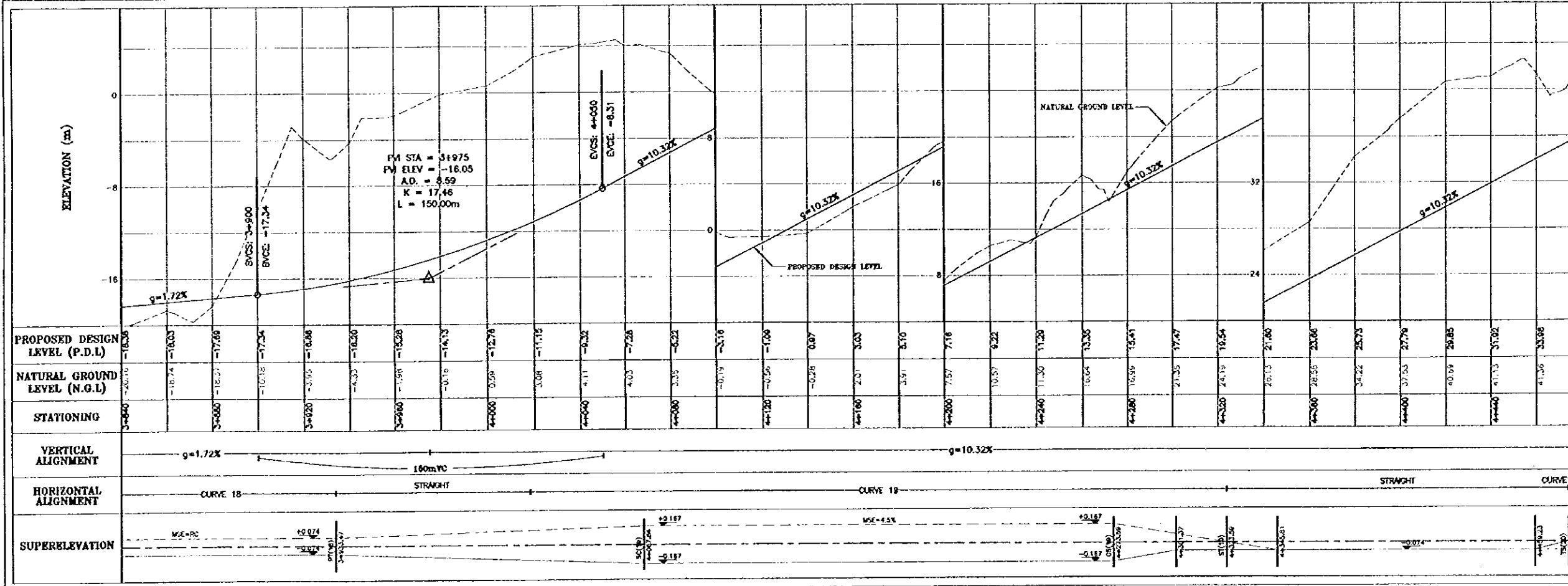
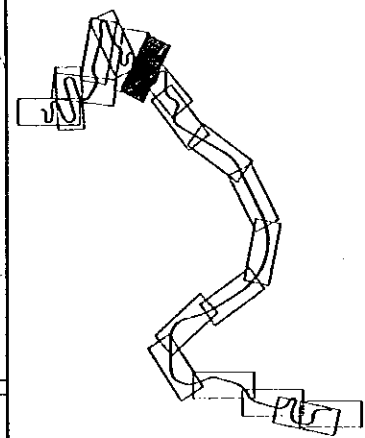


C(18)	
N	118301.82
E	205640.99
CIRCULAR CURVE	
Δ	18°48'21"
R	400.00m
T	88.24m
L	131.29m
MAX. SUPERELEVATION (s) = RC	
WIDENING (w) =	

C(19)	
N	118421.87
E	205792.65
SPIRAL CURVE	
L	50.00m
R	80.00m
Theta	17°54'18"
K	49.51m
Y	5.17m
Scn	15.82m
Lien	33.51m
MAX. SUPERELEVATION (s) = 4.5%	
WIDENING (w) = 1.40m	

- NOTES :-
- 1) ALL DIMENSIONS ARE IN METERS UNLESS OTHERWISE INDICATED.
 - 2) FOR GUARDRAIL, RETAINING WALLS AND BENCHMARKS INFORMATION SEE DRAWING No. DSPW - 08
 - 3) FOR CUT AND FILL SLOPES SEE RELEVANT CROSS SECTIONS.
 - 4) GUARDRAIL SHOULD ALWAYS BE ACCOMPANIED BY THE USE OF W-5b CHEVRON UNLESS OTHERWISE INSTRUCTED BY THE ENGINEER.
 - 5) 750mm DIA. PIPE CULVERTS DRAINING THE PAVED DITCHES ARE NOT SHOWN ON THE PROFILE.
 - 6) ALL SLOPE STAKE LINES, CUT & FILL BENCHES LINES ARE APPROXIMATE. EXACT LINES ARE TO BE DETERMINED ON SITE BY THE CONTRACTOR TO THE APPROVAL OF THE ENGINEER.
 - 7) DO NOT SCALE FROM THESE DRAWINGS.



Project:
Tourism Sector Development Project
in the Hashemite Kingdom of Jordan

Executing Agency:
The Ministry of Tourism and Antiquities
The Ministry of Planning

SUB-PROJECT:
Dead Sea Parkway

Notes:
This detailed design has been executed by a team of consultants as shown below in accordance with the agreement between Japan International Cooperation Agency (JICA) and JICA Study Team. The copyright of this drawing rests with JICA

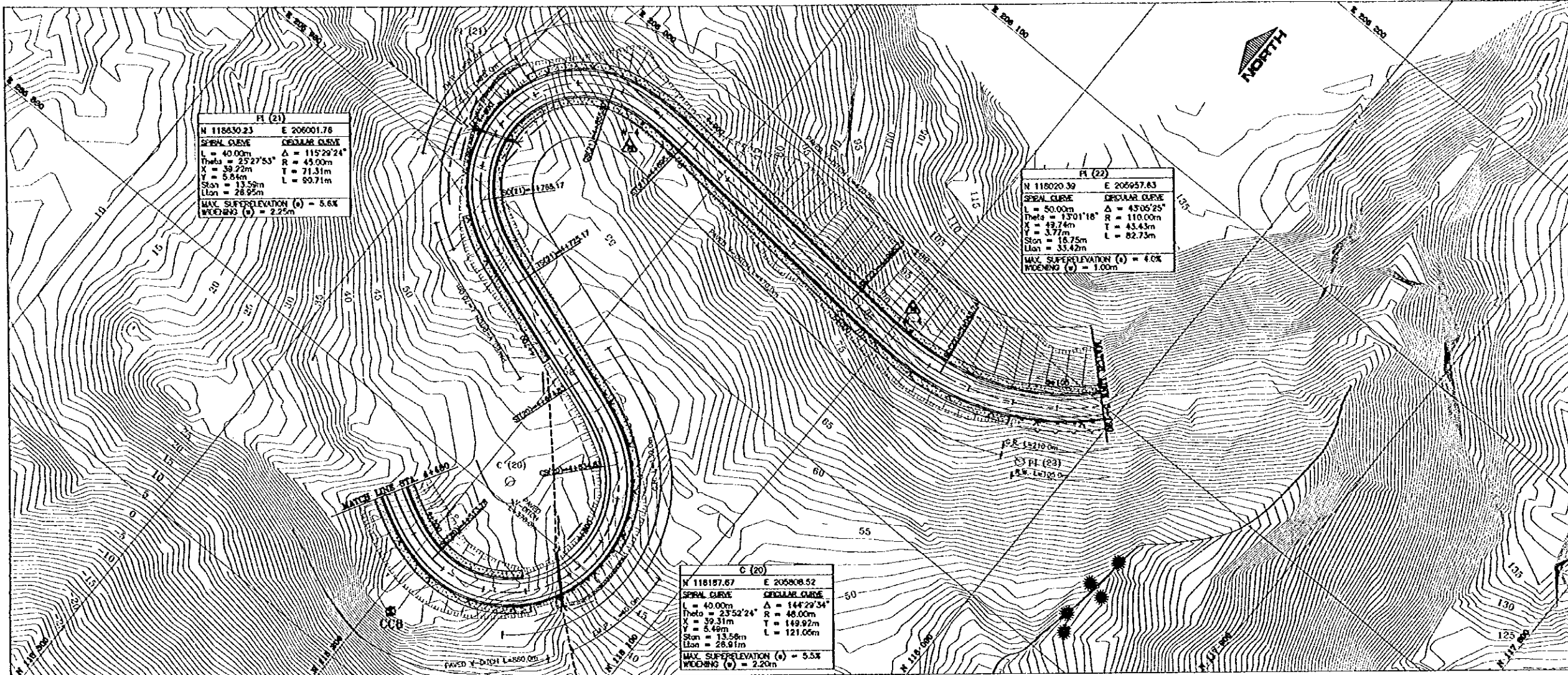
Designed by:
Japan International Cooperation Agency (JICA)

JICA Study Team:
Joint Venture of
Pacific Consultants International and
Yamashita Sekkei Inc.

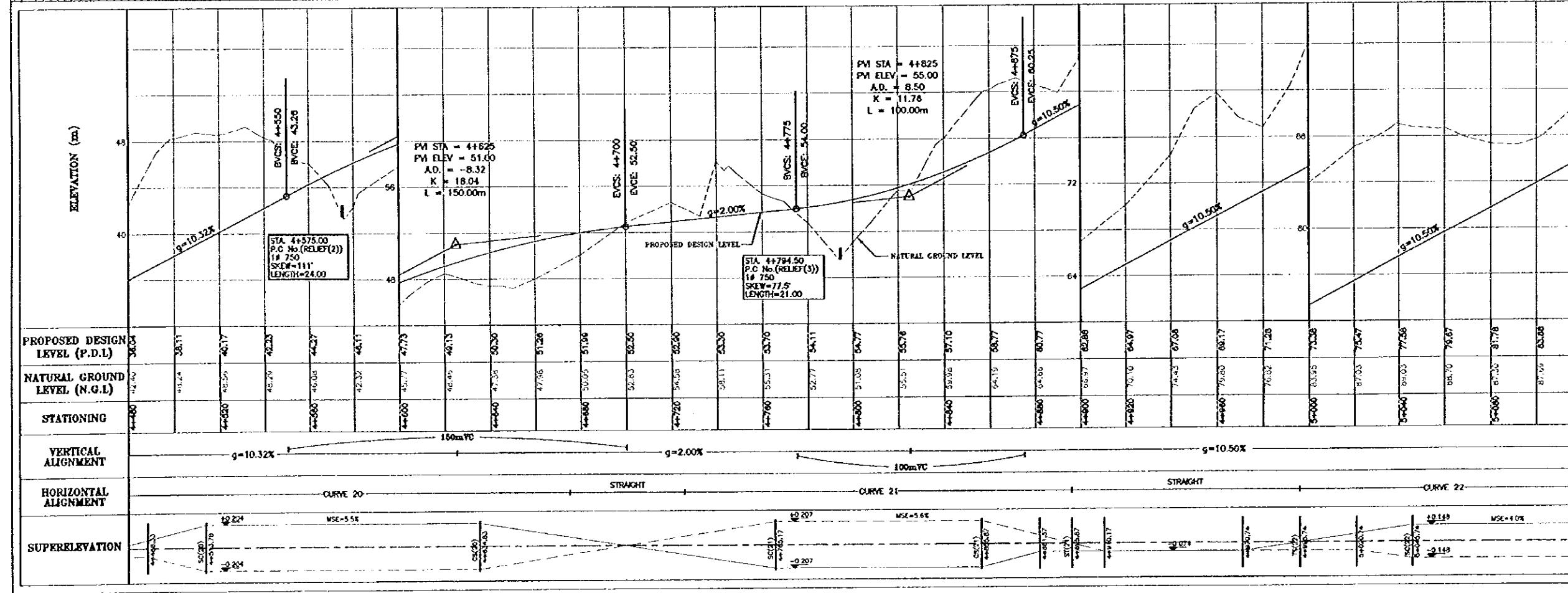
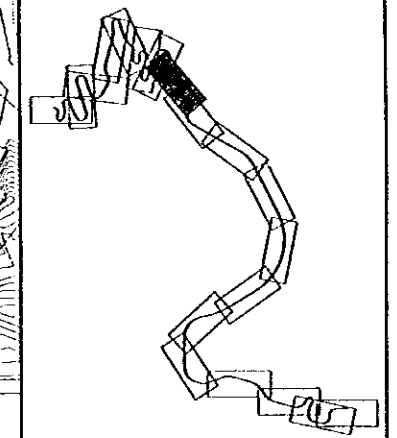
Subcontracted Local Consultant:
consolidated consultants
engineering & environment
Tel: 011277 - Fax: 011280 - AMM - JORDAN

Drawing Title:
PLAN - PROFILE
STA.3+840 - STA.4+480

Scale: H 1:1000
V 1:200
Drawing No.: DSPW-17



- NOTES :-**
- 1) ALL DIMENSIONS ARE IN METERS UNLESS OTHERWISE INDICATED .
 - 2) FOR GUARDRAIL , RETAINING WALLS AND BENCHMARKS INFORMATION SEE DRAWING No. DSPW - 06
 - 3) FOR CUT AND FILL SLOPES SEE RELEVANT CROSS SECTIONS .
 - 4) GUARDRAIL SHOULD ALWAYS BE ACCOMPANIED BY THE USE OF W-56 CHEVRON UNLESS OTHERWISE INSTRUCTED BY THE ENGINEER .
 - 5) 750mm DIA. PIPE CULVERTS DRAINING THE PAVED DITCHES ARE NOT SHOWN ON THE PROFILE.
 - 6) ALL SLOPE STAKE LINES, CUT & FILL BENCHES LINES ARE APPROXIMATE. EXACT LINES ARE TO BE DETERMINED ON SITE BY THE CONTRACTOR TO THE APPROVAL OF THE ENGINEER.
 - 7) DO NOT SCALE FROM THESE DRAWINGS.



Project:
Tourism Sector Development Project
in the Hashemite Kingdom of Jordan

Executing Agency:
The Ministry of Tourism and Antiquities
The Ministry of Planning

SUB-PROJECT:
Dead Sea Parkway

Note:
This detailed design has been executed by a team of consultants as shown below in accordance with the agreement between Japan International Cooperation Agency (JICA) and JICA Study Team. The copyright of this drawing rests with JICA.

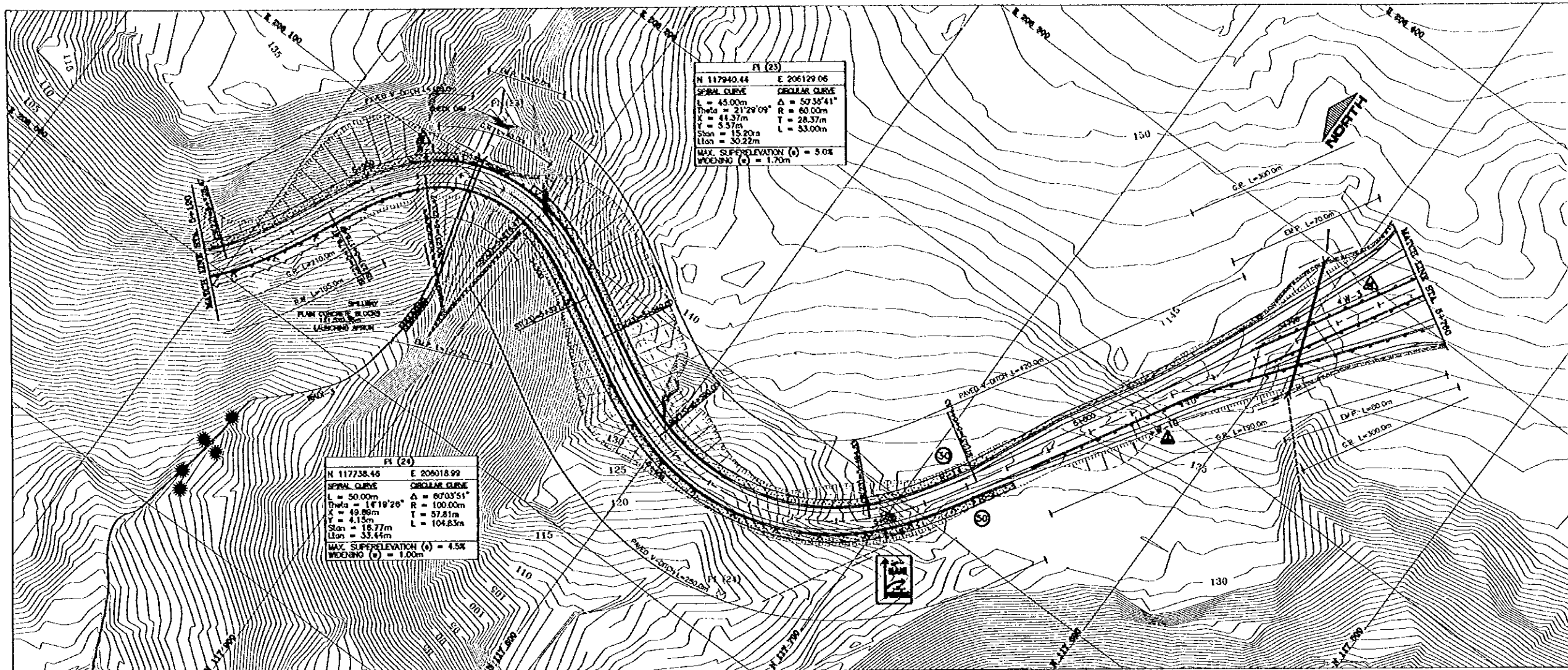
Designed by:
Japan International Cooperation Agency (JICA)

JICA Study Team:
Joint Venture of Pacific Consultants International and Yamashita Sekkei Inc.

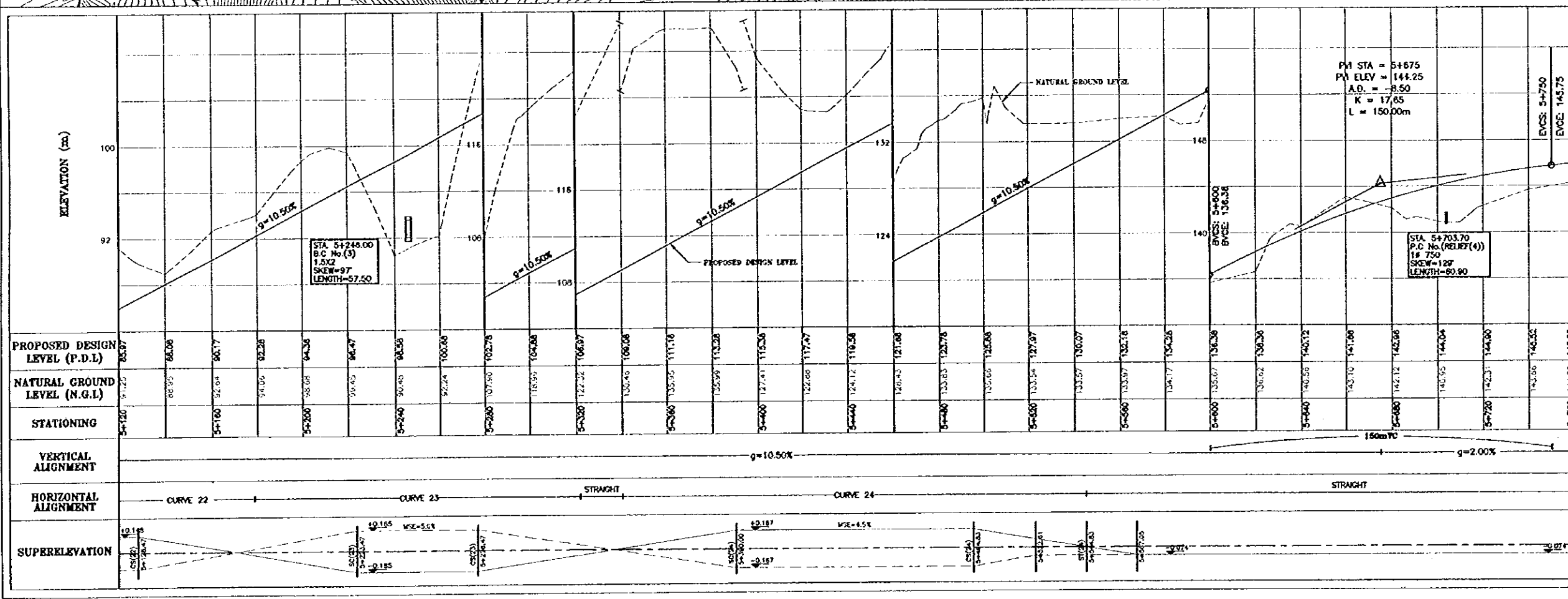
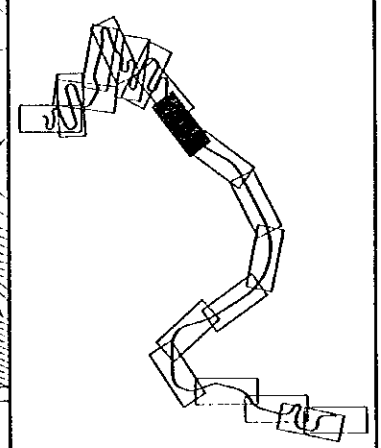
Subcontracted Local Consultant:
consolidated consultants
engineering & environment
Tel: 9623377 - Fax: 9623380 - AMM - JORDAN

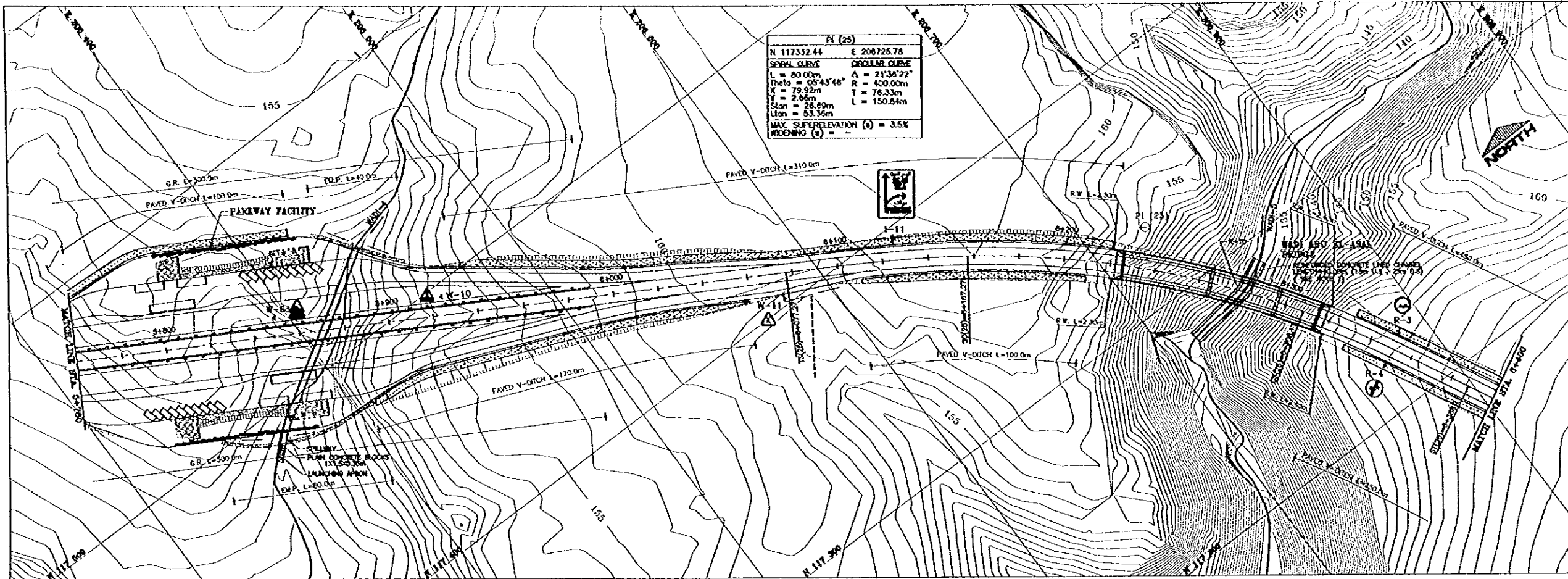
Drawing Title:
PLAN - PROFILE
STA.4+480 - STA.5+120

Scale: H 1:1000 V 1:200 **Drawing No.:** DSPW-18

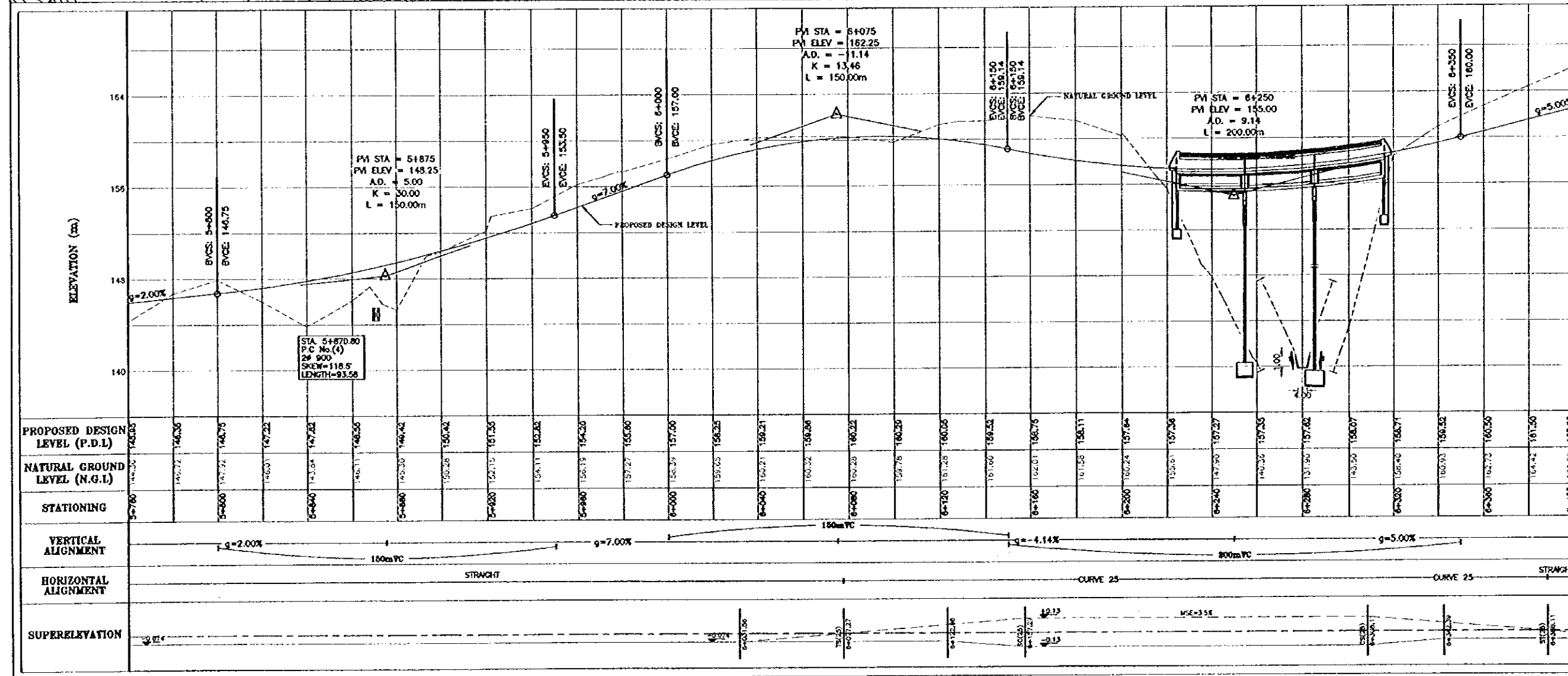
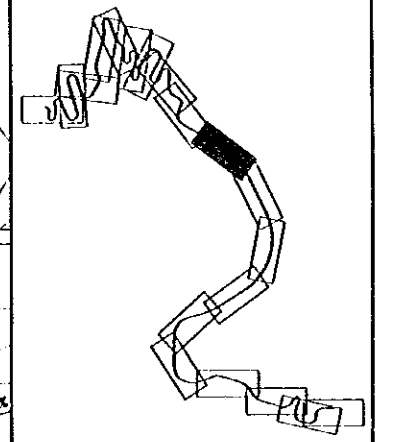


- NOTES :-**
- 1) ALL DIMENSIONS ARE IN METERS UNLESS OTHERWISE INDICATED.
 - 2) FOR GUARDRAIL, RETAINING WALLS AND BENCHMARKS INFORMATION SEE DRAWING No. DSPW - 06
 - 3) FOR CUT AND FILL SLOPES SEE RELEVANT CROSS SECTIONS.
 - 4) GUARDRAIL SHOULD ALWAYS BE ACCOMPANIED BY THE USE OF W-5b CHEVRON UNLESS OTHERWISE INSTRUCTED BY THE ENGINEER.
 - 5) FOR PARKWAY FACILITY DETAILS SEE DRAWINGS No. DSPW-45 TO DSPW-50.
 - 6) 750mm DIA. PIPE CULVERTS DRAINING THE PAVED DITCHES ARE NOT SHOWN ON THE PROFILE.
 - 7) ALL SLOPE STAKE LINES, CUT & FILL BENCHES LINES ARE APPROXIMATE. EXACT LINES ARE TO BE DETERMINED ON SITE BY THE CONTRACTOR TO THE APPROVAL OF THE ENGINEER.
 - 8) DO NOT SCALE FROM THESE DRAWINGS.





- NOTES :-**
- 1) ALL DIMENSIONS ARE IN METERS UNLESS OTHERWISE INDICATED .
 - 2) FOR GUARDRAIL , RETAINING WALLS AND BENCHMARKS INFORMATION SEE DRAWING No. DSPW - 06
 - 3) FOR CUT AND FILL SLOPES SEE RELEVANT CROSS SECTIONS .
 - 4) GUARDRAIL SHOULD ALWAYS BE ACCOMPANIED BY THE USE OF W-56 CHEVRON UNLESS OTHERWISE INSTRUCTED BY THE ENGINEER .
 - 5) FOR PARKWAY FACILITY GEOMETRIC DESIGN , MARKING AND SIGNING SEE DRAWINGS No. DSPW-45 TO DSPW-50
 - 6) FOR WADI ABU EL-ASAL BRIDGE DETAILS SEE DRAWINGS No. DSPW-60 TO DSPW-93.
 - 7) FOR REINFORCED CONCRETE CHANNEL DETAILS SEE STANDARD DRAINAGE DRAWINGS
 - 8) 750mm DIA. PIPE CULVERTS DRAINING THE PAVED DITCHES ARE NOT SHOWN ON THE PROFILE.
 - 9) ALL SLOPE STAKE LINES, CUT & FILL BENCHES LINES ARE APPROXIMATE. EXACT LINES ARE TO BE DETERMINED ON SITE BY THE CONTRACTOR TO THE APPROVAL OF THE ENGINEER.
 - 10) DO NOT SCALE FROM THESE DRAWINGS.



Project:
Tourism Sector Development Project
in the Hashemite Kingdom of Jordan

Executing Agency:
The Ministry of Tourism and Antiquities
The Ministry of Planning

SUB-PROJECT:
Dead Sea Parkway

Note:
This detailed design has been executed by a team of consultants as shown below in accordance with the agreement between Japan International Cooperation Agency (JICA) and JICA Study Team. The copyright of this drawing rests with JICA.

Designed by:
Japan International Cooperation Agency (JICA)

JICA Study Team:
Joint Venture of Pacific Consultants International and Yamashita Sekkel Inc.

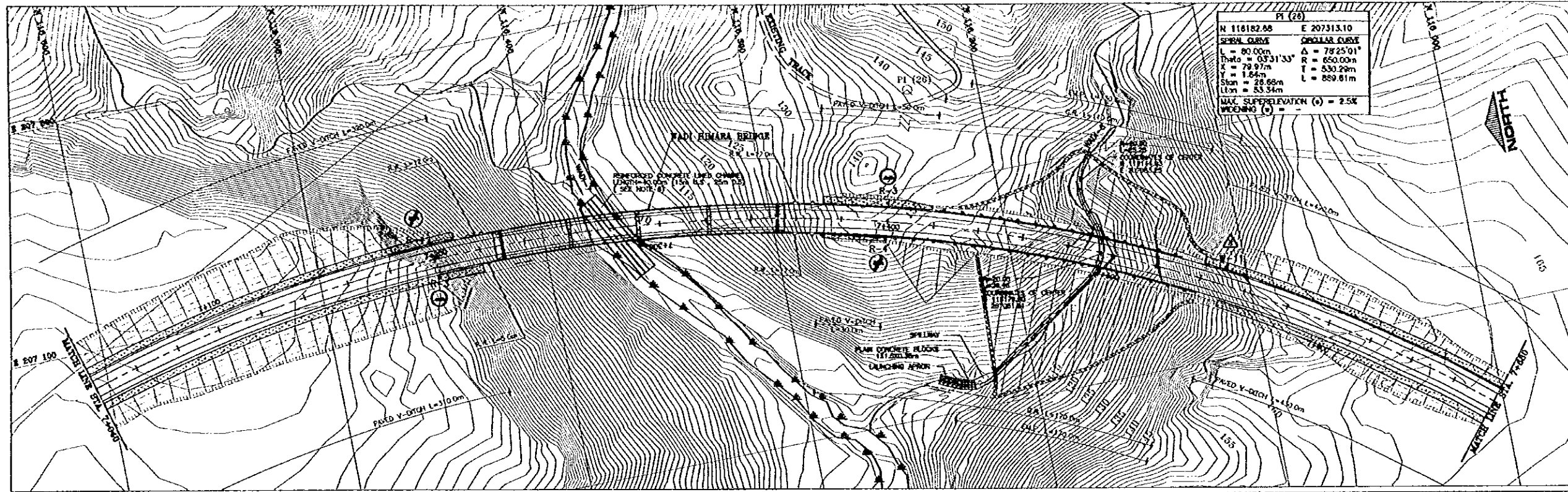
Subcontracted Local Consultant:
consolidated consultants
engineering & environment
Tel: 0112277 - Fax: 0112280 - AMMAN - JORDAN

Date: June 2000

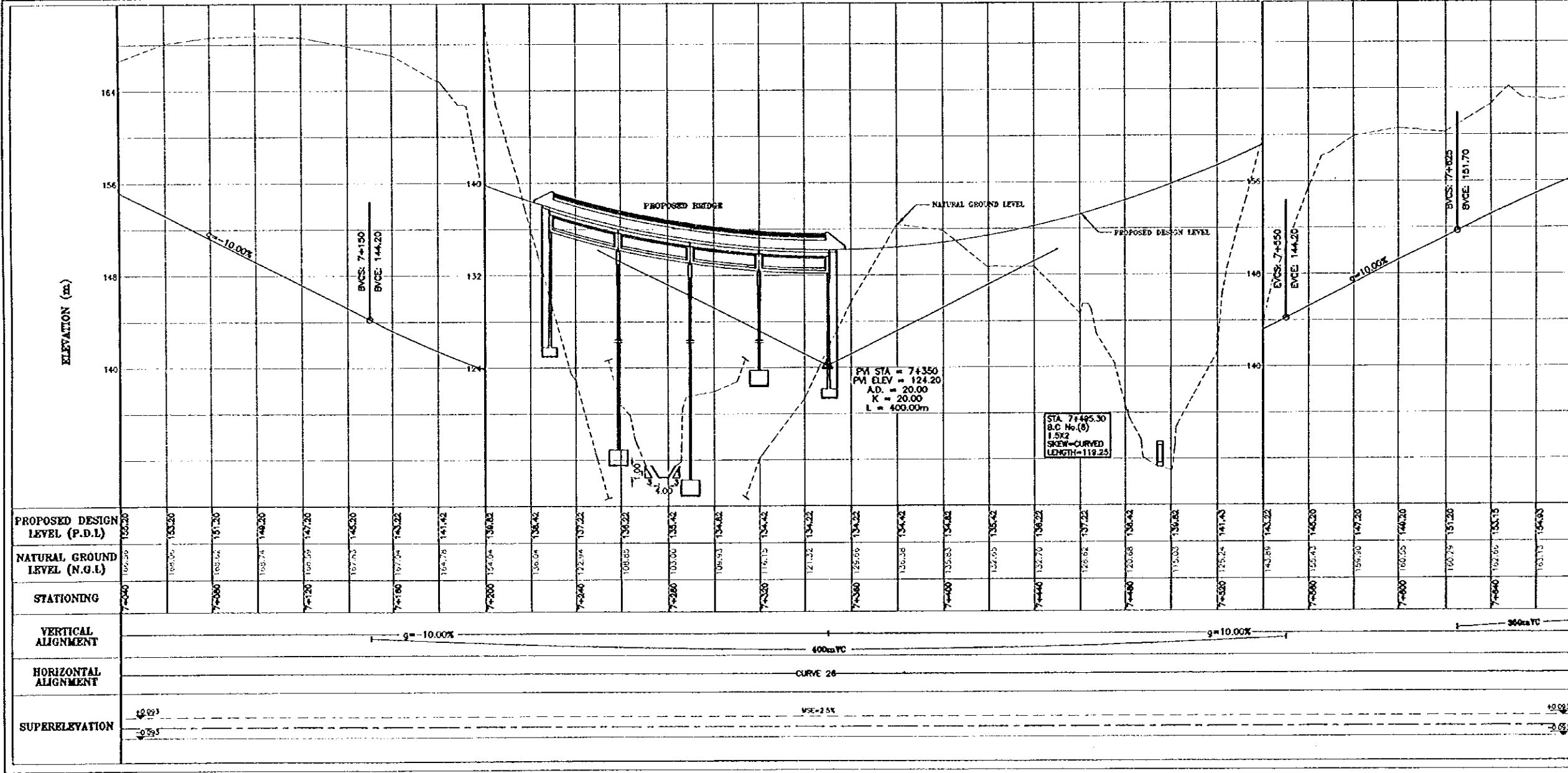
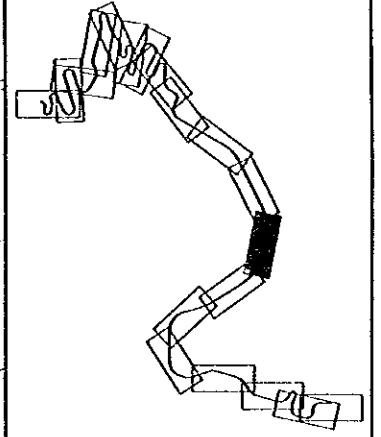
Drawing Title:
PLAN - PROFILE
STA.5+760 - STA.6+400

Scale: H 1:1000
V 1:200

Drawing No.: DSPW-20



- NOTES :-**
- 1) ALL DIMENSIONS ARE IN METERS UNLESS OTHERWISE INDICATED .
 - 2) FOR GUARDRAIL , RETAINING WALLS AND BENCHMARKS INFORMATION SEE DRAWING No. DSPW - 06
 - 3) FOR CUT AND FILL SLOPES SEE RELEVANT CROSS SECTIONS .
 - 4) GUARDRAIL SHOULD ALWAYS BE ACCOMPANIED BY THE USE OF W-55 CHEVRON UNLESS OTHERWISE INSTRUCTED BY THE ENGINEER .
 - 5) FOR WADI HIMARA BRIDGE DETAILS SEE DRAWINGS No. DSPW-60 TO DSPW-93.
 - 6) FOR REINFORCED CONCRETE CHANNEL DETAILS SEE STANDARD DRAINAGE DRAWINGS
 - 7) 250mm DIA. PIPE CULVERTS DRAINING THE PAVED DITCHES ARE NOT SHOWN ON THE PROFILE.
 - 8) ALL SLOPE STAKE LINES, CUT & FILL BENCHES LINES ARE APPROXIMATE. EXACT LINES ARE TO BE DETERMINED ON SITE BY THE CONTRACTOR TO THE APPROVAL OF THE ENGINEER.
 - 9) DO NOT SCALE FROM THESE DRAWINGS.



Project:
Tourism Sector Development Project
in the Hashemite Kingdom of Jordan

Executing Agency:
The Ministry of Tourism and Antiquities
The Ministry of Planning

SUB-PROJECT:
Dead Sea Parkway

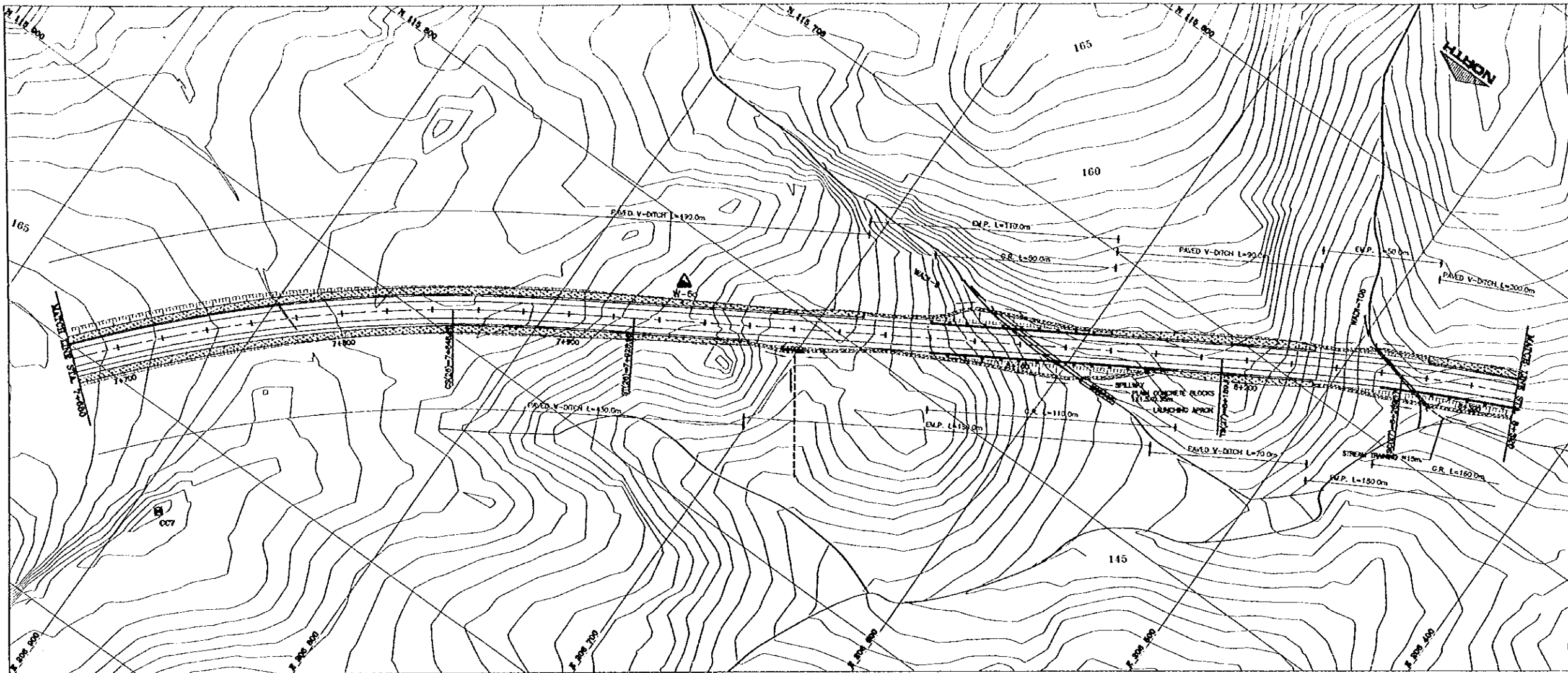
Note:
This detailed design has been executed by a team of consultants as shown below in accordance with the agreement between Japan International Cooperation Agency (JICA) and JICA Study Team. The copyright of this drawing rests with JICA.

Designed by:
Japan International Cooperation Agency (JICA)
JICA Study Team:
Joint Venture of Pacific Consultants International and Yamashita Sekkel Inc.

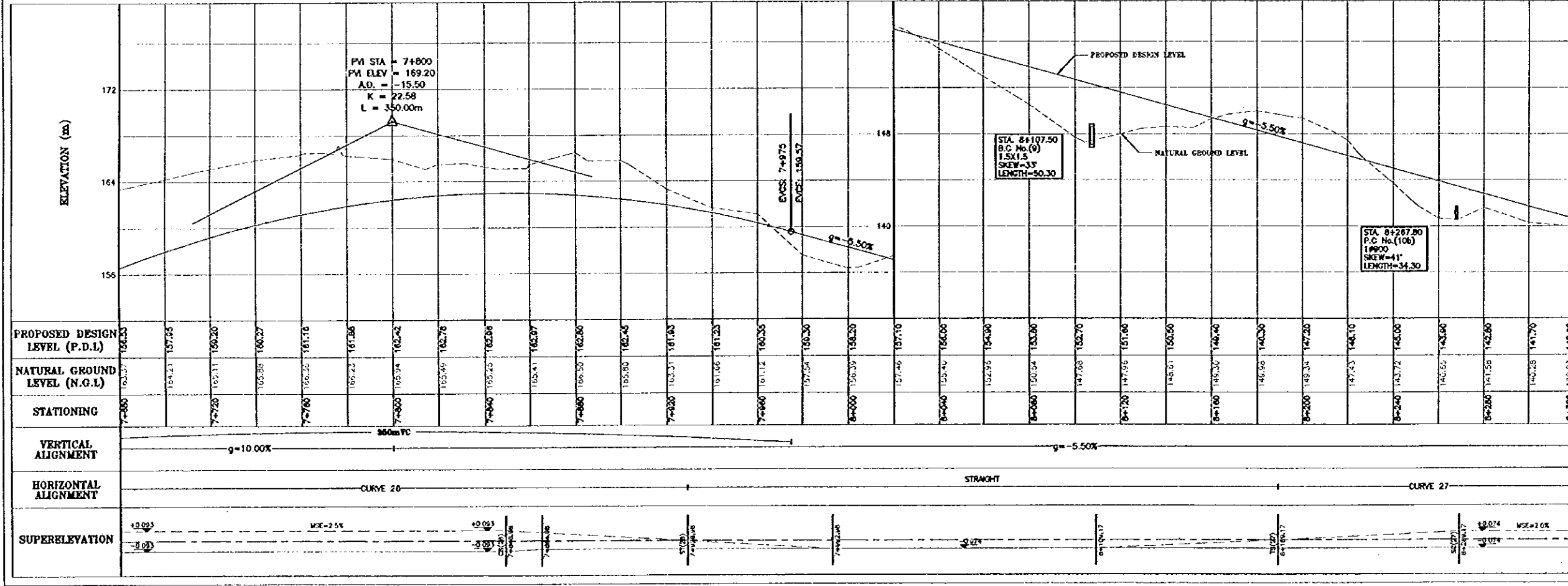
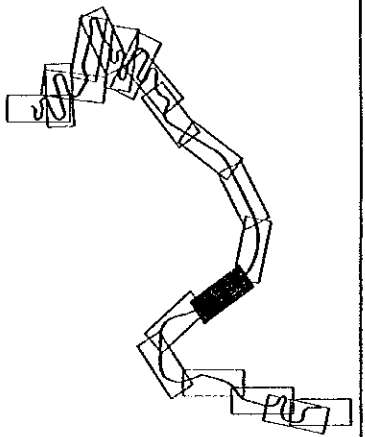
Subcontracted Local Consultant:
consolidated consultants
14, #1237 - Fax #1230 - AMM - JORDAN

Drawing Title:
PLAN - PROFILE
STA.7+040 - STA.7+680

Scale: H 1:1000 V 1:200 **Drawing No.:** DSPW-22



- NOTES :-**
- 1) ALL DIMENSIONS ARE IN METERS UNLESS OTHERWISE INDICATED.
 - 2) FOR GUARDRAIL, RETAINING WALLS AND BENCHMARKS INFORMATION SEE DRAWING No. DSPW - 06
 - 3) FOR CUT AND FILL SLOPES SEE RELEVANT CROSS SECTIONS.
 - 4) GUARDRAIL SHOULD ALWAYS BE ACCOMPANIED BY THE USE OF W-56 CHEVRON UNLESS OTHERWISE INSTRUCTED BY THE ENGINEER.
 - 5) 750mm DIA. PIPE CULVERTS DRAINING THE PAVED DITCHES ARE NOT SHOWN ON THE PROFILE.
 - 6) ALL SLOPE STAKE LINES, CUT & FILL BENCHES LINES ARE APPROXIMATE. EXACT LINES ARE TO BE DETERMINED ON SITE BY THE CONTRACTOR TO THE APPROVAL OF THE ENGINEER.
 - 7) DO NOT SCALE FROM THESE DRAWINGS.



Project:
Tourism Sector Development Project in the Hashemite Kingdom of Jordan

Executing Agency:
The Ministry of Tourism and Antiquities
The Ministry of Planning

SUB-PROJECT:
Dead Sea Parkway

Note:
This detailed design has been executed by a team of consultants as shown below in accordance with the agreement between Japan International Cooperation Agency (JICA) and JICA Study Team. The copyright of this drawing rests with JICA.

Designed by:
Japan International Cooperation Agency (JICA)

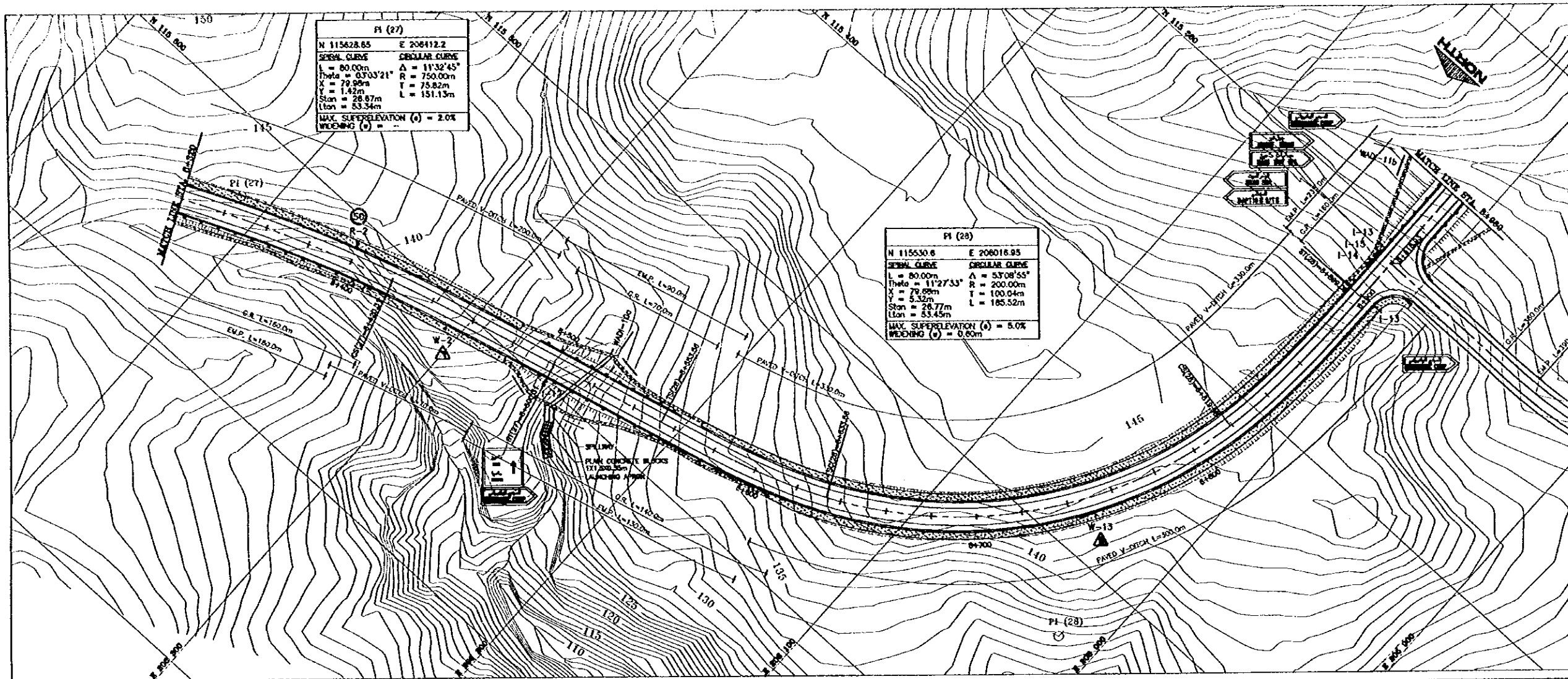
JICA Study Team:
Joint Venture of Pacific Consultants International and Yamamoto Sekkel Inc.

Subcontracted Local Consultant:
consolidated consultants
Engineering & Environment
Tel: 995377 - Fax: 995280 - 995991 - 200001

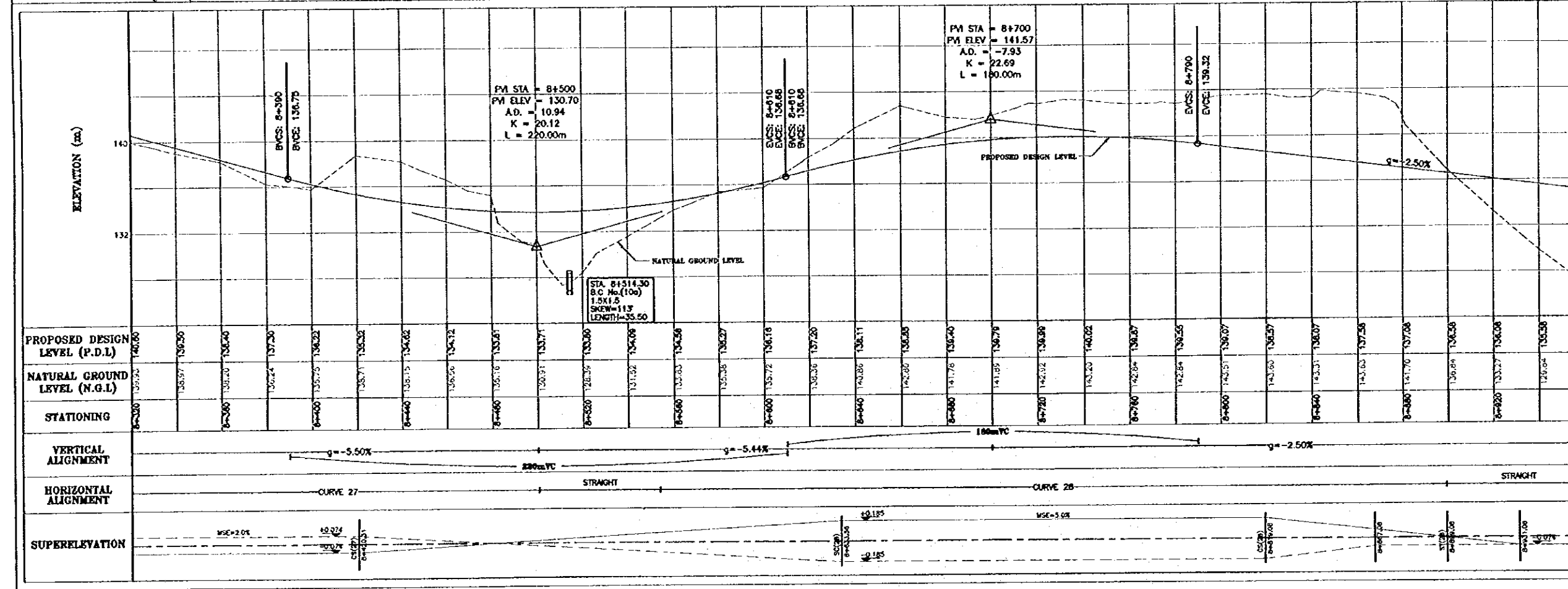
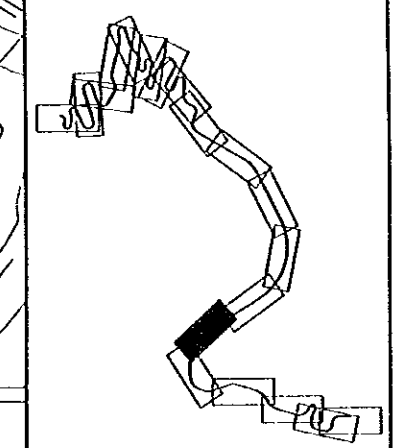
Date: June 2000

Drawing Title:
PLAN - PROFILE
STA.7+680 - STA.8+320

Scale: H 1:1000 V 1:200 **Drawing No.:** DSPW - 23



- NOTES :-**
- 1) ALL DIMENSIONS ARE IN METERS UNLESS OTHERWISE INDICATED.
 - 2) FOR GUARDRAIL, RETAINING WALLS AND BENCHMARKS INFORMATION SEE DRAWING No. DSPW - 06
 - 3) FOR CUT AND FILL SLOPES SEE RELEVANT CROSS SECTIONS.
 - 4) GUARDRAIL SHOULD ALWAYS BE ACCOMPANIED BY THE USE OF W-56 CHEYRON UNLESS OTHERWISE INSTRUCTED BY THE ENGINEER.
 - 5) 750mm DIA. PIPE CULVERTS DRAINING THE PAVED DITCHES ARE NOT SHOWN ON THE PROFILE.
 - 6) ALL SLOPE STAKE LINES, CUT & FILL BENCHES LINES ARE APPROXIMATE. EXACT LINES ARE TO BE DETERMINED ON SITE BY THE CONTRACTOR TO THE APPROVAL OF THE ENGINEER.
 - 7) DO NOT SCALE FROM THESE DRAWINGS.
 - 8) THE CONTRACTOR OF THIS PROJECT SHALL EXECUTE THE INTERSECTION WITH THE PROPOSED ACCESS ROAD TO THE DEAD SEA PANORAMIC COMPLEX PROJECT INCLUDING SIGNING, MARKING, PAVING, EARTHWORKS, SIDE DITCHES, ... etc. FOR A DISTANCE OF 20m. FROM THE C. OF THE DSPW. THE CONTRACTOR SHALL ALSO TAKE INTO CONSIDERATION THE PROPOSED VERTICAL SLOPE OF THE ACCESS ROAD.



Project: Tourism Sector Development Project in the Hashemite Kingdom of Jordan

Executing Agency: The Ministry of Tourism and Antiquities, The Ministry of Planning

SUB-PROJECT: Dead Sea Parkway

No's: This detailed design has been executed by a team of consultants as shown below in accordance with the agreement between Japan International Cooperation Agency (JICA) and JICA Study Team. The copyright of this drawing rests with JICA.

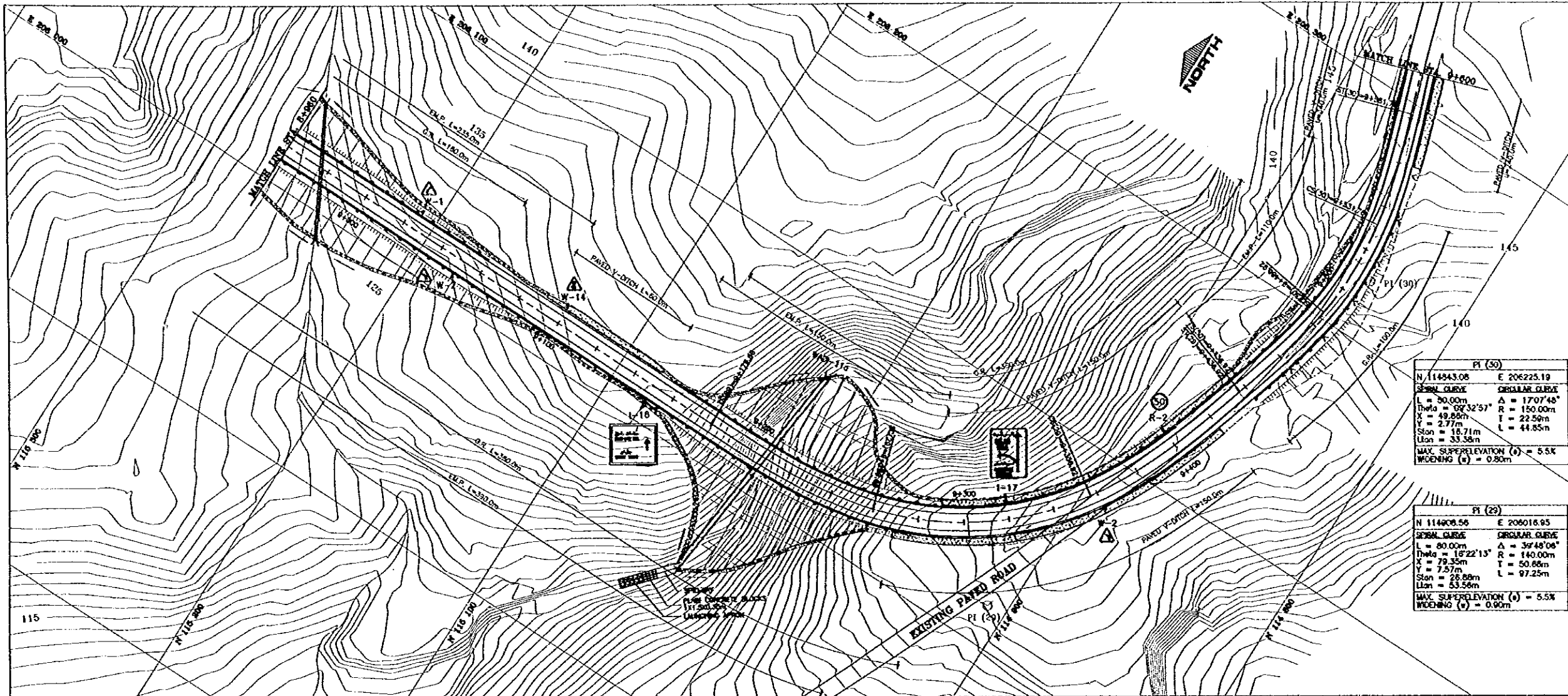
Designed by: Japan International Cooperation Agency (JICA)

JICA Study Team: Joint Venture of Pacific Consultants International and Yamasita Sekkel Inc.

Subcontracted Local Consultant: consolidated consultants engineering & environment Tel: 0112377 - Fax: 0112300 - AMMAN - JORDAN

Drawing Title: PLAN - PROFILE STA.8+320 - STA.8+960

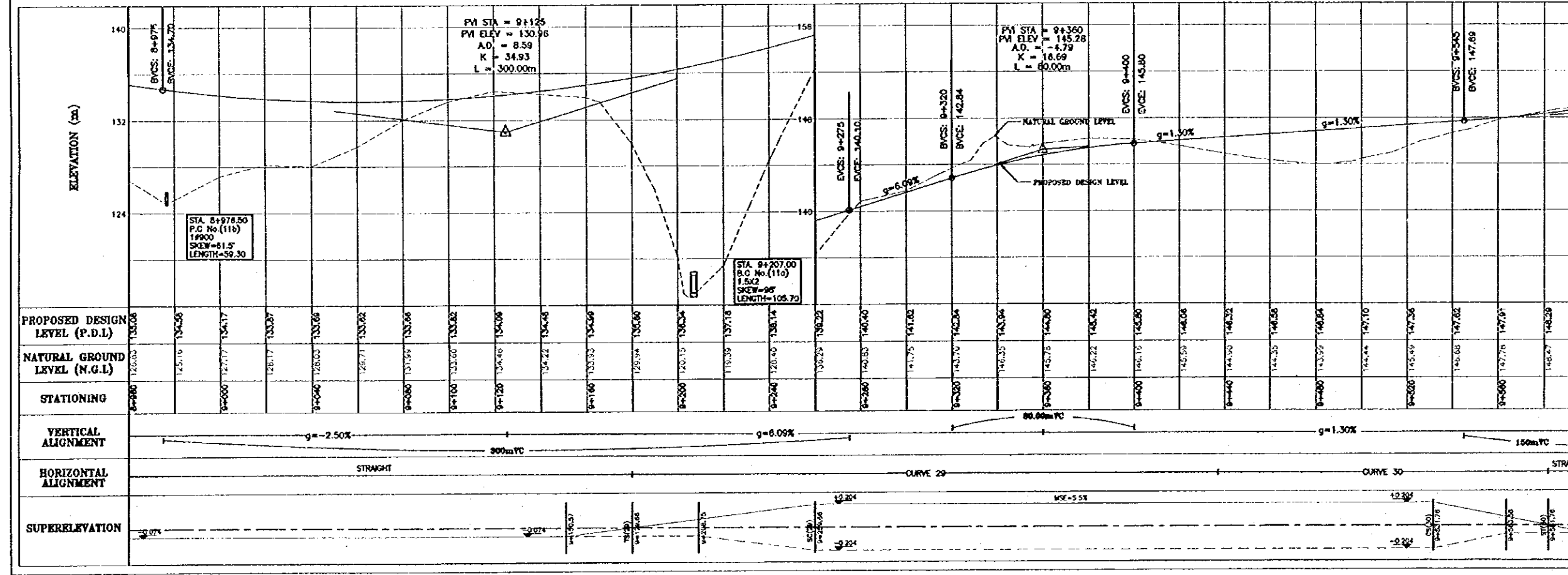
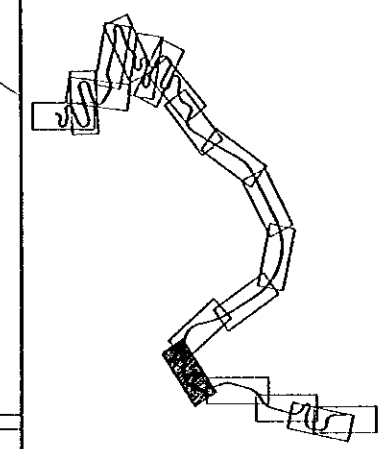
Scale: H 1:1000 V 1:200 **Drawing No.:** DSPW-24



- NOTES :-**
- 1) ALL DIMENSIONS ARE IN METERS UNLESS OTHERWISE INDICATED.
 - 2) FOR GUARDRAIL, RETAINING WALLS AND BENCHMARKS INFORMATION SEE DRAWING No. DSPW - 08
 - 3) FOR CUT AND FILL SLOPES SEE RELEVANT CROSS SECTIONS.
 - 4) GUARDRAIL SHOULD ALWAYS BE ACCOMPANIED BY THE USE OF W-56 CHEVRON UNLESS OTHERWISE INSTRUCTED BY THE ENGINEER.
 - 5) 750mm DIA. PIPE CULVERTS DRAINING THE PAVED DITCHES ARE NOT SHOWN ON THE PROFILE.
 - 6) ALL SLOPE STAKE LINES, CUT & FILL BENCHES LINES ARE APPROXIMATE. EXACT LINES ARE TO BE DETERMINED ON SITE BY THE CONTRACTOR TO THE APPROVAL OF THE ENGINEER.
 - 7) DO NOT SCALE FROM THESE DRAWINGS.

PI (30)	
N 114943.08	E 206225.19
SPHERICAL CURVE	CIRCULAR CURVE
L = 50.00m	$\Delta = 17'07'48''$
Theta = $02^{\circ}32'57''$	R = 150.00m
X = 49.89m	T = 22.50m
Y = 2.77m	L = 44.85m
Sta = 16.71m	
Ltan = 33.38m	
MAX. SUPERELEVATION (e) = 5.5%	
WIDENING (w) = 0.80m	

PI (29)	
N 114908.56	E 206016.95
SPHERICAL CURVE	CIRCULAR CURVE
L = 80.00m	$\Delta = 39^{\circ}48'08''$
Theta = $18^{\circ}22'13''$	R = 140.00m
X = 79.35m	T = 50.86m
Y = 7.57m	L = 97.25m
Sta = 25.88m	
Ltan = 53.56m	
MAX. SUPERELEVATION (e) = 5.5%	
WIDENING (w) = 0.90m	



Project:
Tourism Sector Development Project in the Hashemite Kingdom of Jordan

Executing Agency:
The Ministry of Tourism and Antiquities
The Ministry of Planning

SUB-PROJECT:
Dead Sea Parkway

Note:
This detailed design has been executed by a team of consultants as shown below in accordance with the agreement between Japan International Cooperation Agency (JICA) and JICA Study Team. The copyright of this drawing rests with JICA.

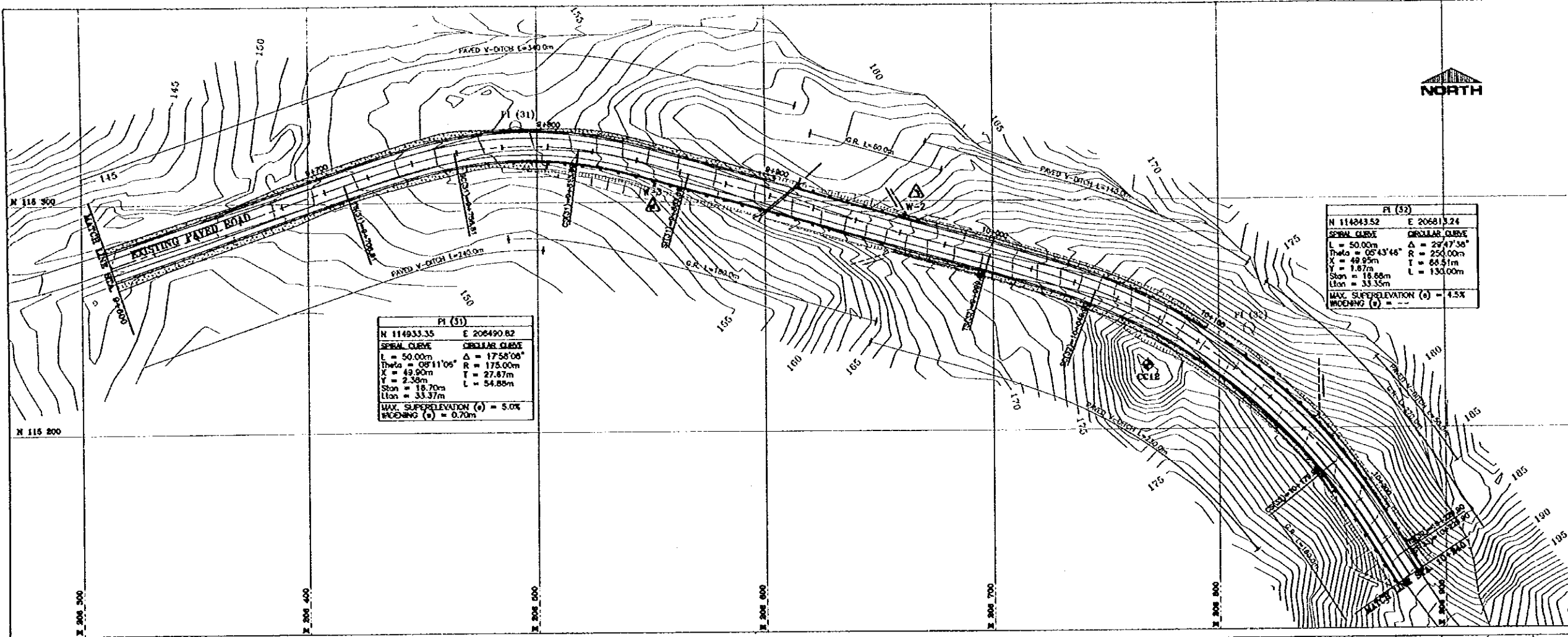
Designed by:
Japan International Cooperation Agency (JICA)

JICA Study Team:
Joint Venture of Pacific Consultants International and Yomiso Sekkel Inc.

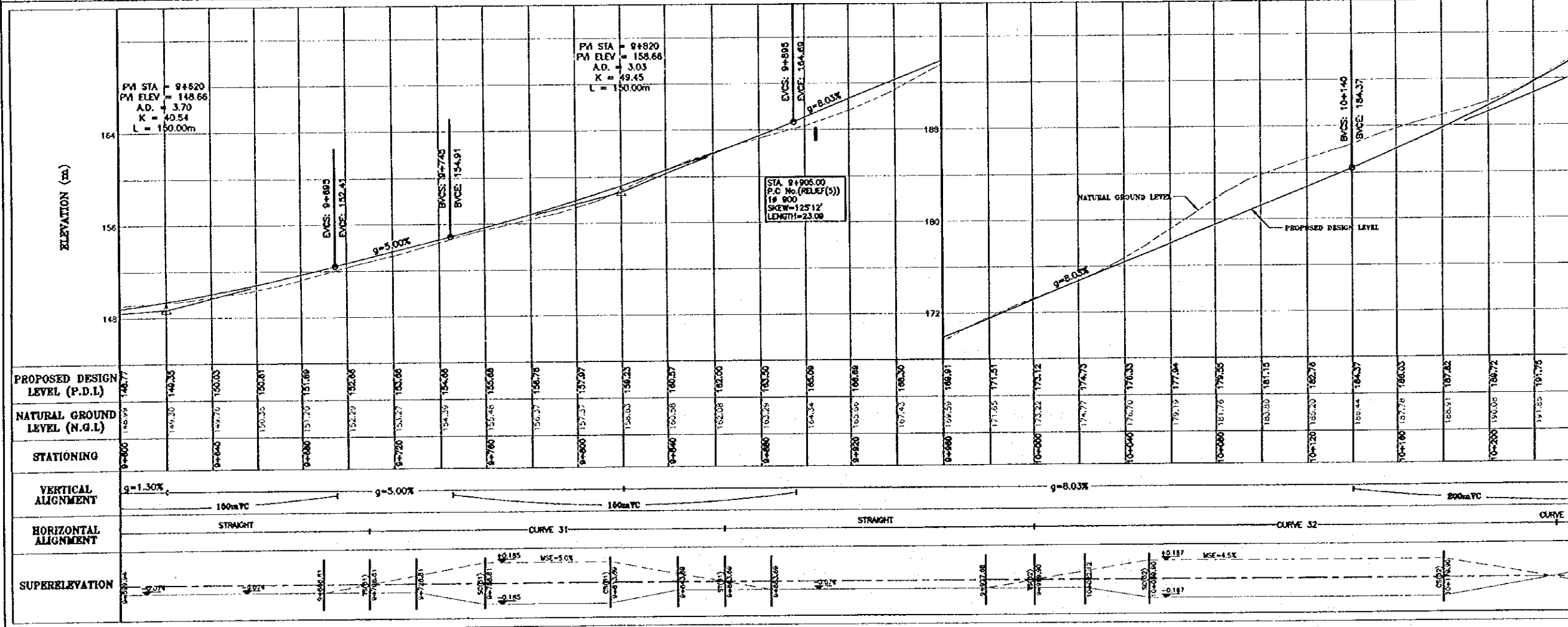
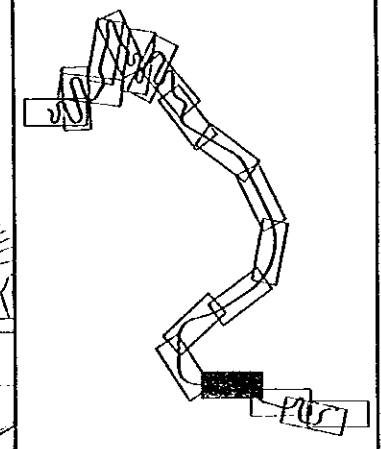
Subcontracted Local Consultant:
consolidated consultants
engineering & environment
Tel. 461237 - Fax 461230 - AMM - JORDAN

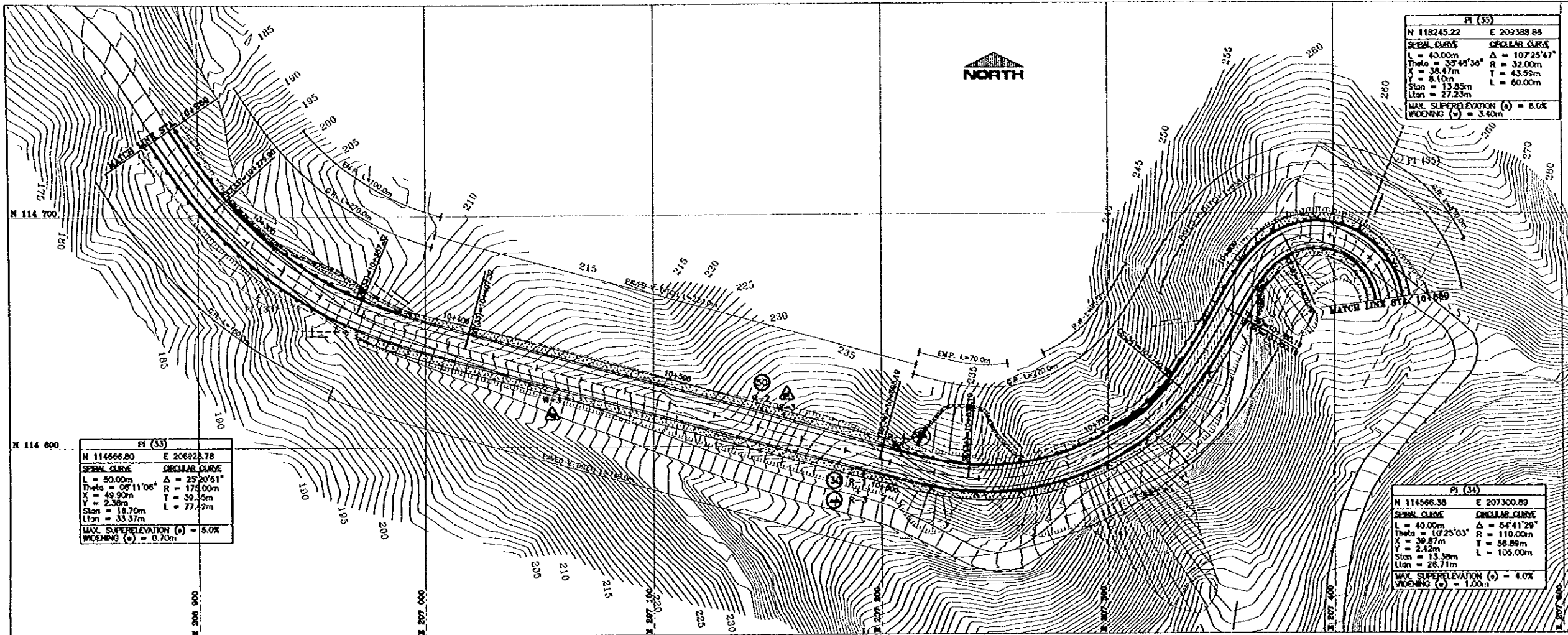
Drawing Title:
PLAN - PROFILE
STA.8+960 - STA.9+600

Scale: H 1:1000 V 1:200 **Drawing No.:** DSPW-26

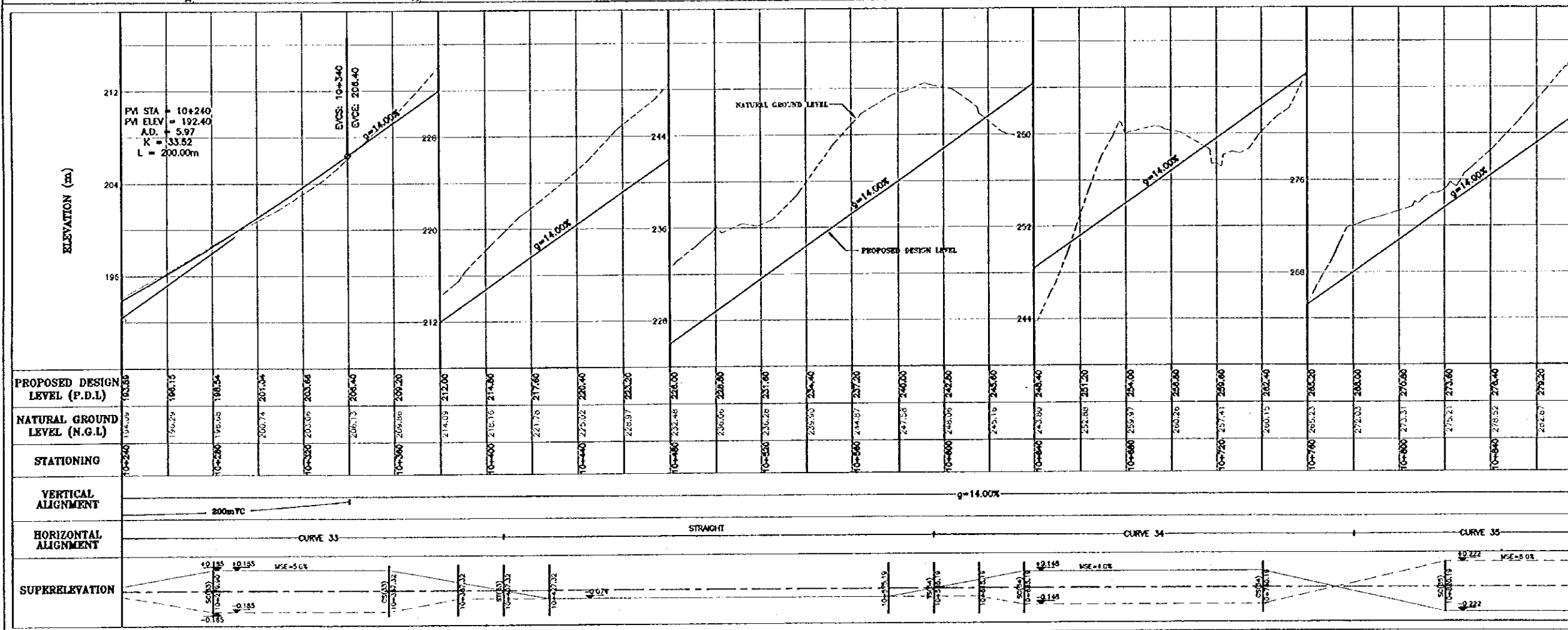
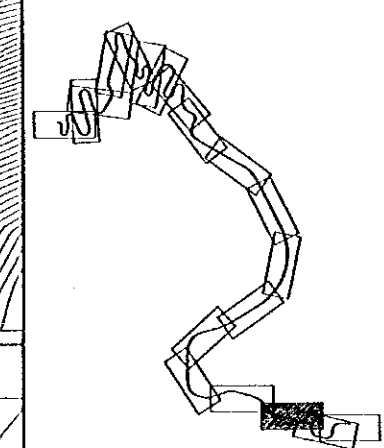


- NOTES :-**
- 1) ALL DIMENSIONS ARE IN METERS UNLESS OTHERWISE INDICATED.
 - 2) FOR GUARDRAIL, RETAINING WALLS AND BENCHMARKS INFORMATION SEE DRAWING No. DSPW - 08
 - 3) FOR CUT AND FILL SLOPES SEE RELEVANT CROSS SECTIONS.
 - 4) GUARDRAIL SHOULD ALWAYS BE ACCOMPANIED BY THE USE OF W-56 CHEVRON UNLESS OTHERWISE INSTRUCTED BY THE ENGINEER.
 - 5) 750mm DIA. PIPE CULVERTS DRAINING THE PAVED DITCHES ARE NOT SHOWN ON THE PROFILE.
 - 6) ALL SLOPE STAKE LINES, CUT & FILL BENCHES LINES ARE APPROXIMATE. EXACT LINES ARE TO BE DETERMINED ON SITE BY THE CONTRACTOR TO THE APPROVAL OF THE ENGINEER.
 - 7) DO NOT SCALE FROM THESE DRAWINGS.





- NOTES :-**
- 1) ALL DIMENSIONS ARE IN METERS UNLESS OTHERWISE INDICATED.
 - 2) FOR GUARDRAIL, RETAINING WALLS AND BENCHMARKS INFORMATION SEE DRAWING No. DSPW - 06
 - 3) FOR CUT AND FILL SLOPES SEE RELEVANT CROSS SECTIONS.
 - 4) GUARDRAIL SHOULD ALWAYS BE ACCOMPANIED BY THE USE OF W-56 CHEVRON UNLESS OTHERWISE INSTRUCTED BY THE ENGINEER.
 - 5) 750mm DIA. PIPE CULVERTS DRAINING THE PAVED DITCHES ARE NOT SHOWN ON THE PROFILE.
 - 6) ALL SLOPE STAKE LINES, CUT & FILL BENCHES LINES ARE APPROXIMATE. EXACT LINES ARE TO BE DETERMINED ON SITE BY THE CONTRACTOR TO THE APPROVAL OF THE ENGINEER.
 - 7) DO NOT SCALE FROM THESE DRAWINGS.



Project:
Tourism Sector Development Project in the Hashemite Kingdom of Jordan

Executing Agency:
The Ministry of Tourism and Antiquities
The Ministry of Planning

SUB-PROJECT:
Dead Sea Parkway

Note:
This detailed design has been executed by a team of consultants as shown below in accordance with the agreement between Japan International Cooperation Agency (JICA) and JICA Study Team. The copyright of this drawing rests with JICA.

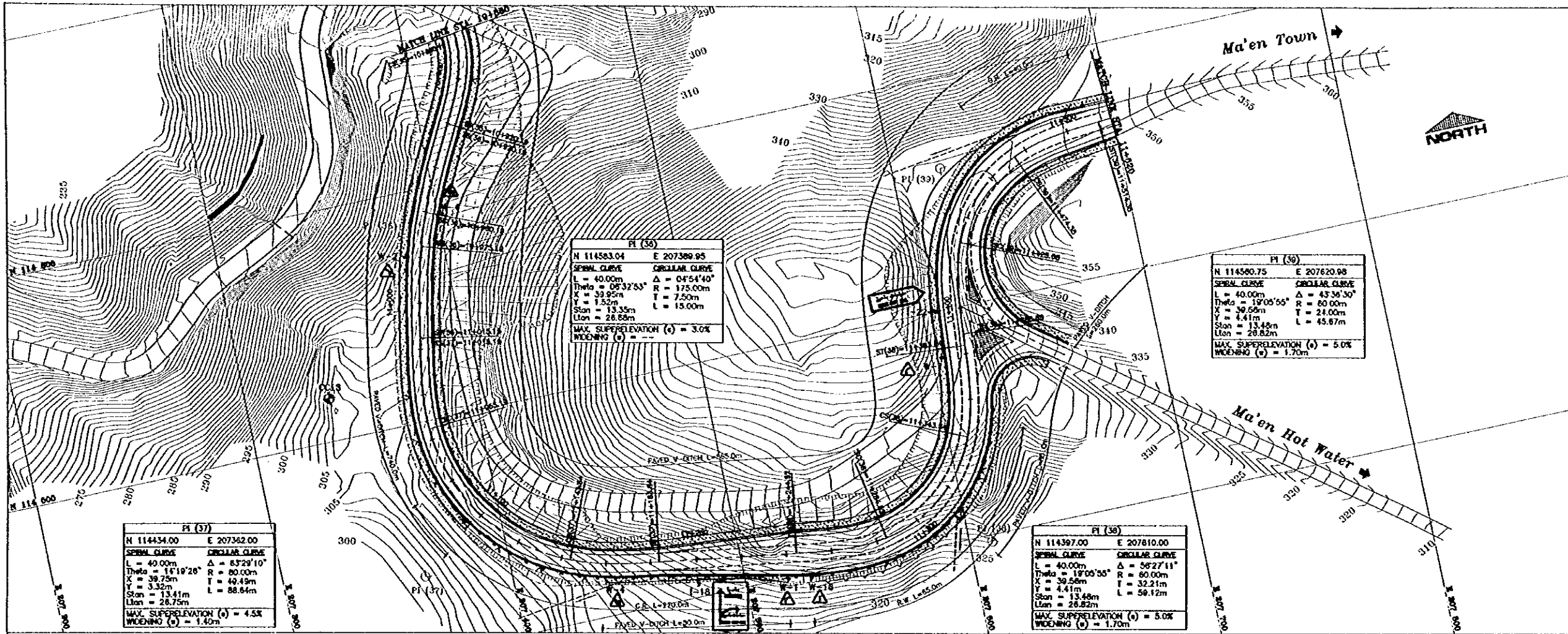
Designed by:
Japan International Cooperation Agency (JICA)

JICA Study Team:
Joint Venture of Pacific Consultants International and Yamasa Sekkel Inc.

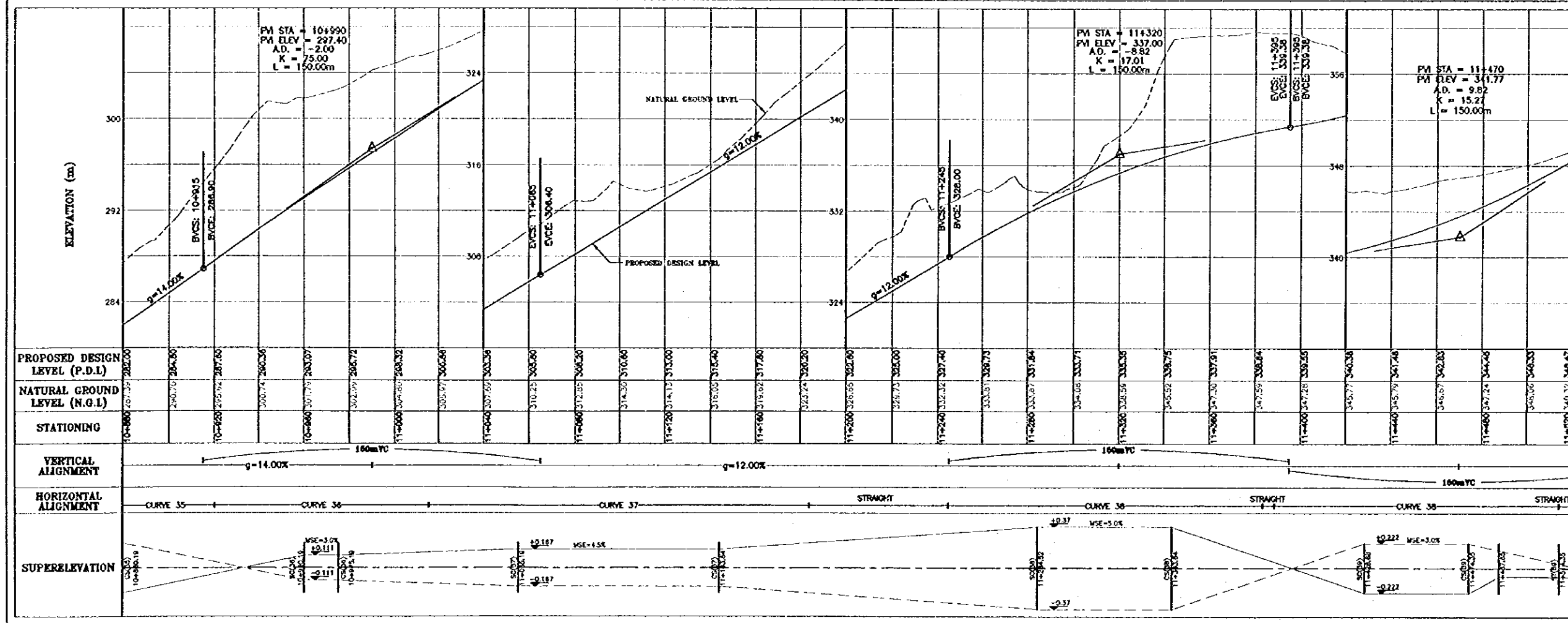
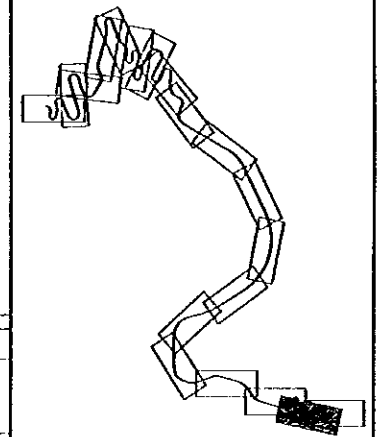
Subcontracted Local Consultant:
consolidated consultants
engineering & environment
Tel: 0112377 - Fax: 0112380 - AMM - JORDAN

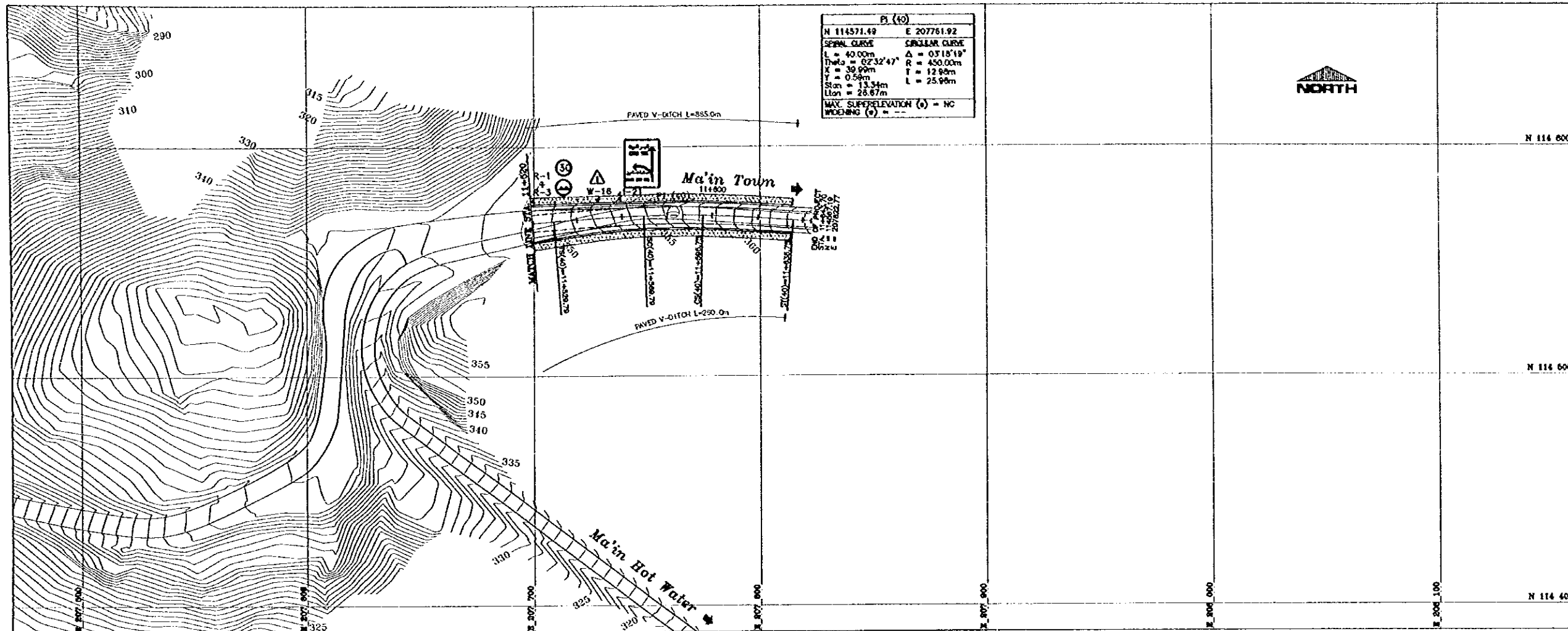
Drawing Title:
PLAN - PROFILE
STA.8+960 - STA.10+880

Scale: H 1:1000 V 1:200 **Drawing No.:** DSPW-27

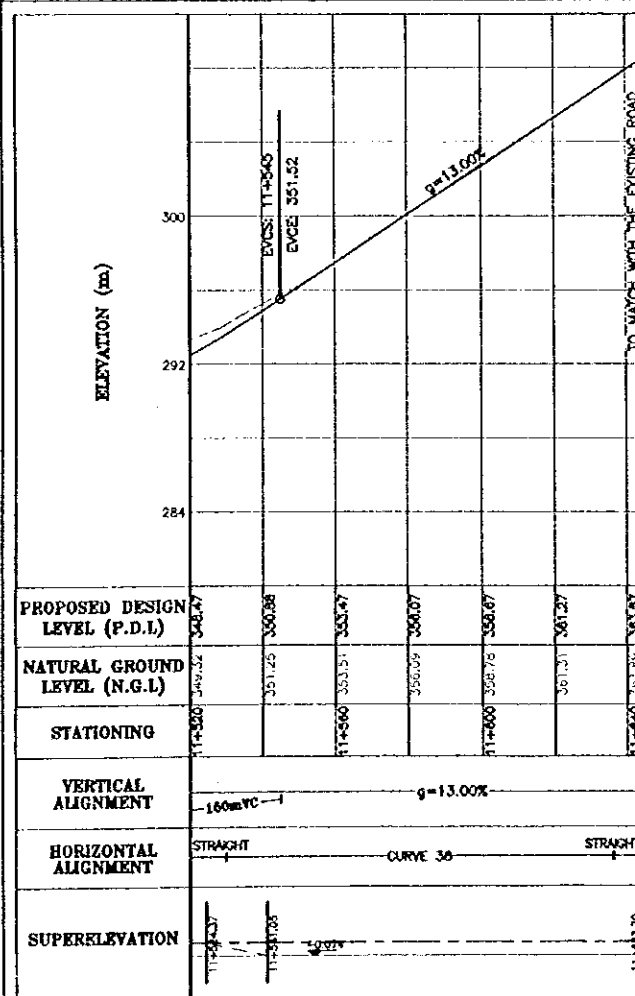
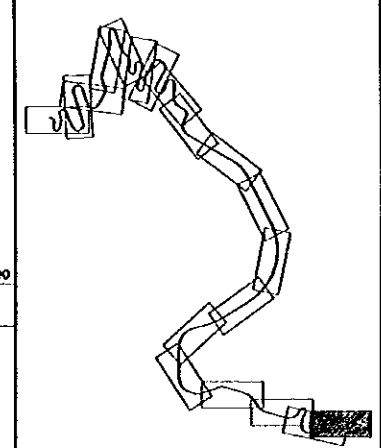


- NOTES :-**
- 1) ALL DIMENSIONS ARE IN METERS UNLESS OTHERWISE INDICATED .
 - 2) FOR GUARDRAIL , RETAINING WALLS AND BENCHMARK'S INFORMATION SEE DRAWING No. DSPW - 06
 - 3) FOR CUT AND FILL SLOPES SEE RELEVANT CROSS SECTIONS .
 - 4) GUARDRAIL SHOULD ALWAYS BE ACCOMPANIED BY THE USE OF W-56 CHEVRON UNLESS OTHERWISE INSTRUCTED BY THE ENGINEER .
 - 5) FOR INTERSECTION GEOMETRIC DESIGN , MARKING AND SIGNING SEE DRAWINGS No. DSPW - 40 TO DSPW - 43
 - 6) 750mm DIA. PIPE CULVERTS DRAINING THE PAVED DITCHES ARE NOT SHOWN ON THE PROFILE.
 - 7) ALL SLOPE STAKE LINES, CUT & FILL BENCHES LINES ARE APPROXIMATE. EXACT LINES ARE TO BE DETERMINED ON SITE BY THE CONTRACTOR TO THE APPROVAL OF THE ENGINEER.
 - 8) DO NOT SCALE FROM THESE DRAWINGS.





- NOTES :-**
- 1) ALL DIMENSIONS ARE IN METERS UNLESS OTHERWISE INDICATED .
 - 2) FOR GUARDRAIL , RETAINING WALLS AND BENCHMARKS INFORMATION SEE DRAWING No. DSPW - 06
 - 3) FOR CUT AND FILL SLOPES SEE RELEVANT CROSS SECTIONS .
 - 4) GUARDRAIL SHOULD ALWAYS BE ACCOMPANIED BY THE USE OF W-56 CHEVRON UNLESS OTHERWISE INSTRUCTED BY THE ENGINEER .
 - 5) 750mm DIA. PIPE CULVERTS DRAINING THE PAVED DITCHES ARE NOT SHOWN ON THE PROFILE.
 - 6) ALL SLOPE STAKE LINES, CUT & FILL BENCHES LINES ARE APPROXIMATE. EXACT LINES ARE TO BE DETERMINED ON SITE BY THE CONTRACTOR TO THE APPROVAL OF THE ENGINEER.
 - 7) DO NOT SCALE FROM THESE DRAWINGS.



Project:
Tourism Sector Development Project
in the Hashemite Kingdom of Jordan

Executing Agency:
The Ministry of Tourism and Antiquities
The Ministry of Planning

SUB-PROJECT:
Dead Sea Parkway

Note:
This detailed design has been executed by a team of consultants as shown below in accordance with the agreement between Japan International Cooperation Agency (JICA) and JICA Study Team.
The copyright of this drawing rests with JICA.

Designed by:
Japan International Cooperation Agency (JICA)
JICA Study Team:
Joint Venture of
Pacific Consultants International and
Yamasita Sekkel Inc.

Subcontracted Local Consultant:
consolidated consultants
engineering & environment
Tel: 0012777 - Fax: 0012300 - AMMAN - JORDAN

Drawing Title:
PLAN - PROFILE
STA.8+960 -- STA.11+643.70

Scale: H 1:1000 V 1:200 Drawing No.: DSPW-29