

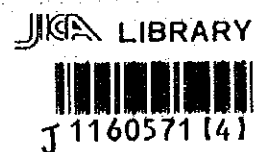
JAPAN INTERNATIONAL COOPERATION AGENCY

THE GOVERNMENT OF THE HASHEMITE KINGDOM OF JORDAN
THE MINISTRY OF TOURISM AND ANTIQUITIES, THE MINISTRY OF PLANNING

DRAFT
TENDER DOCUMENTS FOR CONSTRUCTION
OF
RAGHADAN BUS TERMINAL SUB-PROJECT
THE TOURISM SECTOR DEVELOPMENT PROJECT

**VOLUME IV
DRAWINGS**

(1) ARCHITECTURAL AND STRUCTURAL WORKS



Pacific Consultants International
Yamashita Sekkei Inc.

August 2000

SSF
JR
00-153

JAPAN INTERNATIONAL COOPERATION AGENCY

THE GOVERNMENT OF THE HASHEMITE KINGDOM OF JORDAN
THE MINISTRY OF TOURISM AND ANTIQUITIES, THE MINISTRY OF PLANNING

DRAFT
TENDER DOCUMENTS FOR CONSTRUCTION
OF
RAGHADAN BUS TERMINAL SUB-PROJECT
THE TOURISM SECTOR DEVELOPMENT PROJECT

VOLUME IV
DRAWINGS
(1) ARCHITECTURAL AND STRUCTURAL WORKS

Pacific Consultants International
Yamashita Sekkei Inc.

August 2000



1160571 (4)

ARCHITECTURAL DRAWINGS

DRAWING NO.	DRAWING TITLE	SCALE
A-001	LIST OF DRAWINGS & LEGEND	-
A-002	LOCATION MAP	1:2400
A-003	SITE TOPOGRAPHY & EXISTING LAYOUT	1:750
A-004	AREA - Zone 1 & Management Tower	1:250
A-005	AREA - Zone 2 & Zone 3	1:250
A-006	AREA - Zone 4	1:250
A-007	AREA - Zone 5 & GAR Tower	1:250
A-008	AREA - Police & Civil Defense Tower	1:250
A-009	AREA - Zone 9A10 & Others	1:250
A-101	PROJECT SITE & ZONING PLAN	1:750
A-102	GROUND FLOOR PLAN (ALL ZONES)	1:500
A-103	FIRST FLOOR PLAN (ALL ZONES)	1:500
A-104	SECOND FLOOR PLAN (ALL ZONES)	1:500
A-105	THIRD FLOOR PLAN (ALL ZONES)	1:500
A-106	FOURTH FLOOR PLAN (ALL ZONES)	1:500
A-107	FIFTH FLOOR PLAN (ALL ZONES)	1:500
A-108	ELEVATION & SECTIONS (ZONES 1-2-3-4-5-6)	1:500
A-201	SITE PLAN (ZONE 1-2-3)	1:250
A-202	SITE PLAN (ZONE 3+4+5+6+7)	1:250
A-203	SITE PLAN (ZONE 5+7+9+10)	1:250
A-204	SITE LEGEND PLAN (1)	1:500
A-205	SITE LEGEND PLAN (2)	1:500
A-301	MAIN Bldg FIRST FLOOR PLAN (ZONE1)	1:300
A-302	MAIN Bldg SECOND FLOOR PLAN (ZONE1)	1:300
A-303	MAIN Bldg THIRD FLOOR PLAN (ZONE1)	1:300
A-304	MAIN Bldg FOURTH FLOOR PLAN (ZONE1)	1:300
A-305	MAIN Bldg FIFTH FLOOR PLAN (ZONE1)	1:300
A-306	MAIN Bldg ROOF PLAN (ZONE1)	1:300
A-307	MAIN Bldg FIRST FLOOR PLAN (ZONE2)	1:300
A-308	MAIN Bldg SECOND FLOOR PLAN (ZONE2)	1:300
A-309	MAIN Bldg ROOF PLAN (ZONE2)	1:300
A-310	MAIN Bldg GROUND FLOOR PLAN (ZONE3)	1:300
A-311	MAIN Bldg FIRST FLOOR PLAN (ZONE3)	1:300
A-312	MAIN Bldg SECOND FLOOR PLAN (ZONE3)	1:300
A-313	MAIN Bldg ROOF PLAN (ZONE3)	1:300
A-314	MAIN Bldg GROUND FLOOR PLAN (ZONE4)	1:300
A-315	MAIN Bldg FIRST FLOOR PLAN (ZONE4)	1:300
A-316	MAIN Bldg SECOND FLOOR PLAN (ZONE4)	1:300
A-317	MAIN Bldg ROOF PLAN (ZONE4)	1:300
A-318	MAIN Bldg GROUND FLOOR PLAN (ZONE5)	1:300
A-319	MAIN Bldg FIRST FLOOR PLAN (ZONE5)	1:300
A-320	MAIN Bldg SECOND FLOOR PLAN (ZONE5)	1:300
A-321	MAIN Bldg THIRD FLOOR PLAN (ZONE5)	1:300
A-322	MAIN Bldg FOURTH FLOOR PLAN (ZONE5)	1:300
A-323	MAIN Bldg FIFTH FLOOR PLAN (ZONE5)	1:300
A-324	MAIN Bldg ROOF PLAN (ZONE5)	1:300
A-325	MAIN Bldg GROUND FLOOR PLAN (ZONE6)	1:300
A-326	MAIN Bldg ROOF PLAN (ZONE6)	1:300
A-401	MAIN Bldg ELEVATIONS	1:300
A-402	MAIN Bldg ELEVATIONS	1:300
A-403	MAIN Bldg ELEVATIONS	1:300
A-404	MAIN Bldg ELEVATIONS	1:300
A-405	MAIN Bldg ELEVATIONS	1:300
A-406	MAIN Bldg ELEVATIONS	1:300
A-407	MAIN Bldg ELEVATIONS	1:300
A-408	MAIN Bldg ELEVATIONS	1:300
A-501	MAIN Bldg SECTIONS	1:300
A-502	MAIN Bldg SECTIONS	1:300
A-503	MAIN Bldg SECTIONS	1:300
A-504	MAIN Bldg SECTIONS	1:300
A-505	MAIN Bldg SECTIONS	1:300
A-506	MAIN Bldg SECTIONS	1:300
A-601	WALL SECTIONS	1:20
A-602	WALL SECTIONS	1:20
A-603	WALL SECTIONS	1:20
A-604	WALL SECTIONS	1:20
A-605	WALL SECTIONS	1:20
A-606	WALL SECTIONS	1:20
A-607	WALL SECTIONS	1:20
A-608	WALL SECTIONS	1:20
A-609	WALL SECTIONS	1:20
A-701	TABLETS	1:50
A-702	TABLETS	1:50

ARCHITECTURAL DRAWINGS

DRAWING NO.	DRAWING TITLE	SCALE
A-601	STAIRCASES	1:50/1:25
A-602	STAIRCASES	1:50/1:25
A-603	STAIRCASES	1:50/1:25
A-604	STAIRCASES	1:50/1:25
A-605	STAIRCASES	1:50/1:25
A-606	STAIRCASES	1:50/1:25
A-607	STAIRCASES	1:50/1:25
A-608	STAIRCASES	1:50/1:25
A-609	STAIRCASES	1:50/1:25
A-610	STAIRCASES	1:50/1:25
A-611	STAIRCASES	1:50/1:25
A-612	STAIRCASES	1:50/1:25
A-613	STAIRCASES	1:50/1:25
A-901	DOORS ELEVATIONS	1:20
A-902	DOORS ELEVATIONS	1:20
A-903	DOORS ELEVATIONS	1:20
A-904	DOORS DETAILS	1:30
A-905	DOORS DETAILS	1:30
A-906	DOORS DETAILS	1:30
A-907	DOORS DETAILS	1:30
A-908	DOORS DETAILS	1:30
A-909	DOORS DETAILS	1:30
A-910	DOORS DETAILS	1:30
A-911	DOORS DETAILS	1:30
A-912	DOORS DETAILS	1:30
A-913	DOORS DETAILS	1:30
A-914	DOORS DETAILS	1:30
A-915	DOORS DETAILS	1:30
A-916	DOORS DETAILS	1:30
A-917	DOORS DETAILS	1:30
A-918	DOORS DETAILS	1:30
A-919	VINDOVS ELEVATIONS	NTS
A-920	VINDOVS ELEVATIONS	NTS
A-921	VINDOVS DETAILS	1:30
A-922	VINDOVS DETAILS	1:30
A-923	VINDOVS DETAILS	1:30
A-924	VINDOVS DETAILS	1:30
A-925	VINDOVS DETAILS	1:30
A-926	VINDOVS DETAILS	1:30
A-927	VINDOVS DETAILS	1:30
A-928	VINDOVS DETAILS	1:30
A-929	VINDOVS DETAILS	1:30
A-930	MISCELLANEOUS DETAILS	1:30
A-931	MISCELLANEOUS DETAILS	VAR
A-932	MISCELLANEOUS DETAILS	VAR
A-933	MISCELLANEOUS DETAILS	VAR
A-934	MISCELLANEOUS DETAILS	VAR
A-935	MISCELLANEOUS DETAILS	VAR
A-936	MISCELLANEOUS DETAILS	VAR
A-937	MISCELLANEOUS DETAILS	VAR
A-938	MISCELLANEOUS DETAILS	VAR
A-939	MISCELLANEOUS DETAILS	VAR
A-940	MISCELLANEOUS DETAILS	VAR
A-941	MISCELLANEOUS DETAILS	VAR
A-942	MISCELLANEOUS DETAILS	VAR
A-943	MISCELLANEOUS DETAILS	VAR
A-944	MISCELLANEOUS DETAILS	VAR
A-945	MISCELLANEOUS DETAILS	VAR
A-946	MISCELLANEOUS DETAILS	VAR
A-947	MISCELLANEOUS DETAILS	VAR
A-948	MISCELLANEOUS DETAILS	VAR
A-949	MISCELLANEOUS DETAILS	VAR
A-950	MISCELLANEOUS DETAILS	VAR
A-1001	SITE PLANTING SCHEDULE	NTS
A-1002	SITE PLANTING LAYOUT ZONE 1-2-3	1:250
A-1003	SITE PLANTING LAYOUT ZONE 3+4+5+6+7	1:250
A-1004	SITE PLANTING LAYOUT ZONE 9-10	1:250

STRUCTURAL DRAWINGS

DRAWING NO.	DRAWING TITLE	SCALE
S-100-1	General Notes	
S-100-2	General Notes	
S-101-1	Foundation Plan and RC Details, Zone 1	1:100
S-101-2	Foundation RC Details, Zone 1	1:25
S-102	Columns RC details, Zone 1	1:20
S-103	Second Floor Slab Framing Plan and RC Details, Zone 1	1:100
S-103-1	Third Floor Slab Framing Plan and RC Details, Zone 1	1:100
S-102-1	Second Floor Beams RC Details, Zone 1	1:50 / 1:20
S-102-2	Second Floor Beams RC Details, Zone 1	1:50 / 1:20
S-102-3	Second Floor Beams RC Details, Zone 1	1:50 / 1:20
S-102-4	Second Floor Beams RC Details, Zone 1	1:50 / 1:20
S-102-5	Second Floor Beams RC Details, Zone 1	1:50 / 1:20
S-201-1	Foundation Plan and RC Details, Zone 2	1:100
S-201-2	Foundation RC Details, Zone 2	1:25
S-201-3	Foundation RC Details, Zone 2	1:25
S-201-4	Columns RC details, Zone 2	1:20
S-201-5	Columns RC details, Zone 2	1:20
S-202	Second Floor Slab Framing Plan and RC Details, Zone 2	1:100
S-202-1	Second Floor Beams RC Details, Zone 2	1:50 / 1:20
S-202-2	Second Floor Beams RC Details, Zone 2	1:50 / 1:20
S-202-3	Second Floor Beams RC Details, Zone 2	1:50 / 1:20
S-202-4	Second Floor Beams RC Details, Zone 2	1:50 / 1:20
S-202-5	Second Floor Beams RC Details, Zone 2	1:50 / 1:20
S-203-1	Roof Floor Beams RC Details, Zone 2	1:50 / 1:20
S-203-2	Roof Floor Beams RC Details, Zone 2	1:50 / 1:20
S-301-1	Foundation Plan and RC Details, Zone 3	1:100
S-301-2	Foundation RC Details, Zone 3	1:25
S-301-3	Foundation RC Details, Zone 3	1:25
S-301-4	Columns RC details, Zone 3	1:20
S-301-5	Columns RC details, Zone 3	1:20
S-302	First Floor Slab Framing Plan and RC Details, Zone 3	1:100
S-302-1	Second Floor Slab Framing Plan and RC Details, Zone 3	1:100
S-302-2	Third Floor Slab Framing Plan and RC Details, Zone 3	1:100
S-302-3	Fourth Floor Slab Framing Plan and RC Details, Zone 3	1:100
S-302-4	Fifth Floor Slab Framing Plan and RC Details, Zone 3	1:100
S-302-5	Roof Floor Slab Framing Plan and RC Details, Zone 3	1:100
S-303-1	First Floor Beams RC Details, Zone 3	1:50 / 1:20
S-303-2	Second Floor Beams RC Details, Zone 3	1:50 / 1:20
S-303-3	Third Floor Beams RC Details, Zone 3	1:50 / 1:20
S-303-4	High Level Beams RC Details, Zone 3	1:50 / 1:20
S-401-1	Foundation Plan and RC Details, Zone 4	1:100
S-401-2	Foundation RC Details, Zone 4	1:25
S-401-3	Foundation RC Details, Zone 4	1:25
S-401-4	Columns RC details, Zone 4	1:20
S-401-5	Columns RC details, Zone 4	1:20
S-402	First Floor Slab Framing Plan and RC Details, Zone 4	1:100
S-402-1	Second Floor Slab Framing Plan and RC Details, Zone 4	1:100
S-402-2	Third Floor Slab Framing Plan and RC Details, Zone 4	1:100
S-402-3	Fourth Floor Slab Framing Plan and RC Details, Zone 4	1:100
S-402-4	Fifth Floor Slab Framing Plan and RC Details, Zone 4	1:100
S-402-5	Roof Floor Slab Framing Plan and RC Details, Zone 4	1:100
S-403-1	First Floor Beams RC Details, Zone 4	1:50 / 1:20
S-403-2	First Floor Beams RC Details, Zone 4	1:50 / 1:20
S-403-3	First Floor Beams RC Details, Zone 4	1:50 / 1:20
S-403-4	Second Floor Beams RC Details, Zone 4	1:50 / 1:20
S-403-5	Second Floor Beams RC Details, Zone 4	1:50 / 1:20
S-403-6	Roof Floor Beams RC Details, Zone 4	1:50 / 1:20
S-403-7	Roof Floor Beams RC Details, Zone 4	1:50 / 1:20
S-501-1	Foundation Plan and RC Details, Zone 5	1:100
S-501-2	Foundation RC Details, Zone 5	1:25
S-501-3	Foundation RC Details, Zone 5	1:25
S-501-4	Columns RC details, Zone 5	1:20
S-501-5	Columns RC details, Zone 5	1:20
S-502	First Floor Slab Framing Plan and RC Details, Zone 5	1:100
S-502-1	Second Floor Slab Framing Plan and RC Details, Zone 5	1:100
S-502-2	Third Floor Slab Framing Plan and RC Details, Zone 5	1:100
S-502-3	Fourth Floor Slab Framing Plan and RC Details, Zone 5	1:100
S-502-4	Fifth Floor Slab Framing Plan and RC Details, Zone 5	1:100
S-502-5	Roof Floor Slab Framing Plan and RC Details, Zone 5	1:100
S-503-1	First Floor Beams RC Details, Zone 5	1:50 / 1:20
S-503-2	First Floor Beams RC Details, Zone 5	1:50 / 1:20
S-503-3	Second Floor Beams RC Details, Zone 5	1:50 / 1:20
S-503-4	Second Floor Beams RC Details, Zone 5	1:50 / 1:20
S-503-5	Third Floor Beams RC Details, Zone 5	1:50 / 1:20
S-503-6	Third Floor Beams RC Details, Zone 5	1:50 / 1:20
S-503-7	Third Floor Beams RC Details, Zone 5	1:50 / 1:20
S-503-8	Foundation Plan and RC Details, Zone 6	1:100
S-503-9	Foundation RC Details, Zone 6	1:25
S-503-10	Foundation RC Details, Zone 6	1:25

STRUCTURAL DRAWINGS

DRAWING NO.	DRAWING TITLE	SCALE
S-610-1	Foundation RC Details, Zone 6	1:25
S-620	Columns RC details, Zone 6	1:20
S-630	First Floor Slab Framing Plan and RC Details, Zone 6	1:100
S-640	First Floor Beams RC Details, Zone 6	1:50 / 1:20
S-710-1	Foundation RC Details, Zone 7 & Zone 8	1:25
S-710-2	Foundation RC Details, Zone 7 & Zone 8	1:25
S-710-3	Foundation RC Details, Zone 7 & Zone 8	1:25
S-710-4	Tower Plan and RC Details, Zone 710	1:100
S-720	Foundation, Slab Plan and RC Det. Zone 710	1:25
S-801	Slab Case RC Details	1:50 / 1:20
S-802	Slab Case RC Details	1:50 / 1:20
S-803	Slab Case RC Details	1:50 / 1:20
S-804	Slab Case RC Details	1:50 / 1:20
S-805	Slab Case RC Details	1:50 / 1:20
S-806	Slab Case RC Details	1:50 / 1:20
S-807	Slab Case RC Details	1:50 / 1:20
S-808	Slab Case RC Details	1:50 / 1:20
S-809	Slab Case RC Details	1:50 / 1:20
S-810	Slab Case RC Details	1:50 / 1:20
S-820	Large Bus Toilets Building RC Details	Var.
S-830	Large Bus Shed Roof Plan	Var.
S-840	Large Bus Shed Sections & Details	Var.
S-850	Large Bus Shed Details	Var.
S-860	Large Bus Shed Foundation & RC Details	Var.
S-870	White Taxi and Mini Bus Shed Plan & Details	Var.
S-880	Bridge (1) Plan and Details	Var.
S-890	Bridge (1) Sections and Details	Var.
S-900	Bridge (1) Foundation Plan and RC	Var.
S-910	Bridge (2) Deck Plan and Section	Var.
S-920	Bridge (2) Sections and Details	Var.
S-930	Bridge (2) Foundation Plan and RC	Var.
S-940	Bridge (2) Details	Var.
S-950	Bridge (2) Sections and Details	Var.
S-960	Bridge (2) Foundation Plan and RC	Var.
S-970	Bridge (2) Details	Var.
S-980	Bridge (2) Sections and Details	Var.
S-990	Bridge (2) Foundation Plan and RC	Var.
S-992	Bridge (2) Details	Var.
S-993	Bridge (2) Details	Var.
S-994	Bridge (2) Details	Var.
S-995	Bridge (2) Details	Var.
S-996	Bridge (2) Details	Var.
S-997	Bridge (2) Details	Var.
S-998	Bridge (2) Details	Var.
S-999	Bridge (2) Details	Var.

ELECTRICAL DRAWINGS

DRAWING NO.	DRAWING TITLE	SCALE
E-00	LEGEND	AS SHOWN
E-01	GROUND FLOOR POWER CABLES ROUTING	1:250
E-02	GROUND FLOOR POWER CABLES ROUTING	1:250
E-03	FIRST FLOOR POWER CABLES ROUTING	1:250
E-04	FIRST FLOOR POWER CABLES ROUTING	1:250
E-05	SECOND FLOOR POWER CABLES ROUTING	1:250
E-06	SECOND FLOOR POWER CABLES ROUTING	1:250
E-07	GROUND FLOOR ELECTRICAL TYPICAL DETAILS	1:50
E-08	GROUND FLOOR ELECTRICAL TYPICAL DETAILS	1:50
E-09	GROUND FLOOR ELECTRICAL TYPICAL DETAILS	1:50
E-10	GROUND FLOOR ELECTRICAL TYPICAL DETAILS	1:50
E-11	ELECTRICAL LAYOUT FOR TABLETS	1:50
E-12	FIRST FLOOR ELECTRICAL TYPICAL DETAILS	1:50
E-13	FIRST FLOOR ELECTRICAL TYPICAL DETAILS	1:50
E-14	SECOND FLOOR ELECTRICAL TYPICAL DETAILS	AS SHOWN
E-15	SECOND FLOOR ELECTRICAL TYPICAL DETAILS	1:50
E-16	GROUND FLOOR AREA LIGHTING LAYOUT	1:250
E-17	GROUND FLOOR AREA LIGHTING LAYOUT	1:250
E-18	FIRST FLOOR AREA LIGHTING LAYOUT	1:250
E-19	FIRST FLOOR AREA LIGHTING LAYOUT	1:250
E-20	SECOND FLOOR AREA LIGHTING LAYOUT	1:250
E-21	SECOND FLOOR AREA LIGHTING LAYOUT	1:250
E-22	ELECTRICAL ROOM AND ROWS DETAILS	AS SHOWN
E-23	MAN BSS SCHEMATICS	NTS
E-24	MAN BSS SCHEMATICS	NTS
E-25	DB SCHEMATICS	NTS
E-26	MANAGEMENT TOWER EL.DETAILS	1:250
E-27	GAR TOWER EL.DETAILS	1:250
E-28	STEEL REFERENCE TOWER EL.DETAILS	1:250
E-29	POLICE TOWER EL.DETAILS	1:250
E-30	TELEPHONE RISER DIAGRAM	NTS
E-31	GROUND FLOOR TELLAYOUT	1:250
E-32	GROUND FLOOR TELLAYOUT	1:250
E-33	FIRST FLOOR TELLAYOUT	1:250
E-34	FIRST FLOOR TELLAYOUT	1:250
E-35	SECOND FLOOR TELLAYOUT	1:250
E-36	SECOND FLOOR TELLAYOUT	1:250
E-37	GENERAL DETAILS	1:250
E-38	TYPICAL SHEP DETAIL	1:50

LEGEND OF SYMBOLS

- REINFORCED CONCRETE
- STONE
- CONCRETE BLOCK
- PLAIN CONCRETE MORTAR
- PLASTER FINE AGGREGATE FILL
- COMPACTED SOIL
- WATERPROOFING MEMBRANE
- POLYETHYLENE SHEETS SEPARATION LAYER
- SOLID WOOD BATTEN
- HARD CORE
- SECTION LINE
- SECTION LINE
- CENTER LINE
- DETAIL REFERENCE
- DETAIL REFERENCE
- ROOM #
- FLOOR LEVEL ON PLAN
- FLOOR LEVEL ON ELEVATION
- FINISHES
- FINISHES
- DOOR/WINDOW OPENING
- DOOR/WINDOW TYPE
- DOOR/WINDOW REFERENCE

ALL DIMENSIONS ARE IN CENTIMETERS UNLESS OTHERWISE NOTED

ALL LEVELS ARE IN METERS.

Designed by:
Japan International Cooperation Agency (JICA)

JICA Study Team:
Joint Venture of Pacific Consultants International and Yamasei Sekkei Inc.

Subcontracted Local Consultant:
TIBM Consultants Architects Engineers

Raghadan Bus Terminal

LIST OF DRAWINGS & LEGEND

Sheet No. RBT . A001

MECHANICAL DRAWINGS

DRAWING No	DRAWING TITLE	SCALE
M-001	GENERAL NOTE & LEGEND	M75
M-101	MECHANICAL SERVICES FOR SITE-1	1-250
M-102	MECHANICAL SERVICES FOR SITE-2	1-250
M-103	MECHANICAL SERVICES FOR SITE-3	1-250
M-201	RAINAGE LAYOUT SYSTEM FOR FIRST FLOOR ZONE 1	1-100
M-202	RAINAGE LAYOUT SYSTEM FOR SECOND FLOOR ZONE 1	1-100
M-203	RAINAGE LAYOUT SYSTEM FOR THIRD FLOOR ZONE 1	1-100
M-204	RAINAGE LAYOUT SYSTEM FOR MANAGEMENT TOWER (ZONE 1)	1-100
M-205	RAINAGE LAYOUT SYSTEM FOR FIRST FLOOR ZONE 2	1-100
M-206	RAINAGE LAYOUT SYSTEM FOR SECOND FLOOR ZONE 2	1-100
M-207	RAINAGE LAYOUT SYSTEM FOR ROOF FLOOR ZONE 2	1-100
M-208	RAINAGE LAYOUT SYSTEM FOR GROUND FLOOR ZONE 3	1-100
M-209	RAINAGE LAYOUT SYSTEM FOR FIRST FLOOR ZONE 3	1-100
M-210	RAINAGE LAYOUT SYSTEM FOR SECOND FLOOR ZONE 3	1-100
M-211	RAINAGE LAYOUT SYSTEM FOR ROOF FLOOR ZONE 3	1-100
M-212	RAINAGE LAYOUT SYSTEM FOR GROUND FLOOR ZONE 4	1-100
M-213	RAINAGE LAYOUT SYSTEM FOR FIRST FLOOR ZONE 4	1-100
M-214	RAINAGE LAYOUT SYSTEM FOR SECOND FLOOR ZONE 4	1-100
M-215	RAINAGE LAYOUT SYSTEM FOR ROOF FLOOR ZONE 4	1-100
M-216	RAINAGE LAYOUT SYSTEM FOR GROUND FLOOR ZONE 5	1-100
M-217	RAINAGE LAYOUT SYSTEM FOR FIRST FLOOR ZONE 5	1-100
M-218	RAINAGE LAYOUT SYSTEM FOR SECOND FLOOR ZONE 5	1-100
M-219	RAINAGE LAYOUT SYSTEM FOR THIRD FLOOR ZONE 5	1-100
M-220	RAINAGE LAYOUT SYSTEM FOR FOURTH FLOOR ZONE 5	1-100
M-221	RAINAGE LAYOUT SYSTEM FOR FIFTH FLOOR ZONE 5	1-100
M-222	RAINAGE LAYOUT SYSTEM FOR GROUND FLOOR ZONE 6	1-100
M-223	RAINAGE LAYOUT SYSTEM FOR FIRST FLOOR ZONE 6	1-100
M-224	RAINAGE LAYOUT SYSTEM FOR ZONE 7	1-100
M-225	RAINAGE LAYOUT SYSTEM FOR ZONE 8	1-100
M-226	RAINAGE LAYOUT SYSTEM FOR ZONE 9	1-100
M-401	COLD WATER SYSTEM FOR FIRST FLOOR ZONE 1	1-100
M-402	COLD WATER SYSTEM FOR SECOND FLOOR ZONE 1	1-100
M-403	COLD WATER SYSTEM FOR THIRD FLOOR ZONE 1	1-100
M-404	COLD WATER SYSTEM FOR MANAGEMENT TOWER (ZONE 1)	1-100
M-405	COLD WATER SYSTEM FOR FIRST FLOOR ZONE 2	1-100
M-406	COLD WATER SYSTEM FOR SECOND FLOOR ZONE 2	1-100
M-407	COLD WATER SYSTEM FOR THIRD FLOOR ZONE 2	1-100
M-408	COLD WATER SYSTEM FOR GROUND FLOOR ZONE 3	1-100
M-409	COLD WATER SYSTEM FOR FIRST FLOOR ZONE 3	1-100
M-410	COLD WATER SYSTEM FOR SECOND FLOOR ZONE 3	1-100
M-411	COLD WATER SYSTEM FOR THIRD FLOOR ZONE 3	1-100
M-412	COLD WATER SYSTEM FOR GROUND FLOOR ZONE 4	1-100
M-413	COLD WATER SYSTEM FOR FIRST FLOOR ZONE 4	1-100
M-414	COLD WATER SYSTEM FOR SECOND FLOOR ZONE 4	1-100
M-415	COLD WATER SYSTEM FOR THIRD FLOOR ZONE 4	1-100
M-416	COLD WATER SYSTEM FOR GROUND FLOOR ZONE 5	1-100
M-417	COLD WATER SYSTEM FOR FIRST FLOOR ZONE 5	1-100
M-418	COLD WATER SYSTEM FOR SECOND FLOOR ZONE 5	1-100
M-419	COLD WATER SYSTEM FOR THIRD FLOOR ZONE 5	1-100
M-420	COLD WATER SYSTEM FOR FOURTH FLOOR ZONE 5	1-100
M-421	COLD WATER SYSTEM FOR FIFTH FLOOR ZONE 5	1-100
M-422	COLD WATER SYSTEM FOR GROUND FLOOR ZONE 6	1-100
M-423	COLD WATER SYSTEM FOR FIRST FLOOR ZONE 6	1-100
M-424	COLD WATER SYSTEM FOR ZONE 7	1-100
M-425	COLD WATER SYSTEM FOR ZONE 8	1-100
M-426	COLD WATER SYSTEM FOR GROUND FLOOR ZONE 9	1-100
M-427	COLD WATER SYSTEM FOR ROOF FLOOR ZONE 9	1-100
M-501	RAIN WATER SYSTEM FOR FIRST FLOOR ZONE 1	1-100
M-502	RAIN WATER SYSTEM FOR SECOND FLOOR ZONE 1	1-100
M-503	RAIN WATER SYSTEM FOR THIRD FLOOR ZONE 1	1-100
M-504	RAIN WATER SYSTEM FOR MANAGEMENT TOWER	1-100
M-505	RAIN WATER SYSTEM FOR FIRST FLOOR ZONE 2	1-100
M-506	RAIN WATER SYSTEM FOR SECOND FLOOR ZONE 2	1-100
M-507	RAIN WATER SYSTEM FOR ROOF FLOOR ZONE 2	1-100
M-508	RAIN WATER SYSTEM FOR GROUND FLOOR ZONE 3	1-100
M-509	RAIN WATER SYSTEM FOR FIRST FLOOR ZONE 3	1-100
M-510	RAIN WATER SYSTEM FOR SECOND FLOOR ZONE 3	1-100
M-511	RAIN WATER SYSTEM FOR ROOF FLOOR ZONE 3	1-100
M-512	RAIN WATER SYSTEM FOR GROUND FLOOR ZONE 4	1-100
M-513	RAIN WATER SYSTEM FOR FIRST FLOOR ZONE 4	1-100

MECHANICAL DRAWINGS

DRAWING No	DRAWING TITLE	SCALE
M-514	RAIN WATER SYSTEM FOR SECOND FLOOR ZONE 4	1-100
M-515	RAIN WATER SYSTEM FOR THIRD FLOOR ZONE 4	1-100
M-516	RAIN WATER SYSTEM FOR GROUND FLOOR ZONE 5	1-100
M-517	RAIN WATER SYSTEM FOR FIRST FLOOR ZONE 5	1-100
M-518	RAIN WATER SYSTEM FOR SECOND FLOOR ZONE 5	1-100
M-519	RAIN WATER SYSTEM FOR THIRD FLOOR ZONE 5	1-100
M-520	RAIN WATER SYSTEM FOR FOURTH FLOOR ZONE 5	1-100
M-521	RAIN WATER SYSTEM FOR FIFTH FLOOR ZONE 5	1-100
M-522	RAIN WATER SYSTEM FOR ROOF FLOOR ZONE 5	1-100
M-523	RAIN WATER SYSTEM FOR ZONE 7	1-100
M-524	RAIN WATER AND FIRE FIGHTING SYSTEM FOR ZONE 8	1-100
M-601	HEATING SYSTEM FOR FLOOR ZONE 1	1-100
M-602	HEATING SYSTEM FOR SECOND FLOOR ZONE 1	1-100
M-603	HEATING SYSTEM FOR THIRD FLOOR ZONE 1	1-100
M-604	HEATING SYSTEM FOR MANAGEMENT TOWER (ZONE 1)	1-100
M-605	HEATING SYSTEM FOR GROUND FLOOR ZONE 5	1-100
M-606	HEATING SYSTEM FOR FIRST FLOOR ZONE 5	1-100
M-607	HEATING SYSTEM FOR SECOND FLOOR ZONE 5	1-100
M-608	HEATING SYSTEM FOR THIRD FLOOR ZONE 5	1-100
M-609	HEATING SYSTEM FOR FOURTH FLOOR ZONE 5	1-100
M-610	HEATING SYSTEM FOR ZONE 7	1-100
M-611	HEATING SYSTEM FOR ZONE 8	1-100
M-701	MECHANICAL DETAILS	1-100
M-702	MECHANICAL DETAILS	---
M-703	MECHANICAL DETAILS	---
M-704	MECHANICAL DETAILS	---
M-705	MECHANICAL DETAILS	---

LEGEND OF SYMBOLS

	REINFORCED CONCRETE
	STONE
	CONCRETE BLOCK
	PLAIN CONCRETE MORTAR
	PLASTER FINE AGGREGATE FILL
	COMPACTED SOIL
	WATERPROOFING MEMBRANE
	POLYETHYLENE SHEETS SEPARATION LAYER
	SOLID WOOD BATTEN
	HARD CORE
	SECTION SECTION LINE
	CENTER LINE
	DETAIL# DETAIL REFERENCE
	ROOM #
	FLOOR LEVEL ON PLAN
	FLOOR LEVEL ON ELEVATION
	FINISHES
	DOOR/WINDOW OPENING# DOOR/WINDOW TYPE DOOR/WINDOW REFERENCE DWG#

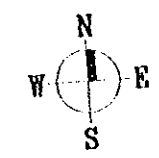
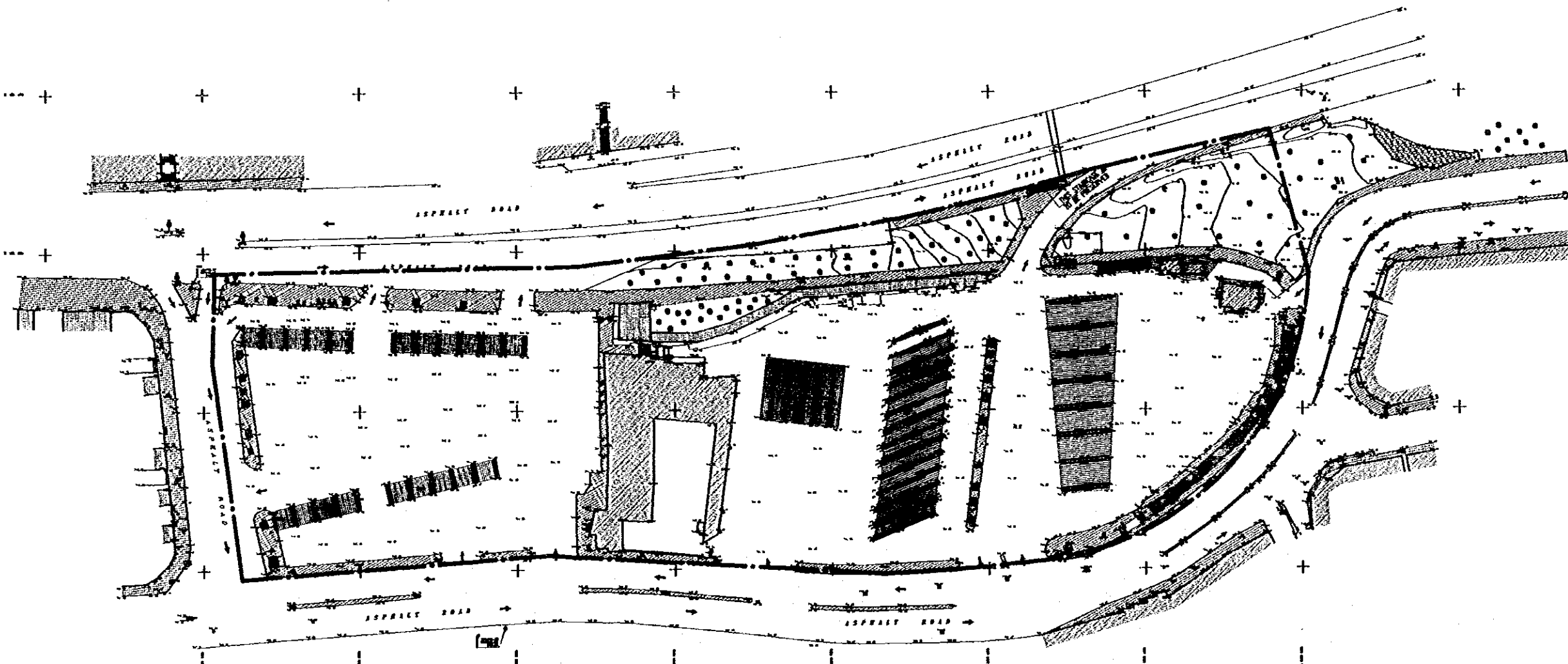
ALL DIMENSIONS ARE IN CENTIMETERS UNLESS OTHERWISE NOTED
ALL LEVELS ARE IN METERS.

Designed by:
Japan International Cooperation Agency (JICA)
JICA Study Team:
Joint Venture of Pacific Consultants International and Yamatai Sekkei Inc.
Subcontracted Local Consultant:
TIBM Consultants
Architects, Engineers

Raghadan Bus Terminal

LIST OF DRAWINGS & LEGEND

Sheet No. Drawing No. RBT . A001



Tourism Sector Development Project
in the Hashemite Kingdom of Jordan

The Government of
the Hashemite Kingdom of Jordan
The Ministry of Tourism and Antiquities
The Ministry of Planning

Sub-Project:
Amman Downtown
Tourist Zone Development

Note:

- The detailed design has been executed by a team of consultants as shown below in accordance with the agreement between Japan International Cooperation Agency (JICA) and JICA Study Team.
- The copyright of this drawing rests with JICA.

NOTES:


- ALL STEEL STRUCTURES WILL BE DISMANTLED BY CAM.
- ALL OTHER STRUCTURES WILL BE WITH IN THE SCOPE OF WORK.

CONSTRUCTION AREA

Designed by:
Japan International Cooperation Agency
(JICA)

JICA Study Team:
Joint Venture of
Pacific Consultants International and
Yamashita Seteki Inc.

Subcontracted Local Consultant:
TIBAH Consultants
Architects, Engineers

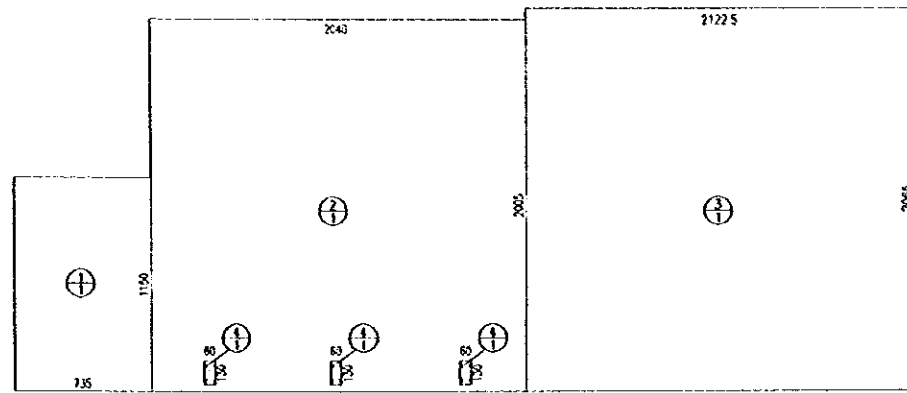


Raghadan Bus Terminal

Drawing Title:
SITE TOPOGRAPHY AND
EXISTING LAYOUT

Scale: 1/750 Drawing No: RBT. A003

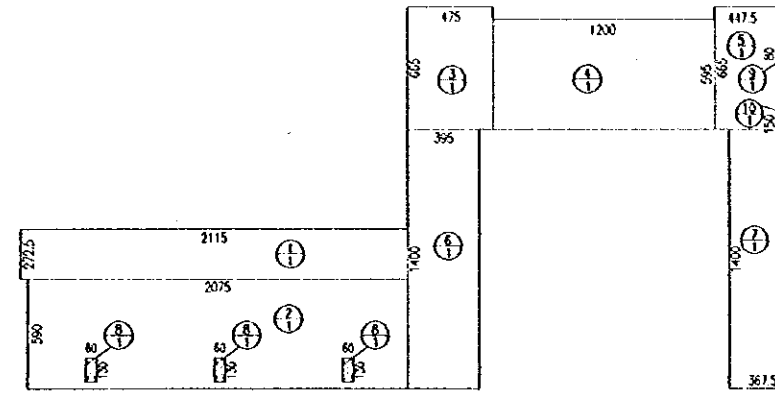
Note:
• This detailed design has been executed by a team of consultants as shown below in accordance with the agreement between Japan International Cooperation Agency (JICA) and JICA Study Team.
• The copyright of this drawing rests with JICA.



First floor plan - Zone 1
1:200

First floor - Zone 1

No.	DATA	SINGLE AREA	BY	SINGLE AREA TOTAL
1	11.500 X 7.350	84.525	1	84.525
2	20.430 X 20.050	409.020	1	409.020
3	21.225 X 20.650	438.296	1	438.296
4	1.300 X 0.600	-0.780	3	-2.340
TOTAL				929.501



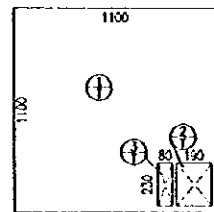
Second floor plan - Zone 1
1:200

Second floor - Zone 1

No.	DATA	SINGLE AREA	BY	SINGLE AREA TOTAL
1	21.150 X 2.725	57.633	1	57.633
2	20.750 X 5.900	122.425	1	122.425
3	6.650 X 4.750	31.587	1	31.587
4	17.000 X 5.950	71.420	1	71.420
5	6.650 X 4.575	29.758	1	29.758
6	14.000 X 3.950	55.300	1	55.300
7	14.000 X 3.675	51.450	1	51.450
8	1.300 X 0.600	-0.780	3	-2.340
9	0.800 X 0.600	-0.480	1	-0.480
10	1.500 X 0.700	-1.050	1	-1.050
TOTAL				415.883

Zone 1

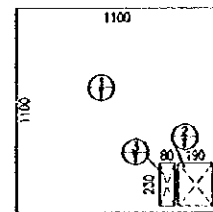
ITEM	FLOOR AREA
First Floor	929.501
Second Floor	415.883
TOTAL	1345.384



First floor plan
Management Tower
1:200

First floor - Management Tower

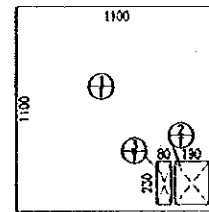
No.	DATA	SINGLE AREA	BY	SINGLE AREA TOTAL
1	11.000 X 11.000	121.000	1	121.000
2	2.300 X 1.900	-4.370	1	-4.370
3	2.300 X 0.800	-1.840	1	-1.840
TOTAL				114.790



Second floor plan
Management Tower
1:200

Second floor - Management Tower

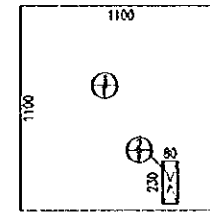
No.	DATA	SINGLE AREA	BY	SINGLE AREA TOTAL
1	11.000 X 11.000	121.000	1	121.000
2	2.300 X 1.900	-4.370	1	-4.370
3	2.300 X 0.800	-1.840	1	-1.840
TOTAL				114.790



Third floor plan
Management Tower
1:200

Third floor - Management Tower

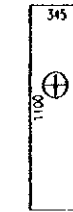
No.	DATA	SINGLE AREA	BY	SINGLE AREA TOTAL
1	11.000 X 11.000	121.000	1	121.000
2	2.300 X 1.900	-4.370	1	-4.370
3	2.300 X 0.800	-1.840	1	-1.840
TOTAL				114.790



Fourth floor plan
Management Tower
1:200

Fourth floor - Management Tower

No.	DATA	SINGLE AREA	BY	SINGLE AREA TOTAL
1	11.000 X 11.000	121.000	1	121.000
2	2.300 X 0.800	-1.840	1	-1.840
TOTAL				119.160



Fifth floor plan
Management Tower
1:200

Fifth floor - Management Tower

No.	DATA	SINGLE AREA	BY	SINGLE AREA TOTAL
1	11.000 X 3.450	37.950	1	37.950
TOTAL				37.950

Management Tower

ITEM	FLOOR AREA
First Floor	114.790
Second Floor	114.790
Third Floor	114.790
Fourth Floor	119.160
Fifth Floor	37.950
TOTAL	501.480

Designed by:
Japan International Cooperation
Agency (JICA)

JICA Study Team:
Joint Venture of
Pacific Consultants International and
Yamamoto Sekkei Inc.

Subcontracted Local Consultant:

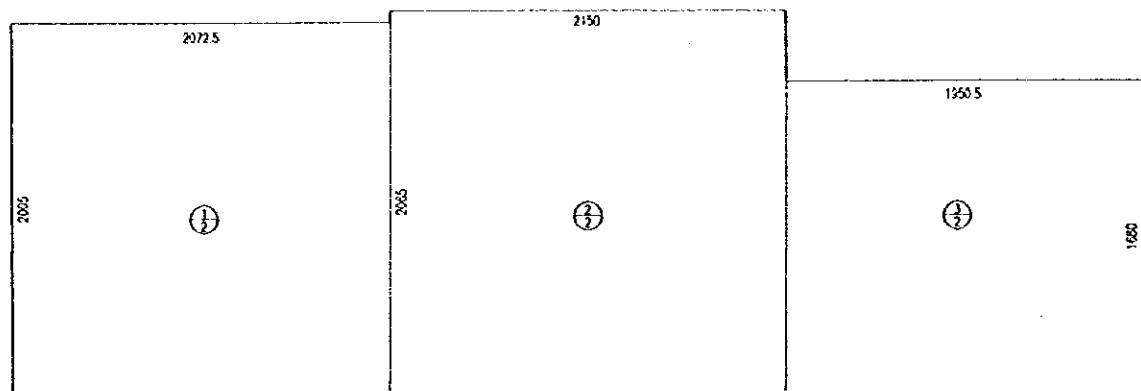
TIBAH Consultants
Architects, Engineers


Raghadan Bus Terminal

Drawing Title:
Floor Area Schedule
Zone 1 & Management Tower

Scale: 1:200
Drawing No.: RBT. A004

Note:
• This detailed design has been executed by a team of consultants as shown below in accordance with the agreement between Japan International Cooperation Agency (JICA) and JICA Study Team.
• The copyright of this drawing rests with JICA.

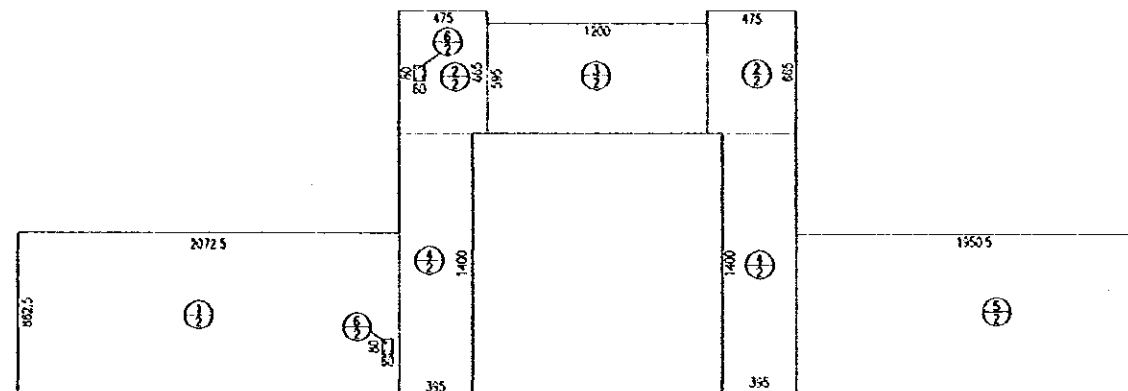


First floor plan - Zone 2

1:200

First floor - Zone 2

No.	DATA	SINGLE AREA	BY	SINGLE AREA TOTAL
1	20.725 X 20.050	415.536	1	415.536
2	21.500 X 20.650	443.975	1	443.975
3	19.505 X 16.830	327.684	1	327.684
TOTAL				1187.195



Second floor plan - Zone 2

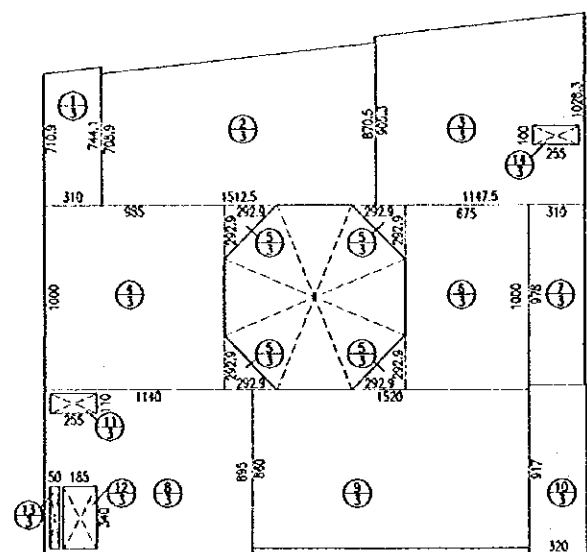
1:200

Second floor - Zone 2

No.	DATA	SINGLE AREA	BY	SINGLE AREA TOTAL
1	20.725 X 8.625	178.753	1	178.753
2	6.650 X 4.750	31.587	2	63.174
3	12.000 X 5.950	71.400	1	71.400
4	14.000 X 3.950	55.300	2	110.600
5	19.505 X 8.550	166.767	1	166.767
6	0.800 X 0.600	-0.480	2	-0.960
TOTAL				589.734

Zone 2

ITEM	FLOOR AREA
First Floor	1187.195
Second Floor	589.734
TOTAL	1776.929

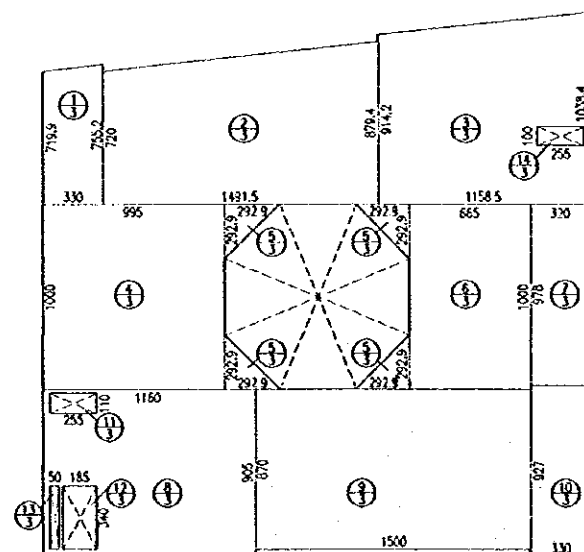


Ground floor plan - Zone 3

1:200

Ground floor - Zone 3

No.	DATA	SINGLE AREA	BY	SINGLE AREA TOTAL
1	0.500 X (7.109 + 7.411) X 3.100	22.552	1	22.552
2	0.500 X (7.689 + 8.705) X 15.125	119.442	1	119.442
3	0.500 X (9.053 + 10.233) X 11.425	110.940	1	110.940
4	10.000 X 9.850	98.500	1	98.500
5	0.500 X 2.929 X 2.929	4.289	4	17.156
6	10.000 X 8.750	87.500	1	87.500
7	9.780 X 3.100	30.318	1	30.318
8	11.400 X 8.950	102.030	1	102.030
9	15.200 X 8.600	130.720	1	130.720
10	9.170 X 3.200	29.344	1	29.344
11	2.550 X 1.100	-2.805	1	-2.805
12	1.400 X 1.850	-6.290	1	-6.290
13	1.400 X 0.500	-1.700	1	-1.700
14	2.550 X 1.000	-2.550	1	-2.550
TOTAL				715.157

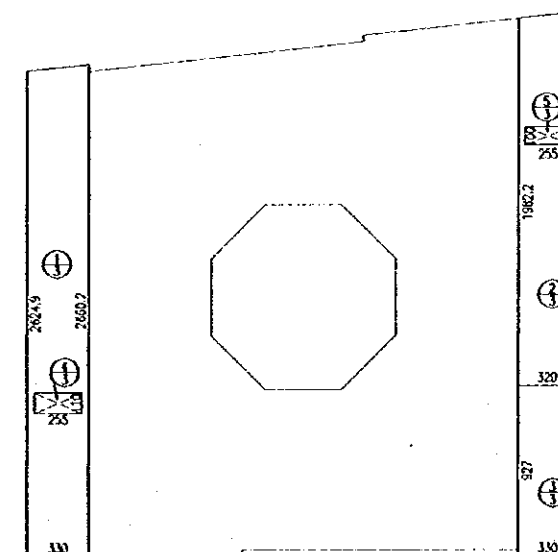


First floor plan - Zone 3

1:200

First floor - Zone 3

No.	DATA	SINGLE AREA	BY	SINGLE AREA TOTAL
1	0.500 X (7.195 + 7.552) X 3.300	24.332	1	24.332
2	0.500 X (7.200 + 8.794) X 14.915	119.275	1	119.275
3	0.500 X (9.142 + 10.364) X 11.585	113.104	1	113.104
4	10.000 X 9.950	99.500	1	99.500
5	0.500 X 2.929 X 2.929	4.289	4	17.156
6	10.000 X 6.750	67.500	1	67.500
7	9.780 X 3.100	31.296	1	31.296
8	11.400 X 8.950	104.980	1	104.980
9	15.200 X 8.600	130.500	1	130.500
10	9.170 X 3.200	30.531	1	30.531
11	2.550 X 1.100	-2.805	1	-2.805
12	1.400 X 1.850	-6.290	1	-6.290
13	1.400 X 0.500	-1.700	1	-1.700
14	2.550 X 1.000	-2.550	1	-2.550
TOTAL				723.889



Second floor plan - Zone 3

1:200

Second floor - Zone 3

No.	DATA	SINGLE AREA	BY	SINGLE AREA TOTAL
1	0.500 X (25.802 + 26.249) X 3.300	87.204	1	87.204
2	0.500 X (29.164 + 19.822) X 3.200	63.977	1	63.977
3	9.270 X 3.300	30.591	1	30.591
4	2.550 X 1.100	-2.805	1	-2.805
5	2.550 X 1.000	-2.550	1	-2.550
TOTAL				176.417

Zone 3

ITEM	FLOOR AREA
Ground Floor	715.157
First Floor	723.889
Second Floor	176.417
TOTAL	1615.463

Designed by:

Japan International Cooperation Agency (JICA)

JICA Study Team:

Joint Venture of
Pacific Consultants International and
Yamashita Sekkel Inc.

Subcontracted Local Consultant:

TIBAH Consultants
Architects, Engineers

Signature and stamp of TIBAH Consultants.

Raghadan Bus Terminal

Drawing Title:

Floor Area Schedule
Zone 2 & Zone 3

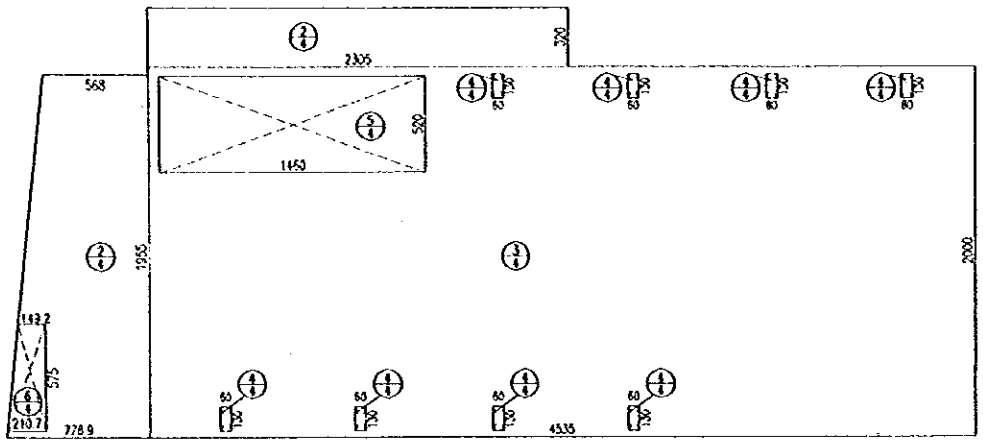
Scale:

1:200

Drawing No.:

RBT. A-005

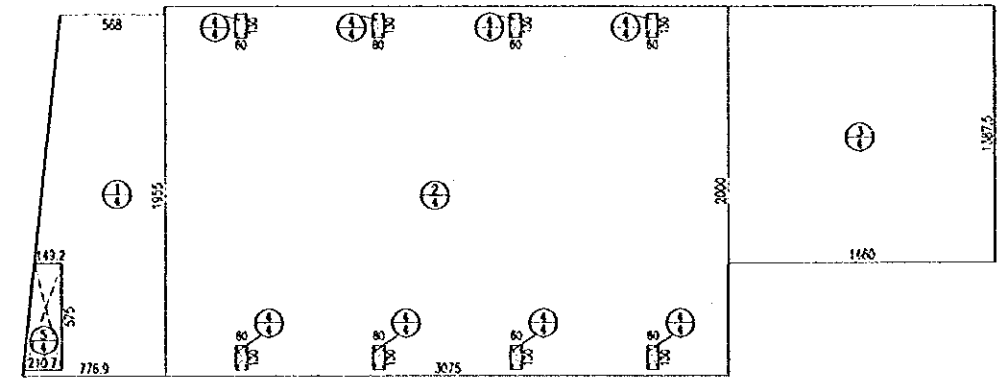
Note:
• This detailed design has been executed by a team of consultants as shown below in accordance with the agreement between Japan International Cooperation Agency (JICA) and JICA Study Team.
• The copyright of this drawing rests with JICA.



Ground floor plan - Zone 4
1:200

Ground floor - Zone 4

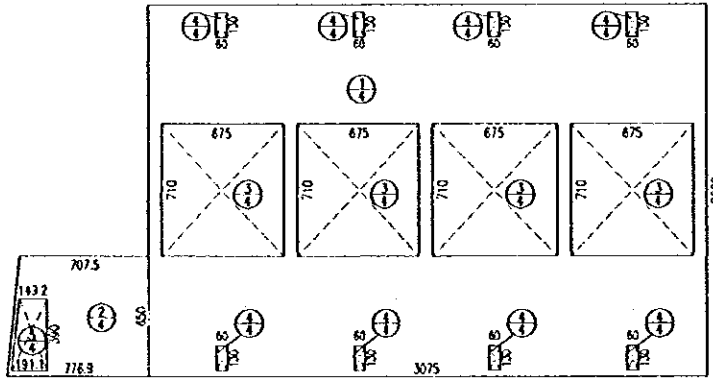
No.	DATA	SINGLE AREA	BY	SINGLE AREA TOTAL
1	0.500 X (7.789 + 5.680) X 19.550	131.463	1	131.463
2	23.050 X 3.200	73.760	1	73.760
3	45.350 X 20.000	907.000	1	907.000
4	1.300 X 0.600	-0.780	8	-6.240
5	14.600 X 5.200	-75.920	1	-75.920
6	0.500 X (2.137 + 1.432) X 5.750	-10.347	1	-10.347
TOTAL				1019.718



First floor plan - Zone 4
1:200

First floor - Zone 4

No.	DATA	SINGLE AREA	BY	SINGLE AREA TOTAL
1	0.500 X (7.789 + 5.680) X 19.550	131.463	1	131.463
2	30.750 X 20.000	615.000	1	615.000
3	14.600 X 13.875	202.575	1	202.575
4	1.300 X 0.600	-0.780	8	-6.240
5	0.500 X (2.107 + 1.432) X 5.750	-10.347	1	-10.347
TOTAL				932.451



Second floor plan - Zone 4
1:200

Second floor - Zone 4

No.	DATA	SINGLE AREA	BY	SINGLE AREA TOTAL
1	30.750 X 20.000	615.000	1	615.000
2	0.500 X (7.789 + 7.075) X 6.500	48.243	1	48.243
3	7.100 X 6.750	-47.925	4	-191.700
4	1.300 X 0.600	-0.780	8	-6.240
5	0.500 X (1.911 + 1.432) X 3.900	-6.635	1	-6.635
TOTAL				458.668

Zone 4

ITEM	FLOOR AREA
Ground Floor	1019.718
First Floor	932.451
Second Floor	458.668
TOTAL	2410.835

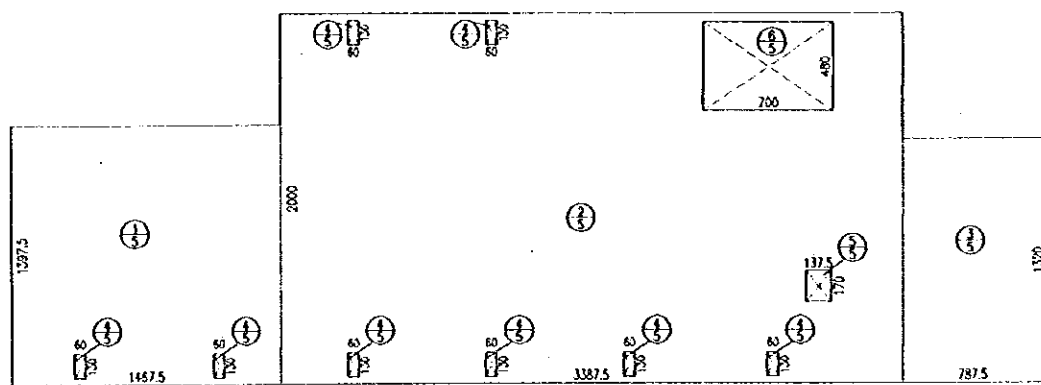
Designed by:
Japan International Cooperation Agency (JICA)
JICA Study Team:
Joint Venture of Pacific Consultants International and Yamasita Sekkei Inc.

Subcontracted Local Consultant:
TIBAH Consultants
Architects, Engineers

Raghadan Bus Terminal
Drawing Title:
Floor Area Schedule
Zone 4

Scale: 1:200
Drawing No: RBT . A-006

Note:
• This detailed design has been executed by a team of consultants as shown below in accordance with the agreement between Japan International Cooperation Agency (JICA) and JICA Study Team.
• The copyright of this drawing rests with JICA.

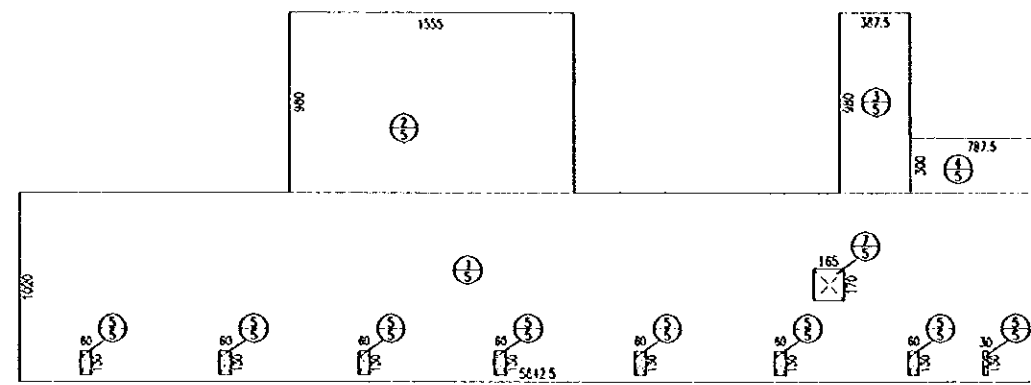


Ground floor plan - Zone 5

1:200

Ground floor - Zone 5

No.	DATA	SINGLE AREA	BY	SINGLE AREA TOTAL
1	14 675 X 13 975	84 525	1	84 525
2	33 875 X 20 000	679 020	1	679 020
3	13 200 X 7 875	438 256	1	438 256
4	1 300 X 0 600	-0 780	8	-8 240
5	1 700 X 1 375	-2 337	1	-2 337
6	7 000 X 4 800	-33 600	1	-33 600
TOTAL				944 356

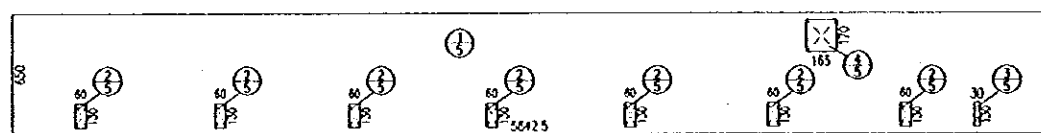


First floor plan - Zone 5

1:200

First floor - Zone 5

No.	DATA	SINGLE AREA	BY	SINGLE AREA TOTAL
1	56 425 X 10 200	575 535	1	575 535
2	15 550 X 9 850	152 380	1	152 380
3	9 800 X 3 875	37 975	1	37 975
4	7 875 X 3 000	23 625	1	23 625
5	1 300 X 0 600	-0 780	7	-5 460
6	1 300 X 0 300	-0 390	1	-0 390
7	1 700 X 1 650	-2 805	1	-2 805
TOTAL				780 870



First floor plan - Zone 5

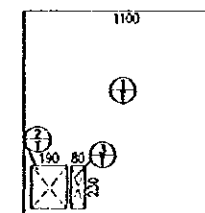
1:200

First floor - Zone 5

No.	DATA	SINGLE AREA	BY	SINGLE AREA TOTAL
1	56 425 X 6 500	366 762	1	366 762
2	1 300 X 0 600	-0 780	7	-5 460
3	1 300 X 0 300	-0 390	1	-0 390
4	1 700 X 1 650	-2 805	1	-2 805
TOTAL				358 107

Zone 5

ITEM	FLOOR AREA
Ground Floor	944 356
First Floor	780 870
Second Floor	358 107
TOTAL	2083 333

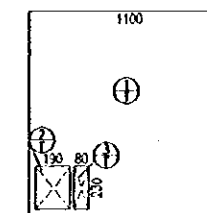


Ground floor plan
GAM Tower

1:200

Ground floor - GAM Tower

No.	DATA	SINGLE AREA	BY	SINGLE AREA TOTAL
1	11 000 X 11 000	121 000	1	121 000
2	2 300 X 1 900	-4 370	1	-4 370
3	2 300 X 0 800	-1 840	1	-1 840
TOTAL				114 790

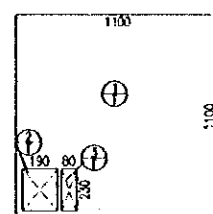


First floor plan
GAM Tower

1:200

First floor - GAM Tower

No.	DATA	SINGLE AREA	BY	SINGLE AREA TOTAL
1	11 000 X 11 000	121 000	1	121 000
2	2 300 X 1 900	-4 370	1	-4 370
3	2 300 X 0 800	-1 840	1	-1 840
TOTAL				114 790

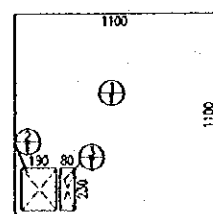


Second floor plan
GAM Tower

1:200

Second floor - GAM Tower

No.	DATA	SINGLE AREA	BY	SINGLE AREA TOTAL
1	11 000 X 11 000	121 000	1	121 000
2	2 300 X 1 900	-4 370	1	-4 370
3	2 300 X 0 800	-1 840	1	-1 840
TOTAL				114 790

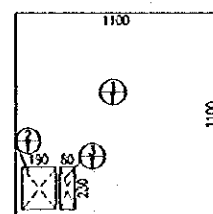


Third floor plan
GAM Tower

1:200

Third floor - GAM Tower

No.	DATA	SINGLE AREA	BY	SINGLE AREA TOTAL
1	11 000 X 11 000	121 000	1	121 000
2	2 300 X 1 900	-4 370	1	-4 370
3	2 300 X 0 800	-1 840	1	-1 840
TOTAL				114 790

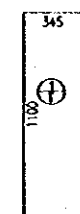


Fourth floor plan
GAM Tower

1:200

Fourth floor - GAM Tower

No.	DATA	SINGLE AREA	BY	SINGLE AREA TOTAL
1	11 000 X 11 000	121 000	1	121 000
2	2 300 X 1 900	-4 370	1	-4 370
3	2 300 X 0 800	-1 840	1	-1 840
TOTAL				114 790



Fifth floor plan
GAM Tower

1:200

Fifth floor - GAM Tower

No.	DATA	SINGLE AREA	BY	SINGLE AREA TOTAL
1	11 000 X 3 450	37 950	1	37 950
TOTAL				37 950

GAM Tower

ITEM	FLOOR AREA
Ground Floor	114 790
First Floor	114 790
Second Floor	114 790
Third Floor	114 790
Fourth Floor	114 790
Fifth Floor	37 950
TOTAL	616 270

Designed by:

Japan International Cooperation Agency (JICA)

JICA Study Team:

Joint Venture of
Pacific Consultants International and
Yamasita Sekkei Inc.

Subcontracted Local Consultant:

TIBA Consultants
Architects, Engineers

المهندسين المعماريين والهندسة المعمارية

Raghadan Bus Terminal

Drawing Title:

Floor Area Schedule
Zone 5 & GAM Tower

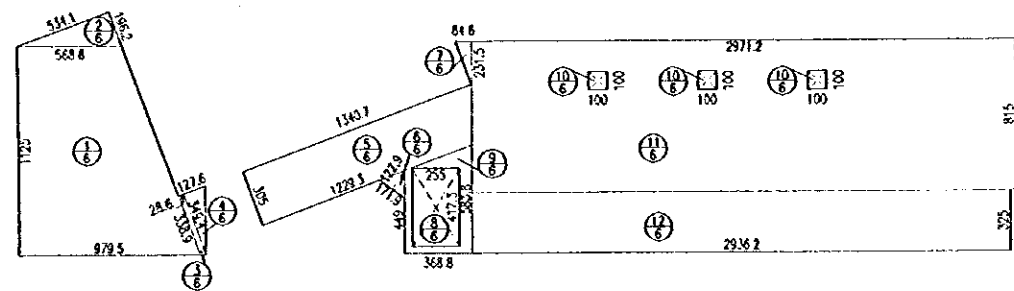
Scale:

1:200

Drawing No.:

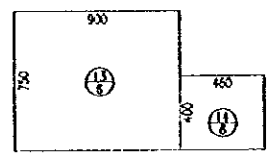
RBT. A-007

Note:
- This detailed design has been executed by a team of consultants as shown below in accordance with the agreement between Japan International Cooperation Agency (JICA) and JICA Study Team.
- The copyright of this drawing rests with JICA.



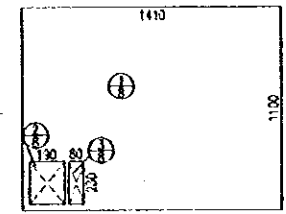
Ground floor plan - Zone 6
1:200

No.	DATA	SINGLE AREA	BY	SINGLE AREA TOTAL
1	0.500 X (5.688 + 9.795) X 11.250	87.080	1	87.080
2	0.500 X 5.341 X 1.962	5.239	1	5.239
3	0.500 X (3.363 + 3.434) X 0.286	0.984	1	0.984
4	0.500 X 3.434 X 1.276	2.229	1	2.229
5	0.500 X (13.637 + 12.293) X 3.050	39.192	4	39.192
6	0.500 X 1.719 X 1.229	1.056	1	1.056
7	0.500 X 2.315 X 0.846	0.979	1	0.979
8	4.173 X 2.550	-10.641	1	-10.641
9	0.500 X (4.430 + 5.838) X 3.688	19.041	1	19.041
10	1.000 X 1.000	-1.000	3	-3.000
11	29.712 X 8.150	242.152	1	242.152
12	29.362 X 3.250	95.425	1	95.425
13	9.000 X 7.500	67.500	1	67.500
14	4.600 X 4.000	18.400	1	18.400
TOTAL				565.643



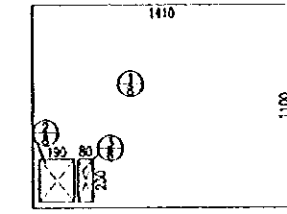
First floor plan
Police Tower
1:200

No.	DATA	SINGLE AREA	BY	SINGLE AREA TOTAL
1	14.1000 X 11.000	121.000	1	121.000
2	2.300 X 1.900	-4.370	1	-4.370
3	2.300 X 0.800	-1.840	1	-1.840
TOTAL				148.890



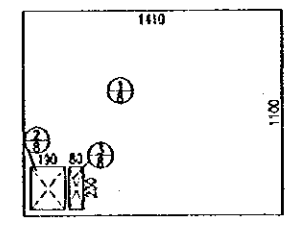
Second floor plan
Police Tower
1:200

No.	DATA	SINGLE AREA	BY	SINGLE AREA TOTAL
1	14.1000 X 11.000	121.000	1	121.000
2	2.300 X 1.900	-4.370	1	-4.370
3	2.300 X 0.800	-1.840	1	-1.840
TOTAL				148.890



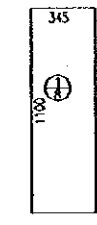
Third floor plan
Police Tower
1:200

No.	DATA	SINGLE AREA	BY	SINGLE AREA TOTAL
1	14.1000 X 11.000	121.000	1	121.000
2	2.300 X 1.900	-4.370	1	-4.370
3	2.300 X 0.800	-1.840	1	-1.840
TOTAL				148.890



Fourth floor plan
Police Tower
1:200

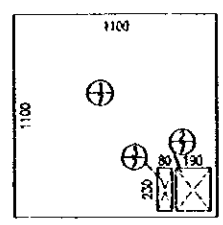
No.	DATA	SINGLE AREA	BY	SINGLE AREA TOTAL
1	14.1000 X 11.000	121.000	1	121.000
2	2.300 X 1.900	-4.370	1	-4.370
3	2.300 X 0.800	-1.840	1	-1.840
TOTAL				148.890



Fifth floor plan
Police Tower
1:200

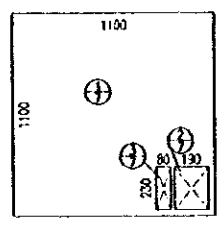
No.	DATA	SINGLE AREA	BY	SINGLE AREA TOTAL
1	11.000 X 3.450	37.950	1	37.950
TOTAL				37.950

ITEM	FLOOR AREA
First Floor	148.890
Second Floor	148.890
Third Floor	148.890
Fourth Floor	148.890
Fifth Floor	37.950
TOTAL	633.510



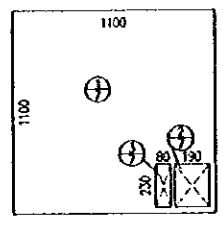
Ground floor plan
Civil Defence Tower
1:200

No.	DATA	SINGLE AREA	BY	SINGLE AREA TOTAL
1	11.000 X 11.000	121.000	1	121.000
2	2.300 X 1.900	-4.370	1	-4.370
3	2.300 X 0.800	-1.840	1	-1.840
TOTAL				114.790



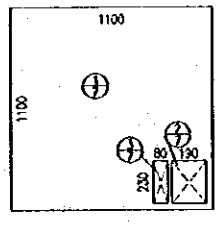
First floor plan
Civil Defence Tower
1:200

No.	DATA	SINGLE AREA	BY	SINGLE AREA TOTAL
1	11.000 X 11.000	121.000	1	121.000
2	2.300 X 1.900	-4.370	1	-4.370
3	2.300 X 0.800	-1.840	1	-1.840
TOTAL				114.790



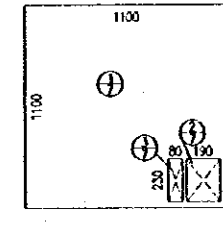
Second floor plan
Civil Defence Tower
1:200

No.	DATA	SINGLE AREA	BY	SINGLE AREA TOTAL
1	11.000 X 11.000	121.000	1	121.000
2	2.300 X 1.900	-4.370	1	-4.370
3	2.300 X 0.800	-1.840	1	-1.840
TOTAL				114.790



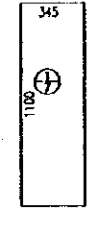
Third floor plan
Civil Defence Tower
1:200

No.	DATA	SINGLE AREA	BY	SINGLE AREA TOTAL
1	11.000 X 11.000	121.000	1	121.000
2	2.300 X 1.900	-4.370	1	-4.370
3	2.300 X 0.800	-1.840	1	-1.840
TOTAL				114.790



Fourth floor plan
Civil Defence Tower
1:200

No.	DATA	SINGLE AREA	BY	SINGLE AREA TOTAL
1	11.000 X 11.000	121.000	1	121.000
2	2.300 X 1.900	-4.370	1	-4.370
3	2.300 X 0.800	-1.840	1	-1.840
TOTAL				114.790



Fifth floor plan
Civil Defence Tower
1:200

No.	DATA	SINGLE AREA	BY	SINGLE AREA TOTAL
1	11.000 X 3.450	37.950	1	37.950
TOTAL				37.950

ITEM	FLOOR AREA
Ground Floor	114.790
First Floor	114.790
Second Floor	114.790
Third Floor	114.790
Fourth Floor	114.790
Fifth Floor	37.950
TOTAL	616.270

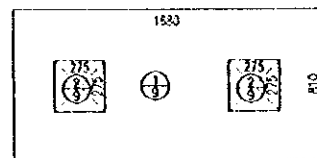
Designed by:
Japan International Cooperation Agency (JICA)
JICA Study Team:
Joint Venture of Pacific Consultants International and Yamasita Sekkel Inc.
Subcontracted Local Consultant:
TBAAH Consultants
Architects, Engineers

Raghadan Bus Terminal

Drawing Title:
Floor Area Schedule
Police & Civil Defence Tower

Scale: 1:200
Drawing No.: RBT. A-008

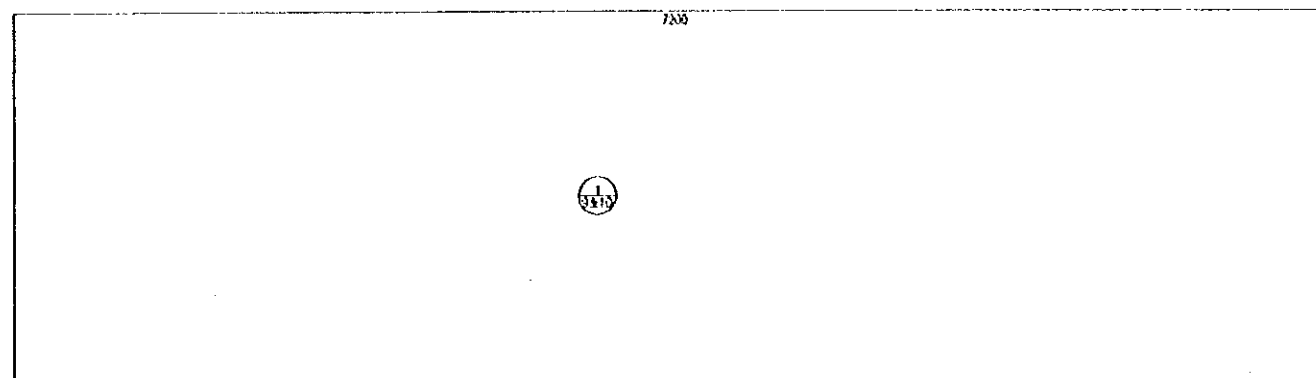
Note:
• This detailed design has been executed by a team of consultants as shown below in accordance with the agreement between Japan International Cooperation Agency (JICA) and JICA Study Team.
• The copyright of this drawing rests with JICA.



Large Bus Terminal plan - Zone 9
1:200

Ground floor - Zone 9

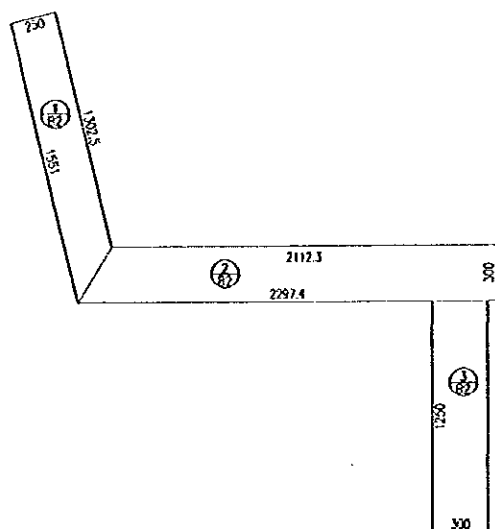
No.	DATA	SINGLE AREA	BY	SINGLE AREA TOTAL
1	18,800 X 8,100	136,080	1	136,080
2	2,750 X 2,750	-7,562	2	-15,124
TOTAL				120,956



Large Bus Terminal plan - Zone 9&10
1:200

Ground floor - Zone 9&10

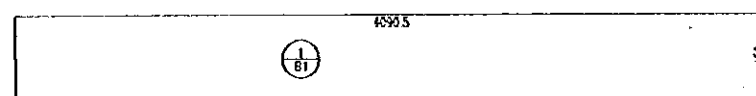
No.	DATA	SINGLE AREA	BY	SINGLE AREA TOTAL
1	72,000 X 20,000	1,440,000	1	1,440,000
TOTAL				1,440,000



Bridge No. 2 - Zone 1
1:200

Deck floor - Bridge No. 2

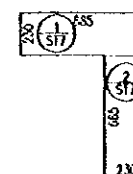
No.	DATA	SINGLE AREA	BY	SINGLE AREA TOTAL
1	0,500 X (13,025 + 15,510) X 2,500	35,668	1	35,668
2	0,500 X (21,123 + 22,974) X 3,000	66,145	1	66,145
3	12,500 X 3,000	37,500	1	37,500
TOTAL				139,313



Bridge No. 1 - Zone 3
1:200

Deck floor - Bridge No. 1

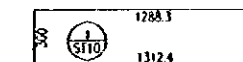
No.	DATA	SINGLE AREA	BY	SINGLE AREA TOTAL
1	40,965 X 4,500	1,844,025	1	1,844,025
TOTAL				1,844,025



Staircase #7 - Zone 4
1:200

Staircase #7 - Zone 4

No.	DATA	SINGLE AREA	BY	SINGLE AREA TOTAL
1	6,650 X 2,300	15,255	1	15,255
2	6,650 X 2,300	15,255	1	15,255
TOTAL				31,050



Staircase #10 - Zone 5
1:200

Staircase #10 - Zone 5

No.	DATA	SINGLE AREA	BY	SINGLE AREA TOTAL
1	0,500 X (13,124 + 12,885) X 3,000	39,010	1	39,010
TOTAL				39,010

RC Buildup Area

ITEM	FLOOR AREA
Zone 1	1345,134
Zone 2	1778,529
Zone 3	1615,463
Zone 4	2410,835
Zone 5	2083,333
Zone 8	565,640
Management Tower - Zone 1	501,430
CAM Tower - Zone 5	618,270
Civil Defence Tower - Zone 7	618,270
Police Tower - Zone 8	633,510
Large Bus Terminal - Zone 9	120,956
Staircase #7 - Zone 4	31,050
TOTAL	12316,920

Steel Buildup Area

ITEM	FLOOR AREA
Bridge No. 1 - Zone 3	1,844,025
Bridge No. 2 - Zone 1	164,072
Staircase #10 - Zone 5	39,010
Large Bus Terminal - Zone 9&10	1,440,000
TOTAL	1,802,355

Designed by:
Japan International Cooperation Agency (JICA)

JICA Study Team:
Joint Venture of
Pacific Consultants International and
Yamashita Sekkei Inc.

Subcontracted Local Consultant:
TIBAH Consultants
Architects, Engineers

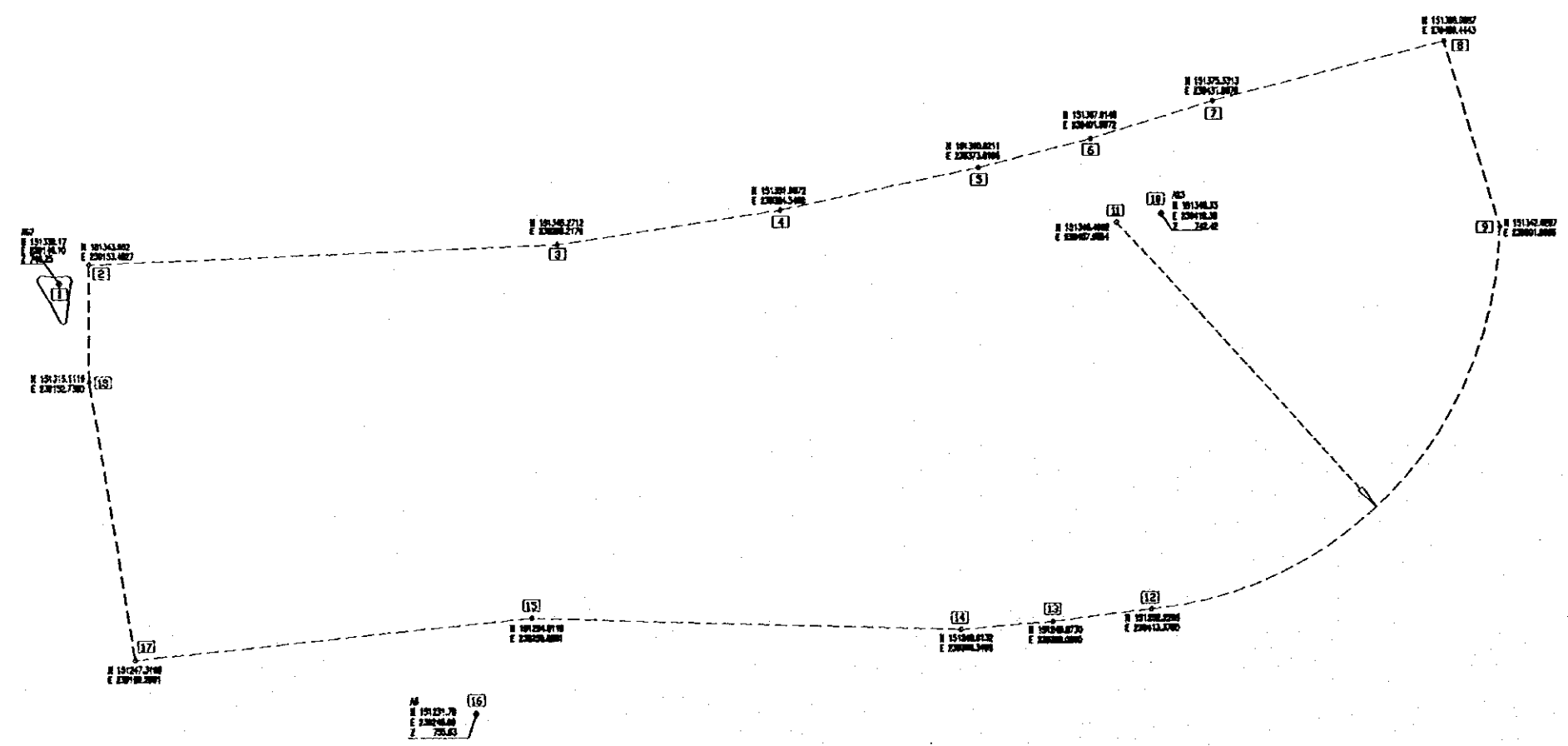
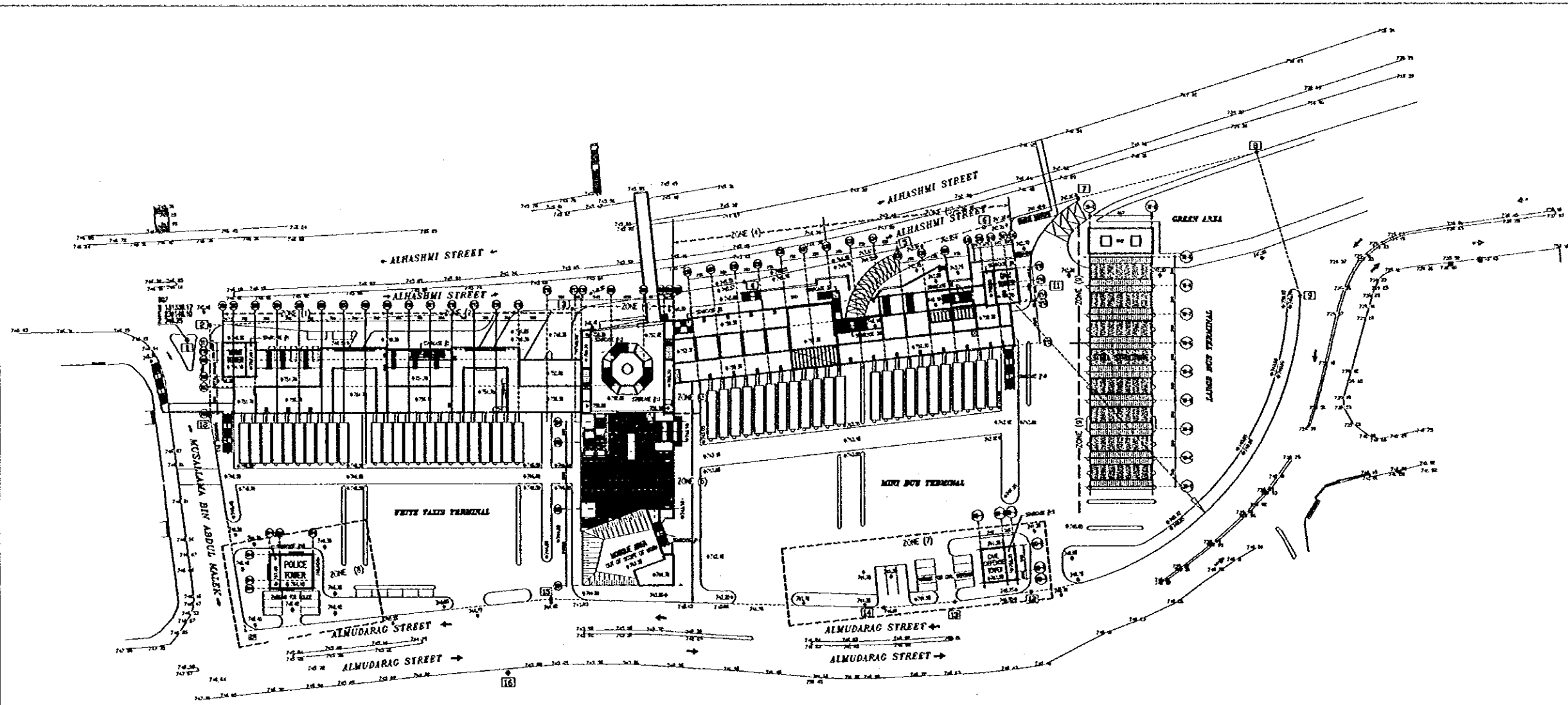
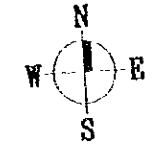
مشاركون محليين
TIBAH Consultants
Architects, Engineers

Raghadan Bus Terminal

Drawing Title:
Floor Area Schedule
Zone 9&10 & Others

Scale: 1:200
Drawing No.: RBT. A-009

Note:
• This detailed design has been executed by a team of consultants as shown below in accordance with the agreement between Japan International Cooperation Agency (JICA) and JICA Study Team.
• The copyright of this drawing rests with JICA.



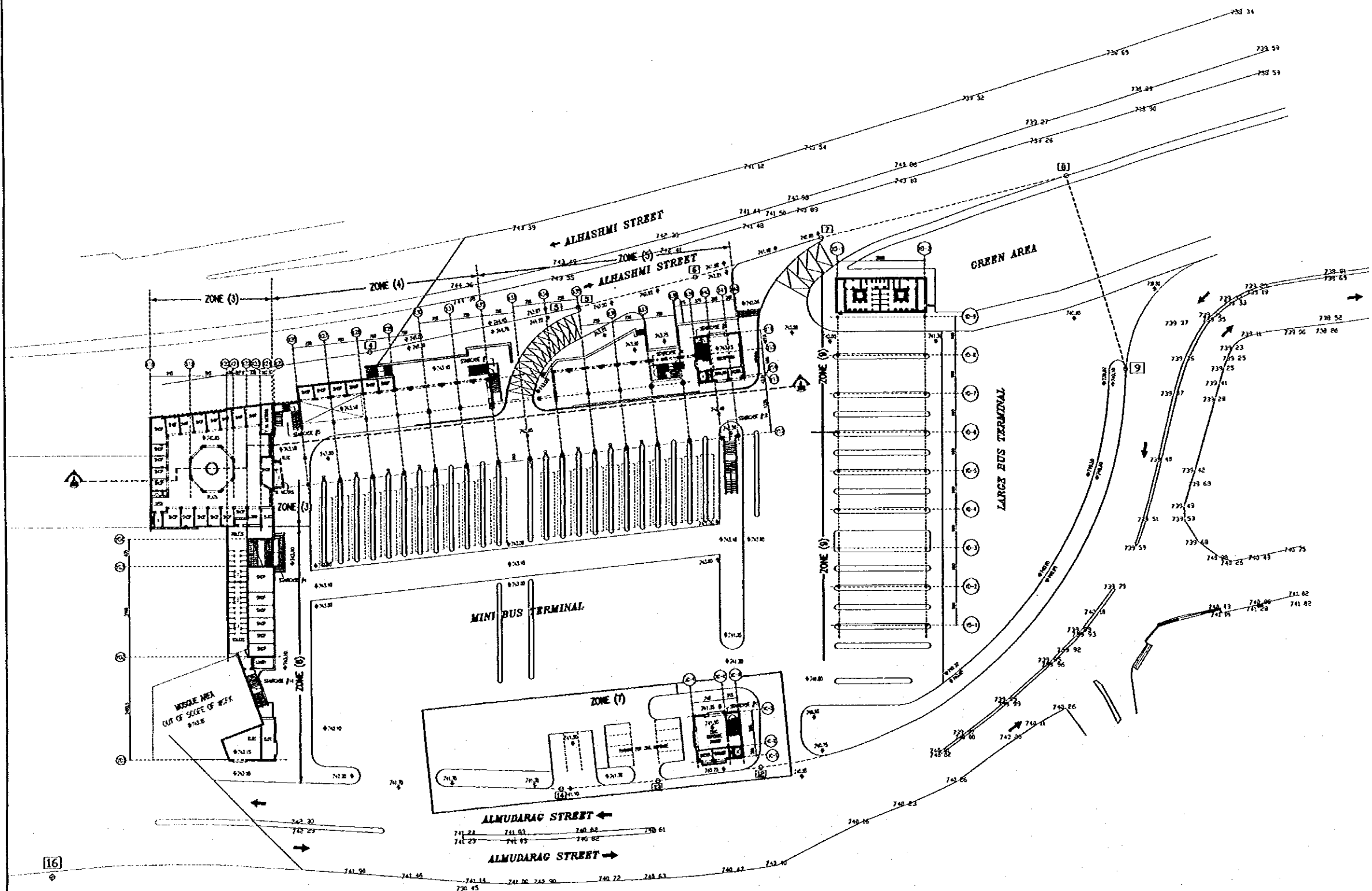
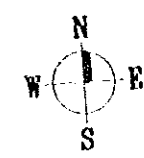
Designed by:
Japan International Cooperation Agency (JICA)
JICA Study Team:
Joint Venture of Pacific Consultants International and Yamasita Sekkel Inc.
Subcontracted Local Consultant:
TIBAH Consultants
Architects, Engineers

Raghadan Bus Terminal

Drawing Title:
PROJECT SITE & ZONING PLAN

Scale: 1/750
Drawing No.: RBT .A101

Note:
• This detailed design has been executed by a team of consultants as shown below in accordance with the agreement between Japan International Cooperation Agency (JICA) and JICA Study Team.
• The copyright of this drawing rests with JICA.

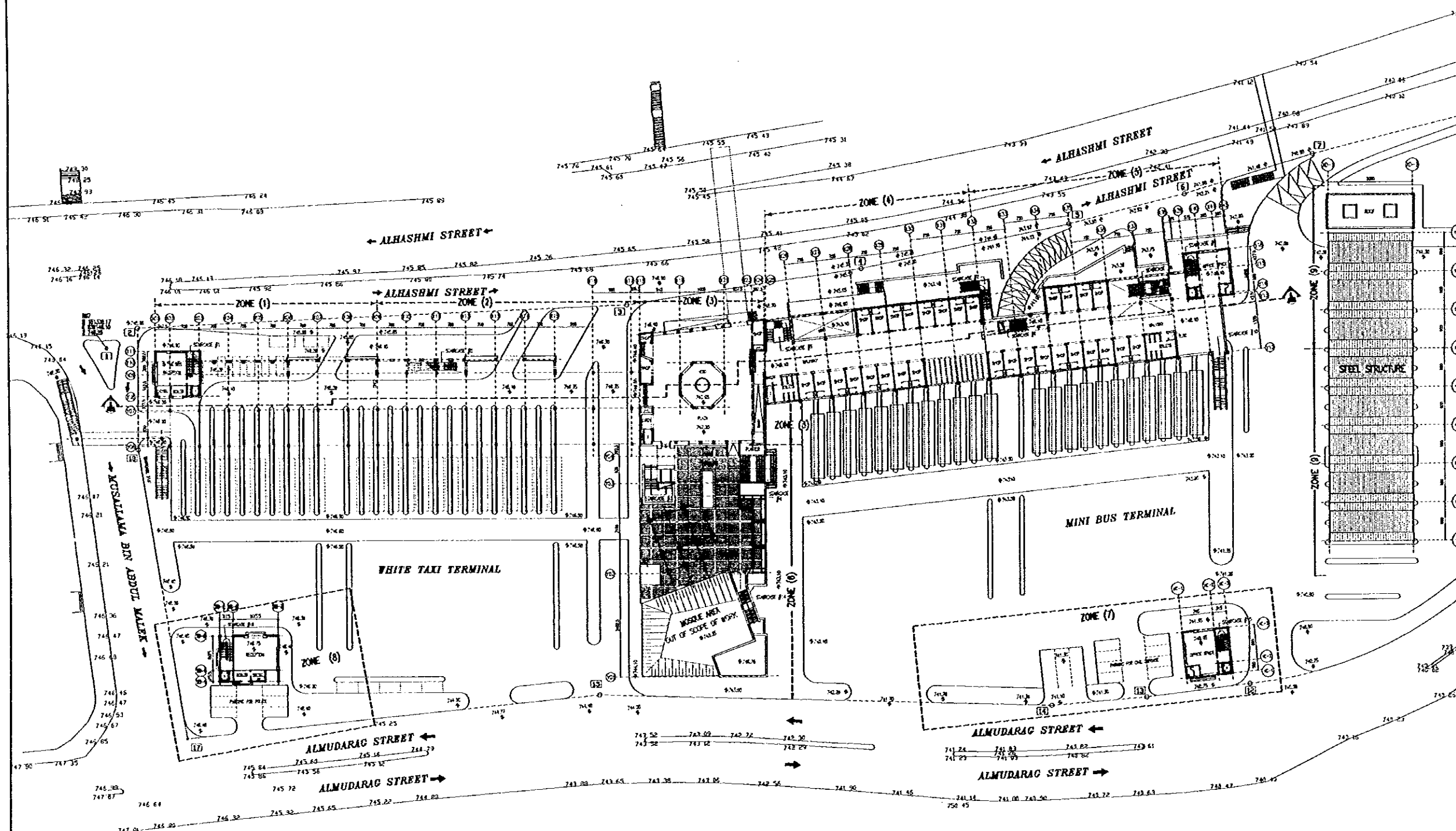


Designed by:
Japan International Cooperation Agency (JICA)
JICA Study Team:
Joint Venture of Pacific Consultants International and Yamasita Sekkei Inc.
Subcontracted Local Consultant:
TIBAH Consultants Architects, Engineers

Raghadan Bus Terminal
Drawing Title:
GROUND FLOOR PLAN

Scale: 1/500
Drawing No.: RBT.A102

Note:
• This detailed design has been executed by a team of consultants as shown below in accordance with the agreement between Japan International Cooperation Agency (JICA) and JICA Study Team.
• The copyright of this drawing rests with JICA.



Designed by:

Japan International Cooperation Agency (JICA)

JICA Study Team:

Joint Venture of
Pacific Consultants International and
Yamato Sekkei Inc.

Subcontracted Local Consultant:

TIBAH Consultants
Architects, Engineers



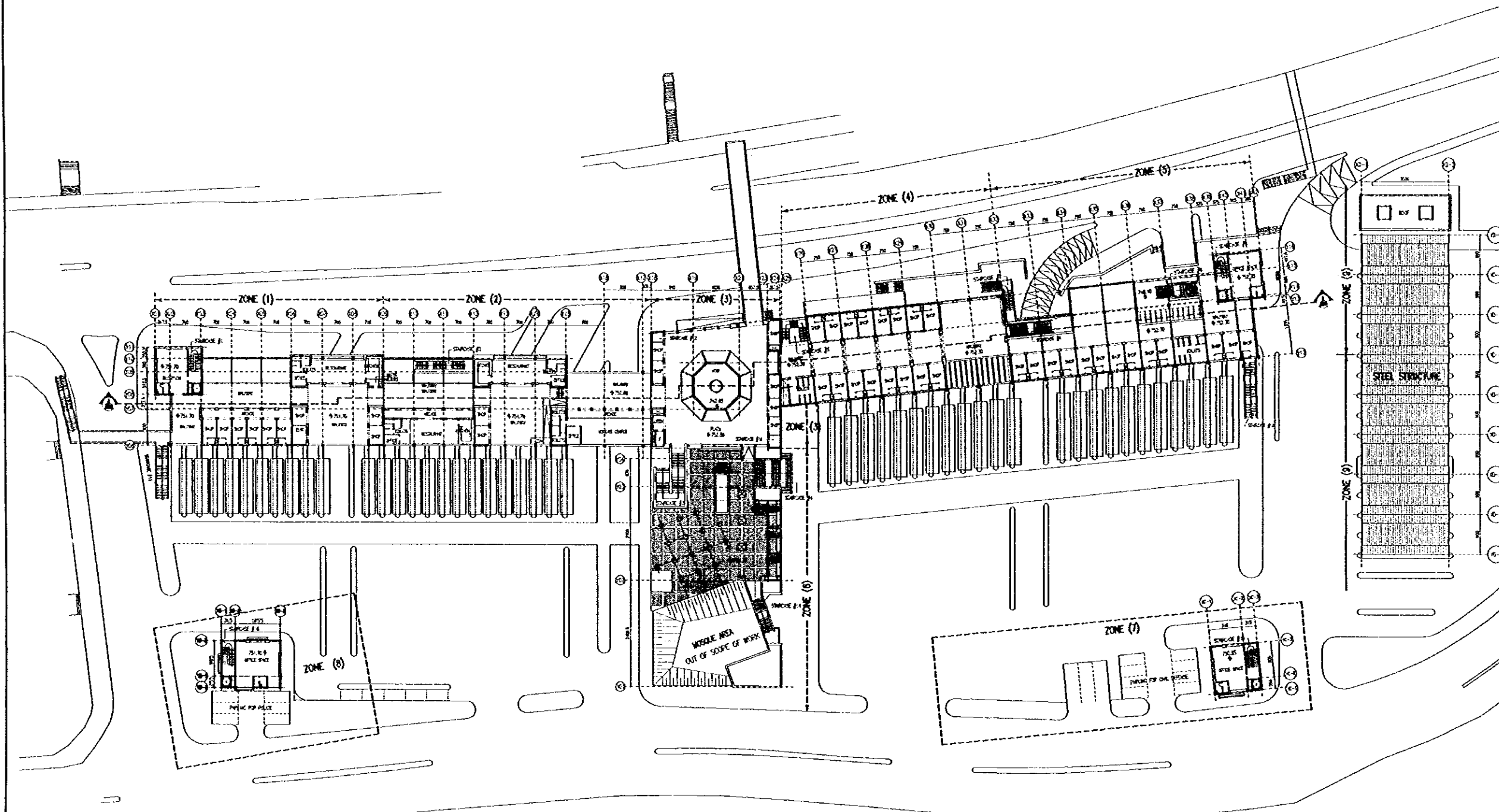
Raghadan Bus Terminal

Drawing Title:
FIRST FLOOR PLAN

Scale:
1/500

Drawing No.:
RBT . A103

Note:
• This detailed design has been executed by a team of consultants as shown below in accordance with the agreement between Japan International Cooperation Agency (JICA) and JICA Study Team.
• The copyright of this drawing rests with JICA.

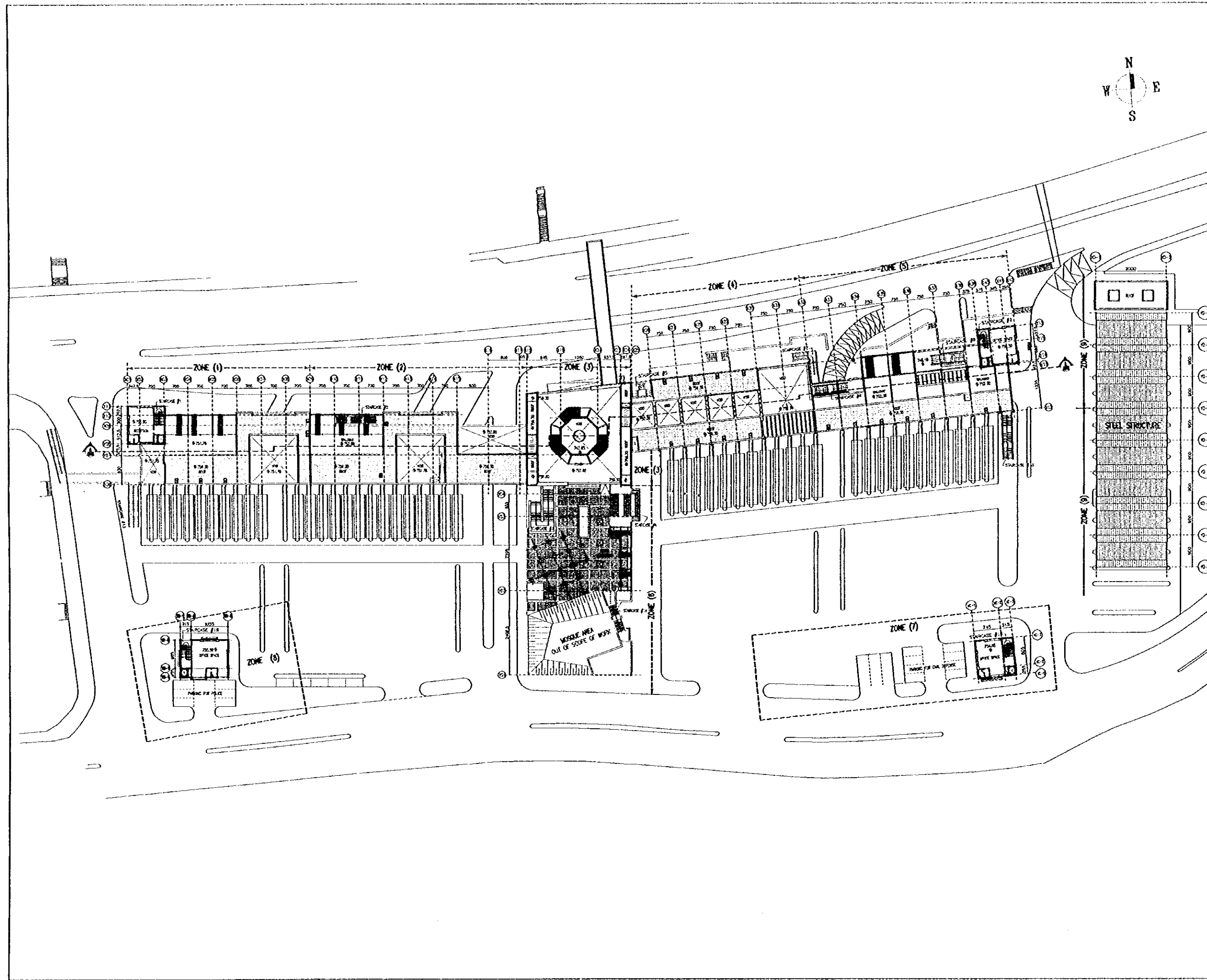


Designed by:
Japan International Cooperation Agency (JICA)
JICA Study Team:
Joint Venture of Pacific Consultants International and Yamashita Sekkei Inc.
Subcontracted Local Consultant:
TIBAH Consultants Architects, Engineers

Raghadan Bus Terminal
Drawing Title:
SECOND FLOOR PLAN

Scale: 1/500 Drawing No: RBT . A104

Note:
• This detailed design has been executed by a team of consultants as shown below in accordance with the agreement between Japan International Cooperation Agency (JICA) and JICA Study Team.
• The copyright of this drawing rests with JICA.

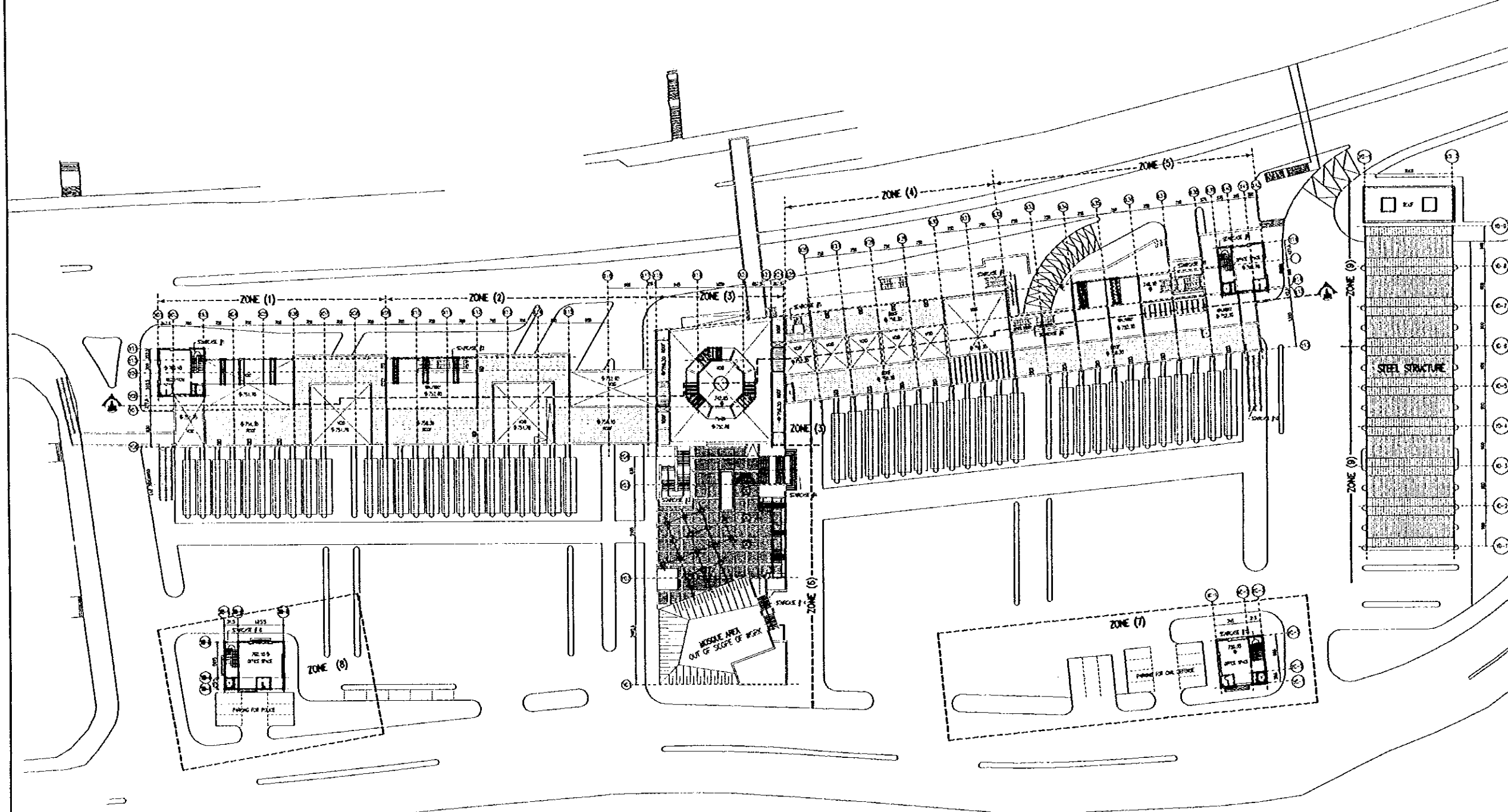
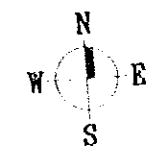


Designed by:
Japan International Cooperation Agency (JICA)
JICA Study Team:
Joint Venture of
Pacific Consultants International and
Yamashita Sekkei Inc.
Subcontracted Local Consultant:
TIBAH Consultants
Architects, Engineers


Raghadan Bus Terminal
Drawing Title:
THIRD FLOOR PLAN

Scale:
1/500
Drawing No.:
RBT . A105

Note:
• This detailed design has been executed by a team of consultants as shown below in accordance with the agreement between Japan International Cooperation Agency (JICA) and JICA Study Team.
• The copyright of this drawing rests with JICA.

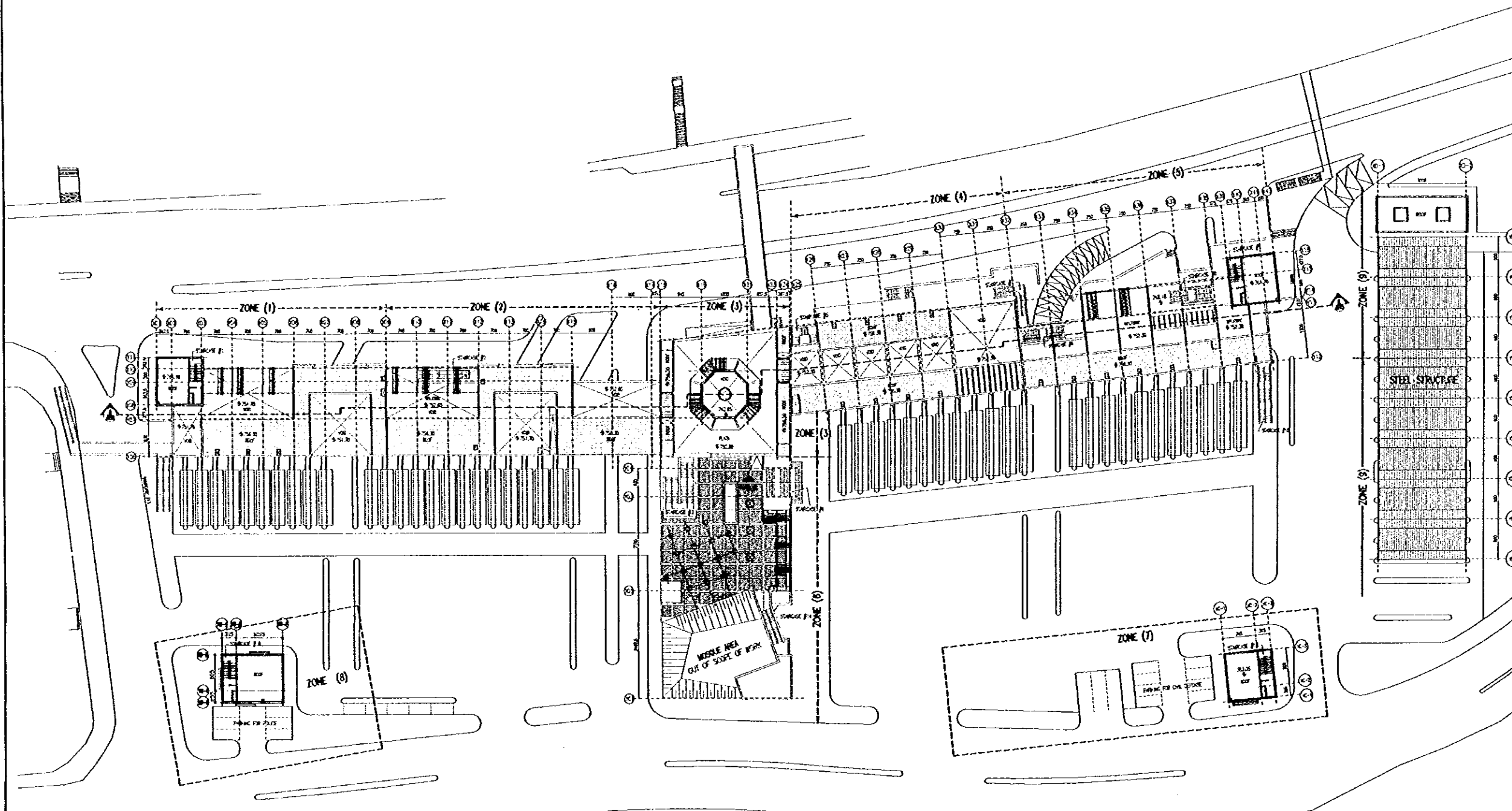
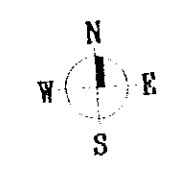


Designed by:
Japan International Cooperation Agency (JICA)
JICA Study Team:
Joint Venture of
Pacific Consultants International and
Yamasita Sekkel Inc.
Subcontracted Local Consultant:
TIBAH Consultants
Architects, Engineers

Raghadan Bus Terminal
Drawing Title:
FOURTH FLOOR PLAN

Scale: 1/500
Drawing No.: RBT . A106

Note:
• This detailed design has been executed by a team of consultants as shown below in accordance with the agreement between Japan International Cooperation Agency (JICA) and JICA Study Team.
• The copyright of this drawing rests with JICA.

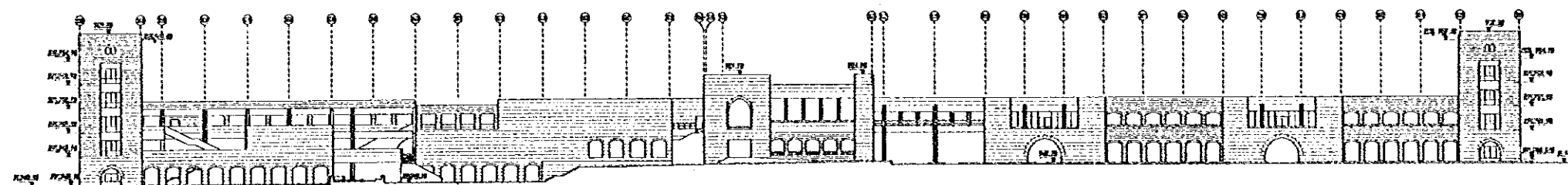


Designed by:
Japan International Cooperation Agency (JICA)
JICA Study Team:
Joint Venture of
Pacific Consultants International and
Yamasita Sekkei Inc.
Subcontracted Local Consultant:
TIBAH Consultants
Architects, Engineers

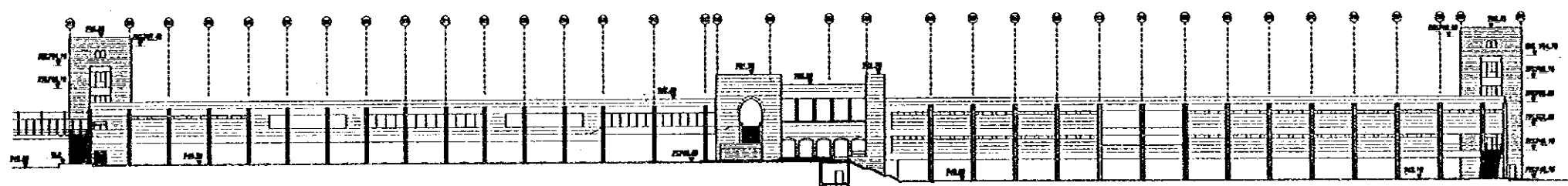
Raghadan Bus Terminal
Drawing Title:
FIFTH FLOOR PLAN

Scale:
1/500
Drawing No.:
RBT . A107

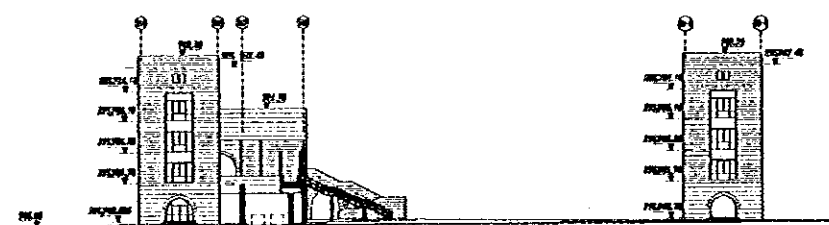
Note:
• This detailed design has been executed by a team of consultants as shown below in accordance with the agreement between Japan International Cooperation Agency (JICA) and JICA Study Team.
• The copyright of this drawing rests with JICA.



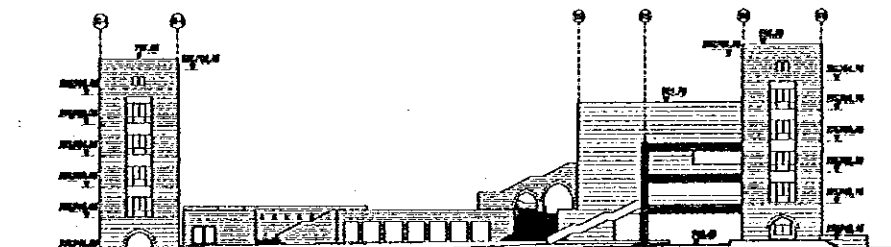
NORTH ELEVATION



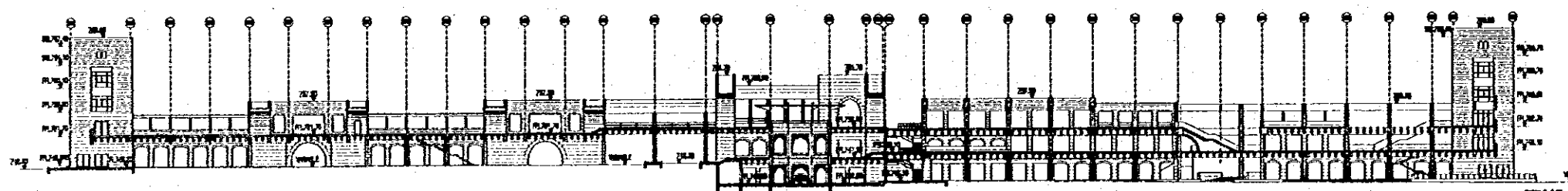
SOUTH ELEVATION



WEST ELEVATION



EAST ELEVATION



LONGITUDINAL SECTION (A-A)

Designed by:
Japan International Cooperation
Agency (JICA)

JICA Study Team:
Joint Venture of
Pacific Consultants International and
Yamasita Sekkel Inc.

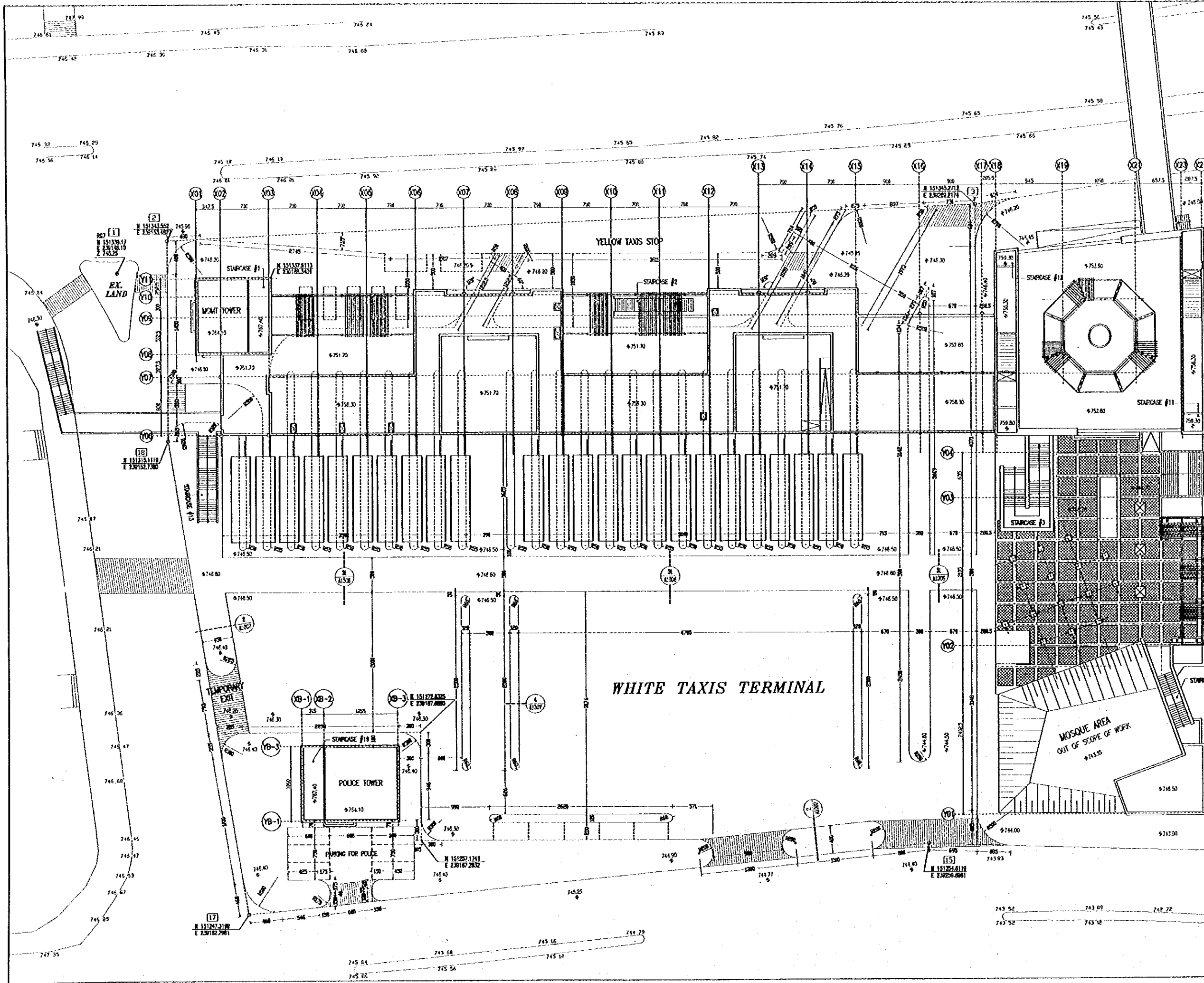
Subcontracted Local Consultant:
TIBAH Consultants
Architects, Engineers

Raghadan Bus Terminal

Drawing Title:
ELEVATIONS & SECTIONS

Scale:
1/500

Drawing No.:
RBT.A108

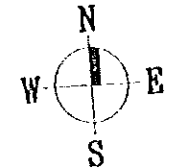


Tourism Sector Development Project
in the Hashemite Kingdom of Jordan

The Government of
the Hashemite Kingdom of Jordan
The Ministry of Tourism and Antiquities
The Ministry of Planning

Sub-Project:
Amman Downtown
Tourist Zone Development

Note:
• This detailed design has been executed by a team of
consultants as shown below in accordance with the agreement
between Japan International Cooperation Agency (JICA) and
JICA Study Team.
• The copyright of this drawing rests with JICA.



Designed by:
Japan International Cooperation Agency
(JICA)
JICA Study Team:
Joint Venture of
Pacific Consultant's International and
Yamato Sekel Inc.
Subcontracted Local Consultant:
IBAH Consultants
Architects, Engineers

Raghadon Bus Terminal
Drawing Title:
SITE PLAN
ZONE 1+2+8

Scale:
1/250
Drawing No.:
RBT. A201

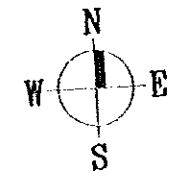


Tourism Sector Development Project
in the Hashemite Kingdom of Jordan

The Government of
the Hashemite Kingdom of Jordan
The Ministry of Tourism and Antiquities
The Ministry of Planning

Sub-Project:
Amman Downtown
Tourist Zone Development

Note:
• This detailed design has been executed by a team of consultants as shown below in accordance with the agreement between Japan International Cooperation Agency (JICA) and JICA Study Team.
• The copyright of the drawing rests with JICA.

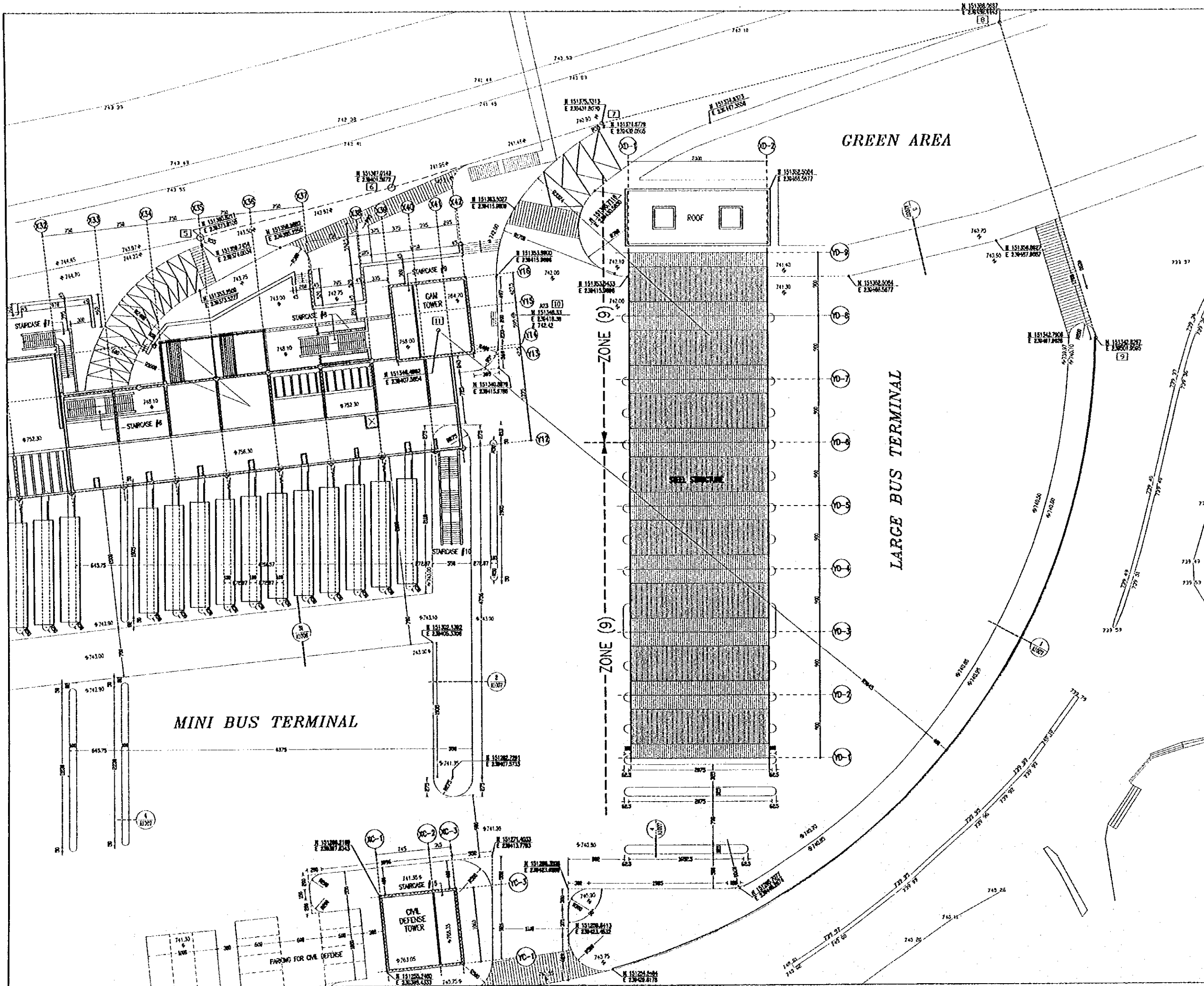


Designed by:
Japan International Cooperation Agency (JICA)
JICA Study Team:
Joint Venture of
Pacific Consultants International and
Yamashita Seidai Inc.
Subcontracted Local Consultant:
TMAH Consultant's
Architect, Engineers

Raghadan Bus Terminal

Drawing Title:
SITE PLAN
ZONE 3+4+5+6+7

Scale: 1/250
Drawing No: RBT. A202



Tourism Sector Development Project
in the Hashemite Kingdom of Jordan

The Government of
the Hashemite Kingdom of Jordan
The Ministry of Tourism and Antiquities
The Ministry of Planning

Sub-Project:
Amman Downtown
Tourist Zone Development

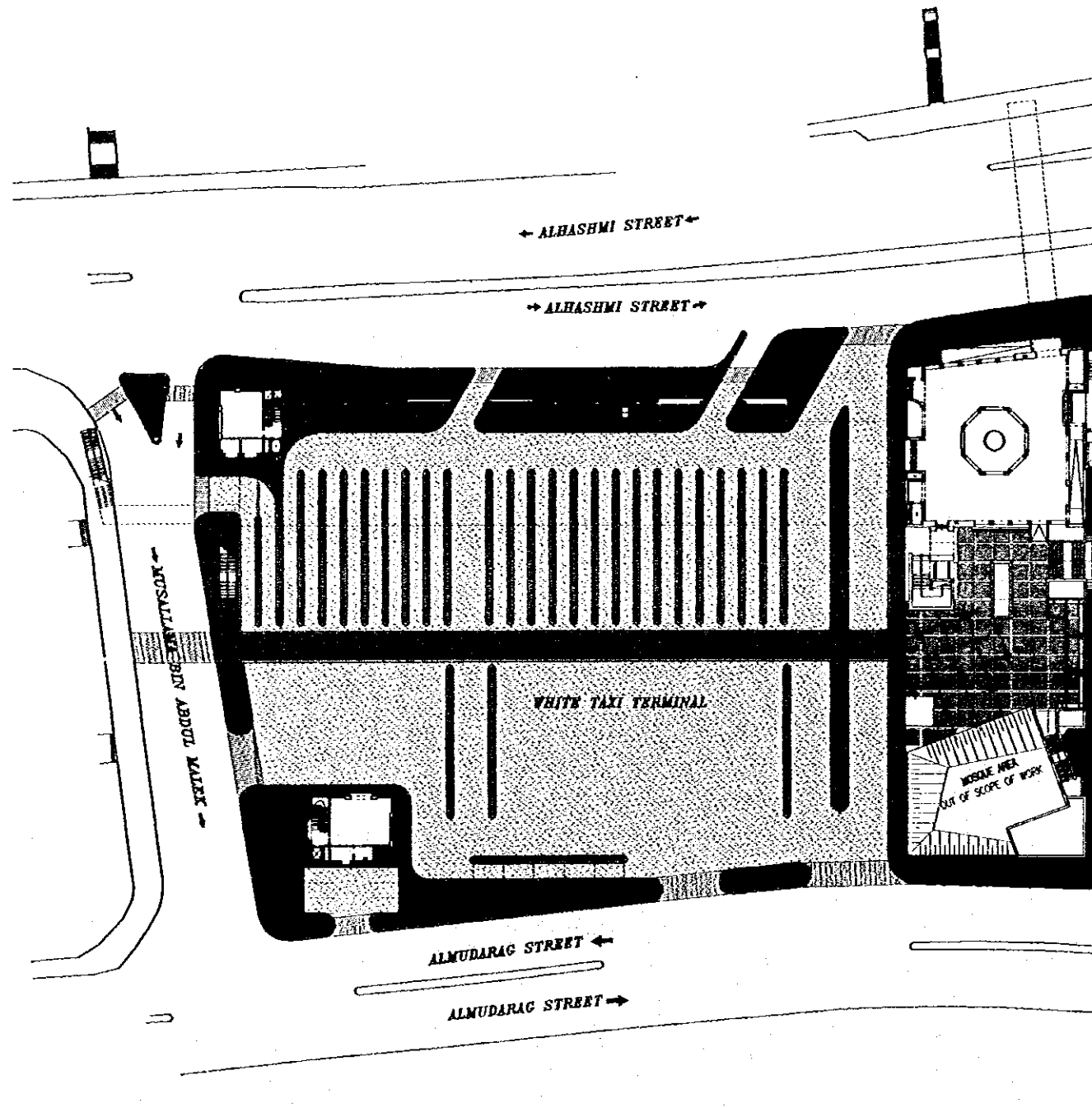
Note:
 • This detailed design has been executed by a team of consultants as shown below in accordance with the agreement between Japan International Cooperation Agency (JICA) and JICA Study Team.
 • The copyright of this drawing rests with JICA.

Designed by:
Japan International Cooperation Agency (JICA)
JICA Study Team:
Joint Venture of
Pacific Consultants International and
Yamashita Sekkei Inc.
Subcontracted Local Consultant:
TIBAH Consultants
Architects, Engineers

Raghadan Bus Terminal

Drawing Title:
SITE PLAN
ZONE 5+7+9+10

Scale: 1/250 Drawing No.: RBT. A203

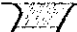


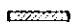


Tourism Sector Development Project
in the Hashemite Kingdom of Jordan

The Government of
the Hashemite Kingdom of Jordan
The Ministry of Tourism and Antiquities
The Ministry of Planning

Sub-Project:
Amman Downtown
Tourist Zone Development

Note:
• This detailed design has been executed by a team of consultants as shown below in accordance with the agreement between Japan International Cooperation Agency (JICA) and JICA Study Team.
• The copyright of this drawing rests with JICA.

-  ZEBRA
-  SIDEWALK
-  PAVEMENT
-  CURB

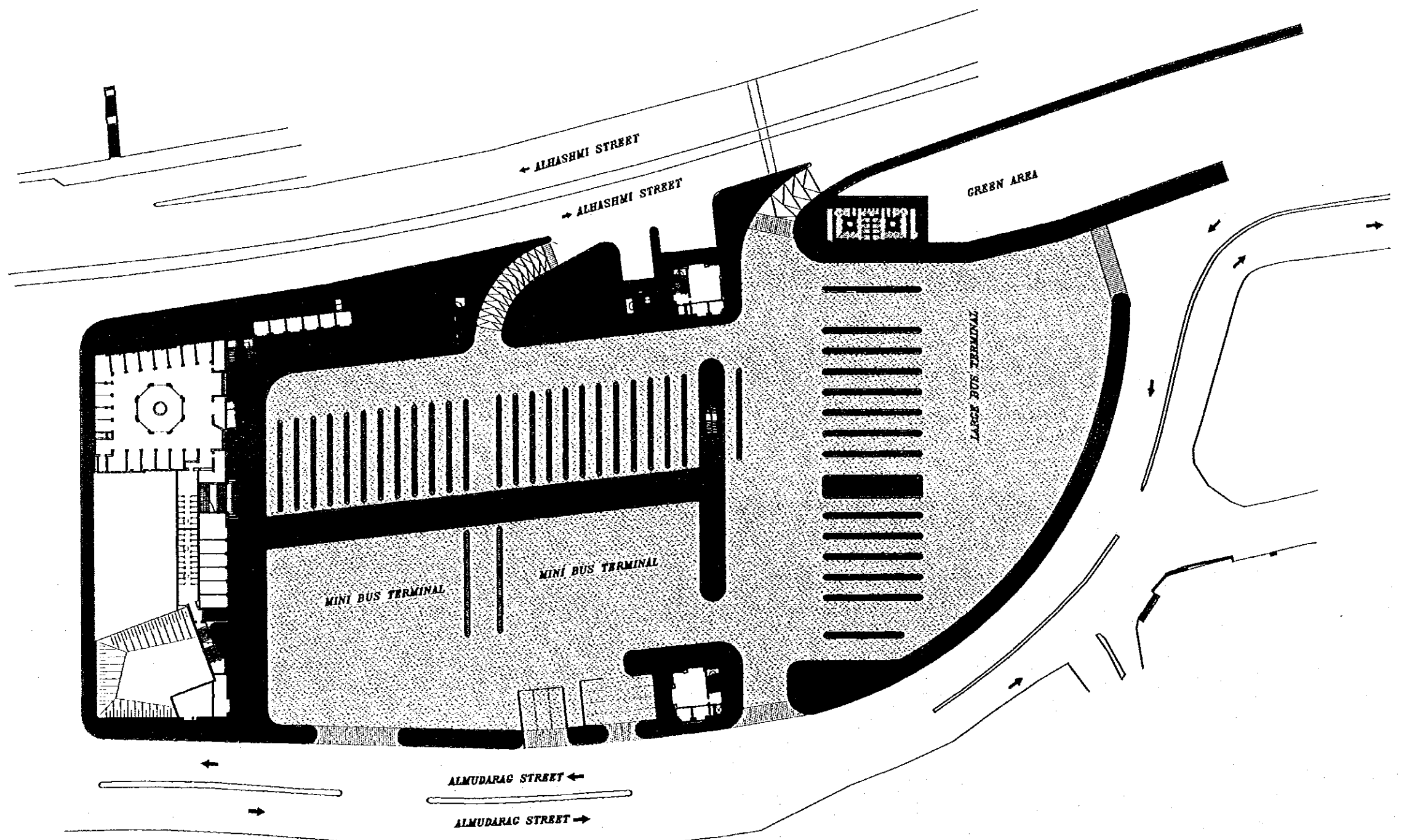
Designed by:
Japan International Cooperation Agency (JICA)
JICA Study Team:
Joint Venture of
Pacific Consultants International and
Yamasa Sekkei Inc.
Subcontracted Local Consultant:
TIBAH Consultants
Architects, Engineers

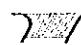





Raghadan Bus Terminal

Drawing Title:
SITE LEGEND PLAN (1)

Scale: 1/500
Drawing No.: RBT . A204

Note:
• This detailed design has been executed by a team of consultants as shown below in accordance with the agreement between Japan International Cooperation Agency (JICA) and JICA Study Team.
• The copyright of this drawing rests with JICA.

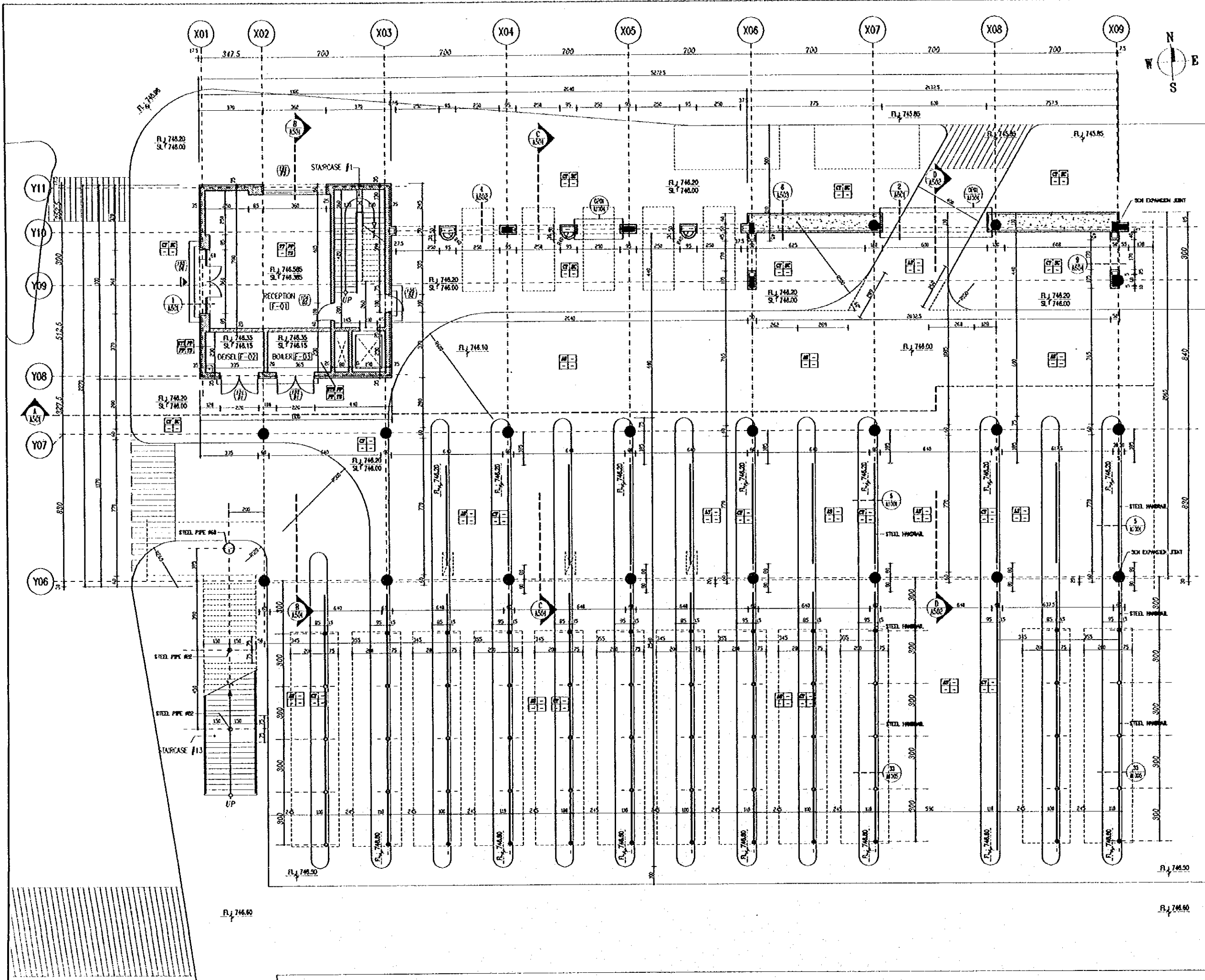


-  ZEBRA
-  SIDEWALK
-  PAVEMENT
-  CURB
-  RETAINING WALL

Designed by:
Japan International Cooperation Agency (JICA)
JICA Study Team:
Joint Venture of Pacific Consultants International and Yamatai Seikei Inc.
Subcontracted Local Consultant:
TIBAH Consultants Architects, Engineers


Raghadan Bus Terminal
Drawing Title:
SITE LEGEND PLAN (2)

Scale: 1/500 Drawing No: RBT . A205



Tourism Sector Development Project
in the Hashemite Kingdom of Jordan

The Government of
the Hashemite Kingdom of Jordan
The Ministry of Tourism and Antiquities
The Ministry of Planning

Sub-Project:
Amman Downtown
Tourist Zone Development

No/te:
• The detailed design has been executed by a team of
consultants as shown below in accordance with the agreement
between Japan International Cooperation Agency (JICA) and
JICA Study Team.
• The copyright of this drawing rests with JICA.

FINISHES LEGEND

FLOOR FINISH

MT : MARBLE TILES
 TT : TERRAZZO TILES
 CRT : CERAMIC TILES
 EPT : EPOXY ON TERRAZZO TILE
 MP : METALL PLATE
 CT : CEMENT TILE
 ST : STONE TILE
 AS : ASPHALT LAYER

WALL FINISH

SC : STONE CLADDING
 PCB : PAINT ON GYPSUM BOARD
 PP : PLASTER & PAINT
 P : PLASTER ONLY
 PT : PAINT ONLY
 CRT : CERAMIC TILES

CILING FINISH

PCB : PAINT ON GYPSUM BOARD
 PP : PLASTER & PAINT
 P : PLASTER ONLY
 PT : PAINT ONLY
 MP : METALL PLATE

SKIRTING

MT : MARBLE SKIRTING
 TS : TERRAZZO SKIRTING
 SS : STONE SKIRTING

Designed by:
Japan International Cooperation Agency
(JICA)
JICA Study Team:
Joint Venture of
Pacific Consultants International and
Yamashita Seltai Inc.
Subcontracted Local Consultant:
TMAH Consultants
Architects, Engineers

Raghadan Bus Terminal

Drawing Title:
**FIRST FLOOR PLAN
ZONE 1**

Scale:
1/100

Drawing No:
RBT.A-301