

JAPAN INTERNATIONAL COOPERATION AGENCY

THE GOVERNMENT OF
THE HASHEMITE KINGDOM OF JORDAN
THE MINISTRY OF TOURISM AND ANTIQUITIES
THE MINISTRY OF PLANNING

DRAFT
PREQUALIFICATION DOCUMENT
FOR
CONSTRUCTION
OF
DEAD SEA PARKWAY SUB-PROJECT
THE TOURISM SECTOR DEVELOPMENT PROJECT

August 2000

Pacific Consultants International
Yamashita Sekkei Inc.

DEAD SEA PARKWAY SUB-PROJECT

TABLE OF CONTENTS

Volume 4PQ

- INSTRUCTIONS TO APPLICANTS
- APPLICATION FOR PRE-QUALIFICATION
AS A TENDER
- PRE-QUALIFICATION APPLICANT FORM

THE GOVERNMENT OF
THE HASHEMITE KINGDOM OF JORDAN
THE MINISTRY OF TOURISM & ANTIQUITIES
THE MINISTRY OF PLANNING

INSTRUCTIONS TO APPLICANT

DEAD SEA PARKWAY SUB-PROJECT
THE TOURISM SECTOR DEVELOPMENT PROJECT

TABLE OF CONTENTS

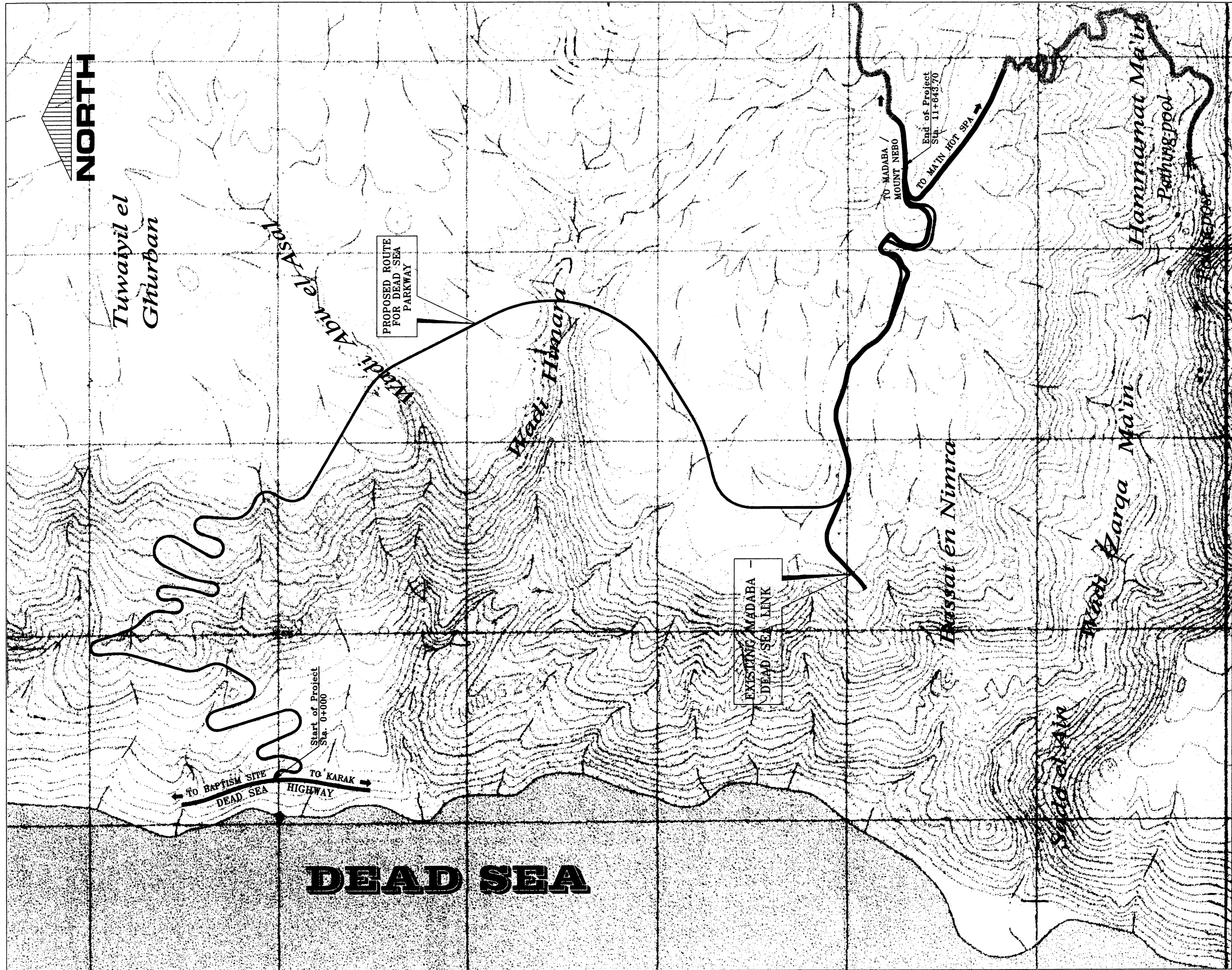
<u>PART 1:</u>	<u>INTRODUCTION</u>
	1.1 Scope of Prequalification
	1.2 Objective
	1.3 Definitions and abbreviations
	1.4 Prequalification for Construction Work of DEAD SEA PARKWAY SUB-PROJECT
	1.5 Eligibility of Applicants
<u>PART 2:</u>	<u>PROJECT DEFINITION</u>
	2.1 Site Location and Description of Site
	2.2 General Description of the Project
	2.3 Site Information
	2.4 Project Schedule
	2.5 General Contractual Requirements
<u>PART 3:</u>	<u>INSTRUCTION AND GENERAL CONDITIONS</u>
	3.1 Completion of Prequalification Forms
	3.2 Consortium, Joint Ventures and Partnership
	3.3 Named Contractors, Manufacturers and Suppliers
	3.4 General Instructions
	3.5 Forms
	3.6 Basis of Evaluation
	3.7 Rights to be reserved
	3.8 Litigation History
<u>PART 4:</u>	<u>CONSTRUCTION WORKS AND LOCAL PROCUREMENT</u>
	4.1 Information to be provided
<u>APPENDIX</u>	
Appendix 1:	Project Outline
Appendix 2:	Location of Confirmation Boring for Geographical Investigation
Appendix 3:	Site Investigation Report

TO BE COMPLETED AND RETURNED

Application for Prequalification as a Tenderer

Prequalification Application Form

APPENDIX 1



Project: Tourism Sector Development Project in the Hashemite Kingdom of Jordan	
Executing Agency: The Ministry of Tourism and Antiquities The Ministry of Planning	
SUB-PROJECT: Dead Sea Parkway	
Note: This detailed design has been executed by a team of consultants as shown below in accordance with the agreement between Japan International Cooperation Agency (JICA) and JICA Study Team. The copyright of this drawing rests with JICA.	
Designed by: Japan International Cooperation Agency (JICA)	
JICA Study Team: Joint Venture of Pacific Consultants International and Yamasita Sekkel Inc.	
Subcontracted Local Consultant:  consolidated consultants engineering & environment Tel. 4812377 - Fax. 4812365 - AMMAN - JORDAN	
Drawing Title: KEY LOCATION PLAN	
Scale: NOT TO SCALE	Drawing No.: DSPW-03

APPENDIX 2

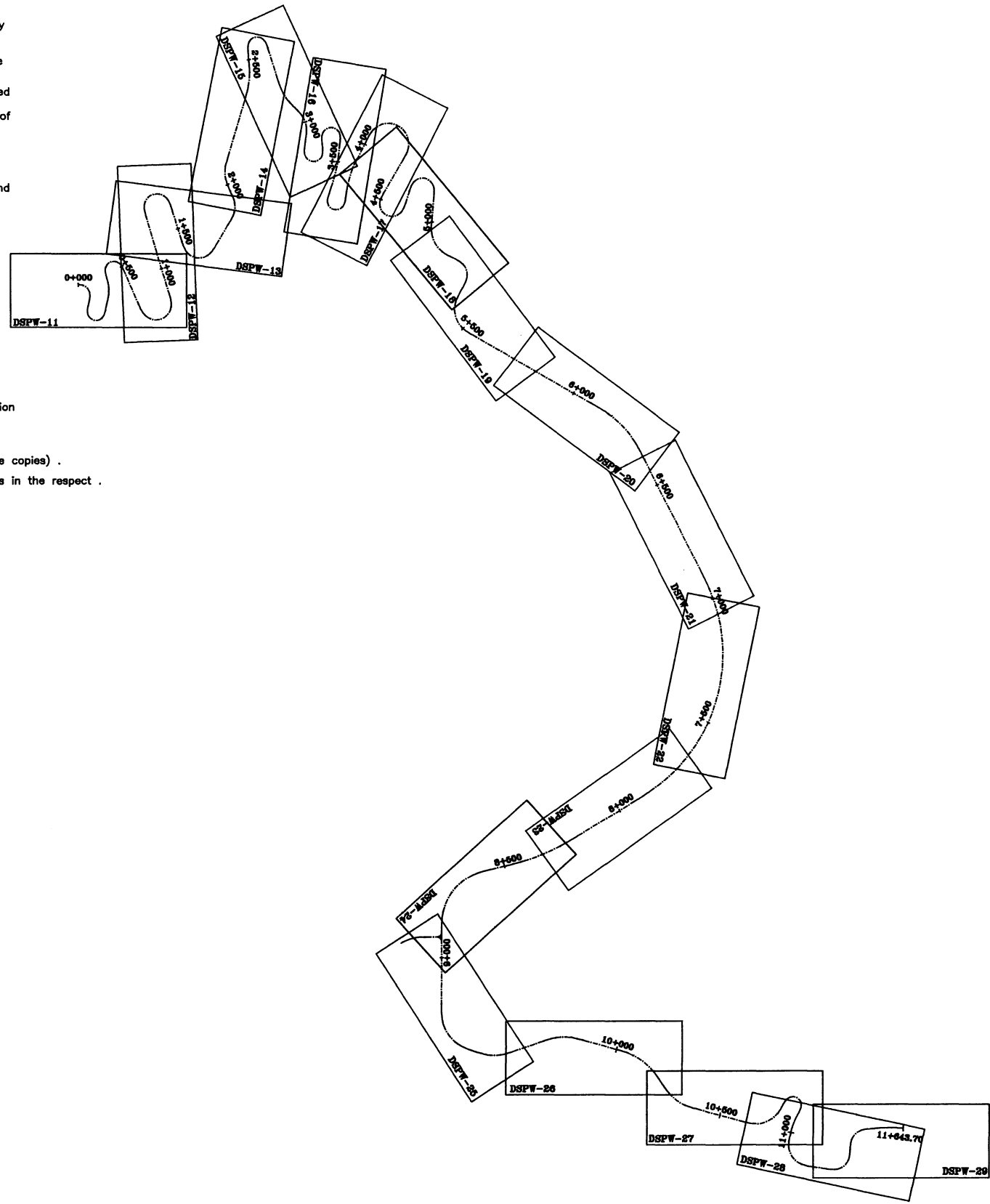
IMPORTANT GEOTECHNICAL NOTES :-

- 1) The contractor and at his own expense must carry out full geological, geotechnical and seismic investigations to fully satisfy himself of the nature of the soil conditions for the first 5.5Km of the project in addition to the required locations at wadi ABU EL-ASAL & wadi HIMARA bridges and any other required locations subject to the approval of the engineer . The contractor must submit well in advance of starting any construction work his work plans for the geotechnical investigation incorporated within his construction work plans.
- 2) The contractor and through his first graded geotechnical consulting company must submit drawings showing proposed locations and depths of bore holes, test pits, seismic layout, ...etc. in addition to his methodology of work to the approval of the engineer . following are the proposed locations of bore holes that represent the minimum number of of bore holes to be drilled within the alignment unless otherwise instructed by the engineer:
stations [0+492, 1+030, 1+700, 1+970, 2+155, 2+230, 2+370, 2+500, 2+800, 3+225, 3+290, 3+550, 3+600, 3+940, 4+025, 4+200, 4+700, 4+850, in addition to bore holes at bridges & other structures]
- 3) The soil investigation must include but not be limited to :-
 - a) Drilling the required and approved no. of bore holes to the required depths to determine the nature, type and properties of the materials in addition to the depth and fluctuation of the water level along the route .
 - b) The approved and required no. of test pits .
 - c) Perform all required laboratory testing to the approval of the engineer to determine the physical and mechanical properties of the material along the route according to ASTM and/or B.S standards .
 - d) Seismic analysis and testing .
 - e) Analysis of all field and laboratory investigations in order to determine and evaluate the properties of the materials and determine the factors which contribute to the erosion of side slopes and potential global problems .
 - f) Perform slope stability analysis wherever required to determine the safe cut and fill slopes and optimum and most economical protection measures for both cut and fill sections .
 - g) verify the bearing capacity assumed in the design for bridges, retaining walls and any other structures .
The contractor should also adjust the design of bridge sub-structure and retaining walls to the approval of the engineer if the results vary from the values assumed in the design .
- 4) All the above must be carried out in full coordination and to the approval of the engineer .
- 5) The contractor will not be paid or given extension of time to do all the above even if the results of the investigation urged the need of re-alignment of the route, revision of the proposed cut & fill slopes and the revision and/or addition of protection measures . The redesign for all above elements (if required) should be carried out by the contractor and shown on his shopdrawings to the approval of the engineer .
- 6) The contractor should submit the results of the above investigation, analysis and verification in a formal report (five copies) .
- 7) The contractor shall bear the risk of any error which might appear in the soil information and can't claim damages in the respect .

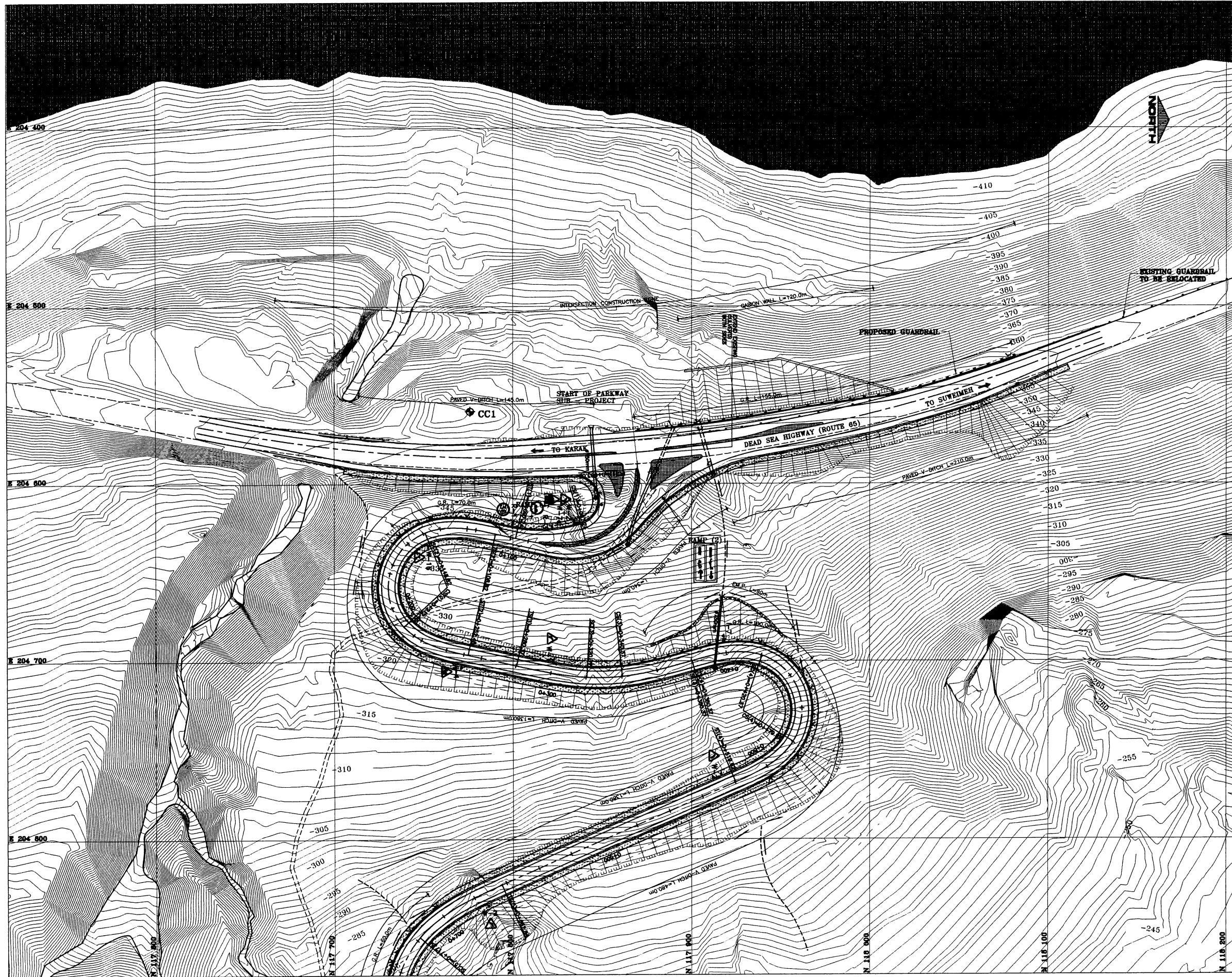
GENERAL NOTES :-

- 1) Contractor immediately on award of contract must :
 - a- Locate and concrete all survey points (Bench Marks, Reference Points, Pls...etc) and set out the centerline and stations accordingly .
 - b- Take levels of natural ground and existing asphalt and submit to the engineer bringing to his attention any discrepancy from those shown on drawings .
 - c- Prepare shop-drawings for all works and propose solutions for all discrepancies from design drawings . These drawings must be submitted to the engineer, giving him sufficient time to study and review .
- 2) The engineer will study the above mentioned drawings and will have to approve / or ask to be revised before commencement of any work .
- 3) The contractor is to allow for all the above in his unit rates as no extension of time and / or extra payments will be considered .
- 4) The contractor shall read the drawings in conjunction with all other contract documents.
- 5) Field adjustments in alignment, grades and location of drainage structures may be made by the engineers representative so as to best fit localized conditions .
- 6) Quantities shown in the bills of quantities are approximate. payment for completed and accepted work shall be on the basis of field measured quantities as stated in the specifications.
- 7) Quantities shown represent the true original in-place volume of materials to be excavated and true compacted volumes of embankments .
- 8) The contractor's attention is directed to the provisions of the conditions of contract concerning utility lines and setting out .
- 9) All coordinates are based on the Palestine grid.
- 10) The contractor to submit a detailed survey showing the exact locations and heights of the retaining walls subjected to the approval of the engineer.
- 11) The exact locations of guardrails and pedestrian railing are to be determined on site by the engineer.
- 12) Slope protection locations mentioned in the drawings are approximate. it is the responsibility of the engineer to define the final locations and heights to best suit site conditions.
- 13) The contractor must and at his own expense prepare as built drawings and submit to the engineer. He must point out any alterations for corrections required if so instructed. No separate payment will be made. Cost deemed to be included in his unit bid prices. above includes final x-sections to a scale agreeable to the engineer .
- 14) No work will be allowed prior to placing all the required temporary signs, traffic lights, flag men, etc, wherever and whenever required. No separate payment will be made. Cost deemed to be included in unit bid price .
- 15) Contractor to allow in his unit rates for the construction and maintenance of all required diversions and should note the penalty which will be imposed if diversions are not constantly and properly maintained to the satisfaction of the engineer's representative .
- 16) The contractor must submit well in advance of any work detailed plans showing proposed detours and diversions. Traffic in both directions must be allowed to flow at all times. Contractor must obtain engineer's and police permission prior to starting constructing and diversion.
- 17) Contractor to liaison and cooperate with all utility departments in locating existing utility lines, cables, manholes and poles etc. Any damage due to any reason is the responsibility of the contractor and he must immediately correct and bear all cost .
- 18) Contractor must immediately on being awarded the project, contact all authorities concerned - the electricity authorities, the water authorities etc. And make sure of the location and depth of all utility ducts, cables, pipes etc. Contractor shall either relocate any that would interfere with his work, especially the relocation of the overhead and underground electric cables and posts or arrange for relocation to be done by the respective authorities, all to the approval of the engineer and the authorities concerned .
- 19) Box culvert dimensions shown on drawings are as follows : 4 (3 x 2)

no. of cells	_____
height of each cell	_____
span of culvert	_____
- 20) Only paved ditches are shown on the plan profile drawings.
all other ditches are shown on relevant cross - sections

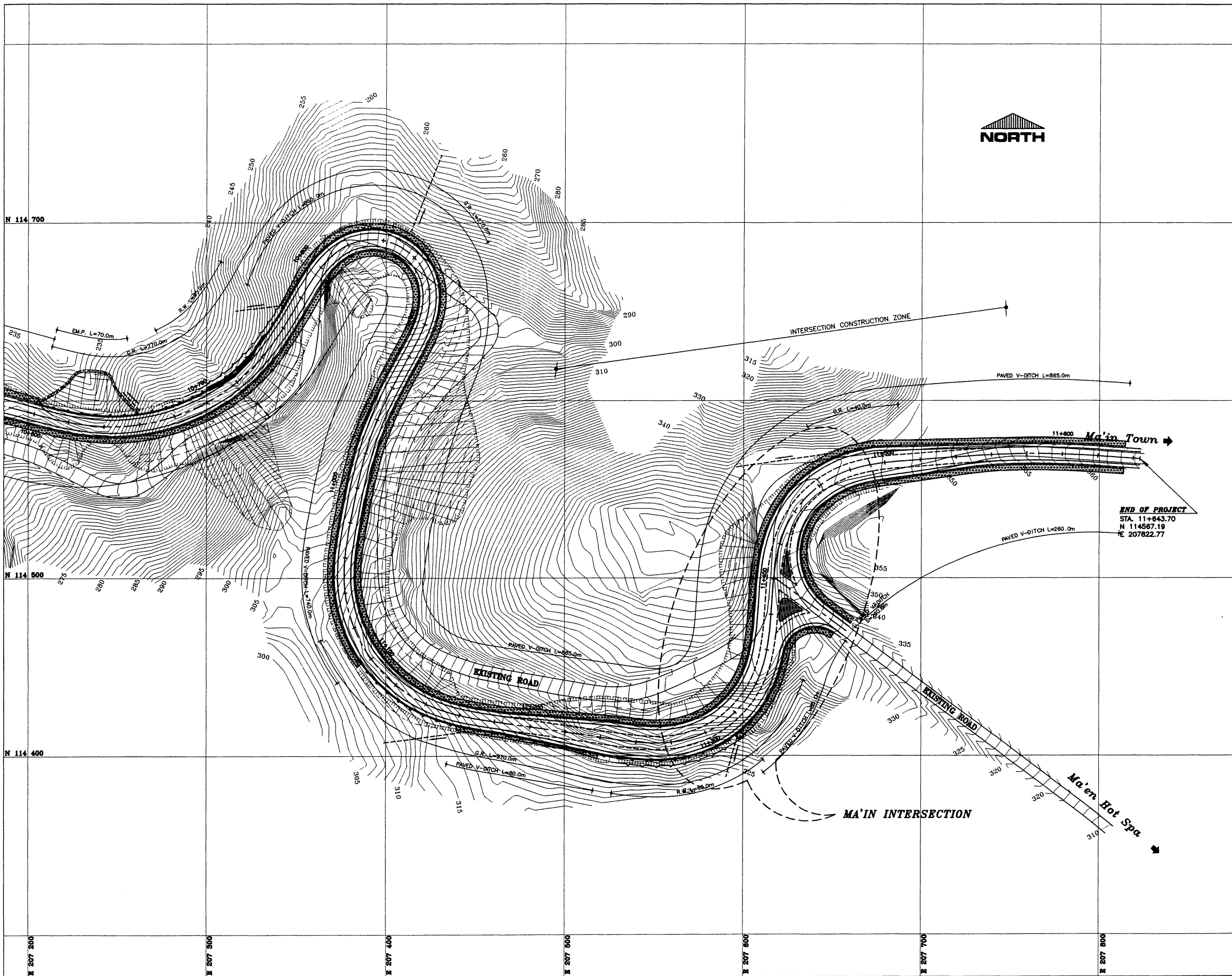


Project: Tourism Sector Development Project in the Hashemite Kingdom of Jordan	
Executing Agency: The Ministry of Tourism and Antiquities The Ministry of Planning	
SUB-PROJECT: Dead Sea Parkway	
Note: This detailed design has been executed by a team of consultants as shown below in accordance with the agreement between Japan International Cooperation Agency (JICA) and JICA Study Team. The copyright of this drawing rests with JICA.	
Designed by: Japan International Cooperation Agency (JICA)	
JICA Study Team: Joint Venture of Pacific Consultants International and Yamasita Sekkel Inc.	
Subcontracted Local Consultant: consolidated consultants engineering & environment Tel: 4612377 - Fax: 4612380 - AMMAN - JORDAN	
Drawing Title: KEY PLAN	
Scale: NOT TO SCALE	Drawing No.: DSPW-10



- NOTES :-**
- 1) For geometric, marking & signing details of intersection & profiles of ramps see drawings No. DSPW-36 TO DSPW-38
 - 2) All dimensions are in meters unless otherwise indicated.

Project: Tourism Sector Development Project in the Hashemite Kingdom of Jordan	
Executing Agency: The Ministry of Tourism and Antiquities The Ministry of Planning	
SUB-PROJECT: Dead Sea Parkway	
Note: This detailed design has been executed by a team of consultants as shown below in accordance with the agreement between Japan International Cooperation Agency (JICA) and JICA Study Team. The copyright of this drawing rests with JICA.	
Designed by: Japan International Cooperation Agency (JICA)	
JICA Study Team: Joint Venture of Pacific Consultants International and Yamasita Sekkei Inc.	
Subcontracted Local Consultant:  Tel: 9612377 - Fax: 9612380 - AMMAN - JORDAN	
Drawing Title: DEAD SEA INTERSECTION GENERAL PLAN	
Scale: 1:1000	Drawing No.: DSPW-35



NOTES :-
 1) For geometric, marking & signing details of intersection & profiles of ramps see drawings No. DSPW-41 TO DSPW-43
 2) All dimensions are in meters unless otherwise indicated.

Project:
 Tourism Sector Development Project
 in the Hashemite Kingdom of Jordan


Executing Agency:
 The Ministry of Tourism and Antiquities
 The Ministry of Planning

SUB-PROJECT:
 Dead Sea Parkway

Note:
 This detailed design has been executed by a team of consultants as shown below in accordance with the agreement between Japan International Cooperation Agency (JICA) and JICA Study Team. The copyright of this drawing rests with JICA.

Designed by:
 Japan International Cooperation Agency (JICA)

JICA Study Team:
 Joint Venture of Pacific Consultants International and Yamasita Sekkei Inc.

Subcontracted Local Consultant:

 Tel: 4812377 - Fax: 4812380 - AMMAN - JORDAN

Drawing Title:
 MA'IN INTERSECTION
 GENERAL PLAN

Scale: 1:1000
Drawing No.: DSPW-40



NOTE :-
 1) FOR DETAILS OF GEOMETRIC DESIGN, MARKING
 SIGNING, LANDSCAPING AND PROFILES SEE
 DRAWINGS No:- DSPW - 46 TO DSPW - 50

Project:
 Tourism Sector Development Project
 in the Hashemite Kingdom of Jordan


Executing Agency:
 The Ministry of Tourism and Antiquities
 The Ministry of Planning

SUB-PROJECT:
 Dead Sea Parkway

Note:
 This detailed design has been executed by
 a team of consultants as shown below in
 accordance with the agreement between
 Japan International Cooperation Agency
 (JICA) and JICA Study Team.
 The copyright of this drawing rests with JICA.

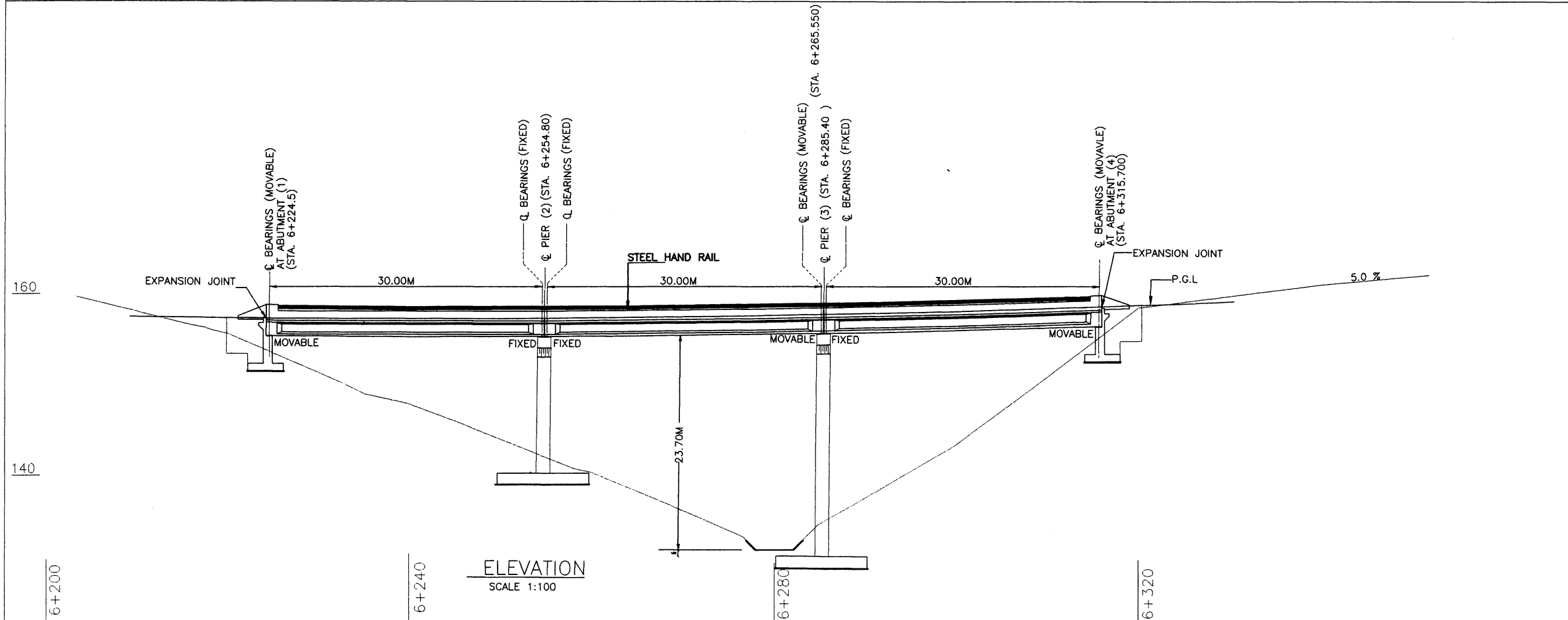
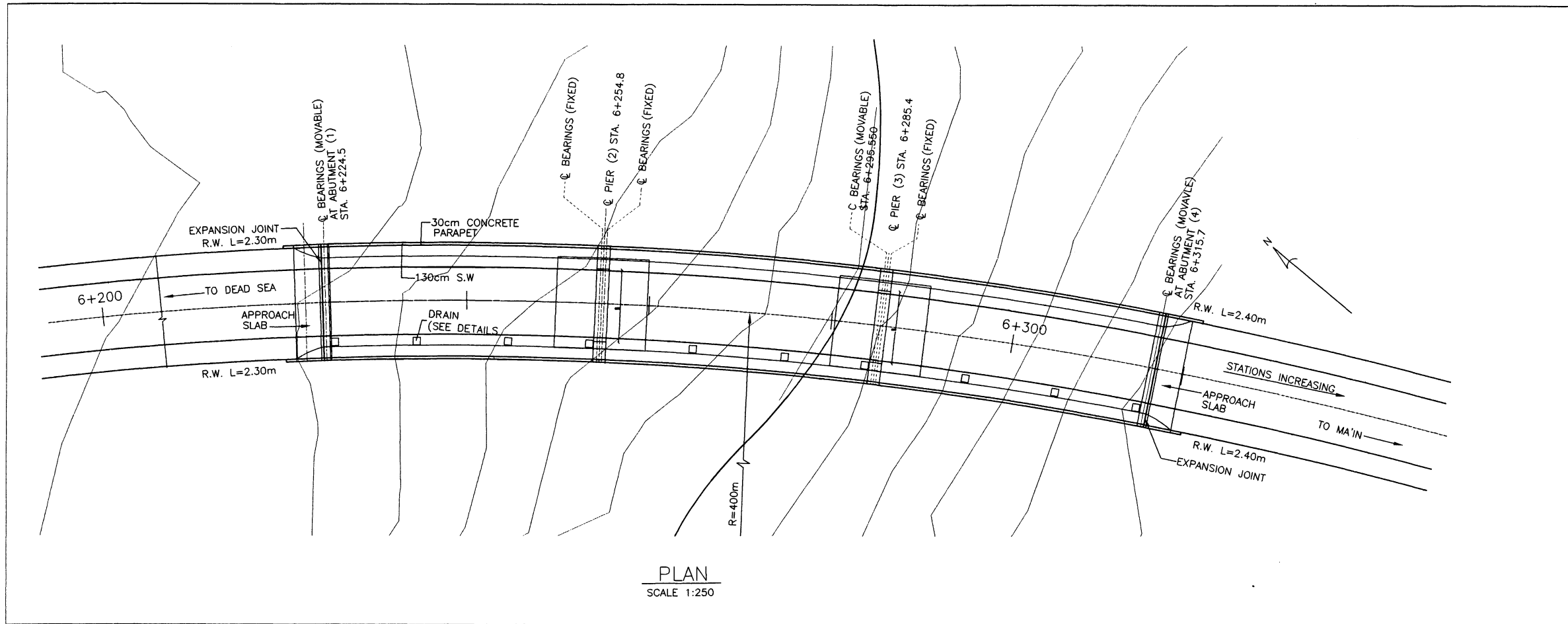
Designed by:
 Japan International Cooperation
 Agency (JICA)

JICA Study Team:
 Joint Venture of
 Pacific Consultants International and
 Yamasita Sekkal Inc.

Subcontracted Local Consultant:
 **consolidated consultants**
 engineering & environment
 Tel: 4612377 - Fax: 4612366 - AMMAN - JORDAN

Drawing Title:
**PARKWAY FACILITY
 (GENERAL PLAN)**

Scale: 1:1000 **Drawing No.:** DSPW-45



Project:
Tourism Sector Development Project
in the Hashemite Kingdom of Jordan

Executing Agency:
The Ministry of Tourism and Antiquities
The Ministry of Planning

SUB-PROJECT:
Dead Sea Parkway

Note:
This detailed design has been executed by a team of consultants as shown below in accordance with the agreement between Japan International Cooperation Agency (JICA) and JICA Study Team. The copyright of this drawing rests with JICA.

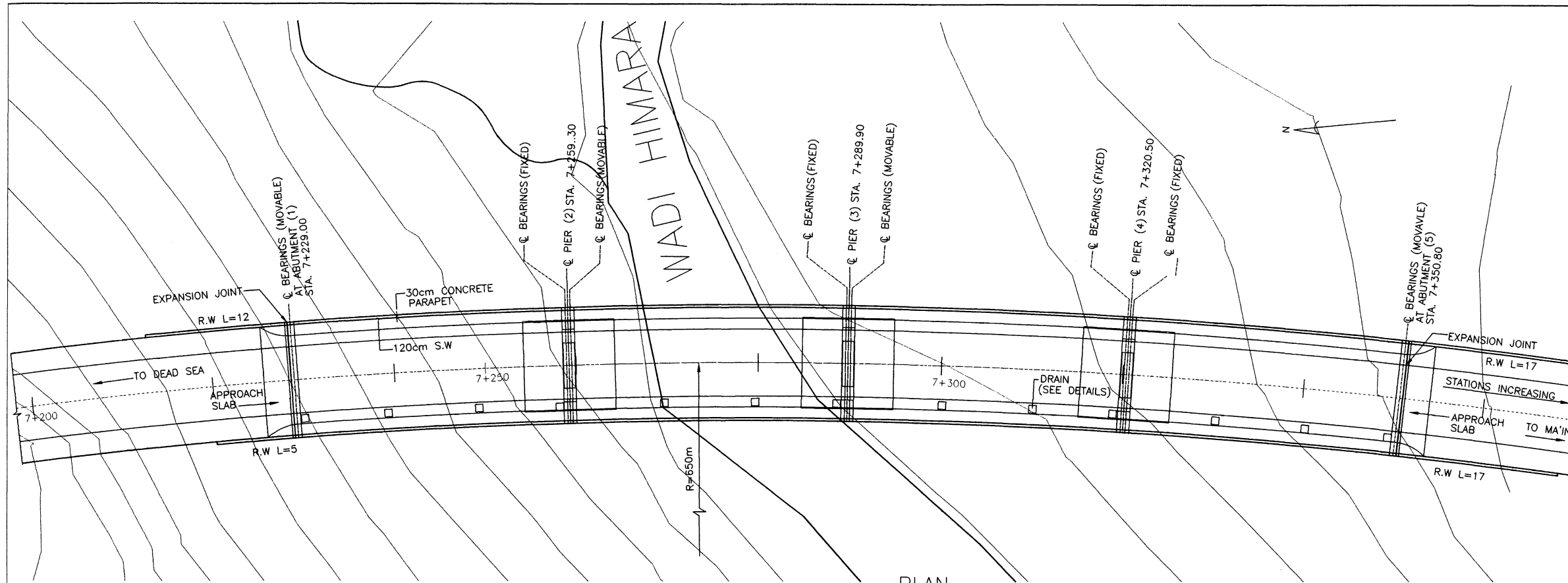
Designed by:
Japan International Cooperation Agency (JICA)

JICA Study Team:
Joint Venture of
Pacific Consultants International and
Yamasita Sekkel inc.

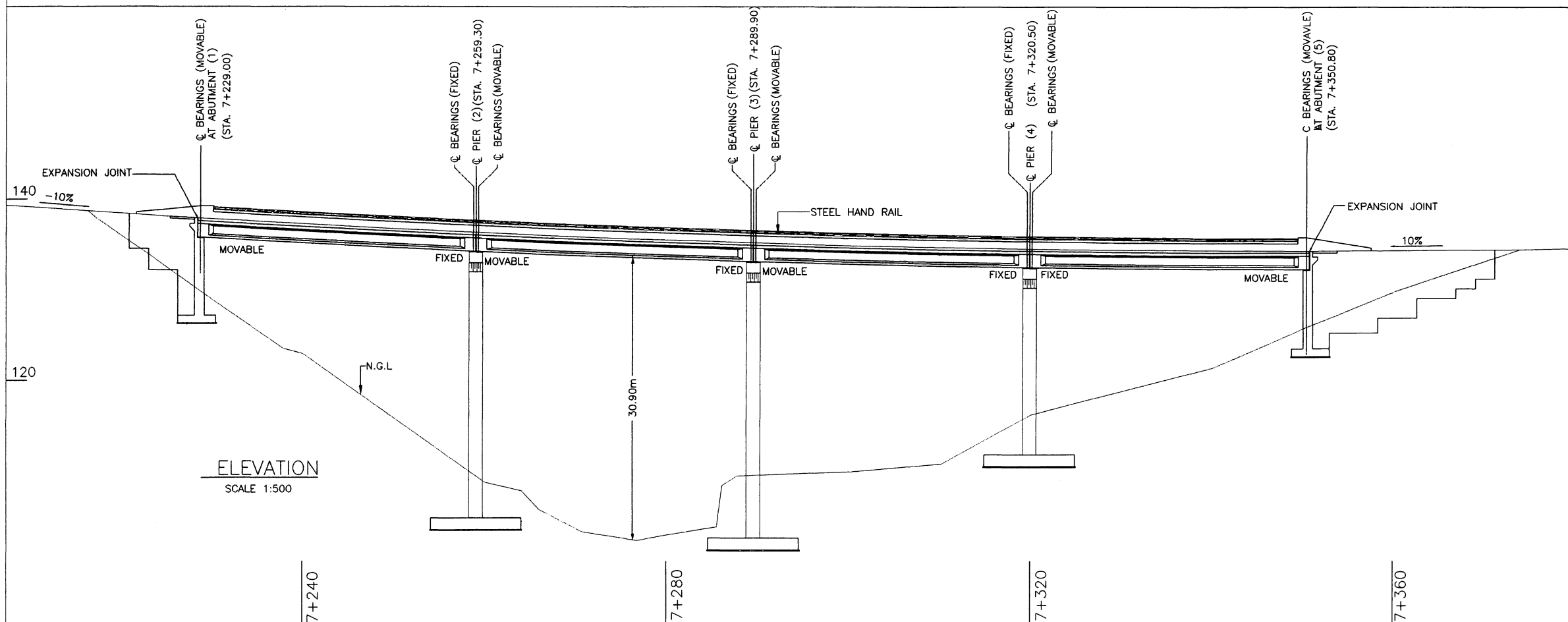
Subcontracted Local Consultant:
consolidated consultants
Engineering & Environment
Tel: 4612377 - Fax: 4612380 - AMMAN - JORDAN

Drawing Title:
WADI ABU EL-ASAL BRIDGE
GENERAL PLAN & ELEVATION

Scale: 1:250 **Drawing No.:** DSPW-70



PLAN
SCALE 1:500



ELEVATION
SCALE 1:500

Project:
Tourism Sector Development Project
in the Hashemite Kingdom of Jordan

Executing Agency:
The Ministry of Tourism and Antiquities
The Ministry of Planning

SUB-PROJECT:
Dead Sea Parkway

Note:
This detailed design has been executed by
a team of consultants as shown below in
accordance with the agreement between
Japan International Cooperation Agency
(JICA) and JICA Study Team.
The copyright of this drawing rests with JICA.

Designed by:
Japan International Cooperation
Agency (JICA)

JICA Study Team:
Joint Venture of
Pacific Consultants International and
Yamasita Sekkei Inc.

Subcontracted Local Consultant:
consolidated consultants
engineering & environment
Tel: 4612377 - Fax: 4612360 - AMMAN - JORDAN

Drawing Title:
WADI HIMARA BRIDGE
GENERAL PLAN & ELEVATION

Scale: 1:250 **Drawing No.:** DSPW-80

WARNING SIGNS			WARNING SIGNS			REGULATORY SIGNS			REGULATORY SIGNS			MANDATORY SIGNS			INFORMATIVE SIGNS																	
SIGN TYPE	STATION	LOCATION	SIGN TYPE	STATION	LOCATION	SIGN TYPE	STATION	LOCATION	SIGN TYPE	STATION	LOCATION	SIGN TYPE	STATION	LOCATION	SIGN TYPE	STATION	LOCATION															
W-1	0+300	L.H.S	W-5b	2+320 TO 2+540 (EACH 20m.)	L.H.S	REGULATORY SIGNS	R-1	11+520	L.H.S	MANDATORY SIGNS	REGULATORY SIGNS	R-2	5+540	R.H.S	INFORMATIVE SIGNS	I-1	DEAD SEA INTERSECTION	SEE NOTE (1)														
	1+025	L.H.S		2+610 TO 2+630 (EACH 20m.)	L.H.S		R-2	6+600	R.H.S			I-2	DEAD SEA INTERSECTION	SEE NOTE (1)																		
	1+050	R.H.S		2+720 TO 2+840 (EACH 20m.)	R.H.S		R-3	8+400	L.H.S			I-3	DEAD SEA INTERSECTION	SEE NOTE (1)																		
	1+850	L.H.S		2+820 TO 2+860 (EACH 20m.)	L.H.S		R-3	9+400	L.H.S			I-4	DEAD SEA INTERSECTION	SEE NOTE (1)																		
	3+900	R.H.S		2+920 TO 3+080 (EACH 20m.)	R.H.S		R-3	10+540	L.H.S			I-5	DEAD SEA INTERSECTION	SEE NOTE (1)																		
	3+925	L.H.S		3+540 TO 3+640 (EACH 20m.)	R.H.S		R-3	0+075	R.H.S			I-6	DEAD SEA INTERSECTION	SEE NOTE (1)																		
	5+225	L.H.S		3+780 TO 3+880 (EACH 20m.)	L.H.S		R-3	2+100	L.H.S			I-7	0+400	L.H.S																		
	9+025	L.H.S		5+160 TO 5+200 (EACH 20m.)	R.H.S		R-3	2+500	R.H.S			I-8	5+500	R.H.S																		
	9+570	R.H.S		7+420 TO 7+440 (EACH 20m.)	R.H.S		R-3	6+350	L.H.S			I-9	PARKWAY FACILITY	RAMP (A)																		
	9+700	L.H.S		7+440 TO 7+520 (EACH 20m.)	BOTH SIDE		R-3	7+200	R.H.S			I-9	PARKWAY FACILITY	RAMP (B)																		
11+240	L.H.S	8+500 TO 8+530 (EACH 20m.)	BOTH SIDE	R-3	7+400	L.H.S	I-10	PARKWAY FACILITY	RAMP (A)																							
11+380	L.H.S	8+940 TO 9+000 (EACH 20m.)	BOTH SIDE	R-3	10+590	R.H.S	I-10	PARKWAY FACILITY	RAMP (B)																							
W-2	0+060	R.H.S	9+000 TO 9+060 (EACH 20m.)	R.H.S	R-4	11+520	L.H.S	I-11	6+125	L.H.S	INFORMATIVE SIGNS	I-11	6+125	L.H.S	MANDATORY SIGNS	M-1	DEAD SEA INTERSECTION	SEE NOTE (1) [2.0 No.]														
	0+525	R.H.S	9+180 TO 9+260 (EACH 20m.)	BOTH SIDE	R-4	2+100	R.H.S	I-12	8+500	R.H.S		M-1	PARKWAY FACILITY	RAMP (A)																		
	0+675	L.H.S	9+260 TO 9+400 (EACH 20m.)	L.H.S	R-4	2+500	L.H.S	I-13	8+900	R.H.S		M-1	PARKWAY FACILITY	RAMP (B)																		
	1+400	R.H.S	DEAD SEE INTERSECTION		R-4	6+350	R.H.S	I-14	8+920	L.H.S		M-1	MA'IN INTERSECTION	SEE NOTE (1) [2.0 No.]																		
	1+550	L.H.S	WADI Abu AL-Asal BRIDGE	BOTH SIDES	R-4	7+200	L.H.S	I-15	8+920	L.H.S		M-2	DEAD SEA INTERSECTION	SEE NOTE (1) [1.0 No.]																		
	3+450	R.H.S	WADI Himara BRIDGE	BOTH SIDES	R-4	7+400	L.H.S	I-16	9+150	R.H.S		M-2	PARKWAY FACILITY	RAMP (A)																		
	4+425	L.H.S	EMERGENCY ESCAPE RAMPS		R-4	10+600	L.H.S	I-17	9+320	L.H.S		M-2	MA'IN INTERSECTION	SEE NOTE (1) [2.0 No.]																		
	8+450	R.H.S	9+440 TO 9+500 (EACH 20m.)	L.H.S	R-4	PARKWAY FACILITY	RAMP (A)	I-18	11+200	R.H.S		M-3	DEAD SEA INTERSECTION	SEE NOTE (1) [4.0 No.]																		
	9+050	R.H.S	9+800 TO 9+950 (EACH 20m.)	R.H.S	R-4	PARKWAY FACILITY	RAMP (B)	I-19	MA'IN INTERSECTION	SEE NOTE (1)		M-3	MA'IN INTERSECTION	SEE NOTE (1) [1.0 No.]																		
	9+360	R.H.S	10+120 TO 10+160 (EACH 20m.)	L.H.S	R-5	MA'IN INTERSECTION	SEE NOTE (1)	I-20	MA'IN INTERSECTION	SEE NOTE (1)		M-4	MA'IN INTERSECTION	SEE NOTE (1) [1.0 No.]																		
9+960	L.H.S	10+190 TO 10+210 (EACH 20m.)	R.H.S	R-5	DEAD SEA INTERSECTION	SEE NOTE (1)	I-21	11+560	L.H.S	INFORMATIVE SIGNS	I-21	11+560	L.H.S	MANDATORY SIGNS	M-4	MA'IN INTERSECTION	SEE NOTE (1) [1.0 No.]															
10+980	R.H.S	10+210 TO 10+260 (EACH 20m.)	BOTH SIDE	R-5	DEAD SEA INTERSECTION	SEE NOTE (1) [2.0 No.]	I-22	11+400	L.H.S		I-22	11+400	L.H.S		M-4	MA'IN INTERSECTION	SEE NOTE (1) [2.0 No.]															
W-3	5+725	L.H.S	10+260 TO 10+310 (EACH 20m.)	R.H.S	R-5	DEAD SEA INTERSECTION	SEE NOTE (1) [2.0 No.]	I-23	MA'IN INTERSECTION		SEE NOTE (1)	INFORMATIVE SIGNS	I-23		MA'IN INTERSECTION	SEE NOTE (1)	MANDATORY SIGNS	M-1	DEAD SEA INTERSECTION	SEE NOTE (1) [2.0 No.]												
	PARKWAY FACILITY	RAMP (B)	10+310 TO 10+330 (EACH 20m.)	BOTH SIDE	R-5	DEAD SEA INTERSECTION	SEE NOTE (1) [2.0 No.]	INFORMATIVE SIGNS	M-1		PARKWAY FACILITY		RAMP (A)		MANDATORY SIGNS	M-1		PARKWAY FACILITY	RAMP (A)													
	9+850	R.H.S	10+330 TO 10+350 (EACH 20m.)	L.H.S	M-1	PARKWAY FACILITY	RAMP (B)		INFORMATIVE SIGNS		M-1		MA'IN INTERSECTION			SEE NOTE (1) [2.0 No.]		MANDATORY SIGNS	M-1	MA'IN INTERSECTION	SEE NOTE (1) [2.0 No.]											
	10+550	L.H.S	10+610 TO 10+660 (EACH 20m.)	L.H.S	M-1	MA'IN INTERSECTION	SEE NOTE (1) [2.0 No.]				INFORMATIVE SIGNS		M-2			DEAD SEA INTERSECTION			SEE NOTE (1) [1.0 No.]	MANDATORY SIGNS	M-2	DEAD SEA INTERSECTION	SEE NOTE (1) [1.0 No.]									
	W-4	0+250	R.H.S	10+700 TO 10+770 (EACH 20m.)	L.H.S	M-2	DEAD SEA INTERSECTION						SEE NOTE (1) [1.0 No.]			INFORMATIVE SIGNS			M-2		DEAD SEA INTERSECTION	SEE NOTE (1) [1.0 No.]	MANDATORY SIGNS	M-2	DEAD SEA INTERSECTION	SEE NOTE (1) [1.0 No.]						
		1+750	R.H.S	11+100 TO 11+140 (EACH 20m.)	R.H.S	M-2	MA'IN INTERSECTION						SEE NOTE (1) [1.0 No.]						INFORMATIVE SIGNS		M-2	MA'IN INTERSECTION		SEE NOTE (1) [1.0 No.]	MANDATORY SIGNS	M-2	MA'IN INTERSECTION	SEE NOTE (1) [1.0 No.]				
		2+200	R.H.S	11+260 TO 11+300 (EACH 20m.)	R.H.S	M-3	DEAD SEA INTERSECTION						SEE NOTE (1) [4.0 No.]								INFORMATIVE SIGNS	M-3		DEAD SEA INTERSECTION		SEE NOTE (1) [4.0 No.]	MANDATORY SIGNS	M-3	DEAD SEA INTERSECTION	SEE NOTE (1) [4.0 No.]		
		2+250	L.H.S	PARKWAY FACILITY	RAMP (B)	M-3	MA'IN INTERSECTION						SEE NOTE (1) [1.0 No.]									INFORMATIVE SIGNS		M-3		MA'IN INTERSECTION		SEE NOTE (1) [1.0 No.]	MANDATORY SIGNS	M-3	MA'IN INTERSECTION	SEE NOTE (1) [1.0 No.]
		2+700	R.H.S	W-6a	5+850	R.H.S	[WITH ADDITIONAL PANEL 5500m ²]			INFORMATIVE SIGNS			I-1	DEAD SEA INTERSECTION										SEE NOTE (1)		MANDATORY SIGNS		M-3		DEAD SEA INTERSECTION	SEE NOTE (1) [4.0 No.]	
		2+825	L.H.S		6+800	R.H.S	INFORMATIVE SIGNS						I-2	DEAD SEA INTERSECTION										SEE NOTE (1)				MANDATORY SIGNS		M-3	DEAD SEA INTERSECTION	SEE NOTE (1) [4.0 No.]
3+575		L.H.S	7+950		L.H.S	INFORMATIVE SIGNS						I-3	DEAD SEA INTERSECTION	SEE NOTE (1)			MANDATORY SIGNS							M-3						DEAD SEA INTERSECTION	SEE NOTE (1) [4.0 No.]	
4+350		R.H.S	W-6b		11+380			L.H.S				INFORMATIVE SIGNS	I-4	DEAD SEA INTERSECTION	SEE NOTE (1)									MANDATORY SIGNS						M-3	DEAD SEA INTERSECTION	SEE NOTE (1) [4.0 No.]
4+875		R.H.S			W-7a			0+060	R.H.S				[WITH ADDITIONAL PANEL 5500m ²]	INFORMATIVE SIGNS	I-5			DEAD SEA INTERSECTION												SEE NOTE (1)	MANDATORY SIGNS	M-3
5+025		L.H.S						W-7b	10+200		R.H.S		INFORMATIVE SIGNS		I-6			DEAD SEA INTERSECTION		SEE NOTE (1)										MANDATORY SIGNS		M-3
10+450	R.H.S	1+600							R.H.S		INFORMATIVE SIGNS				I-7	0+400		L.H.S		MANDATORY SIGNS			M-3									DEAD SEA INTERSECTION
10+960	L.H.S	1+800							L.H.S						INFORMATIVE SIGNS	I-8		5+500	R.H.S				MANDATORY SIGNS		M-3							DEAD SEA INTERSECTION
11+160	R.H.S	3+600							R.H.S							INFORMATIVE SIGNS		I-9	PARKWAY FACILITY		RAMP (A)				MANDATORY SIGNS		M-3					DEAD SEA INTERSECTION
W-5a	0+125 TO 0+225 (EACH 20m.)	R.H.S							1+300									R.H.S	INFORMATIVE SIGNS		I-10	PARKWAY FACILITY					RAMP (A)		MANDATORY SIGNS			M-3
	0+400 TO 0+500 (EACH 20m.)	L.H.S		1+300					R.H.S	INFORMATIVE SIGNS								I-11			6+125	L.H.S				MANDATORY SIGNS	M-3					DEAD SEA INTERSECTION
	0+700 TO 0+880 (EACH 20m.)	R.H.S		2+350			R.H.S		INFORMATIVE SIGNS									I-12			8+500	R.H.S					MANDATORY SIGNS	M-3				DEAD SEA INTERSECTION
	1+240 TO 1+400 (EACH 20m.)	L.H.S		4+050		R.H.S	INFORMATIVE SIGNS										I-13	8+900			R.H.S	MANDATORY SIGNS						M-3				DEAD SEA INTERSECTION
	1+580 TO 1+720 (EACH 20m.)	R.H.S	5+050	R.H.S		INFORMATIVE SIGNS						I-14					8+920	L.H.S			MANDATORY SIGNS			M-3				DEAD SEA INTERSECTION				SEE NOTE (1) [4.0 No.]
	2+540 TO 2+660 (EACH 20m.)	L.H.S	5+625	R.H.S	INFORMATIVE SIGNS							I-15		8+920			L.H.S	MANDATORY SIGNS						M-3				DEAD SEA INTERSECTION			SEE NOTE (1) [4.0 No.]	
	3+120 TO 3+240 (EACH 20m.)	R.H.S	5+925	L.H.S				INFORMATIVE SIGNS				I-16	9+150	R.H.S			MANDATORY SIGNS							M-3				DEAD SEA INTERSECTION		SEE NOTE (1) [4.0 No.]		
	3+280 TO 3+420 (EACH 20m.)	L.H.S	6+075	R.H.S							INFORMATIVE SIGNS	I-17	9+320	L.H.S						MANDATORY SIGNS				M-3				DEAD SEA INTERSECTION		SEE NOTE (1) [4.0 No.]		
	3+640 TO 3+760 (EACH 20m.)	R.H.S	7+000	R.H.S								INFORMATIVE SIGNS	I-18	11+200	R.H.S								MANDATORY SIGNS	M-3				DEAD SEA INTERSECTION		SEE NOTE (1) [4.0 No.]		
	4+040 TO 4+300 (EACH 20m.)	L.H.S	7+550	L.H.S									INFORMATIVE SIGNS	I-19	MA'IN INTERSECTION	SEE NOTE (1)								MANDATORY SIGNS	M-3			DEAD SEA INTERSECTION		SEE NOTE (1) [4.0 No.]		
4+500 TO 4+660 (EACH 20m.)	R.H.S	PARKWAY FACILITY	RAMP (A)	INFORMATIVE SIGNS										I-20	MA'IN INTERSECTION	SEE NOTE (1)			MANDATORY SIGNS						M-3			DEAD SEA INTERSECTION	SEE NOTE (1) [4.0 No.]			
4+740 TO 4+860 (EACH 20m.)	L.H.S	PARKWAY FACILITY	RAMP (B)							INFORMATIVE SIGNS				I-21	11+560	L.H.S									MANDATORY SIGNS	M-3		DEAD SEA INTERSECTION	SEE NOTE (1) [4.0 No.]			
5+020 TO 5+160 (EACH 20m.)	R.H.S	8+750	R.H.S						INFORMATIVE SIGNS					I-22	11+400	L.H.S										MANDATORY SIGNS	M-3	DEAD SEA INTERSECTION	SEE NOTE (1) [4.0 No.]			
5+200 TO 5+300 (EACH 20m.)	L.H.S	9+100	L.H.S				INFORMATIVE SIGNS							I-23	MA'IN INTERSECTION	SEE NOTE (1)						MANDATORY SIGNS					M-3	DEAD SEA INTERSECTION	SEE NOTE (1) [4.0 No.]			
5+360 TO 5+520 (EACH 20m.)	R.H.S	DEAD SEA INTERSECTION	SEE NOTE (1) [7.0 No.]			INFORMATIVE SIGNS								I-23	MA'IN INTERSECTION	SEE NOTE (1)					MANDATORY SIGNS						M-3	DEAD SEA INTERSECTION	SEE NOTE (1) [4.0 No.]			
9+460 TO 9+560 (EACH 20m.)	R.H.S	MA'IN INTERSECTION	SEE NOTE (1) [6.0 No.]		INFORMATIVE SIGNS									I-23	MA'IN INTERSECTION	SEE NOTE (1)		MANDATORY SIGNS									M-3	DEAD SEA INTERSECTION	SEE NOTE (1) [4.0 No.]			
10+620 TO 10+760 (EACH 20m.)	R.H.S	0+150	L.H.S					INFORMATIVE SIGNS						I-23	MA'IN INTERSECTION	SEE NOTE (1)	MANDATORY SIGNS										M-3	DEAD SEA INTERSECTION	SEE NOTE (1) [4.0 No.]			
10+800 TO 10+900 (EACH 20m.)	L.H.S	DEAD SEA INTERSECTION	SEE NOTE (1) [2.0 No.]								INFORMATIVE SIGNS			I-23	MA'IN INTERSECTION	SEE NOTE (1)				MANDATORY SIGNS							M-3	DEAD SEA INTERSECTION	SEE NOTE (1) [4.0 No.]			
11+040 TO 11+160 (EACH 20m.)	R.H.S	11+250	R.H.S									INFORMATIVE SIGNS		I-23	MA'IN INTERSECTION	SEE NOTE (1)							MANDATORY SIGNS				M-3	DEAD SEA INTERSECTION	SEE NOTE (1) [4.0 No.]			
11+280 TO 11+340 (EACH 20m.)	R.H.S	11+550	L.H.S										INFORMATIVE SIGNS	I-23	MA'IN INTERSECTION	SEE NOTE (1)								MANDATORY SIGNS			M-3	DEAD SEA INTERSECTION	SEE NOTE (1) [4.0 No.]			
W-5b	0+360 TO 0+400 (EACH 20m.)	L.H.S	0+100	R.H.S										REGULATORY SIGNS	R-1	0+100			R.H.S								MANDATORY SIGNS	M-1	DEAD SEA INTERSECTION	SEE NOTE (1) [2.0 No.]		
	0+960 TO 1+120 (EACH 20m.)	L.H.S	1+100	R.H.S						R-1					1+100	R.H.S			M-1						PARKWAY FACILITY			RAMP (A)				
	1+420 TO 1+580 (EACH 20m.)	R.H.S	4+450	L.H.S					R-1	4+450					L.H.S	M-1			PARKWAY FACILITY						RAMP (B)							
	1+840 TO 2+280 (EACH 20m.)	L.H.S	10+590	R.H.S			R-1		10+590	R.H.S					M-1	MA'IN INTERSECTION			SEE NOTE (1) [2.0 No.]													

NOTE:-
1) FOR LOCATIONS OF SIGNS AT THE DEAD SEA INTERSECTION, THE PARKWAY FACILITY AND MA'IN INTERSECTION SEE RELEVANT DRAWINGS.

Project:
Tourism Sector Development Project in the Hashemite Kingdom of Jordan

Executing Agency:
The Ministry of Tourism and Antiquities
The Ministry of Planning

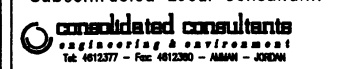
SUB-PROJECT:
Dead Sea Parkway

Note:
This detailed design has been executed by a team of consultants as shown below in accordance with the agreement between Japan International Cooperation Agency (JICA) and JICA Study Team. The copyright of this drawing rests with JICA.

Designed by:
Japan International Cooperation Agency (JICA)

JICA Study Team:
Joint Venture of Pacific Consultants International and Yamasita Sekkei inc.

Subcontracted Local Consultant:



Drawing Title:
TRAFFIC SIGNS SCHEDULE

Scale:
NOT TO SCALE

Drawing No.:
DSPW-115



RIGHT BEND
W-1



LEFT BEND
W-2



DOUBLE BEND ON SUCCESSION
OF MORE THAN TWO BENDS THE
FIRST TO THE RIGHT
W-3



DOUBLE BEND ON SUCCESSION
OF MORE THAN TWO BENDS THE
FIRST TO THE LEFT
W-4



CHEVRON MARKER
ONE CHEVRON (Double)
W-5a



CHEVRON MARKER
ONE CHEVRON
W-5b



STEEP DESCENT
W-6a



STEEP DESCENT
W-6b



STEEP ASCENT
W-7a



STEEP ASCENT
W-7b



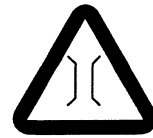
FALLING ROCKS
FROM THE RIGHT
W-8



FALLING ROCKS
FROM THE LEFT
W-9



PEDESTRIAN CROSSING
W-10



BRIDGE AHEAD
W-11



TWO-WAY TRAFFIC
W-12



INTERSECTING MINOR ROAD
FROM RIGHT
W-13



INTERSECTING MINOR ROAD
FROM LEFT
W-14



SIDE OBSTACLE
MARKER
W-15



T-JUNCTION AHEAD
W-16

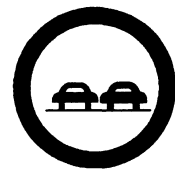
WARNING SIGNS



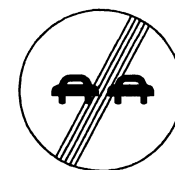
SPEED LIMIT=30 km/h
R-1



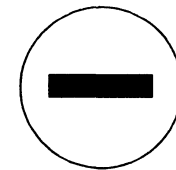
SPEED LIMIT=50 km/h
R-2



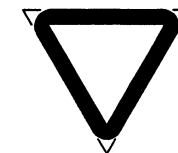
OVERTAKING PROHIBITED
R-3



END OF PROHIBITION
OF OVERTAKING
R-4



NO ENTRY
R-5

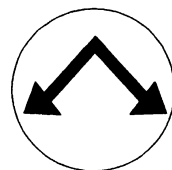


YIELD
R-6

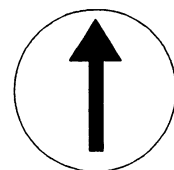


STOP
R-7

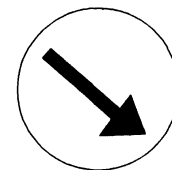
REGULATORY SIGNS



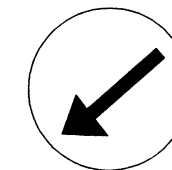
PASS EITHER SIDE
M-1



PASS STRAIGHT ON
M-2



PASS TO THE RIGHT SIDE
M-3



PASS TO THE LEFT SIDE
M-4

MANDATORY SIGNS

NOTES :

- 1) ALL DIMENSIONS ARE IN CMS.
- 2) ALL TRAFFIC SIGNS SHOULD CONFORM TO THE MANUAL ON TRAFFIC ON TRAFFIC CONTROL DEVICES OF MPWH OF THE HASHEMITE KINGDOM OF JORDAN

DANGER - WARNING SIGNS

- 1) UNLESS OTHERWISE SHOWN ON THE PLANS, THE SIGNS SHALL BE PLACED AT NOT LESS THAN 150m, AND NOT MORE THAN 250m FROM THE HAZARD UNLESS THIS IS IMPRACTICABLE ON ACCOUNT OF LOCAL CONDITIONS. IN SUCH CASE THE SIGNS SHALL BE PLACED AS PER INSTRUCTION OF THE ENGINEERS REPRESENTATIVE.

REGULATORY SIGNS

- 1) THE SIGNS SHALL BE PLACED IN THE IMMEDIATE VICINITY OF THE POINT WHERE THE PROHIBITION OR OBLIGATION STARTS OR CONTINUES. NEVERTHELESS THE SIGN PROHIBITING TURNING OR SHOWING THE DIRECTION TO BE FOLLOWED MAY BE PLACED AT A SUITABLE DISTANCE IN ADVANCE.

Project:
Tourism Sector Development Project
in the Hashemite Kingdom of Jordan

Executing Agency:
The Ministry of Tourism and Antiquities
The Ministry of Planning

SUB-PROJECT:
Dead Sea Parkway

Note:
This detailed design has been executed by a team of consultants as shown below in accordance with the agreement between Japan International Cooperation Agency (JICA) and JICA Study Team.
The copyright of this drawing rests with JICA.

Designed by:
Japan International Cooperation Agency (JICA)

JICA Study Team:
Joint Venture of
Pacific Consultants International and
Yamasita Sekkei Inc.

Subcontracted Local Consultant:

consolidated consultants
Engineering & Architecture
Tel: 4612377 - Fax: 4612360 - AMMAN - JORDAN

Drawing Title:
WARNING , REGULATORY &
MANDATORY SIGNS

Scale:
NOT TO SCALE

Drawing No.:
DSPW-116

THE GOVERNMENT OF
THE HASHEMITE KINGDOM OF JORDAN
THE MINISTRY OF TOURISM & ANTIQUITIES
THE MINISTRY OF PLANNING

APPLICATION FOR PREQUALIFICATION
AS A TENDERER

DEAD SEA PARKWAY SUB-PROJECT
THE TOURISM SECTOR DEVELOPMENT PROJECT

APPLICATION FOR PREQUALIFICATION AS A TENDERER

Applicant Name: _____

Organization of Applicant

The proposed Organization will be: (Tick where applicable)

- (a) Main Contractor with/without Sub-Contractor(s) ()
- (b) Joint Venture with/without Sub-Contractor(s) ()
- (c) Consortium with/without Sub-Contractor(s) ()
- (d) Partnership with/without Sub-Contractor(s) ()

The Main Contractor' s or Majority Joint Venture' s, or Consortium Leader' s name and registered address is:

Registered Business Name: _____

Registered Business Address: _____

In accordance with the Prequalification Forms attached, the undersigned Representative,

Name: _____

Title: _____

Company' s Name: _____

is legally authorized to act in the name and on be half of the Applicant.

and the following co-applicant members:

* : Enter full name and address of the Co-Applicant(s) who are either Joint Venture/Consortium partners

(a)

(b)

(c)

(d)

By this application, the undersigned Representative, who acts in the name and on behalf of the Co-Applicant(s) declares:

1. That he guarantees the truthfulness and exactness of all statements and answers made in the Pre-qualification Questionnaire and in the attached documents.
2. That MPWH or delegates is authorized to effect any investigation to prove the truthfulness of the statements and documents submitted and to obtain clarifications and information on the technical and financial standing of the Applicant(s).
3. That he accepts unconditionally the periods fixed for the Prequalification of Applicants and for the Tender Preparation, and renounces consequently to ask for any extension.
4. That, by view of the Power of Attorney with which he has been granted, he has the widest authority to execute agreements and to effect all the formalities for the Tender.
5. That the address in which he fixes his legal domicile for the purposes of this Prequalification and subsequent Tender, to which MPWH and its delegates may direct all correspondence, is as follows:

----- th -----, 2,000 Representative name: _____

(Signature _____)

Title _____

THE GOVERNMENT OF
THE HASHEMITE KINGDOM OF JORDAN
THE MINISTRY OF TOURISM & ANTIQUITIES
THE MINISTRY OF PLANNING

PREQUALIFICATION APPLICATION FORM

FOR CONTRACTORS

DEAD SEA PARKWAY SUB-PROJECT
THE TOURISM SECTOR DEVELOPMENT PROJECT

THE TOURISM SECTOR DEVELOPMENT PROJECT
DEAD SEA PARKWAY SUB-PROJECT
Prequalification of Contractor

COVER

Prequalification Forms
Submitted to THE MINISTRY OF PUBLIC WORKS AND HOUSING

Name and address of the Applicant:

Date:

Signed:
(Name)

Position:
(Director or duly authorized
Representative of the Company,
Consortium, Joint Venture)

((Note: If this Prequalification is returned on behalf of a consortium or a joint venture, a duly authorized representative of each company must also signed)

Project: The Tourism Sector Development Project
DEAD SEA PARKWAY SUB-PROJECT

Note to Applicants

1. Please answer all questions.
 2. Supplementary page may be photocopied and insert if required.
 3. Please retain a copy of your complete submission.
 4. If a consortium or a joint venture is proposed, all member companies are to respond to all questions. Insert the member company name after the “Applicant” in the title block.
 5. The Local Applicant(s) shall provide a copy of the Contractors Classification Certificate issued in accordance with Article “23” of the Government’s Works By-Low No. “71” for the year 1986 and any amendments made thereon or any other substitute By-Low.
 6. Project financial data is to be given in Jordanian Dinar unless otherwise required. The exchange rate must mention in each financial data form.
 7. If any of the required information is not available, insert “Not Available”
 8. If any of the required information is not applicable, insert “Not Applicable”
 9. At submission, print page number at the top right. Discard the page number at the bottom.
-

Project: The Tourism Sector Development Project
DEAD SEA PARKWAY SUB-PROJECT

Applicant: _____

Form No. 1 : Consortium or Joint Venture - 1

If the Company intends to enter into a consortium or joint venture for the Works, please give the following information. Otherwise state "Not Applicable"

1. Particulars of consortium or joint ventures:

Name:

Address:

Telephone and Fax. Numbers:

Proposed share ratio:

Proposed work division:

Responsibility/liability toward MPWH:

2. Name of Company leading the Consortium or Joint Venture:

(Note: The leader of the consortium or joint venture must submit duly authorized board resolutions from other partner companies acknowledging their intention to form a consortium or joint venture)

Project: **The Tourism Sector Development Project**
 DEAD SEA PARKWAY SUB-PROJECT

Applicant: _____

Form No. 1 : Consortium or Joint Venture - 2

3. Please indicate name and address of Bankers to the consortium or joint venture. (Details of further available facilities in the name of the consortium or joint venture, if any, to be attached)

a) Name:

Address:

Contact person:

Telephone and Fax. Numbers:

b)

4. Please indicate the chart showing the consortium or joint venture organization proposed for this Prequalification and show the major function of each company.

Proposed Consortium or joint venture organization chart

Project: The Tourism Sector Development Project
DEAD SEA PARKWAY SUB-PROJECT

Applicant: _____

Form No.2 : Company and Structure - 2

7. Name and address of associated companies to be involved in the project – and whether parent/subsidiary/other:

a) Name :

Address :

Parent/subsidiary/other (specify)

b)

8. If the company is a subsidiary, what involvement, if any, will the parent company have in the project?

9. Please indicate here or attach an organization chart showing the Company structure including the name and position/title of senior management, directors and key personnel.

Company Organization Chart
(If Consortium or joint venture, each company's organization)

Project: The Tourism Sector Development Project
DEAD SEA PARKWAY SUB-PROJECT

Applicant: _____

Form No.2 : Company and Structure - 3

10. Please give the names, title and responsibility of each of the senior management and directors of each company.

a) Name :

Title :

Responsibility :

b)

11. Please indicate here or attach an organization chart showing the Company's structure for the business operations in Jordan, if any, including the name and position/title of the senior management and directors responsible for each of the business operations.

Project: **The Tourism Sector Development Project**
 DEAD SEA PARKWAY SUB-PROJECT

Applicant: _____

Form No.2 : Company and Structure- 4

12. Please describe particulars of representative office in Jordan, if any.

Business registration:

Number of employees:

Representative's name:

Title:

Office address:

Telephone number:

Fax. Number:

Other useful information:

13. Please indicate here or attach a chart showing the Company's worldwide operation network together with the business operations of the respective office

Project: **The Tourism Sector Development Project**
 DEAD SEA PARKWAY SUB-PROJECT

Applicant: _____

Form No.3 : Organization and Personnel Resources - 1

1. Please indicate number of current staff:

<u>Company</u>	<u>Technical</u>	<u>Administrative</u>	<u>Total</u>
----------------	------------------	-----------------------	--------------

2. Please list present senior management and directors:

<u>Company</u>	<u>Name</u>	<u>Present Position</u>	<u>years of experience</u> <u>With the Company/</u> <u>in construction</u>
----------------	-------------	-------------------------	--

Project: The Tourism Sector Development Project
DEAD SEA PARKWAY SUB-PROJECT

Applicant: _____

Form No.3 : Organization and Personnel Resources - 2

3. Please indicate the chart showing the project organization proposed for construction of the Works and showing major functions down to the level of lead discipline engineers and supervisor.

(Note: Indicate ether full-time or part-time assignment on the Project)

Proposed Project Organization Chart

Functions:

- a) Head office Support: Director of Division/Department
 - b) Project manager
 - c) Section managers
 - d) Supervisors
 - e) Supporting staff
- etc.

4. Please attach resume of each candidate for the key personnel described in the project organization shown in 3, above in the format below:

a) Name:

Present position:

Proposed position in the organization in 3 above:

Qualification:

Years of experience with Company

Years of experience in construction:

Years of experience in design (if applicable):

Major works for which responsible (type and value):

4. Please indicate the name and detail information of proposed independent Testing Agency or Laboratory.

Project: **The Tourism Sector Development Project**
 DEAD SEA PARKWAY SUB-PROJECT

Applicant: _____

Form No.4 : Construction Equipment Resources – 1 (Company owned equipment)

1. Please describe about the construction equipment owned by the Company.

<u>Description</u>	<u>Year of</u> <u>Manufacture</u>	<u>Total Hours</u> <u>to date</u>	<u>Present</u> <u>Location</u>	<u>Available</u> <u>Time/Period</u>
--------------------	--------------------------------------	--------------------------------------	-----------------------------------	--

(Add any major plant not listed above)

Project: **The Tourism Sector Development Project**
 DEAD SEA PARKWAY SUB-PROJECT

Applicant: _____

Form No.4 : Construction Equipment Resources – 2

(Plant available from other organizations)

2. Please list the construction equipment, which will be readily available for the Works from other organization. List as equipment listed in item 1. Form 4-1.

Construction Equipment type:

Name of organization owning the equipment:

Basis on which equipment will be made available (i.e. sale, lease, hire or sub contract):

Description (capacity):

Year of manufacture:

Total operation hours to date:

Present location:

Available time and period:

Form 5-1

Project: **The Tourism Sector Development Project**
 DEAD SEA PARKWAY SUB-PROJECT

Applicant: _____

Form No.5 : Manpower Resources– 1 (labour directly employed by the Company at present)

1. Please indicate number of direct employees:

Position/Trades

No. of licensed Employees

No. of non-licensed

(Add any classification not included above)

Project: The Tourism Sector Development Project
DEAD SEA PARKWAY SUB-PROJECT

Applicant: _____

Form No.5 : Manpower Resources– 2 (labour employed by the Company directly or indirectly over the last two (2) years)

2. Please indicate number of employees of the following positions/trades directly or indirectly employed over the last (2) years:

<u>Position/Trades</u>	<u>No. of licensed Employees</u>	<u>No. of non-licensed</u>
------------------------	----------------------------------	----------------------------

(Add any classification not included above)

Project: **The Tourism Sector Development Project**
DEAD SEA PARKWAY SUB-PROJECT

Applicant: _____

Form No.7 : Financial Statement - 1

ALL FIGURES IN JORDANIAN DINAR

1. Authorized Capital:

 Paid Capital:

 Total Assets:

 Net Worth:,

2. Annual value of construction work undertaken for each of the last five (5) years and project for current year:

Year	Current	1,999	1,998	1,997	1,996	1,995
Company						
Group of						
Companies						

3. Approximate value of work in hand:

4. No of Contracts in hand:

5. Highest value contract during the past five (5) years:

6. Highest annual turnover for single contract in past five (5) years:

Project: The Tourism Sector Development Project
DEAD SEA PARKWAY SUB-PROJECT

Applicant: _____

Form No.7 : Financial Statement - 2

7. Please attach copies of the Applicants Audited Balance Sheets and Profit and Loss Statements for each Company's Years from 1994/1995 to 1998/1999 inclusive with explanation of Extraordinary Items. Information should clearly show Capital Turnover, Capital Employed, Gross Profits after Taxes.

Please complete the following Table to show some key financial Ratios for the Year 1994/1995 to 1998/1999.

Item	1995	1996	1997	1998	1999
1. Current Ratio					
2. Debt Equity Ratio					
3. Debt Service Ratio					
4. Operation Ratio					
5. Return on Fixed Assets					

$$1. \text{ Current Ratio} = \frac{\text{Current Assets}}{\text{Current Liabilities}}$$

$$2. \text{ Debt Equity Ratio} = \frac{\text{Total Debt (Liabilities)}}{\text{Total Stockholder's Equity}}$$

$$3. \text{ Debt Service Ratio} = \frac{\text{Principal Repayment} + \text{Interest Expenses}}{\text{Profit before Interest Expenses}}$$

$$4. \text{ Operation Ratio} = \frac{\text{Operation Expenses}}{\text{Operation Revenue}}$$

$$5. \text{ Return on Fixed Assets} = \frac{\text{Net Profit}}{\text{Fixed Assets}}$$

8. Please attach copy of statement (certified if available) confirming the company's credit line available for the Works.

Note: It should be noted that account will be taken of the current Net Worth and Turnover of the Company (or consortium or joint venture) seeking Prequalification in the context of the value of the contracts to be awarded.

Project: **The Tourism Sector Development Project**
 DEAD SEA PARKWAY SUB-PROJECT

Applicant: _____

Form No.7 : Financial Statement - 3

9. Name and address of Bankers and Auditors from whom references can be obtained, together with details of any further facilities, if any.

Bankers

a) Name:

Address:

Contact Person:

Telephone and Fax. Numbers:

Auditors

a) Name:

Address:

Contact Person:

Telephone and Fax. Numbers:

Note: It should be noted that account will be taken of the current Net Worth and Turnover of the Company (or consortium or joint venture) seeking Prequalification in the context of the value of the contracts to be awarded.

Project: **The Tourism Sector Development Project**
 DEAD SEA PARKWAY SUB-PROJECT

Applicant: _____

Form No.8 :Other Information – 1

The following questions related specifically to the Works should be responded to in detail.

1. Please list name and function of the responsible Division/Department in the Company for the Works, if awarded.

Division/Department:

Function:

Director of Division/Department:

Reporting line to the senior management:

Relation between the Director of Division/Department and the Project Manager:

2. Please describe the Company's standard procedures for the programming and quality assurance and control documents, please attach a copy of one complete set of each document.

3. A tender security in the amount of J.D. ----- will be required for the Tender.
Please obtain and attach here confirmation from the Company's bank or surety that the bond will be provided.

4. Please list the standard insurance policies the Company carry in order to operate the business.

Project: The Tourism Sector Development Project
DEAD SEA PARKWAY SUB-PROJECT

Applicant: _____

Form No.8 :Other Information – 2

5. Please provide plans and procedures to be implemented for technology transfer to Jordan, if Applicant or member of Consortium/Joint Venture is the foreign company. This should including, but not be limited to training, instruction, employment, where applicable, to Jordan personnel, partners and sub-contractors.

6. Please add any further information, which you consider to be relevant to the evaluation of your proposal for Prequalification. If you wish to attach other documents, please list below, or state “Not Available”.
