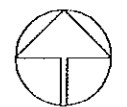
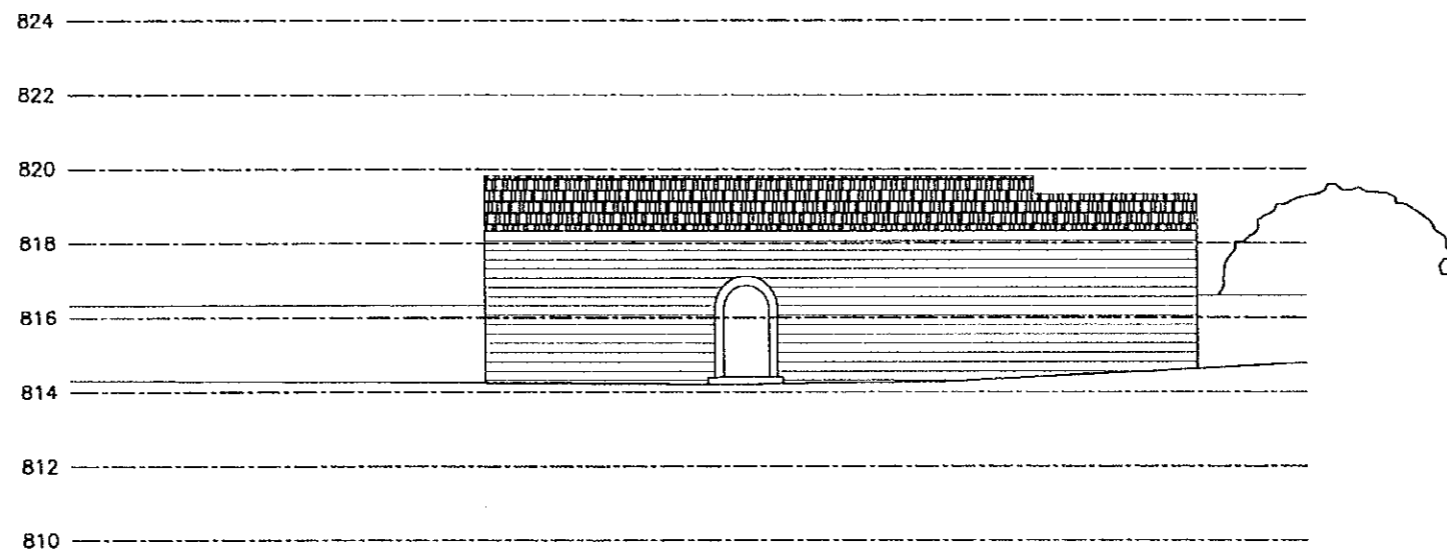
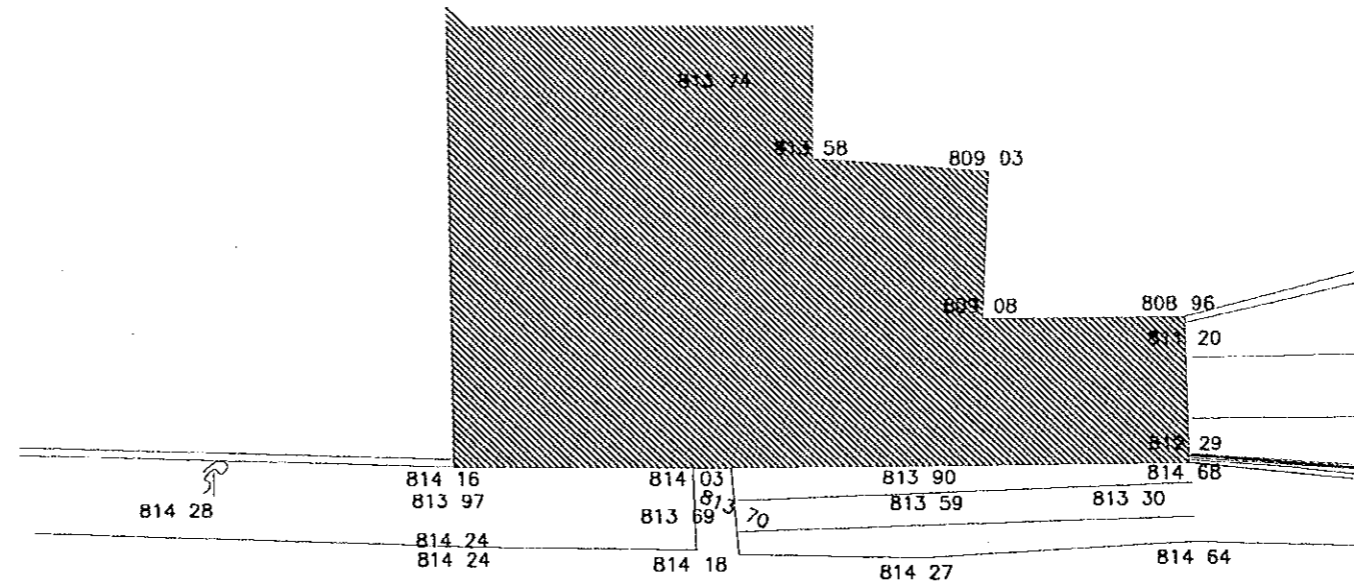
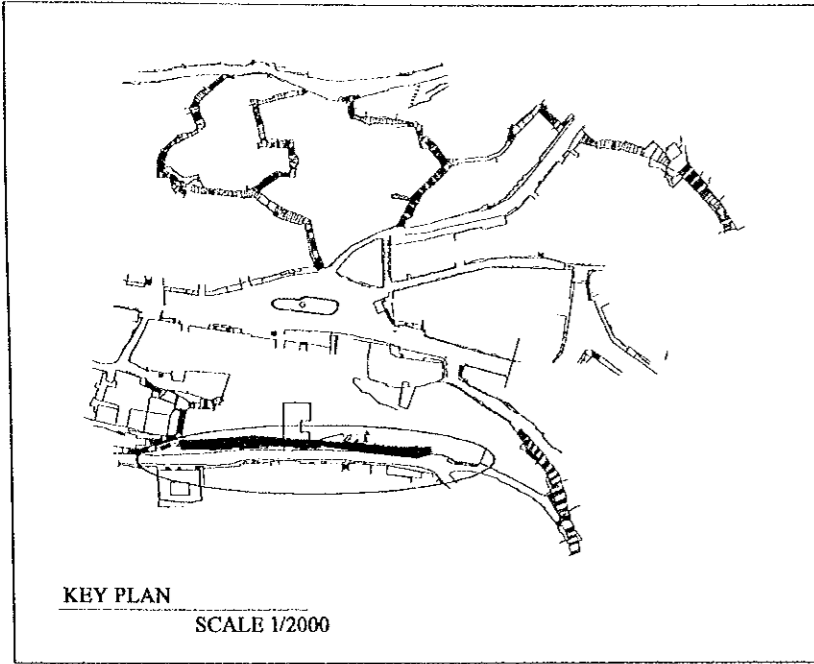


Note:
This detailed design has been executed by a team
of consultants as shown below in accordance with
the agreement between Japan International
Cooperation Agency (JICA) and JICA Study
Team.
The copyright of this drawing rests with JICA.
ALL MEASUREMENTS ARE IN CENTIMETERS.
• DO NOT SCALE FROM DRAWING



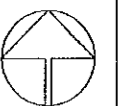
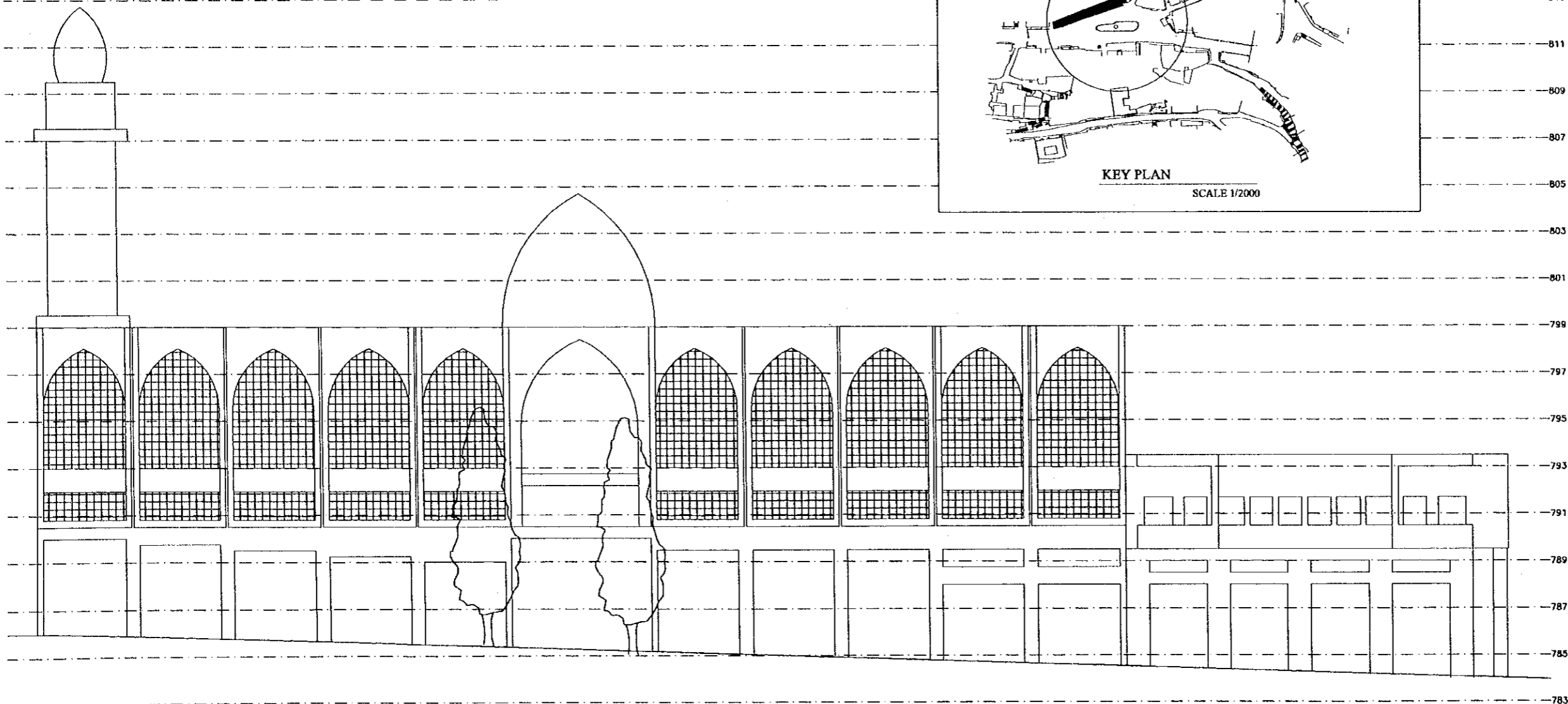
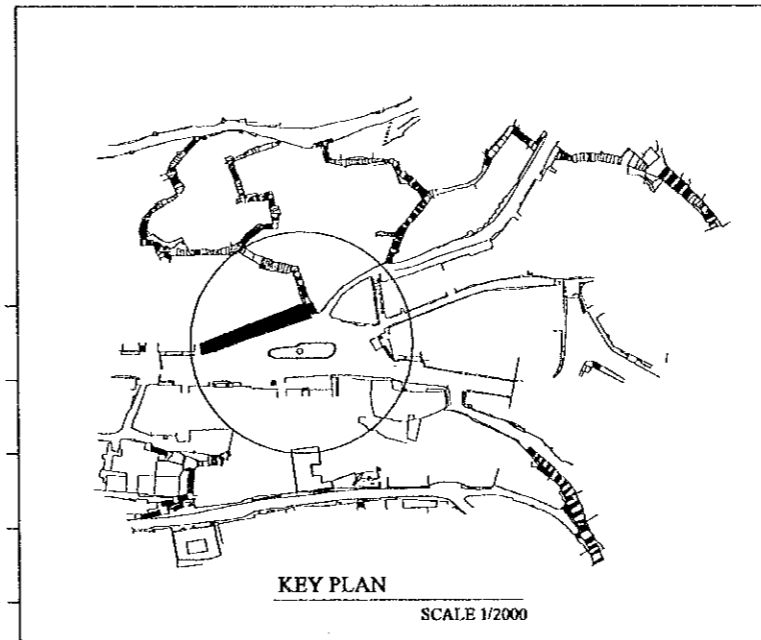
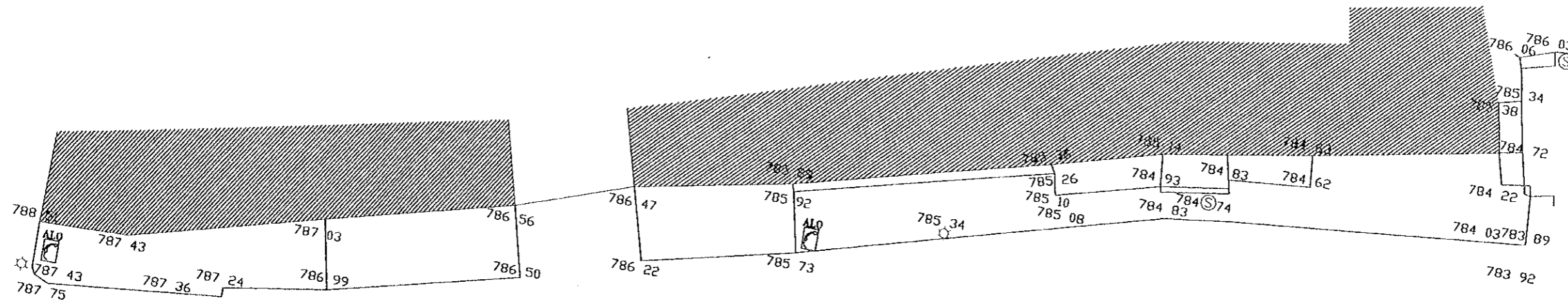
Designed by:
Japan International Cooperation
Agency (JICA)
JICA Study Team:
Joint Venture of
Pacific Consultants International and
Yamasita Sekkei Inc.
Subcontracted Local Consultant:
TIBAH Consultants
Architects, Engineers

DATE JUNE - 10 / 2000

Tourist Trails
Drawing Title:
Upper Jadaa Street A3
Existing Building Elevation

Scale: 1:100
Drawing No.: SD.ATS-09

Note:
This detailed design has been executed by a team
of consultants as shown below in accordance with
the agreement between Japan International
Cooperation Agency (JICA) and JICA Study
Team.
The copyright of this drawing rests with JICA.
ALL MEASUREMENTS ARE IN CENTIMETERS.
• DO NOT SCALE FROM DRAWING



Designed by:
Japan International Cooperation
Agency (JICA)
JICA Study Team:
Joint Venture of
Pacific Consultants International and
Yamasita Sekkei Inc.
Subcontracted Local Consultant:
TIBAH Consultants
Architects, Engineers

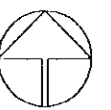
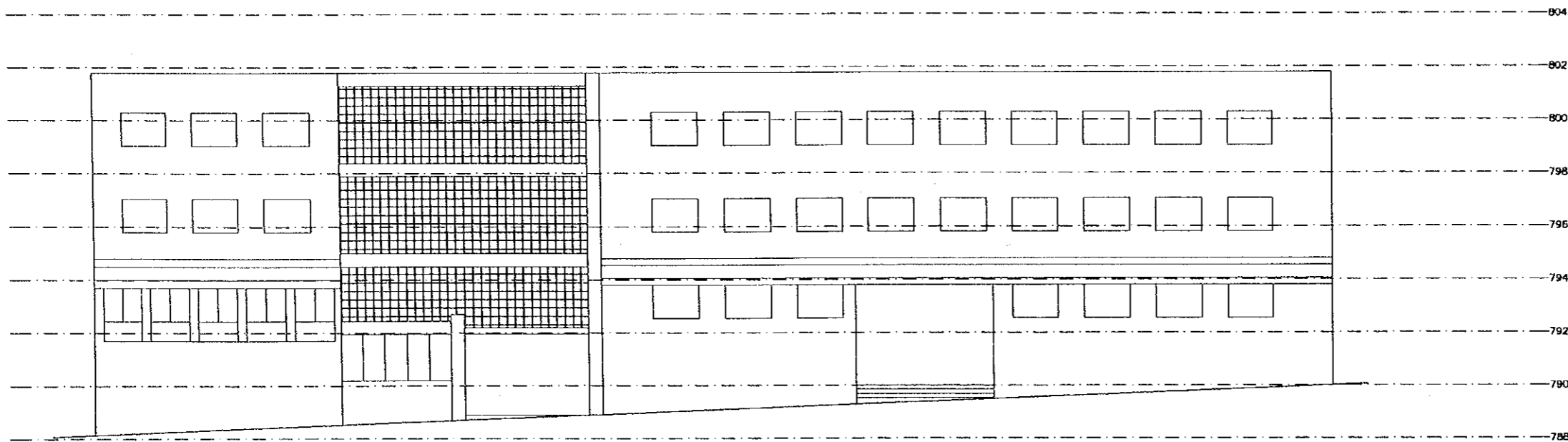
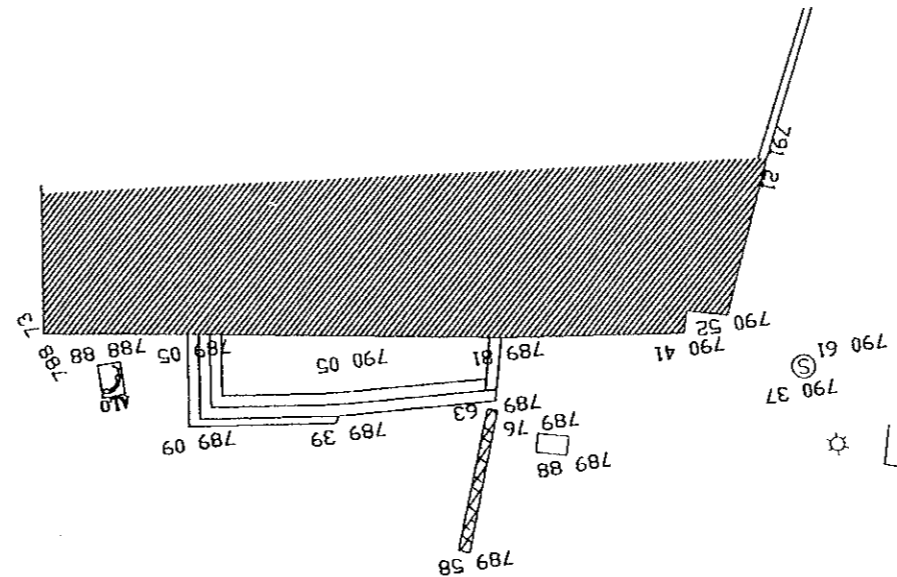
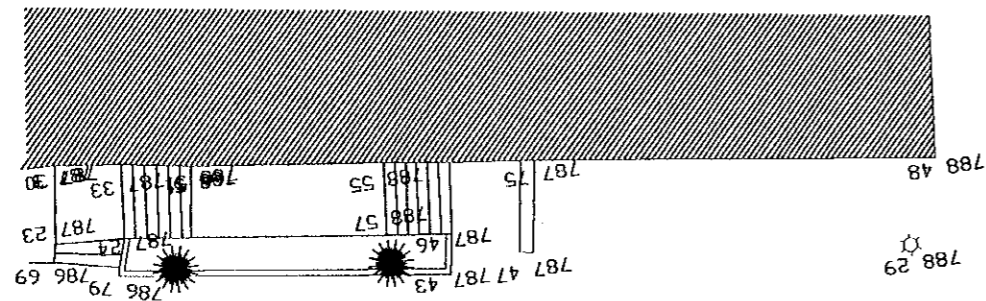
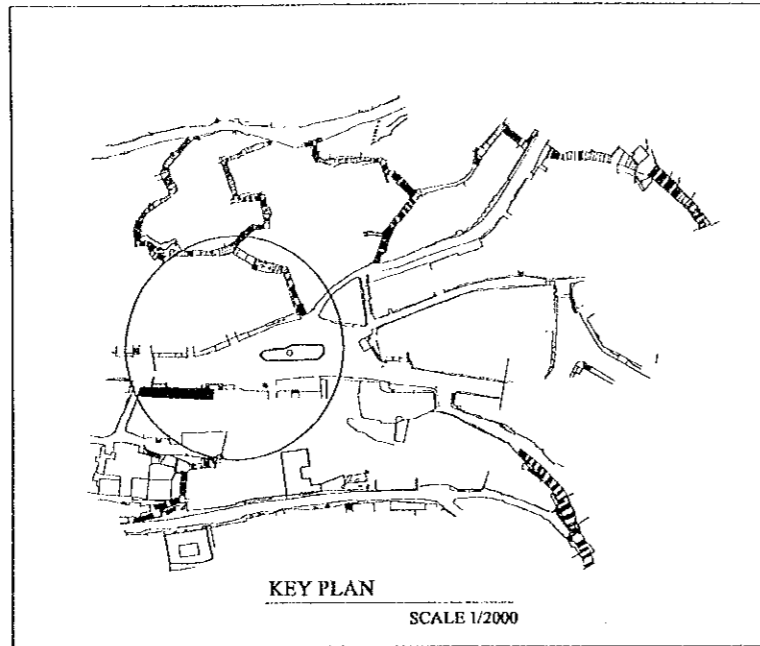
DATE JUNE - 10 / 2000

Tourist Trails

Drawing Site:
Plazas: Ain 1
Existing Building Elevation

Scale: 1:100
Drawing No.: SD.APS-01

Note:
This detailed design has been executed by a team
of consultants as shown below in accordance with
the agreement between Japan International
Cooperation Agency (JICA) and JICA Study
Team.
The copyright of this drawing rests with JICA.
ALL MEASUREMENTS ARE IN CENTIMETERS.
• DO NOT SCALE FROM DRAWING



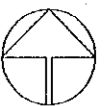
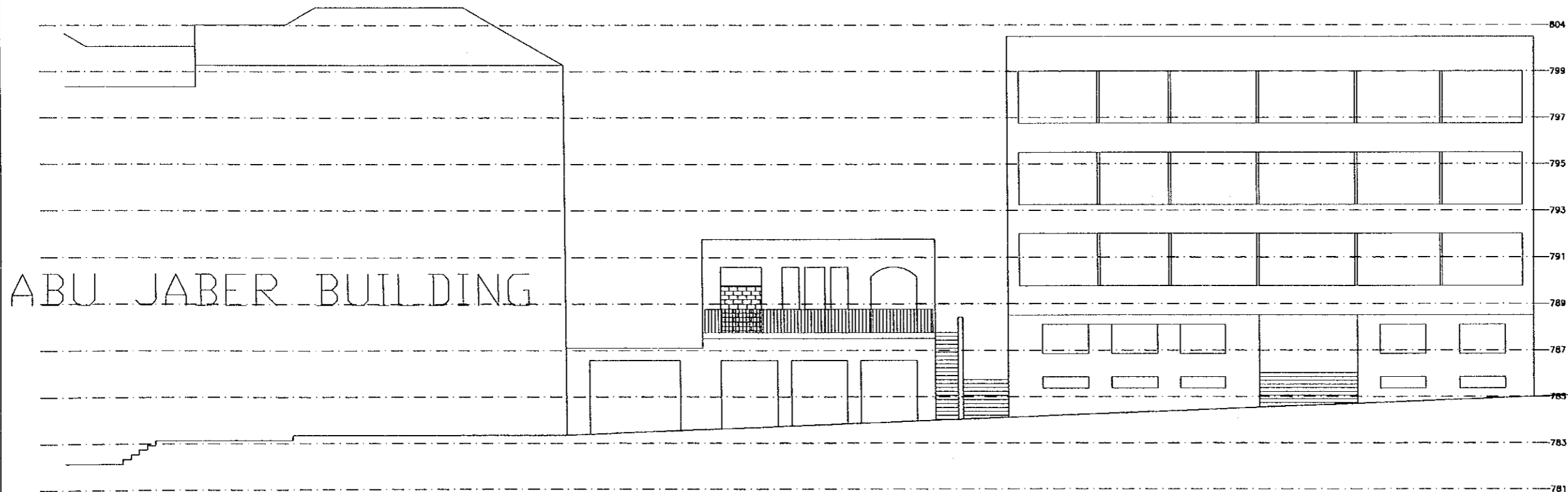
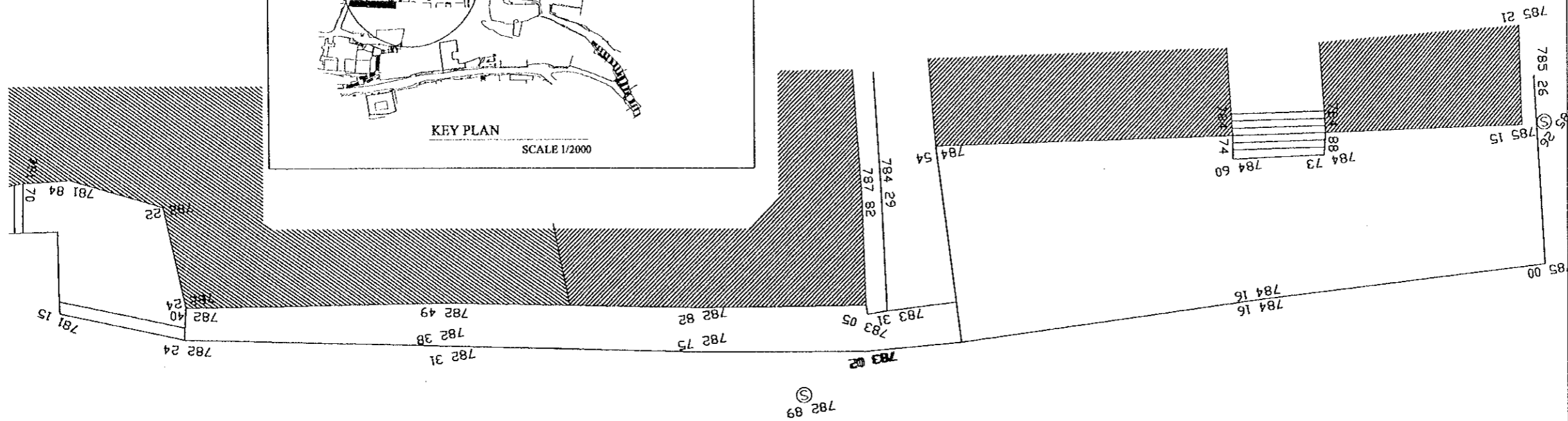
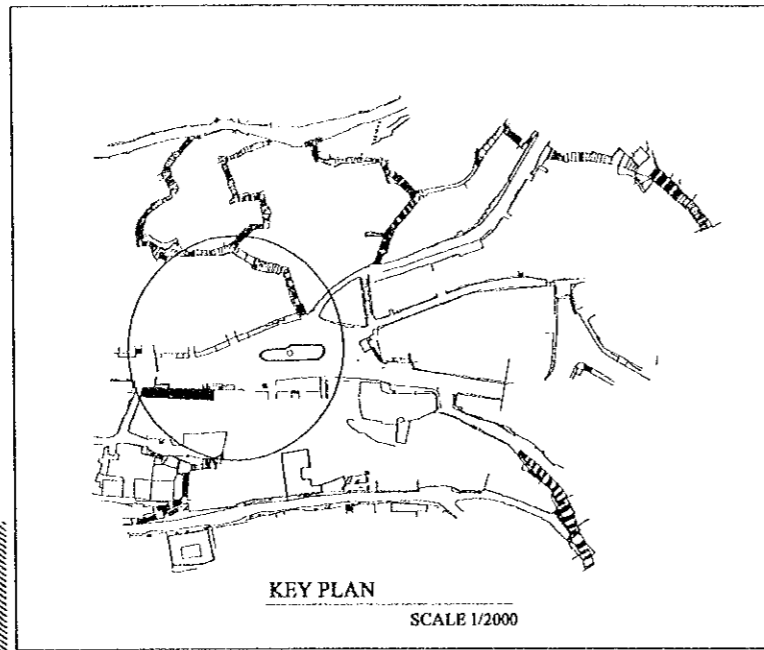
Designed by:
Japan International Cooperation
Agency (JICA)
JICA Study Team:
Joint Venture of
Pacific Consultants International and
Yamasa Sekkei Inc.
Subcontracted Local Consultant:
TBAH Consultants
Architects, Engineers


DATE JUNE - 10 / 2000

Tourist Trails
Drawing Title:
Plazas: Ain 2
Existing Building Elevation

Scale: 1:100
Drawing No.: SD.APS-02

Note:
This detailed design has been executed by a team
of consultants as shown below in accordance with
the agreement between Japan International
Cooperation Agency (JICA) and JICA Study
Team.
The copyright of this drawing rests with JICA.
ALL MEASUREMENTS ARE IN CENTIMETERS.
DO NOT SCALE FROM DRAWING



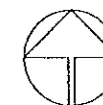
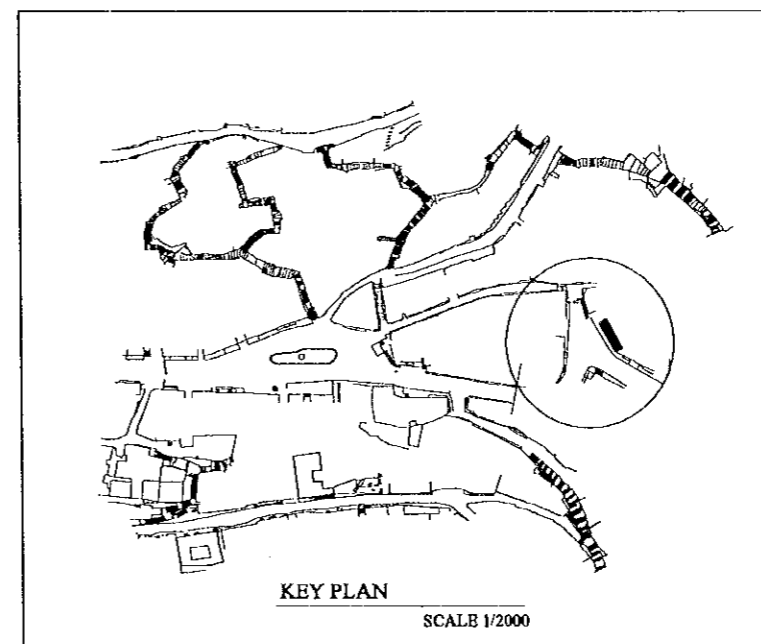
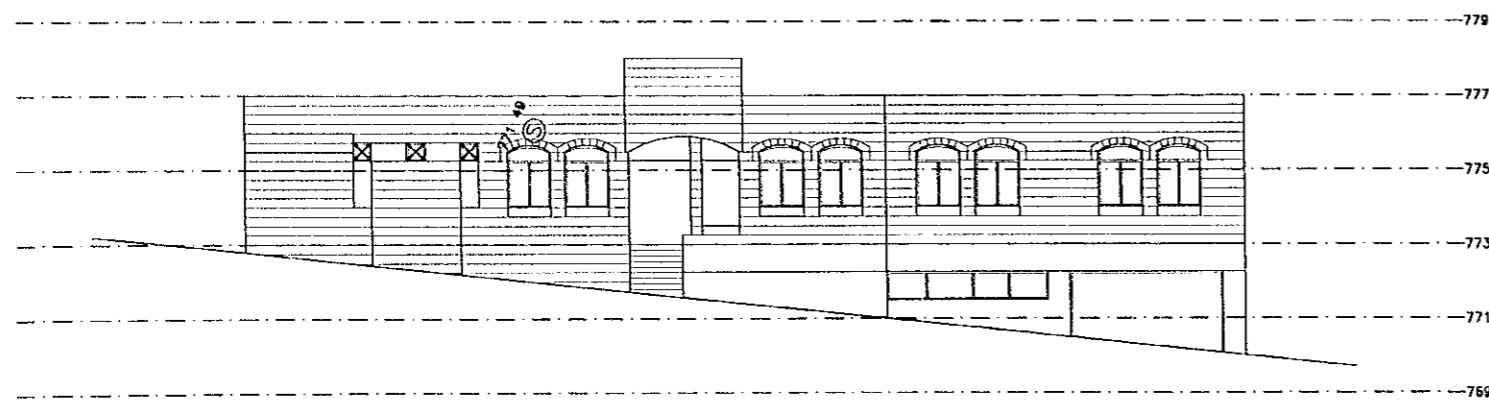
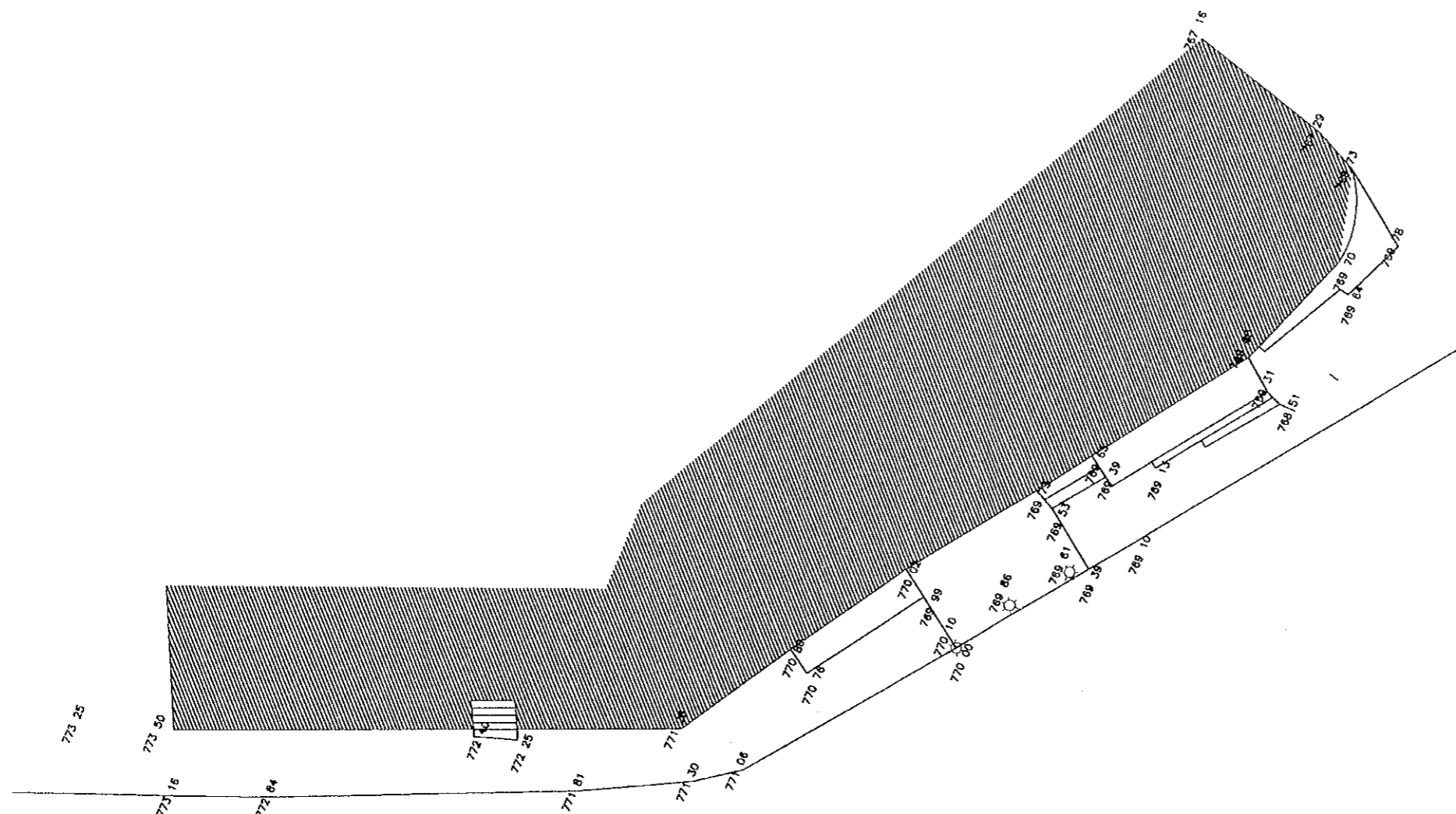
Designed by:
Japan International Cooperation
Agency (JICA)
JICA Study Team:
Joint Venture of
Pacific Consultants International and
Yamasita Sekkel Inc.
Subcontracted Local Consultant:
TIBAH Consultants
Architects, Engineers

DATE JUNE - 10 / 2000

Tourist Trails
Drawing Title:
Plazas: Ain 3
Existing Building Elevation

Scale: 1:100
Drawing No.: SD.APS-03

Nota:
This detailed design has been executed by a team
of consultants as shown below in accordance with
the agreement between Japan International
Cooperation Agency (JICA) and JICA Study
Team.
The copyright of this drawing rests with JICA.
ALL MEASUREMENTS ARE IN CENTIMETERS.
• DO NOT SCALE FROM DRAWING



Designed by:
Japan International Cooperation
Agency (JICA)

JICA Study Team:
Joint Venture of
Pacific Consultants International and
Yamamoto Sekkei Inc.

Subcontracted Local Consultant:
TIBAH Consultants
Architects, Engineers

DATE | JUNE - 10 / 2000

Tourist Trails
Drawing Title:
Plazas:Baladieh 1
Existing Building Elevation

Scale: | Drawing No.:
1:100 | SD.APS-04

Tourism Sector Development Project
in the Hashemite Kingdom of Jordan

The Government of
the Hashemite Kingdom of Jordan
The Ministry of Tourism and Antiquities
The Ministry of Planning

Sub-Project:

Historic Old Salt Development

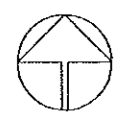
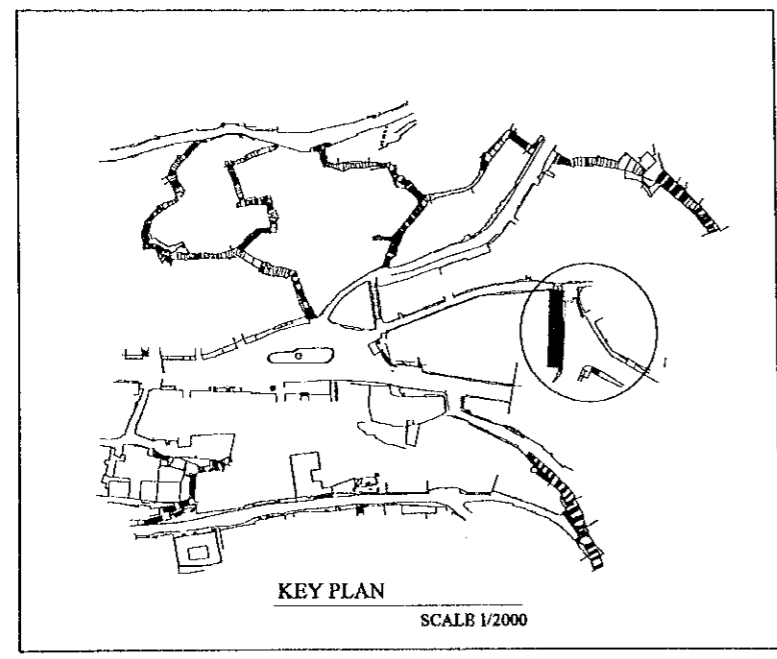
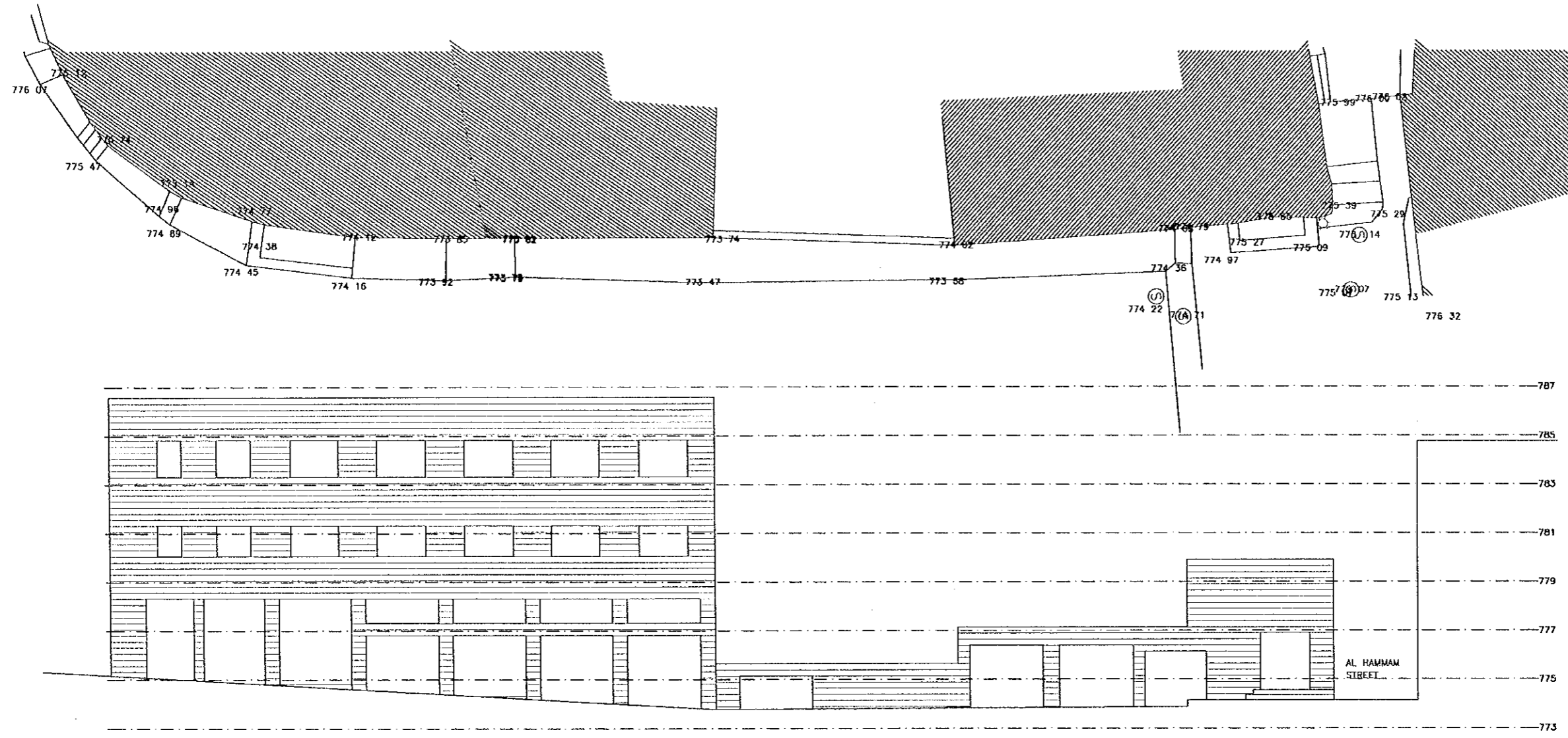
Note:

This detailed design has been executed by a team of consultants as shown below in accordance with the agreement between Japan International Cooperation Agency (JICA) and JICA Study Team.

The copyright of this drawing rests with JICA.

ALL MEASUREMENTS ARE IN CENTIMETERS.

DO NOT SCALE FROM DRAWING



Designed by:

Japan International Cooperation Agency (JICA)

JICA Study Team:

Joint Venture of
Pacific Consultants International and
Yamasita Sekkei Inc.

Subcontracted Local Consultant:

TBAH Consultants
Architects, Engineers



DATE	JUNE - 10 / 2000
------	------------------

Tourist Trails

Drawing Title:

Plazas: Baladieh 2
Existing Building Elevation

Scale:
1:100

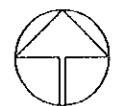
Drawing No.:
SD.APS-05

Tourism Sector Development Project
in the Hashemite Kingdom of Jordan

The Government of
the Hashemite Kingdom of Jordan
The Ministry of Tourism and Antiquities
The Ministry of Planning

Sub-Project:
Historic Old Salt Development

Note:
This detailed design has been executed by a team
of consultants as shown below in accordance with
the agreement between Japan International
Cooperation Agency (JICA) and JICA Study
Team.
The copyright of this drawing rests with JICA.
ALL MEASUREMENTS ARE IN CENTIMETERS.
• DO NOT SCALE FROM DRAWING



Designed by:
Japan International Cooperation
Agency (JICA)
JICA Study Team:
Joint Venture of
Pacific Consultants International and
Yamashita Sekkei Inc.

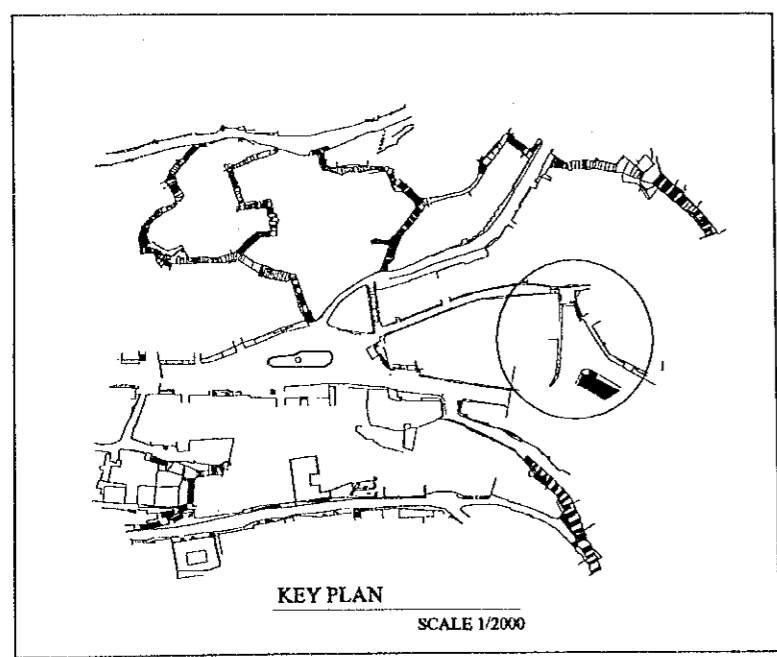
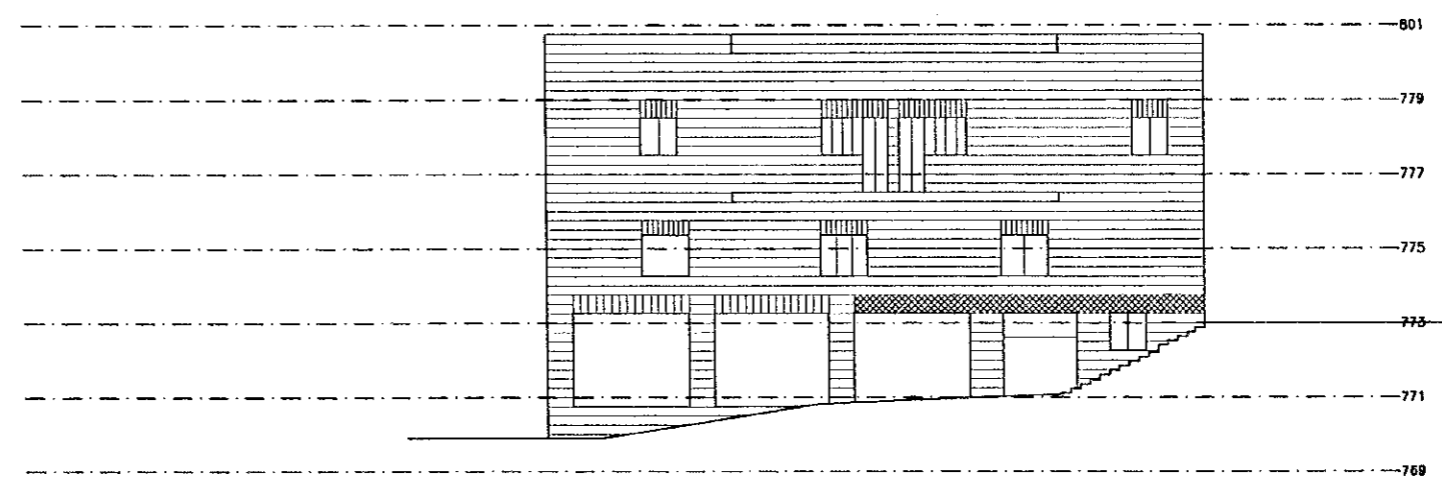
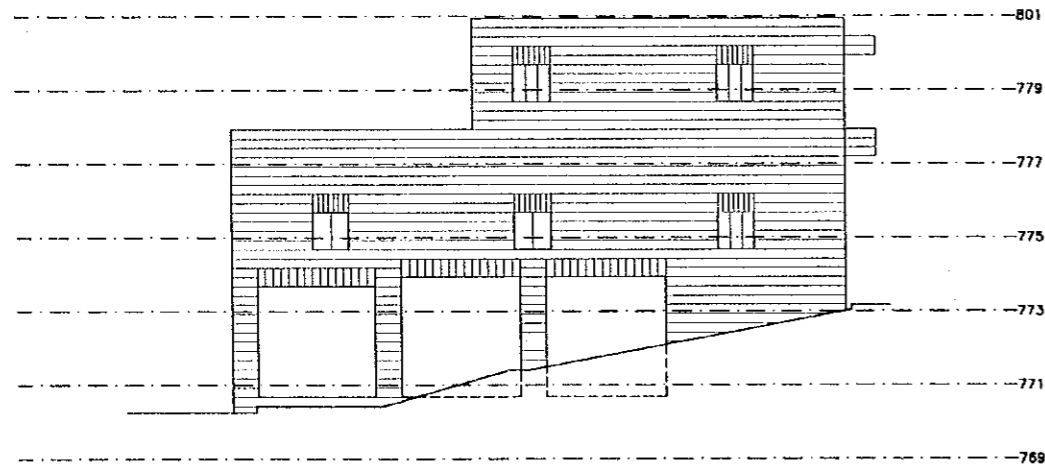
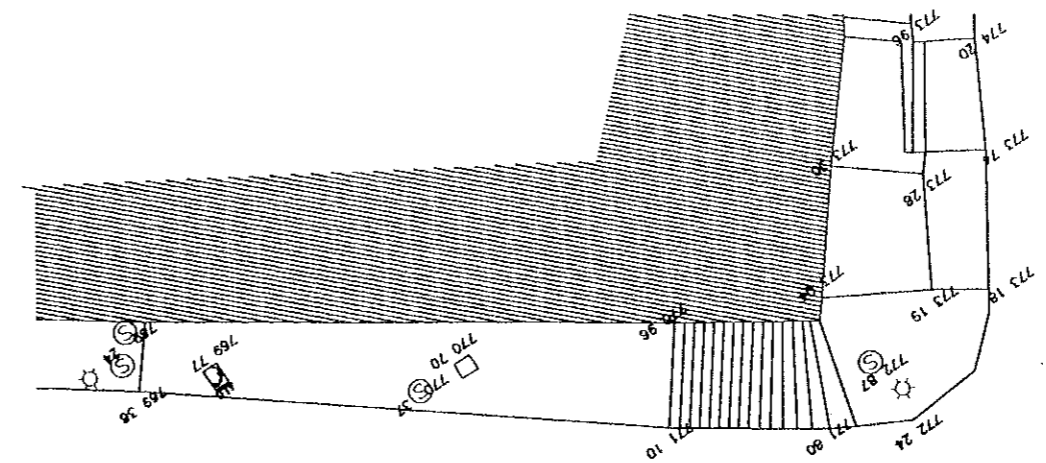
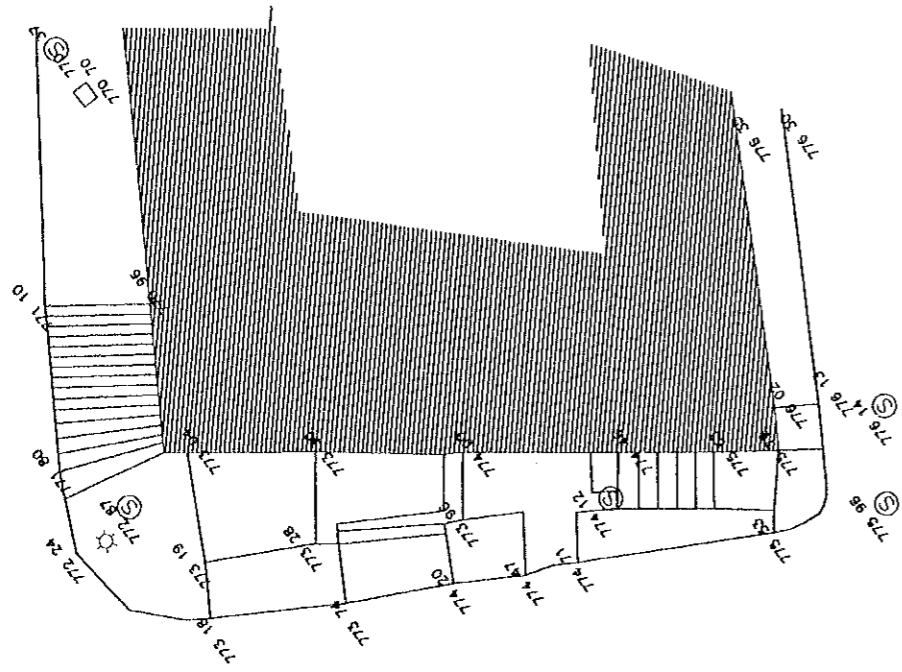
Subcontracted Local Consultant:
TIBAH Consultants
Architects, Engineers

DATE | JUNE - 10 / 2000

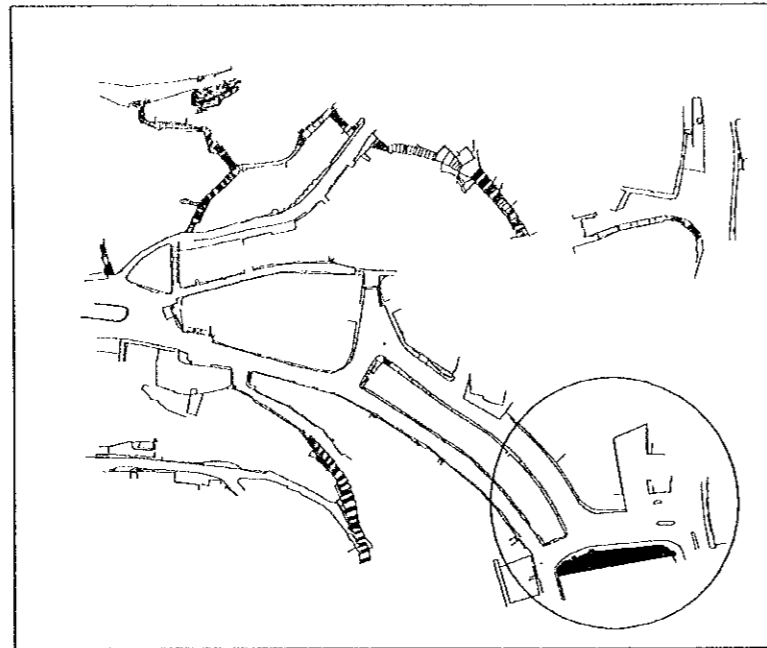
Tourist Trails

Drawing Title:
Plazas: Baladieh 3
Existing Building Elevation

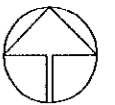
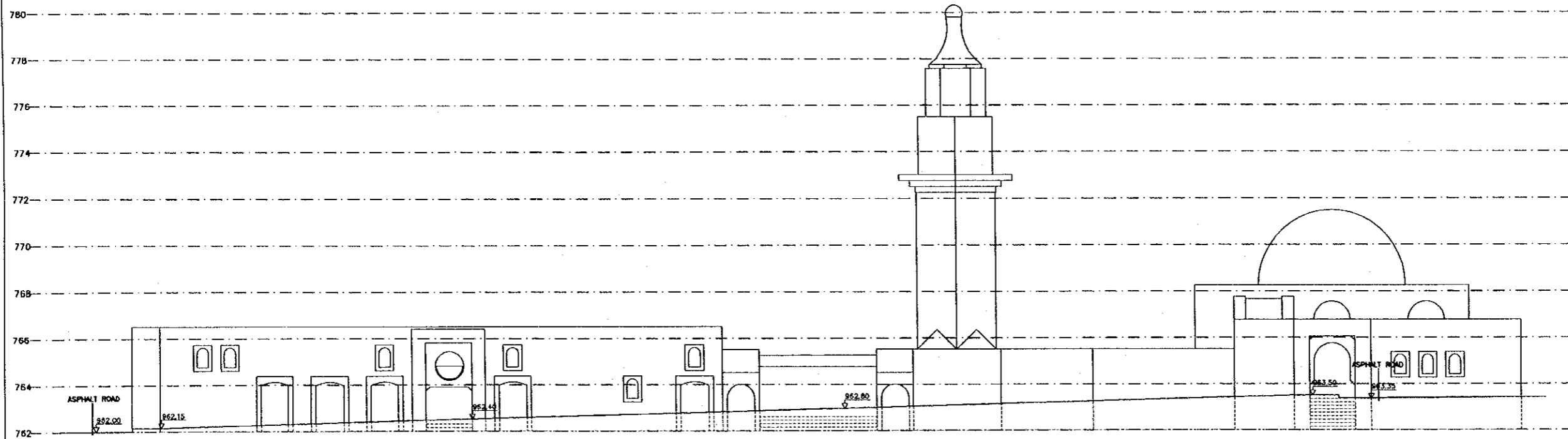
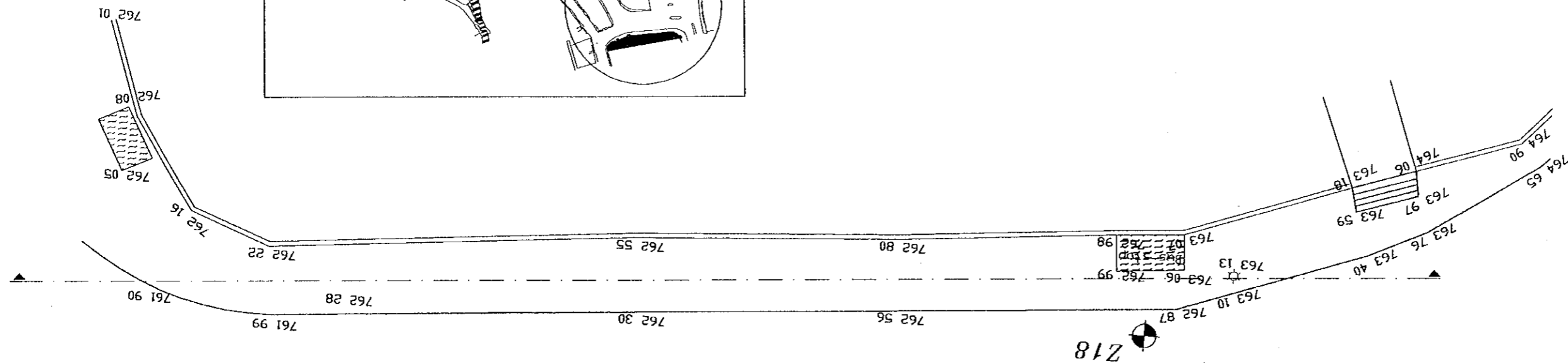
Scale: | Drawing No.:
1:100 | SD.APS-06




Note:
This detailed design has been executed by a team
of consultants as shown below in accordance with
the agreement between Japan International
Cooperation Agency (JICA) and JICA Study
Team.
The copyright of this drawing rests with JICA.
ALL MEASUREMENTS ARE IN CENTIMETERS.
• DO NOT SCALE FROM DRAWING



KEY PLAN
SCALE 1/2000



Designed by:
Japan International Cooperation
Agency (JICA)
JICA Study Team:
Joint Venture of
Pacific Consultants International and
Yamasa Sekkel Inc.

Subcontracted Local Consultant:
TIBAH Consultants
Architects, Engineers


DATE | JUNE - 10 / 2000

Tourist Trails

Drawing Title:
Plazas: Maidan 1
Existing Building Elevation

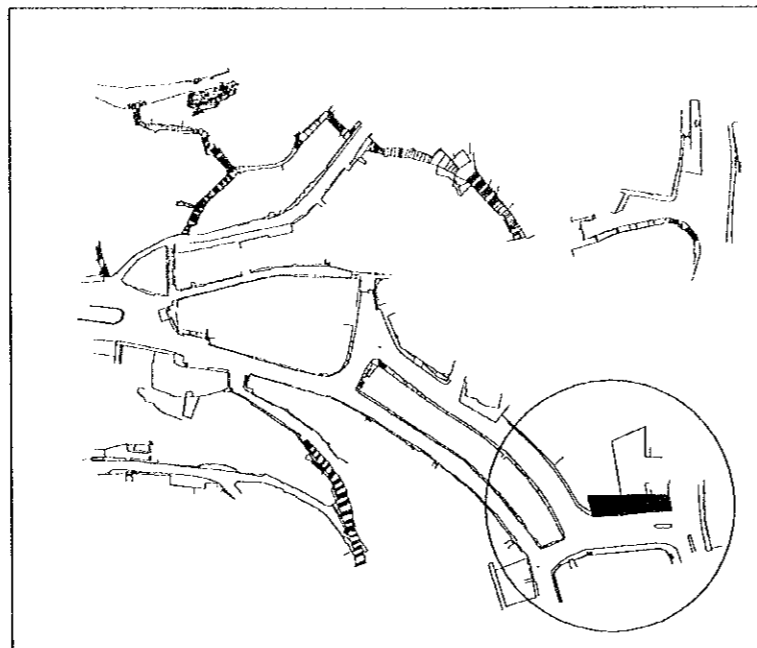
Scale: | Drawing No.:
1:100 | SD.APS-07

Tourism Sector Development Project
in the Hashemite Kingdom of Jordan

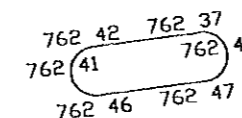
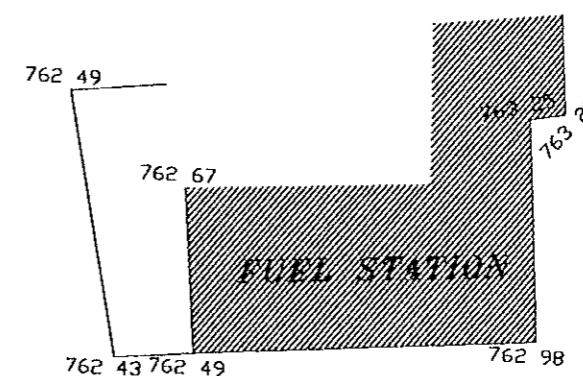
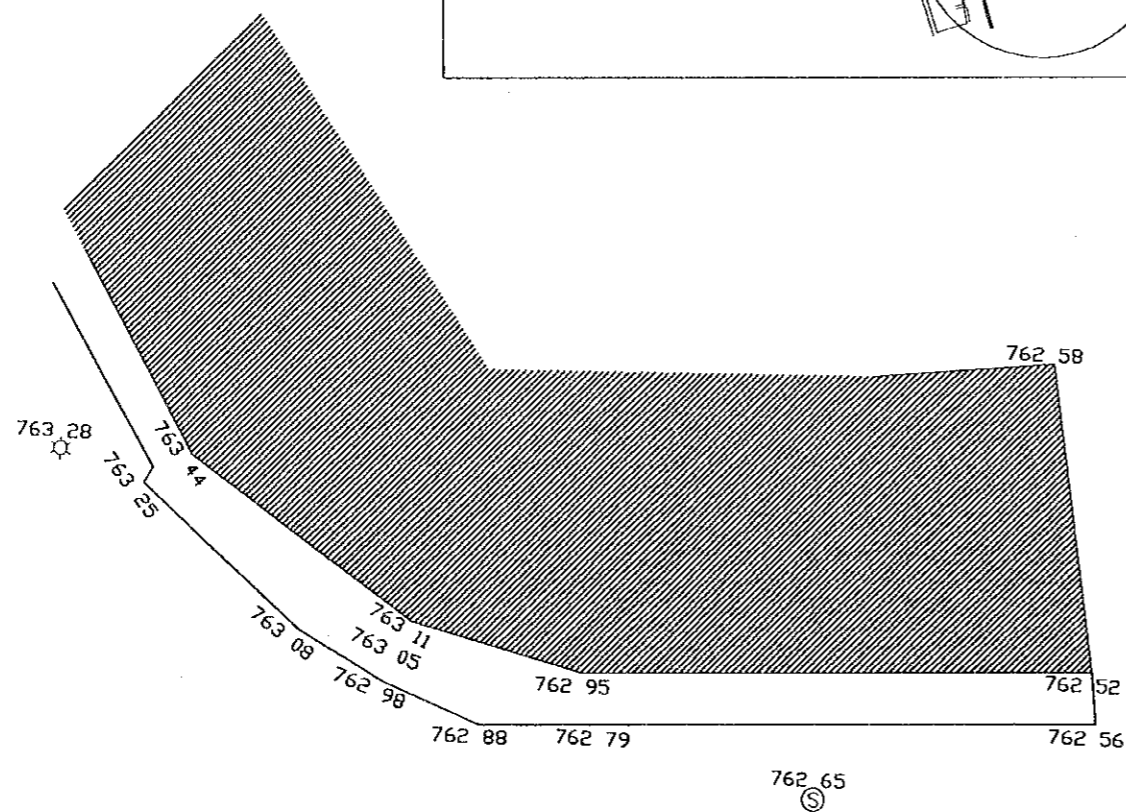
The Government of
the Hashemite Kingdom of Jordan
The Ministry of Tourism and Antiquities
The Ministry of Planning

Sub-Project:
Historic Old Salt Development

Note:
This detailed design has been executed by a team
of consultants as shown below in accordance with
the agreement between Japan International
Cooperation Agency (JICA) and JICA Study
Team.
The copyright of this drawing rests with JICA.
ALL MEASUREMENTS ARE IN CENTIMETERS.
• DO NOT SCALE FROM DRAWING



KEY PLAN
SCALE 1/2000



Designed by:
Japan International Cooperation
Agency (JICA)
JICA Study Team:
Joint Venture of
Pacific Consultants International and
Yamasita Sekkei Inc.

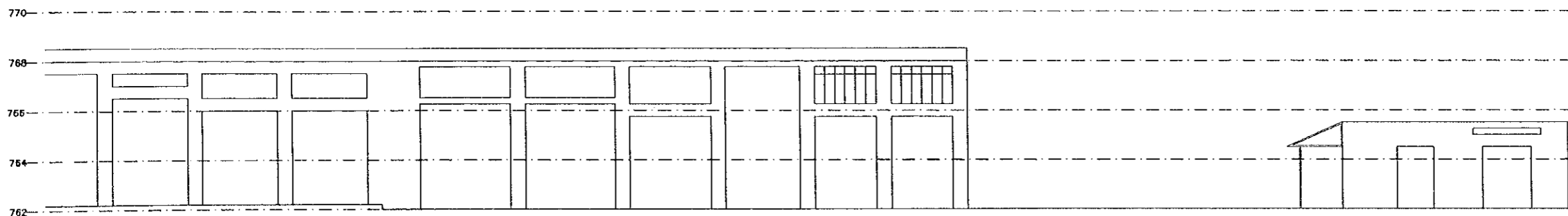
Subcontracted Local Consultant:
TIBAH Consultants
Architects, Engineers

DATE: JUNE - 10 / 2000

Tourist Trails

Drawing Title:
Plazas: Maidan 2
Existing Building Elevation

Scale: 1:100
Drawing No.: SD.APS-08

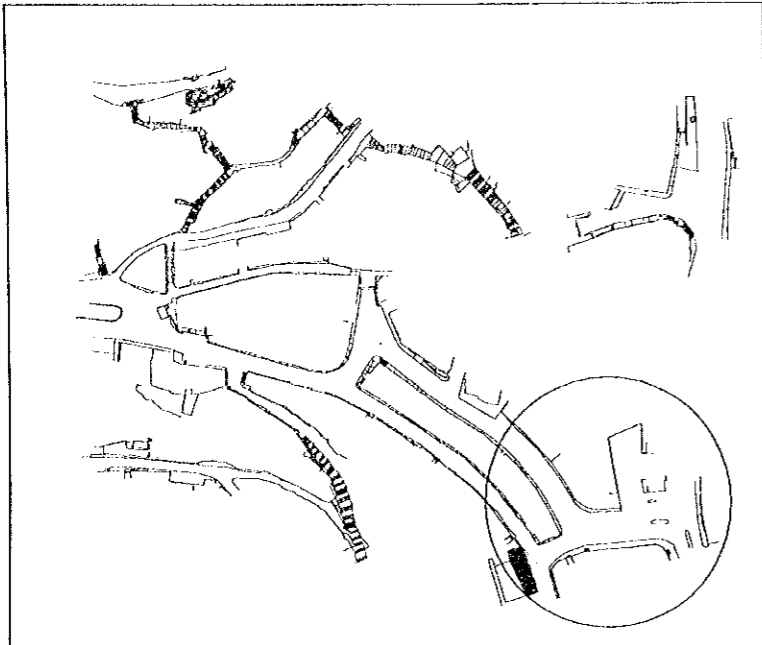


Tourism Sector Development Project
in the Hashemite Kingdom of Jordan

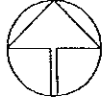
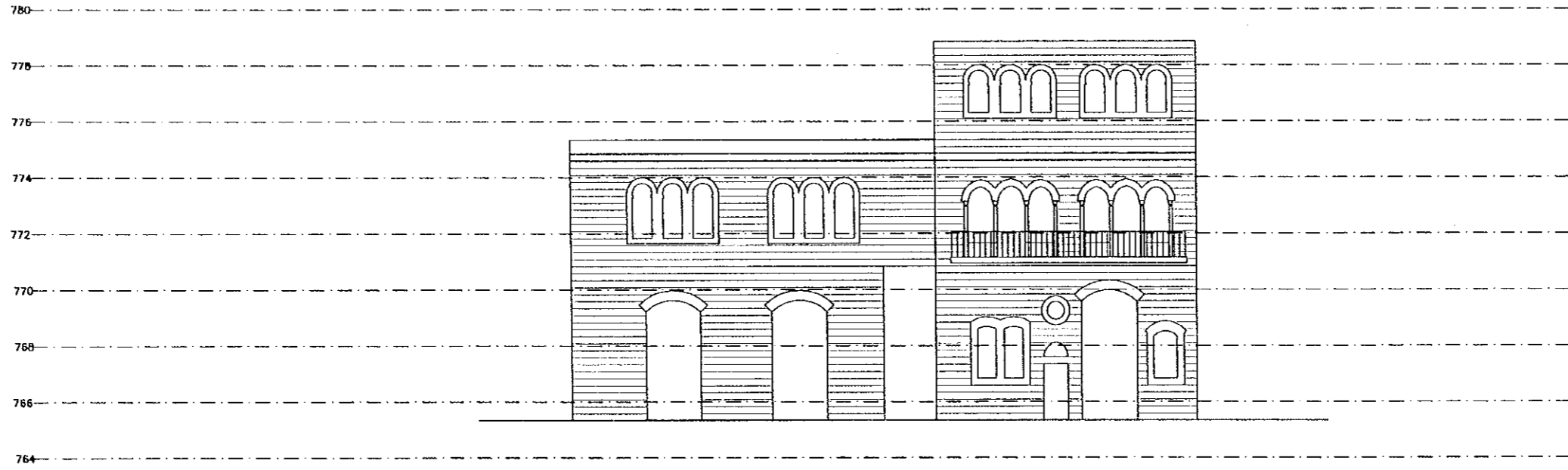
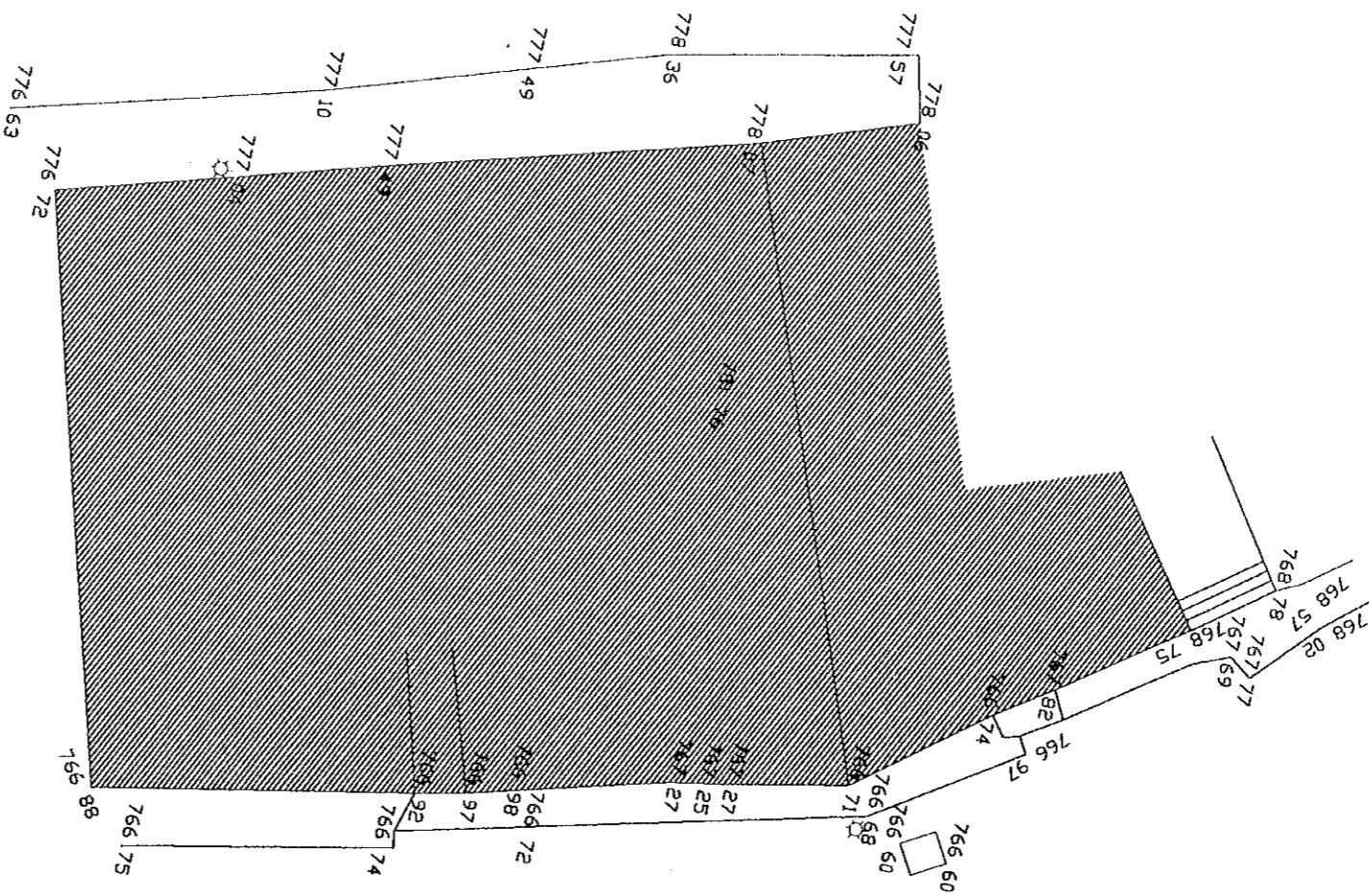
The Government of
the Hashemite Kingdom of Jordan
The Ministry of Tourism and Antiquities
The Ministry of Planning

Sub-Project:
Historic Old Salt Development

Note:
This detailed design has been executed by a team
of consultants as shown below in accordance with
the agreement between Japan International
Cooperation Agency (JICA) and JICA Study
Team.
The copyright of this drawing rests with JICA.
ALL MEASUREMENTS ARE IN CENTIMETERS.
• DO NOT SCALE FROM DRAWING



KEY PLAN
SCALE 1/2000



Designed by:
Japan International Cooperation
Agency (JICA)
JICA Study Team:
Joint Venture of
Pacific Consultants International and
Yamasita Sekkei Inc.

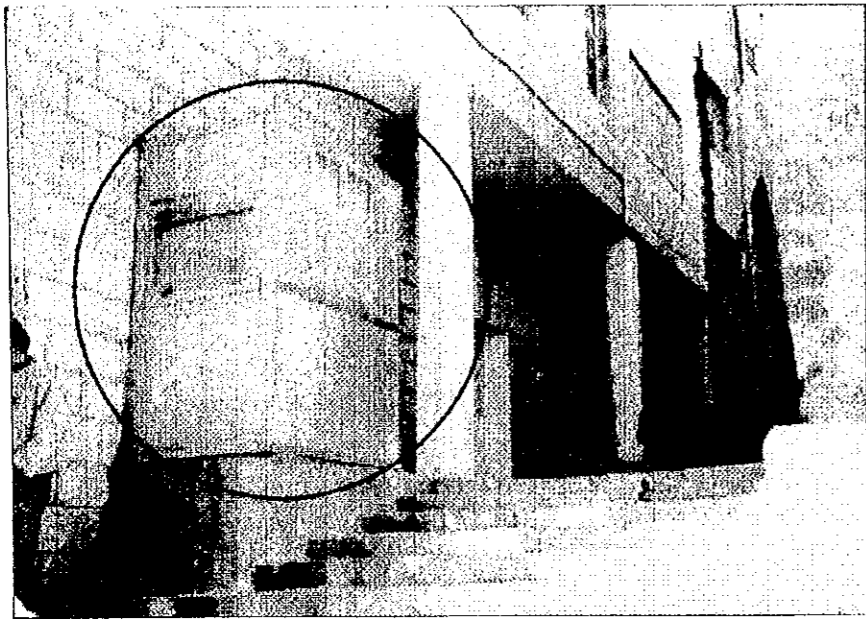
Subcontracted Local Consultant:
TBAH Consultants
Architects, Engineers

DATE | JUNE - 10 / 2000

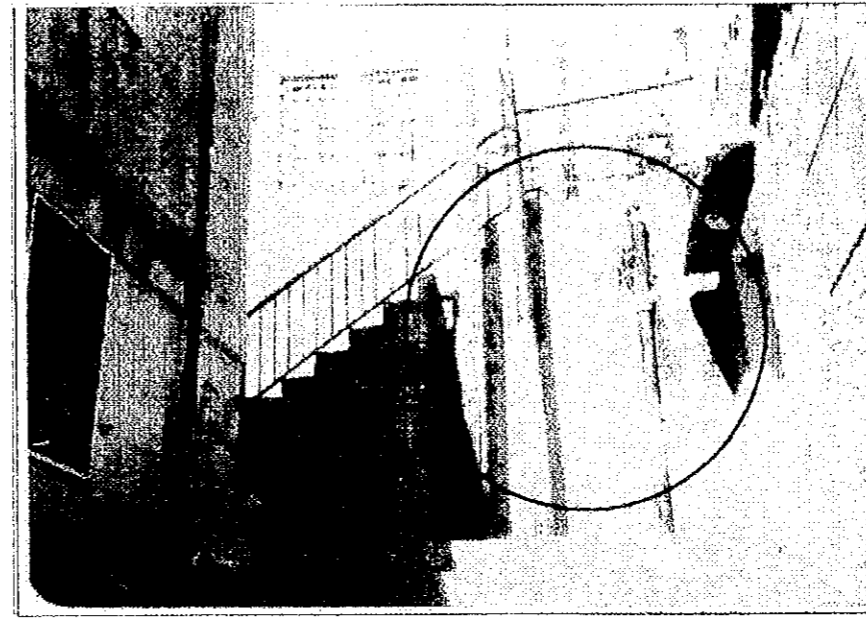
Tourist Trails
Drawing Title:
Plazas: Maidan 3
Existing Building Elevation

Scale: 1:100 | Drawing No.: SD.APS-09

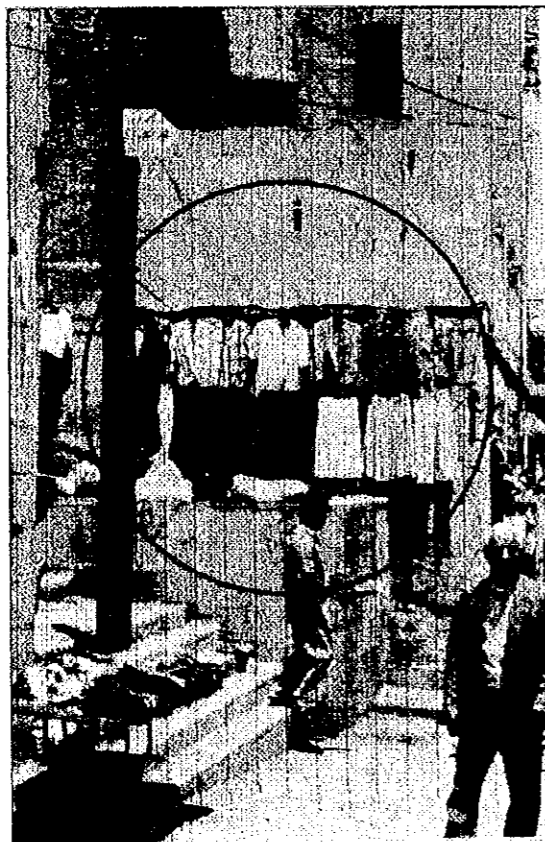
Note:
This detailed design has been executed by a team of consultants as shown below in accordance with the agreement between Japan International Cooperation Agency (JICA) and JICA Study Team.
The copyright of this drawing rests with JICA.
ALL MEASUREMENTS ARE IN CENTIMETERS.
DO NOT SCALE FROM DRAWINGS.



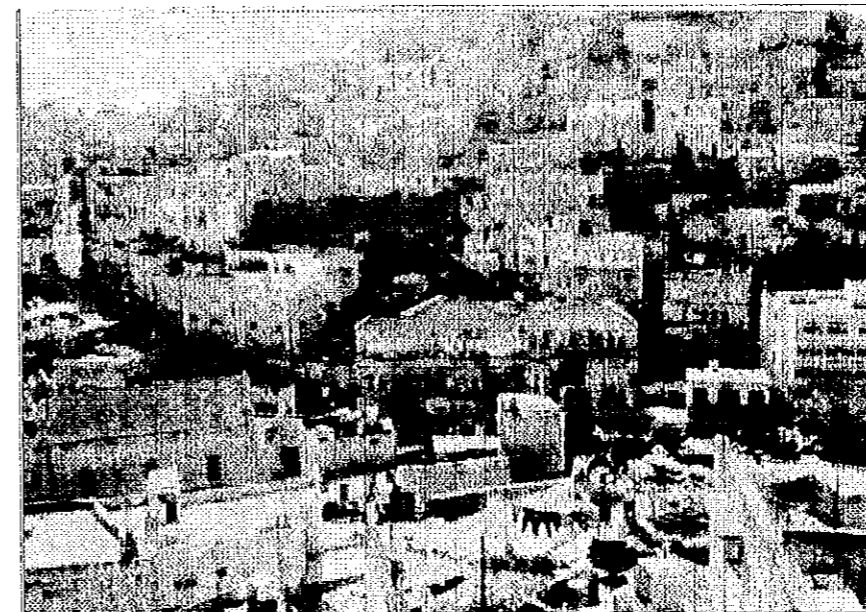
REMOVE THE PREFABRICATED HUT



PAINT THE SEWAGE AND ELECTRICAL PIPES



PREVENT THE SHOPS OWNER FROM SHOW THEIR GOODS ON THE WALL



KEEP THE ROOF OF THE BUILDING CLEAN

Designed by:
Japan International Cooperation Agency (JICA)

JICA Study Team:
Joint Venture of
Pacific Consultants International and
Yamasita Sekkei Inc.

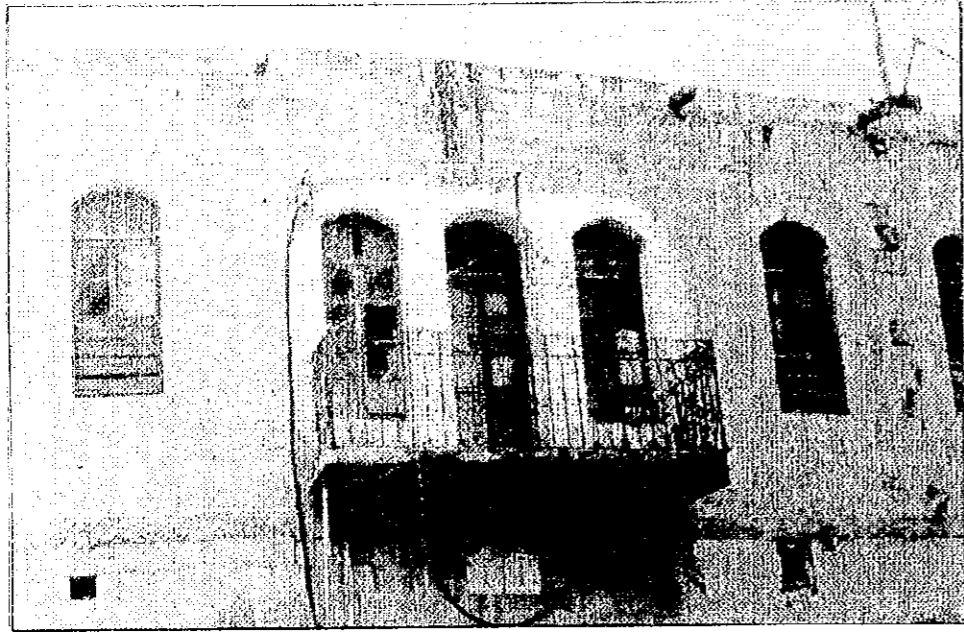
Subcontracted Local Consultant:
TIBAH Consultants
Architects, Engineers

Handwritten signature and stamp of the local consultant.

DATE: JUNE-10 / 2000

Drawing Title:
**RECOMMENDATION FOR
DEVELOPMENT TRAILS**

Scale: Drawing No.:
SD-RD-01



PREVENT PICTURES AND REMOVE ELECTRIC WIRES



PREVENT PEOPLE FROM WRITING ON WALLS



FREE THE HOUSE ENTRANCE



KEEP THE BIG SHADE TREE AND USE IT IN THE PROJECT

Tourism Sector Development Project
in the Hashemite Kingdom of Jordan

The Government of
the Hashemite Kingdom of Jordan
The Ministry of Tourism and Antiquities
The Ministry of Planning

Sub-Project:
Historic Old Salt Development

Note:
This detailed design has been executed by a team
of consultants as shown below in accordance with
the agreement between Japan International
Cooperation Agency (JICA) and JICA Study
Team.
The copyright of this drawing rests with JICA.
ALL MEASUREMENTS ARE IN CENTIMETERS.
DO NOT SCALE FROM DRAWINGS.

Designed by:
Japan International Cooperation
Agency (JICA)

JICA Study Team:
Joint Venture of
Pacific Consultants International and
Yamasita Sekkei Inc.

Subcontracted Local Consultant:
TIBAH Consultants
Architects, Engineers

٢٠٠٠ ١٠ ١٠
٢٠٠٠ ١٠ ١٠

DATE JUNE- 10 / 2000

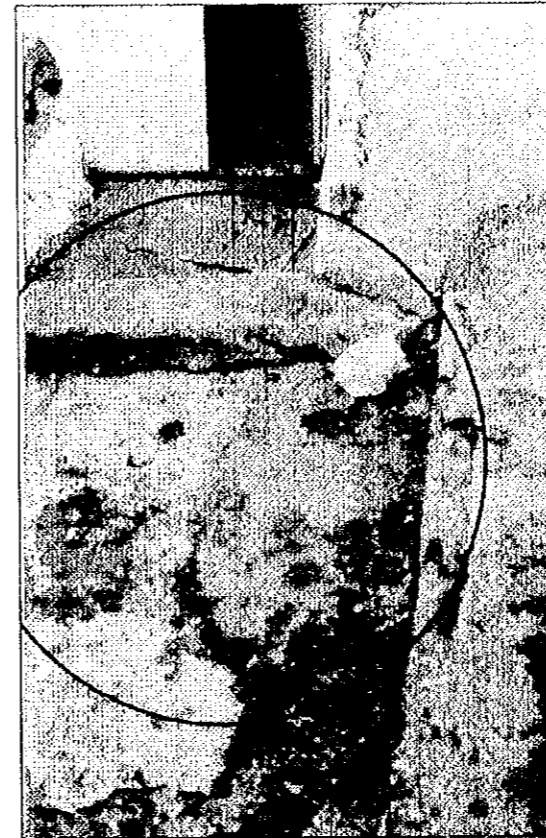
Tourist Trails
Drawing Title:
RECOMMENDATION FOR
DEVELOPMENT TRAILS

Scale: Drawing No.:
SD-RD-02

Note:
This detailed design has been executed by a team of consultants as shown below in accordance with the agreement between Japan International Cooperation Agency (JICA) and JICA Study Team.
The copyright of this drawing rests with JICA.
ALL MEASUREMENTS ARE IN CENTIMETERS.
DO NOT SCALE FROM DRAWINGS.



PROVIDE TRASH CONTAINERS



STUDY AND REPAIR DRAINAGE IN THE PUBLIC SPACES



CLEAN THE STONE AND MAINTAIN THE ENTRANCE DOOR & REGLAZE THE WINDOWS. REMOVE EXTRA SOIL. EMPHISISE ON THE HISTORICAL ELEMENT IN THE SITE (TREE, DOOR, ... ETC.)



USE SIMILAR TREATMENT FOR SOFT LANDSCAPING

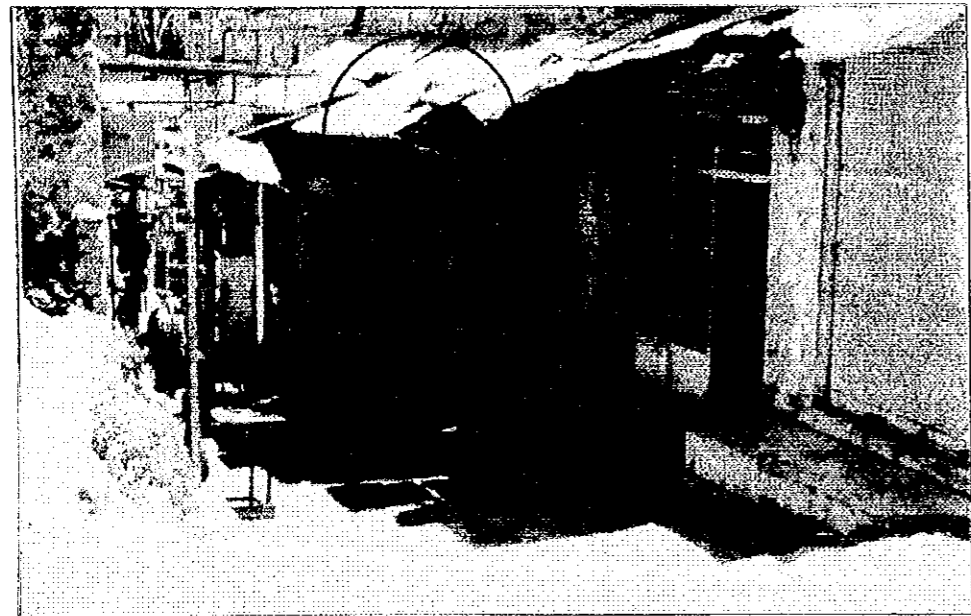
Designed by:
Japan International Cooperation Agency (JICA)
JICA Study Team:
Joint Venture of
Pacific Consultants International and
Yamasita Sekkei Inc.

Subcontracted Local Consultant:
TIBAH Consultants
Architects, Engineers

DATE: JUNE- 10 / 2000

Tourist Trails
Drawing Title:
**RECOMMENDATION FOR
DEVELOPMENT TRAILS**

Scale: Drawing No.:
SD-RD-03



REPLACE THE STEEL PERGOLAS WITH A SUITABLE TRADITIONAL DESIGN



REPAIR AND PAINT SHOPS SHUTTER STEEL DOORS



MAINTAIN TRADITIONAL TYPICAL WOOD SHOP DOORS



PAINT THE CONCRETE WALL WITH SUITABLE COLOR AND REMOVE ELECTRIC WIRES

Tourism Sector Development Project
in the Hashemite Kingdom of Jordan

The Government of
the Hashemite Kingdom of Jordan
The Ministry of Tourism and Antiquities
The Ministry of Planning

Sub-Project:
Historic Old Salt Development

Note:
This detailed design has been executed by a team
of consultants as shown below in accordance with
the agreement between Japan International
Cooperation Agency (JICA) and JICA Study
Team.
The copyright of this drawing rests with JICA.
ALL MEASUREMENTS ARE IN CENTIMETERS.
DO NOT SCALE FROM DRAWINGS.

Designed by:
Japan International Cooperation
Agency (JICA)
JICA Study Team:
Joint Venture of
Pacific Consultants International and
Yamasita Sekkei Inc.

Subcontracted Local Consultant:
TIBAH Consultants
Architects, Engineers
General Architectural Consultant

DATE	JUNE- 10 / 2000
------	-----------------

Tourist Trails
Drawing Title:
**RECOMMENDATION FOR
DEVELOPMENT TRAILS**

Scale:	Drawing No.: SD-RD-04
--------	---------------------------------

JICA