

**(2) ABDALLAH A-SHAMAYLEH (2) & FALAH AL-MADADHAH**

**(A) FALAH AL-MADADHAH**

**(1) Features of Building**

The area of this building is 336 m2, composed of two floors, ground and first. The building is about 90 years old. The building is about 90 years old. The first floor cover is constructed of i beams and concrete and the second floor cover has the same composition but with weeds and mud. Concrete screed is applied on top.

**(2) Current condition and restoration measures.**

The building is in fair condition. Observation showed vertical cracks in full elevation height, stone buckled outward. At street level, the balcony is not stable. Reconstruction of the stone wall in the elevation is necessary. This shall be done in combination with the reinforced concrete wall consolidation as described above.


**(B) ABDALLAH AL-SHAMAYLEH (2)**

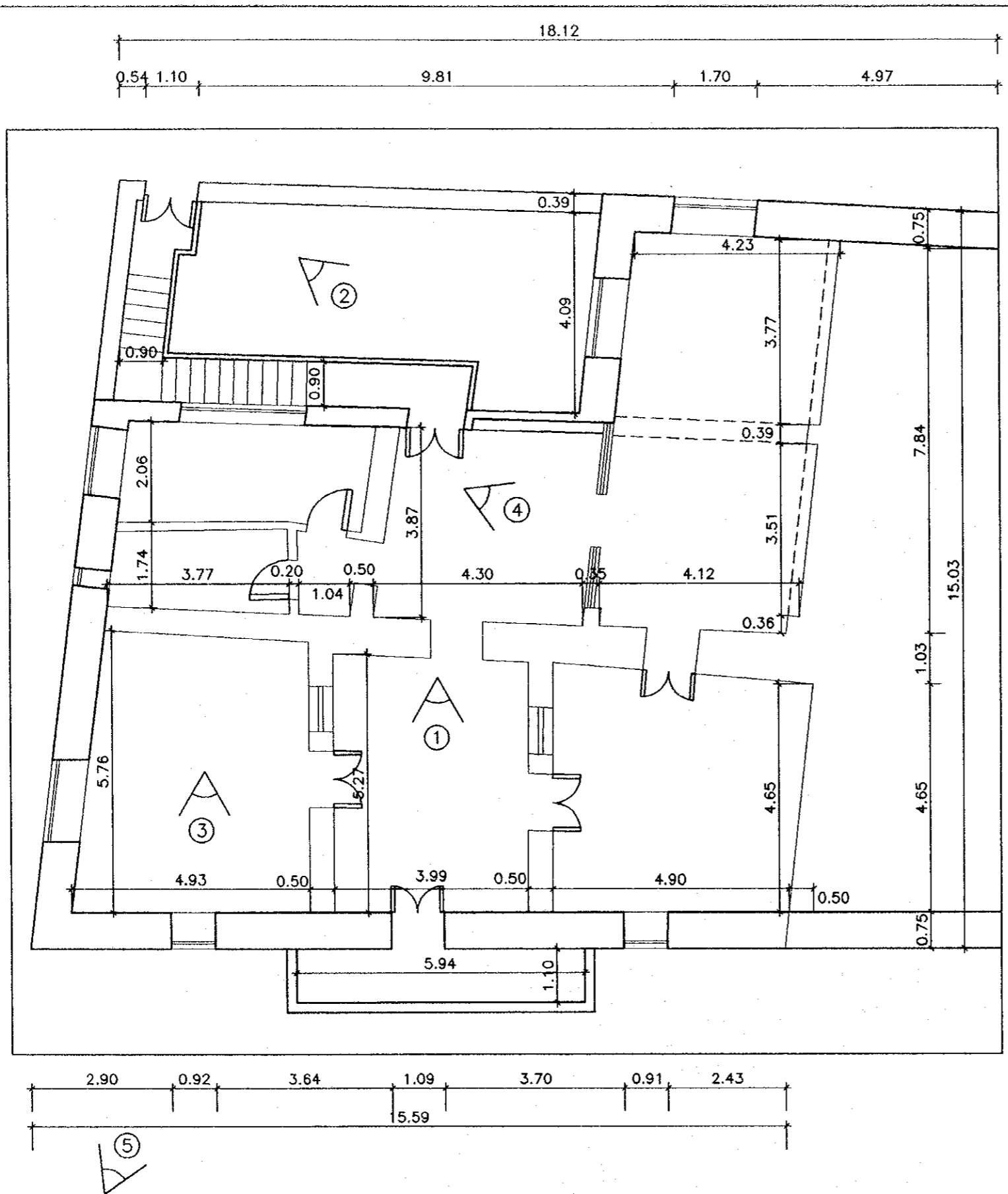
**(1) FEATURES OF BUILDING**

This is a building of 468 m2 area composed of two floors, ground and first. Building seems to have been built in the twenties. The construction is all of stone walls and i beam slabs with concrete fill between beams. No reinforcement is used.

**(2) Current condition and restoration measures.**

The building suffers from a diagonal crack. New pointing is required to cover cracks in rock.

Project: Tourism Sector Development Project in the Hashemite Kingdom of Jordan	
Executing Agency The Ministry of Tourism and Antiquities The Ministry of Planning	
SUB-PROJECT: Karak Tourism Development Project Tourist Street	
Note: This detailed design has been executed by a team of consultants as shown below in accordance with the agreement between Japan International Cooperation Agency (JICA) and JICA Study Team.  The copyright of this drawing rests with JICA .	
Designed by: Japan International Cooperation Agency (JICA)  JICA Study Team: Joint Venture of Pacific Consultants International and Yamasita Sekkei Inc.  Subcontracted Local Consultant:   Tel: 4612377 - Fax: 4612380 - AMMAN - JORDAN	
Drawing Title: <b>DETAILED BUILDING SURVEY</b>	
Scale: <b>N.T.S</b>	Drawing No.: <b>DCS-SH2 MD 0017</b>



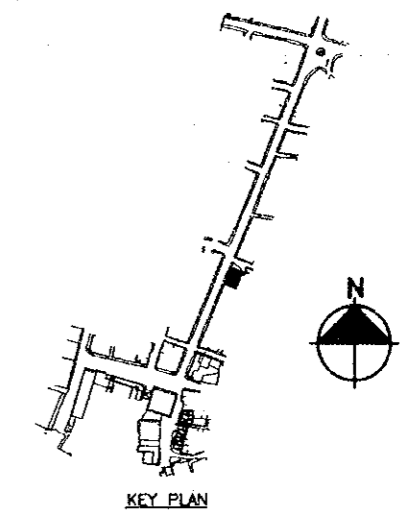
**PLAN**  
**AL-MADADHAH**

**Project:**  
Tourism Sector Development Project  
in the Hashemite Kingdom of Jordan

**Executing Agency**  
The Ministry of Tourism and Antiquities  
The Ministry of Planning

**SUB-PROJECT:**  
Karak Tourism Development Project  
Tourist Street

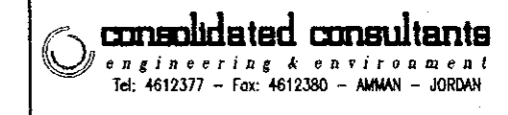
**Note:**  
This detailed design has been executed by a team of consultants as shown below in accordance with the agreement between Japan International Cooperation Agency (JICA) and JICA Study Team.  
The copyright of this drawing rests with JICA .



**Designed by:**  
Japan International Cooperation Agency (JICA)

**JICA Study Team:**  
Joint Venture of  
Pacific Consultants International and  
Yamasita Sekkei Inc.

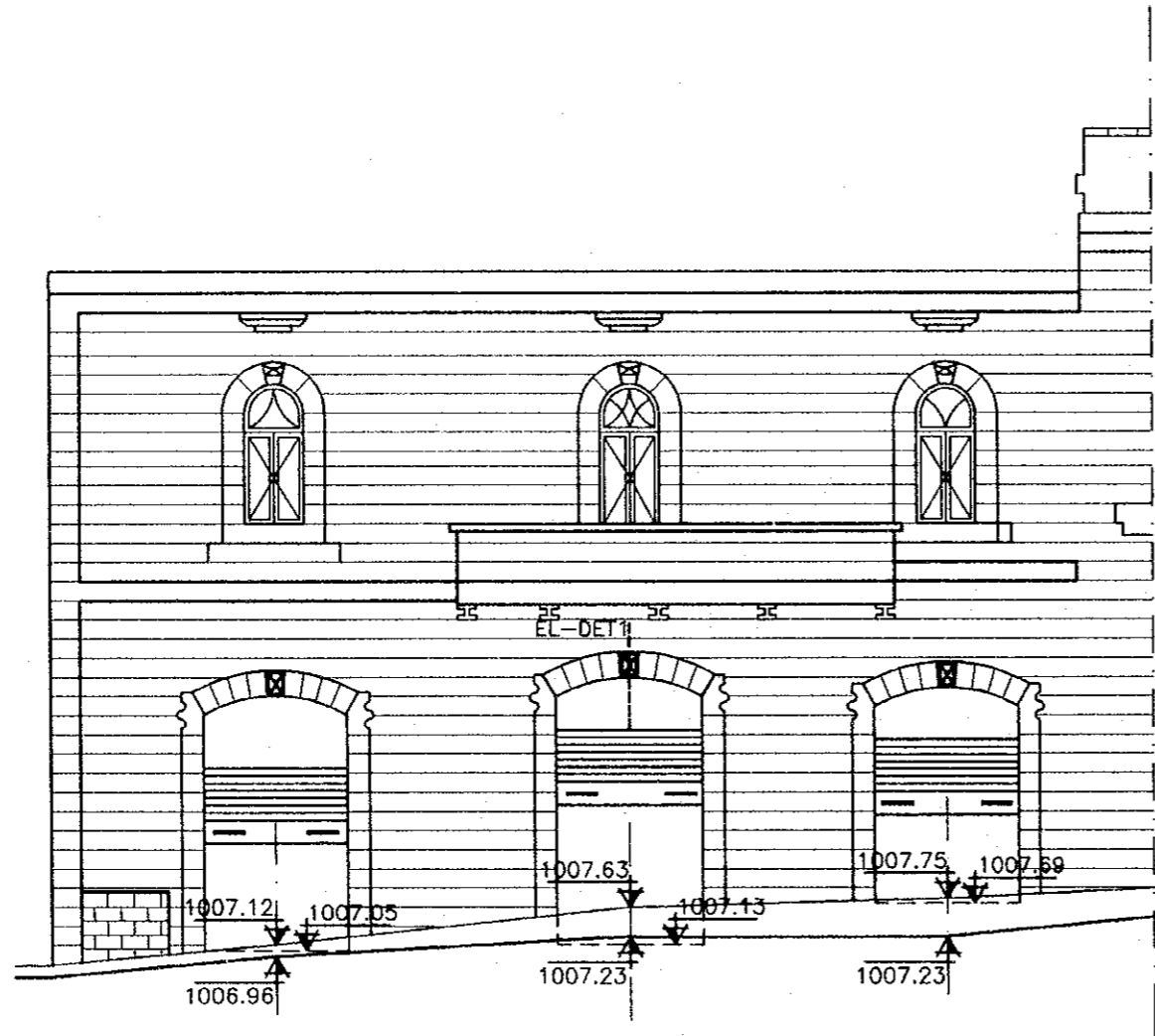
**Subcontracted Local Consultant:**



**DETAILED BUILDING SURVEY**  
Drawing Title:

Scale: **1/100** Drawing No.: **DB.S.-SH2.MD-001a**

*Lat*



*ELEV. (1)  
AL-MADADHAH*

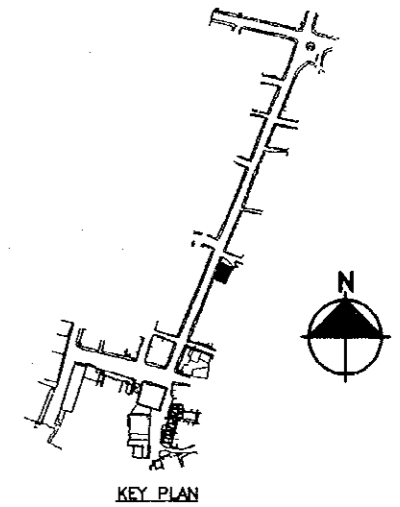
Project:  
Tourism Sector Development Project  
in the Hashemite Kingdom of Jordan

Executing Agency  
The Ministry of Tourism and Antiquities  
The Ministry of Planning

SUB-PROJECT:  
Karak Tourism Development Project  
Tourist Street

Note:  
This detailed design has been executed by  
a team of consultants as shown below in  
accordance with the agreement between  
Japan International Cooperation Agency  
(JICA) and JICA Study Team.

The copyright of this drawing rests with  
JICA .



Designed by:  
Japan International Cooperation  
Agency (JICA)

JICA Study Team:  
Joint Venture of  
Pacific Consultants International and  
Yamasita Sekkei Inc.

Subcontracted Local Consultant:

**consolidated consultants**  
engineering & environment  
Tel: 4612377 - Fax: 4612380 - AMMAN - JORDAN

**DETAILED BUILDING SURVEY**

Drawing Title:

Scale: 1/100

Drawing No.: DB.S.-SH2.MD-002a

208  
73  
100

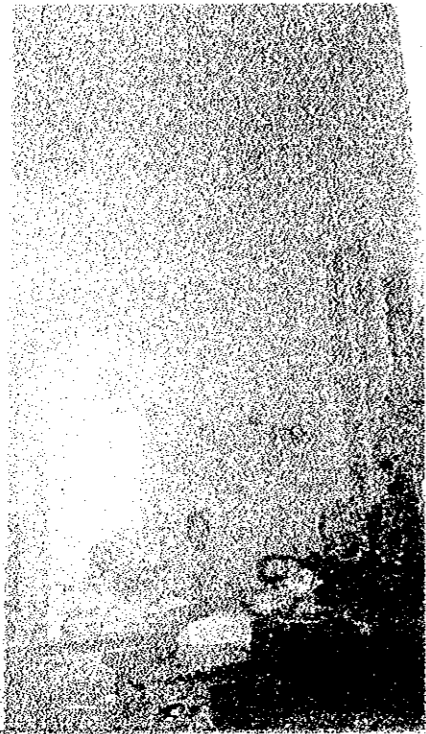


PHOTO NO. (1)

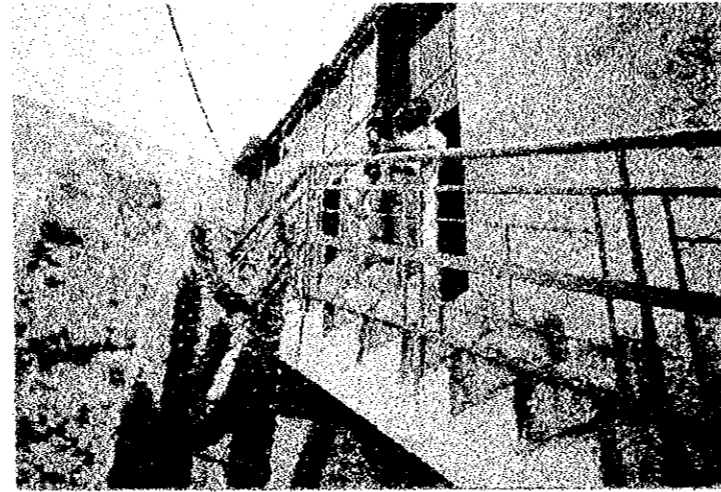


PHOTO NO. (2)

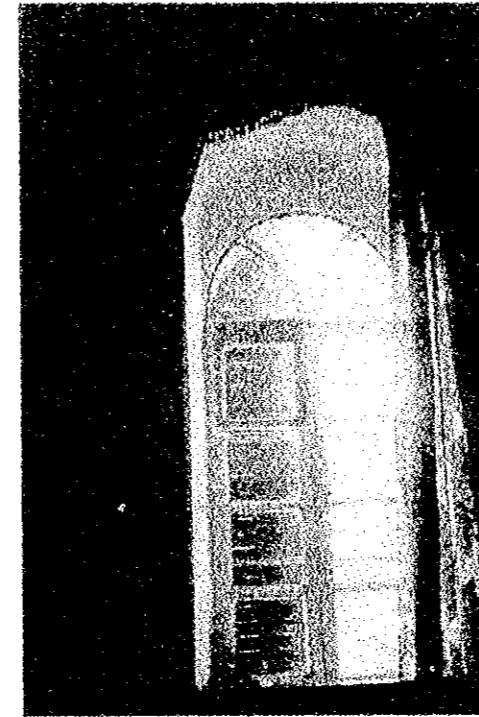


PHOTO NO. (3)



PHOTO NO. (4)

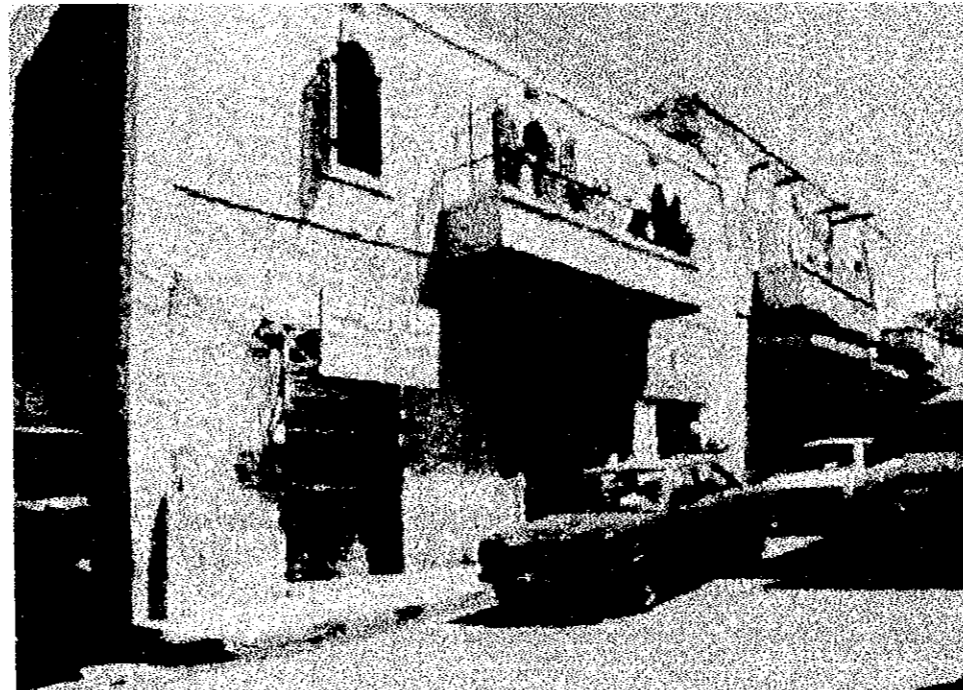


PHOTO NO. (5)

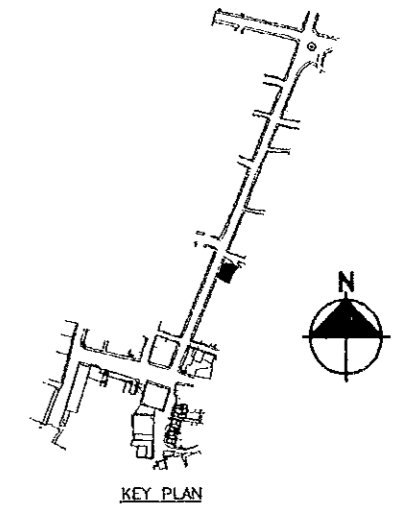
Project:  
Tourism Sector Development Project  
in the Hashemite Kingdom of Jordan

Executing Agency  
The Ministry of Tourism and Antiquities  
The Ministry of Planning

SUB-PROJECT:  
Karak Tourism Development Project  
Tourist Street

Note:  
This detailed design has been executed by  
a team of consultants as shown below in  
accordance with the agreement between  
Japan International Cooperation Agency  
(JICA) and JICA Study Team.

The copyright of this drawing rests with  
JICA .



Designed by:  
Japan International Cooperation  
Agency (JICA)

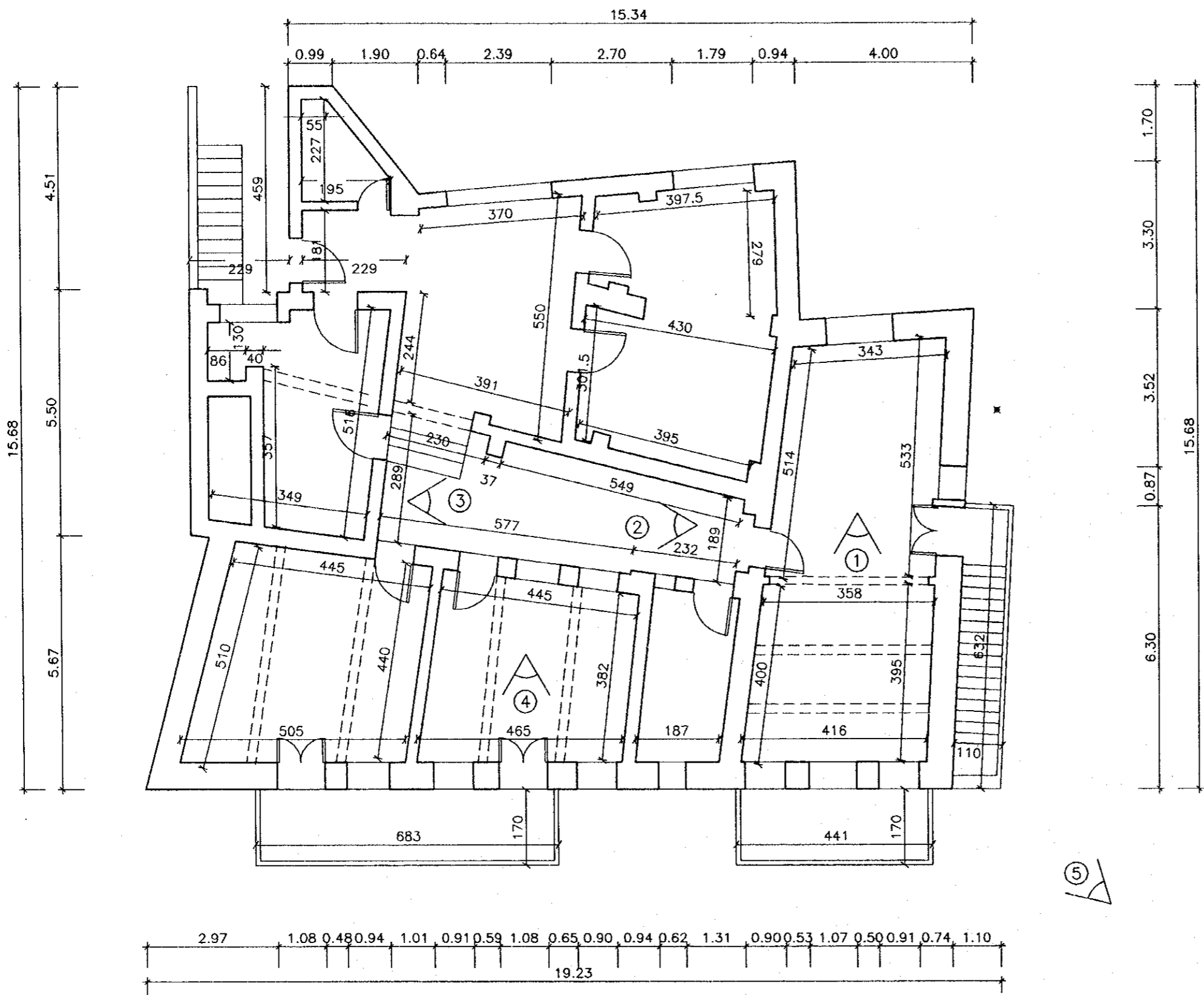
JICA Study Team:  
Joint Venture of  
Pacific Consultants International and  
Yamasita Sekkei Inc.

Subcontracted Local Consultant:

 **consolidated consultants**  
engineering & environment  
Tel: 4612377 - Fax: 4612380 - AMMAN - JORDAN

*DETAILED BUILDING SURVEY*  
Drawing Title:

Scale: **N.T.S.** Drawing No.: **DB.S-SH2.WD-002aP**



PLAN  
AL-SHAMAYLEH (2)

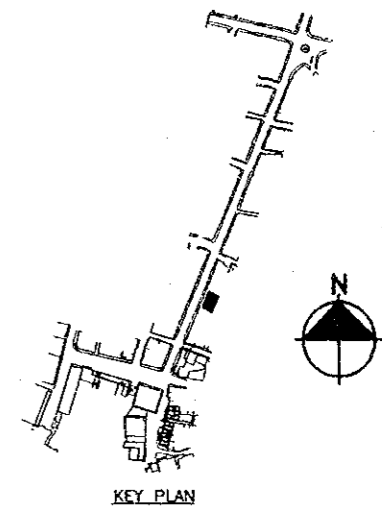
Project:  
Tourism Sector Development Project  
in the Hashemite Kingdom of Jordan

Executing Agency  
The Ministry of Tourism and Antiquities  
The Ministry of Planning

SUB-PROJECT:  
Karak Tourism Development Project  
Tourist Street

Note:  
This detailed design has been executed by a team of consultants as shown below in accordance with the agreement between Japan International Cooperation Agency (JICA) and JICA Study Team.

The copyright of this drawing rests with JICA .



Designed by:  
Japan International Cooperation Agency (JICA)

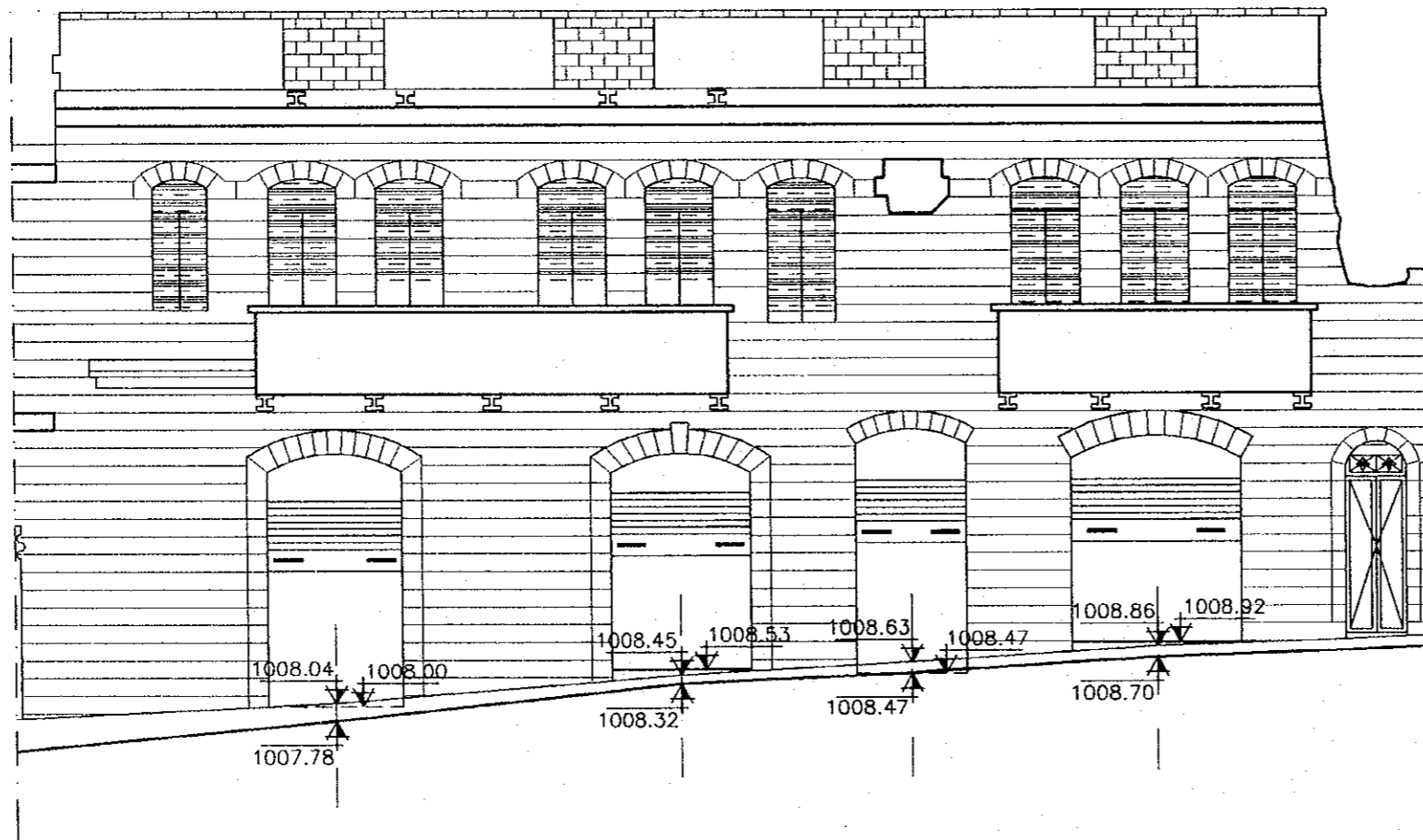
JICA Study Team:  
Joint Venture of  
Pacific Consultants International and  
Yamasita Sekkei Inc.

Subcontracted Local Consultant:



**DETAILED BUILDING SURVEY**  
Drawing Title:

Scale: 1/100      Drawing No.: DB.S-SH2,WD-0016



*ELEV. (2)*  
*AL- SHAMAYLEH (2)*

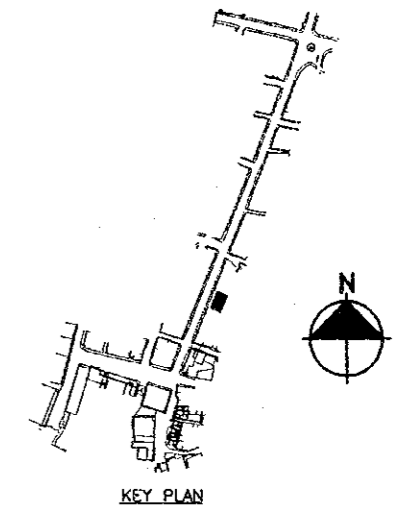
Project:  
Tourism Sector Development Project  
in the Hashemite Kingdom of Jordan

Executing Agency  
The Ministry of Tourism and Antiquities  
The Ministry of Planning

SUB-PROJECT:  
Karak Tourism Development Project  
Tourist Street

Note:  
This detailed design has been executed by a team of consultants as shown below in accordance with the agreement between Japan International Cooperation Agency (JICA) and JICA Study Team.

The copyright of this drawing rests with JICA .



Designed by:  
Japan International Cooperation Agency (JICA)

JICA Study Team:  
Joint Venture of  
Pacific Consultants International and  
Yamasita Sekkei Inc.

Subcontracted Local Consultant:

**consolidated consultants**  
engineering & environment  
Tel: 4612377 - Fax: 4612380 - AMMAN - JORDAN

*DETAILED BUILDING SURVEY*

Drawing Title:

Scale: 1/100

Drawing No.: DB.S-SH2.WD-0026

IR

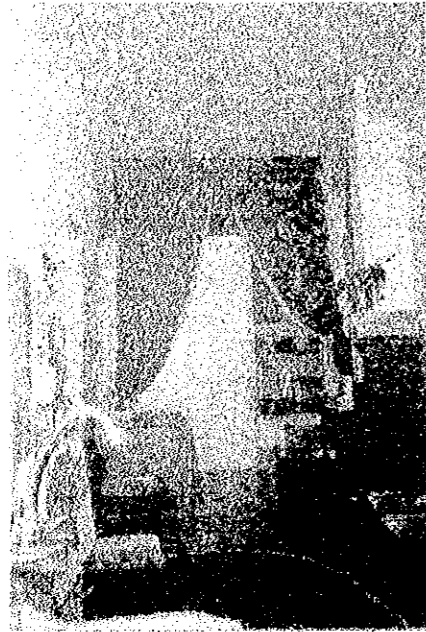


PHOTO NO. (1)

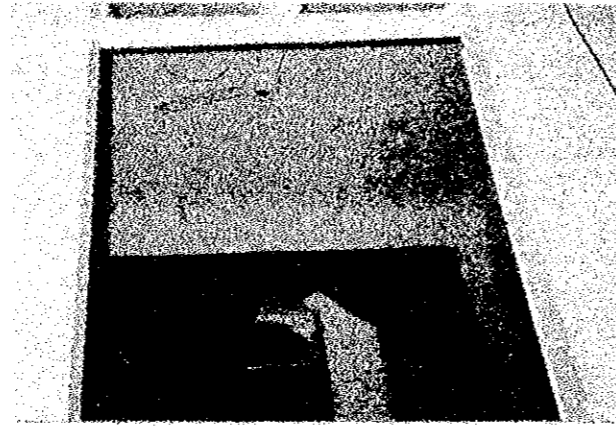


PHOTO NO. (2)



PHOTO NO. (3)

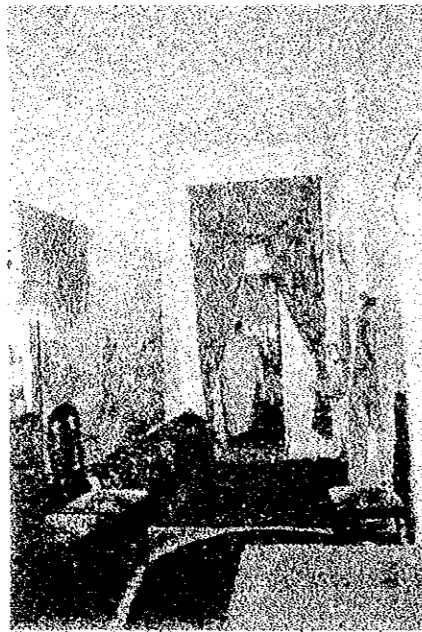


PHOTO NO. (4)

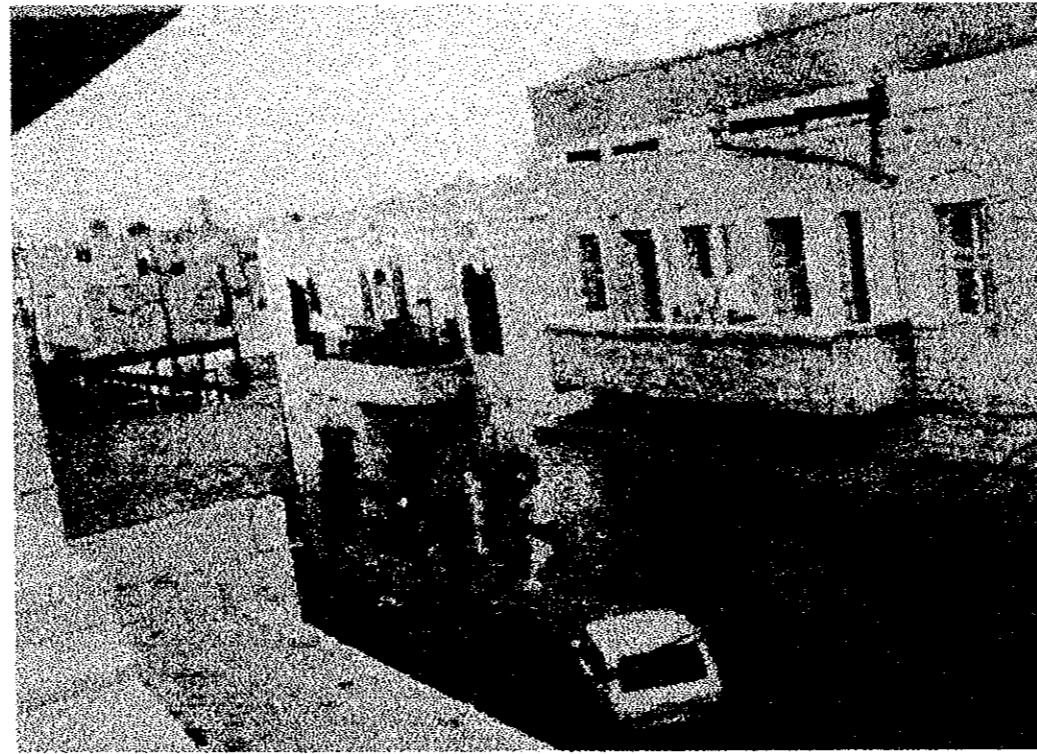


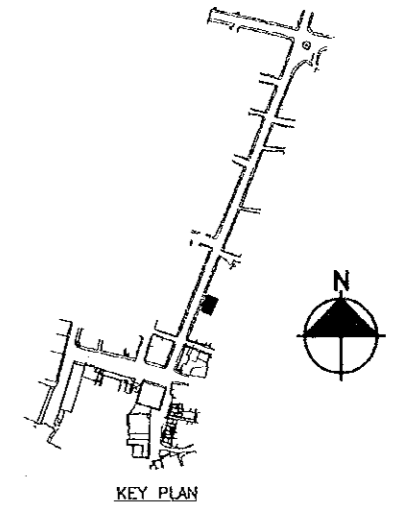
PHOTO NO. (5)

Project:  
Tourism Sector Development Project  
in the Hashemite Kingdom of Jordan

Executing Agency  
The Ministry of Tourism and Antiquities  
The Ministry of Planning

SUB-PROJECT:  
Karak Tourism Development Project  
Tourist Street

Note:  
This detailed design has been executed by  
a team of consultants as shown below in  
accordance with the agreement between  
Japan International Cooperation Agency  
(JICA) and JICA Study Team.  
The copyright of this drawing rests with  
JICA .



Designed by:  
Japan International Cooperation  
Agency (JICA)

JICA Study Team:  
Joint Venture of  
Pacific Consultants International and  
Yamasita Sekkei Inc.

Subcontracted Local Consultant:

**consolidated consultants**  
engineering & environment  
Tel: 4612377 - Fax: 4612380 - AMMAN - JORDAN

**DETAILED BUILDING SURVEY**

Drawing Title:

Scale: N.T.S.

Drawing No.: DB.S-SH2.MD-002-WP

212

### (3) AL - MAJALI 1 , AL MAJALI 2 , & SABHA

#### a. DLAIWAN AL- NAJALI (1)

(1) Features of Building

The area of the building is 352 m2 composed of two floors basement and ground. the roof and basement cover Made of steel i beams, wooden rafters, mud. modern extension and balcony have been added to the Building. again the age of the building is about ninety years.

(2) Current condition and restoration measures.

almost no cracks are seen. the building is considered to be in good condition. the basement is in need of renovation but otherwise seems structurally in tact.

#### B-DLAIWAN AL-MAJALI (2)

(1) Features of Building

The area of the building is 236 m2 composed of two floors basement and ground. the age of the Building is about ninety years.

(2) Current condition and restoration measures.

The roof is composed of wooden rafters. it is partially collapsed and in need of almost reconstruction.

The basement is covered of i beams, tree trunks and mud which is in moderate condition. generally speaking the Building is in poor to fair condition

#### SABHA

#### (1) FEATURES OF BUILDING

This is a small building with area of 200 m2 composed of a basement and ground floor. this building is about About ninety years old but is partially renovated using modern materials and techniques.

(2) Current condition and restoration measures.

The basement's cover is of old construction with steel i beams and tree trunks. the roof has been modernized As a concrete slab. the building is in a good condition but does not retain tradition. one of

The rooms in the basement has a collapsed roof. the bathroom and kitchen's roof are also partially collapsed

Project:  
Tourism Sector Development Project  
in the Hashemite Kingdom of Jordan

Executing Agency

The Ministry of Tourism and Antiquities  
The Ministry of Planning

SUB-PROJECT:

Karak Tourism Development Project  
Tourist Street

Note:

This detailed design has been executed by a team of consultants as shown below in accordance with the agreement between Japan International Cooperation Agency (JICA) and JICA Study Team.

The copyright of this drawing rests with JICA .

Designed by:

Japan International Cooperation Agency (JICA)

JICA Study Team:

Joint Venture of  
Pacific Consultants International and  
Yamasita Sekkei Inc.

Subcontracted Local Consultant:

 **consolidated consultants**  
engineering & environment  
Tel: 4612377 - Fax: 4612380 - AMMAN - JORDAN

**DETAILED BUILDING  
SURVEY**

Drawing Title:

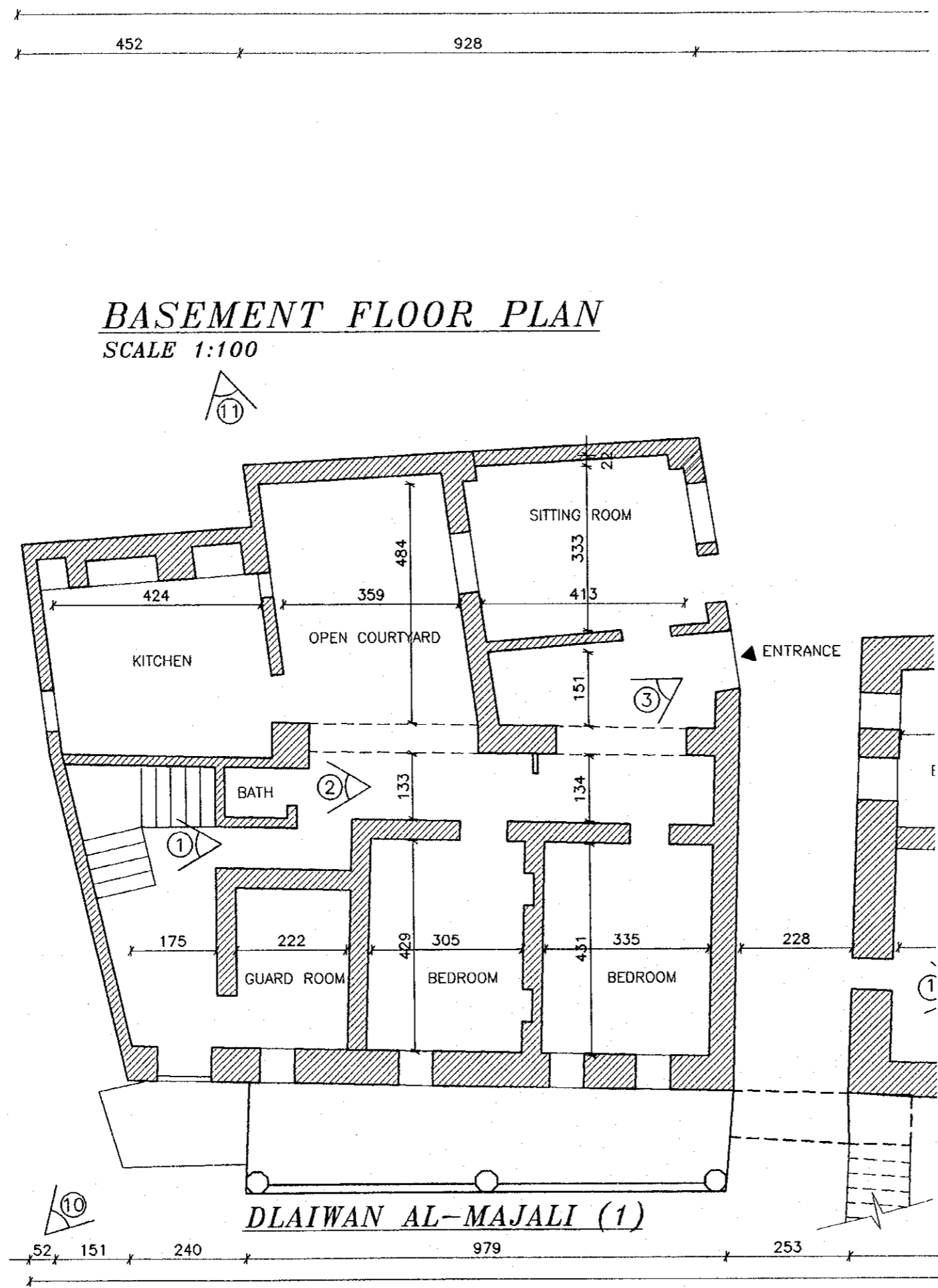
Scale:

N.T.S

Drawing No.:

MJ1,2,SB001T



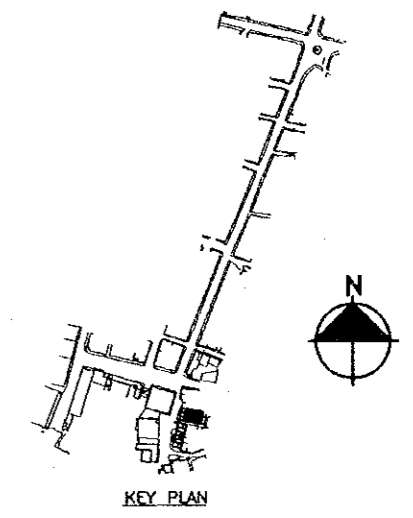


Project:  
Tourism Sector Development Project  
in the Hashemite Kingdom of Jordan

Executing Agency  
The Ministry of Tourism and Antiquities  
The Ministry of Planning

SUB-PROJECT:  
Karak Tourism Development Project  
Tourist Street

Note:  
This detailed design has been executed by a team of consultants as shown below in accordance with the agreement between Japan International Cooperation Agency (JICA) and JICA Study Team.  
The copyright of this drawing rests with JICA.



Designed by:  
Japan International Cooperation Agency (JICA)

JICA Study Team:  
Joint Venture of  
Pacific Consultants International and  
Yamasita Sekkei Inc.

Subcontracted Local Consultant:  
**consolidated consultants**  
engineering & environment  
Tel: 4612377 - Fax: 4612380 - AMMAN - JORDAN

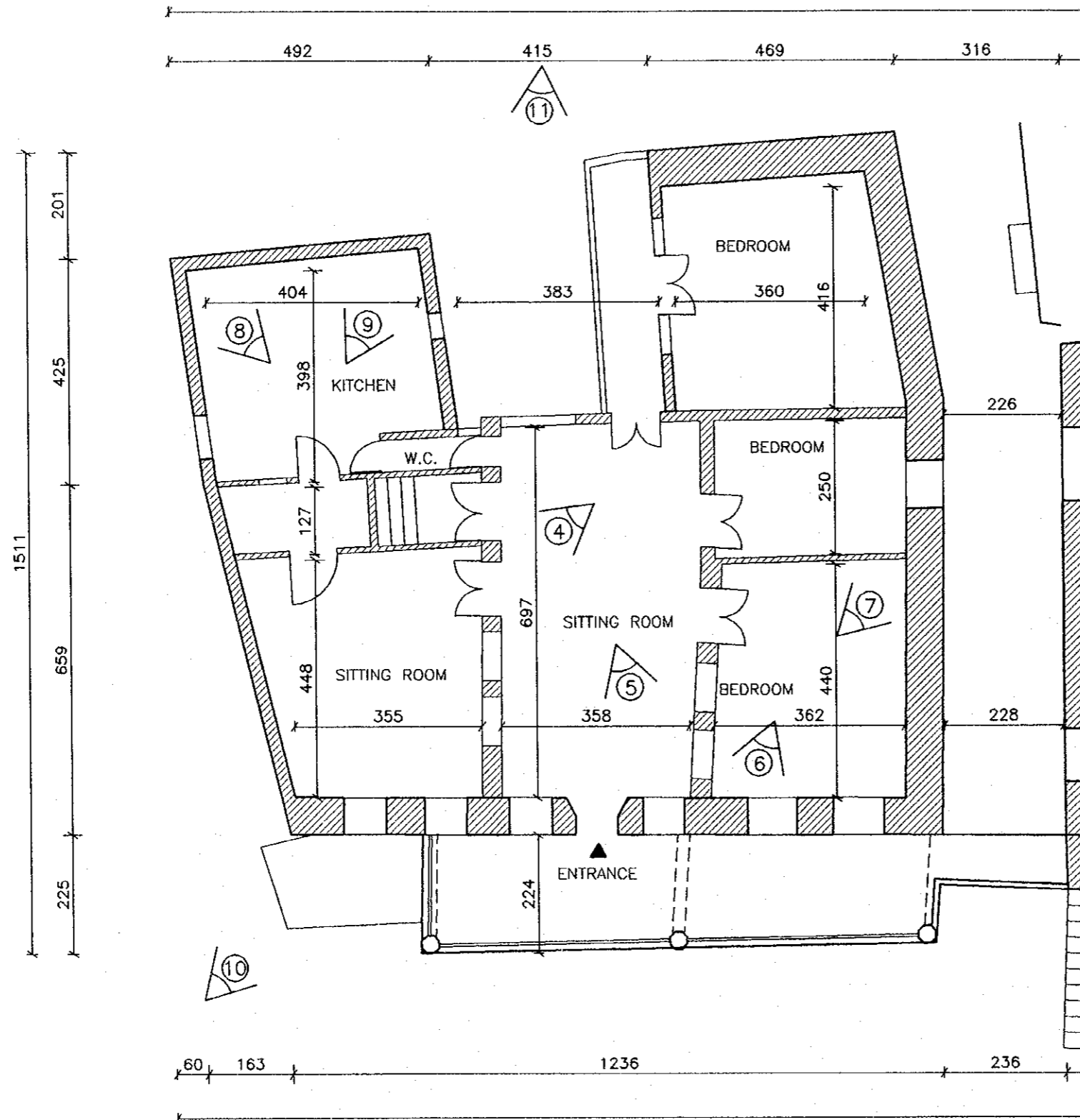
**DETAILED BUILDING SURVEY**  
Drawing Title:

Scale: 1/100  
Drawing No.: D.B.S.-H/1,2SB-001a

MR

# GROUND FLOOR PLAN

SCALE 1:100



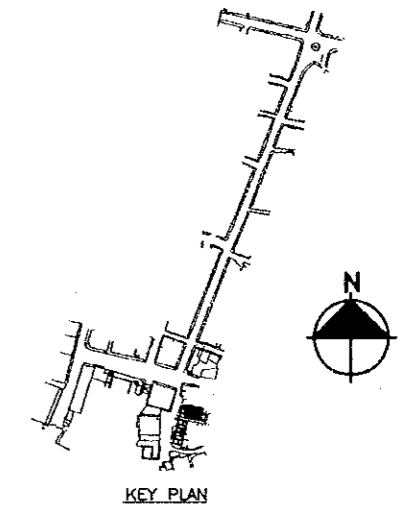
DLAIWAN AL-MAJALI (1)

Project:  
Tourism Sector Development Project  
in the Hashemite Kingdom of Jordan

Executing Agency  
The Ministry of Tourism and Antiquities  
The Ministry of Planning

SUB-PROJECT:  
Karak Tourism Development Project  
Tourist Street

Note:  
This detailed design has been executed by a team of consultants as shown below in accordance with the agreement between Japan International Cooperation Agency (JICA) and JICA Study Team.  
The copyright of this drawing rests with JICA.



Designed by:  
Japan International Cooperation Agency (JICA)

JICA Study Team:  
Joint Venture of  
Pacific Consultants International and  
Yamasita Sekkei Inc.

Subcontracted Local Consultant:

**consolidated consultants**  
engineering & environment  
Tel: 4612377 - Fax: 4612380 - AMMAN - JORDAN

DETAILED BUILDING SURVEY

Drawing Title:

Scale: 1/100

Drawing No.: DB.S.-H/1,2SB-002a



PHOTO NO. (1)



PHOTO NO. (2)



PHOTO NO. (3)

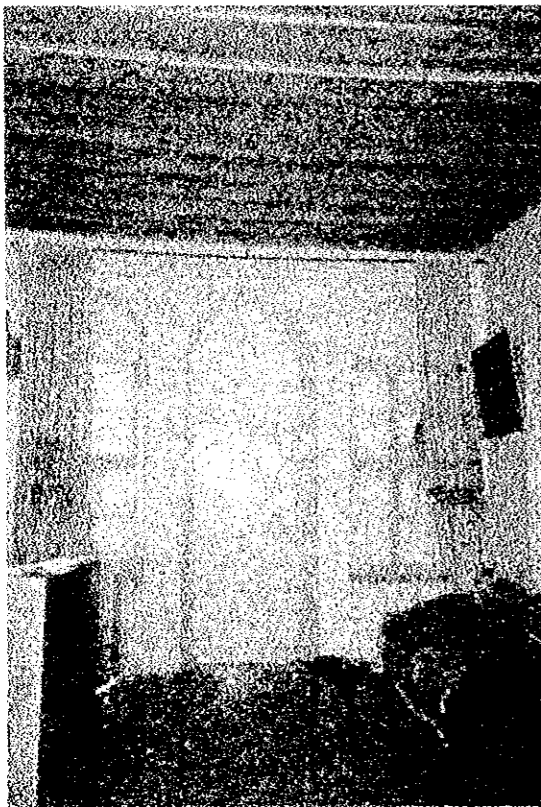


PHOTO NO. (4)



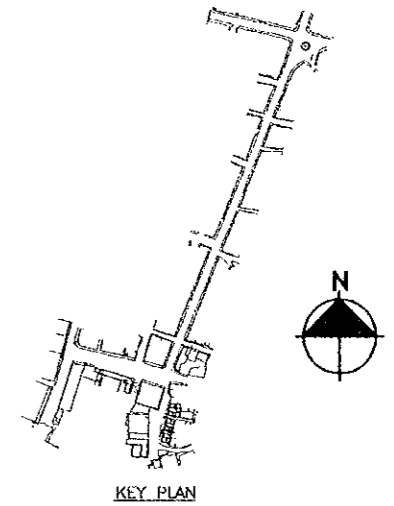
PHOTO NO. (5)

Project:  
Tourism Sector Development Project  
in the Hashemite Kingdom of Jordan

Executing Agency  
The Ministry of Tourism and Antiquities  
The Ministry of Planning

SUB-PROJECT:  
Karak Tourism Development Project  
Tourist Street

Note:  
This detailed design has been executed by  
a team of consultants as shown below in  
accordance with the agreement between  
Japan International Cooperation Agency  
(JICA) and JICA Study Team.  
  
The copyright of this drawing rests with  
JICA .



Designed by:  
Japan International Cooperation  
Agency (JICA)

JICA Study Team:  
Joint Venture of  
Pacific Consultants International and  
Yamasita Sekkei Inc.

Subcontracted Local Consultant:

 **consolidated consultants**  
engineering & environment  
Tel: 4612377 - Fax: 4612380 - AMMAN - JORDAN

*DETAILED BUILDING SURVEY*

Drawing Title:

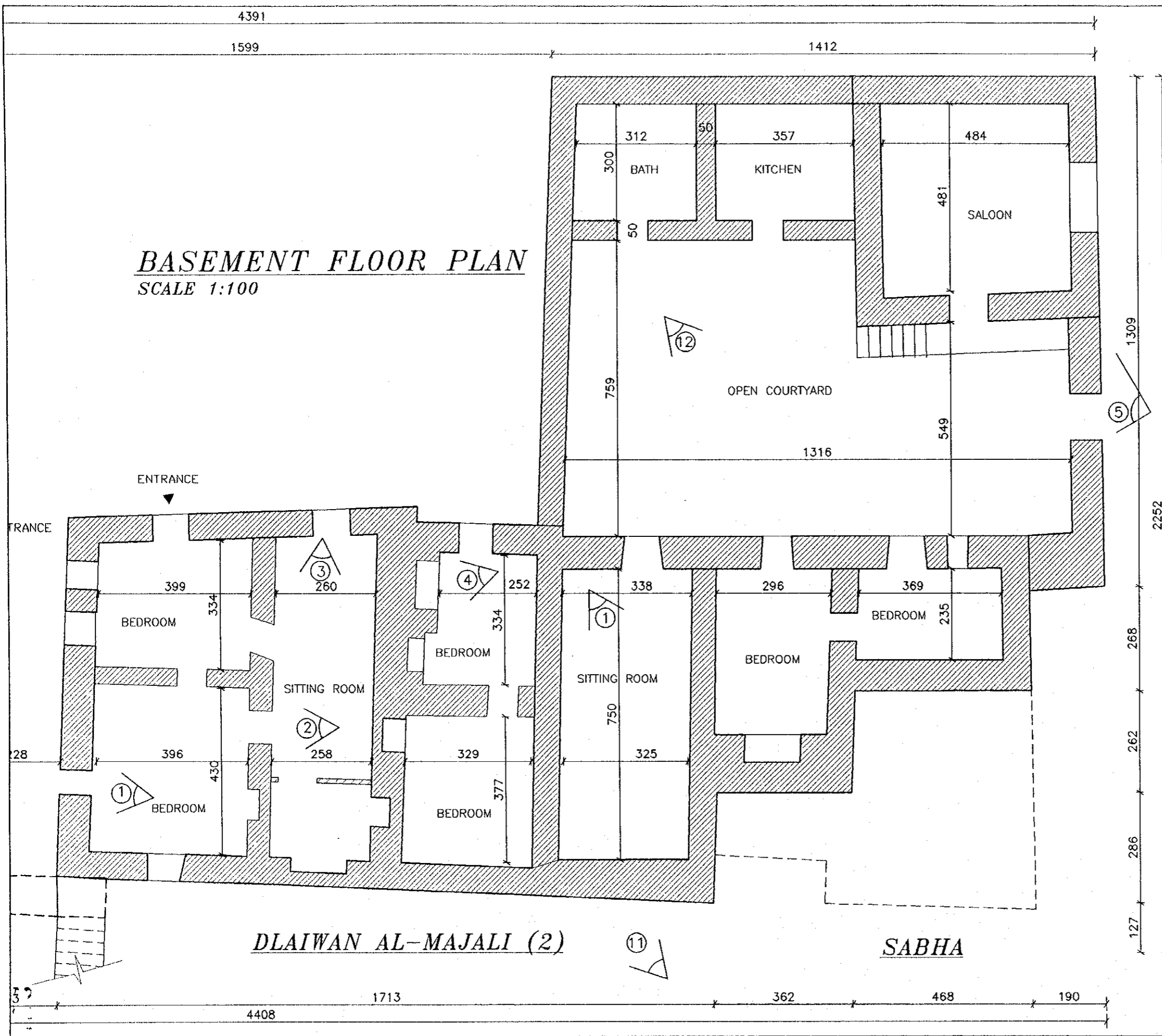
Scale:  
N.T.S.

Drawing No.:  
DBS-WJT-2SB-002dP

9/16

72  
13

***BASEMENT FLOOR PLAN***  
SCALE 1:100

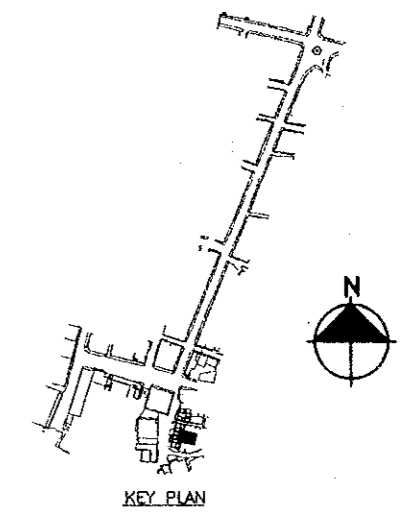


Project:  
Tourism Sector Development Project  
in the Hashemite Kingdom of Jordan

Executing Agency  
The Ministry of Tourism and Antiquities  
The Ministry of Planning

SUB-PROJECT:  
Karak Tourism Development Project  
Tourist Street

Note:  
This detailed design has been executed by  
a team of consultants as shown below in  
accordance with the agreement between  
Japan International Cooperation Agency  
(JICA) and JICA Study Team.  
The copyright of this drawing rests with  
JICA.



Designed by:  
Japan International Cooperation  
Agency (JICA)

JICA Study Team:  
Joint Venture of  
Pacific Consultants International and  
Yamasita Sekkei Inc.

Subcontracted Local Consultant:  
**consolidated consultants**  
engineering & environment  
Tel: 4612377 - Fax: 4612380 - AMMAN - JORDAN

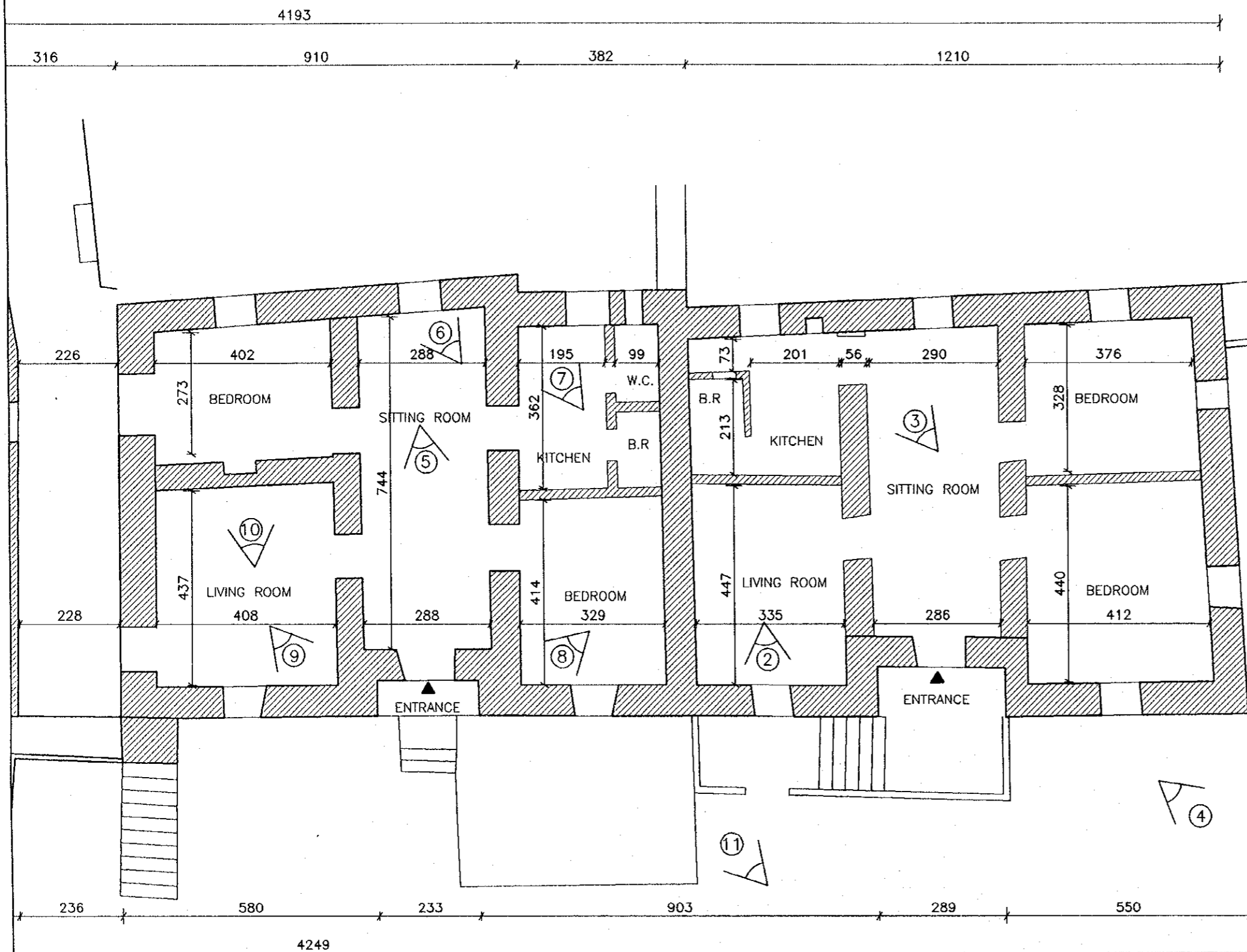
**DETAILED BUILDING SURVEY**  
Drawing Title:

Scale: 1/100 Drawing No.: DBS-HW12SB-001b

WTC

# GROUND FLOOR PLAN

SCALE 1:100

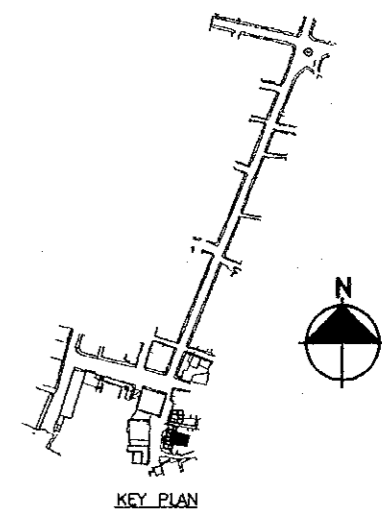


Project:  
Tourism Sector Development Project  
in the Hashemite Kingdom of Jordan

Executing Agency  
The Ministry of Tourism and Antiquities  
The Ministry of Planning

SUB-PROJECT:  
Karak Tourism Development Project  
Tourist Street

Note:  
This detailed design has been executed by  
a team of consultants as shown below in  
accordance with the agreement between  
Japan International Cooperation Agency  
(JICA) and JICA Study Team.  
  
The copyright of this drawing rests with  
JICA .



335  
23  
962  
1545  
225

Designed by:  
Japan International Cooperation  
Agency (JICA)

JICA Study Team:  
Joint Venture of  
Pacific Consultants International and  
Yamasita Sekkei Inc.

Subcontracted Local Consultant:  
**consolidated consultants**  
engineering & environment  
Tel: 4612377 - Fax: 4612380 - AMMAN - JORDAN

**DETAILED BUILDING SURVEY**

Drawing Title:

Scale: **1/100** Drawing No.: **DB.S.-H.U.2SB-0026**

**DLAIWAN AL-MAJALI (2)**

**SBHA**

2/8



PHOTO NO. (1)

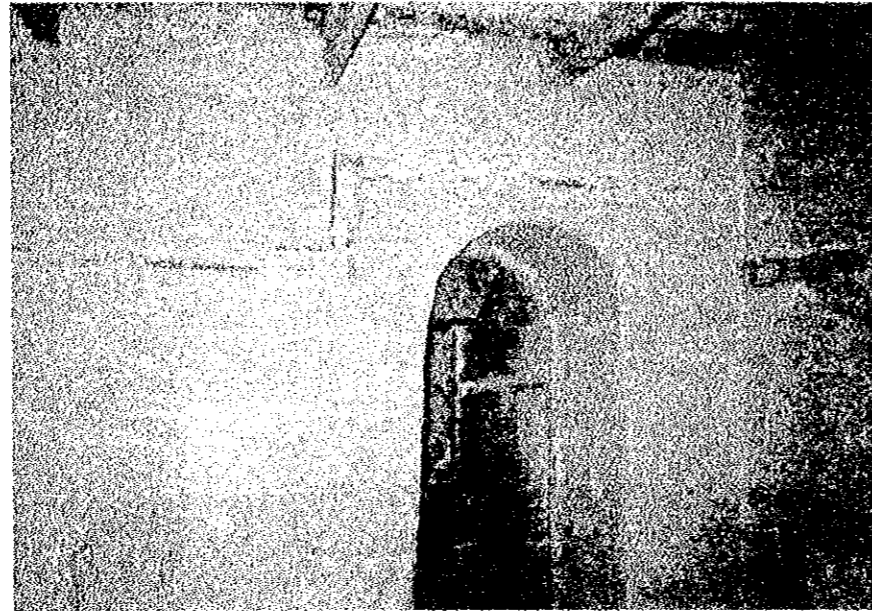


PHOTO NO. (2)



PHOTO NO. (3)



PHOTO NO. (4)



PHOTO NO. (5)



PHOTO NO. (6)

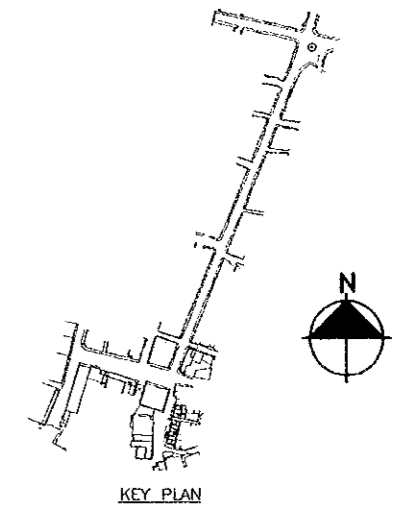
Project:  
Tourism Sector Development Project  
in the Hashemite Kingdom of Jordan

Executing Agency  
The Ministry of Tourism and Antiquities  
The Ministry of Planning

SUB-PROJECT:  
Karak Tourism Development Project  
Tourist Street

Note:  
This detailed design has been executed by  
a team of consultants as shown below in  
accordance with the agreement between  
Japan International Cooperation Agency  
(JICA) and JICA Study Team.

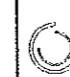
The copyright of this drawing rests with  
JICA .



Designed by:  
Japan International Cooperation  
Agency (JICA)

JICA Study Team:  
Joint Venture of  
Pacific Consultants International and  
Yamasita Sekkei Inc.

Subcontracted Local Consultant:

 **consolidated consultants**  
engineering & environment  
Tel: 4612377 - Fax: 4612380 - AMMAN - JORDAN

*DETAILED BUILDING SURVEY*  
Drawing Title:

Scale: **N.T.S** Drawing No.: **DB.S.-MJI,2SD-0016P**

612

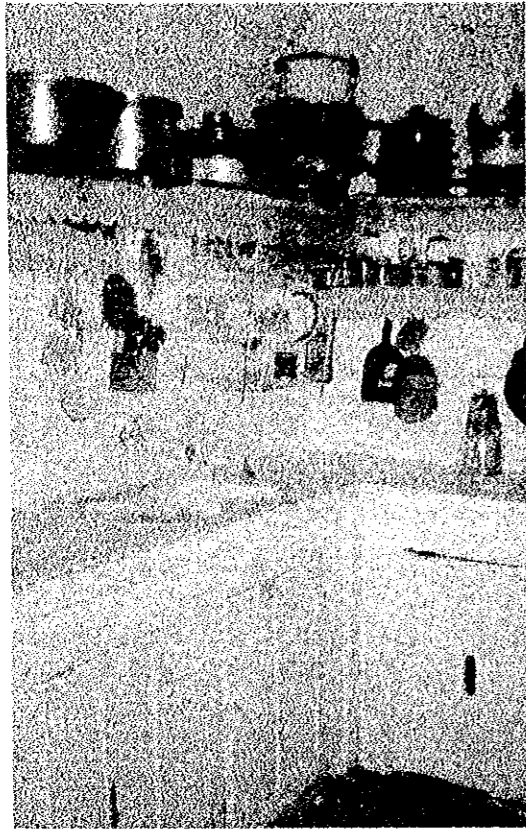


PHOTO NO. (7)



PHOTO NO. (8)



PHOTO NO. (9)



PHOTO NO. (10)



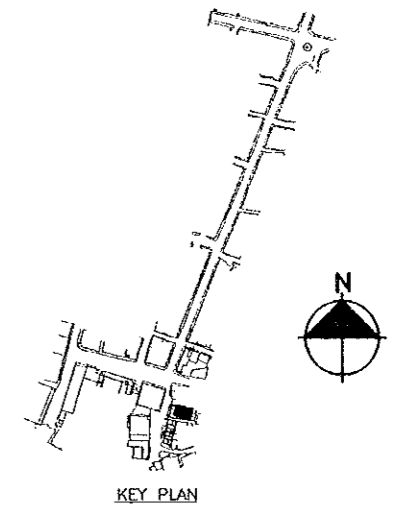
PHOTO NO. (11)

Project:  
Tourism Sector Development Project  
in the Hashemite Kingdom of Jordan

Executing Agency  
The Ministry of Tourism and Antiquities  
The Ministry of Planning

SUB-PROJECT:  
Karak Tourism Development Project  
Tourist Street


Note:  
This detailed design has been executed by  
a team of consultants as shown below in  
accordance with the agreement between  
Japan International Cooperation Agency  
(JICA) and JICA Study Team.  
The copyright of this drawing rests with  
JICA .



Designed by:  
Japan International Cooperation  
Agency (JICA)

JICA Study Team:  
Joint Venture of  
Pacific Consultants International and  
Yamasita Sekkei Inc.

Subcontracted Local Consultant:

 **consolidated consultants**  
engineering & environment  
Tel: 4612377 - Fax: 4612380 - AMMAN - JORDAN

*DETAILED BUILDING SURVEY*  
Drawing Title:

Scale: **N.T.S** Drawing No.: **DBS-MUJ.2SB-002BP**

270  
000