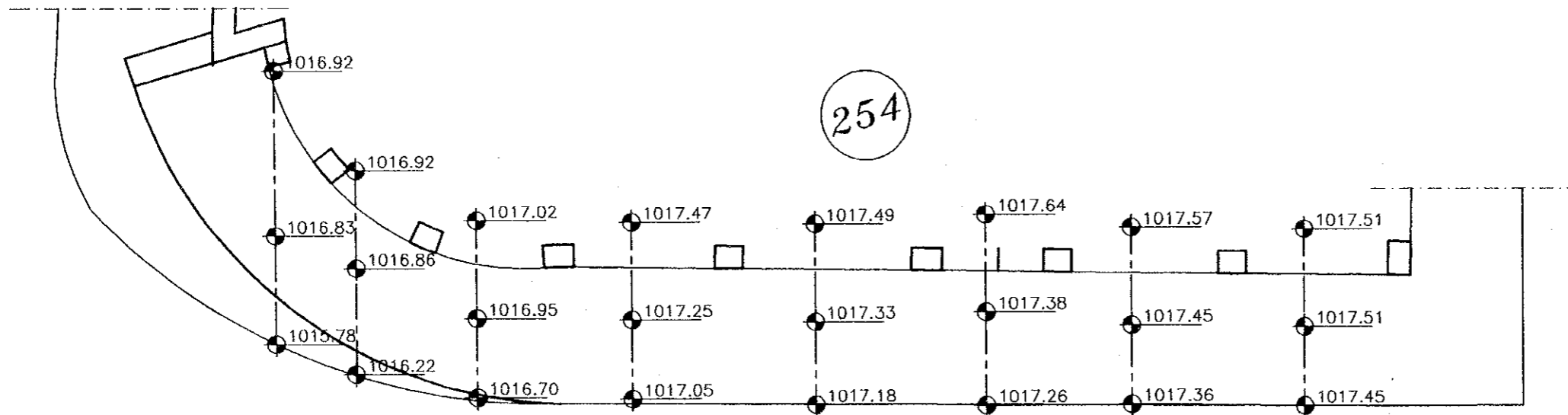




PHOTO NO. (62)



PLAN (254)

PHOTO (62)

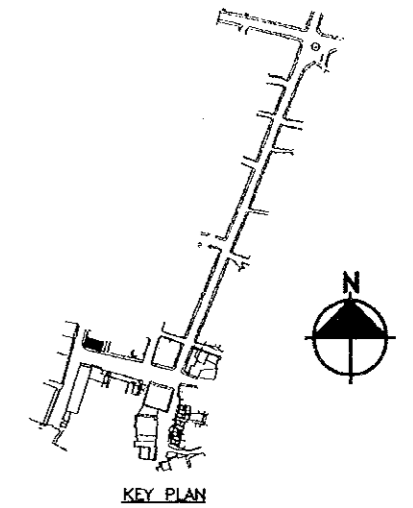
Project:  
Tourism Sector Development Project  
in the Hashemite Kingdom of Jordan

Executing Agency  
The Ministry of Tourism and Antiquities  
The Ministry of Planning

SUB-PROJECT:  
Karak Tourism Development Project  
Tourist Street

Note:  
This detailed design has been executed by  
a team of consultants as shown below in  
accordance with the agreement between  
Japan International Cooperation Agency  
(JICA) and JICA Study Team.

The copyright of this drawing rests with  
JICA .



Designed by:  
Japan International Cooperation  
Agency (JICA)

JICA Study Team:  
Joint Venture of  
Pacific Consultants International and  
Yamasita Sekkei Inc.

Subcontracted Local Consultant:

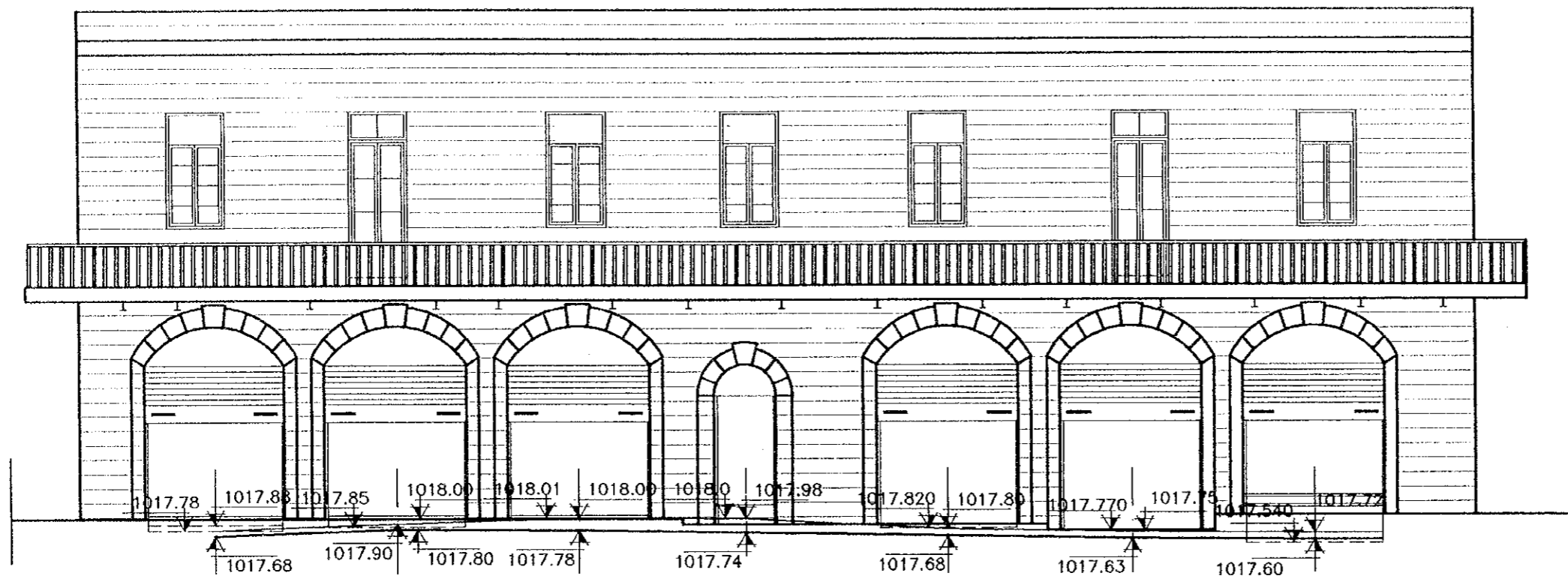
**consolidated consultants**  
engineering & environment  
Tel: 4612377 - Fax: 4612380 - AMMAN - JORDAN

Drawing Title: *TOURIST STREET  
SURVEY LAY OUT*

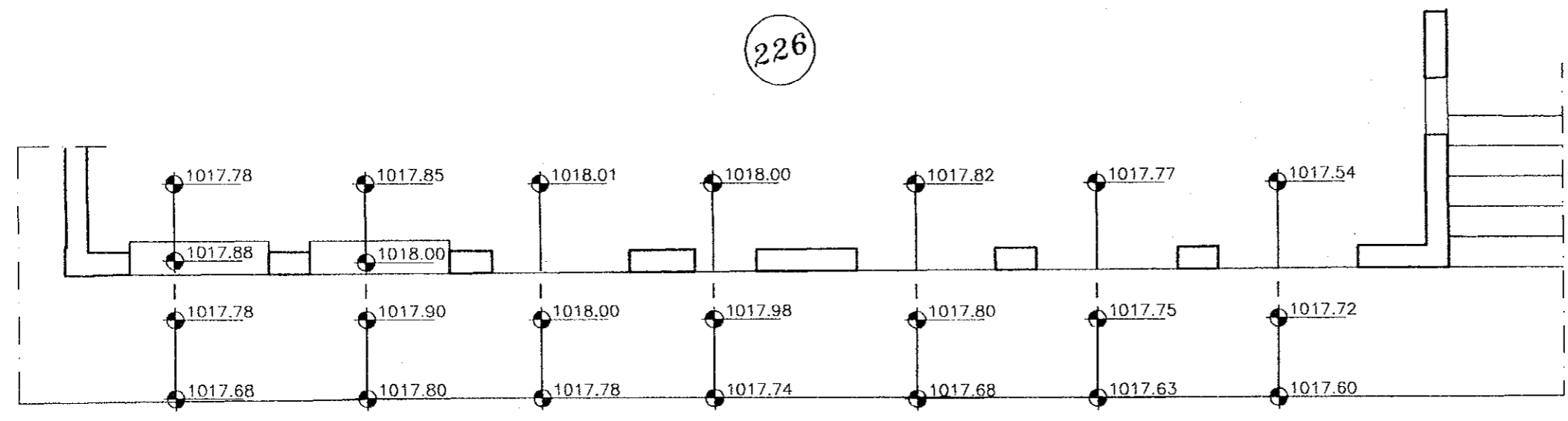
Scale:  
1:100

Drawing No.: T.S.S-065P

182



ELEV. (226)



PLAN (226)

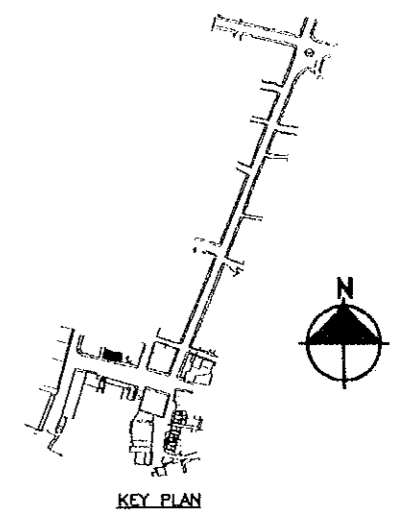
Project:  
Tourism Sector Development Project  
in the Hashemite Kingdom of Jordan

Executing Agency  
The Ministry of Tourism and Antiquities  
The Ministry of Planning

SUB-PROJECT:  
Karak Tourism Development Project  
Tourist Street

Note:  
This detailed design has been executed by  
a team of consultants as shown below in  
accordance with the agreement between  
Japan International Cooperation Agency  
(JICA) and JICA Study Team.

The copyright of this drawing rests with  
JICA .



Designed by:  
Japan International Cooperation  
Agency (JICA)

JICA Study Team:  
Joint Venture of  
Pacific Consultants International and  
Yamasita Sekkei Inc.

Subcontracted Local Consultant:  
**consolidated consultants**  
engineering & environment  
Tel: 4612377 - Fax: 4612380 - AMMAN - JORDAN

Drawing Title: **TOURIST STREET  
SURVEY LAY OUT**

Scale: **1:100** Drawing No.: **T.S.S-066**

184

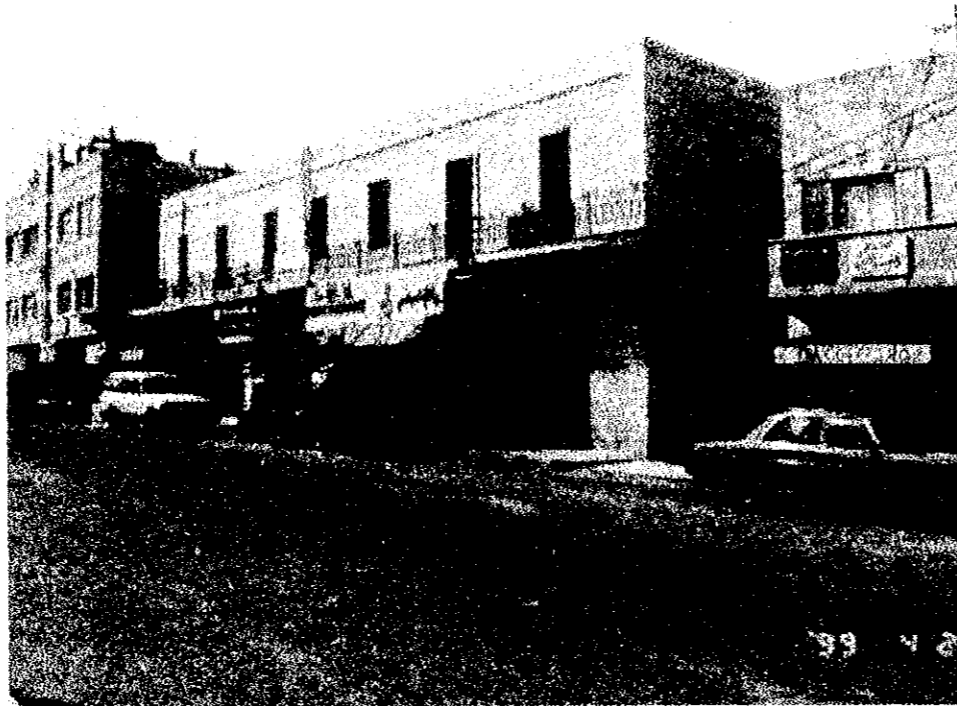
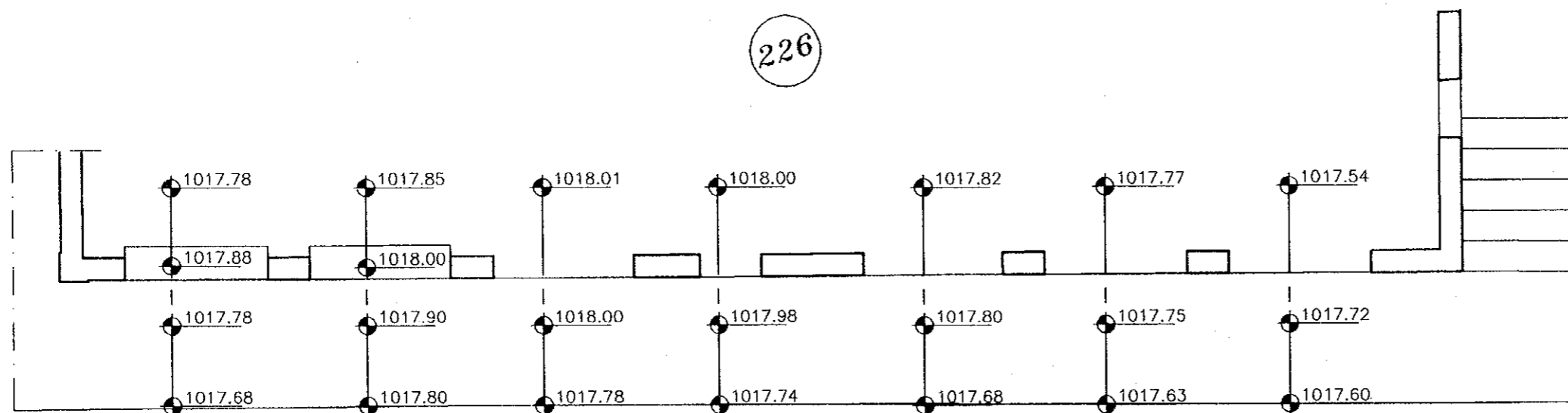


PHOTO NO. (61)

226



PLAN (226)

PHOTO (61)

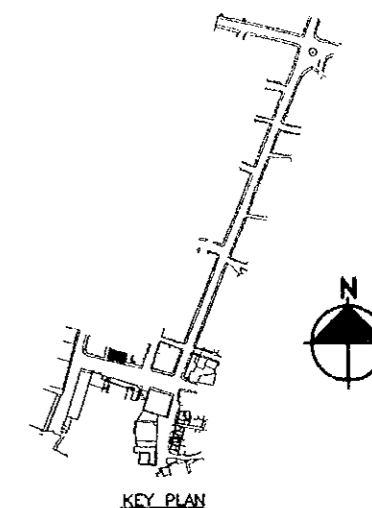
Project:  
Tourism Sector Development Project  
in the Hashemite Kingdom of Jordan

Executing Agency  
The Ministry of Tourism and Antiquities  
The Ministry of Planning

SUB-PROJECT:  
Karak Tourism Development Project  
Tourist Street

Note:  
This detailed design has been executed by  
a team of consultants as shown below in  
accordance with the agreement between  
Japan International Cooperation Agency  
(JICA) and JICA Study Team.

The copyright of this drawing rests with  
JICA .



Designed by:  
Japan International Cooperation  
Agency (JICA)

JICA Study Team:  
Joint Venture of  
Pacific Consultants International and  
Yamasita Sekkei Inc.

Subcontracted Local Consultant:

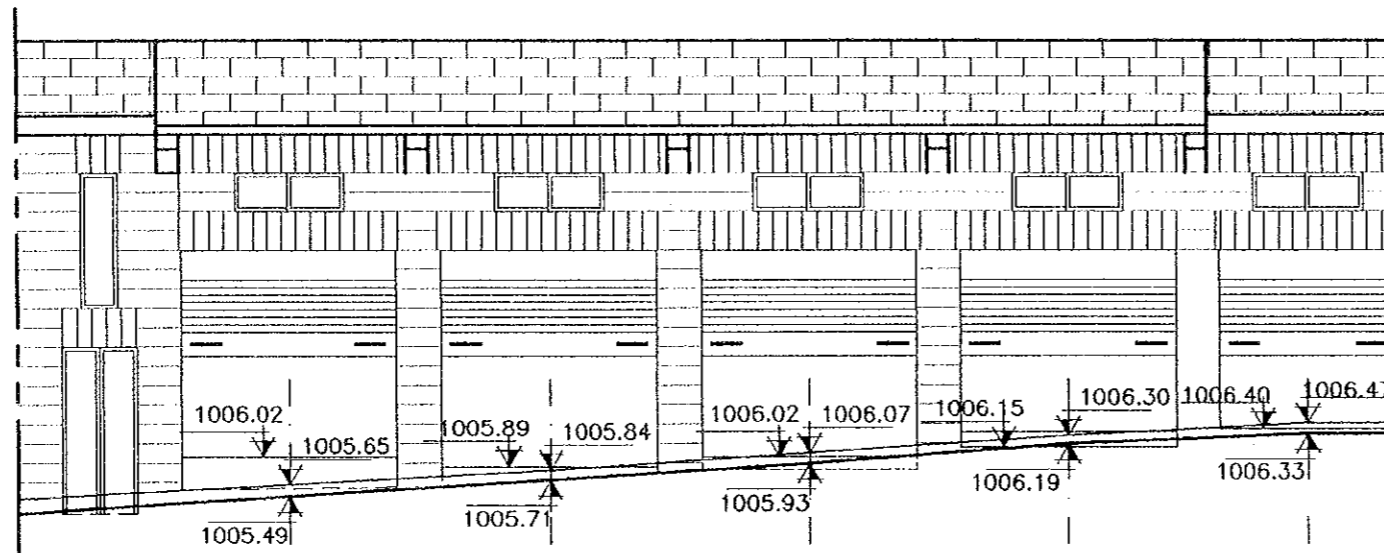
**consolidated consultants**  
engineering & environment  
Tel: 4612377 - Fax: 4612380 - AMMAN - JORDAN

Drawing Title: **TOURIST STREET  
SURVEY LAY OUT**

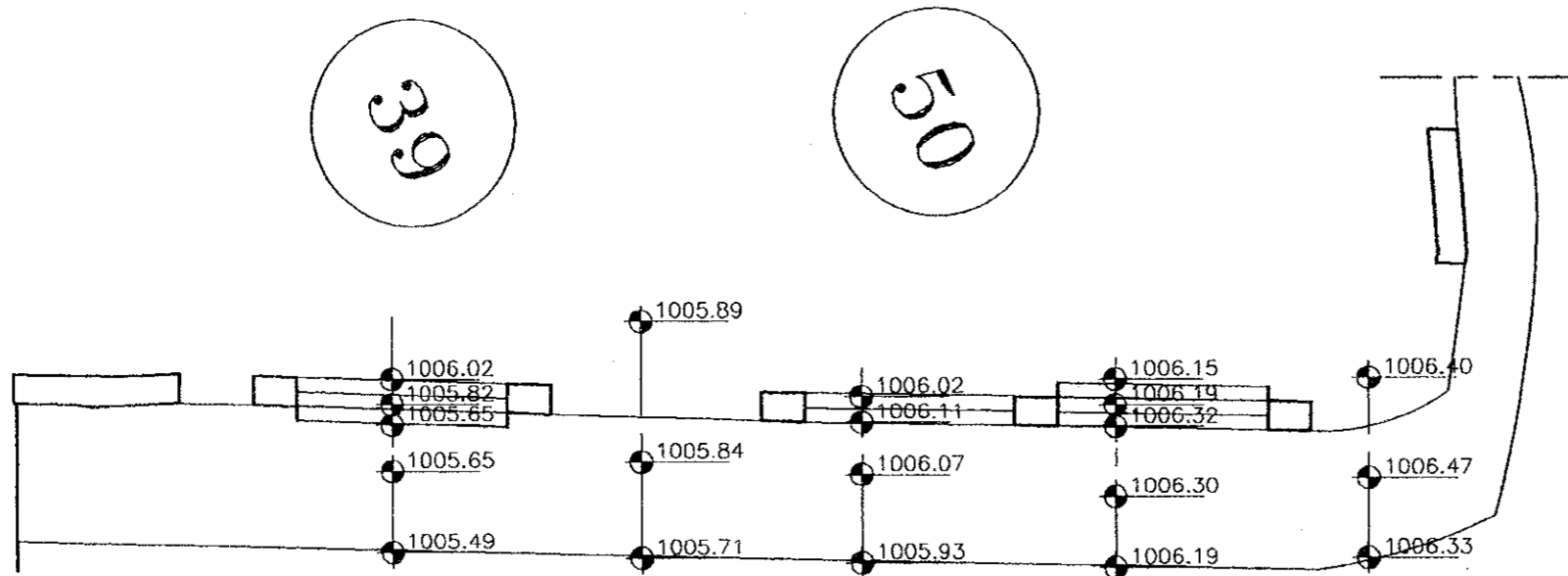
Scale:  
**1:100**

Drawing No.:  
**T.S.S-066P**

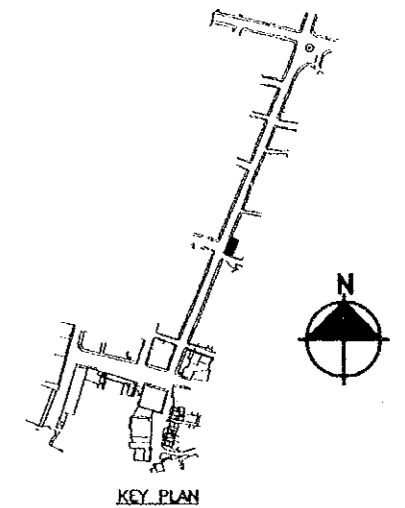
SW



ELEV. (74)



PLAN (74)



Project:  
Tourism Sector Development Project  
in the Hashemite Kingdom of Jordan

Executing Agency  
The Ministry of Tourism and Antiquities  
The Ministry of Planning


SUB-PROJECT:  
Karak Tourism Development Project  
Tourist Street

Note:  
This detailed design has been executed by  
a team of consultants as shown below in  
accordance with the agreement between  
Japan International Cooperation Agency  
(JICA) and JICA Study Team.  
The copyright of this drawing rests with  
JICA .

Designed by:  
Japan International Cooperation  
Agency (JICA)

JICA Study Team:  
Joint Venture of  
Pacific Consultants International and  
Yamasita Sekkei Inc.

Subcontracted Local Consultant:

 **consolidated consultants**  
engineering & environment  
Tel: 4612377 - Fax: 4612380 - AMMAN - JORDAN

Drawing Title: TOURIST STREET  
SURVEY LAY OUT

Scale: 1:100  
Drawing No.: T.S.S-067

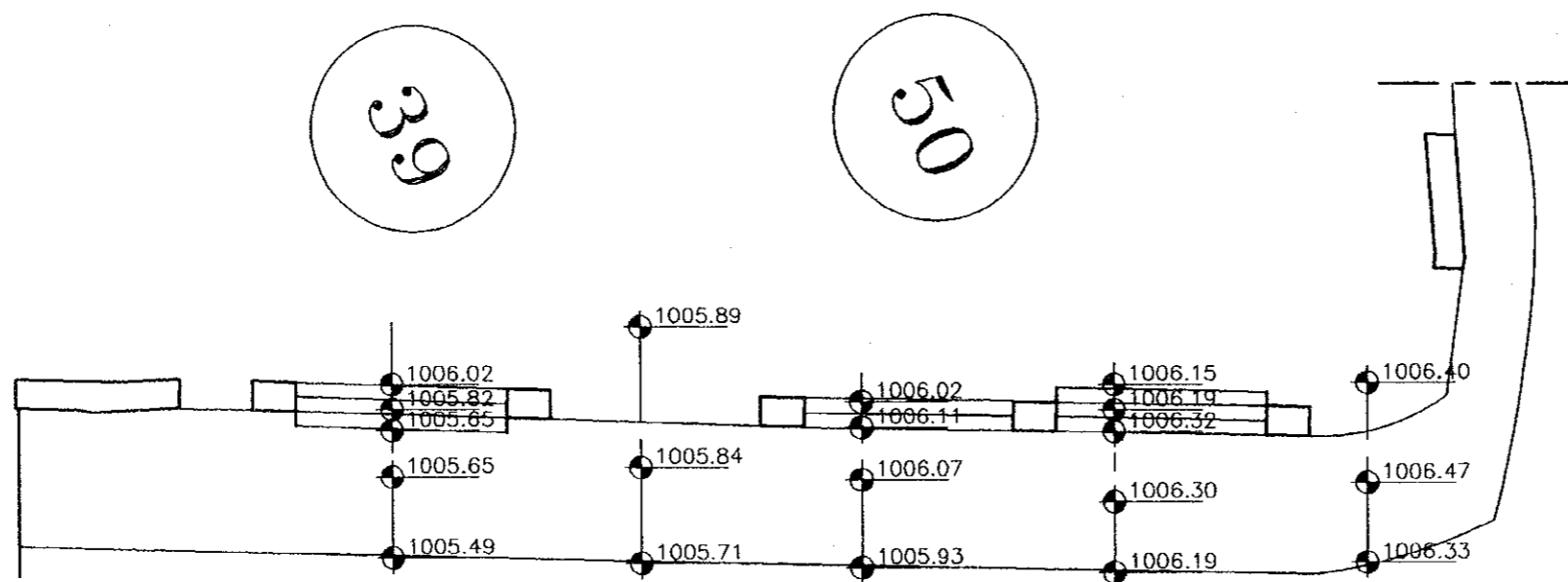
902



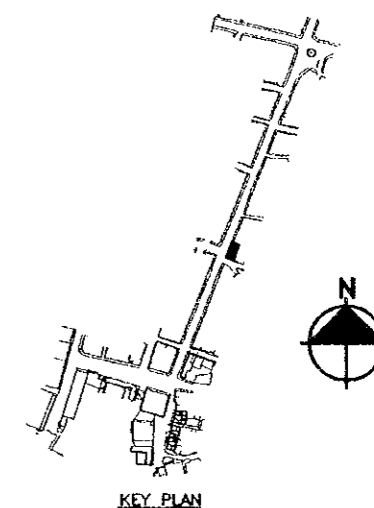
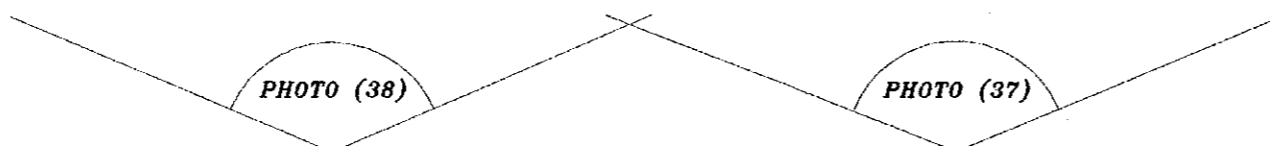
PHOTO NO. (38)



PHOTO NO. (37)



PLAN(74)



KEY PLAN

Project:  
Tourism Sector Development Project  
in the Hashemite Kingdom of Jordan

Executing Agency  
The Ministry of Tourism and Antiquities  
The Ministry of Planning

SUB-PROJECT:  
Karak Tourism Development Project  
Tourist Street

Note:  
This detailed design has been executed by  
a team of consultants as shown below in  
accordance with the agreement between  
Japan International Cooperation Agency  
(JICA) and JICA Study Team.

The copyright of this drawing rests with  
JICA .

Designed by:  
Japan International Cooperation  
Agency (JICA)

JICA Study Team:  
Joint Venture of  
Pacific Consultants International and  
Yamasita Sekkei Inc.

Subcontracted Local Consultant:

**consolidated consultants**  
engineering & environment  
Tel: 4612377 - Fax: 4612380 - AMMAN - JORDAN

Drawing Title: **TOURIST STREET  
SURVEY LAY OUT**

Scale: **1:100**

Drawing No.: **T.S.S-067P**

187



ELEV. (271.322.269)

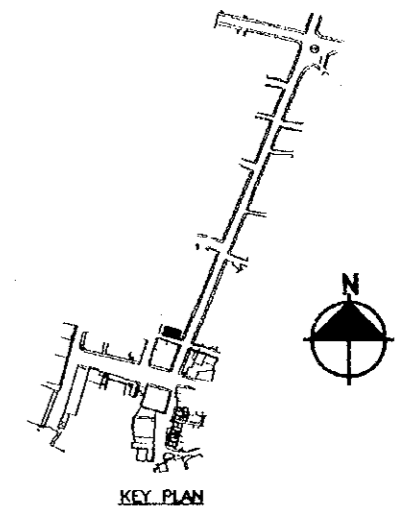
PLAN (271.322.269)

Project:  
 Tourism Sector Development Project  
 in the Hashemite Kingdom of Jordan

Executing Agency  
 The Ministry of Tourism and Antiquities  
 The Ministry of Planning

SUB-PROJECT:  
 Karak Tourism Development Project  
 Tourist Street

Note:  
 This detailed design has been executed by  
 a team of consultants as shown below in  
 accordance with the agreement between  
 Japan International Cooperation Agency  
 (JICA) and JICA Study Team.  
 The copyright of this drawing rests with  
 JICA .



Designed by:  
 Japan International Cooperation  
 Agency (JICA)

JICA Study Team:  
 Joint Venture of  
 Pacific Consultants International and  
 Yamasita Sekkei Inc.

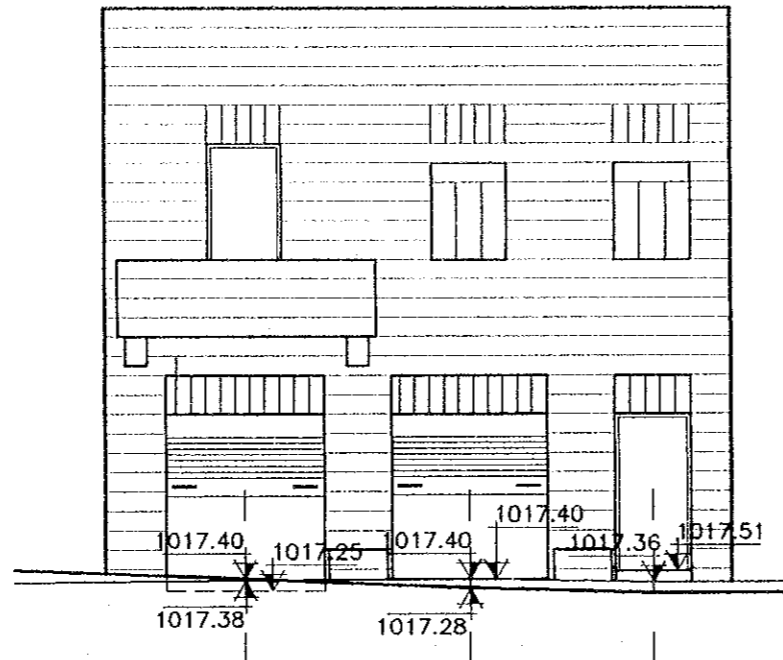
Subcontracted Local Consultant:

**consolidated consultants**  
 engineering & environment  
 Tel: 4612377 - Fax: 4612380 - AMMAN - JORDAN

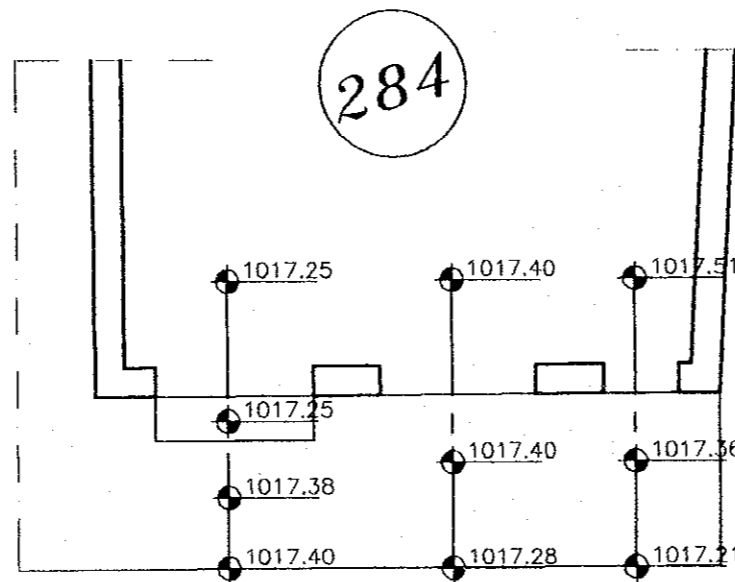
**TOURIST STREET**  
 Drawing Title: **SURVEY LAY OUT**

Scale: **1:100** Drawing No.: **T.S.S-068**

182



ELEV. (284)



PLAN (284)

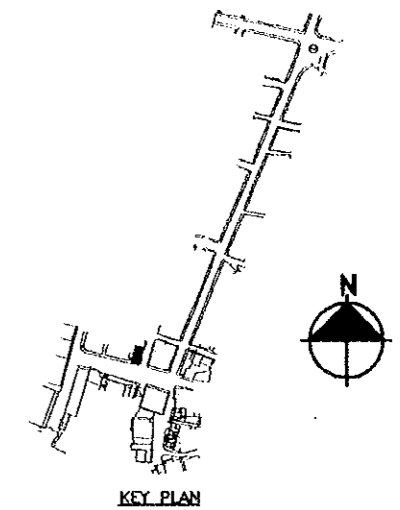
Project:  
 Tourism Sector Development Project  
 in the Hashemite Kingdom of Jordan

Executing Agency  
 The Ministry of Tourism and Antiquities  
 The Ministry of Planning

SUB-PROJECT:  
 Karak Tourism Development Project  
 Tourist Street

Note:  
 This detailed design has been executed by  
 a team of consultants as shown below in  
 accordance with the agreement between  
 Japan International Cooperation Agency  
 (JICA) and JICA Study Team.

The copyright of this drawing rests with  
 JICA .



Designed by:  
 Japan International Cooperation  
 Agency (JICA)

JICA Study Team:  
 Joint Venture of  
 Pacific Consultants International and  
 Yamasita Sekkei Inc.

Subcontracted Local Consultant:

**consolidated consultants**  
 engineering & environment  
 Tel: 4612377 - Fax: 4612380 - AMMAN - JORDAN

Drawing Title: *TOURIST STREET  
 SURVEY LAY OUT*

Scale: 1:100 Drawing No.: TS.S-071

189

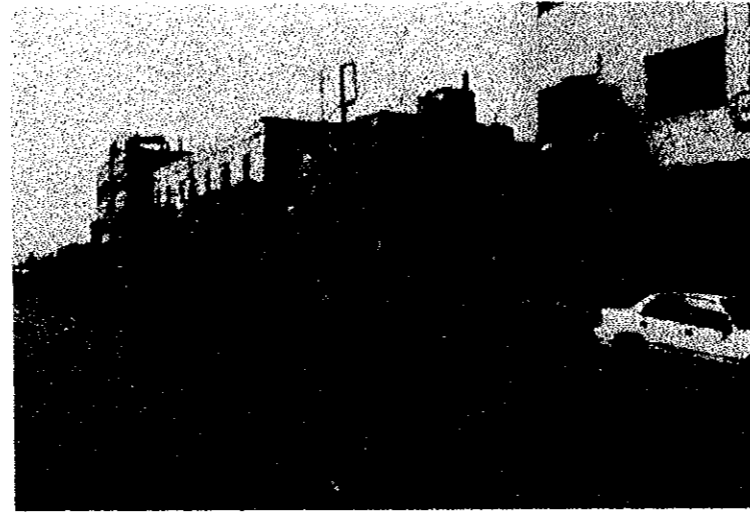
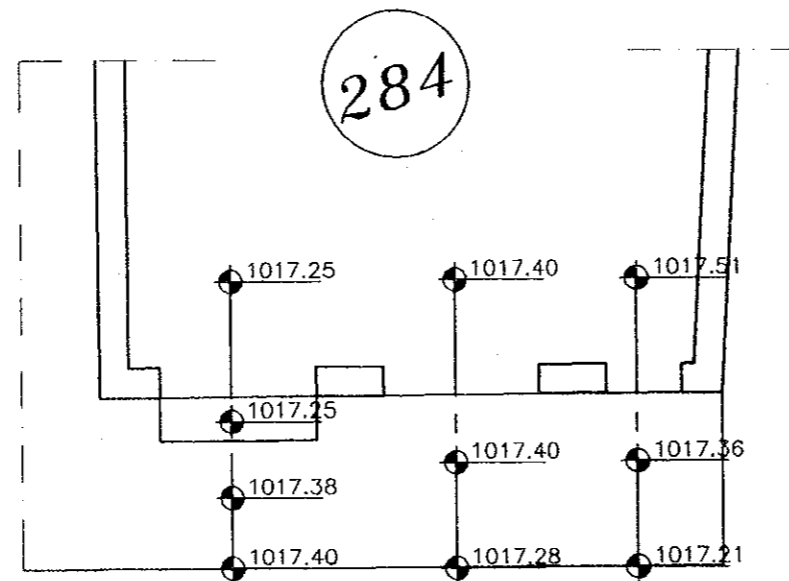


PHOTO NO. (61B)



PLAN (284)

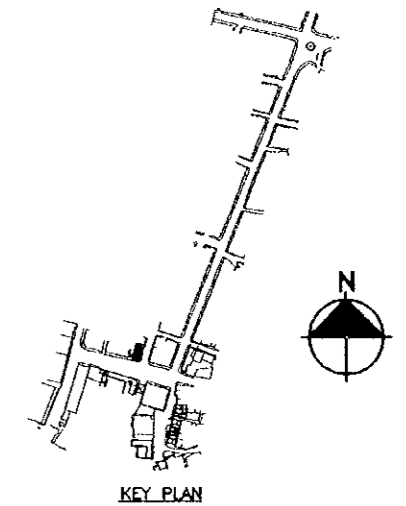
PHOTO (61B)

Project:  
Tourism Sector Development Project  
in the Hashemite Kingdom of Jordan

Executing Agency  
The Ministry of Tourism and Antiquities  
The Ministry of Planning

SUB-PROJECT:  
Karak Tourism Development Project  
Tourist Street

Note:  
This detailed design has been executed by  
a team of consultants as shown below in  
accordance with the agreement between  
Japan International Cooperation Agency  
(JICA) and JICA Study Team.  
The copyright of this drawing rests with  
JICA .



Designed by:  
Japan International Cooperation  
Agency (JICA)

JICA Study Team:  
Joint Venture of  
Pacific Consultants International and  
Yamasita Sekkei Inc.

Subcontracted Local Consultant:

**consolidated consultants**  
engineering & environment  
Tel: 4612377 - Fax: 4612380 - AMMAN - JORDAN

Drawing Title: **TOURIST STREET  
SURVEY LAY OUT**

Scale: **1:100**

Drawing No.: **TSS-071P**

190



JUNE 2000  
KARAK TOURISM DEVELOPMENT PROJECT  
SURVEY REPORT

DETAILED BUILDING SURVEY

- AL SHAMAYLEH (1)
- AL SHAMAYLEH (2) & AL MADADHAH
- AL MAJALI (1), AL MAJALI (2) & SABHAH
- VISITORS CENTER

## DETAILED BUILDING SURVEY

### D. STRUCTURES OF A UNIQUE CHARACTER

Being at Karak, one can explore several unique buildings behind blind walls, empty & out of use, especially at basement level, Abdullah Al-Shamayleh, Sabha, and Dlaiwan Al-Majali, residences opening onto the area of study. such key buildings can provide future attraction points to reinforce the regard for the traditional building stock and to act as a catalyst for more popular participation and further investments.

#### (1) ABDALLAH AL-SHAMAYLEH (1)

##### (1) FEATURES OF BUILDING

This is a building of three floors, basement, ground and partial first. The area of the building is about 581 m<sup>2</sup>. It seems to have been built about ninety to one hundred years ago. Parts of the building may have been built at different times. The construction is a mixture of cross vaults in some areas and I beams and plain Concrete with boulders in other areas. The thickness of the walls is about 60 cm.

##### (2) CURRENT CONDITION AND RESTORATION MEASURES.

Major cracks are visible from the outside and the inside. These are clearly structural cracks that extend all the way through. Some of the vaults are also spalling. Some shops seem to have maintained the vaults and thus are in adequate state. The slab I Beams are rusty in the second floor. Generally speaking the building is in a poor condition. Damping is obvious and roots of trees have grown in the fill above the vault. Long balcony is in need of retrofit. The repair of the building requires:-

- a. Apply new mortar to deteriorated parts. Stainless steel plates may be used in the mortar joints to provide ductility for wall.
- b. Build a new reinforced concrete tie beam around top perimeter of building with dowels into the walls to guarantee confinement for walls with slab. This should be done where geometry allows.
- c. Construct a new reinforced concrete wall with a thickness of 15 cm behind stone to provide a lateral load support system. This should be tied where possible to existing wall. Shotcrete with wire mesh may be used to support. Spalling vaults and may be tied to the newly constructed wall, particularly in the most affected northern corner of the building.

Project:  
Tourism Sector Development Project  
in the Hashemite Kingdom of Jordan

Executing Agency  
The Ministry of Tourism and Antiquities  
The Ministry of Planning

SUB-PROJECT:  
Karak Tourism Development Project  
Tourist Street

Note:  
This detailed design has been executed by a team of consultants as shown below in accordance with the agreement between Japan International Cooperation Agency (JICA) and JICA Study Team.  
The copyright of this drawing rests with JICA .

Designed by:  
Japan International Cooperation Agency (JICA)

JICA Study Team:  
Joint Venture of  
Pacific Consultants International and  
Yamasita Sekkei Inc.

Subcontracted Local Consultant:

 **consolidated consultants**  
engineering & environment  
Tel: 4612377 - Fax: 4612380 - AMMAN - JORDAN

Detailed Building  
Survey  
Drawing Title:

Scale: N.T.S. Drawing No.:

N.T.S.

DBS-SH 0011

192



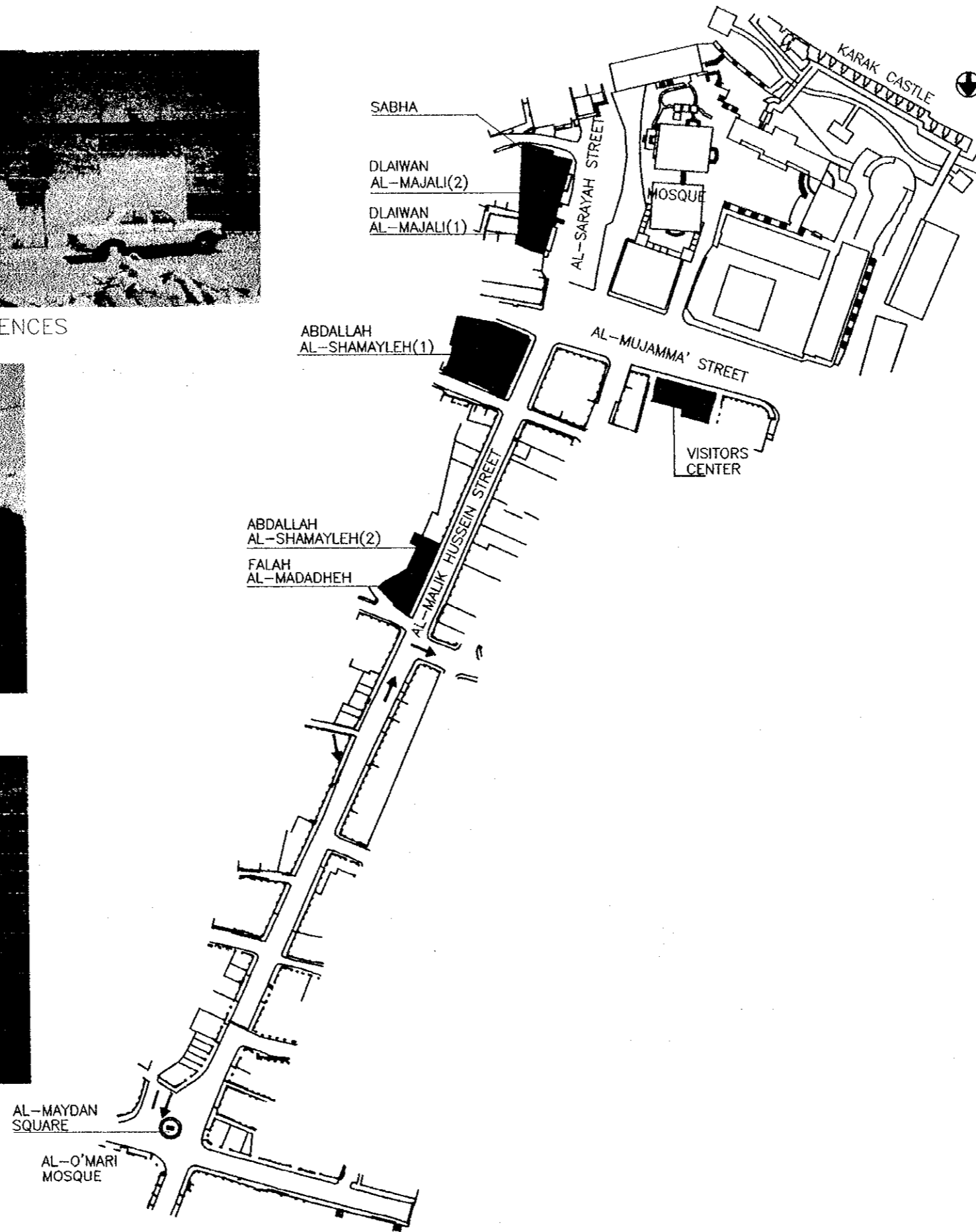
DLAIWAN AL-MAJALI (1+2), SABHA RESIDENCES



ABDALLAH AL-SHAMAYLEH(1)



FALAH AL-MADADHEH

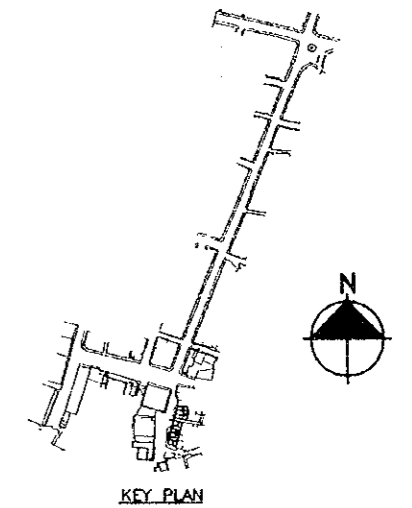


Project:  
Tourism Sector Development Project  
in the Hashemite Kingdom of Jordan

Executing Agency  
The Ministry of Tourism and Antiquities  
The Ministry of Planning

SUB-PROJECT:  
Karak Tourism Development Project  
Tourist Street

Note:  
This detailed design has been executed by  
a team of consultants as shown below in  
accordance with the agreement between  
Japan International Cooperation Agency  
(JICA) and JICA Study Team.  
  
The copyright of this drawing rests with  
JICA .



Designed by:  
Japan International Cooperation  
Agency (JICA)

JICA Study Team:  
Joint Venture of  
Pacific Consultants International and  
Yamasita Sekkei Inc.

Subcontracted Local Consultant:

**consolidated consultants**  
engineering & environment  
Tel: 4612377 - Fax: 4612380 - AMMAN - JORDAN

**DETAILED BUILDING SURVEY**

Drawing Title:

Scale:  
N.T.S.

Drawing No.:  
DB.S.-SH1-001TP

193

Recommended pilot project at Al Shamaileh building / Al Sunna'

### DETAILED PROJECT AREA

Built up area: ground floor 280 m<sup>2</sup>  
First floor 236 m<sup>2</sup>  
Basement 120 m<sup>2</sup>

Plot area: 550 m<sup>2</sup>  
Number of floors: two floors and basement.  
Date of building: late nineteenth century

### CRITERIA FOR ALLOCATING AL SHAMAILEH BUILDING AS A DETAILED PILOT PROJECT

- Prominence at corner of Malik Hussein Street.
- Representation of a traditional building type; residential quarters on top of shops.
- Potential success as a pilot project: abandoned sections, one owner ... etc.

### CRITERIA FOR REHABILITATION

- Maintain mixed use for building / proposed guesthouse & services in addition to existing shops.
- Develop appropriate criteria for physical rehabilitation and structural stabilization, internal & external . finishes, provision of amenities, ... etc.
- Investigate developing appropriate financial tools; tax concessions for private owners and users, loads at favourable rates, etc. should be made available to owners and users carrying out rehabilitation projects as per plans provided by the appropriate authorities.
- Encourage group investments (made by collective or individual owners and the inhabitants and or users) and or in partnership with private investors or municipal and other bodies.

Project:  
Tourism Sector Development Project  
in the Hashemite Kingdom of Jordan

Executing Agency  
The Ministry of Tourism and Antiquities  
The Ministry of Planning

SUB-PROJECT:  
Karak Tourism Development Project  
Tourist Street

Note:  
This detailed design has been executed by a team of consultants as shown below in accordance with the agreement between Japan International Cooperation Agency (JICA) and JICA Study Team.  
The copyright of this drawing rests with JICA .

Designed by:  
Japan International Cooperation Agency (JICA)

JICA Study Team:  
Joint Venture of  
Pacific Consultants International and  
Yamasita Sekkei Inc.

Subcontracted Local Consultant:

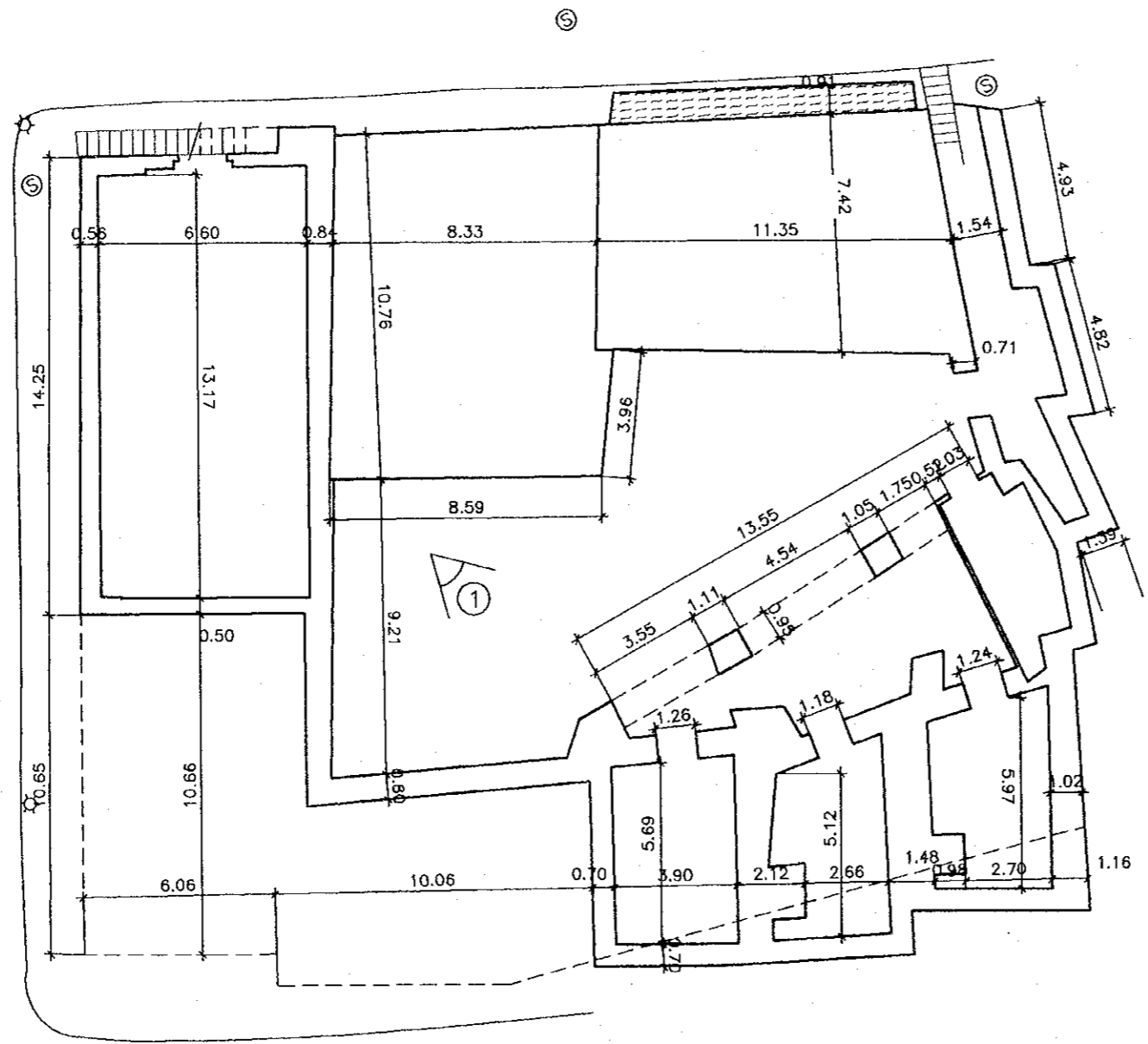
 **consolidated consultants**  
engineering & environment  
Tel: 4612377 - Fax: 4612380 - AMMAN - JORDAN

**DETAILED BUILDING  
SURVEY**  
Drawing Title:

Scale: **N.T.S** Drawing No.: **DB.S-SH1 002T**

198

1



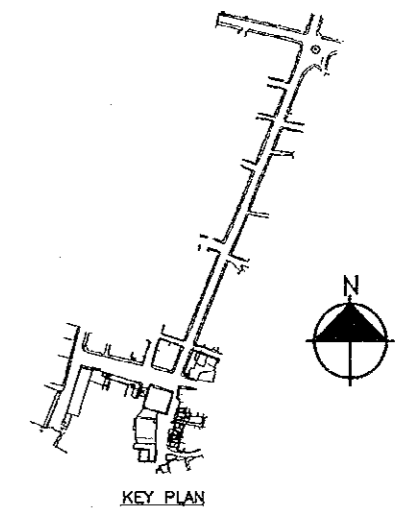
**BASEMENT FLOOR PLAN**  
**AL- SHAMAYLEH (1)**

Project:  
Tourism Sector Development Project  
in the Hashemite Kingdom of Jordan

Executing Agency  
The Ministry of Tourism and Antiquities  
The Ministry of Planning

SUB-PROJECT:  
Karak Tourism Development Project  
Tourist Street

Note:  
This detailed design has been executed by a team of consultants as shown below in accordance with the agreement between Japan International Cooperation Agency (JICA) and JICA Study Team.  
The copyright of this drawing rests with JICA .



Designed by:  
Japan International Cooperation Agency (JICA)

JICA Study Team:  
Joint Venture of  
Pacific Consultants International and  
Yamasita Sekkei Inc.

Subcontracted Local Consultant:

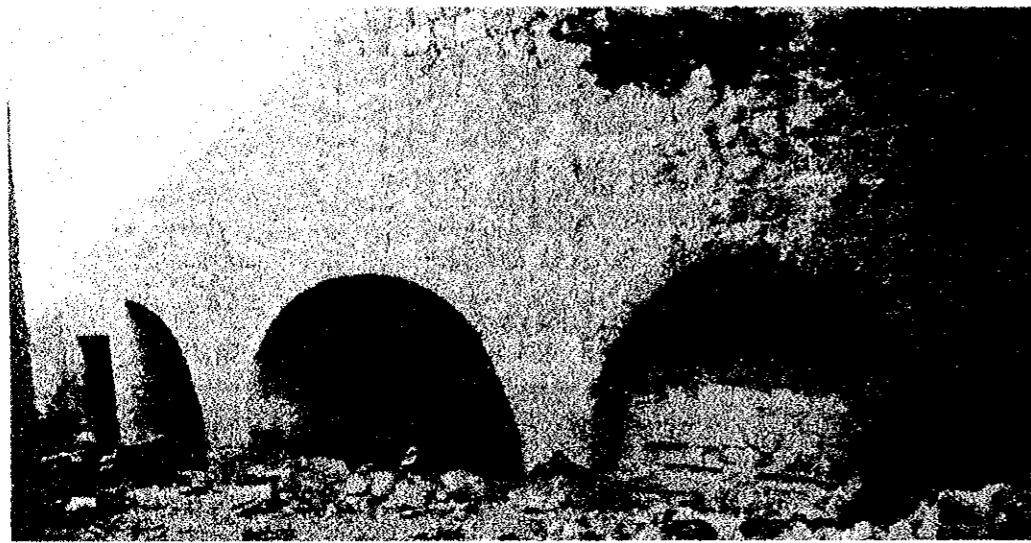


**DETAILED BUILDING SURVEY**

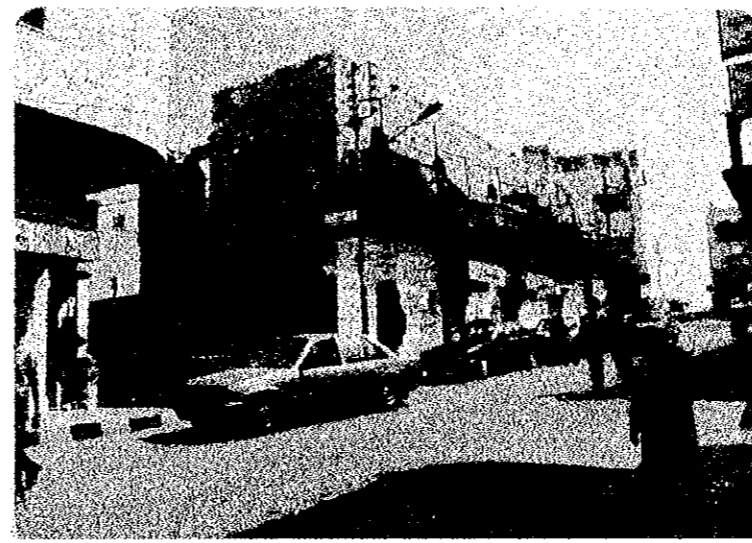
Drawing Title:

Scale: 1/200      Drawing No.: DB.S-SH1-001

181



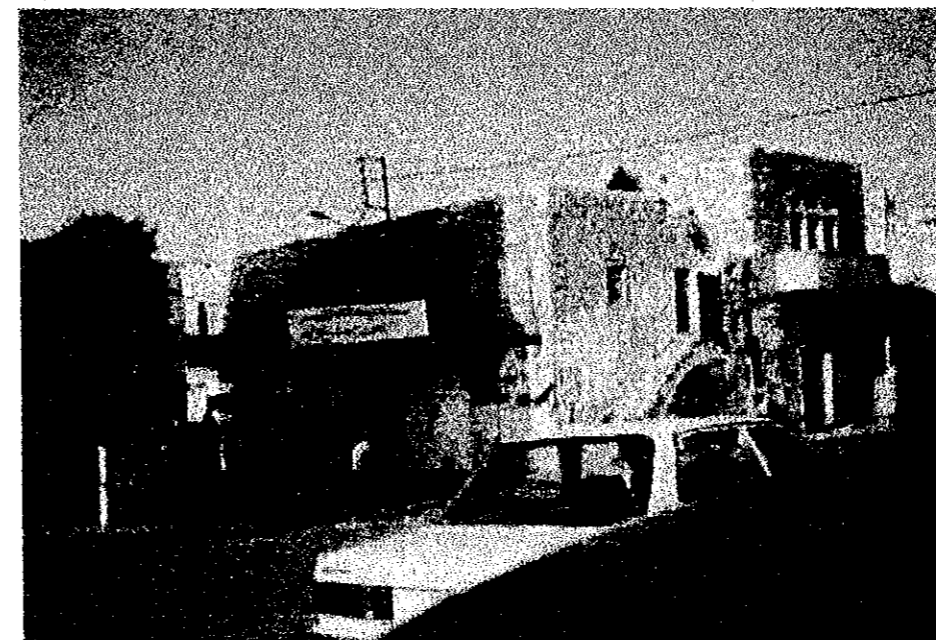
*PHOTO NO. (3)*



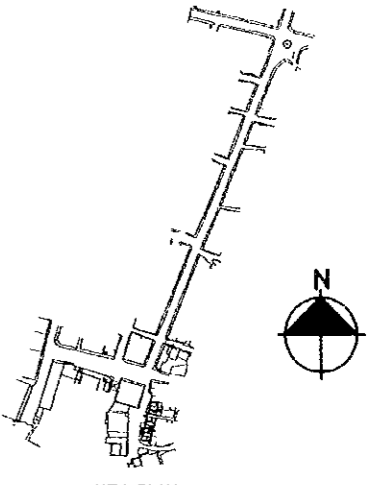
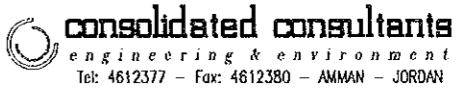
*PHOTO NO. (2)*



*PHOTO NO. (3)*  
*AL-SHAMAYLEH BUILDING*  
*EARLY TWENTIETH CENTURY*

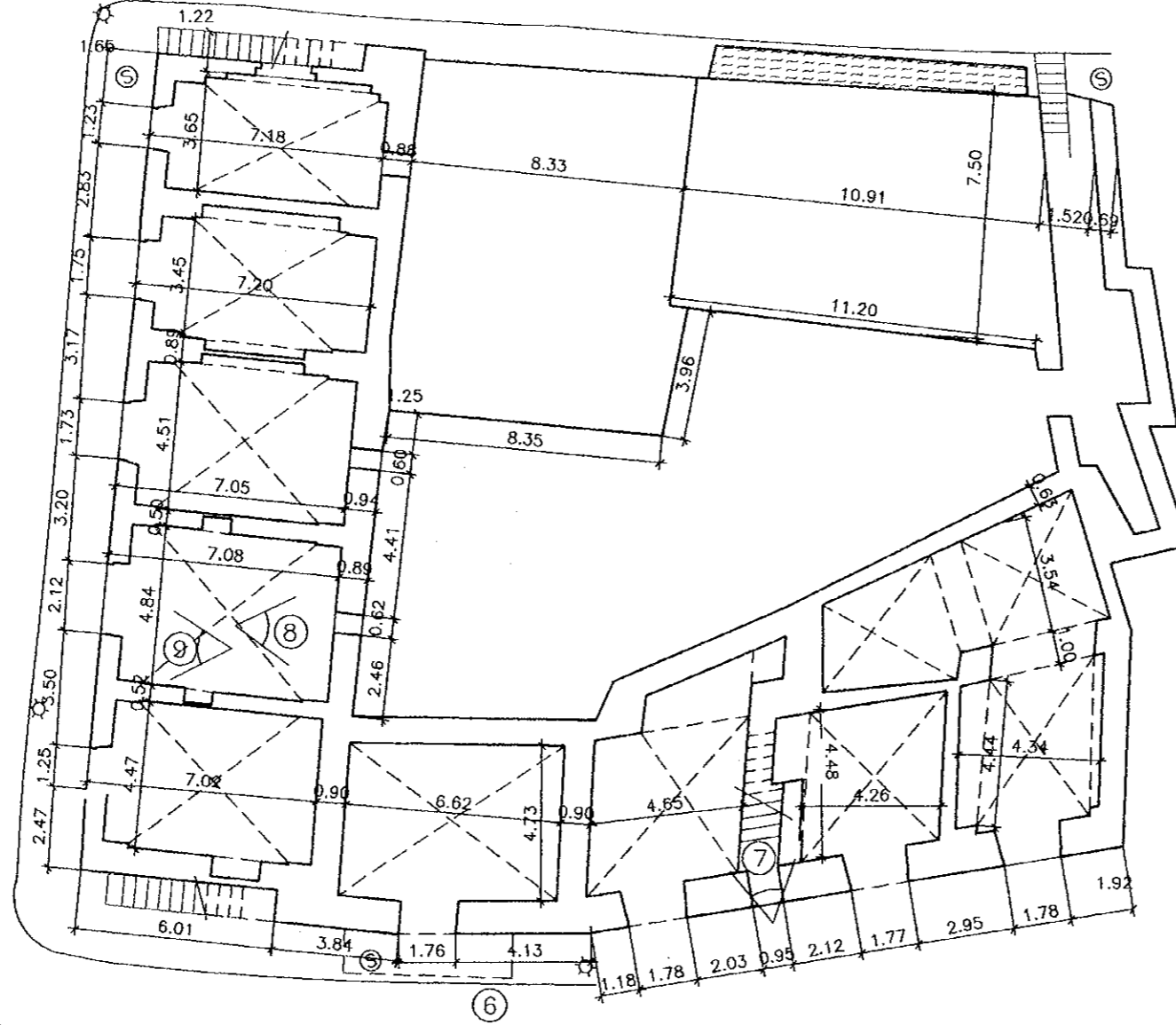


*PHOTO NO. (3)*  
*AL-SHAMAYLEH BUILDING 1999*

Project: Tourism Sector Development Project in the Hashemite Kingdom of Jordan	
Executing Agency The Ministry of Tourism and Antiquities The Ministry of Planning	
SUB-PROJECT: Karak Tourism Development Project Tourist Street	
Note: This detailed design has been executed by a team of consultants as shown below in accordance with the agreement between Japan International Cooperation Agency (JICA) and JICA Study Team.  The copyright of this drawing rests with JICA .	
 <p>KEY PLAN</p>	
Designed by: Japan International Cooperation Agency (JICA)	
JICA Study Team: Joint Venture of Pacific Consultants International and Yamasita Sekkei Inc.	
Subcontracted Local Consultant: 	
<i>DETAILED BUILDING SURVEY</i>	
Drawing Title:	
Scale: <b>N.T.S.</b>	Drawing No.: <b>DB.S.-SH1-001P</b>

767

②



④

③

⑤

**GROUND FLOOR PLAN**  
**AL-SHAMAYLEH (1)**

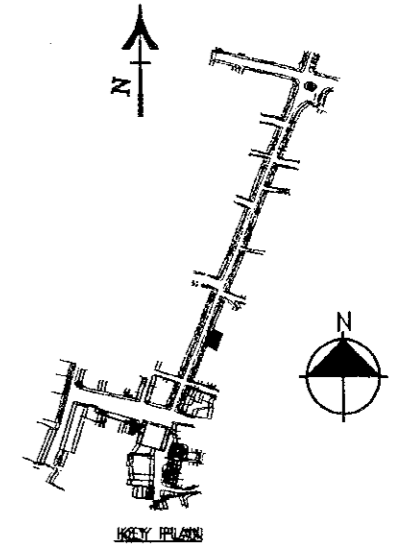
Project:  
 Tourism Sector Development Project  
 in the Hashemite Kingdom of Jordan

Executing Agency  
 The Ministry of Tourism and Antiquities  
 The Ministry of Planning

SUB-PROJECT:  
 Karak Tourism Development Project  
 Tourist Street

Note:  
 This detailed design has been executed by  
 a team of consultants as shown below in  
 accordance with the agreement between  
 Japan International Cooperation Agency  
 (JICA) and JICA Study Team.

The copyright of this drawing rests with  
 JICA .



Designed by:  
 Japan International Cooperation  
 Agency (JICA)

JICA Study Team:  
 Joint Venture of  
 Pacific Consultants International and  
 Yamasita Sekkei Inc.

Subcontracted Local Consultant:

**consolidated consultants**  
 engineering & environment  
 Tel: 4612377 - Fax: 4612380 - AMMAN - JORDAN

**DETAILED BUILDING SURVEY**

Drawing Title:

Scale: 1/200

Drawing No.: DB.S.-SH1-002

461

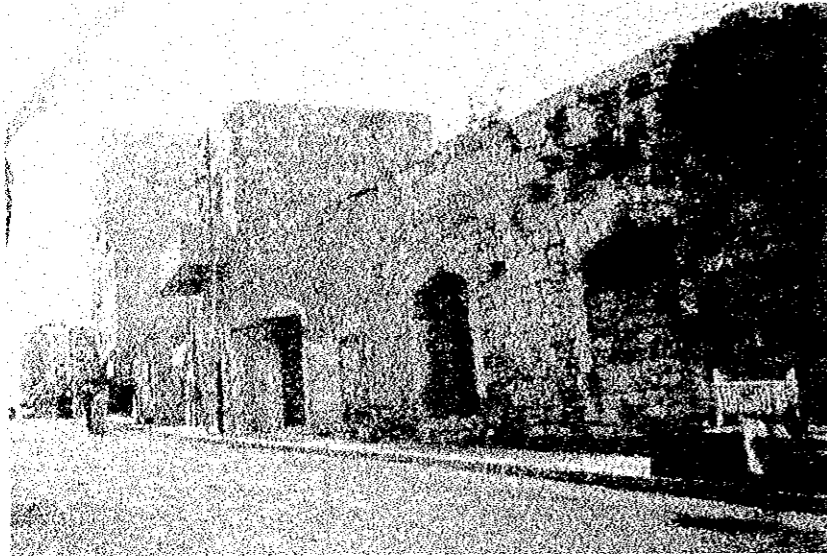


PHOTO NO. (4)



PHOTO NO. (5)

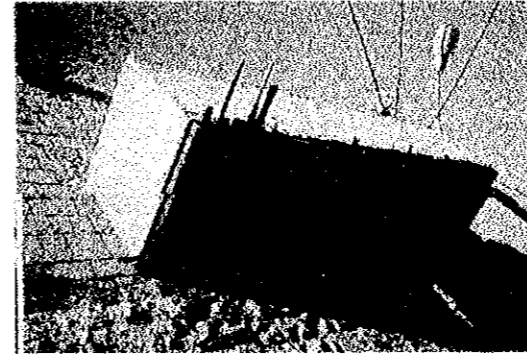


PHOTO NO. (6)



PHOTO NO. (7)



PHOTO NO. (8)



PHOTO NO. (9)

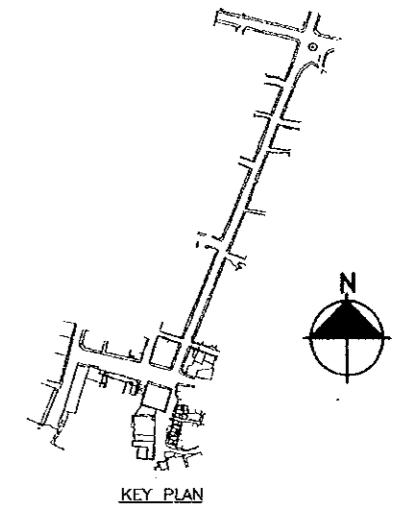
Project:  
Tourism Sector Development Project  
in the Hashemite Kingdom of Jordan

Executing Agency  
The Ministry of Tourism and Antiquities  
The Ministry of Planning

SUB-PROJECT:  
Karak Tourism Development Project  
Tourist Street

Note:  
This detailed design has been executed by  
a team of consultants as shown below in  
accordance with the agreement between  
Japan International Cooperation Agency  
(JICA) and JICA Study Team.


The copyright of this drawing rests with  
JICA .



Designed by:  
Japan International Cooperation  
Agency (JICA)

JICA Study Team:  
Joint Venture of  
Pacific Consultants International and  
Yamasita Sekkei Inc.

Subcontracted Local Consultant:

 **consolidated consultants**  
engineering & environment  
Tel: 4612377 - Fax: 4612380 - AMMAN - JORDAN

*DETAILED BUILDING SURVEY*

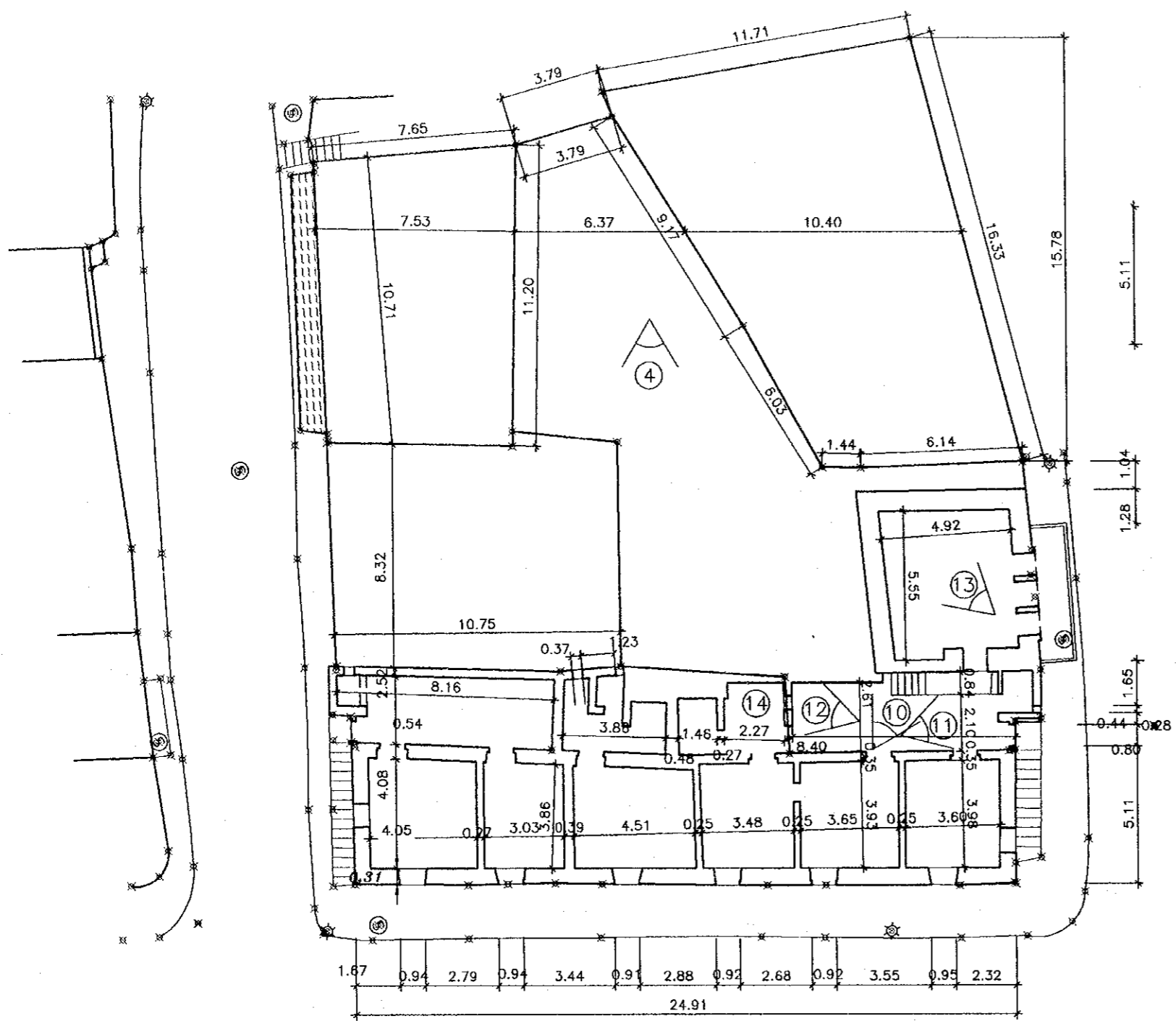
Drawing Title:

Scale:  
**N.T.S.**

Drawing No.:  
**DB.S.-SH1-002P**

187





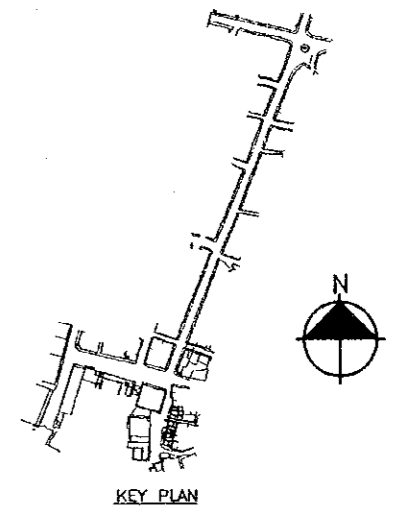
**FIRST FLOOR PLAN**  
**AL-SHAMAYLEH (1)**

Project:  
Tourism Sector Development Project  
in the Hashemite Kingdom of Jordan

Executing Agency  
The Ministry of Tourism and Antiquities  
The Ministry of Planning

SUB-PROJECT:  
Karak Tourism Development Project  
Tourist Street

Note:  
This detailed design has been executed by  
a team of consultants as shown below in  
accordance with the agreement between  
Japan International Cooperation Agency  
(JICA) and JICA Study Team.  
The copyright of this drawing rests with  
JICA .



Designed by:  
Japan International Cooperation  
Agency (JICA)

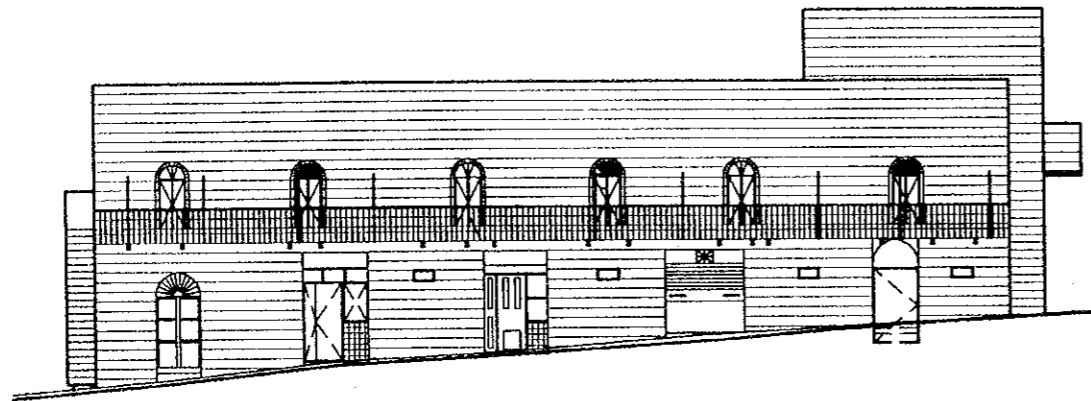
JICA Study Team:  
Joint Venture of  
Pacific Consultants International and  
Yamasita Sekkei Inc.

Subcontracted Local Consultant:  
**consolidated consultants**  
engineering & environment  
Tel: 4612377 - Fax: 4612380 - AMMAN - JORDAN

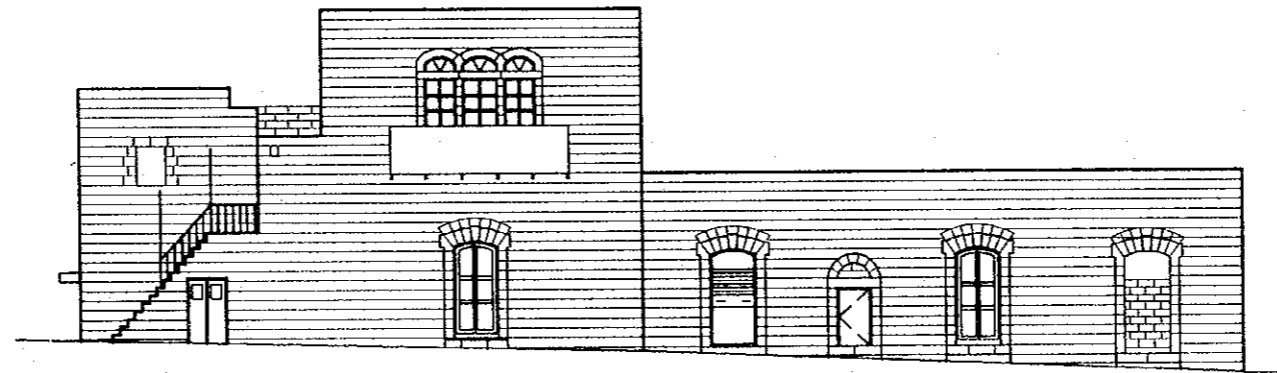
**DETAILED BUILDING SURVEY**  
Drawing Title:

Scale: 1/200 Drawing No.: DB.S.-SH1-003

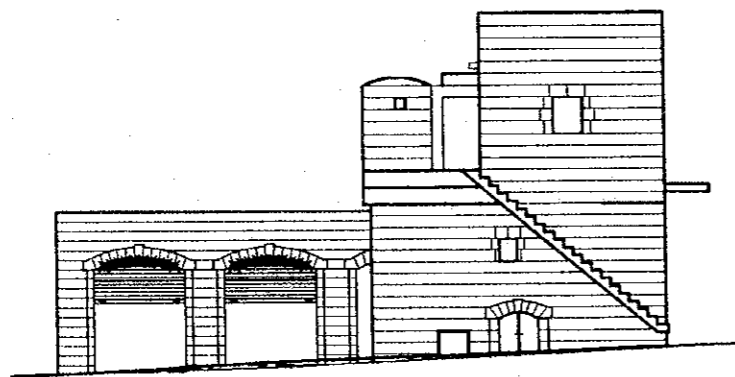
199



WEST ELEVATION



SOUTH ELEVATION



NOURTH ELEVATION

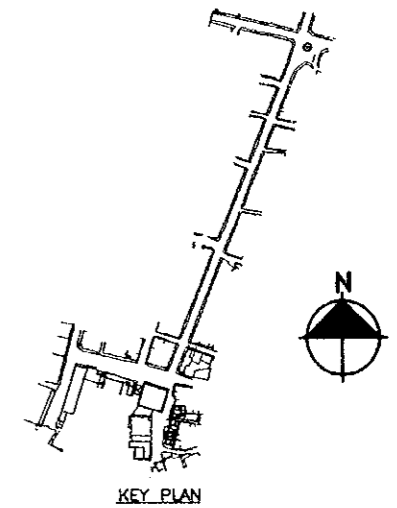
Project:  
Tourism Sector Development Project  
in the Hashemite Kingdom of Jordan

Executing Agency  
The Ministry of Tourism and Antiquities  
The Ministry of Planning

SUB-PROJECT:  
Karak Tourism Development Project  
Tourist Street

Note:  
This detailed design has been executed by  
a team of consultants as shown below in  
accordance with the agreement between  
Japan International Cooperation Agency  
(JICA) and JICA Study Team.

The copyright of this drawing rests with  
JICA .



Designed by:  
Japan International Cooperation  
Agency (JICA)

JICA Study Team:  
Joint Venture of  
Pacific Consultants International and  
Yamasita Sekkei Inc.

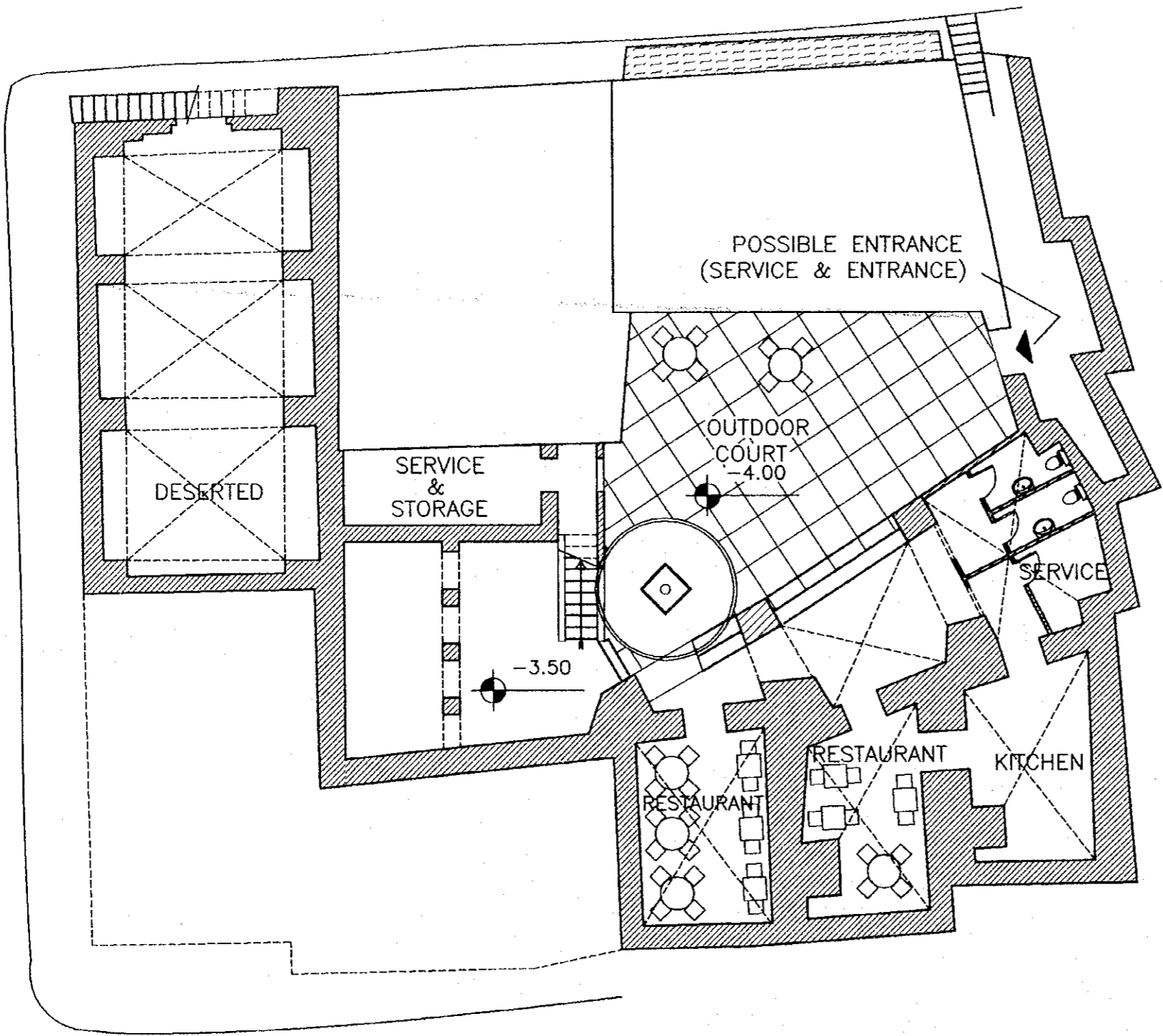
Subcontracted Local Consultant:

**consolidated consultants**  
engineering & environment  
Tel: 4612377 -- Fax: 4612380 -- AMMAN -- JORDAN

**DETAILED BUILDING SURVEY**  
Drawing Title:

Scale: 1/200 | Drawing No.: DB.S.-SH1-004

200  
200



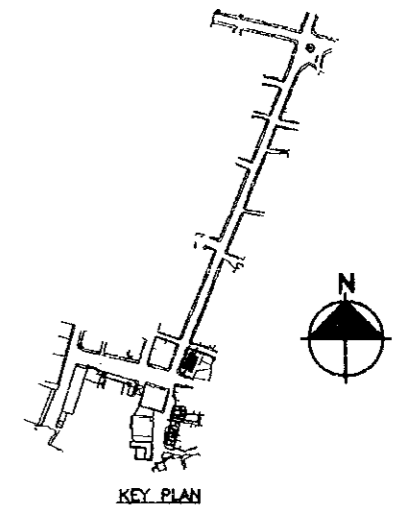
REHABILITATION OF AL-SHAMAILEH BUILDING  
 BASEMENT FLOOR PLAN  
 (RESTUARANT AND SERVICES)

Project:  
 Tourism Sector Development Project  
 in the Hashemite Kingdom of Jordan

Executing Agency  
 The Ministry of Tourism and Antiquities  
 The Ministry of Planning

SUB-PROJECT:  
 Karak Tourism Development Project  
 Tourist Street

Note:  
 This detailed design has been executed by  
 a team of consultants as shown below in  
 accordance with the agreement between  
 Japan International Cooperation Agency  
 (JICA) and JICA Study Team.  
 The copyright of this drawing rests with  
 JICA .



Designed by:  
 Japan International Cooperation  
 Agency (JICA)

JICA Study Team:  
 Joint Venture of  
 Pacific Consultants International and  
 Yamasita Sekkei Inc.

Subcontracted Local Consultant:

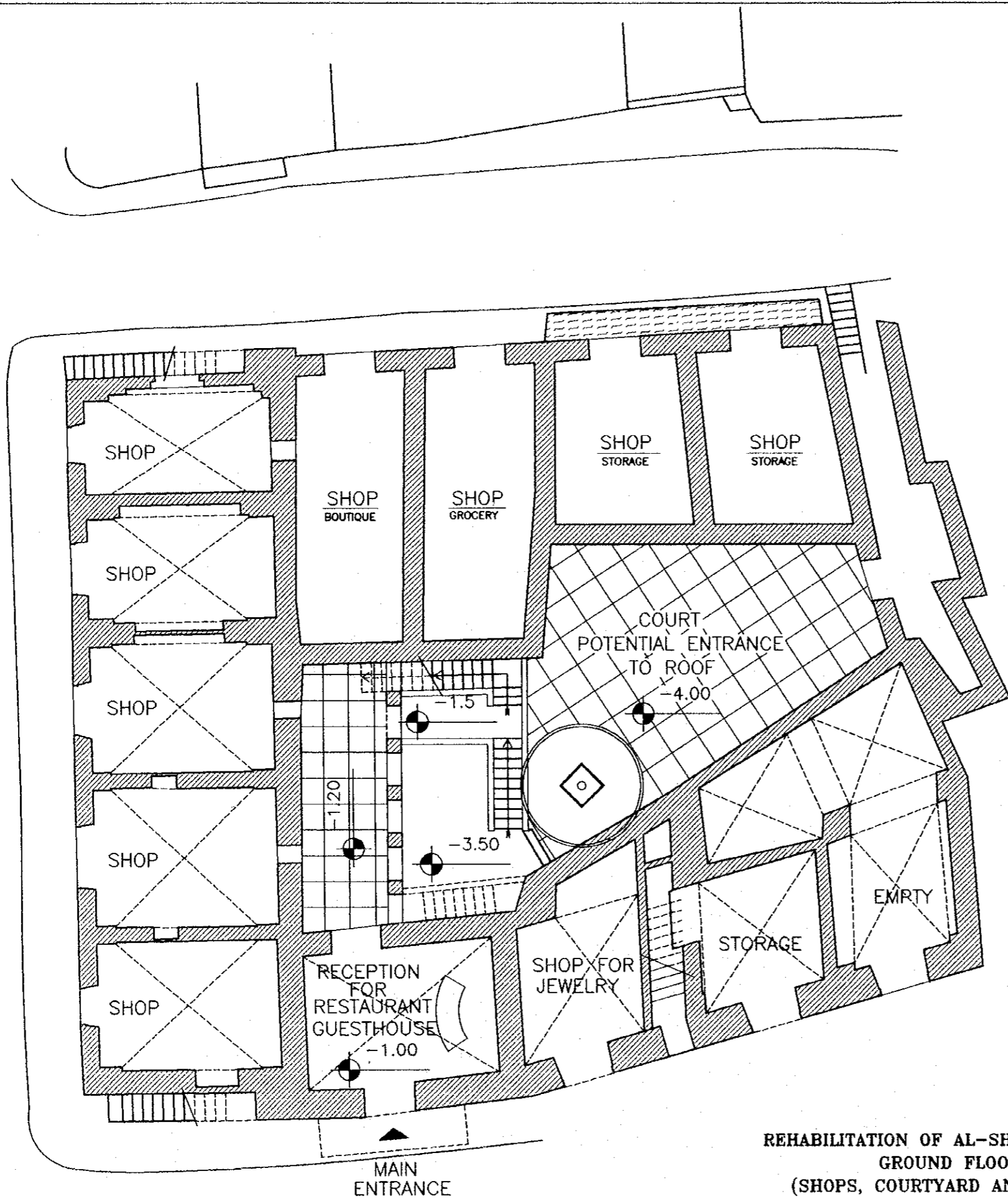
**consolidated consultants**  
 engineering & environment  
 Tel: 4612377 - Fax: 4612380 - AMMAN - JORDAN

**DETAILED BUILDING SURVEY**

Drawing Title:

Scale: 1/200

Drawing No.:  
 D.B.S.-SH1-005



REHABILITATION OF AL-SHAMAILEH BUILDING  
GROUND FLOOR PLAN  
(SHOPS, COURTYARD AND RESTUARANT)

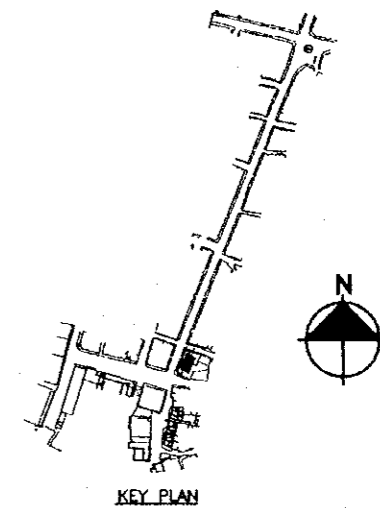
Project:  
Tourism Sector Development Project  
in the Hashemite Kingdom of Jordan

Executing Agency  
The Ministry of Tourism and Antiquities  
The Ministry of Planning

SUB-PROJECT:  
Karak Tourism Development Project  
Tourist Street

Note:  
This detailed design has been executed by  
a team of consultants as shown below in  
accordance with the agreement between  
Japan International Cooperation Agency  
(JICA) and JICA Study Team.

The copyright of this drawing rests with  
JICA .



Designed by:  
Japan International Cooperation  
Agency (JICA)

JICA Study Team:  
Joint Venture of  
Pacific Consultants International and  
Yamasita Sekkei Inc.

Subcontracted Local Consultant:

**consolidated consultants**  
engineering & environment  
Tel: 4612377 - Fax: 4612380 - AMMAN - JORDAN

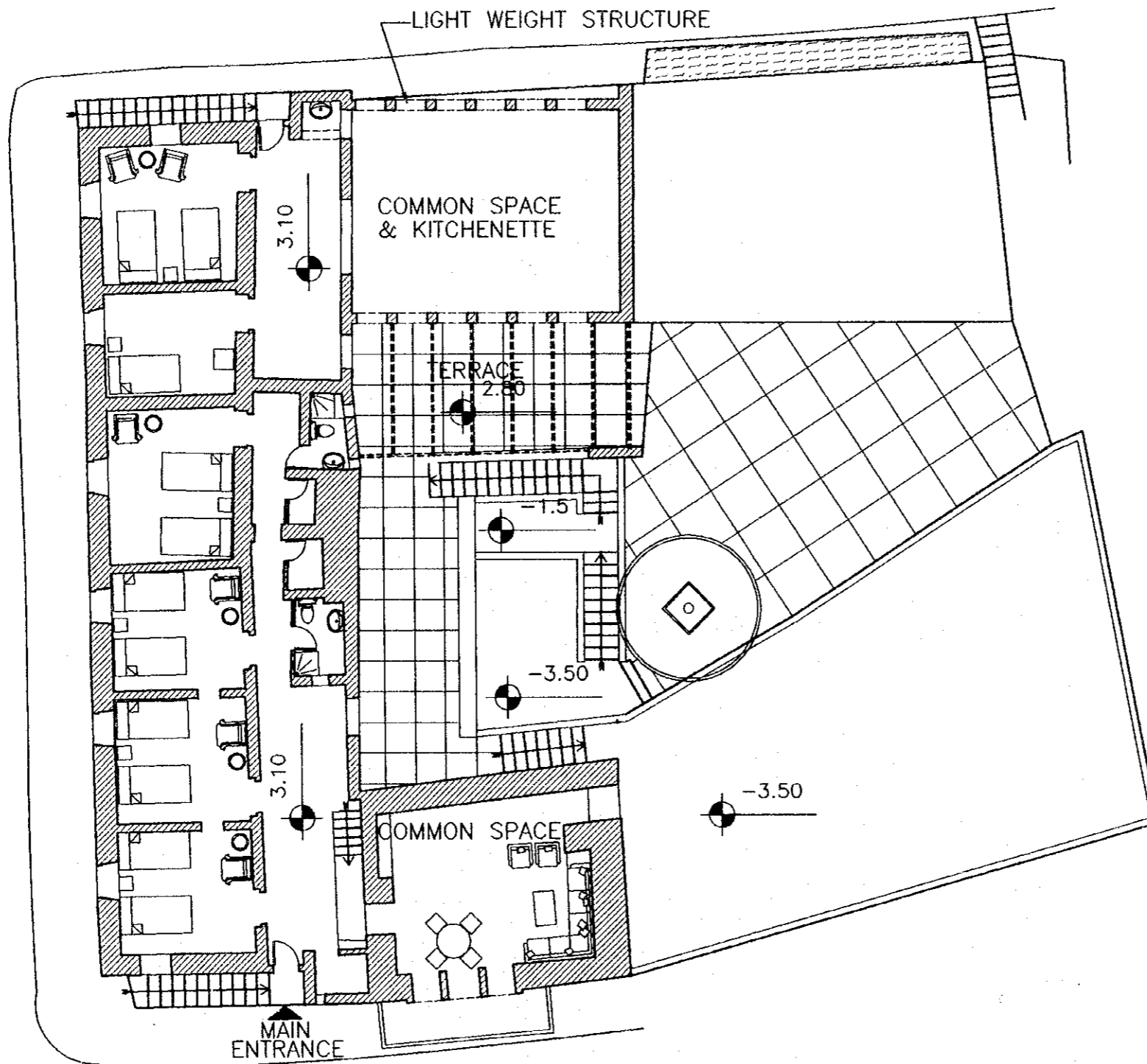
**DETAILED BUILDING SURVEY**

Drawing Title:

Scale: 1/200

Drawing No.: DB.S.-SH1-006

2002



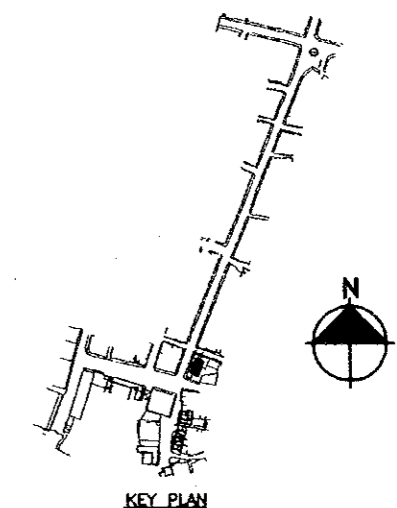
REHABILITATION OF AL-SHAMAILEH BUILDING  
 FIRST FLOOR PLAN  
 (5 DOUBLL GUEST BEDROOM, INGLE GUEST BEDROOM)

Project:  
 Tourism Sector Development Project  
 in the Hashemite Kingdom of Jordan

Executing Agency  
 The Ministry of Tourism and Antiquities  
 The Ministry of Planning

SUB-PROJECT:  
 Karak Tourism Development Project  
 Tourist Street

Note:  
 This detailed design has been executed by  
 a team of consultants as shown below in  
 accordance with the agreement between  
 Japan International Cooperation Agency  
 (JICA) and JICA Study Team.  
 The copyright of this drawing rests with  
 JICA .



Designed by:  
 Japan International Cooperation  
 Agency (JICA)

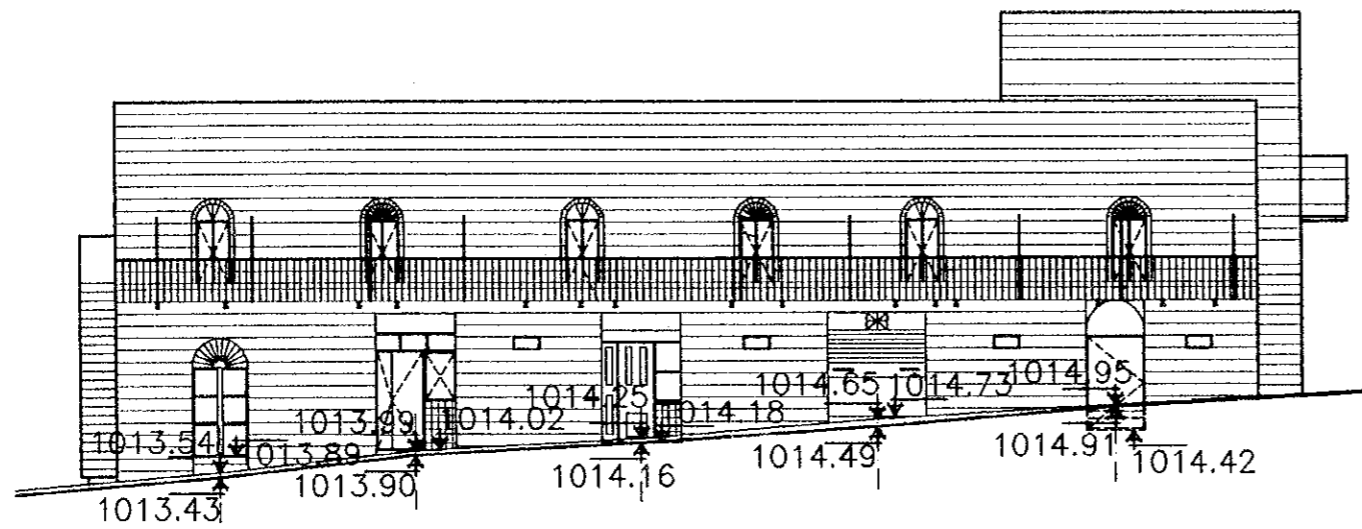
JICA Study Team:  
 Joint Venture of  
 Pacific Consultants International and  
 Yamasita Sekkei Inc.

Subcontracted Local Consultant:

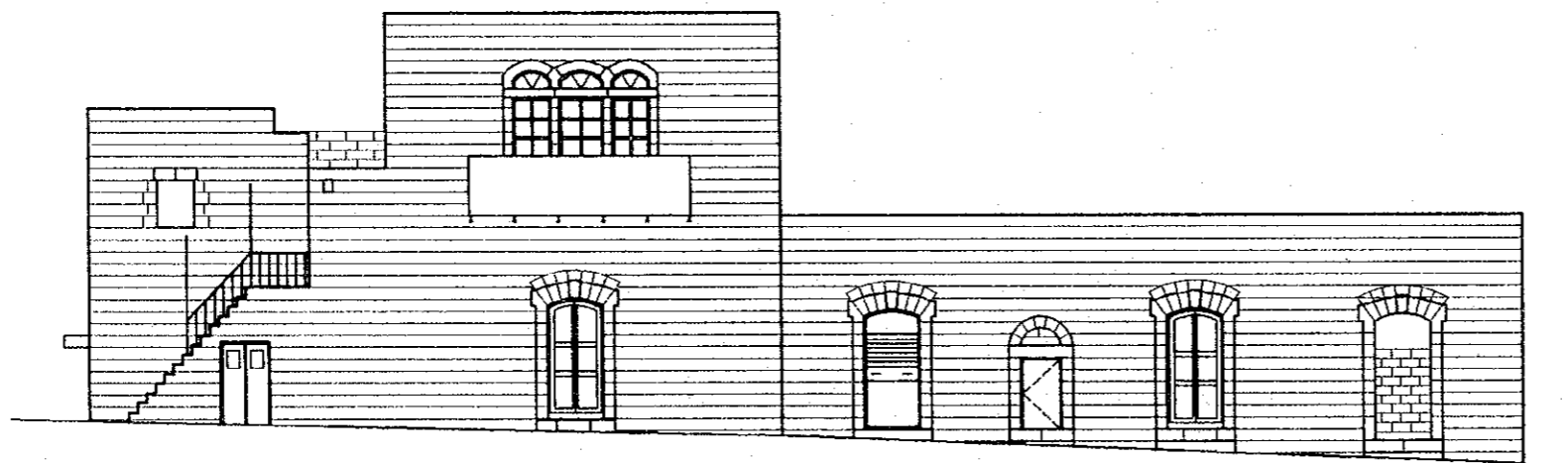


**DETAILED BULDING SURVEY**  
 Drawing Title:

Scale: 1/200 Drawing No.: DB.S.-SH1-007



**WEST ELEVATION**



**SOUTH ELEVATION**

**REHABILITATION OF AL-SHAMAILEH BUILDING  
ELEVATIONS**

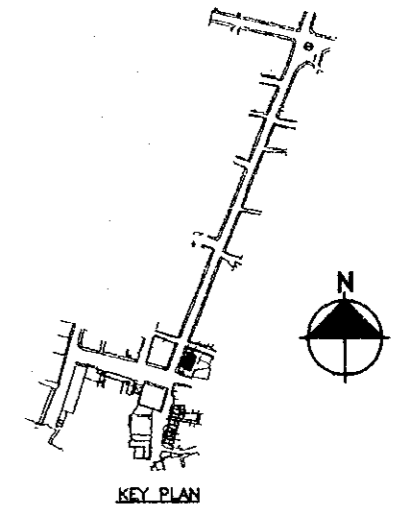
Project:  
Tourism Sector Development Project  
in the Hashemite Kingdom of Jordan

Executing Agency  
The Ministry of Tourism and Antiquities  
The Ministry of Planning

SUB-PROJECT:  
Karak Tourism Development Project  
Tourist Street

Note:  
This detailed design has been executed by  
a team of consultants as shown below in  
accordance with the agreement between  
Japan International Cooperation Agency  
(JICA) and JICA Study Team.

The copyright of this drawing rests with  
JICA .



**KEY PLAN**

Designed by:  
Japan International Cooperation  
Agency (JICA)

JICA Study Team:  
Joint Venture of  
Pacific Consultants International and  
Yamasita Sekkei Inc.

Subcontracted Local Consultant:

**consolidated consultants**  
engineering & environment  
Tel: 4612377 - Fax: 4612380 - AMMAN - JORDAN

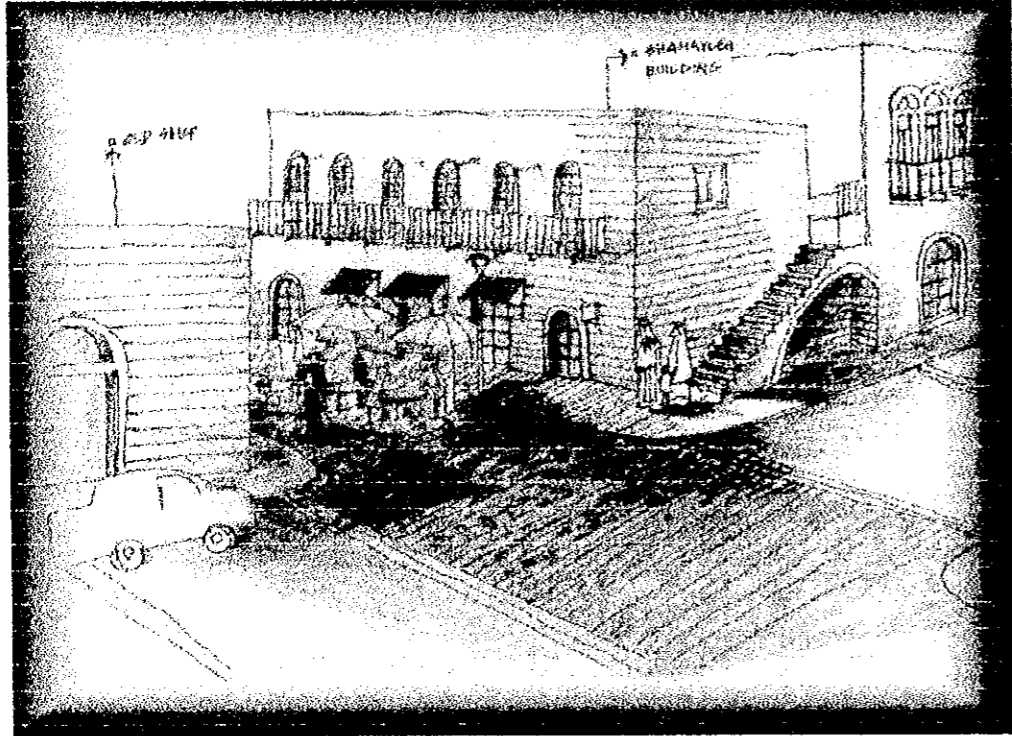
**DETAILED BUILDING SURVEY**

Drawing Title:

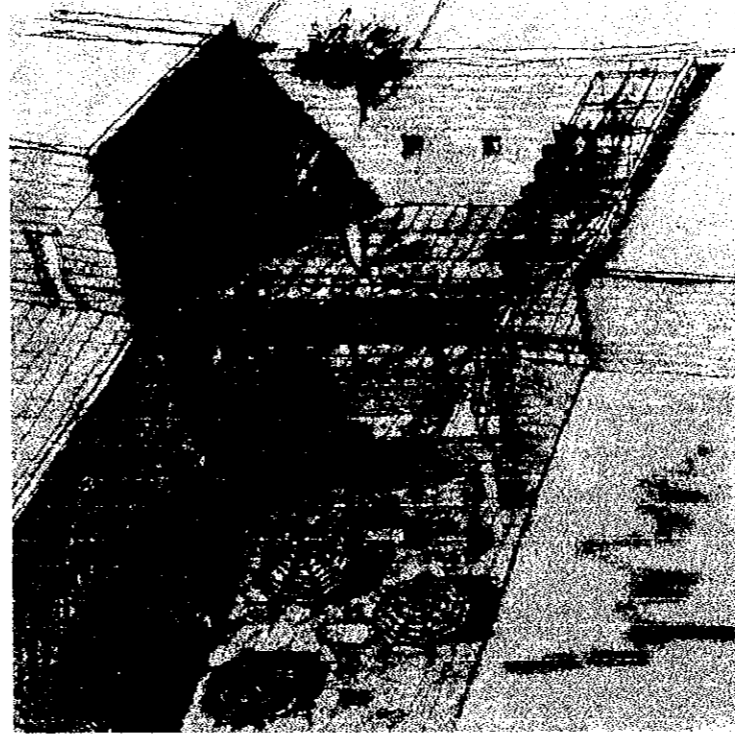
Scale: 1/200

Drawing No.:  
DB.S-SH1-008

for



PROPOSED SOLUTION



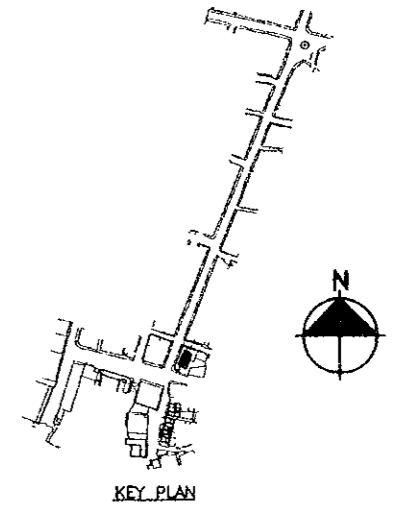
PROPOSED SOLUTION  
FOR OPEN COUTYARD

Project:  
Tourism Sector Development Project  
in the Hashemite Kingdom of Jordan

Executing Agency  
The Ministry of Tourism and Antiquities  
The Ministry of Planning

SUB-PROJECT:  
Karak Tourism Development Project  
Tourist Street


Note:  
This detailed design has been executed by  
a team of consultants as shown below in  
accordance with the agreement between  
Japan International Cooperation Agency  
(JICA) and JICA Study Team.  
The copyright of this drawing rests with  
JICA .



Designed by:  
Japan International Cooperation  
Agency (JICA)

JICA Study Team:  
Joint Venture of  
Pacific Consultants International and  
Yamasita Sekkei Inc.

Subcontracted Local Consultant:

 **consolidated consultants**  
engineering & environment  
Tel: 4612377 - Fax: 4612380 - AMMAN - JORDAN

**DETAILED BUILDING SURVEY**  
Drawing Title:

Scale: 1/200 Drawing No.: DB.S.-SH1-009

YAC