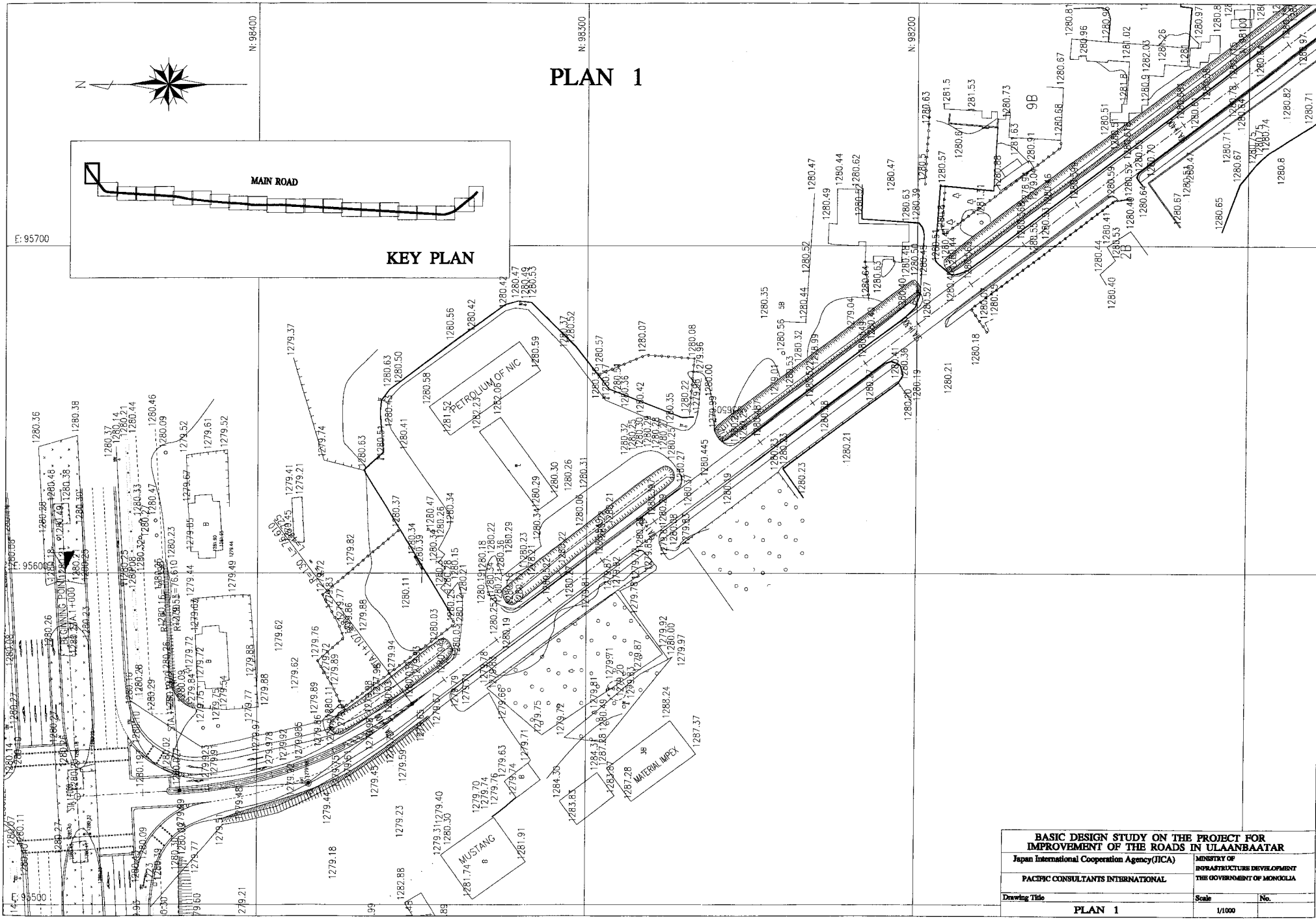
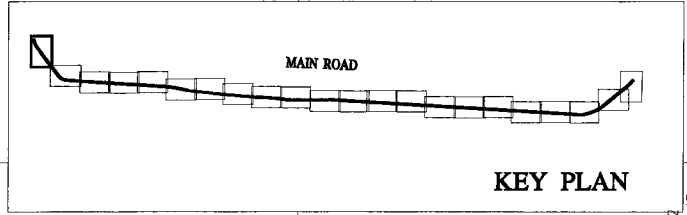


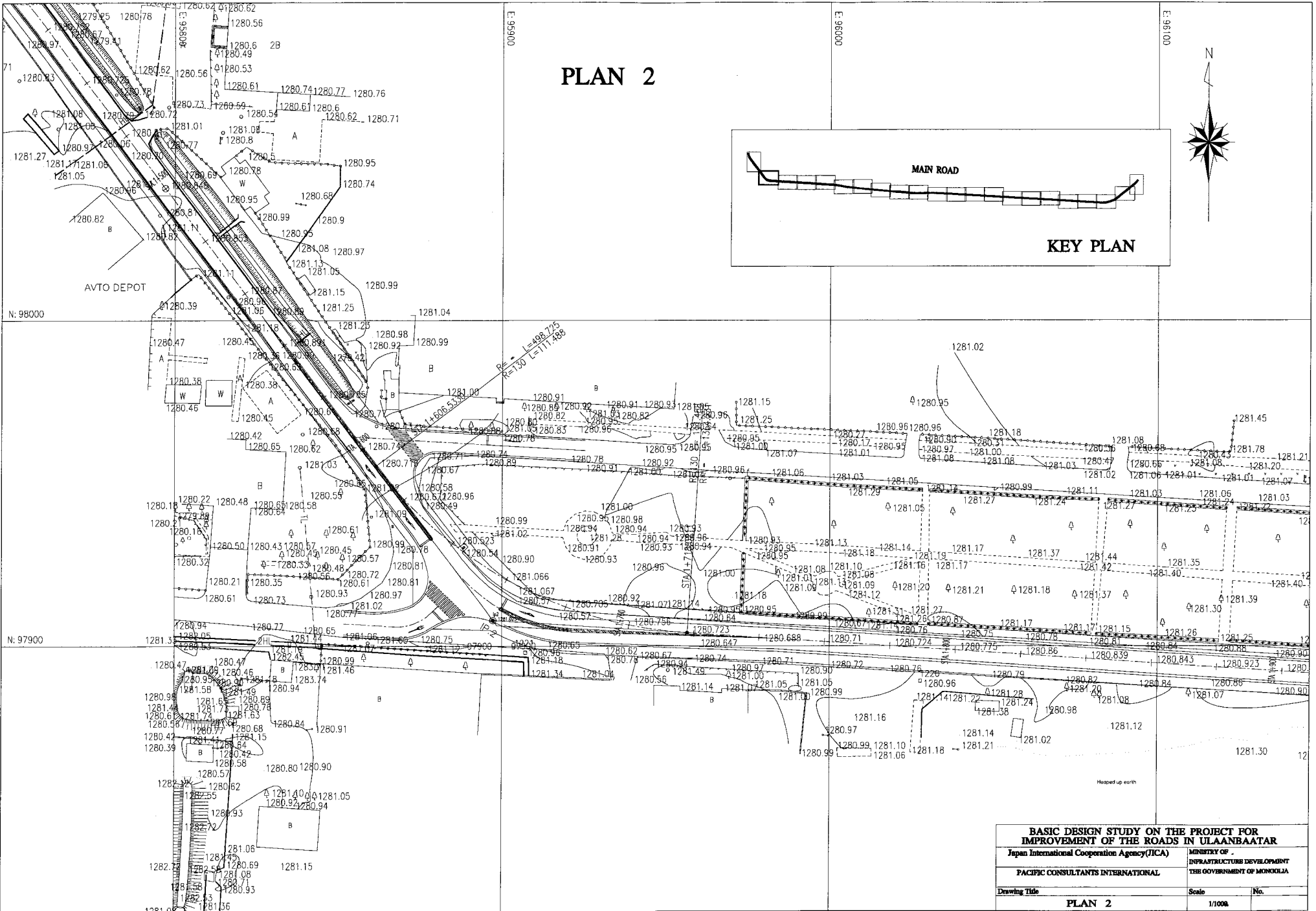
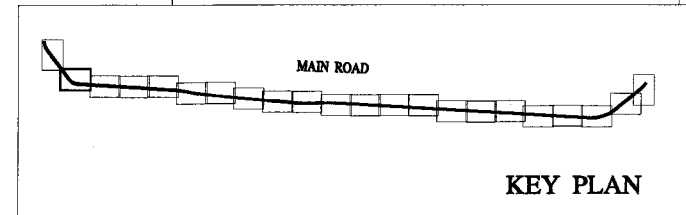
6-7: Basic Design Drawings

PLAN 1



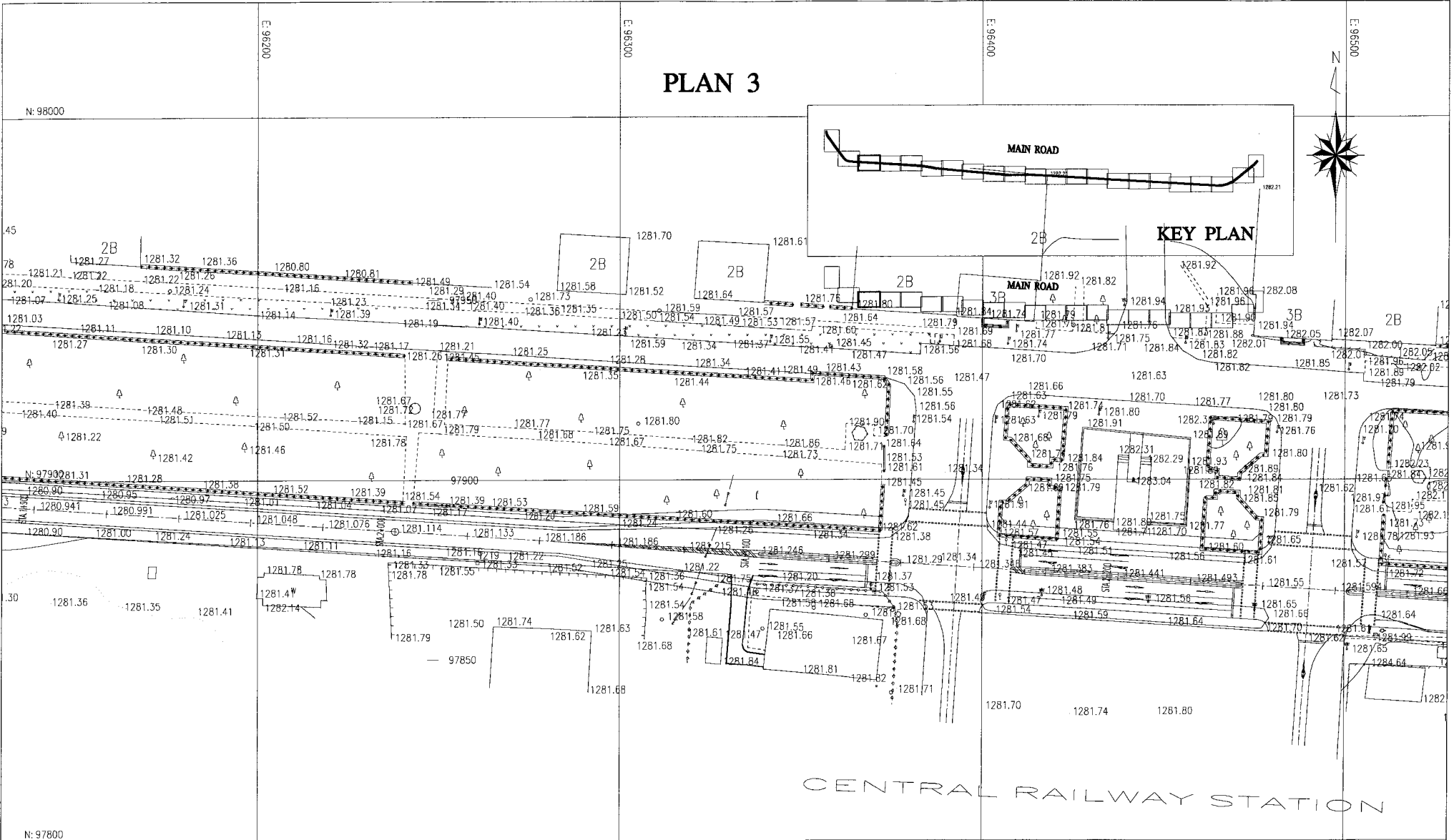
BASIC DESIGN STUDY ON THE PROJECT FOR IMPROVEMENT OF THE ROADS IN ULANBAATAR	
Japan International Cooperation Agency (JICA)	INSTITUTE OF INFRASTRUCTURE DEVELOPMENT THE GOVERNMENT OF MONGOLIA
PACIFIC CONSULTANTS INTERNATIONAL	
Drawing Title	Scale No.
PLAN 1	1/1000

PLAN 2

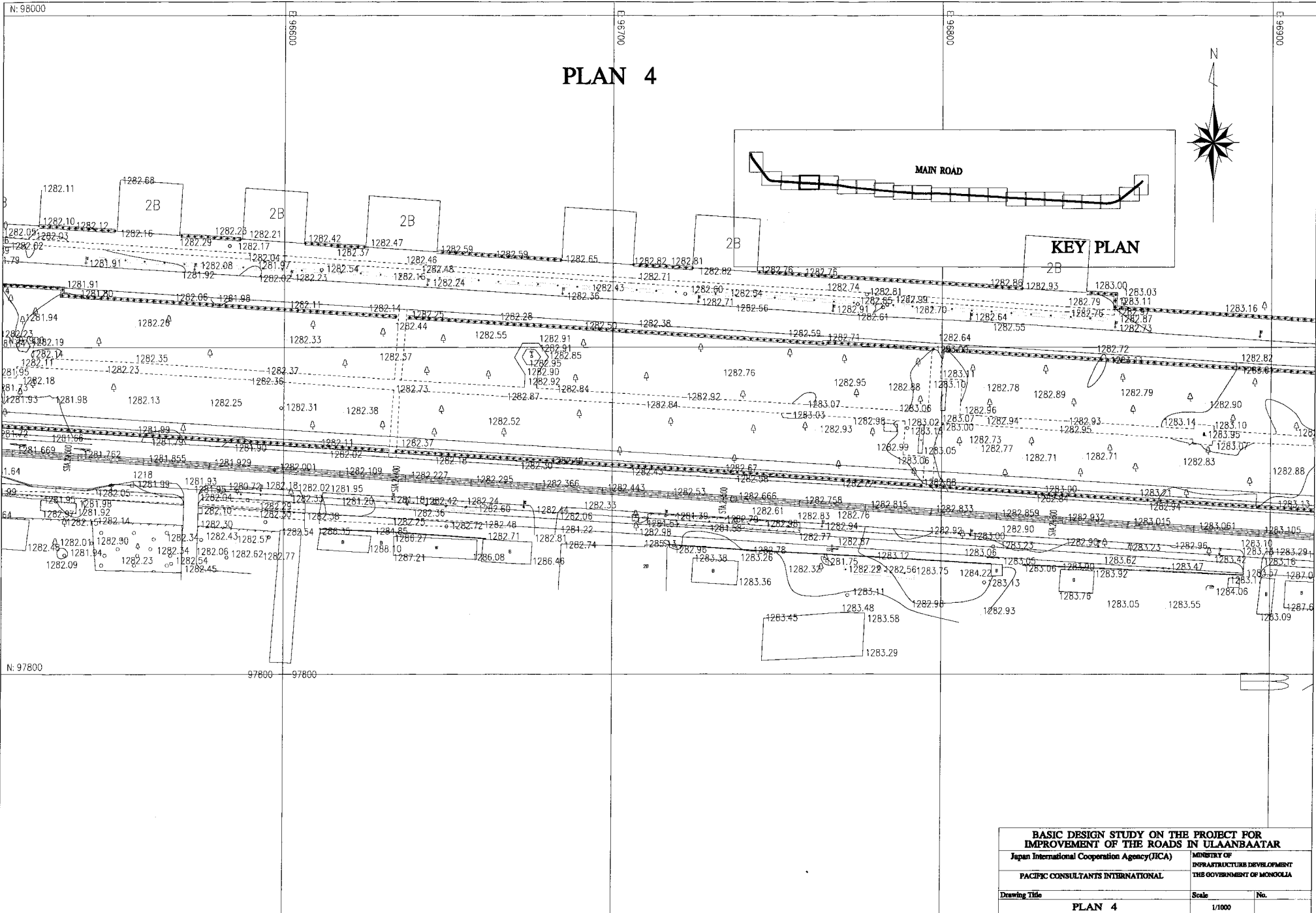


BASIC DESIGN STUDY ON THE PROJECT FOR IMPROVEMENT OF THE ROADS IN ULAANBAATAR		
Japan International Cooperation Agency(JICA)		MINISTRY OF INFRASTRUCTURE DEVELOPMENT THE GOVERNMENT OF MONGOLIA
PACIFIC CONSULTANTS INTERNATIONAL		
Drawing Title	Scale	No.
PLAN 2	1/1000	A - 84

PLAN 3



BASIC DESIGN STUDY ON THE PROJECT FOR IMPROVEMENT OF THE ROADS IN ULAANBAATAR		
Japan International Cooperation Agency (JICA)		MINISTRY OF INFRASTRUCTURE DEVELOPMENT THE GOVERNMENT OF MONGOLIA
PACIFIC CONSULTANTS INTERNATIONAL		
Drawing Title	Scale	No.
PLAN 3	1/1000	No.



BASIC DESIGN STUDY ON THE PROJECT FOR IMPROVEMENT OF THE ROADS IN ULAANBAATAR		
Japan International Cooperation Agency (JICA)		MINISTRY OF INFRASTRUCTURE DEVELOPMENT THE GOVERNMENT OF MONGOLIA
PACIFIC CONSULTANTS INTERNATIONAL		
Drawing Title	Scale	No.
PLAN 4	1/1000	

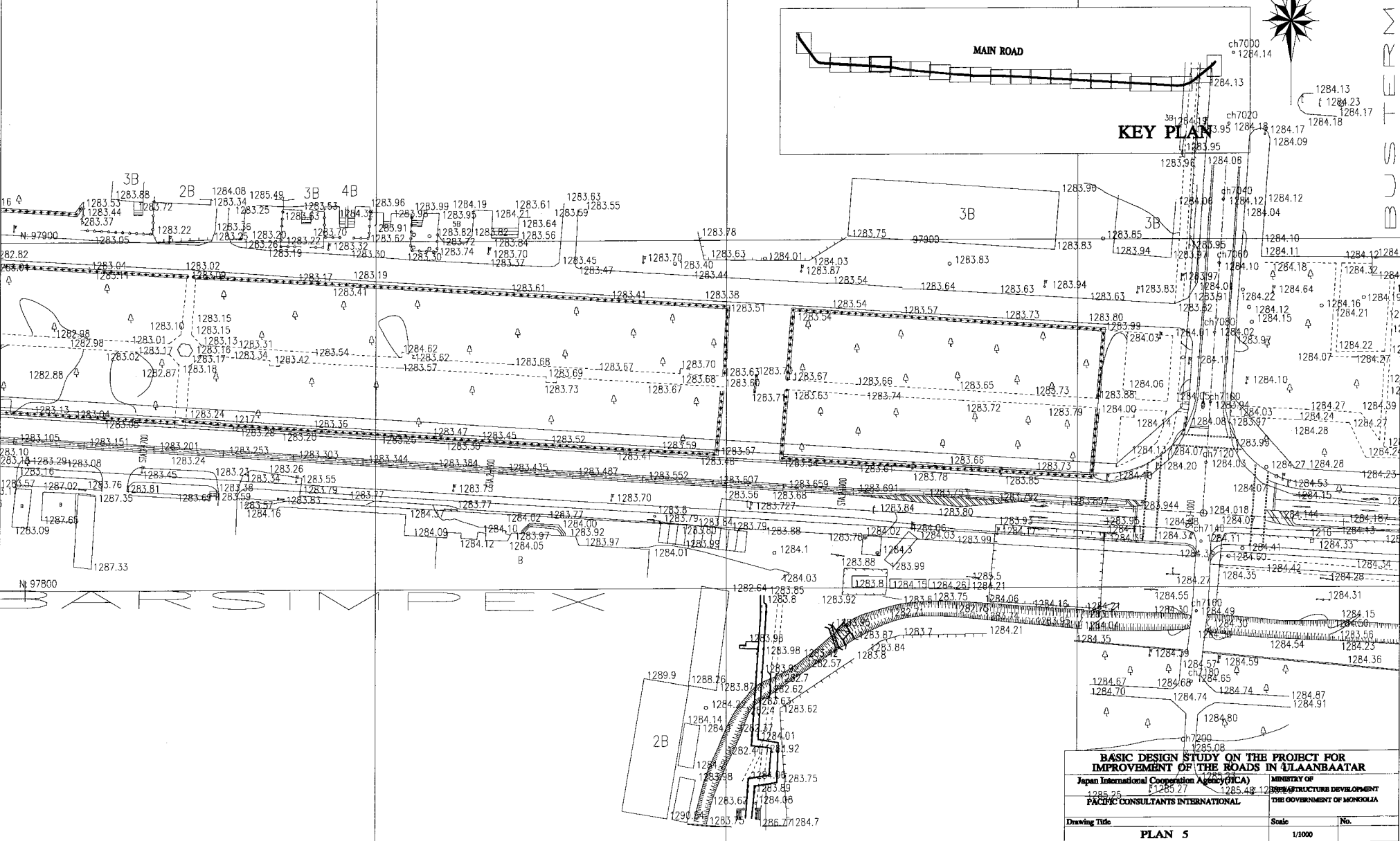
N 98000

E 97000

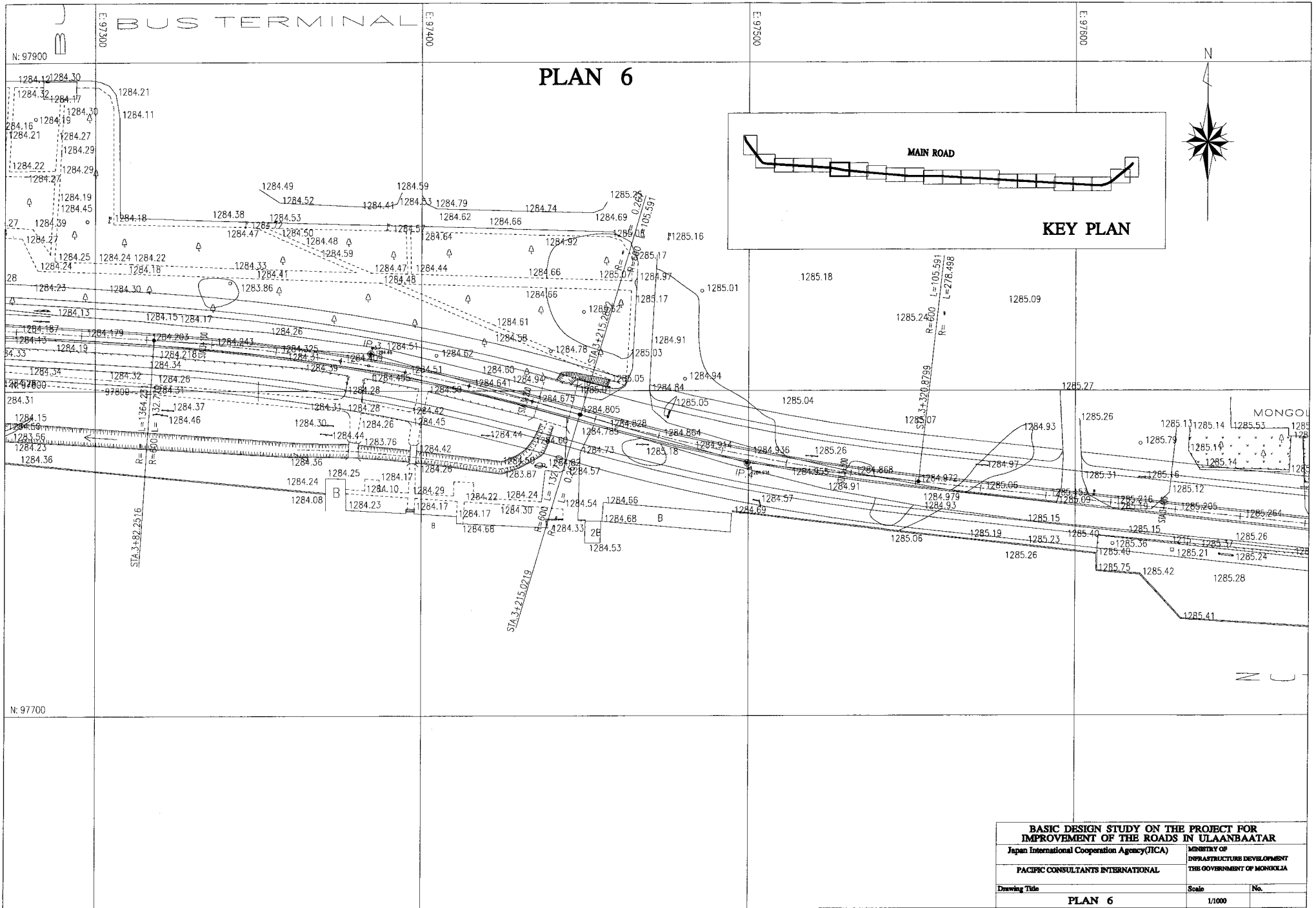
E 97000

E 97000

PLAN 5



BASIC DESIGN STUDY ON THE PROJECT FOR IMPROVEMENT OF THE ROADS IN ULAANBAATAR		
Japan International Cooperation Agency (JICA)		MINISTRY OF INFRASTRUCTURE DEVELOPMENT
PACIFIC CONSULTANTS INTERNATIONAL		THE GOVERNMENT OF MONGOLIA
Drawing Title	Scale	No.
PLAN 5	1/1000	



BASIC DESIGN STUDY ON THE PROJECT FOR IMPROVEMENT OF THE ROADS IN ULAANBAATAR		
Japan International Cooperation Agency (JICA)		MINISTRY OF INFRASTRUCTURE DEVELOPMENT
PACIFIC CONSULTANTS INTERNATIONAL		THE GOVERNMENT OF MONGOLIA
Drawing Title	Scale	No.
PLAN 6	1/1000	

N: 97900

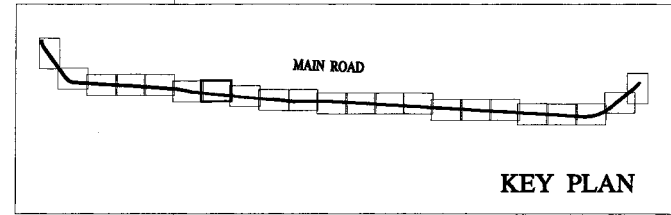
E: 97800

E: 97900

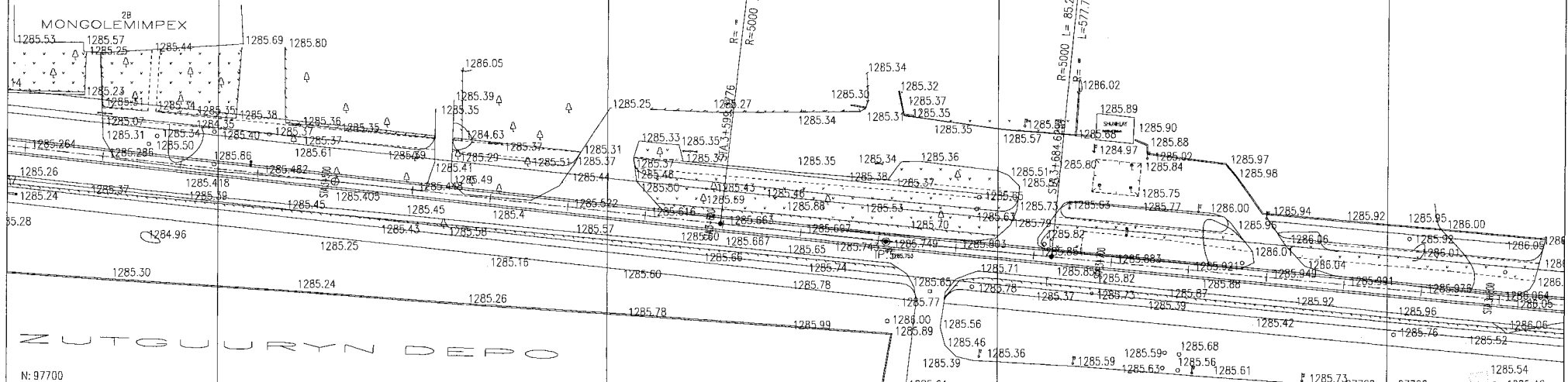
E: 97900

E: 98000

PLAN 7



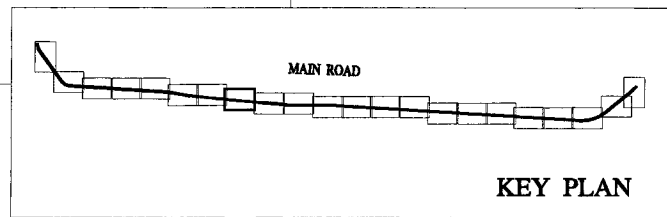
N: 97800



N: 97700

BASIC DESIGN STUDY ON THE PROJECT FOR IMPROVEMENT OF THE ROADS IN ULAANBAATAR		
Japan International Cooperation Agency(JICA)		MINISTRY OF INFRASTRUCTURE DEVELOPMENT
PACIFIC CONSULTANTS INTERNATIONAL		THE GOVERNMENT OF MONGOLIA
Drawing Title	Scale	No.
PLAN 7	1/1000	

PLAN 8



THIRD PARK OF BUS

GRAND HOTEL

ROAD

N: 97800

E: 98100

E: 98200

E: 98300

E: 98400

N: 97600

BASIC DESIGN STUDY ON THE PROJECT FOR IMPROVEMENT OF THE ROADS IN ULAANBAATAR		
Japan International Cooperation Agency (JICA)	MINISTRY OF INFRASTRUCTURE DEVELOPMENT THE GOVERNMENT OF MONGOLIA	
PACIFIC CONSULTANTS INTERNATIONAL		
Drawing Title	Scale	No.
PLAN 8	1/1000	

N: 97800

E: 98800

E: 98800

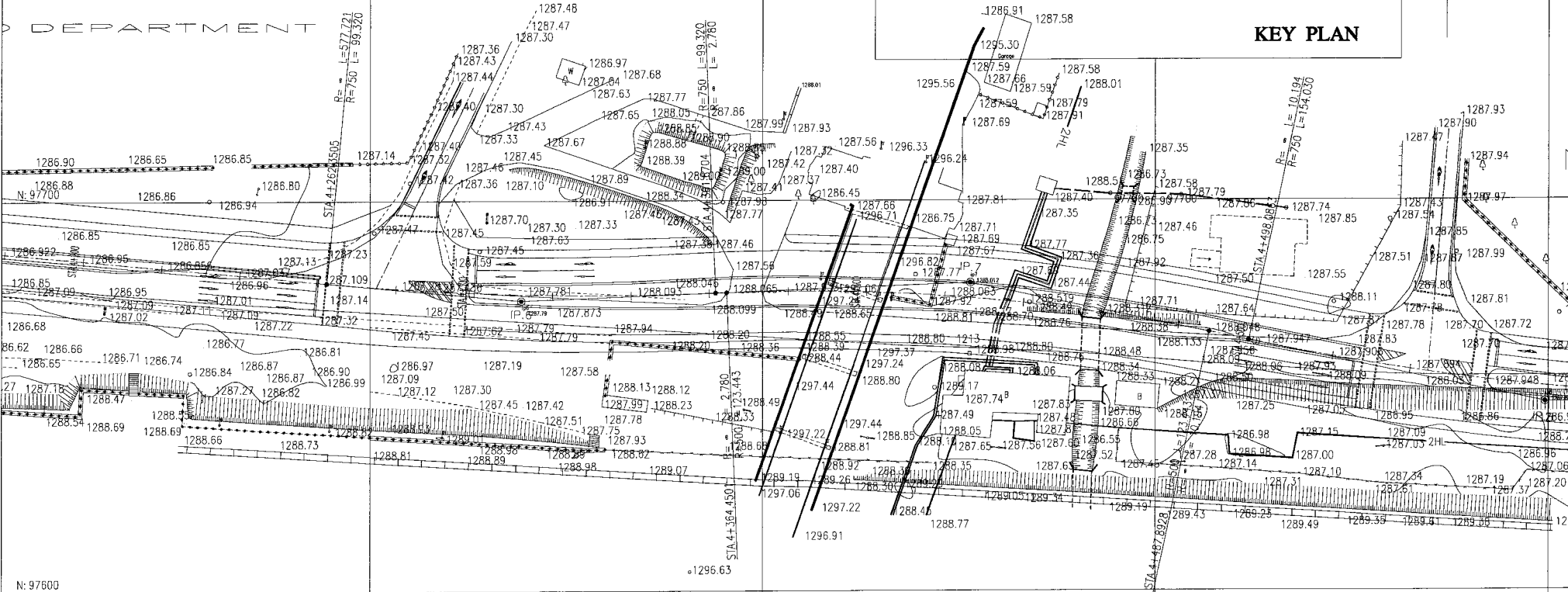
E: 98800

E: 98800

PLAN 9



DEPARTMENT



BASIC DESIGN STUDY ON THE PROJECT FOR IMPROVEMENT OF THE ROADS IN ULAANBAATAR		
Japan International Cooperation Agency (JICA)		MINISTRY OF INFRASTRUCTURE DEVELOPMENT
PACIFIC CONSULTANTS INTERNATIONAL		THE GOVERNMENT OF MONGOLIA
Drawing Title	PLAN 9	Scale
		1/1000
		No.

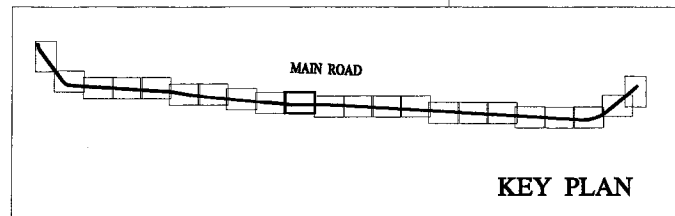
N: 97800

E: 98900

E: 99000

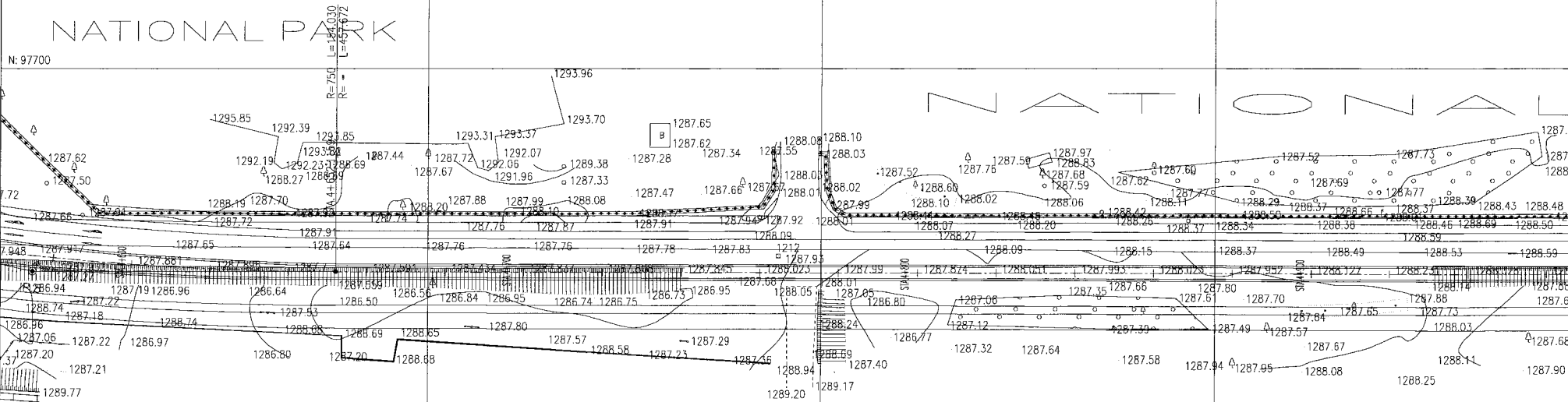
E: 99100

PLAN 10



NATIONAL PARK

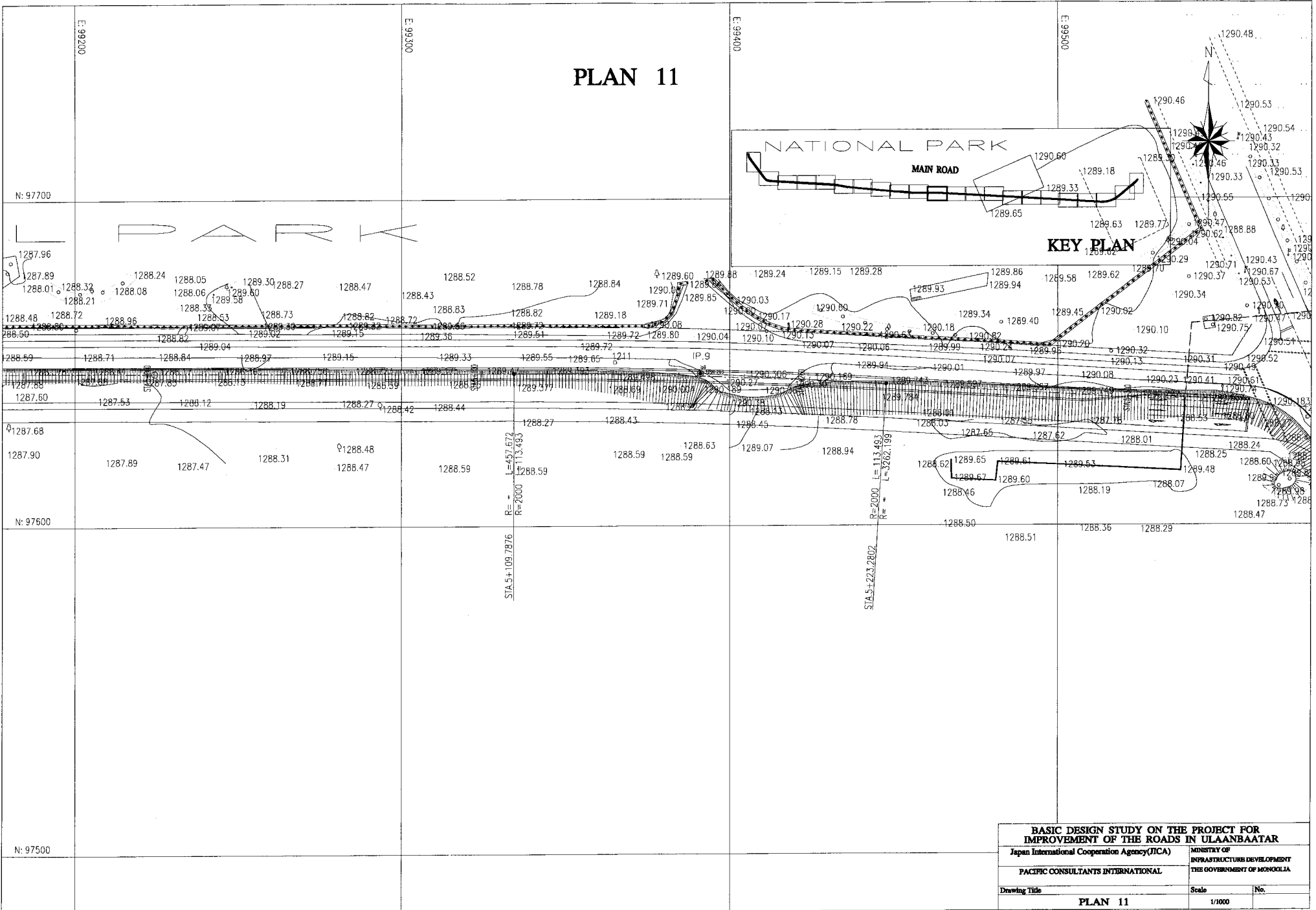
N: 97700



N: 97600

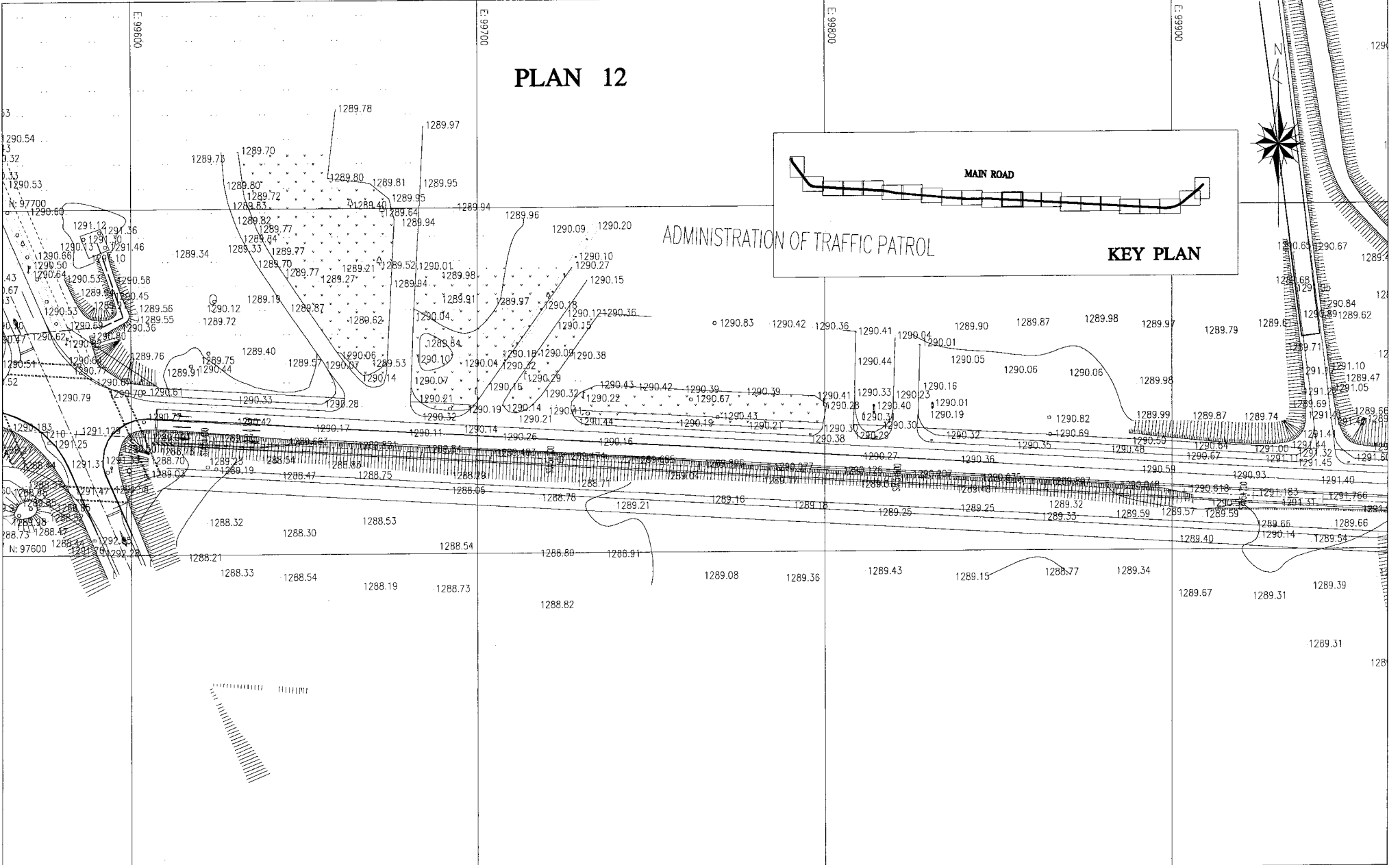
BASIC DESIGN STUDY ON THE PROJECT FOR IMPROVEMENT OF THE ROADS IN ULAANBAATAR		
Japan International Cooperation Agency (JICA)		MINISTRY OF INFRASTRUCTURE DEVELOPMENT THE GOVERNMENT OF MONGOLIA
PACIFIC CONSULTANTS INTERNATIONAL		
Drawing Title	Scale	No.
PLAN 10	1/1000	

PLAN 11



BASIC DESIGN STUDY ON THE PROJECT FOR IMPROVEMENT OF THE ROADS IN ULAANBAATAR		
Japan International Cooperation Agency (JICA)	MINISTRY OF INFRASTRUCTURE DEVELOPMENT	
PACIFIC CONSULTANTS INTERNATIONAL	THE GOVERNMENT OF MONGOLIA	
Drawing Title	Scale	No.
PLAN 11	1/1000	

PLAN 12



ADMINISTRATION OF TRAFFIC PATROL

KEY PLAN

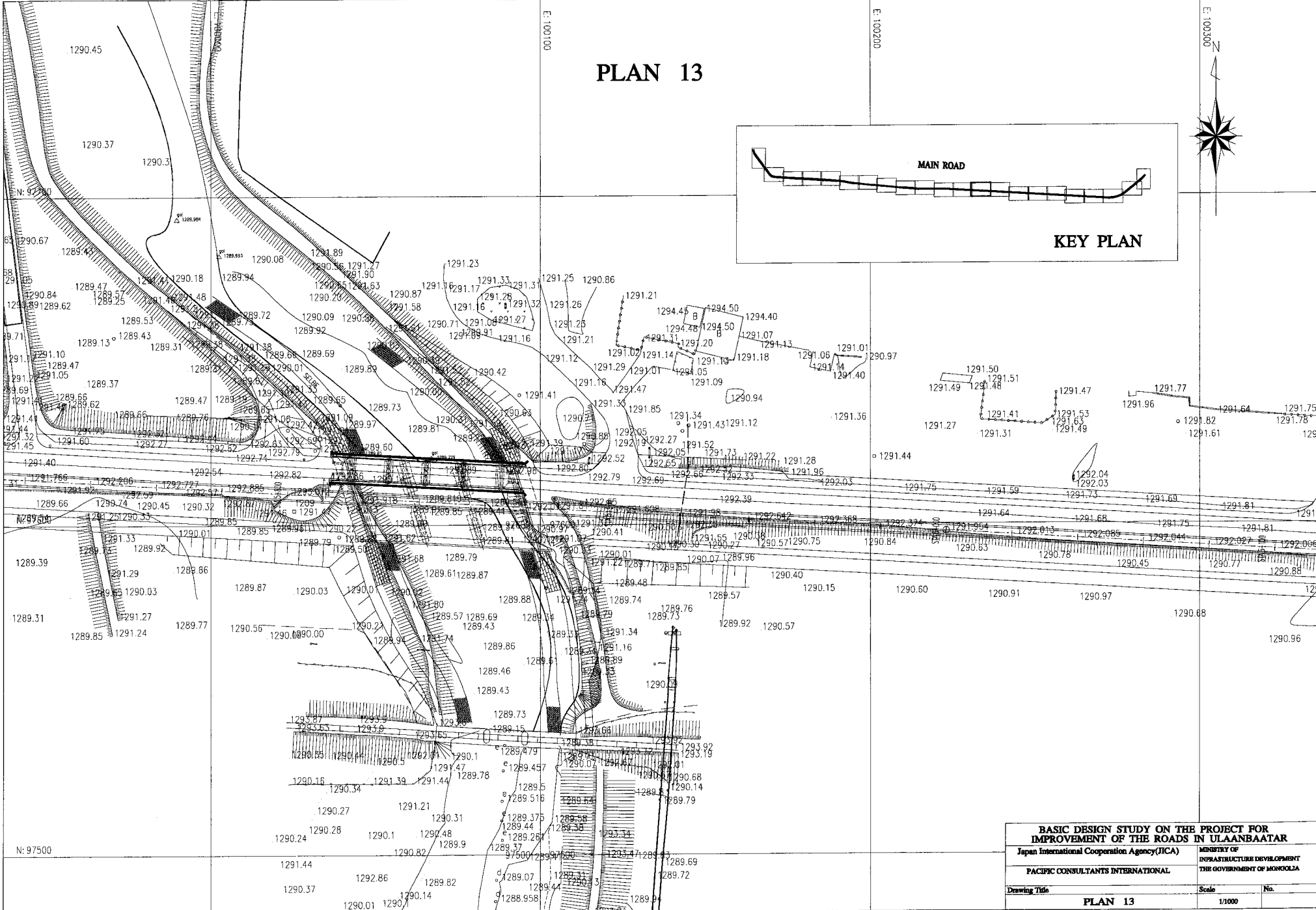
MAIN ROAD



N: 97500

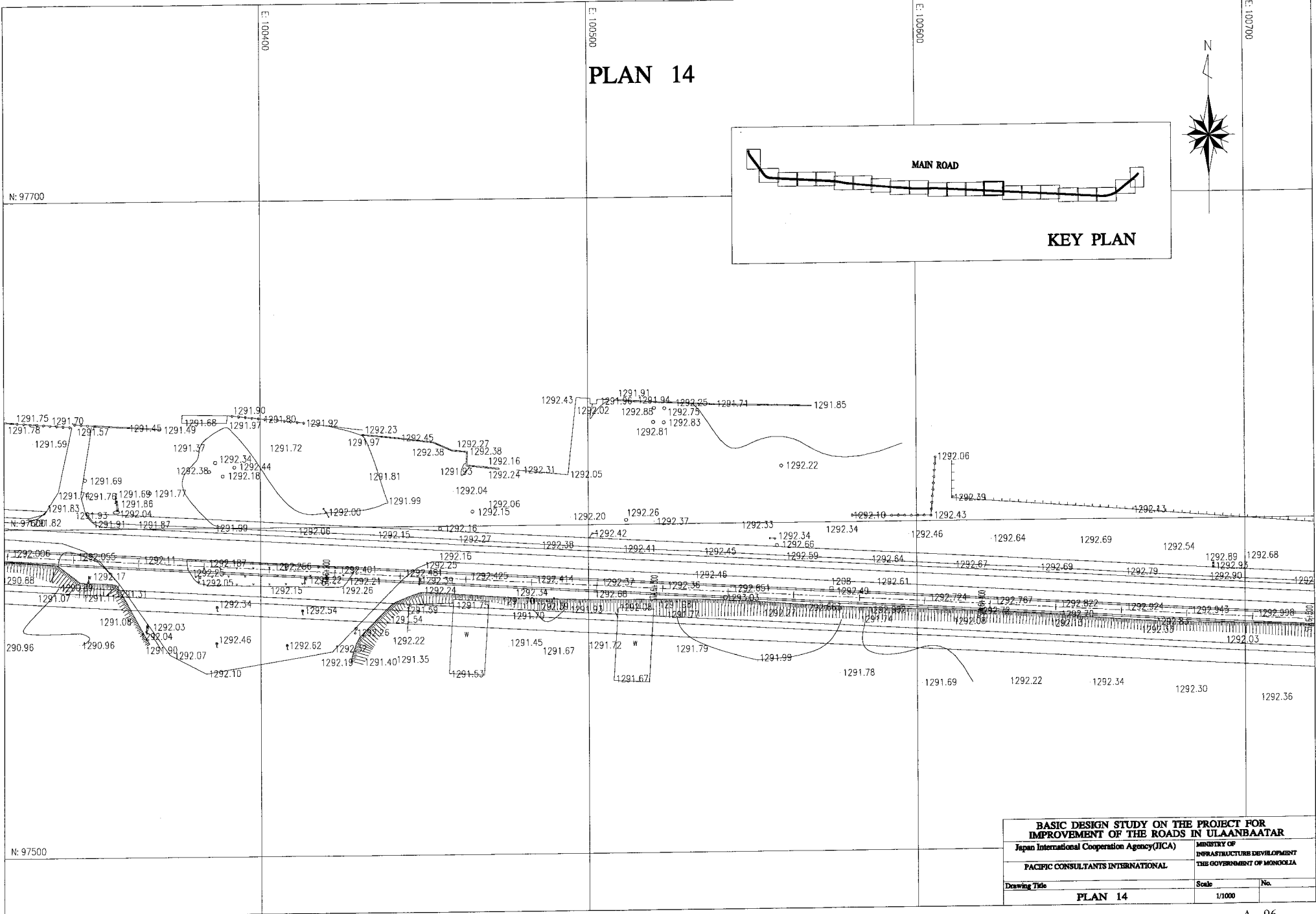
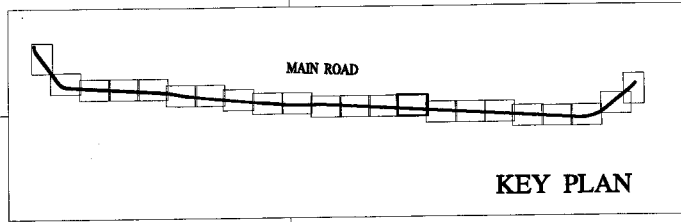
BASIC DESIGN STUDY ON THE PROJECT FOR IMPROVEMENT OF THE ROADS IN ULAANBAATAR		
Japan International Cooperation Agency (JICA)		MINISTRY OF INFRASTRUCTURE DEVELOPMENT
PACIFIC CONSULTANTS INTERNATIONAL		THE GOVERNMENT OF MONGOLIA
Drawing Title	Scale	No.
PLAN 12	1/1000	

PLAN 13

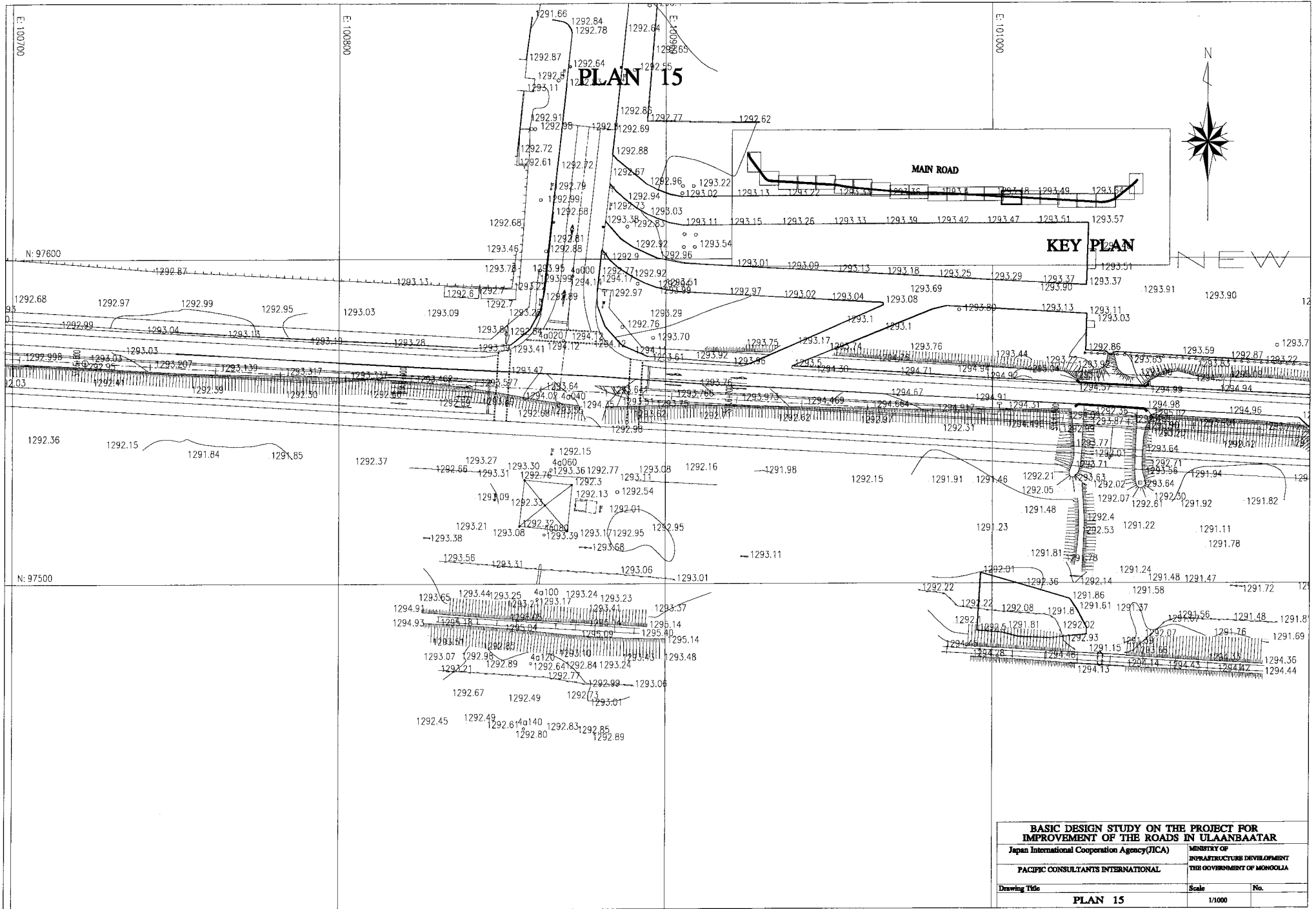


BASIC DESIGN STUDY ON THE PROJECT FOR IMPROVEMENT OF THE ROADS IN ULAANBAATAR		
Japan International Cooperation Agency (JICA)		MINISTRY OF INFRASTRUCTURE DEVELOPMENT
PACIFIC CONSULTANTS INTERNATIONAL		THE GOVERNMENT OF MONGOLIA
Drawing Title	Scale	No.
PLAN 13	1/1000	

PLAN 14

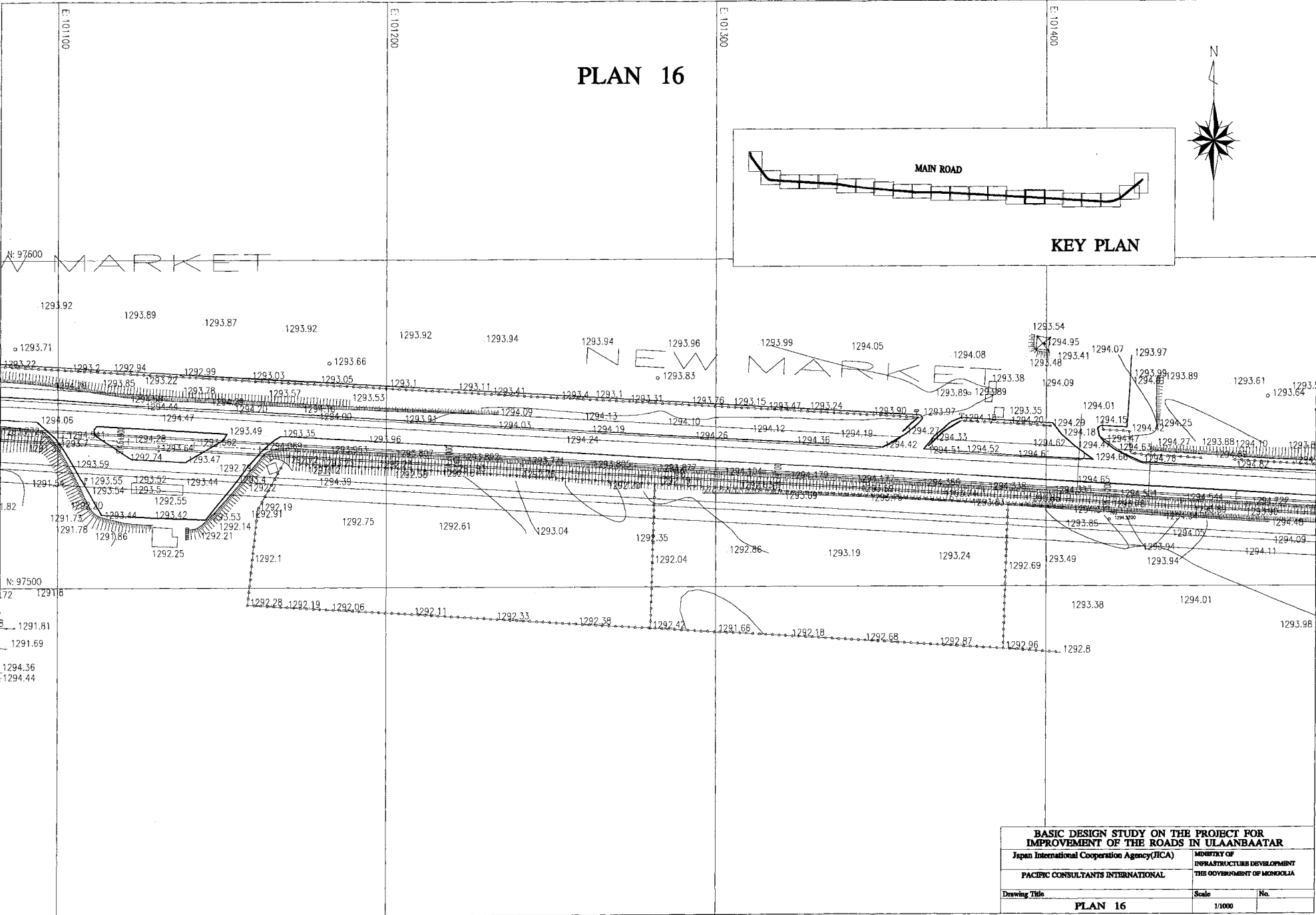
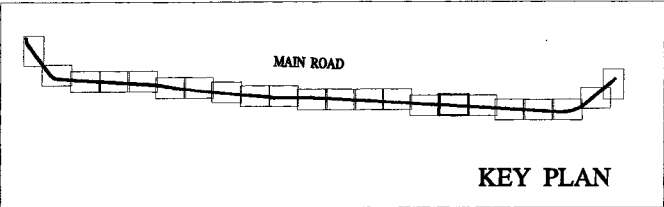


BASIC DESIGN STUDY ON THE PROJECT FOR IMPROVEMENT OF THE ROADS IN ULAANBAATAR	
Japan International Cooperation Agency (JICA)	MINISTRY OF INFRASTRUCTURE DEVELOPMENT THE GOVERNMENT OF MONGOLIA
PACIFIC CONSULTANTS INTERNATIONAL	
Drawing Title	Scale No.
PLAN 14	1/1000



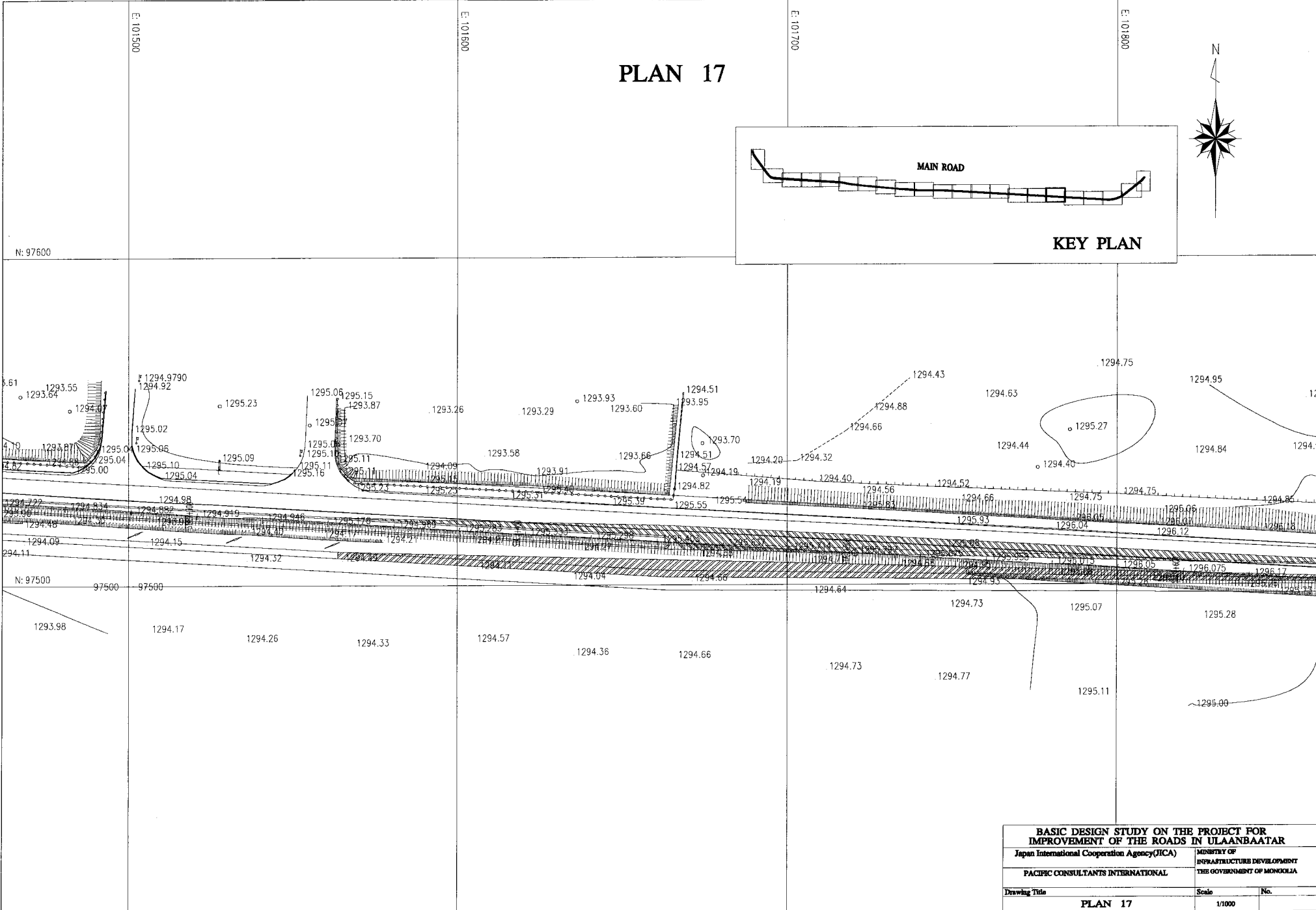
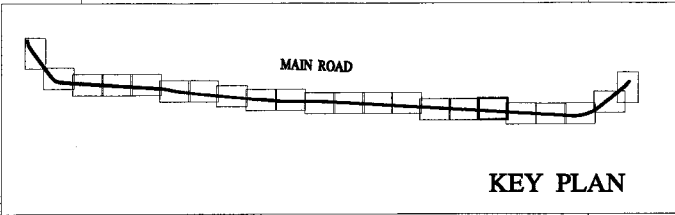
BASIC DESIGN STUDY ON THE PROJECT FOR IMPROVEMENT OF THE ROADS IN ULAANBAATAR		
Japan International Cooperation Agency (JICA)		MINISTRY OF INFRASTRUCTURE DEVELOPMENT
PACIFIC CONSULTANTS INTERNATIONAL		THE GOVERNMENT OF MONGOLIA
Drawing Title	Scale	No.
PLAN 15	1/1000	

PLAN 16



BASIC DESIGN STUDY ON THE PROJECT FOR IMPROVEMENT OF THE ROADS IN ULAANBAATAR		
Japan International Cooperation Agency (JICA)	MINISTRY OF INFRASTRUCTURE DEVELOPMENT	
PACIFIC CONSULTANTS INTERNATIONAL	THE GOVERNMENT OF MONGOLIA	
Drawing Title	Scale	No.
PLAN 16	1/1000	

PLAN 17



BASIC DESIGN STUDY ON THE PROJECT FOR IMPROVEMENT OF THE ROADS IN ULAANBAATAR		
Japan International Cooperation Agency (JICA)		MINISTRY OF INFRASTRUCTURE DEVELOPMENT
PACIFIC CONSULTANTS INTERNATIONAL		THE GOVERNMENT OF MONGOLIA
Drawing Title	Scale	No.
PLAN 17	1/1000	

N: 97600

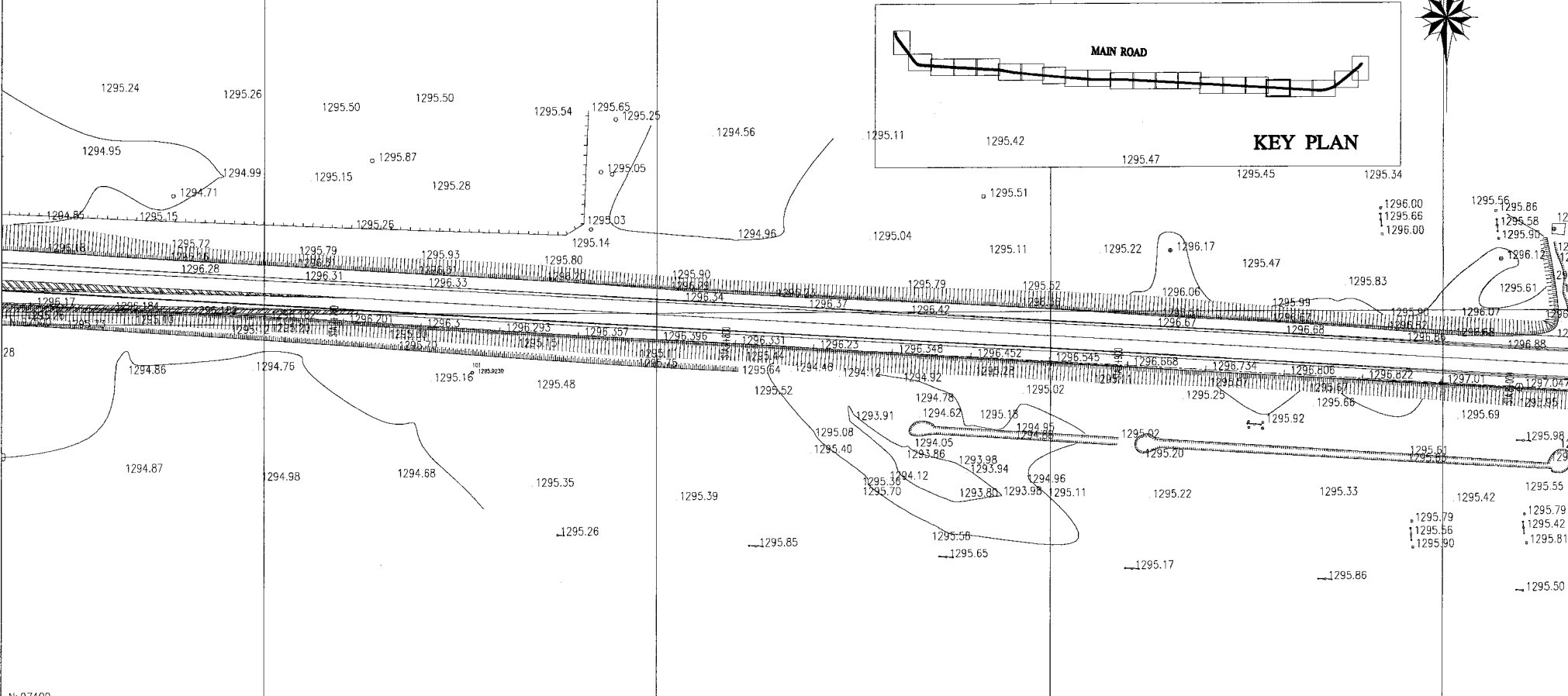
E: 101900

E: 102000

E: 102100

E: 102200

PLAN 18



N: 97400

BASIC DESIGN STUDY ON THE PROJECT FOR IMPROVEMENT OF THE ROADS IN ULAANBAATAR		
Japan International Cooperation Agency (JICA)		MINISTRY OF INFRASTRUCTURE DEVELOPMENT
PACIFIC CONSULTANTS INTERNATIONAL		THE GOVERNMENT OF MONGOLIA
Drawing Title	Scale	No.
PLAN 18	1/1000	

N: 97600

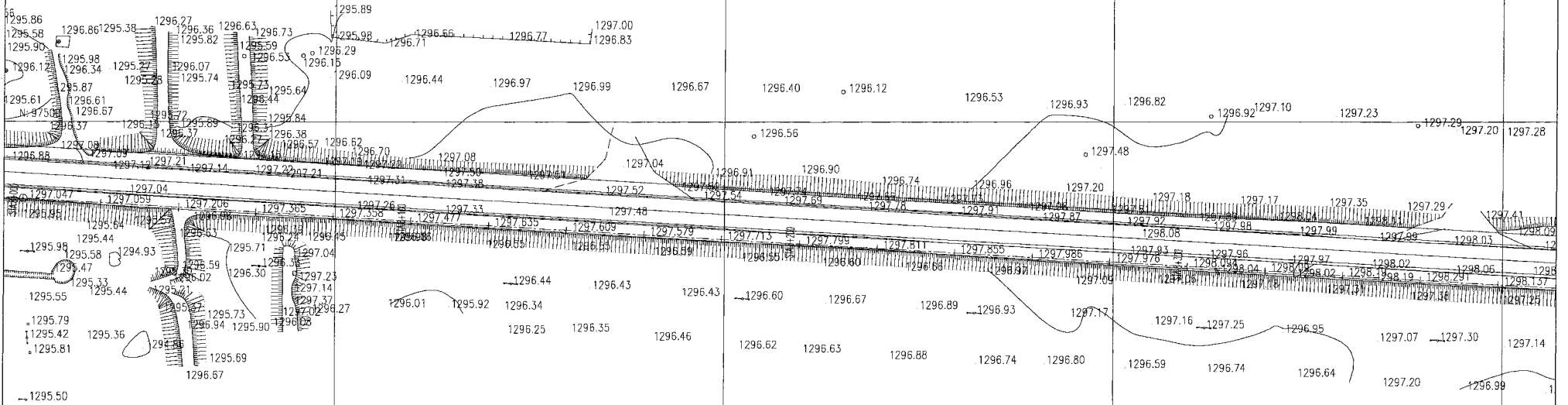
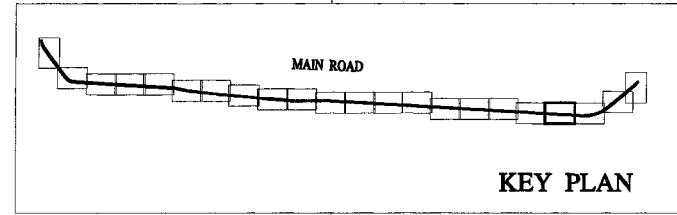
E: 102300

E: 102400

E: 102500

E: 102600

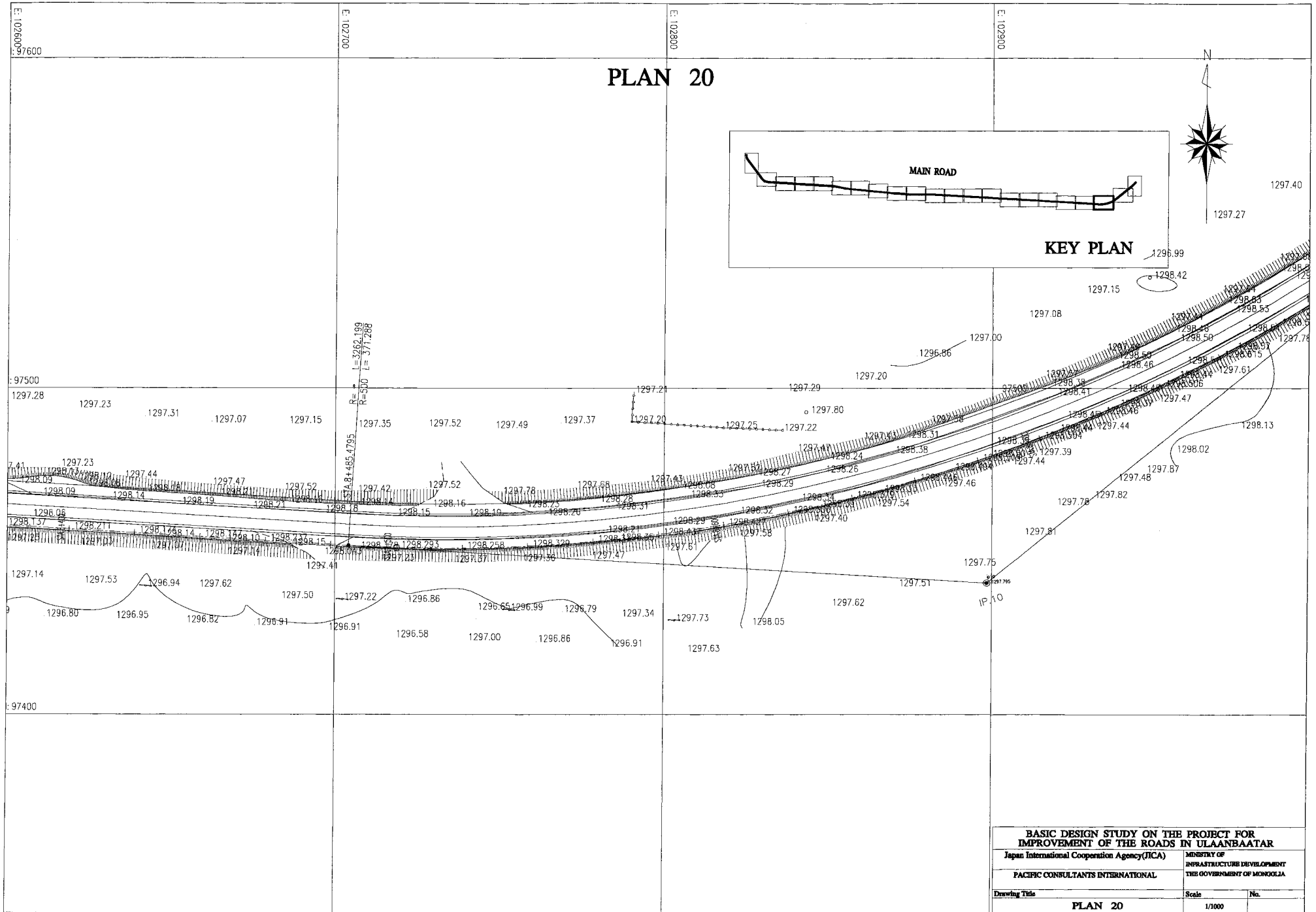
PLAN 19



N: 97400

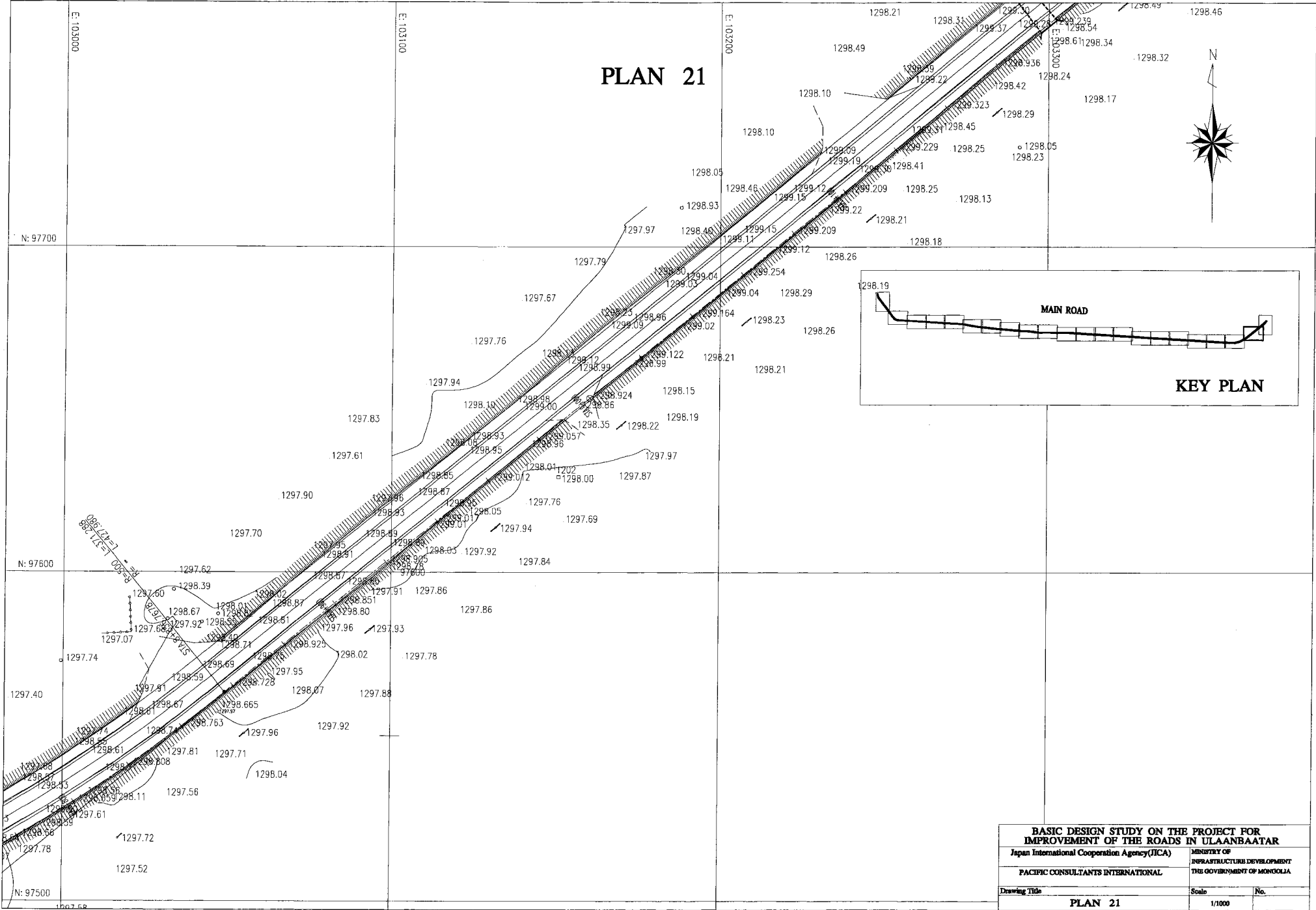
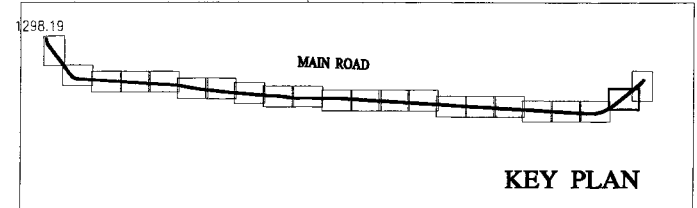
BASIC DESIGN STUDY ON THE PROJECT FOR IMPROVEMENT OF THE ROADS IN ULAANBAATAR		
Japan International Cooperation Agency (JICA)	MINISTRY OF INFRASTRUCTURE DEVELOPMENT	
PACIFIC CONSULTANTS INTERNATIONAL	THE GOVERNMENT OF MONGOLIA	
Drawing Title	Scale	No.
PLAN 19	1/1000	

PLAN 20



BASIC DESIGN STUDY ON THE PROJECT FOR IMPROVEMENT OF THE ROADS IN ULAANBAATAR		
Japan International Cooperation Agency (JICA)	MINISTRY OF INFRASTRUCTURE DEVELOPMENT THE GOVERNMENT OF MONGOLIA	
PACIFIC CONSULTANTS INTERNATIONAL		
Drawing Title	Scale	No.
PLAN 20	1/1000	

PLAN 21



BASIC DESIGN STUDY ON THE PROJECT FOR IMPROVEMENT OF THE ROADS IN ULAANBAATAR		
Japan International Cooperation Agency (JICA)		MINISTRY OF INFRASTRUCTURE DEVELOPMENT
PACIFIC CONSULTANTS INTERNATIONAL		THE GOVERNMENT OF MONGOLIA
Drawing Title	Scale	No.
PLAN 21	1/1000	