



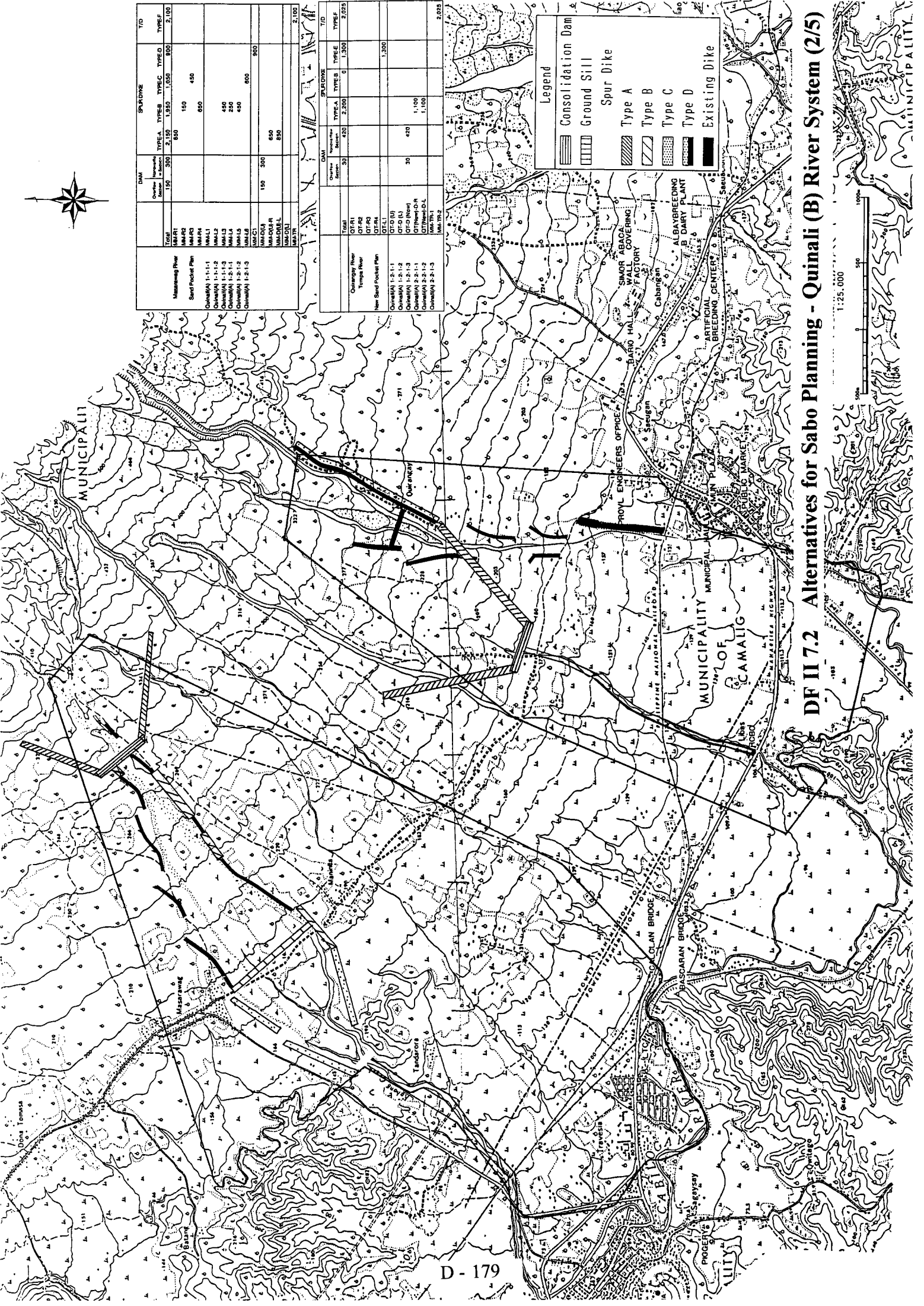


Municipality	DAM	SPILLWAY				T/D
		TYPE A	TYPE B	TYPE C	TYPE D	
Municipality of Quinali	GR1	300	2,150	1,050	800	2,100
	GR2				150	
	GR3				650	
	GR4				450	
	GR5				450	
Municipality of Camalig	GR6	150	300		300	
	GR7				650	
	GR8				850	
	GR9					
	GR10					

DAM	Capacity (M3)	Height (M)	SPILLWAY				T/D
			TYPE A	TYPE B	TYPE C	TYPE D	
Total			2,200	0	1,300	2,025	
Challenging River							
Tempo River							
New Saed Pocket Plan							
OT-1	420					1,300	
OT-2							
OT-3							
OT-4							
OT-5							
OT-6							
OT-7							
OT-8							
OT-9							
OT-10							
OT-11							
OT-12							
OT-13							
OT-14							
OT-15							
OT-16							
OT-17							
OT-18							
OT-19							
OT-20							

**Legend**

- Consolidation Dam
- Ground Still
- Spur Dike
- Type A
- Type B
- Type C
- Type D
- Existing Dike



**DF II 7.2 Alternatives for Sabo Planning - Quinali (B) River System (2/5)**



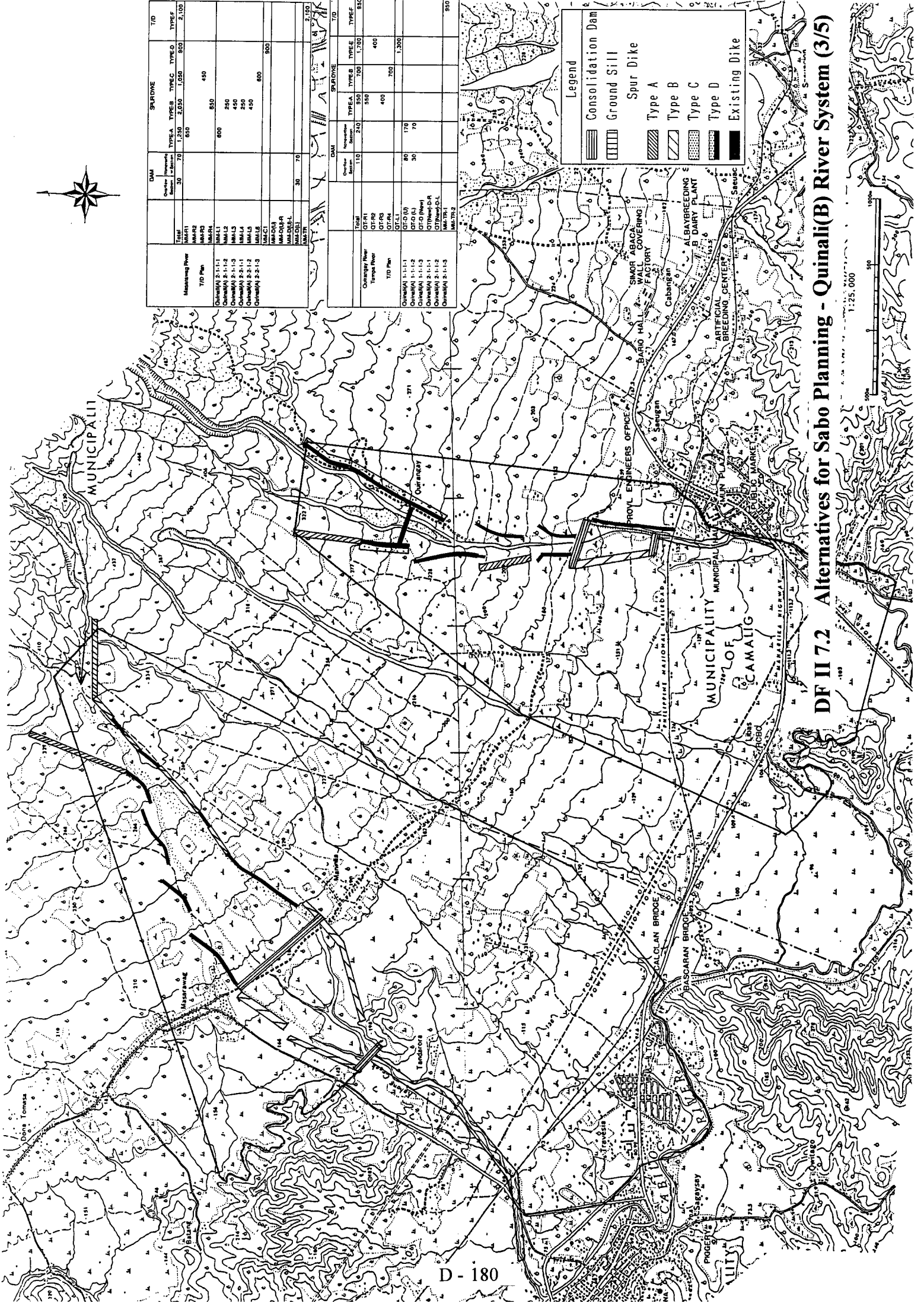


Dam Name	SPEARLINE				T/D
	TYPE A	TYPE B	TYPE C	TYPE D	
<b>Total</b>	1,540	1,050	900	2,100	
<b>Measuring River</b>					
MA-R1	850				
MA-R2			450		
MA-R3				450	
MA-R4					
MA-R5					
MA-R6					
MA-R7					
MA-R8					
MA-R9					
MA-R10					
MA-R11					
MA-R12					
MA-R13					
MA-R14					
MA-R15					
MA-R16					
MA-R17					
MA-R18					
MA-R19					
MA-R20					
MA-R21					
MA-R22					
MA-R23					
MA-R24					
MA-R25					
MA-R26					
MA-R27					
MA-R28					
MA-R29					
MA-R30					
MA-R31					
MA-R32					
MA-R33					
MA-R34					
MA-R35					
MA-R36					
MA-R37					
MA-R38					
MA-R39					
MA-R40					
MA-R41					
MA-R42					
MA-R43					
MA-R44					
MA-R45					
MA-R46					
MA-R47					
MA-R48					
MA-R49					
MA-R50					
MA-R51					
MA-R52					
MA-R53					
MA-R54					
MA-R55					
MA-R56					
MA-R57					
MA-R58					
MA-R59					
MA-R60					
MA-R61					
MA-R62					
MA-R63					
MA-R64					
MA-R65					
MA-R66					
MA-R67					
MA-R68					
MA-R69					
MA-R70					
MA-R71					
MA-R72					
MA-R73					
MA-R74					
MA-R75					
MA-R76					
MA-R77					
MA-R78					
MA-R79					
MA-R80					
MA-R81					
MA-R82					
MA-R83					
MA-R84					
MA-R85					
MA-R86					
MA-R87					
MA-R88					
MA-R89					
MA-R90					
MA-R91					
MA-R92					
MA-R93					
MA-R94					
MA-R95					
MA-R96					
MA-R97					
MA-R98					
MA-R99					
MA-R100					

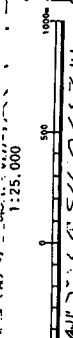
Dam Name	SPEARLINE				T/D
	TYPE A	TYPE B	TYPE C	TYPE D	
<b>Total</b>	1,110	700	540	400	
<b>Outangay River</b>					
OT-R1	240				
OT-R2			400		
OT-R3				700	
OT-R4					
OT-R5					
OT-R6					
OT-R7					
OT-R8					
OT-R9					
OT-R10					
OT-R11					
OT-R12					
OT-R13					
OT-R14					
OT-R15					
OT-R16					
OT-R17					
OT-R18					
OT-R19					
OT-R20					
OT-R21					
OT-R22					
OT-R23					
OT-R24					
OT-R25					
OT-R26					
OT-R27					
OT-R28					
OT-R29					
OT-R30					
OT-R31					
OT-R32					
OT-R33					
OT-R34					
OT-R35					
OT-R36					
OT-R37					
OT-R38					
OT-R39					
OT-R40					
OT-R41					
OT-R42					
OT-R43					
OT-R44					
OT-R45					
OT-R46					
OT-R47					
OT-R48					
OT-R49					
OT-R50					
OT-R51					
OT-R52					
OT-R53					
OT-R54					
OT-R55					
OT-R56					
OT-R57					
OT-R58					
OT-R59					
OT-R60					
OT-R61					
OT-R62					
OT-R63					
OT-R64					
OT-R65					
OT-R66					
OT-R67					
OT-R68					
OT-R69					
OT-R70					
OT-R71					
OT-R72					
OT-R73					
OT-R74					
OT-R75					
OT-R76					
OT-R77					
OT-R78					
OT-R79					
OT-R80					
OT-R81					
OT-R82					
OT-R83					
OT-R84					
OT-R85					
OT-R86					
OT-R87					
OT-R88					
OT-R89					
OT-R90					
OT-R91					
OT-R92					
OT-R93					
OT-R94					
OT-R95					
OT-R96					
OT-R97					
OT-R98					
OT-R99					
OT-R100					

**Legend**

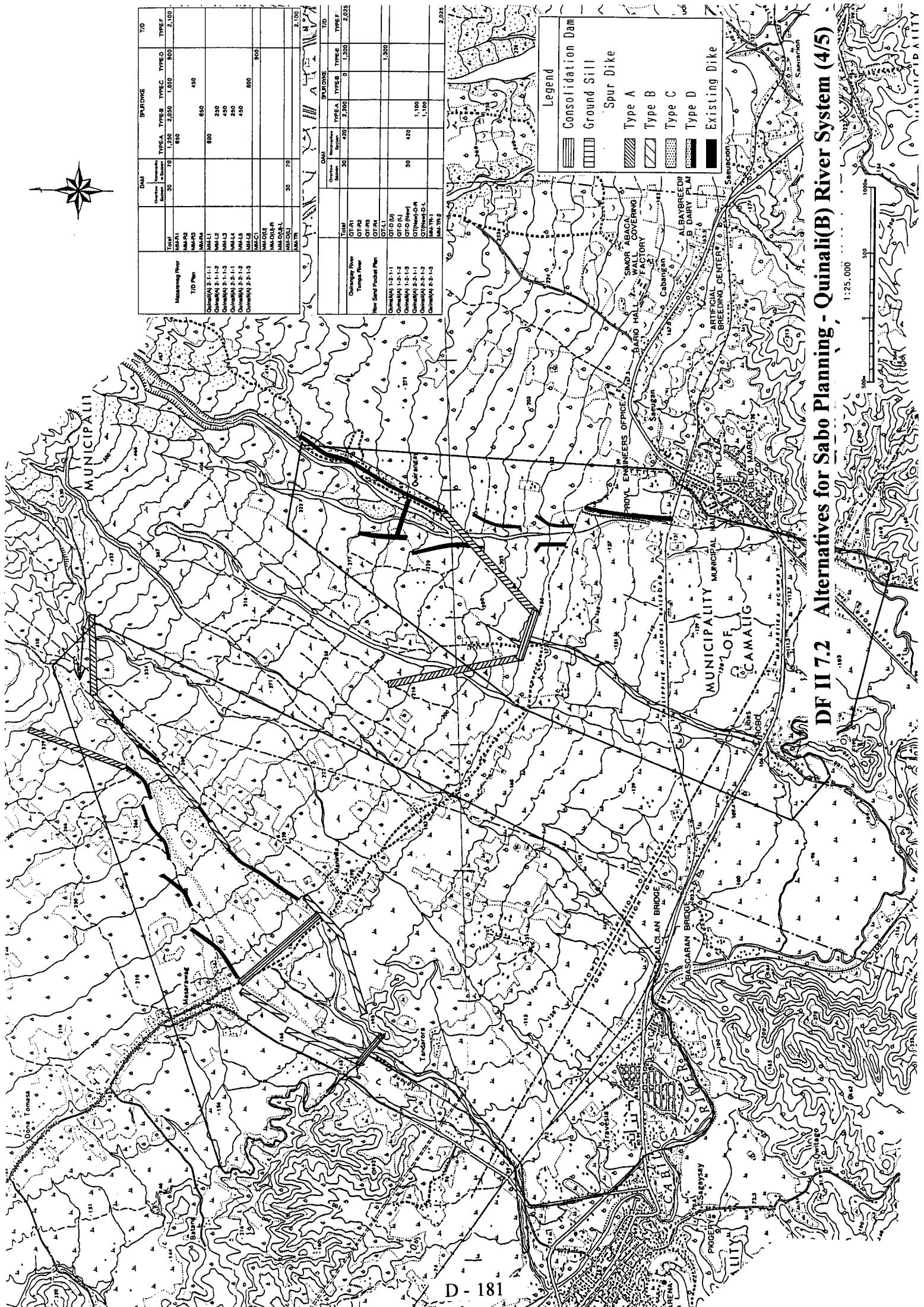
- Consolidation Dam
- Ground Sill
- Spur Dike
- Type A
- Type B
- Type C
- Type D
- Existing Dike



**DF II 7.2 Alternatives for Sabo Planning - Quinali(B) River System (3/5)**



1:25,000



Dam	Type	Height (m)	Spur Dike		T/D
			Type A	Type B	
Changay River	OTR1	30	70	1,050	2,100
Tampas River	OTR2	30	70	1,050	2,100
New Sand Pocket Pen	OTR3	30	70	1,050	2,100
Chavaria 1.2-1.1	OTD (A)	30	70	1,050	2,100
Chavaria 1.2-1.2	OTD (B)	30	70	1,050	2,100
Chavaria 1.2-1.3	OTD (C)	30	70	1,050	2,100
Chavaria 2.2-1.1	OTD (D)	30	70	1,050	2,100
Chavaria 2.2-1.2	OTD (E)	30	70	1,050	2,100
Chavaria 2.2-1.3	OTD (F)	30	70	1,050	2,100

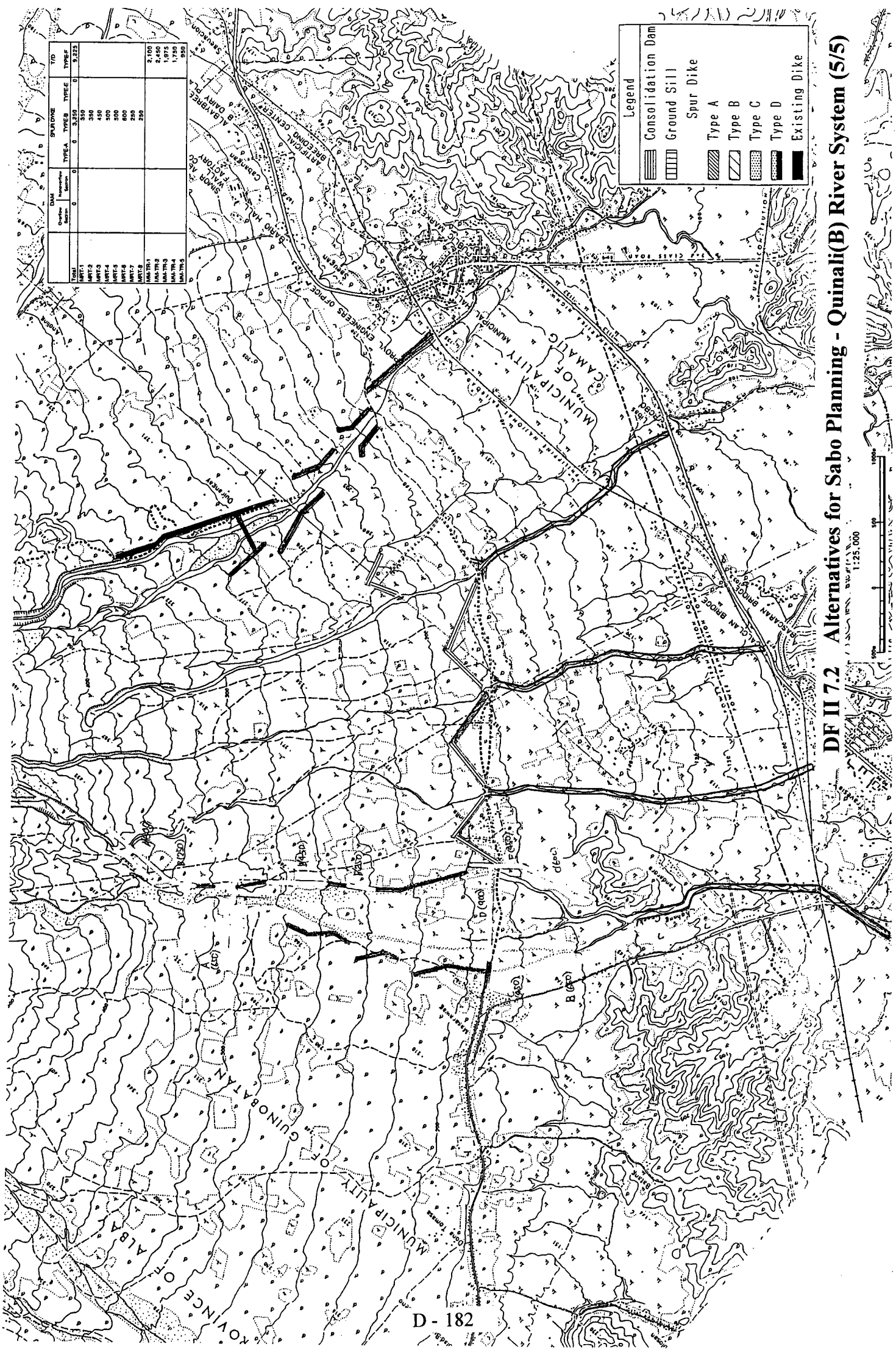
Dam	Type	Height (m)	Spur Dike				T/D
			Type A	Type B	Type C	Type D	
Changay River	OTR1	30	420	2,200	0	1,300	2,025
Tampas River	OTR2	30	420	2,200	0	1,300	2,025
New Sand Pocket Pen	OTR3	30	420	2,200	0	1,300	2,025
Chavaria 1.2-1.1	OTD (A)	30	420	2,200	0	1,300	2,025
Chavaria 1.2-1.2	OTD (B)	30	420	2,200	0	1,300	2,025
Chavaria 1.2-1.3	OTD (C)	30	420	2,200	0	1,300	2,025
Chavaria 2.2-1.1	OTD (D)	30	420	2,200	0	1,300	2,025
Chavaria 2.2-1.2	OTD (E)	30	420	2,200	0	1,300	2,025
Chavaria 2.2-1.3	OTD (F)	30	420	2,200	0	1,300	2,025

**Legend**

- Consolidation Dam
- Ground Sill
- Spur Dike
- Type A
- Type B
- Type C
- Type D
- Existing Dike

**DF II 7.2 Alternatives for Sabo Planning - Quinali(B) River System (4/5)**

Scale: 1:25,000  
 0 500 1000



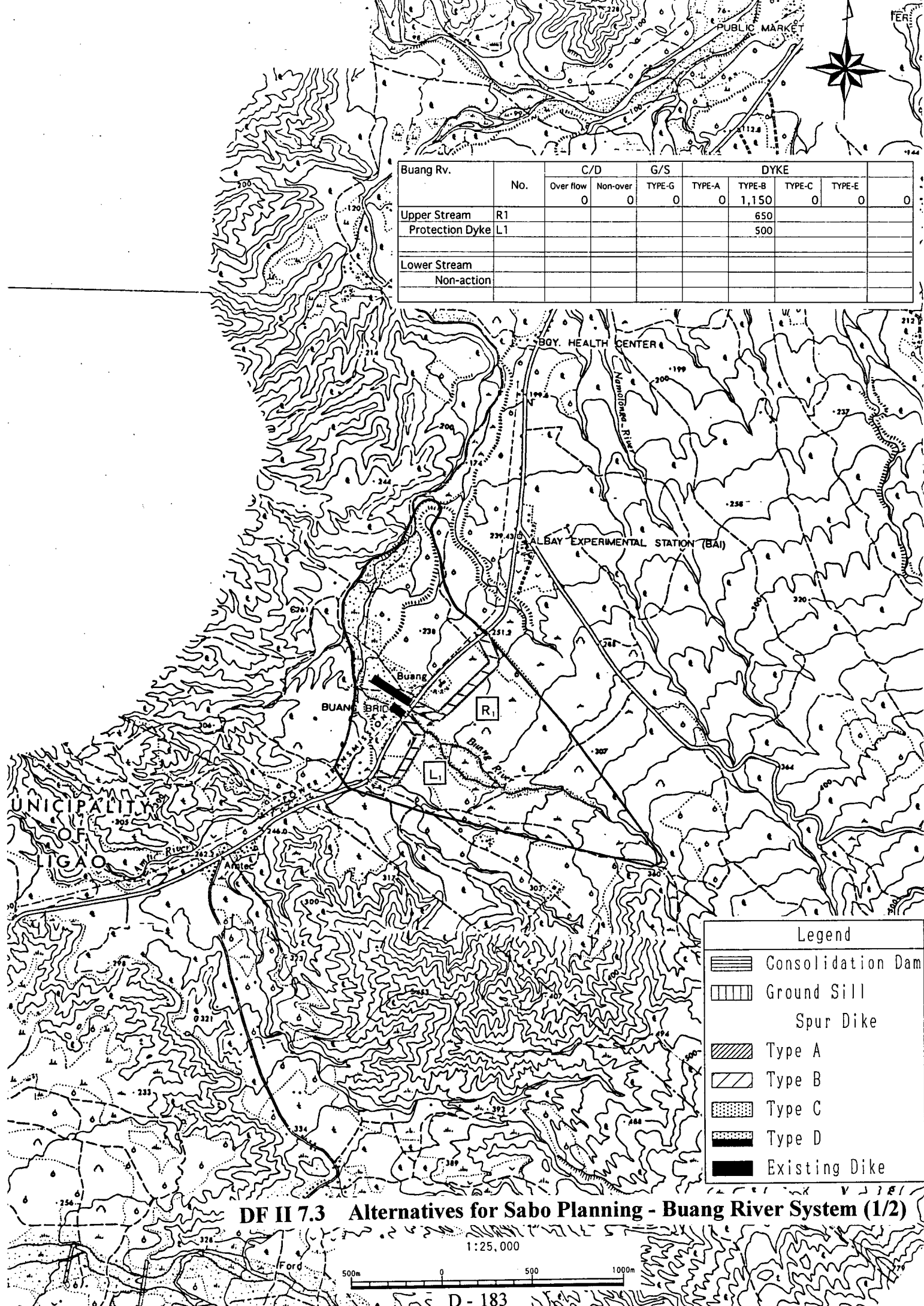
DAM	SPUR DIKE		ELEVATION	TYPE
	TYPE A	TYPE B		
DA1	0	0	3,250	0
DA2	0	0	3,250	0
DA3	0	0	3,250	0
DA4	0	0	3,250	0
DA5	0	0	3,250	0
DA6	0	0	3,250	0
DA7	0	0	3,250	0
DA8	0	0	3,250	0
DA9	0	0	3,250	0
DA10	0	0	3,250	0
DA11	0	0	3,250	0
DA12	0	0	3,250	0
DA13	0	0	3,250	0
DA14	0	0	3,250	0
DA15	0	0	3,250	0
DA16	0	0	3,250	0
DA17	0	0	3,250	0
DA18	0	0	3,250	0
DA19	0	0	3,250	0
DA20	0	0	3,250	0
DA21	0	0	3,250	0
DA22	0	0	3,250	0
DA23	0	0	3,250	0
DA24	0	0	3,250	0
DA25	0	0	3,250	0
DA26	0	0	3,250	0
DA27	0	0	3,250	0
DA28	0	0	3,250	0
DA29	0	0	3,250	0
DA30	0	0	3,250	0
DA31	0	0	3,250	0
DA32	0	0	3,250	0
DA33	0	0	3,250	0
DA34	0	0	3,250	0
DA35	0	0	3,250	0
DA36	0	0	3,250	0
DA37	0	0	3,250	0
DA38	0	0	3,250	0
DA39	0	0	3,250	0
DA40	0	0	3,250	0
DA41	0	0	3,250	0
DA42	0	0	3,250	0
DA43	0	0	3,250	0
DA44	0	0	3,250	0
DA45	0	0	3,250	0
DA46	0	0	3,250	0
DA47	0	0	3,250	0
DA48	0	0	3,250	0
DA49	0	0	3,250	0
DA50	0	0	3,250	0
DA51	0	0	3,250	0
DA52	0	0	3,250	0
DA53	0	0	3,250	0
DA54	0	0	3,250	0
DA55	0	0	3,250	0
DA56	0	0	3,250	0
DA57	0	0	3,250	0
DA58	0	0	3,250	0
DA59	0	0	3,250	0
DA60	0	0	3,250	0
DA61	0	0	3,250	0
DA62	0	0	3,250	0
DA63	0	0	3,250	0
DA64	0	0	3,250	0
DA65	0	0	3,250	0
DA66	0	0	3,250	0
DA67	0	0	3,250	0
DA68	0	0	3,250	0
DA69	0	0	3,250	0
DA70	0	0	3,250	0
DA71	0	0	3,250	0
DA72	0	0	3,250	0
DA73	0	0	3,250	0
DA74	0	0	3,250	0
DA75	0	0	3,250	0
DA76	0	0	3,250	0
DA77	0	0	3,250	0
DA78	0	0	3,250	0
DA79	0	0	3,250	0
DA80	0	0	3,250	0
DA81	0	0	3,250	0
DA82	0	0	3,250	0
DA83	0	0	3,250	0
DA84	0	0	3,250	0
DA85	0	0	3,250	0
DA86	0	0	3,250	0
DA87	0	0	3,250	0
DA88	0	0	3,250	0
DA89	0	0	3,250	0
DA90	0	0	3,250	0
DA91	0	0	3,250	0
DA92	0	0	3,250	0
DA93	0	0	3,250	0
DA94	0	0	3,250	0
DA95	0	0	3,250	0
DA96	0	0	3,250	0
DA97	0	0	3,250	0
DA98	0	0	3,250	0
DA99	0	0	3,250	0
DA100	0	0	3,250	0

Legend	
[Symbol]	Consolidation Dam
[Symbol]	Ground Sill
[Symbol]	Spur Dike
[Symbol]	Type A
[Symbol]	Type B
[Symbol]	Type C
[Symbol]	Type D
[Symbol]	Existing Dike

DF II 7.2 Alternatives for Sabo Planning - Quinali(B) River System (5/5)



Buang Rv.	No.	C/D		G/S		DYKE				
		Over flow	Non-over	TYPE-G	TYPE-A	TYPE-B	TYPE-C	TYPE-E		
Upper Stream	R1	0	0	0	0	1,150	0	0	0	0
Protection Dyke	L1					500				
Lower Stream										
Non-action										



MUNICIPALITY OF TIGAO

BOY. HEALTH CENTER

ALSAY EXPERIMENTAL STATION (BAI)

Buang BRIDGE

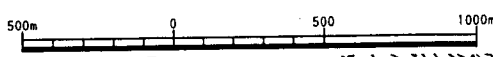
R1

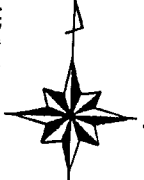
L1

Legend	
	Consolidation Dam
	Ground Sill
	Spur Dike
	Type A
	Type B
	Type C
	Type D
	Existing Dike

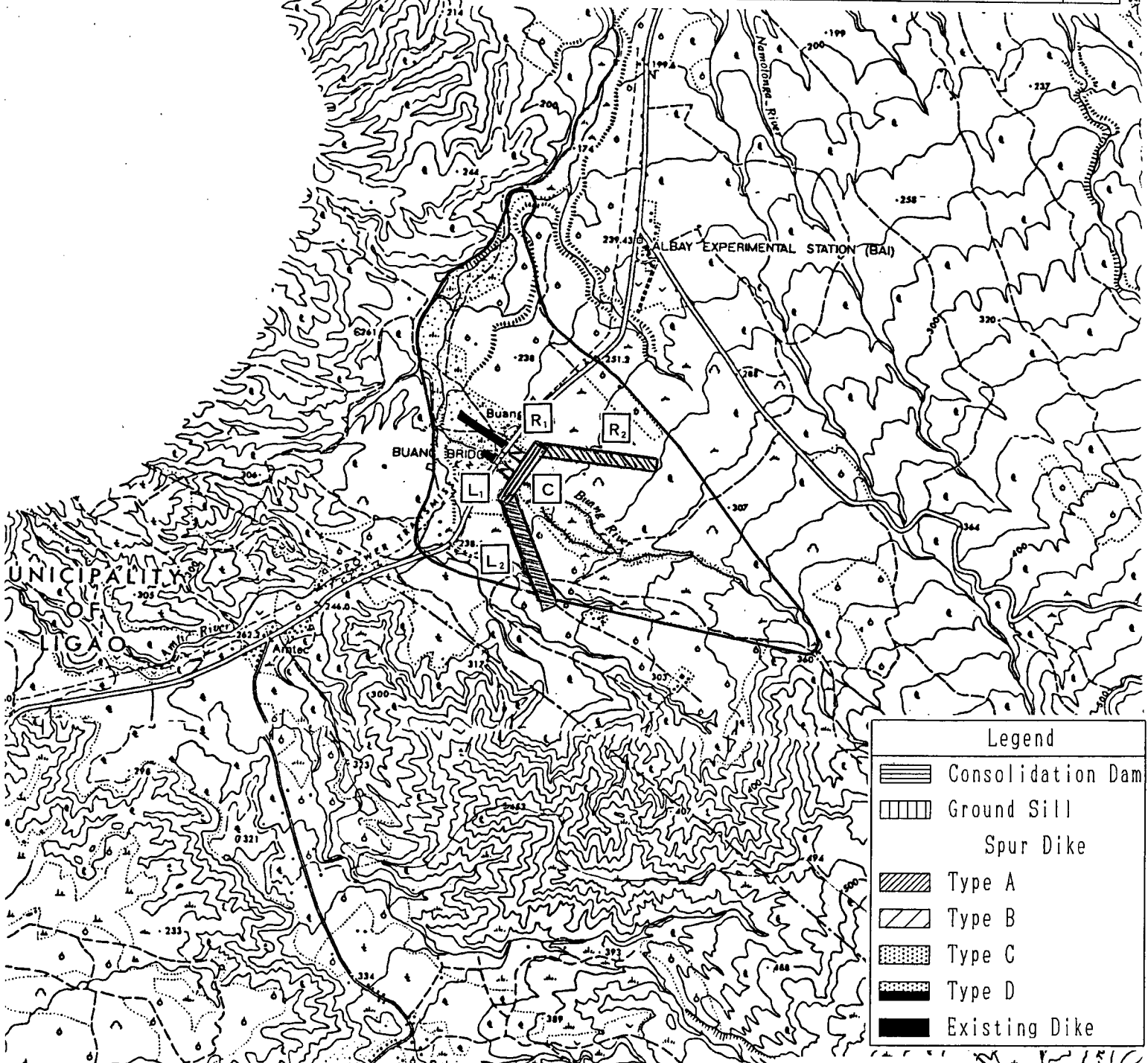
**DF II 7.3 Alternatives for Sabo Planning - Buang River System (1/2)**

1:25,000



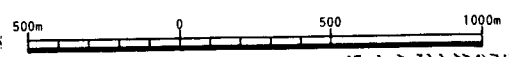


Buang Rv.	No.	C/D		G/S	DYKE				
		Over flow	Non-over	TYPE-G	TYPE-A	TYPE-B	TYPE-C	TYPE-E	
Upper Stream	C	50	200	0	1,100	100	0	0	0
Sand Pocket	R2				550				
	L2				550				
	R1					50			
	L1					50			
Lower Stream									
Non-action									



**DF II 7.3 Alternatives for Sabo Planning - Buang River System (2/2)**

1:25,000



D - 184