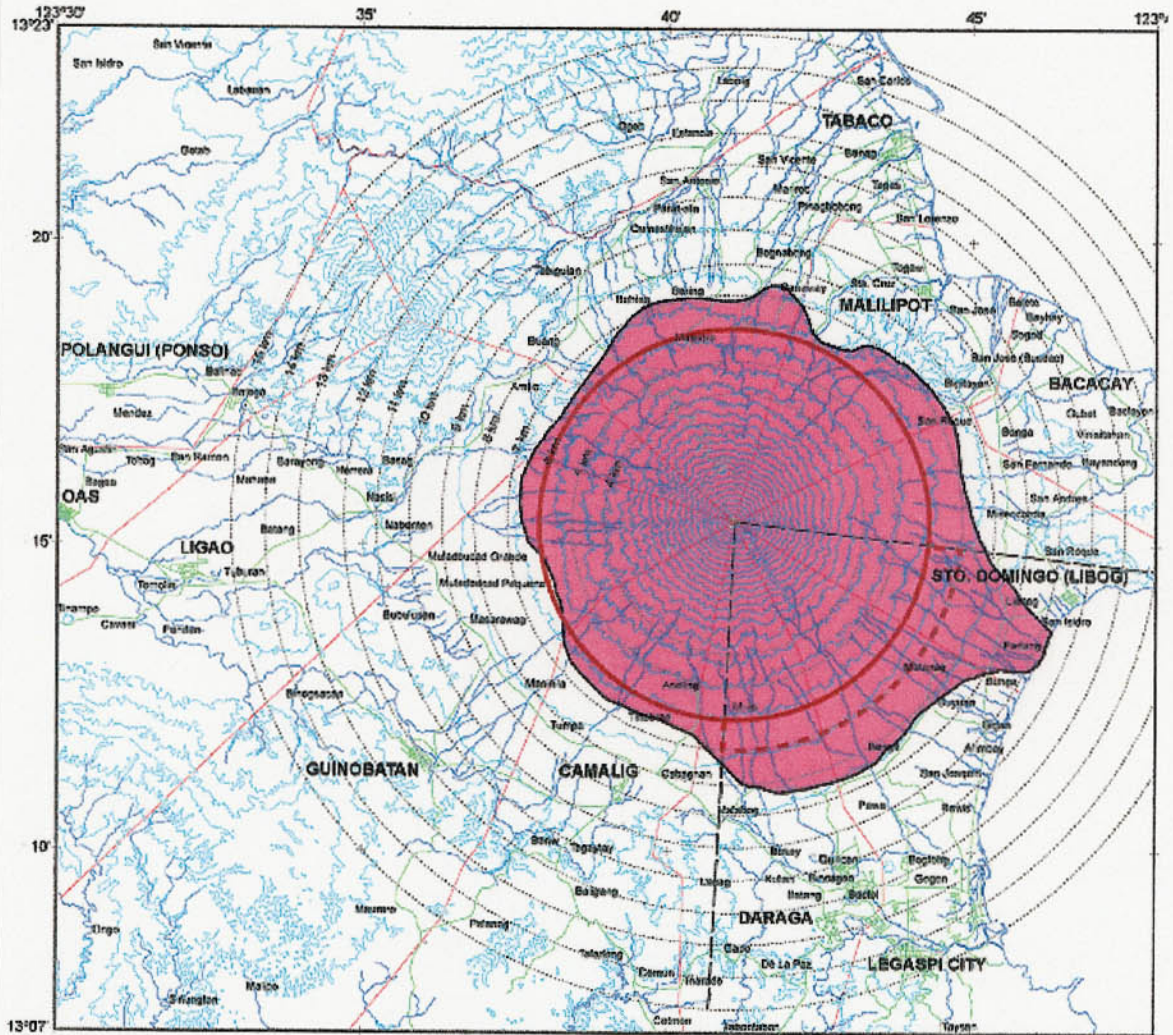
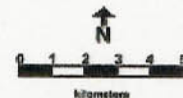


1999 MAYON VOLCANO PYROCLASTIC FLOW HAZARDS MAP



LEGEND

- Municipal Boundary
- Roads
- River Channels
- Contours (100-m Intervals)
- 6 km-Radius Permanent Danger Zone (PDZ)
- - - Additional Area Highly Susceptible to Pyroclastic Flow-Generating Events
- Areas Prone to Pyroclastic Flow



Data were derived based on
SRTM30+ dataset (1999) and 1:50,000
scale maps as appropriate.
Reproduction of this map is prohibited.

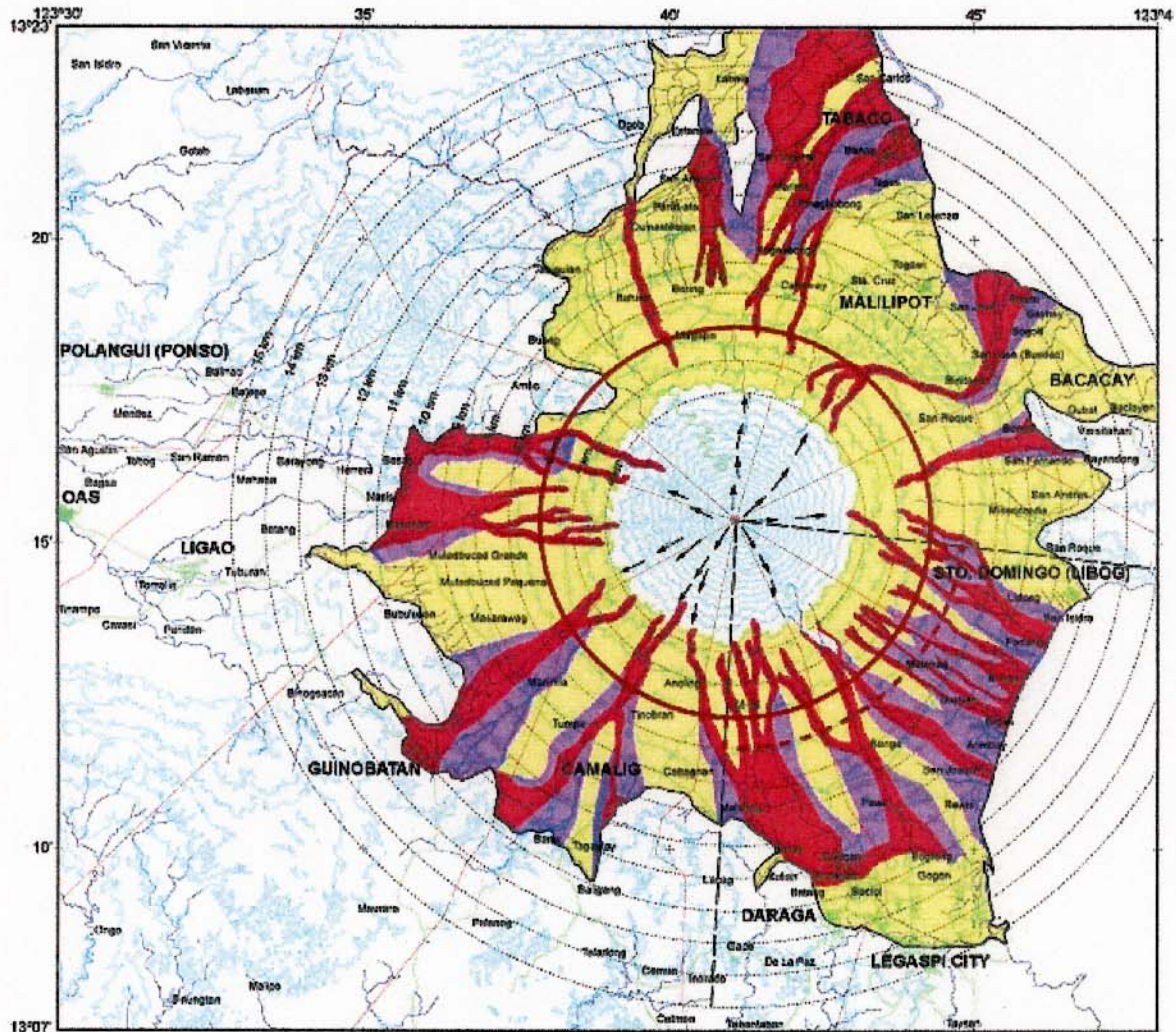
Department of Science and Technology
 Philippine Institute of Volcanology and Seismology
 D.P. Garcia Ave., U.P. Diliman Campus
 1102 Quezon City
 June 1999

**COMPREHENSIVE DISASTER PREVENTION
AROUND MAYON VOLCANO IN
THE REPUBLIC OF THE PHILIPPINES**

JAPAN INTERNATIONAL COOPERATION AGENCY

**Figure VI 3.6
1999 Mayon Volcano Pyroclastic Flow Hazards
Map**

1999 MAYON VOLCANO LAHAR HAZARDS MAP



LEGEND

- Municipal Boundary
- Roads
- River Channels
- Contours (100-m intervals)
- 6 km-Radius Permanent Danger Zone (PDZ)
- Additional Areas Highly Susceptible to Pyroclastic Flow-Generating Events
- Areas Least Prone to Lahar
- Areas Moderately Prone to Lahar
- Areas Highly Prone to Lahar



Topographic contour lines from 1:50,000 and 1:25,000 maps are approximated. Elevation contours are 100 m intervals.

Department of Science and Technology
 Philippine Institute of Volcanology and Seismology
 O.P. Gerosa Ave., U.P. Diliman Campus
 1106 Quezon City
 June 1999

COMPREHENSIVE DISASTER PREVENTION
 AROUND MAYON VOLCANO IN
 THE REPUBLIC OF THE PHILIPPINES

JAPAN INTERNATIONAL COOPERATION AGENCY

Figure VI 3.7
Mayon Volcano Lahar Flow Hazard Map
 revised by PHIVOLCS on 1999