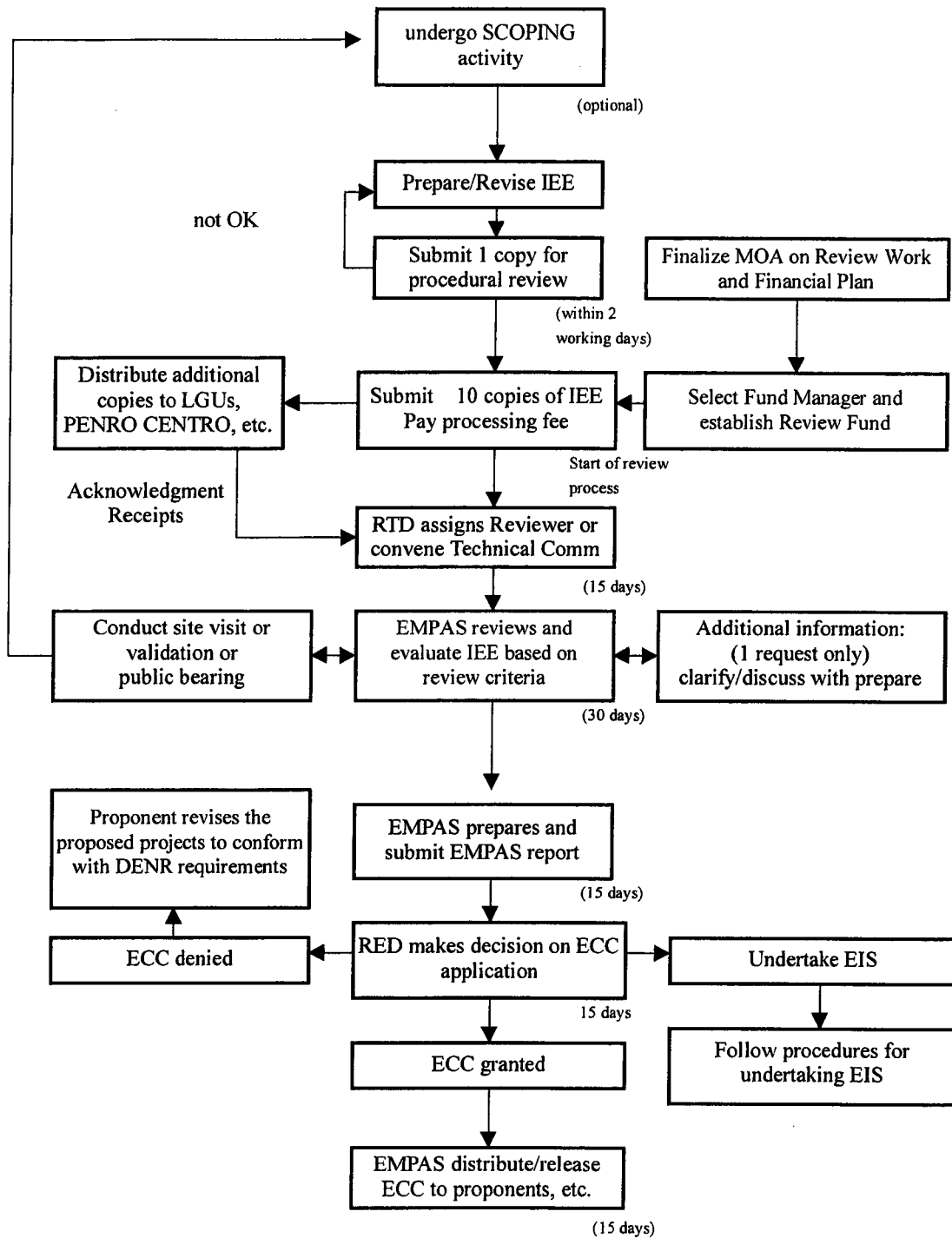


*The Study on Comprehensive Disaster Prevention  
around Mayon Volcano*

**Volume II - MAIN REPORT**

*(Figures)*

**FLOW CHART of IEE REVIEW PROCESS**

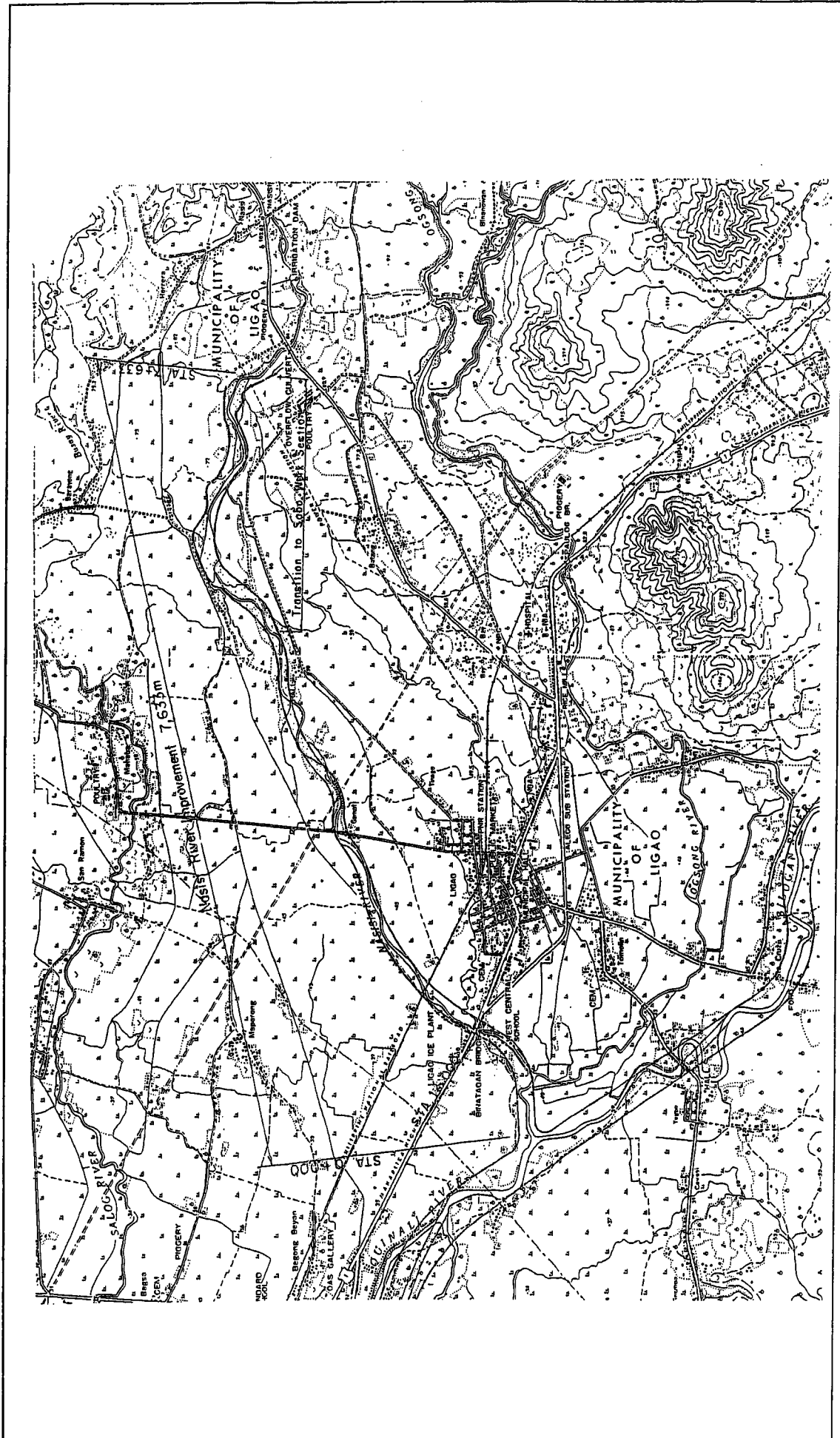


COMPREHENSIVE DISASTER PREVENTION  
AROUND MAYON VOLCANO IN  
THE REPUBLIC OF THE PHILIPPINES

JAPAN INTERNATIONAL COOPERATION AGENCY

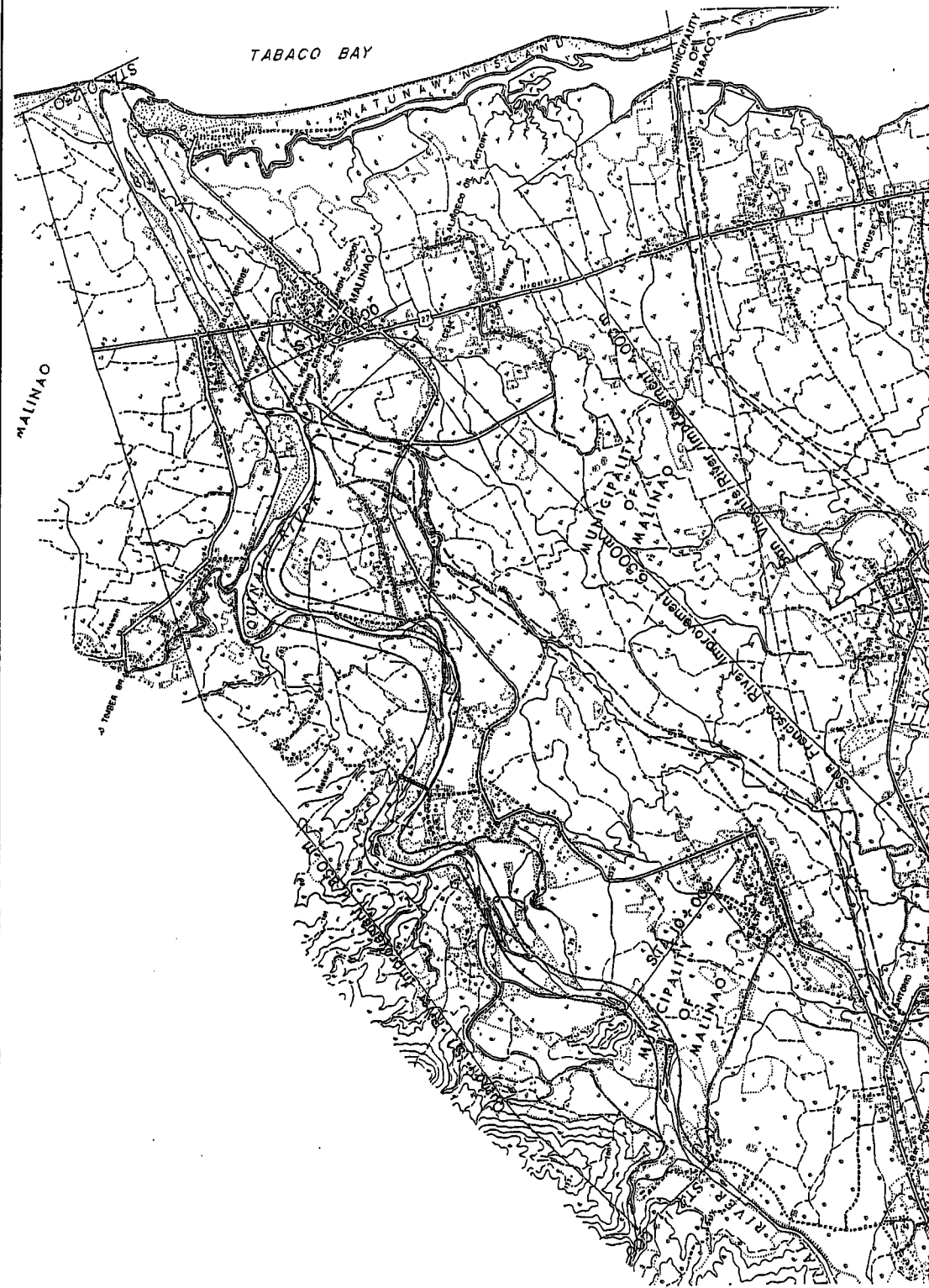
**Figure 3.2.1**

**Process Flow for IEE Review by EMPAS**



**Figure 3.5.1**  
**River Improvement Plan for the Nasisi River Recommended by**  
**the Master Plan (1981)**

**COMPREHENSIVE DISASTER PREVENTION AROUND MAYON VOLCANO IN**  
**THE REPUBLIC OF THE PHILIPPINES**  
**JAPAN INTERNATIONAL COOPERATION AGENCY**



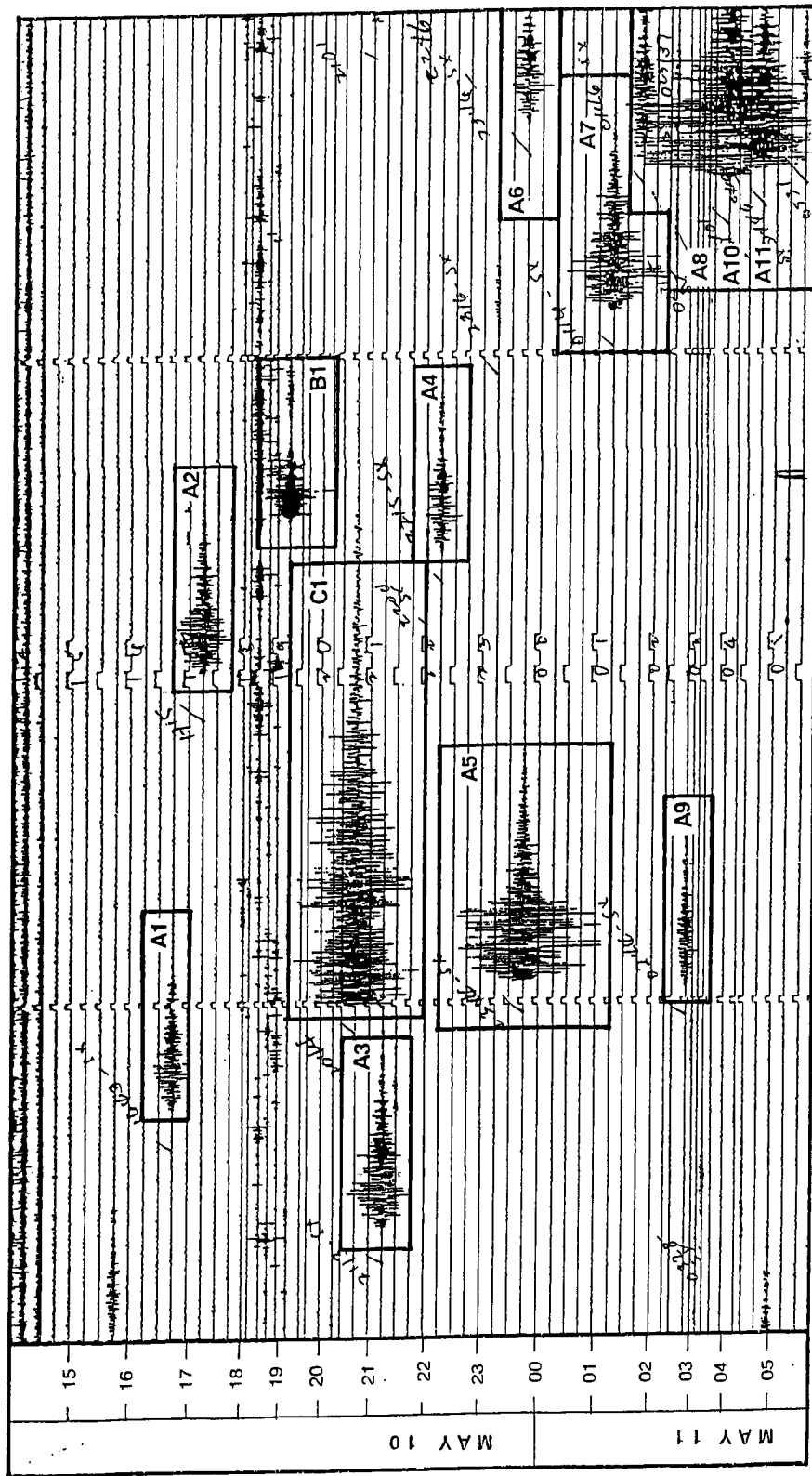
**Figure 3.5.2**  
**River Improvement Plan for the Quinali (B) River**  
**Recommended by the Master Plan (1981)**

**COMPREHENSIVE DISASTER PREVENTION AROUND MAYON VOLCANO IN**  
**THE REPUBLIC OF THE PHILIPPINES**  
**JAPAN INTERNATIONAL COOPERATION AGENCY**



**Figure 3.5.3**  
**River Improvement Plan for the Yawa River Recommended by**  
**the Master Plan (1981)**

**COMPREHENSIVE DISASTER PREVENTION AROUND MAYON VOLCANO IN**  
**THE REPUBLIC OF THE PHILIPPINES**  
**JAPAN INTERNATIONAL COOPERATION AGENCY**



Note: A1-A11 : Seismic waves reflect the movement of magma

B1 : Seismic wave supposedly reflects the movement of a Heavy Equipment

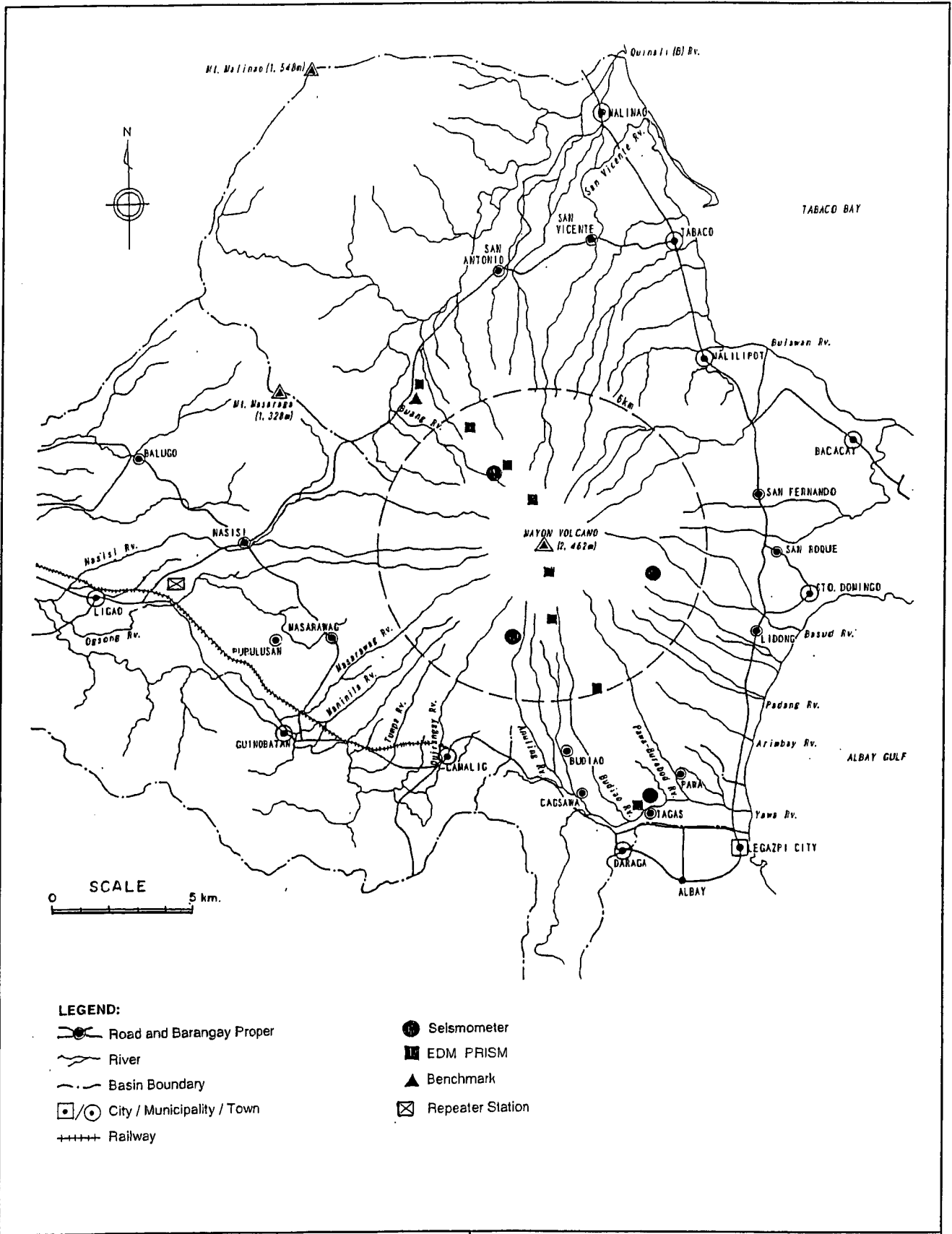
C1 : Seismic wave reflects tectonic earthquake

**COMPREHENSIVE DISASTER PREVENTION AROUND MAYON VOLCANO IN THE REPUBLIC OF THE PHILIPPINES**

**JAPAN INTERNATIONAL COOPERATION AGENCY**

**Figure 3.6.1  
RECORDED SEISMOGRAPH**

(A part of record from 10 May 14:00 to 11 May 05:45, 1998)

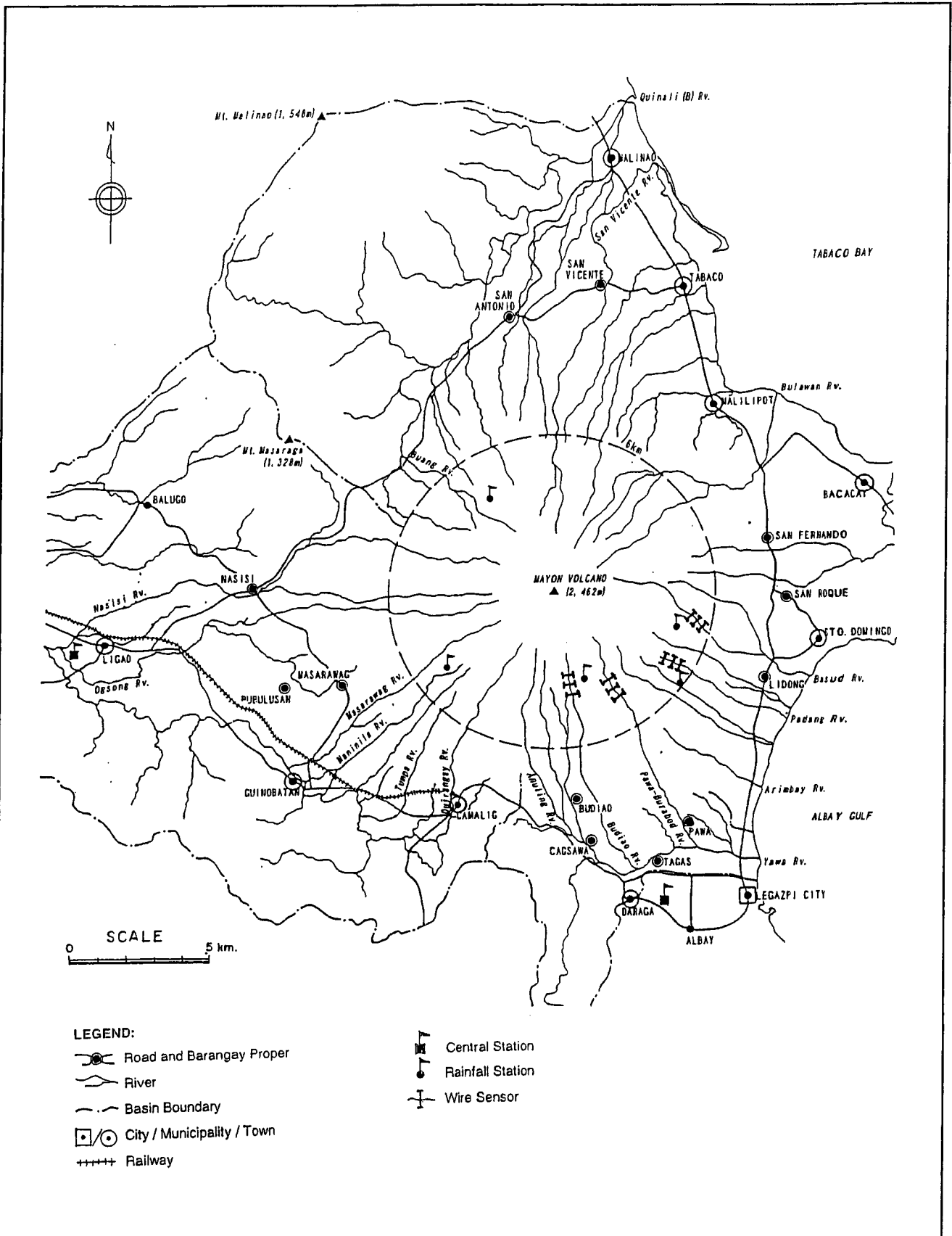


**COMPREHENSIVE DISASTER PREVENTION  
AROUND MAYON VOLCANO IN  
THE REPUBLIC OF THE PHILIPPINES**

---

**JAPAN INTERNATIONAL COOPERATION AGENCY**

**Figure 3.6.2**  
**Location of Eruption Monitoring Site  
(PHIVOLCS)**

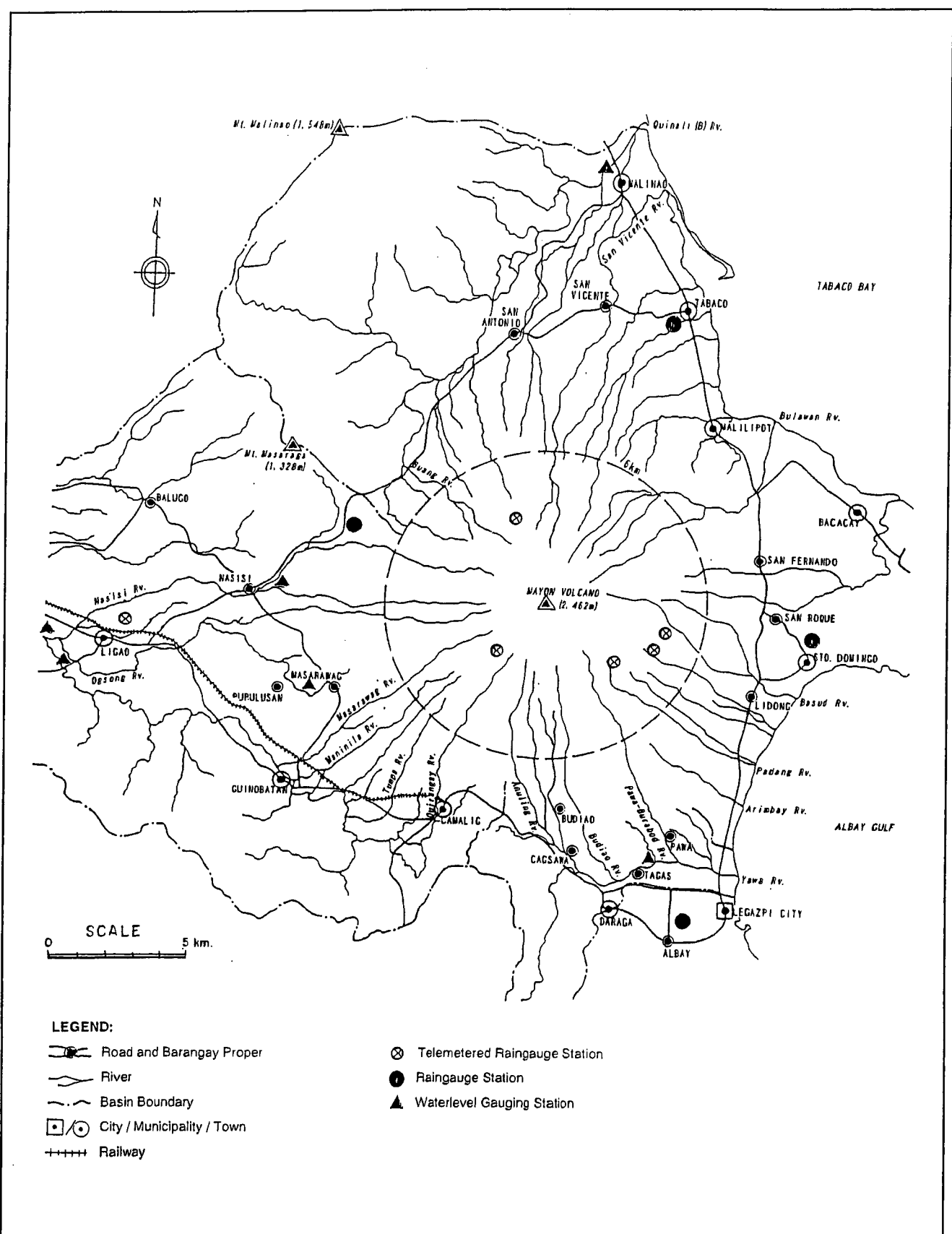


COMPREHENSIVE DISASTER PREVENTION  
AROUND MAYON VOLCANO IN  
THE REPUBLIC OF THE PHILIPPINES

JAPAN INTERNATIONAL COOPERATION AGENCY

Figure 3.6.3  
Location of Lahar Monitoring Site





- LEGEND:**
- Road and Barangay Proper
  - River
  - Basin Boundary
  - City / Municipality / Town
  - Railway
  - Telemetered Raingauge Station
  - Raingauge Station
  - Waterlevel Gauging Station

**COMPREHENSIVE DISASTER PREVENTION  
AROUND MAYON VOLCANO IN  
THE REPUBLIC OF THE PHILIPPINES**

**JAPAN INTERNATIONAL COOPERATION AGENCY**

**Figure 3.6.4**  
**Location of Hydrologic Monitoring Site**

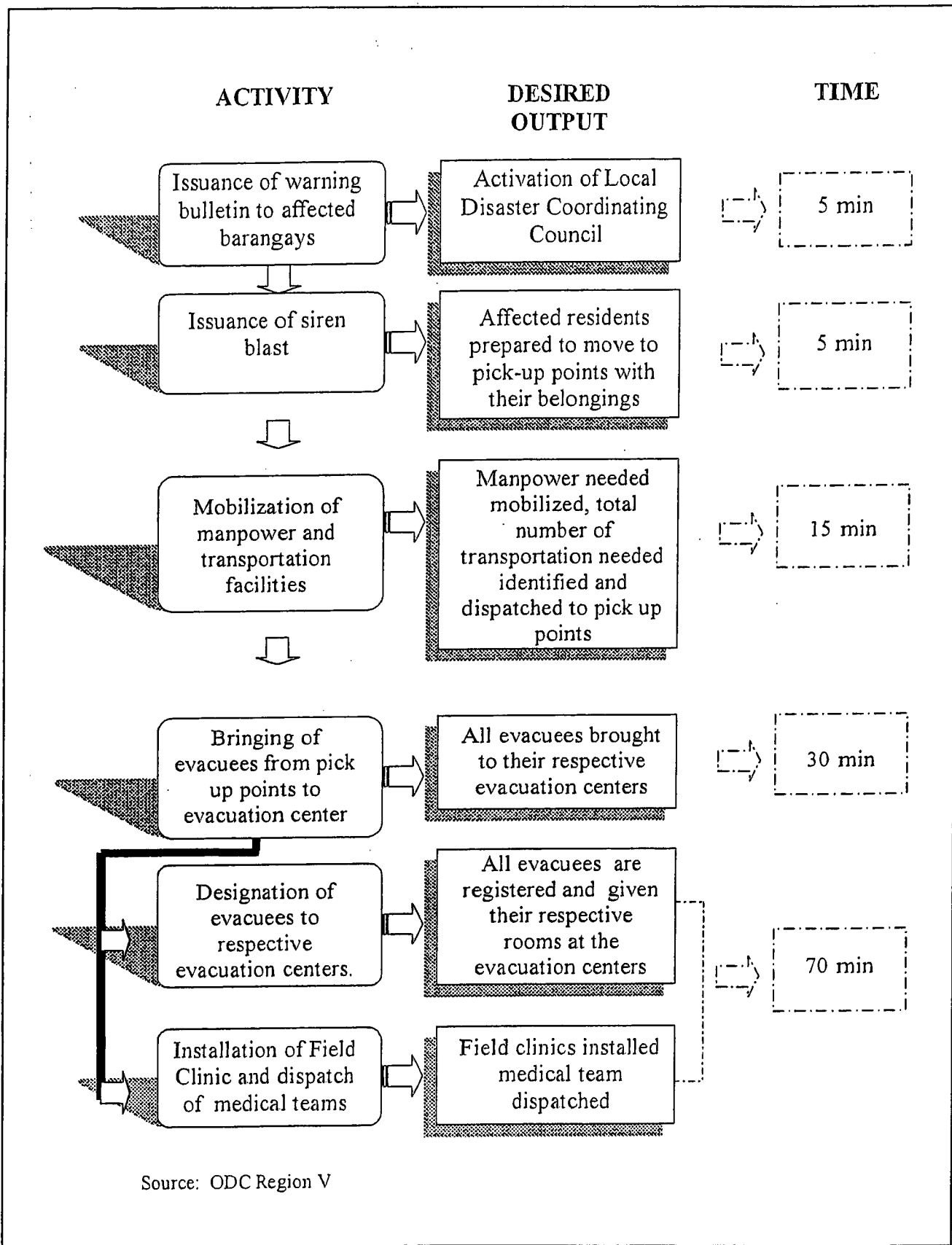


Figure 3.7.1  
 Evacuation Steps for Lahar (Mudflows)

Typhoon Warning  
Signal No. 1



Member agencies of P/C/MDCCs  
are on standby on monitoring of  
warning informations/advisories  
from local PAG-ASA

Typhoon Warning  
Signal No. 2



PDCC releases advisories to  
P/M/BDCCs



DECS announces  
the identified safe  
evacuation centers

P/C/MDCCs  
preposition  
transportation  
support facilities  
and relief goods

Other member  
agencies are in  
standby for  
emergency support

Residents of  
threatened barangays  
are advised for  
possible or immediate  
evacuation

Typhoon Warning  
Signal Nos. 3 and  
4



P/C/M BDCCs see  
to it that evacuation  
of residents in  
danger zone is  
complete

C/M/BDCCs  
periodically report  
to PDCC regarding  
the status of  
evacuation in their  
respective areas

P/C/M/BDCCs  
provides relief  
assistance to  
evacuation centers

COMPREHENSIVE DISASTER PREVENTION  
AROUND MAYON VOLCANO IN  
THE REPUBLIC OF THE PHILIPPINES

JAPAN INTERNATIONAL COOPERATION AGENCY

Figure 3.7.2

Flow of Activities During Typhoons

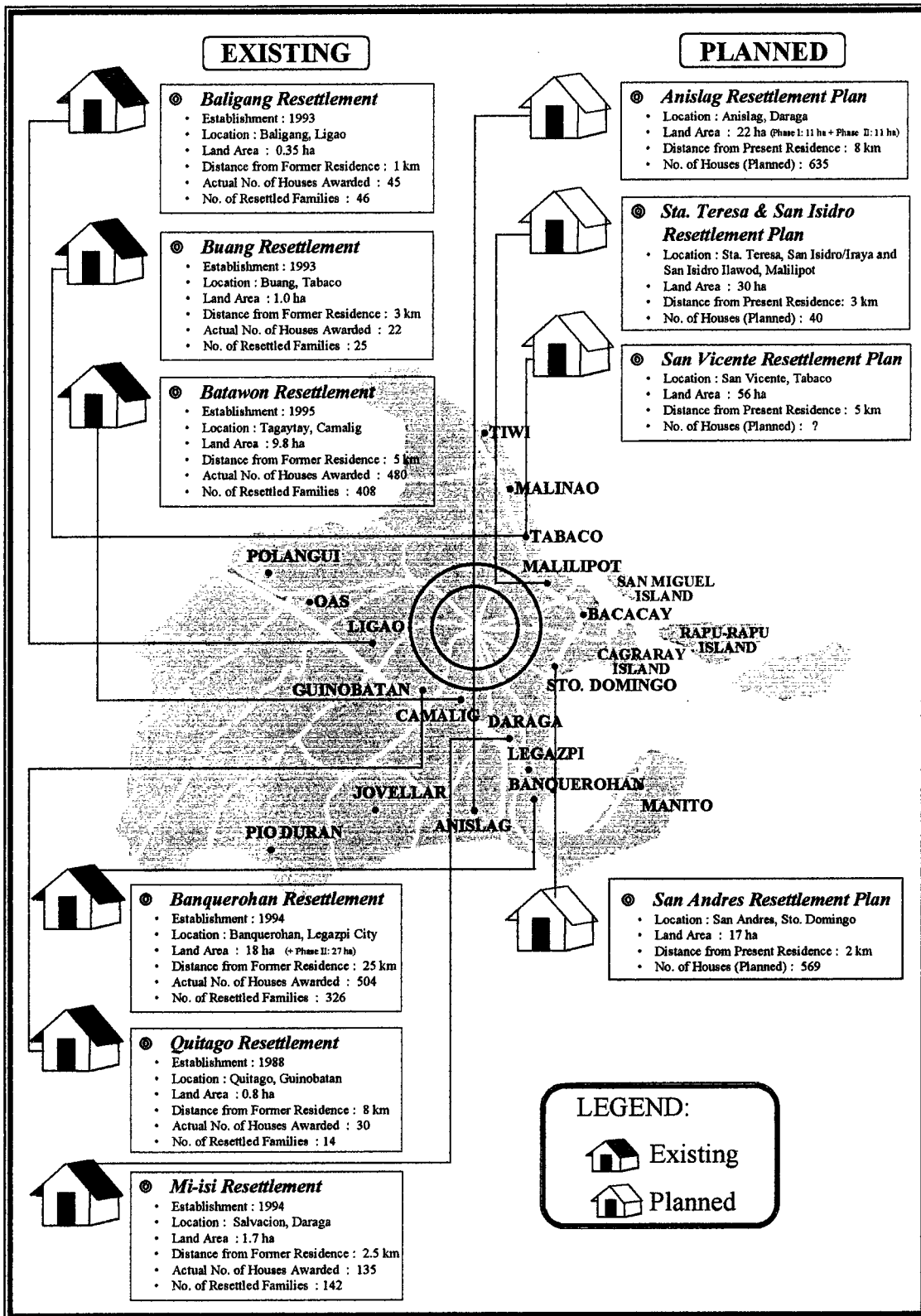
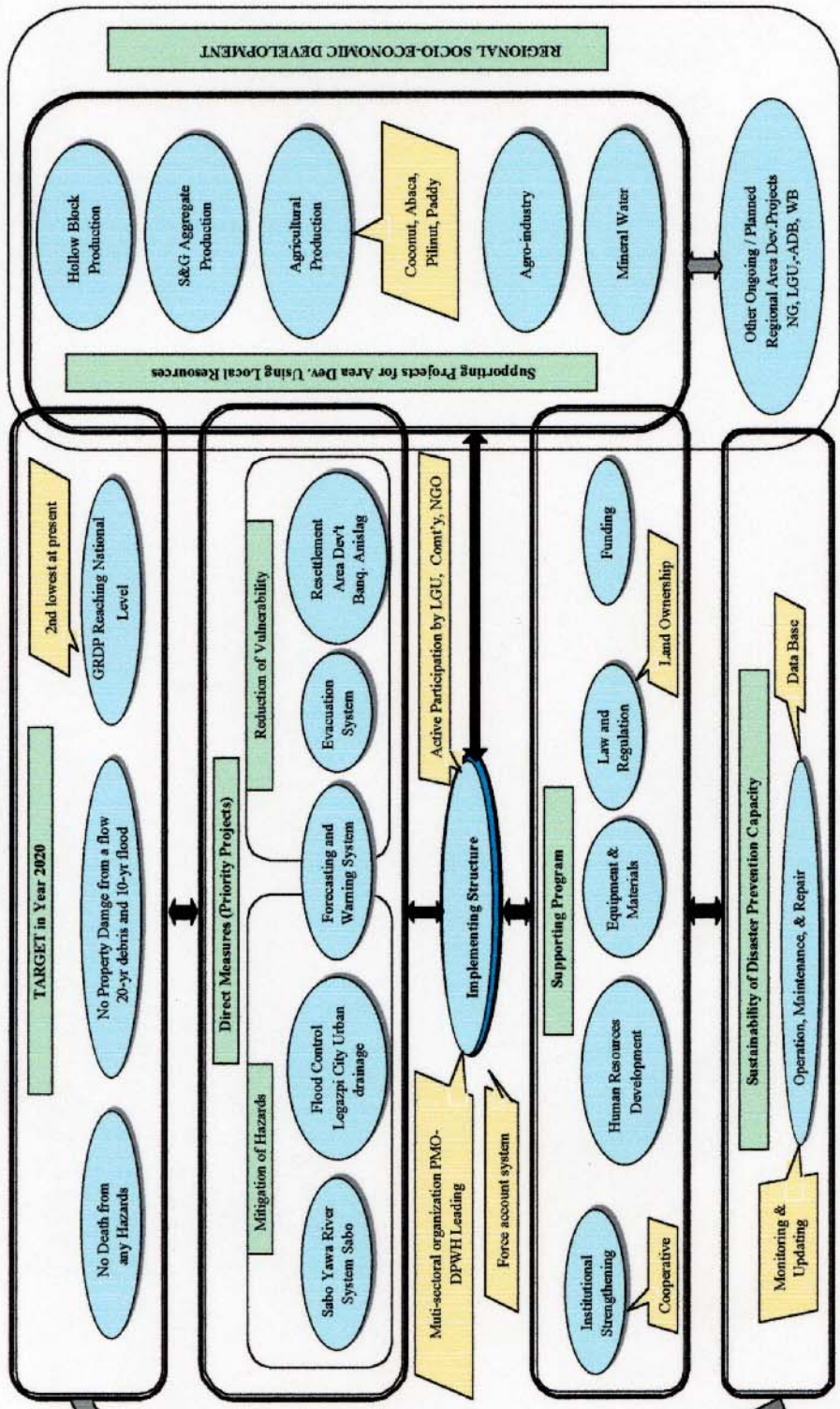


Figure 3.8.1

Existing and Planned Resettlement Projects  
around Mayon Volcano, Albay Province

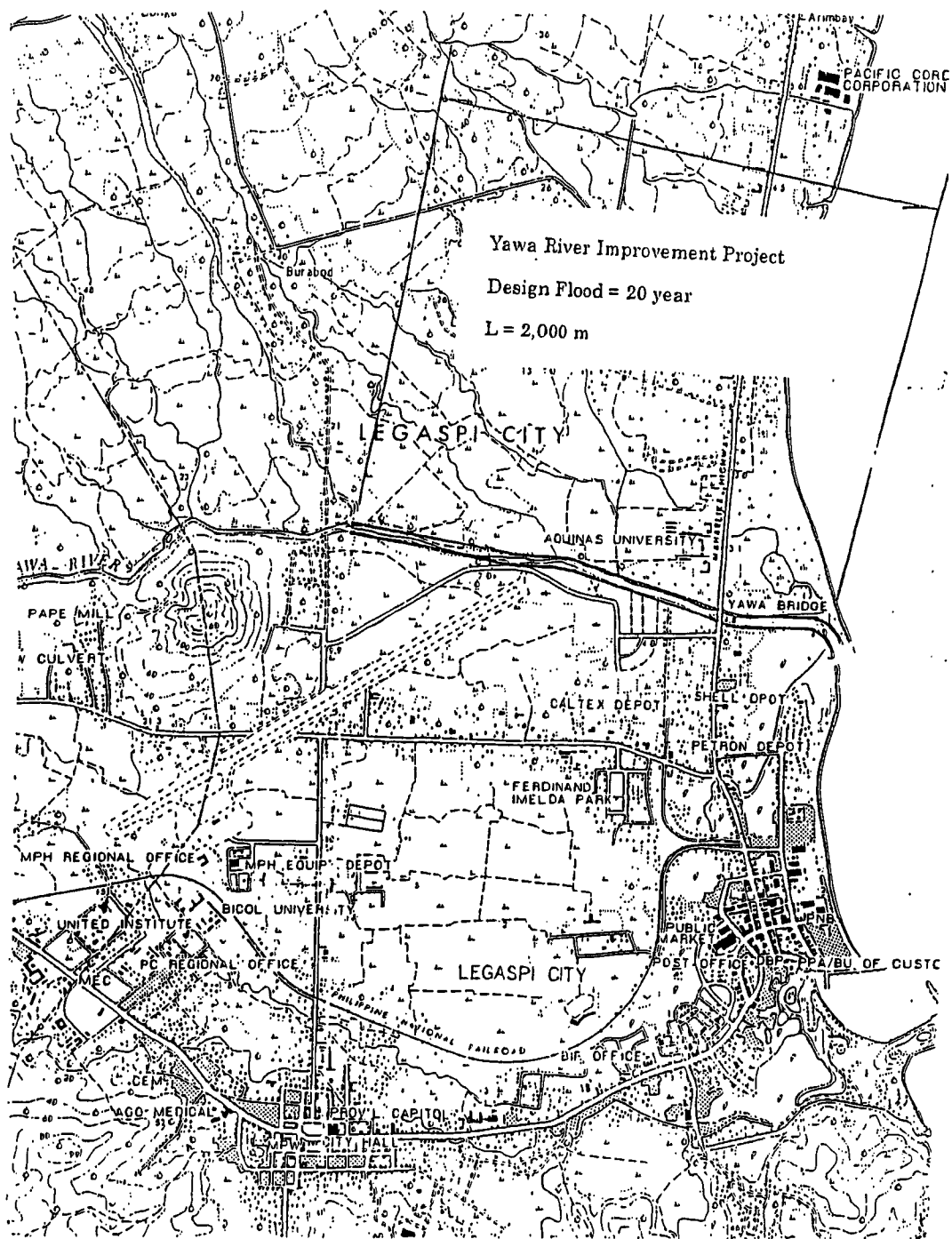
COMPREHENSIVE DISASTER PREVENTION AROUND MAYON VOLCANO

Destructive Hazards have occurred frequently in the Project Area HAZARDS x VULNERABILITY = DISASTER  
 Objective Hazard: Eruption, Debris Flow, Flood, Typhoon  
 Vulnerability: Living in hazardous area, Vulnerable people, Economic weakness, Poor infrastructure, Institutional weakness



**Figure 4.2.1**  
**Targets of the Comprehensive Disaster Prevention and Its Framework**

COMPREHENSIVE DISASTER PREVENTION AROUND MAYON VOLCANO IN THE REPUBLIC OF THE PHILIPPINES  
 JAPAN INTERNATIONAL COOPERATION AGENCY

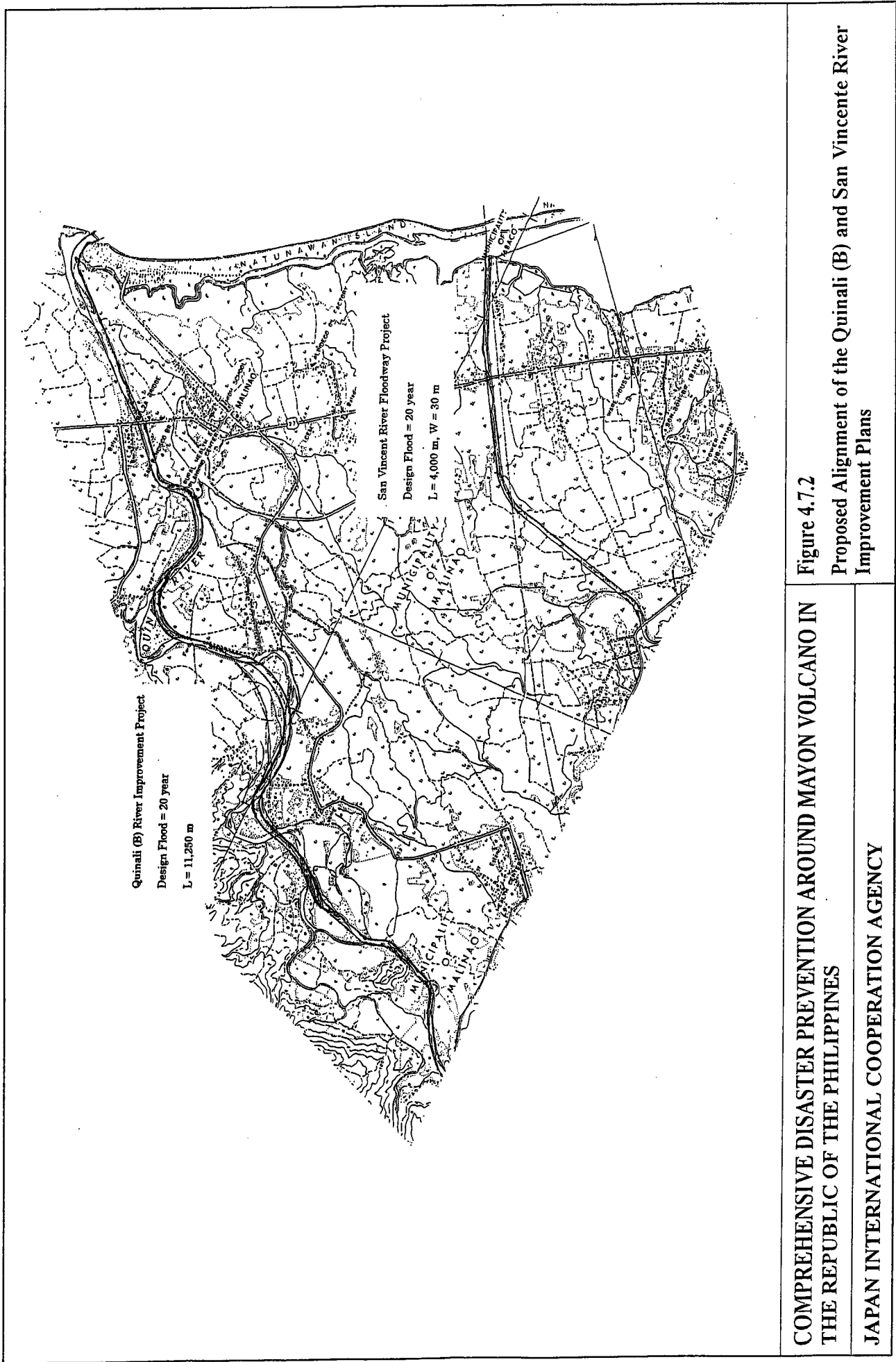


COMPREHENSIVE DISASTER PREVENTION  
 AROUND MAYON VOLCANO IN  
 THE REPUBLIC OF THE PHILIPPINES

JAPAN INTERNATIONAL COOPERATION AGENCY

Figure 4.7.1

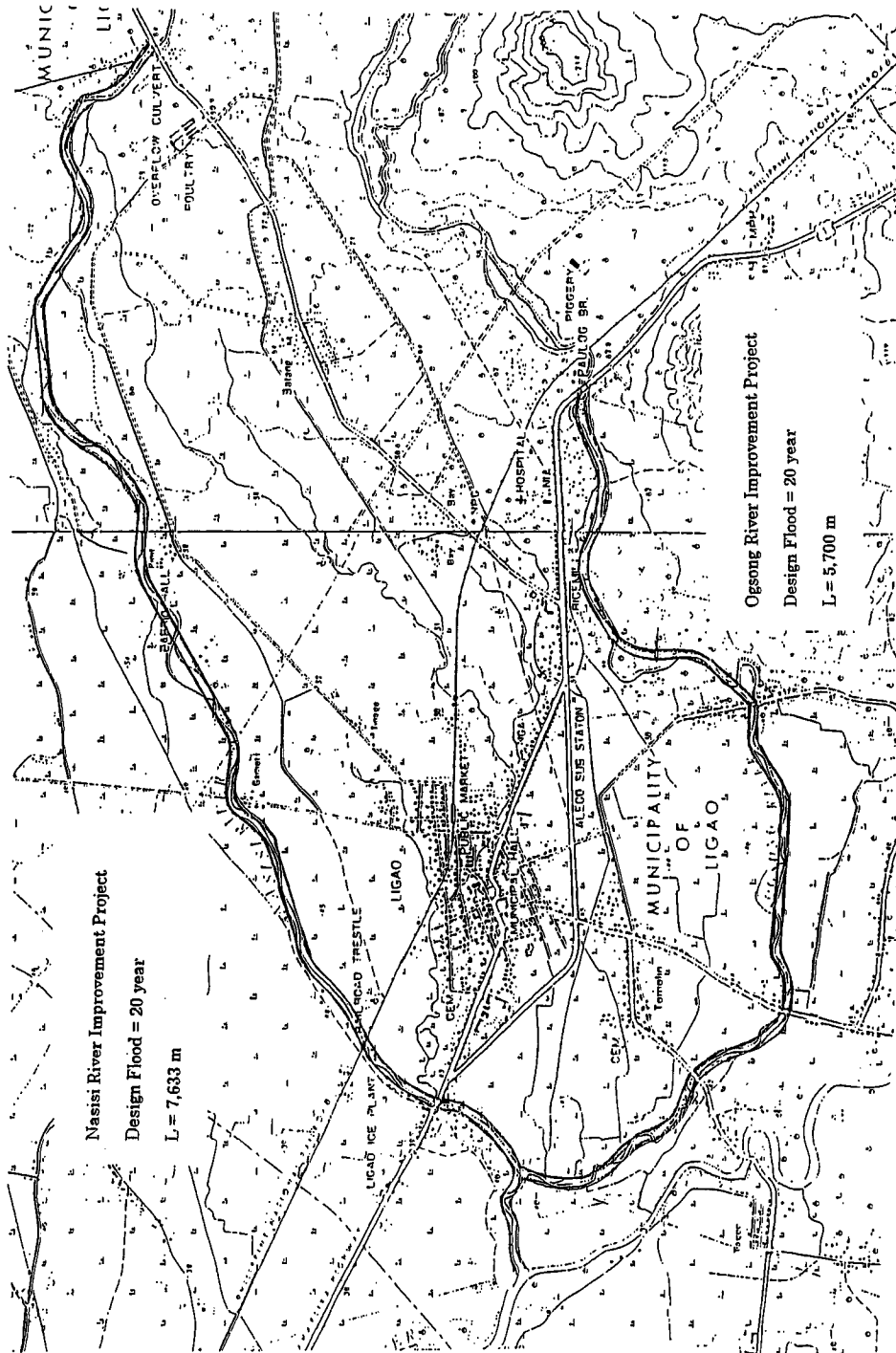
Proposed Alignment of the Yawa River  
 Improvement Plan



**Figure 4.7.2**  
**Proposed Alignment of the Quinali (B) and San Vincente River Improvement Plans**

**COMPREHENSIVE DISASTER PREVENTION AROUND MAYON VOLCANO IN THE REPUBLIC OF THE PHILIPPINES**

**JAPAN INTERNATIONAL COOPERATION AGENCY**



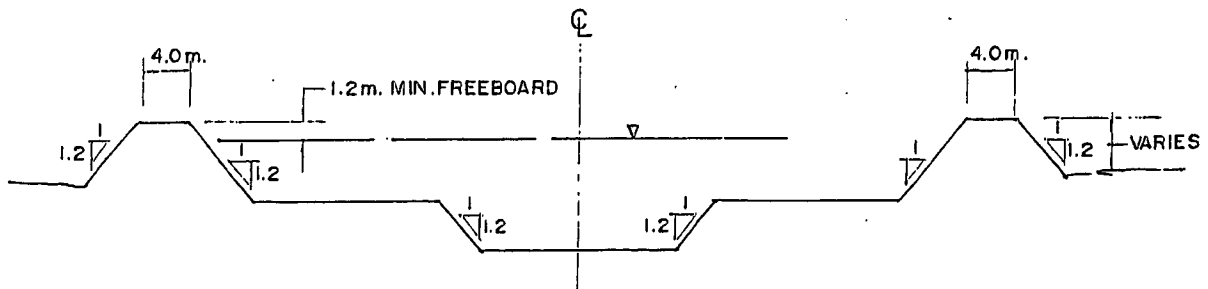
**COMPREHENSIVE DISASTER PREVENTION AROUND MAYON VOLCANO IN THE REPUBLIC OF THE PHILIPPINES**

**Figure 4.7.3  
Proposed Alignment of the Nasisi and Ogsong River Improvement Plan**

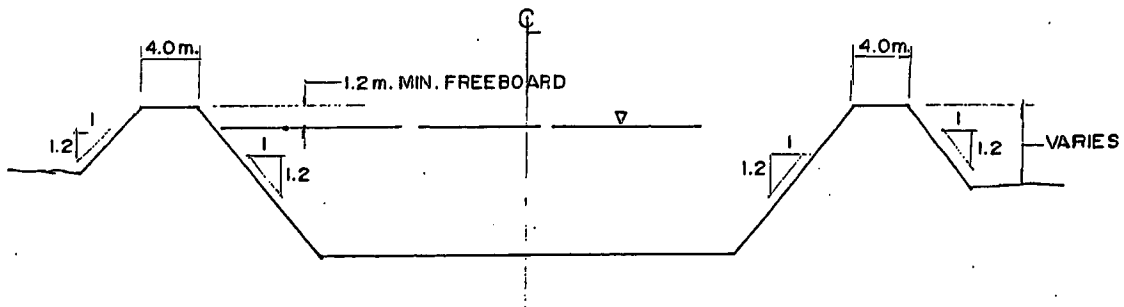
**JAPAN INTERNATIONAL COOPERATION AGENCY**



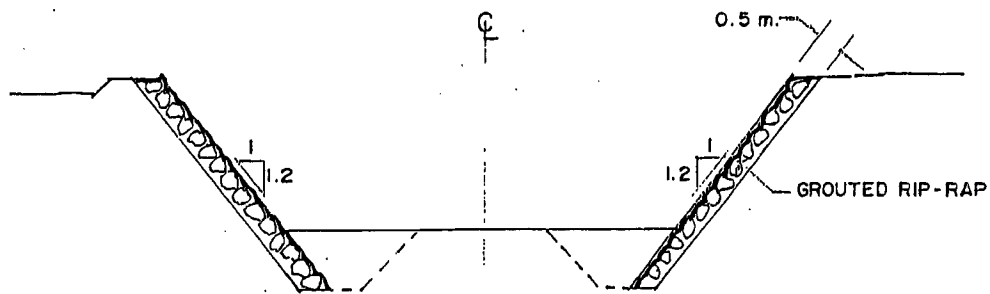
1 ) YAWA , QUINALI ( B ) ( DOUBLE TRAPEZOID )



2 ) OTHERS ( SINGLE TRAPEZOID )

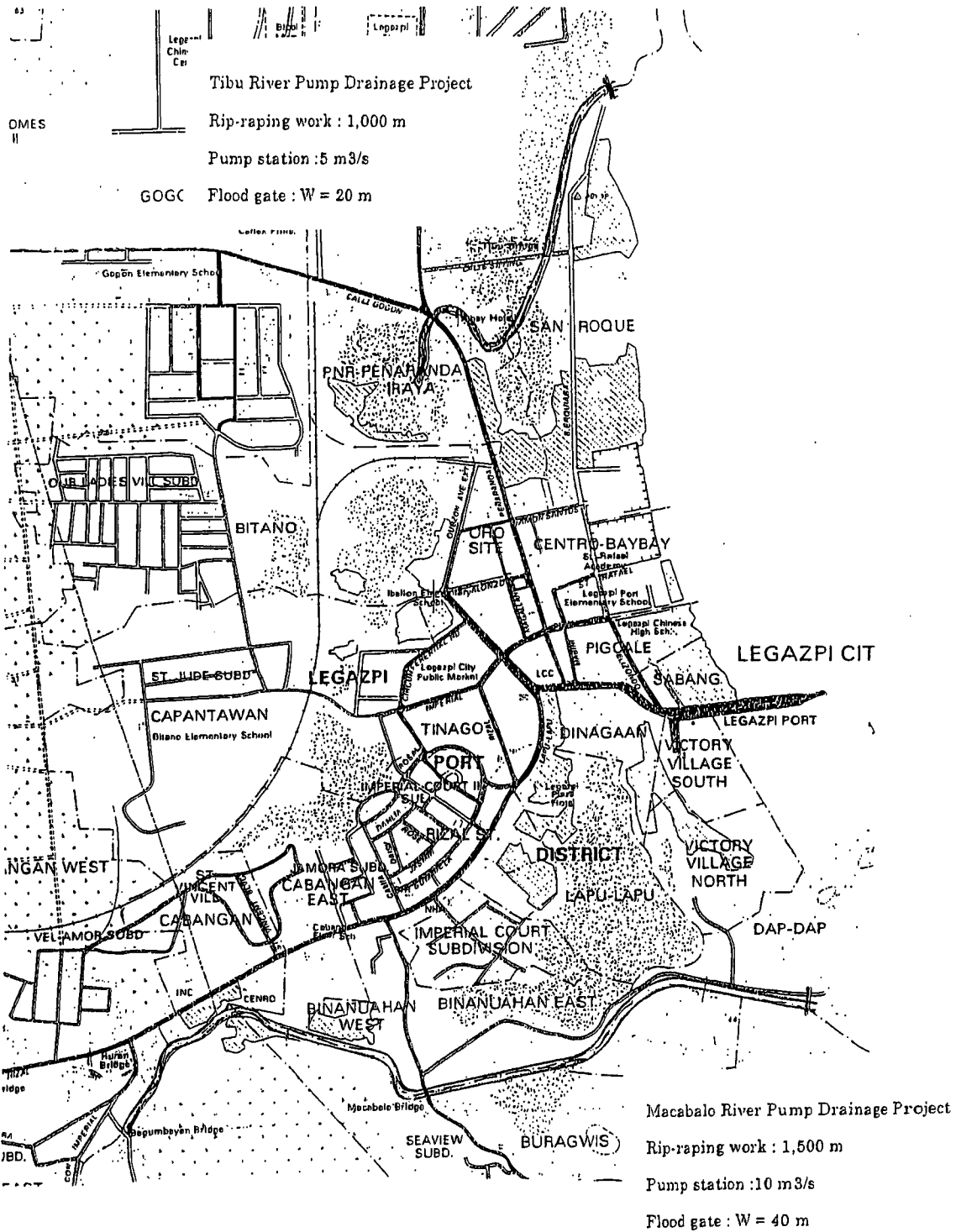


3 ) ESTEROS IN LEGAZPI CITY ( RIP-RAPING WORKS )



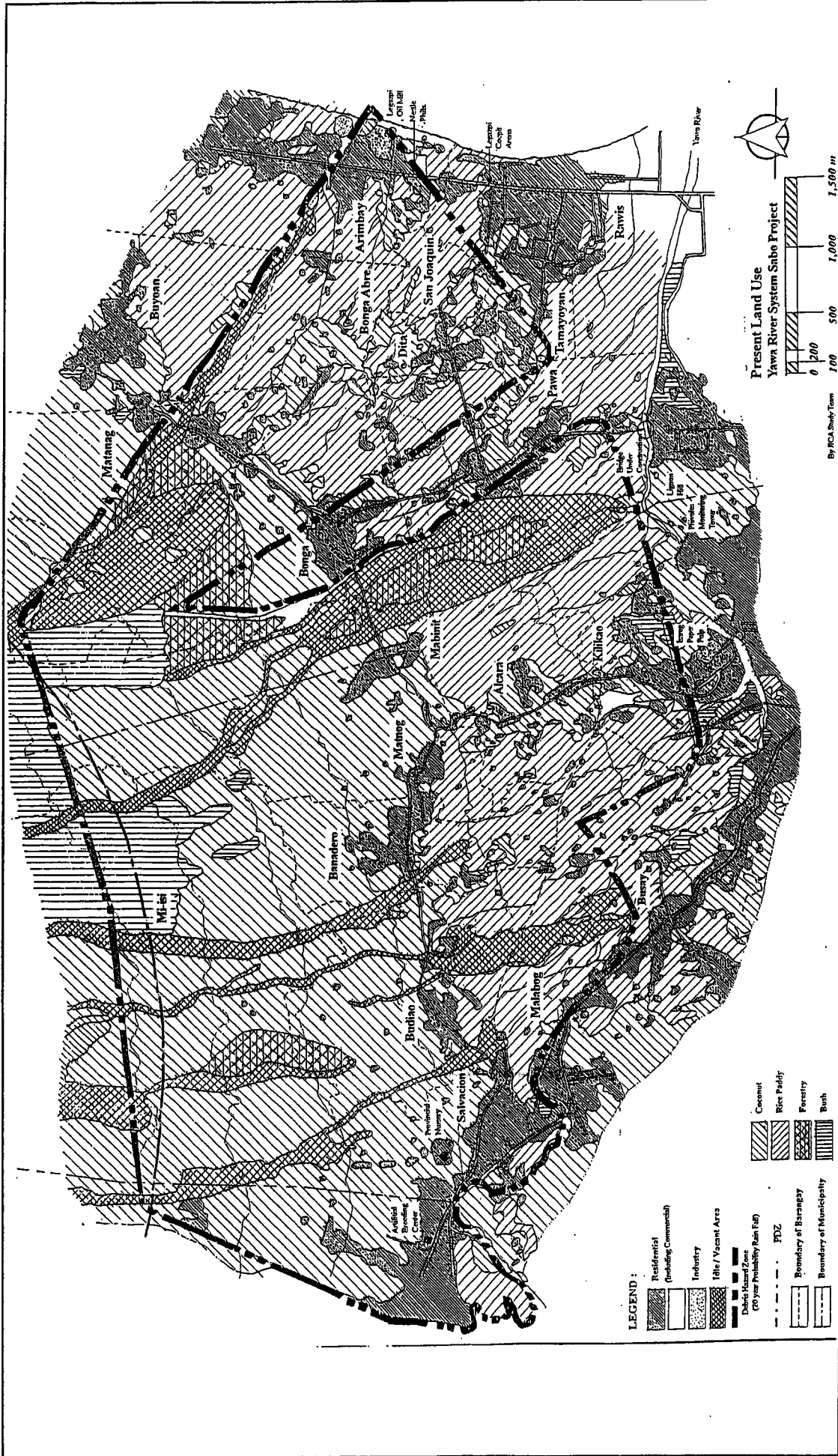
COMPREHENSIVE DISASTER PREVENTION  
AROUND MAYON VOLCANO IN  
THE REPUBLIC OF THE PHILIPPINES  
JAPAN INTERNATIONAL COOPERATION AGENCY

Figure 4.7.4  
Typical Cross Sections for Proposed River  
Improvement and Urban Drainage Plans



COMPREHENSIVE DISASTER PREVENTION  
 AROUND MAYON VOLCANO IN  
 THE REPUBLIC OF THE PHILIPPINES  
 JAPAN INTERNATIONAL COOPERATION AGENCY

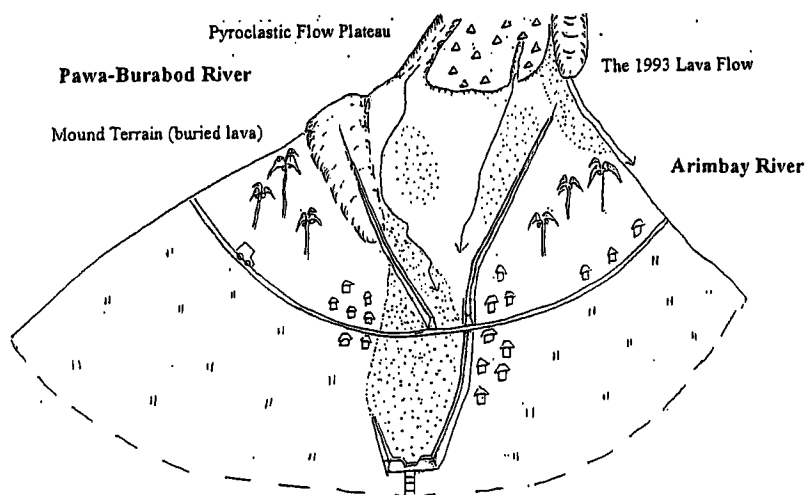
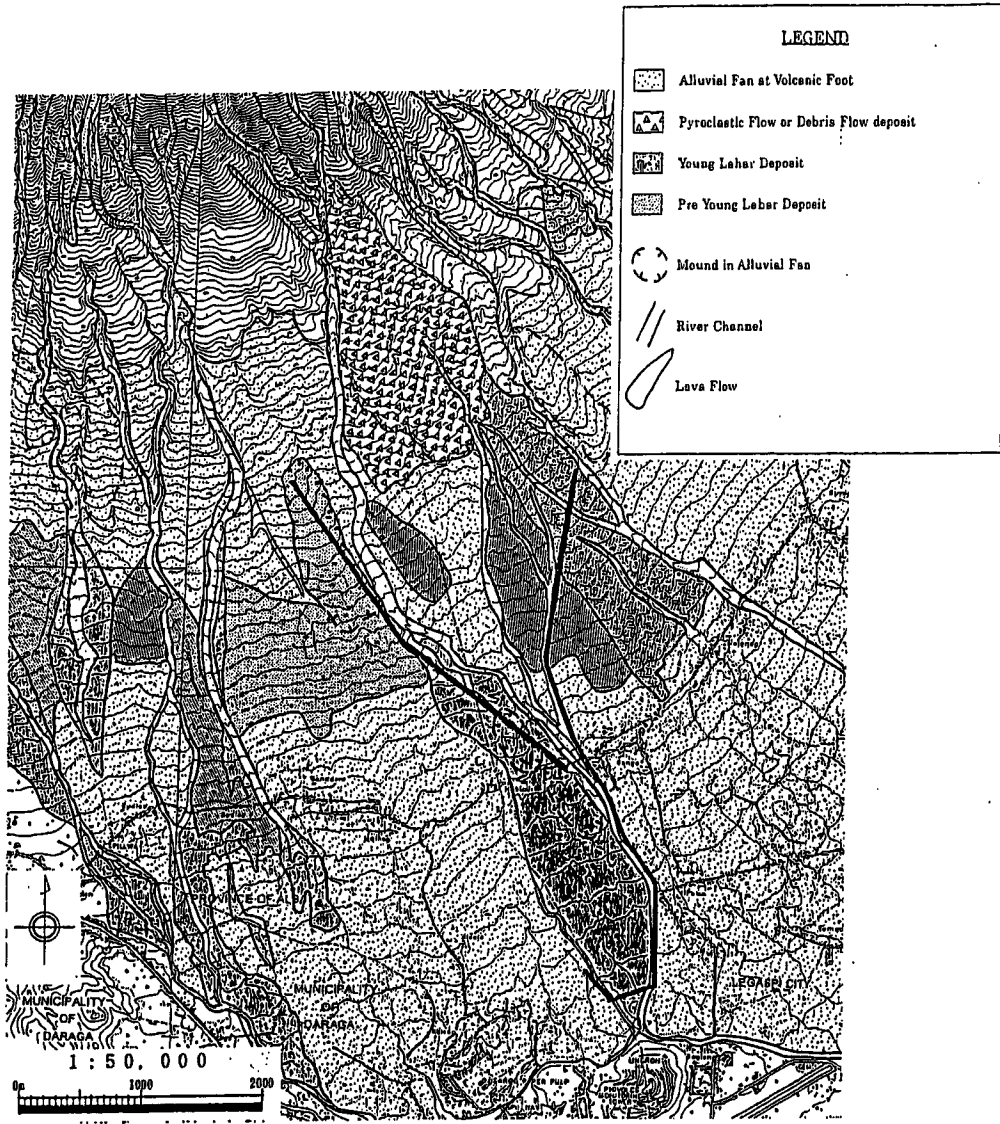
Figure 4.7.5  
 Proposed Alignment of the Legazpi Urban  
 Drainage Plan



**Figure 8.1.1**  
**Present Land Use**

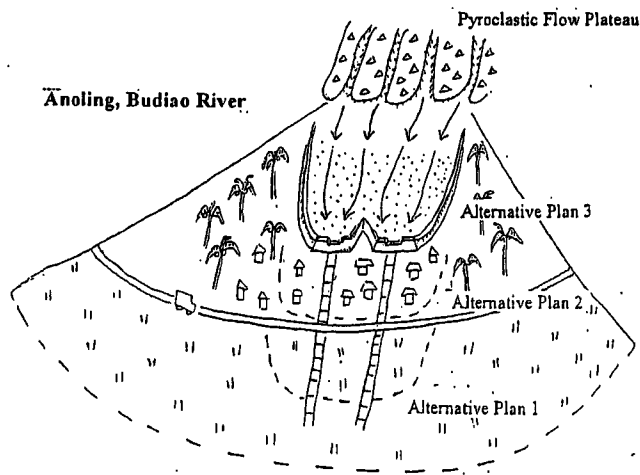
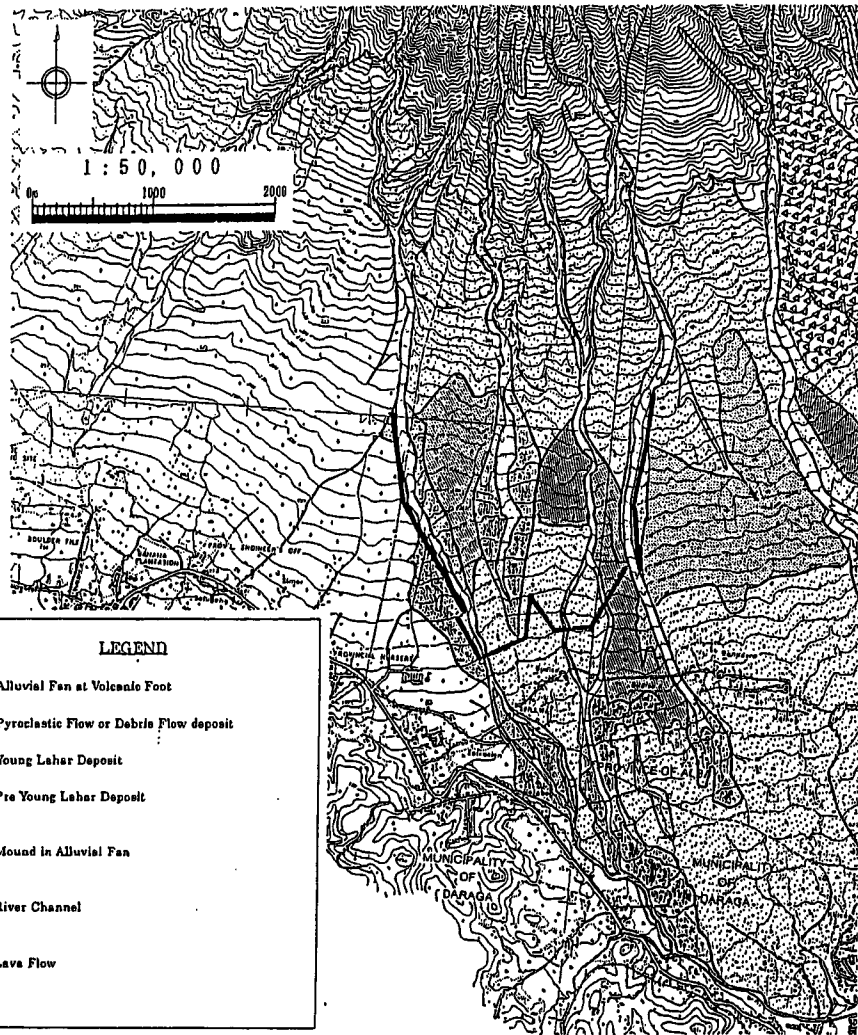
**COMPREHENSIVE DISASTER PREVENTION AROUND MAYON VOLCANO IN THE REPUBLIC OF THE PHILIPPINES**

**JAPAN INTERNATIONAL COOPERATION AGENCY**



COMPREHENSIVE DISASTER PREVENTION  
 AROUND MAYON VOLCANO IN  
 THE REPUBLIC OF THE PHILIPPINES  
 JAPAN INTERNATIONAL COOPERATION AGENCY

Figure 8.1.2  
 Estimated Hazard Areas of the Pawa-Burabod  
 River



COMPREHENSIVE DISASTER PREVENTION  
AROUND MAYON VOLCANO IN  
THE REPUBLIC OF THE PHILIPPINES

JAPAN INTERNATIONAL COOPERATION AGENCY

Figure 8.1.3

Estimated Hazard Areas of the Anoling and the  
Budiao River