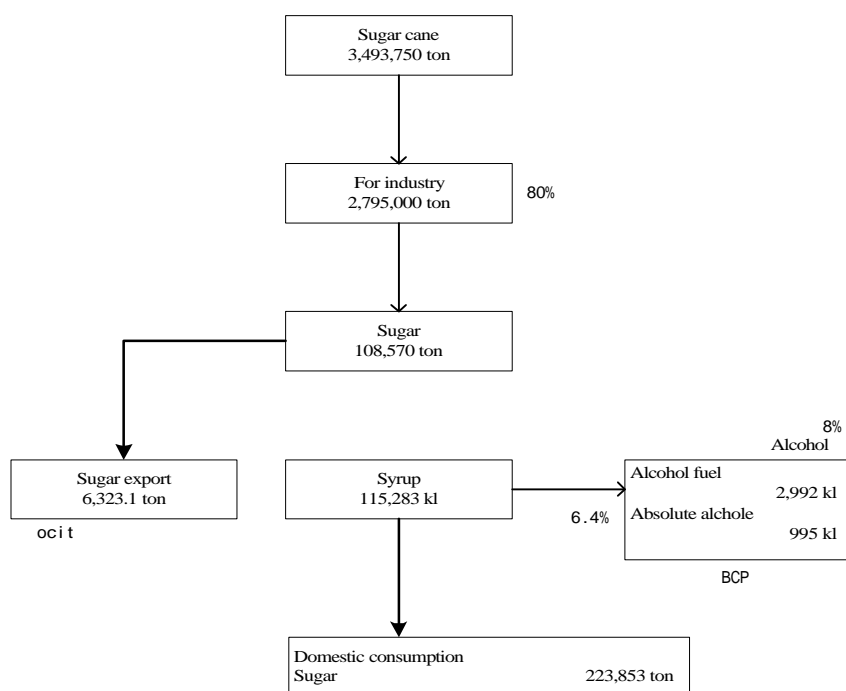


## Sugar cane:

About 80% of sugar cane produced is shipped to factories for sugar production. Only a small portion (6%) of the sugar produced is exported; the rest is for domestic consumption.

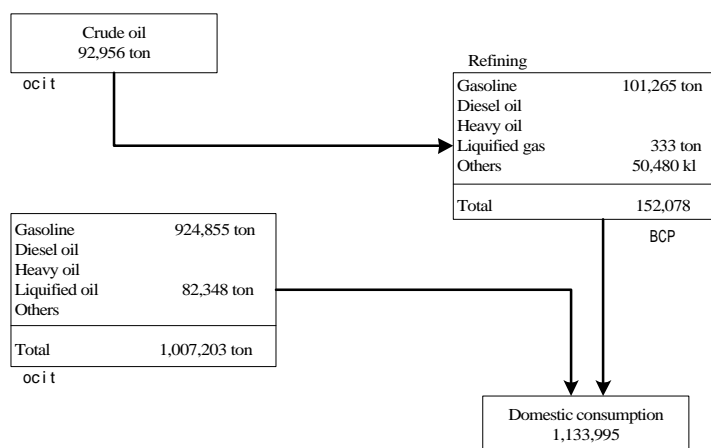
**Figure 21 Physical Distribution of Sugar Cane (1997)**



## Petroleum:

Crude oil and petroleum are imported in almost same proportion. Crude oil comes from Argentina by water transport and is discharged at PETROPAL in Villeta, from where it is distributed to the whole country after refining. Petroleum comes from Argentina (partly by truck), North America, and Europe by water transport, and from Brazil by truck.

**Figure 22 Physical Distribution of Crude Oil, Petroleum (1997)**



**Table 19 Crude Oil Import – Origin and Modes**

(unit: ton)

	Brazil	Argentina	Chile	Middle & South America	North America	Total
Truck	0	7,676	0	0	0	7,676
River	0	73,138	0	0	0	85,279
Aircraft	0	0	0	0	0	0
Railway	0	0	0	0	0	0
Total	0	80,814	0	0	0	92,956

Source: OCIT

**Table 20 Petroleum Import – Origin and Modes**

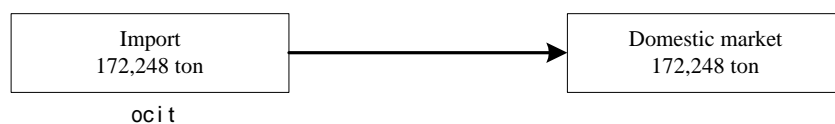
(unit: ton)

	Brazil	Argentina	Chile	Middle & South America	North America	Total
Truck	82,919	107,467	1,779	4,033	315	201,612
River	0	464,384	0	116,750	52,859	723,191
Aircraft	0	0	0	15	33	53
Railway	0	0	0	0	0	0
Total	82,919	571,851	1,779	120,799	53,207	924,855

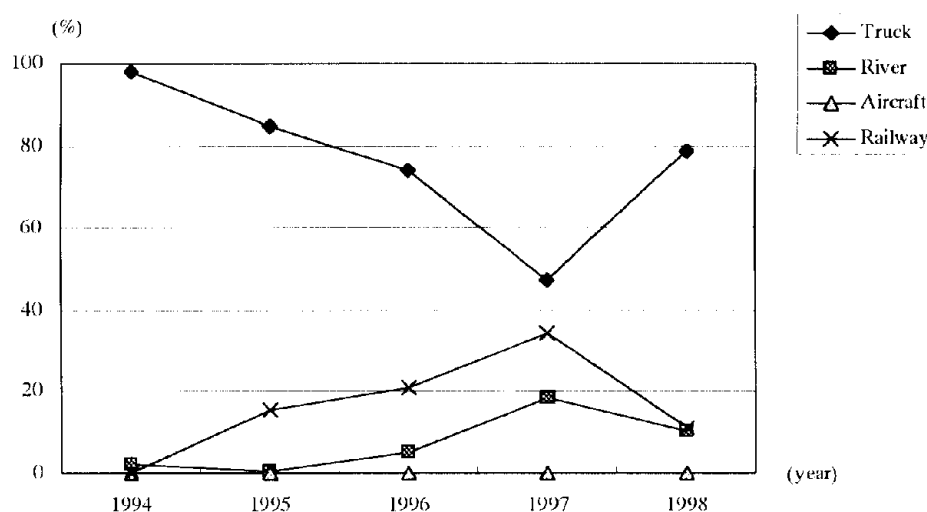
Source: OCIT

**Fertilizer:**

Import of fertilizers is increasing with the stepping up of soybean production. They are imported mainly from Brazil and Uruguay, generally by truck, but a significant volume is transported by railway to Encarnación in the department of Itapúa, which is a soybean-growing district, and distributed to other parts of the country.

**Figure 23 Physical Distribution of Fertilizer (1997)**

**Figure 24 Variations in Percentage of Fertilizer Import Modes**



Source: OCIT

**Table 21 Fertilizer Import – Origin and Modes**

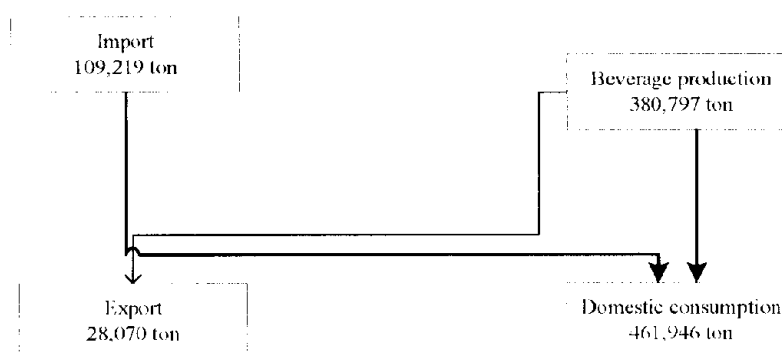
	Brazil	Argentina	Uruguay	Chile	Total
Truck	74,592	346	5,778	250	81,206
River	11,236	0	12,749	0	32,059
Aircraft	0	0	0	0	0
Railway	42,326	0	15,965	0	58,982
Total	128,155	346	34,491	250	172,248

Source: OCIT

## Beverage:

Regarding beverage, 110,000 tons is imported, 380,000 tons is produced, and domestic consumption is 460,000 tons. That is imported 33,000 tons from North America; 14,000 tons from Europe by river transport. Other side by road transport, that is imported 20,000 tons from Brazil, 25,000 tons from Argentina.

**Figure 25 Physical Distribution of Beverage (1997)**



**Table 22 Beverage Import – Origin and Modes**

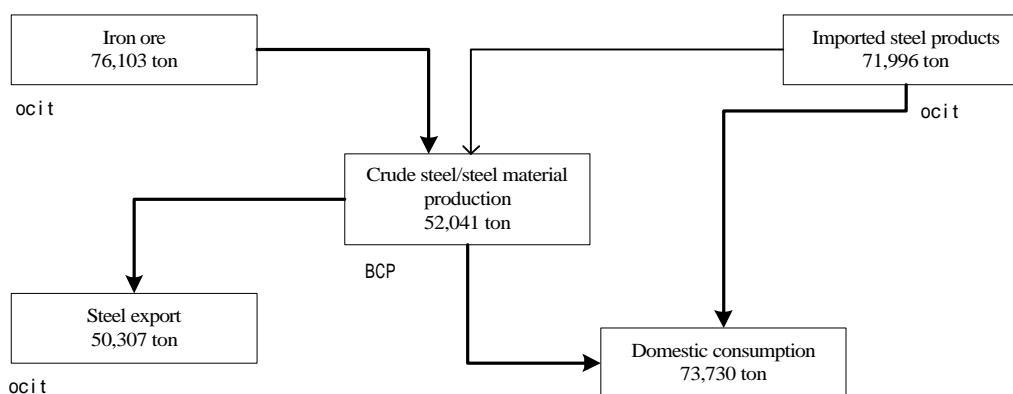
(unit: ton)

	Brazil	Argentina	Middle & South America	North America	Others	Total
Truck	20,412	24,975	86	1,246	8,011	54,730
River	0	0	824	31,473	21,833	54,130
Aircraft	56	0	0	235	67	358
Railway	0	0	0	0	0	0
Total	20,468	24,975	910	32,954	29,911	109,218

Source: OCIT

**Iron ore, steel products, etc.:**

Iron ore is imported by water transport to the steelworks in Villa Hayes. Steel products are exported to Brazil and Argentina by truck.

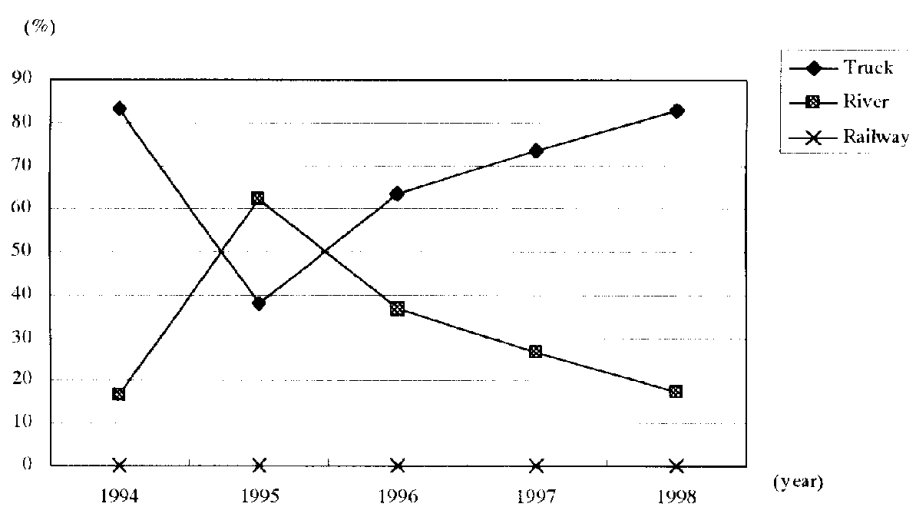
**Figure 26 Physical Distribution of Iron Ore, Steel Products, etc.****Table 23 Export of Steel Products – Destination and Modes**

(unit: ton)

	Brazil	Argentina	Uruguay	Chile	Bolivia	Total
Truck	15,187	16,974	2,923	3	1,814	36,900
River	1,000	6,507	5,900	0	0	13,407
Aircraft	0	0	0	0	0	0
Railway	0	0	0	0	0	0
Total	16,187	23,481	8,823	3	1,814	50,307

Source: OCIT

**Figure 27 Variations in Steel Products Export Modes**

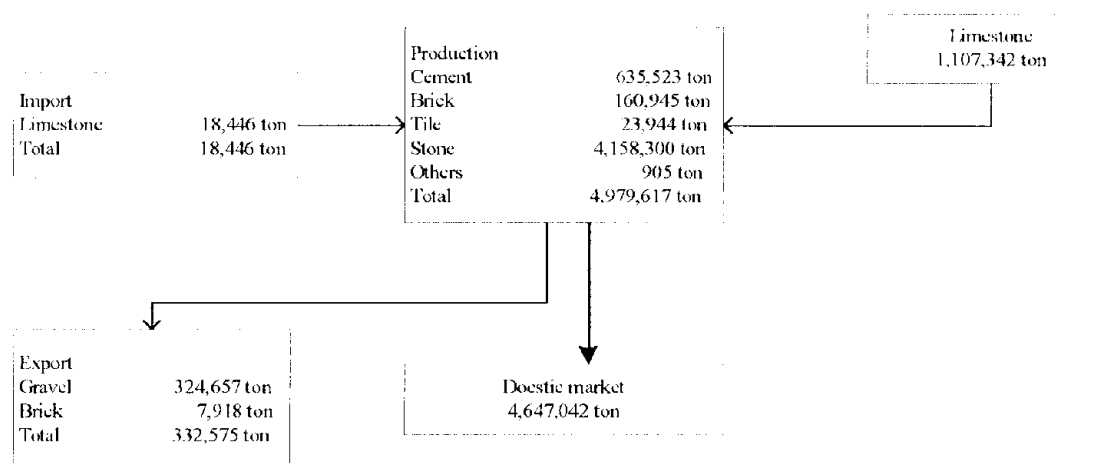


Source: OCIT

### Construction material:

Some gravel and brick are exported, but the volume of domestic consumption is overwhelmingly bigger.

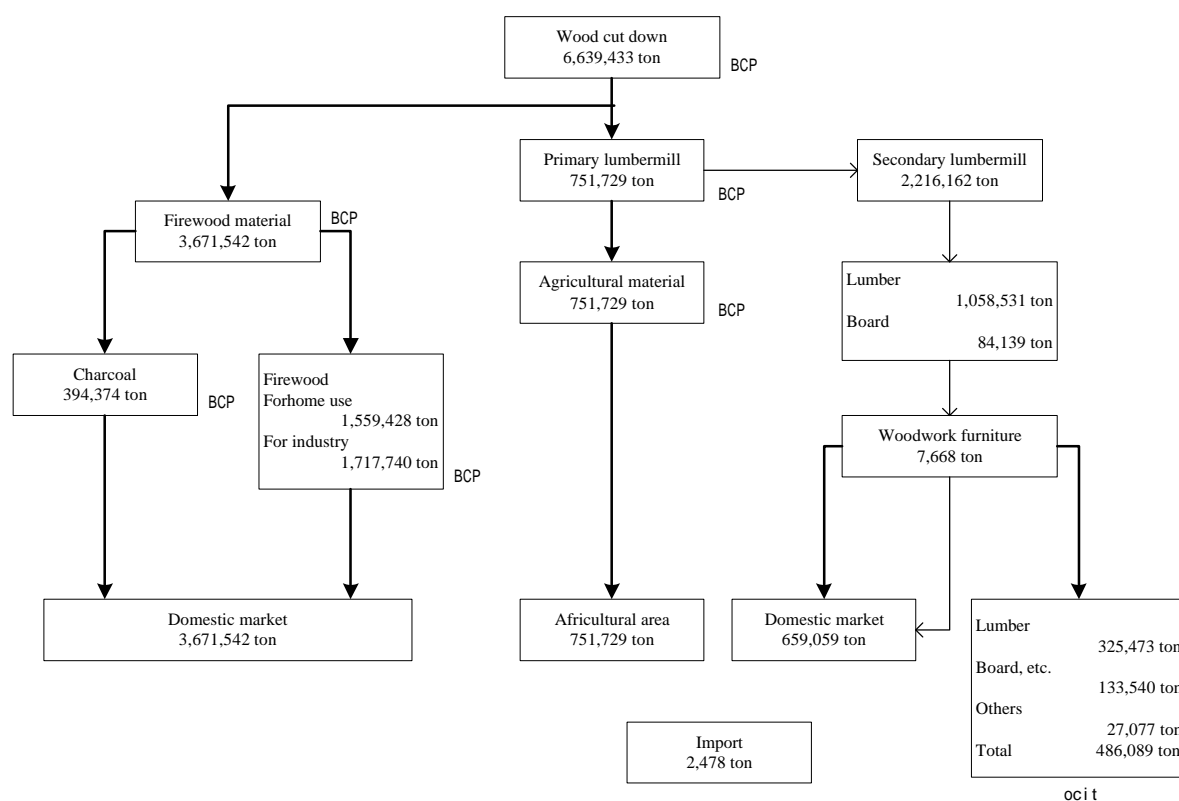
**Figure 28 Physical Distribution of Construction Material (1997)**



### Wood:

About 55% of the wood cut down is consumed in the country as firewood and charcoal, and 7% is exported as lumber and plywood. Logs are also used as agricultural material on farms. The main export destination is Brazil, and transport is mostly by truck. It's presumed that wood is transported by truck from Ciudad del Este to the port in Brazil, and then transported by boat from there.

**Figure 29 Physical Distribution of Wood (1997)**



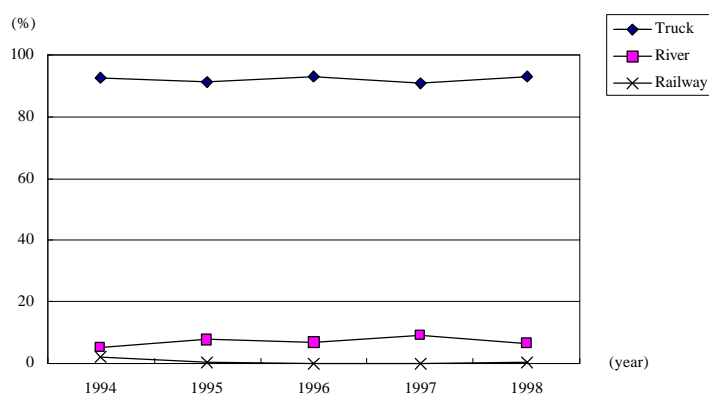
**Table 24 Wood Export – Destination and Modes**

(ton)

	Brazil	Argentina	Uruguay	Chile	Middle & South America	North America	Europe	Asia / Oceania	Total
Truck	280,353	100,391	13,492	2,122	0	23,083	4,838	16,721	441,058
River	0	273	63	0	572	6,503	12,088	25,255	44,781
Aircraft	0	0	0	1	0	7	0	3	11
Railway	0	25	59	0	90	0	27	10	211
Total	280,353	10,718	13,614	2,124	662	29,593	16,952	41,989	486,089

Source: OCIT

**Figure 30 Variations in Wood Export Modes**



Source: OCIT