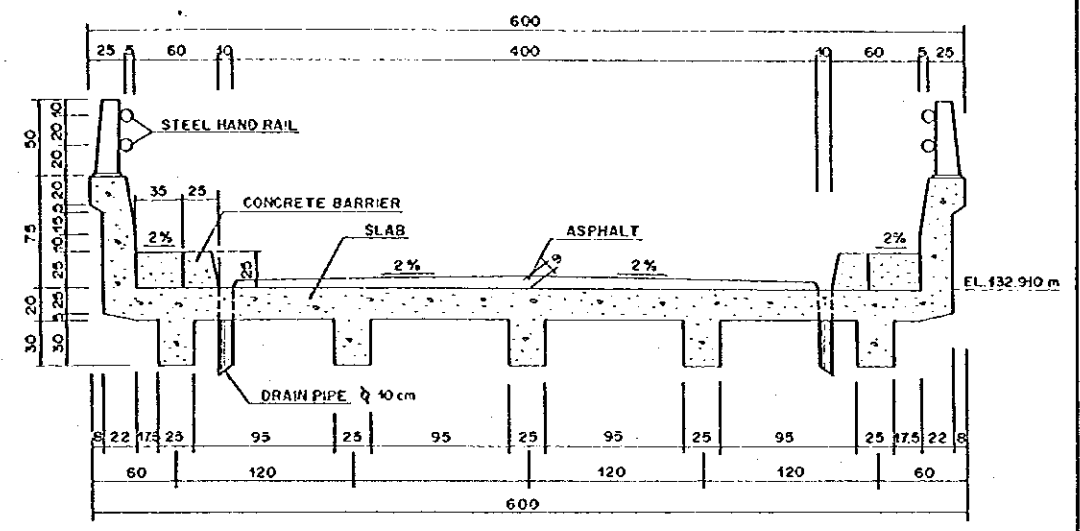
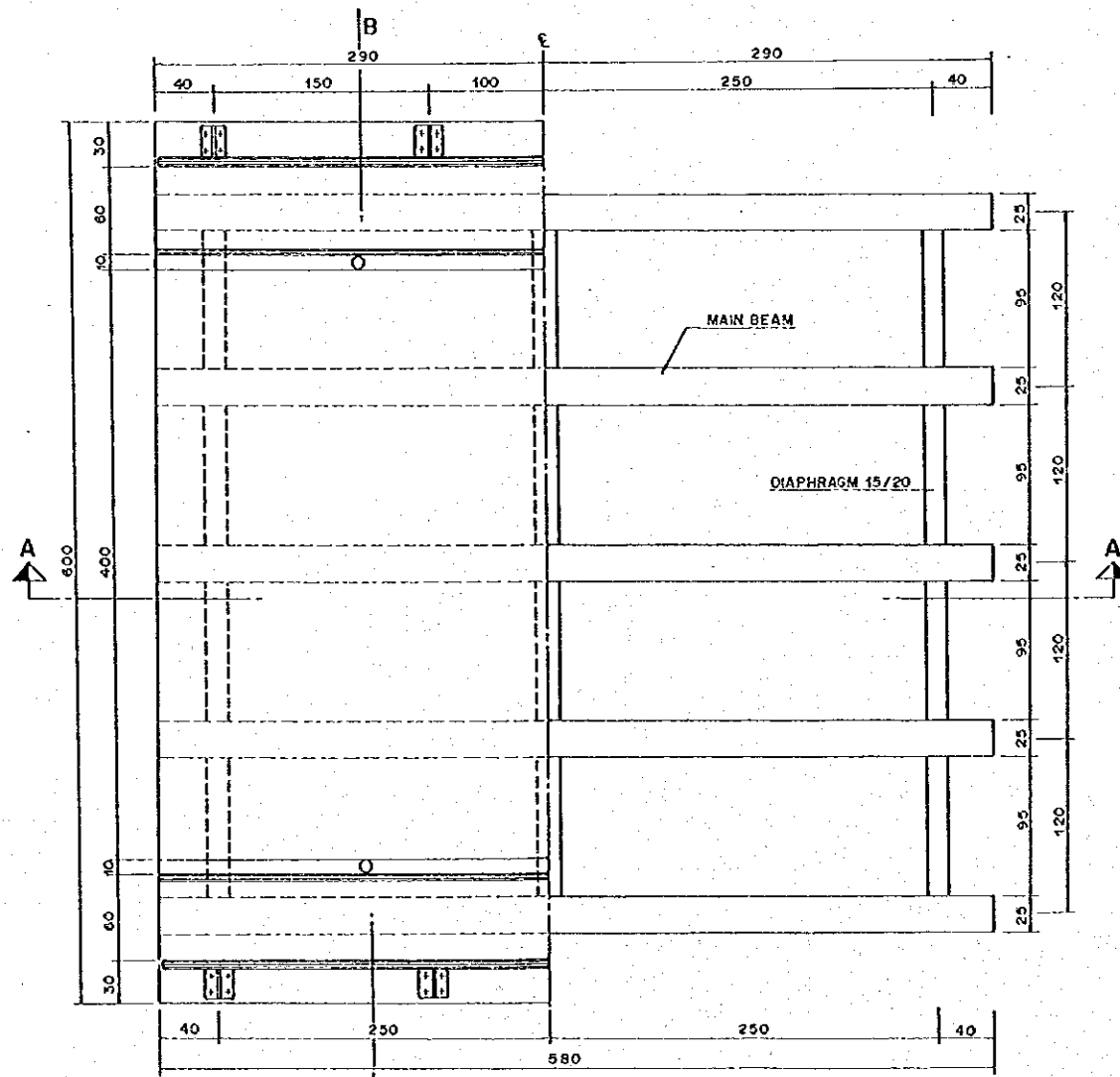


SECTION A-A  
SCALE A



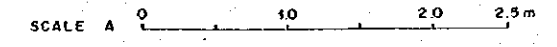
SECTION B-B  
SCALE A



PLAN  
SCALE A

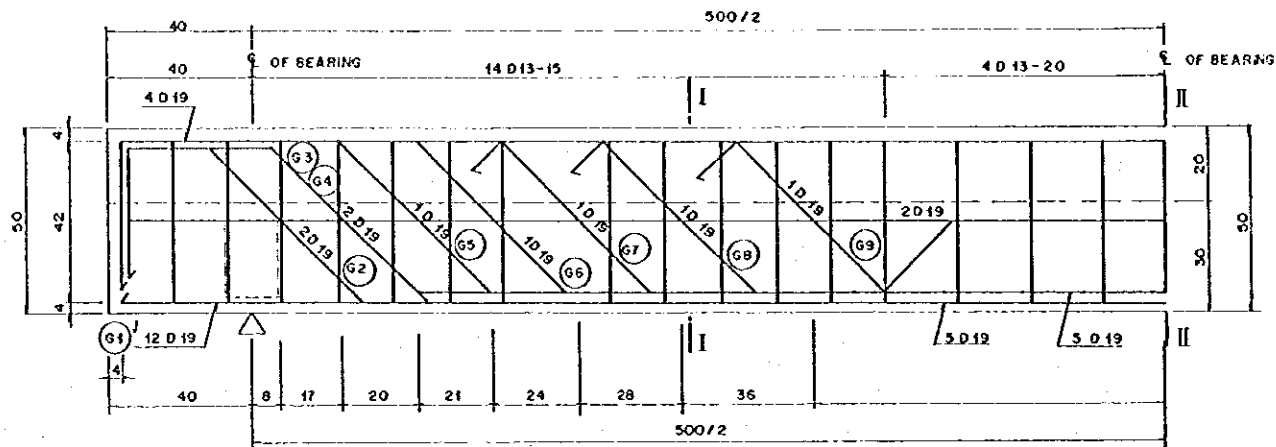
NOTES

1. UNIT IN CENTIMETER EXCEPT REINFORCING BAR AND BEARING SHOE
2. CONCRETE QUALITY (TYPE D)
3. STEEL QUALITY BJ - 32
4. CONCRETE COVER MINIMUM 20mm

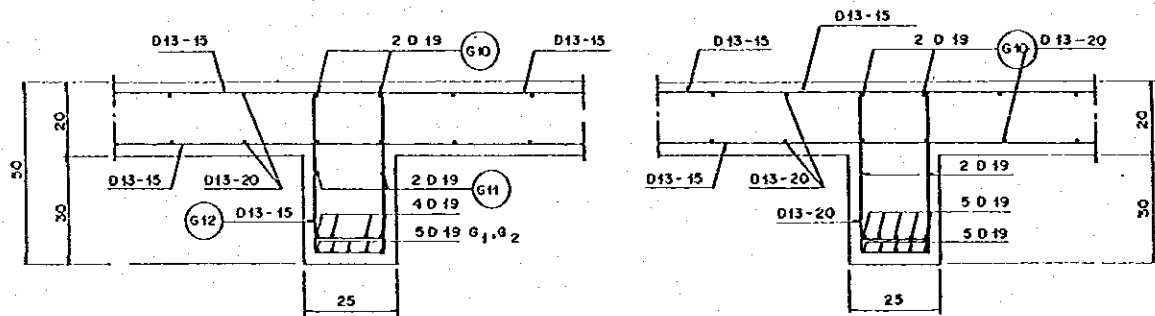


NO.		DATE	REVISIONS	ORIGINATED	DESIGNED	APPROVED	APPROVED

THE REPUBLIC OF INDONESIA MINISTRY OF PUBLIC WORKS DIRECTORATE GENERAL OF WATER RESOURCES DEVELOPMENT AND DIRECTORATE GENERAL OF HUMAN SETTLEMENT IRATURNELUNA FLOOD CONTROL PROJECT COMPONENT: JATIBARANG DAM CONSTRUCTION ACCESS ROAD SIWARAK BRIDGE UPPER STRUCTURE BEAM AND SLAB		PROVINCE CENTRAL JAVA PROJECT NAME FLOOD CONTROL, URBAN DRAINAGE AND WATER RESOURCES DEVELOPMENT IN SEMARANG IN THE REPUBLIC OF INDONESIA DISTRICT SEMARANG CITY DRAWING NO. JD-P1-AR-BF-3 SHEET NO. 278 DATE CONTRACT NO.
JAPAN INTERNATIONAL COOPERATION AGENCY CITI ENGINEERING CO., LTD. IN ASSOCIATION WITH PACIFIC CONSULTANTS INTERNATIONAL AND PARKO INTERNATIONAL INC.	DESIGNED CHECKED CELEST OF PLANNING AND DESIGN PROJECT MANAGER	DATE CONTRACT NO.

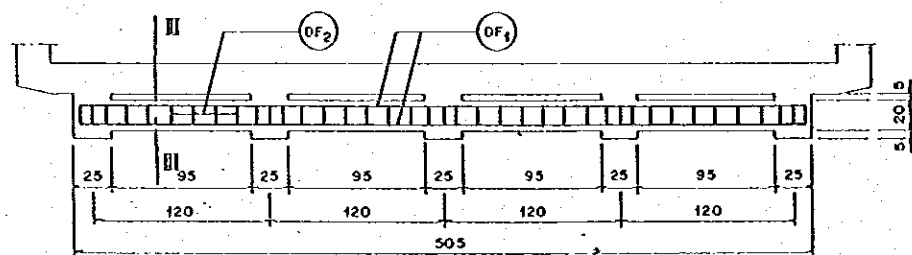


REINFORCING BAR ARRANGEMENT OF MAIN BEAM  
SCALE B

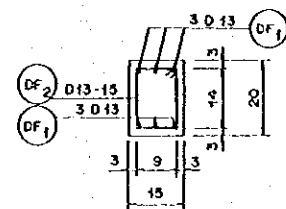


SECTION I - I  
SCALE B

SECTION II - II  
SCALE B



REINFORCING BAR OF DIAPHRAGM  
SCALE A



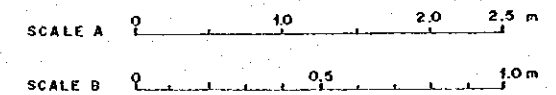
SECTION III - III  
SCALE B

LIST REINFORCING BAR OF GIRDER AND DIAPHRAGM

REINFORCING BAR NO.	Ø (mm)	TYPE	BENDING DIMENSION (CM)						TOTAL LENGTH (m)	UNIT WEIGHT (kg/m)	NUMBER	WEIGHT (kg)	REMARKS
			a	b	c	d	e	f					
G1	D19	A	572	—	—	—	—	—	5.72	2.23	2 x 5	128	
G2	D19	B	446	53.75	20	38	—	—	6.695	2.230	2 x 5	149	
G3	D19	B	412	53.75	37	38	—	—	6.695	2.230	1 x 5	75	
G4	D19	B	372	48.09	57	38	—	—	6.582	2.230	1 x 5	73	
G5	D19	B	330	53.75	78	38	—	—	6.695	2.230	1 x 5	75	
G6	D19	B	282	53.75	102	38	—	—	6.695	2.230	1 x 5	75	
G7	D19	C	226	53.75	20	—	—	—	3.735	2.230	1 x 5	42	
G8	D19	C	54	53.75	20	—	—	—	3.015	2.230	1 x 5	34	
G9	D19	D	20	53.75	30	—	—	—	1.0375	2.230	2 x 5	23	
G10	D19	E	572	38	—	—	—	—	6.480	2.230	2 x 5	45	
G11	D19	A	572	—	—	—	—	—	5.720	2.230	2 x 5	128	
G12	D13	F	19	42	5	—	—	—	1.320	1.040	37 x 5	254	
DF <sub>1</sub>	D13	A	495	—	—	—	—	—	4.95	1.04	6 x 3	93	
DF	Ø10	F	9	14	3	—	—	—	0.52	0.617	39 x 3	38	
TOTAL											13131		

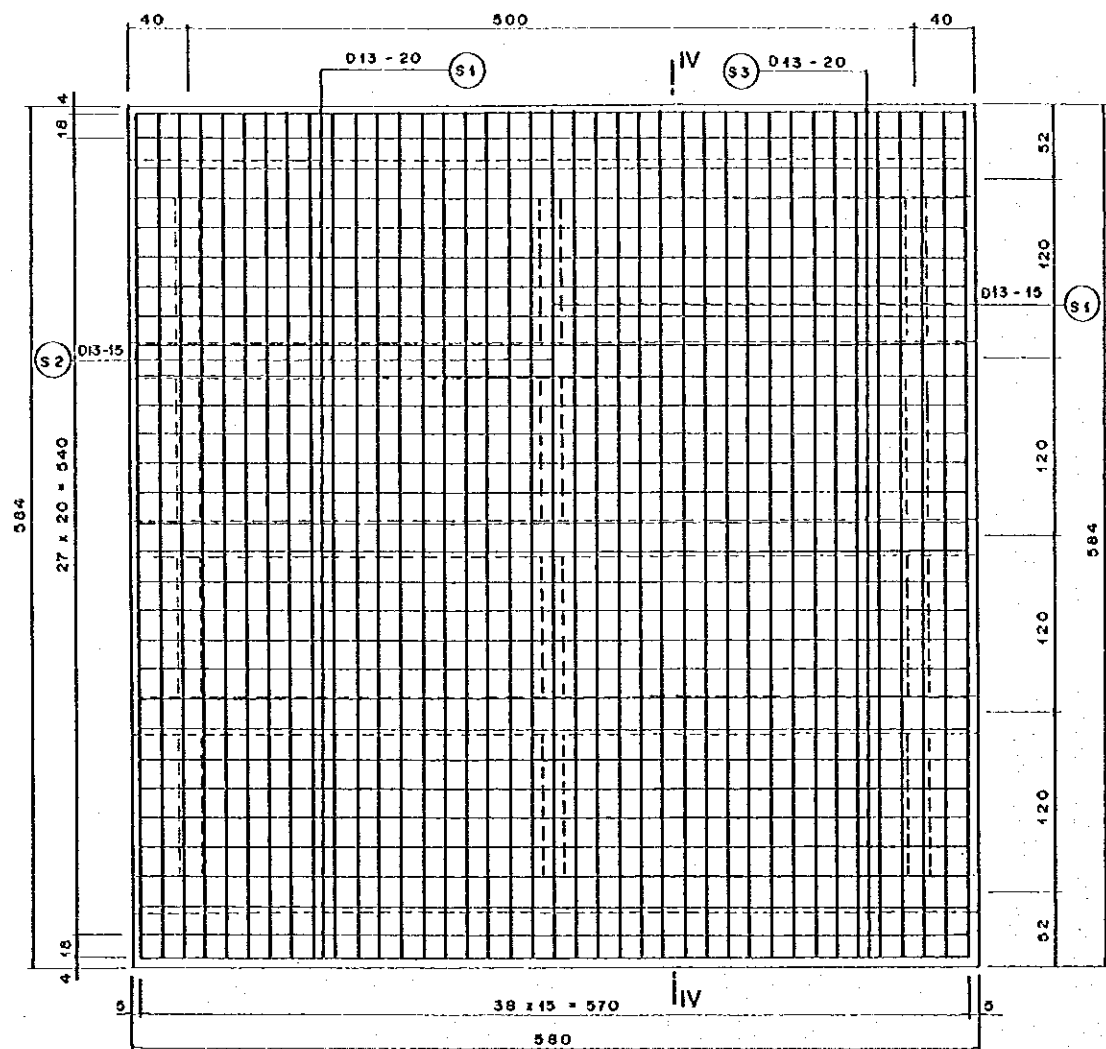
NOTES

1. UNIT IN CENTIMETER EXCEPT REINFORCING BAR AND BEARING SHOE
2. CONCRETE QUALITY (TYPE D)
3. STEEL QUALITY BJ-32
4. CONCRETE COVER MINIMUM 20 mm



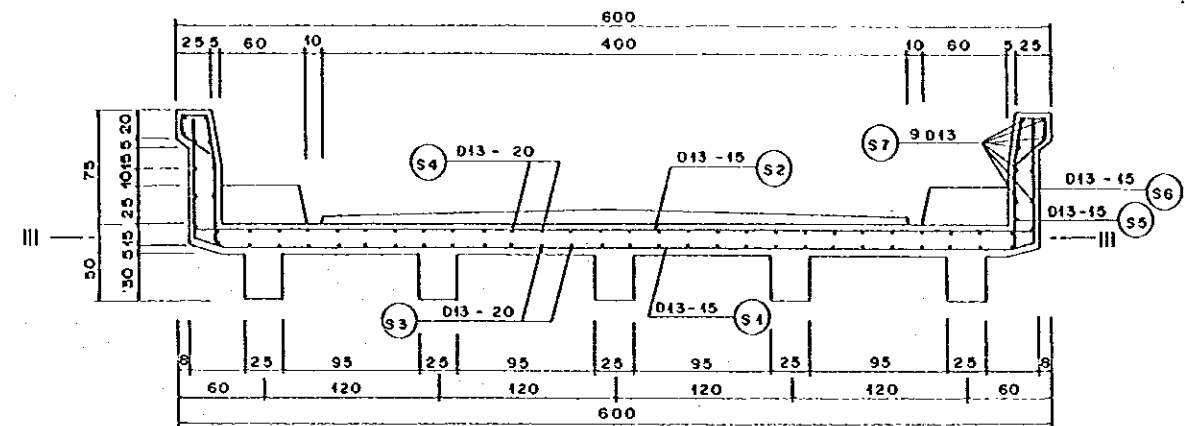
NO.	DATE	REVISIONS	PREPARED	DESIGNED	APPROVED

THE REPUBLIC OF INDONESIA MINISTRY OF PUBLIC WORKS DIRECTORATE GENERAL OF WATER RESOURCES DEVELOPMENT AND DIRECTORATE GENERAL OF HUMAN SETTLEMENT PRATUNSELUNA FLOOD CONTROL PROJECT COMPONENT: JATIBARANG DAM CONSTRUCTION ACCESS ROAD <b>SIWARAK BRIDGE</b> REINFORCING BAR OF BEAM AND DIAPHRAGM		PROVINCE CENTRAL JAVA PROJECT NAME FLOOD CONTROL, URBAN DRAINAGE AND WATER RESOURCES DEVELOPMENT OF SOREBAJO IN THE REPUBLIC OF INDONESIA CONTACT SEMARANG CITY DRAWING NO. JD-PI-AR-Br-4 SHEET NO. 279 DATE CONTRACT NO.
JAPAN INTERNATIONAL COOPERATION AGENCY CII ENGINEERING CO., LTD. IN ASSOCIATION WITH PACIFIC CONSULTANTS INTERNATIONAL AND YAMCO INTERNATIONAL INC.	DESIGNED CHECKED APPROVED CHIEF OF PLANNING AND DESIGN PROJECT MANAGER	[Signature]



SECTION III - III  
SCALE . A

REINFORCING BAR OF SLAB



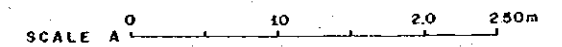
SECTION IV - IV  
SCALE . A

LIST OF REINFORCING BAR OF SLAB

NO	Ø (mm)	TYPE	BENDING DIMENSION (Cm)							TOTAL LENGTH (m)	UNIT WEIGHT (kg/m)	NUMBER	WEIGHT	REMARK
			a	b	c	d	e	f	g					
S1	D13	A	540	19						5,78	1.04	39	234	
S2	D13	B	576							5,76	1.04	39	234	
S3	D13	B	570							5,70	1.04	30	178	
S4	D13	B	570							5,70	1.04	30	178	
S5	D13	C	50	38	19	14	25			1,46	1.04	39	59	
S6	D13	D	84	19	20					1,23	1.04	39	50	
S7	D13	B	570							5,70	1.04	18	107	
<b>TOTAL</b>												<b>1040 Kg</b>		

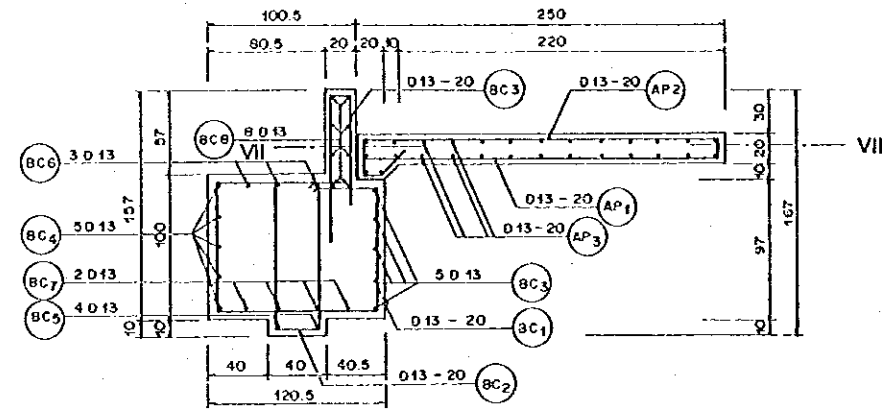
NOTES

1. UNIT IN CENTIMETER EXCEPT REINFORCING BAR
2. CONCRETE QUALITY (TYPE D)
3. STEEL QUALITY BJ - 32
4. CONCRETE COVER MINIMUM 20mm

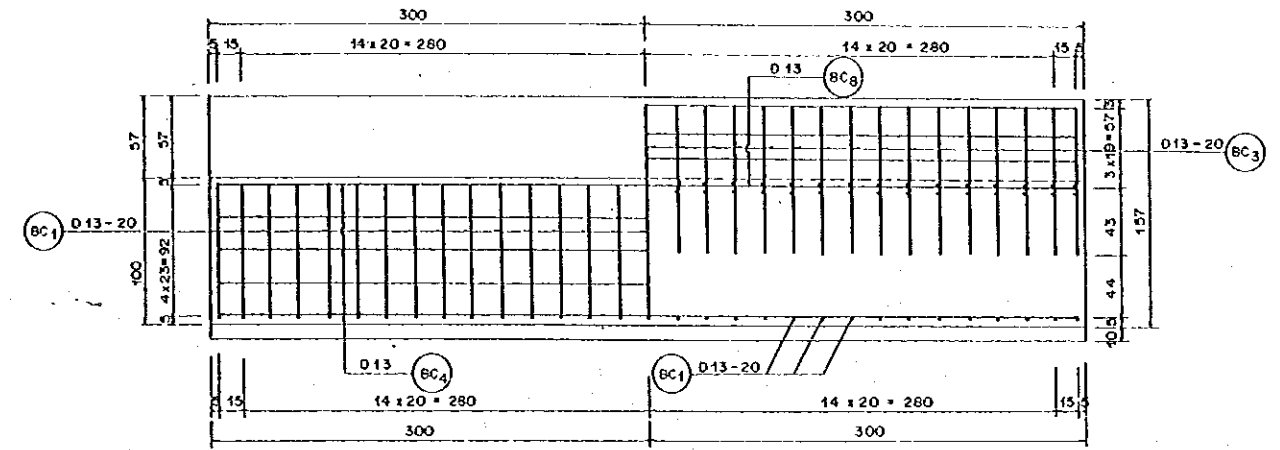


NO.	DATE	REVISIONS	QUOTATION	DESIGNED	APPROVED

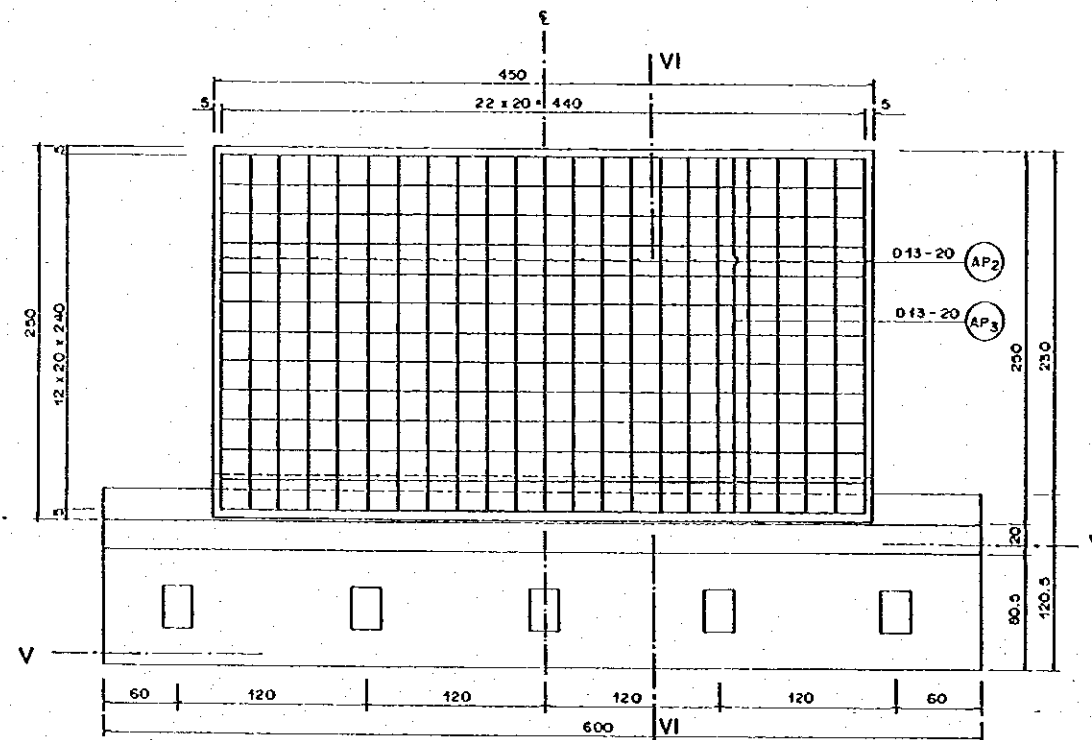
THE REPUBLIC OF INDONESIA MINISTRY OF PUBLIC WORKS DIRECTORATE GENERAL OF WATER RESOURCES DEVELOPMENT AND DIRECTORATE GENERAL OF HUMAN SETTLEMENT PRATUNSELINA FLOOD CONTROL PROJECT COMPONENT: JATIBARANG DAM CONSTRUCTION ACCESS ROAD <b>SIWARAK BRIDGE</b> REINFORCING BAR OF SLAB		PROVINCE CENTRAL JAVA PROJECT NAME FLOOD CONTROL, URBAN DRAINAGE AND WATER RESOURCES DEVELOPMENT IN SEMARANG BY THE REPUBLIC OF INDONESIA DISTRICT SEMARANG CITY DRAWING NO. JO - PI - AR - B1 - 5 SHEET NO. 280
JAPAN INTERNATIONAL COOPERATION AGENCY JICA ENGINEERING CO., LTD. IN ASSOCIATION WITH PACIFIC CONSULTANTS INTERNATIONAL AND PARCO INTERNATIONAL INC.	DESIGNED CHECKED APPROVED PROJECT MANAGER	DATE CONTRACT NO.



SECTION VI - VI  
SCALE A



SECTION V - V  
SCALE A



SECTION VII - VII  
SCALE A

LIST OF REINFORCING BAR OF BASE CONCRETE AND APPROACH SLAB

NO	Ø (mm)	TYPE	BENDING DIMENSION (Cm)						TOTAL LENGTH (m)	UNIT WEIGHT (kg/m)	NUMBER	WEIGHT	REMARK
			a	b	c	d	e	f					
BC1	Ø13	A	112	92	90	89	40	4.23	1.04	31X2	272		
BC2	Ø13	B	102	32	5			1.44	1.04	31X2	92		
BC3	Ø13	C	100	14	74			1.88	1.04	31X2	122		
BC4	Ø13	D	590					5.90	1.04	5X2	62		
BC5	Ø13	E	590	90				7.70	1.04	4X2	64		
BC6	Ø13	D	590					5.90	1.04	3X2	36		
BC7	Ø13	D	590					5.90	1.04	2X2	24		
BC8	Ø13	D	590					5.90	1.04	8X2	98		
AP1	Ø13	D	240					2.40	1.04	23X2	114		
AP2	Ø13	F	240	22	12	25		2.99	1.04	23X2	144		
AP3	Ø13	E	440	22				4.84	1.04	28X2	282		
<b>TOTAL 41310 Kg</b>													

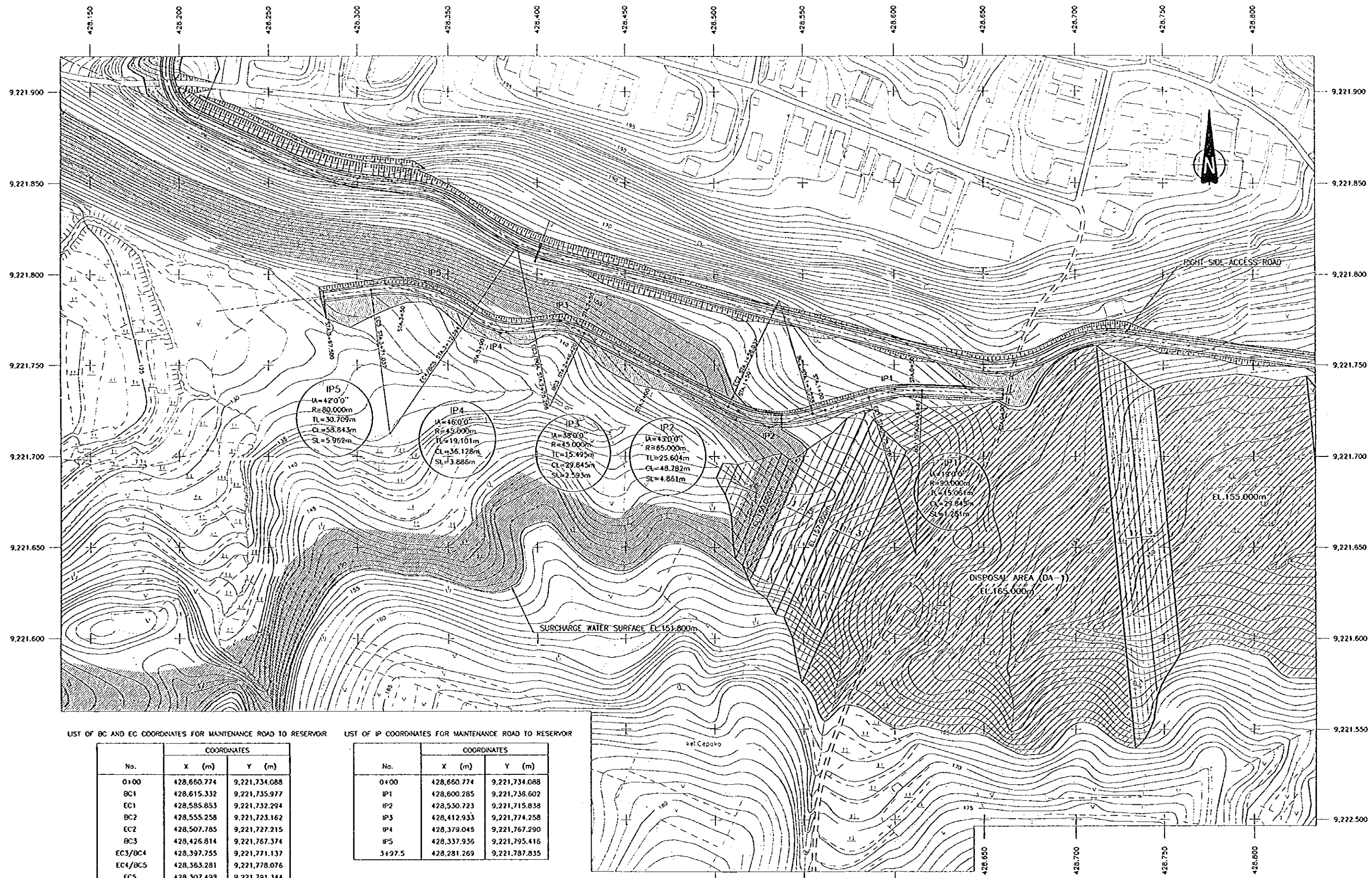
NOTES

1. UNIT IN CENTIMETER EXCEPT REINFORCING BAR AND BEARING SHOE
2. CONCRETE QUALITY (TYPE D)
3. STEEL QUALITY BJ - 32
4. CONCRETE COVER MINIMUM 20 mm

SCALE A 0 10 20 250 m

NO	DATE	REVISIONS	ORIGINATED	DESIGNED	APPROVED	APPROVED

THE REPUBLIC OF INDONESIA MINISTRY OF PUBLIC WORKS DIRECTORATE GENERAL OF WATER RESOURCES DEVELOPMENT AND DIRECTORATE GENERAL OF HUMAN SETTLEMENT		PROVINCE CENTRAL JAVA
PRATUNSELUNA FLOOD CONTROL PROJECT COMPONENT : JATIBARANG DAM CONSTRUCTION ACCESS ROAD SIWARAK BRIDGE REINFORCING BAR OF BASE CONCRETE & APPROACH SLAB		PROJECT NAME FLOOD CONTROL, USAK (URUGAN) AND WATA (WADUKAN) DEVELOPMENT IN SEMARANG IN THE REPUBLIC OF INDONESIA DISTRICT SEMARANG CITY
JAPAN INTERNATIONAL COOPERATION AGENCY CIVIL ENGINEERING CO., LTD. FACILITY DEVELOPMENT INTERNATIONAL DIV. JIMBO INTERNATIONAL INC.		DRAWING NO. JD-P1-AR-8r-G SHEET NO. 281
DESIGNED CHECKED CHIEF OF PLANNING AND DESIGN	DATE	CONTRACT NO.



LIST OF BC AND EC COORDINATES FOR MAINTENANCE ROAD TO RESERVOIR

No.	COORDINATES	
	X (m)	Y (m)
0+00	428,660.774	9,221,734.088
BC1	428,615.332	9,221,735.977
EC1	428,585.853	9,221,732.294
BC2	428,555.258	9,221,723.162
EC2	428,507.785	9,221,727.215
BC3	428,426.814	9,221,767.374
EC3/BC4	428,397.755	9,221,771.137
EC4/BC5	428,363.281	9,221,778.076
EC5	428,307.498	9,221,791.344
3+97.5	428,281.269	9,221,787.835

LIST OF IP COORDINATES FOR MAINTENANCE ROAD TO RESERVOIR

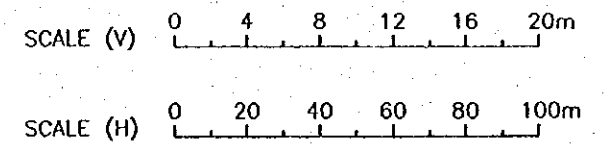
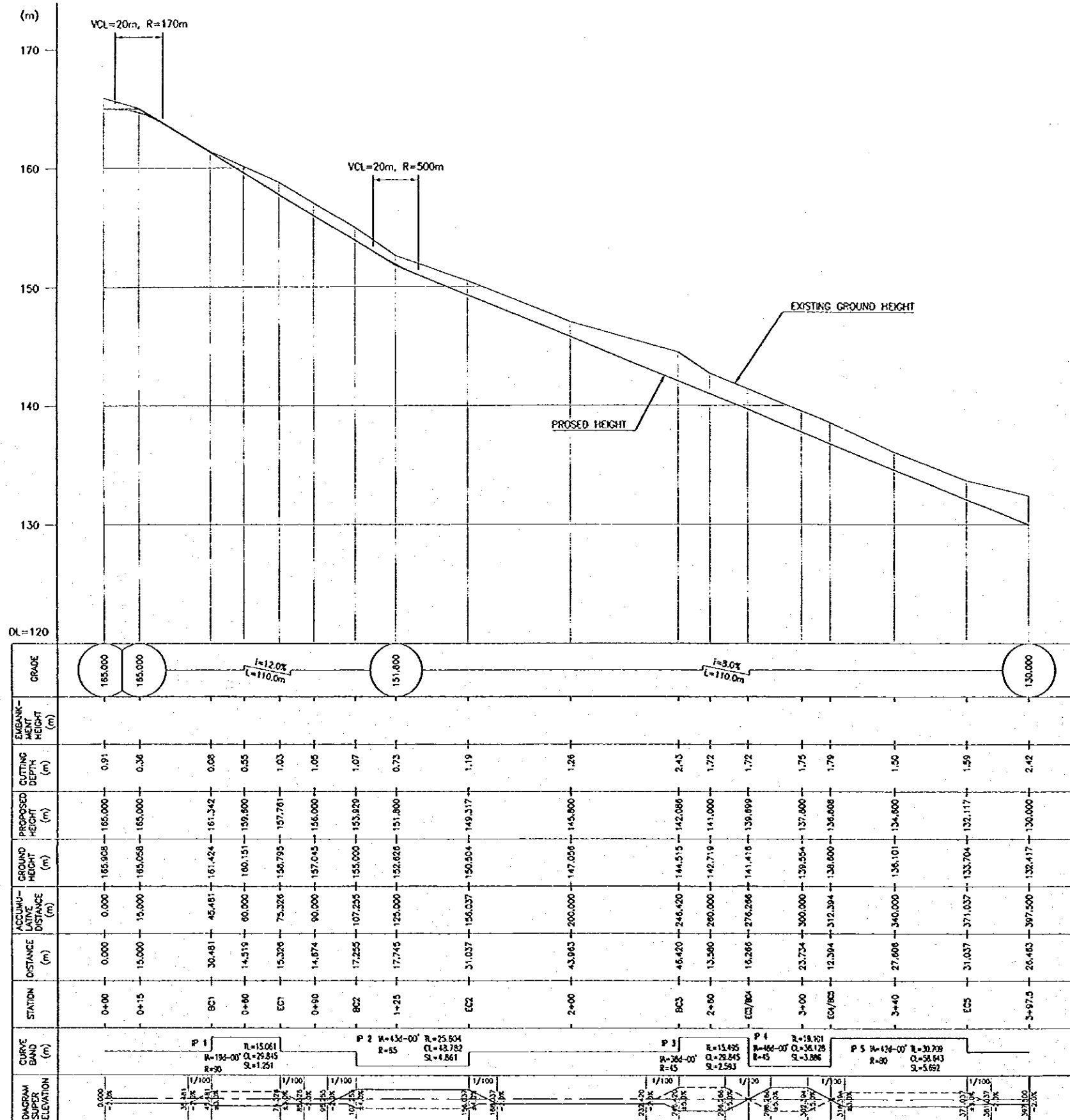
No.	COORDINATES	
	X (m)	Y (m)
0+00	428,660.774	9,221,734.088
IP1	428,600.285	9,221,736.602
IP2	428,530.723	9,221,715.838
IP3	428,412.933	9,221,774.258
IP4	428,379.045	9,221,767.290
IP5	428,337.936	9,221,795.416
3+97.5	428,281.269	9,221,787.835

REFERENCE DRAWINGS

- JD-P1-AR-Mr-2 MAINTENANCE ROAD TO RESERVOIR - PROFILE
- JD-P1-AR-Mr-3 MAINTENANCE ROAD TO RESERVOIR - TYPICAL CROSS SECTION

NO.	DATE	REVISIONS	ORIGINATED	DESIGNED	APPROVED

<p>THE REPUBLIC OF INDONESIA          MINISTRY OF PUBLIC WORKS          DIRECTORATE GENERAL OF WATER RESOURCES DEVELOPMENT          AND DIRECTORATE GENERAL OF HUMAN SETTLEMENT</p>	<p>PROVINCE CENTRAL JAVA</p>	
	<p>PROJECT NAME FLOOD CONTROL, URBAN DRAINAGE AND WATER RESOURCES DEVELOPMENT IN SEMARANG CITY</p>	
	<p>COMPONENT : JATIBARANG DAM CONSTRUCTION OTHERS MAINTENANCE ROAD TO RESERVOIR PLAN</p>	
	<p>DESIGNED CHECKED</p>	<p>DATE CONTRACT NO.</p>
<p>INSPAN INTERNATIONAL COOPERATION AGENCY          CII ENGINEERING CO., LTD. IN AMSTERDAM NED          PACIFIC CONSULTANTS INTERNATIONAL          PASOINTERNATIONAL INC.</p>		
<p>APPROVED CHIEF OF PLANNING AND DESIGN PROJECT MANAGER</p>		



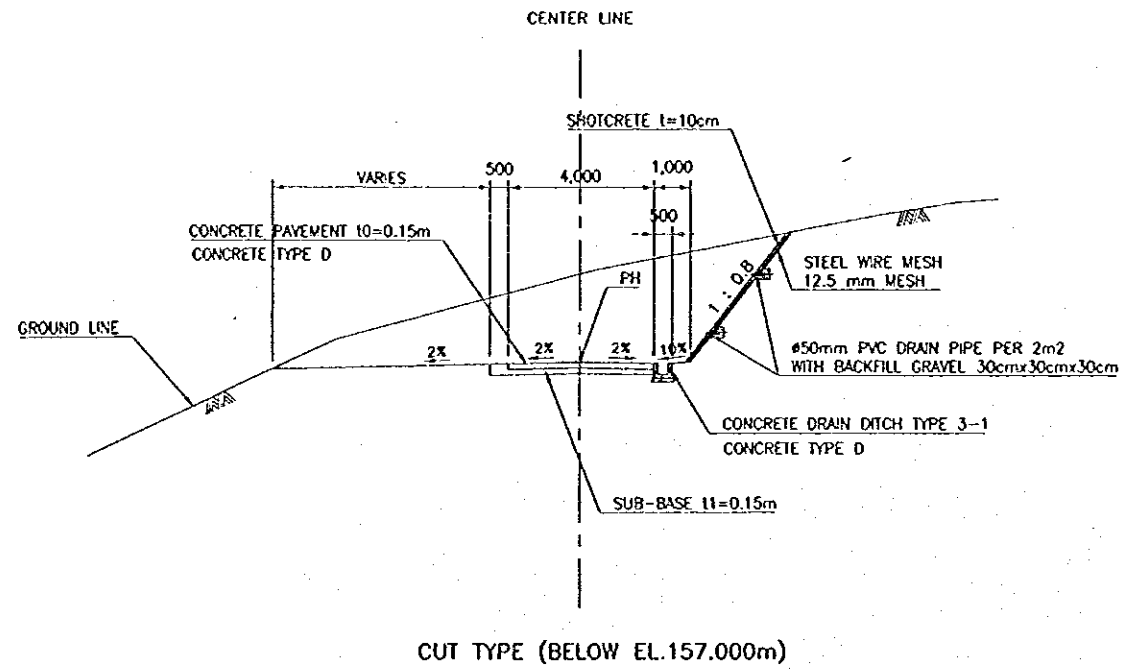
REFERENCE DRAWINGS

- JD-P1-AR-Mr-1 MAINTENANCE ROAD TO RESERVOIR - PLAN
- JD-P1-AR-Mr-3 MAINTENANCE ROAD TO RESERVOIR - TYPICAL CROSS SECTION

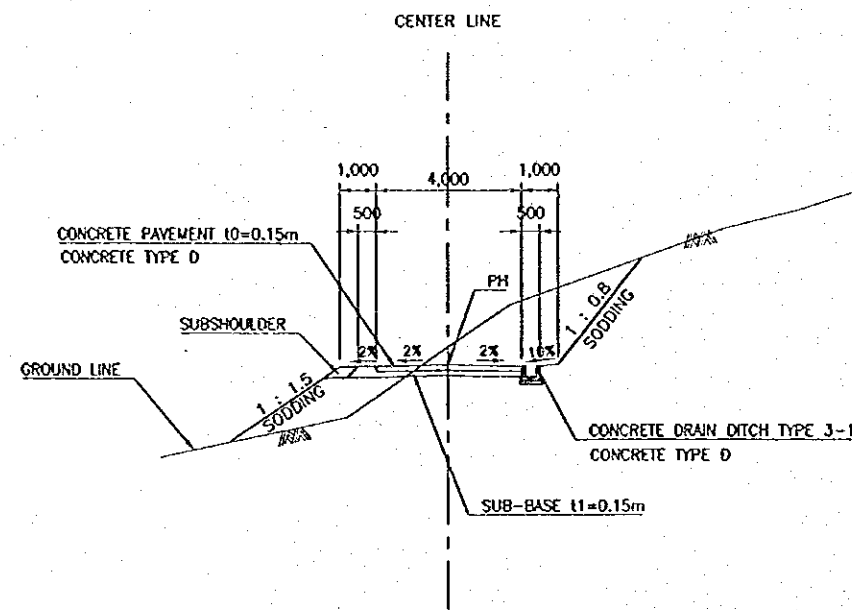
NO.	DATE	REVISIONS	DESIGNED	CHECKED	APPROVED

THE REPUBLIC OF INDONESIA MINISTRY OF PUBLIC WORKS DIRECTORATE GENERAL OF WATER RESOURCES DEVELOPMENT AND DIRECTORATE GENERAL OF HUMAN SETTLEMENT		PROVIDER CENTRAL JAVA
PRATUNSELUNA FLOOD CONTROL PROJECT COMPONENT: JATIBARANG DAM CONSTRUCTION OTHERS MAINTENANCE ROAD TO RESERVOIR PROFILE		PROJECT NAME FLOOD CONTROL, DRAIN DRAINAGE AND WATER RESOURCES DEVELOPMENT IN SEMARANG IN THE REPUBLIC OF INDONESIA DISTRICT SEMARANG CITY
LIPAT INTERNATIONAL COOPERATION AGENCY CIL (INDONESIA) CO., LTD. IN ASSOCIATION WITH FACILITY CONSULTANTS INTERNATIONAL FACCO INTERNATIONAL INC.		DRAWING NO. JD-P1-01-Mr-2 SHEET NO. 283 DATE CONTRACT NO.
DESIGNED CHECKED APPROVED PROJECT MANAGER	[Signature] [Signature]	[Signature]





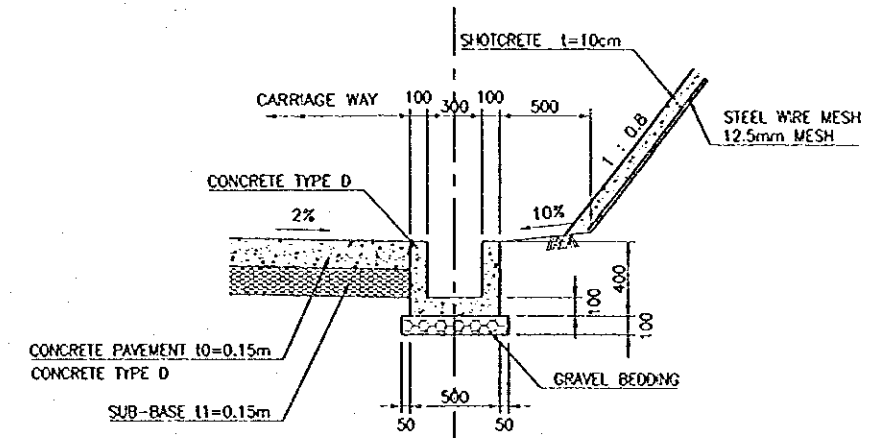
CUT TYPE (BELOW EL.157.000m)



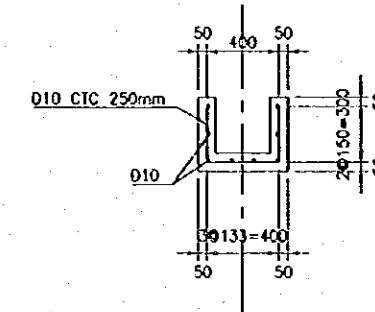
CUT AND EMBANKMENT (ABOVE EL.157.000m)

TYPICAL CROSS SECTION

SCALE A



TYPICAL CROSS SECTION



REINFORCEMENT DETAILS

CONCRETE DRAIN DITCH TYPE 3-1

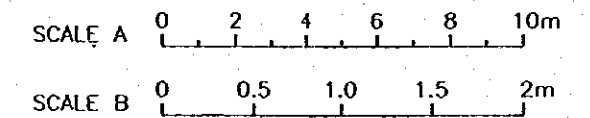
SCALE B

NOTES

1. ALL DIMENSIONS ARE IN MILLIMETERS, UNLESS OTHERWISE NOTED.
2. SUBSHOULDER SHALL BE MADE OF SAME MATERIAL WITH SUBGRADE.
3. WELDED WIRE MESH SHALL BE PROVIDED IN CONCRETE PAVEMENT.
4. JOINT FILLER, JOINT SEALANT AND SLIP BAR (Ø25mm) SHALL BE PROVIDED AT JOINT OF CONCRETE PAVEMENT.

REFERENCE DRAWINGS

- JD-P1-0T-Mr-1 MAINTENANCE ROAD TO RESERVOIR - PLAN
- JD-P1-0T-Mr-2 MAINTENANCE ROAD TO RESERVOIR - PROFILE

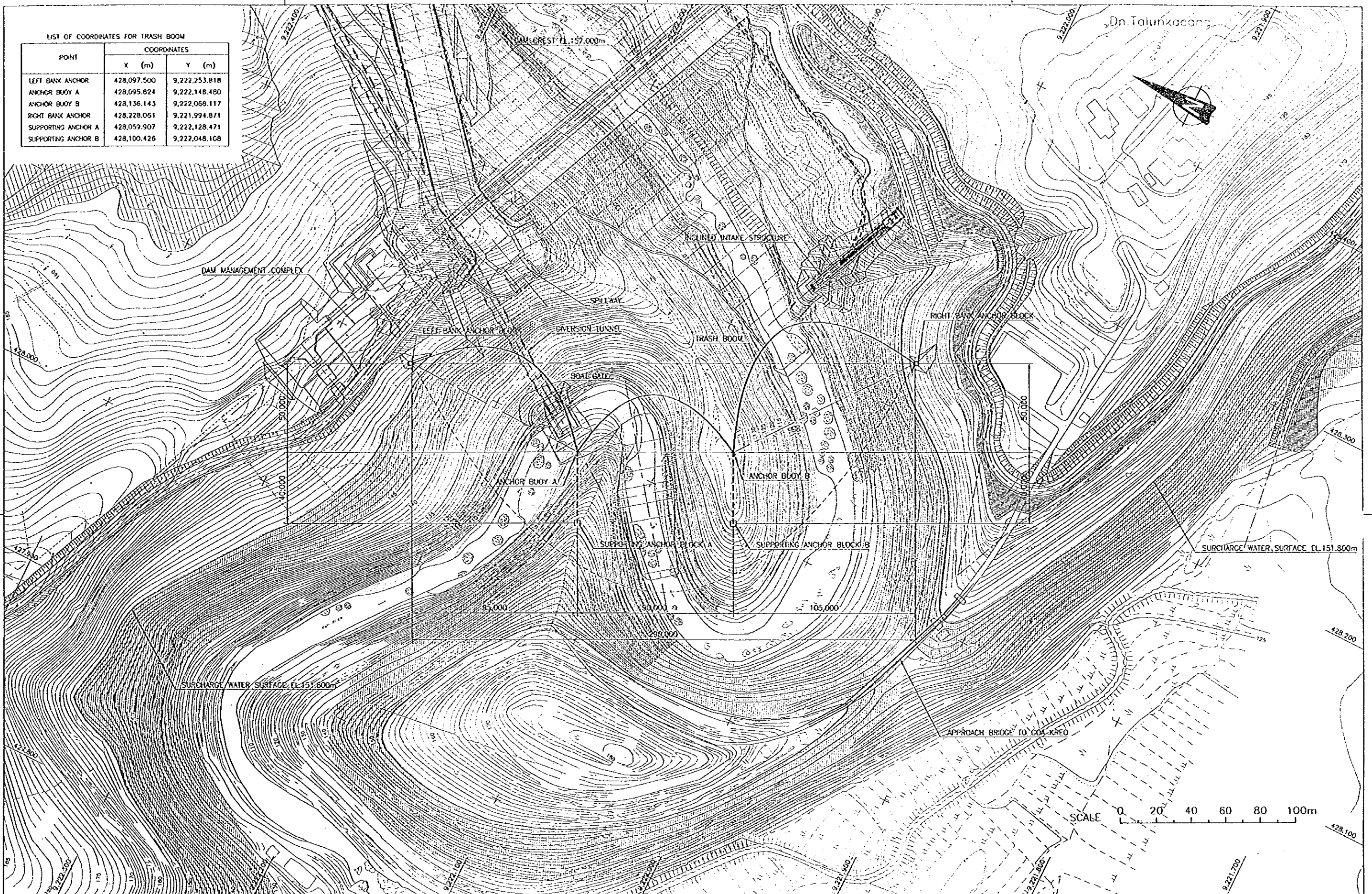


NO.	DATE	REVISIONS	ORIGINATED	DESIGNED	APPROVED

THE REPUBLIC OF INDONESIA MINISTRY OF PUBLIC WORKS DIRECTORATE GENERAL OF WATER RESOURCES DEVELOPMENT AND DIRECTORATE GENERAL OF HUMAN SETTLEMENT		PROVINCE CENTRAL JAVA
IRATUNSELLUNA FLOOD CONTROL PROJECT COMPONENT: IATIBARANG DAM CONSTRUCTION OTHERS MAINTENANCE ROAD TO RESERVOIR TYPICAL CROSS SECTION		PROJECT NAME FLOOD CONTROL, URBAN DRAINAGE AND WATER RESOURCES DEVELOPMENT IN SEMARANG, IN THE REPUBLIC OF INDONESIA
EAPN INTERNATIONAL COOPERATION AGENCY CTE ENGINEERING CO., LTD. IN ASSOCIATION WITH PACIFIC CONSULTANTS INTERNATIONAL PABO PONDOKJEMARU, INC.		DISTRICT SEMARANG CITY
DESIGNED CHECKED APPROVED CHIEF OF PLANNING AND DESIGN PROJECT MANAGER		DRAWING NO. JD-P1-0T-Mr-3 SHEET NO. 284 DATE CONTRACT NO.

LIST OF COORDINATES FOR TRASH BOOM

POINT	COORDINATES	
	X (m)	Y (m)
LEFT BANK ANCHOR	428,097.500	9,222,253.818
ANCHOR BUOY A	428,095.624	9,222,146.480
ANCHOR BUOY B	428,136.143	9,222,066.117
RIGHT BANK ANCHOR	428,228.061	9,221,994.871
SUPPORTING ANCHOR A	428,059.907	9,222,128.471
SUPPORTING ANCHOR B	428,100.426	9,222,048.108



NOTES

1. ALL DIMENSIONS ARE IN MILLIMETERS, UNLESS OTHERWISE NOTED.

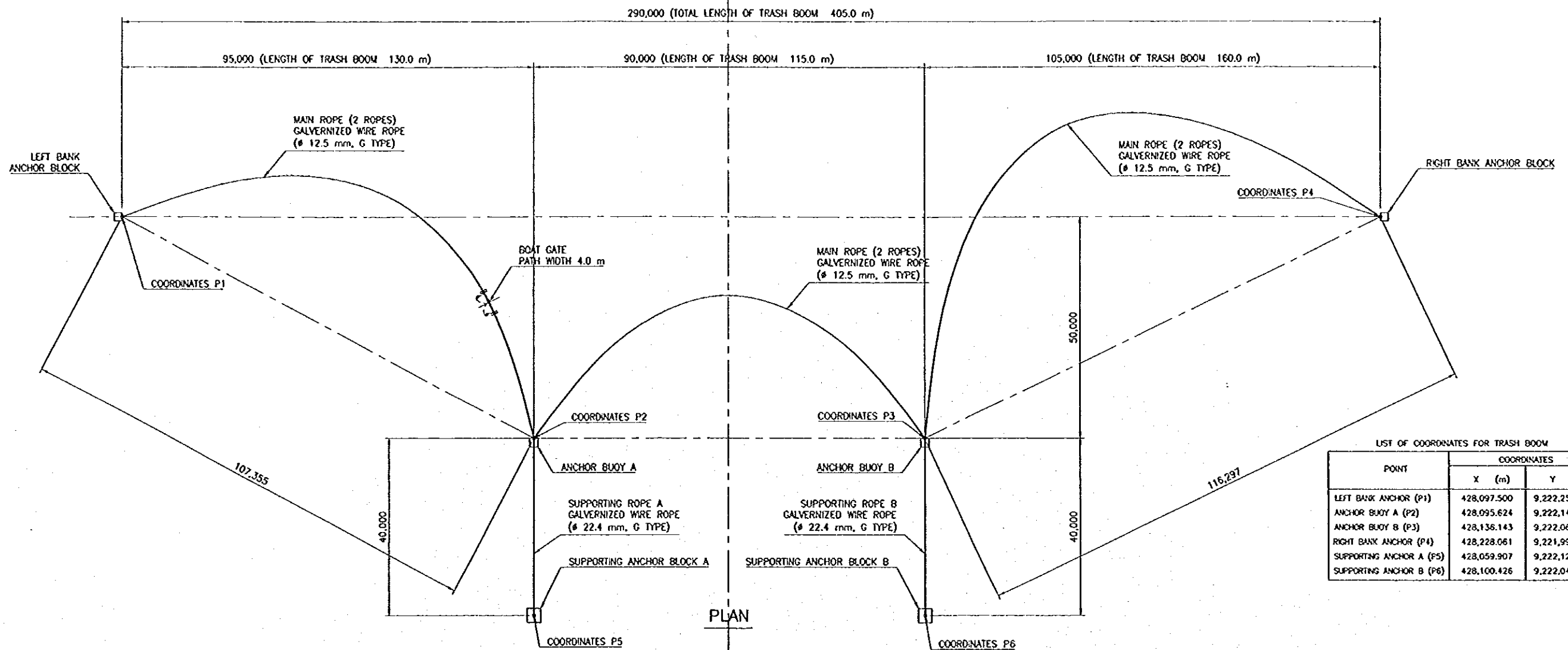
REFERENCE DRAWINGS

- JD-P1-0T-Tr-2 PLAN AND PROFILE OF TRASH BOOM
- JD-P1-0T-Tr-3 DETAILS OF TRASH BOOM

NO	DATE	REVISIONS	ORIGINATED	DESIGNED	APPROVED

<p>THE REPUBLIC OF INDONESIA          MINISTRY OF PUBLIC WORKS          DIRECTORATE GENERAL OF WATER RESOURCES DEVELOPMENT          AND DIRECTORATE GENERAL OF HUMAN SETTLEMENT</p> <p>JRA TUNSELUNA FLOOD CONTROL PROJECT          COMPONENT : JATIBARANG DAM CONSTRUCTION</p> <p>OTHERS          GENERAL PLAN OF TRASH BOOM</p> <p>SIJAN INTERNATIONAL COOPERATION AGENCY          C/O INDOCONSULTING CO., LTD. IN ASSOCIATION WITH          PACIFIC CONSULTANTS INTERNATIONAL          PARTNERSHIP (PT. PARI)</p>	<p>PROJ. NO. CENTRAL JAWA</p>
	<p>PROJECT NAME          FLOOD CONTROL, URBAN DRAINAGE AND          WATER RESOURCES DEVELOPMENT IN          SEMARANG IN THE REPUBLIC OF INDONESIA</p>
	<p>DISTRICT          SEMARANG CITY</p>
	<p>DRAWING NO. JD-P1-0T-Tr-1          SHEET NO. 285</p>
<p>DESIGNED          CHECKED          DATE</p>	<p>CONTRACT NO.</p>
<p>CHIEF OF PLANNING AND DESIGN          PROJECT MANAGER</p>	<p>APPROVED</p>

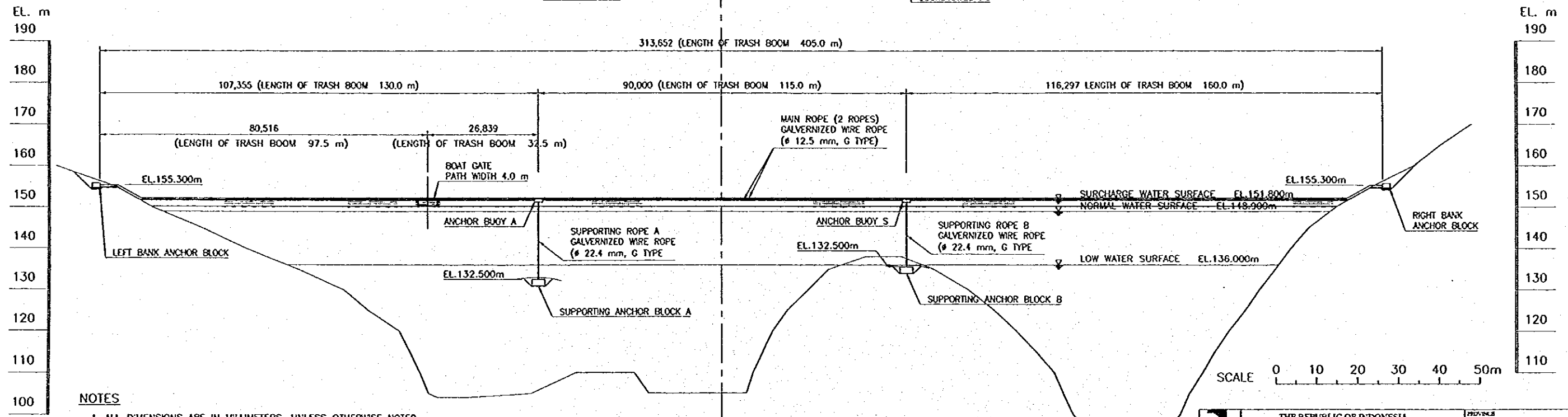




LIST OF COORDINATES FOR TRASH BOOM

POINT	COORDINATES	
	X (m)	Y (m)
LEFT BANK ANCHOR (P1)	428,097.500	9,222,253.818
ANCHOR BUOY A (P2)	428,095.624	9,222,146.480
ANCHOR BUOY B (P3)	428,136.143	9,222,066.117
RIGHT BANK ANCHOR (P4)	428,228.061	9,221,994.871
SUPPORTING ANCHOR A (P5)	428,059.907	9,222,128.471
SUPPORTING ANCHOR B (P6)	428,100.426	9,222,048.108

PLAN



LONGITUDINAL PROFILE

NOTES

1. ALL DIMENSIONS ARE IN MILLIMETERS, UNLESS OTHERWISE NOTED.
2. THE TYPES OF TRASH BOOM, BOAT GATE AND ANCHOR BUOY ARE TENTATIVE, WHICH SHALL BE DETERMINED BY THE CONTRACTOR WITH APPROVAL OF THE ENGINEER.
3. ANCHOR BUOY SHALL FUNCTION AS FLOATING PIER AND BE PROVIDED WITH 2.5 tf (APPROX. 25 kN) OF BUOYANT FORCE SO AS TO WITHSTAND VERTICAL FORCE FROM SUPPORTING ROPE. THE SUPPORTING ROPE SHALL BE CONNECTED WITH THE ANCHOR BUOY AT THE CENTER OF ITS BUOYANT FORCE.

REFERENCE DRAWINGS

- JD-P1-0T-Tr-1 GENERAL PLAN OF TRASH BOOM
- JD-P1-0T-Tr-3 DETAILS OF TRASH BOOM

NO.	DATE	REVISIONS	ORIGINATED	DESIGNED	APPROVED

THE REPUBLIC OF INDONESIA  
 MINISTRY OF PUBLIC WORKS  
 DIRECTORATE GENERAL OF WATER RESOURCES DEVELOPMENT  
 AND DIRECTORATE GENERAL OF HUMAN SETTLEMENT

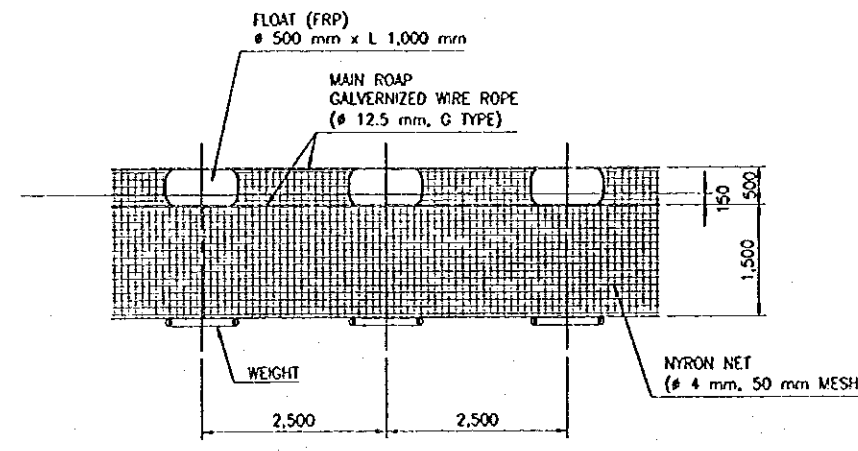
PRATUNJUNTA FLOOD CONTROL PROJECT  
 COMPONENT: JATIBARANG DAM CONSTRUCTION  
 OTHERS  
 PLAN AND PROFILE OF TRASH BOOM

PROVINCE: CENTRAL JAVA  
 PROJECT NAME: FLOOD CONTROL, URBAN DRAINAGE AND WATER RESOURCES DEVELOPMENT IN SEMARANG, IN THE REPUBLIC OF INDONESIA  
 DISTRICT: SEMARANG CITY  
 DRAWING NO. JD-P1-010-Tr-2  
 SHEET NO. 236

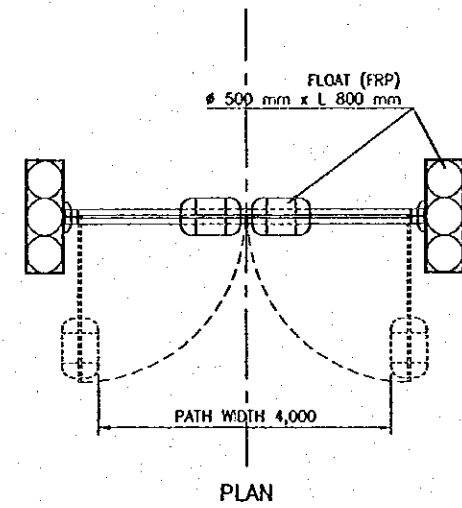
JAPAN INTERNATIONAL COOPERATION AGENCY  
 (JICA) ENGINEERING DIVISION, LTD. IN ASSOCIATION WITH  
 PACIFIC CONSULTANTS INTERNATIONAL  
 (PACIC) INTERNATIONAL INC.

DESIGNED: [Signature]  
 CHECKED: [Signature]  
 DATE: [ ]

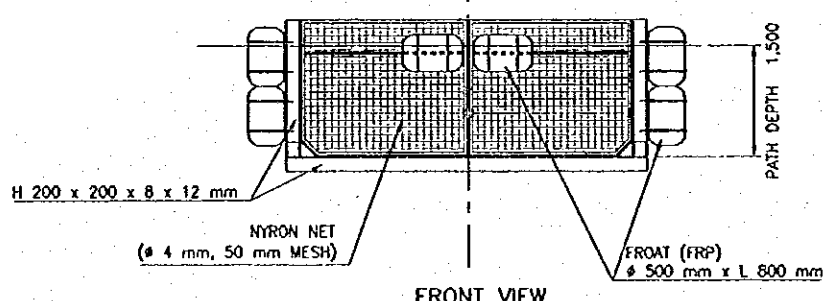
APPROVED: [Signature]  
 CHIEF OF PLANNING AND DESIGN  
 PROJECT MANAGER



DETAIL OF TRASH BOOM



PLAN



FRONT VIEW

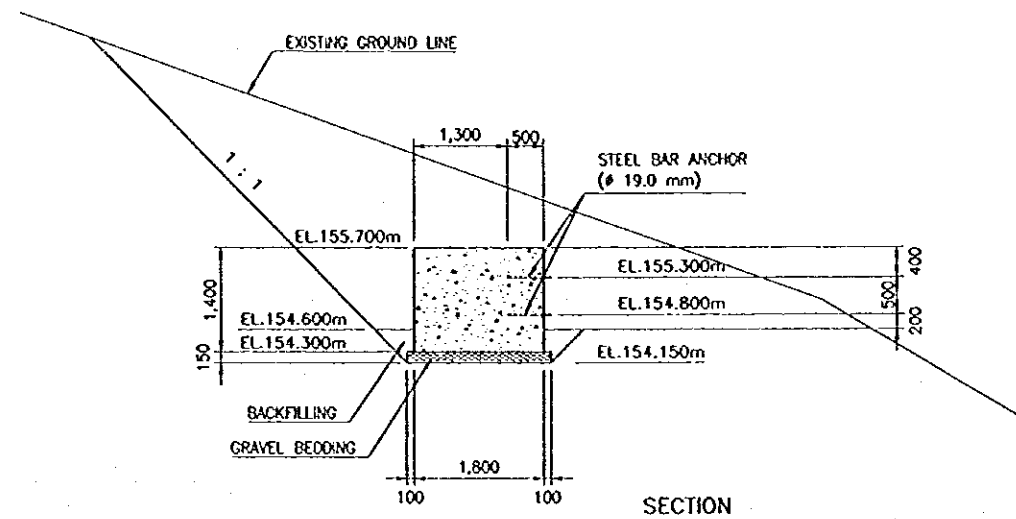
DETAIL OF BOAT GATE

NOTES

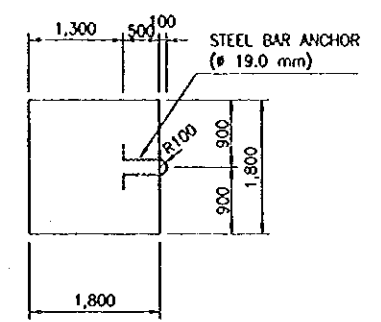
1. ALL DIMENSIONS ARE IN MILLIMETERS, UNLESS OTHERWISE NOTED.
2. THE TYPES OF TRASH BOOM, BOAT GATE AND ANCHOR BUOY ARE TENTATIVE, WHICH SHALL BE DETERMINED BY THE CONTRACTOR WITH APPROVAL OF THE ENGINEER.
3. ANCHOR BLOCK CONCRETE SHALL BE OF TYPE D AS PER SPECIFICATION.

REFERENCE DRAWINGS

- JD-P1-01-Tr-1 GENERAL PLAN OF TRASH BOOM
- JD-P1-01-Tr-2 PLAN AND PROFILE OF TRASH BOOM

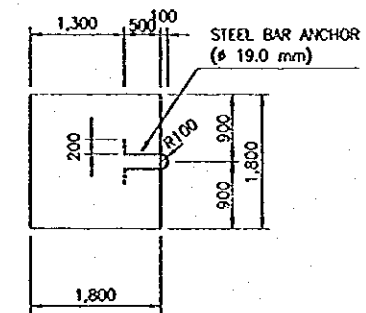


SECTION

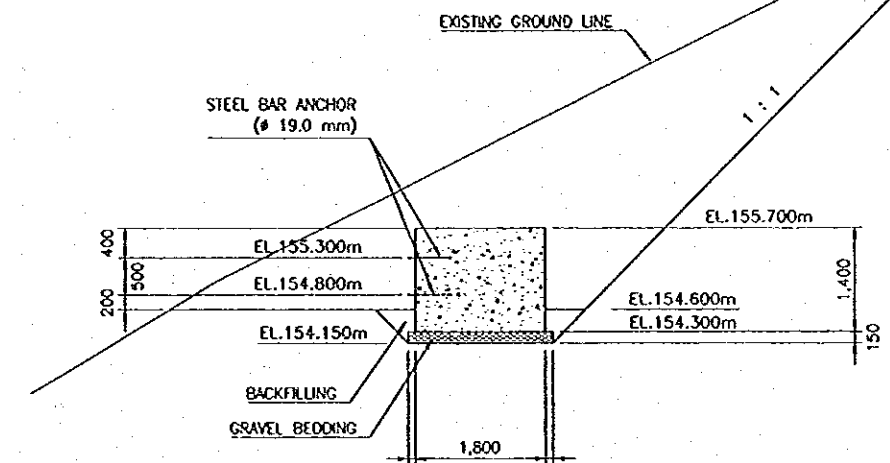


PLAN

DETAIL OF LEFT BANK ANCHOR BLOCK

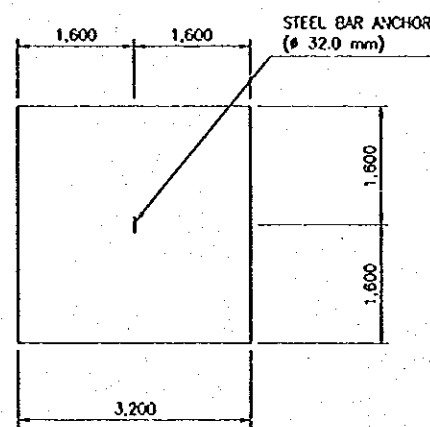


PLAN

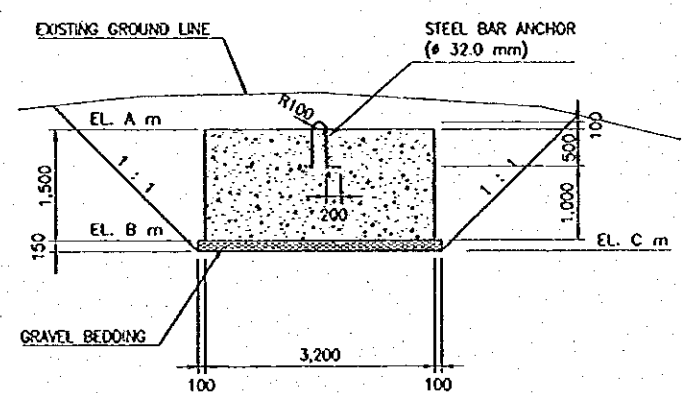


SECTION

DETAIL OF RIGHT BANK ANCHOR BLOCK



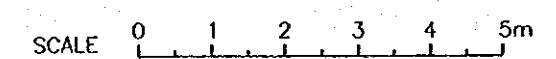
PLAN



SECTION

DETAIL OF SUPPORTING ANCHOR BLOCK

	SUPPORTING ANCHOR BLOCK A	SUPPORTING ANCHOR BLOCK B
EL. A m	EL.132.500 m	EL.135.500 m
EL. B m	EL.131.000 m	EL.134.000 m
EL. C m	EL.130.850 m	EL.133.850 m



NO.	DATE	REVISIONS	ORIGINATED	DESIGNED	APPROVED

THE REPUBLIC OF INDONESIA  
 MINISTRY OF PUBLIC WORKS  
 DIRECTORATE GENERAL OF WATER RESOURCES DEVELOPMENT  
 AND DIRECTORATE GENERAL OF HUMAN SETTLEMENT

PRATUNJUNTA FLOOD CONTROL PROJECT  
 COMPONENT : JATUBARANG DAM CONSTRUCTION

OTHERS  
 DETAILS OF TRASH BOOM

DIPAN INTERNATIONAL COOPERATION AGENCY  
 CITI ENGINEERING CO., LTD. IN ASSOCIATION WITH  
 PACIFIC CONSULTANTS INTERNATIONAL  
 PACO INTERNATIONAL INC.

DESIGNED: [Signature]  
 CHECKED: [Signature]  
 CHIEF OF PLANNING AND DESIGN  
 PROJECT MANAGER

PROVINCE: CENTRAL JAVA  
 PROJECT NAME: FLOOD CONTROL, URBAN DRAINAGE AND WATER RESOURCES DEVELOPMENT IN SEMARANG IN THE REPUBLIC OF INDONESIA  
 DISTRICT: SEMARANG CITY  
 DRAWING NO. JD-P1-01-Tr-3  
 SHEET NO. 287  
 DATE: [Blank]  
 CONTRACT NO. [Blank]



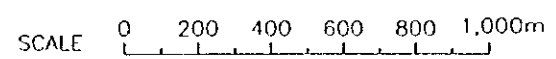
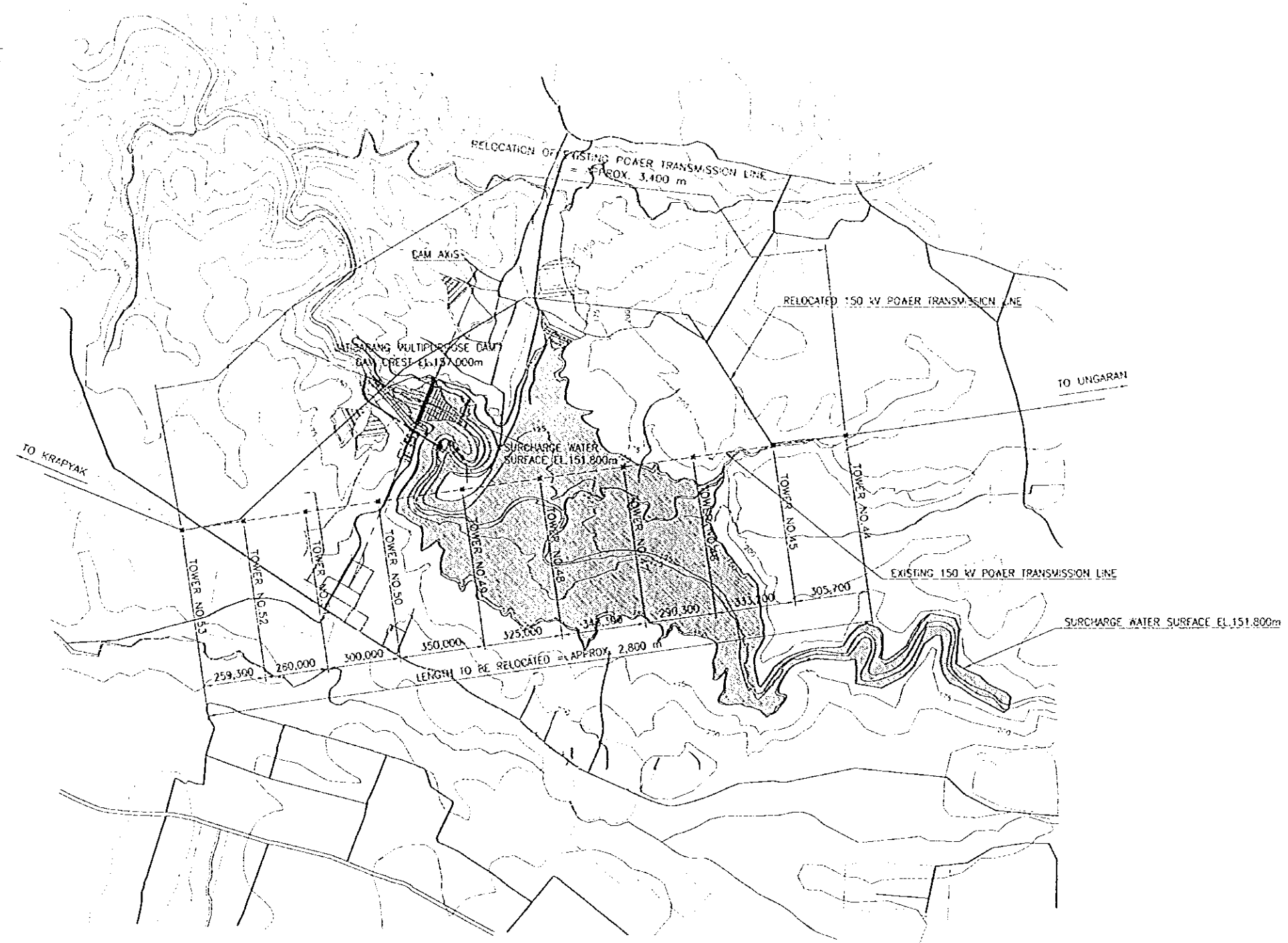
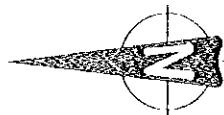
RELOCATION OF POWER TRANSMISSION LINE

NOTE

THE CONTRACTOR IS REQUIRED TO DESIGN, CONSTRUCT, TEST AND COMMISSION A RELOCATION OF THE POWER TRANSMISSION LINE AND THE BURIED FIBRE OPTIC CABLE IN ACCORDANCE WITH THE SPECIFICATION, THE DIRECTIONS OF THE ENGINEER ALL IN COMPLETE ACCORDANCE WITH THE REQUIREMENTS OF PERUSAHAAN LISTRIK NEGARA (PLN), THE STATE ELECTRICITY COMPANY OF INDONESIA, WHO SHALL OVERSEE AND BE INVOLVED IN ALL PHASES OF THE WORK.

NO.	DATE	REVISIONS	ORIGINATED	DESIGNED	APPROVED

<b>THE REPUBLIC OF INDONESIA</b> MINISTRY OF PUBLIC WORKS DIRECTORATE GENERAL OF WATER RESOURCES DEVELOPMENT AND DIRECTORATE GENERAL OF HUMAN SETTLEMENT		PROJ. 243 CENTRAL JAVA
PRATURSELUNA FLOOD CONTROL PROJECT COMPONENT : JATIBARANG DAM CONSTRUCTION OTHERS		PROJECT NAME FLOOD CONTROL, URBAN DRAINAGE AND WATER RESOURCES DEVELOPMENT IN SEMARANG IN THE REPUBLIC OF INDONESIA DISTRICT SEMARANG CITY
RELOCATION OF EXISTING POWER TRANSMISSION LINE		DRAWING NO. JD-P1-01-PI-1 SHEET NO. 288
JAPAN INTERNATIONAL COOPERATION AGENCY CITI (SHOUBUN) CO., LTD. IN ASSOCIATION WITH PACIFIC CONSULTANTS INTERNATIONAL TAIKOO INTERNATIONAL INC.	DESIGNED CHECKED APPROVED	DATE CONTRACT NO.
CHIEF OF PLANNING AND DESIGN PROJECT MANAGER		SIGNATURE

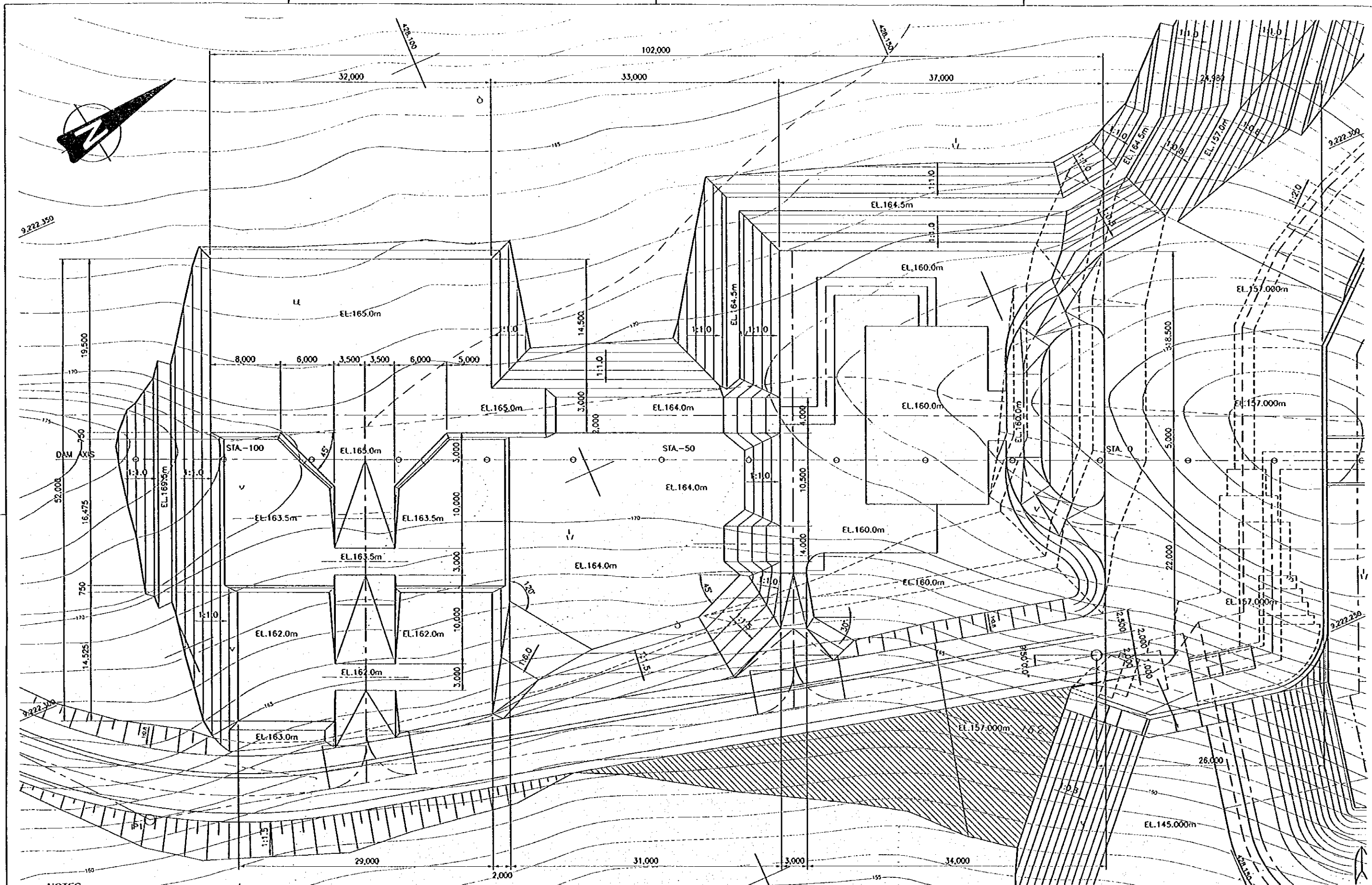


**NOTE**  
 THE CONTRACTOR IS REQUIRED TO DESIGN, CONSTRUCT, TEST AND COMMISSION A RELOCATION OF THE POWER TRANSMISSION LINE AND THE BURIED FIBRE OPTIC CABLE IN ACCORDANCE WITH THE SPECIFICATION, THE DIRECTIONS OF THE ENGINEER ALL IN COMPLETE ACCORDANCE WITH THE REQUIREMENTS OF PERUSAHAAN LISTRIK NEGARA (PLN), THE STATE ELECTRICITY COMPANY OF INDONESIA, WHO SHALL OVERSEE AND BE INVOLVED IN ALL PHASES OF THE WORK.

NO	DATE	REVISIONS	DESIGNED	CHECKED	APPROVED

<b>THE REPUBLIC OF INDONESIA</b> MINISTRY OF PUBLIC WORKS DIRECTORATE GENERAL OF WATER RESOURCES DEVELOPMENT AND DIRECTORATE GENERAL OF HUMAN SETTLEMENT JATI BARANG FLOOD CONTROL PROJECT COMPONENT : JATI BARANG DAM CONSTRUCTION OTHERS <b>RELOCATION OF EXISTING POWER TRANSMISSION LINE</b>		PROJECT CENTRAL JAVA PROJECT NAME FLOOD CONTROL, URBAN DRAINAGE AND WATER RESOURCES DEVELOPMENT IN SEMARANG IN THE REPUBLIC OF INDONESIA DISTRICT SEMARANG CITY DRAWING NO. JD-P1-01-PL-1 SHEET NO. 288 DATE CONTRACT NO.
JAPAN INTERNATIONAL COOPERATION AGENCY (JICA) ENGINEERING CO., LTD. PACIFIC CONSULTANTS INTERNATIONAL JASCO INTERNATIONAL INC.	DESIGNED CHECKED APPROVED CHIEF OF PLANNING AND DESIGN PROJECT MANAGER	

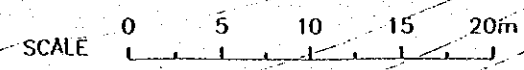




**NOTES**

1. ALL DIMENSIONS ARE IN MILLIMETERS, UNLESS OTHERWISE NOTED.
2. THE EXCAVATION WORKS OF THE DAM MANAGEMENT COMPLEX AREA SHALL BE CARRIED OUT BY THE PACKAGE 1 CONTRACTOR.
3. THE CONSTRUCTION OF THE BUILDINGS AND EXTERNAL WORKS IN THE DAM MANAGEMENT COMPLEX SHALL BE CARRIED OUT BY THE PACKAGE 2 CONTRACTOR.

**EXCAVATION PLAN OF DAM MANAGEMENT COMPLEX**



NO.	DATE	REVISIONS	ORIGINATED	DESIGNED	APPROVED

THE REPUBLIC OF INDONESIA MINISTRY OF PUBLIC WORKS DIRECTORATE GENERAL OF WATER RESOURCES DEVELOPMENT AND DIRECTORATE GENERAL OF HUMAN SETTLEMENT BRATUNSELUNA FLOOD CONTROL PROJECT COMPONENT: JATIBARANG DAM CONSTRUCTION OTHERS EXCAVATION PLAN FOR DAM MANAGEMENT COMPLEX		PROVINCE CENTRAL JAWA PROJECT NAME FLOOD CONTROL, URBAN DRAINAGE AND WATER RESOURCES DEVELOPMENT IN SEMARANG IN THE REPUBLIC OF INDONESIA DISTRICT SEMARANG CITY DRAWING NO. JD-P1-01-Dc-1 SHEET NO. 289 DATE CONTRACT NO.
JAPAN INTERNATIONAL COOPERATION AGENCY CITY ENGINEERING CO., LTD. IN ASSOCIATION WITH PACIFIC CONSULTANTS INTERNATIONAL PABO INTERNATIONAL INC.	DESIGNED CHECKED CHIEF OF PLANNING AND DESIGN PROJECT MANAGER	DATE CONTRACT NO.

