

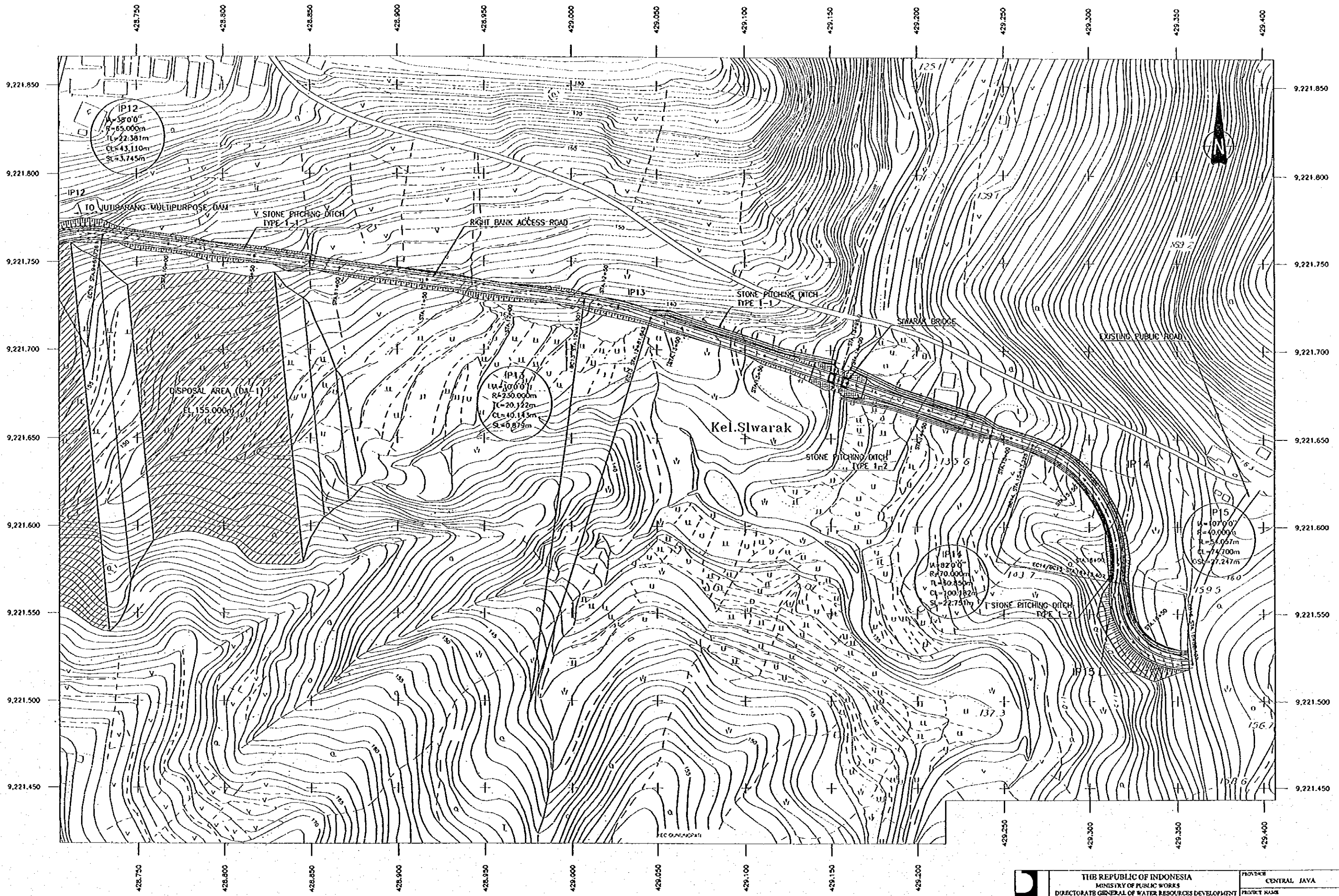


REFERENCE DRAWINGS

- JD-P1-AR-02-1 HORIZONTAL ALIGNMENT AND LAYOUT DATA (1/2)
- JD-P1-AR-R2-2 RIGHT BANK ACCESS ROAD - PLAN (2/2)

NO.	DATE	REVISOR'S	ORGANIZED	DESIGNED	APPROVED

	THE REPUBLIC OF INDONESIA MINISTRY OF PUBLIC WORKS DIRECTORATE GENERAL OF WATER RESOURCES DEVELOPMENT AND DIRECTORATE GENERAL OF HUMAN SETTLEMENT		PROVINCE CENTRAL JAVA
	PRATUNJUNTA FLOOD CONTROL PROJECT COMPONENT: JATIBARANG DAM CONSTRUCTION ACCESS ROAD RIGHT BANK ACCESS ROAD PLAN (1/2)		PROJECT NAME FLOOD CONTROL, URBAN DRAINAGE AND WATER RESOURCES DEVELOPMENT IN SOERABAYA IN THE PROVINCE OF JAWA DISTRICT SEMARANG CITY
JAPAN INTERNATIONAL COOPERATION AGENCY PT ENGINEERING CO., LTD. IN ASSOCIATION WITH PACIFIC CONSULTANTS INTERNATIONAL PAKO INTERNATIONAL INC.	DESIGNED CHECKED CHIEF OF PLANNING AND DESIGN PROJECT MANAGER	APPROVED 	DRAWING NO. JD-P1-AR-R2-1 SHEET NO. 263 DATE CONTRACTED

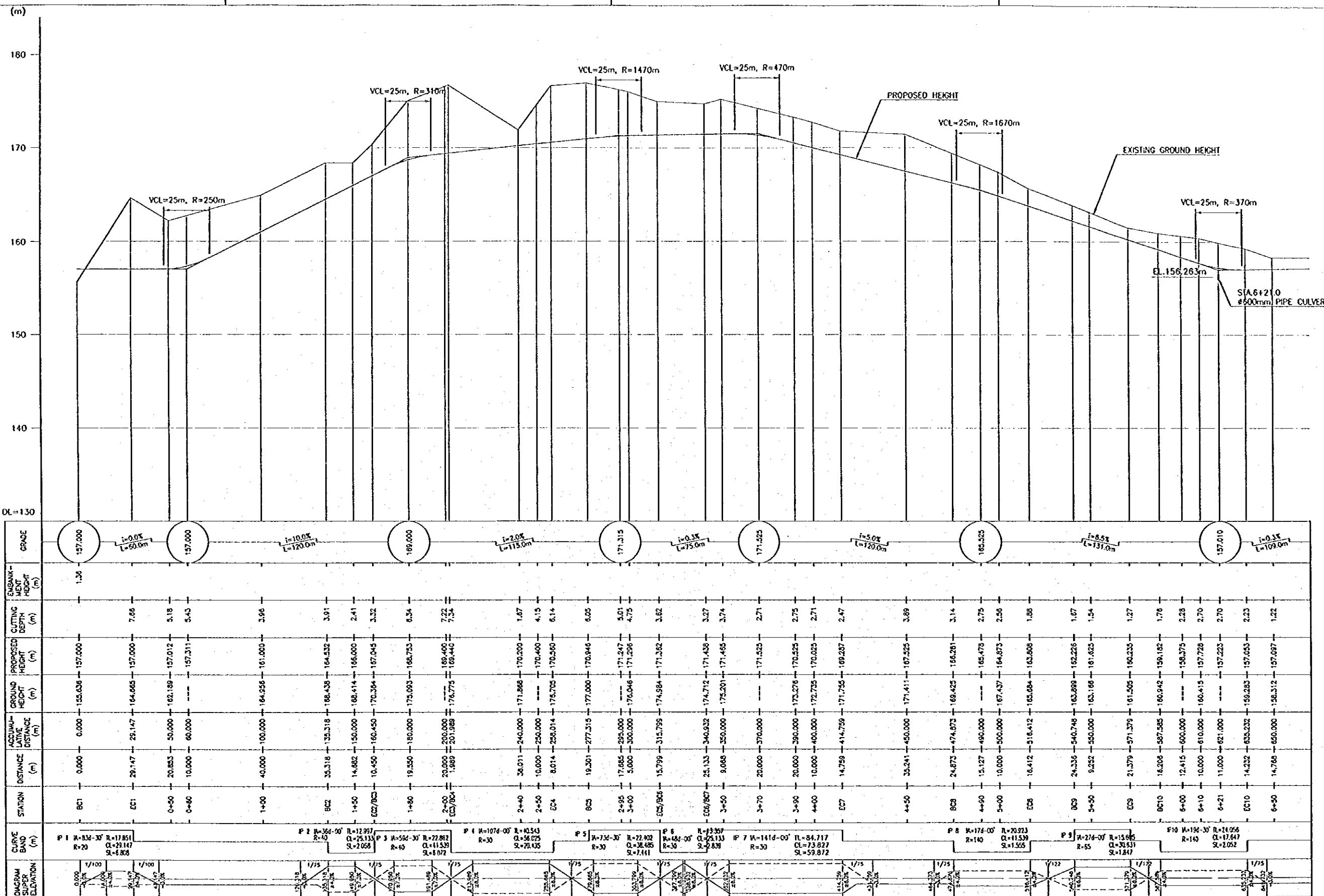


REFERENCE DRAWINGS

- JD-P1-AR-Ge-1 HORIZONTAL ALIGNMENT AND LAYOUT DATA (1/2)
- JD-P1-AR-Rr-1 RIGHT BANK ACCESS ROAD - PLAN (1/2)

NO.	DATE	REVISIONS	ORIGINATED	DESIGNED	APPROVED

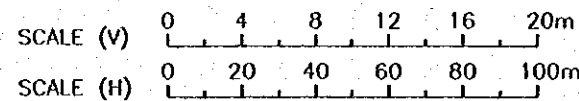
	THE REPUBLIC OF INDONESIA MINISTRY OF PUBLIC WORKS DIRECTORATE GENERAL OF WATER RESOURCES DEVELOPMENT AND DIRECTORATE GENERAL OF HUMAN SETTLEMENT BRATUNSELUNA FLOOD CONTROL PROJECT COMPONENT: JATIBARANG DAM CONSTRUCTION ACCESS ROAD RIGHT BANK ACCESS ROAD PLAN (2/2)		PROVIDER CENTRAL JAVA
	SAFAR INTERNATIONAL COOPERATION AGENCY C/O ENGINEERING CO., LTD. IN ASSOCIATION WITH PACIFIC CONSULTANTS INTERNATIONAL SARAF INTERNATIONAL INC.		PROJECT NAME FLOOD CONTROL, URBAN DRAINAGE AND WATER RESOURCES DEVELOPMENT IN SEMARANG IN THE REPUBLIC OF INDONESIA DISTRICT SEMARANG CITY
	DESIGNED CHECKED CHIEF OF PLANNING AND DESIGN PROJECT MANAGER		DRAWING NO. JD-P1-AR-Rr-2 SHEET NO. 284 DATE CONTRACT NO.
	APPROVED		DATE



STATION	DISTANCE (m)	ACCUMULATED DISTANCE (m)	GROUND HEIGHT (m)	PROPOSED HEIGHT (m)	CUTTING DEPTH (m)	EMBANKMENT HEIGHT (m)	GRADE
8C1	0.00	0.00	155.636	157.000	1.36	1.36	157.000
8C2	29.147	29.147	164.665	157.000	7.66		157.000
8+00	20.853	50.000	162.189	157.012	5.18		157.000
8+60	10.000	60.000	161.000	157.311	5.43		157.000
1+00	40.000	100.000	164.556	161.000	3.56		169.000
8C3	35.318	135.318	166.435	164.532	3.91		169.000
1+50	14.682	150.000	168.414	168.000	2.41		171.315
8C4	10.450	160.450	170.304	167.045	3.32		171.315
1+80	19.550	180.000	175.003	168.753	6.34		171.525
2+00	20.000	200.000	176.400	169.400	7.00		165.325
8C5	1.889	201.889	176.775	169.400	7.37		157.010
2+40	38.011	240.000	171.868	170.200	1.67		
2+50	10.000	250.000	170.400	170.400	4.15		
8C6	8.014	258.014	176.705	176.580	6.14		
8C7	16.201	274.215	177.000	176.946	6.05		
2+95	17.685	295.000	171.247	171.247	5.01		
3+00	5.000	300.000	176.046	171.296	4.75		
8C8	15.799	315.799	174.984	171.382	3.62		
8C9	25.133	340.932	174.712	171.438	3.27		
3+50	9.068	350.000	176.201	171.485	3.74		
3+70	20.000	370.000	171.525	171.525	2.71		
3+90	20.000	390.000	173.276	176.525	2.75		
4+00	10.000	400.000	172.735	176.025	2.71		
8C9	14.759	414.759	171.755	169.287	2.47		
4+50	35.241	450.000	171.411	167.525	3.89		
8C10	24.873	474.873	169.425	166.281	3.14		
4+90	15.127	490.000	165.478	165.478	2.75		
5+00	10.000	500.000	167.437	164.673	2.56		
8C10	16.412	516.412	163.684	163.608	1.88		
5+50	24.336	540.748	163.899	162.226	1.67		
8C11	9.252	550.000	163.166	161.623	1.54		
6+00	21.379	571.379	161.505	160.235	1.27		
8C12	16.208	587.587	160.942	158.182	1.76		
6+40	12.415	600.000	158.375	158.375	2.28		
6+10	10.000	610.000	160.415	157.728	2.70		
6+21	11.000	621.000	157.223	157.223	2.70		
8C13	14.232	635.232	159.283	157.023	2.23		
6+50	14.768	650.000	158.312	157.097	1.22		

REFERENCE DRAWINGS

- JD-P1-AR-Rr-1 RIGHT BANK ACCESS ROAD - PLAN (1/2)
- JD-P1-AR-Rr-2 RIGHT BANK ACCESS ROAD - PLAN (2/2)
- JD-P1-AR-Rr-4 RIGHT BANK ACCESS ROAD - PROFILE (2/3)
- JD-P1-AR-Rr-5 RIGHT BANK ACCESS ROAD - PROFILE (3/3)



NO.	DATE	REVISIONS	ORIGINATED	DESIGNED	APPROVED

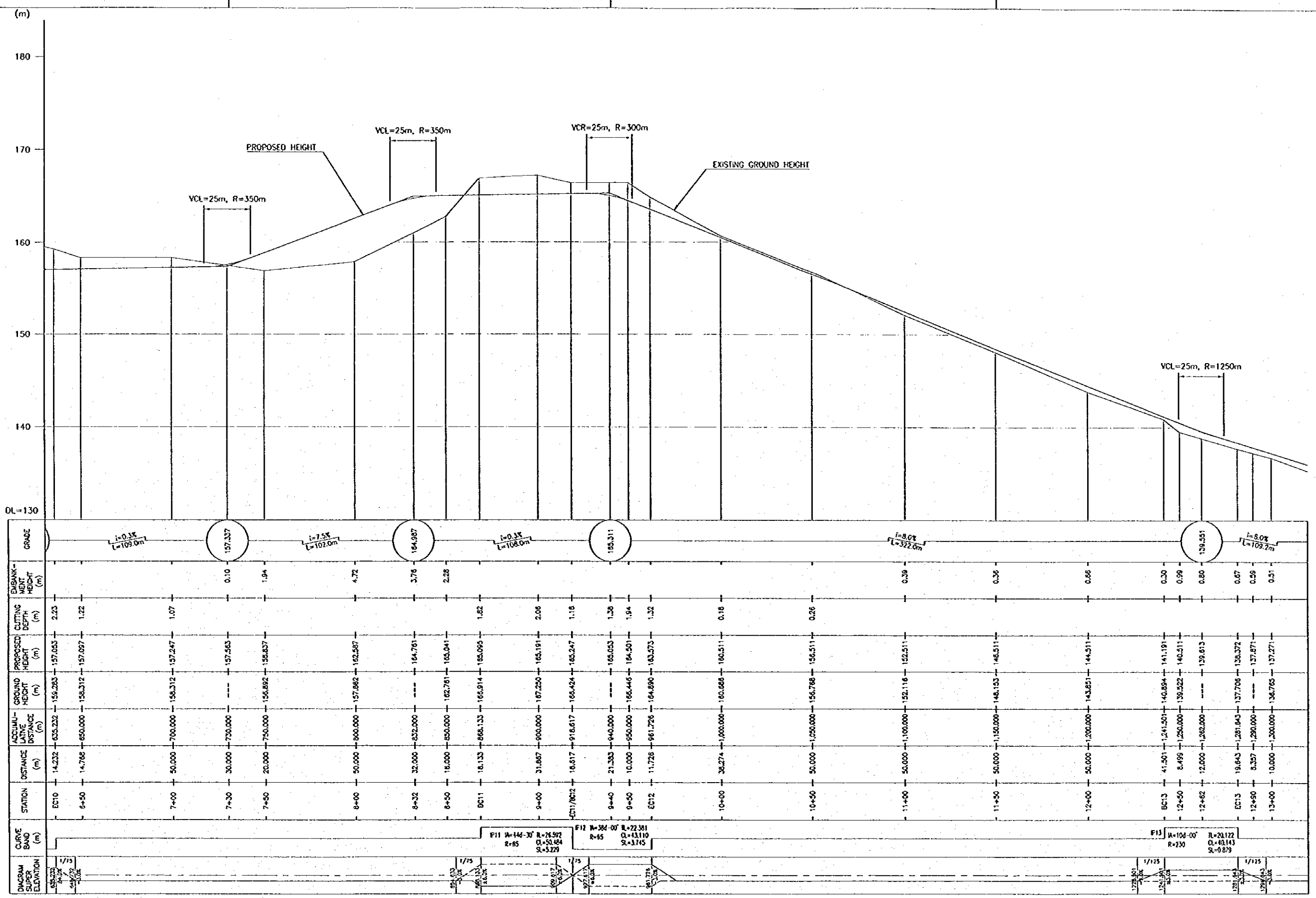
THIS REPUBLIC OF INDONESIA
 MINISTRY OF PUBLIC WORKS
 DIRECTORATE GENERAL OF WATER RESOURCES DEVELOPMENT
 AND DIRECTORATE GENERAL OF HUMAN SETTLEMENT

JATI TUNJUNG FLOOD CONTROL PROJECT
 COMPONENT: JATI BARANG DAM CONSTRUCTION
 ACCESS ROAD
 RIGHT BANK ACCESS ROAD
 PROFILE (1/3)

JAPAN INTERNATIONAL COOPERATION AGENCY
 CITY ENGINEERING CO., LTD. IN ASSOCIATION WITH
 PACIFIC CONSULTANTS INTERNATIONAL
 PAKOD INTERNATIONAL INC.

DESIGNED: [Signature]
 CHECKED: [Signature]
 APPROVED: [Signature]
 PROJECT MANAGER

PROJ. NO. CENTRAL JAVA
 PROJECT NAME: FLOOD CONTROL, URBAN DRAINAGE AND WATER RESOURCES DEVELOPMENT IN SEMARANG IN THE REPUBLIC OF INDONESIA
 DISTRICT: SEMARANG CITY
 DRAWING NO. JD-P1-AR-Rr-3
 SHEET NO. 265
 DATE: [Date]
 CONTRACT NO. [Number]

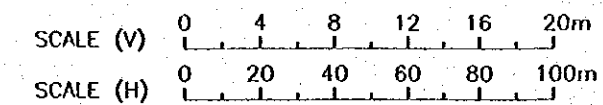


STATION	DISTANCE (m)	ACCUMULATIVE DISTANCE (m)	GROUND HEIGHT (m)	PROPOSED HEIGHT (m)	CUTTING DEPTH (m)	EMBANKMENT HEIGHT (m)
EC10	14.232	635.232	155.283	157.053	2.23	
6+50	14.766	650.000	155.312	157.097	1.22	
7+00	50.000	700.000	156.312	157.247	1.07	
7+30	30.000	730.000		157.563		0.10
7+50	20.000	750.000	156.892	158.837		1.94
8+00	50.000	800.000	157.882	162.587		4.72
8+32	32.000	832.000		164.781		3.76
8+50	18.000	850.000	162.781	165.041		2.28
8C11	18.133	868.133	166.914	165.095		1.82
9+00	31.867	900.000	167.250	165.191		2.06
9C11/8C12	16.617	916.617	166.424	165.247		1.18
9+40	21.383	940.000		165.053		1.38
9+50	10.000	950.000	166.446	164.591		1.94
9C12	11.728	961.728	164.890	163.573		1.32
10+00	38.274	1,000.000	160.686	160.511		0.18
10+50	50.000	1,050.000	156.768	156.511		0.26
11+00	50.000	1,100.000	152.116	152.511		0.39
11+50	50.000	1,150.000	146.153	146.511		0.36
12+00	50.000	1,200.000	143.851	144.511		0.66
8C13	41.501	1,241.501	140.894	141.191		0.30
12+50	8.499	1,250.000	139.522	140.511		0.99
12+62	12.000	1,262.000		139.613		0.80
8C13	19.643	1,281.643	137.706	138.372		0.67
12+90	8.357	1,290.000		137.871		0.59
13+00	10.000	1,300.000	136.765	137.271		0.51



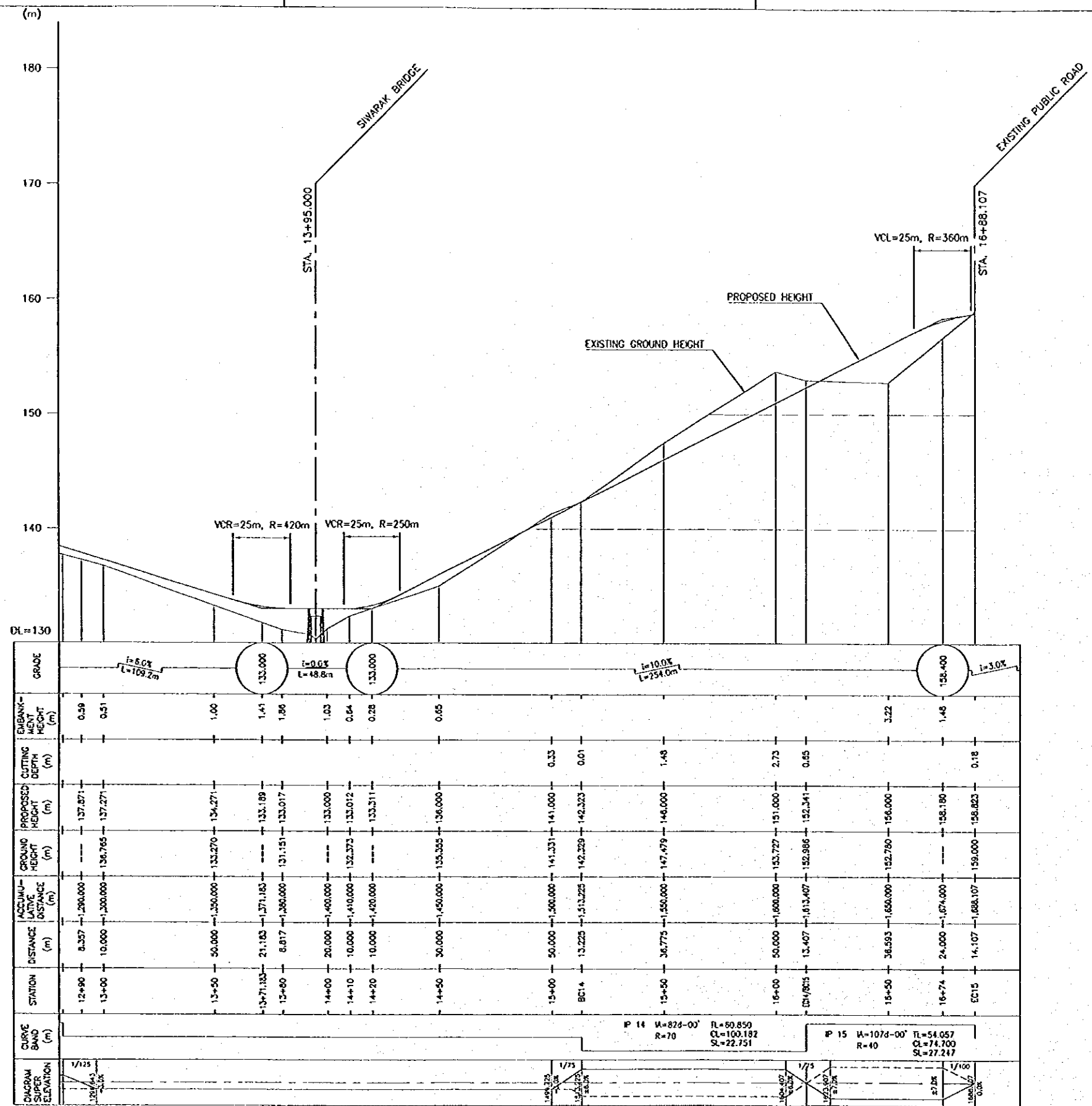
REFERENCE DRAWINGS

- JD-P1-AR-Rr-1 RIGHT BANK ACCESS ROAD - PLAN (1/2)
- JD-P1-AR-Rr-2 RIGHT BANK ACCESS ROAD - PLAN (2/2)
- JD-P1-AR-Rr-3 RIGHT BANK ACCESS ROAD - PROFILE (1/3)
- JD-P1-AR-Rr-5 RIGHT BANK ACCESS ROAD - PROFILE (3/3)

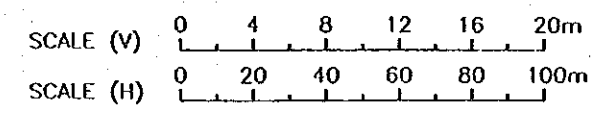


NO.	DATE	REVISIONS	DESIGNED	APPROVED

THE REPUBLIC OF INDONESIA MINISTRY OF PUBLIC WORKS DIRECTORATE GENERAL OF WATER RESOURCES DEVELOPMENT AND DIRECTORATE GENERAL OF HUMAN SETTLEMENT		PROVINCE CENTRAL JAVA
TRATUNSELUNA FLOOD CONTROL PROJECT COMPONENT: JATIBARANG DAM CONSTRUCTION ACCESS ROAD RIGHT BANK ACCESS ROAD PROFILE (2/3)		PROJECT NAME FLOOD CONTROL, URBAN DRAINAGE AND WATER RESOURCES DEVELOPMENT IN SEMARANG IN THE REPUBLIC OF INDONESIA
SAJAN INTERNATIONAL COOPERATION AGENCY CHE ENGINEERING CO. LTD. IN ASSOCIATION WITH PACIFIC CONSULTANTS INTERNATIONAL SAJAN INTERNATIONAL INC.		DRAUGHTING NO. JD-P1-AR-Rr-4 SHEET NO. 268
CHIEF OF PLANNING AND DESIGN PROJECT MANAGER		DATE CONTRACT NO.



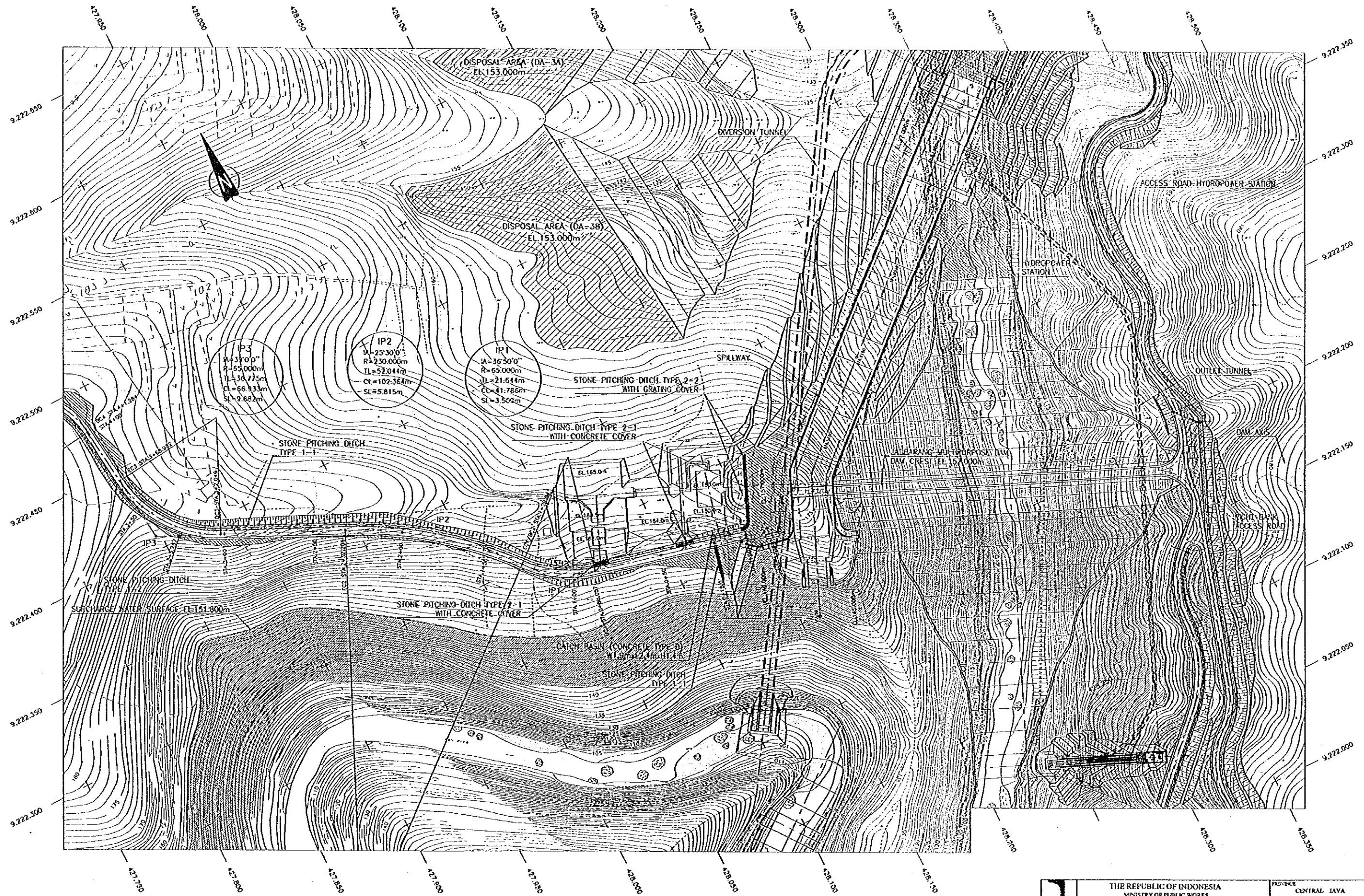
STATION	DISTANCE (m)	ACCUMULATED DISTANCE (m)	GROUND HEIGHT (m)	PROPOSED HEIGHT (m)	CUTTING DEPTH (m)	EMBANKMENT HEIGHT (m)
12+90	0.00	0.00	137.871	137.871	0.00	0.00
13+00	10.00	10.00	136.765	137.271	0.506	0.51
13+50	50.00	60.00	134.270	134.271	0.001	1.00
13+71.833	21.833	31.833	133.183	133.189	0.006	1.41
13+80	30.00	40.00	131.151	133.017	1.866	1.86
14+00	50.00	60.00	133.000	133.000	0.000	1.03
14+10	60.00	70.00	132.373	133.012	0.639	0.64
14+20	70.00	80.00	133.311	133.311	0.000	0.28
14+50	100.00	150.00	135.355	136.000	0.645	0.05
15+00	150.00	300.00	141.331	141.000	0.331	0.33
BC14	13.223	313.223	142.259	142.253	0.006	0.01
15+50	160.00	360.00	147.479	146.000	1.479	1.48
16+00	210.00	510.00	152.727	151.000	1.727	2.73
EC14/8215	13.407	523.407	152.986	152.341	0.645	0.65
16+50	260.00	660.00	152.750	156.000	3.250	3.22
16+74	284.00	684.00	156.180	156.180	0.000	1.48
EC15	14.107	698.107	156.823	156.823	0.000	0.18



- REFERENCE DRAWINGS**
- JD-P1-AR-Rr-1 RIGHT BANK ACCESS ROAD - PLAN (1/2)
 - JD-P1-AR-Rr-2 RIGHT BANK ACCESS ROAD - PLAN (2/2)
 - JD-P1-AR-Rr-3 RIGHT BANK ACCESS ROAD - PROFILE (1/3)
 - JD-P1-AR-Rr-4 RIGHT BANK ACCESS ROAD - PROFILE (2/3)

NO.	DATE	REVISIONS	ORIGINATED	DESIGNED	APPROVED

THE REPUBLIC OF INDONESIA MINISTRY OF PUBLIC WORKS DIRECTORATE GENERAL OF WATER RESOURCES DEVELOPMENT AND DIRECTORATE GENERAL OF HUMAN SETTLEMENT		PROVINCE CENTRAL JAVA	
JATITUNSELUMA FLOOD CONTROL PROJECT COMPONENT : JATITUNSELUMA DAM CONSTRUCTION ACCESS ROAD RIGHT BANK ACCESS ROAD PROFILE (3/3)		PROJECT NAME FLOOD CONTROL, URBAN DRAINAGE AND WATER RESOURCES DEVELOPMENT IN SEMARANG IN THE REPUBLIC OF INDONESIA CONTRACT SEMARANG CITY	
JAWA INTERNATIONAL COOPERATION AGENCY CIBI BANGUNAN CO. LTD. IN ASSOCIATION WITH PACIFIC CONSULTANTS INTERNATIONAL PARTNER INTERNATIONAL INC.		DESIGNED CHECKED	DATE CONTRACT NO.
APPROVED CHIEF OF PLANNING AND DESIGN PROJECT MANAGER		[Signature]	

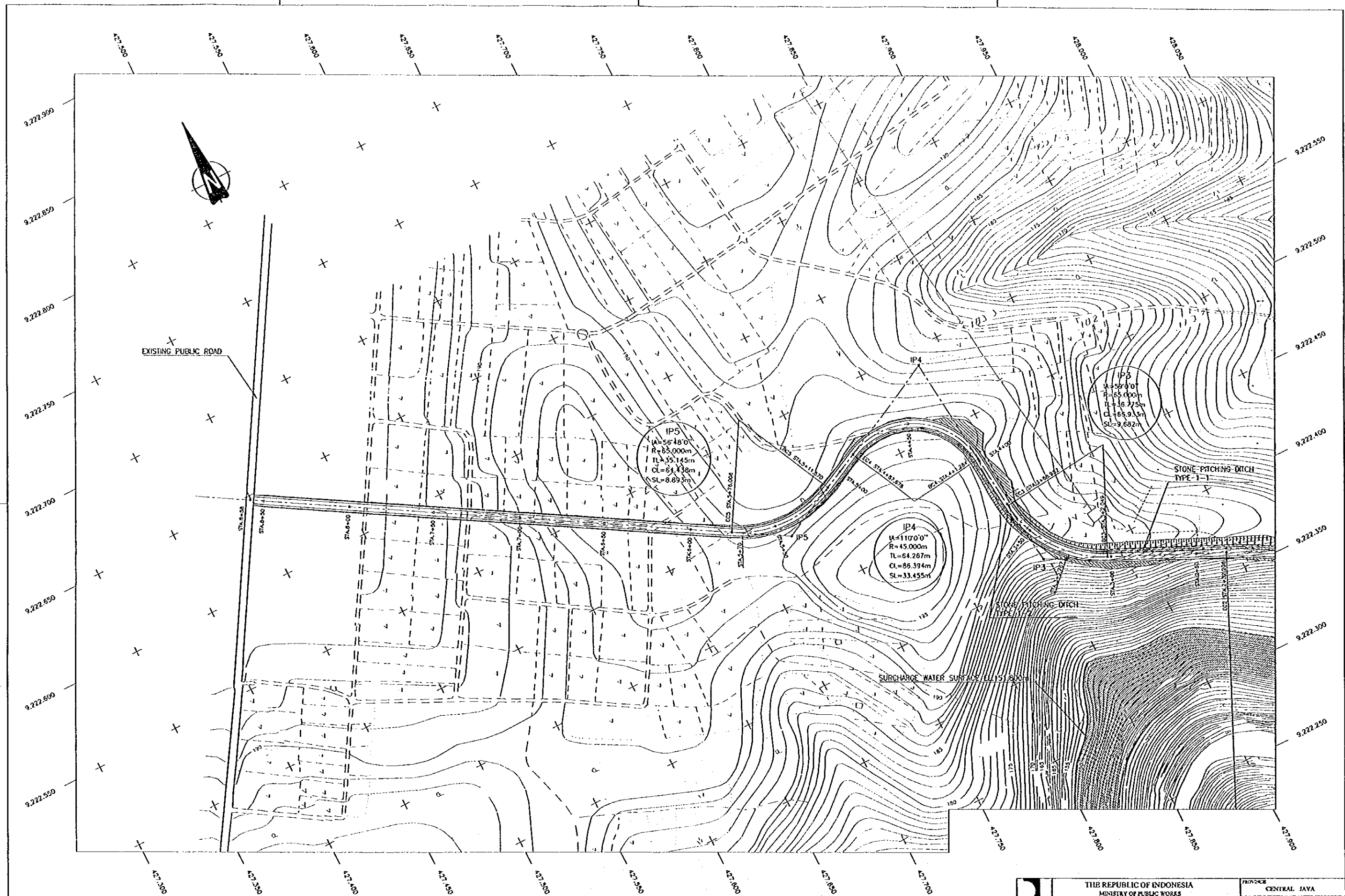


REFERENCE DRAWINGS

- JD-P1-AR-Ge-2 HORIZONTAL ALIGNMENT AND LAYOUT DATA (2/2)
- JD-P1-AR-Lr-2 LEFT BANK ACCESS ROAD - PLAN (2/2)

NO.	DATE	REVISIONS	ORIGINATED	CHECKED	APPROVED

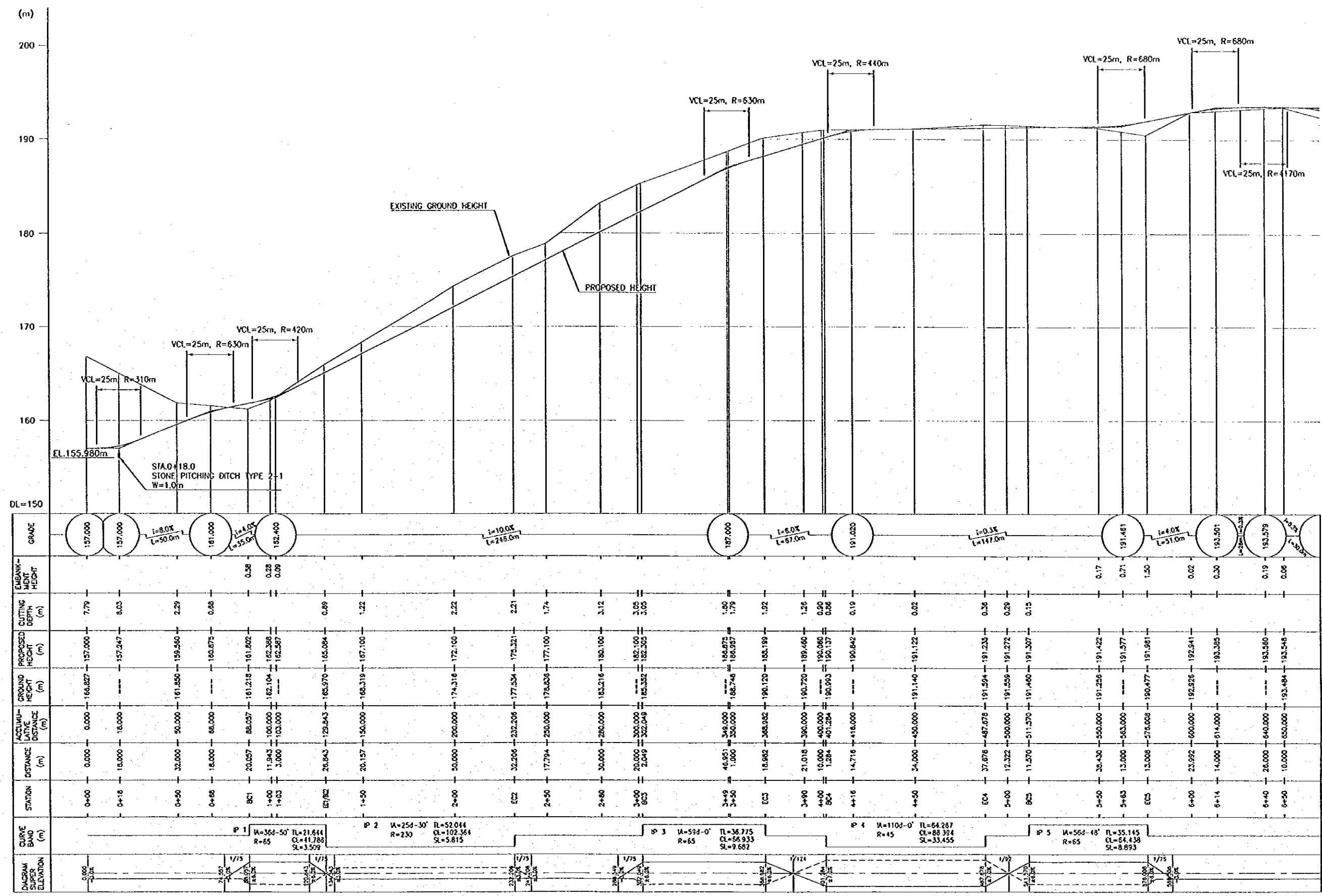
		THE REPUBLIC OF INDONESIA MINISTRY OF PUBLIC WORKS DIRECTORATE GENERAL OF WATER RESOURCES DEVELOPMENT AND DIRECTORATE GENERAL OF HUMAN SETTLEMENT		PROVINCE CENTRAL JAVA
		FRATUNSELUNA FLOOD CONTROL PROJECT COMPONENT: JATIBARANG DAM CONSTRUCTION ACCESS ROAD LEFT BANK ACCESS ROAD PLAN (1/2)		PROJECT NAME FLOOD CONTROL, URBAN URUKAN AND WATER RESOURCES DEVELOPMENT IN SEMARANG IN THE REPUBLIC OF INDONESIA DISTRICT SEMARANG CITY
JAPAN INTERNATIONAL COOPERATION AGENCY CITY ENGINEERING CO., LTD. IN COOPERATION WITH PACIFIC CONSULTANTS INTERNATIONAL PACO INTERNATIONAL INC.		DESIGNED CHECKED DRAWN	DATE CONTRACT NO.	DRAWING NO. JD-P1-AR-Lr-1 SHEET NO. 288



REFERENCE DRAWINGS
 JO-P1-AR-Ga-2 HORIZONTAL ALIGNMENT AND LAYOUT DATA (2/2)
 JO-P1-AR-Lr-1 LEFT BANK ACCESS ROAD - PLAN (1/2)

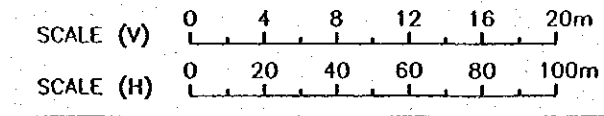
NO.	DATE	REVISIONS	ORIGINATED	DESIGNED	APPROVED

		THE REPUBLIC OF INDONESIA MINISTRY OF PUBLIC WORKS DIRECTORATE GENERAL OF WATER RESOURCES DEVELOPMENT AND DIRECTORATE GENERAL OF HUMAN SETTLEMENT JATISUNDELA FLOOD CONTROL PROJECT COMPONENT: JATIBARANG DAM CONSTRUCTION ACCESS ROAD LEFT BANK ACCESS ROAD PLAN (2/2)		PROVINCE CENTRAL JAVA
DIJAN INTERNATIONAL OPERA IPIR AGSNEY CITY ENGINEERING CO. LTD. IN ASSOCIATION WITH PACIFIC CONSULTANTS INTERNATIONAL PAKHO INTERNATIONAL INC.		DESIGNED CHECKED DATE	PROJECT NAME FLOOD CONTROL, URBAN DRAINAGE AND WATER RESOURCES DEVELOPMENT IN SEMARANG IN THE REPUBLIC OF INDONESIA CONTRACT SEMARANG CITY DRAWING NO. JO-P1-AR-Lr-2 SHEET NO. 269	CONTRACT NO.
CHIEF OF PLANNING AND DESIGN PROJECT MANAGER		DATE		



STATION	DISTANCE (m)	ACCUMULATIVE DISTANCE (m)	GROUND HEIGHT (m)	PROPOSED HEIGHT (m)	CUTTING DEPTH (m)	EMBANKMENT HEIGHT (m)	GRADE
0+00	0.00	0.00	166.827	157.000	7.79		157.000
0+18	18.00	18.00		157.247	8.03		157.000
0+50	32.00	50.00	161.850	159.550	2.29		161.000
0+65	15.00	65.00		160.675	0.68		161.000
BC1	20.057	85.057	161.218	161.802	0.58	0.58	162.400
1+00	11.943	100.000	162.104	162.368	0.28	0.28	
1+03	3.00	103.000		162.357	0.09	0.09	
ET/BC2	26.843	129.843	165.970	165.084	0.89		
1+50	20.157	150.000	168.319	167.100	1.22		
2+00	50.00	200.000	174.316	172.100	2.22		
EC2	32.286	232.286	177.534	175.321	2.21		
2+50	17.794	250.000	176.836	177.100	1.74		
2+80	30.00	280.000	185.216	185.100	3.12		
3+00	20.00	300.000		185.100	3.05		
BC3	2.049	302.049	185.352	182.303	3.05		
3+49	46.951	348.000		186.875	1.90		
3+50	1.000	350.000	186.746	186.957	1.79		
EC3	18.982	368.982	190.120	185.199	1.92		
3+90	21.018	390.000	190.720	189.460	1.26		
4+00	10.00	400.000		190.060	0.90		
BC4	1.284	401.284	190.993	190.137	0.86		
4+16	14.716	416.000		190.842	0.19		
4+50	34.00	450.000	191.140	191.102	0.02		
EC4	37.678	487.678	191.594	191.235	0.36		
5+00	12.322	500.000	191.559	191.272	0.29		
BC5	11.570	511.570	191.460	191.307	0.15		
5+50	38.430	550.000	191.250	191.422	0.17		
5+63	13.00	563.000		191.577	0.71		
EC5	13.008	576.008	190.477	191.981	1.50		
6+00	23.992	600.000	192.826	192.841	0.02		
6+14	14.00	614.000		193.395	0.30		
6+40	26.00	640.000		193.560	0.19		
6+50	10.00	650.000	193.484	193.546	0.06		

- REFERENCE DRAWINGS
- JD-P1-AR-Lr-1 LEFT BANK ACCESS ROAD - PLAN (1/2)
 - JD-P1-AR-Lr-2 LEFT BANK ACCESS ROAD - PLAN (2/2)
 - JD-P1-AR-Lr-4 LEFT BANK ACCESS ROAD - PROFILE (2/2)



NO	DATE	REVISIONS	COORDINATED	DESIGNED	APPROVED

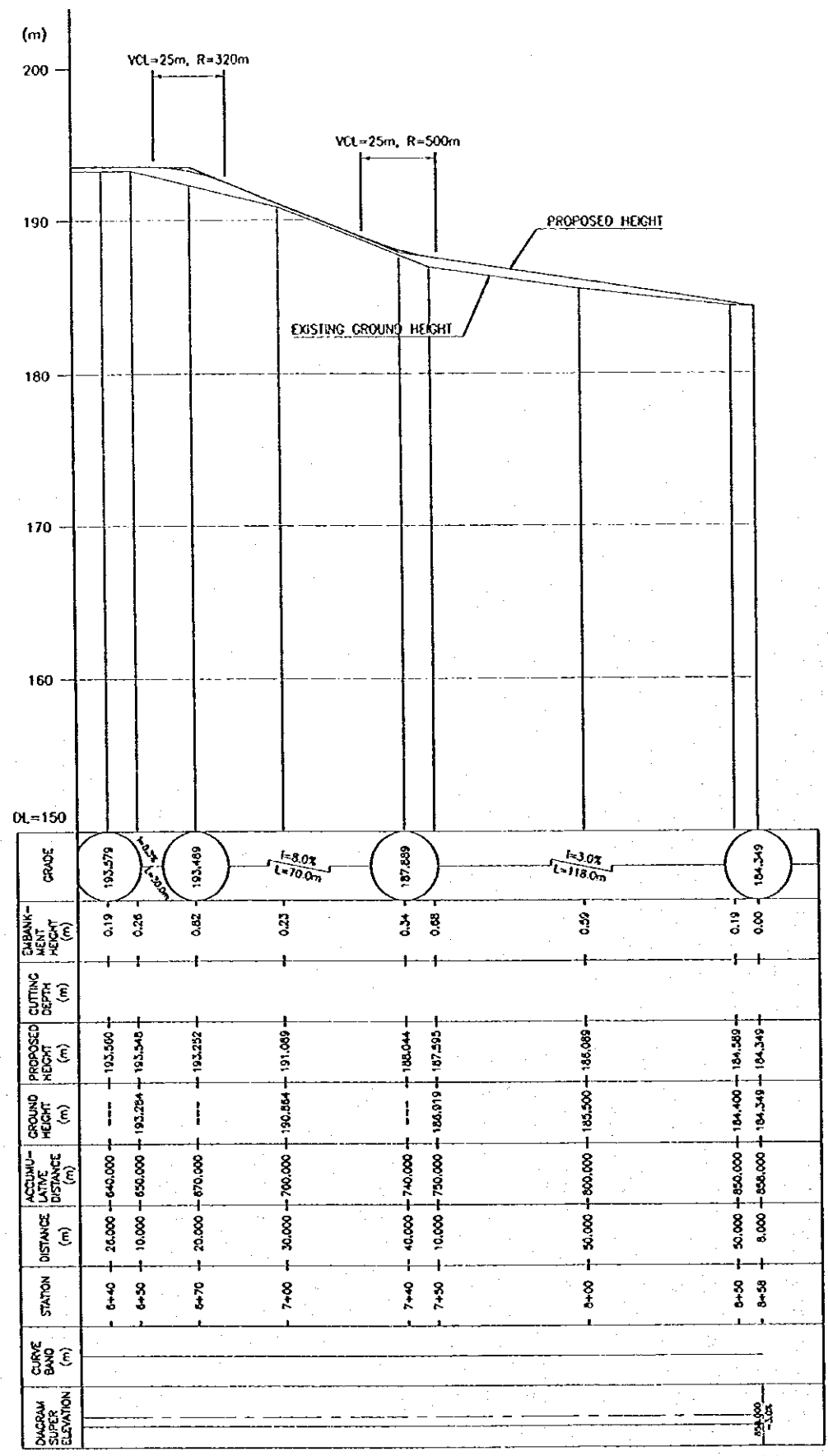
THE REPUBLIC OF INDONESIA
 MINISTRY OF PUBLIC WORKS
 DIRECTORATE GENERAL OF WATER RESOURCES DEVELOPMENT AND DIRECTORATE GENERAL OF HUMAN SETTLEMENT

JATUNSELUNA FLOOD CONTROL PROJECT
 COMPONENT: JATIBARANG DAM CONSTRUCTION
 ACCESS ROAD
 LEFT BANK ACCESS ROAD
 PROFILE (1/2)

PROVINCE: CENTRAL JAWA
 PROJECT NAME: FLOOD CONTROL, URBAN DRAINAGE AND WATER RESOURCES DEVELOPMENT IN SEMARANG IN THE REPUBLIC OF INDONESIA
 DISTRICT: SEMARANG CITY
 DRAWING NO. JD-P1-AR-Lr-3
 SHEET NO. 270
 DATE: CONTRACT NO.:

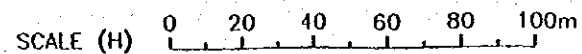
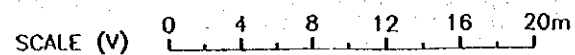
JAPAN INTERNATIONAL COOPERATION AGENCY
 CITY ENGINEERING CO., LTD. IN ASSOCIATION WITH
 PACIFIC CONSULTANTS INTERNATIONAL
 PACIFIC INTERNATIONAL INC.

DESIGNED: CHECKED: APPROVED: PROJECT MANAGER:



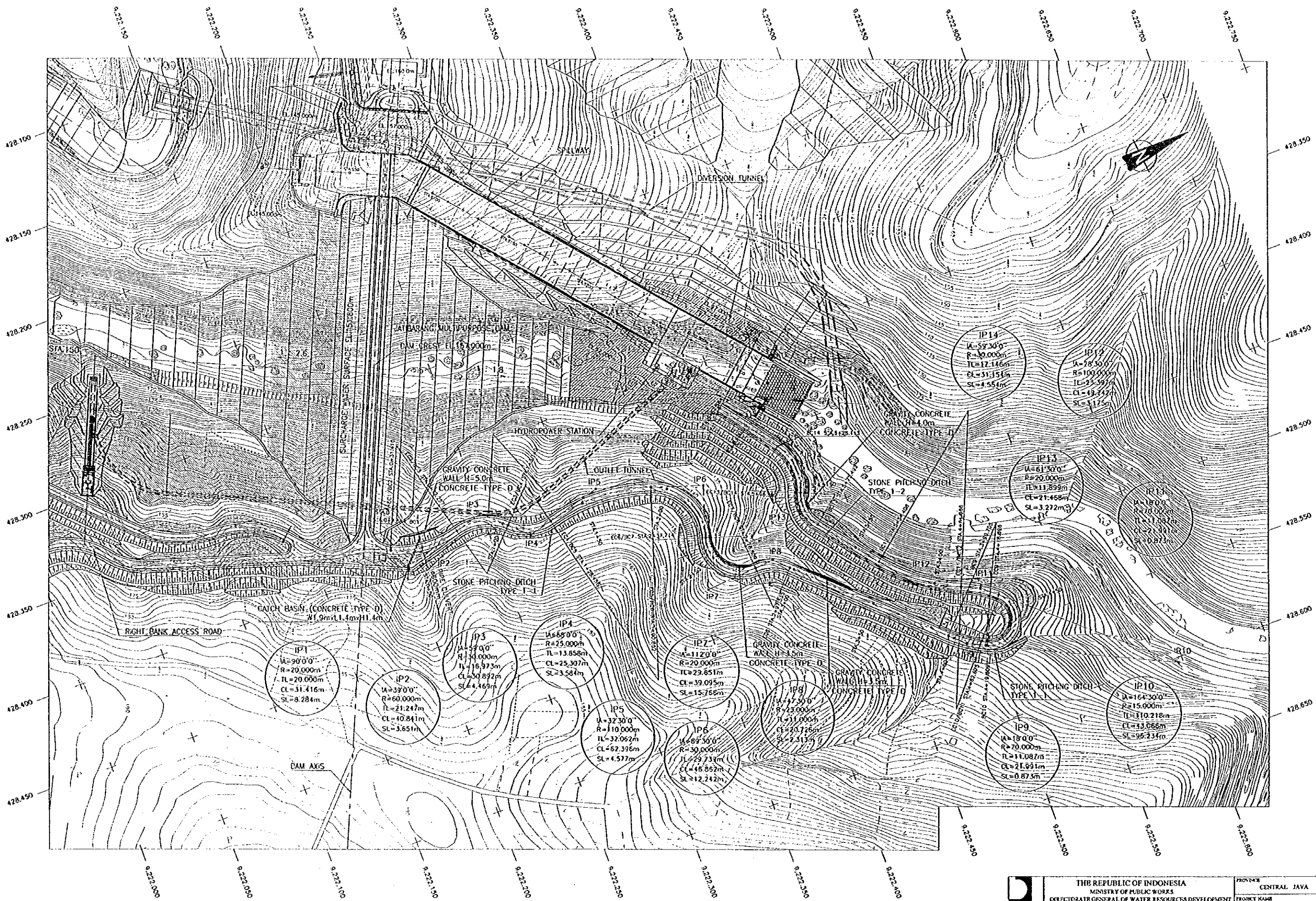
REFERENCE DRAWINGS

- JD-P1-AR-Lr-1 LEFT BANK ACCESS ROAD - PLAN (1/2)
- JD-P1-AR-Lr-2 LEFT BANK ACCESS ROAD - PLAN (2/2)
- JD-P1-AR-Lr-3 LEFT BANK ACCESS ROAD - PROFILE (1/2)



NO.	DATE	REVISIONS	PROPOSED	DESIGNED	APPROVED

THE REPUBLIC OF INDONESIA MINISTRY OF PUBLIC WORKS DIRECTORATE GENERAL OF WATER RESOURCES DEVELOPMENT AND DIRECTORATE GENERAL OF HUMAN SETTLEMENT		PROVINCE CENTRAL JAVA
JATUNSELUNA FLOOD CONTROL PROJECT COMPONENT: JATIBARAH DAM CONSTRUCTION ACCESS ROAD LEFT BANK ACCESS ROAD PROFILE (2/2)		PROJECT NAME FLOOD CONTROL, URBAN DRAINAGE AND WATER RESOURCES DEVELOPMENT IN SEMARANG IN THE REPUBLIC OF INDONESIA DISTRICT SEMARANG CITY
DESIGNED CHECKED APPROVED CHIEF OF PLANNING AND DESIGN PROJECT MANAGER		DRAWING NO. JD-P1-AR-Lr-4 SHEET NO. 271 DATE CONTRACT NO.

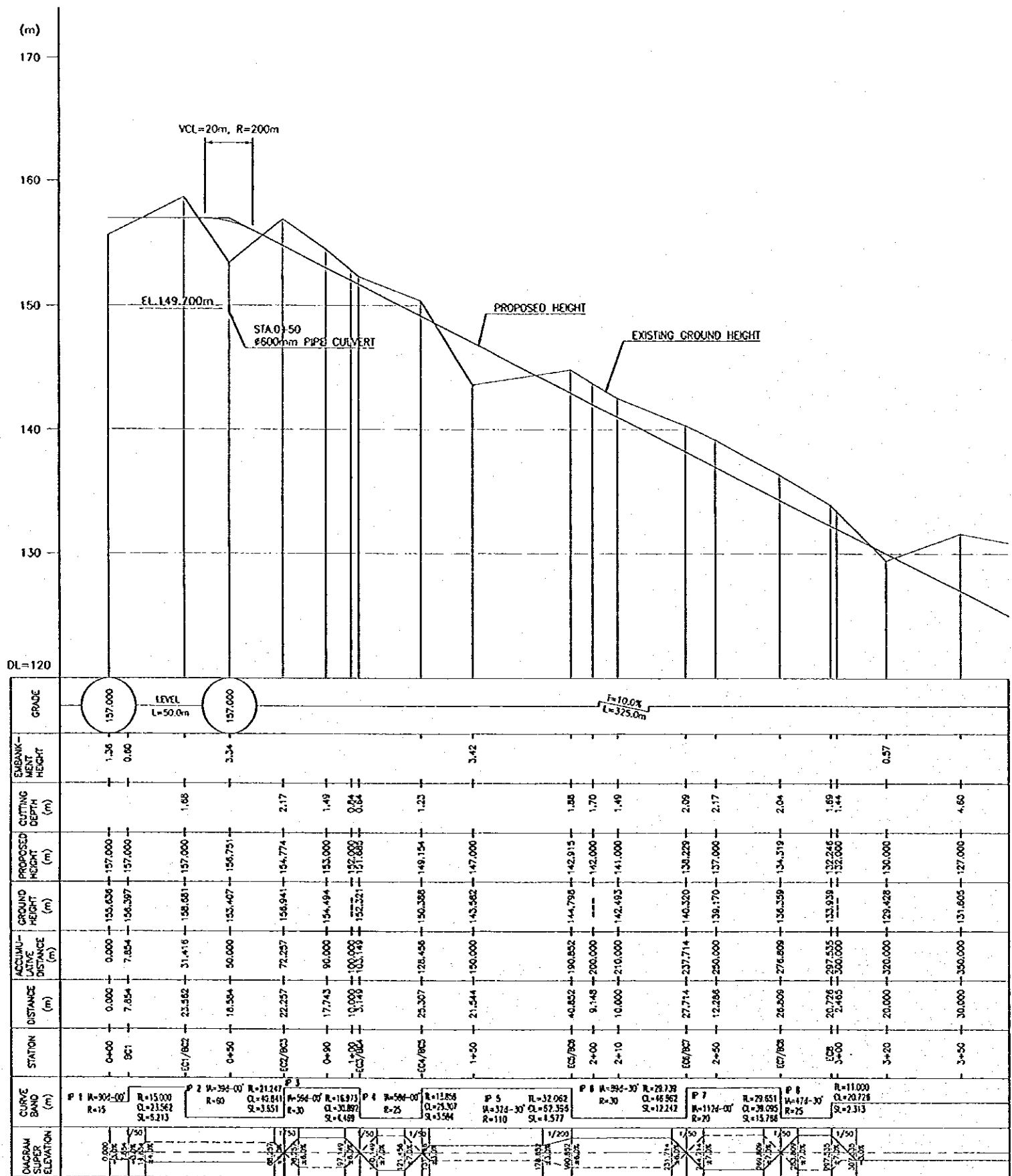


REFERENCE DRAWINGS

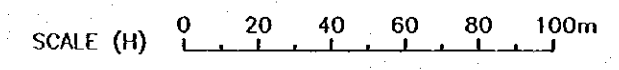
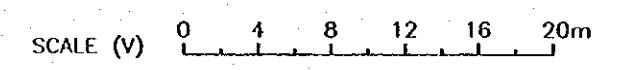
JD-P1-AR-Ca-1 HORIZONTAL ALIGNMENT AND LAYOUT DATA (1/2)

NO.	DATE	REVISIONS	ORIGINATED	DESIGNED	APPROVED

	THE REPUBLIC OF INDONESIA MINISTRY OF PUBLIC WORKS AND INFRASTRUCTURE		PROJECT NO. CENTRAL JAVA
	DIRECTORATE GENERAL OF WATER RESOURCES DEVELOPMENT AND DIRECTORATE GENERAL OF HUMAN SETTLEMENT		PROJECT NAME FLOOD CONTROL, URBAN DRAINAGE AND WATER RESOURCES DEVELOPMENT IN SEMARANG IN THE REPUBLIC OF INDONESIA
	JATUNSEUNA FLOOD CONTROL PROJECT COMPONENT : JATIBARANG DAM CONSTRUCTION ACCESS ROAD ACCESS ROAD TO HYDROPOWER STATION PLAN		DISTRICT SEMARANG CITY
	DEAN INTERNATIONAL COOPERATION AGENCY CITI ENGINEERING CO., LTD. IN PARTNERSHIP WITH PACIFIC CONSULTANTS INTERNATIONAL PAKSI INTERNATIONAL, INC.		DRAWING NO. JD-P1-AR-Hr-1 SHEET NO. 272
DESIGNED CHECKED CHIEF OF PLANNING AND DESIGN PROJECT MANAGER	DATE	CONTRACT NO.	



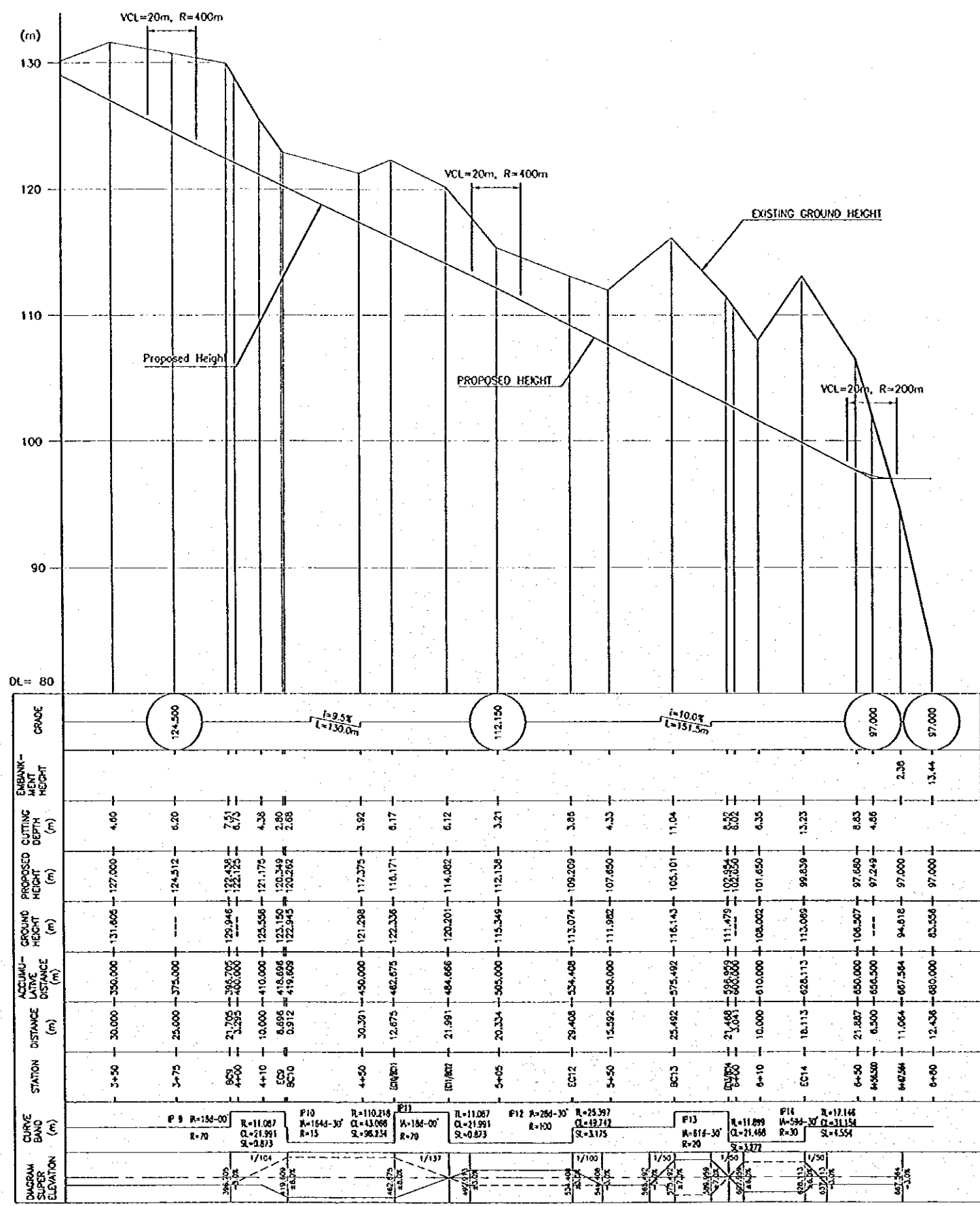
STATION	DISTANCE (m)	ACCUMULATIVE DISTANCE (m)	GROUND HEIGHT (m)	PROPOSED HEIGHT (m)	CUTTING DEPTH (m)	EMBANKMENT HEIGHT (m)	GRADE
0+00	0.000	0.000	155.636	157.000	1.36	1.36	LEVEL
0+50	7.854	7.854	156.397	157.000	0.60	0.60	LEVEL
1+00	23.582	31.416	158.681	157.000	1.68	1.68	F=10.0% L=325.0m
1+50	16.584	50.000	153.407	156.751	3.34	3.34	
2+00	22.257	72.257	156.941	154.774	2.17	2.17	
2+10	17.743	90.000	154.494	153.000	1.49	1.49	
2+20	19.000	109.000	152.521	151.882	0.64	0.64	
2+30	25.307	128.456	150.388	149.154	1.23	1.23	
2+40	21.544	150.000	143.582	147.000	3.42	3.42	
2+50	40.852	190.852	144.798	142.915	1.88	1.88	
2+60	9.148	200.000	---	142.000	1.70	1.70	
2+70	10.000	210.000	142.483	141.000	1.48	1.48	
2+80	27.714	237.714	140.320	138.229	2.09	2.09	
2+90	12.286	250.000	139.170	137.000	2.17	2.17	
3+00	26.506	276.506	136.359	134.319	2.04	2.04	
3+10	20.726	297.232	133.939	132.246	1.69	1.69	
3+20	5.465	300.000	---	132.000	1.44	1.44	
3+30	20.000	320.000	129.428	130.000	0.57	0.57	
3+40	30.000	350.000	131.605	127.000	4.60	4.60	



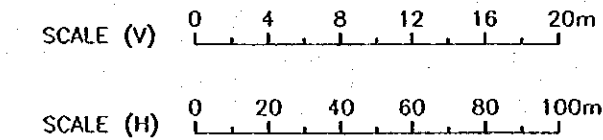
REFERENCE DRAWINGS
 JD-P1-AR-Hr-1 ACCESS ROAD TO HYDROPOWER STATION - PLAN
 JD-P1-AR-Hr-3 ACCESS ROAD TO HYDROPOWER STATION - PROFILE (2/2)

NO.	DATE	REVISIONS	ORIGINATED	DESIGNED	APPROVED

THE REPUBLIC OF INDONESIA MINISTRY OF PUBLIC WORKS DIRECTORATE GENERAL OF WATER RESOURCES DEVELOPMENT AND DIRECTORATE GENERAL OF HUMAN SETTLEMENT		PROVINCE CENTRAL JAVA
JATUNSELUNA FLOOD CONTROL PROJECT COMPONENT : JATIBARANG DAM CONSTRUCTION ACCESS ROAD ACCESS ROAD TO HYDROPOWER STATION PROFILE (1/2)		PROJECT NAME FLOOD CONTROL, URBAN DRAINAGE AND WATER RESOURCE DEVELOPMENT IN SEMARANG IN THE REPUBLIC OF INDONESIA
JAPAN INTERNATIONAL COOPERATION AGENCY CIL ENGINEERING CO., LTD. IN ASSOCIATION WITH PACIFIC CONSULTANTS INTERNATIONAL PACO INTERNATIONAL INC.		DISTRICT SEMARANG CITY
DESIGNED CHECKED CHIEF OF PLANNING AND DESIGN PROJECT MANAGER	DATE 	CONTRACT NO.



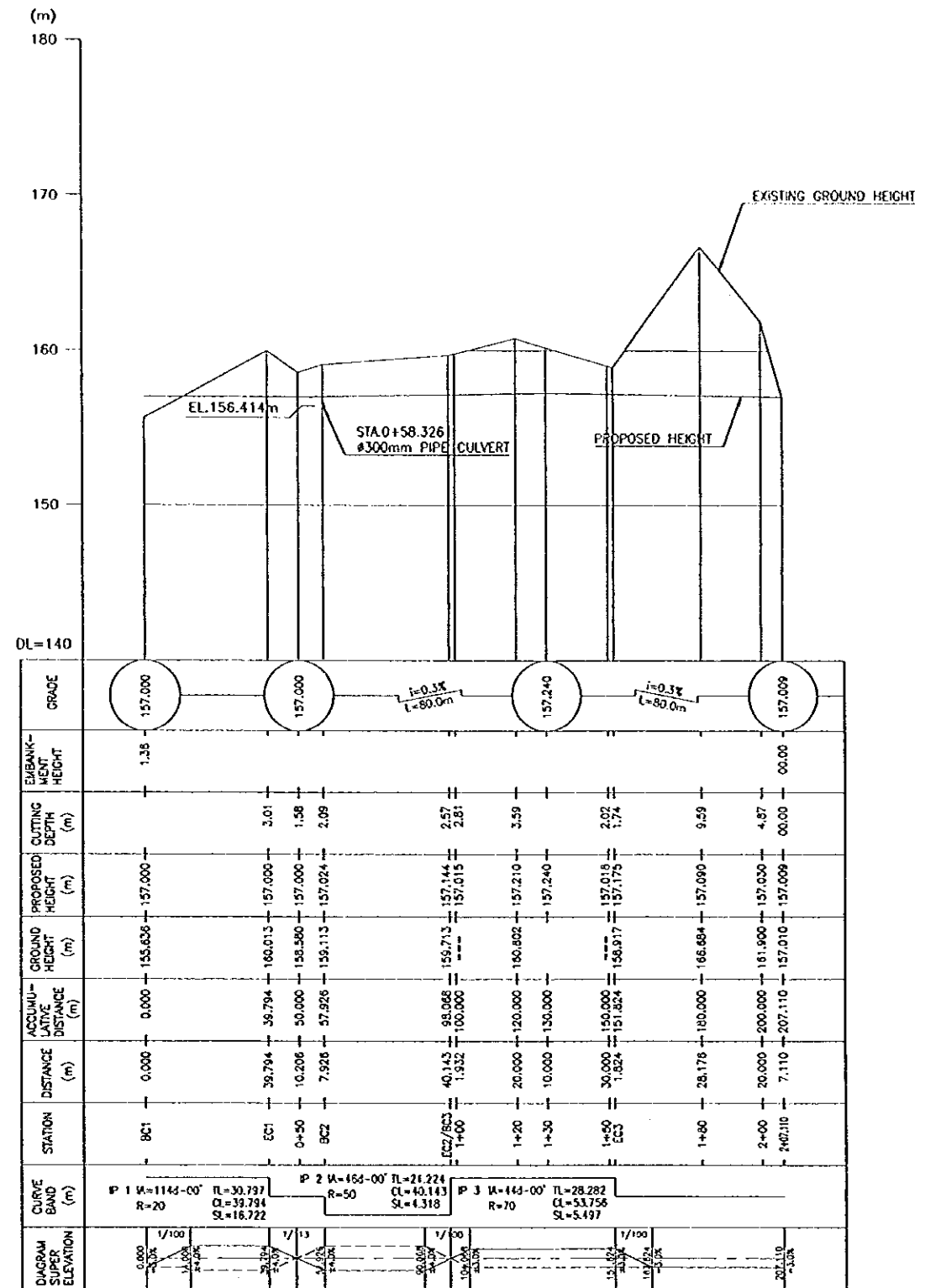
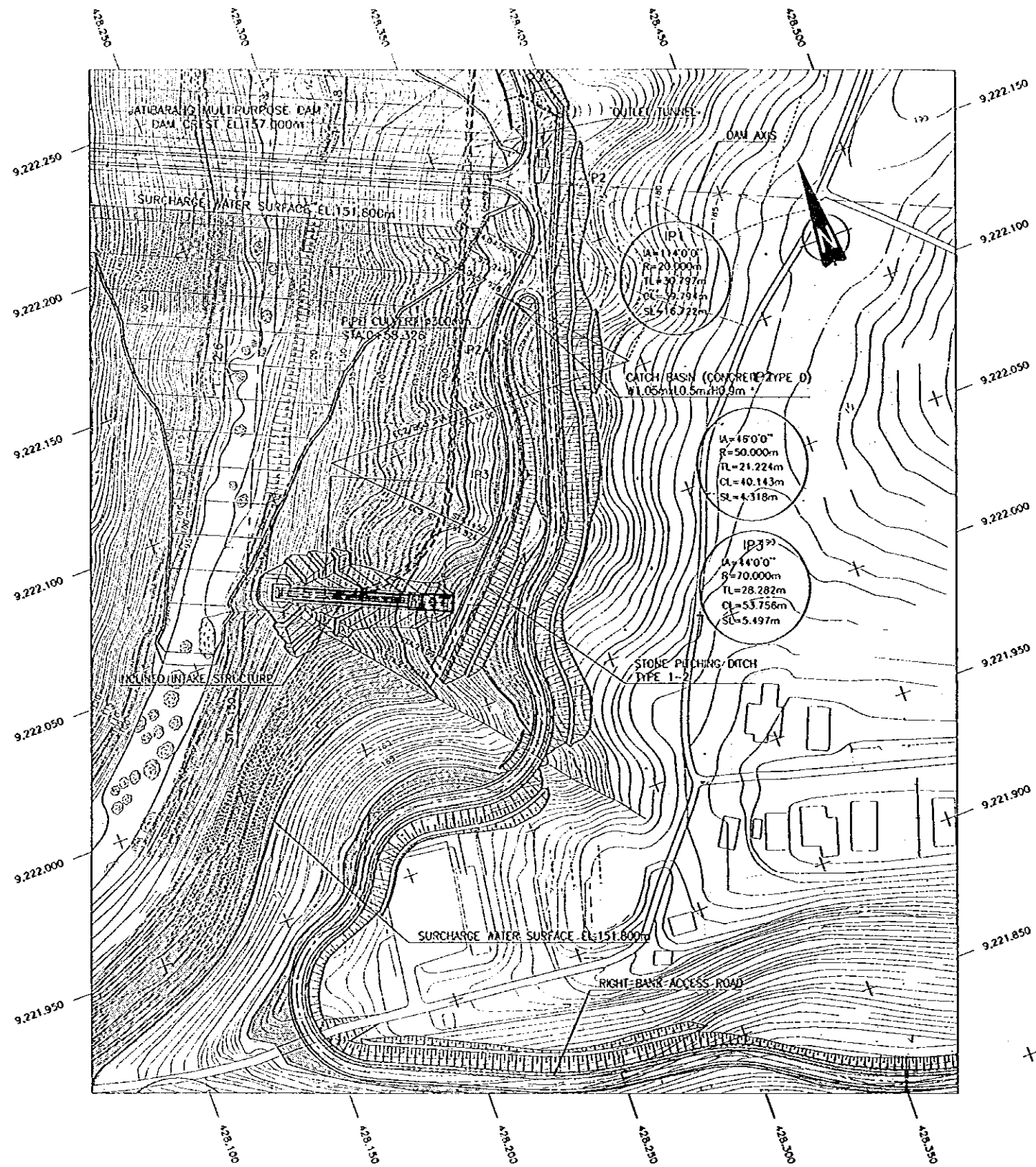
STATION	DISTANCE (m)	ACCUMULATIVE DISTANCE (m)	GROUND HEIGHT (m)	PROPOSED HEIGHT (m)	CUTTING DEPTH (m)	EMBANKMENT HEIGHT (m)	GRADE
3+50	30.000	350.000	131.068	127.000	4.00		124.500
3+75	25.000	375.000		124.512	6.20		
3+75	21.705	396.705	128.946	122.438	7.51		
3+75	3.295	400.000		122.125	6.75		
4+10	10.000	410.000	125.558	121.175	4.38		
4+10	8.896	418.896	123.150	120.349	2.80		
4+10	0.912	419.808	122.945	120.282	2.66		
4+50	30.391	450.200	121.296	117.375	3.92		
4+50	12.875	463.075	122.330	116.171	6.17		
4+50	21.991	485.066	120.201	114.002	6.12		
4+50	20.334	505.400	115.349	112.136	3.21		
4+50	29.408	534.808	113.074	109.209	3.85		
4+50	15.592	550.400	111.982	107.650	4.33		
4+50	25.492	575.892	116.143	105.101	11.04		
4+50	21.458	597.350	111.475	102.954	8.52		
4+50	1.041	606.000		102.850	8.35		
4+50	10.000	616.000	108.000	101.650	6.35		
4+50	18.113	634.113	113.000	99.839	13.23		
4+50	21.307	655.420	106.507	97.680	8.83		
4+50	6.500	661.920		97.249	4.86		
4+50	11.064	672.984	94.810	97.000	2.19		
4+50	12.436	685.420	83.558	97.000	13.44		



REFERENCE DRAWINGS
 JD-P1-AR-Hr-1 ACCESS ROAD TO HYDROPOWER STATION - PLAN
 JD-P1-AR-Hr-2 ACCESS ROAD TO HYDROPOWER STATION - PROFILE (1/2)

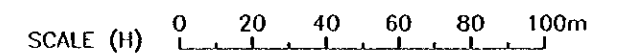
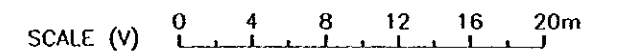
NO.	DATE	REVISIONS	PROPOSED	DESIGNED	APPROVED

	TBK REPUBLIC OF INDONESIA MINISTRY OF PUBLIC WORKS DIRECTORATE GENERAL OF WATER RESOURCES DEVELOPMENT AND DIRECTORATE GENERAL OF HUMAN SETTLEMENT		PROVINCE CENTRAL JAVA
	PROJECT NAME FLOOD CONTROL, URBAN DRAINAGE AND WATER RESOURCES DEVELOPMENT IN SEMARANG IN THE REPUBLIC OF INDONESIA		DISTRICT SEMARANG CITY
PROJECT COMPONENT : JATIBARANG DAM CONSTRUCTION ACCESS ROAD ACCESS ROAD TO HYDROPOWER STATION PROFILE (2/2)			DRAWING NO. JD-P1-AR-Hr-3 SHEET NO. 274
JAPAN INTERNATIONAL COOPERATION AGENCY CTE ENGINEERING CO., LTD. IN ASSOCIATION WITH PACIFIC CONSULTANTS INDONESIA SURABAYA JACO INTERNATIONAL INC.		DESIGNED CHECKED APPROVED	DATE CONTRACT NO.
CHIEF OF PLANNING AND DESIGN PROJECT MANAGER			

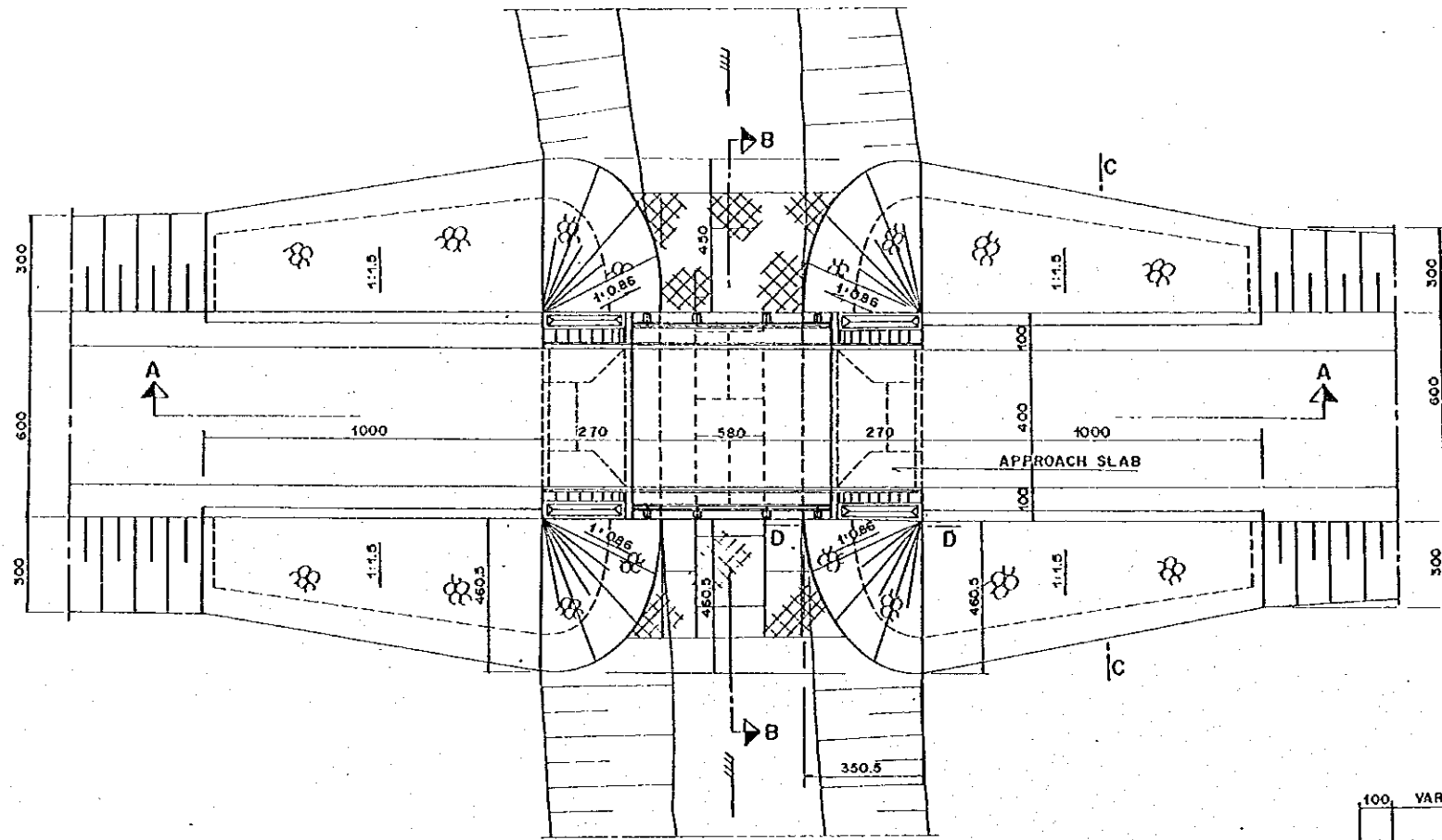


REFERENCE DRAWINGS

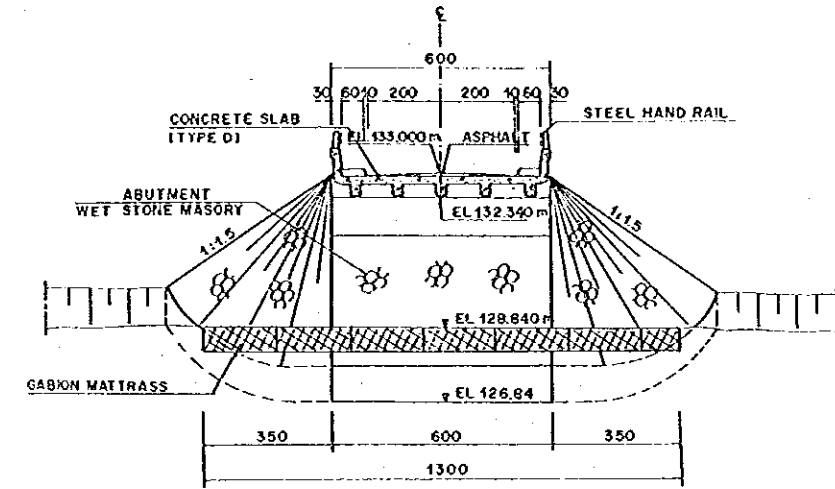
JD-P1-AR-Ce-1 HORIZONTAL ALIGNMENT AND LAYOUT DATA (1/2)



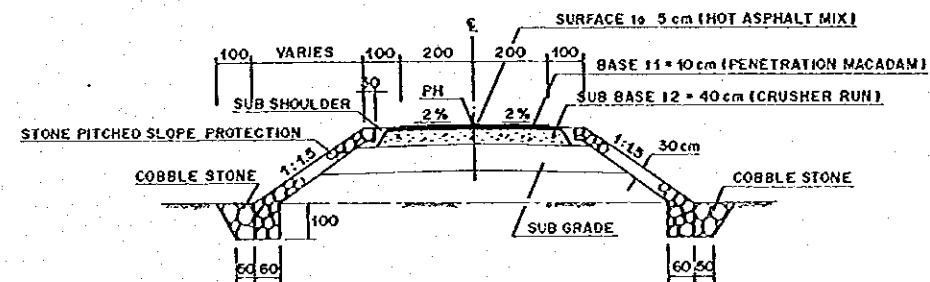
THE REPUBLIC OF INDONESIA MINISTRY OF PUBLIC WORKS DIRECTORATE GENERAL OF WATER RESOURCES DEVELOPMENT AND DIRECTORATE GENERAL OF HUMAN SETTLEMENT			CENTRAL JAVA PROJECT NAME FLOOD CONTROL, URBAN DRAINAGE AND WATER RESOURCES DEVELOPMENT IN SEMARANG IN THE REPUBLIC OF INDONESIA DISTRICT SEMARANG CITY DRAWING NO. JD-P1-AR-W-1 SHEET NO. 275 DATE CONTRACT NO.		
JAPAN INTERNATIONAL COOPERATION AGENCY CEL ENGINEERING CO., LTD. IN ASSOCIATION WITH PACIFIC CONSULTANTS INTERNATIONAL PACIFIC INTERNATIONAL INC.			DESIGNED	CHECKED	APPROVED
CHIEF OF PLANNING AND DESIGN			PRODUCT MANAGER		



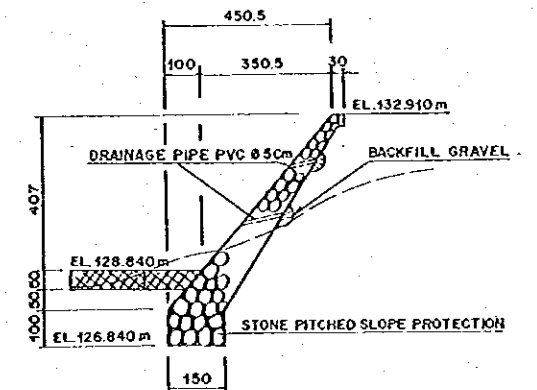
PLAN
SCALE A



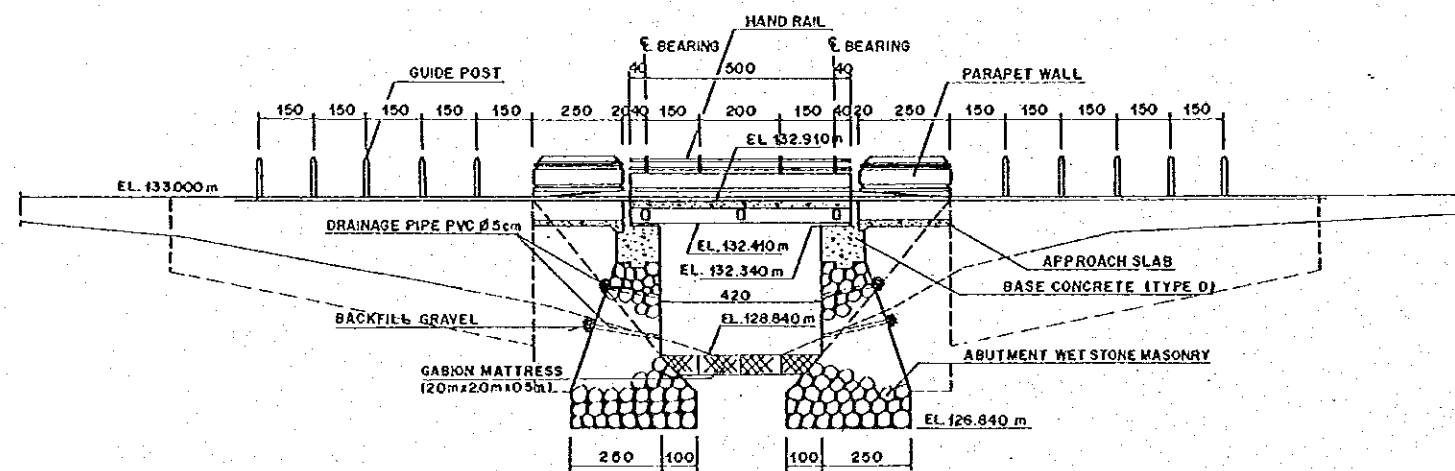
SECTION B-B
SCALE A



SECTION C-C
SCALE A



SECTION D-D
SCALE A



SECTION A-A
SCALE A

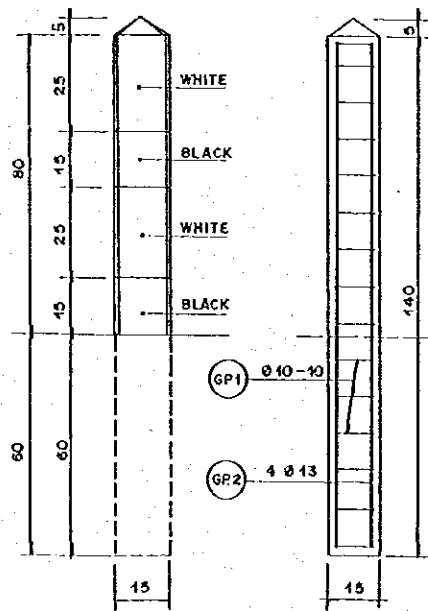
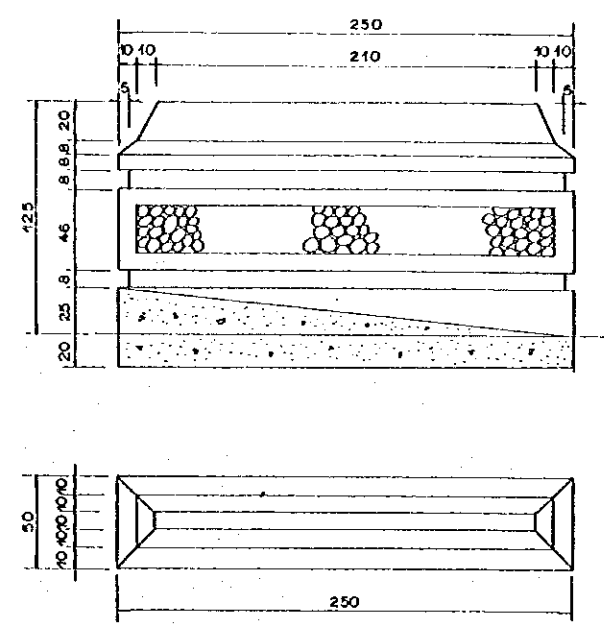
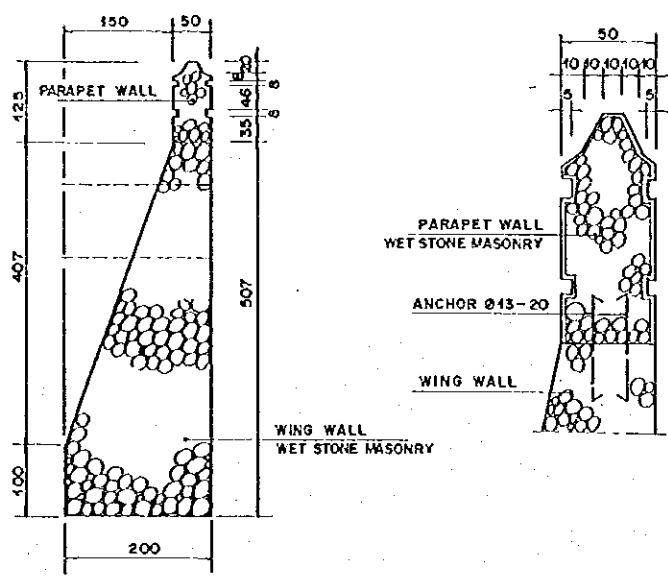
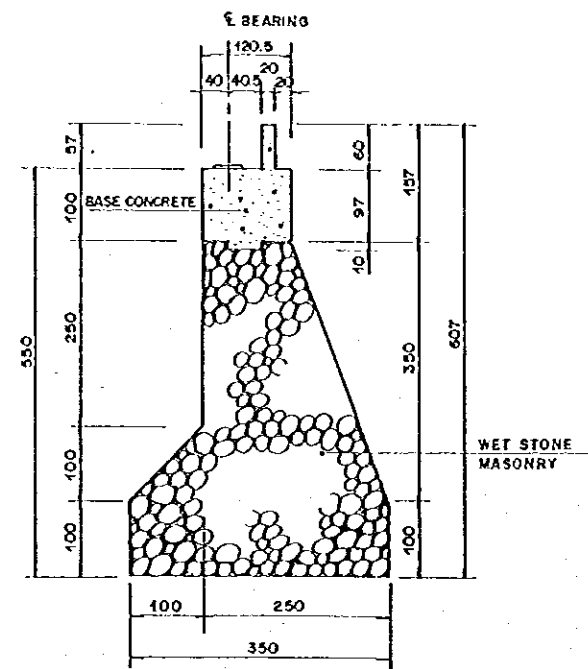
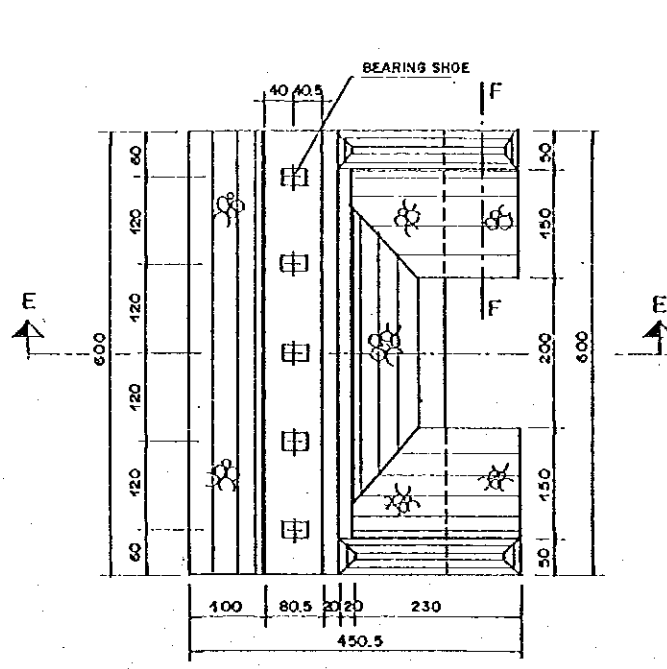
NOTES

1. UNIT IN CENTIMETER
2. CONCRETE QUALITY FOR BEAM, SLAB AND DIAPHRAGM (TYPE D)

SCALE A 0 50 100m

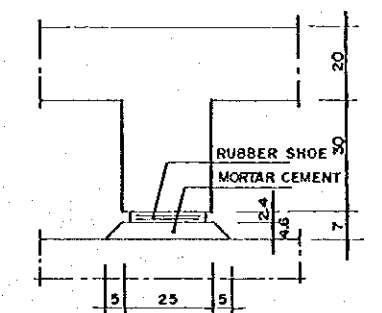
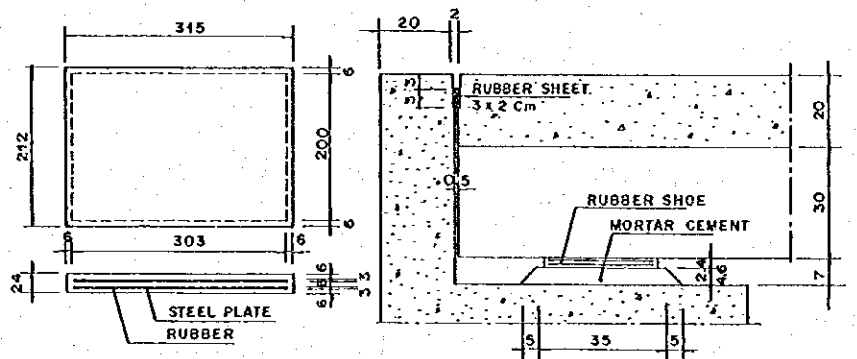
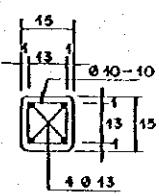
NO.	DATE	REVISIONS	ASSOCIATED	DESIGNED	APPROVED

THE REPUBLIC OF INDONESIA MINISTRY OF PUBLIC WORKS DIRECTORATE GENERAL OF WATER RESOURCES DEVELOPMENT AND DIRECTORATE GENERAL OF HUMAN SETTLEMENT		PROVINCE CENTRAL JAVA
PRATUNSEJUNA FLOOD CONTROL PROJECT COMPONENT : JATIBARANG DAM CONSTRUCTION ACCESS ROAD SIWARAK BRIDGE PLAN AND SECTION		PROJECT NAME FLOOD CONTROL, URBAN DRAINAGE AND WATER RESOURCES DEVELOPMENT IN SEMARANG IN THE REPUBLIC OF INDONESIA CONTACT SEMARANG CITY
WAJAN INTERNATIONAL COOPERATION AGENCY C/O BERSHEDAH CO., LTD. 9th FLOOR/9th WING PACIFIC COMMERCE INTERNATIONAL TOWER INTERNATIONAL INC.	DESIGNED CHECKED CHIEF OF PLANNING AND DESIGN PROJECT MANAGER	DRAWING NO. JD-PI-AR-B7-1 SHEET NO. 276 DATE CONTRACT NO.

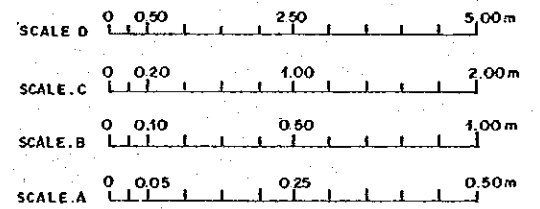


LIST OF REINFORCING BAR FOR GUIDE POST

NO	Ø (mm)	TYPE	LENGTH (m)	UNIT (Kg/m)	NUMBER	TOTAL WEIGHT (Kg)	REMARKS
GP.1	13	A	1,35	1.04	4 x 20	112.32	
GP.2	10	B	0,48	0.617	15 x 20	93	
TOTAL						205 Kg	



- NOTES
1. UNIT IN CETIMETER EXCEPT REINFORCING BAR AND BEARING SHOE
 2. CONCRETE QUALITY FOR BASE CONCRETE (TYPE D)
 3. STEEL QUALITY BJ 32
 4. CONCRETE COVER MINIMUM 20 mm



NO.	DATE	REVISIONS	QUANTIFIED	DESIGNED	APPROVED

THE REPUBLIC OF INDONESIA
 MINISTRY OF PUBLIC WORKS
 DIRECTORATE GENERAL OF WATER RESOURCES DEVELOPMENT AND DIRECTORATE GENERAL OF HUMAN SETTLEMENTS
 IRATUNSELUNA FLOOD CONTROL PROJECT
 COMPONENT: JATIBARANG DAM CONSTRUCTION
 ACCESS ROAD
 SIWARAK BRIDGE
 ABUTMENT PARAPET WALL AND GUIDEPOST

PROVINCE: CENTRAL JAVA
 PROJECT NAME: FLOOD CONTROL, URBAN DRAINAGE AND WATER RESOURCES DEVELOPMENT IN SEMARANG IN THE REPUBLIC OF INDONESIA
 DISTRICT: SEMARANG CITY
 DRAWING NO. JO-P1-AR-Br-2
 SHEET NO. 277

DATE: _____ CONTRACT NO.: _____

DESIGNED: _____
 CHECKED: _____
 APPROVED: _____
 PROJECT MANAGER: _____