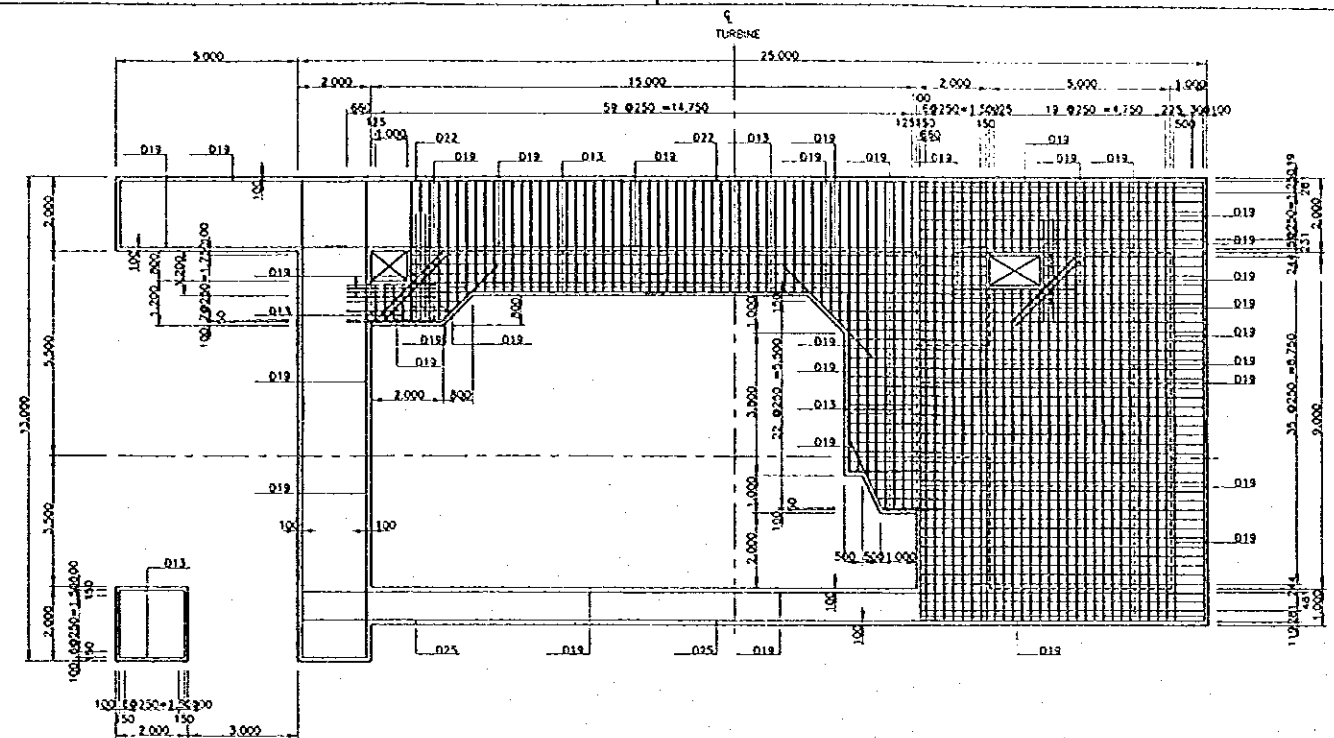
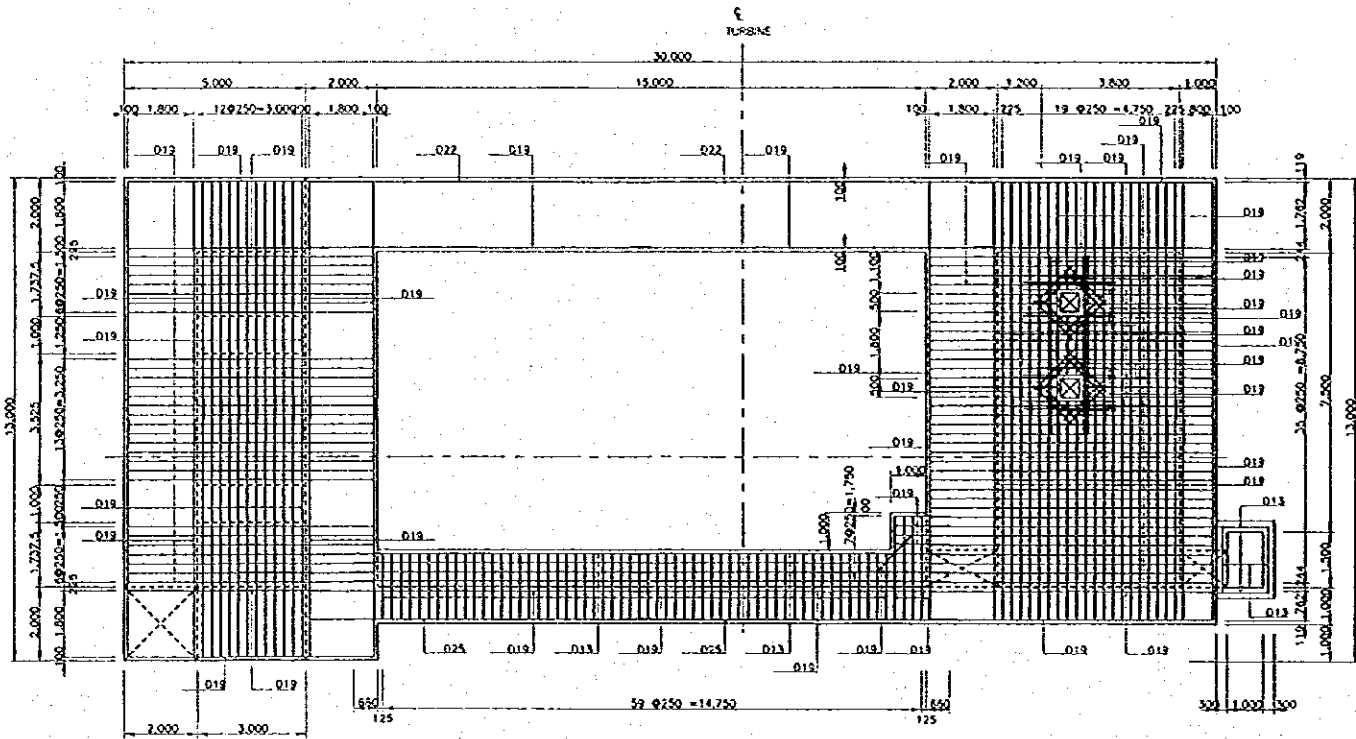


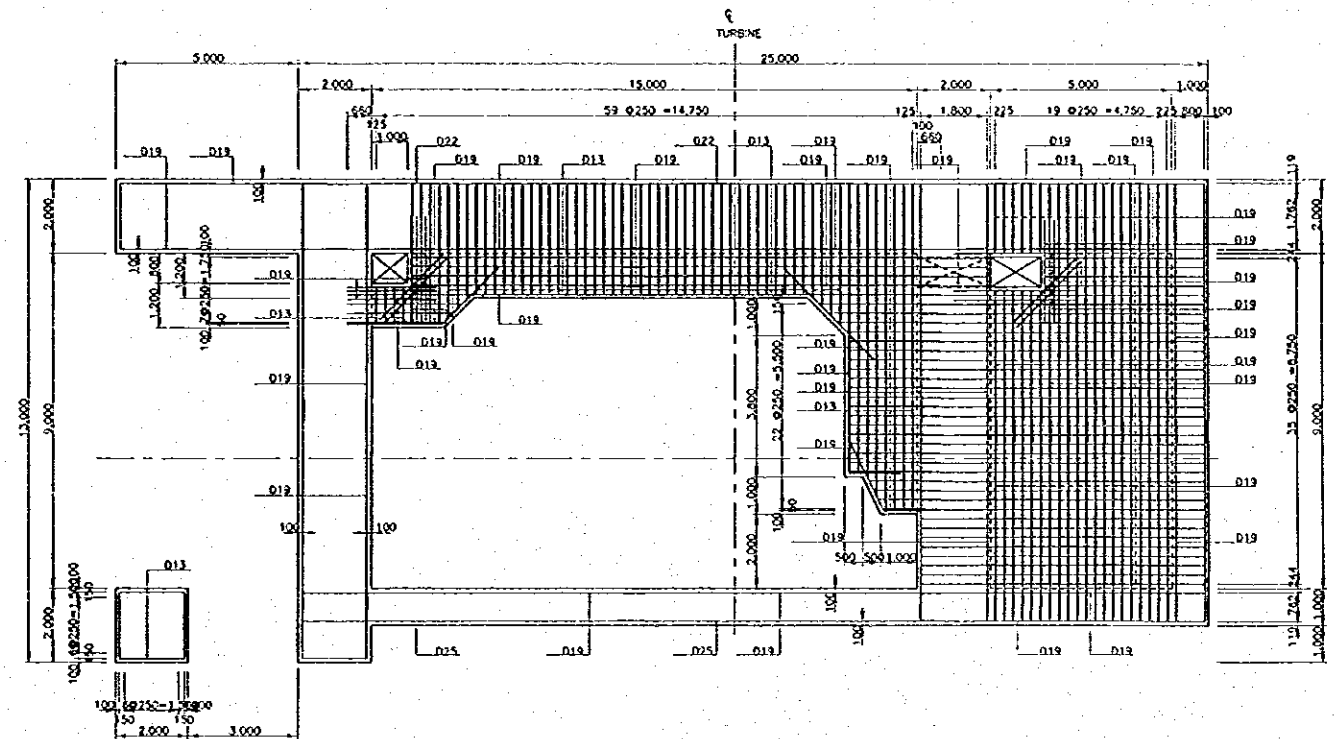
EL.97.500 FLOOR (TOP)



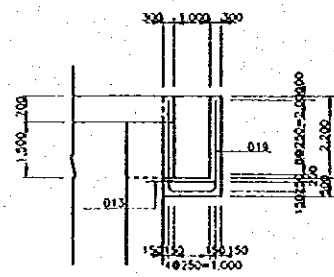
EL.93.000 FLOOR (TOP)



EL.97.500 FLOOR (BOTTOM)

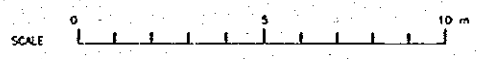
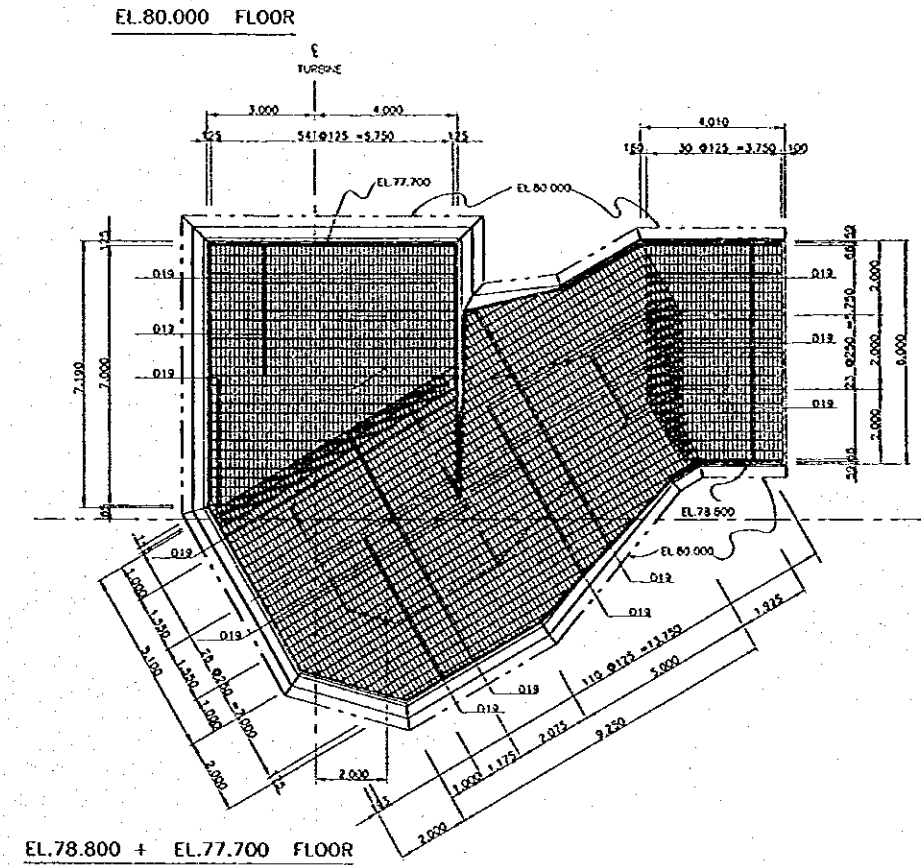
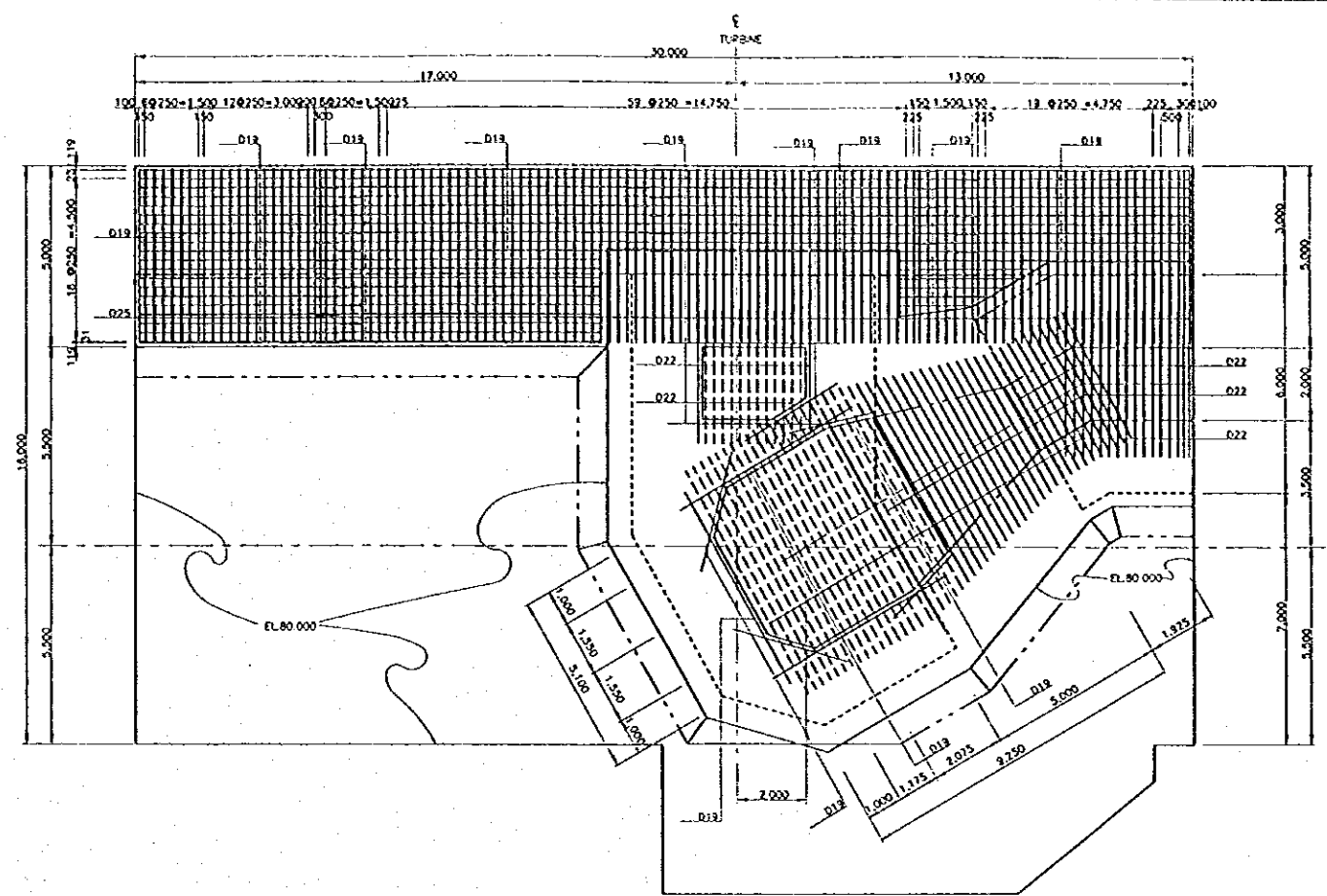
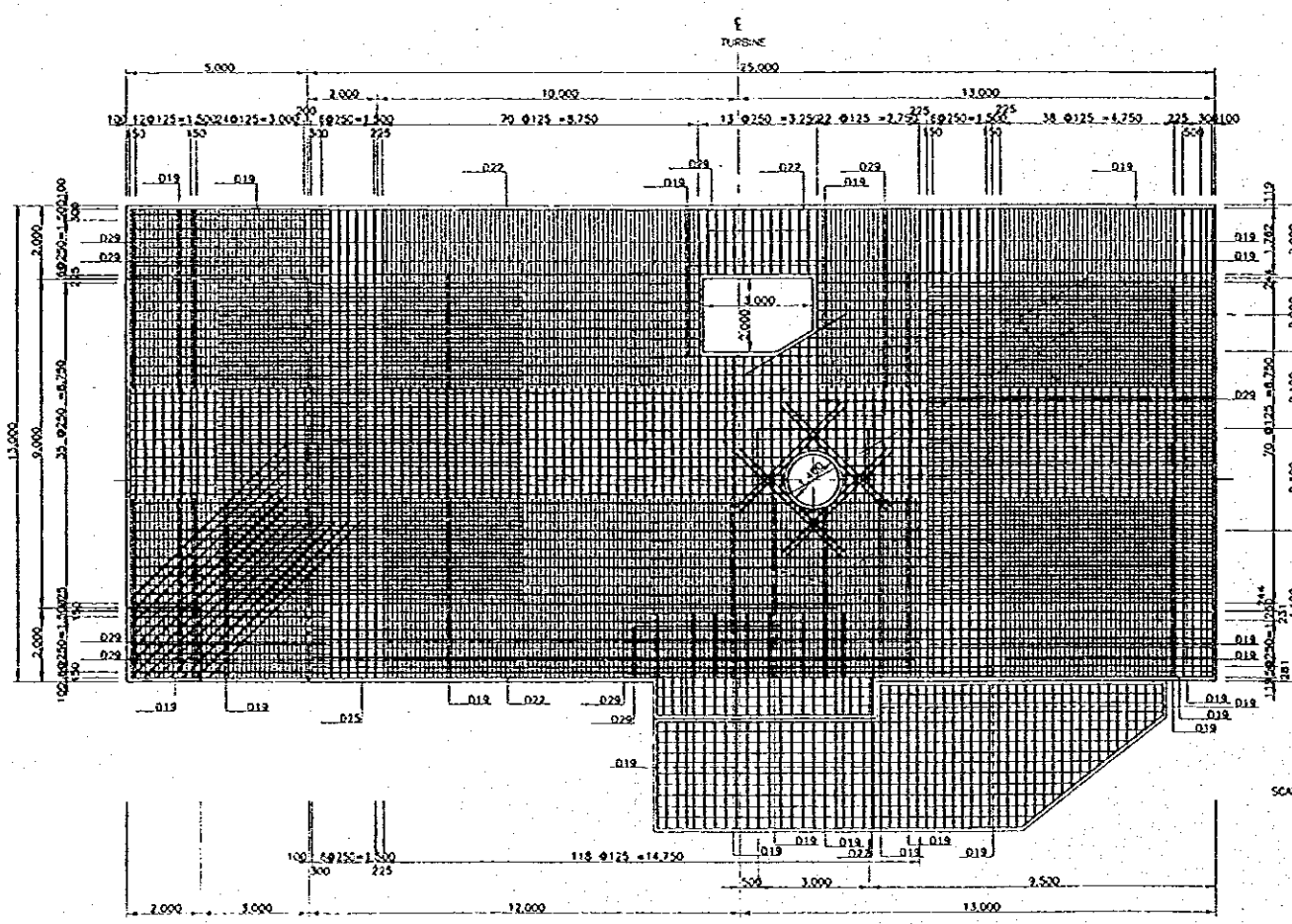
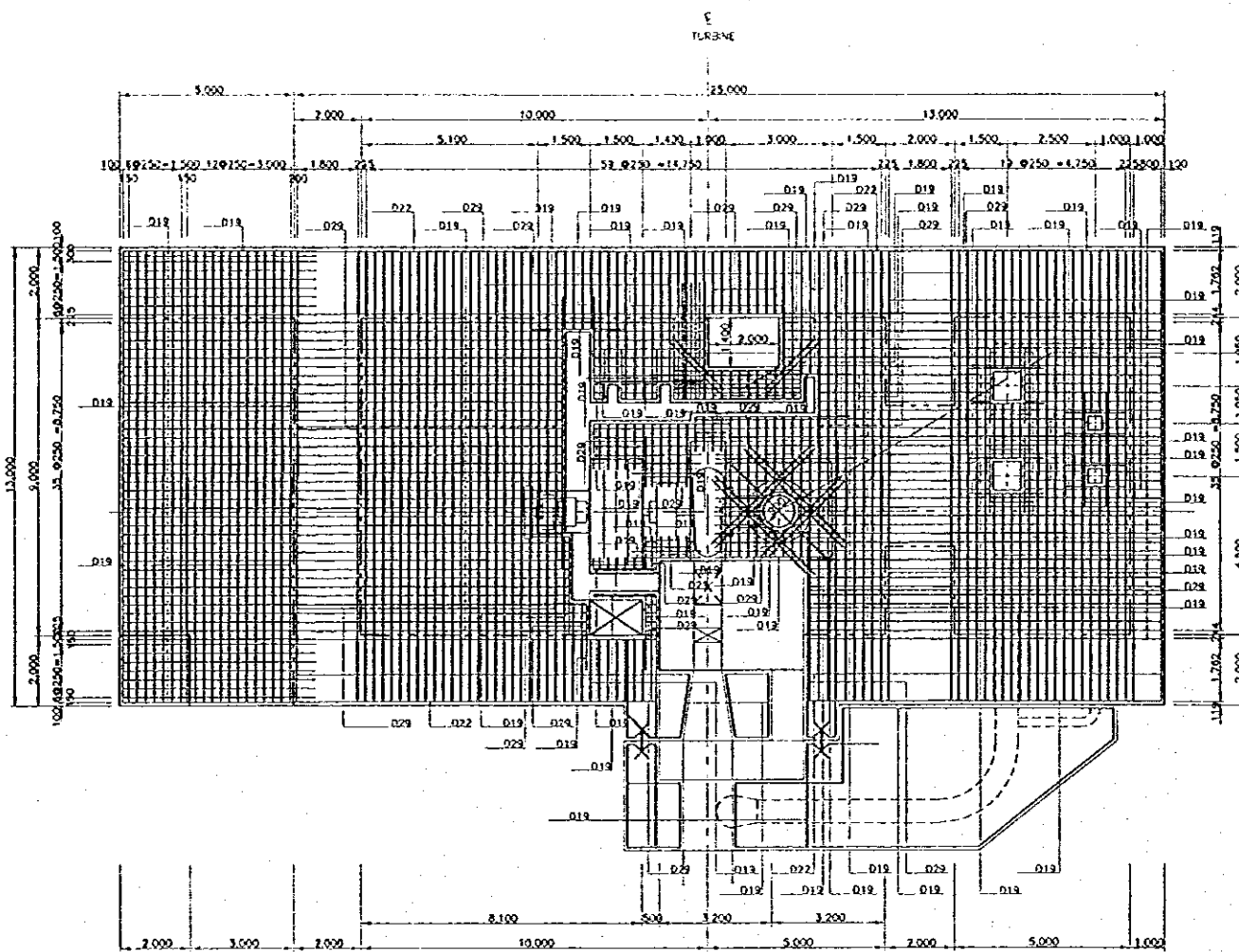


EL.93.000 FLOOR (BOTTOM)



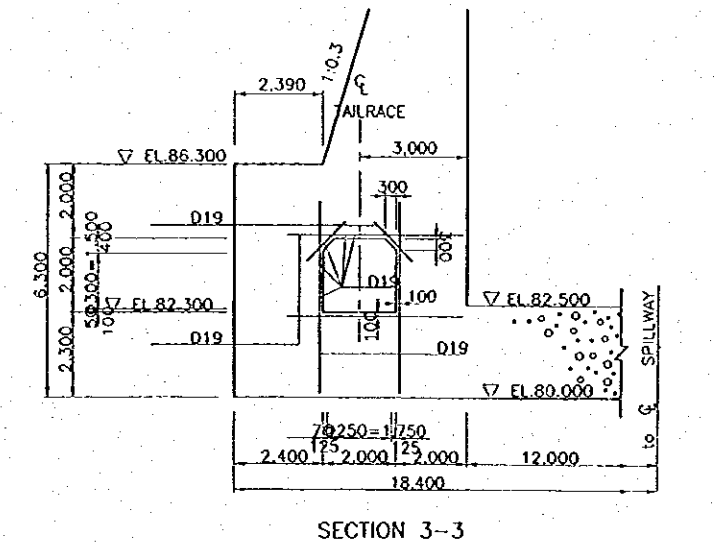
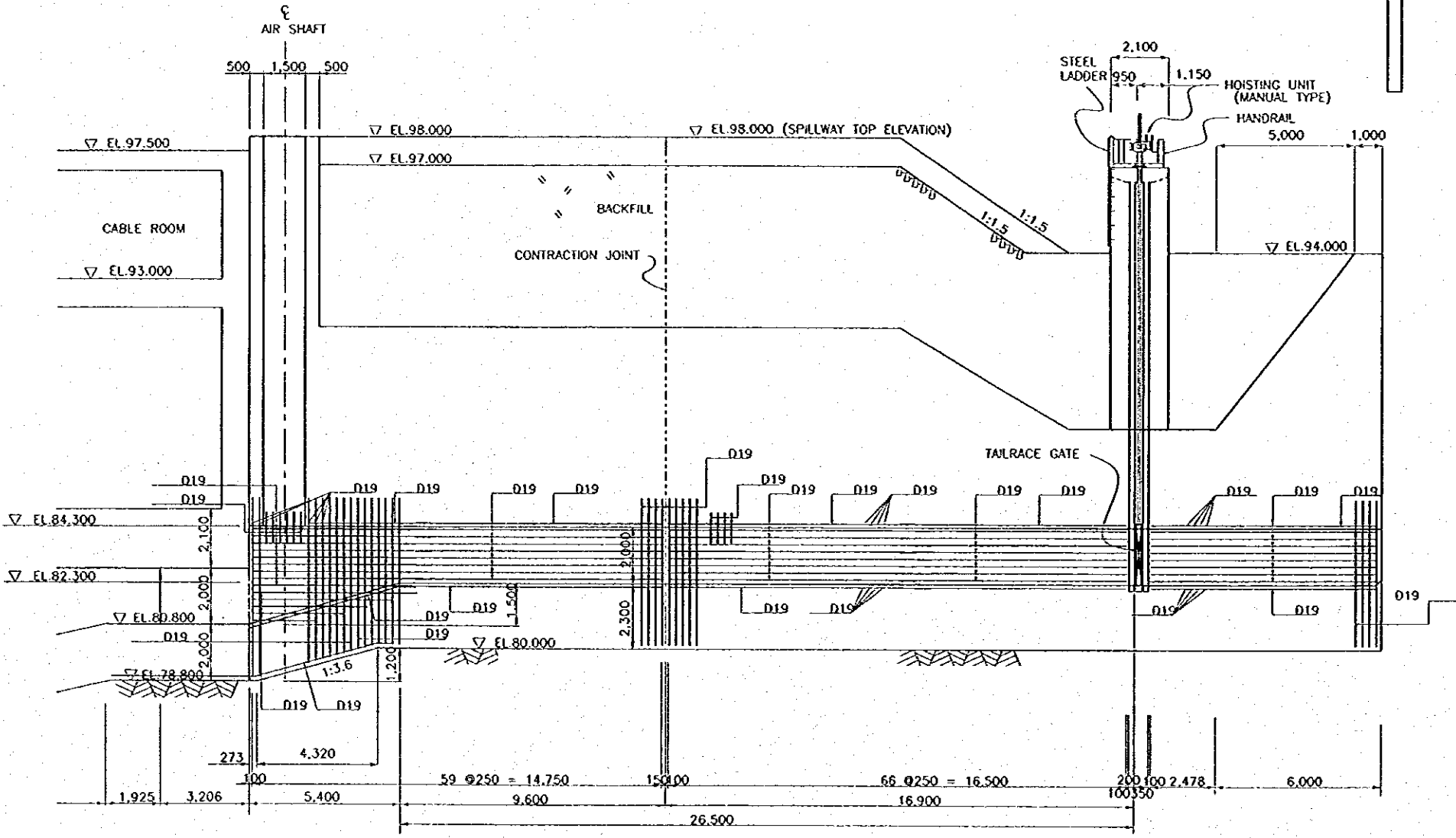
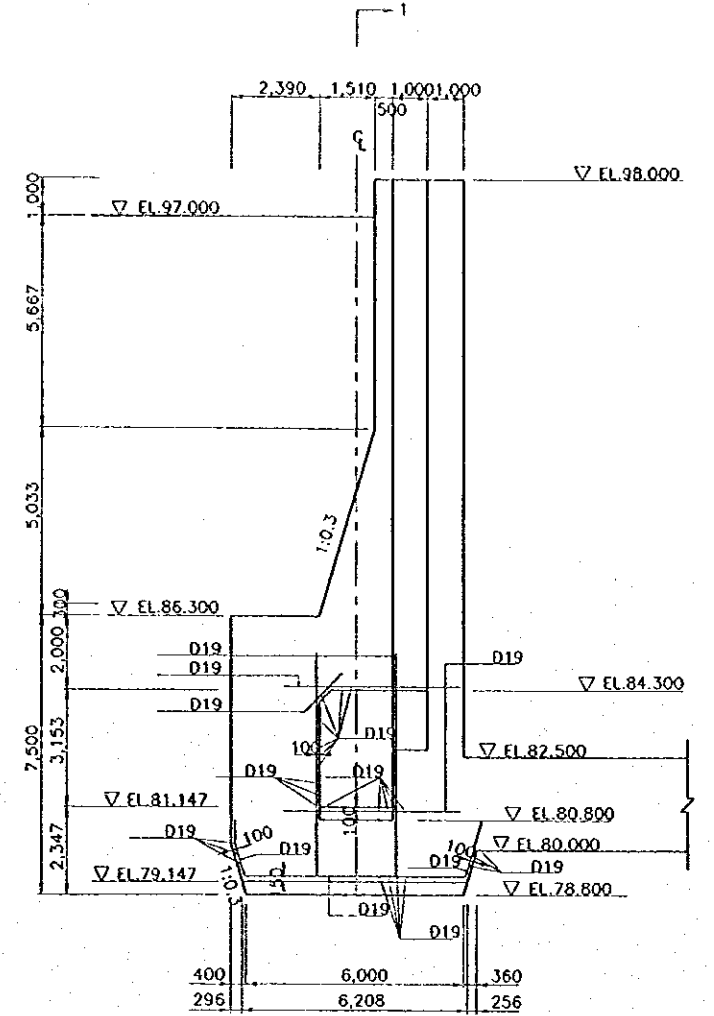
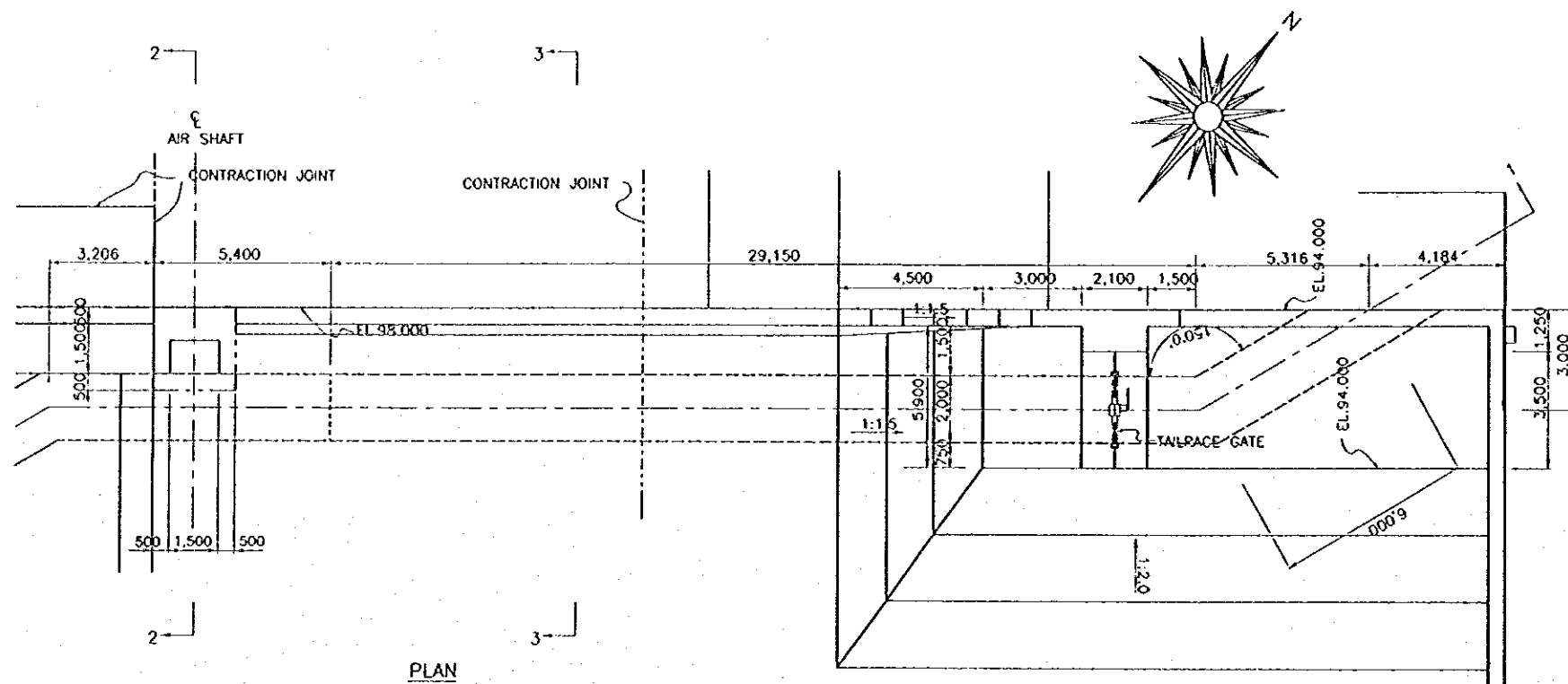
NO.	DATE	REVISIONS	ORIGINATED	DESIGNED	APPROVED

THE REPUBLIC OF INDONESIA MINISTRY OF PUBLIC WORKS DIRECTORATE GENERAL OF WATER RESOURCES DEVELOPMENT AND DIRECTORATE GENERAL OF HUMAN SETTLEMENT		PROVIDER CENTRAL JAVA
PRATUNSELUNA FLOOD CONTROL PROJECT COMPONENT: JATIBARANG DAM CONSTRUCTION HYDROPOWER STATION POWERHOUSE REINFORCEMENT PLAN (1/2)		PROJECT NAME FLOOD CONTROL, URBAN DRAINAGE AND WATER RESOURCES DEVELOPMENT IN SEMARANG IN THE REPUBLIC OF INDONESIA
LAPAN INTERNATIONAL COOPERATION AGENCY CIVIL ENGINEERING CO., LTD. IN ASSOCIATION WITH PACIFIC CONSULTANTS INTERNATIONAL PANGO INTERNATIONAL INC.		DISTRICT SEMARANG CITY
DESIGNED <i>Journe</i>	CHECKED <i>[Signature]</i>	DRAWING NO. JD-P1-HS-Re-5 SHEET NO. 203
CHIEF OF PLANNING AND DESIGN PROJECT MANAGER		DATE CONTRACT NO.



NO.	DATE	REVISIONS	ORIGINATOR	DESIGNED	APPROVED

	THE REPUBLIC OF INDONESIA MINISTRY OF PUBLIC WORKS DIRECTORATE GENERAL OF WATER RESOURCES DEVELOPMENT AND DIRECTORATE GENERAL OF HUMAN SETTLEMENT	PROVINCE CENTRAL JAVA
	IRATUNSELUNA FLOOD CONTROL PROJECT COMPONENT : JATIBARANG DAM CONSTRUCTION POWERHOUSE REINFORCEMENT PLAN (2/2)	PROJECT NAME FLOOD CONTROL, URBAN DRAINAGE AND WATER RESOURCES DEVELOPMENT IN SEMARANG IN THE REPUBLIC OF INDONESIA DISTRICT SEMARANG CITY
JAPAN INTERNATIONAL COOPERATION AGENCY CHUO ENGINEERING CO., LTD. IN ASSOCIATION WITH PACIFIC GENERAL CONTRACTORS INTERNATIONAL PANCO INTERNATIONAL, INC.	DESIGNED T. SURE CHIEF OF PLANNING AND DESIGN PROJECT MANAGER	DRAWING NO. JO-P1-NS-RP-6 SHEET NO. 204 DATE CONTRACT NO.

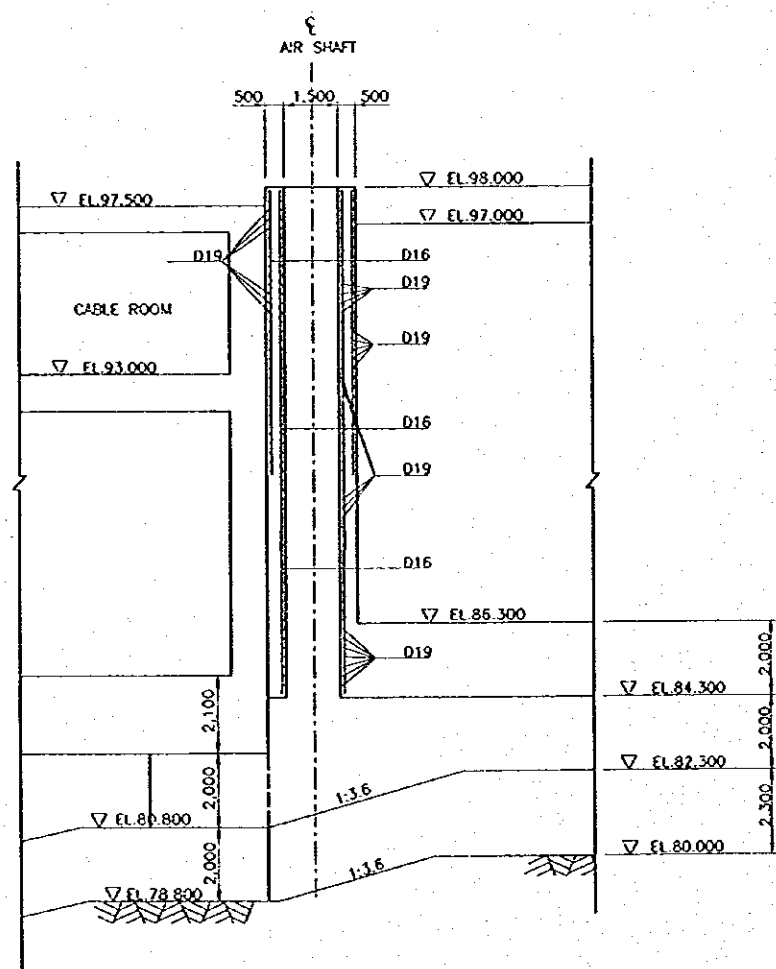
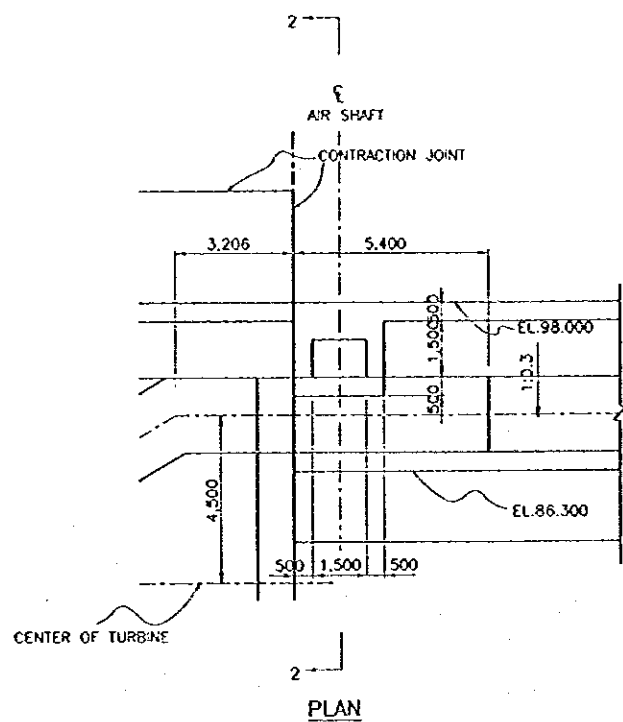


NOTES  
1. THIS DRAWING SHOWS THE REINFORCEMENT FOR THE TAILRACE

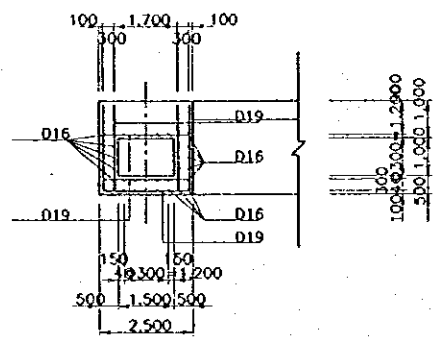
SCALE 0 5 10 m

NO.	DATE	REVISIONS	ORIGINATED	DESIGNED	APPROVED

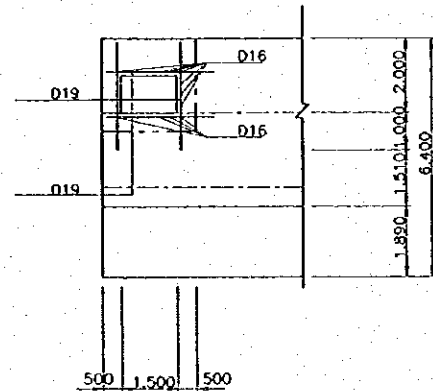
THE REPUBLIC OF INDONESIA MINISTRY OF PUBLIC WORKS DIRECTORATE GENERAL OF WATER RESOURCES DEVELOPMENT AND DIRECTORATE GENERAL OF HUMAN SETTLEMENT JATUNSELONA FLOOD CONTROL PROJECT COMPONENT : JATIBARANG DAM CONSTRUCTION <b>HYDROPOWER STATION          TAILRACE          REINFORCEMENT SECTIONS</b>		PROVIDER CENTRAL JAWA PROJECT NAME FLOOD CONTROL, URBAN DRAINAGE AND WATER RESOURCES DEVELOPMENT IN SEMARANG IN THE REPUBLIC OF INDONESIA DISTRICT SEMARANG CITY DRAWING NO. JD-P1-HS-Rs-7 SHEET NO. 205 DATE CONTRACT NO.
LAYAN INTERNATIONAL COOPERATION AGENCY PT INDOENGGING CO., LTD. IN ASSOCIATION WITH PACIFIC CONSULTANTS INTERNATIONAL PACIFIC INTERNATIONAL INC. CHIEF OF PLANNING AND DESIGN PROJECT MANAGER	DESIGNED CHECKED 	DATE 



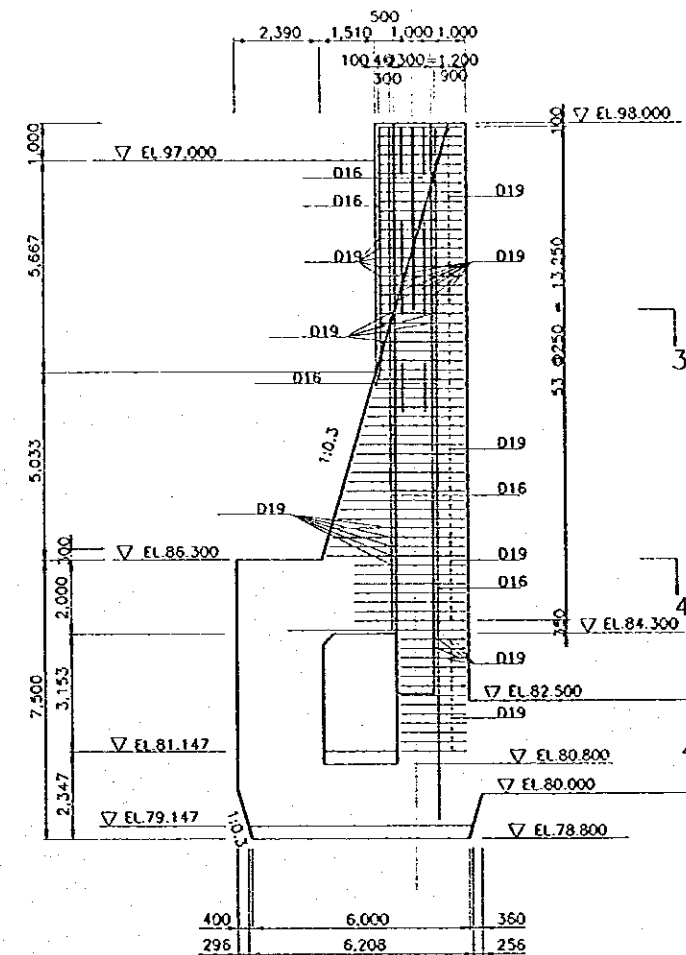
SECTION 1-1



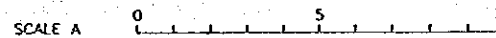
SECTION 3-3



SECTION 4-4



SECTION 2-2

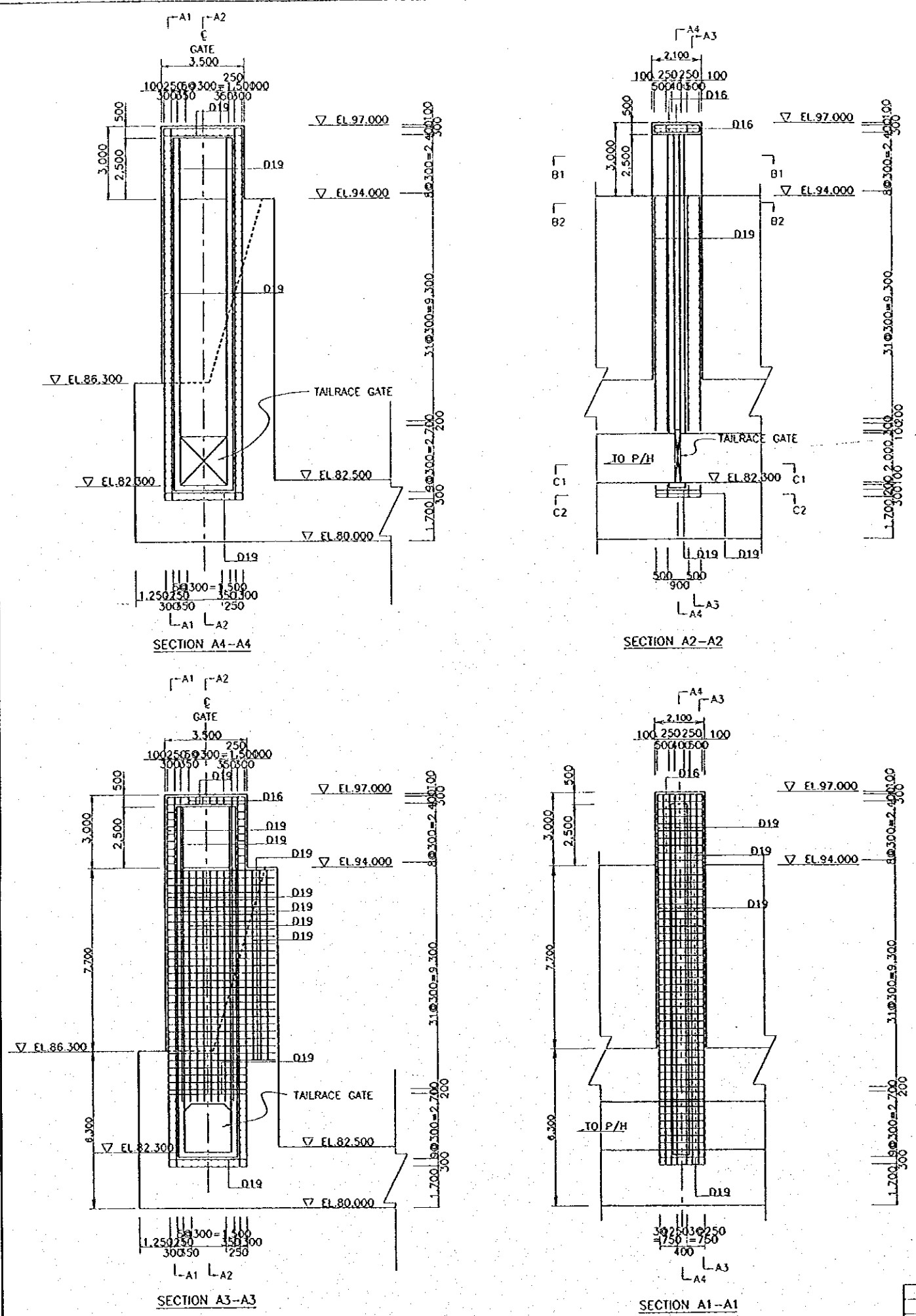


NOTES

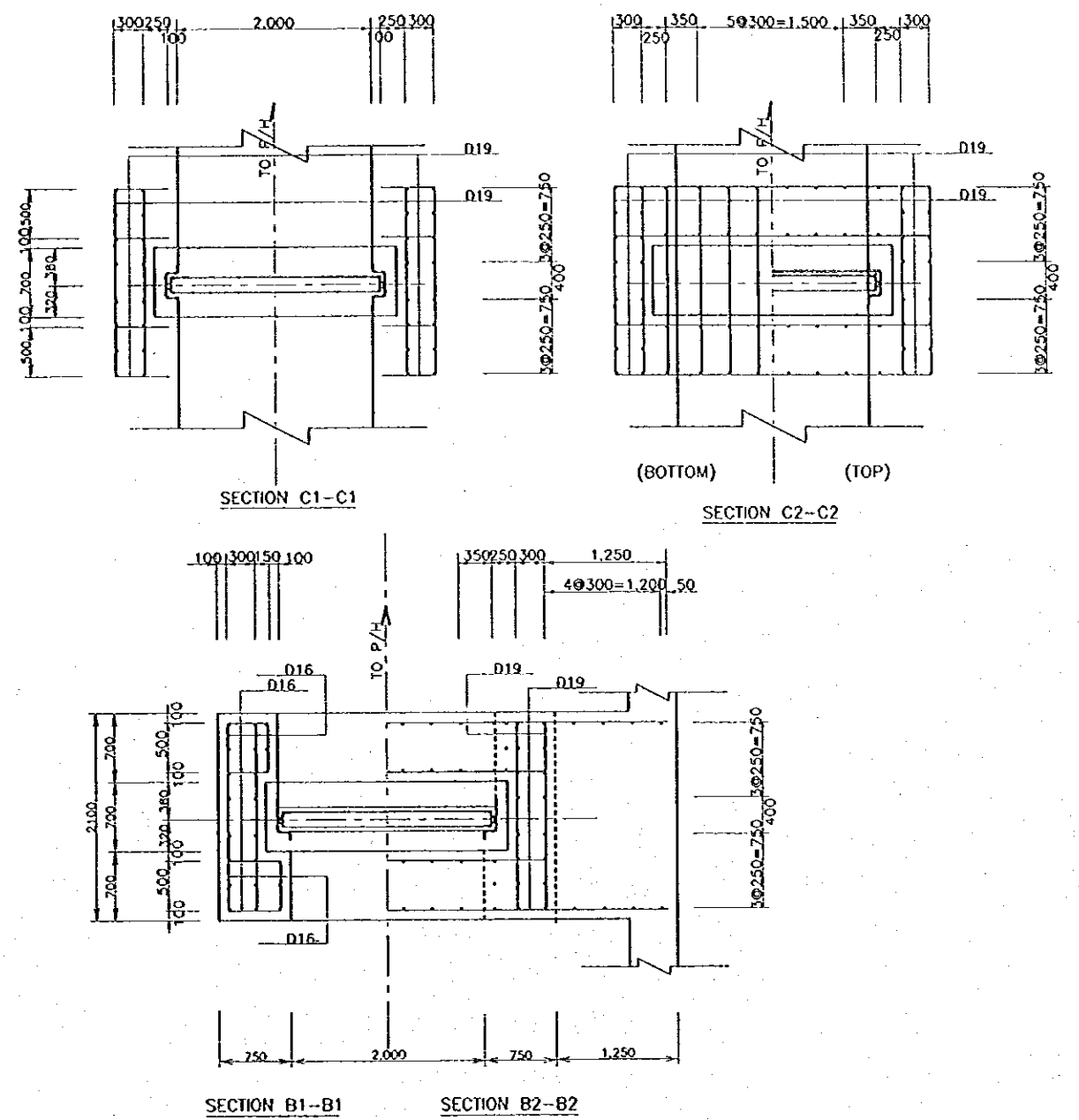
1. THIS DRAWING SHOWS THE REINFORCEMENT FOR THE AIR SHAFT

NO.	DATE	REVISIONS	ORIGINATED	DESIGNED	APPROVED

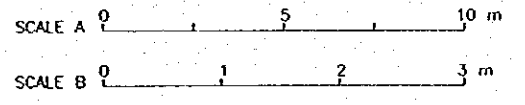
<b>THE REPUBLIC OF INDONESIA</b> MINISTRY OF PUBLIC WORKS DIRECTORATE GENERAL OF WATER RESOURCES DEVELOPMENT AND DIRECTORATE GENERAL OF HUMAN SETTLEMENT		PROVINCE CENTRAL JAVA
IRATUNSELUNA FLOOD CONTROL PROJECT COMPONENT : JATIBARANG DAM CONSTRUCTION HYDROPOWER STATION AIRSHAFT REINFORCEMENT SECTIONS		PROJECT NAME FLOOD CONTROL, URBAN DRAINAGE AND WATER RESOURCES DEVELOPMENT IN IRIRANGAN IN THE REPUBLIC OF INDONESIA
PT. JAWA INTERNATIONAL CORPORATION PT. JAWA INTERNATIONAL CORPORATION PT. JAWA INTERNATIONAL CORPORATION		DISTRICT SEMARANG CITY
CHIEF OF PLANNING AND DESIGN PROJECT MANAGER		DRAWING NO. J0-P1-HS-Re-8 SHEET NO. 206 DATE CONTRACT NO.



PROFILE AND SECTION OF TAILRACE GATE TOWER  
SCALE A



TAILRACE GATE  
SCALE B



REFERENCE DRAWINGS

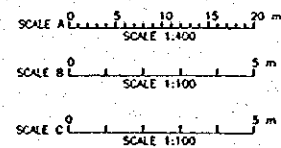
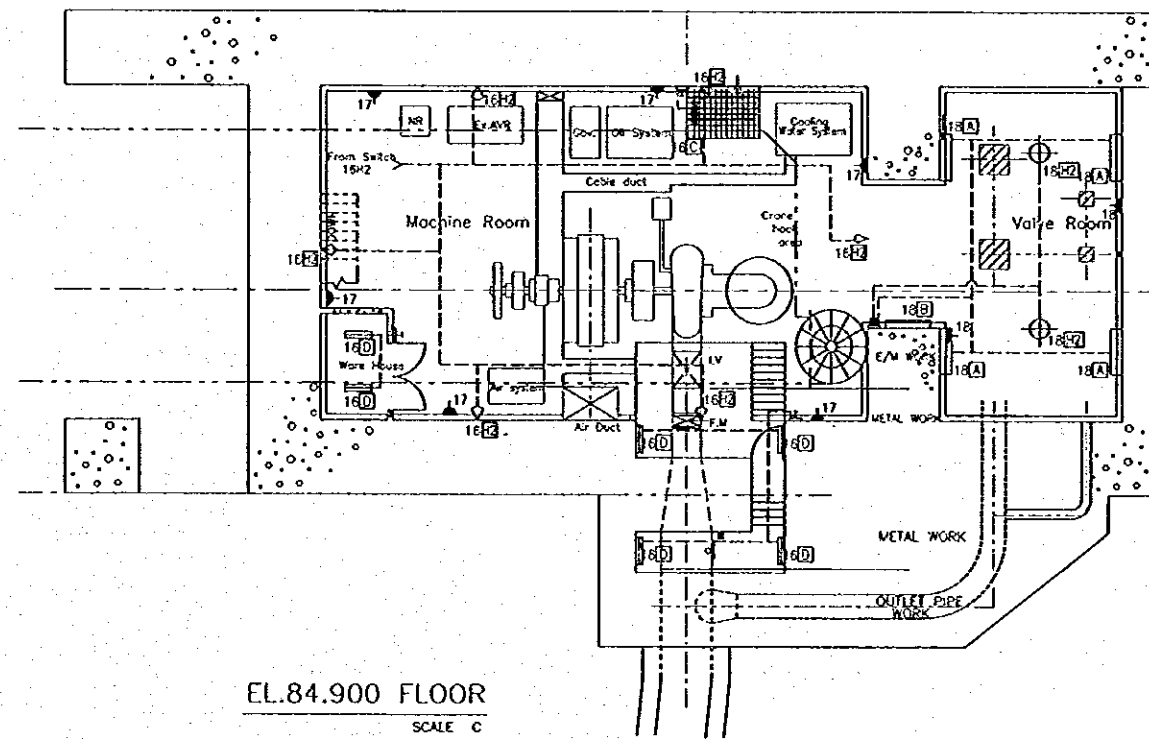
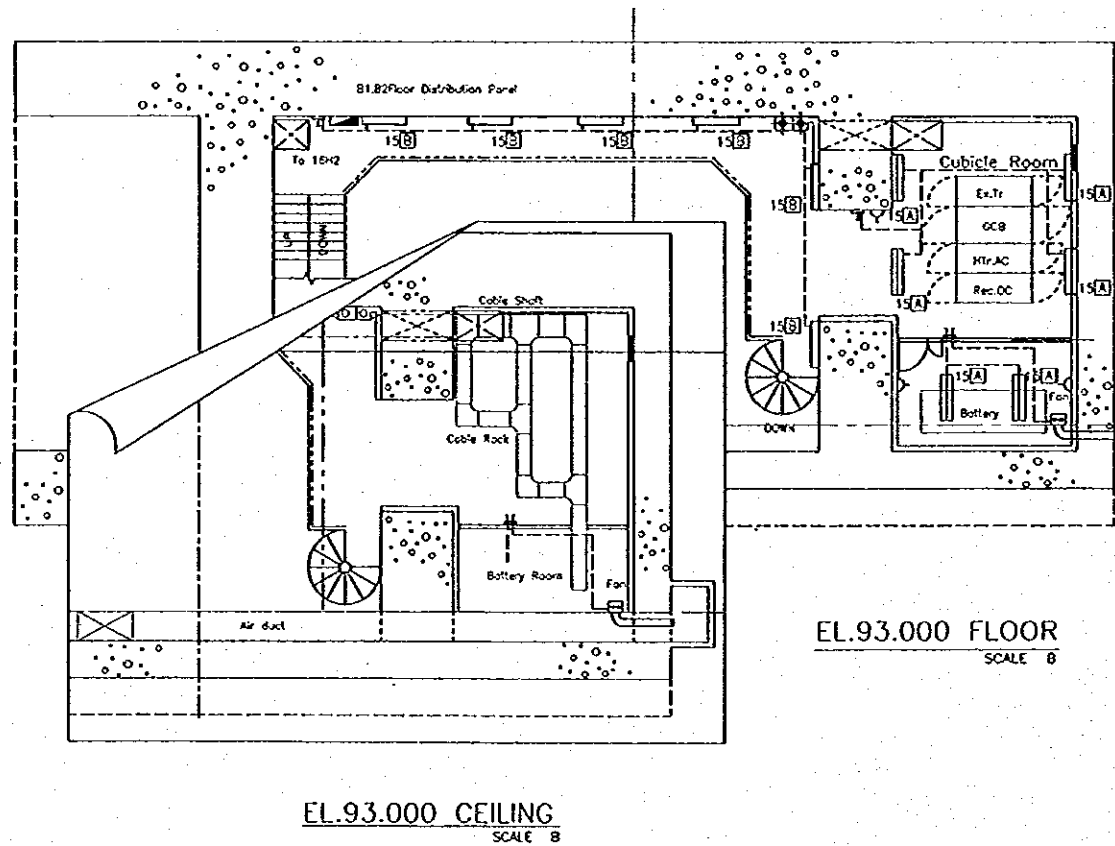
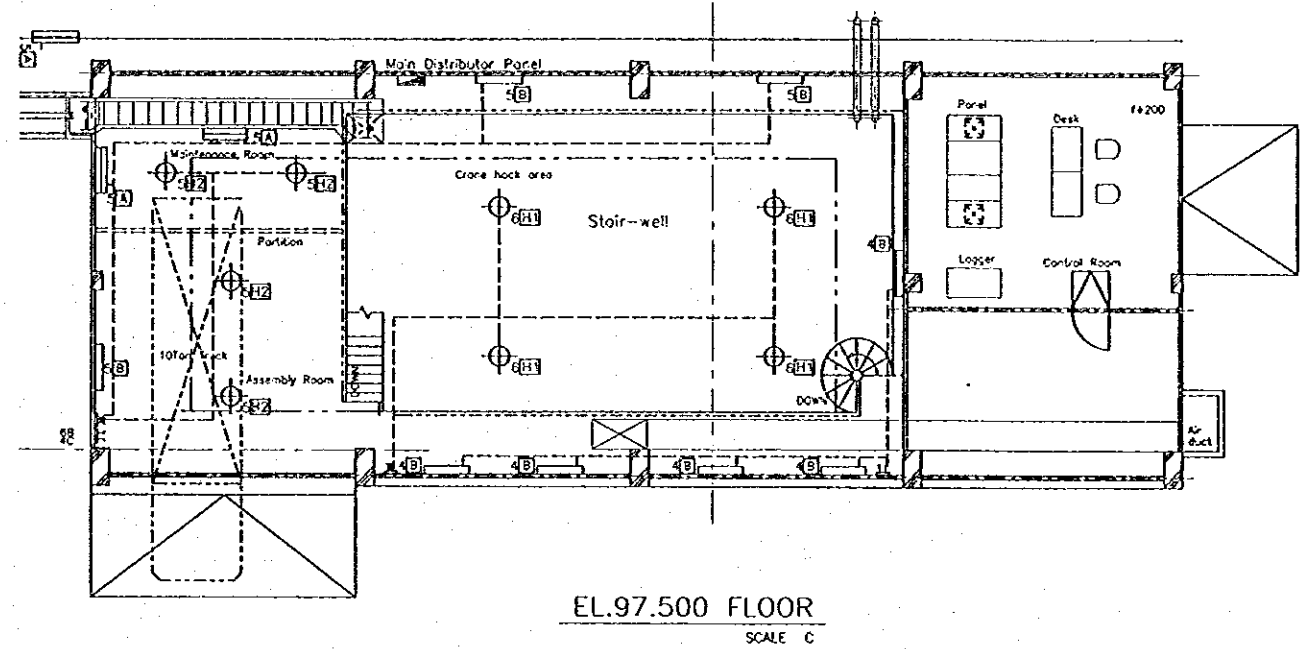
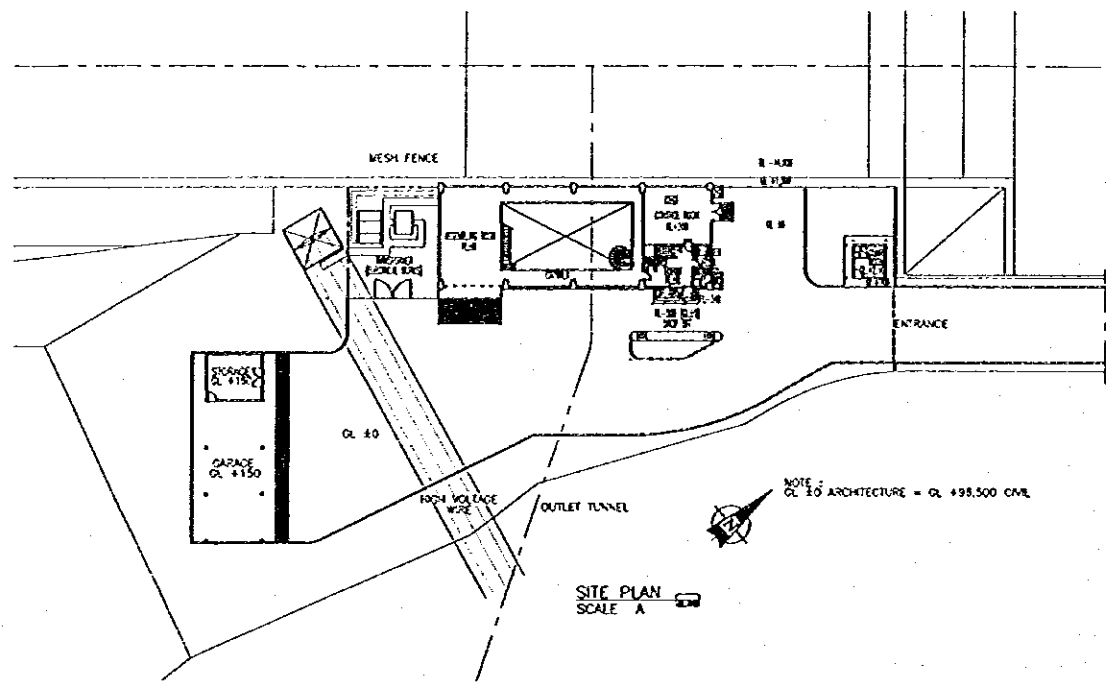
JD-P1-HS-Re-7 TAILRACE REINFORCEMENT SECTIONS

NOTES

1. THIS DRAWING SHOWS THE REINFORCEMENT FOR THE TAILRACE GATE AND SHAFT

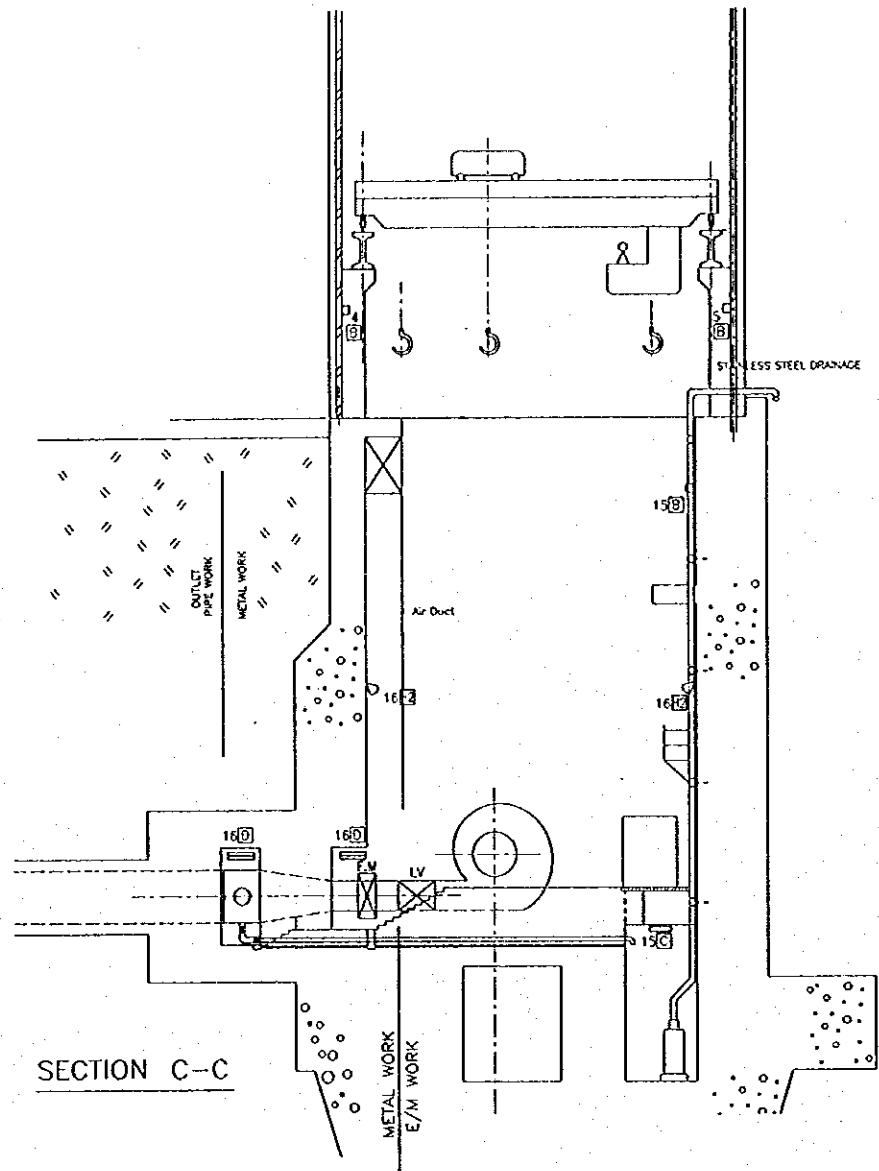
NO.	DATE	REVISIONS	ORIGINATED	DESIGNED	APPROVED

<b>THE REPUBLIC OF INDONESIA</b> MINISTRY OF PUBLIC WORKS DIRECTORATE GENERAL OF WATER RESOURCES DEVELOPMENT AND DIRECTORATE GENERAL OF HUMAN SETTLEMENT		PROVINCE CENTRAL JAVA	
PROJECT NAME FLOOD CONTROL, URBAN DRAINAGE AND WATER RESOURCES DEVELOPMENT IN SEMARANG IN THE REPUBLIC OF INDONESIA		DISTRICT SEMARANG CITY	
COMPONENT : JATIBARANO DAM CONSTRUCTION HYDROPOWER STATION TAILRACE GATE REINFORCEMENT SECTIONS		DRAWING NO. JD-P1-HS-Re-9 SHEET NO. 207	
JAPAN INTERNATIONAL COOPERATION AGENCY CII ENGINEERING CO. LTD. IN ASSOCIATION WITH PACIFIC CONSULTANTS INTERNATIONAL TOKYO INTERNATIONAL INC.		DESIGNED <i>T. Suro</i>	DATE / /
GROUP OF PLANNING AND DESIGN PROJECT MANAGER		CHECKED <i>[Signature]</i>	CONTRACT NO.

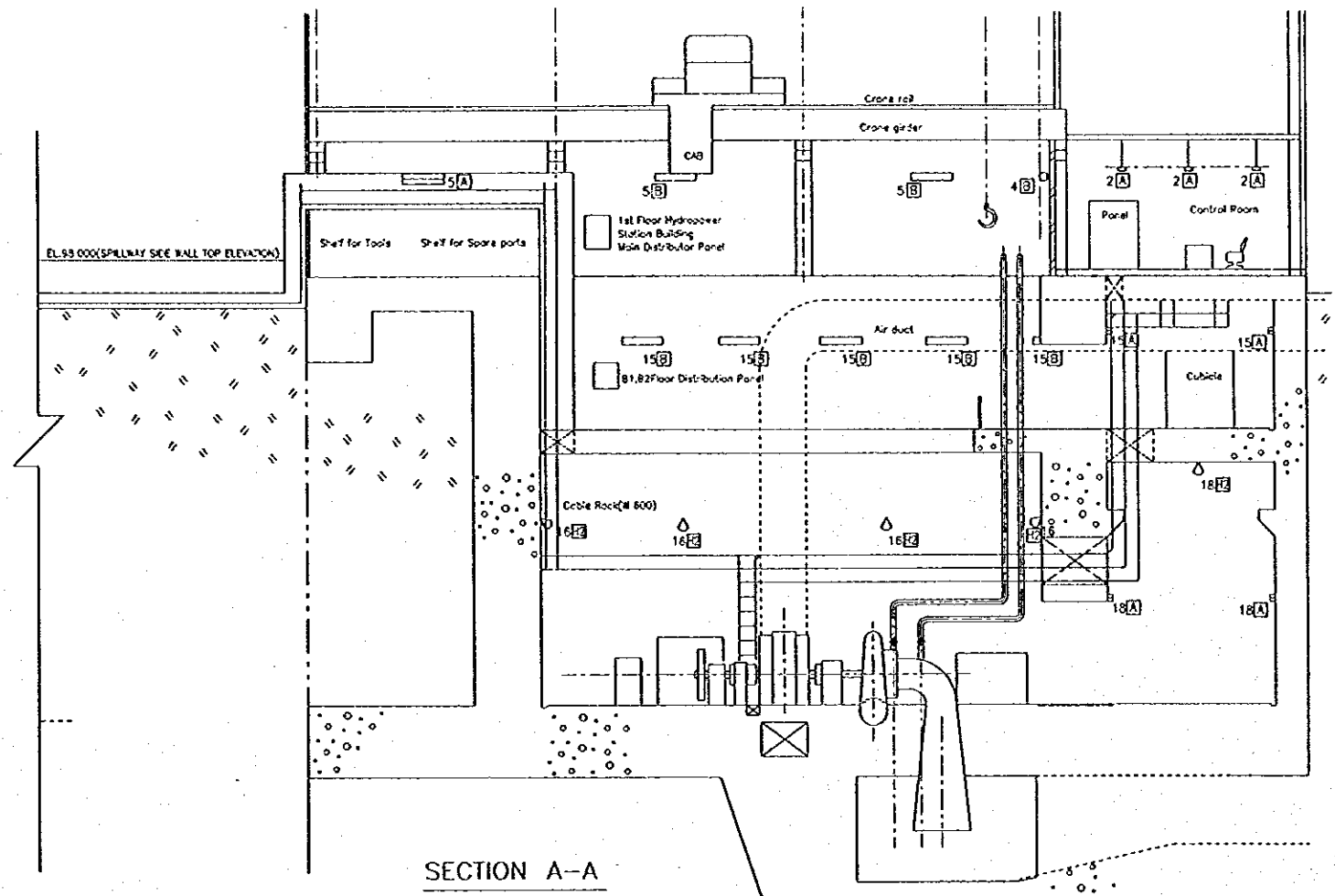


NO.	DATE	REVISIONS	ORIGINATED	DESIGNED	APPROVED

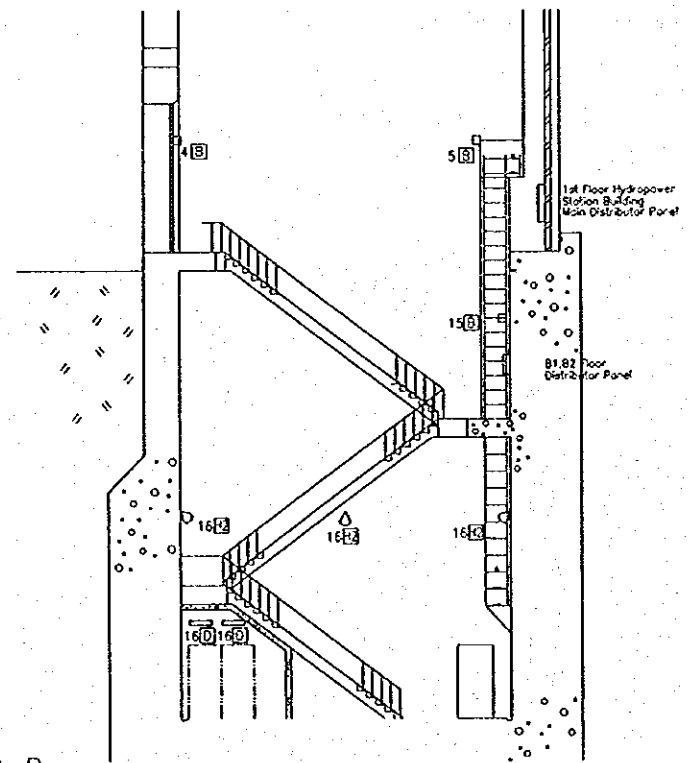
	<b>THE REPUBLIC OF INDONESIA</b> MINISTRY OF PUBLIC WORKS DIRECTORATE GENERAL OF WATER RESOURCES DEVELOPMENT AND DIRECTORATE GENERAL OF HUMAN SETTLEMENT	PROVINCE CENTRAL JAVA
	TRATUNSELUNA FLOOD CONTROL PROJECT COMPONENT : JATIBARANG DAM CONSTRUCTION HYDROPOWER STATION ELECTRO-MECHANICAL FACILITIES PLAN OF EACH SECTION	PROJECT NAME FLOOD CONTROL, URBAN DRAINAGE AND WATER SERVICES DEVELOPMENT OF SEMARANG IN THE REPUBLIC OF INDONESIA CONTRACT SEMARANG CITY
	DRAWING NO. JD-P1-HS-EM-1 SHEET NO. 206	DATE CONTRACT NO.
	DESIGNED CHECKED APPROVED CHIEF OF PLANNING AND DESIGN PROJECT MANAGER	SIGNATURES 



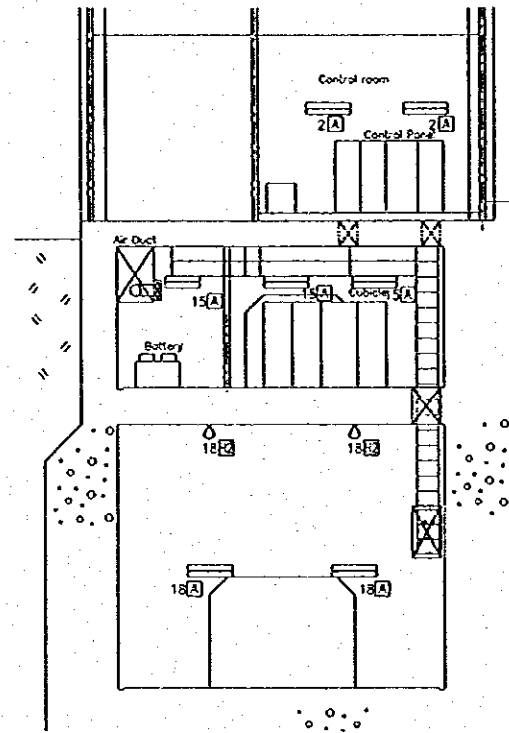
SECTION C-C



SECTION A-A



SECTION B-B

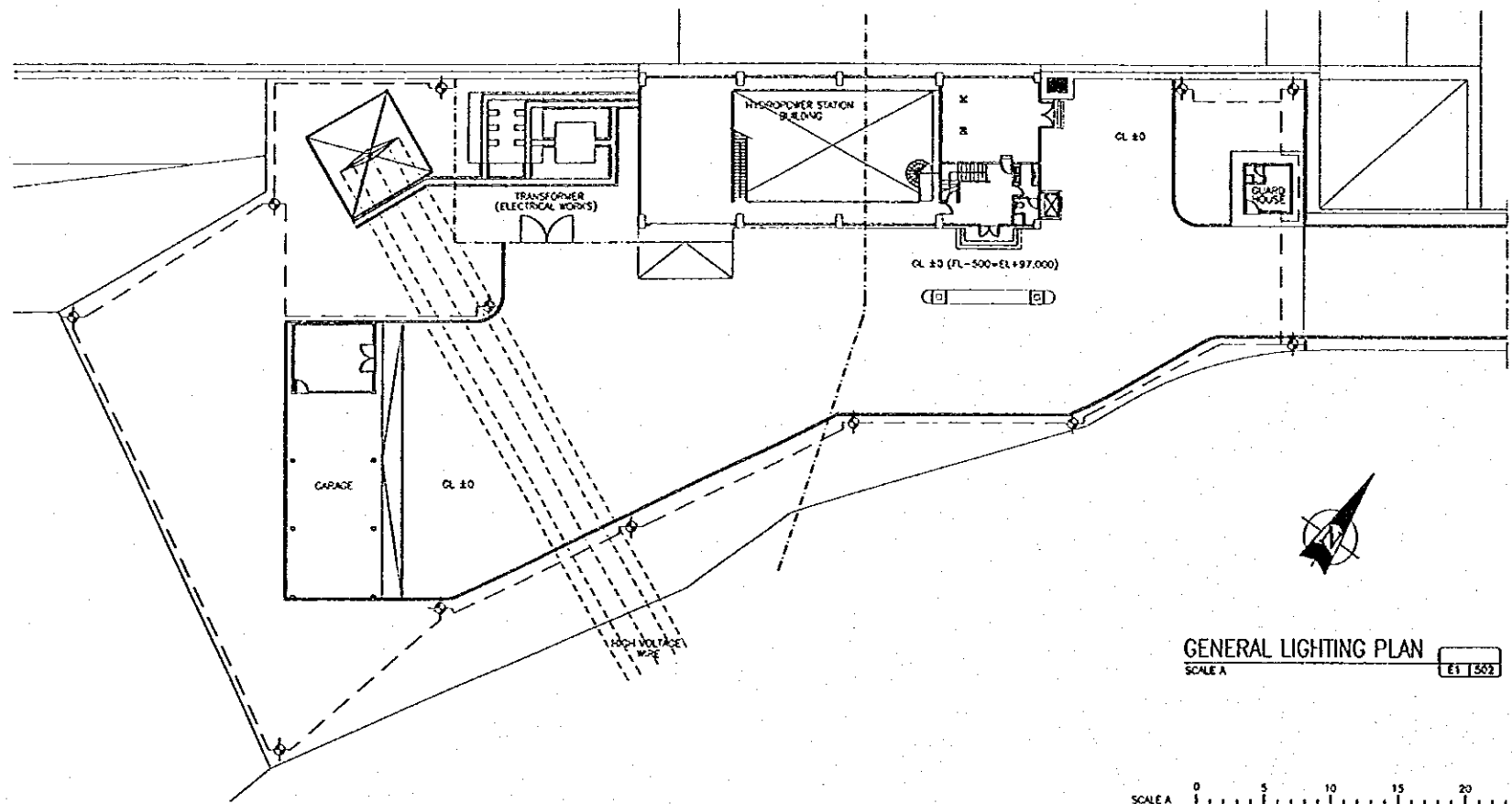


SECTION D-D

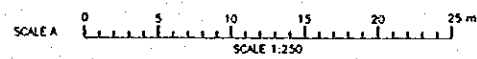
SCALE 1:100

NO.	DATE	REVISIONS	COORDINATED	DESIGNED	APPROVED

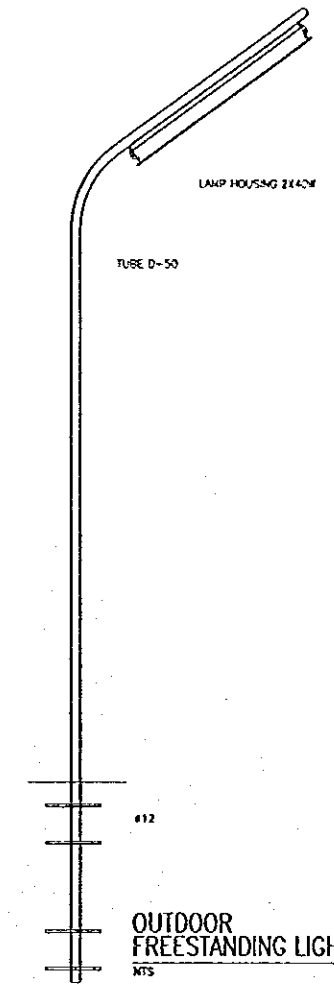
THE REPUBLIC OF INDONESIA MINISTRY OF PUBLIC WORKS DIRECTORATE GENERAL OF WATER RESOURCES DEVELOPMENT AND DIRECTORATE GENERAL OF HUMAN SETTLEMENTS		PROVINCE CENTRAL JAVA
IRATUNSELUNA FLOOD CONTROL PROJECT COMPONENT : JATIBARANG DAM CONSTRUCTION HYDROPOWER STATION ELECTRO-MECHANICAL FACILITIES PROFILE OF EACH SECTION		PROJECT NAME FLOOD CONTROL, URBAN DRAINAGE AND WATER RESOURCES DEVELOPMENT IN SEMARANG IN THE REPUBLIC OF INDONESIA
JAPAN INTERNATIONAL COOPERATION AGENCY OJI ENGINEERING CO., LTD. IN ASSOCIATION WITH PACIFIC CONSULTANTS INTERNATIONAL JAPAN INTERNATIONAL INC.		AGENCY SEMARANG CITY
CHIEF OF PLANNING AND DESIGN PROJECT MANAGER		DRAWING NO. JD-PI-HS-Em-2 SHEET NO. 209
DESIGNED <i>[Signature]</i>	CHECKED <i>[Signature]</i>	DATE CONTRACT NO.



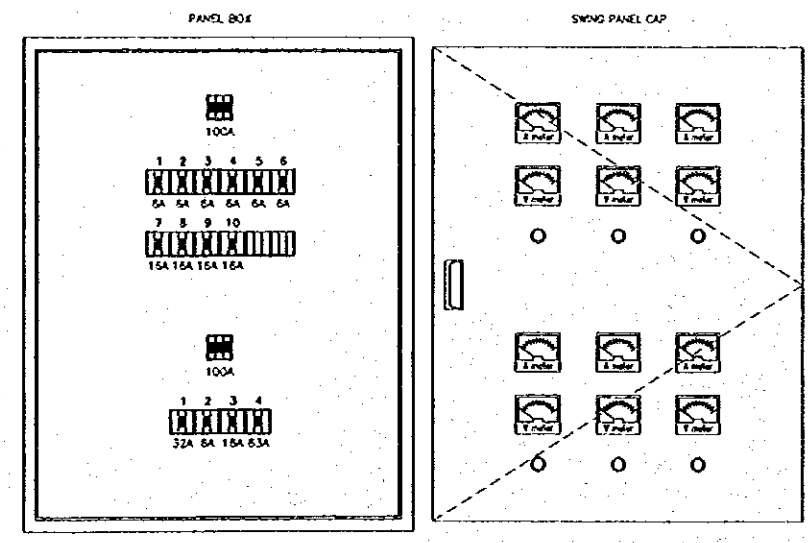
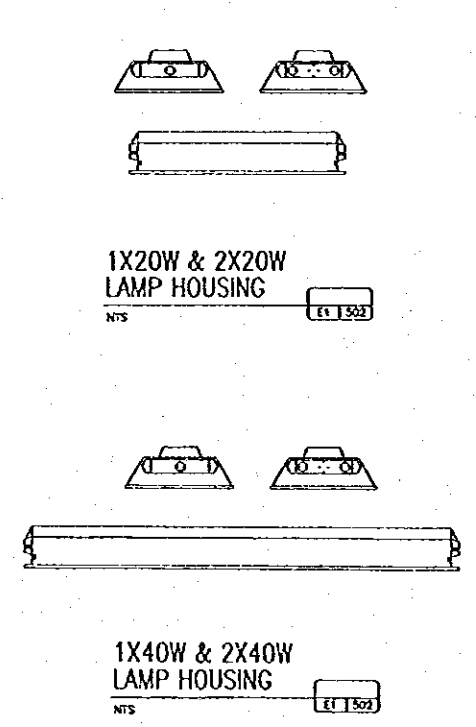
GENERAL LIGHTING PLAN  
SCALE A



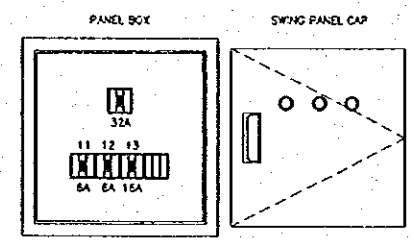
LIGHTING TYPE	QUANTITY
OUTDOOR FREESTANDING LIGHTING	12 Pcs



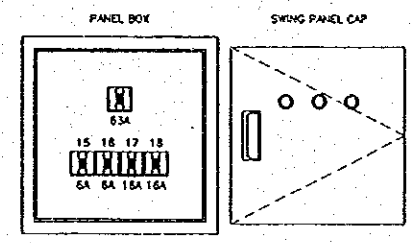
OUTDOOR FREESTANDING LIGHTING  
NTS



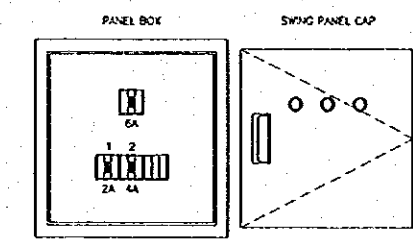
1st. FLOOR HYDROPOWER STATION BUILDING  
MAIN DISTRIBUTOR PANEL  
NTS



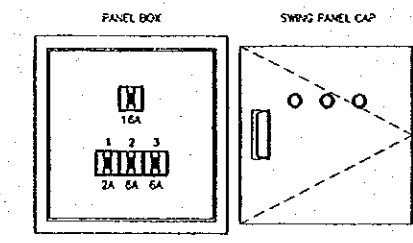
2nd. FLOOR  
HYDROPOWER STATION BUILDING  
DISTRIBUTOR PANEL  
NTS



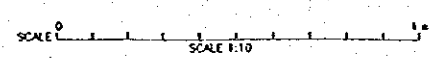
B1,B2 FLOOR  
DISTRIBUTOR PANEL  
NTS



GARAGE  
DISTRIBUTOR PANEL  
NTS



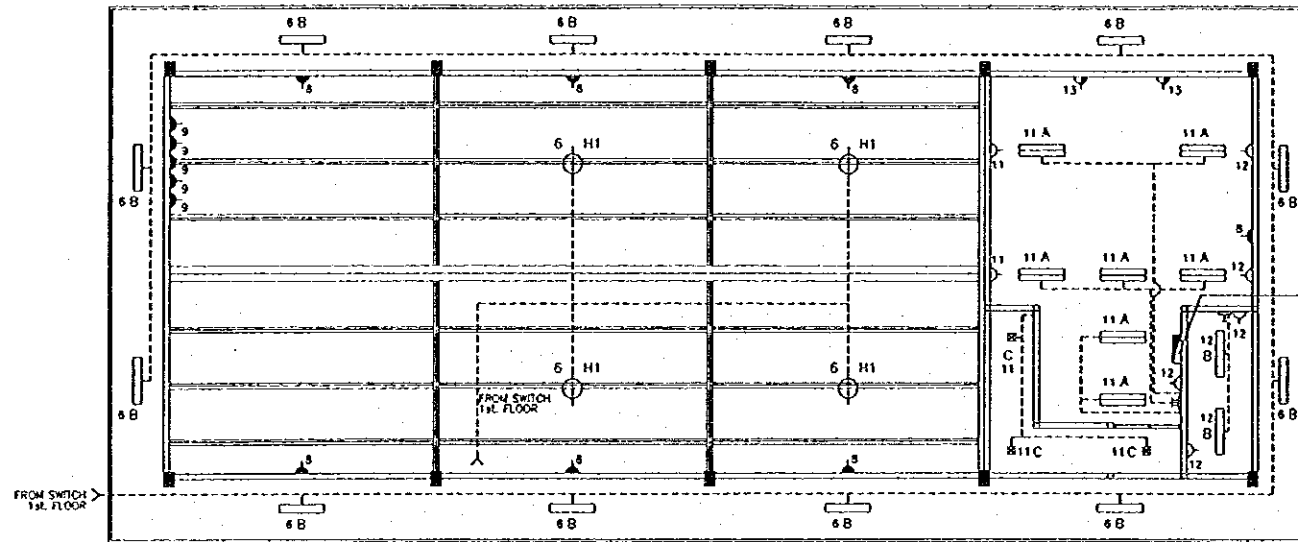
GUARD HOUSE  
DISTRIBUTOR PANEL  
NTS



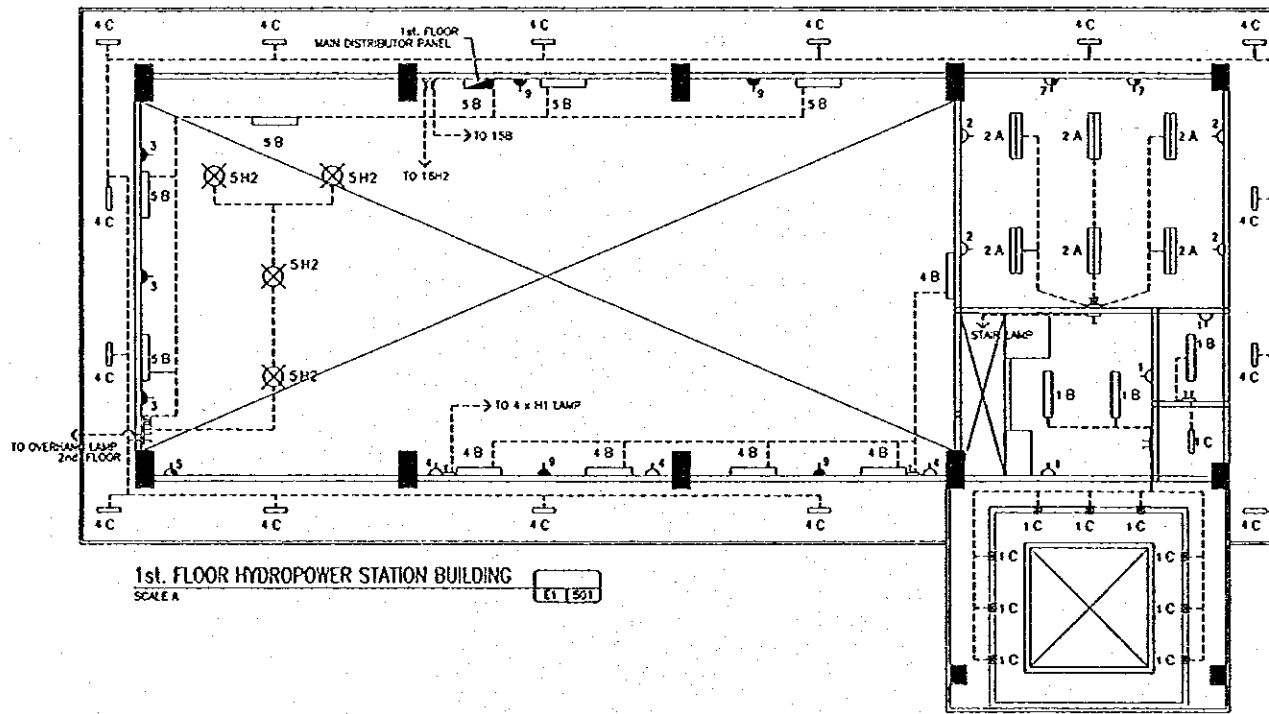
NO.	DATE	REVISIONS	ORIGINATED	DESIGNED	APPROVED

THE REPUBLIC OF INDONESIA MINISTRY OF PUBLIC WORKS DIRECTORATE GENERAL OF WATER RESOURCES DEVELOPMENT AND DIRECTORATE GENERAL OF HUMAN SETTLEMENT JATUNSELUNA FLOOD CONTROL PROJECT COMPONENT : JATIBARANG DAM CONSTRUCTION HYDROPOWER STATION ELECTRO-MECHANICAL FACILITIES GENERAL LIGHTING PLAN & DETAIL		PROVINCE CENTRAL JAVA PROJECT NAME FLOOD CONTROL, DRAINAGE AND WATER SUPPLY DEVELOPMENT BY SIMARANG IN THE REPUBLIC OF INDONESIA DISTRICT SEMARANG CITY DRAWING NO. JD-P1-HS-Em-3 SHEET NO. 210 DATE CONTRACT NO.
DESIGNED CHECKED DATE OF PLANNING AND DESIGN PROJECT MANAGER	APPROVED APPROVED	DATE CONTRACT NO.

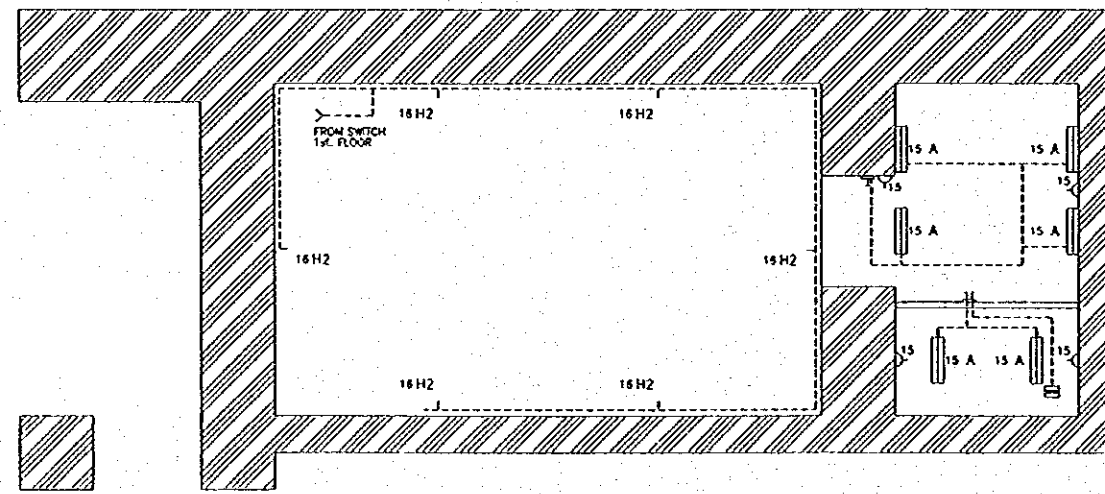




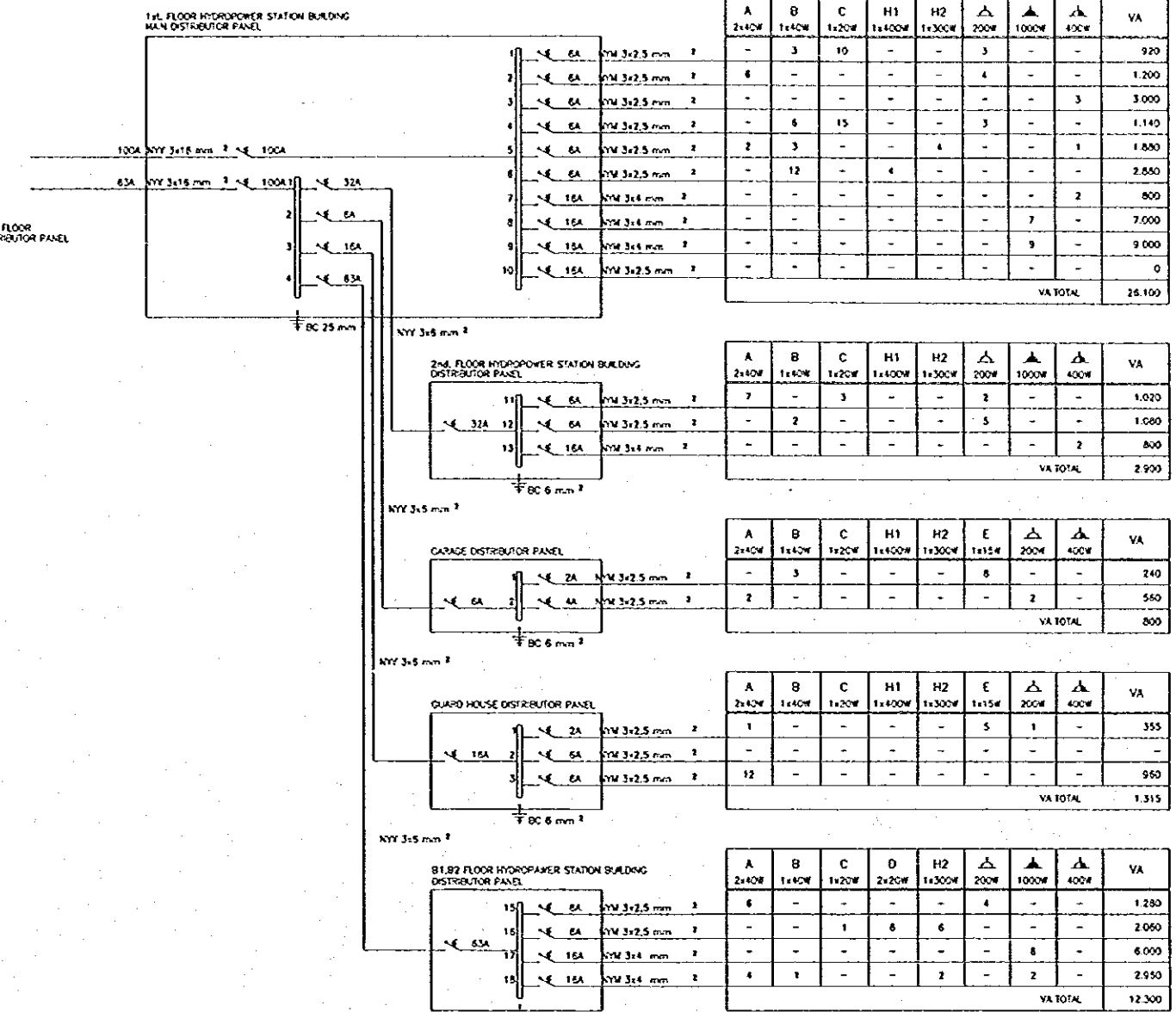
2nd. FLOOR HYDROPOWER STATION BUILDING  
SCALE A ET 1501



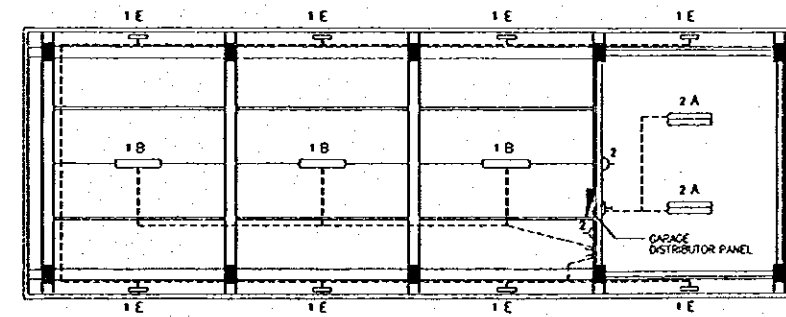
1st. FLOOR HYDROPOWER STATION BUILDING  
SCALE A ET 1501



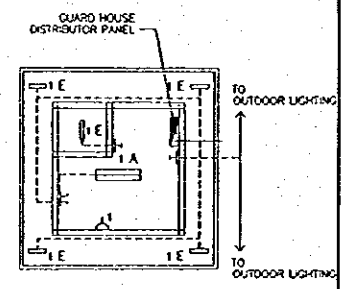
CUBICLE AND BATTERY ROOM FLOOR  
HYDROPOWER STATION BUILDING  
SCALE A ET 1501



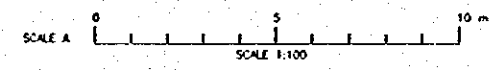
ONE LINE ELECTRICAL DIAGRAM  
NTS ET 1501



GARAGE  
SCALE A ET 1501

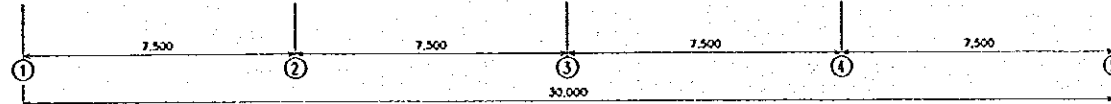
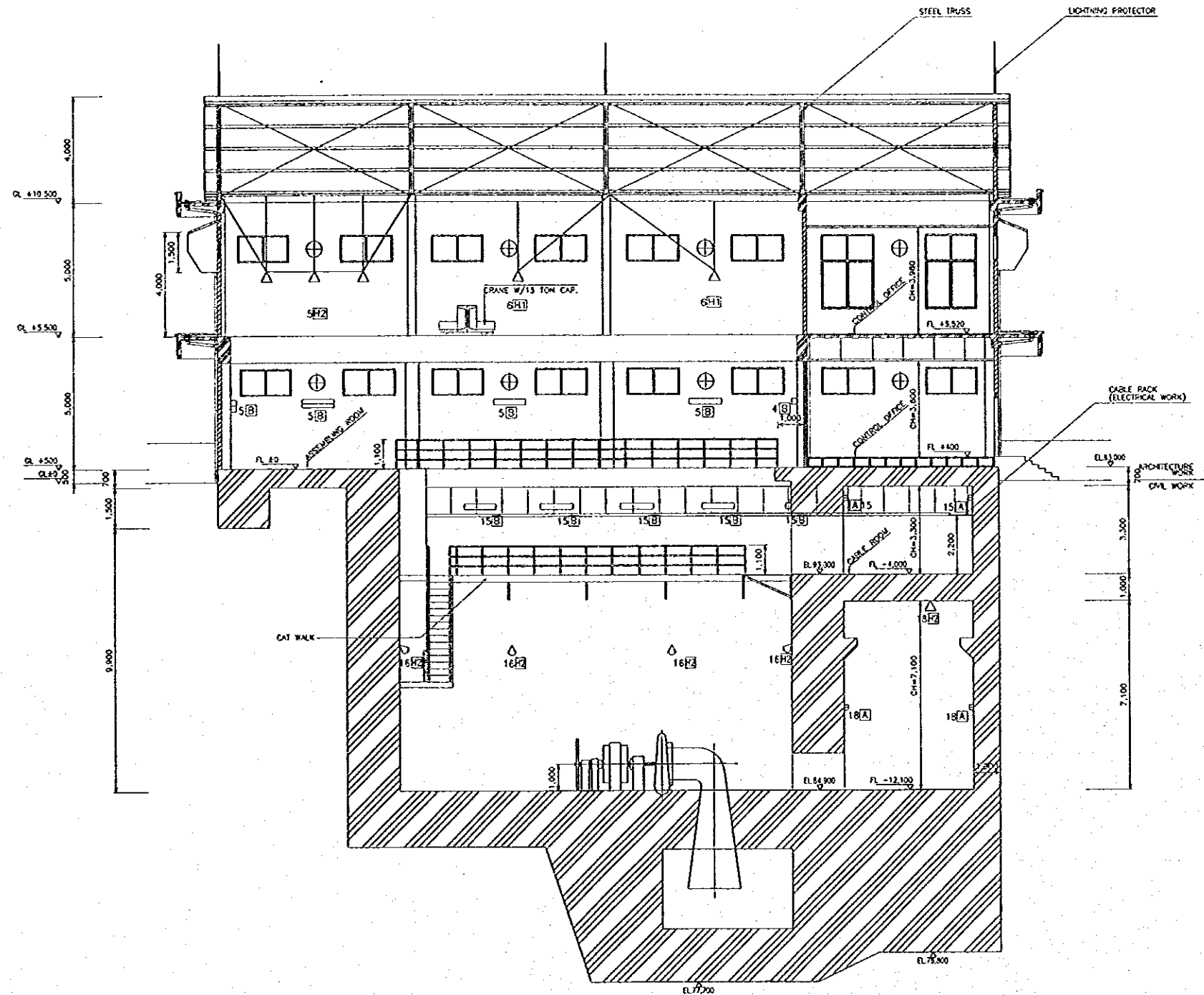


GUARD HOUSE  
SCALE A ET 1501

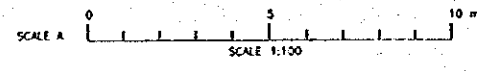


NO.	DATE	REVISIONS	ORIGINATED	DESIGNED	APPROVED

THE REPUBLIC OF INDONESIA MINISTRY OF PUBLIC WORKS DIRECTORATE GENERAL OF WATER RESOURCES DEVELOPMENT AND DIRECTORATE GENERAL OF HUMAN SETTLEMENTS IRATUNSSURNA FLOOD CONTROL PROJECT COMPONENT: JATIBARANG DAM CONSTRUCTION HYDROPOWER STATION ELECTRO-MECHANICAL FACILITIES LIGHTING PLAN AND ONE LINE ELECTRICAL DIAGRAM		PROJECT CENTRAL JAVA PROJECT NAME FLOOD CONTROL, URBAN DRAINAGE AND WATER RESOURCES DEVELOPMENT IN SEMARANG IN THE REPUBLIC OF INDONESIA DISTRICT SEMARANG CITY DRAWING NO. JD-P1-HS-EM-4 REVISION NO. 211 DATE CONTRACT NO.
LIAISON INTERNATIONAL ORGANIZATION CONSULTING ENGINEERS PT. SANGHATI, LTD. IN ASSOCIATION WITH PT. CONSULTANTS INTERNATIONAL JAWA BARU, INDONESIA	DESIGNED CHECKED APPROVED CHIEF OF PLANNING AND DESIGN PROJECT MANAGER	DATE

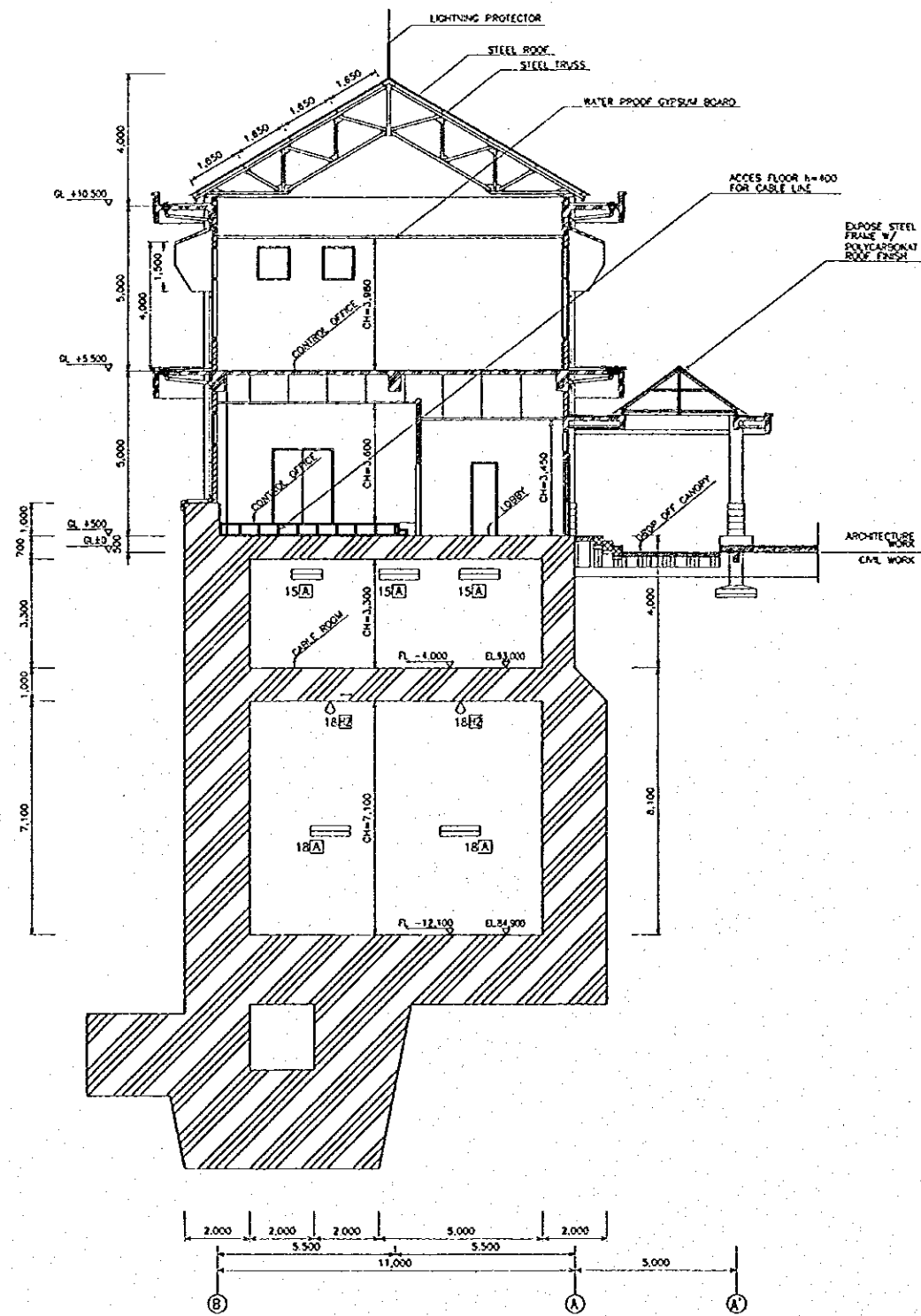


SECTION A-A  
SCALE A

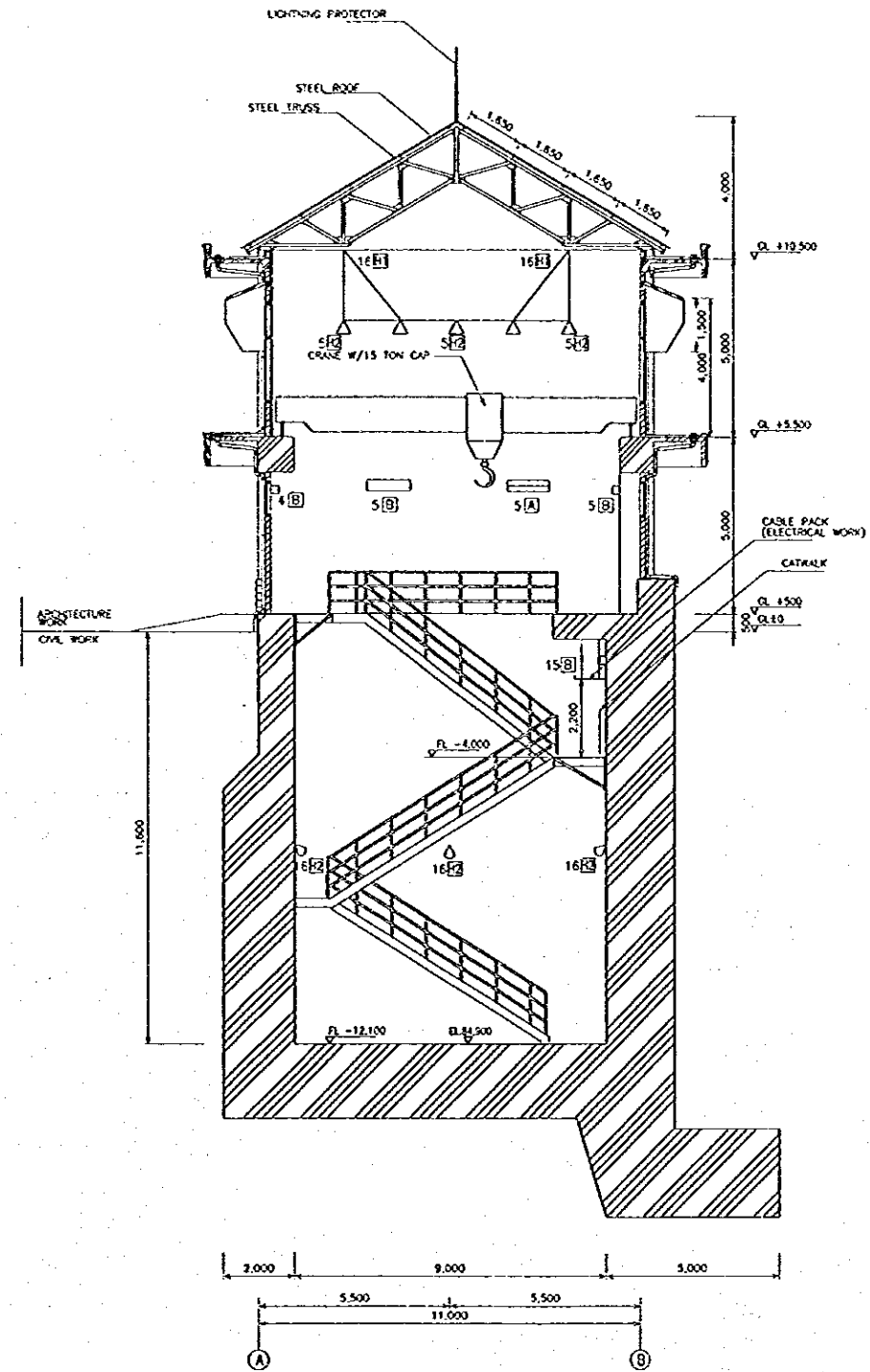


NO.	DATE	REVISIONS	ORIGINATED	DESIGNED	APPROVED

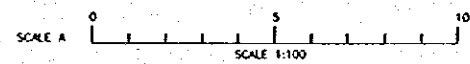
<b>THE REPUBLIC OF INDONESIA</b> MINISTRY OF PUBLIC WORKS DIRECTORATE GENERAL OF WATER RESOURCES DEVELOPMENT AND DIRECTORATE GENERAL OF HUMAN SETTLEMENT TRATUNSELUNA FLOOD CONTROL PROJECT COMPONENT : JATIBARANG DAM CONSTRUCTION HYDROPOWER STATION ELECTRO-MECHANICAL FACILITIES LIGHTING PLAN OF SECTION A-A		PROVINCE CENTRAL JAVA PROJECT NAME FLOOD CONTROL, DRAIN DRAINAGE AND WATER RESOURCES DEVELOPMENT IN SEMARANG IN THE REPUBLIC OF INDONESIA DISTRICT SEMARANG CITY DRAWING NO. JO-P1-HS-Em-5 SHEET NO. 212 DATE CONTRACTING NO.
JAPAN INTERNATIONAL COOPERATION AGENCY CTE ENGINEERING CO. LTD. IN ASSOCIATION WITH PACIFIC CONSULTANTS INTERNATIONAL PANGO INTERNATIONAL INC.	DESIGNED CHECKED CHIEF OF PLANNING AND DESIGN PROJECT MANAGER	APPROVED DATE



SECTION B-B  
SCALE A

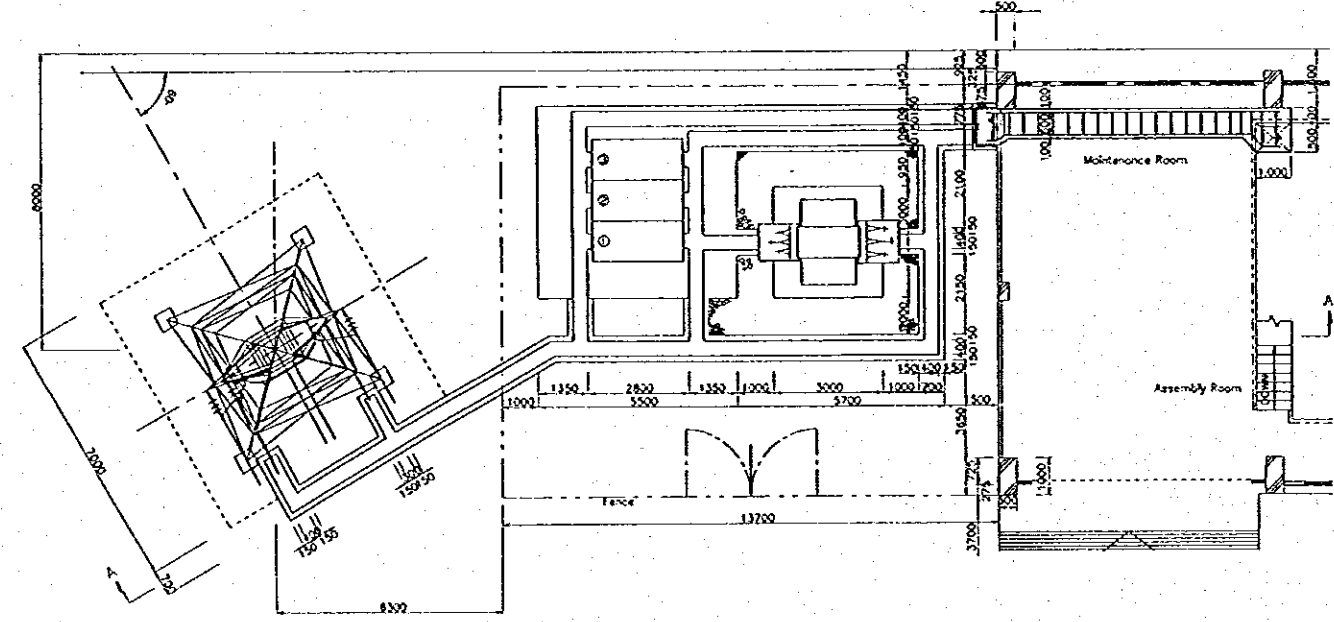
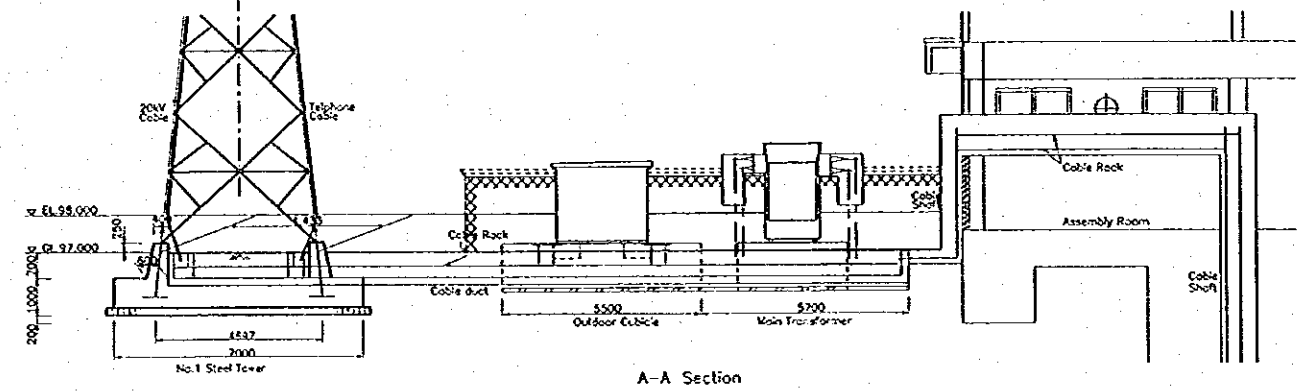
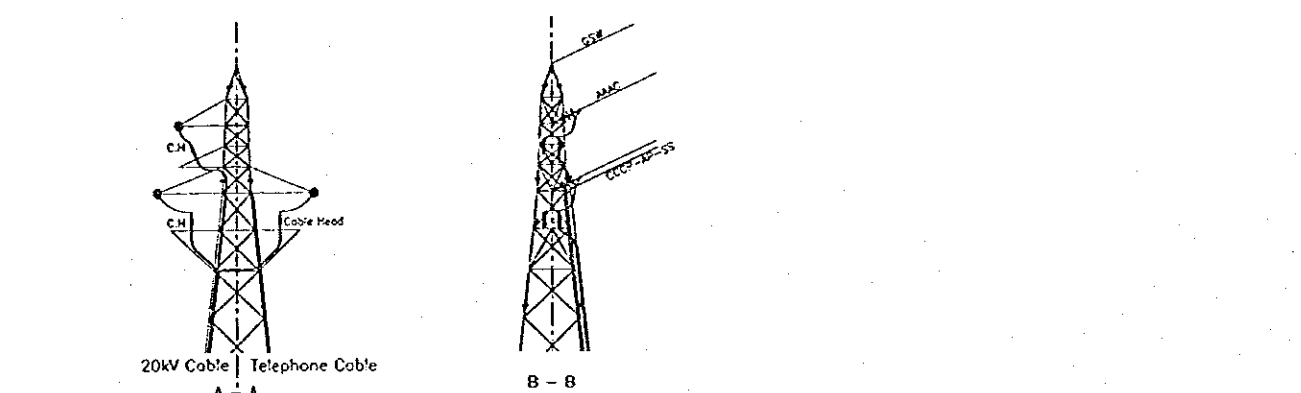


SECTION C-C  
SCALE A

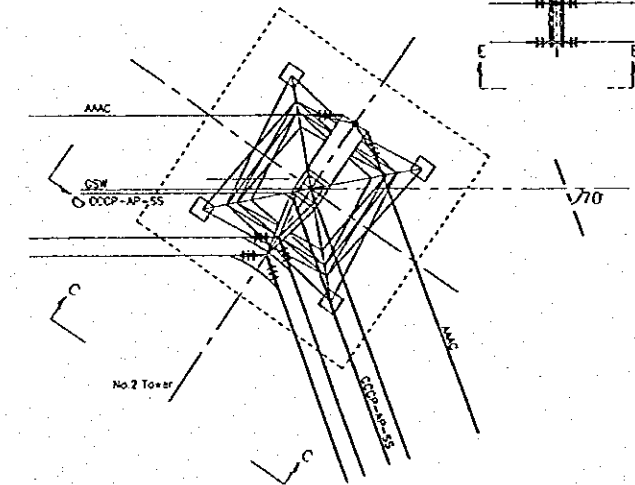
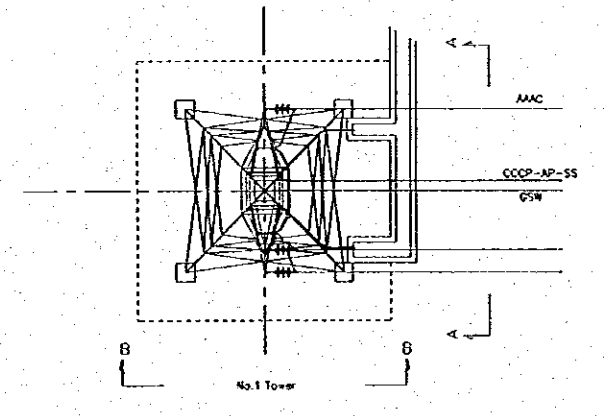
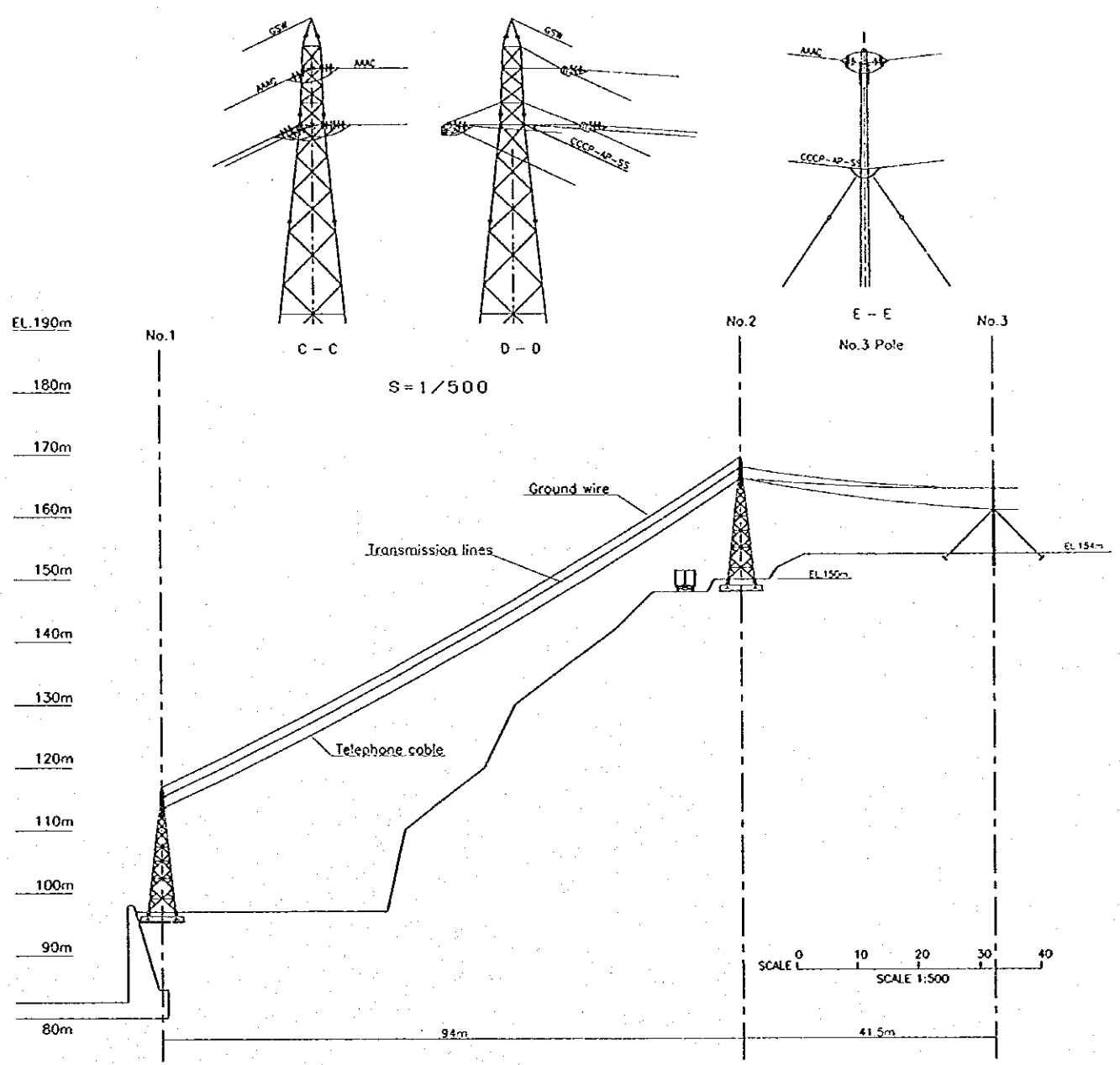


NO.	DATE	REVISIONS	ORIGINATED	DESIGNED	APPROVED

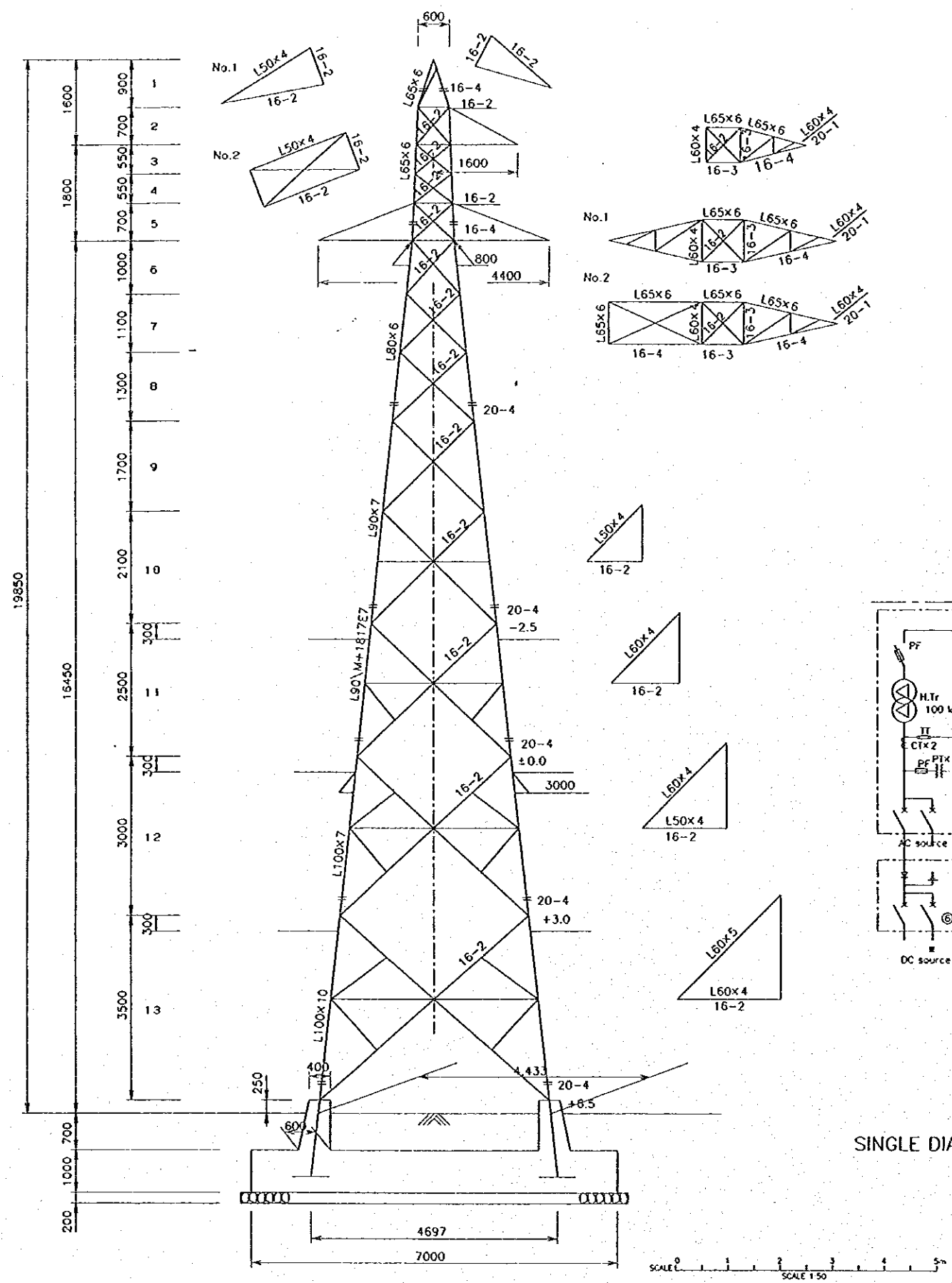
	THE REPUBLIC OF INDONESIA MINISTRY OF PUBLIC WORKS DIRECTORATE GENERAL OF WATER RESOURCES DEVELOPMENT AND DIRECTORATE GENERAL OF HUMAN SETTLEMENT		PROVINCE CENTRAL JAVA
	PRATUNSELUNA FLOOD CONTROL PROJECT COMPONENT : JATIBARANG DAM CONSTRUCTION HYDROPOWER STATION ELECTRO-MECHANICAL FACILITIES LIGHTING PLAN OF SECTION B-B AND C-C		PROJECT NAME FLOOD CONTROL, URBAN DRAINAGE AND WATER RESOURCES DEVELOPMENT OF SEMARANG IN THE REPUBLIC OF INDONESIA
	JAPAN INTERNATIONAL COOPERATION AGENCY JICA ENGINEERING CO., LTD. IN ASSOCIATION WITH PACIFIC CONSULTANTS INTERNATIONAL PARIWISATA INTERNATIONAL, INC.		CITY SEMARANG CITY
	CHIEF OF PLANNING AND DESIGN PROJECT MANAGER		DRAWING NO. JD-P1-HS-Em-6 SHEET NO. 213 DATE CONTRACT NO.



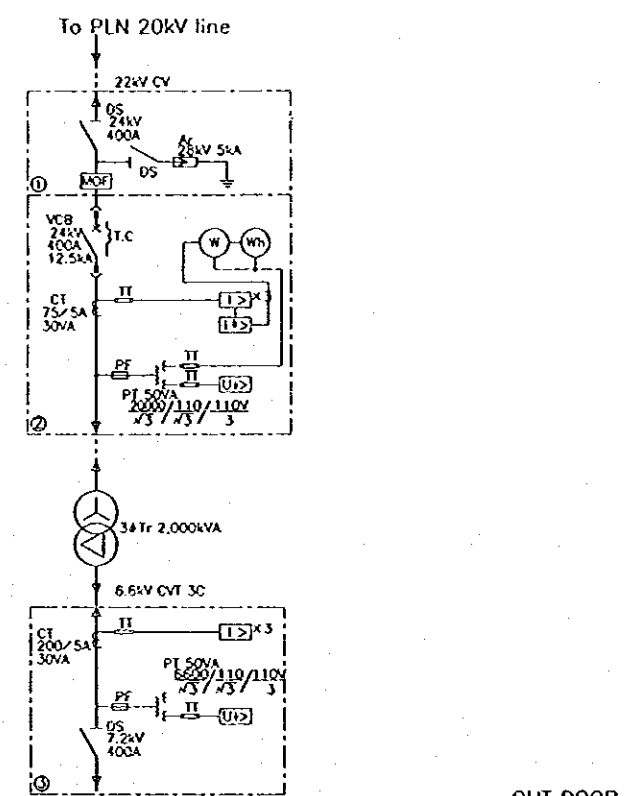
0 1 2 3 4 5 6 7 8 9 10  
SCALE 1:100



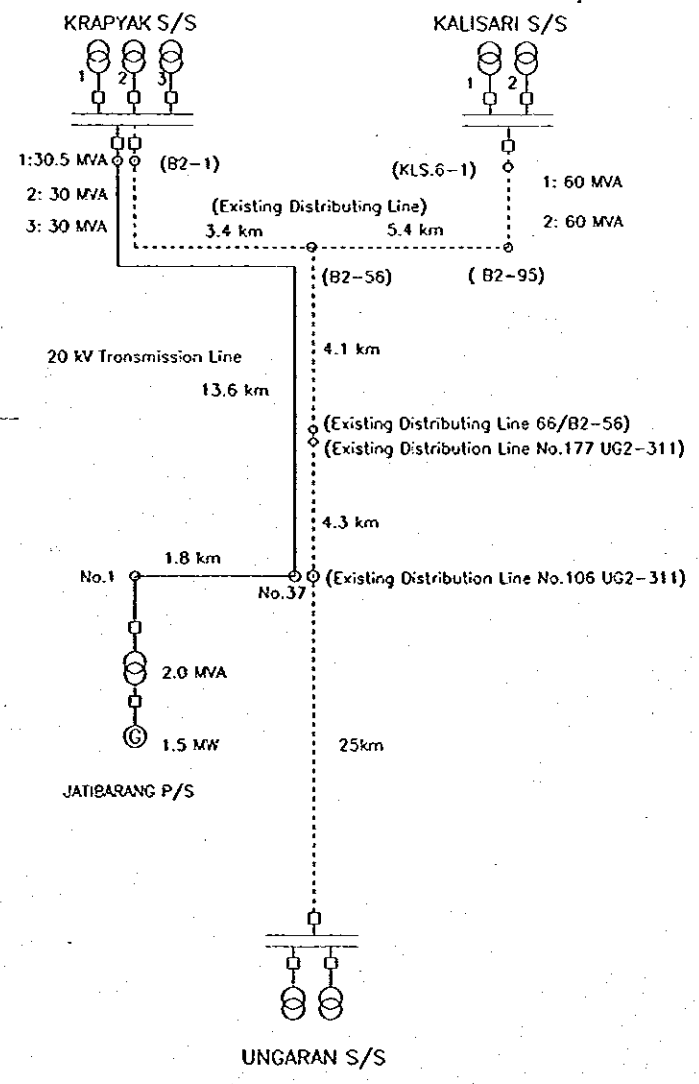
THE REPUBLIC OF INDONESIA MINISTRY OF PUBLIC WORKS DIRECTORATE GENERAL OF WATER RESOURCES DEVELOPMENT AND DIRECTORATE GENERAL OF HUMAN SETTLEMENT IRATUNSELUNA FLOOD CONTROL PROJECT COMPONENT: JATIBARANG DAM CONSTRUCTION HYDROPOWER STATION ELECTRO-MECHANICAL FACILITIES SUB-STATION & STEEL TOWER				PROVINCE: CENTRAL JAVA PROJECT NAME: FLOOD CONTROL, URBAN DRAINAGE AND WATER UTILITIES DEVELOPMENT IN SEMARANG IN THE REPUBLIC OF INDONESIA CONTRACT: SEMARANG CITY DRAWING NO. JD-P1-HS-Etm-7 SHEET NO. 214 DATE: _____ CONTRACT NO.: _____	
JAPAN INTERNATIONAL COOPERATION AGENCY OTE ENGINEERING CO., LTD. IN ASSOCIATION WITH PACIFIC CONSULTANTS INTERNATIONAL PAKCO INTERNATIONAL, INC.				DESIGNED: <i>[Signature]</i> CHECKED: <i>[Signature]</i> IN CHARGE OF PLANNING AND DESIGN: <i>[Signature]</i> PROJECT MANAGER: <i>[Signature]</i>	
NO.	DATE	REVISIONS	ORIGINATED	DESIGNED	APPROVED



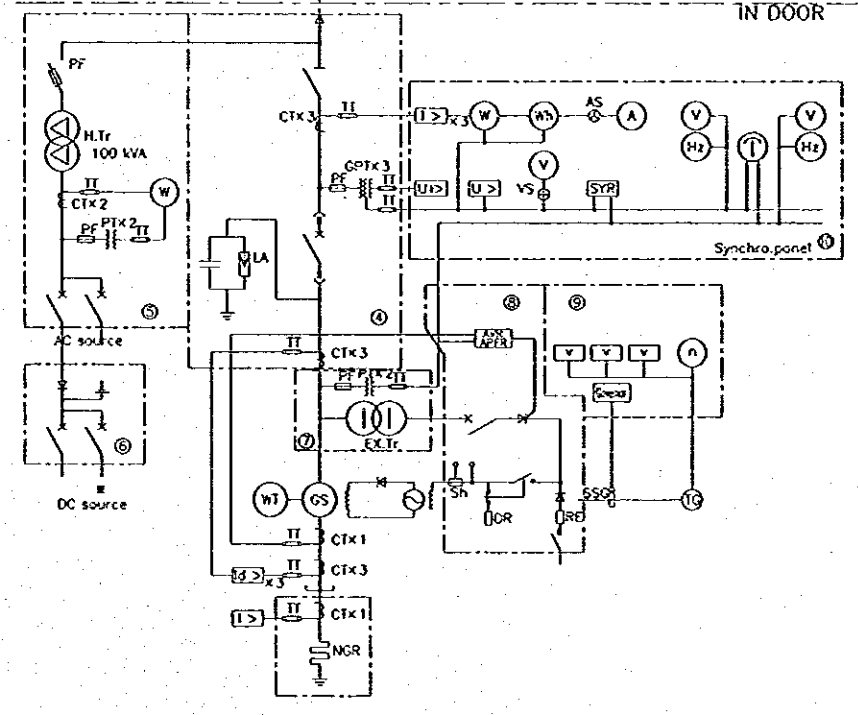
STANDARD ASSEMBLY OF STEEL TOWER



SINGLE DIAGRAM OF JATIBARANG HYDROPOWER STATION

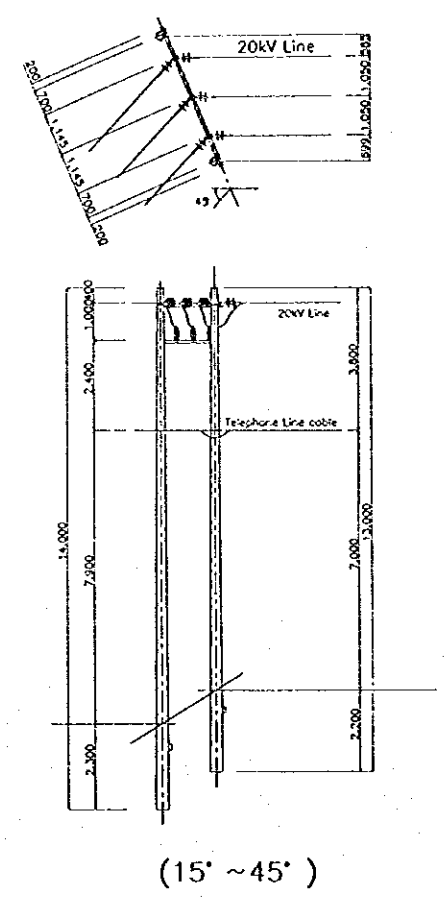
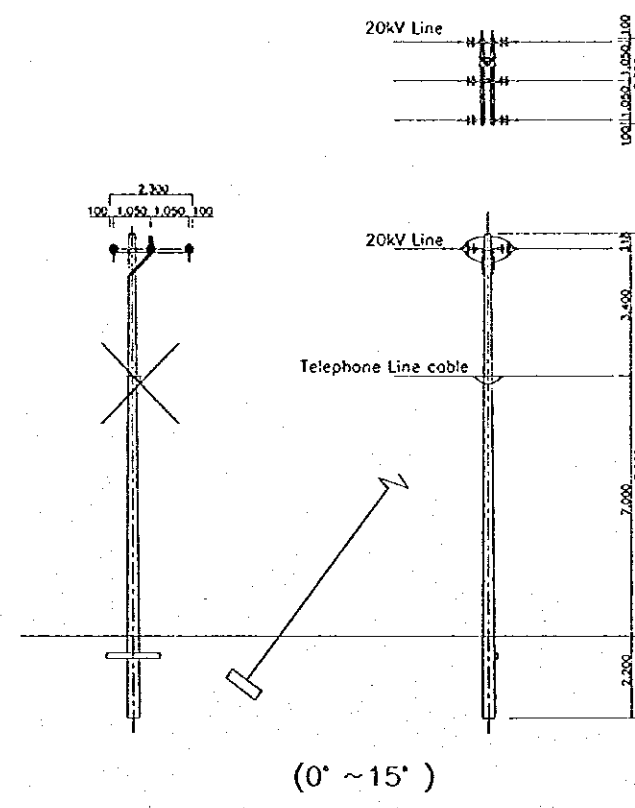
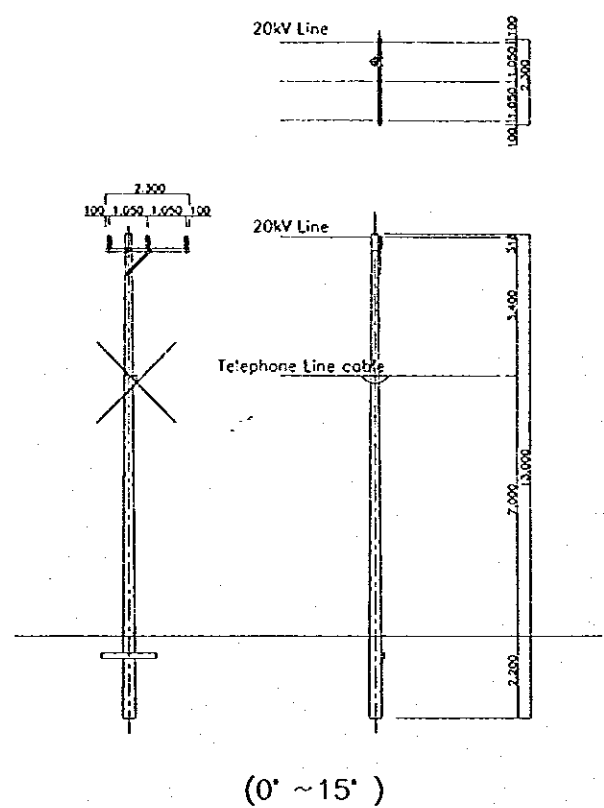
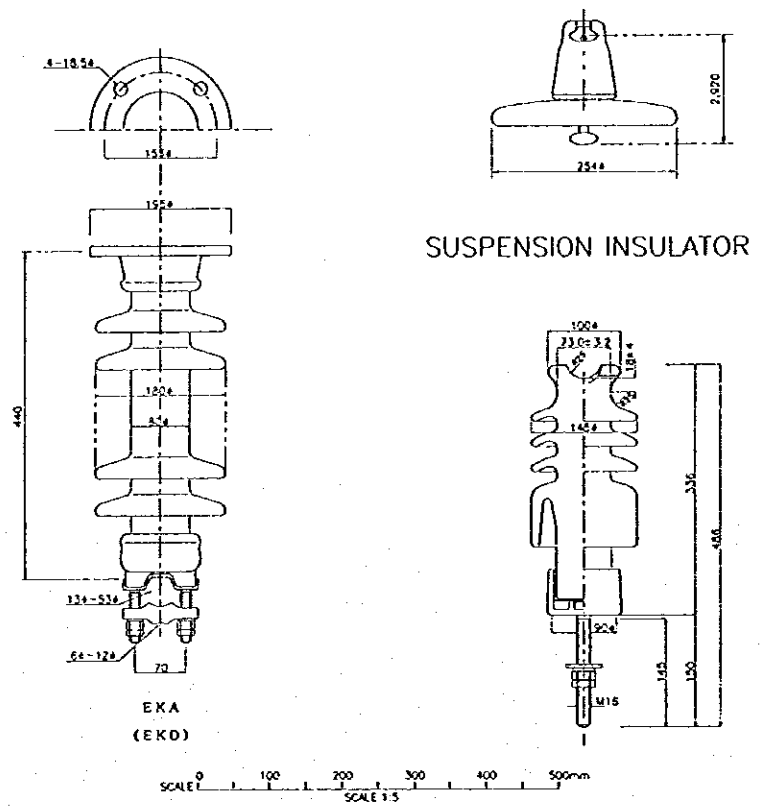


CONNECTION DIAGRAM OF TRANSMISSION LINE

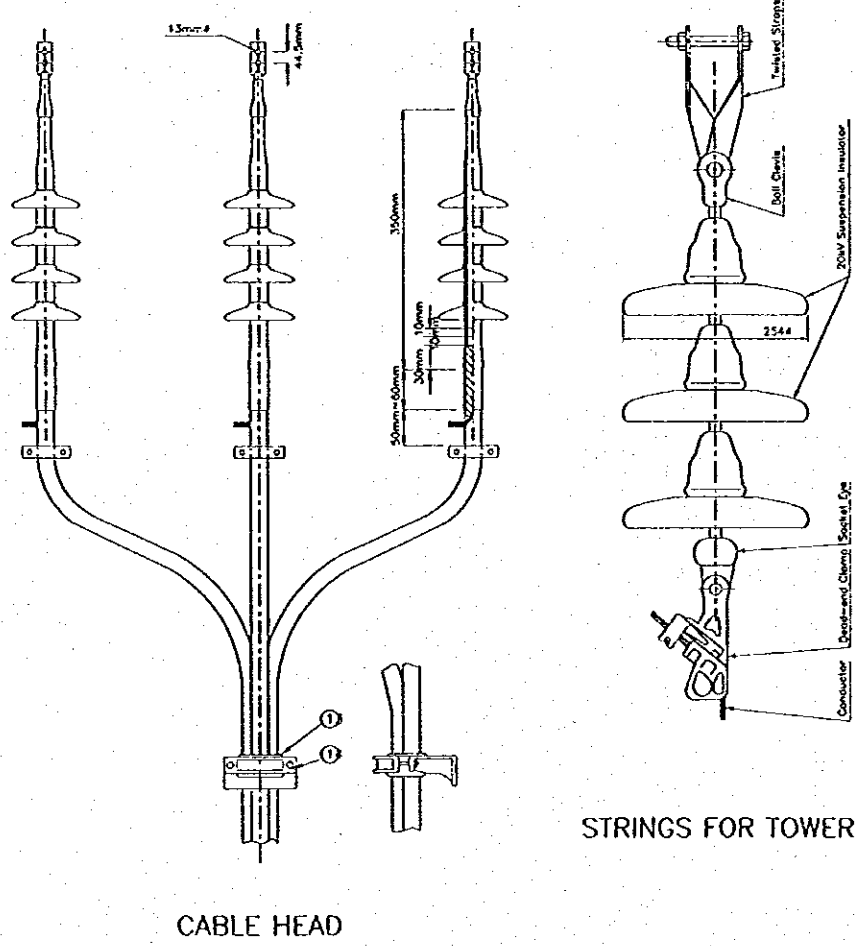
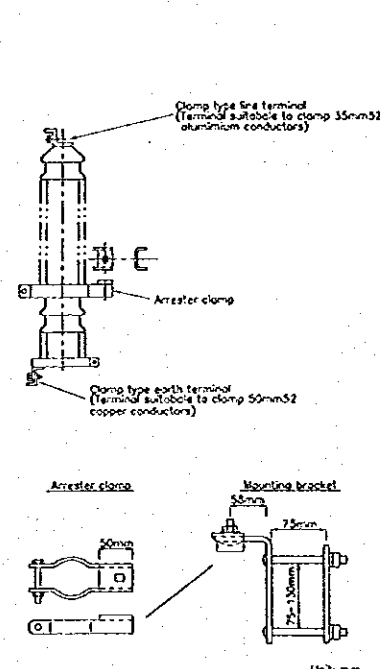


NO.	DATE	REVISIONS	ORIGINATED	DESIGNED	APPROVED

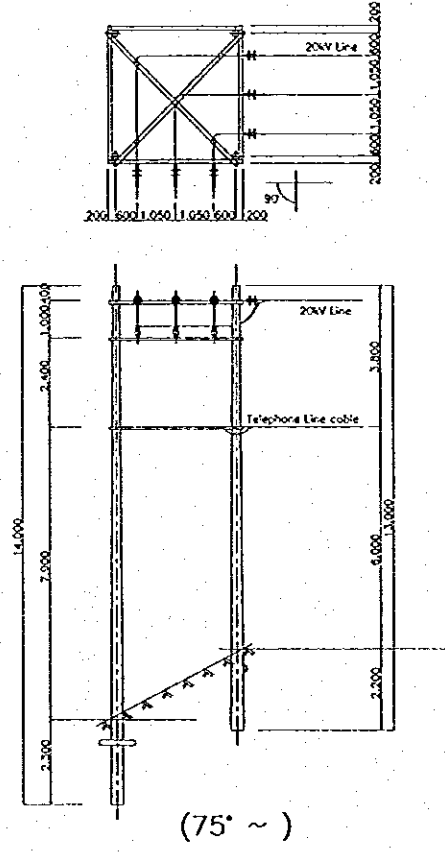
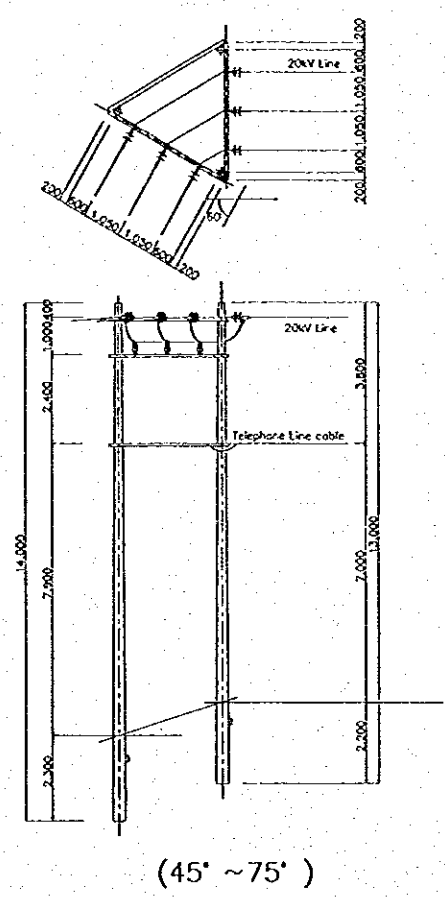
THE REPUBLIC OF INDONESIA MINISTRY OF PUBLIC WORKS DIRECTORATE GENERAL OF WATER RESOURCES DEVELOPMENT AND DIRECTORATE GENERAL OF HUMAN SETTLEMENT		PROVINCE CENTRAL JAVA
JATISUNELUNA FLOOD CONTROL PROJECT COMPONENT : JATIBARANG DAM CONSTRUCTION HYDROPOWER STATION ELECTRO-MECHANICAL FACILITIES STEEL TOWER & CONNECTION DIAGRAM		PROJECT NAME FLOOD CONTROL, URBAN DRAINAGE AND WATER RESOURCES DEVELOPMENT IN SEMARANG IN THE REPUBLIC OF INDONESIA
JAPAN INTERNATIONAL COOPERATION AGENCY JICA INTERNATIONAL COOPERATION AGENCY PACIFIC CONSULTANTS INTERNATIONAL PACIFIC CONSULTANTS INTERNATIONAL		DISTRICT SEMARANG CITY
DESIGNED CHECKED CRYSTAL PLANNING AND DESIGN		DRAWING NO. JD-P1-HS-EM-8 SHEET NO. 215
DATE PROJECT MANAGER		CONTRACT NO.



JUMPER SUPPORT INSULATOR POST SUPPORT INSULATOR

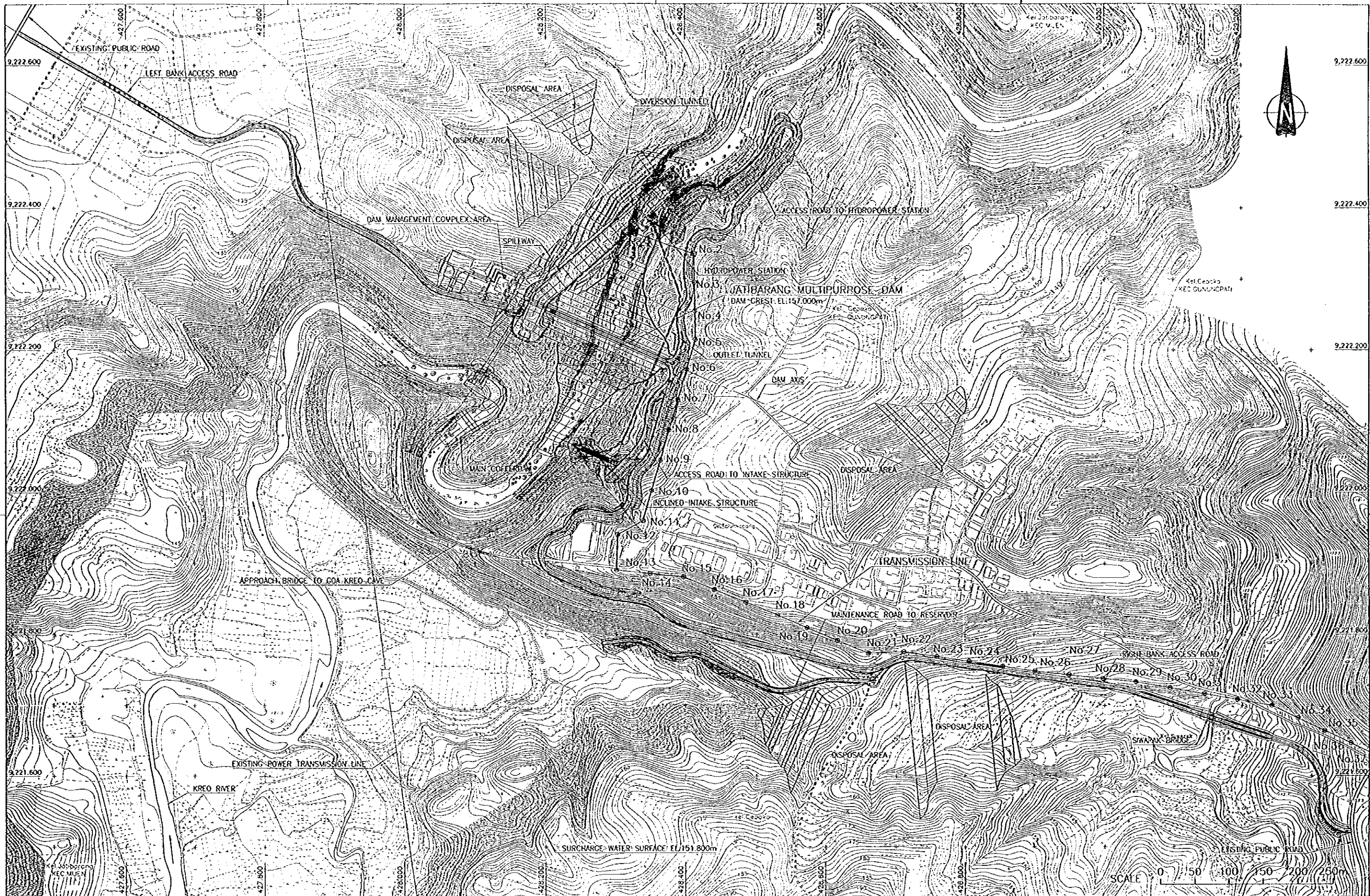


STRINGS FOR TOWER



NO.	DATE	REVISIONS	ORIGINATED	DESIGNED	APPROVED

<b>THE REPUBLIC OF INDONESIA</b> MINISTRY OF PUBLIC WORKS DIRECTORATE GENERAL OF WATER RESOURCES DEVELOPMENT AND DIRECTORATE GENERAL OF HUMAN SETTLEMENT KEPTUNSELURAN FLOOD CONTROL PROJECT COMPONENT : JATIBARANG DAM CONSTRUCTION HYDROPOWER STATION STANDARD ASSEMBLY OF SUPPORTING STRUCTURES		PROVINCE CENTRAL JAWA PROJECT NAME FLOOD CONTROL, URBAN DRAINAGE AND WATER SERVICES DEVELOPMENT IN SEMARANG IN THE REPUBLIC OF INDONESIA DISTRICT SEMARANG CITY DRAWING NO. J0-P1-HS-E-9 SHEET NO. 216 DATE CONTRACT NO.
DESIGNED <i>[Signature]</i> CHECKED <i>[Signature]</i> CHIEF OF PLANNING AND DESIGN PROJECT MANAGER	APPROVED <i>[Signature]</i>	APPROVED <i>[Signature]</i>



## EXTERIOR FINISH SCHEDULE

### EXTERIOR FINISH SCHEDULE FOR HYDROPOWER STATION BUILDING

ITEMS	
<b>ROOF :</b>	
MAIN ROOF	STEEL ROOF
OVERHANG	MORTAR TROWELING W/ WATERPROOF MEMBRANE SHEET
FASCIA	FINISH ON CONCRETE SLAB ROOF
CANOPY	EXTERIOR PAINT FINISH ON CONCRETE SLAB FASCIA
	POLYCARBONATE ROOF SHEET
<b>EXTERIOR WALL :</b>	
WALL	TERRACOTA TILE 50x200 mm
	EXTERIOR PAINT FINISH ON MORTAR TROWEL
COLUMN	TERRACOTA TILE 200x200 mm
	EXTERIOR PAINT FINISH ON MORTAR TROWEL
BEAM	EXTERIOR PAINT FINISH ON MORTAR TROWEL
<b>CORRIDOR SKIRTING :</b>	
EXTERIOR CORRIDOR	MORTAR TROWEL FINISH ON CONCRETE SLAB
	GRAVEL ABOVE THE GROUND
<b>WINDOW AND DOOR :</b>	
FRAME	ANODIZED ALUMINIUM FRAME
LOUVRE	ANODIZED ALUMINIUM LOUVRE
DOOR	ALUMINIUM FRAME W/ CLEAR GLASS LEAVES
	ALUMINIUM ROLLING SHUTTER
	ALUMINIUM FRAME W/ ALUMINIUM SHEET
WINDOW	ANODIZED ALUMINIUM FRAME W/ CLEAR GLASS LEAVES

### EXTERIOR FINISH SCHEDULE FOR GARAGE

ITEMS	
<b>ROOF :</b>	
MAIN ROOF	STEEL ROOF
OVERHANG	MORTAR TROWELING W/ WATERPROOF MEMBRANE SHEET
FASCIA	FINISH ON CONCRETE SLAB ROOF
	EXTERIOR PAINT FINISH ON CONCRETE SLAB FASCIA
<b>EXTERIOR WALL :</b>	
WALL	EXTERIOR PAINT FINISH ON MORTAR TROWEL
COLUMN	TERRACOTA TILE 200x200 mm
	EXTERIOR PAINT FINISH ON CONCRETE COLUMN
BEAM	EXTERIOR PAINT FINISH ON CONCRETE BEAM
<b>CORRIDOR SKIRTING :</b>	
EXTERIOR CORRIDOR	MORTAR TROWEL FINISH ON PLAIN CONCRETE
	GRAVEL ABOVE THE GROUND
<b>WINDOW AND DOOR :</b>	
FRAME	ANODIZED ALUMINIUM FRAME & PAINTED STEEL FRAME
DOOR	STEEL FRAME W/ PAINTED DOUBLE STEEL PLATE
WINDOW	ANODIZED ALUMINIUM FRAME W/ CLEAR GLASS LEAVES

### EXTERIOR FINISH SCHEDULE FOR GUARD HOUSE

ITEMS	
<b>ROOF :</b>	
MAIN ROOF	MORTAR TROWELING W/ WATERPROOF MEMBRANE SHEET
	FINISH ON CONCRETE SLAB ROOF
FASCIA	EXTERIOR PAINT FINISH ON CONCRETE SLAB FASCIA
<b>EXTERIOR WALL :</b>	
WALL	TERRACOTA TILE 50x200 mm, 200x200 mm
	EXTERIOR PAINT FINISH ON MORTAR TROWEL
COLUMN	TERRACOTA TILE 200x200 mm
	EXTERIOR PAINT FINISH ON CONCRETE COLUMN
<b>CORRIDOR SKIRTING :</b>	
EXTERIOR CORRIDOR	NON SLIP CERAMIC TILE 300x300 mm
<b>WINDOW AND DOOR :</b>	
FRAME	ANODIZED ALUMINIUM FRAME
LOUVRE	ANODIZED ALUMINIUM LOUVRE
DOOR	ANODIZED ALUMINIUM FRAME W/ PRG PLYWOOD FINISH
WINDOW	ANODIZED ALUMINIUM FRAME W/ CLEAR GLASS LEAVES

## INTERIOR FINISH SCHEDULE

		FLOOR	BASE	WALL	CEILING	ACCESSORIES	CEILING HEIGHT
<b>JATIBARANG DAM HYDROPOWER STATION COMPLEX</b>							
ROOM NUMBER	ROOM NAMES	CERAMIC TILE 300 mm x 300 mm					
		CERAMIC TILE (NON SLIP) 300 mm x 300 mm					
		CERAMIC TILE (NON SLIP) 200 mm x 200 mm					
		MORTAR TROWELING					
		MORTAR TROWEL FIN. W/ PAINT					
		MORTAR TROWEL FIN. W/ WATER RESISTANT PAINT					
		MORTAR TROWEL FIN. W/ WATER RESISTANT PAINT OVER LAVARORY					
		RAYBAND GLASS PLINT H=100 mm					
		WOODEN SKIRTING H=100 mm					
		MORTAR TROWEL FIN. W/ PAINT					
		CERAMIC TILE 200 x 200 mm					
		GYPSON BOARD 1,200 x 2,400 mm, t = 9 mm					
		WATERPROOF GYPSON BOARD 1,200 x 2,400 mm, t = 9 mm					
		SPANDREL ALUMINIUM					
		ACCESS FLOOR H = 200 mm					
		UNDER FLOOR DUCTING					
		AIR CONDITIONER					
		MIRROR ABOVE THE WASTAFEL					
		RUBBER FLOORING					
		CERAMIC STAIR NOSING 50 x 200 mm					
<b>HYDROPOWER STATION</b>							
1	LOBBY	0		0	0		3,500
2	CONTROL ROOM			0	0	0	3,800
3	CONTROL OFFICE	0		0	0	0	4,000
4	ASSEMBLING ROOM		0	0	0		-
5	CABLE ROOM		0	0	0		-
6	TOILET	0		0	0		3,500
7	LOCKER	0		0	0		3,500
8	STORAGE	0		0	0		-
9	TERRACE		0				-
10	STAIRS	0		0	0		-
11	CANOPY	0			0		3,750
12	CATWALK		0				-
13	DINING ROOM	0		0	0		4,000
<b>GARAGE</b>							
1	GARAGE		0	0			-
2	STORAGE		0	0			-
<b>GUARD HOUSE</b>							
1	GUARD ROOM	0		0	0		2,700
2	TOILET	0		0	0		2,700
3	TERRACE	0		0			-

NO.	DATE	REVISIONS	ORIGINATED	DESIGNED	APPROVED

<b>THE REPUBLIC OF INDONESIA</b> MINISTRY OF PUBLIC WORKS DIRECTORATE GENERAL OF WATER RESOURCES DEVELOPMENT AND DIRECTORATE GENERAL OF HUMAN SETTLEMENT		PROVINCE CENTRAL JAVA
JATUNSELUNA FLOOD CONTROL PROJECT COMPONENT : JATIBARANG DAM CONSTRUCTION JATIBARANG DAM HYDROPOWER STATION COMPLEX EXTERIOR & INTERIOR FINISH SCHEDULE GENERAL		PROJECT NAME FLOOD CONTROL, URBAN HEADGAGE AND WATER RESOURCES DEVELOPMENT IN SEMARANG IN THE REPUBLIC OF INDONESIA DISTRICT SEMARANG CITY
JAWA INTERNATIONAL COOPERATION AGENCY COLLABORATION WITH PACIFIC CONSULTANTS INTERNATIONAL, INC. AND PACIFIC INTERNATIONAL, INC.		DRAWING NO. JD-PT-HC-G-1 SHEET NO. 218
DESIGNED <i>[Signature]</i>	CHECKED <i>[Signature]</i>	DATE CONTRACT NO.
CHIEF OF PLANNING AND DESIGN PROJECT MANAGER		



# FLOOR AREA TABLE

HYDROPOWER STATION BUILDING, 1st FLOOR				HYDROPOWER STATION BUILDING, 2nd FLOOR				GARAGE				GUARD HOUSE							
CODE		FLOOR AREA		CODE		FLOOR AREA		CODE		FLOOR AREA		CODE		FLOOR AREA					
1	Est	ENTRANCE STAIRS	$(600 \times 1,500 \times 2) + (3,600 \times 600 \times 1) + (2,000 \times 1,250)$	6,450 M <sup>2</sup>	1	CO	CONTROL OFFICE	$(1,200 \times 1,600) + (4,000 \times 2,900) + (6,500 \times 7,500)$	62,270 M <sup>2</sup>	1	ST	STORAGE	5,000 x 6,000	30,000 M <sup>2</sup>	1	GR	GUARD ROOM	3,500 x 3,500	12,250 M <sup>2</sup>
2	Te	TERRACE	$(1,100 \times 3,500 \times 1) + (1,000 \times 2,000)$	5,850 M <sup>2</sup>	2	DP	DINING ROOM + PANTRY	4,500 x 2,000	9,000 M <sup>2</sup>	2	RU	RAMP	20,000 x 1,500	30,000 M <sup>2</sup>	2	T	TOILET	1,350 x 1,500	2,025 M <sup>2</sup>
3	L	LOBBY	$(1,650 \times 1,350) + (3,900 \times 3) + (1,600 \times 1,300)$	16,097.5 M <sup>2</sup>	3	OST	OFFICE STAIRS	$(1,350 \times 3,150) + (1,350 \times 3,600)$	9,110 M <sup>2</sup>	3	G	GARAGE	$(6,000 \times 15,000) + (680 \times 20,000) + (1,000 \times 20,000)$	123,600 M <sup>2</sup>					
4	Lr	LOCKER ROOM	2,500 x 2,000	5,000 M <sup>2</sup>															
5	T	TOILET	2,000 x 2,000	4,000 M <sup>2</sup>															
6	CR	CONTROL ROOM	7,500 x 6,225	46,888 M <sup>2</sup>															
7	Cw	CATWALK	$(1,750 \times 15,700) + (1,150 \times 15,700)$	45,530 M <sup>2</sup>															
8	AR	ASSEMBLING ROOM	15,700 x 6,900	108,330 M <sup>2</sup>															
9	ATe	ASSEMBLING TERRACE	1,200 x 7,000	8,400 M <sup>2</sup>															
10	ST	STORAGE	2,780 x 1,350	3,753 M <sup>2</sup>															
11	OST	OFFICE STAIRS	$(2 \times 3,600 \times 1,200) + (2,000 \times 1,200)$	11,040 M <sup>2</sup>															
12	C	CANOPY	$(7,250 \times 3) + (1,500 \times 2,45 \times 2)$	29,100 M <sup>2</sup>															
13	R	RAMP UP	2,700 x 7,000	18,900 M <sup>2</sup>															
<b>1 st. FLOOR TOTAL</b>				<b>±309,260 M<sup>2</sup></b>	<b>2 nd. FLOOR TOTAL</b>				<b>±80,380 M<sup>2</sup></b>	<b>TOTAL</b>				<b>±183,600 M<sup>2</sup></b>	<b>TOTAL</b>				<b>±14,275 M<sup>2</sup></b>
<b>TOTAL</b>				<b>±389,640 M<sup>2</sup></b>	<b>TOTAL</b>				<b>±183,600 M<sup>2</sup></b>	<b>TOTAL</b>				<b>±14,275 M<sup>2</sup></b>					

GRAND TOTAL ±587,515 M<sup>2</sup>

THE REPUBLIC OF INDONESIA MINISTRY OF PUBLIC WORKS DIRECTORATE GENERAL OF WATER RESOURCES DEVELOPMENT AND DIRECTORATE GENERAL OF HUMAN SETTLEMENT					PROJECT NAME FLOOD CONTROL, URBAN DRAINAGE AND WATER RESOURCES DEVELOPMENT IN SEMARANG IN THE REPUBLIC OF INDONESIA	
IRATUNSELUNA FLOOD CONTROL PROJECT COMPONENT : JATIBARANG DAM CONSTRUCTION					DISTRICT SEMARANG CITY	
JATIBARANG DAM HYDROPOWER STATION COMPLEX FLOOR AREA TABLE GENERAL					DRAWING NO. JB-P1-Ge-2 SHEET NO. 219	
SAFARI OPERATIONAL COOPERATION AGENCY PT ANUNIRANG GUSTO IN ASSOCIATION WITH PACIFIC CONSULTANTS INTERNATIONAL AND PACIFIC OPERATIONAL INC.					DATE CONTRACT NO.	
DESIGNED: <i>[Signature]</i> CHECKED: <i>[Signature]</i> CHIEF OF PLANNING AND DESIGN PROJECT MANAGER						
NO.	DATE	REVISIONS	ORIGINATED	DESIGNED	APPROVED	APPROVED