

**MINISTRY OF SETTLEMENT AND REGIONAL DEVELOPMENT
THE REPUBLIC OF INDONESIA**

**FLOOD CONTROL, URBAN DRAINAGE AND
WATER RESOURCES DEVELOPMENT IN SEMARANG**

**COMPONENT B:
JATIBARANG MULTIPURPOSE DAM CONSTRUCTION**

PREQUALIFICATION DOCUMENT

**PACKAGE 1:
JATIBARANG MULTIPURPOSE DAM
INCLUDING APPURTENANT STRUCTURES**

AUGUST 2000



1159984 (2)

TABLE OF CONTENTS

	Page
SECTION 1. BIDDING PROCEDURES	BP-1
1.1 Introduction to Bidding Procedures	BP-1
1.2 Time Schedule	BP-1
1.3 Duties and Taxes	BP-1
1.4 Eligibility to Bid	BP-2
1.5 Joint Operation	BP-2
1.6 Shareholding Structure	BP-2
1.7 Membership	BP-2
1.8 Application Procedure	BP-2
SECTION 2. PREQUALIFICATION REQUIREMENTS	PR-1
2.1 Participants	PR-1
SECTION 3. PREQUALIFICATION PROCEDURES	PP-1
3.1 Submission of Prequalification Documents	PP-1
3.2 Letter of Application and Prequalification Forms	PP-1
3.3 Supporting Documents	PP-3
3.4 Signing of the Prequalification Documents	PP-4
SECTION 4. LETTER OF APPLICATION	LA-1
4.1 Letter of Application	LA-1
SECTION 5. PREQUALIFICATION FORMS	PF-1
5.1 Form No. 5.1 - Statement of Participant	PF-1
5.2 Form No. 5.2 - List of Works to be Subcontracted	PF-4
5.3 Form No. 5.3 - Resume (Curriculum Vitae) of Participant's Key Personnel to be Fully Assigned to the Project	PF-5
5.4 Form No. 5.4 - Reference List	PF-6
5.5 Form No. 5.5 - Performance Records of Completed Works for Past 5 Years by Participant	PF-7
5.6 Form No. 5.6 - Current Contracts Being Undertaken by Participant	PF-8
5.7 Form No. 5.7 - List of Construction Plant and Equipment Available for the Project	PF-9
5.8 Form No. 5.8 - List of Prequalification Forms Completed	PF-10
5.9 Form No. 5.9 - List of Enclosures	PF-11
5.10 Form No. 5.10 - Specimen of Bank's Declaration	PF-12
5.11 Form No. 5.11 - Balance Sheet	PF-13
5.12 Form No. 5.12 - Statement of Profit and Loss	PF-15
5.13 Form No. 5.13 - Amount of Sales Within Last Three Years In US \$ Equivalent	PF-16
5.14 Form No. 5.14 - List of Shareholder Structures	PF-17
5.15 Form No. 5.15 - List of Full-Time Directors	PF-18
SECTION 6. PROJECT OVERVIEW AND SCOPE OF WORK	SW-1
6.1 Overview of the Project	SW-1
6.2 Contract Packages	SW-1
6.3 Relationship between Components and Packages	SW-2
6.4 Scope of Work	SW-2
6.5 Summary of Major Quantities	SW-3
SECTION 7. APPENDICES	

BIDDING PROCEDURES

SECTION 1. BIDDING PROCEDURES

1.1 Introduction to Bidding Procedures

This volume describes procedures for Prequalification of Contractors for Civil Engineering Works included in a project for Flood Control, Urban Drainage and Water Resources Development in Semarang, Component: Construction of the Jatibarang Multipurpose Dam, Package 1: Jatibarang Multipurpose Dam including Appurtenant Structures, located near Semarang City, Central Java Province, Republic of Indonesia.

Package 1 will be awarded as a separate contract in accordance with Documents for Bidding to be issued by :

Directorate General of Water Resources Development,
Ministry of Public Works,
Government of the Republic of Indonesia.

hereinafter known as the Employer.

Bidding will be open to contractors duly pre-qualified by the Employer in accordance with requirements specified in this volume.

Bidding procedure will consist of two stages :

- (a) Prequalification of Contractors.
- (b) Submission of Bids by Qualified Contractors.

1.2 Time Schedule

The schedule for carrying out this Prequalification has been programmed as follows.

- (a)Issue of Prequalification Questionnaire.
- (b)Last date for Participants to request clarification.
- (c)Last date for the Employer to issue addenda to the Prequalification Questionnaire.
- (d) Closing date for receipt of Prequalification Documents by the Employer from Participants.

Notwithstanding any provision contained in this volume the Employer reserves the right to amend this time schedule.

1.3 Duties and Taxes

Prior to submission of a Prequalification Questionnaire Participants shall independently obtain, from Indonesian tax authorities, all necessary information on duties and taxes to be levied on a Contractor with respect to his status as a foreign firm, domestic firm, joint venture or joint operation. He shall also familiarize himself with rules, regulations and procedures regarding exemption from such duties and taxes for a Contractor and his expatriate personnel on construction projects financed by international loans. Unless otherwise exempted by Indonesian tax authorities, the Contractor and his personnel shall pay all duties and taxes in connection with the Contract. Failure to obtain all necessary information in this regard which results in additional costs and expenses, should he be awarded any Contract, shall be entirely at the Participants own risk.

1.4 Eligibility to Bid

Only Contractors incorporated and registered in eligible source countries under the General Untying Scheme, as shown in Attachment VI-1 to the OECF Loan Handbook dated January 1999, shall be eligible to Tender. A copy of the above attachment is included as Appendix 5 to this Prequalification Document.

1.5 Joint Operation

A Participant considering a joint operation with other Contractors shall, prior to submission of a Prequalification Questionnaire, acquaint himself with all relevant information and laws, regulations, orders and decrees of the Indonesian Government as they relate to construction of works by joint operation contractors.

Any neglect or failure by the Participant to fully acquaint himself about all aspects of joint operations shall not, in the event of being awarded the Contract, relieve him of any obligation or responsibility under the Contract nor shall it entitle him to any extension of project time.

1.6 Shareholding Structure

The shareholding structure of a joint venture or joint operation shall not be modified during the period of the Contract except with the prior written approval of the Employer. Modification without such written approval shall permit the Employer to invoke forfeiture of the Contract.

1.7 Membership

The Participant's membership of joint venture/operation or other form of partnership at the time of award of Contract shall be the same as that stated in the Prequalification of Contractor questionnaire. Differences revealed in membership status shall become grounds for rejection or cancellation of award.

1.8 Application Procedure

Any Contractor may apply for Prequalification once for each package either individually or in some form of partnership.

Application for prequalification for the project for Flood Control, Urban Drainage and Water Resources Development in Semarang, Component: Construction of the Jatibarang Multipurpose Dam, Package 1: Jatibarang Multipurpose Dam including Appurtenant Structures, shall not be regarded as an application for prequalification for other construction packages in project for Flood Control, Urban Drainage and Water Resources Development in Semarang. Contractors wishing to apply for prequalification for other construction packages are required to complete separate prequalification applications.

Notwithstanding the above, in order to prevent any individual firm or member of a some other form of partnership from holding contracts for construction packages being implemented concurrently in the project for Flood Control, Urban Drainage and Water Resources Development in Semarang, the Employer reserves the right not to award a contract to any individual firm or member of some other form of partnership which has previously been awarded a contract for a construction package for which a certificate of completion has not been issued.

PREQUALIFICATION REQUIREMENTS

SECTION 2. PREQUALIFICATION REQUIREMENTS

2.1 Participants

In order to satisfy Prequalification requirements participants shall :

- (a) be an individual firm, company or Contractor or a member of some other form of partnership, joint venture or joint operation duly registered under the law of an eligible source country as listed in Appendix 5. International Contractors intending some form of partnership with bonafide Indonesian Contractors may be more favourably considered.
- (b) have been in business as a general contractor for a continuous period of at least three (3) years immediately prior to application for prequalification.
- (c) have no overdue debts of any kind owed to the Revenue or Custom Authorities of the Government of Indonesia
- (d) where a joint venture company is proposed fulfil prequalification requirements under paragraphs (a) (b) and (c) above.
- (e) where some form of partnership with another contractor is proposed, arrange that one member of the partnership act as the Lead Contractor to represent the partnership in all Contractual matters. Prequalification requirements under paragraphs (a), (b) and (c) above shall apply to all member contractors of the Partnership.
- (f) The qualification requirements under paragraphs (a), (b) and (c) above shall be applied to the leading firm and the other member firm(s).
- (g) where there is an intention to sublet part/s of the works under subcontract, such part/s shall be indicated in the Prequalification forms herein.
- (h) have had experience in the construction of earth fill dams
- (i) propose to use specialised subcontractor(s) for generating equipment who have had experience in the design, manufacture, installation and commissioning of the following:
 - i) Horizontal shaft Francis turbines within $\pm 25\%$ of the stated design head and capacity (64.3 m and 1630 kW respectively)
 - ii) Synchronous generators within $\pm 25\%$ of the generator rating of 2000 kW.

The above equipment shall have been in successful operation for more than 2 years and shall be confined by supporting statements from owners or consultants for such installation.

PREQUALIFICATION PROCEDURES

SECTION 3. PREQUALIFICATION PROCEDURES

3.1 Submission of Prequalification Documents

- (a) Prequalification documents shall comprise one (1) Original and five (5) Copies and shall be marked "Original", "First Copy" and so on through the "Fifth Copy". In the event of a discrepancy between any copies and the original, the "Original" shall govern. Each set of documents shall consist of the Prequalification questionnaire and all addenda in its original binding, and any Supporting Documents indicated in clause 3.3 hereof.
- (b) The Prequalification Questionnaire shall be completed using type written or legible hand written text in ink. Alterations shall not be made to any wording. Mistakes made in completing the Questionnaire shall be corrected only by writing over the original entry. All such corrections shall be initialled by the Participant's Representative(s) responsible for signing the Prequalification Questionnaire.
- (c) All documents and correspondence associated with this Prequalification Questionnaire shall be completed in the English Language. Where documents are not prepared in Indonesia they shall be authenticated by a Public Notary and Certified by a Consulate or Commercial Agency of the Government of Indonesia.
- (d) Prequalification Documents shall preferably be submitted either by hand directly from the Participant's Representative(s) or via a commercial courier company employed by the Participant. Prequalification Documents shall reach the Employer not later than 12:00 noon W.I.S.T. onat the following address :

The Tender Committee
Flood Control, Urban Drainage and Water Resources in Semarang
Directorate General of Water Resources Development
Ministry of Public Works, Republic of Indonesia
JRATUNSELUNA River Basin Development Project
Jalan Brigjen Sudiarto No. 375
Semarang 50191
Central Java
INDONESIA
- (e) Documents shall be securely enclosed in one (1) sealed package clearly marked with the Participant's name and address and the following :

Prequalification Documents
Flood Control, Urban Drainage and Water Resources Development in Semarang,
Component: Construction of the Jatibarang Multipurpose Dam ,
Package 1: Jatibarang Multipurpose Dam including Appurtenant Structures

3.2 Letter of Application and Prequalification Forms

The Letter of Application and all Forms shall be completed by the Participants in accordance with the following instructions :

- (a) General : Full name and title of the Representative shall be stated below the Representative's signature.
- (b) Letter of Application for Prequalification :
Participants shall complete this letter, stating whether they are a firm, partnership, company, joint venture or joint operation. They shall also state names of all partners for the partnership, all parent firms or companies for the joint venture, and the leading firm and all other member firms for the joint operation and the full business address of the Participant and/or, if any, his representative in Indonesia.
- (c) Prequalification Form No. 5.1 :
The Participant firm, partnership, company or joint venture, if any shall complete and sign one copy of this Form. If the Participant is a joint venture, each and every parent firm or company must complete, in addition, a separate copy of Form No. 5.1. If the Participant is a joint operation one copy for each member of the same must be filled in.
- (d) Prequalification Form No. 5.2 :
The Participant shall indicate the part(s) of the work intended to be subcontracted.

Participants should note that it shall not be permissible to sub-contract the embankment construction.
- (e) Prequalification Form No. 5.3 :
The Participant shall complete as many copies of this form as actually required to show the experience of the Key Personnel to be fully dedicated to the construction of the works.
- (f) Prequalification Form No. 5.4 :
This form shall contain the names and address in the Republic of Indonesia, or foreign countries, which are able to give technical or financial references about the Participant. One copy of Form No. 5.4 shall be completed for each parent firm or company of the joint venture and for each member of the joint operation.
- (g) Prequalification Form No. 5.5 and No. 5.6 :
This form shall be completed by participants or by members of joint ventures or joint operations as may be the case.
- (h) Prequalification Form No. 5.7 :
The Participant shall indicate in this form the constructional plant and equipment to be used in the execution of the works.
- (i) Prequalification Form No. 5.8 :
The Participant shall indicate the form number and the page number of each prequalification form which has been completed.
- (j) Prequalification Form No. 5.9 :
The participant shall indicate in this list all the annexes to the Prequalification Questionnaire as prescribed in clause 3.3, giving them

a progressive number which shall correspond to the number marked on the relevant documents.

3.3 Supporting Documents

In order to fulfil all requirements the Participant shall annex to the Prequalification Questionnaire the following supporting documents:

- (a) A photo copy of the business registration certificate issued by the relevant National Authority stating the full name of the Participant, board members authorised to represent the Participant, the date and place of registration as a contractor. Where the Participant is a company or a joint venture company, such certificate must also state the scope, paid up capital, duration and date of incorporation of the company and the names of all directors of the board. In the case of a joint venture company, the shareholding structure of the company shall also be stated.
- (b) A statement undertaking to issue the necessary Bank Guarantees or Bonds, in case of award of a contract, for domestic Participants and optionally for International Participants, shall be issued, in accordance with form No. 5.10 herein by a state owned bank of the Republic of Indonesia or other bank or finance institution approved by the Minister of Finance of the Republic of Indonesia. For international Participants the same statement of undertaking may alternatively be issued, in accordance with form No. 5.10 herein by a foreign exchange bank acceptable to Bank Indonesia.
- (c) A financial statement and information, which shall be certified by a public accountant, as follows :
 - i. Balance Sheets, Statements of Profit and Loss, and Amount of Sales of the Participant for the immediately preceding three successive years to be attached. (Form No. 5.11, 5.12 and No. 5.13);
 - ii. Detailed information for any substantial change in the financial affairs of the participant since the date of the end of the accounting period to which the items in the above sub-clause relate which may effect the capability of the Participant to successfully carry out the works;
 - iii. Detailed information of financial resources available as working capital if awarded a contract, including credit, loan or overdraft of a bank or loan from any other sources with supporting evidence.
 - iv. Detailed information of current and future commitments of a contractual or other nature to the extent that they are material in amount. In the case of a joint operation, each member shall fulfil the above documentary requirement.
 - v. Where the Participant is an international contractor or in a joint venture, he shall indicate detailed information of shareholder structure (Form No. 5.14).
- (d) Prequalification Form No. 5.15 :

The Participant shall indicate the nationality of all full-time directors;

- (e) A statement of the Participant that he has no overdue debts towards the Revenue or Customs Authorities of the Government of Indonesia;
- (f) Photo copies of completion certificates issued by the relevant owners or engineers of the projects as listed in Prequalification Form No. 5.5 to demonstrate that such projects were satisfactorily completed by the Participant. Each parent or company of a joint venture and each member of a joint operation shall fulfil this documentary requirement;
- (g) An affidavit duly signed by all parent firms or companies of or all parties to a joint venture declaring that they shall be held jointly and severally liable for obligations arising out of the contract if awarded to the joint venture;
- (h) In case of the Participant being a joint operation, the document duly signed by all its members for establishing the joint operation (or the duly signed document of intent to form the joint operation) in which it is detailed precisely the condition under which it will function, its duration, the sponsor authorised to represent it, to sign in its name all documents including the bid and the contract, and to take full responsibilities of the works, and the shares of participation of each member thereof. Such documents shall contain particularly the obligation of all its members to be jointly and severally liable for the obligations arising out of the contract in case of award and that such joint and separate liability is not impaired by the special position of the leading firm. A separate statement shall also be made by the leading firm declaring that he, in addition to the liabilities mentioned above, shall be entirely responsible for the Works and execution of the contract;
- (i) The duly certified power of attorney giving power to a person or persons to sign on behalf of the Participant;
- (j) Any technical document which the Participant considers suitable to present in support of his application for Prequalification.

3.4 Signing of the Prequalification Documents

The signature of each Participant required for his statement and information to be presented in the Prequalification shall be as follows:

- (a) Where the Participant is a firm, partnership or company (including a joint venture), one or more legal representatives of such firms, partnership or company shall sign. A power of attorney granting authority to sign by the said representative(s) shall be enclosed with the Prequalification Documents;
- (b) Where the Participant is a joint operation, the leading firm shall be authorized by all other members to sign all documents for all joint operation through one legal representative to sign for the joint operation. This authorization shall be enclosed with the Prequalification Documents.

LETTER OF APPLICATION

SECTION 4. LETTER OF APPLICATION

4.1 Letter of Application

The Tender Committee
Flood Control, Urban Drainage and Water Resources in Semarang
Directorate General of Water Resources Development
Ministry of Public Works, Republic of Indonesia
JRATUNSELUNA River Basin Development Project
Jalan Brigjen Sudiarto No. 375
Semarang 50191
Central Java
INDONESIA

Sir,

Insert full name & title In accordance with the Prequalification Questionnaire, the undersigned Representative

Insert name and address of the Participant Legally authorized to act in name and on account of the Firm
Company
Partnership.....
.....

Insert name of firm and address of parent firms or company Joint venture company
Composed : a
b.
c.
d.

Insert name of firm and address of parent firms or company Joint operation
Composed : a. Leading firm
and the following other firms :
b.
c.
d.

Insert type,
place and
date of the
power of
attorney

by means of certified power of attorney
.....

Attached to these documents, hereby apply for prequalification for the construction of the project for Flood Control, Urban Drainage and Water Resources Development in Semarang, Component: Construction of the Jatibarang Multipurpose Dam, Package 1: Jatibarang Multipurpose Dam including Appurtenant Structures.

By this letter, the undersigned Representative, acting in name on account of the Participants, declares :

- a. To guarantee the truthfulness and exactness of all the statements and answers made in the Prequalification Questionnaire and in the attached documents;
- b. To authorise the Employer or his delegate to effect any investigation to prove the truthfulness of the statements and documents submitted and to obtain clarification and information on the technical and economic conditions of the Participants;
- c. To accept unconditionally the dates and periods fixed or to be fixed by the Employer for Prequalification and Tendering, renouncing consequently to ask for extension;
- d. To accept unconditionally the procedure adopted for the Bidding, the documents of the same and to renounce, consequently, to any claim;
- e. To have the widest authority to execute agreements and to effect all the necessary formalities for the Bid, including the signature of the Contract, by virtue of the power of attorney granted;
- f. To give the Employer the full right without any justifications :
 - 1. To disqualify any Participant who does not meet the requirements indicated in the Prequalification Document or does not submit the required documentation's or is not acceptable to the Employer for reasons in this opinion to be substantial;
 - 2. Not to accept any my claim regarding either procedure or the results of the prequalification;

Insert Nos.
and date of
addenda

- g. To certify that the following addenda issued by the Employer have been received :
No..... Date.....

Insert mail,
cable, telex
address and
telephone
and fax
numbers

h. To indicate the address in which he fixes his legal domicile to the effects of his application, to which the Employer may direct his correspondence :

.....

Insert
Representative
in Indonesia

.....

.....

.....

.....
(Place and Date)

.....
(The Representative)

PREQUALIFICATION FORMS

SECTION 5. PREQUALIFICATION FORMS

5.1 Form No. 5.1 - Statement of Participant

Package 1: Jatibarang Multipurpose Dam including Appurtenant Structures

Insert name of legal domination 1. Name (legal domination).....

Insert address of Head Office with mail cable, fax telex 2. Address of the Head Office

Insert place, day, month, year 3. Date of establishment according to Articles of Association or By-Laws

.....
Place	Day	Month	Year

Insert original currency and equivalent US dollars 4. Nominal Capital

original currency	equivalent in US dollars
-------------------	--------------------------

Insert date original currency and equivalent in US dollars Fully paid-up Capital after

original currency	equivalent in US dollars
-------------------	--------------------------

Date

Insert original currency and equivalent in US dollars Statement of Capital resources (if not a company)

original currency	equivalent in US dollars
-------------------	--------------------------

Insert original currency and equivalent in US dollars Exchange rate adopted for the equivalent in US \$

original currency	equivalent in US dollars
-------------------	--------------------------

5. Branch of Specialization

- Field of activities

1) Main field of activities *)

2) Other field of activities

*) Which is (are) your field of activities among the following works :

- a. River Improvement Work
- b. Dam Construction Work
- c. Road and Bridge Work
- d. Other Civil Work

Insert Nos. of engineers, technical staff, foremen and supervisors, and other labour

6. Average number staff and labour employed over the past year

- a. Engineers
- b. Other Technical Staff employed on estimating, draughting and other technical office work technical office work
- c. Foremen and Supervisors
- d. Other labour

Insert Nos. of staff, engineers etc. separated into Indonesian and Non Indonesian

Indicate estimated number of staff and labour who would be employed to carry out works for Package 1: Jatibarang Multipurpose Dam including Appurtenant Structures.

	Indonesia	Non Indonesia
a. Administrative
b. Engineer
c. Other Technical Staff
d. Foremen and Supervisors
e. Labour

and submit Resume Curriculum Vitae (CV), on sheets provided, for the principal staff who would be employed on the works such as Project Manager, Resident Engineer, Superintendent.

Insert location of branch offices

7. Places in which its branch offices operate especially in Indonesia and South-East Asia.

Insert
resources
available

8. Back up services for this Project (internal or external), if any

.....
(Place and Date)

.....
(The Representative)

This form also applies to parent firms or companies of Joint Venture
and to each member of a Joint Operation.

5.2 Form No. 5.2 - List of Works to be Subcontracted

Package 1: Jatibarang Multipurpose Dam including Appurtenant Structures

No.	(1) Part of Works	(2) Description	(3) Remarks

.....
(Place and Date)

.....
(The Representative)

5.3 Form No. 5.3 - Resume (Curriculum Vitae) of Participant's Key Personnel to be Fully Assigned to the Project

Package 1: Jatibarang Multipurpose Dam including Appurtenant Structures

Insert name of firm Partnership, Company, Joint Venture or Joint Operation

Insert name, age, last education, present position and proposed position
 Full Name.....Age..... Latest Education
 Present Position in the Firm
 Proposed Position in the Project

	<u>Experience (Years)</u>	<u>Performed Work</u>	<u>Responsibility</u>
Insert details of work experience

Note : Use one form for each person

5.4 Form No. 5.4 - Reference List

Package 1: Jatibarang Multipurpose Dam including Appurtenant Structures

Insert
firm,
partnership,
company,
joint venture
or joint
operation

No.	Name	Address
.....
.....
.....
.....
.....
.....
.....
.....
.....

.....
(Place and Date) (The Representative)

Note : This form also applies to parent firms or companies of a Joint Venture and to each member of a Joint Operation.

5.5 Form No. 5.5 - Performance Records of Completed Works for Past 5 Years by Participant

Package 1: Jatibarang Multipurpose Dam including Appurtenant Structures
 3)

No.	Years of Execution (month & year) Start \ Completed	Name & Location of Work	Name & Address of owner	Main or Sub-Contractor or member of joint operation	Contract or Subcontract amount in US \$ equivalent (2)	Description of Works (1)

- NOTES : 1). Reference must be attached in accordance with the requirements of item 3.3 (f).
 2). Do not list details of contracts having values less than US \$ 400,000
 3). Insert name of firm, partnership or joint venture.

..... (Place and Date)
 (The Representative)

5.6 Form No. 5.6 - Current Contracts Being Undertaken by Participant

Package 1: Jatibarang Multipurpose Dam including Appurtenant Structures

..... 3)

No.	Type of Works	Name & Location of Work	Name & Address of Owner	Starting and Expecting Completion Date	Contract or Subcontract amount in US \$ (2)	Percentage of Physical Completion	Description of Works (1)

- NOTES: 1). Reference must be attached in accordance with item 3.1.3
 2). Do not list details of contracts having values less than US \$ 400,000
 3). Insert name of firm, partnership or joint venture.

.....
 (Place and Date)
 (The Representative)

5.7 Form No. 5.7 - List of Construction Plant and Equipment Available for the Project

Package 1: Jatibarang Multipurpose Dam including Appurtenant Structures

Item No.	Description	Unit No.	Capacity or Output	Trade Mark and Type	Year of Manufacture	Present Conditions (in %)	Present Location	Ownership *)

*) State whether owned, rented, hire-purchased, or to be rented or hire-purchased. If rented/hire-purchased (or to be rented/hire-purchased) include rental/hire-purchase agreement (or letter of intent).

.....
(Place and Date)
(The Representative)

5.8 Form No. 5.8 - List of Prequalification Forms Completed

Package 1: Jatibarang Multipurpose Dam including Appurtenant Structures

Please indicate the forms and pages completed

FORM No.	FIRM, PARTNERSHIP, COMPANY	PAGES No.
.....
.....
.....
.....
.....
.....
.....
.....
.....
.....
.....
.....
.....
.....
.....
.....
.....
.....
.....

.....
(Place and Date)

.....
(The Representative)

5.10 Form No. 5.10 - Specimen of Bank's Declaration

Package 1: Jatibarang Multipurpose Dam including Appurtenant Structures

The Tender Committee
Flood Control, Urban Drainage and Water Resources in
Semarang
Directorate General of Water Resources Development
Ministry of Public Works, Republic of Indonesia
JRATUNSELUNA River Basin Development Project
Jalan Brigjen Sudiarto No. 375
Semarang 50191
Central Java
INDONESIA

Gentlemen,

Insert
name and address
of the Bank

This Bank.....

Insert name
and address of
firm, partnership,
company, joint
venture or joint
operation

upon request of

Insert firm,
partnership,
company, joint
venture or joint
operation

irrevocably undertakes to issue in favour of Directorate
General of Water Resources Development, Ministry of Public
Work, Republic of Indonesia, and to their full satisfaction, the
guarantees assuring that in case of award of a contract the
above mentioned
will faithfully perform the Contract for project for Flood
Control, Urban Drainage and Water Resources Development
in Semarang, Component : Construction of the Jatibarang
Multipurpose Dam, Package 1: Jatibarang Multipurpose Dam
including Appurtenant Structures

.....
(Place and Date)

.....
(The Representative)

5.11 Form No. 5.11 - Balance Sheet

Package 1: Jatibarang Multipurpose Dam including Appurtenant Structures

Required: Three (3) separate Balance Sheets for the three years, ending 31 December, immediately preceding the year of application for Prequalification. Refer Clause 3.3 (c) (i) herein.

<u>Asset</u>	All in US \$
A. <u>Current Assets</u>	Equivalent (Exchange rate used US \$ = _____)
1. Cash on hand	\$
2. Cash in Bank	\$
3. Account Receivable	\$
4. Stock and bonds at present market value ...	\$
5. Other current Asset :	
a.	\$
b.	\$
c.	\$
d.	\$ (+)
	\$ (+)
Total Current Assets	\$ (A)
 B. <u>Fixed Assets</u>	
1. Cost of Construction.....	\$
2. Land.....	\$
3. Building (Net).....	\$
4. Construction Equipment (net)	\$
5. Office Equipment (net)	\$
6. Vehicle (net)	\$
7. Other Fixed Asset :	
a.	\$
b.	\$
c.	\$
d.	\$ (+)
	\$ (+)
Total Fixed Assets	\$ (B)
Total Assets	\$ (A&B)

Liabilities and Capital

A. Current Liabilities

1. Accounts Payable	\$
2. Payable to Bank	\$
3. Notes Payable	\$
4. Other Current Liabilities :	
a. \$	
b. \$	
c. \$	
d. \$	(+)
	\$ (+)
Total Current Liabilities	\$ (A)

B. Long-term Debt \$ (B)

C. Capital

1. Stock Holders	\$
2. Retained Earning	\$
3. Allowance/Reserve	\$
4. Profit for the Year	\$
5.	\$
6.	\$ (+)
Total Capital	\$ (C)
 (+)
Total Liabilities and Capital	\$ (A+B+C)

.....
(Place and Date)

.....
(The Representative)

Certified by

Registered Public Accountant, and further certified according to Clause 3.1.(3) hereof when prepared abroad.

Date

5.12 Form No. 5.12 - Statement of Profit and Loss

Package 1: Jatibarang Multipurpose Dam including Appurtenant Structures

Required: Three (3) separate Statements of Profit and Loss for the three years, ending 31 December, immediately preceding the year of application for Prequalification. Refer Clause 3.3 (c) (i) herein.

A. Revenue		\$	(A)
B. Cost of Construction :			
1. Finished Work	\$		
2. Work in Progress	\$ _____ (+)		
		\$ _____	(B)
		Gross Profit/Loss	\$ (A-B)
C. Operation Expenses	\$		
1. Sales Expenses	\$		
	\$		
	\$ _____ (+)		
	Total Sales Expenses	\$	(C1)
2. General & Administration Expenses	\$		
	\$		
	\$		
	\$ _____ (+)		
	Total General & Administration Expenses	\$	(C2)
	Total Operation Expenses	\$	(C = C1+C2)
	Net Profit / Loss Operation before taxes	\$	(A-B)-(C)
D. Other Revenue	\$		
	\$		
	\$ _____ (+)		
		\$	(D)
E. Other Expenses	\$		
	\$		
	\$ _____ (+)		
		\$	(E)
F. Nett Profit / Loss before taxes		\$	(D-E) (F) = (A-B)- (C)-(D-E)
G. Taxes		\$	(G)
H. Nett Profit / Loss after taxes		\$	H = F - G

.....
(Place and Date)

.....
(The Representative)

5.13 Form No. 5.13 - Amount of Sales Within Last Three Years In US \$ Equivalent

Package 1: Jatibarang Multipurpose Dam including Appurtenant Structures

Required: Three (3) separate Amounts of Sales for the three years, ending 31 December, immediately preceding the year of application for Prequalification. Refer Clause 3.3 (c) (i) herein.

Year	Amount (US \$)

.....
(Place and Date)

.....
(The Representative)

5.14 Form No. 5.14 - List of Shareholder Structures

Package 1: Jatibarang Multipurpose Dam including Appurtenant Structures

No.	Name of Shareholder	Nationality of Shareholder	% of Shares	Remarks

.....
(Place and Date)

.....
(The Representative)

5.15 Form No. 5.15 - List of Full-Time Directors

Package 1: Jatibarang Multipurpose Dam including Appurtenant Structures

No.	Name of Directors	Position	Nationality

.....
(Place and Date)

.....
(The Representative)

PROJECT OVERVIEW AND SCOPE OF WORK

SECTION 6. PROJECT OVERVIEW AND SCOPE OF WORK

6.1 Overview of the Project

The city of Semarang suffers frequent flooding in the wet season and water shortage in the dry season. Progressing land subsidence, mainly caused by ground water extraction, further exacerbates flooding in low-lying areas in the North of the city.

To mitigate these problems and to enhance economic development the project for Flood Control, Urban Drainage and Water Resources in Semarang has been brought about with the assistance from the Government of Japan.

The project has been broadly divided into the following three components which address different aspects of the project. The components are as follows:

- West Floodway / Garang River Improvement;
- Urban Drainage System Improvement; and
- Construction of the Jatibarang Multipurpose Dam

The functions of the Construction of the Jatibarang Multipurpose Dam component of the project will be for flood control, public water supply for Semarang City and for hydropower generation.

6.2 Contract Packages

For the purposes of implementation each of the three components has been subdivided into contract packages. There is a total of 8 packages of work in the project with the breakdown as shown in the following table. The package for the work covered by this document is highlighted to clarify its position in relation to the project components and to other packages.

COMPONENT	DESCRIPTION OF PACKAGES
West Floodway / Garang River Improvement	Package 1: West Floodway and Garang River Improvement Works Package 2: Reconstruction of Simongan Weir Package 3: Raising of Railway Bridge over West Floodway
Urban Drainage System Improvements	Package 1: Semarang River Drainage System Improvement Package 2: Asin River Drainage System Improvement Package 3: Bandarharjo Drainage System Improvement
Construction of the Jatibarang Multipurpose Dam	Package 1: Jatibarang Multipurpose Dam including Appurtenant Structures Package 2: Operation and Maintenance Buildings and Goa Kreo Bridge

6.3 Relationship between Components and Packages

In general, from the point of view of construction, there is no relationship nor interface between packages of different components.

This package will have an interface with Package 2: Operation and Maintenance Buildings and Goa Kreo Bridge which has two construction sites within the Package 1 site.

The completion of earth works for and the construction of an access road to the Jatibarang Dam Management Complex is included within the scope of work of this package 1. This work will be required to be completed within a designated time of the award of the contract for Package 1 (around 12 months) in order that work on Package 2, by others, can commence in accordance with the overall project schedule.

6.4 Scope of Work

The work comprises the completion of the whole of the works for the Jatibarang Multipurpose Dam except for the completion of building and site works for the Jatibarang Management Complex and the Goa Kreo Bridge which are to be completed under Package 2, by others.

The scope of work for Package 1 includes but is not limited to the following:

ITEM	DETAILS	
Centre Core Rockfill Dam:	Height above Foundation	77 m
	Crest Length	200 m
	Crest Width	10 m
Spillway :	Crest Width of Service Spillway	15 m
	Total Crest Width	60 m
	Length	307 m
	Stilling Basin	24 m x 60 m
	Spillway Bridge (PC Girder Type)	24 m x 5 m
Outlet Facilities:	Tunnel with 2 r cross section	2.4 m w and h Length 393 m
	Inclined-type Intake Structure	
	Bulkhead Gate	2.0 m x 1.4 m
	Emergency Gate	2.0 m x 1.4 m
	Steel Outlet Pipe in tunnel	393 m x 1.4 m dia
	Control Gates	650 and 250 mm dia

Diversion Works:	Tunnel with 2r cross section	5.8 m w and h
	Tunnel Length	441 m
	Tunnel Gradient	1/30
	Temporary Cofferdam	
Hydropower Generation Works:	Power Station Building	450 m ²
	Horizontal Francis Turbine	64.7 m, 1.64 MW
	Horizontal Generator	2 MVA 50 Hz, 750 rpm
	Switchgear and cables	
	Control Equipment	
	Overhead Crane	
	Substation Switchgear	
	Transmission Lines including towers and poles	
Roadworks	Permanent Access Roads	3.8 km
Other	Earthworks for Jatibarang Dam Management Complex	
	Relocation of Existing 150 kV Power Line	3.4 km
	Provision of Maintenance Equipment	

6.5 Summary of Major Quantities

A summary of the quantities of the major items of work is shown in Appendix 4 for the information of prequalification participants.

APPENDICES

SECTION 7. APPENDICES

The following data is appended hereto :

Appendix 1 General Map

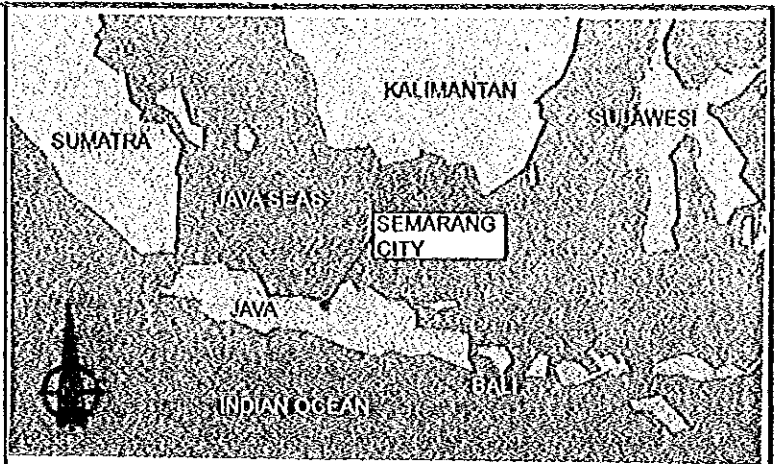
Appendix 2 Location of Project Site

Appendix 3 General Project Plan

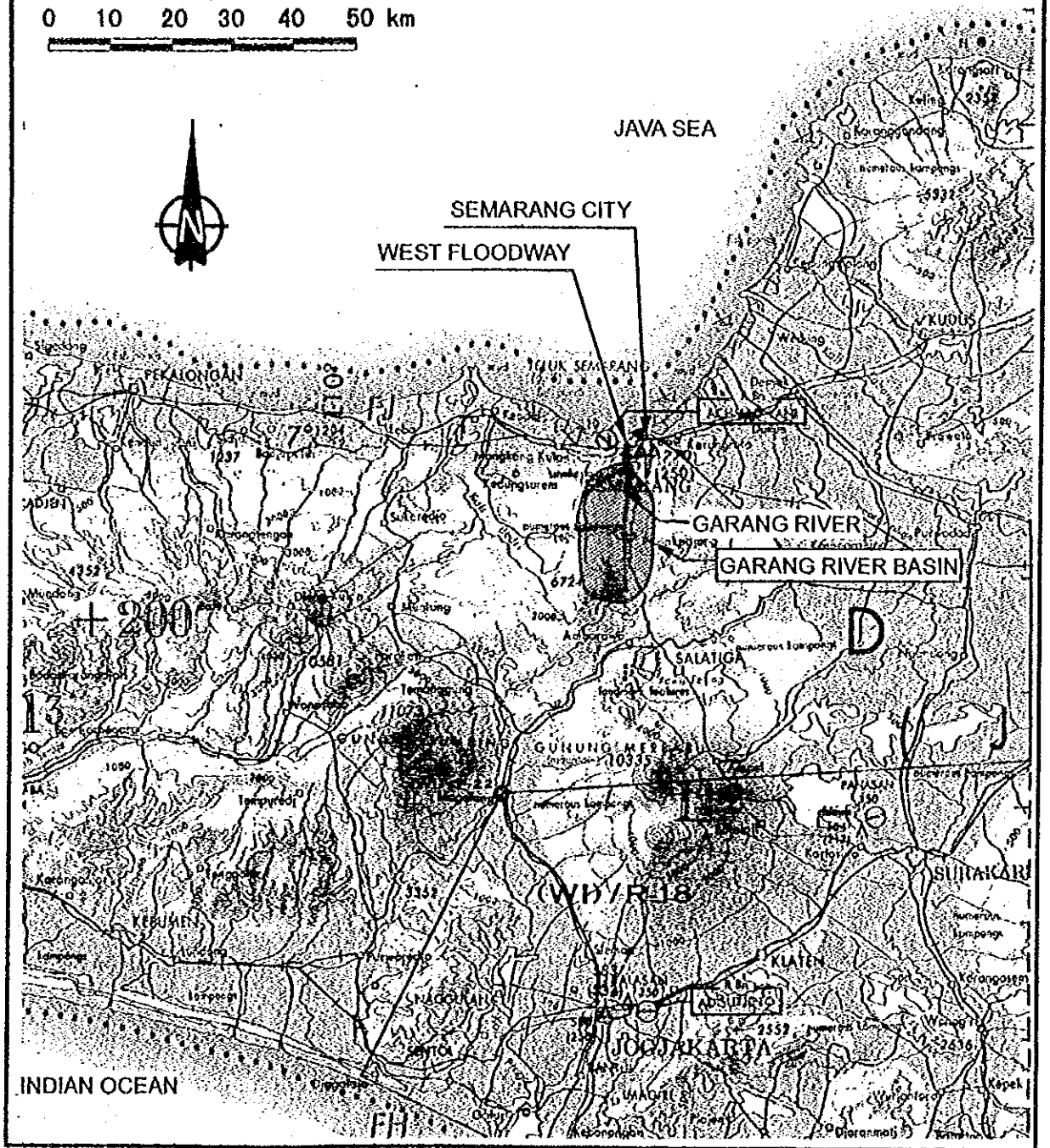
Appendix 4 Summary of Major Quantities

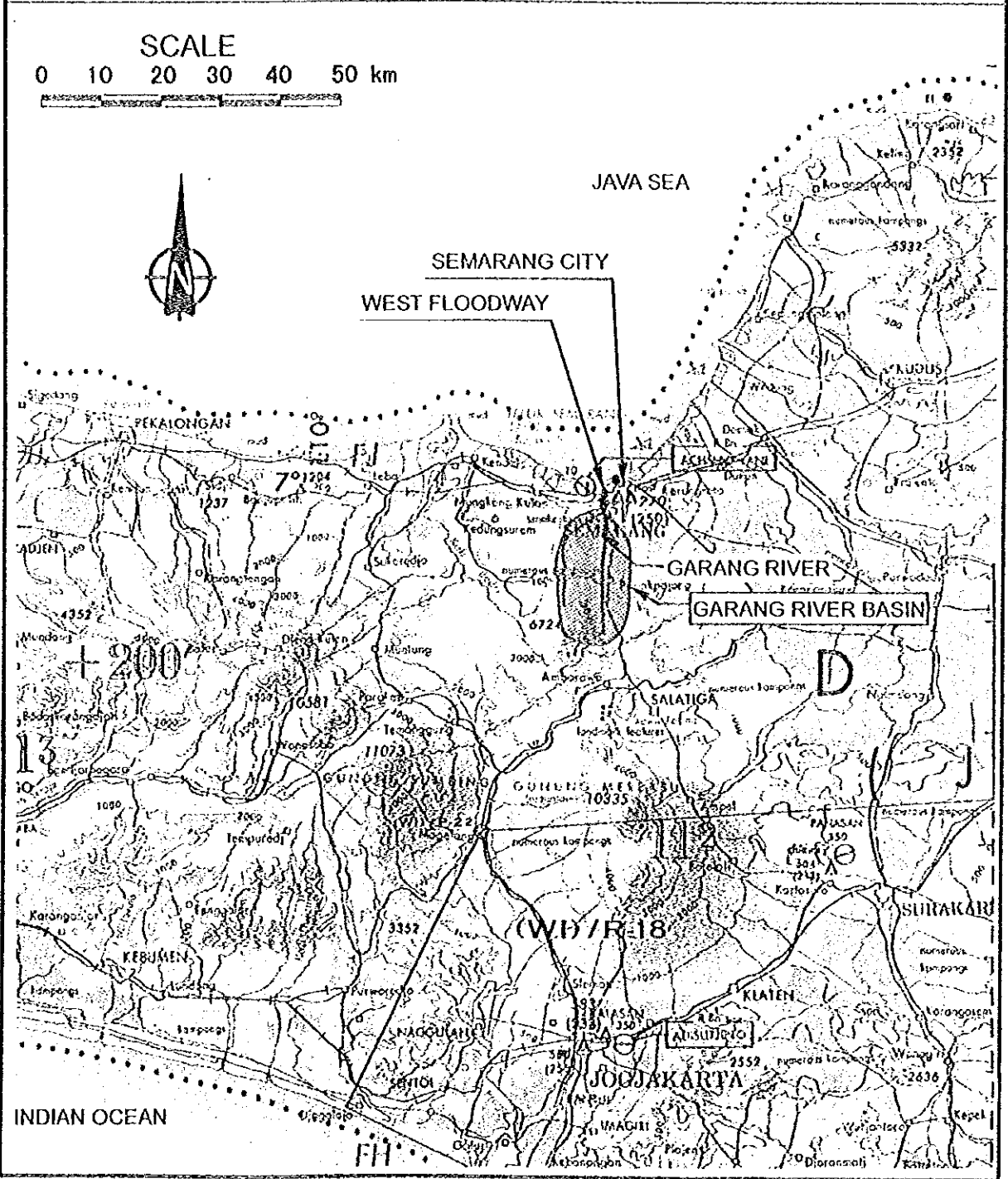
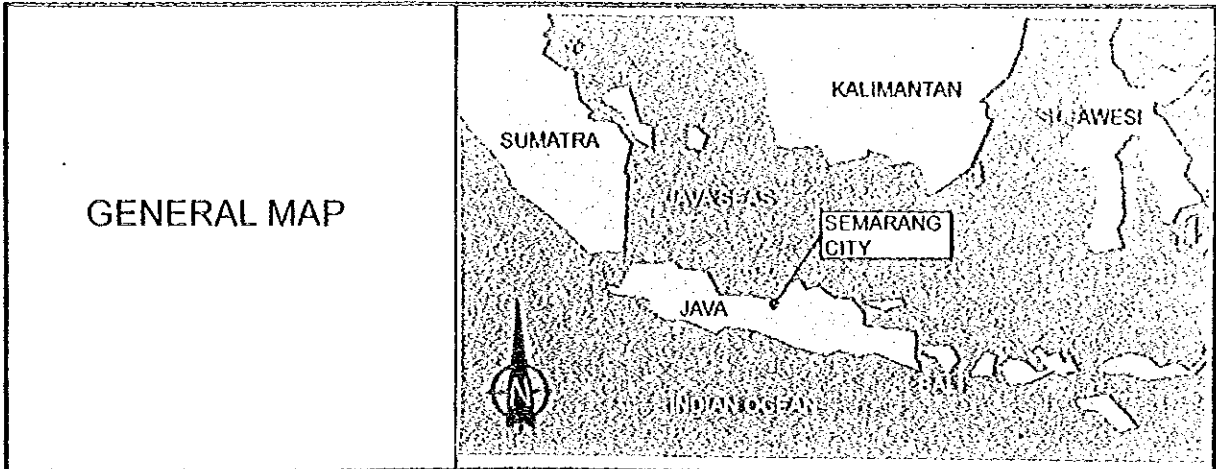
Appendix 5 List of Eligible Source Countries

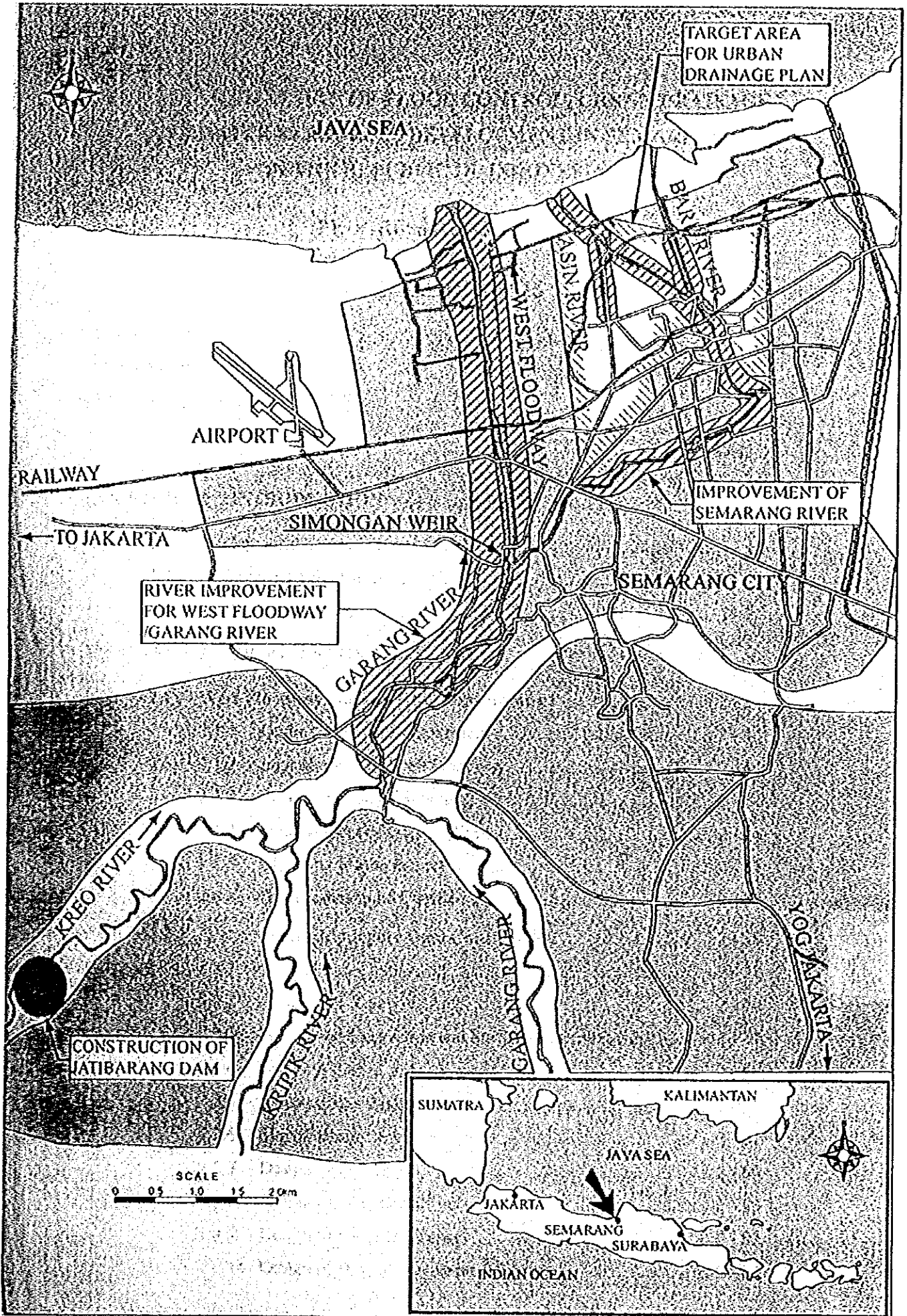
GENERAL MAP



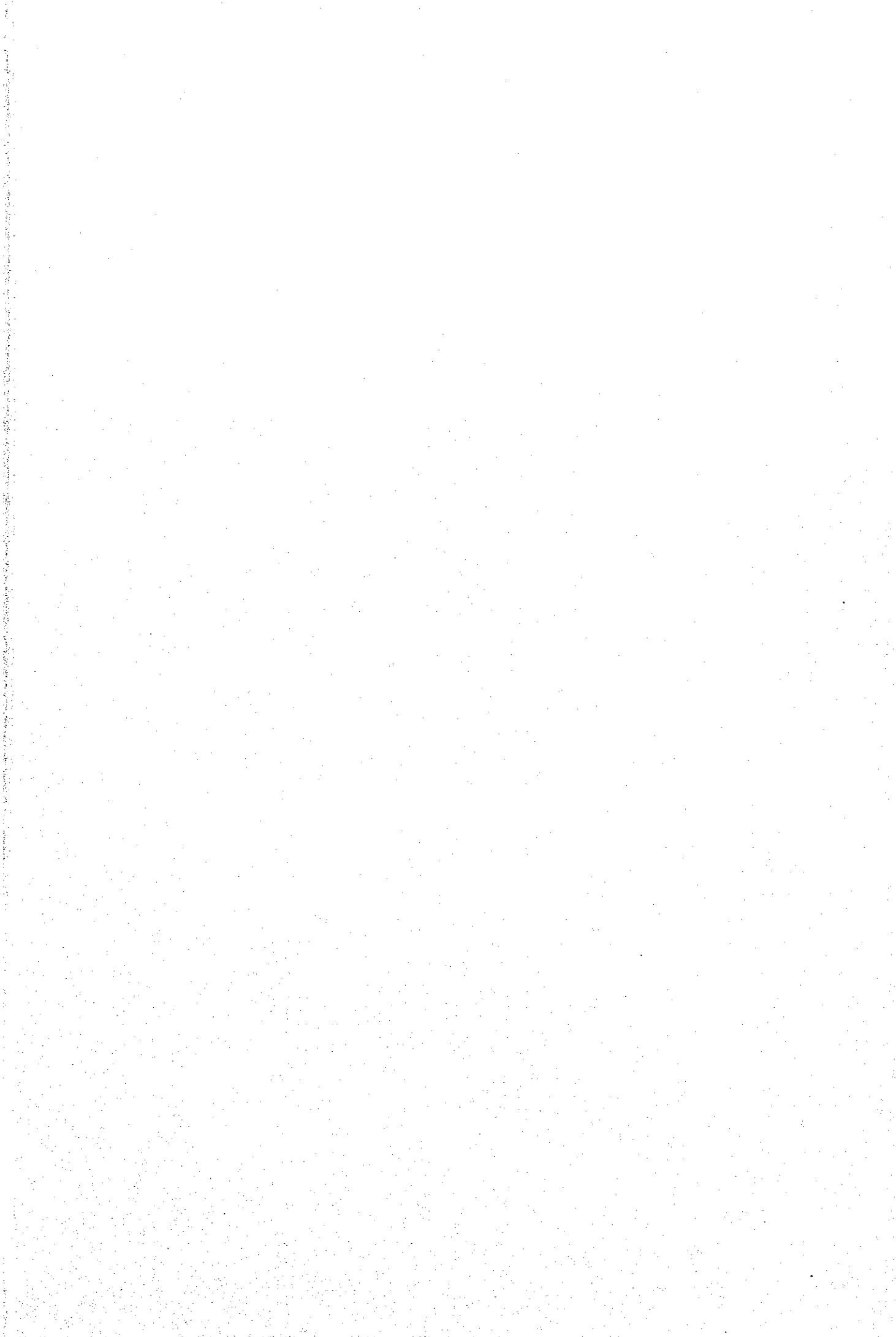
SCALE
0 10 20 30 40 50 km







Appendix 2





NOTES

1. THE MAJOR WORKS TO BE CARRIED OUT UNDER THE CONTRACT PACKAGE 1 SHALL CONSIST OF, BUT NOT BE LIMITED TO, THE CONSTRUCTION OF JATIBARANG MULTIPURPOSE DAM INCLUDING THE APPURTENANT STRUCTURES SUCH AS SPILLWAY, OUTLET FACILITIES, DIVERSION FACILITIES, HYDROPOWER STATION, ACCESS ROADS AND RELOCATION OF EXISTING POWER TRANSMISSION LINE.
2. THE MAJOR WORKS TO BE CARRIED OUT UNDER THE CONTRACT PACKAGE 2 SHALL CONSIST OF, BUT NOT BE LIMITED TO, THE CONSTRUCTION OF THE BUILDINGS AND EXTERNAL WORKS IN THE DAM MANAGEMENT COMPLEX, AND THE APPROACH BRIDGE TO GOA KREO CAVE.
3. THE EXCAVATION WORKS OF THE DAM MANAGEMENT COMPLEX AREA SHALL BE CARRIED OUT BY THE PACKAGE 1 CONTRACTOR.

NO.	DATE	REVISION	OCCUPIED	DESIGNED	APPROVED

THE REPUBLIC OF INDONESIA MINISTRY OF PUBLIC WORKS DIRECTORATE GENERAL OF WATER RESOURCES DEVELOPMENT AND DIRECTORATE GENERAL OF HUMAN SETTLEMENTS PIAUTUNBELA FLOOD CONTROL PROJECT COMPONENT - JATIBARANG DAM CONSTRUCTION GENERAL DRAWINGS GENERAL PROJECT PLAN		PROVINCE CENTRAL JAVA PROJECT NAME FLOOD CONTROL, DRAINAGE AND WATER RESOURCES DEVELOPMENT IN SEMARANG BY THE REPUBLIC OF INDONESIA DISTRICT SEMARANG CITY DRAWING NO. J2-P1-00-PI-2 SHEET NO. 2 DATE CONTRACT NO.
JAPAN INTERNATIONAL COOPERATION AGENCY JICA JICOP PACIFIC CONSULTANTS INTERNATIONAL P.C.I. CHIEF OF PLANNING AND DESIGN PROJECT MANAGER	CHECKED CHECKED APPROVED	DATE CONTRACT NO.

APPENDIX 4

Package 1: Jatibarang Multipurpose Dam including Appurtenant Structures

SUMMARY OF MAJOR QUANTITIES

The following is a summary of the major work items to be completed in this package :

Item	Unit	Quantity
General (mobilisation, Demobilisation and Establishment)	L.S	
Surface Excavation	m ³	700,000
Tunnelling	m ³	21,000
Shotcrete	m ³	1,300
Rotary Drilling	m	26,000
Dam Embankment Impervious Zone	m ³	119,000
Dam Embankment Semi-Pervious Zone	m ³	82,000
Dam Embankment Pervious Zone	m ³	601,000
Reinforcement Bars	tonne	1,3 00
Concrete (Various grades)	m ³	76,300
Excavation for Road Construction	m ³	152,000
Hot Asphalt Surface Coarse	m ²	17,000
Water Control Plant	Set	Various
Hydraulic Turbine	Set	1
Generator	Set	1
Relocation of Power Transmission Line	L.S	

Source : OECF Loan Handbook
dated January, 1999

APPENDIX 5

LIST OF ELIGIBLE SOURCE COUNTRIES (Subject to Change)

1. General Untying

Under general untying scheme, the eligible source countries are all countries and areas

