

**TABLES**

**CHAPTER 13**

**PROJECT IMPLEMENTATION**

**LIST OF TABLES**

**Chapter 13**

Table 13.2.1 Disbursement Schedule ..... T-13-1

Table 13.2.1 DISBURSEMENT SCHEDULE

Work Name	Currency	2000	2001	2002	2003	2004	2005	Total
Package-1	Rupiah	0	55,879,189,400	86,628,610,591	137,631,892,156	202,195,013,201	0	482,334,705,348
	Converting into Yen	0	925,232,766	1,434,373,509	2,278,872,288	3,347,891,286	0	7,986,369,849
Package-2	Rupiah	0	0	1,225,446,496	4,095,545,004	808,744,605		6,129,736,105
	Converting into Yen	0	0	20,290,617	67,812,946	13,390,978	0	101,494,541
Administration Cost	Rupiah	0	4,407,588,567	5,082,466,112	8,199,107,935	11,744,019,047	0	29,433,181,661
	Converting into Yen	0	72,979,680	84,154,123	135,758,650	194,454,346	0	487,346,799
Engineering Service Cost	Rupiah	838,679,050	4,701,203,147	7,391,298,516	11,923,749,804	17,079,022,000	0	41,933,952,517
	Converting into Yen	13,886,625	77,841,272	122,383,156	197,430,280	282,789,907	0	694,331,240
Compensation Cost	Rupiah	0	18,462,842,957					18,462,842,957
	Converting into Yen	0	305,702,846	0	0	0	0	305,702,846
Total	Rupiah	838,679,050	83,450,824,071	100,327,821,715	161,850,294,898	231,826,798,853	0	578,294,418,588
	Converting into Yen	13,886,625	1,381,756,564	1,661,201,405	2,679,874,164	3,838,526,517	0	9,575,245,275

Note : All costs include price and physical contingencies and tax.

**FIGURES**

**CHAPTER 13**

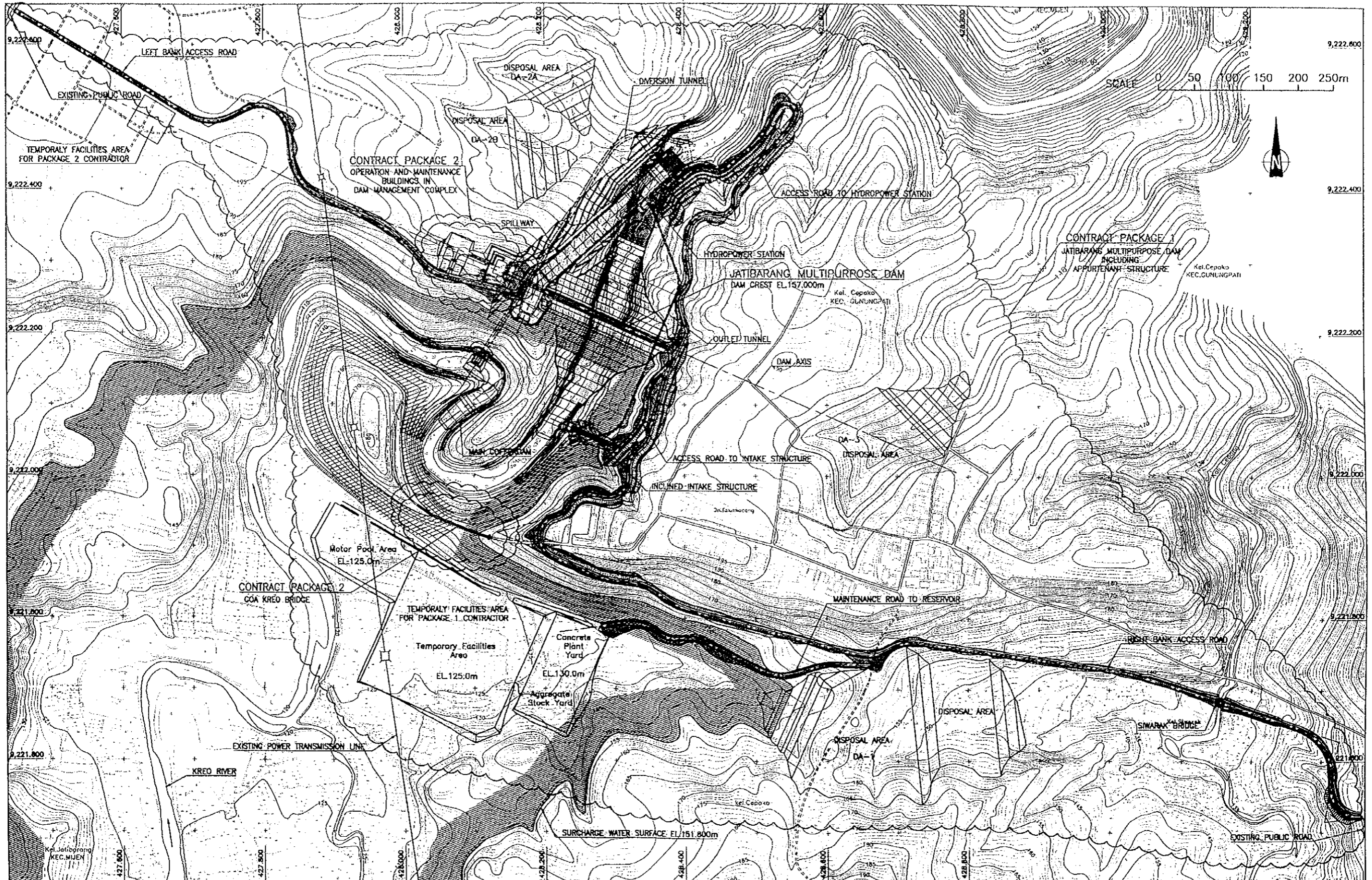
**PROJECT IMPLEMENTATION**

**LIST OF FIGURES**

**Chapter 13**

Fig. 13.1.1	Project Packaging .....	F-13-1
Fig. 13.1.2	Implementation Schedule of Construction of Jatibarang Multipurpose Dam.....	F-13-2





- NOTES**
1. THE MAJOR WORKS TO BE CARRIED OUT UNDER THE CONTRACT PACKAGE 1 SHALL CONSIST OF, BUT NOT BE LIMITED TO, THE CONSTRUCTION OF JATIBARANG MULTIPURPOSE DAM INCLUDING THE APPURTENANT STRUCTURES SUCH AS SPILLWAY, OUTLET FACILITIES, DIVERSION FACILITIES, HYDROPOWER STATION, ACCESS ROADS AND RELOCATION OF EXISTING POWER TRANSMISSION LINE.
  2. THE MAJOR WORKS TO BE CARRIED OUT UNDER THE CONTRACT PACKAGE 2 SHALL CONSIST OF, BUT NOT BE LIMITED TO, THE CONSTRUCTION OF THE BUILDINGS AND EXTERNAL WORKS IN THE DAM MANAGEMENT COMPLEX, AND THE APPROACH BRIDGE TO GOA KREO CAVE.
  3. THE EXCAVATION WORKS OF THE DAM MANAGEMENT COMPLEX AREA SHALL BE CARRIED OUT BY THE PACKAGE 1 CONTRACTOR.

THE DETAILED DESIGN OF FLOOD CONTROL, URBAN DRAINAGE AND WATER RESOURCES DEVELOPMENT IN SEMARANG IN THE REPUBLIC OF INDONESIA

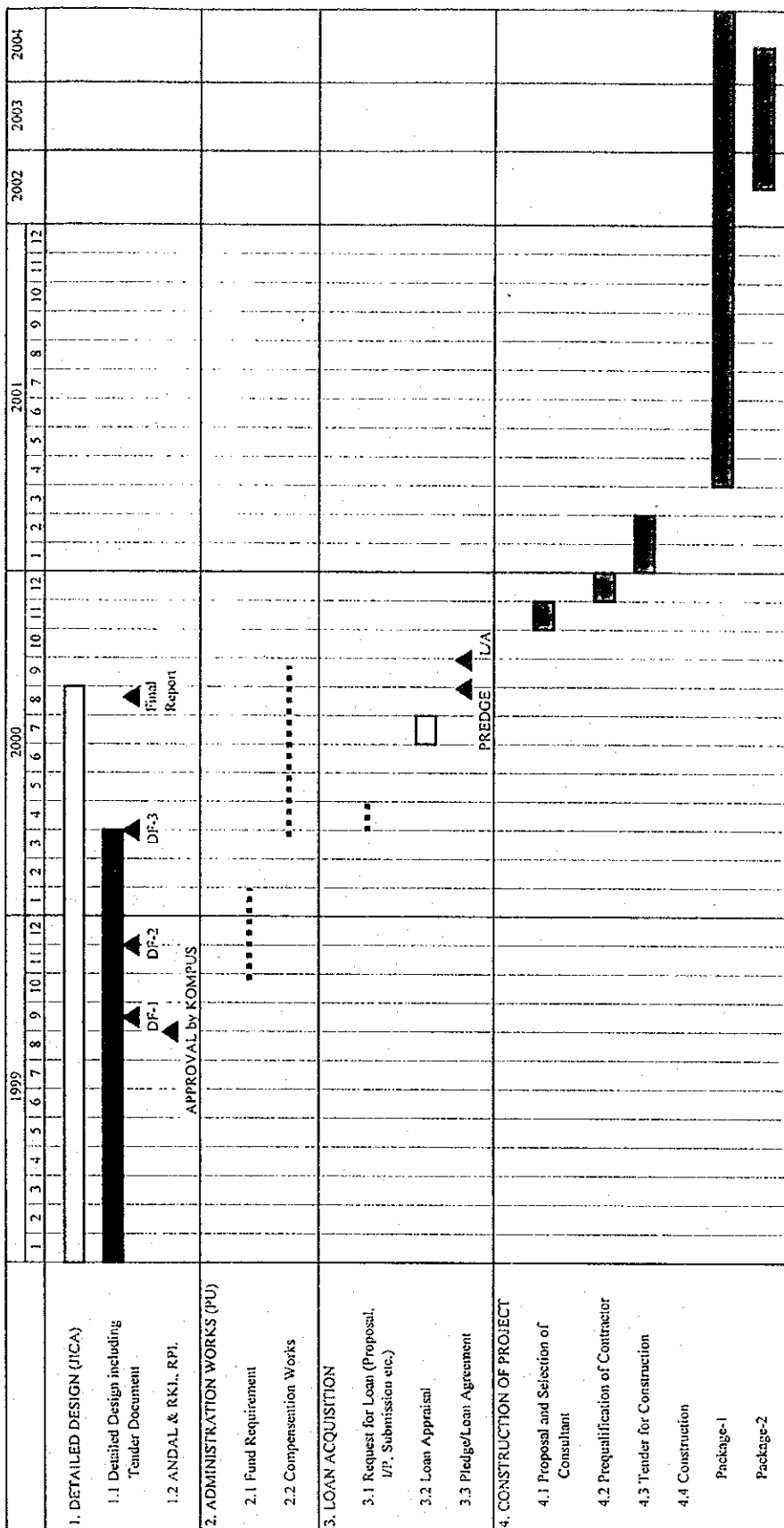
JAPAN INTERNATIONAL COOPERATION AGENCY

Fig. 13.1.1

PROJECT PACKAGING



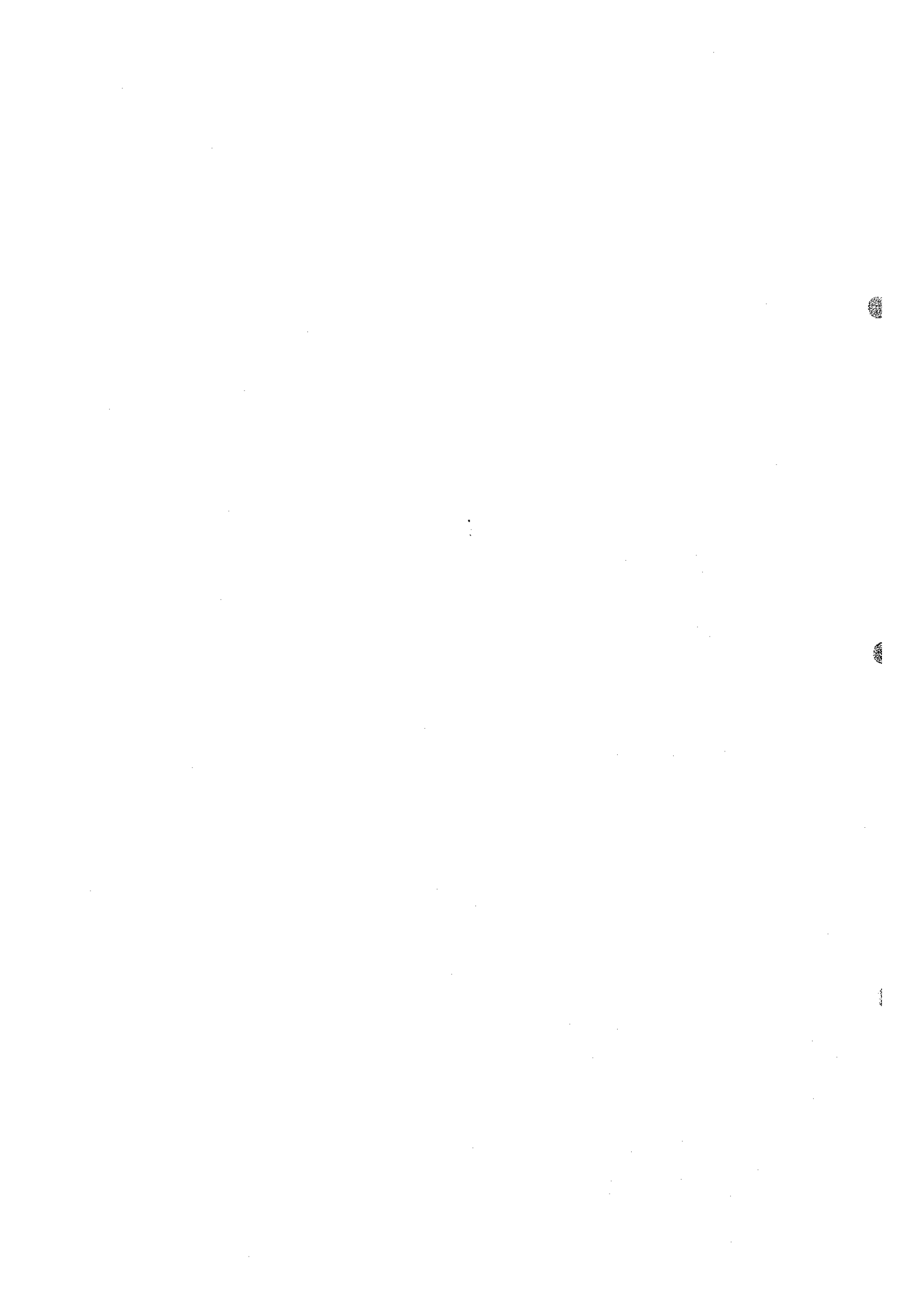




Legend : DF-1 : Draft final report for West Floodway/Garang River Improvement.  
 DF-2 : Draft final report for Urban Drainage System Improvement.  
 DF-3 : Draft final report for Construction of Jatibarang Multipurpose Dam.  
 L/A : Loan Agreement.

THE DETAILED DESIGN OF FLOOD CONTROL, URBAN DRAINAGE AND WATER RESOURCES DEVELOPMENT IN SEMARANG IN THE REPUBLIC OF INDONESIA  
 JAPAN INTERNATIONAL COOPERATION AGENCY

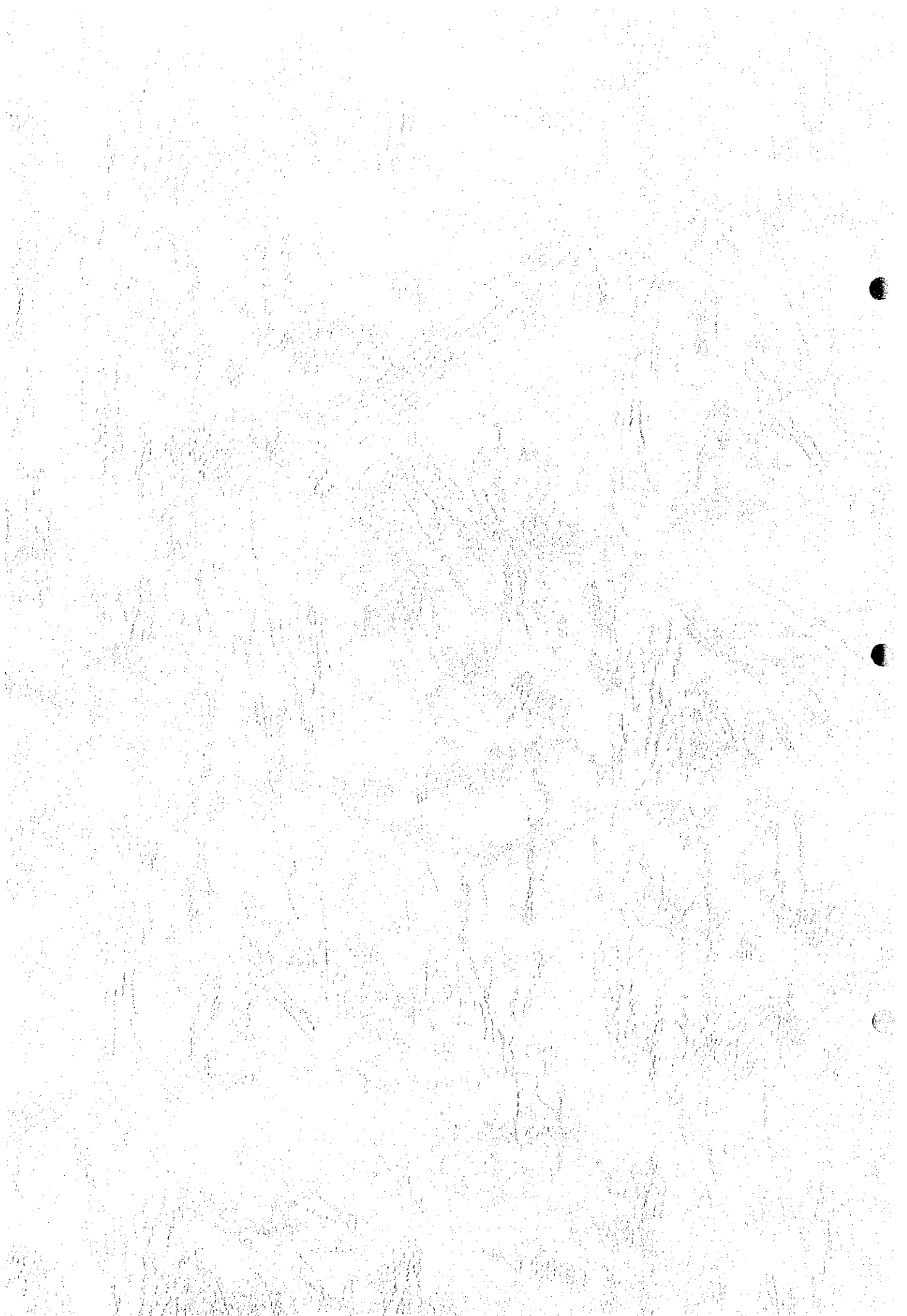
Fig. 13.1.2 IMPLEMENTATION SCHEDULE OF CONSTRUCTION OF JATIBARANG MULTIPURPOSE DAM



1

2

3





JICA