

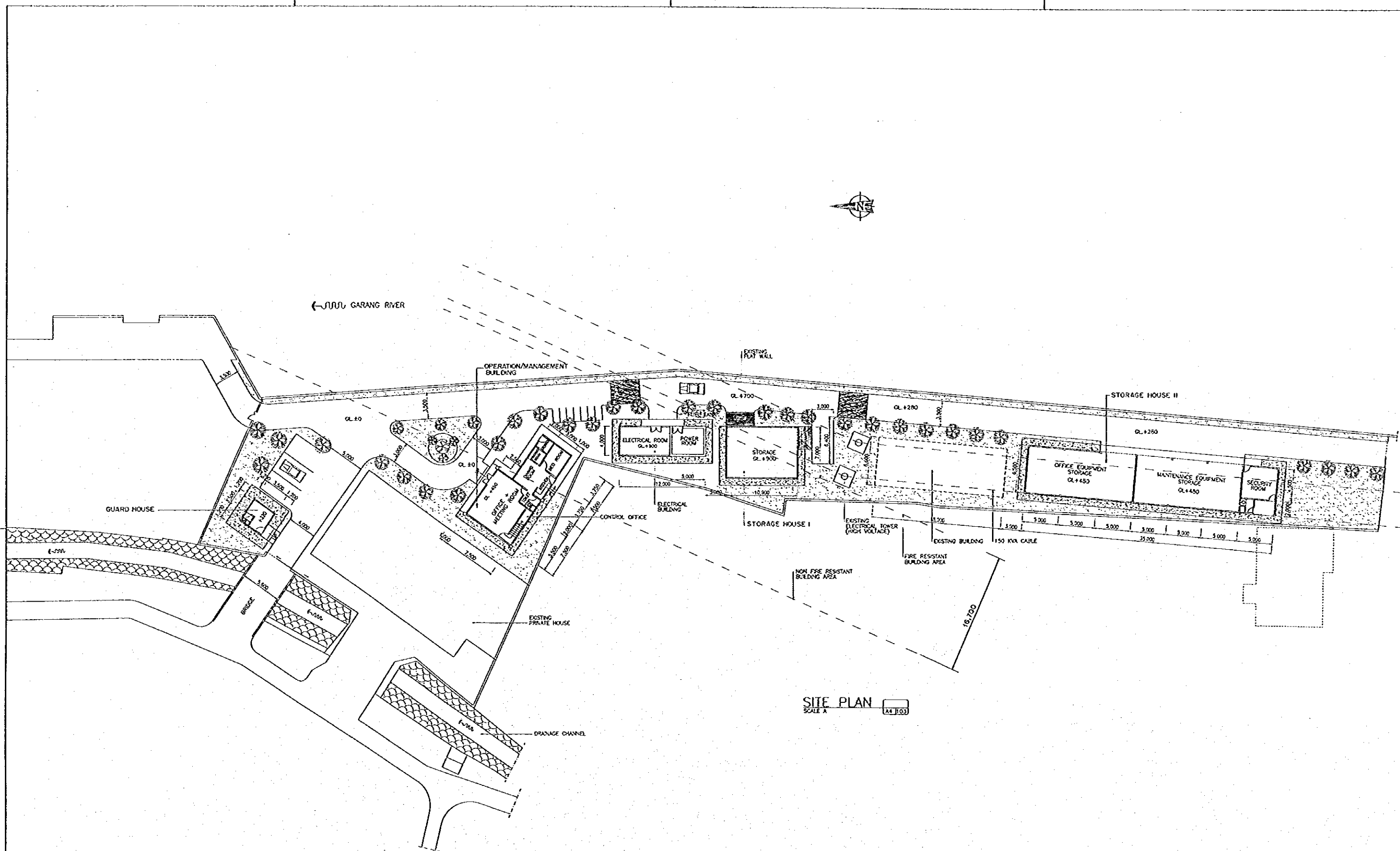
FLOOR AREA TABLE

OPERATION/MANAGEMENT BUILDING				STORAGE HOUSE I				GUARD HOUSE				GATE CONTROL HOUSE I (2,3)				INTAKE GATE SHED ON RIGHT BANK													
CODE		FLOOR AREA		CODE		FLOOR AREA		CODE		FLOOR AREA		CODE		FLOOR AREA		CODE		FLOOR AREA											
1	O	OFFICE ROOM	7,500x7,500	56.250 M2	1	S	STORAGE 7,000x10,000	70.000 M2	1	Sc	SECURITY ROOM (3,500x3,500)	12.250 M2	1	C	CONTROL ROOM 6,450x4,450	41.603 M2	1	IG	INTAKE GATE SHED ON RIGHT BANK 3,000x13,050	49.150 M2									
2	T	TOILET			2	Te	TERRACE $\frac{((1,500x3,500) + (1,500x3,500))}{3} =$	3.400 M2	2	T	TOILET																		
3	St	STAR ROOM							3	Te	TERRACE $\frac{(1,800x1,500)}{3} =$	0.900 M2																	
4	CO	CONTROL ROOM	7,500x7,500	56.250 M2																									
5	D/K	DINING ROOM / KITCHEN	3,750x5,000	18.750 M2																									
6	B	BED ROOM																											
7	Ms	MUSHOLA	3,750x5,000	18.750 M2																									
8	S	STORAGE																											
9	Te	TERRACE	$\frac{((1,000x7,500) + (2,000x3,500) + (1,000x28,700))}{3} =$	10.500 M2																									
TOTAL				160.500 M2		TOTAL				73.400 M2		TOTAL				13.150 M2		TOTAL 2 UNIT				83.206 M2		TOTAL				49.150 M2	
ELECTRICAL BUILDING				STORAGE HOUSE II				GATE CONTROL HOUSE II (1,4)				INTAKE GATE SHED ON LEFT BANK																	
CODE		FLOOR AREA		CODE		FLOOR AREA		CODE		FLOOR AREA		CODE		FLOOR AREA		CODE		FLOOR AREA											
1	E	ELECTRICAL ROOM	7,000x4,000	28.000 M2	1	ME	MAINTENANCE EQUIPMENT STORAGE 15,000x5,500	97.500 M2	1	C	CONTROL ROOM 12,800x6,450	82.560 M2	1	IG	INTAKE GATE SHED ON LEFT BANK 3,000x5,350	19.050 M2													
2	Pw	POWER ROOM	5,000x4,000	20.000 M2	2	OE	OFFICE EQUIPMENT STORAGE 15,000x6,500	97.500 M2																					
3	Te	TERRACE	$\frac{(1,500x5,000)}{3} =$	3.000 M2	3	Sc	SECURITY ROOM 4,500x5,000	22.500 M2																					
					4	T	TOILET 2,000x2,000	4.000 M2																					
					5	Te	TERRACE $\frac{((12,500x1,500) + (3,000x2,000))}{3} =$	13.250 M2																					
TOTAL				51.000 M2		TOTAL				234.750 M2		TOTAL 2 UNIT				165.120 M2		TOTAL				19.050 M2							
TOTAL				532.800 M2		TOTAL				234.750 M2		TOTAL				316.526 M2		TOTAL				316.526 M2							

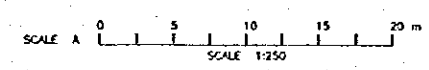
GRAND TOTAL 849.326 M2

NO.	DATE	REVISIONS	ORIGINATED	DESIGNED	APPROVED

THE REPUBLIC OF INDONESIA MINISTRY OF PUBLIC WORKS DIRECTORATE GENERAL OF WATER RESOURCES DEVELOPMENT AND DIRECTORATE GENERAL OF HUMAN SETTLEMENT		PROVINCE CENTRAL JAVA
JAWA TENGAH FLOOD CONTROL PROJECT COMPONENT 1 WEST FLOODWAY / GARANG RIVER IMPROVEMENT SIMONGAN WEIR MANAGEMENT COMPLEX OPERATION/MANAGEMENT BUILDING FLOOR AREA TABLE		PROJECT NAME FLOOD CONTROL URBAN MANAGE AND WATER RESOURCES DEVELOPMENT IN SEMARANG IN THE REPUBLIC OF INDONESIA
JAPAN INTERNATIONAL COOPERATION AGENCY CITY ENGINEERING COLLEGE IN AMBOYONG PACIFIC CONSULTANTS INTERNATIONAL AND PAKO INTERNATIONAL PTE.		DISTRICT SEMARANG CITY
DESIGNED: <i>[Signature]</i> CHECKED: <i>[Signature]</i>		DRAWING NO. AC-101 JG-P2-SH-B-4 SHEET NO. 111
APPROVED: <i>[Signature]</i> CHIEF OF PLANNING AND DESIGN PROJECT MANAGER		DATE: <i>[Date]</i> CONTRACT NO.

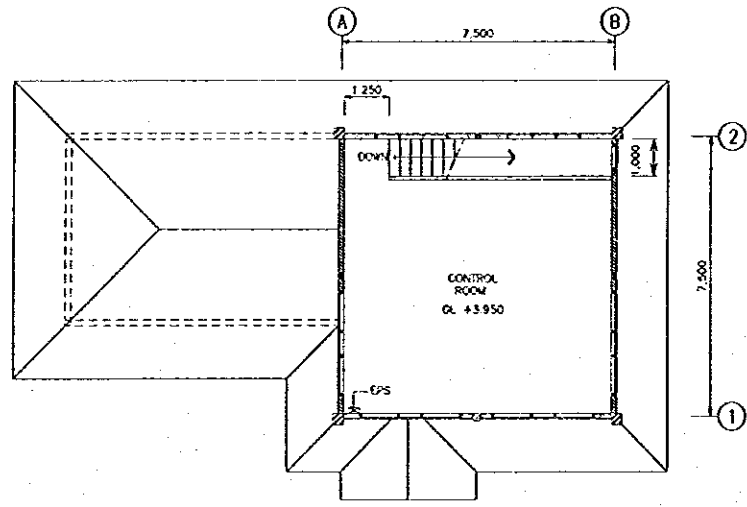


SITE PLAN
SCALE A

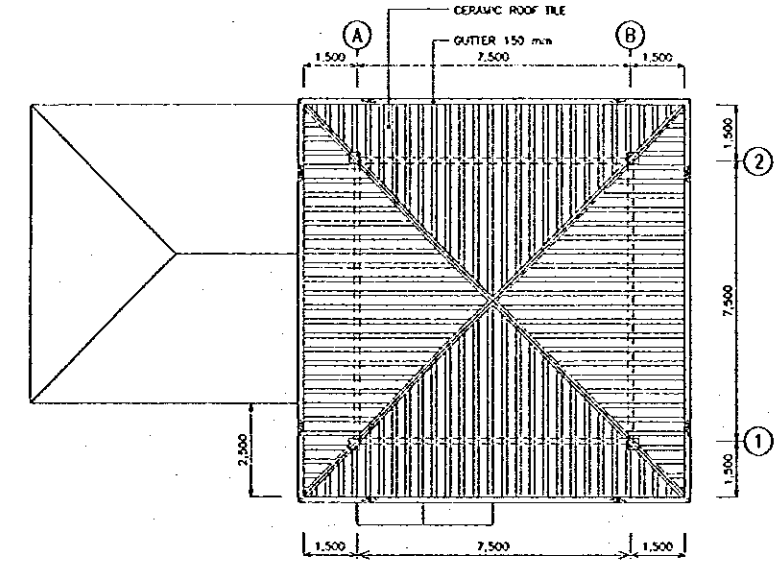


NO.	DATE	REVISIONS	ORIGINATED	DESIGNED	APPROVED

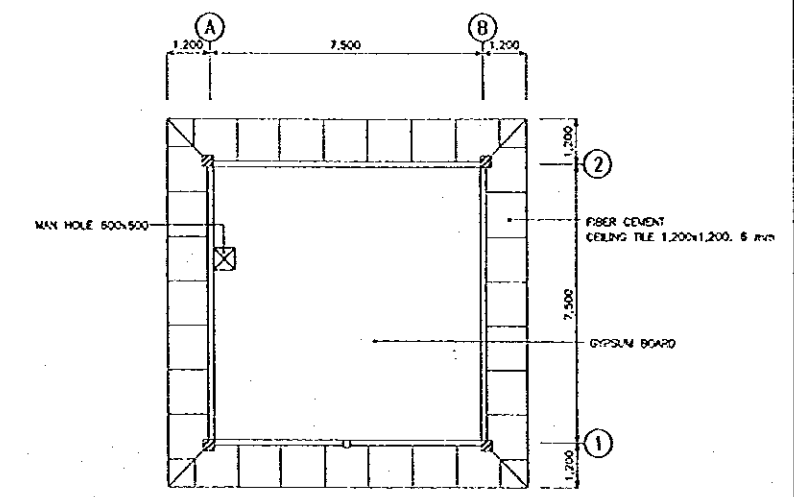
	THE REPUBLIC OF INDONESIA MINISTRY OF PUBLIC WORKS DIRECTORATE GENERAL OF WATER RESOURCES DEVELOPMENT AND DIRECTORATE GENERAL OF HUMAN SETTLEMENT		PROVINCE CENTRAL JAVA
	JATUNSELUNA FLOOD CONTROL PROJECT COMPONENT - WEST FLOODWAY/GARANG RIVER IMPROVEMENT SIMONGAN WEIR MANAGEMENT BUILDING OPERATION/MANAGEMENT BUILDING SITE PLAN (PORT PLAN)		PROJECT NAME FLOOD CONTROL, URBAN DRAINAGE AND WATER RESOURCES DEVELOPMENT IN SEMARANG IN THE REPUBLIC OF INDONESIA
JAWA INTERNATIONAL COOPERATION AGENCY PT. JAWA INTERNATIONAL COOPERATION AGENCY PACIFIC CONSULTANTS INTERNATIONAL AND JAWA INTERNATIONAL INC.		DESIGNED CHECKED	DISTRICT SEMARANG CITY DRA/243 NO. 04-103/2012/SK-B-5
CHIEF OF PLANNING AND DESIGN PROJECT MANAGER		DATE	SHEET NO. 112 CONTRACT NO.



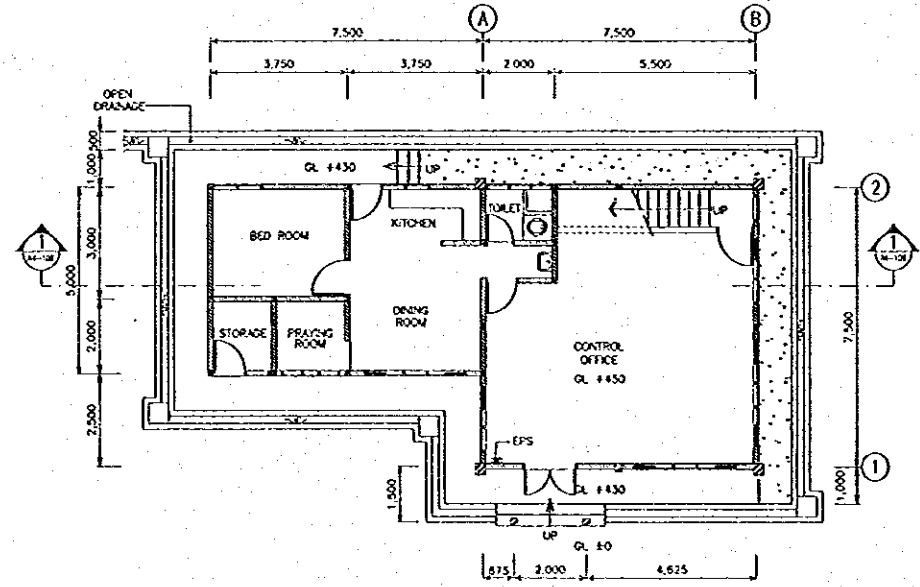
2nd FLOOR PLAN
SCALE A



ROOF PLAN
SCALE A

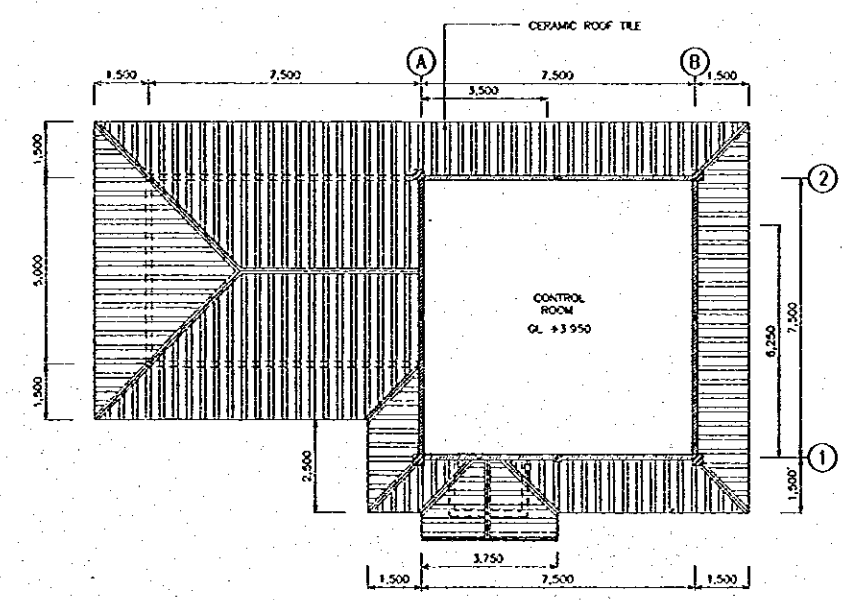


REFLECTED CEILING PLAN
SCALE A

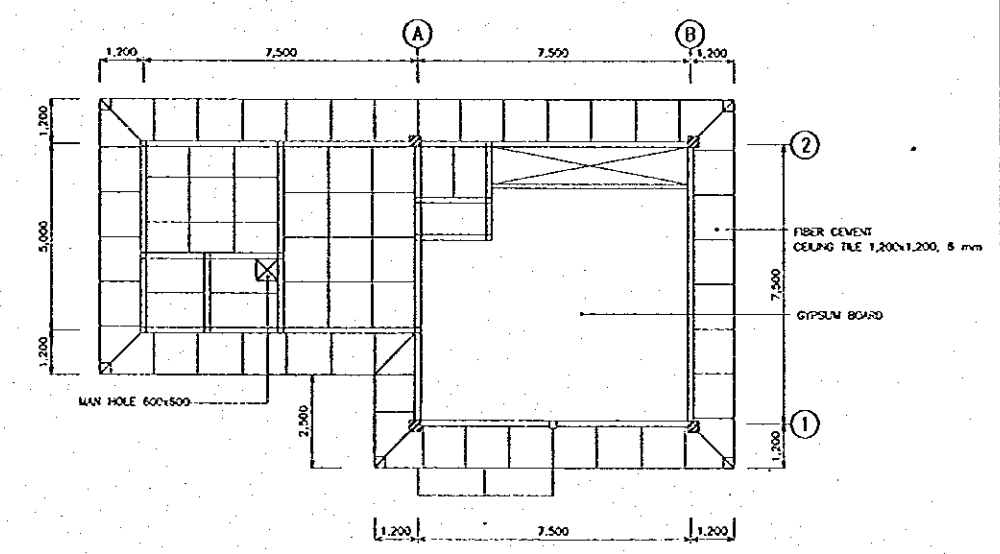


NOTE : EPS (Electrical Piping Space)

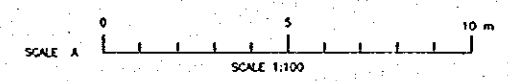
1st FLOOR PLAN
SCALE A



ROOF PLAN
SCALE A

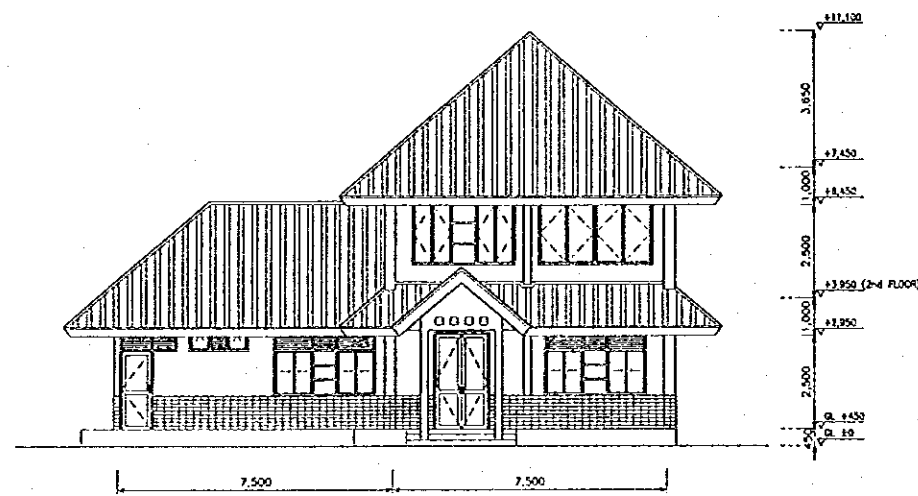


REFLECTED CEILING PLAN
SCALE A

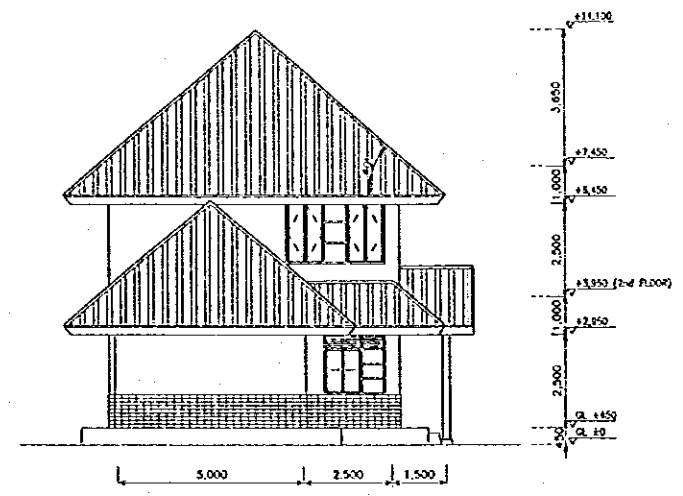


NO	DATE	REVISIONS	ORIGINATED	DESIGNED	APPROVED

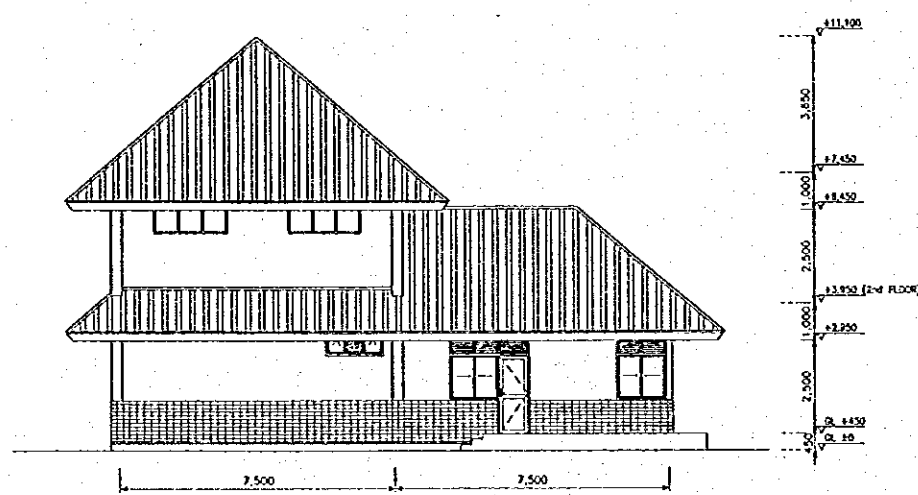
<p>THE REPUBLIC OF INDONESIA MINISTRY OF PUBLIC WORKS DIRECTORATE GENERAL OF WATER RESOURCES DEVELOPMENT AND DIRECTORATE GENERAL OF HUMAN SETTLEMENT</p>	PROVINCE	CENTRAL JAWA
	PROJECT NAME	FLOOD CONTROL, URBAN DRAINAGE AND WATER RESOURCES DEVELOPMENT IN SEMARANG IN THE REPUBLIC OF INDONESIA
	DISTRICT	SEMARANG CITY
	DRAWING NO./A-E-104/MS-P2-SM-B-6	SHEET NO. 113
<p>JRATUNSELUNA FLOOD CONTROL PROJECT COMPONENT : WEST FLOODWAY / GARANG RIVER IMPROVEMENT SIMONGAN WEIR MANAGEMENT COMPLEX OPERATION/MANAGEMENT BUILDING FLOOR PLAN, ROOF PLAN & CEILING PLAN</p> <p>JAFIR INTERNATIONAL CONSULTING AGENCY CI SURABAYA 60170 - 25 ARABURU WIS PACIFIC GENERAL TRADE INTERNATIONAL, INC. PABO SURABAYA 60170, IND.</p>	DESIGNED	<i>[Signature]</i>
	CHECKED	<i>[Signature]</i>
	DATE	
	CONTRACT NO.	
APPROVED	CHIEF OF PLANNING AND DESIGN	
	PROJECT MANAGER	



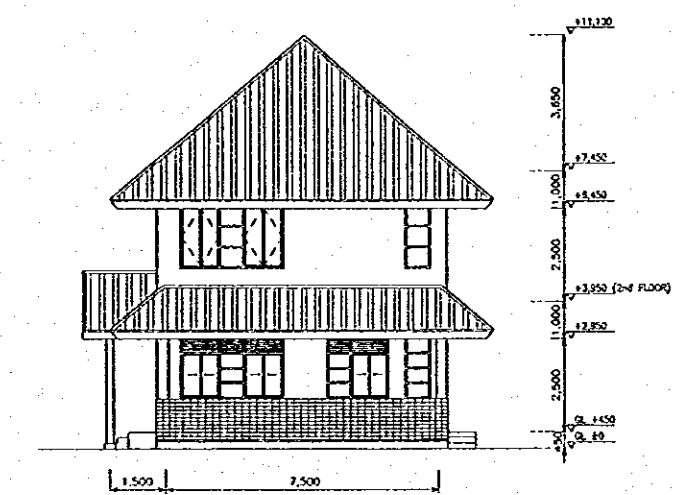
NORTH ELEVATION
SCALE A



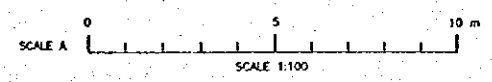
EAST ELEVATION
SCALE A



SOUTH ELEVATION
SCALE A

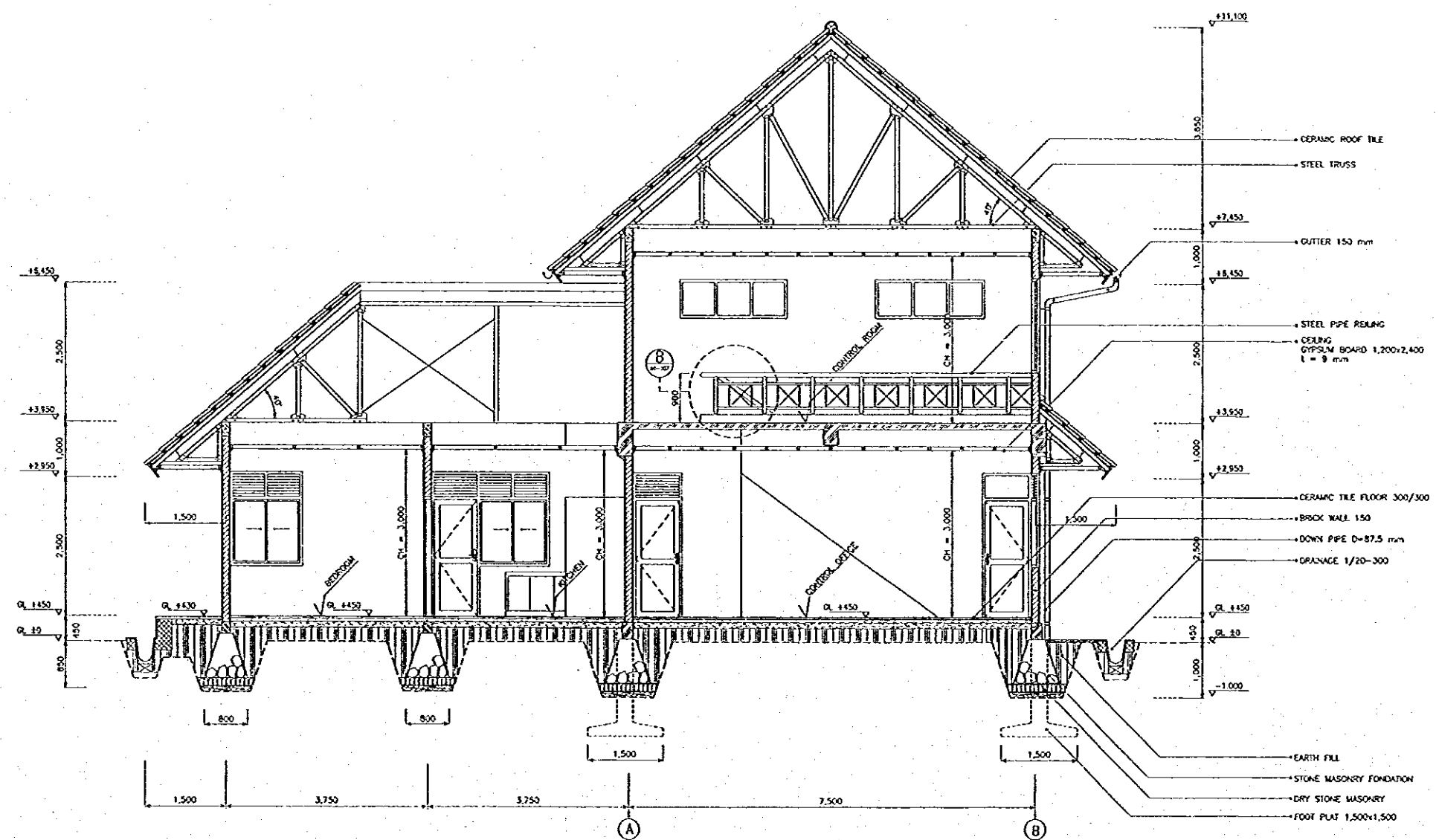


WEST ELEVATION
SCALE A



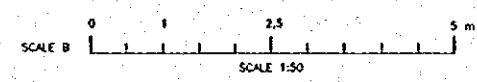
NO.	DATE	REVISIONS	ORIGINATED	DESIGNED	APPROVED

THE REPUBLIC OF INDONESIA MINISTRY OF PUBLIC WORKS DIRECTORATE GENERAL OF WATER RESOURCES DEVELOPMENT AND DIRECTORATE GENERAL OF HUMAN SETTLEMENT		PROVINCE CENTRAL JAVA
IRATUNSELUNA FLOOD CONTROL PROJECT COMPONENT : WEST FLOODWAY / GARANO RIVER IMPROVEMENT SIMONGAN WEIR MANAGEMENT COMPLEX OPERATION/MANAGEMENT BUILDING ELEVATION		PROJECT NAME FLOOD CONTROL, URBAN DRAINAGE AND WATER RESOURCES DEVELOPMENT IN SEMARANG IN THE REPUBLIC OF INDONESIA
EMAN INTERNATIONAL COOPERATION AGENCY CH ENGINEERING CO., LTD. & ASSOCIATES PTE PACIFIC CONSULTANTS INTERNATIONAL AND PACIFIC INTERNATIONAL PTE.		DISTRICT SEMARANG CITY
DESIGNED: [Signature] CHECKED: [Signature]		DRAWING NO. M-105/SN-P2-SM-B1-7 SHEET NO. 174
CHIEF OF PLANNING AND DESIGN PROJECT MANAGER		DATE CONTRACT NO.



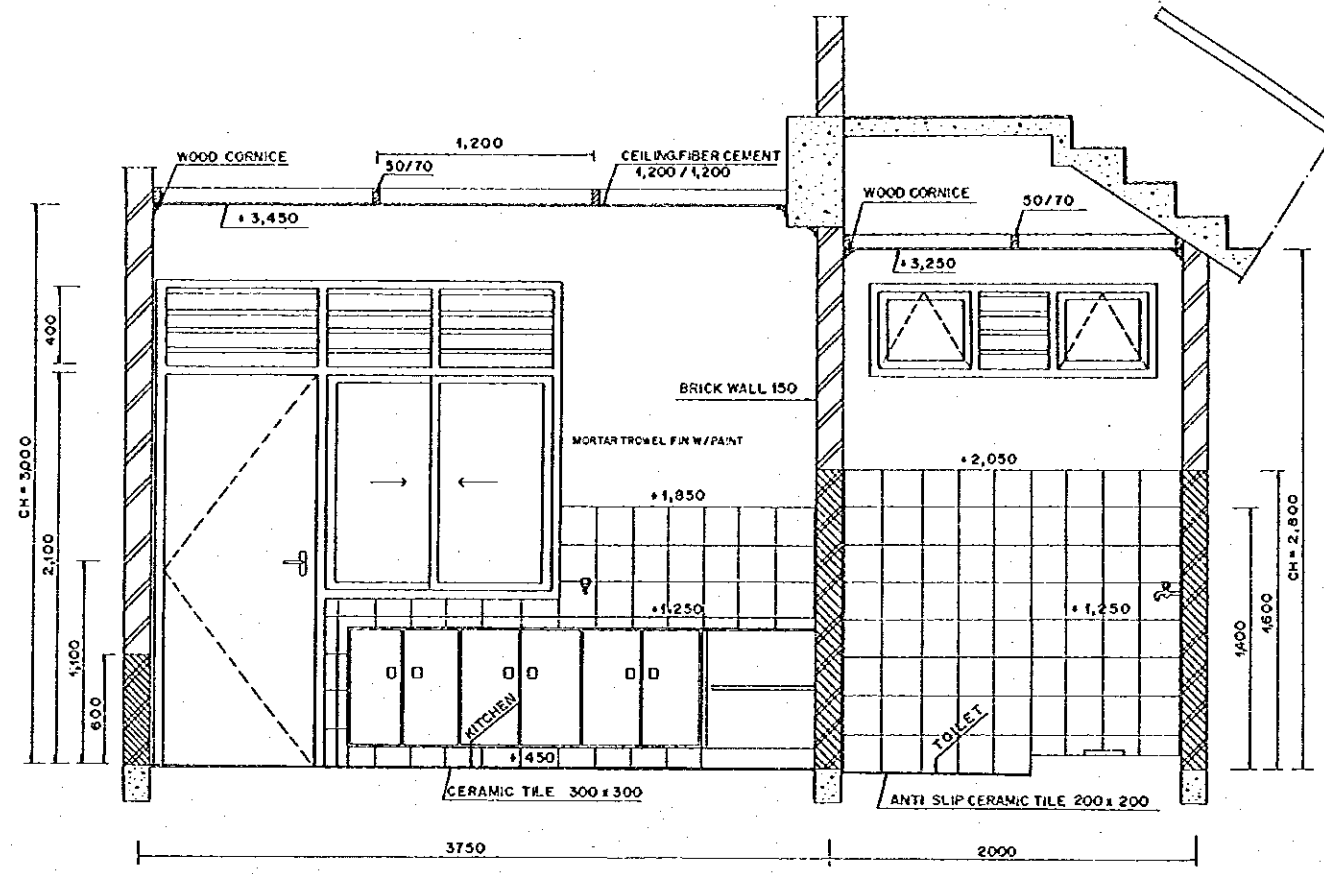
- +11.100
- 3.650
- CERAMIC ROOF TILE
- STEEL TRUSS
- +7.850
- 1.000
- OUTER 150 mm
- +8.450
- 2.500
- STEEL PIPE RAILING
- CEILING GYPSUM BOARD 1,200x2,400 t = 9 mm
- +3.550
- 1.000
- +2.950
- CERAMIC TILE FLOOR 300/300
- BRICK WALL 150
- DOWN PIPE D=87.5 mm
- DRAINAGE 1/20-300
- +1.150
- 1.500
- +1.000
- EARTH FILL
- STONE MASONRY FOUNDATION
- DRY STONE MASONRY
- FOOT PLAT 1,500x1,500
- 1.000

SECTION 1
SCALE B

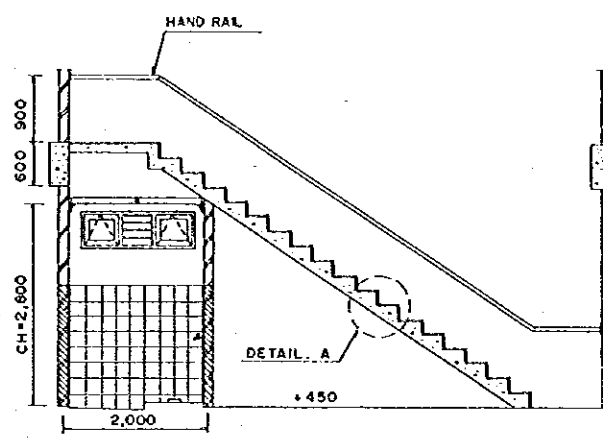


NO.	DATE	REVISIONS	ORIGINATED	DESIGNED	APPROVED

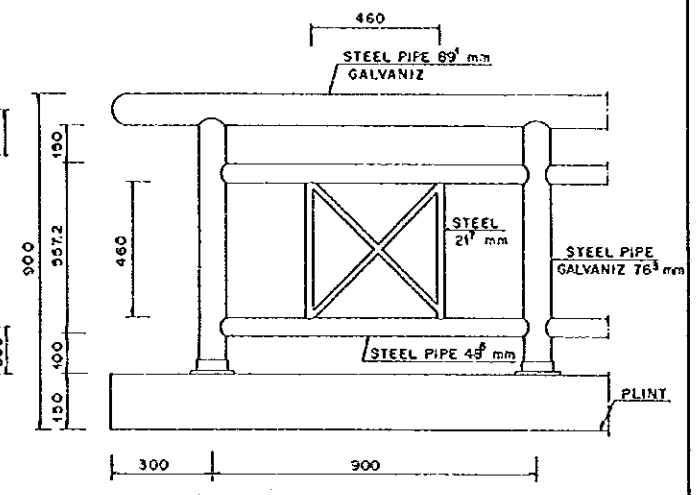
THE REPUBLIC OF INDONESIA MINISTRY OF PUBLIC WORKS DIRECTORATE GENERAL OF WATER RESOURCES DEVELOPMENT AND DIRECTORATE GENERAL OF HUMAN SETTLEMENT		PROVINCE CENTRAL JAVA
JATUNUSSELUNA FLOOD CONTROL PROJECT COMPONENT : WEST FLOODWAY / GARANG RIVER IMPROVEMENT SIMONGAN WEIR MANAGEMENT COMPLEX OPERATION/MANAGEMENT BUILDING SECTION		PROJECT NAME FLOOD CONTROL, DRAINAGE AND WATER RESOURCES DEVELOPMENT IN SEMARANG IN THE REPUBLIC OF INDONESIA
JAPAN INTERNATIONAL COOPERATION AGENCY CITY ENGINEERING CO., LTD. IN ASSOCIATION WITH PACIFIC CONSULTANTS INTERNATIONAL, INC. AND PAKO INTERNATIONAL, INC.		DISTRICT SEMARANG CITY
DESIGNED CHECKED	DATE	CONTRACT NO.
CRUISE OF PLANNING AND DESIGN PROJECT MANAGER		



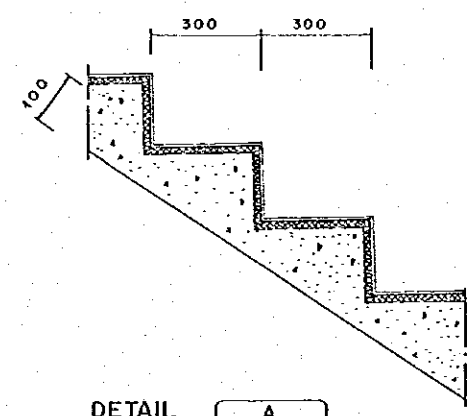
INTERIOR ELEVATION
SCALE . B



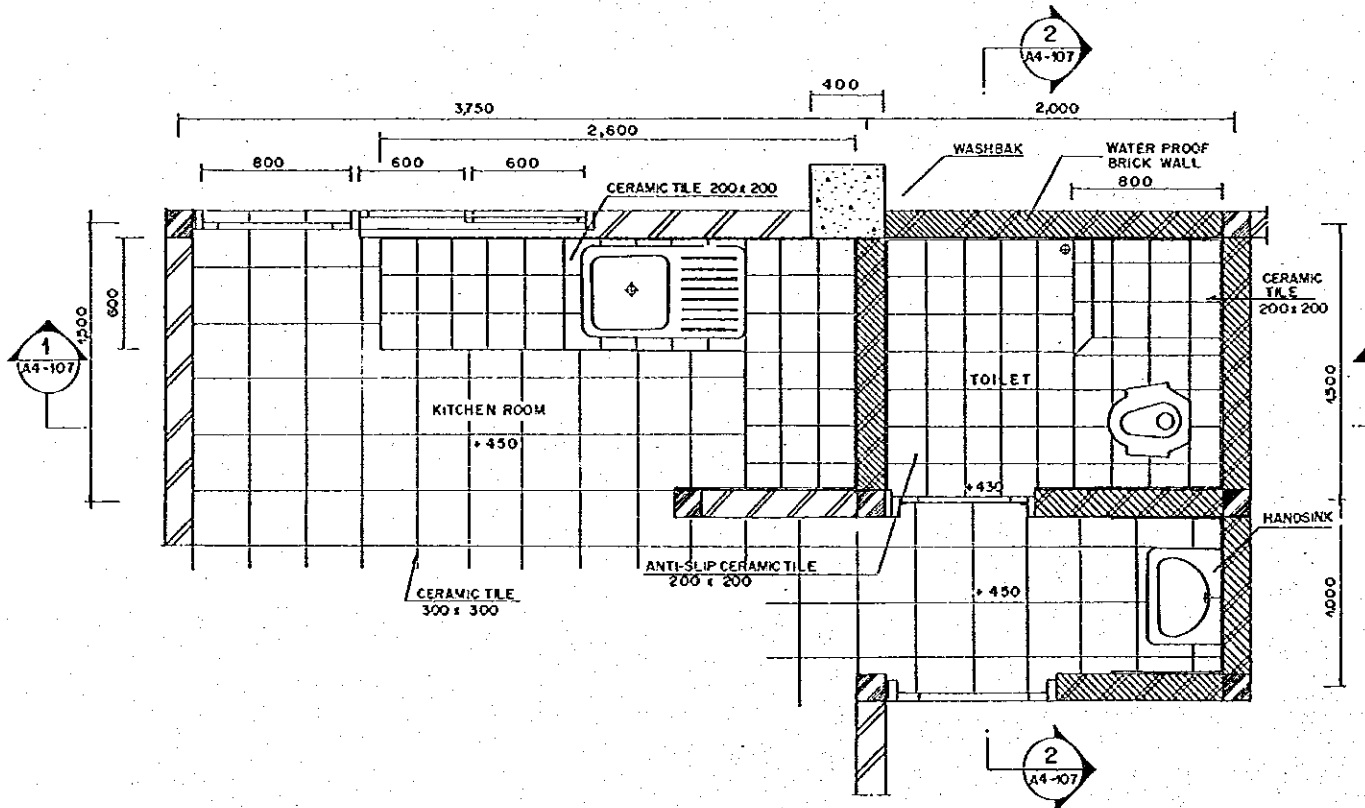
INTERIOR ELEVATION
STAIR ROOM
SCALE . A



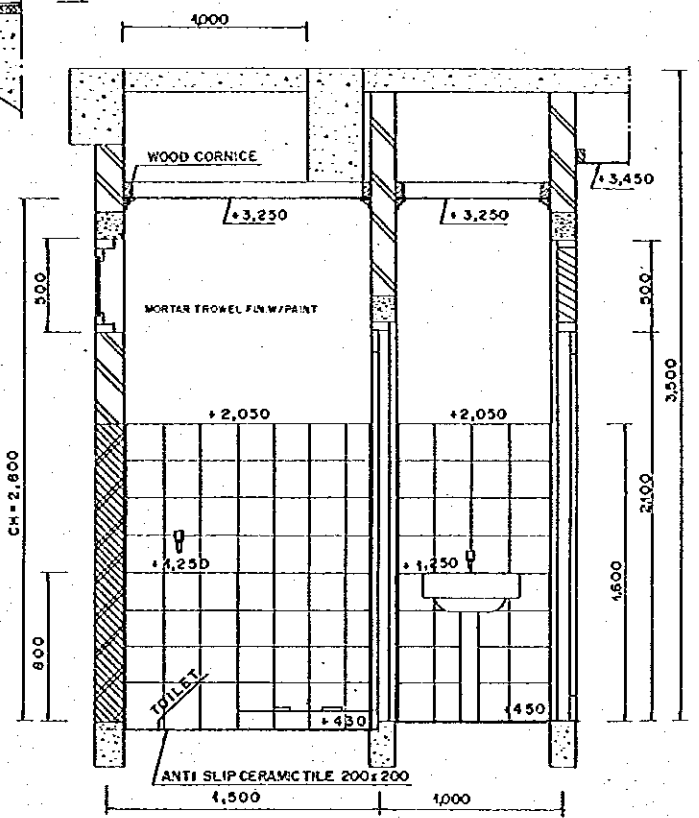
DETAIL
SCALE . C



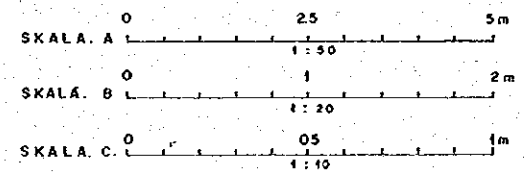
DETAIL
SCALE . C



DETAIL PLAN
LAVATORY & KITCHEN
SCALE . B

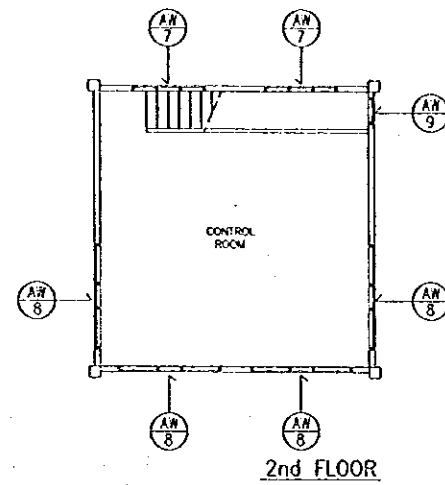
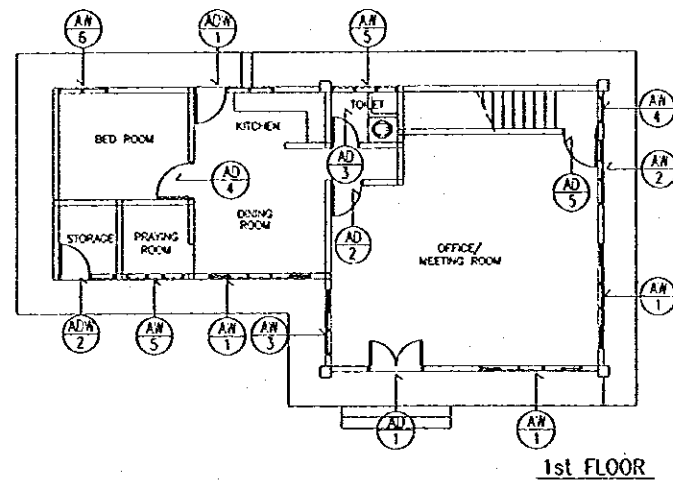


INTERIOR ELEVATION
SCALE . B



THE REPUBLIC OF INDONESIA MINISTRY OF PUBLIC WORKS DIRECTORATE GENERAL OF WATER RESOURCES DEVELOPMENT AND DIRECTORATE GENERAL OF HUMAN SETTLEMENT		PROVINCE CENTRAL JAVA
IRATUNSELINA FLOOD CONTROL PROJECT COMPONENT : WEST FLOODWAY / GARANG RIVER IMPROVEMENT SIMONGAN WEIR MANAGEMENT COMPLEX OPERATION/MANAGEMENT BUILDING INTERIOR ELEVATION, DETAIL PLAN & DETAIL		PROJECT NAME FLOOD CONTROL, URBAN DRAINAGE AND WATER RESOURCES DEVELOPMENT IN SEMARANG IN THE REPUBLIC OF INDONESIA
DESIGNED CHECKED APPROVED PROJECT MANAGER		DISTRICT SEMARANG CITY
DRAWING NO. A4 - 107/92-P2-SM-B-9 SHEET NO. 176		DATE CONTRACT NO.

NO.	DATE	REVISIONS	ORIGINATED	DESIGNED	APPROVED



KEY PLAN
SCALE A

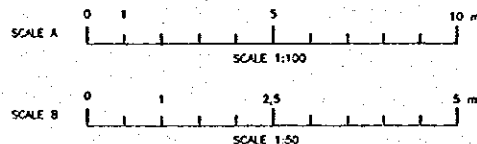
MARK	QTY	AD 1	1	AD 2	1	AD 3	1	AD 4	1
SHAPE									
TYPE		DOUBLE SWING		SINGLE SWING		SINGLE SWING		SINGLE SWING	
MATERIAL	FINISH	FRAME	ALU	ANODIZED	ALU	ANODIZED	ALU	ANODIZED	ALU
		PANEL	GLASS	-	GLASS	-	PLYWOOD 6 MM THICK	-	PLYWOOD 6 MM THICK
GLASS		CLEAR 5 MM THICK		CLEAR 5 MM THICK		CLEAR 5 MM THICK		CLEAR 5 MM THICK	
HARDWARE		METAL FITTINGS COMPLETE SET		METAL FITTINGS COMPLETE SET		METAL FITTINGS COMPLETE SET		METAL FITTINGS COMPLETE SET	
POSITION		OFFICE ROOM		OFFICE ROOM		TOILET		BED ROOM	

MARK	QTY	AD 5	1	AD 1	1	AD 2	1	AD 1	3
SHAPE									
TYPE		SINGLE SWING		SINGLE SWING & DOUBLE SLIDING		SINGLE SWING		DOUBLE SLIDING & FIX	
MATERIAL	FINISH	FRAME	ALU	ANODIZED	ALU	ANODIZED	ALU	ANODIZED	ALU
		PANEL	GLASS	-	PLYWOOD 6 MM THICK & GLASS	PRG	PLYWOOD 6 MM THICK	PRG	GLASS
GLASS		CLEAR 5 MM THICK		CLEAR 5 MM THICK		CLEAR 5 MM THICK		CLEAR 5 MM THICK	
HARDWARE		METAL FITTINGS COMPLETE SET		METAL FITTINGS COMPLETE SET		METAL FITTINGS COMPLETE SET		METAL FITTINGS COMPLETE SET	
POSITION		OFFICE ROOM		KITCHEN ROOM		STORAGE		OFFICE ROOM, DINING ROOM	

DOOR & WINDOW SCHEDULE
SCALE B

LEGEND :
 AD : ALUMINUM DOOR
 AW : ALUMINUM WINDOW
 AL : ALUMINUM LOUVER
 ADW : ALUMINUM DOOR WINDOW
 DOORS & WINDOWS SYMBOL
 REFERENCE NO.

MATERIAL :
 ALU : ALUMINUM
 ANO : ANODIZED
 PRG : POLYUR , CLEAR SEMI-GLOSS



NO.	DATE	REVISIONS	ORGANIZED	DESIGNED	APPROVED

THIS REPUBLIC OF INDONESIA
 MINISTRY OF PUBLIC WORKS
 DIRECTORATE GENERAL OF WATER RESOURCES DEVELOPMENT AND DIRECTORATE GENERAL OF HUMAN SETTLEMENT

JRATUNSELUNA FLOOD CONTROL PROJECT
 COMPONENT : WEST BLOODWAY / GARANG RIVER IMPROVEMENT
**SIMONGAN WEIR MANAGEMENT COMPLEX
 OPERATION / MANAGEMENT BUILDING
 KEY PLAN, DOOR WINDOW SCHEDULE**

JAPAN INTERNATIONAL COOPERATION AGENCY
 CHUO KAWASUMI CO. LTD. IN ASSOCIATION WITH
 PACIFIC CONSULTANTS INTERNATIONAL AND
 PANGLOSS INTERNATIONAL INC.

DESIGNED: [Signature]
 CHECKED: [Signature]
 CRISP OF PLANNING AND DESIGN
 PROJECT MANAGER

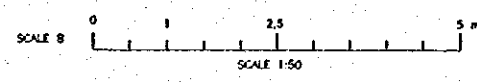
PROVINCE: CENTRAL JAWA
 PROJECT NAME: FLOOD CONTROL, URBAN DRAINAGE AND WATER RESOURCES DEVELOPMENT IN SEMARANG IN THE REPUBLIC OF INDONESIA
 DISTRICT: SEMARANG CITY
 DRAWING NO. 44-100/RS-P2-SM-01/04
 SHEET NO. 117
 DATE: [Date]
 CONTRACT NO. [Number]

MARK	QTY	AM 2	1	AM 3	1	AM 4	1	AM 5	2
SHAPE									
TYPE		DOUBLE SLIDING & FIX		DOUBLE SLIDING & FIX		FIX		TOP HUNG	
MATERIAL	FINISH	FRAME	ALU	ANO	ALU	ANO	ALU	ANO	ALU
		PANEL	GLASS	-	GLASS	-	GLASS	-	GLASS
GLASS		CLEAR 5 MM THICK		CLEAR 5 MM THICK		CLEAR 5 MM THICK		CLEAR 5 MM THICK	
HARDWARE		METAL FITTINGS COMPLETE SET		METAL FITTINGS COMPLETE SET		METAL FITTINGS COMPLETE SET		METAL FITTINGS COMPLETE SET	
POSITION		OFFICE ROOM		OFFICE ROOM		STAIR ROOM		TOILET & PRAYING ROOM	
MARK	QTY	AM 6	1	AM 7	2	AM 8	4	AM 9	2
SHAPE									
TYPE		DOUBLE SLIDING		FIX		DOUBLE SWING & FIX		FIX	
MATERIAL	FINISH	FRAME	ALU	ANO	ALU	ANO	ALU	ANO	ALU
		PANEL	GLASS	-	GLASS	-	GLASS	-	GLASS
GLASS		CLEAR 5 MM THICK		CLEAR 5 MM THICK		CLEAR 5 MM THICK		CLEAR 5 MM THICK	
HARDWARE		METAL FITTINGS COMPLETE SET		METAL FITTINGS COMPLETE SET		METAL FITTINGS COMPLETE SET		METAL FITTINGS COMPLETE SET	
POSITION		BED ROOM		STAIR ROOM		CONTROL ROOM		STAIR ROOM	

DOOR & WINDOW SCHEDULE
SCALE 8

LEGEND :
 AD : ALUMINUM DOOR
 AW : ALUMINUM WINDOW
 AM : ALUMINUM MIRROR
 ADW : ALUMINUM DOOR WINDOW
 S : DOORS & WINDOWS SYMBOL
 REFERENCE NO.

MATERIAL :
 ALU : ALUMINUM
 ANO : ANODIZED
 PRG : POLYUR . CLEAR SENGLOSS



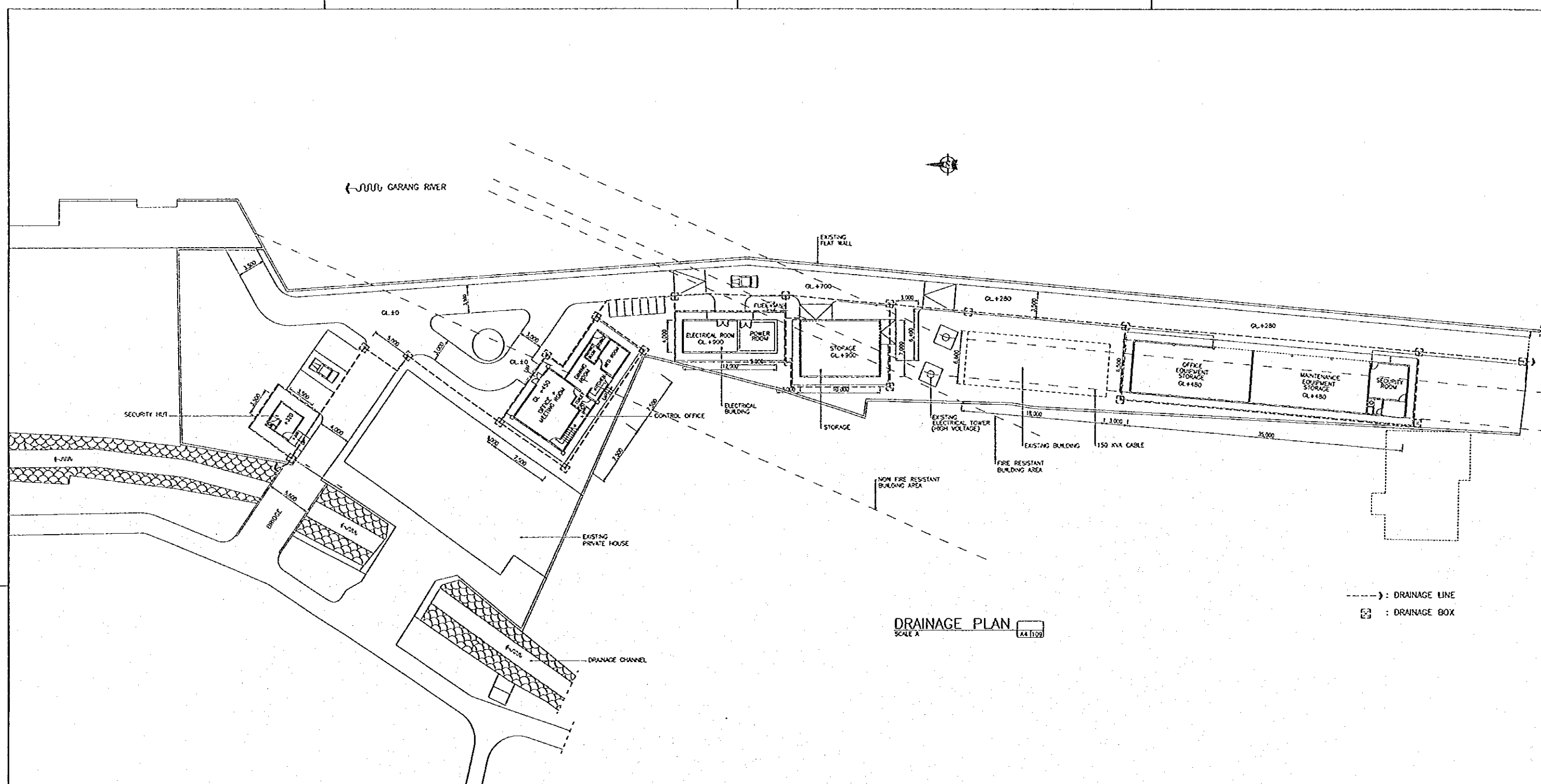
NO.	DATE	REVISIONS	ORIGINATED	DESIGNED	APPROVED

THE REPUBLIC OF INDONESIA
 MINISTRY OF PUBLIC WORKS
 DIRECTORATE GENERAL OF WATER RESOURCES DEVELOPMENT AND DIRECTORATE GENERAL OF HUMAN SETTLEMENT

PROVINCE: CENTRAL JAVA
 PROJECT NAME: FLOOD CONTROL URBAN DRAINAGE AND WATER RESOURCES DEVELOPMENT IN SEMARANG IN THE REPUBLIC OF INDONESIA
 DISTRICT: SEMARANG CITY
 DRAWING NO. AA-108/2014/P2-SM-BI/14
 SHEET NO. 17E

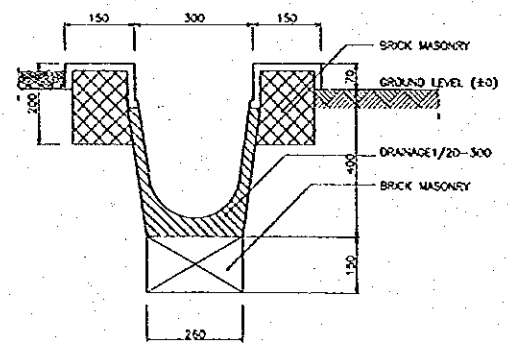
FRATUNSELUNA FLOOD CONTROL PROJECT
 COMPONENT: WEST FLOODWAY / GARANG RIVER IMPROVEMENT
 SIMONGAN WEIR MANAGEMENT COMPLEX
 OPERATION / MANAGEMENT BUILDING
 KEY PLAN, DOOR WINDOW SCHEDULE

DATE: / /
 PROJECT MANAGER:

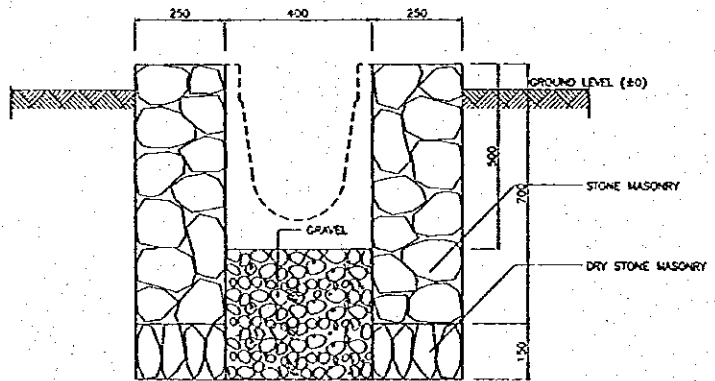


DRAINAGE PLAN
SCALE A

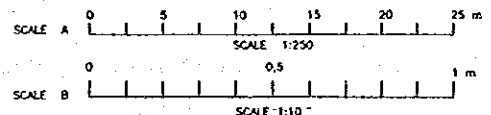
---> : DRAINAGE LINE
 □ : DRAINAGE BOX



TYPICAL DRAINAGE
SCALE B

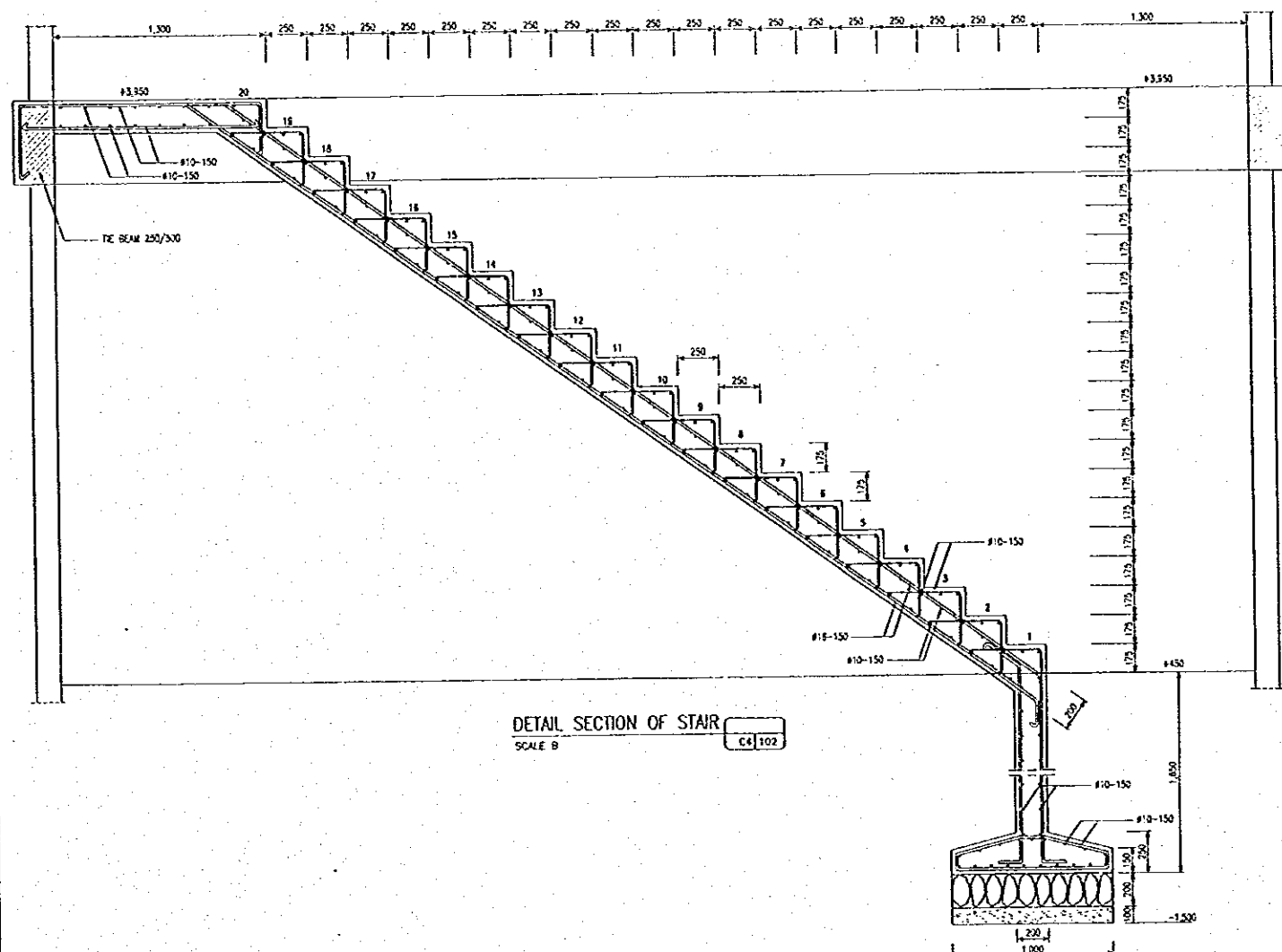
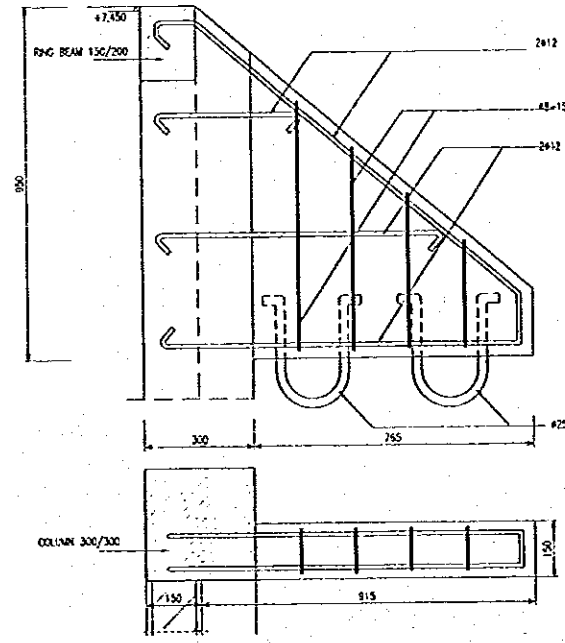
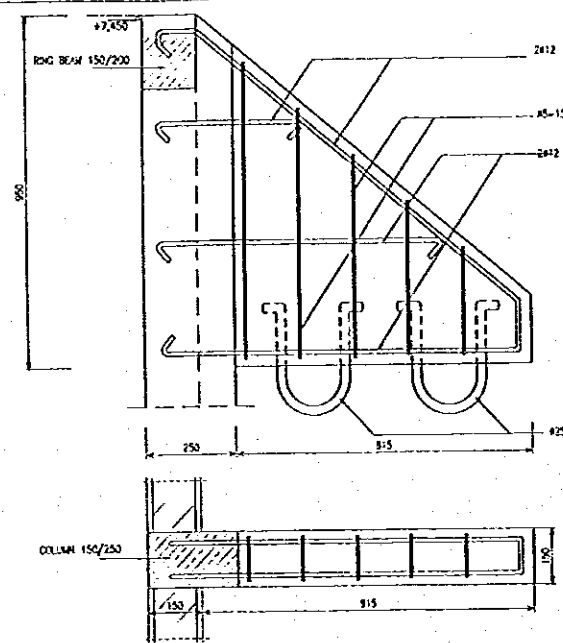
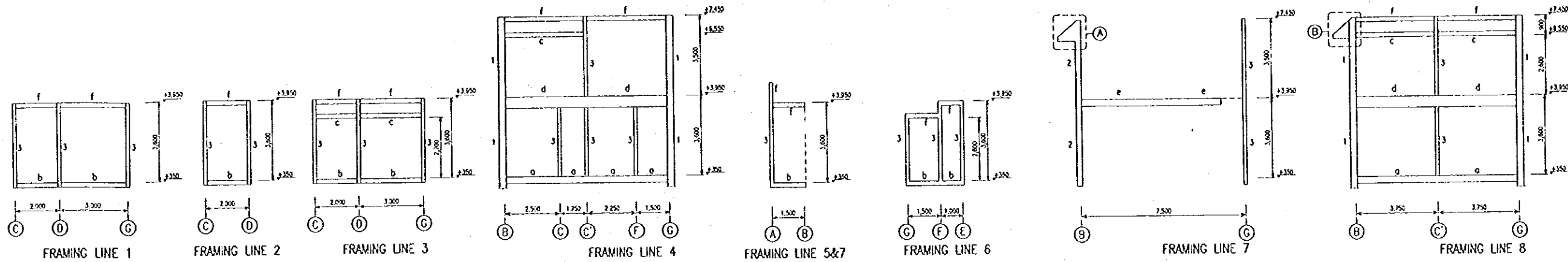


DRAINAGE BOX
SCALE B



NO.	DATE	REVISIONS	ORIGINATED	DESIGNED	APPROVED	APPROVED

	THE REPUBLIC OF INDONESIA MINISTRY OF PUBLIC WORKS DIRECTORATE GENERAL OF WATER RESOURCES DEVELOPMENT AND DIRECTORATE GENERAL OF HUMAN SETTLEMENT	PROVINCE CENTRAL JAWA
	JAWA TUNJELINGA FLOOD CONTROL PROJECT COMPONENT : WEST FLOODWAY / GARANG RIVER IMPROVEMENT SIMONGAN WEIR MANAGEMENT COMPLEX OPERATION / MANAGEMENT BUILDING DRAINAGE PLAN & DETAIL	PROJECT NAME FLOOD CONTROL, URBAN DRAINAGE AND WATER RESOURCES DEVELOPMENT IN SEMARANG IN THE REPUBLIC OF INDONESIA
	DESIGNED: <i>[Signature]</i> CHECKED: <i>[Signature]</i> CHIEF OF PLANNING AND DESIGN PROJECT MANAGER	DISTRICT SEMARANG CITY
	DATED: <i>[Date]</i> CONTRACT NO.	DRAWING NO. AA-100 WGS P2-SM-B-11 SHEET NO. 179

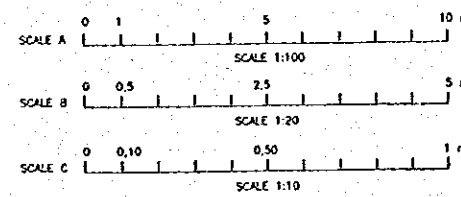


TYPICAL BEAM REINFORCEMENT								
	BEAM TYPE a	BEAM TYPE b	BEAM TYPE c	BEAM TYPE d		BEAM TYPE e		BEAM TYPE f
ARRANGEMENT				MIDSPAN	EDGE	MIDSPAN	EDGE	
TOP	3 Ø16	2 #12	2 #12	3 Ø16	4 Ø16	3 Ø16	2 Ø16	2 #12
MIDDLE	---	---	---	---	2#12	---	---	---
BOTTOM	3 Ø16	2 #12	2 #12	4 Ø16	3 Ø16	2 Ø16	3 Ø16	2 #12
STIRRUP	#5-150	#5-150	#5-150	#5-150	#5-150	#5-150	#5-150	#5-150

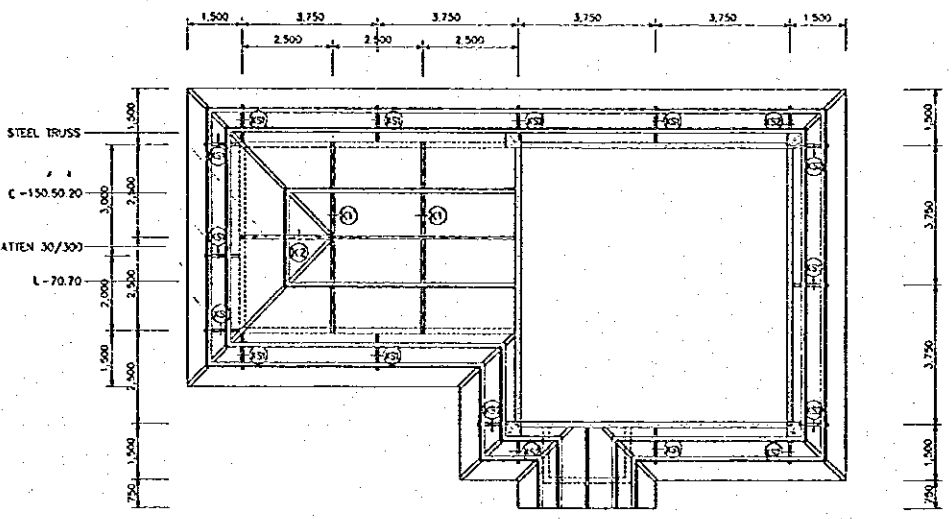
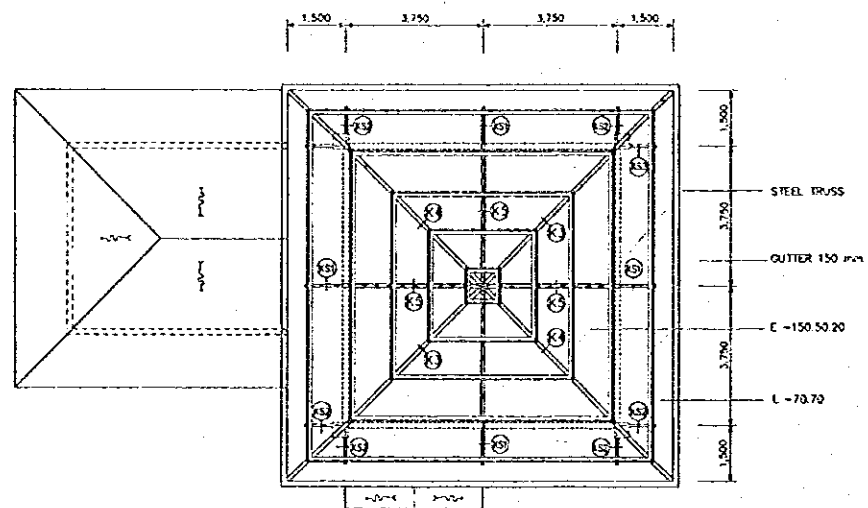
TYPICAL COLUMN REINFORCEMENT			
	COLUMN TYPE 1	COLUMN TYPE 2	COLUMN TYPE 3
ARRANGEMENT	8 Ø16	4 Ø16	4 #12
STIRRUP	#5-150	#5-150	#5-150

TYPICAL SECTION OF BEAM REINFORCEMENT	
SCALE C	C4/102

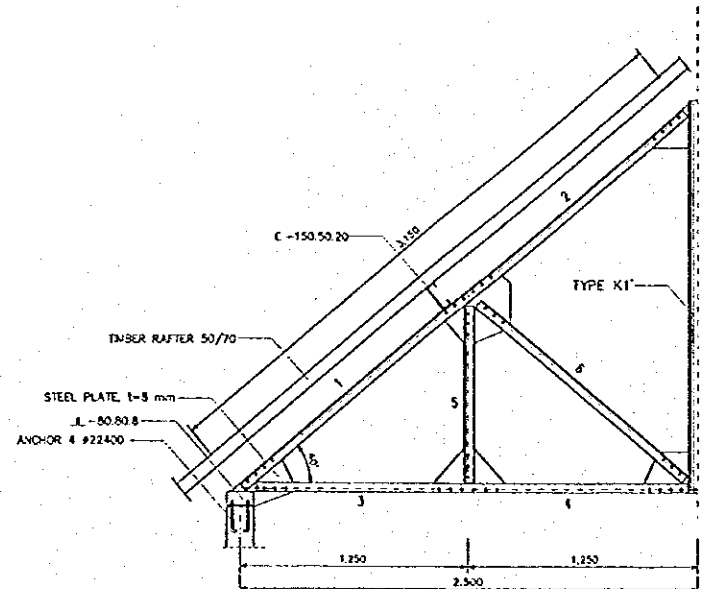
TYPICAL SECTION OF COLUMN REINFORCEMENT	
SCALE C	C4/102



THE REPUBLIC OF INDONESIA MINISTRY OF PUBLIC WORKS DIRECTORATE GENERAL OF WATER RESOURCES DEVELOPMENT AND DIRECTORATE GENERAL OF HUMAN SETTLEMENT				PROVINCE CENTRAL JAVA
IRATUNSELLUNA FLOOD CONTROL PROJECT COMPONENT : WEST FLOODWAY/GARANG RIVER IMPROVEMENT SIMONGAN WEIR/MANAGEMENT BUILDING FRAMING ELEVATION, STAIR SECTION & DETAIL				PROJECT NAME FLOOD CONTROL, SEWER DRAINAGE AND WATER RESOURCES DEVELOPMENT IN SEMARANG IN THE REPUBLIC OF INDONESIA
JAWA INTERNATIONAL COOPERATION AGENCY CIVIL ENGINEERING CO. LTD. IN ASSOCIATION WITH PACIFIC CONSULTANTS INTERNATIONAL AND PACIFIC INTERNATIONAL INC.				DISTRICT SEMARANG CITY
DESIGNED: [Signature] CHECKED: [Signature] CHIEF OF PLANNING AND DESIGN				DRAWING NO. K04-102/0-P2-SM-01-14 SHEET NO. 181
DATE: [] [] []				CONTRACT NO.
REVISIONS				PROJECT MANAGER
NO.	DATE	ORIGINATED	DESIGNED	APPROVED



ROOF PLAN
SCALE A

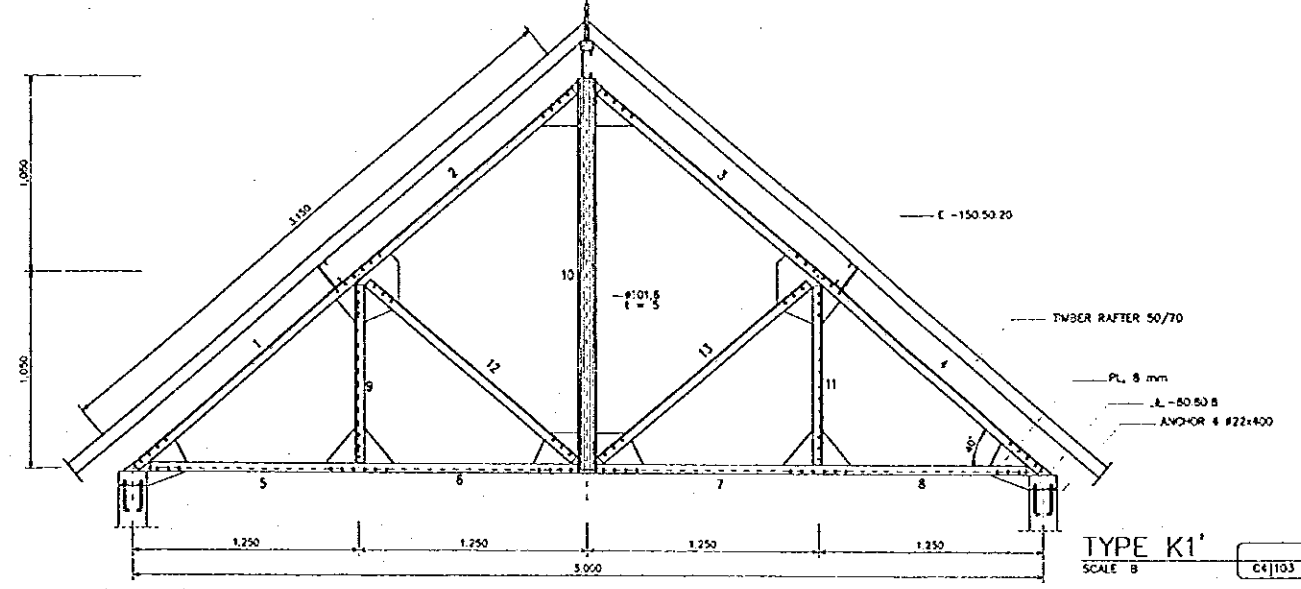


TYPE K2
SCALE B

MEMBER LIST K2 - 1 Pcs

LIST NUMBER	PROFILE	BOLT		DISTANCE		NOTE
		TOTAL	# mm	a mm	b mm	
1	T-50.50.5	4-3	14	40	80	
2	T-50.50.5	3-4	14	40	80	
3	L-50.50.5	4-3	14	40	80	
4	L-50.50.5	3-4	14	40	80	
5	T-50.50.5	3-3	14	40	80	
6	T-50.50.5	3-3	14	40	80	

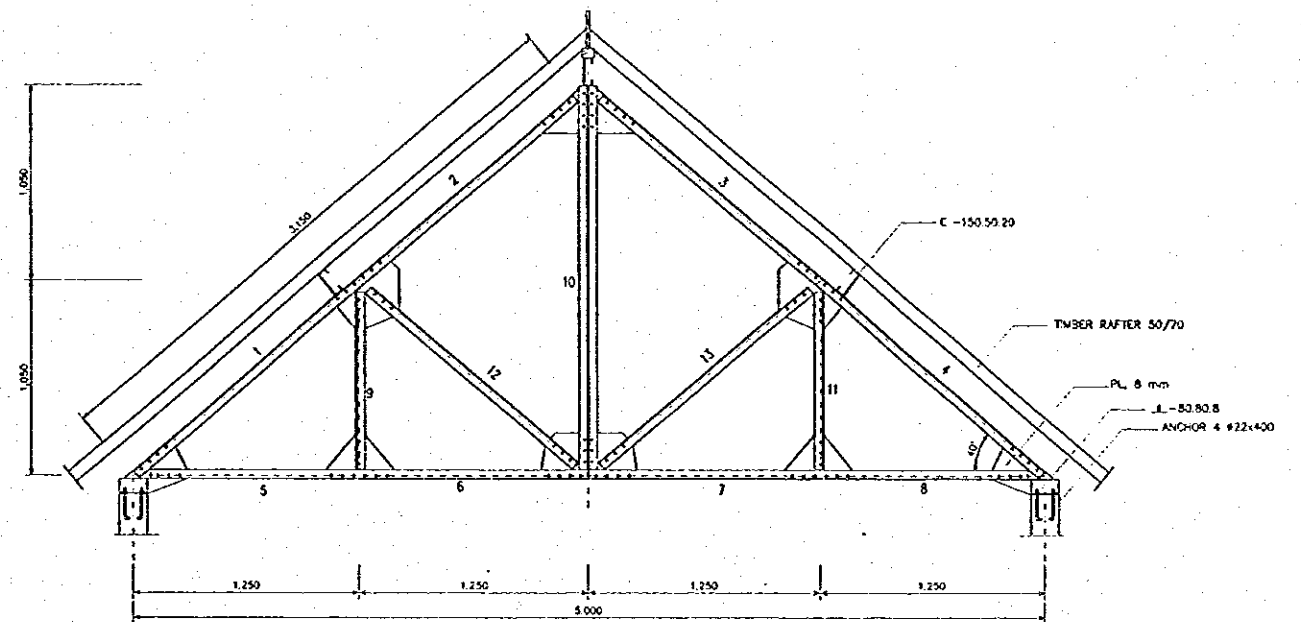
39 x 30 x 0 x 0



TYPE K1
SCALE B

MEMBER LIST K1 - 1 Pcs

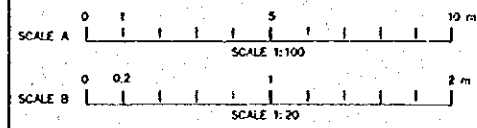
LIST NUMBER	PROFILE	BOLT		DISTANCE		NOTE
		TOTAL	# mm	a mm	b mm	
1-4	T-50.50.5	4-3	14	40	80	
2-3	T-50.50.5	3-4	14	40	80	
5-8	L-50.50.5	4-3	14	40	80	
6-7	L-50.50.5	3-4	14	40	80	
9-11	T-50.50.5	3-3	14	40	80	
10	PPE #101.6	-	-	-	-	
12-13	T-50.50.5	3-3	14	40	80	



TYPE K1
SCALE B

MEMBER LIST K1 - 1 Pcs

LIST NUMBER	PROFILE	BOLT		DISTANCE		NOTE
		TOTAL	# mm	a mm	b mm	
1-4	T-50.50.5	4-3	14	40	80	
2-3	T-50.50.5	3-4	14	40	80	
5-8	L-50.50.5	4-3	14	40	80	
6-7	L-50.50.5	3-4	14	40	80	
9-11	T-50.50.5	3-3	14	40	80	
10	L-50.50.5	4-4	14	40	80	
12-13	T-50.50.5	3-3	14	40	80	



THE REPUBLIC OF INDONESIA
MINISTRY OF PUBLIC WORKS
DIRECTORATE GENERAL OF WATER RESOURCES DEVELOPMENT AND DIRECTORATE GENERAL OF HUMAN SETTLEMENT

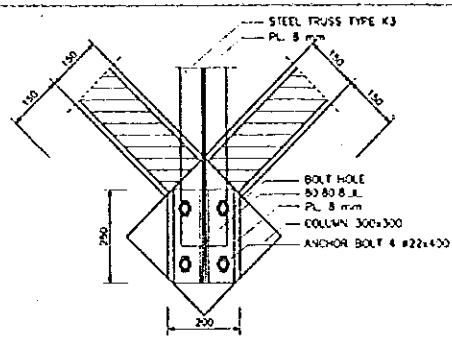
IRATUNSELUNA FLOOD CONTROL PROJECT
COMPONENT : WEST FLOODWAY/GARANG RIVER IMPROVEMENT
SIMONGAN WEIR MANAGEMENT COMPLEX
OPERATION/ MANAGEMENT BUILDING
ROOF PLAN, TYPICAL TRUSS & DETAIL

JAPAN INTERNATIONAL COOPERATION AGENCY
CIVIL ENGINEERING CO. LTD. IN ASSOCIATION WITH
PACIFIC CONSULTANTS INTERNATIONAL AND
PACIFIC INTERNATIONAL, INC.

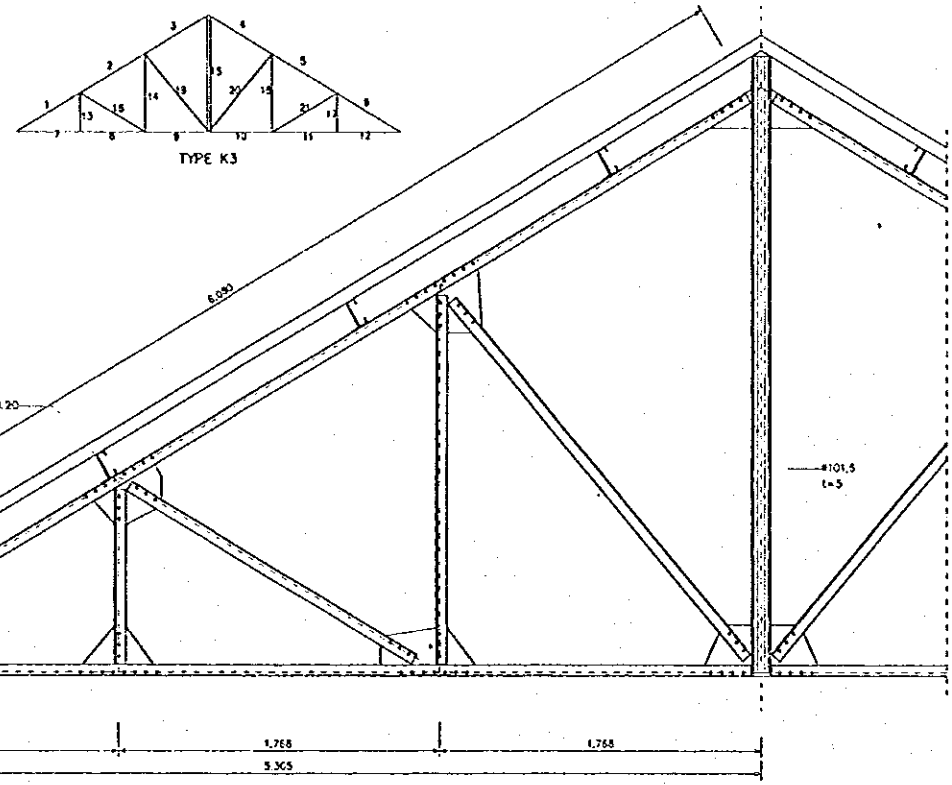
DESIGNED: [Signature]
CHECKED: [Signature]
CHIEF OF PLANNING AND DESIGN
PROJECT MANAGER

PROVINCE: CENTRAL JAVA
PROJECT NAME: FLOOD CONTROL, URBAN DRAINAGE AND WATER RESOURCES DEVELOPMENT IN SEMARANG IN THE REPUBLIC OF INDONESIA
DISTRICT: SEMARANG CITY
DRAWING NO: C4-103/SG-P2-SM-B-10
SHEET NO. 183
DATE: [Blank]
CONTRACT NO. [Blank]

NO.	DATE	REVISIONS	ORIGINATED	DESIGNED	APPROVED	APPROVED



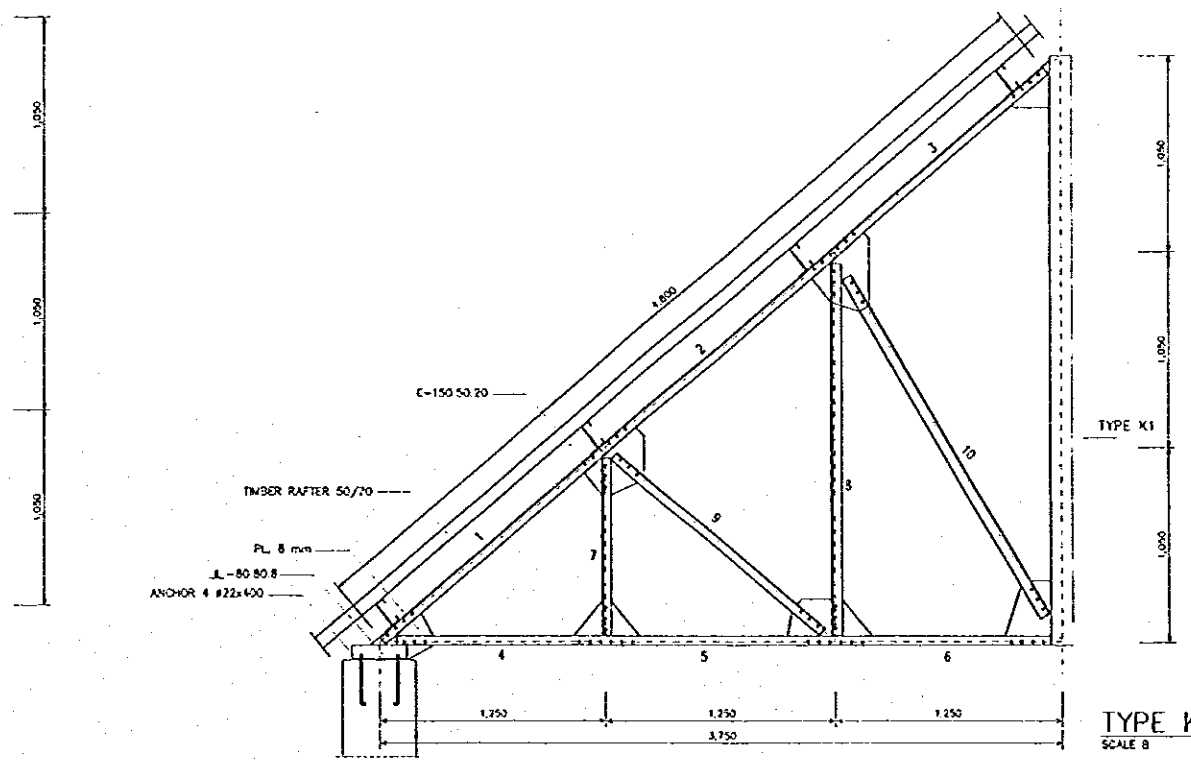
DETAIL A
SCALE C
C4/104



TYPE K3
SCALE B
C4/104

MEMBER LIST K3 - 1 Pcs

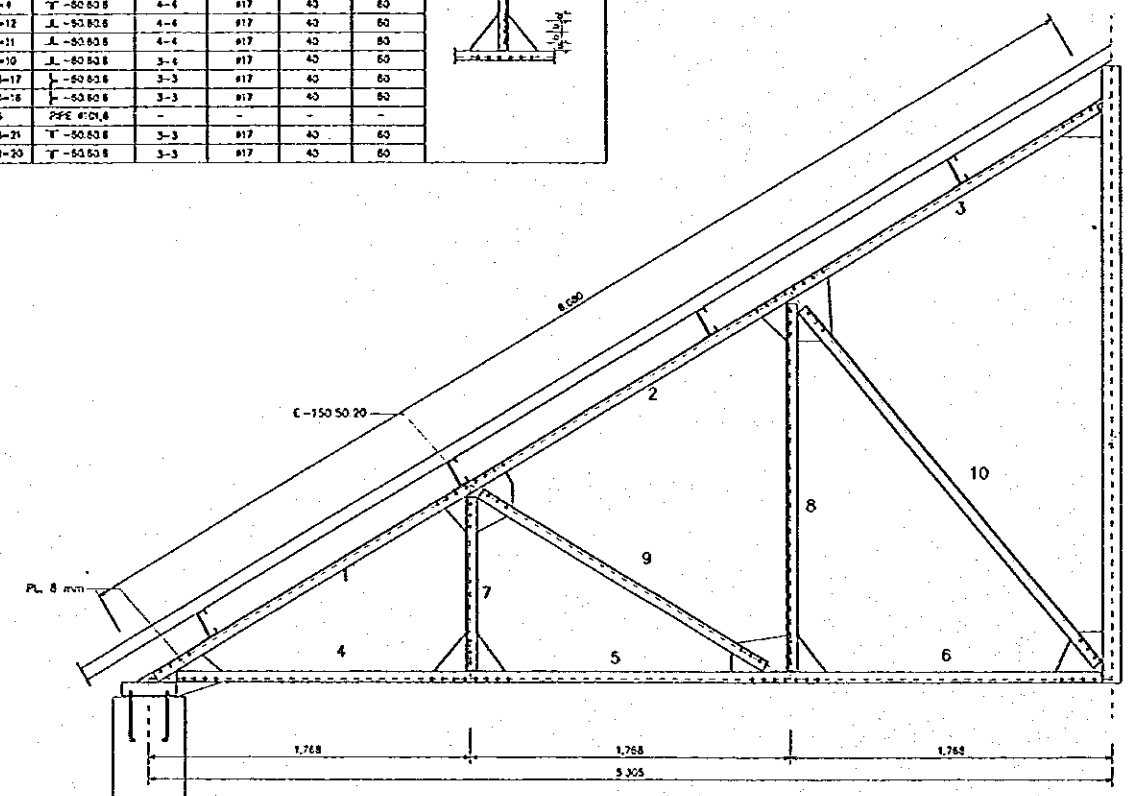
LIST NUMBER	PROFILE	TOTAL	BOLT			NOTE
			# mm	a mm	b mm	
1-5	T-80.80.8	4-4	#17	40	60	
2-5	T-80.80.8	4-4	#17	40	60	
3-4	T-80.80.8	4-4	#17	40	60	
7-12	L-80.80.8	4-4	#17	40	60	
8-11	L-80.80.8	4-4	#17	40	60	
9-10	L-80.80.8	3-4	#17	40	60	
13-17	L-80.80.8	3-3	#17	40	60	
14-18	L-80.80.8	3-3	#17	40	60	
15	PIPE #101.5	-	-	-	-	
15-21	T-80.80.8	3-3	#17	40	60	
18-20	T-80.80.8	3-3	#17	40	60	



TYPE K5
SCALE B
C4/104

MEMBER LIST K5 - 5 Pcs

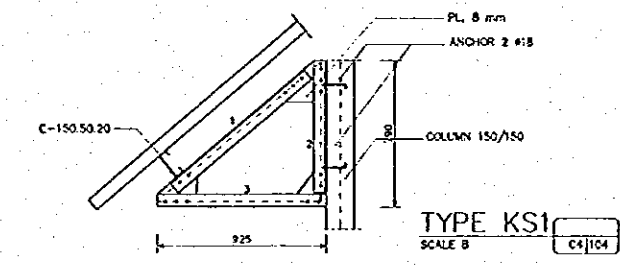
LIST NUMBER	PROFILE	TOTAL	BOLT			NOTE
			# mm	a mm	b mm	
1	T-80.80.8	2-3	#17	40	60	
2	T-80.80.8	3-3	#17	40	60	
3	T-80.80.8	3-4	#17	40	60	
4	L-80.80.8	4-3	#17	40	60	
5	L-80.80.8	3-3	#17	40	60	
6	L-80.80.8	3-4	#17	40	60	
7	T-80.80.8	3-3	#17	40	60	
8	L-80.80.8	3-3	#17	40	60	
9	T-80.80.8	3-3	#17	40	60	
10	T-80.80.8	3-3	#17	40	60	



TYPE K4
SCALE B
C4/104

MEMBER LIST K4 - 1 Pcs

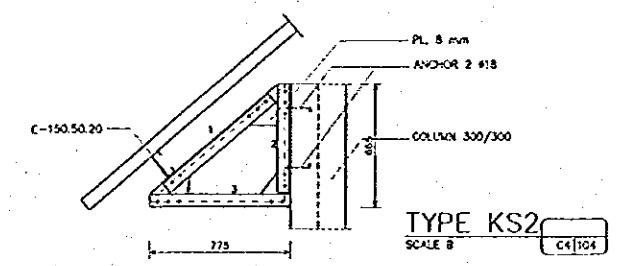
LIST NUMBER	PROFILE	TOTAL	BOLT			NOTE
			# mm	a mm	b mm	
1	T-80.80.8	4-4	#17	40	60	
2	T-80.80.8	4-4	#17	40	60	
3	T-80.80.8	4-4	#17	40	60	
4	L-80.80.8	4-4	#17	40	60	
5	L-80.80.8	4-4	#17	40	60	
6	L-80.80.8	3-4	#17	40	60	
7	T-80.80.8	3-3	#17	40	60	
8	L-80.80.8	3-3	#17	40	60	
9	T-80.80.8	3-3	#17	40	60	
10	T-80.80.8	3-3	#17	40	60	
11	PIPE #101.5	-	-	-	-	



TYPE KS1
SCALE B
C4/104

MEMBER LIST TYPE KS1 - 14 Pcs

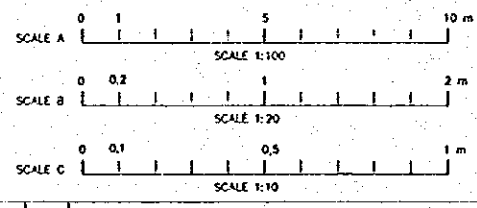
LIST NUMBER	PROFILE	TOTAL	BOLT			NOTE
			# mm	a mm	b mm	
1	T-70.70.7	2-3	14	40	60	
2	L-70.70.7	3-2	14	40	60	
3	L-70.70.7	3-2	14	40	60	



TYPE KS2
SCALE B
C4/104

MEMBER LIST TYPE KS2 - 15 Pcs

LIST NUMBER	PROFILE	TOTAL	BOLT			NOTE
			# mm	a mm	b mm	
1	T-70.70.7	2-3	14	40	60	
2	L-70.70.7	3-2	14	40	60	
3	L-70.70.7	3-2	14	40	60	



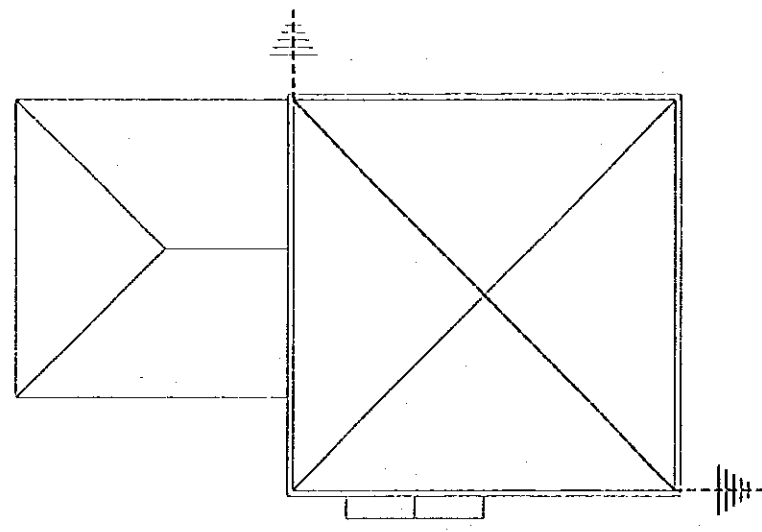
THE REPUBLIC OF INDONESIA
MINISTRY OF PUBLIC WORKS
DIRECTORATE GENERAL OF WATER RESOURCES DEVELOPMENT
AND DIRECTORATE GENERAL OF HUMAN SETTLEMENT

JRATUNSELUNA FLOOD CONTROL PROJECT
COMPONENT - WEST FLOODWAY/GARANG RIVER IMPROVEMENT
SIMONGAN WEIR MANAGEMENT COMPLEX
OPERATION/MANAGEMENT BUILDING
DETAIL TRUSS

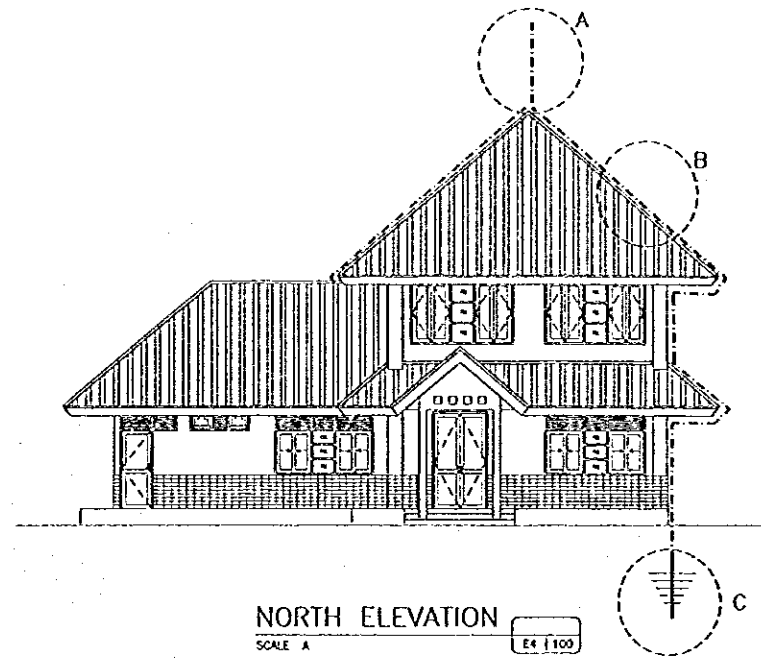
PROVINCE: CENTRAL JAVA
PROJECT NAME: FLOOD CONTROL, URBAN GRABAGE AND WATER RESOURCES DEVELOPMENT OF SEMARANG IN THE REPUBLIC OF INDONESIA
DISTRICT: SEMARANG CITY
DRAWING NO: C4-104/P2-SM-B-18
SHEET NO: 184
DATE: CONTRACT 30

DESIGNED: [Signature]
CHECKED: [Signature]
CHIEF OF PLANNING AND DESIGN
PROJECT MANAGER

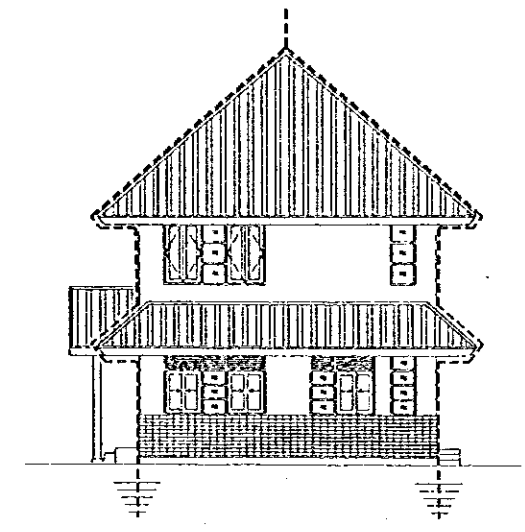
NO	DATE	REVISIONS	ORIGINATED	DESIGNED	APPROVED



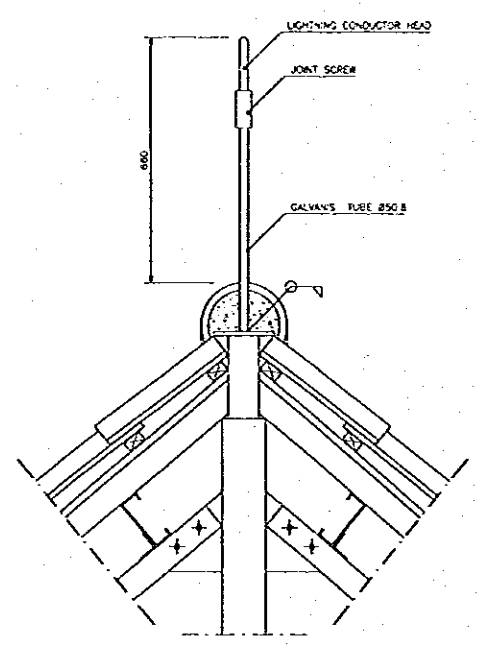
LIGHTNING CONDUCTOR DIAGRAM
SCALE A E4 | 100



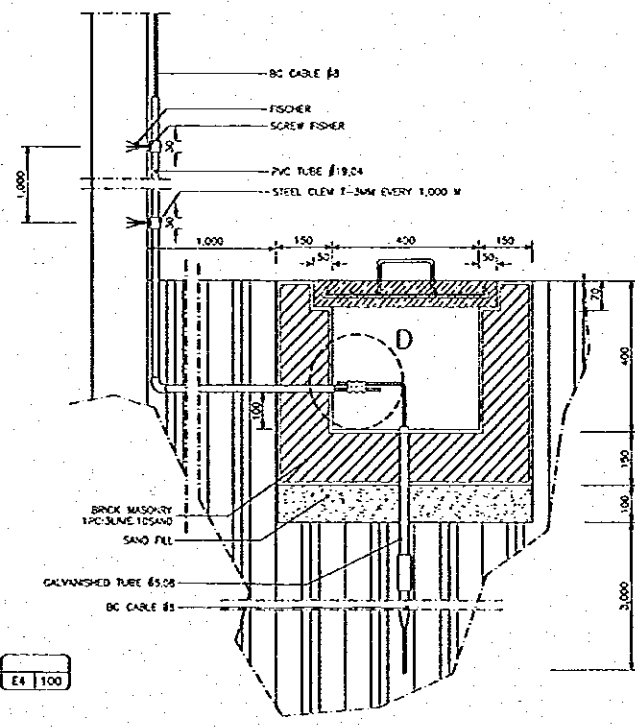
NORTH ELEVATION
SCALE A E4 | 100



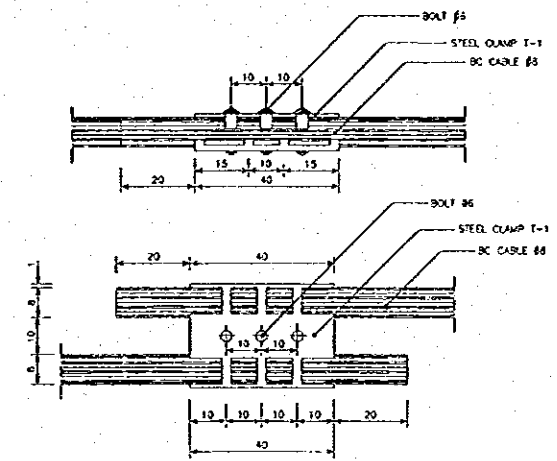
EAST ELEVATION
SCALE A E4 | 100



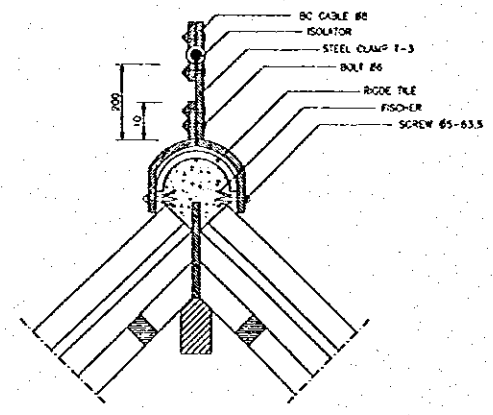
DETAIL A
SCALE B E4 | 100



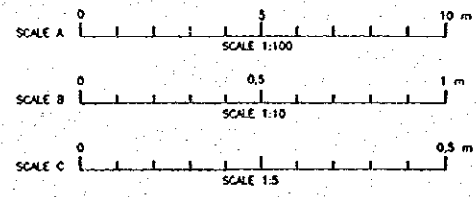
DETAIL C
SCALE B E4 | 100



DETAIL D
SCALE C E4 | 100



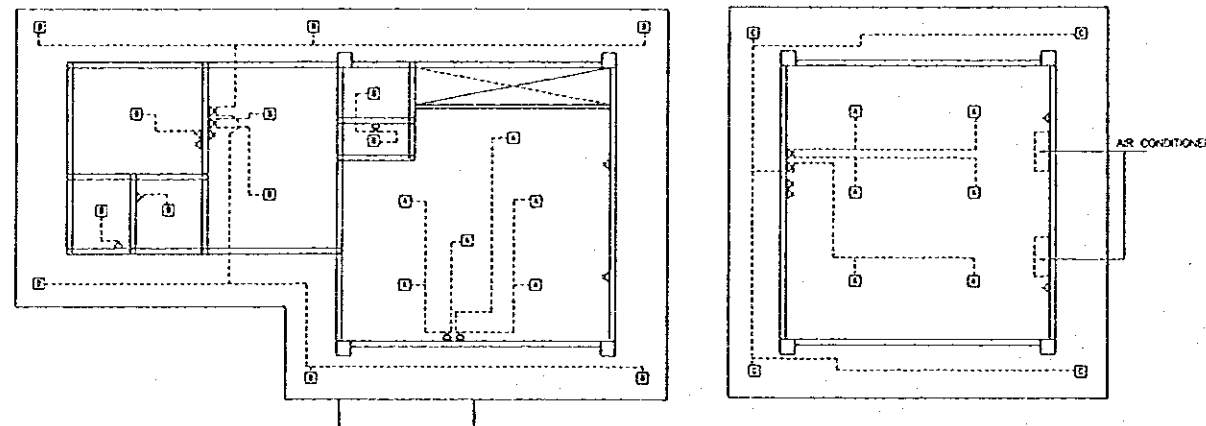
DETAIL B
SCALE B E4 | 100



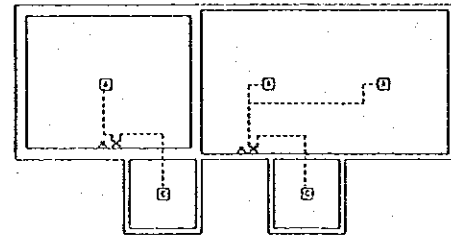
NO.	DATE	REVISIONS	ORIGINATED	DESIGNED	APPROVED	APPROVED

	THE REPUBLIC OF INDONESIA MINISTRY OF PUBLIC WORKS DIRECTORATE GENERAL OF WATER RESOURCES DEVELOPMENT AND DIRECTORATE GENERAL OF HUMAN SETTLEMENT	PROVINCE CENTRAL JAVA
	JATUNSELUNA FLOOD CONTROL PROJECT COMPONENT : WEST FLOODWAY / GARANG RIVER IMPROVMENT SIMONGAN WEIR MANAGEMENT COMPLEX OPERATION/MANAGEMENT BUILDING LIGHTNING PLAN ONE LINE ELECTRICAL DIAGRAM	PROJECT NAME FLOOD CONTROL, LEAKAGE REDUCTION AND WATER RESOURCES DEVELOPMENT OF SEMARANG IN THE REPUBLIC OF INDONESIA
	JAPAN INTERNATIONAL COOPERATION AGENCY JICA ENGINEERING CO. LTD. IN ASSOCIATION WITH PACIFIC CONSULTANTS INTERNATIONAL AND JAWA INTERNATIONAL, INC.	DISTRICT SEMARANG CITY
	DESIGNED CHECKED DATE	SHEET NO. 185 CONTRACT NO.

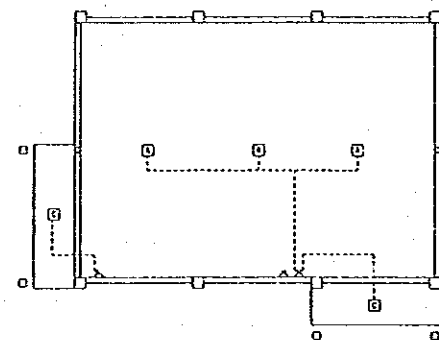
LIGHTING PLAN
SCALE A



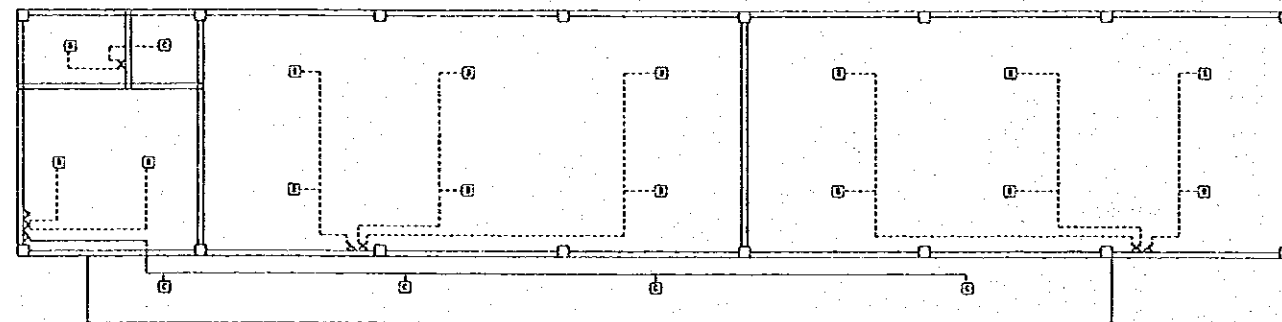
CONTROL OFFICE



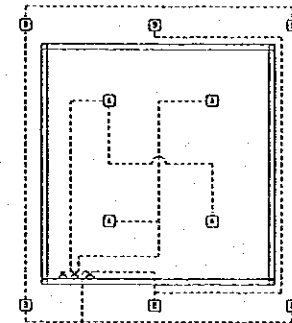
ELECTRICAL BUILDING



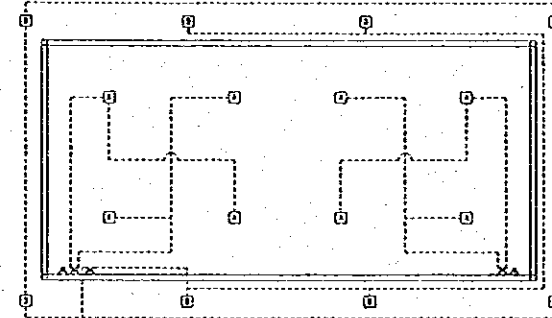
STORAGE HOUSE



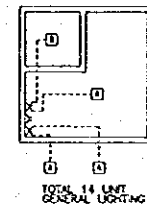
MAINTENANCE AND OFFICE EQUIPMENT STORAGE



CONTROL HOUSE I



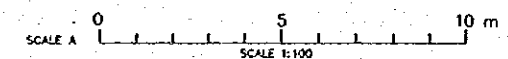
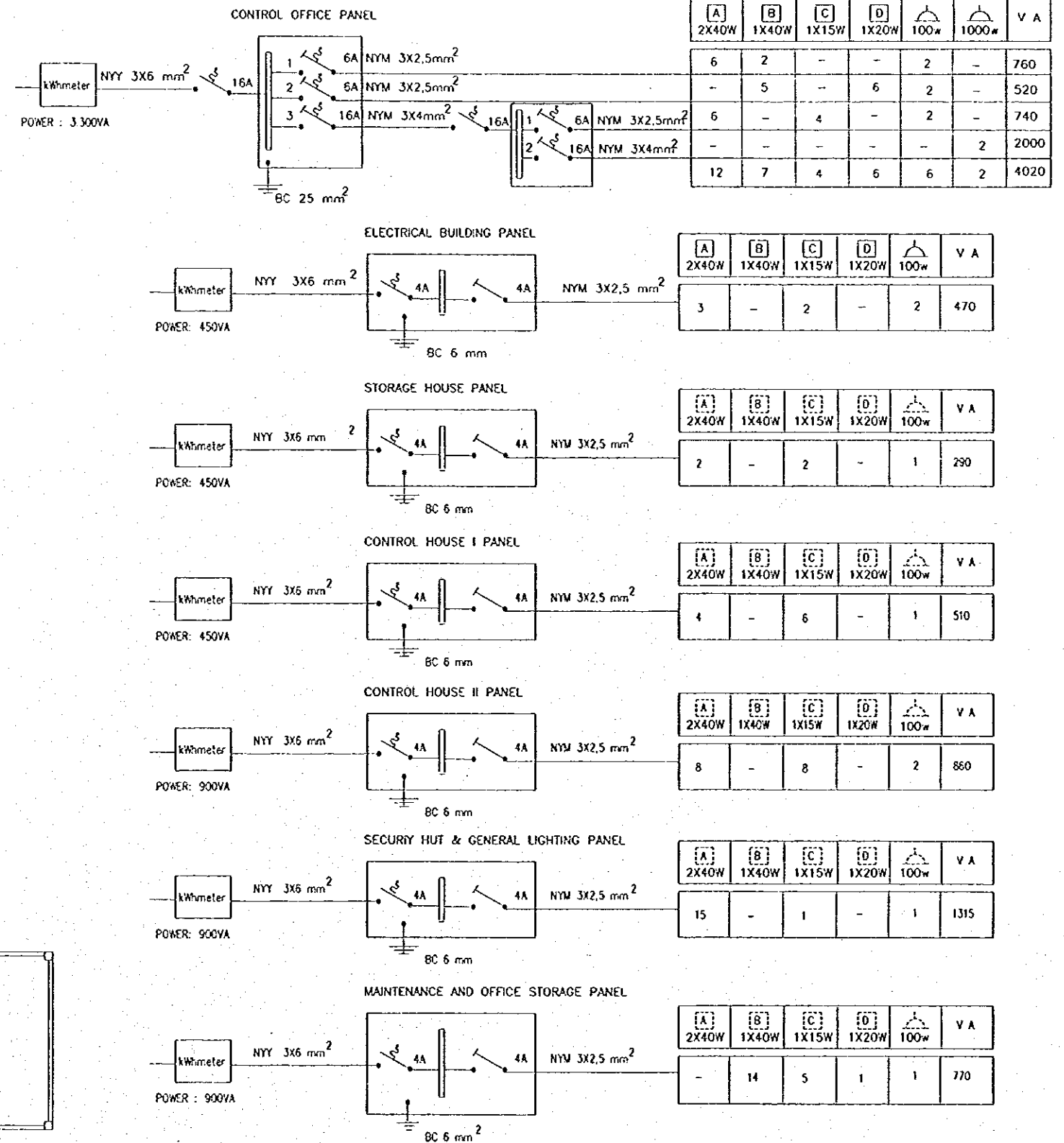
CONTROL HOUSE II



SECURITY HUT

TOTAL 14 LAMP
GENERAL LIGHTING

ONE LINE ELECTRICAL DIAGRAM
NTS



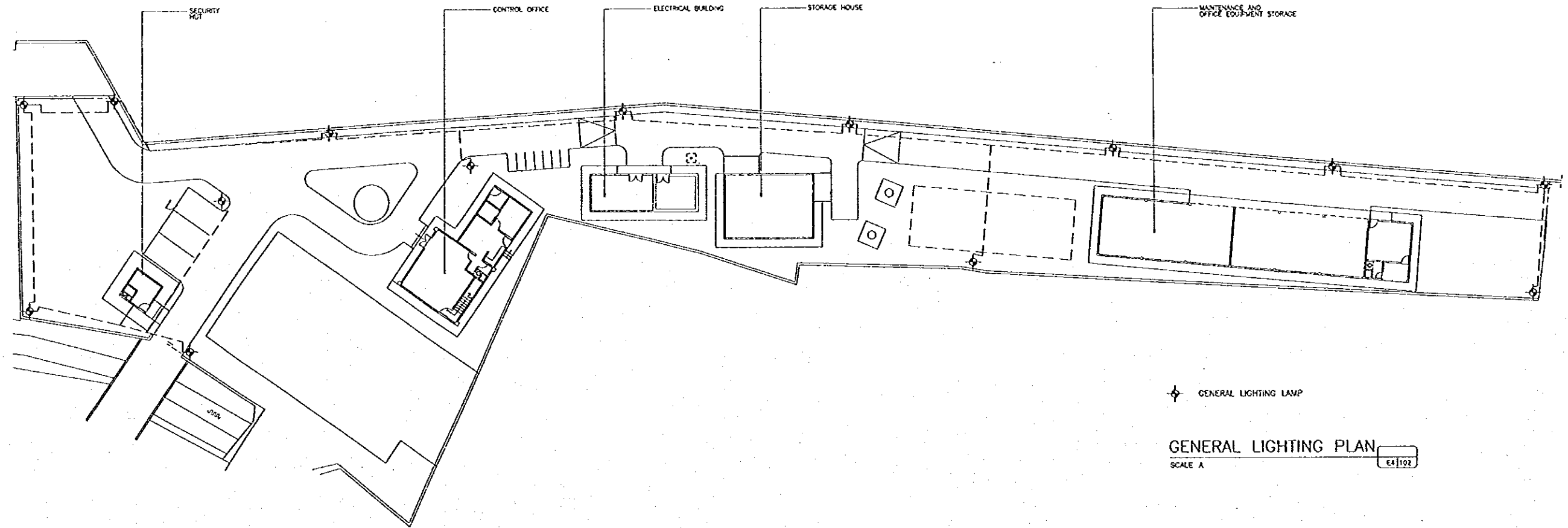
NO.	DATE	REVISIONS	ORIGINATED	DESIGNED	APPROVED

THE REPUBLIC OF INDONESIA
MINISTRY OF PUBLIC WORKS
DIRECTORATE GENERAL OF WATER RESOURCES DEVELOPMENT
AND DIRECTORATE GENERAL OF HUMAN SETTLEMENT

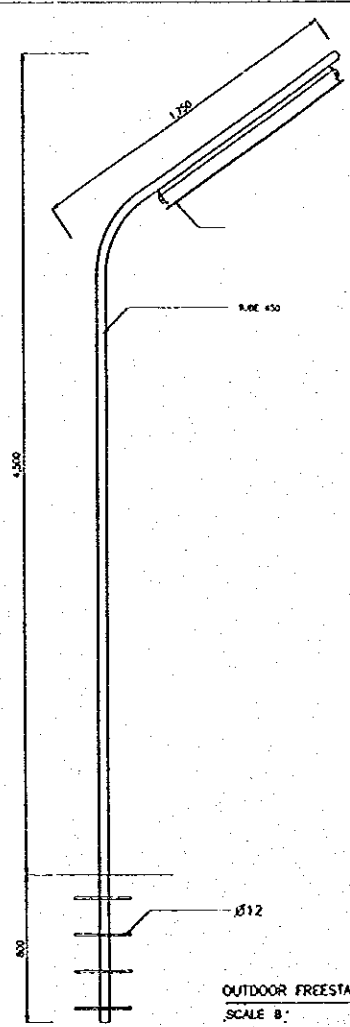
PROVINCE: CENTRAL JAVA
PROJECT NAME: JRAFUNSELUNA FLOOD CONTROL PROJECT
COMPONENT: WEST FLOODWAY/GARANG RIVER IMPROVEMENT
SIMONGAN WEIR MANAGEMENT COMPLEX
OPERATION/MANAGEMENT BUILDING
LIGHTING PLAN ONE LINE ELECTRICAL DIAGRAM

DESIGNED: [Signature]
CHECKED: [Signature]
DATE: [Date]
CONTRACT NO: [Number]

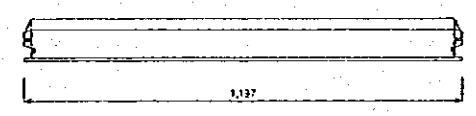
CHIEF OF PLANNING AND DESIGN
PROJECT MANAGER



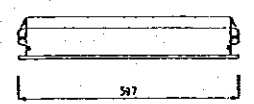
GENERAL LIGHTING PLAN
SCALE A



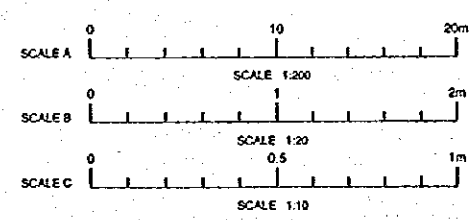
OUTDOOR FREESTANDING LIGHTING
SCALE B



2X40W & 1X40W LAMP HOUSING
SCALE C

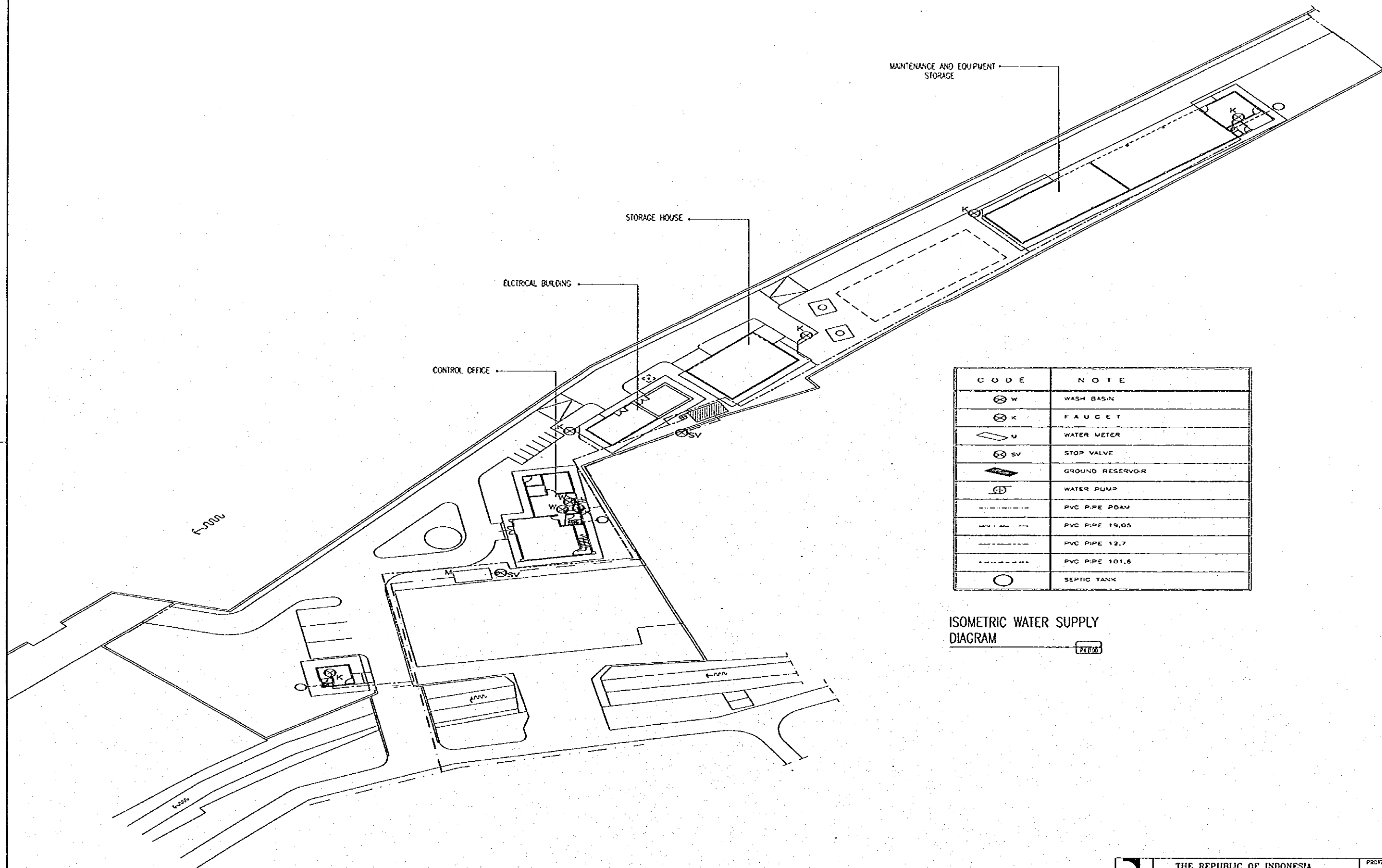


2X20W & 1X20W LAMP HOUSING
SCALE C



NO.	DATE	REVISIONS	ORIGINATED	DESIGNED	APPROVED

<p>THE REPUBLIC OF INDONESIA MINISTRY OF PUBLIC WORKS DIRECTORATE GENERAL OF WATER RESOURCES DEVELOPMENT AND DIRECTORATE GENERAL OF HUMAN SETTLEMENT</p>	<p>PROVINCE CENTRAL JAVA</p>	
	<p>PROJECT NAME FLOOD CONTROL, SEWER DRAINAGE AND WATER RESOURCES DEVELOPMENT OF SEMARANG IN THE REPUBLIC OF INDONESIA</p>	
	<p>DISTRICT SEMARANG CITY</p>	
	<p>DRAWING NO. E4-102/19-P2-SM-B-10 SHEET NO. 187</p>	
<p>COMPONENT : WEST FLOODWAY / GARANG RIVER IMPROVMENT SIMONGAN WEIR MANAGEMENT BUILDING OPERATION/MANAGEMENT BUILDING GENERAL LIGHTING PLAN</p>		<p>DATE </p>
<p>JAPAN INTERNATIONAL COOPERATION AGENCY CTS ENGINEERING CO. LTD. IN ASSOCIATION WITH PACIFIC CONSULTANTS INTERNATIONAL AND PACIFIC INTERNATIONAL INC.</p>		<p>DESIGNED </p> <p>CHECKED </p>
<p>CHIEF OF PLANNING AND DESIGN PROJECT MANAGER</p>		<p>DATE </p> <p>CONTRACT NO. </p>

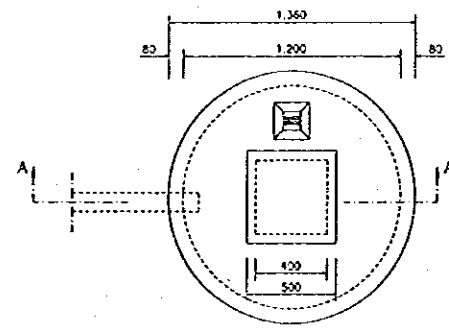


CODE	NOTE
⊗ W	WASH BASIN
⊗ K	FAUCET
◇ M	WATER METER
⊗ SV	STOP VALVE
▭	GROUND RESERVOIR
⊕	WATER PUMP
---	PVC PIPE PDAM
---	PVC PIPE 19.05
---	PVC PIPE 12.7
---	PVC PIPE 101.6
○	SEPTIC TANK

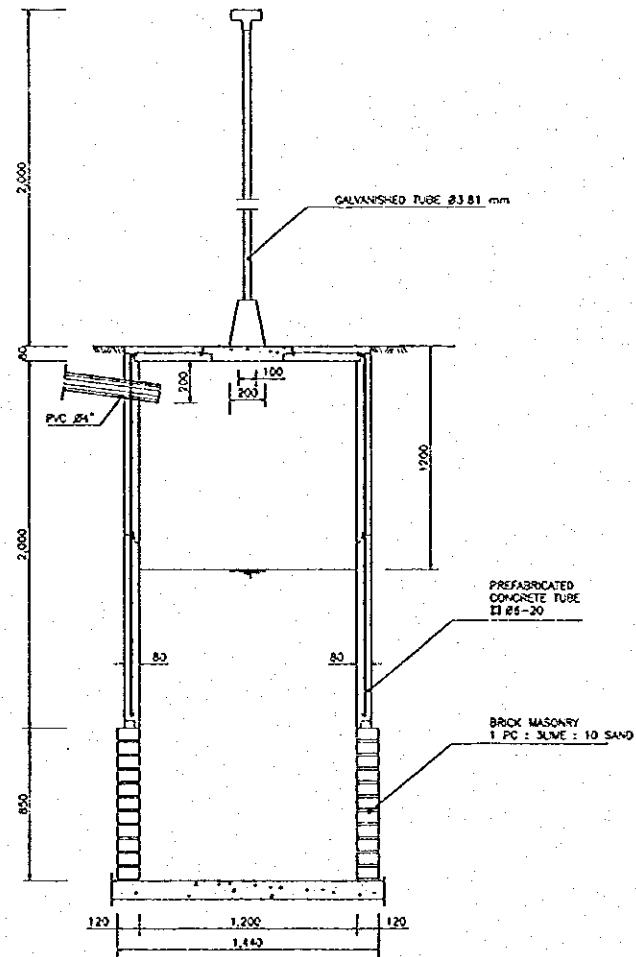
ISOMETRIC WATER SUPPLY
DIAGRAM

NO	DATE	REVISIONS	ORIGINATED	DESIGNED	APPROVED

	THE REPUBLIC OF INDONESIA MINISTRY OF PUBLIC WORKS DIRECTORATE GENERAL OF WATER RESOURCES DEVELOPMENT AND DIRECTORATE GENERAL OF HUMAN SETTLEMENT	PROVINCE CENTRAL JAVA
	IRATUNSELUWA FLOOD CONTROL PROJECT COMPONENT : WEST FLOODWAY/CARANG RIVER IMPROVEMENT SIMONGAN WEIR MANAGEMENT COMPLEX OPERATION/MANAGEMENT BUILDING ISOMETRIC WATER SUPPLY DIAGRAM	PROJECT NAME FLOOD CONTROL, URBAN DRAINAGE AND WATER RESOURCES DEVELOPMENT IN SEMARANG OF THE REPUBLIC OF INDONESIA
	JAWA INTERNATIONAL COOPERATION AGENCY CH ENGINEERING CO. LTD IN ASSOCIATION WITH PACIFIC CONSULTANTS INTERNATIONAL INC JAWO INTERNATIONAL INC	DISTRICT SEMARANG CITY
	DESIGNED CHECKED CHIEF OF PLANNING AND DESIGN PROJECT MANAGER	DRAWING NO. M-100/100/P2-SM-81-20 SHEET NO 188 DATE CONTRACT NO.

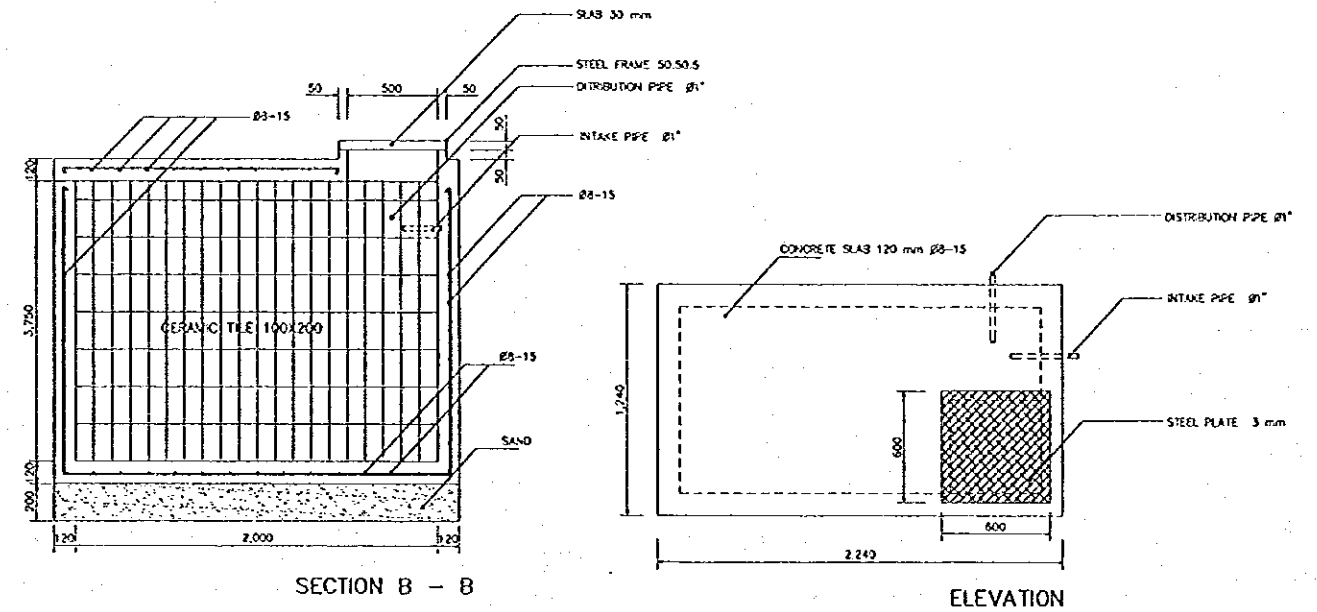


BEERPUT PLAN



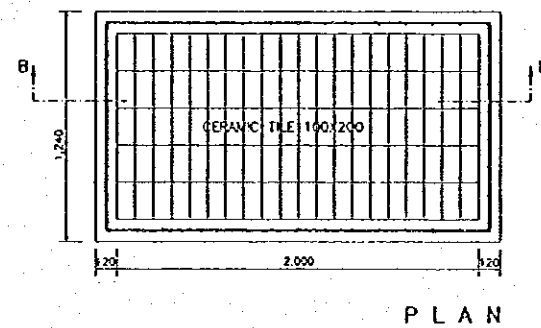
SECTION A - A

BEERPUT
SCALE A



SECTION B - B

ELEVATION

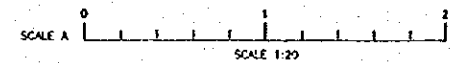


PLAN

GROUND RESERVOIR

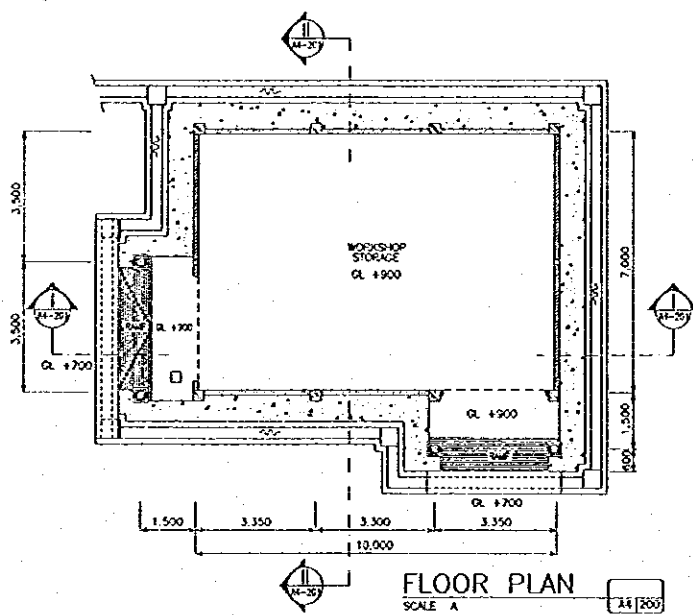
SCALE A

P4 | 101

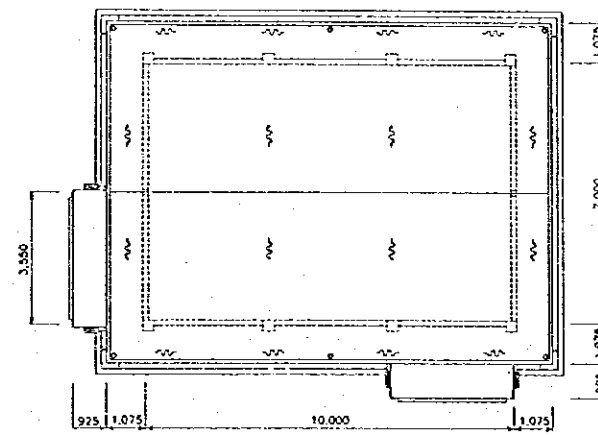


NO.	DATE	REVISIONS	ORIGINATED	DESIGNED	APPROVED

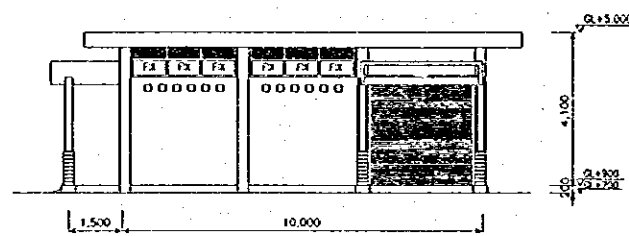
THE REPUBLIC OF INDONESIA MINISTRY OF PUBLIC WORKS DIRECTORATE GENERAL OF WATER RESOURCES DEVELOPMENT AND DIRECTORATE GENERAL OF HUMAN SETTLEMENT		PROVINCE CENTRAL JAVA
JRATUNSELUWA FLOOD CONTROL PROJECT COMPONENT : WEST FLOODWAY/CARANG RIVER IMPROVEMENT SIMONGAN WEIR MANAGEMENT COMPLEX OPERATION/MANAGEMENT BUILDING BEERPUT, GROUND RESERVOIR PLAN & DETAIL		PROJECT NAME FLOOD CONTROL, URBAN DRAINAGE AND WATER RESOURCES DEVELOPMENT IN SEMARANG OF THE REPUBLIC OF INDONESIA
JAWA INTERNATIONAL COOPERATION AGENCY CTE ENGINEERING CO. LTD IN ASSOCIATION WITH PACIFIC CONSULTANTS INTERNATIONAL AND JAWA INTERNATIONAL INC.		DISTRICT SEMARANG CITY
DESIGNED <i>[Signature]</i>	CHECKED <i>[Signature]</i>	DRAWING NO. P4-101/NO-P2-SM-B-21 SHEET NO. 101
APPROVED CHIEF OF PLANNING AND DESIGN <i>[Signature]</i>	PROJECT MANAGER <i>[Signature]</i>	DATE CONTRACT NO.



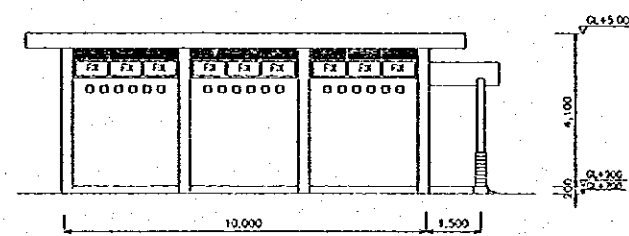
FLOOR PLAN
SCALE A A4|200



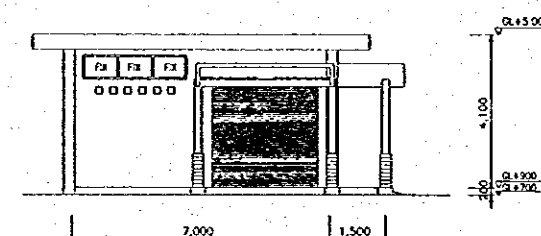
ROOF PLAN
SCALE A A4|200



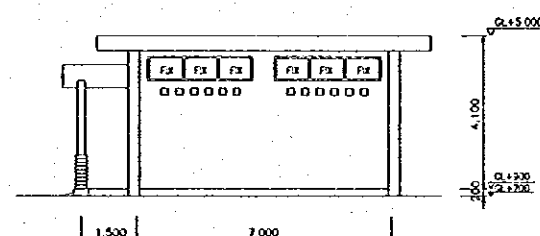
EAST ELEVATION
SCALE A A4|200



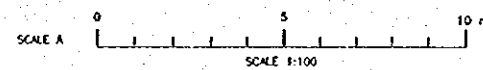
WEST ELEVATION
SCALE A A4|200



SOUTH ELEVATION
SCALE A A4|200

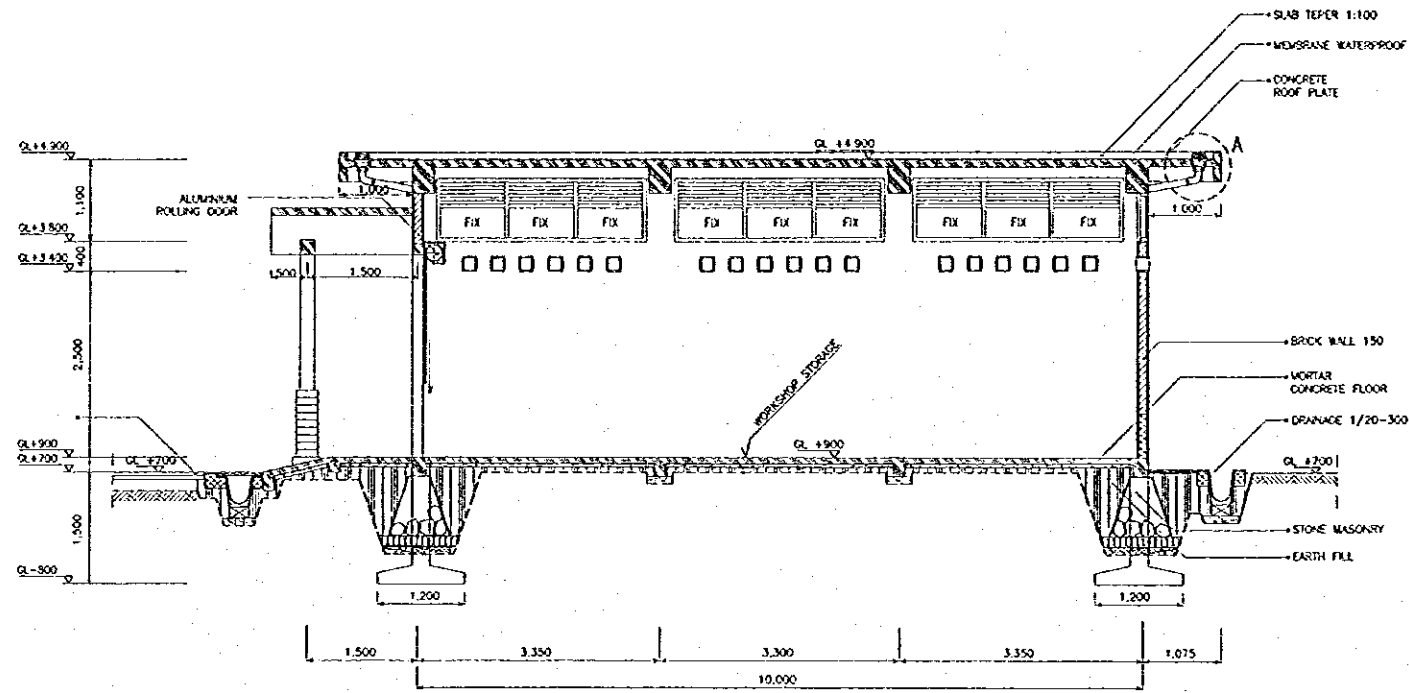


NORTH ELEVATION
SCALE A A4|200

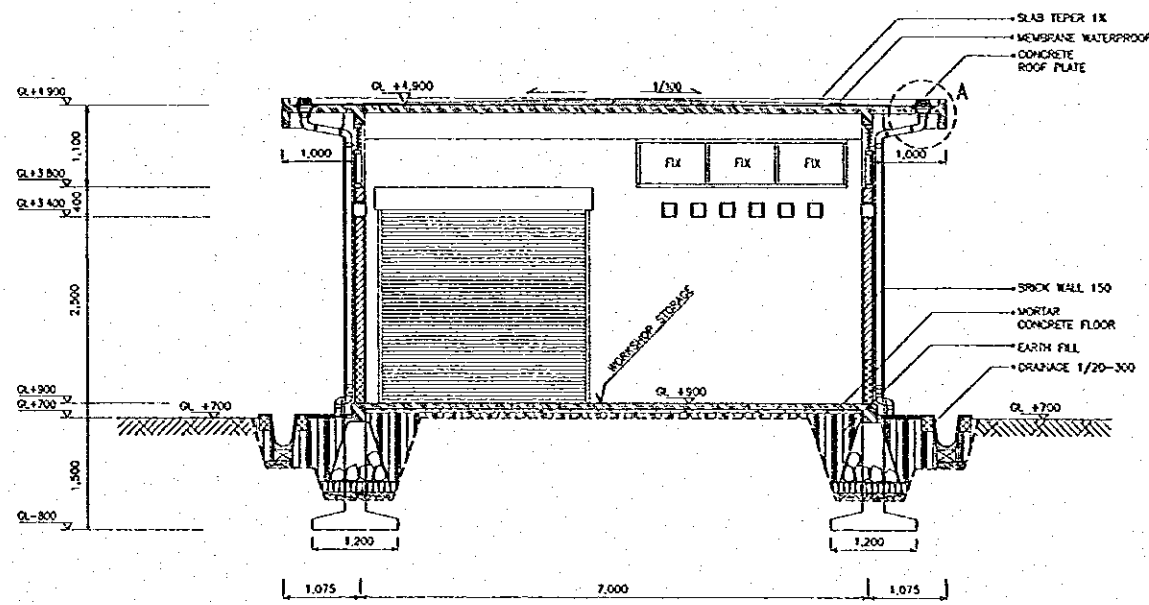


NO.	DATE	REVISIONS	ORIGINATED	DESIGNED	APPROVED

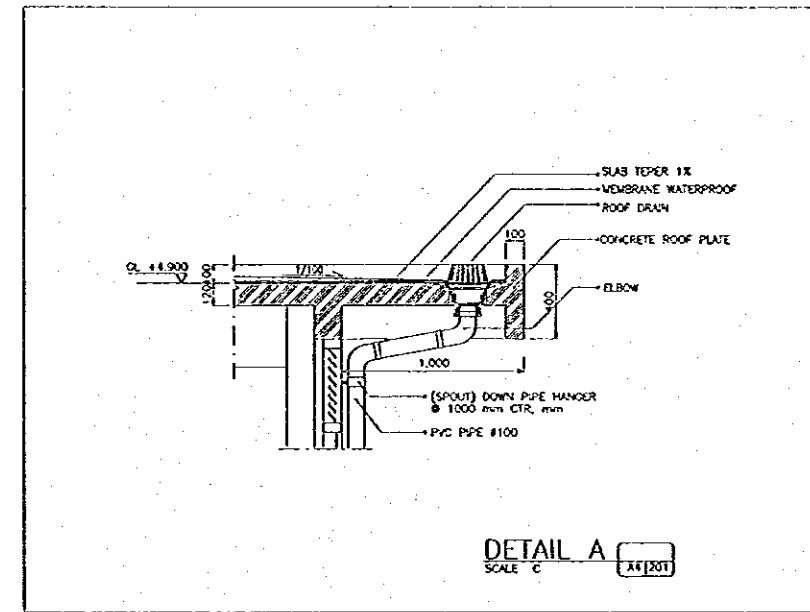
THE REPUBLIC OF INDONESIA MINISTRY OF PUBLIC WORKS DIRECTORATE GENERAL OF WATER RESOURCES DEVELOPMENT AND DIRECTORATE GENERAL OF HUMAN SETTLEMENT		PROVINCE CENTRAL JAVA
BRATUNGSILINA FLOOD CONTROL PROJECT COMPONENT : WEST FLOODWAY / GARANG RIVER IMPROVEMENT SIMONGAN WEIR MANAGEMENT COMPLEX STORAGE HOUSE 1 FLOOR PLAN, ROOF PLAN, CEILING PLAN & ELEVATION		PROJECT NAME FLOOD CONTROL, URBAN DRAINAGE AND WATER RESOURCES DEVELOPMENT BY SEMARANG IN THE REPUBLIC OF INDONESIA
LAFAP INTEGRAL COOPERATION SERVICE CRI ENGINEERING CO., LTD. IN ASSOCIATION WITH PACIFIC GENERAL PARTNERS INTERNATIONAL AND PABCO INTERNATIONAL, INC.		DISTRICT SEMARANG CITY
DESIGNED CHECKED		DRAWING NO. AI-200/WG P2-SM-B-22 SHEET NO. 1/1
CHIEF OF PLANNING AND DESIGN PROJECT MANAGER		DATE CONTRACT NO.



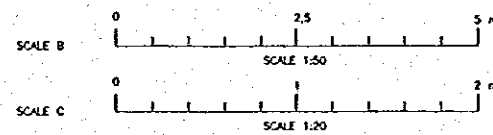
SECTION I-I
SCALE B



SECTION II-II
SCALE B

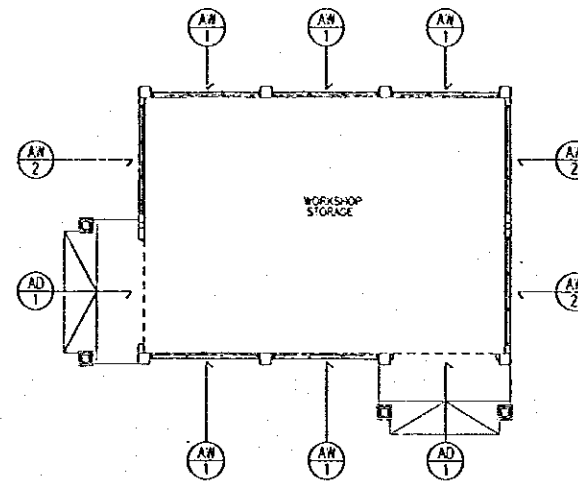


DETAIL A
SCALE C



NO.	DATE	REVISIONS	ORIGINATED	DESIGNED	APPROVED

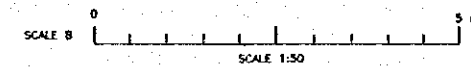
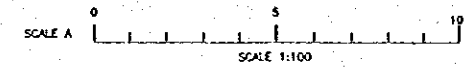
THE REPUBLIC OF INDONESIA MINISTRY OF PUBLIC WORKS DIRECTORATE GENERAL OF WATER RESOURCES DEVELOPMENT AND DIRECTORATE GENERAL OF HUMAN SETTLEMENT		PROVINCE CENTRAL JAWA
IRATUNSELUNA FLOOD CONTROL PROJECT COMPONENT: WEST FLOODWAY / GARANG RIVER IMPROVEMENT SIMONGAN WEIR MANAGEMENT COMPLEX STORAGE HOUSE I SECTION I-1 & SECTION II - II		PROJECT NAME FLOOD CONTROL, URBAN DRAINAGE AND WATER RESOURCES DEVELOPMENT IN SEMARANG IN THE REPUBLIC OF INDONESIA
LAFAN INTERNATIONAL COOPERATION AGENCY CITI ENGINEERING CO. LTD. (P) (INCORPORATED IN THE PACIFIC CONSULTANTS INTERNATIONAL, AND PAKSI INTERNATIONAL P.T.C.		DISTRICT SEMARANG CITY
DESIGNED CHECKED	DATE CONTRACT NO.	DRAWING NO. AA-201/WG-P2-SM-BI-25 SHEET NO. 151
CHIEF OF PLANNING AND DESIGN PROJECT MANAGER		



KEY PLAN
SCALE A

MARK	QTY	AD 1	2	AM 1	5	AM 2	3
SHAPE							
TYPE		ROLLING DOOR		LOUVRE & FIX		FIX	
MATERIAL	FINISH	FRAME	ALU	ALU	ALU	ALU	ALU
		PANEL	-	ALU & GLASS	AND	AND	AND
GLASS			-	CLEAR 5 mm THICK		CLEAR 5 mm THICK	
HARDWARE			METAL FITTINGS COMPLETE SET	METAL FITTINGS COMPLETE SET		METAL FITTINGS COMPLETE SET	
POSITION			WORKSHOP STORAGE	WORKSHOP STORAGE		WORKSHOP STORAGE	

DOOR & WINDOW SCHEDULE
SCALE B



LEGEND :

- AD : ALUMINIUM DOOR
- AM : ALUMINIUM WINDOW
- AL : ALUMINIUM LOUVER
- ADW : ALUMINIUM DOOR WINDOW
- DOORS & WINDOWS SYMBOL

MATERIAL :

- ALU : ALUMINIUM
- AND : ANODIZED
- FRG : POLYUR. CLEAR SEMILOSS

REFERENCE NO.

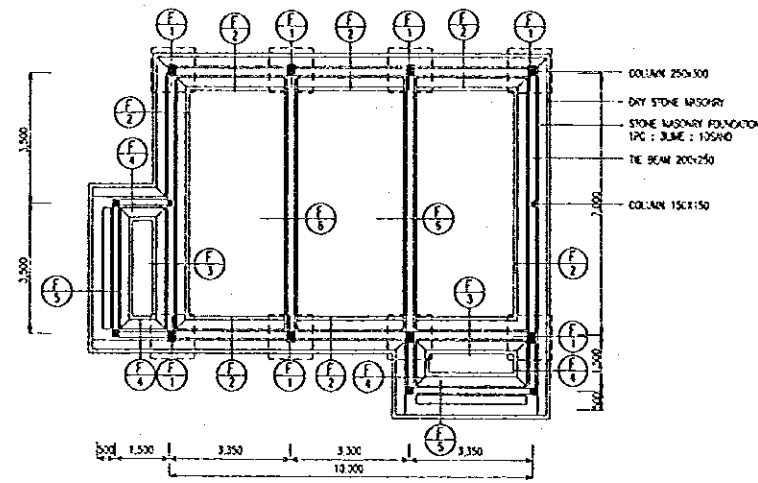
NO.	DATE	REVISIONS	ORGANIZED	DESIGNED	APPROVED

THE REPUBLIC OF INDONESIA
 MINISTRY OF PUBLIC WORKS
 DIRECTORATE GENERAL OF WATER RESOURCES DEVELOPMENT AND DIRECTORATE GENERAL OF HUMAN SETTLEMENT

BRATUNSELUNA FLOOD CONTROL PROJECT
 COMPONENT : WEST FLOODWAY / GARANG RIVER IMPROVEMENT
SIMONGAN WEIR MANAGEMENT COMPLEX
STORAGE HOUSE I
KEY PLAN, DOOR WINDOW SCHEDULE

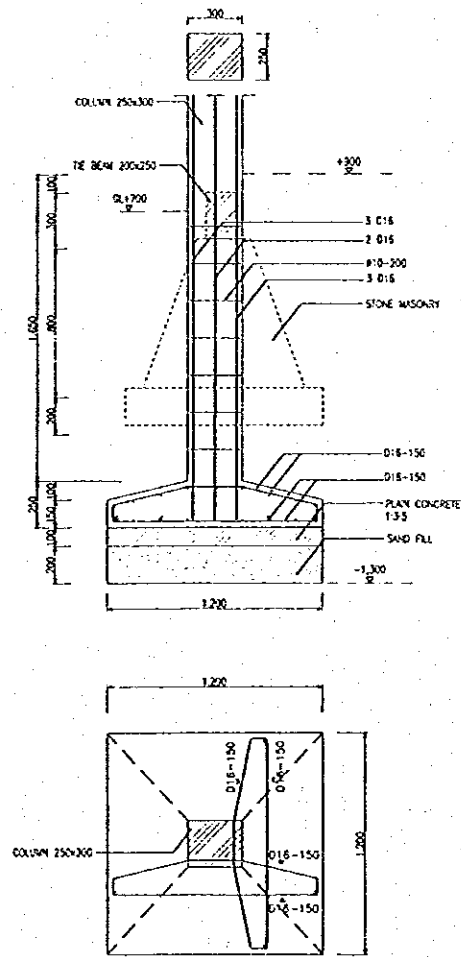
PROVINCE: CENTRAL JAWA
 PROJECT NAME: FLOOD CONTROL, URBAN DRAINAGE AND WATER RESOURCES DEVELOPMENT IN SEMARANG IN THE REP. OF INDONESIA
 DISTRICT: SEMARANG CITY
 DRAWING NO. AA-202-10-P2-SM-BI-24
 SHEET NO. 192
 DATE: _____
 CONTRACT NO. _____

DESIGNED: _____
 CHECKED: _____
 APPROVED: _____
 CHIEF OF PLANNING AND DESIGN
 PROJECT MANAGER

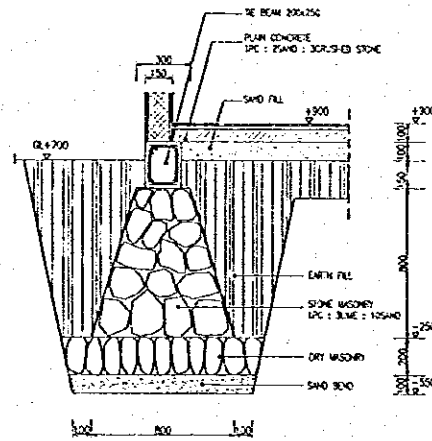


FOUNDATION PLAN
SCALE A

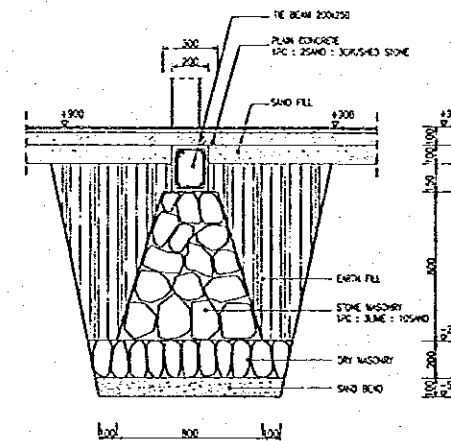
DETAIL F1



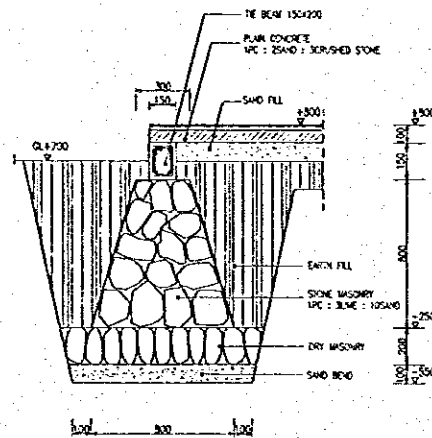
DETAIL F2



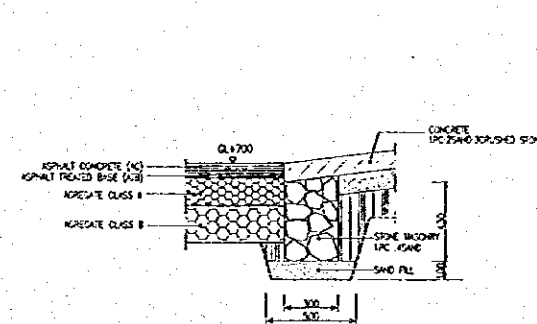
DETAIL F3



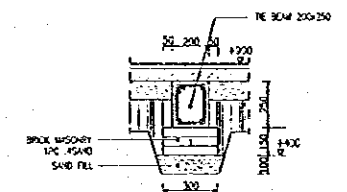
DETAIL F4



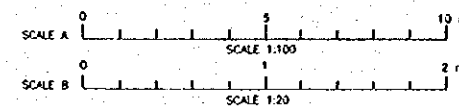
DETAIL F5



DETAIL F6

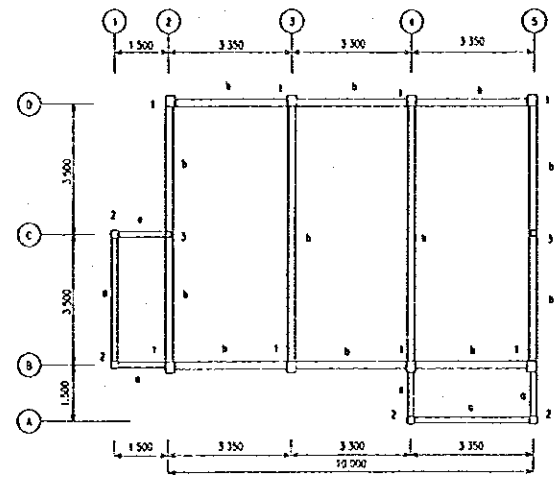


FOUNDATION SCHEDULE
SCALE B

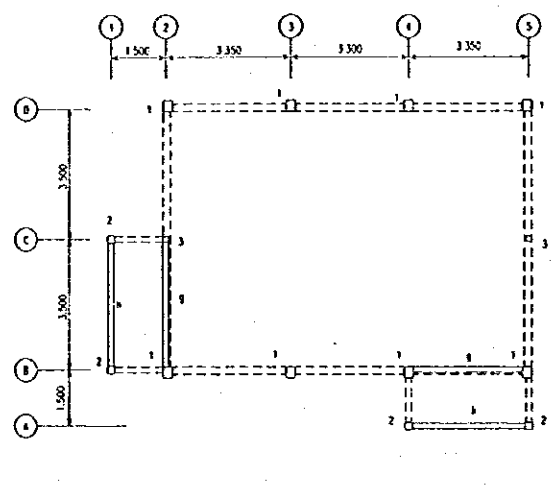


NO.	DATE	REVISIONS	ORIGINATED	DESIGNED	APPROVED

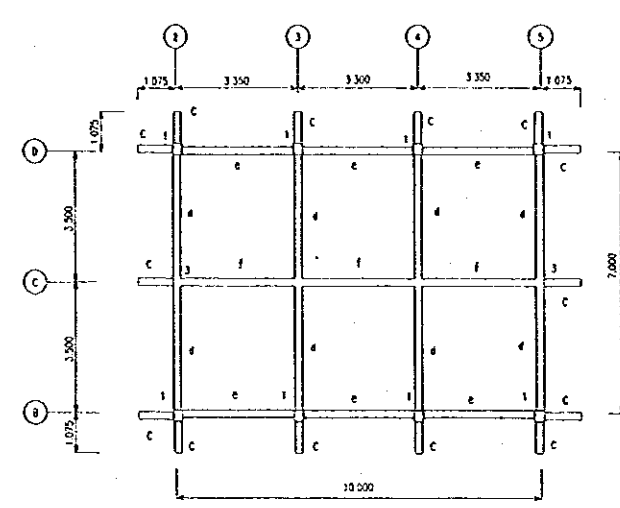
THE REPUBLIC OF INDONESIA MINISTRY OF PUBLIC WORKS DIRECTORATE GENERAL OF WATER RESOURCES DEVELOPMENT AND DIRECTORATE GENERAL OF HUMAN SETTLEMENT		PROVINCE CENTRAL JAVA
JATUNSELUNTA FLOOD CONTROL PROJECT COMPONENT : WEST FLOODWAY/GARANG RIVER IMPROVEMENT SIMONGAN WEIR MANAGEMENT COMPLEX STORAGE HOUSE I FOUNDATION PLAN & DETAIL		PROJECT NAME FLOOD CONTROL, WEIR, DRAINAGE AND WATER RESOURCES DEVELOPMENT IN SEMARANG IN THE REPUBLIC OF INDONESIA
JAPAN INTERNATIONAL COOPERATION AGENCY JICA ENGINEERING CO. LTD. IN ASSOCIATION WITH PACIFIC CONSULTANTS INTERNATIONAL AND PACIFIC INTERNATIONAL, INC.		DISTRICT SEMARANG CITY
DESIGNED CHECKED CRUIER OF PLANNING AND DESIGN PROJECT MANAGER		DRAWING NO. CA-200/WG-P2-SM-B1-2 SHEET NO. 193 DATE CONTRACT NO.



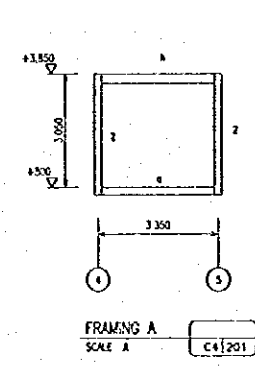
COLUMN AND BEAM PLAN + 800
SCALE A C4/201



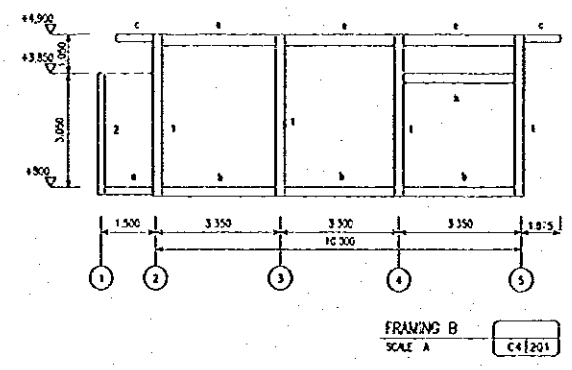
COLUMN AND BEAM PLAN + 3,850
SCALE A C4/201



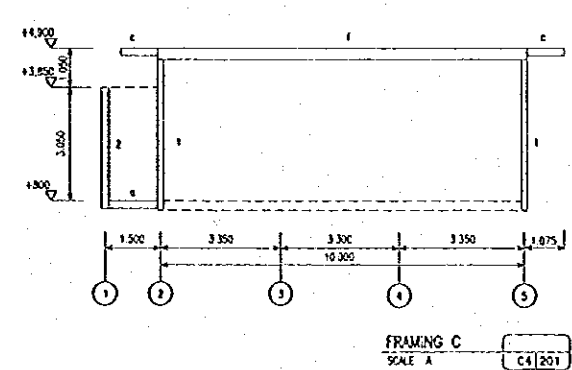
COLUMN AND BEAM PLAN + 4,900
SCALE A C4/201



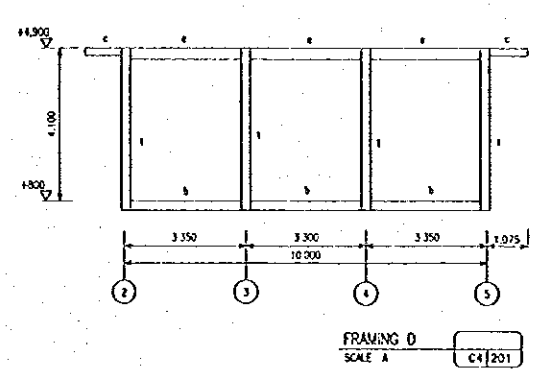
FRAMING A
SCALE A C4/201



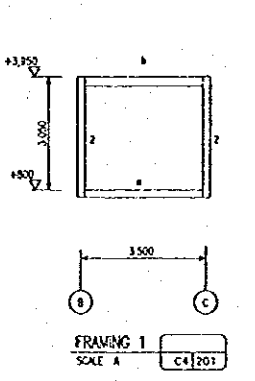
FRAMING B
SCALE A C4/201



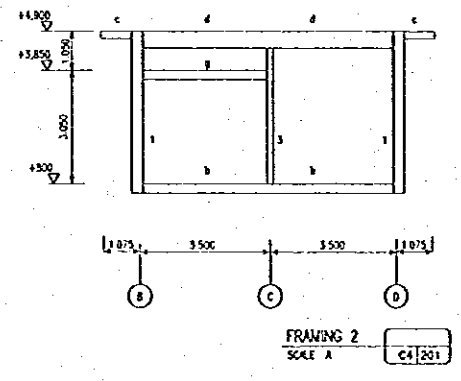
FRAMING C
SCALE A C4/201



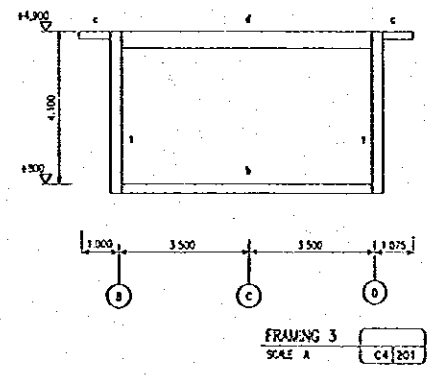
FRAMING D
SCALE A C4/201



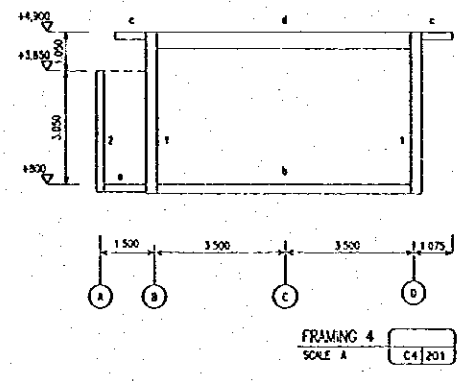
FRAMING 1
SCALE A C4/201



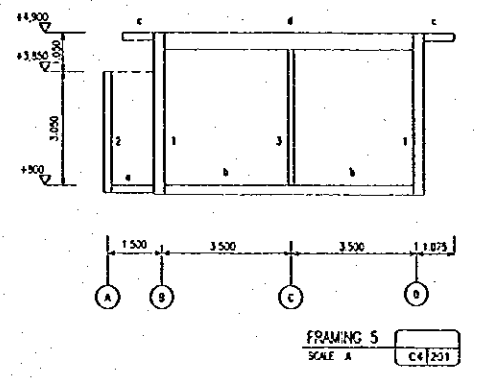
FRAMING 2
SCALE A C4/201



FRAMING 3
SCALE A C4/201



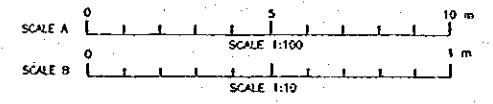
FRAMING 4
SCALE A C4/201



FRAMING 5
SCALE A C4/201

ARRANGEMENT	TYPICAL SECTION OF BEAM AND THE BEAM REINFORCEMENT									
	BEAM TYPE a	BEAM TYPE b	BEAM TYPE c	BEAM TYPE d		BEAM TYPE e		BEAM TYPE f	BEAM TYPE g	BEAM TYPE h
TOP	2 #12	2 #16	3 #12	4 #15	5 #16	3 #15	5 #16	2 #16	2 #12	2 #16
MIDDLE	-	-	-	2 #12	2 #12	-	-	-	-	-
BOTTOM	2 #12	2 #16	2 #12	6 #16	4 #16	5 #16	3 #15	3 #16	2 #12	3 #16
STIRRUP	#8 - 150	#8 - 150	#8 - 150	#8 - 150	#8 - 150	#8 - 150	#8 - 150	#8 - 150	#8 - 150	#8 - 150

ARRANGEMENT	TYPICAL SECTION OF COLUMN REINFORCEMENT		
	COLUMN TYPE 1	COLUMN TYPE 2	COLUMN TYPE 3
TOP	6 #15	4 #16	3 #16
STIRRUP	#8 - 150	#8 - 150	#8 - 150



SECTION OF COLUMN, BEAM AND THE BEAM REINFORCEMENT
SCALE B C4/201

NO.	DATE	REVISIONS	ORIGINATED	DESIGNED	APPROVED

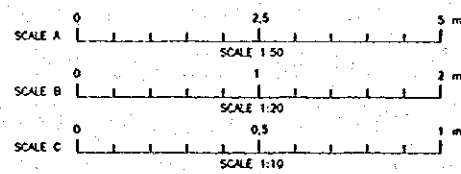
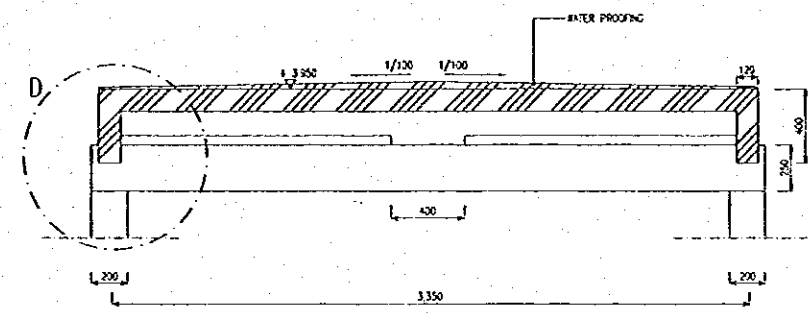
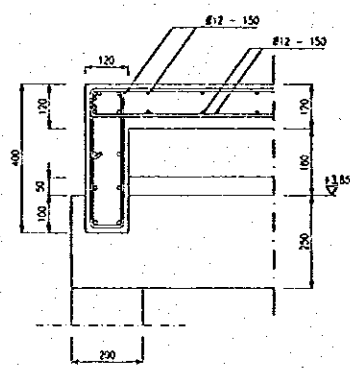
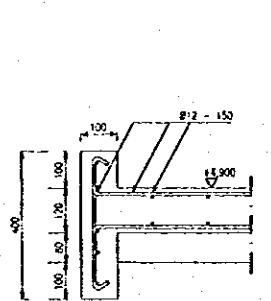
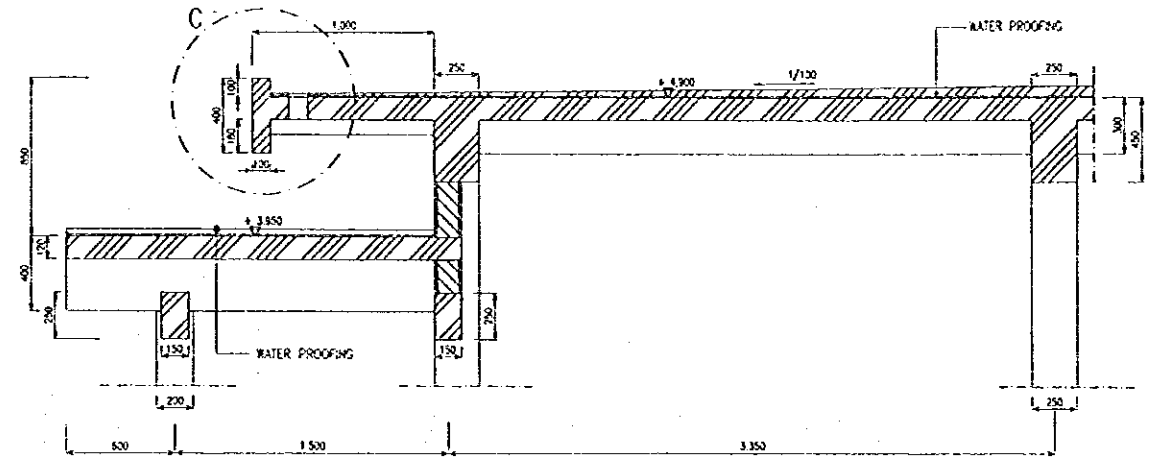
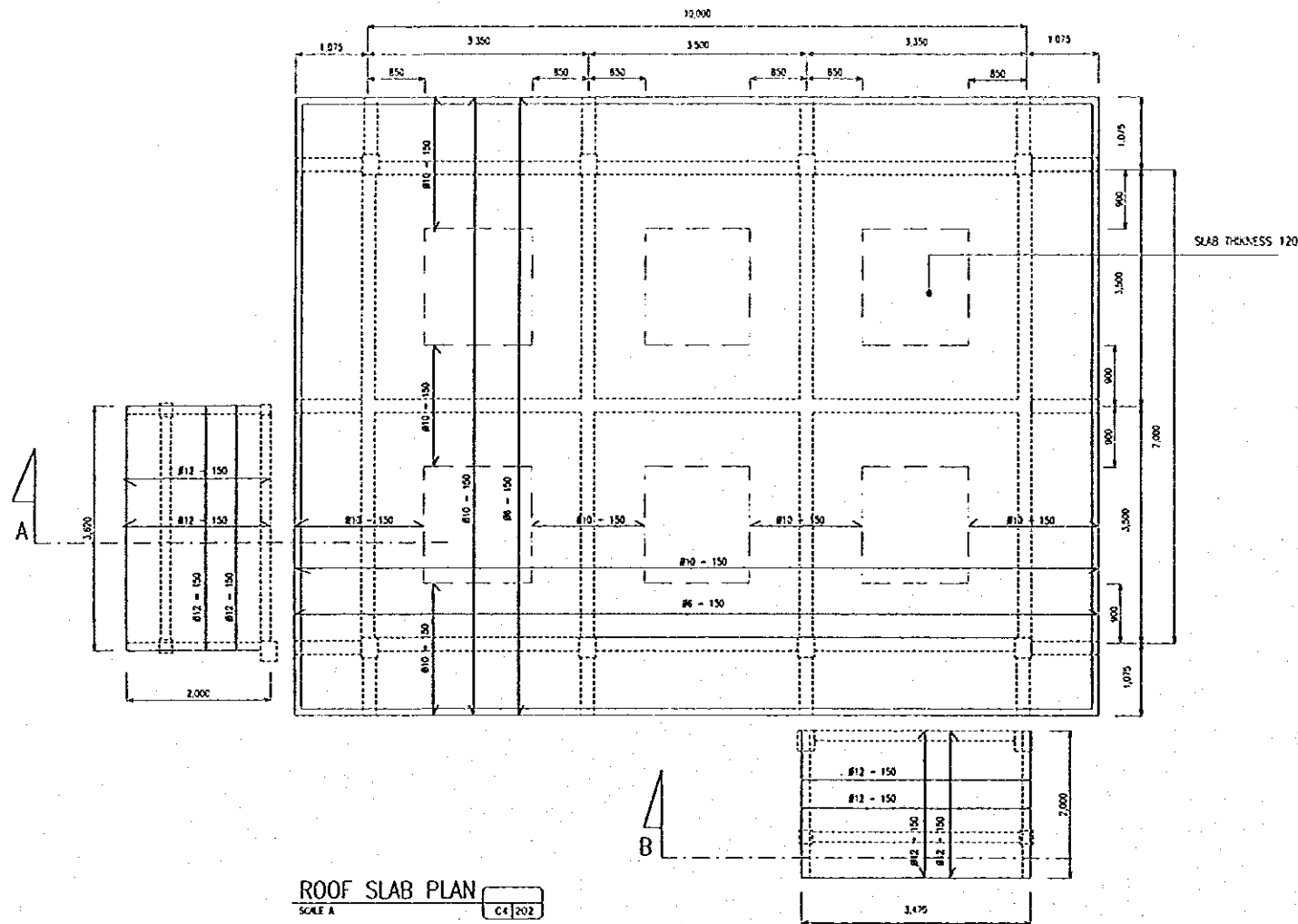
THE REPUBLIC OF INDONESIA
 MINISTRY OF PUBLIC WORKS
 DIRECTORATE GENERAL OF WATER RESOURCES DEVELOPMENT
 AND DIRECTORATE GENERAL OF HUMAN SETTLEMENT

IRATUNSELUNA FLOOD CONTROL PROJECT
 COMPONENT : WEST FLOODWAY/GARANG RIVER IMPROVEMENT
SIMONGAN WEIR MANAGEMENT COMPLEX
STORAGE HOUSE. I
COLUMN, TIE BEAM & FRAMING ELEVATION

JAWA INTERNATIONAL COOPERATION AGENCY
 CIT ENGINEERING CO. LTD. IN ASSOCIATION WITH
 PACIFIC CONSULTANTS INTERNATIONAL AND
 PASCO INTERNATIONAL INC.

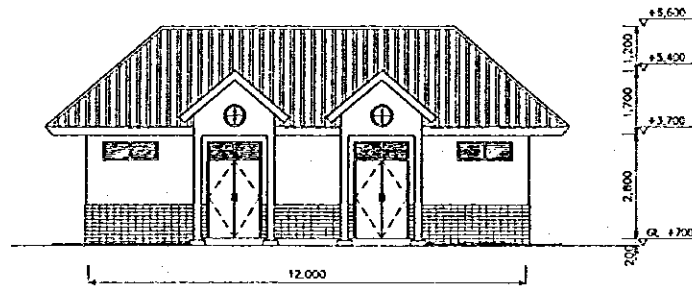
DESIGNED: [Signature]
 CHECKED: [Signature]
 CIGIEP OF PLANNING AND DESIGN
 PROJECT MANAGER

PROVINCE: CENTRAL JAVA
 DISTRICT: SENARANG CITY
 SHEET NO. 194
 DATE: [] CONTRACT NO.: []

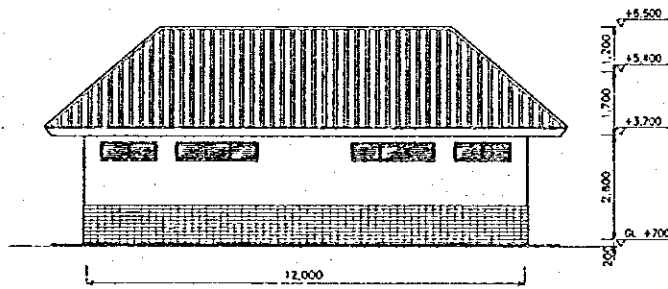


NO	DATE	REVISIONS	ORIGINATED	DESIGNED	APPROVED	APPROVED

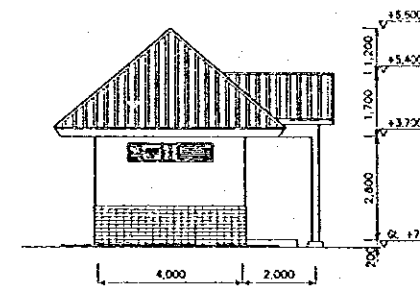
<p>THE REPUBLIC OF INDONESIA MINISTRY OF PUBLIC WORKS DIRECTORATE GENERAL OF WATER RESOURCES DEVELOPMENT AND DIRECTORATE GENERAL OF HUMAN SETTLEMENT</p>	PROVINCE CENTRAL JAVA
	PROJECT NAME FLOOD CONTROL, LEAK DRAINAGE AND WATER RESOURCES DEVELOPMENT IN SEMARANG IN THE REPUBLIC OF INDONESIA
	DISTRICT SEMARANG CITY
	DRAWING NO. C4-202/W6-P2-SM-B-27 SHEET NO. 195
	DATE CONTRACT NO.
JATUNSELUNA FLOOD CONTROL PROJECT COMPONENT : WEST FLOODWAY/CARANG RIVER IMPROVEMENT SIMONGAN WEIR MANAGEMENT COMPLEX STORAGE HOUSE I CONCRETE SLAB PLAN & DETAIL	DESIGNED CHECKED CHIEF OF PLANNING AND DESIGN PROJECT MANAGER



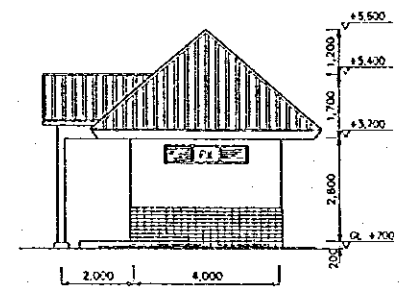
EAST ELEVATION
SCALE A A4(300)



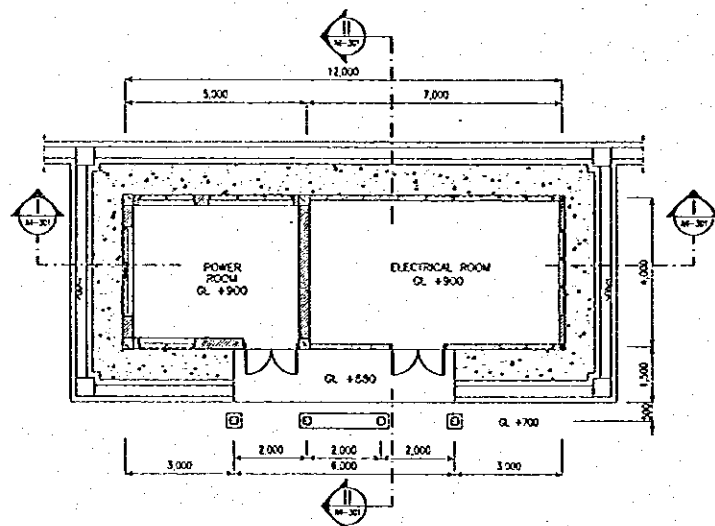
WEST ELEVATION
SCALE A A4(300)



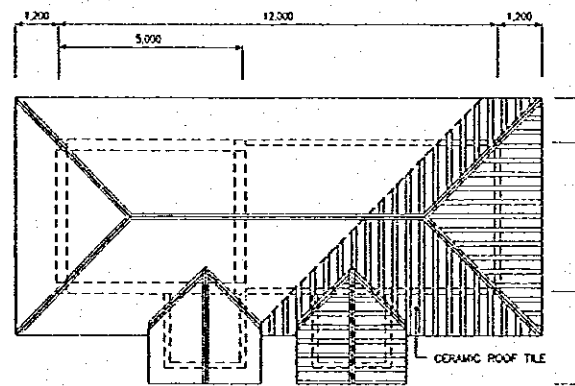
SOUTH ELEVATION
SCALE A A4(300)



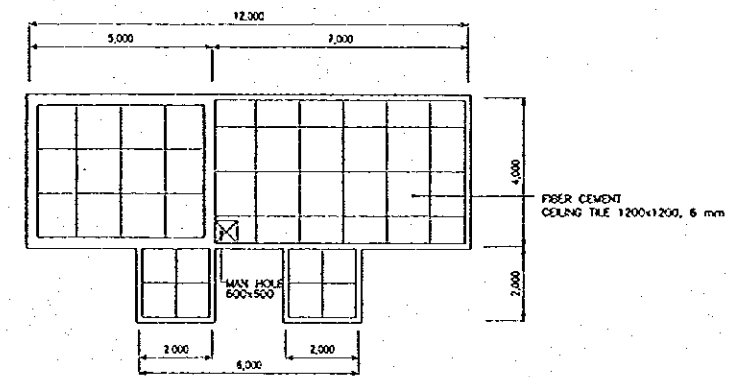
NORTH ELEVATION
SCALE A A4(300)



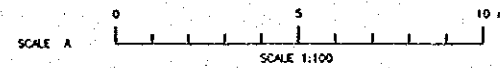
FLOOR PLAN
SCALE A A4(300)



ROOF PLAN
SCALE A A4(300)

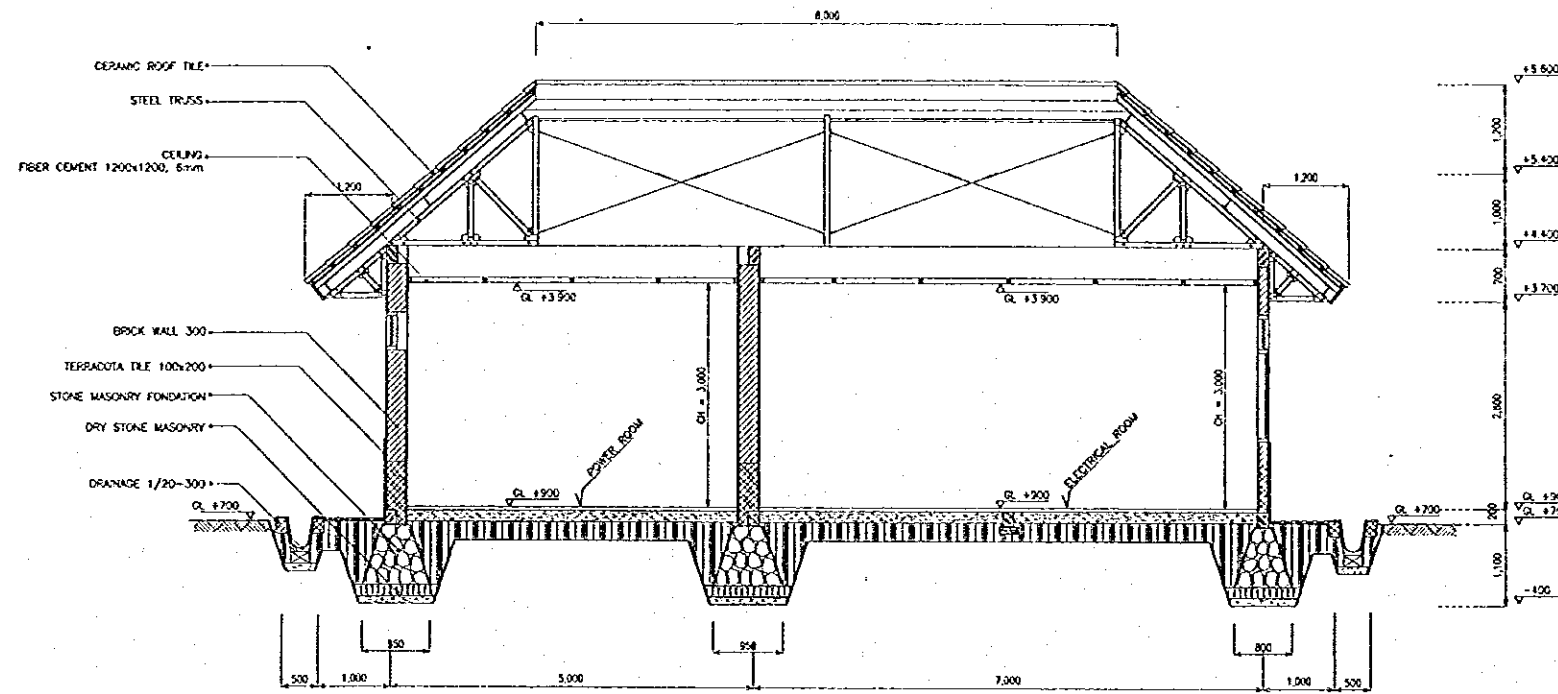


REFLECTED CEILING PLAN
SCALE A A4(300)

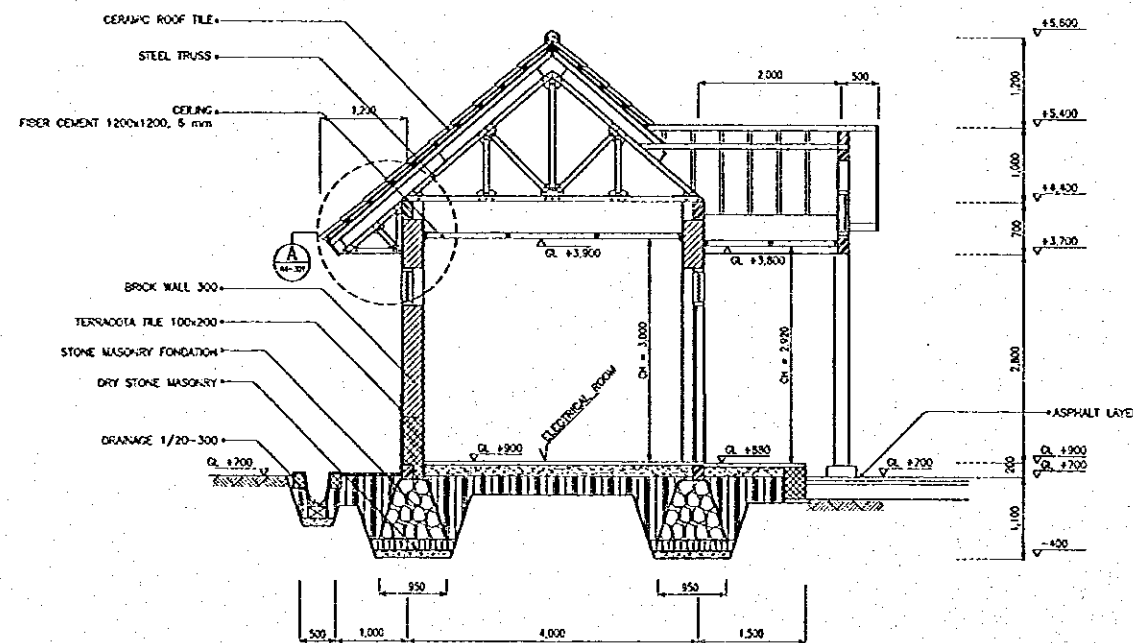


NO.	DATE	REVISIONS	ORIGINATED	DESIGNED	APPROVED

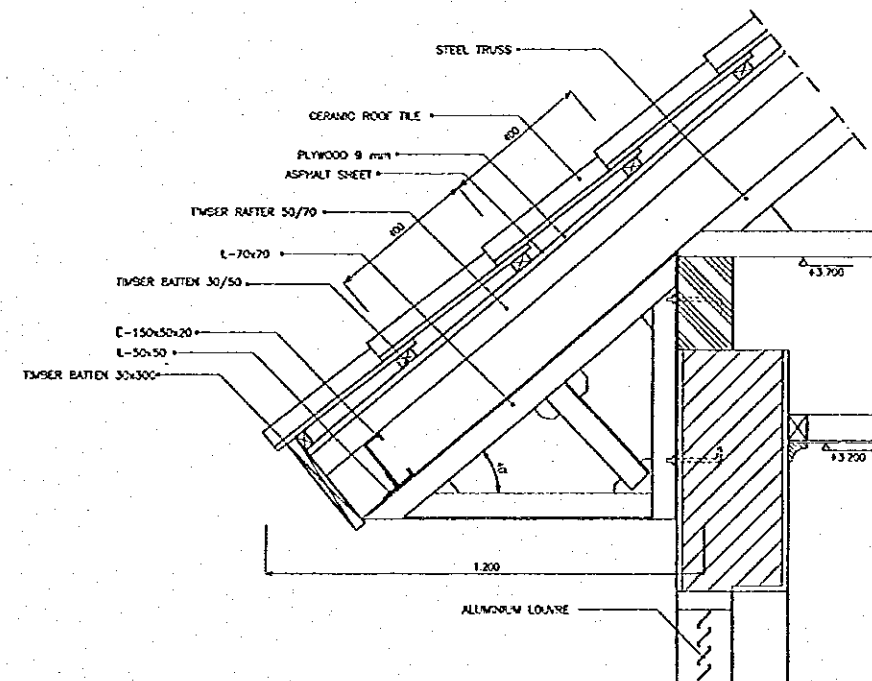
THE REPUBLIC OF INDONESIA MINISTRY OF PUBLIC WORKS DIRECTORATE GENERAL OF WATER RESOURCES DEVELOPMENT AND DIRECTORATE GENERAL OF HUMAN SETTLEMENT		PROVINCE CENTRAL JAWA
IRATUNSELINA FLOOD CONTROL PROJECT COMPONENT : WEST FLOODWAY / GARANG RIVER IMPROVEMENT SIMONGAN WEIR MANAGEMENT COMPLEX ELECTRICAL BUILDING FLOOR PLAN, ROOF PLAN, CEILING PLAN, AND ELEVATION		PROJECT NAME FLOOD CONTROL, URBAN DRAINAGE AND WATER RESOURCES DEVELOPMENT IN SEMARANG IN THE REPUBLIC OF INDONESIA
LAFAN INTERNATIONAL COOPERATION AGENCY (LAFAN ENGINEERING CONSULTING AND ARCHITECTURE) PTE. PACIFIC COMMERCE INTERNATIONAL PTE. (ARCHITECTURE) PTE.		DISTRICT SEMARANG CITY
DESIGNED: <i>[Signature]</i> CHECKED: <i>[Signature]</i>		DRAWING NO. AA-300/SG-P2-SM-B-28 SHEET NO. 195
APPROVED: <i>[Signature]</i> CHIEF OF PLANNING AND DESIGN PROJECT MANAGER		DATE CONTRACT NO.



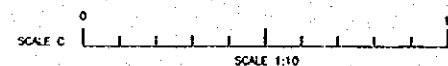
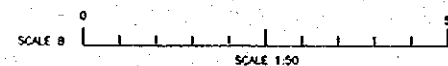
SECTION I-I
SCALE B



SECTION II-II
SCALE B



DETAIL A
SCALE C



NO.	DATE	REVISIONS	ORIGINATED	DESIGNED	APPROVED

THE REPUBLIC OF INDONESIA MINISTRY OF PUBLIC WORKS DIRECTORATE GENERAL OF WATER RESOURCES DEVELOPMENT AND DIRECTORATE GENERAL OF HUMAN SETTLEMENT		PROVINCE CENTRAL JAWA
BRATUNSELINA FLOOD CONTROL PROJECT COMPONENT: WEST FLOODWAY / GARANG RIVER IMPROVEMENT SIMONGAN WEIR MANAGEMENT COMPLEX ELECTRICAL BUILDING SECTION & DETAIL		PROJECT NAME FLOOD CONTROL, URBAN DRAINAGE AND WATER RESOURCES DEVELOPMENT IN SEMARANG IN THE REPUBLIC OF INDONESIA
DESIGNED CHECKED		DISTRICT SEMARANG CITY
DATE		DRAWING NO. 44-301/MD-P2-SM-BI-25
APPROVED CHIEF OF PLANNING AND DESIGN PROJECT MANAGER		SHEET NO. 157
CONTRACT NO.		DATE