

TABLE D.5.1 INCREASE OF MAXIMUM WATER LEVEL BY VARIOUS ROTATIONAL INUNDATION SYSTEM

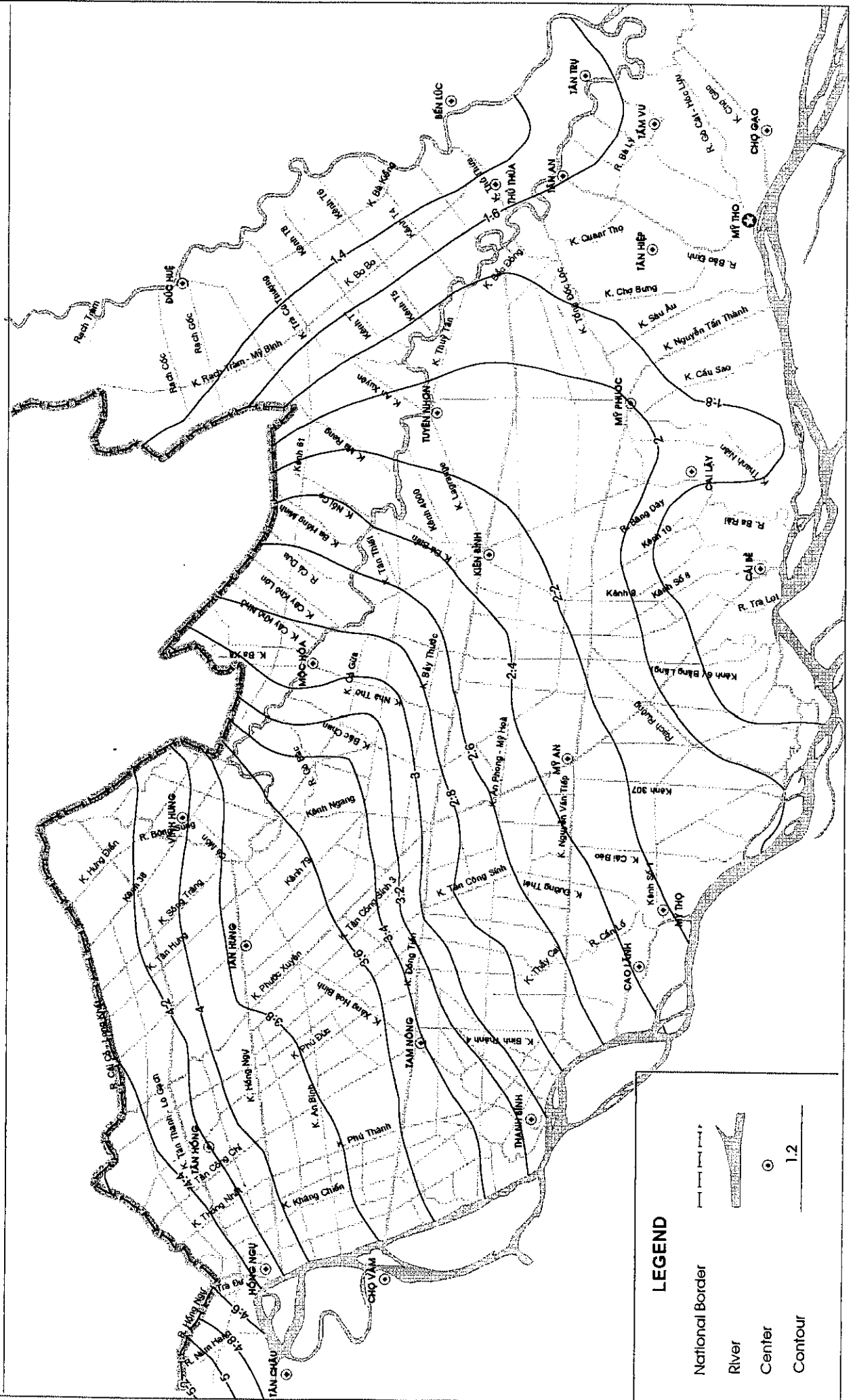
Location	Case-1		Case-2		Case-3		Case-4	
	Present condition Maximum Water Level	Without rotational inundation Maximum Water Level	Increase from Case-1	With rotational inundation system of 2/3 non-inundation		With rotational inundation system of 1/3 non-inundation		
				Maximum Water Level	Increase from Case-1	Maximum Water Level	Increase from Case-1	
INSIDE PROJECT AREA								
Tan Hong	4.46	4.72	0.26	4.66	0.20	4.56	0.10	
Hong Ngu canal	4.11	4.29	0.18	4.25	0.14	4.19	0.08	
Tram Chim	3.64	3.60	-0.04	3.63	-0.01	3.64	0.00	
Hung Thanh	2.92	2.76	-0.16	2.77	-0.15	2.83	-0.09	
Nguyen Van Tiep canal	2.49	2.39	-0.10	2.37	-0.12	2.43	-0.06	
My An	2.30	2.40	0.10	2.34	0.04	2.31	0.01	
My Trung	2.06	2.05	-0.01	2.00	-0.06	2.02	-0.04	
Cai Be	1.69	1.80	0.11	1.71	0.02	1.69	0.00	
Cai Lay	1.78	1.66	-0.12	1.69	-0.09	1.73	-0.05	
OUTSIDE PROJECT AREA								
Vinh Hung	4.02	4.10	0.08	4.06	0.04	4.04	0.02	
Tan Hung	3.76	3.79	0.03	3.78	0.02	3.78	0.02	
Moc Hoa	2.62	2.57	-0.05	2.58	-0.04	2.60	-0.02	
Kien Binh	2.19	2.08	-0.11	2.11	-0.08	2.15	-0.04	
Tuyen Nhon	2.08	1.98	-0.10	2.00	-0.08	2.04	-0.04	
My Phuoc	2.10	1.97	-0.13	2.00	-0.10	2.06	-0.04	
ALONG TIEN RIVER								
Tan Chau	4.55	4.66	0.11	4.63	0.08	4.59	0.04	
Hong Ngu	4.20	4.34	0.14	4.31	0.11	4.25	0.05	
Cho Moi	2.98	3.01	0.03	3.00	0.02	2.99	0.01	
Cao Lanh	2.16	2.17	0.01	2.16	0.00	2.16	0.00	
My Thuan	1.77	1.79	0.02	1.78	0.01	1.77	0.00	
My Tho	1.76	1.76	0.00	1.76	0.00	1.76	0.00	

TABLE D.5.2 INCREASE OF WATER LEVEL AT TIME-WIDE ROTATIONAL INUNDATION SYSTEM FOR SHALLOW INUNDATION AREA

Location	At 10 th September			At 20 th September			At 30 th September		
	Case-1	Case-4	Case-1	Case-1	Case-5	Case-1	Case-1	Case-6	
	Present condition	Without rotational inundation	Present condition	With rotational inundation system of 2/3 non-	Present condition	With rotational inundation system of 1/3 non-	Present condition	With rotational inundation system of 1/3 non-	
	Water Level	Maximum Water Level	Increase from Case-1	Maximum Water Level	Increase from Case-1	Maximum Water Level	Increase from Case-1	Maximum Water Level	Increase from Case-1
INSIDE PROJECT AREA									
Tan Hong	4.04	4.15	0.11	4.38	4.47	0.09	4.44	4.53	0.09
Hong Ngu canal	3.78	3.89	0.11	4.03	4.13	0.10	4.07	4.16	0.09
Tram Chim	3.24	3.25	0.01	3.53	3.53	0.00	3.60	3.60	0.00
Hung Thanh	2.38	2.30	-0.08	2.74	2.65	-0.09	2.87	2.81	-0.06
Nguyen Van Tiep canal	1.97	1.93	-0.04	2.27	2.24	-0.03	2.40	2.43	0.03
My An	1.73	1.74	0.01	2.04	2.12	0.08	2.21	2.42	0.21
My Trung	1.46	1.48	0.02	1.68	1.70	0.02	1.87	1.92	0.05
Cai Be	1.30	1.32	0.02	1.33	1.35	0.02	1.26	1.30	0.04
Cai Lay	1.20	1.18	-0.02	1.28	1.23	-0.05	1.54	1.44	-0.10
OUTSIDE PROJECT AREA									
Vinh Hung	3.43	3.40	-0.03	3.86	3.86	0.00	3.97	3.99	0.02
Tan Hung	3.31	3.29	-0.02	3.64	3.65	0.01	3.72	3.74	0.02
Moc Hoa	1.78	1.74	-0.04	2.21	2.16	-0.05	2.48	2.45	-0.03
Kien Binh	1.52	1.46	-0.06	1.83	1.75	-0.08	2.08	2.00	-0.08
Tuyen Nhon	1.21	1.18	-0.03	1.55	1.48	-0.07	1.87	1.79	-0.08
My Phuoc	1.39	1.33	-0.06	1.68	1.56	-0.12	1.98	1.86	-0.12
ALONG TIEN RIVER									
Tan Chau	4.33	4.38	0.05	4.51	4.55	0.04	4.52	4.57	0.05
Hong Ngu	3.94	4.00	0.06	4.14	4.20	0.06	4.16	4.21	0.05
Cho Moi	2.64	2.66	0.02	2.81	2.83	0.02	2.81	2.83	0.02
Cao Lanh	1.81	1.82	0.01	1.90	1.90	0.00	1.85	1.85	0.00
My Thuan	1.42	1.42	0.00	1.42	1.43	0.01	1.29	1.30	0.01
My Tho	1.35	1.35	0.00	1.33	1.33	0.00	1.17	1.17	0.00

Remarks : One third rotational inundation control system was applied for the deep and middle inundation areas besides the "time-wide" rotational system was applied for the shallow inundation areas.

FIG. D.5.1 MAXIMUM WATER LEVEL AT PRESENT CONDITION (CASE-1)



**FIG. D.5.3 INCREASE OF MAXIMUM WATER LEVEL WITH ROTATION INUNDATION SYSTEM OF TWO
THIRD (2/3) NON-INUNDATION (CASE-3)**

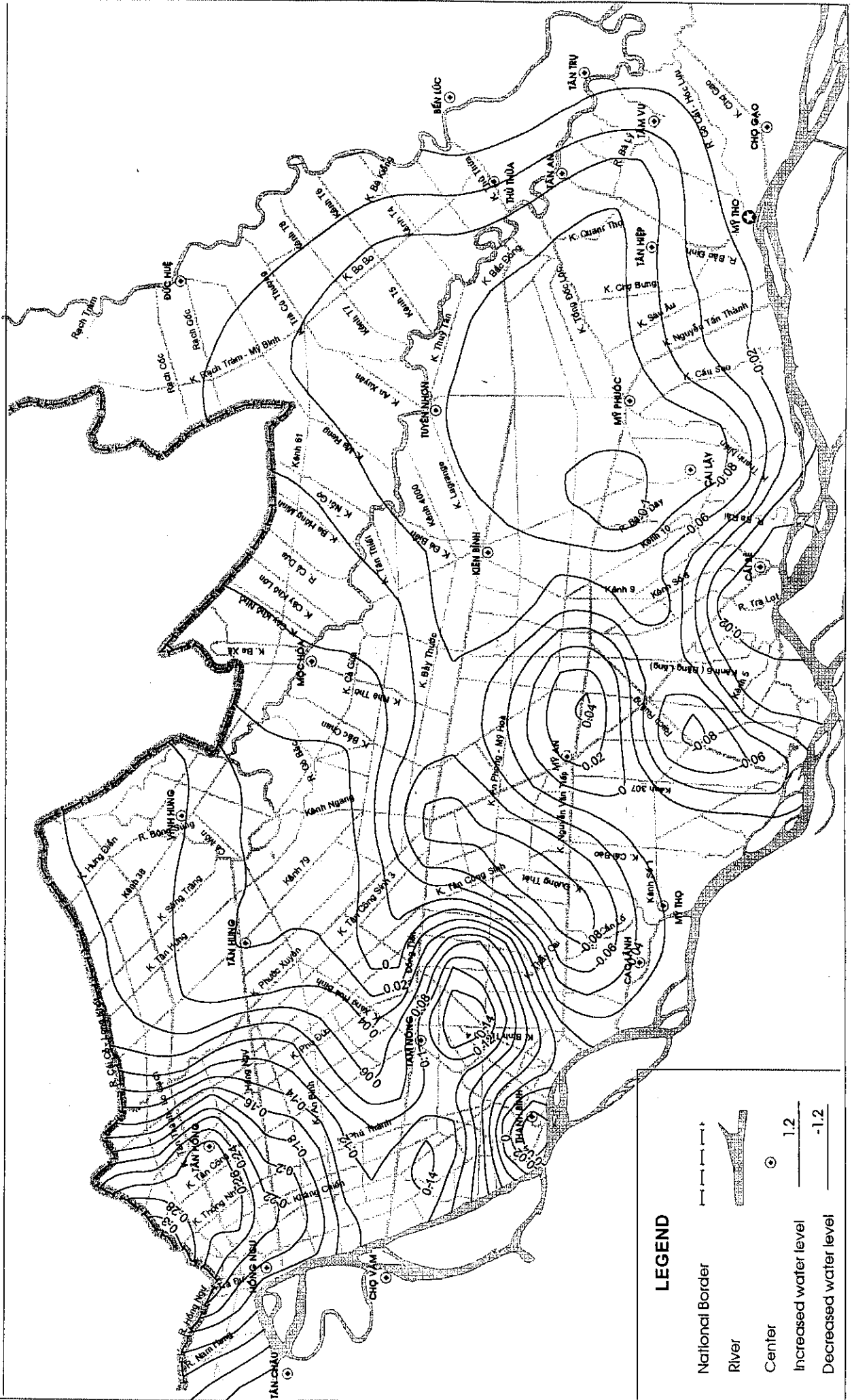


FIG. D.5.6 INCREASE OF WATER LEVEL WITH TIME-WIDE ROTATION INUNDATION SYSTEM IN SHALLOW INUNDATION AT 10, SEPTEMBER (CASE-4)

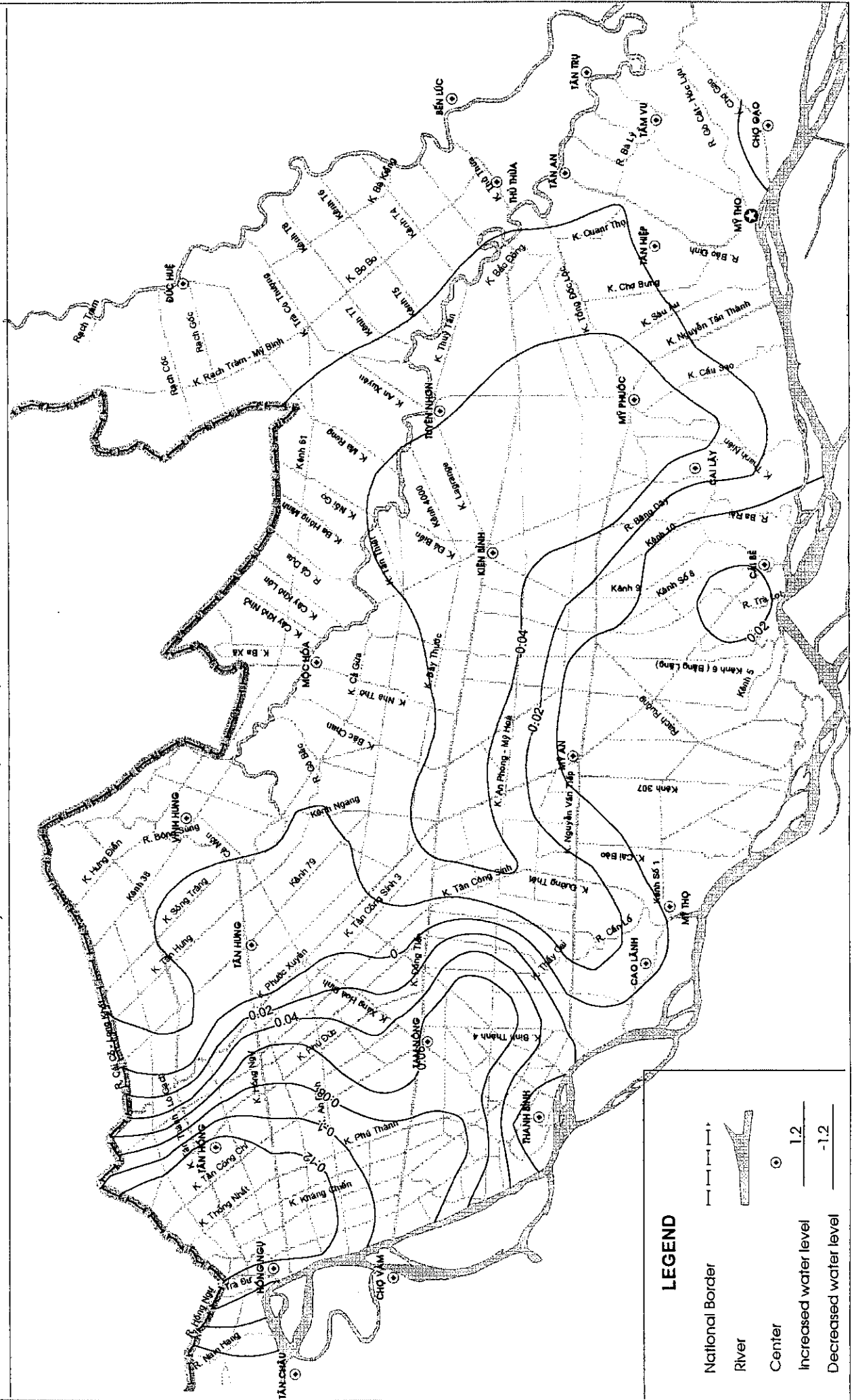


FIG. D.5.8 INCREASE OF WATER LEVEL WITH TIME-WIDE ROTATION INUNDATION SYSTEM IN SHALLOW INUNDATION AT 30, SEPTEMBER (CASE-6)

