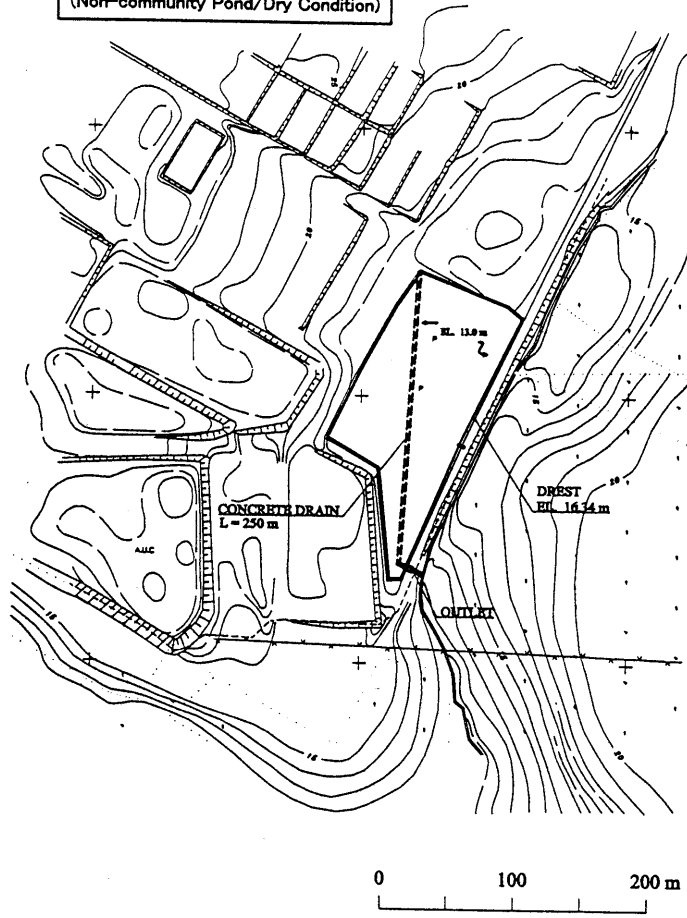


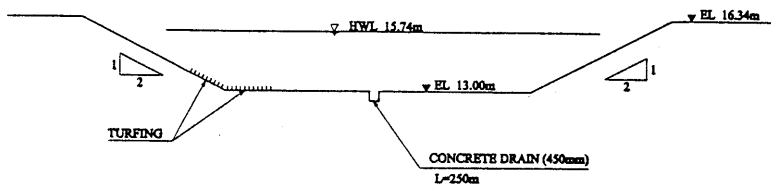
THE STUDY ON  
 INTEGRATED URBAN DRAINAGE IMPROVEMENT  
 FOR MELAKA AND SUNGAI PETANI IN MALAYSIA  
 JAPAN INTERNATIONAL COOPERATION AGENCY

Fig. VI-14  
 General Layout of Proposed Detention  
 Facilities in Line G Basin (Sg. Petani)

TG.MINYAK (1)  
(Non-community Pond/Dry Condition)



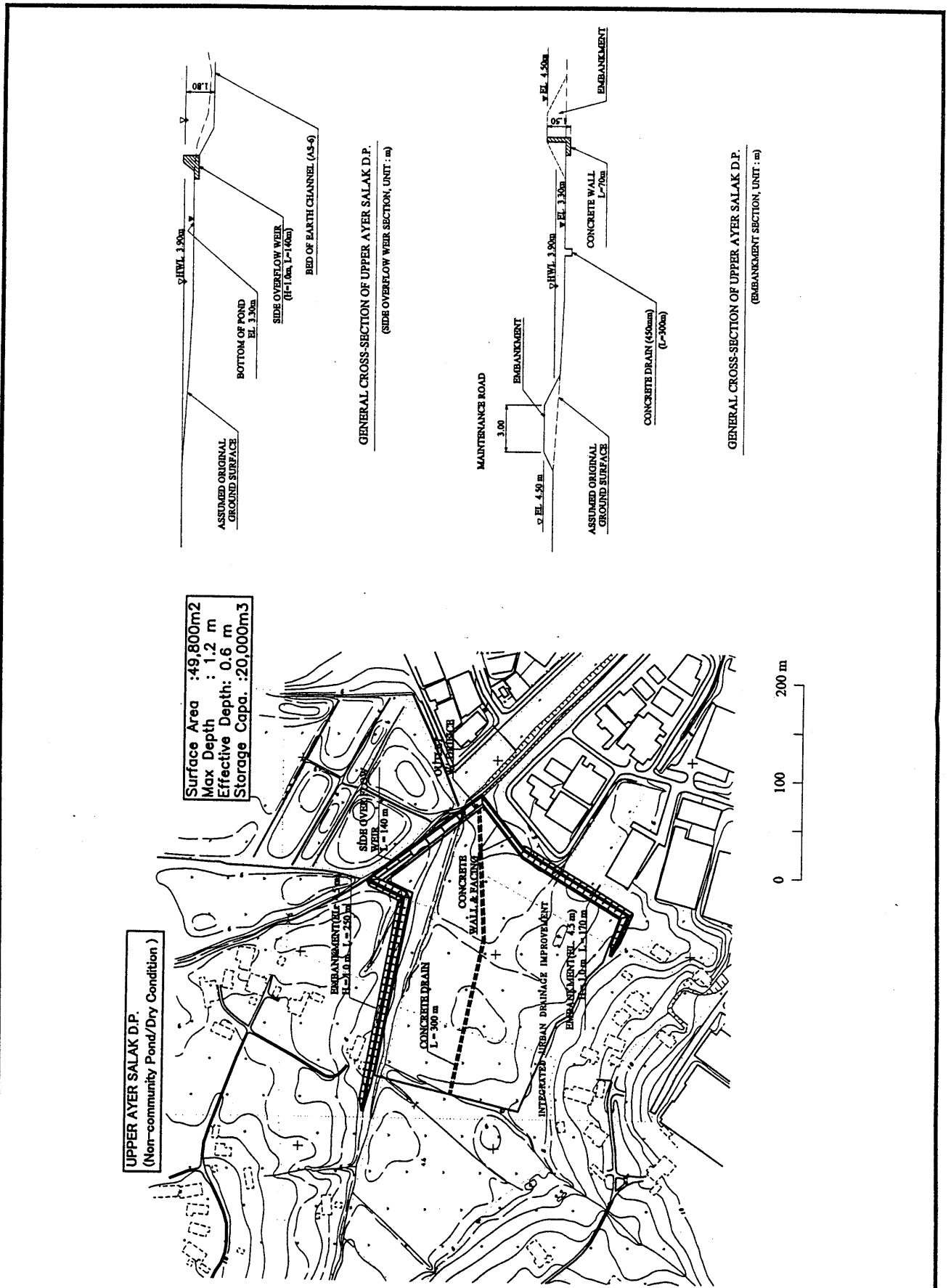
Surface Area : 24,850m<sup>2</sup>  
Max Depth : 3.34m  
Effective Depth : 2.74m  
Storage Capa. : 63,600m<sup>3</sup>



GENERAL CROSS-SECTION OF TG. MINYAK (1) D.P.  
UNIT : m

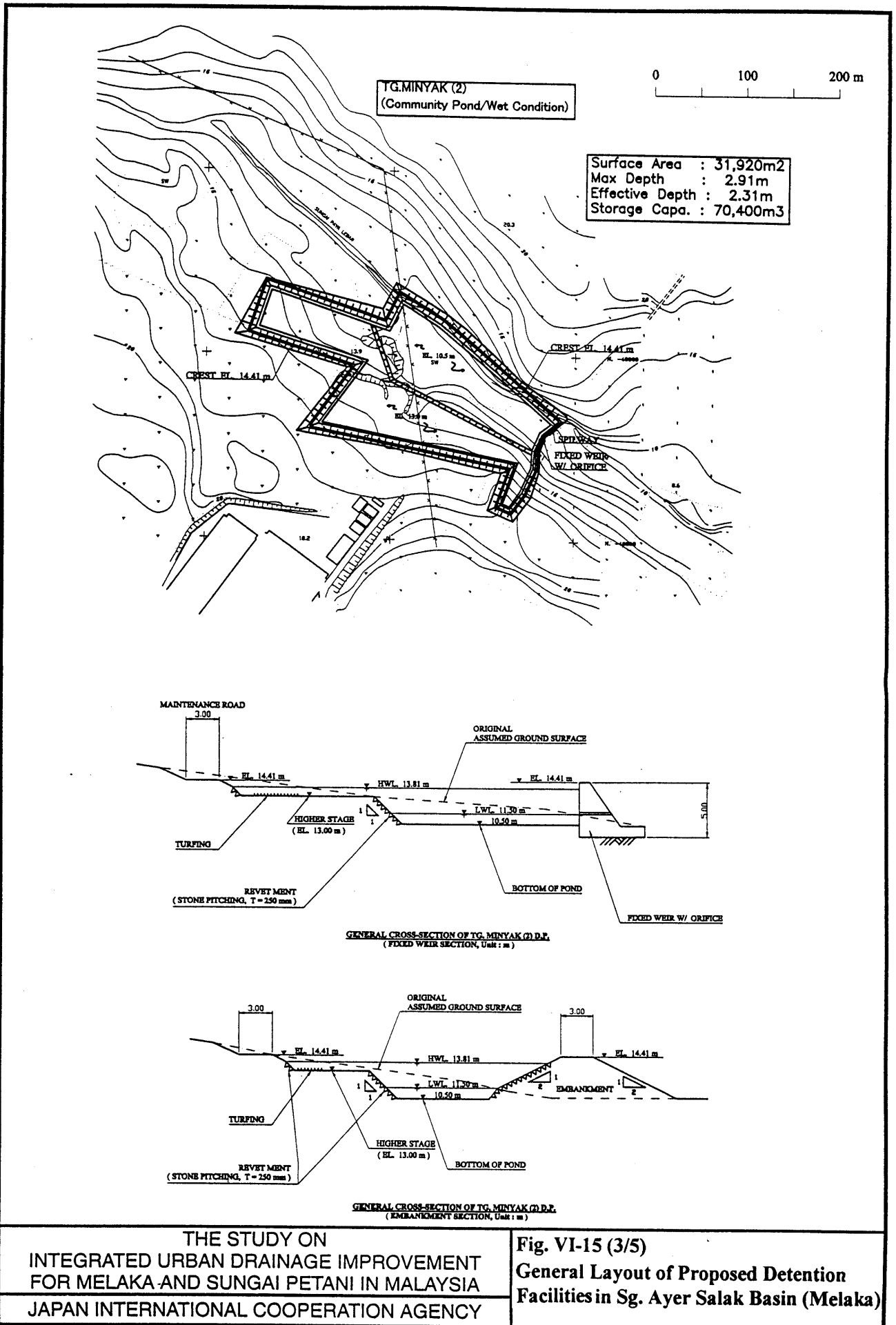
THE STUDY ON  
INTEGRATED URBAN DRAINAGE IMPROVEMENT  
FOR MELAKA AND SUNGAI PETANI IN MALAYSIA  
JAPAN INTERNATIONAL COOPERATION AGENCY

Fig. VI-15 (1/5)  
General Layout of Proposed Detention  
Facilities in Sg. Ayer Salak Basin (Melaka)



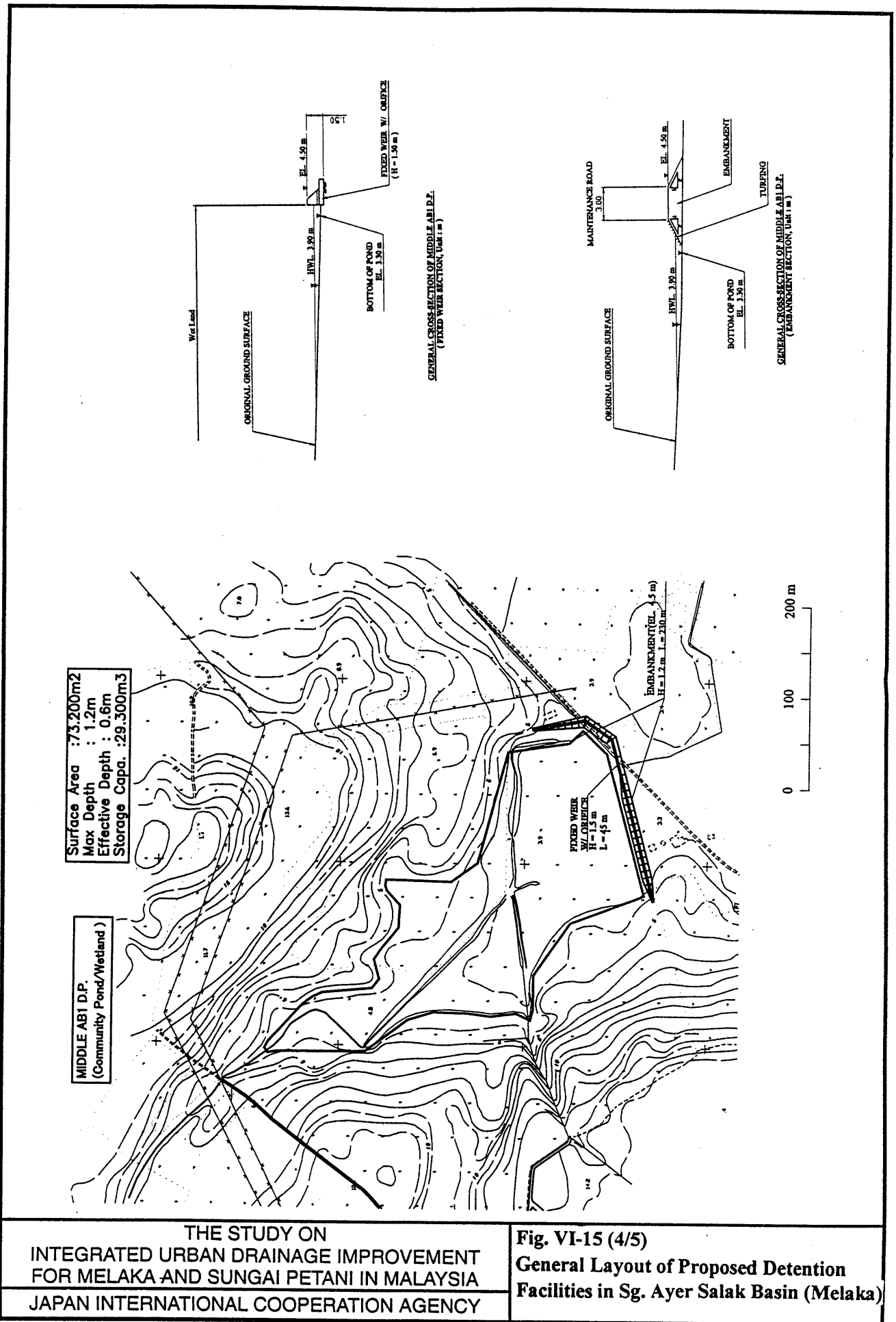
THE STUDY ON  
 INTEGRATED URBAN DRAINAGE IMPROVEMENT  
 FOR MELAKA AND SUNGAI PETANI IN MALAYSIA  
 JAPAN INTERNATIONAL COOPERATION AGENCY

Fig. VI-15 (2/5)  
 General Layout of Proposed Detention  
 Facilities in Sg. Ayer Salak Basin (Melaka)



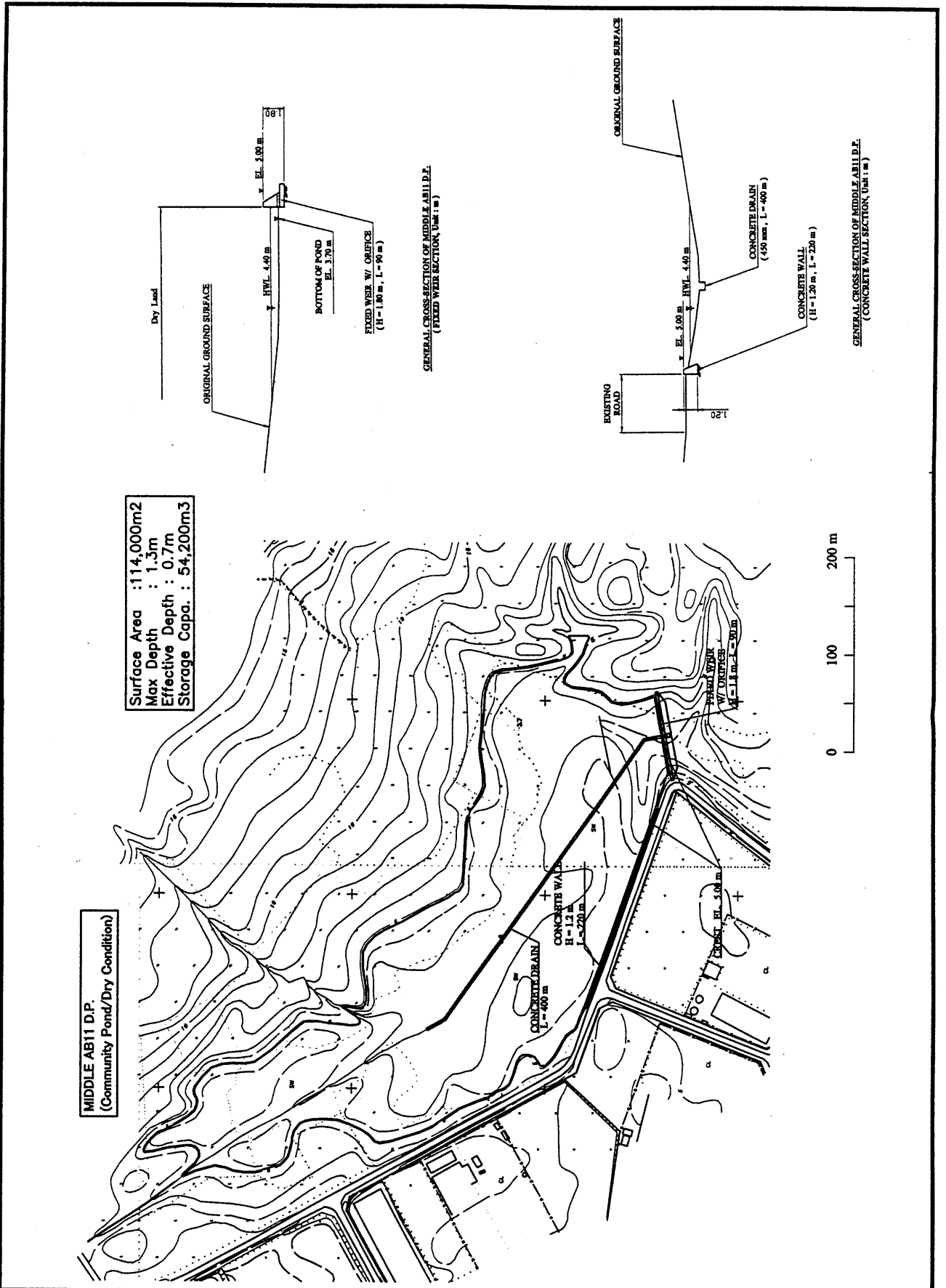
THE STUDY ON  
 INTEGRATED URBAN DRAINAGE IMPROVEMENT  
 FOR MELAKA AND SUNGAI PETANI IN MALAYSIA  
 JAPAN INTERNATIONAL COOPERATION AGENCY

Fig. VI-15 (3/5)  
 General Layout of Proposed Detention  
 Facilities in Sg. Ayer Salak Basin (Melaka)



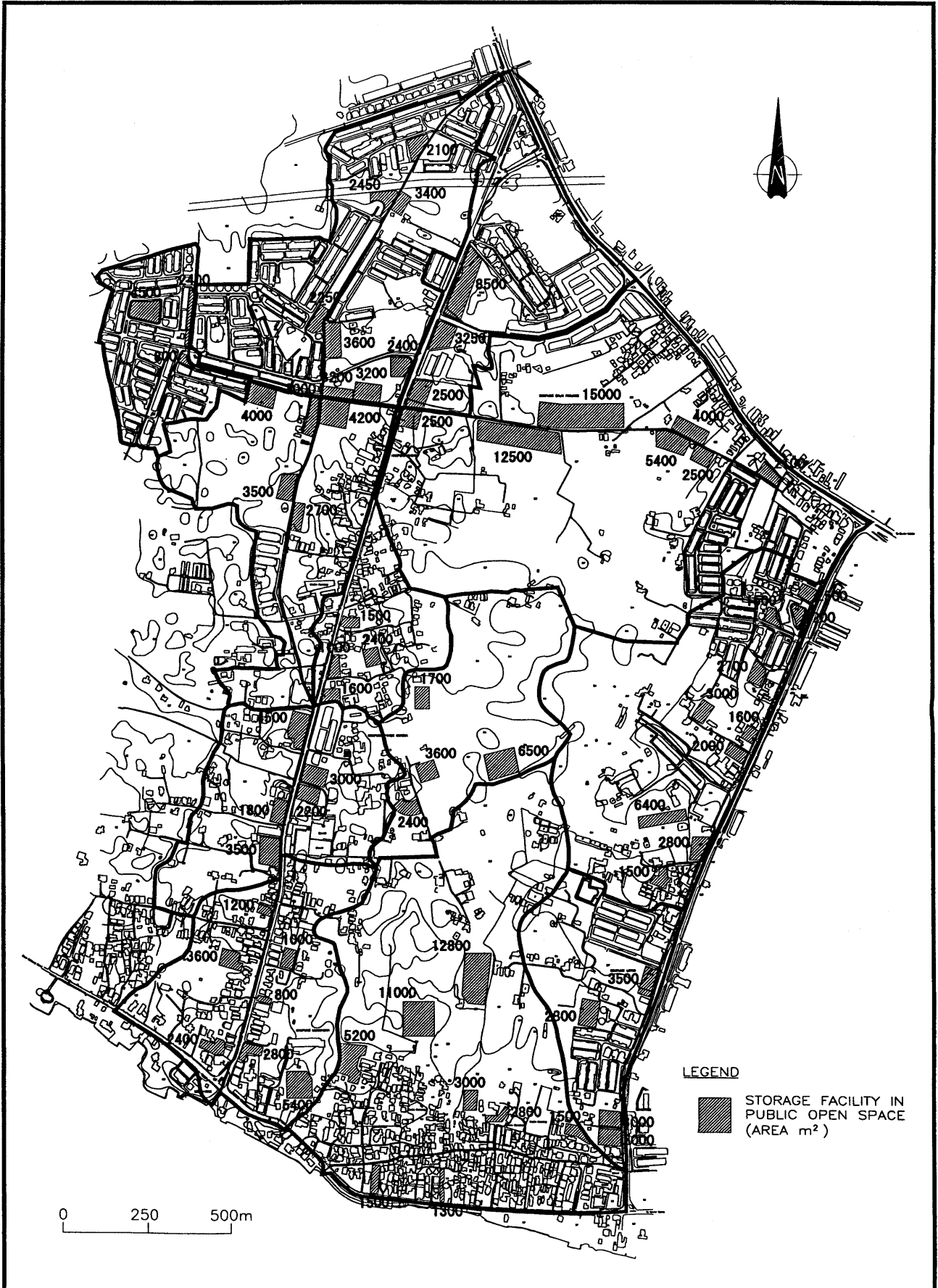
THE STUDY ON  
 INTEGRATED URBAN DRAINAGE IMPROVEMENT  
 FOR MELAKA AND SUNGAI PETANI IN MALAYSIA  
 JAPAN INTERNATIONAL COOPERATION AGENCY

**Fig. VI-15 (4/5)**  
**General Layout of Proposed Detention**  
**Facilities in Sg. Ayer Salak Basin (Melaka)**



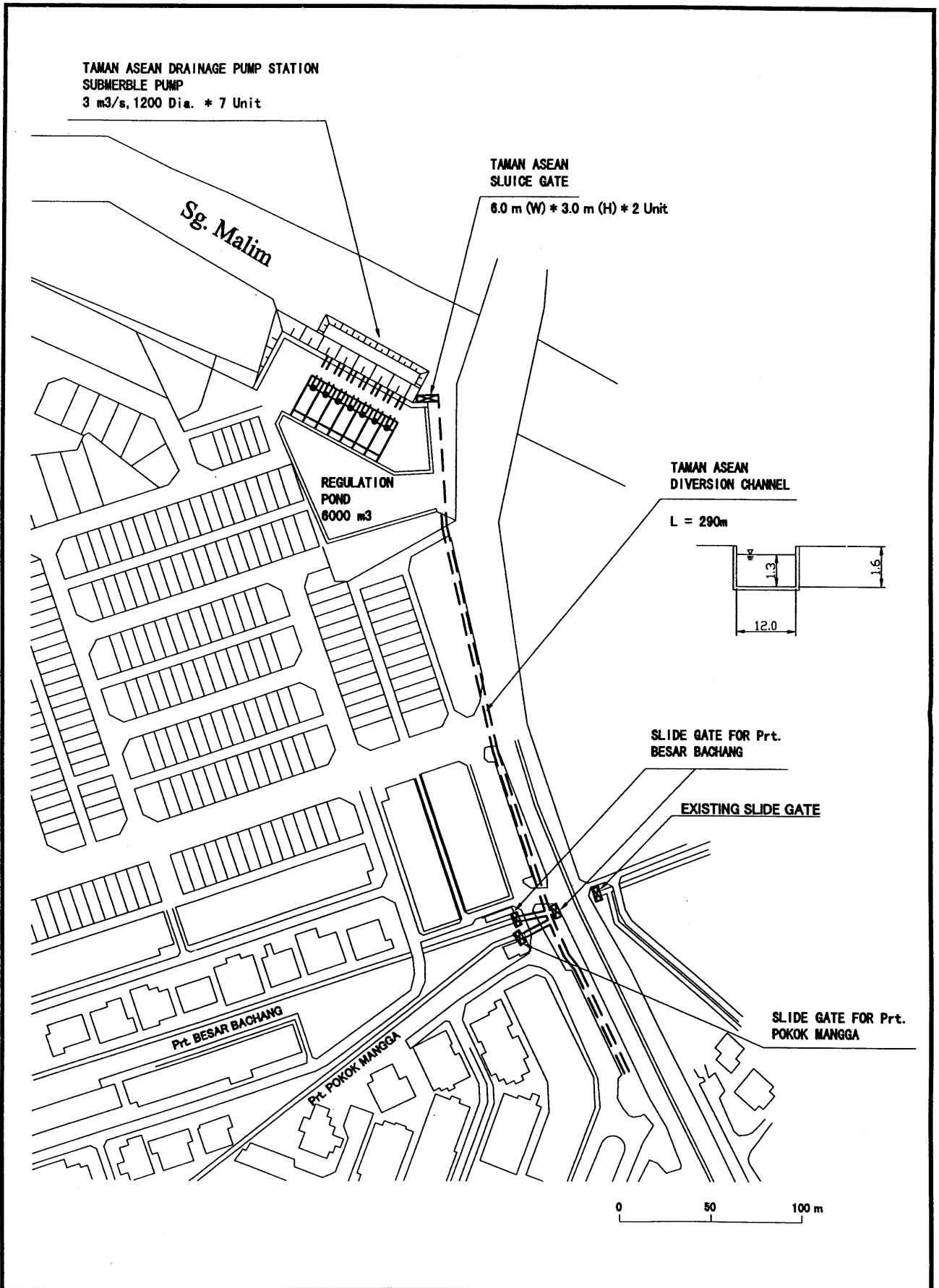
THE STUDY ON  
 INTEGRATED URBAN DRAINAGE IMPROVEMENT  
 FOR MELAKA AND SUNGAI PETANI IN MALAYSIA  
 JAPAN INTERNATIONAL COOPERATION AGENCY

**Fig. VI-15 (5/5)**  
**General Layout of Proposed Detention**  
**Facilities in Sg. Ayer Salak Basin (Melaka)**



THE STUDY ON  
 INTEGRATED URBAN DRAINAGE IMPROVEMENT  
 FOR MELAKA AND SUNGAI PETANI IN MALAYSIA  
 JAPAN INTERNATIONAL COOPERATION AGENCY

**Fig. VI-16**  
**Alternative Plan of Storage Facilities in**  
**Public Open Space in Prt. Pokok Mangga**  
**Basin(Melaka)**



THE STUDY ON  
 INTEGRATED URBAN DRAINAGE IMPROVEMENT  
 FOR MELAKA AND SUNGAI PETANI IN MALAYSIA  
 JAPAN INTERNATIONAL COOPERATION AGENCY

Fig. VI-17  
 Alternative Plan of Pumping Drainage  
 in Prt. Pokok Mangga Basin (Melaka)



Sg. Petani (Air Mendidih)

Work Items	Quantities	1999	2000	2001	2002	2003	2004	2005
1. Feasibility Study		—						
2. Detailed Design & Const. Supervision				—		—	—	—
3. Land Acquisition	8.6 ha				—	—		
4. Construction						—	—	—
(1) Channel Improvement	Length							
Segment : AM-1 to AM-5	1,310 m					—		
Segment : N-1 to N-3	1,090 m						—	
Segment : O-1 to P-4	2,040 m						—	—
(2) Detention Facilities	Earth work							
Polis Hutan D.P.	51,300 m3					—	—	—
Upper Line P D.P.	18,900 m3						—	—
Sek. Men. Sains. S.P.O.S.	20,000 m3					—	—	
IKM S.P.O.S.	3,300 m3					—		
Line N channel storage	4,800 m3					—		

Note : D.P. (Detention Pond)  
S.P.O.S. (Storage in Public Open Space)

Sg. Petani (Line G)

Work Items	Quantities	1999	2000	2001	2002	2003	2004	2005
1. Feasibility Study		—						
2. Detailed Design & Const. Supervision				—		—	—	—
3. Land Acquisition	9.0 ha				—	—		
4. Construction						—	—	—
(1) Channel Improvement	Length							
Segment : G-1 to G-5	1,500 m					—		
Segment : G-6 to G-8 & TK-1	1,240 m							—
Diversion channel : D-1	280 m						—	
(2) Detention Facilities	Earth work							
Taman Keladi D.P.(rehabilitation)	28,000 m3					—	—	
T. Sri Wang D.P.(rehabilitation)	4,700 m3					—		
Upper Line G D.P.	24,100 m3						—	—
Middle Line G D.P.	35,700 m3					—	—	

Note : D.P. (Detention Pond)  
S.P.O.S. (Storage in Public Open Space)

THE STUDY ON  
INTEGRATED URBAN DRAINAGE IMPROVEMENT  
FOR MELAKA AND SUNGAI PETANI IN MALAYSIA  
JAPAN INTERNATIONAL COOPERATION AGENCY

**Fig. VI-18**  
**Implementation Schedule for Priority**  
**Projects in Sungai Petani**

Melaka (Pokok Mangga)

Work Items	Quantities	1999	2000	2001	2002	2003	2004	2005
1. Feasibility Study			■					
2. Detailed Design & Const. Supervision				■	■	■	■	■
3. Land Acquisition	6.3 ha				■	■	■	
4. Construction						■	■	■
Channel Improvement	Length							
Segment : PM-1 to AM-4	3,270 m					■	■	■
Segment : LP-1 to LP-2 & BL-1	2,790 m					■	■	■
Segment : M-1 to M-2	2,230 m						■	■
New trunk drain : FW-1 to FW-3	2,550 m						■	■

Melaka (Ayer Salak)

Work Items	Quantities	1999	2000	2001	2002	2003	2004	2005
1. Feasibility Study			■					
2. Detailed Design & Const. Supervision				■	■	■	■	■
3. Land Acquisition	51.9 ha				■	■	■	
4. Construction						■	■	■
(1) Channel Improvement	Length							
Segment : AS-3 to AS-4	850 m					■	■	■
Segment : AS-5 to AS-8	3,930 m					■	■	■
Segment : A1-1 to A1-3	3,910 m					■	■	■
Segment : A2-1 to A2-2	2,950 m						■	■
Segment : T1-1 to T5-1	4,100 m					■	■	■
(2) Detention Facilities	Earth work							
Bukit Rambai D.P.(rehabilitation)	12,900 m3					■	■	■
Tg.Minyak (1) D.P.	63,100 m3					■	■	■
Tg.Minyak (2) D.P.	51,500 m3					■	■	■
Upper Ayer Salak D.P.	4,300 m3							■
Middle AB1 D.P.	2,200 m3							■
Middle AB11D.P.	100 m3						■	■

Note : D.P. (Detention Pond)

S.P.O.S. (Storage in Public Open Space)

THE STUDY ON  
INTEGRATED URBAN DRAINAGE IMPROVEMENT  
FOR MELAKA AND SUNGAI PETANI IN MALAYSIA  
JAPAN INTERNATIONAL COOPERATION AGENCY

Fig. VI-19  
Implementation Schedule for Priority  
Projects in Melaka